



HAL
open science

Taxonomic and functional analyses of intact microbial communities thriving in extreme, astrobiology-relevant, anoxic sites

Alexandra Kristin Bashir, Lisa Wink, Stefanie Duller, Petra Schwendner, Charles Cockell, Petra Rettberg, Alexander Mahnert, Kristina Beblo-Vranesevic, Maria Bohmeier, Elke Rabbow, et al.

► **To cite this version:**

Alexandra Kristin Bashir, Lisa Wink, Stefanie Duller, Petra Schwendner, Charles Cockell, et al.. Taxonomic and functional analyses of intact microbial communities thriving in extreme, astrobiology-relevant, anoxic sites. *Microbiome*, 2021, 9 (1), pp.50. 10.1186/s40168-020-00989-5 . hal-04548351

HAL Id: hal-04548351

<https://hal.science/hal-04548351>

Submitted on 16 Apr 2024

HAL is a multi-disciplinary open access archive for the deposit and dissemination of scientific research documents, whether they are published or not. The documents may come from teaching and research institutions in France or abroad, or from public or private research centers.

L'archive ouverte pluridisciplinaire **HAL**, est destinée au dépôt et à la diffusion de documents scientifiques de niveau recherche, publiés ou non, émanant des établissements d'enseignement et de recherche français ou étrangers, des laboratoires publics ou privés.




Distributed under a Creative Commons Attribution 4.0 International License

RESEARCH

Open Access



Taxonomic and functional analyses of intact microbial communities thriving in extreme, astrobiology-relevant, anoxic sites

Alexandra Kristin Bashir^{1,2}, Lisa Wink¹, Stefanie Duller¹, Petra Schwendner³, Charles Cockell³, Petra Rettberg⁴, Alexander Mahner¹, Kristina Beblo-Vranesevic⁴, Maria Bohmeier⁴, Elke Rabbow⁴, Frederic Gaboyer⁵, Frances Westall⁵, Nicolas Walter⁶, Patricia Cabezas⁶, Laura Garcia-Descalzo⁷, Felipe Gomez⁷, Mustapha Malki⁸, Ricardo Amils⁸, Pascale Ehrenfreund⁹, Euan Monaghan⁹, Pauline Vannier¹⁰, Viggo Marteinson^{10,11}, Armin Erlacher¹², George Tanski¹³, Jens Strauss¹³, Mina Bashir¹⁴, Andreas Riedo¹⁵ and Christine Moissl-Eichinger^{1,16*} 

Abstract

Background: Extreme terrestrial, analogue environments are widely used models to study the limits of life and to infer habitability of extraterrestrial settings. In contrast to Earth's ecosystems, potential extraterrestrial biotopes are usually characterized by a lack of oxygen.

Methods: In the MASE project (Mars Analogues for Space Exploration), we selected representative anoxic analogue environments (permafrost, salt-mine, acidic lake and river, sulfur springs) for the comprehensive analysis of their microbial communities. We assessed the microbiome profile of intact cells by propidium monoazide-based amplicon and shotgun metagenome sequencing, supplemented with an extensive cultivation effort.

Results: The information retrieved from microbiome analyses on the intact microbial community thriving in the MASE sites, together with the isolation of 31 model microorganisms and successful binning of 15 high-quality genomes allowed us to observe principle pathways, which pinpoint specific microbial functions in the MASE sites compared to moderate environments. The microorganisms were characterized by an impressive machinery to withstand physical and chemical pressures. All levels of our analyses revealed the strong and omnipresent dependency of the microbial communities on complex organic matter. Moreover, we identified an extremotolerant cosmopolitan group of 34 poly-extremophiles thriving in all sites.

Conclusions: Our results reveal the presence of a core microbiome and microbial taxonomic similarities between saline and acidic anoxic environments. Our work further emphasizes the importance of the environmental, terrestrial parameters for the functionality of a microbial community, but also reveals a high proportion of living microorganisms in extreme environments with a high adaptation potential within habitability borders.

Keywords: Extreme environments, Microbiomes, Archaea, Bacteria, Propidium monoazide, Astrobiology, Space-analogue, Extremophiles, Extraterrestrial life, Metagenomics

* Correspondence: christine.moissl-eichinger@medunigraz.at

¹Diagnostic and Research Institute of Hygiene, Microbiology and Environmental Medicine, Medical University of Graz, Graz, Austria

¹⁶BioTechMed, Graz, Austria

Full list of author information is available at the end of the article



© The Author(s). 2021 **Open Access** This article is licensed under a Creative Commons Attribution 4.0 International License, which permits use, sharing, adaptation, distribution and reproduction in any medium or format, as long as you give appropriate credit to the original author(s) and the source, provide a link to the Creative Commons licence, and indicate if changes were made. The images or other third party material in this article are included in the article's Creative Commons licence, unless indicated otherwise in a credit line to the material. If material is not included in the article's Creative Commons licence and your intended use is not permitted by statutory regulation or exceeds the permitted use, you will need to obtain permission directly from the copyright holder. To view a copy of this licence, visit <http://creativecommons.org/licenses/by/4.0/>. The Creative Commons Public Domain Dedication waiver (<http://creativecommons.org/publicdomain/zero/1.0/>) applies to the data made available in this article, unless otherwise stated in a credit line to the data.

Background

In order to understand the potential habitability of extraterrestrial environments, researchers analyse the physiological limits of (microbial) life, thriving in terrestrial, so-called analogue sites [1, 2]. These sites resemble extraterrestrial environments in one or several characteristics, and their biochemistry and biology can help to answer the question of whether life beyond Earth could exist, and if so, where and how it could be detected [3, 4]. Observations made from analogue sites directly feed into the design and preparation of life detection missions destined for Mars and elsewhere.

A large number of analogue environments has been investigated, from deserts like Atacama to deep subsurface environments [3, 5, 6] (additional references, see [1]). However, unavoidably in the majority of terrestrial settings, most of these environments are oxygenated and are thus inappropriate for studying conditions for extraterrestrial life, as most known extraterrestrial environments are oxygen-free or contain very low abundances of oxygen. For example, the thin Martian atmosphere contains 0.14% (v/v) oxygen and its surface and subsurface is therefore expected to be only habitable for microorganisms capable of tolerating or growing under an oxygen-free atmosphere [1].

Consequently, motivated by a desire to understand the characteristics of anaerobic life at its physical and chemical limits, the MASE project (Mars Analogues for Space Exploration; <http://mase.esf.org/>) was initiated, with the goal to use analogue sites as models for profound

microbiome, chemical and instrumentation-based analyses [1] (additional details in Table 1 and Additional file 2: Supplementary Table 1).

As none of all possible terrestrial analogue sites combines all extraterrestrial physical and chemical conditions at once [3], we chose to analyse a representative set of anoxic terrestrial environments with discrete physical and chemical parameters. We concentrated specifically on (i) low water activity (resembling, e.g. putative Martian recurring slope lineae brines [8–10]), (ii) low temperature (resembling, e.g. permafrost/ice deposit regions on current Mars/Planum Boreum), (iii) oxygen limitation/anoxic conditions (all sites), (iv) restricted availability of (complex and/or organic) nutrients (all sites) and (v) acidic conditions (resembling, e.g. Early Mars streamlets/water-rock interactions) (Table 1). With a combination of different methods, including large-scale cultivation and propidium monoazide [11] (PMA) amplicon/shotgun metagenome sequencing from 13 selected sites at five sampling locations (sulfidic springs, hypersaline environments, two acidic aquatic environments, permafrost settings), we characterized the bacterial and archaeal communities with respect to taxonomic composition and functional capabilities. Based on our results, we inferred general principles of anaerobic microbial communities in extreme, anoxic analogue terrestrial sites.

Methods

Sampling sites

Sediment, water and soil samples were obtained during sampling campaigns performed in 2014 and 2015.

Table 1 Overview on all sites and samples (additional information given in Additional file 2: Supplementary Table 1 and [1])

Sampling sites: types and locations	Sample names	Relevant chemical and physical extreme characteristics (example analogue Martian site)
Sulfidic springs (Germany)	Sippenauer Moor	Sulfidic spring SM; sulfidic spring SM[*] Anoxic, low in organics, sulfur-rich, low temperature (10°C, Noachian sulfur cycling at Meridian Planum and across Noachian Mars)
	Islinger Mühlbach	
Hypersaline environment (Boulby mine, UK)	Sampling site 1	Hypersaline environment Anoxic, low in organics, hypersaline (Terra Sirenum; anoxic brine slopes)
Acidic lake (Lake Grænavatn, Iceland)	Sampling site 1	Acidic lake SS1; acidic lake SS1[*] Anoxic, low in organics, basaltic environment (acidic lake), acidic (pH 2–3), (water-rock interactions at Jezero Crater; Meridiani Planum)
	Sampling site 3	
Acidic river (Rio Tinto, Spain)	Lago Peligroso	Acidic river LP; acidic river LP[*] Acidic river Gal; acidic river Gal [*]
	Galdierias	
Permafrost setting (Herschel Island, Canada and Yedoma, Russia (SOB-14))	SlpD14-PS1-11	Permafrost SlpD14-1; permafrost SlpD14-1[*] Low temperature (< 0°C, anoxic; Planum Boreum)
	SlpD14-PS3-11	
	SOB-14-06-A-37	Permafrost SOB; permafrost SOB[*]
	TSD-14-IW1-01	Permafrost TSD; permafrost TSD[*]
Additional samples (retrieved during Mars landing simulation campaign)		
Kaunertaler Glacier (Austria)	Sampling site 1	Glacier SS1; glacier SS1 [*] Low temperature (< 0 °C, Planum Boreum)
	Sampling site 2	

(^{*}) in the sample abbreviations indicates pre-treatment of the samples with propidium monoazide (PMA). The sample “hypersaline environment” was not subjected to PMA treatment, as PMA treatment is inefficient in high-salt samples [7]. Samples used for shotgun metagenomics analyses are printed in bold

Sampling sites were selected based on their relevant chemical and physical characteristics (explained in detail in [1], Table 1, and Additional file 2: Table 1). In brief, the sampling sites included two sulfidic springs [12–17], (i) one subsurface, hypersaline environment [6, 18–20], (ii) one acidic lake [1, 21], (iii) one acidic river [22, 23] and (iv) two permafrost environments, later on referred to as the MASE environments. For comparison, one glacier environment was added, from which samples were retrieved during a Mars landing simulation of the Austrian Space Forum (ÖWF) in 2015 (AMADEE-15 [24], Additional file 1: Figure S1). Samples were taken with sterilized, DNA-free tools, transported under cooled conditions (<10 °C), and processed as soon as possible. Samples from permafrost were kept frozen until processing. Samples for cultivation were taken as described in [1]; cultivation approaches, isolation of microorganisms and genome sequencing of representative isolates is described in the Additional file 1.

PMA treatment and DNA extraction for shotgun metagenomics analyses and 16S rRNA gene amplicon sequencing

In order to discriminate between viable (i.e. cells with an intact cell membrane) and dead cells (cells with a disrupted cell membrane) in subsequent molecular analyses, 0.25 g of each sample was mixed with 1 ml of DNA-free H₂O LiChrosolv® (Merck, USA) and treated with propidium monoazide (PMA; VWR, Austria) following the protocol of [25] as soon as possible after sampling. After adding a final concentration of 50 µM of PMA, the samples were briefly vortexed and gently shaken on ice for 10 min under dark conditions. After a light exposure time of 3 min (PMA-LITE Photolysis device; Biotium, USA), the samples were stored at –80 °C until DNA extraction. The sample “hypersaline environment” was not subjected to PMA treatment, as PMA treatment is inefficient in high-salt samples [7].

In the following, all PMA-treated samples are marked with an asterisk (*), e.g. the sample “sulfidic spring IM*” refers to the PMA treated sample, whereas sample “sulfidic spring IM” refers to the PMA untreated, simultaneously processed sample. DNA extraction followed the standard operation procedures (SOPs) provided by the Earth microbiome project [26], by using the PowerSoil® DNA Isolation Kit (MOBIO Laboratories, Carlsbad; “Max” version for metagenomics analyses). Procedure controls (extraction blanks, etc.) were processed for each step of the analyses along with the samples.

Generation of 16S rRNA gene amplicons, library preparation and Illumina MiSeq paired-end sequencing

The DNA concentration was normalized to 10 ng and used as a template in two distinct PCR reactions with

primers carrying an Illumina MiSeq-compatible barcode adapter. The first reaction targeted bacterial and archaeal 16S rRNA genes (“universal” primer set [27]; forward primer F515, reverse primer R806). The second approach targeted Archaea exclusively and included a nested approach: In the first of the two subsequent PCR reactions, the template was amplified using the primer combination Arch344F (5′-ACGGGGYGCAGCAGGC GCGA-3′) and Arch915R (5′-GTGCTCCCCGCCAAT TCCT-3′ [28, 29]. In the second PCR, the amplicons for Illumina sequencing were generated by the tagged primers S-D-Arch-0349-a-S-17 and S-D-Arch-0519-a-A-16 [30] using the purified products (10 ng) of the first PCR as a template [31].

The cycling conditions for the universal approach were 94 °C: 3 min, 35 cycles of 94 °C: 45 s/60 °C: 60 s/72 °C: 90 s, and 72 °C: 10 min. For the first PCR of the nested PCR approach for Archaea, the cycling conditions were 95 °C: 2 min, 10 cycles of 96 °C: 30 s/60 °C: 30 s/72 °C: 60 s, 15 cycles of 94 °C: 30 s/60 °C: 30 s/72 °C: 60 s, and 72 °C: 10 min. For the second amplification, the cycling conditions were 95 °C: 5 min, followed by 25 cycles 95 °C: 40 s/63 °C: 120 s/72 °C: 60 s, and 72 °C: 10 min. Library preparation and sequencing was carried out at the Core Facility Molecular Biology at the Center for Medical Research, Medical University of Graz, Austria. Briefly, PCR products were normalized using a Sequel-Prep™ normalization plate (Invitrogen, USA). Each sample was indexed with a unique barcode sequence by an 8 cycles index PCR. Sequencing was carried out using the Illumina MiSeq device and MS-102-3003 MiSeq Reagent Kit v3-600 cycles (2 × 251 cycles).

Community profiling based on amplicon sequencing

Reads from amplicons were processed using R (version 3.2.2) and the package DADA2 [32] as already described elsewhere [33], following the SOPs as recommended by the developers. Merged sequences were trimmed to a consistent length of ~270 bp (“universal” primer set) and ~140 bp (“Archaea” primer set). Thereafter, the sequences were assigned to a taxonomy using the RDP training set classifier v.14 and the SILVA v.123 classifier. Ribosomal sequence variants (RSVs) which were overlapping in negative controls and samples were removed from the datasets. All RSV tables are available in the Additional file 2 (Supplementary Tables 2-5). An additional data quality check was performed by visualization of rarefaction curves (richness vs. reads sampled), which confirmed sufficient sampling depth by reaching plateaus in each sample. Sequence data visualization of the amplicon data was carried out using the R package phyloseq [34]. The networks were created using the “make_network” function implemented in the phyloseq package

with default parameters and additional settings given in the text.

Shotgun library preparation and NGS for metagenomic analysis

Shotgun metagenomic analyses were performed on six selected samples (indicated in Table 1, in bold). One microgram of DNA was used for whole genome shotgun sequencing. Double-stranded DNA was quantified with the Qubit 2.0 (Invitrogen, USA). Shotgun libraries for Illumina MiSeq sequencing were prepared with the NEBNext® Ultra II DNA Library Prep Kit for Illumina® in combination with the Index Primers Set 1 (NEB, Germany) according to manufacturer's instructions and as described in [35]. Briefly, 100–200 ng of dsDNA were fragmented by ultrasonication in a Bioruptor® instrument (Diagenode S.A., Belgium) with 4 cycles of 30 s on and 30 s off. The sheared DNA was used in end repair and adapter ligation reactions in the NEBNext® Ultra II DNA Library Prep Kit for Illumina® according to manufacturer's instructions with size selection to an approximate inset size of 500–700 bp. Subsequent PCR amplification was performed in 4–6 cycles and libraries were eluted after successful amplification and purification in 33 µl 1× TE buffer pH 8.0. For quality control, libraries were analysed with a DNA High Sensitivity Kit on a 2100 Bioanalyzer system (Agilent Technologies, USA) and again quantified on a Quantus™ Fluorometer (Promega, Germany). An equimolar pool was sequenced on an Illumina MiSeq desktop sequencer (Illumina, USA). Libraries were diluted to 8–10 pM and run with 1% PhiX and v3 600 cycles chemistry according to manufacturer's instructions on two MiSeq runs.

Gene-centric data analysis of metagenomic reads

We used FastQC v. 0.11.5 [36] to determine the base quality throughout the 250 bp MiSeq-generated paired-end reads. Identified adapter and overrepresented homooligonucleotides were removed using cutadapt v 1.14 [37] and retained reads were further trimmed using Prinseq-lite v. 0.20.4 [38] and following parameters: “-min_len 100 -trim_qual_right 20 -trim_qual_left 20 -trim_left 8”. BMAP short read aligner v. 37.61 was used to remove bacteriophage PhiX174 contaminants from trimmed high-quality reads by mapping them against the respective genome. Matching reads were not included in further analysis. Quality-filtered reads were then compared against the NCBI non-redundant database using DIAMOND BLASTx v 0.9.10 [39] and default parameters.

Gene-centric analysis was performed through MG-RAST [40] and MEGAN [41]. Resulting taxa and functional gene tables were visualized and analysed using

Calypso [42]. Datasets for comparative metagenomics were available through the public datasets of MG-RAST.

Genome-centric analysis of metagenomic reads

Raw fastq files were quality filtered with trimmomatic 0.36 [43] based on fastqc 0.11.5 [36] file reports including removal of TrueSeq3 paired end adaptor sequences, truncating reads to a minimum length of 50 bp and a phred score of 20 in a sliding window of 5 bp. Quality-filtered reads were then assembled with Megahit [44] using the --presets meta-sensitive. Resulting final contigs and scaffolds were binned with MaxBin 2.2.4 [45]. Individual bins were evaluated including estimates for completeness and contamination with checkM. Taxonomic lineages of each bin were annotated with amphora2. Fifteen (of 122 bins) representative draft genomes with a mean level of completeness of 90% (cutoff min. 77%) and with a mean level of contamination of 10% (cutoff max. 20%) were further annotated and analyzed in MaGe [46] and replication rates were estimated with iRep [47] after mapping contigs on quality-filtered reads with Bowtie2 [48] and SAMtools [49]. All genome-centric analysis were supported and curated by a gene-centric approach including mappings of quality-filtered reads using blastX searches against NCBI nr with diamond [39] and further analysis in MEGAN [50].

Data availability

Sequence datasets obtained for microbial community data analysis were submitted to EBI and are publicly available (study project number: PRJEB18706). Shotgun datasets and binned genomes, as well as the genomes of the isolates *Buttiauxella* MASE-IM-9, *Yersinia* MASE-LG1, *Halanerobium* MASE-Boulby, are available through Bioproject number PRJEB28336.

Results

Samples and sampling sites

Overall, we retrieved samples from 13 selected sites at five sampling locations. All sampling locations were extreme sites, which were selected based on their astrobiology-relevant chemical and physical characteristics [1] (Table 1, Additional file 2: Supplementary Table 1).

All samples were subjected to microscopic examination, including fluorescence *in situ* hybridization (Additional file 1: Supplementary Fig. S2), cultivation (see Additional file 1) and DNA-based analyses.

The intact archaeal communities differ between the sites and reflect niche association

Twenty-five samples from six different sites were subjected to PMA treatment and subsequent microbiome analysis (designated with “*”, Table 1). PMA

was used to mask background DNA from dead cell material [11].

In a first step, we focused on the archaeal community. In total, 787,842 archaeal reads were obtained using the Archaea-targeting primer set, resulting in 1,502 archaeal RSVs. On average, 37,516 reads were obtained from each sample, the number of retrieved reads varied strongly across the samples. The lowest number of sequences was retrieved from sample “acidic lake SS3” (72 reads), whereas the highest read count was obtained for “sulfidic spring IM*” (PMA-treated sample of sulfidic spring Islinger Muehlbach; 106,622 reads). It should be noted that no archaeal RSVs were observed from the samples obtained from the glacier (PMA treated and untreated), which indicates either a low amount of archaeal 16S rRNA genes (below detection limit) or an insufficient primer match [51, 52]. A bar chart displaying the archaeal community composition (phylum level) of all samples (PMA treated and untreated) is given in Additional file 1: Supplementary Figure S3.

In the PMA dataset, which included the PMA-untreated hypersaline environment sample [7], the majority of RSV counts were assigned to the phyla Euryarchaeota (39.3%), Thaumarchaeota (22.7%), unassigned Archaea (20.8%) and Woesearchaeota (DHVEG-6; 10.9 %; Fig. 1a). Signatures of Euryarchaeota were detected throughout all Archaea-positive samples, except for the acidic lake SS1* sample. The highest proportion of haloarchaeal signatures was observed in the sample of the hypersaline environment (Halobacteriales; 99% of all Euryarchaeota signatures within this sample). Other sequences from the same sample were classified as Nanohaloarchaeota (12.6% of all archaeal sequences), Thaumarchaeota and Woesearchaeota (both below 1%).

Notably, 99.9% of the sequences detected in the acidic lake SS1* remained unclassified within the archaeal domain and, thus, might represent a new taxon, whereas all sequences of the second sampling site of the acidic lake SS3* could be assigned on phylum level and were classified as potentially methane-producing Bathyarchaeota [53, 54] (19.4% of all sequence counts within this sample), potentially ammonia-oxidizing Thaumarchaeota [55] (72.9%), Euryarchaeota (7.6%) and a minor proportion of Woesearchaeota (DHVEG-6; < 1%).

Sequences from Rio Tinto were mainly assigned to unclassified Archaea (71.4%), Thaumarchaeota (10.1%) and Euryarchaeota (16.5%; in the acidic river Gal* sample) and a high proportion of Euryarchaeota (98.8% in the acidic river LP* sample).

In the spring biotopes, a remarkably high proportion of signatures assigned to Woesearchaeota (DHVEG-6) was detected (36.5% and 21.2% of all sequence counts in SM* and IM* samples, respectively), in addition to Altiarchaeales [14, 15] and other signatures. Notably,

only the sulfidic spring biotope revealed signatures of Archaea belonging to the group of Aenigmarchaeota (< 1%).

Permafrost samples contained mainly signatures of Euryarchaeota with high proportions of methanogenic archaea (*Methanobacteria* and *Methanomicrobia*) and Thaumarchaeota (Soil Crenarchaeotic Group; SCG and Marine Benthic Group; MBG). Notably, the “universal primer” approach (see next section) revealed a slightly different composition of the archaeome (see Additional file 1: Supplementary Information Figure S4).

The microbiomes of MASE sites harbour a vast diversity of adapted, anaerobic microorganisms

In a next step, we amplified both 16S rRNA gene pools of PMA treated and PMA-untreated samples with a “universal” primer set to target the entire microbial community. In total, we obtained 1,523,276 sequences (minimum: 10,819, “permafrost SlpD14-3*”; maximum: 119,379, “acidic river Gal*”; mean: 60,851). After processing the reads, a total of 15,945 different RSVs were obtained. In the following, we concentrate on the intact microbial proportion (PMA-treated samples, and the PMA-untreated “hypersaline environment”); the taxonomic profile of all PMA-untreated samples is given in Additional file 1: Supplementary Information Figure S5.

Intact microbial communities in MASE environments were generally characterized by Proteobacteria (27 %, mean percentages of total amount of RSV counts), followed by Actinobacteria (11 %), Bacteroidetes (9 %), Chloroflexi (8 %), Acidobacteria (6 %), Firmicutes (5 %), Euryarchaeota (6 %) and a minor proportion (2 %) of unassigned Archaea (Fig. 1b, c). Signatures of Proteobacteria were present throughout all sampling sites, but in different proportions. Similarly, signatures of Actinobacteria were detected in each environment with the exception of the “hypersaline environment”. This biotope also revealed a minor proportion of Firmicutes signatures, which were completely absent in samples from the acidic lake* environment, but were present in all other samples.

In the datasets, we identified the signatures of a broad diversity of facultatively or obligately anaerobic and extremotolerant/extremophilic microorganisms with relevance for analogue research and astrobiology [56–58]. Those included methanogens (e.g. *Methanobacterium*), halophiles (e.g. archaeal Halobacteria, Halothiobacillaceae), acidophiles (e.g. Acidithiobacillaceae) and a number of taxa associated with psychrotolerance (e.g. *Pseudomonas*, *Oscillatoria*, *Phormidium* and *Arthrobacter*; Additional file 2: Supplementary Table 2). In addition, we identified signatures of taxa with relevant anaerobic metabolic capabilities [59–61], including iron reduction (e.g. *Geobacter*, and *Shewanella*), sulfate

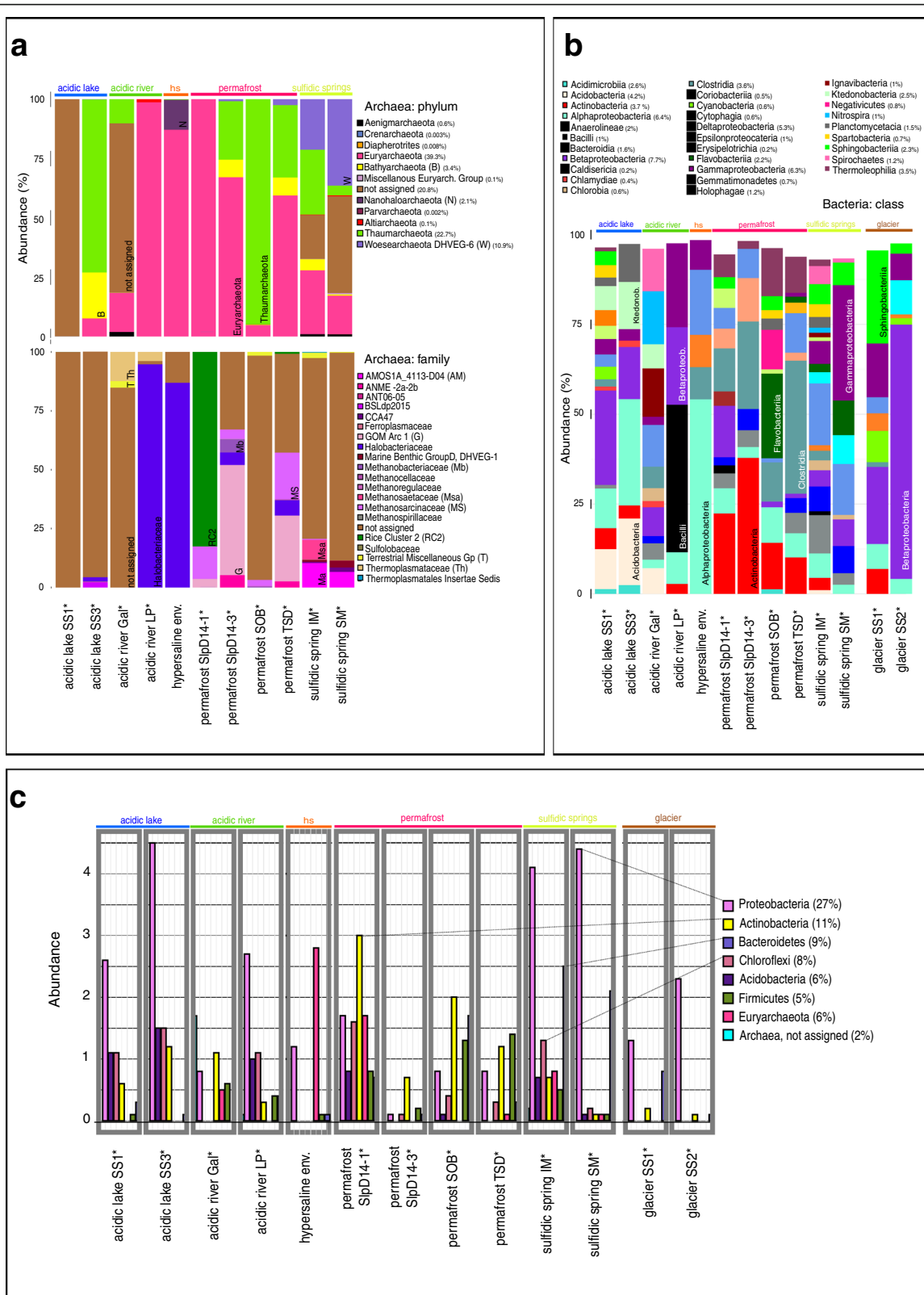


Fig. 1 (See legend on next page.)

(See figure on previous page.)

Fig. 1 Archaeal and bacterial profiles of intact microbial communities from MASE environments. Panel **a** shows the taxonomic profile obtained using the Archaea-targeting primer, on phylum (upper bar chart) and family level (below). Phyla names are followed by relative abundances (all datasets); no archaeal signatures were obtained from the glacier samples. Panel **b** shows the bacterial composition of all samples on class level (only those classes with > 0.1% are shown). Panel **c** displays the most abundant phyla of the microbial community (based on “universal” primer set, “microbiome”). For all panels, the relative abundance of each taxon is shown on the y-axis. The total relative abundance, summed up for all samples, is given in brackets behind the taxa names in the legends. For unclassified RSVs (“unassigned”) the highest assigned taxonomic level is given. For instance, “Archaea, not assigned” reflects all RSVs which were classified on Archaea level, but could not be assigned to other taxonomic levels. Full detail on the archaeal and universal dataset is given in Additional file 2: Supplementary Tables 2 and 3.

reduction (e.g. *Desulfobacterium*, *Desulfovibrio*), nitrate-dependent iron oxidation (e.g. *Aquabacterium*, *Thermomonas*) and methanogenesis (e.g. *Methanobacterium*, *Methanosaeta*, *Methanoperedens*).

As of potential interest for planetary protection measures for space missions [62], it should be mentioned that signatures from potentially radiation and/or desiccation-resistant microbes such as members of the Deinococcus-Thermus phylum (*Deinococcus*, *Truepera* and additional unclassified members) were also detected in the glacier*, sulfidic spring*, permafrost* and acidic river* samples. Additionally, signatures of spore-formers, such as bacilli and Clostridia, generally capable of resisting harsh environments, were found in all environments.

The MASE sites reveal microbiome-based similarities which are shaped by the extreme environmental parameters

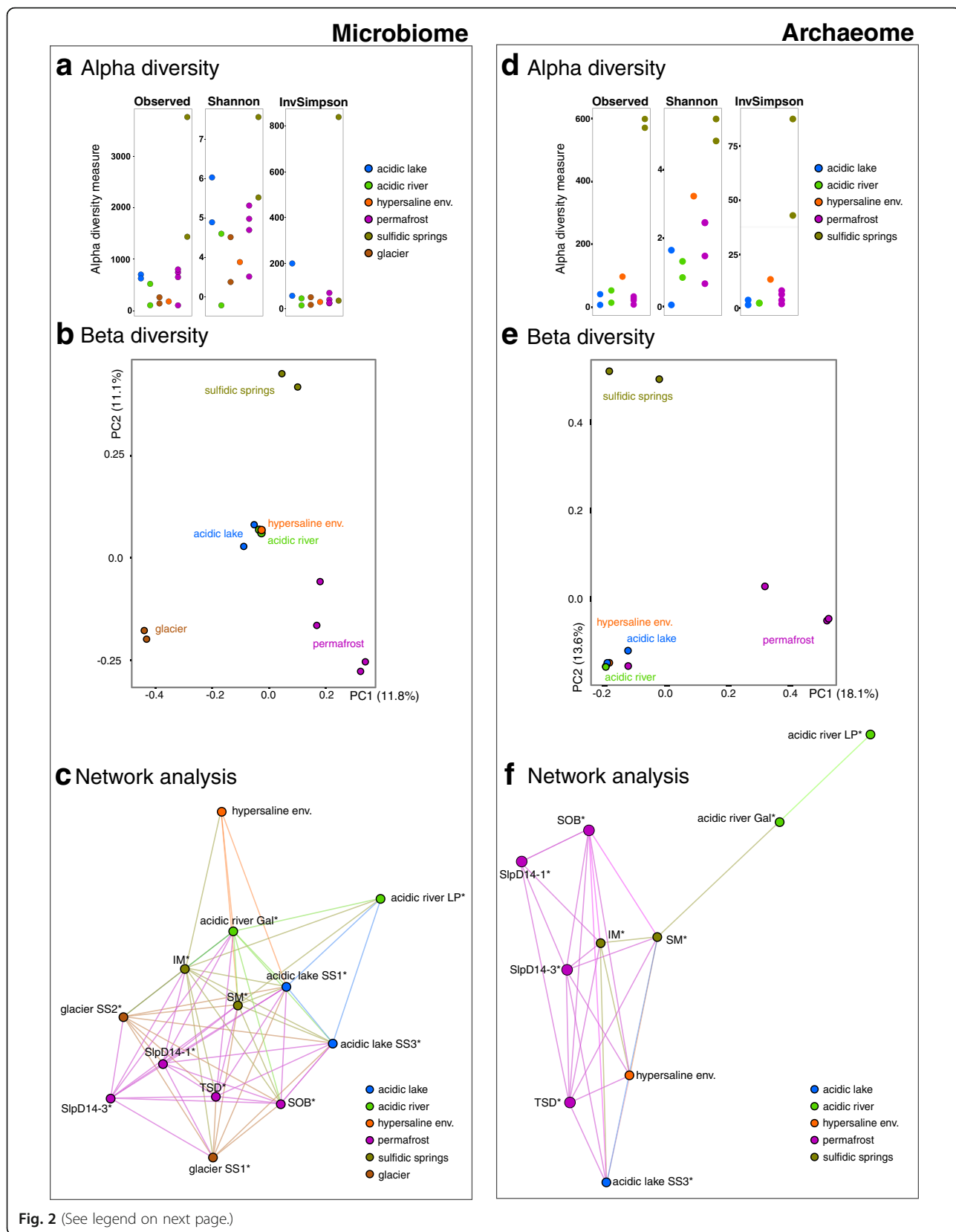
The highest archaeal richness and diversity (Archaea-targeted approach, “archaeome”) was observed in the sulfidic spring biotopes (PMA-treated samples: observed species: 598 (mean), Shannon index: 5.13 (mean); PMA-untreated samples: observed species: 461 (mean), Shannon index: 4.79 (mean); Additional file 2: Supplementary Table 6), whereas samples from the acidic lake (pH 3) contained an overall very low archaeal richness and diversity (PMA-treated samples: observed species: 20 (mean), Shannon index: 0.81 (mean); PMA-untreated samples: observed species: 9 (mean), Shannon index: 1.80 (mean)). With respect to archaeal richness and diversity, PMA-treated and -untreated samples (all sites) did not differ significantly (Additional file 2: Supplementary Table 6).

The samples from sulfidic springs also showed the highest diversity when observing all microbial signatures (universal dataset, “microbiome”; PMA-treated samples: observed species: 2589 (mean), Shannon index: 6.51 (mean); PMA-untreated samples: observed species: 2438 (mean), Shannon index: 6.28 (mean); Additional file 2: Supplementary Table 7), whereas the lowest diversity was observed in samples from the hypersaline environment (observed species: 155, Shannon index: 3.8). Alpha diversity information of all PMA-treated samples is displayed in Fig. 2.

The lowest proportion of RSVs from intact cells was detected in samples from permafrost (15.3%, sample SLpD14-3; 64%, sample TSD), acidic lake (30%, sample SS1) and the acidic river (70%, sample LP; 80%, sample Gal; Additional file 2: Supplementary Table 7, column “observed”).

The beta diversities of the archaeome and the general microbiome were visualized via PCoA plots (based on Bray-Curtis distances; Fig. 2b, e). The microbial communities derived from the acidic environments, such as the acidic river and acidic lake (although obtained from geographically remote sampling sites in Iceland and Spain), clustered in both PCoA plots (Fig. 2b, e), along with the sample from the “hypersaline environment” (UK). The permafrost samples (with one exception in the archaeome analysis), the sulfidic spring samples and the glacier samples grouped separately into their own clusters.

To analyze the microbial order of connectivity amongst sampling sites, networks based on archaeome and microbiome were constructed (thresholds: max. distance 1.0, line weight 0.4; Fig. 2c, f). Regarding the archaeome, the samples derived from acidic environments (acidic lake and acidic river) were not highly connected to other sampling sites (only one connecting edge; Fig. 2f). The permafrost samples showed a high level of connection to the sulfidic springs and one acidic lake sample. The microbiome network revealed similar connections with a relatively central position of the sulfidic springs, which also carried the highest microbiome diversity (Fig. 2f, a). Notably, the microbiome from the hypersaline environment, representing an environment with dissimilar physical and chemical parameters, was connected primarily with environmental samples from the acidic sites. It appears that the high ionic strength in these sites is reflected by a more similar microbiome composition. This observation was confirmed by the detection of twenty overlapping taxa, of which eight were resolved on genus level, namely *Paludibacter*, *Aquabacterium*, *Geobacter*, *Sulfurovum*, *Beggiatoa*, *Thiothrix*, *Spirochaeta_2* and *Opitutus*. Notably, Halobacteriaceae were found in both environments, as well as Acidobacteriales. Most of the core genera of the hypersaline environment and acidic sites were, however, affiliated to Proteobacteria (Additional file 1: Supplementary Information Figure 6).



(See figure on previous page.)

Fig. 2 Microbial diversity and network analysis of microbial communities in samples from MASE sites (only PMA treated samples shown). The left panel gives information on the general microbiome (universal dataset), whereas the right panel displays results from the archaeome analyses (Archaea-targeted approach). The alpha diversity (**a, d**), beta diversity (PCoA plots; unweighted Bray-Curtis distance; **b, e**) and the connections between in the sampling sites (networks; **c, f**) are displayed separately. The connection (based on Bray-Curtis similarity) of samples is visualized by the number of straight lines in-between, reflecting a distance of 0.4 or below (see text)

Fitting environmental variables, such as water activity, temperature and pH values, onto the NMDS ordinations revealed that the microbial community variation might be best explained by temperature (Additional file 1: Supplementary Information Figure 7), followed by pH values. Water activity measurements were similar in each site (mean water activity value $a_w = 0.95$), except for the “hypersaline environment”, which had the lowest water activity value ($a_w = 0.75$).

In a next step, we were interested in whether the MASE sites share certain microbial signatures. The intact core microbiome of all sampling sites (PMA-treated samples and hypersaline environment) comprised four taxa. Two of them could be classified on the genus level, namely *Paludibacter* (12 different RSVs present in all sampling sites, 0.3% of all RSV counts) and *Opiritutus* (34 different RSVs present in all sampling sites; 0.1% of all RSV counts). At the species level, *Paludibacter propionigenes*, an obligately anaerobic bacterium producing propionate originally isolated from a rice plant residue [63], was closely related to one RSV from the sulfidic spring SM*, whereas type strain *Opiritutus terrae*, a strictly anaerobic, also propionate (and acetate) producing microorganism isolated from a rice paddy soil microcosm [64] was represented by two RSVs from the acidic river Gal* and permafrost* (Additional file 1: Supplementary Information Figure 8a).

In a second step, we excluded the PMA-untreated hypersaline environmental sample with the result that the intact core microbiome of all remaining MASE sites exhibited 34 common taxa (Additional file 1: Supplementary Information Figure 8b, c). Seven of them were resolved at the genus level (*Bryobacter* (35 different RSVs), *Candidatus Solibacter* (22), *Acidocella* (9), *Bdellovibrio* (34), *Aquicella* (16), *Opiritutus* (34) and *Paludibacter* (14); Additional file 1: Supplementary Information Figure 8b), and 20 common taxa could be resolved on the order level (Additional file 1: Supplementary Information Figure 9). Most RSVs belong to the family Anaerolinaceae (239 different RSVs), followed by members of the order Gaiellales (92) and the family Planctomycetaceae (88). Notably, we could not detect any archaeal core taxa on any taxonomic level. RSVs assigned to *Paludibacter* and members of the family Opiritutaceae were also identified in the shotgun metagenomics dataset (in PMA and PMA untreated sulfidic spring sample, abundance < 0.1%; see below).

PMA treatment affects the abundance of Eukaryota in the metagenomics datasets

Samples from three representative sampling sites (i.e. sulfidic spring SM, acidic lake SS3 and permafrost SOB) were selected for metagenomic sequencing. For each sample, we processed two parallel fractions, one PMA treated, the other untreated. The other samples of the MASE sites could not be included in the metagenomic approach, as obtained DNA concentrations were too low for a proper analysis.

Overall, the taxonomic information derived from the metagenomics dataset (Additional file 2: Supplementary Table 8) was congruent with the findings from amplicon sequencing approach. However, the permafrost sample SOB showed a higher contribution of Acidobacteria and the archaeal TACK superphylum (i.e. Thaumarchaeota), when PMA treatment of the sample was performed.

It shall also be noted that the signatures of Alveolata and Amoebozoa (Eukarya) were found to be reduced after PMA treatment in the acidic lake samples, indicating a possibly high contribution of free DNA therefrom (Additional file 1: Supplementary Fig. 10).

The highest taxonomic diversity was detected in SM samples and least in the permafrost SOB samples ($p = 0.047$, ANOVA, based on Shannon Index). Metagenomic signatures of *Bradyrhizobium*, Mycobacteriaceae and uncultured microorganisms were found in all PMA-treated samples from all locations (“PMA core”), whereas the overall core microbiome was predominated by unclassified microbial signatures, *Streptomyces*, *Mycobacterium*, unclassified PVC-group organisms, unclassified Proteobacteria and *Bradyrhizobium* (Additional file 2: Supplementary Table 8).

The functional profiles of the MASE microbial communities mirror the extreme physical and chemical characteristics of the MASE sites

As mentioned above, metagenomic analyses could only be performed for three representative MASE sites (each with and without PMA). However, for the sake of completeness, we performed comparative analysis of all samples using the in silico tool Tax4fun [65] to infer the estimated microbial functions from amplicon-based information. The methodology and results of this approach are provided in Additional file 1: Supplementary Figure 11 and its legend.

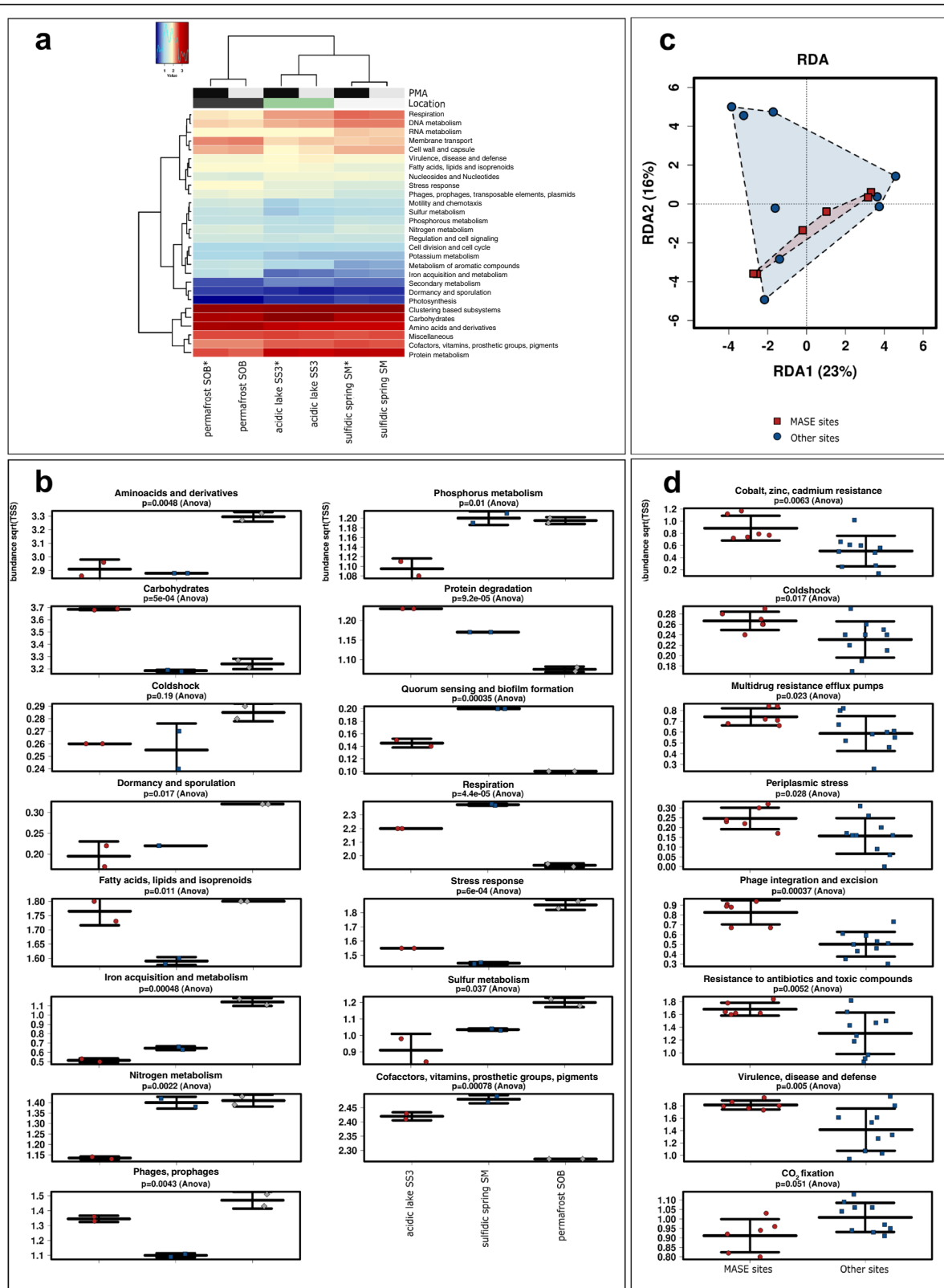


Fig. 3 (See legend on next page.)

(See figure on previous page.)

Fig. 3 Metagenomics-based, functional profiles of selected MASE sites (sulfidic spring SM, acidic lake SS3 and permafrost SOB). Overview on the found functional pathways and functions and their relative abundance (a), and the difference in the functional profiles of the different MASE sites (b). The comparison with other, non-extreme, but comparable sites (soil, groundwater, lake) does not reveal significant impact on the metagenomics profile (c). MASE site differ significantly from other moderate (soil, groundwater, lake) or extreme (brine, Antarctic lake, permafrost) environments in a number of functions (d)

In the metagenomics dataset, the diversity of microbial functions was found to be significantly higher (Shannon index, $p = 0.027$, ANOVA) in the permafrost sample (SOB), compared to SM and SS3, where it was found to be the lowest diversity. While the grouping of microbial functions according to location was found to be significant ($p = 0.01$, redundancy analysis), the grouping according to PMA treatment was not found to be significant.

The most abundant enzymes/functions detected in the shotgun metagenome dataset were (i) an integrase (involved in phage integration and excision), (ii) glycosyltransferase (biosynthesis of galactoglacans and related lipopolysaccharides), (iii) cation efflux system protein CusA (cobalt zinc cadmium resistance), (iv) long-chain fatty acid CoA ligase (fatty acid degradation regulons) and (v) decarboxylase (serine glyoxylate cycle) (additional information is given in Fig. 3 and Additional file 2: Supplementary Table 9).

The metagenome-derived microbial functions of the three environments showed differences in the levels of certain metabolic pathways and functions. In particular, the permafrost sample SOB was characterized by an increased turnover of amino acids, increased cold shock response, dormancy/sporulation, iron acquisition and metabolism, stress response and sulfur metabolism,

reflecting a potential tension induced by diurnal and seasonal freeze thaw cycles due to environmental temperature changes. The sulfur spring SM was particularly characterized by quorum sensing and biofilm formation, respiration, co-factor formation and, together with permafrost sample SOB, nitrogen and phosphorus metabolism. The acidic lake sample SS3 was characterized by the highest level of functions involved in carbohydrate turnover and protein degradation and, together with sample SOB, in fatty acid metabolism (Fig. 3a, b).

In a following step, we wanted to understand the differences between MASE microbial communities in taxonomic and functional composition when compared to metagenomic datasets from moderate environments, namely soil (Hungary, Finland, South Africa), groundwater (Tulsa, USA), lake- (Switzerland, Greece) and seawater (Mediterranean Sea, Indian Ocean). For comparison, we also included other extreme environments, namely brines (Spain), Antarctic lake (Antarctica) and permafrost (Axel Heiberg Island, Canada) (Additional file 2: Supplementary Table 9). Amongst all these environments, the permafrost samples were characterized by the lowest taxonomic diversity (assessed on genus level, Shannon index, $p = 0.0016$, ANOVA), whereas the samples from lakes, groundwater and sulfidic spring showed the highest diversity. When we

Table 2 Overview on the obtained binned genomes, their origin, taxonomy and details on completeness and contamination

Origin	Sample/bin	Taxonomy	Details (completeness %/ contamination %)
Sulfidic spring	1Sipp, bin 2	Gammaproteobacteria, Thiotrichales	97.87/19.98
	1Sipp, bin 3	Gammaproteobacteria, Chromatiales	88.68/4.45
	1Sipp, bin 6	Gammaproteobacteria, Chromatiales	80.70/ 7.21
	1Sipp, bin 9	Epsilonproteobacteria, <i>Sulfurovum</i>	79.86/12.80
	1Sipp, bin 5	Gammaproteobacteria	79.88/10.50
	PMA 2Sipp, bin 2	Bacteroidetes, <i>Chlorobium</i>	90.86/8.66
Icelandic lake	3Ice, bin 1	Alphaproteobacteria, <i>Acidiphilium</i>	99.49/3.83
	3Ice, bin 5	Planctomycetes, Planctomycetaceae	97.73/12.65
	3Ice, bin 7	Actinobacteria, <i>Acidimicrobium ferrooxidans</i>	84.48/15.83
	PMA 4Ice, bin 5	Unknown bacterium	96.30/19.97
	PMA 4Ice, bin 4	Acidobacteria, <i>Acidobacterium capsulatum</i>	95.85/6.47
	PMA 4Ice, bin 20	Bacteroidetes	80.77/6.68
Permafrost	5SOB, bin1	Gammaproteobacteria, <i>Pseudomonas</i> sp.	98.70/0.94
	5SOB, bin3	Bacteroidetes, <i>Flavobacterium</i>	84.36/15.26
	PMA 6SOB, bin1	Gammaproteobacteria, <i>Pseudomonas</i> sp.	98.70/0.76

compared MASE sites-associated taxa with the non-extreme, but comparable sites (soil, groundwater, lake), the samples still grouped according to their sample type and MASE samples did not significantly separate from the non-extreme samples (Fig. 3c).

In a next step, we compared the microbial functions from MASE sites with all other sites mentioned above. The MASE environments revealed significantly higher levels in, e.g. cobalt, zinc and cadmium resistance, functions involved in cold-shock, multidrug resistance/efflux pumps, periplasmic stress, phage-integration and excision, resistance to antibiotics and toxic compounds, virulence disease and defense (Fig. 3d), indicating that indeed the selected MASE sites are more extreme. Notably, a substantially lower level of functions involved in CO₂ fixation ($p = 0.051$) was observed for the MASE sites, reflecting a reduced capacity for autotrophy (Fig. 3d).

The omnipresence of organics could impair analogue studies

In the course of metagenomics analyses, we reconstructed a number of distinct draft genomes from the PMA treated and PMA-untreated sample sets. Overall, 15 bins of appropriate quality were obtained (70% completeness: max. 5% contamination, 80% completeness: max. 10% contamination, 90% completeness: max 20% contamination), which are summarized in Table 2.

Within the core genome of all 15 retrieved genome bins, 46 gene families and 2897 genes were identified. These were, amongst others, prophage and phage-related functions, pilus/flagella formation, detoxification, adaptation to stress, ferrous iron uptake, phosphorus metabolism and, again, heterotrophic lifestyle (amino-acids, sugar/mannose metabolism, protein degradation), confirming the observation that MASE-associated microorganisms are adapted to extreme environments, but prone to heterotrophic life style. Notably, intactness and activity of the MASE-associated microorganisms were also supported by calculations of their replication rates with iRep. This software uses the coverage information of high quality MAGs to determine copy numbers between the origin of replication and the terminus to define iRep values. These values can be further interpreted as a trade-off between the proportion of the population involved and the number of replication events (further details on interpreting iRep values are available at [66]). According to this analysis, at least one representative draft genome was actively replicating per MASE site. The highest activity (iRep 2.05, could refer to 25–100% of the population was actively replicating 1–4 times) was observed for *Acidimicrobium ferrooxidans* from the Icelandic lake.

The predisposition for heterotrophic life styles were further confirmed by the core functions of the retrieved isolates (see Additional file 1: Supplementary Information for more details on the cultivation approach; isolates are listed in Additional file 2: Supplementary Table 10; list of core functions is given in Additional file 2: Supplementary Table 11), as the majority of isolates obtained throughout the entire study showed a heterotrophic lifestyle (despite the attempt to grow autotrophs as well). When we predicted and compared the functional capacity of the isolates and the core microbiome in silico (Additional file 1: Supplementary Information Figure 12), we recognized a rather selective enrichment of particularly heterotrophic microorganisms in the cultivation approach that was used. Additionally, the core genome of the three model isolates (details also in the Additional file 1: Supplementary Information; 34 genes overlapping), revealed, besides ribosomal proteins, elongation factors and regulators, a number of cold-shock and stress-involved genes (such as *cspA*, *cspl*, *scpD* or *cspC*), indicating the necessity to adapt to extreme environments.

Based on all our analyses, we can confirm that the MASE sites are indeed extreme environments for the microorganisms, but also the central role of organic molecule metabolism became obvious. Recognizing this central principle, we determined the total organic carbon (TOC) of the MASE samples, which ranged from 0.12% (acidic lake) up to 22.7% (permafrost SOB; Additional file 1: Supplementary Figure 13). These values were largely in agreement with literature values from comparable sites [67]. Although the acidic lake was found to contain the lowest amount of TOC, the associated microbial functions showed the highest specialization in carbohydrate turnover, whereas the microbial community in the permafrost SOB sample showed the highest abundance for amino acid-associated functions.

Discussion

Organisms in extreme anoxic environments on Earth, and more speculatively on other planetary bodies, if it exists, would have to cope with diverse physical and chemical stressors. These include low water availability (desiccation, high salinity), extreme temperatures, high and low pressures, nutrient and oxygen limitations and radiation [68]. In order to assess habitability for an extra-terrestrial environment, researchers aim to understand the chemical and physical boundaries of life in general. For this, they analyze suitable model organisms, including bacteria (e.g. *Hydrogenothermus marinus*, a desiccation tolerant bacterium able to grow in the presence of perchlorates [69]), Archaea (e.g. methanogens [70] or haloarchaea [71]) and fungi [72], but also natural microbial communities thriving in analogue biotopes [5, 73].

Planetary analogues are selected on the basis of geology, mineralogy, topography and environmental conditions, depending on the planet or body of interest, such as Mars or the Icy Moons. One of the most obvious model ecosystems are permafrost environments [58], deserts and high-salt biotopes, as well as Antarctic and subsurface environments [3]. It has been discussed that these analogue environments are incapable of combining all chemical and physical characteristics of interest; however, these environments were considered good models to analyze the impact of one or a few extreme conditions on the biology therein.

In this study, we performed one further step in optimizing research for Mars-analogue sites, by the exclusion of oxygenated model environments. Samples from selected analogue sites were collected under anoxic conditions, and the living microbial community thriving therein was analyzed by a broad combination of anaerobic cultivation and molecular methodology to address the following questions: Which Bacteria and Archaea are alive under the extreme, anoxic, environmental conditions? Which functions do they possess? Can we cultivate them? Is there a core microbiome of all sites? Are there general principles of anaerobic microbial communities with impact on the habitability assessment and the search for life on Mars and beyond?

The retrieved data were intended to optimize the definition of habitable extraterrestrial environments and to deliver important information for future life detection missions.

To our knowledge, our study is the first that uses propidium monoazide (PMA) to mask background DNA from dead microorganisms in Mars-analogue extreme settings. This method allowed us to retrieve information on a vast diversity of the microbiomes and archaeomes of the intact and thus probably living microbial communities. Overall, the lowest proportion of intact (presumably alive) species signatures was obtained from permafrost samples and samples from the acidic environments (Additional file 2: Supplementary Table 7). The high amount of disrupted material therein was confirmed also through metagenomics analysis, and indicated by the high TOC value (high amount of microbial debris). Thus, the permafrost environment appeared to be one of the most extreme MASE biotopes.

Notably, we identified stringent similarities of the taxonomic profiles of microbial communities thriving in acidic and saline MASE environments (Fig. 2). This is particularly interesting, as acidic and saline environmental parameters are a likely combination for, e.g. Hesperian Mars settings [74].

The cultivation assay implemented in the MASE project comprised 1131 enrichment attempts, that resulted in 69 stable enrichments and 30 anaerobic, pure

bacterial isolates and one archaeon (*Methanomethylovorans* sp.), all already or are currently being made available for the scientific community through the German culture collection DSMZ. It is our intention to exploit those model organisms and to analyze their physiological properties to understand their resistances to, e.g. radiation and to estimate, whether they could survive extraterrestrial conditions (see also [75–78]). Information on a diverse set of (anaerobic) taxa, which were present in all sampling sites could be retrieved, and also several signatures of known taxa with astrobiological relevance were detected [23, 79–82].

A cosmopolitan group of (mostly) mixotrophic and anaerobic microorganisms was able to reside in all MASE sites, amongst them *Opitutus* and *Paludibacter* [63, 64]. Notably, the co-existence of *Opitutus* and *Paludibacter* taxa has been already observed earlier, e.g. involved in anaerobic cycling of carbon in permafrost samples [83]. Both genera, however, are considered to be specialized on complex organic compound degradation [84].

In general, the MASE core microorganisms are of great interest, since they could represent excellent model organisms for studying adaptation and resistance properties. Their obviously very flexible lifestyle, combined with specific resistance and adaptation capacities, could allow them to adapt quickly and thus to follow chemical and physical evolution of a certain environment.

The general, functional principles of all MASE microbial communities were two-fold: on the one hand, microbial signatures were characterized by resilience and resistance against different characteristics potentially representing extraterrestrial stressors such as (metal) ionic strength (increased cobalt, zinc, and cadmium resistances) and, e.g. freezing (increased cold shock-involved functions, Fig. 3).

On the other hand, all levels of our analysis indicated a strong dependency of the terrestrial microbial communities on complex organic matter, in both moderate and extreme environments, as indicated, e.g. by a lowered CO₂ fixation capacity in MASE sites (Fig. 3).

Even if we, in our study, ruled out the terrestrial oxygen contamination in order to match extraterrestrial conditions as much as possible, the analogue sites were characterized by the (terrestrial) omnipresence of organic compounds, shaping the microbial communities substantially.

Conclusions and outlook

Our study has contributed novel insights into the microbiology of analogue sites. In particular, a number of highly valuable model organisms has been retrieved, which directly feeds into the other goals of the MASE project, namely studying the limits of growth of selected

isolates, deciphering the molecular principles of resistances [78], analysing the genomic and metabolomic inventory of representative microbes [75], studying the fossilization processes and detectability of biomarkers during artificial fossilization [85] and the optimization of automated life detection [1, 86]. However, numerous tasks remain to be accomplished in future. These include (i) a comprehensive re-evaluation of the potential impact of the terrestrial organic load on the biology of analogue environments for space research, (ii) the extension of the dataset with additional microbiome data from other extreme environments, (iii) further testing of the hypothesis that a core microbiome in extreme anoxic environment exists, (iv) further identification of so-far unknown microbial taxa found in our molecular survey (v) and the improvement of (targeted) cultivation strategies to increase the available culture collection of microorganisms thriving in extreme, astrobiology-relevant terrestrial sites.

Supplementary Information

The online version contains supplementary material available at <https://doi.org/10.1186/s40168-020-00989-5>.

Additional file 1: Supplementary Figure 1: Analogue astronauts in the field during the AMADEE-15 Mars-landing simulation mission. **Supplementary Figure 2:** CLSM micrographs of FISH from sulfidic spring samples. **Supplementary Figure 3:** Archaeal signatures obtained using the Archaea-targeting primer set. **Supplementary Figure 4:** Archaeal signatures obtained with the universal primer set. **Supplementary Figure 5:** Bacterial signatures obtained with the "universal" primer set, PMA untreated samples. **Supplementary Figure 6:** The core taxa of the hypersaline environment and the acidic environment*. **Supplementary Figure 7:** Parameters shaping the community. **Supplementary Figure 8:** The MASE core microbial taxa. **Supplementary Figure 9:** The core microbiome of PMA untreated samples depicted in a Venn diagram. **Supplementary Figure 10:** Phylum-level, taxonomic information derived from the metagenomic dataset. **Supplementary Figure S11:** Predicted KEGG3 pathways (Tax4fun) and network of functional genes of the MASE site microbiomes. **Supplementary Figure 12:** Comparison of metabolic pathways for the core microbiome and the cultivated microorganisms. **Supplementary Figure 13:** Total organic carbon in MASE samples, in %.

Additional file 2: Supplementary Table 1: Description of the MASE sampling sites. **Supplementary Table 2:** RSV table resulted by the "universal" primer approach. **Supplementary Table 3:** RSV table resulted by the "Archaea" primer approach. **Supplementary Table 4:** RSV table resulted by the "universal" primer approach (including negative controls). **Supplementary Table 5:** RSV resulted by the "Archaea" primer approach (including negative controls). **Supplementary Table 6:** Diversity calculations based on the archaea-targeted approach for each sampling site and biotope. **Supplementary Table 7:** Diversity calculations based on the microbiome data (universal dataset) for each sampling site and environment. **Supplementary Table 8:** Bacterial, archaeal and eukaryotic taxonomic information derived from the metagenomics dataset. **Supplementary Table 9:** Comparison with metagenomic datasets from non-MASE sites. **Supplementary table 10:** Comprehensive information on isolates obtained within the frame of the MASE project and their respective environmental source. **Supplementary Table 11:** Core genome of retrieved genome bins.

Acknowledgements

We thank Prof. Reinhard Wirth⁺ (University of Regensburg) for fruitful discussions, Manuela-Raluca Pausan (Medical University of Graz) for

proofreading and Samuel Payler (University of Edinburgh) for providing DNA. We also thank Thomas Rattei (University of Vienna) for providing computational power at the LISC cluster.

Authors' contributions

AB, PS, CC, PR, KBV, FG, FW, NW, PC, LGD, FG, MM, RA, PE, EM, PV, VM, GT, JS and CME conceptualized the study, and/or performed the sampling and/or supported data analysis. AB, LW, SD, AM, EM, AE, MB, AR and CME performed microbiome/metagenome analyses and FISH. AB, CC, PR and CME wrote the manuscript. All other authors corrected the draft and provided discussion. The author(s) read and approved the final manuscript.

Funding

MASE was supported by European Community's Seventh Framework Program (FP7/2007-2013) under Grant Agreement n° 607297. A. Riedo acknowledges the financial support from the Swiss National Science Foundation (SNSF). The authors acknowledge the support of the ZMF Galaxy Team: Core Facility Computational Bioanalytics, Medical University of Graz, funded by the Austrian Federal Ministry of Education, Science and Research, Hochschulraum-Strukturmittel 2016 grant as part of BioTechMed Graz.

Availability of data and materials

The datasets generated and/or analyzed during the current study are either included as supplementary information/figure/table, or deposited at EMBL ENA, project numbers PRJEB18706 and PRJEB28336.

Ethics approval and consent to participate

Not applicable.

Consent for publication

Not applicable.

Competing interests

The authors declare that they have no competing interests.

Author details

¹Diagnostic and Research Institute of Hygiene, Microbiology and Environmental Medicine, Medical University of Graz, Graz, Austria. ²Department of Microbiology and Archaea Center, University of Regensburg, Regensburg, Germany. ³UK Center for Astrobiology, School of Physics and Astronomy, University of Edinburgh, Edinburgh, UK. ⁴Institute of Aerospace Medicine, Radiation Biology Department, German Aerospace Center (DLR), Cologne, Germany. ⁵Centre de Biophysique Moléculaire, Centre National de la Recherche Scientifique (CNRS), Orléans, France. ⁶European Science Foundation (ESF), Strasbourg, France. ⁷Instituto Nacional de Técnica Aeroespacial – Centro de Astrobiología (INTA-CAB), Madrid, Spain. ⁸Centro de Biología Molecular Severo Ochoa, Universidad Autónoma de Madrid (UAM), Madrid, Spain. ⁹Leiden Observatory, Universiteit Leiden, Leiden, The Netherlands. ¹⁰MATIS, Reykjavik, Iceland. ¹¹Faculty of Food Science and Nutrition, University of Iceland, Reykjavik, Iceland. ¹²Institute of Environmental Biotechnology, Graz University of Technology, Graz, Austria. ¹³Alfred Wegener Institute Helmholtz Centre for Polar and Marine Research, Periglacial Research Unit, Potsdam, Germany. ¹⁴Division of Endocrinology and Metabolism, Department of Internal Medicine, Graz, Austria. ¹⁵Sackler Laboratory for Astrophysics, Leiden Observatory, Leiden University, Leiden, The Netherlands. ¹⁶BioTechMed, Graz, Austria.

Received: 18 June 2020 Accepted: 29 December 2020

Published online: 18 February 2021

References

- Cockell CS, Schwendner P, Perras A, Rettberg P, Beblo-Vranesevic K, Bohmeier M, et al. Anaerobic microorganisms in astrobiological analogue environments: from field site to culture collection. *Int J Astrobiol.* 2017;1–15.
- Martins Z, Cottin H, Kotler JM, Carrasco N, Cockell CS, de la Torre NR, et al. Earth as a tool for astrobiology—a European perspective. *Space Sci Rev.* 2017;209:43–81.
- Preston LJ, Dartnell LR. Planetary habitability: lessons learned from terrestrial analogues. *Int J Astrobiol.* 2014;13:81–98.
- Preston LJ, Grady M, Barber S. TN2: the catalogue of planetary analogues. *The Open University* 2012.

5. Schulze-Makuch D, Wagner D, Kounaves SP, Mangelsdorf K, Devine KG, de Vera J-P, et al. Transitory microbial habitat in the hyperarid Atacama Desert. *Proc Natl Acad Sci National Acad Sciences*. 2018;115(11):2670–5.
6. Payler SJ, Biddle JF, Coates AJ, Cousins CR, Cross RE, Cullen DC, et al. Planetary science and exploration in the deep subsurface: results from the MINAR Program, Boulby Mine, UK. *Int J Astrobiol*. 2016;16:114–29.
7. Barth VC Jr, Cattani F, Ferreira CAS, de Oliveira SD. Sodium chloride affects propidium monoazide action to distinguish viable cells. *Anal Biochem*. 2012;428:108–10.
8. McEwen AS, Dundas CM, Mattson SS, Toigo AD, Ojha L, Wray JJ, et al. Recurring slope lineae in equatorial regions of Mars. *Nat Geosci*. 2014;7:53.
9. McEwen AS, Ojha L, Dundas CM, Mattson SS, Byrne S, Wray JJ, et al. Seasonal flows on warm Martian slopes. *Science (80-)*. *Am Assoc Adv Sci*. 2011;333:740–3.
10. Grimm RE, Harrison KP, Stillman DE. Water budgets of martian recurring slope lineae. *Icarus*. 2014;233:316–27.
11. Nocker A, Sossa-Fernandez P, Burr MD, Camper AK. Use of propidium monoazide for live/dead distinction in microbial ecology. *Appl Environ Microbiol*. 2007;73:5111–7.
12. Perras AK, Wanner G, Klingl A, Mora M, Auerbach AK, Heinz V, et al. Grappling archaea: ultrastructural analyses of an uncultivated, cold-loving archaeon, and its biofilm. *Front Microbiol*. 2014;5:1–10.
13. Probst AJ, Holman H-YN, DeSantis TZ, Andersen GL, Birarda G, Bechtel HA, et al. Tackling the minority: sulfate-reducing bacteria in an archaea-dominated subsurface biofilm. *ISME J*. 2013;7:635–51.
14. Probst AJ, Moissl-Eichinger C. "Altiarchaeales": uncultivated archaea from the subsurface. *Life*. 2015;5:1381–95.
15. Probst AJ, Weinmaier T, Raymann K, Perras A, Emerson JB, Rattei T, et al. Biology of a widespread uncultivated archaeon that contributes to carbon fixation in the subsurface. *Nat Commun*. 2014;5:1–13.
16. Henneberger R, Moissl C, Amann T, Rudolph C, Huber R. New insights into the lifestyle of the cold-loving SM1 euryarchaeon: natural growth as a monospecies biofilm in the subsurface. *Appl Environ Microbiol*. 2006;72:192–9.
17. Perras AK, Daum B, Ziegler C, Takahashi LK, Ahmed M, Wanner G, et al. S-layers at second glance? Altiarchaeal grappling hooks (hami) resemble archaeal S-layer proteins in structure and sequence. *Front Microbiol*. 2015;6:543.
18. Norton CF, McGenty TJ, Grant WD. Archaeal halophiles (halobacteria) from two British salt mines. *Microbiology*. 1993;139:1077–81.
19. Woods PJE. The geology of Boulby mine. *Econ Geol*. 1979;74:409–18.
20. Woolman PF, Pearson VK, Cockell CS, Olsson K. Subsurface Halophiles: an analogue for potential life on Mars. In: UK Planetary Forum 12th Early Career Planetary Scientists' Meeting, University of Kent. 2015.
21. Thorarinsson S. Grænnavatn and Gestsstadvatn. *Geogr Tidsskr*. 1953;52:292–302.
22. Sanz JL, Rodríguez N, Díaz EE, Amils R. Methanogenesis in the sediments of Rio Tinto, an extreme acidic river. *Environ Microbiol*. 2011;13:2336–41.
23. Sánchez-Andrea I, Rodríguez N, Amils R, Sanz JL. Microbial diversity in anaerobic sediments at Rio Tinto, a naturally acidic environment with a high heavy metal content. *Appl Environ Microbiol*. 2011;77:6085–93.
24. Groemer G, Losiak A, Soucek A, Plank C, Zanardini L, Sejkora N, et al. The AMADEE-15 Mars simulation. *Acta Astronaut*. 2016;129:277–90.
25. Nocker A, Cheung C-Y, Camper AK. Comparison of propidium monoazide with ethidium monoazide for differentiation of live vs. dead bacteria by selective removal of DNA from dead cells. *J Microbiol Methods*. 2006;67:310–20.
26. Thompson LR, Sanders JG, McDonald D, Amir A, Ladau J, Locey KJ, et al. A communal catalogue reveals Earth's multiscale microbial diversity. *Nature*. 2017;551:457–63.
27. Caporaso JG, Lauber CL, Walters WA, Berg-Lyons D, Huntley J, Fierer N, et al. Ultra-high-throughput microbial community analysis on the Illumina HiSeq and MiSeq platforms. *ISME J*. 2012;6:1621–4.
28. Raskin L, Stromley JM, Rittmann BE, Stahl DA. Group-specific 16S rRNA hybridization probes to describe natural communities of methanogens. *Appl Environ Microbiol*. 1994;60:1232–40.
29. Stahl DA, Amann R. Development and application of nucleic acid probes in bacterial systematics. In: Stackebrandt E, Goodfellow M, editors. *Nucleic Acid Tech Bact Syst*. Chichester: Wiley; 1991. p. 205–248.
30. Klindworth A, Pruesse E, Schweer T, Peplies J, Quast C, Horn M, et al. Evaluation of general 16S ribosomal RNA gene PCR primers for classical and next-generation sequencing-based diversity studies. *Nucleic Acids Res*. 2013;41:e1.
31. Probst AJ, Auerbach AK, Moissl-Eichinger C. Archaea on human skin. *PLoS One*. 2013;8:e65388.
32. Callahan BJ, McMurdie PJ, Rosen MJ, Han AW, Johnson AJA, Holmes SP. DADA2: High-resolution sample inference from Illumina amplicon data. *Nat Methods*. 2016;13:581–3.
33. Mora M, Perras A, Alekhova TA, Wink L, Krause R, Aleksandrova A, et al. Resilient microorganisms in dust samples of the International Space Station—survival of the adaptation specialists. *Microbiome*. 2016;4:65.
34. McMurdie PJ, Holmes S. phyloseq: an R package for reproducible interactive analysis and graphics of microbiome census data. *PLoS One*. 2013;8:e61217.
35. Thannesberger J, Hellinger H-J, Klymiuk I, Kastner M-T, Rieder FJJ, Schneider M, et al. Viruses comprise an extensive pool of mobile genetic elements in eukaryote cell cultures and human clinical samples. *FASEB J*. 2017;31:1987–2000.
36. Andrews S. FastQC: a quality control tool for high throughput sequence data. Babraham Bioinformatics. 2010. <https://www.bioinformatics.babraham.ac.uk/projects/fastqc/>. Accessed Jan 2021.
37. Martin M. Cutadapt removes adapter sequences from high-throughput sequencing reads. *EMBnet J*. 2011;17:10–12.
38. Schmieder R, Edwards R. Quality control and preprocessing of metagenomic datasets. *Bioinformatics*. 2011;27:863–4.
39. Buchfink B, Xie C, Huson DH. Fast and sensitive protein alignment using DIAMOND. *Nat Methods*. 2015;12:59–60.
40. Keegan KP, Glass EM, Meyer F, et al. MG-RAST, a metagenomics service for analysis of microbial community structure and function. In: *Microb Environ Genomics*. 2016:207–33.
41. Huson DH, Mitra S. Introduction to the analysis of environmental sequences: metagenomics with MEGAN. *Evol Genomics*. 2012:415–29.
42. Zakrzewski M, Proietti C, Ellis JJ, Hasan S, Brion M-J, Berger B, et al. Calypso: a user-friendly web-server for mining and visualizing microbiome–environment interactions. *Bioinformatics*. 2016;33:782–3.
43. Bolger AM, Lohse M, Usadel B. Trimmomatic: A flexible trimmer for Illumina sequence data. *Bioinformatics*. 2014;30:2114–20.
44. Li D, Liu CM, Luo R, Sadakane K, Lam TW. MEGAHIT: an ultra-fast single-node solution for large and complex metagenomics assembly via succinct de Bruijn graph. *Bioinformatics*. 2014;31:1674–6.
45. Wu Y-W, Tang Y-H, Tringe SG, Simmons BA, Singer SW. MaxBin: an automated binning method to recover individual genomes from metagenomes using an expectation-maximization algorithm. *Microbiome*. *BioMed Central*. 2014;2:26.
46. Vallenet D, Labarre L, Rouy Z, Barbe V, Bocs S, Cruveiller S, et al. MaGe: A microbial genome annotation system supported by synteny results. *Nucleic Acids Res*. 2006;34:53–65.
47. Brown CT, Olm MR, Thomas BC, Banfield JF. Measurement of bacterial replication rates in microbial communities. *Nat Biotechnol*. 2016;34:1256.
48. Langmead B, Salzberg SL. Fast gapped-read alignment with Bowtie 2. *Nat Methods*. 2012;9:357.
49. Li H, Handsaker B, Wysoker A, Fennell T, Ruan J, Homer N, et al. The sequence alignment/map format and SAMtools. *Bioinformatics*. 2009;25:2078–9.
50. Huson DH, Auch AF, Qi J, Schuster SC. MEGAN analysis of metagenomic data. *Genome Res*. 2007;17:377–86.
51. Hong S, Bunge J, Leslin C, Jeon S, Epstein SS. Polymerase chain reaction primers miss half of rRNA microbial diversity. *ISME J*. 2009;3:1365–73.
52. Tremblay J, Singh K, Fern A, Kirton ES, He S, Woyke T, et al. Primer and platform effects on 16S rRNA tag sequencing. *Front Microbiol*. 2015;6:771.
53. Meng J, Xu J, Qin D, He Y, Xiao X, Wang F. Genetic and functional properties of uncultivated MCG archaea assessed by metagenome and gene expression analyses. *ISME J*. 2014;8:650–9.
54. Evans PN, Parks DH, Chadwick GL, Robbins SJ, Orphan VJ, Golding SD, et al. Methane metabolism in the archaeal phylum Bathyarchaeota revealed by genome-centric metagenomics. *Science*. 2015;350:434–8.
55. Brochier-Armanet C, Boussau B, Gribaldo S, Forterre P. Mesophilic Crenarchaeota: proposal for a third archaeal phylum, the Thaumarchaeota. *Nat Rev Microbiol*. 2008;6:245–52.
56. Kral TA, Bekkum CR, McKay CP. Growth of methanogens on a Mars soil simulant. *Orig Life Evol Biosph*. 2004;34:615–26.
57. Amils R, González-Toril E, Aguilera A, Rodríguez N, Fernández-Remolar D, Gómez F, et al. From Rio Tinto to Mars: the terrestrial and extraterrestrial ecology of acidophiles. *Adv Appl Microbiol*. 2011:41–70.

58. Gilichinsky DA, Wilson GS, Friedmann EI, McKay CP, Sletten RS, Rivkina EM, et al. Microbial populations in Antarctic permafrost: biodiversity, state, age, and implication for astrobiology. *Astrobiology*. 2007;7:275–311.
59. Neelson KH, Cox BL. Microbial metal-ion reduction and Mars: extraterrestrial expectations? *Curr Opin Microbiol*. 2002;5:296–300.
60. Banfield JF, Moreau JW, Chan CS, Welch SA, Little B. Mineralogical biosignatures and the search for life on Mars. *Astrobiology*. 2001;1:447–65.
61. Price A, Pearson VK, Schwenzner SP, Miot J, Olsson-Francis K. Nitrate-dependent iron oxidation: a potential Mars metabolism. *Front Microbiol*. 2018;9:513.
62. Rettberg P, Antunes A, Brucato J, Cabezas P, Collins G, Haddaji A, et al. Biological contamination prevention for outer solar system moons of astrobiological interest: what do we need to know? *Astrobiology*. 2019;19:951–74.
63. Ueki A, Akasaka H, Suzuki D, Ueki K. *Paludibacter propionicigenes* gen. nov., sp. nov., a novel strictly anaerobic, Gram-negative, propionate-producing bacterium isolated from plant residue in irrigated rice-field soil in Japan. *Int J Syst Evol Microbiol*. 2006;56:39–44.
64. Chin K-J, Liesack W, Janssen PH. *Opiritatus terrae* gen. nov., sp. nov., to accommodate novel strains of the division Verrucomicrobia isolated from rice paddy soil. *Int J Syst Evol Microbiol*. 2001;51:1965–8.
65. AlBhauer KP, Wemheuer B, Daniel R, Meinicke P. Tax4Fun: predicting functional profiles from metagenomic 16S rRNA data. *Bioinformatics*. 2015;31:2882–4.
66. iRep [Internet]. Available from: <https://github.com/christophertbrown/iRep>. Accessed Jan 2021.
67. Strauss J, Schirmer L, Mangelsdorf K, Eichhorn L, Wetterich S, Herzsich U. Organic-matter quality of deep permafrost carbon—a study from Arctic Siberia. *Biogeosciences*. 2015;12:2227–45.
68. Moissl-Eichinger C, Cockell C, Rettberg P. Venturing into new realms? *Microorganisms in space FEMS Rev*. 2016;50:722–37.
69. Beblo-Vranesevic K, Huber H, Rettberg P. High tolerance of *Hydrogenothermus marinus* to sodium perchlorate. *Front Microbiol*. 2017;8:1369.
70. Taubner R-S, Schleper C, Firneis MG, Rittmann SK-M. Assessing the ecophysiology of methanogens in the context of recent astrobiological and planetological studies. *Life*. 2015;5:1652–86.
71. Fendrihan S. The extremely halophilic microorganisms, a possible model for life on other planets. *Curr Trends Nat Sci Vol*. 2017;6:147–51.
72. Onofri S, Selbmann L, Pacelli C, Zucconi L, Rabbow E, de Vera J-P. Survival, DNA, and ultrastructural integrity of a cryptoendolithic Antarctic fungus in Mars and lunar rock analogues exposed outside the International Space Station. *Astrobiology*. 2018;19:170–82.
73. McKay CP, Andersen D, Davila A. Antarctic environments as models of planetary habitats: University Valley as a model for modern Mars and Lake Untersee as a model for Enceladus and ancient Mars. *Polar J*. 2017;7:303–18.
74. Andrews-Hanna JC, Lewis KW. Early Mars hydrology: 2. Hydrological evolution in the Noachian and Hesperian epochs. *J Geophys Res Planets*. 2011;116(E2).
75. Schwendner P, Bohmeier M, Rettberg P, Beblo-Vranesevic K, Gaboyer F, Moissl-Eichinger C, et al. Beyond chloride brines: Variable metabolomic responses in the anaerobic organism *Yersinia intermedia* MASE-LG-1 to NaCl and MgSO₄ at identical water activity. *Front Microbiol*. 2018;9:335.
76. Schwendner P, Cockell CS, Perras A, Rettberg P, Beblo-Vranesevic K, Bohmeier M, et al. Metabolic response of *Yersinia intermedia* MASE-LG1 to osmotic stress. *EANA*. 2017. <https://elib.dlr.de/114438/>. Accessed Jan 2021.
77. Gaboyer F, Milbeau C, Bohmeier M, Schwendner P, Vannier P, Beblo-Vranesevic K, et al. Mineralization and Preservation of an extremotolerant bacterium isolated from an early Mars analog environment. *Sci Rep*. 2017;7:1–14.
78. Beblo-Vranesevic K, Bohmeier M, Perras AKAK, Schwendner P, Rabbow E, Moissl-Eichinger C, et al. The responses of an anaerobic microorganism, *Yersinia intermedia* MASE-LG-1 to individual and combined simulated Martian stresses. *PLoS One*. 2017;12:e0185178.
79. Amaral-Zettler LA, Zettler ER, Theroux SM, Palacios C, Aguilera A, Amils R. Microbial community structure across the tree of life in the extreme Rio Tinto. *ISME J*. 2011;5:42–50.
80. Rivkina E, Laurinavichius K, McGrath J, Tiedje J, Shcherbakova V, Gilichinsky D. Microbial life in permafrost. *Adv Sp Res*. 2004;33:1215–21.
81. Ganzert L, Jurgens G, Münster U, Wagner D. Methanogenic communities in permafrost-affected soils of the Laptev Sea coast, Siberian Arctic, characterized by 16S rRNA gene fingerprints. *FEMS Microbiol Ecol*. 2007;59:476–88.
82. Blank JG, Green SJ, Blake D, Valley JW, Kita NT, Treiman A, et al. An alkaline spring system within the Del Puerto Ophiolite (California, USA): a Mars analog site. *Planet Space Sci*. 2009;57:533–40.
83. Yang S, Wen X, Shi Y, Liebner S, Jin H, Perfumo A. Hydrocarbon degraders establish at the costs of microbial richness, abundance and keystone taxa after crude oil contamination in permafrost environments. *Sci Rep*. 2016;6:37473.
84. Dai Y, Yan Z, Jia L, Zhang S, Gao L, Wei X, et al. The composition, localization and function of low-temperature-adapted microbial communities involved in methanogenic degradations of cellulose and chitin from Qinghai-Tibetan Plateau wetland soils. *J Appl Microbiol*. 2016;121:163–76.
85. Gaboyer F, Le Milbeau C, Bohmeier M, Schwendner P, Vannier P, Beblo-Vranesevic K, et al. Mineralization and preservation of an extremotolerant Bacterium isolated from an early Mars analog environment. *Sci Rep*. 2017;7:1–14.
86. Garcia-Descalzo L, Parro V, Garcia-Villadangos M, Cockell CS, Moissl-Eichinger C, Perras A, et al. Microbial markers profile in anaerobic Mars analogue environments using the LDChip (Life Detector Chip) antibody microarray core of the SOLID (Signs of Life Detector) platform. *Microorganisms*. 2019;7:365.

Publisher's Note

Springer Nature remains neutral with regard to jurisdictional claims in published maps and institutional affiliations.

Ready to submit your research? Choose BMC and benefit from:

- fast, convenient online submission
- thorough peer review by experienced researchers in your field
- rapid publication on acceptance
- support for research data, including large and complex data types
- gold Open Access which fosters wider collaboration and increased citations
- maximum visibility for your research: over 100M website views per year

At BMC, research is always in progress.

Learn more biomedcentral.com/submissions

