



**HAL**  
open science

## **RFLOMICS: R package and Shiny interface for Integrative analysis of omics data**

Nadia Bessoltane, Christine Paysant-Le-Roux, Gwendal Cueff, Audrey Hulot,  
Delphine Charif

► **To cite this version:**

Nadia Bessoltane, Christine Paysant-Le-Roux, Gwendal Cueff, Audrey Hulot, Delphine Charif.  
RFLOMICS: R package and Shiny interface for Integrative analysis of omics data. Journées ouvertes  
en biologie, informatique et mathématiques (JOBIM), Jul 2022, Rennes, France. . hal-04546139

**HAL Id: hal-04546139**

**<https://hal.science/hal-04546139>**

Submitted on 15 Apr 2024

**HAL** is a multi-disciplinary open access archive for the deposit and dissemination of scientific research documents, whether they are published or not. The documents may come from teaching and research institutions in France or abroad, or from public or private research centers.

L'archive ouverte pluridisciplinaire **HAL**, est destinée au dépôt et à la diffusion de documents scientifiques de niveau recherche, publiés ou non, émanant des établissements d'enseignement et de recherche français ou étrangers, des laboratoires publics ou privés.

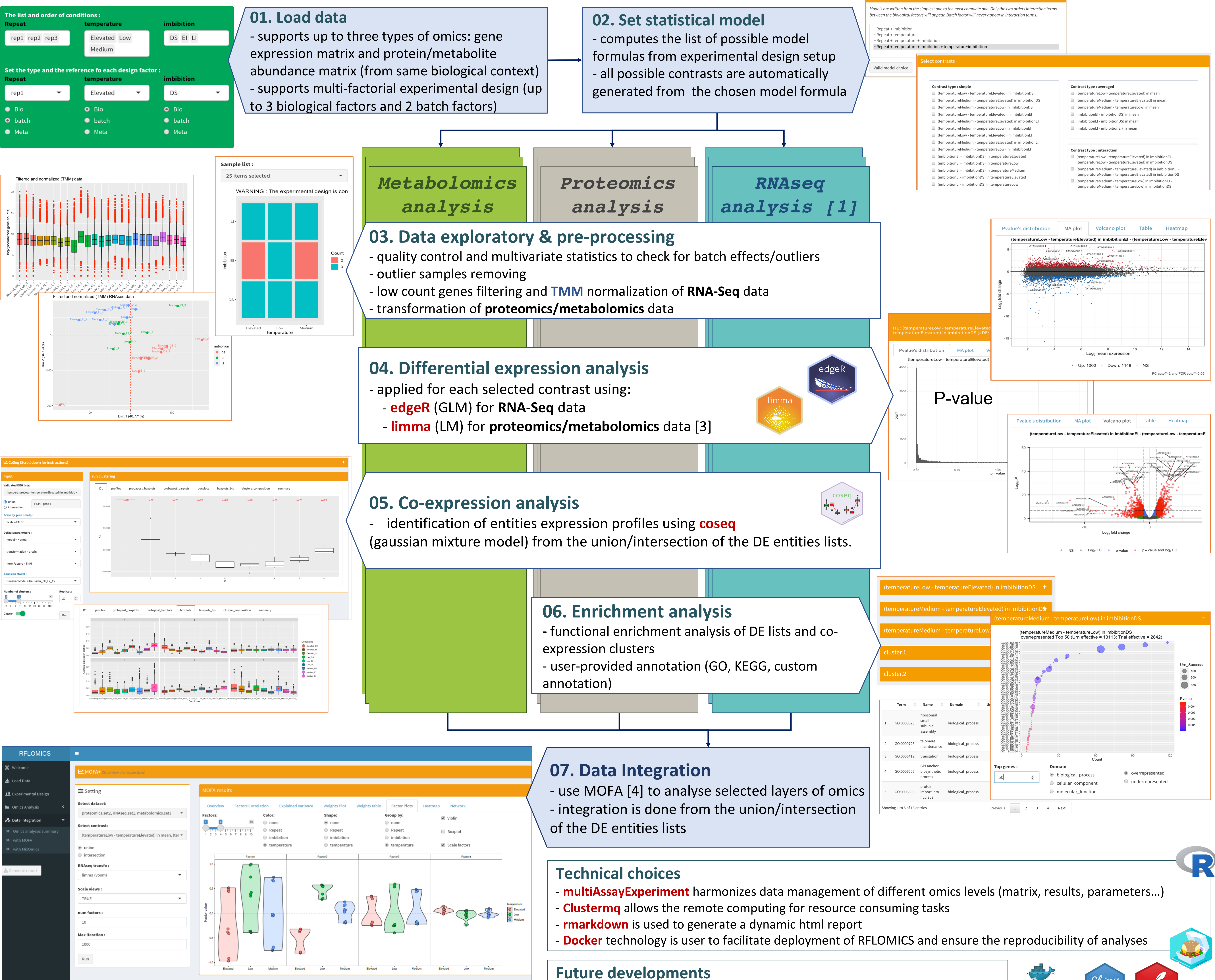
Nadia BESSOLTANE<sup>1</sup>, Christine PAYSANT-LE-ROUX<sup>2</sup>, Gwendal CUEFF<sup>1</sup>, Audrey HULOT<sup>1</sup>, Delphine CHARIF<sup>1</sup>

<sup>1</sup> Université Paris-Saclay, INRAE, AgroParisTech, Institut Jean-Pierre Bourgin, 78000, Versailles, France  
<sup>2</sup> Université Paris-Saclay, CNRS, INRAE, Univ Evry, Institute of Plant Sciences Paris-Saclay (IPS2), 91405, Orsay, France.

[nadia.bessoltane@inrae.fr](mailto:nadia.bessoltane@inrae.fr) & [delphine.charif@inrae.fr](mailto:delphine.charif@inrae.fr)

The acquisition of multi-omics data in the context of complex experimental design is a widely used practice to identify entities and characterise related biological processes. The investigation of each omic layer is a good way to explore and extract relevant biological variability, and restrict statistical integration to only pertinent omics levels and features. The analysis of heterogeneous data remains a technical challenge with the needs of relevant methods and parameters to take into account data specificity. Moreover, applying different statistical methods from several tools could also implies important data management issues. In this context, we developed RFLOMICS, an R package with a shiny interface: it offers a guided, comprehensive and reproducible analysis in a framework which can manage several omics-data. The interface offers an interesting flexibility between the visualization of the results and the data manipulation (filtering, setting).

RFLOMICS is available at : <https://forgemia.inra.fr/flomics/rflomics>



## Acknowledgements

This project is part of CATI Sysmics [2]. We thank ML. Martin-Magniette, V. Brunaud, G. Rigaiil (IPS2) for helpful discussion and feedback. We also thank L. Rajou (IJPB) for given access to Ecoseed project data.

## References

- Lambert, I, et al. (2020). "DiCoExpress: a tool to process multifactorial RNAseq experiments from quality controls to co-expression analysis through differential analysis based on contrasts inside GLM models". Plant Methods.
- <https://sysmics.cati.inrae.fr/>
- Efstathiou G, et al. (2017). ProteoSign: an end-user online differential proteomics statistical analysis platform. Nucleic Acids Res.
- Argelaguet, Ricard, et al. "MOFA+: a statistical framework for comprehensive integration of multi-modal single-cell data." Genome biology 21.1 (2020): 1-17.