



HAL
open science

Higher order topological defects in a moiré lattice

Eugenio Gambari, Sebastian Meyer, Sacha Guesne, Pascal David, François Debontridder, Laurent Limot, Fabrice Scheurer, Christophe Brun, Bertrand Dupé, Tristan Cren, et al.

► **To cite this version:**

Eugenio Gambari, Sebastian Meyer, Sacha Guesne, Pascal David, François Debontridder, et al.. Higher order topological defects in a moiré lattice. 2024. hal-04544986

HAL Id: hal-04544986

<https://hal.science/hal-04544986>

Preprint submitted on 13 Apr 2024

HAL is a multi-disciplinary open access archive for the deposit and dissemination of scientific research documents, whether they are published or not. The documents may come from teaching and research institutions in France or abroad, or from public or private research centers.

L'archive ouverte pluridisciplinaire **HAL**, est destinée au dépôt et à la diffusion de documents scientifiques de niveau recherche, publiés ou non, émanant des établissements d'enseignement et de recherche français ou étrangers, des laboratoires publics ou privés.



Distributed under a Creative Commons Attribution 4.0 International License

Higher order topological defects in a moiré lattice

Eugenio Gambari¹, Sebastian Meyer^{2,3,4}, Sacha Guesne¹,
Pascal David¹, François Debontridder¹, Laurent Limot⁵,
Fabrice Scheurer⁵, Christophe Brun¹, Bertrand Dupé^{2,3,4},
Tristan Cren¹, Marie Hervé^{1*}

^{1*}Sorbonne Université, CNRS, Institut des Nanosciences de Paris,
UMR7588, 4 place Jussieu, Paris, 75005, France.

²Université de Liège, Nanomat/Q-mat/CESAM, Sart Tilman, City,
B-4000, Belgium.

³Université de Liège, TOM/Q-mat/CESAM, Sart Tilman, City, B-4000,
Belgium.

⁴Fonds de la Recherche Scientifique (FRS-FNRS), Bruxelles, Belgium.

⁵Université de Strasbourg, CNRS, Institut de Physique et Chimie des
Matériaux de Strasbourg, UMR7504, Strasbourg, F-67000, France.

*Corresponding author(s). E-mail(s):
marie.herve@sorbonne-universite.fr;

Abstract

Topological defects are ubiquitous, they manifest in a wide variety of systems such as liquid crystals, magnets or superconductors. The recent quest for non-abelian anyons in condensed matter physics stimulates the interest for topological defects since they can be hosted in vortices in quantum magnets or topological superconductors. In addition to these vortex defects, in this study we propose to investigate edge dislocations in 2D magnets as new building blocks for topological physics since they can be described as vortices in the structural phase field. Here we demonstrate the existence of higher order topological dislocations within the higher order moiré pattern of the van der Waals 2D magnet CrCl_3 deposited on Au(111). Surprisingly, these higher order dislocations arise from ordinary simple edge dislocations in the atomic lattice of CrCl_3 . We provide a theoretical framework explaining the higher order dislocations as vortex with a winding Chern number of 2. We expect that these original defects could stabilize some anyons either in a 2D quantum magnet or within a 2D superconductor coupled to it.

Keywords: Moiré pattern, Topological defects, Van der Waals materials, Scanning Tunneling microscopy, Scanning Tunneling Spectroscopy, Density functional theory, Transition metal surfaces

1 Introduction

Van der Waals materials are emerging as extremely versatile building blocks for many fields of research, both at the fundamental and applied level [1, 2]. They offer tremendous possibilities for fine-tuning spintronics [3, 4], superconducting [5–7], nanoelectronics [1, 2], optical devices [8, 9]. The toolbox of these heterostructures is continuously growing with for instance the recent discovery of ferromagnetic order in the family of chromium trihalides down to the monolayer limit, CrX_3 ($X = \text{I, Br, Cl}$) [10–14]. Due to the absence of magnetic anisotropy in the plane when the CrCl_3 monolayer is decoupled from its substrate it behaves as a 2D XY quantum magnet [14] that can host non-abelian anyons in the center of magnetic vortex cores [15]. Their integration in van der Waals heterostructure is expected to lead to a wealth of new exotic effects. Stacking chromium trihalides with transition metal dichalcogenides that exhibits a strong Ising spin-orbit coupling appears as a versatile and promising route towards the development of hybrid magnetic/superconducting systems [5, 6]. For instance, topological superconductivity has recently been shown to appear in $\text{CrBr}_3/\text{NbSe}_2$ heterostructures [5, 6]. The proposed mechanisms leading to a topological order in these hybrid structures was intimately related to the presence of a moiré pattern [6]. Several studies have related the observation of a moiré structure to the mismatch between the CrX_3 monolayers and their substrate [6, 14, 16, 17]. The orientational degree of freedom may add a supplementary possibility to tune the moiré, as observed in twisted CrX_3 bilayers [18–20]. The physics of moiré is quite complex, a same structure might exhibit several moiré patterns of different orders, as observed in Gr/Ir or Gr/Pt systems [21–27]. Higher order structures appear when, in a particular direction, n_1 lattice periods of layer 1 almost match with n_2 periods of layer 2. Correspondingly, in the reciprocal space, a higher order moiré appears when a small enough wave vector $\mathbf{q}_{\text{moiré}} = m_1\mathbf{q}_1 - m_2\mathbf{q}_2$ can be define with \mathbf{q}_i being the Bragg vectors of the two lattices and $|\mathbf{q}_{\text{moiré}}| \ll \text{Min}(|\mathbf{q}_1|, |\mathbf{q}_2|)$. Ordinary moiré correspond to the case where $m_1 = m_2 = 1$. Interestingly, the CrX_3 compounds have a unit cell almost twice the one of dense metals, that would naturally lead to a second order moiré where $m_1 = 1$ and $m_2 = 2$.

In the CrX_3 family, till now, the magnetisation was shown to be essentially collinear [10, 11, 14, 28, 29]. However, in the CrI_3 bilayers, some hint of non-collinear magnetism was found. It has been related to the moiré pattern responsible of a non-negligible spatial modulation of the magnetic exchange interaction [18, 20, 30–32]. This confers an additional interest for the CrX_3 family. Indeed, a non-collinear magnetic order is predicted to be a major ingredient for inducing a topological order in superconducting/magnetic heterostructures [33–37]. Topological superconductors may host Majorana bound states localized on topological defects such as superconducting vortex cores or spin-orbit vortices [38], but other kind of defects such as dislocations could

also be of interest since edge dislocations are topological defects analogous to vortices [39, 40]. Interestingly, a moiré pattern in van der Waals materials seems to be a good candidate for exploring such physics since in graphene/Ir(111), graphene bilayers and h-BN/Ru [41–44], simple edge dislocations in the atomic lattice lead to dislocations in the moiré pattern.

Here we report that CrCl₃ deposited on a Au(111) substrate produces large two-dimensional islands that exhibit moiré pattern. In this particular case where the CrCl₃ lattice period is very close to twice the one of Au(111), the moiré pattern is of order 2. We show that the presence of an edge in the CrCl₃ lattice leads to a corresponding second order edge dislocation in the moiré. We demonstrate that this dislocation is a topological defect of Chern winding number of 2. These observations are explained within a unified model. We show that a higher order moiré pattern is a way to access to topological defects of higher Chern winding number. This unified model can be used as a predictive tool to build Van der Waals heterostructures in order to engineer topological defects of the desired Chern winding numbers.

2 Results

2.1 Superstructures in CrCl₃ monolayer on Au(111)

Crystalline chromium trichloride (CrCl₃) thin films were grown using molecular beam epitaxy (MBE) on a clean Au(111) substrate. Figure 1.a depicts a large scale STM topography of 0.6 monolayers (ML) of CrCl₃ measured at 4 K. The dashed red line highlights the presence of 1 ML thick islands of CrCl₃. Two distinct types of islands denoted as CrCl₃^α and CrCl₃^β were observed. Notably, these islands display two different preferred in-plane crystalline orientations rotated by 30° with respect to each other (see Supplementary note and figure S1.1 and S1.2) .

Throughout the manuscript, we will exclusively focus on discussing the CrCl₃^α islands. In these islands, the dense atomic directions of CrCl₃ aligns along the dense atomic directions of the Au substrate, the $\langle 1\bar{1}0 \rangle_{\text{Au}}$ direction. In these islands, our STM study shows that CrCl₃ is restoring the lattice parameter of a free standing CrCl₃ monolayer (see Supplementary note S1.1 and Supplementary figure S1.1 and S1.2). Remarkably, upon cooling down the sample to 4K, a superstructure emerges within these CrCl₃^α islands, which is not visible at room temperature (see Supplementary figure S2). Figure 1.b shows an STM image featuring two islands labelled A and B, which form a twin boundary (see Supplementary figure S4). Both islands exhibit an hexagonal superstructure with a periodicity of 6.2 nm. Their orientation differ by an angle of 13° (see green and dark dashed lines). Interestingly, the rotation of the superstructure does not seem, at first sight, to be correlated with a rotation of the atomic lattice. Figure 1.c presents the Fourier filtering of the STM topography of figure 1.b revealing the atomic structure of CrCl₃. Fourier filtering is obtained by selecting the Bragg spots marked in red and green in the fast Fourier transform (FFT) of Figure 1.c. The white dashed line serves as a visual guide, highlighting the dense atomic direction of CrCl₃ in both islands. At first sight, no misalignment of the crystal axis is detectable between these two islands. Additionally, within individual islands, the superstructure can exhibit a distortion, while the atomic lattice seems to

remain unaffected. This is shown in Figure 1.d and 1.e. Figure 1.d displays an STM topography acquired inside an island. The pink dashed line is a guide for the eye showing that the superstructure is not straight but slightly undulate. Figure 1.e shows the corresponding Fourier filtered image, revealing the atomic lattice of CrCl_3 . The white dashed line that follows the dense atomic direction seems to be insensitive to the change of orientation in the superstructure. Nevertheless, we conducted modelization of a moiré pattern in this system (see Supplementary note and figure S5) and show that this superstructure is indeed a moiré effect which shows an unusual high sensitivity to subtle variations in the atomic lattice orientation. The change of orientation of the moiré pattern shown in Figure 1.b and d is explained by a deviation angle in the atomic lattice of less than 1° . This system is rather rich with plenty of different moiré patterns induced by very little deviations of the CrCl_3 lattice with respect to Au(111). It could be a good platform to explore the influence of a moiré on the magnetic texture.

2.2 Role of Au(111) on the electronic structure

From our measurements, we deduce that CrCl_3 restores its lattice constant as in monolayer without substrate (see Supplementary note S1.1 and Supplementary figure S1.2), which is why we need to clarify the role of Au(111) on the electronic structure of the system. Scanning tunneling microscopy imaging reflects the local density of states and does not reflect directly the structure of the surfaces. It contains also some information on the local electronic structure that can eventually be modulated along the moiré pattern. We have performed tunneling spectroscopy experiments in order to elucidate the origin of the observed corrugation in the topographic measurements. Figure 2.a shows scanning tunneling spectroscopy data for different positions above the moiré pattern of $\text{CrCl}_3/\text{Au}(111)$ (from red, center, to blue, edge of the pattern). Regardless of the position, the measured conductance shows the same features, that is, no intensity below 0.2 eV; then there is a small increase at 0.2 eV followed by a plateau and then a strong increase after 0.3 eV, eventually followed by a plateau above 1.2 eV. The behavior of the conductance above 1.2 eV is strongly dependent on the tip position over the moiré pattern. Figure 2.c to f display 4 conductance maps revealing the spatial variation of the local density of states over the moiré. Figure 2.c, recorded at 0.2 eV, shows a pattern with a lower density of states in the center of the protrusion found in the topography sector (Figure 2.a). At 0.9 eV, the contrast is reversed, the highest density of state being in center of the protrusions (Figure 2.d). At 1.3 eV the contrast cancels (Figure 2.e), it can be seen in the tunneling spectra of Figure 2.a that it corresponds to a crossing point where all spectra cross. Above 1.3 eV a second contrast inversion is observed with a lower density of states in center over the protrusions (Figure 2.f). These measurements show that the moiré pattern produces quite clear spectroscopic features and thus we expect a strong effect due to the structural modulation of the moiré on the electronic and magnetic properties of the CrCl_3 layer. This is corroborated by the fact that the moiré pattern is not showing up in the topographic images at room temperature. We have performed a temperature ramp from 4 K to 130 K and we observed a gradual decrease of the moiré corrugation as the temperature is increased. We attribute this to the fact that the moiré seen in the topography is mainly of spectroscopic origin, i.e. there is no real corrugation

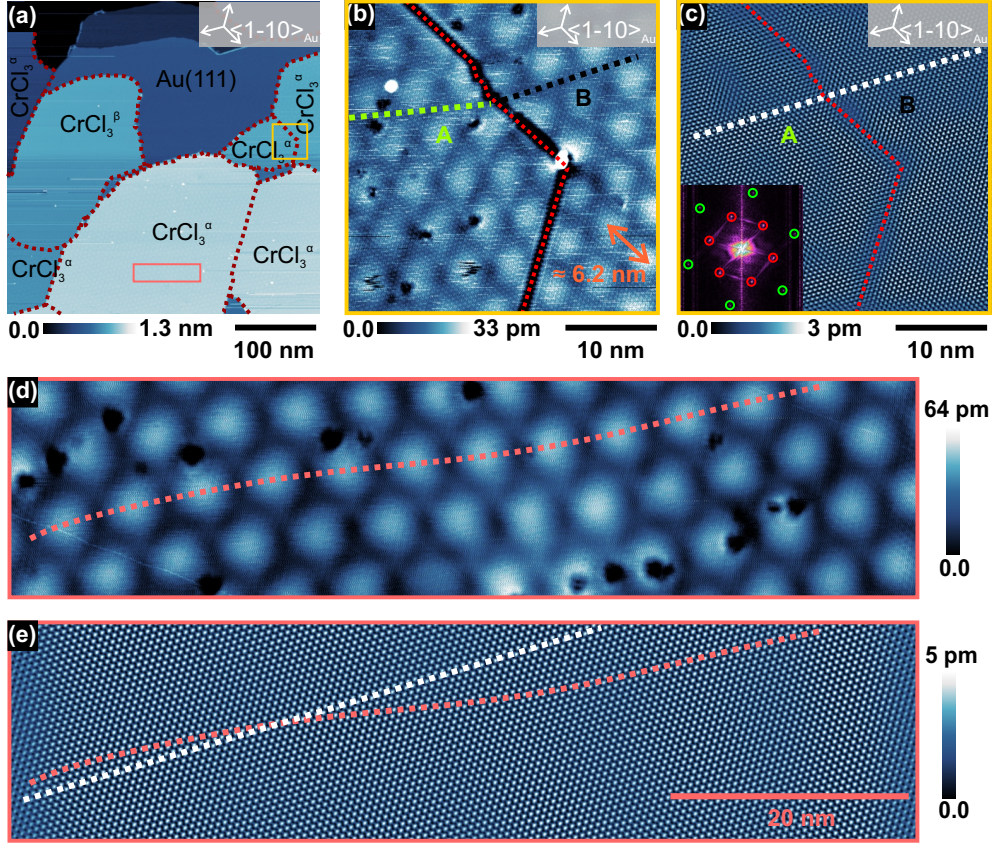


Fig. 1 Superstructure in CrCl₃/Au(111). (a) Large scale STM topography of 0.6 monolayer of CrCl₃ deposited on a Au(111) substrate. (b) Zoom in the yellow frame of (a) showing 2 structural domains where the superstructure orientation differs by an angle of 13°. The green and dark dashed lines are guides for the eyes to follow the orientation of the superstructure in the two domains, the red dashed line shows the separation between the two islands. (c) Fourier filtered image revealing the atomic lattice of CrCl₃ in the two structural domains. The white dashed line is a guide for the eye to follow the orientation of the atomic lattice. (d) STM topography acquired in the pink frame of (a) showing that the superstructure is undulating inside a CrCl₃ island, while no rotation of the atomic lattice can be detected in the Fourier filtered image (e). The pink and white dashed lines are eye-guides to follow the orientation of the superstructure and the atomic lattice inside the island. For all the STM images, the tunneling parameters are: Bias voltage, $U_0 = 2$ V; Tunneling current, $I_t = 200$ pA

(see Supplementary note and figure S3). The fact that the moiré reflects mainly a modulation of the local density of states suggests the importance to investigate the electronic band structure by density functional theory.

We therefore calculate the vacuum density of states (VacDOS) following the Tersoff & Hamann model [45–47] to compare and interpret the spectroscopy data. In Figure 2.b, we see the results for an unsupported CrCl₃ monolayer (UML) as the green shaded area (for further information, see the Methods section and Supplementary note

and figure S6). Without the Au(111) substrate, we would expect peaks to occur at the Fermi energy and more significantly below the Fermi energy, where the experimental data do not show any states. A gap appears in between 0.2 eV and 1.4 eV, which is absent in the measurement of Fig. 2 (a). When adding Au underneath of CrCl₃, the VacDOS changes drastically, shifting the band gap to the Fermi level and below (black curve). Note that due to the computational effort within the DFT calculation, we adapt a perfect registry between CrCl₃ and Au(111). Nevertheless, the calculated VacDOS (Figure 2.b - dark curve) exhibits qualitatively the same trends as in the measurement (cf. panel (a) and (b)): the band gap and the shoulder/peak structures at 0.2 eV and 1.7 eV. We attribute the differences between the calculations and the measurements to the differing structures within the calculations. From this comparison, we deduce that Au has an influence on the electronic structure of CrCl₃ and that this system is not solely driven by Van-der Waals forces. This is in accordance with reference [48], where the authors compared the binding energies and concluded that for CrCl₃/Au(111) these energies lie at the threshold of VdW and ionic bonds.

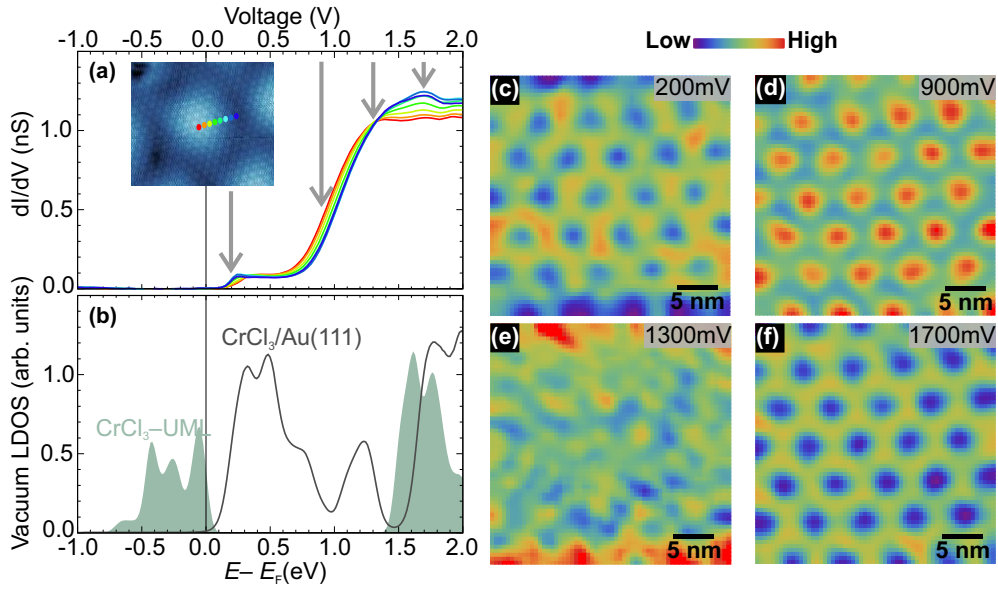


Fig. 2 Role of Au(111) on the electronic structure. Comparison between experimentally measured spectroscopy data and calculated vacuum density of states of CrCl₃/Au(111). (a) Scanning tunneling spectroscopy measurements on different positions of the moiré pattern as indicated in the inset. (c), (d), (e) and (f) dI/dV mapping of the moiré pattern taken at 4 different energies. (setpoint: $U_0 = 2$ V, $I_t = 400$ pA, these data were recorded using a lock in, a modulation of 20mV rms was added to the bias voltage, the full spectroscopic map was recorded from 2 V to -1 V) (b) Density functional theory calculations of the vacuum density of states 3 Å above the surface of a CrCl₃ unsupported monolayer (UML, green area) in comparison with CrCl₃/Au(111) (black line). Note that in the calculations, it is assumed that CrCl₃ is in perfect registry with Au(111), that is the moiré is not taken into account.

2.3 Higher order edge dislocations of the moiré pattern

Very peculiar defects have been observed in this moiré pattern. They consist in higher order edge dislocations. One of those particular defect is shown in Figure 3.a. On the left side of the dislocation, as indicated by the green arrows, three rows of the moiré pattern merge into a single row on the right side, resulting in the disappearance of a pair of rows. Notably, we have observed dislocations with similar characteristics in multiple locations of the sample. For each dislocation, a pair of rows vanishes, which represents an inherent characteristic of this particular moiré pattern.

To further characterize the dislocation, we analyze its Burgers vector (Figure 3.b) and coordination (Figure 3.c). The Burgers vector of the dislocation is found to be twice the lattice vector of the moiré pattern: $\mathbf{b}_{\text{moiré}} = -2\mathbf{a}_{\text{moiré}}^1$. The coordination of the lattice cells surrounding the dislocation is determined to be 5-5-8, i.e. two cells are five fold coordinated while one is height fold, this is in contrast with ordinary 5-7 dislocations. To gain insight into the atomic structure surrounding the dislocation, we provide a magnified view around the dislocation in the STM topography (Figure 3.d). By Fourier filtering the Bragg spots, the atomic lattice of CrCl_3 surrounding the dislocation becomes visible. Remarkably, at the exact position of the dislocation in the moiré pattern, we also observe an edge dislocation in the atomic lattice of CrCl_3 . Specifically, one row of atoms on the left side of the dislocation transforms into two rows on the right side, as indicated by the green arrows. Prior studies in the literature has suggested that a dislocation or defect within a moiré pattern faithfully replicates the corresponding dislocation or defect at the atomic level [42–44, 49]. However, in this case, the dislocation at the atomic level is characterized by a Burgers vector $\mathbf{b}_{\text{CrCl}_3} = \mathbf{a}_{\text{CrCl}_3}^1$ (as shown by the red arrow in Figure 3.d) and a 5-7 defect. This is in contrast, with the dislocation in the moiré pattern where the Burgers vector is opposite to the one in the atomic lattice and 2 times larger than the moiré lattice vector.

To understand the particularity of this dislocation in the moiré pattern, we modelize our system by introducing a 5-7 defect in the atomic lattice of CrCl_3 and convolute it with a defect-free atomic lattice of $\text{Au}(111)$. Figure 3.e illustrates the result of this simulation, which successfully reproduces the experimental observations of a dislocation with a Burgers vector $\mathbf{b}_{\text{moiré}} = -2\mathbf{a}_{\text{moiré}}^1$.

2.4 Analytical description

To understand the physical origin of the observed moiré and its peculiar dislocations, we conducted an analytical description of the moiré pattern. A conventional approach to describe a moiré pattern involves employing a continuous model [21]. The moiré may be described as the product between two lattice functions, denoted as $f_1(x, y)$ and $f_2(x, y)$ which are the superposition of plane waves on top of a constant background with an associated spatial frequency Q_1 and Q_2 respectively. To illustrate this with the simplest case, we consider the scenario of waves in each lattice propagating along the x-direction. The product between two lattice functions $f_1(x, y) \times f_2(x, y) = (1 + a \cos(Q_1x)) \times (1 + a \cos(Q_2x))$ can be rewritten as:

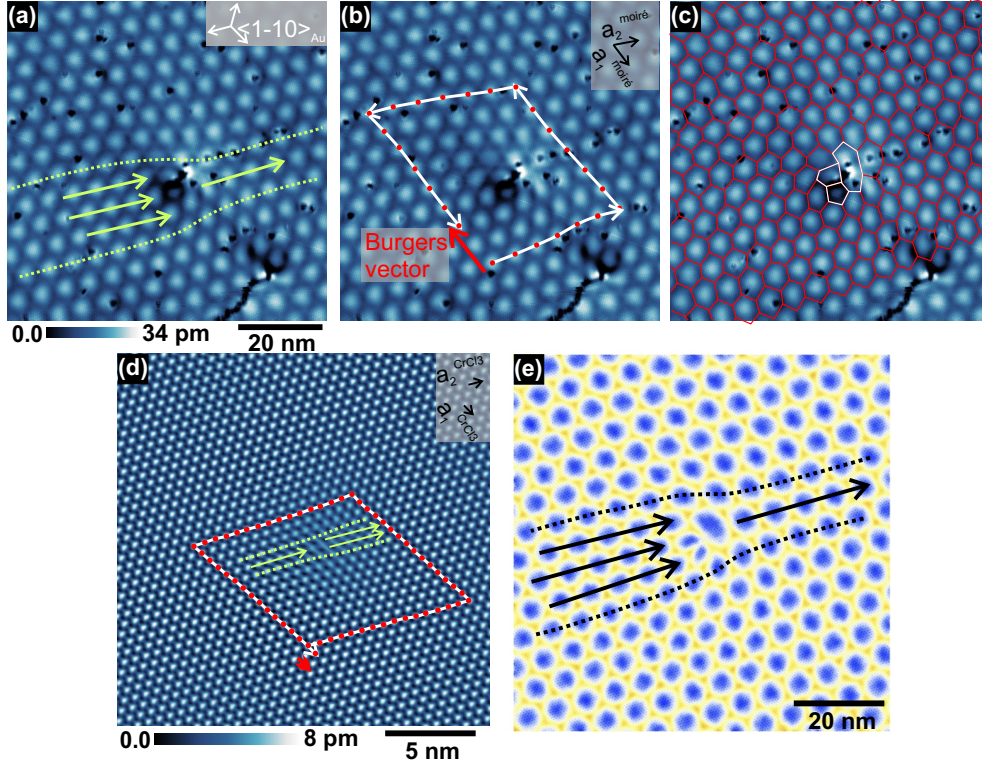


Fig. 3 Higher order edge dislocations. (a) STM topography showing a double dislocation in the moiré pattern. The dashed green lines and arrows are guide for the eyes to follow the dislocation. ($U_0 = 2$ V, $I_t = 200$ pA) (b) Drawing of the Burgers circuit around the dislocation, and its coordination (c). (d) Zoom around the dislocation in the moiré pattern. The STM topography was Fourier filtered to reveal the atomic lattice. It shows a simple dislocation in the atomic lattice of CrCl_3 at the exact position of the dislocation in the moiré pattern. (e) Numerical simulation of the dislocation in the moiré pattern.

$$f_1 \times f_2 = 1 + \frac{a^2}{2} (\cos[(Q_1 + Q_2)x] + \cos[(Q_1 - Q_2)x]) + 2a \cos\left[\frac{(Q_1 + Q_2)}{2}x\right] \cos\left[\frac{(Q_1 - Q_2)}{2}x\right] \quad (1)$$

We obtain the addition of 3 terms: a constant background, and 2 periodic function. In the following, to describe the moiré we will consider the first periodic function. It is a sum of two cosines with one slowly varying term $\cos[(Q_1 - Q_2)x]$ that stems for the moiré term. The resulting spatial beating frequency, $Q_1 - Q_2$ corresponds to the spatial frequency of the moiré, Q_{moire} . For the case of a moiré formed between two hexagonal lattices as for $\text{CrCl}_3/\text{Au}(111)$, each lattice needs to be treated as the superposition of two waves propagating in directions at 120° one from the other. This renders the mathematical description in the real space heavy. A simpler way to describe a moiré is to treat the problem in the reciprocal space where the moiré wave vector is expressed

as the difference between the wave vectors of each atomic lattice. We employed the intelligible model described by Zeller et al. and Le Ster et al. [21, 50]. Within this framework, not only the 1st order, but also the higher order Fourier component of the moiré need to be considered.

The general reciprocal vectors for both the Au and CrCl₃ atomic lattices, $Q_{Au}^{i,j}$ and $Q_{CrCl_3}^{k,l}$ are expressed as linear combinations of the primitive reciprocal lattice vectors, namely $Q_{Au}^{1,0}$, $Q_{Au}^{0,1}$, $Q_{CrCl_3}^{1,0}$, $Q_{CrCl_3}^{0,1}$:

$$Q_{Au}^{i,j} = iQ_{Au}^{1,0} + jQ_{Au}^{0,1} \quad (2)$$

$$Q_{CrCl_3}^{k,l} = kQ_{CrCl_3}^{1,0} + lQ_{CrCl_3}^{0,1}. \quad (3)$$

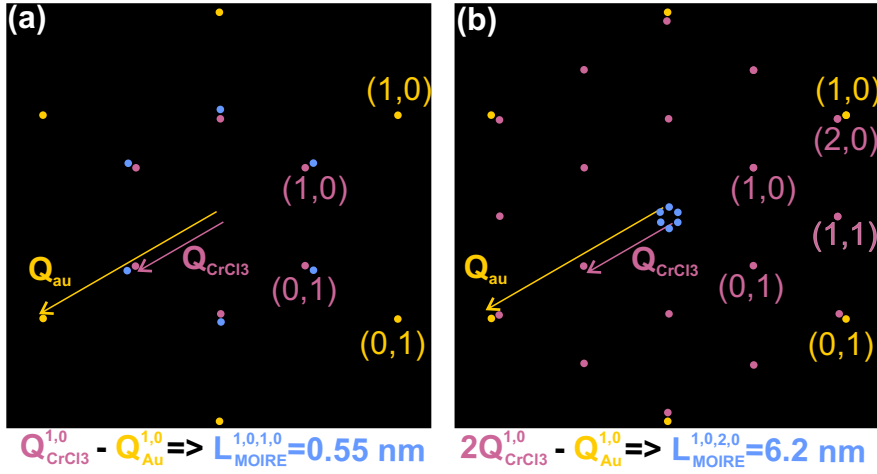


Fig. 4 Reciprocal lattice of CrCl₃/Au(111). The blue dots corresponds to the 1st (a) and 2nd (b) order moiré spots.

Here, $|Q_{Au}^{1,0}| = |Q_{Au}^{0,1}| = 2\pi/a_{Au}$ and $|Q_{CrCl_3}^{1,0}| = |Q_{CrCl_3}^{0,1}| = 2\pi/a_{CrCl_3}$, where $a_{Au} = 0.288 \text{ nm}$ and $a_{CrCl_3} = 0.604 \text{ nm}$ corresponds to the lattice parameters of Au and CrCl₃, respectively. The possible Fourier components of the moiré pattern's reciprocal vectors are expressed as the difference between the corresponding reciprocal vectors of Au and CrCl₃, leading to:

$$Q_{moiré}^{i,j,k,l} = Q_{Au}^{i,j} - Q_{CrCl_3}^{k,l}. \quad (4)$$

When the dense atomic directions of CrCl₃ align with the $\langle 1\bar{1}0 \rangle_{Au}$ directions, $Q_{Au}^{1,0}$ is colinear with $Q_{CrCl_3}^{1,0}$, as depicted in Figure 4.a. Let us illustrate why one should here consider higher order moiré by first showing that a usual first order moiré is doesn't

correspond to our observation. The first order moiré wave vector formed between the (1,0) Bragg spots of Au and CrCl₃ is expressed as:

$$\mathbf{Q}_{\text{moiré}}^{1,0,1,0} = \mathbf{Q}_{\text{Au}}^{1,0} - \mathbf{Q}_{\text{CrCl}_3}^{1,0} \quad (5)$$

This results in a moiré period in real space:

$$L_{\text{moiré}}^{1,0,1,0} = 2\pi/|\mathbf{Q}_{\text{moiré}}^{1,0,1,0}| = 0.55 \text{ nm}. \quad (6)$$

This period is notably smaller than 0.604 nm, the lattice parameter of CrCl₃. As a result, a moiré pattern between the (1,0) Bragg spots of Au and CrCl₃ is meaningless. This emanates from the fact that a_{CrCl_3} exceeds the lattice parameter of Au by more than a factor two. Noteworthy, CrCl₃/Au(111) is the paragon case where higher order moiré is popping up. Extending the reciprocal lattice of CrCl₃ to the second order (as depicted in Figure 4.b) reveals that the shortest moiré wave vector is formed between the (1,0) Bragg spot of Au and the (2,0) Bragg spot of CrCl₃, expressed as:

$$\mathbf{Q}_{\text{moiré}}^{1,0,2,0} = \mathbf{Q}_{\text{Au}}^{1,0} - \mathbf{Q}_{\text{CrCl}_3}^{2,0}. \quad (7)$$

In the real space, this yields a moiré pattern period:

$$L_{\text{moiré}}^{1,0,2,0} = 2\pi/|\mathbf{Q}_{\text{moiré}}^{1,0,2,0}| = 6.2 \text{ nm}, \quad (8)$$

which corresponds exactly to the period we measure in our experiments.

We will now explain the emergence of the peculiar dislocations (Figure 3). As a dislocation is a punctual defect that cannot be modeled easily in reciprocal space, the problem needs to be partially treated in real space. In order to avoid a heavy mathematical description and maintain conceptual clarity, we will consider only a dislocation in a simple planar wave that can be modeled by the expression $\cos[(Q_1x + \Delta\varphi(x, y))]$, with $\Delta\varphi(x, y)$ being a Berry phase associated to the defect. If one considers a dislocation located at the origin, $\Delta\varphi(x, y)$ can just be taken as the angle of the position vector $\mathbf{r} = (x, y)$ to the abscissa, i.e. $\Delta\varphi(x, y) = \arg(x + iy)$. The resulting dislocation pattern is shown in Figure 5.a.

Consider now two lattices forming a first order moiré, with a dislocation in one of the lattices. It naturally results in a dislocation in the moiré pattern, as shown in Figure 5.b. This can easily be explained using eq.1. The moiré term is $\cos[(Q_1 - Q_2)x + \Delta\varphi(x, y)]$ which also exhibits a Berry phase that naturally gives a dislocation in the moiré pattern. The question that immediately arises is what about our higher order moiré? The second order moiré is a beating between $\cos(2Q_1x)$ and $\cos(Q_2x)$, however, in the presence of a dislocation the phase Q_1x has to be replaced by $(Q_1x + \Delta\varphi(x, y))$. This results in a beating between $\cos[2(Q_1x + \Delta\varphi(x, y))]$ and $\cos(Q_2x)$ that leads to a moiré term $\cos[(2Q_1 - Q_2)x + 2\Delta\varphi(x, y)]$. As we can see, the resulting Berry phase is now $2\Delta\varphi(x, y)$, the double of the Berry phase in the primary defect. Figure 5.c,d shows the resulting dislocation patterns in the second order lattice and its moiré pattern.

In Figure 5 one can see that the additional rows in the moiré pattern and the primary lattice are on the same side (bottom part of the images). This is at odds with what we observe in our experiments as shown in Figure 3.a,d. There, the additional rows in the atomic and moiré lattices are located at the opposite sides of the

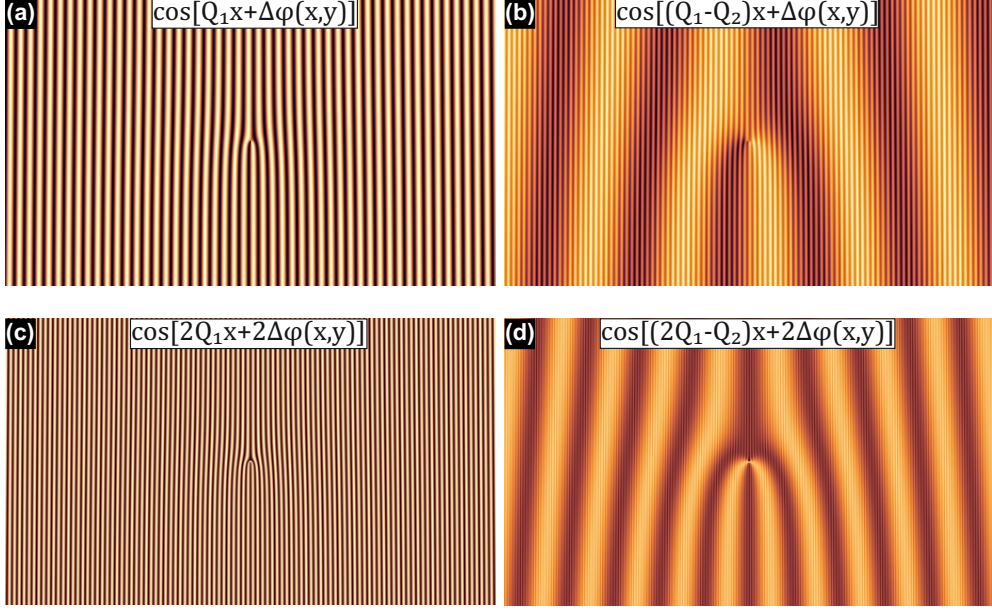


Fig. 5 Analytical description of the dislocation in the moiré pattern. (a) First order periodic lattice simulated by a simple plane wave in which a dislocation has been introduced in the form of phase difference which correspond to a Berry phase: $\Delta\varphi(x, y)$. (b) First order moiré pattern when a simple dislocation exists in one of the two periodic lattices: a simple dislocation appears in the moiré. The dislocation in the moiré pattern exhibits the same Berry phase as in the primary lattice. (c) Second order primary lattice: the Berry phase of the dislocation is doubled ($2\Delta\varphi(x, y)$) with respect to the first order shown in (a). (d) The resulting second order moiré pattern shows an additional double row with a Berry phase ($2\Delta\varphi(x, y)$).

dislocation. This peculiarity is explained in Figure 6. Let us first assume that the additional row in the primary lattice is located at the bottom of the image as shown in Figure 5.a,c. To first order, it corresponds to a term $\cos(Q_1x + \Delta\varphi(x, y))$. Then, the second order moiré pattern is given by the expression $\cos((2Q_1 - Q_2)x + 2\Delta\varphi(x, y))$. In Figure 6 we show that depending on the sign of $(2Q_1 - Q_2)$, the dislocation in the moiré pattern can appear either on the same side of the dislocation in the primary lattice ($2Q_1 - Q_2 > 0$, Figure 6.a), either in the opposite side ($2Q_1 - Q_2 < 0$, Figure 6.b). To demonstrate this, let us consider the phase term $(2Q_1 - Q_2)x + 2\Delta\varphi(x, y)$ over a circuit surrounding the dislocation (see Figure 6.a,b). In the case where $2Q_1 > Q_2$ (Figure 6.a), along the blue arc, from A to B, the optical path difference $\Delta\theta$ is the sum of two positive contributions $\Delta\theta_1 = (2Q_1 - Q_2)\Delta x + 2\pi$, while for the green arc, from B to A, the optical path difference is the sum of a negative term and a positive one $\Delta\theta_2 = -(2Q_1 - Q_2)\Delta x + 2\pi$. Hence, $|\Delta\theta_1| - |\Delta\theta_2| = 4\pi$, which means that the blue arc encompass two additional fringes as compared to the green arc. Now, in the case where $2Q_1 < Q_2$ (Figure 6.b), the situation is just reversed. On the blue circuit the two phase shifts are opposite while on the green arc they add, this lead to the appearance of two additional rows in the top part of Figure 6.b, while the in the primary

lattice the dislocation is still located at the bottom (Figure 5). The situation depicted in Figure 5.b is in perfect agreement with what we observe in Figure 5.a, d and is consistent with the fact that $2Q_{\text{CrCl}_3} < Q_{\text{Au}}$. The double dislocation in $\text{CrCl}_3/\text{Au}(111)$ is carrying a Berry phase of -4π , which correspond to a Chern winding number of 2, which is equivalent to a double vortex.

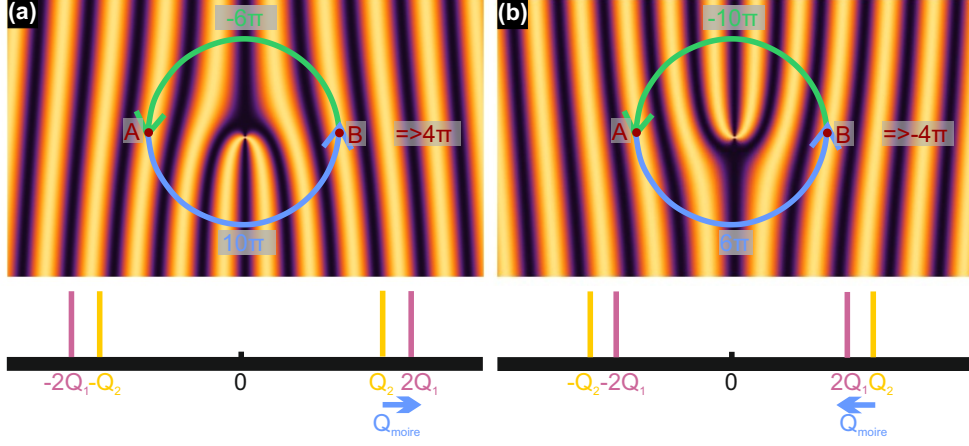


Fig. 6 Dislocation's Berry phase. Dislocation in the 2nd order moiré when $2Q_1 > Q_2$ (a) and $2Q_1 < Q_2$ (b)

3 Conclusion & Outlook

We have observed a higher order moiré pattern in a monolayer of CrCl_3 on a $\text{Au}(111)$ surface that is driven by a large lattice mismatch: two periods of $\text{Au}(111)$ matching almost one period of CrCl_3 . The moiré is revealed in STM topography images but it originates mainly from an electronic structure modulation due to a strong coupling to the substrate which is not expected in such a van der Waals material. This interaction with the substrate was ascertained by DFT calculations that reveal a substantial shift of the chemical potential in CrCl_3 as compared to a free standing monolayer. The in situ grown samples exhibit single edge dislocations in the CrCl_3 monolayer that manifest as a double dislocations in the moiré pattern. This doubling effect is a direct consequence of the second order moiré. The dislocations in the moiré pattern are structural topological defects which can be described, in the continuous limit, as double vortices carrying Berry phases of 4π . Our model can be used with many different systems and may serve to identify interesting ones that might host topological defects with a well controlled Chern number.

Due to the substantial coupling to a substrate with a strong Rashba spin-orbit coupling, this system could be an interesting platform for the stabilization of exotic non-collinear magnetic textures induced by the periodic potential of the moiré. The

dislocations/vortices observed in the moiré pattern could be potentially interesting to pin topological spin textures that may host non conventional excitations such as non abelian anyons. It has been recently proposed in $\text{CrBr}_3/\text{NbSe}_2$, that the moiré was responsible of the appearance of topological superconductivity in NbSe_2 [6]. We may therefore expect that the topological defects in the moiré pattern of CrBr_3 could stabilize Majorana bound states.

4 Method

4.1 Experimental Section

The experiments were performed under ultra high vacuum. The Au(111) single crystal was cleaned by cycles of argon-ion sputtering and annealing to 450°C . Starting from an anhydrous powder CrCl_3 was carefully degazed before being evaporated using a Knudsen cell on the clean Au(111) substrate at room temperature. To obtain flat CrCl_3 islands, the sample was post annealed to about 150°C for few minutes. STM experiments were realized in a home built low temperature STM and on a LT omicron commercial STM. Experiments were performed at 4K.

4.2 Density functional theory calculations

The vacuum LDOS calculations in Figure 2.b have been done using the FLAPW method implemented in the code FLEUR [51]. Shown are the two VacDOS calculations of a unsupported CrCl_3 monolayer (UML) and the CrCl_3 monolayer on top of a Au(111) surface. The presented VacDOS is calculated approximately 3 \AA above the surface. Since the unit cell of the moiré pattern with its substrate is too large for being feasible in first principles calculations, the atomic positions of both Cr and Cl atoms are placed in a perfect hexagonal structure where, a lattice constant in between Au bulk and CrCl_3 has been applied (tests have shown negligible dependence of the VacDOS vs. small variations of the lattice parameter, distances and atomic positions of the van der Waals material). The lattice parameters and distances used are presented in Tab. 1

Table 1 Lattice parameters in \AA used for vacuum LDOS in Figure 2.b. $a_{\text{in-plane}}$ denotes the in-plane lattice constant of the hexagonal lattice, $\Delta d_{\text{Cl-Cr}}$ is the vertical distance between the Cl layers and the Cr layer, $\Delta d_{\text{CrCl}_3\text{-Au(111)}}$ denotes the vertical distance between CrCl_3 and the Au(111) surface.

System	$a_{\text{in-plane}}$ (\AA)	$\Delta d_{\text{Cl-Cr}}$ (\AA)	$\Delta d_{\text{CrCl}_3\text{-Au(111)}}$ (\AA)
CrCl_3 UML	5.909	1.289	–
$\text{CrCl}_3/\text{Au(111)}$	5.909	1.336	4.233

Supplementary information. The online version contains supplementary material available at

Acknowledgements. We Acknowledged Johann Coraux for his thoughtful reading of the paper.

Declarations

- Funding: This work was supported by the French Agence Nationale de la Recherche through the contract ANR GINET2-0 (ANR-20-CE42-0011). Computing time was provided by the Consortium d'Équipements de Calcul Intensif (FRS-FNRS Belgium GA 2.5020.11) and the LUMI CECI/Belgium for awarding this project access to the LUMI supercomputer, owned by the EuroHPC Joint Undertaking, hosted by CSC (Finland) and the LUMI consortium through LUMI CECI/Belgium, ULiege-NANOMAT-SKYRM-1. Sebastian Meyer is a Postdoctoral Researcher [CR] of the Fonds de la Recherche Scientifique – FNRS. Bertrand Dupé is a Research Associate [CQ] of the Fonds de la Recherche Scientifique – FNRS.
- Conflict of interest/Competing interests: Not applicable
- Ethics approval and consent to participate: Not applicable
- Consent for publication: Not applicable
- Data availability: Not applicable
- Materials availability: Not applicable
- Code availability: Not applicable
- Author contribution: M.H. and T.C proposed and conceived the research, E.G., S.G., M.H., T.C, L.L., C.B. and F.S. performed the experiments with the technical assistance of P.D. and F.D., E.G., S.G. and M.H analyzed the data, E.G., T.C and M.H. performed the numerical simulation and derived the analytical model. S.M. and B.D. performed the DFT calculations. M.H., T.C and S.M. wrote the original manuscript. All the authors discussed the results.

References

- [1] Geim, A.K., Grigorieva, I.V.: Van der Waals heterostructures. *Nature* **499**(7459), 419–425 (2013) <https://doi.org/10.1038/nature12385> . Number: 7459 Publisher: Nature Publishing Group. Accessed 2024-01-14
- [2] Novoselov, K.S., Mishchenko, A., Carvalho, A., Castro Neto, A.H.: 2D materials and van der Waals heterostructures. *Science* **353**(6298), 9439 (2016) <https://doi.org/10.1126/science.aac9439> . Publisher: American Association for the Advancement of Science. Accessed 2024-01-14
- [3] Wang, Q.H., Bedoya-Pinto, A., Blei, M., Dismukes, A.H., Hamo, A., Jenkins, S., Koperski, M., Liu, Y., Sun, Q.-C., Telford, E.J., Kim, H.H., Augustin, M., Vool, U., Yin, J.-X., Li, L.H., Falin, A., Dean, C.R., Casanova, F., Evans, R.F.L., Chshiev, M., Mishchenko, A., Petrovic, C., He, R., Zhao, L., Tsen, A.W., Gerardot, B.D., Brotons-Gisbert, M., Guguchia, Z., Roy, X., Tongay, S., Wang, Z., Hasan, M.Z., Wrachtrup, J., Yacoby, A., Fert, A., Parkin, S., Novoselov, K.S., Dai, P., Balicas, L., Santos, E.J.G.: The Magnetic Genome of Two-Dimensional van der Waals Materials. *ACS Nano* **16**(5), 6960–7079 (2022) <https://doi.org/10.1021/acsnano.1c09150> . Publisher: American Chemical Society. Accessed 2024-01-14
- [4] Han, W., Kawakami, R.K., Gmitra, M., Fabian, J.: Graphene spintronics. *Nature*

- Nanotechnology **9**(10), 794–807 (2014) <https://doi.org/10.1038/nnano.2014.214> . Number: 10 Publisher: Nature Publishing Group. Accessed 2024-01-14
- [5] Kezilebieke, S., Huda, M.N., Vaño, V., Aapro, M., Ganguli, S.C., Silveira, O.J., Głodzik, S., Foster, A.S., Ojanen, T., Liljeroth, P.: Topological superconductivity in a van der Waals heterostructure. *Nature* **588**(7838), 424–428 (2020) <https://doi.org/10.1038/s41586-020-2989-y> . Number: 7838 Publisher: Nature Publishing Group. Accessed 2024-01-14
- [6] Kezilebieke, S., Vaño, V., Huda, M.N., Aapro, M., Ganguli, S.C., Liljeroth, P., Lado, J.L.: Moiré-Enabled Topological Superconductivity. *Nano Letters* **22**(1), 328–333 (2022) <https://doi.org/10.1021/acs.nanolett.1c03856> . Publisher: American Chemical Society. Accessed 2024-01-14
- [7] Martinez-Castro, J., Wichmann, T., Jin, K., Samuely, T., Lyu, Z., Yan, J., Onufrienko, O., Szabó, P., Tautz, F.S., Ternes, M., Lüpke, F.: One-dimensional topological superconductivity in a van der Waals heterostructure. *arXiv*. arXiv:2304.08142 [cond-mat] (2023). <http://arxiv.org/abs/2304.08142> Accessed 2024-01-14
- [8] Basov, D.N., Fogler, M.M., Abajo, F.J.: Polaritons in van der Waals materials. *Science* **354**(6309), 1992 (2016) <https://doi.org/10.1126/science.aag1992> . Publisher: American Association for the Advancement of Science. Accessed 2024-01-14
- [9] Zhang, Q., Hu, G., Ma, W., Li, P., Krasnok, A., Hillenbrand, R., Alù, A., Qiu, C.-W.: Interface nano-optics with van der Waals polaritons. *Nature* **597**, 187–195 (2021) <https://doi.org/10.1038/s41586-021-03581-5>
- [10] Huang, B., Clark, G., Navarro-Moratalla, E., Klein, D.R., Cheng, R., Seyler, K.L., Zhong, D., Schmidgall, E., McGuire, M.A., Cobden, D.H., Yao, W., Xiao, D., Jarillo-Herrero, P., Xu, X.: Layer-dependent ferromagnetism in a van der Waals crystal down to the monolayer limit. *Nature* **546**(7657), 270–273 (2017) <https://doi.org/10.1038/nature22391> . Number: 7657 Publisher: Nature Publishing Group. Accessed 2024-01-14
- [11] Chen, W., Sun, Z., Wang, Z., Gu, L., Xu, X., Wu, S., Gao, C.: Direct observation of van der Waals stacking-dependent interlayer magnetism. *Science* **366**(6468), 983–987 (2019) <https://doi.org/10.1126/science.aav1937> . Publisher: American Association for the Advancement of Science. Accessed 2024-01-14
- [12] Kim, M., Kumaravadivel, P., Birkbeck, J., Kuang, W., Xu, S.G., Hopkinson, D.G., Knolle, J., McClarty, P.A., Berdyugin, A.I., Ben Shalom, M., Gorbachev, R.V., Haigh, S.J., Liu, S., Edgar, J.H., Novoselov, K.S., Grigorieva, I.V., Geim, A.K.: Micromagnetometry of two-dimensional ferromagnets. *Nature Electronics* **2**(10), 457–463 (2019) <https://doi.org/10.1038/s41928-019-0302-6> . Number: 10 Publisher: Nature Publishing Group. Accessed 2024-01-14

- [13] Soriano, D., Katsnelson, M.I., Fernández-Rossier, J.: Magnetic Two-Dimensional Chromium Trihalides: A Theoretical Perspective. *Nano Letters* **20**(9), 6225–6234 (2020) <https://doi.org/10.1021/acs.nanolett.0c02381> . Publisher: American Chemical Society. Accessed 2024-01-14
- [14] Bedoya-Pinto, A., Ji, J.-R., Pandeya, A.K., Gargiani, P., Valvidares, M., Sessi, P., Taylor, J.M., Radu, F., Chang, K., Parkin, S.S.P.: Intrinsic 2D-XY ferromagnetism in a van der Waals monolayer. *Science* **374**(6567), 616–620 (2021) <https://doi.org/10.1126/science.abd5146> . Publisher: American Association for the Advancement of Science. Accessed 2024-01-14
- [15] Kitaev, A.: Anyons in an exactly solved model and beyond. *Annals of Physics* **321**(1), 2–111 (2006) <https://doi.org/10.1016/j.aop.2005.10.005> . Accessed 2024-02-27
- [16] Ganguli, S.C., Aapro, M., Kezilebieke, S., Amini, M., Lado, J.L., Liljeroth, P.: Visualization of Moiré Magnons in Monolayer Ferromagnet. *Nano Letters* **23**(8), 3412–3417 (2023) <https://doi.org/10.1021/acs.nanolett.3c00417> . Publisher: American Chemical Society. Accessed 2024-01-14
- [17] Li, P., Wang, C., Zhang, J., Chen, S., Guo, D., Ji, W., Zhong, D.: Single-layer CrI₃ grown by molecular beam epitaxy. *Science Bulletin* **65**(13), 1064–1071 (2020) <https://doi.org/10.1016/j.scib.2020.03.031> . Accessed 2024-01-14
- [18] Xie, H., Luo, X., Ye, Z., Sun, Z., Ye, G., Sung, S.H., Ge, H., Yan, S., Fu, Y., Tian, S., Lei, H., Sun, K., Hovden, R., He, R., Zhao, L.: Evidence of non-collinear spin texture in magnetic moiré superlattices. *Nature Physics* **19**(8), 1150–1155 (2023) <https://doi.org/10.1038/s41567-023-02061-z> . Number: 8 Publisher: Nature Publishing Group. Accessed 2024-01-14
- [19] Qiu, Z., Holwill, M., Olsen, T., Lyu, P., Li, J., Fang, H., Yang, H., Kashchenko, M., Novoselov, K.S., Lu, J.: Visualizing atomic structure and magnetism of 2D magnetic insulators via tunneling through graphene. *Nature Communications* **12**(1), 70 (2021) <https://doi.org/10.1038/s41467-020-20376-w> . Number: 1 Publisher: Nature Publishing Group. Accessed 2024-01-14
- [20] Cheng, G., Rahman, M.M., Allcca, A.L., Rustagi, A., Liu, X., Liu, L., Fu, L., Zhu, Y., Mao, Z., Watanabe, K., Taniguchi, T., Upadhyaya, P., Chen, Y.P.: Electrically tunable moiré magnetism in twisted double bilayers of chromium triiodide. *Nature Electronics* **6**(6), 434–442 (2023) <https://doi.org/10.1038/s41928-023-00978-0> . Number: 6 Publisher: Nature Publishing Group. Accessed 2024-01-14
- [21] Zeller, P., Günther, S.: What are the possible moiré patterns of graphene on hexagonally packed surfaces? Universal solution for hexagonal coincidence lattices, derived by a geometric construction. *New Journal of Physics* **16**(8), 083028 (2014) <https://doi.org/10.1088/1367-2630/16/8/083028> . Publisher: IOP Publishing. Accessed 2024-01-14

- [22] Loginova, E., Nie, S., Thürmer, K., Bartelt, N.C., McCarty, K.F.: Defects of graphene on Ir(111): Rotational domains and ridges. *Physical Review B* **80**(8), 085430 (2009) <https://doi.org/10.1103/PhysRevB.80.085430> . Publisher: American Physical Society. Accessed 2024-01-14
- [23] Zeller, P., Dänhardt, S., Gsell, S., Schreck, M., Wintterlin, J.: Scalable synthesis of graphene on single crystal Ir(111) films. *Surface Science* **606**(19), 1475–1480 (2012) <https://doi.org/10.1016/j.susc.2012.05.014> . Accessed 2024-01-14
- [24] Blanc, N., Coraux, J., Vo-Van, C., N'Diaye, A.T., Geaymond, O., Renaud, G.: Local deformations and incommensurability of high-quality epitaxial graphene on a weakly interacting transition metal. *Physical Review B* **86**(23), 235439 (2012) <https://doi.org/10.1103/PhysRevB.86.235439> . Accessed 2024-01-14
- [25] N'Diaye, A.T., Coraux, J., Plasa, T.N., Busse, C., Michely, T.: Structure of epitaxial graphene on Ir(111). *New Journal of Physics* **10**(4), 043033 (2008) <https://doi.org/10.1088/1367-2630/10/4/043033> . Accessed 2024-01-14
- [26] Merino, P., Švec, M., Pinardi, A.L., Otero, G., Martín-Gago, J.A.: Strain-Driven Moiré Superstructures of Epitaxial Graphene on Transition Metal Surfaces. *ACS Nano* **5**(7), 5627–5634 (2011) <https://doi.org/10.1021/nm201200j> . Publisher: American Chemical Society. Accessed 2024-01-14
- [27] Artaud, A., Magaud, L., Le Quang, T., Guisset, V., David, P., Chapelier, C., Coraux, J.: Universal classification of twisted, strained and sheared graphene moiré superlattices. *Scientific Reports* **6**(1), 25670 (2016) <https://doi.org/10.1038/srep25670> . Number: 1 Publisher: Nature Publishing Group. Accessed 2024-02-21
- [28] Tsubokawa, I.: On the Magnetic Properties of a CrBr₃ Single Crystal. *Journal of the Physical Society of Japan* **15**(9), 1664–1668 (1960) <https://doi.org/10.1143/JPSJ.15.1664> . Publisher: The Physical Society of Japan. Accessed 2024-01-14
- [29] Starr, C., Bitter, F., Kaufmann, A.R.: The Magnetic Properties of the Iron Group Anhydrous Chlorides at Low Temperatures. I. Experimental. *Physical Review* **58**(11), 977–983 (1940) <https://doi.org/10.1103/PhysRev.58.977> . Publisher: American Physical Society. Accessed 2024-01-14
- [30] Akram, M., LaBollita, H., Dey, D., Kapeghian, J., Erten, O., Botana, A.S.: Moiré Skyrmions and Chiral Magnetic Phases in Twisted CrX₃ (X = I, Br, and Cl) Bilayers. *Nano Letters* **21**(15), 6633–6639 (2021) <https://doi.org/10.1021/acs.nanolett.1c02096> . Publisher: American Chemical Society. Accessed 2024-01-14
- [31] Ghader, D., Jabakhanji, B., Stroppa, A.: Whirling interlayer fields as a source of stable topological order in moiré CrI₃. *Communications Physics* **5**(1), 1–12 (2022) <https://doi.org/10.1038/s42005-022-00972-6> . Number: 1 Publisher: Nature Publishing Group. Accessed 2024-01-14

- [32] Fumega, A.O., Lado, J.L.: Moiré-driven multiferroic order in twisted CrCl₃, CrBr₃ and CrI₃ bilayers. *2D Materials* **10**(2), 025026 (2023) <https://doi.org/10.1088/2053-1583/acc671> . Publisher: IOP Publishing. Accessed 2024-01-14
- [33] Nakosai, S., Tanaka, Y., Nagaosa, N.: Two-dimensional p -wave superconducting states with magnetic moments on a conventional s -wave superconductor. *Physical Review B* **88**(18), 180503 (2013) <https://doi.org/10.1103/PhysRevB.88.180503> . Publisher: American Physical Society. Accessed 2024-01-14
- [34] Chen, W., Schnyder, A.P.: Majorana edge states in superconductor-noncollinear magnet interfaces. *Physical Review B* **92**(21), 214502 (2015) <https://doi.org/10.1103/PhysRevB.92.214502> . Publisher: American Physical Society. Accessed 2024-01-14
- [35] Yang, G., Stano, P., Klinovaja, J., Loss, D.: Majorana bound states in magnetic skyrmions. *Physical Review B* **93**(22), 224505 (2016) <https://doi.org/10.1103/PhysRevB.93.224505> . Publisher: American Physical Society. Accessed 2024-01-14
- [36] Mohanta, N., Zhou, T., Xu, J.-W., Han, J.E., Kent, A.D., Shabani, J., Žutić, I., Matos-Abiague, A.: Electrical Control of Majorana Bound States Using Magnetic Stripes. *Physical Review Applied* **12**(3), 034048 (2019) <https://doi.org/10.1103/PhysRevApplied.12.034048> . Publisher: American Physical Society. Accessed 2024-01-14
- [37] Garnier, M., Mesaros, A., Simon, P.: Topological superconductivity with deformable magnetic skyrmions. *Communications Physics* **2**(1), 1–8 (2019) <https://doi.org/10.1038/s42005-019-0226-5> . Number: 1 Publisher: Nature Publishing Group. Accessed 2024-01-14
- [38] Ménard, G.C., Mesaros, A., Brun, C., Debontridder, F., Roditchev, D., Simon, P., Cren, T.: Isolated pairs of Majorana zero modes in a disordered superconducting lead monolayer. *Nature Communications* **10**(1), 2587 (2019) <https://doi.org/10.1038/s41467-019-10397-5> . Number: 1 Publisher: Nature Publishing Group. Accessed 2024-02-02
- [39] Nye, J.F., Berry, M.V.: Dislocations in Wave Trains. *Proceedings of the Royal Society of London. Series A, Mathematical and Physical Sciences* **336**(1605), 165–190 (1974). Publisher: The Royal Society. Accessed 2024-01-14
- [40] Dutreix, C., González-Herrero, H., Brihuega, I., Katsnelson, M.I., Chapelier, C., Renard, V.T.: Measuring the Berry phase of graphene from wavefront dislocations in Friedel oscillations. *Nature* **574**(7777), 219–222 (2019) <https://doi.org/10.1038/s41586-019-1613-5> . Number: 7777 Publisher: Nature Publishing Group. Accessed 2024-02-21
- [41] Coraux, J., N'Diaye, A.T., Busse, C., Michely, T.: Structural Coherency of

- Graphene on Ir(111). *Nano Letters* **8**(2), 565–570 (2008) <https://doi.org/10.1021/nl0728874> . Publisher: American Chemical Society. Accessed 2024-02-21
- [42] Lu, J., Gomes, L.C., Nunes, R.W., Castro Neto, A.H., Loh, K.P.: Lattice Relaxation at the Interface of Two-Dimensional Crystals: Graphene and Hexagonal Boron-Nitride. *Nano Letters* **14**(9), 5133–5139 (2014) <https://doi.org/10.1021/nl501900x> . Publisher: American Chemical Society. Accessed 2024-01-14
- [43] Pochet, P., McGuigan, B.C., Coraux, J., Johnson, H.T.: Toward Moiré engineering in 2D materials via dislocation theory. *Applied Materials Today* **9**, 240–250 (2017) <https://doi.org/10.1016/j.apmt.2017.07.007> . Accessed 2024-01-14
- [44] Jong, T.A., Benschop, T., Chen, X., Krasovskii, E.E., Dood, M.J.A., Tromp, R.M., Allan, M.P., Molen, S.J.: Imaging moiré deformation and dynamics in twisted bilayer graphene. *Nature Communications* **13**(1), 70 (2022) <https://doi.org/10.1038/s41467-021-27646-1> . Number: 1 Publisher: Nature Publishing Group. Accessed 2024-01-14
- [45] Bardeen, J.: Tunnelling from a many-particle point of view. *Phys. Rev. Lett.* **6**, 57–59 (1961) <https://doi.org/10.1103/PhysRevLett.6.57>
- [46] Tersoff, J., Hamann, D.R.: Theory of the scanning tunneling microscope. *Phys. Rev. B* **31**, 805–813 (1985) <https://doi.org/10.1103/PhysRevB.31.805>
- [47] Wortmann, D., Heinze, S., Kurz, P., Bihlmayer, G., Blügel, S.: Resolving complex atomic-scale spin structures by spin-polarized scanning tunneling microscopy. *Phys. Rev. Lett.* **86**, 4132–4135 (2001) <https://doi.org/10.1103/PhysRevLett.86.4132>
- [48] Zhang, F., Li, X., Wu, Y., Wang, X., Zhao, J., Gao, W.: Strong dzyaloshinskii-moriya interaction in monolayer CrI_3 on metal substrates. *Phys. Rev. B* **106**, 100407 (2022) <https://doi.org/10.1103/PhysRevB.106.L100407>
- [49] Yang, H., Zhang, T., Liu, M., Liu, L., Wu, X., Wang, Y.: Moiré Pattern Dislocation in Continuous Atomic Lattice of Monolayer h-BN. *ACS Applied Electronic Materials* **4**(2), 891–896 (2022) <https://doi.org/10.1021/acsaelm.2c00013> . Publisher: American Chemical Society. Accessed 2024-02-03
- [50] Ster, M.L., Märkl, T., Brown, S.A.: Moiré patterns: a simple analytical model. *2D Materials* **7**(1), 011005 (2019) <https://doi.org/10.1088/2053-1583/ab5470> . Publisher: IOP Publishing. Accessed 2024-02-02
- [51] www.flapw.de. www.flapw.de