



**HAL**  
open science

## Proteogenomic analysis of *Georgfuchsia toluolica* revealed unexpected concurrent aerobic and anaerobic toluene degradation

Siavash Atashgahi, Margreet J Oosterkamp, Peng Peng, Jeroen Frank, Beate Kraft, Bastian Hornung, David Schleheck, Sebastian Lücker, Mike S M Jetten, Alfons J M Stams, et al.

### ► To cite this version:

Siavash Atashgahi, Margreet J Oosterkamp, Peng Peng, Jeroen Frank, Beate Kraft, et al.. Proteogenomic analysis of *Georgfuchsia toluolica* revealed unexpected concurrent aerobic and anaerobic toluene degradation. *Environmental Microbiology Reports*, 2021, 13 (6), pp.841-851. 10.1111/1758-2229.12996 . hal-04543783

**HAL Id: hal-04543783**

**<https://hal.science/hal-04543783>**

Submitted on 12 Apr 2024

**HAL** is a multi-disciplinary open access archive for the deposit and dissemination of scientific research documents, whether they are published or not. The documents may come from teaching and research institutions in France or abroad, or from public or private research centers.

L'archive ouverte pluridisciplinaire **HAL**, est destinée au dépôt et à la diffusion de documents scientifiques de niveau recherche, publiés ou non, émanant des établissements d'enseignement et de recherche français ou étrangers, des laboratoires publics ou privés.



Distributed under a Creative Commons Attribution 4.0 International License

## Brief Report

# Proteogenomic analysis of *Georgfuchsia toluolica* revealed unexpected concurrent aerobic and anaerobic toluene degradation

Siavash Atashgahi, <sup>1,2,3†\*</sup> Margreet J. Oosterkamp,<sup>1,4†</sup>  
Peng Peng,<sup>1,5</sup> Jeroen Frank,<sup>2,3</sup> Beate Kraft,<sup>6</sup>  
Bastian Hornung,<sup>1,7</sup> David Schleheck, <sup>8</sup>  
Sebastian Lücker, <sup>2</sup> Mike S. M. Jetten,<sup>2,3</sup>  
Alfons J. M. Stams<sup>1,3,9</sup> and Hauke Smidt<sup>1</sup>

<sup>1</sup>Laboratory of Microbiology, Wageningen University & Research, Wageningen, 6708 WE, The Netherlands.

<sup>2</sup>Department of Microbiology, IWW, Radboud University, Heyendaalseweg 135, Nijmegen, 6525 AJ, The Netherlands.

<sup>3</sup>Soehngen Institute of Anaerobic Microbiology, Heyendaalseweg 135, Nijmegen, 6525 AJ, The Netherlands.

<sup>4</sup>Sub-department of Environmental Technology, Wageningen University & Research, Bornse weilanden 9, Wageningen, 6708 DW, The Netherlands.

<sup>5</sup>Department of Civil and Environmental Engineering, University of Michigan, 1351 Beal Avenue, Ann Arbor, MI, 48109-2125.

<sup>6</sup>Nordic Center for Earth Evolution, University of Southern Denmark, Odense, DK-5230, Denmark.

<sup>7</sup>Architecture et Fonction des Macromolécules Biologiques (AFMB), CNRS, 163 avenue de Luminy, 13288 Aix Marseille Université, Marseille, France.

<sup>8</sup>Department of Biology, University of Konstanz, Konstanz, 78457, Germany.

<sup>9</sup>Centre of Biological Engineering, University of Minho, Campus de Gualtar, Braga, 4710-057, Portugal.

## Abstract

**Denitrifying Betaproteobacteria play a key role in the anaerobic degradation of monoaromatic hydrocarbons. We performed a multi-omics study to better understand the metabolism of the representative organism *Georgfuchsia toluolica* strain G5G6 known as a strict anaerobe coupling toluene oxidation with**

dissimilatory nitrate and Fe(III) reduction. Despite the genomic potential for degradation of different carbon sources, we did not find sugar or organic acid transporters, in line with the inability of strain G5G6 to use these substrates. Using a proteomics analysis, we detected proteins of fumarate-dependent toluene activation, membrane-bound nitrate reductase, and key components of the metal-reducing (Mtr) pathway under both nitrate- and Fe(III)-reducing conditions. High abundance of the multiheme cytochrome MtrC implied that a porin–cytochrome complex was used for respiratory Fe(III) reduction. Remarkably, strain G5G6 contains a full set of genes for aerobic toluene degradation, and we detected enzymes of aerobic toluene degradation under both nitrate- and Fe(III)-reducing conditions. We further detected an ATP-dependent benzoyl-CoA reductase, reactive oxygen species detoxification proteins, and cytochrome c oxidase indicating a facultative anaerobic lifestyle of strain G5G6. Correspondingly, we found diffusion through the septa a substantial source of oxygen in the cultures enabling concurrent aerobic and anaerobic toluene degradation by strain G5G6.

## Introduction

Mono- and multi-aromatic compounds form a severe threat to environmental and human health. *In situ* microbial conversion is a sustainable and feasible option to remove these compounds from contaminated sites (Lueders, 2017); however, understanding of the metabolism of the responsible microorganisms is needed to implement and optimize removal. Denitrifying Betaproteobacteria are among the key players in anaerobic degradation of monoaromatic hydrocarbons (Lueders, 2017). *Georgfuchsia toluolica* strain G5G6<sup>T</sup> was isolated from the Banisveld aquifer (the Netherlands) polluted with low concentrations of benzene, toluene, ethylbenzene and xylene isomers (BTEX) (Weelink *et al.*, 2009). Analysis of functional genes of anaerobic BTEX degradation and 16S rRNA genes has revealed

Received 17 April, 2021; accepted 19 July, 2021. \*For correspondence. E-mail siavash.atashgahi@wur.nl; Tel. +31 317484683.

<sup>†</sup>These authors contributed equally to this work.

widespread environmental occurrence of *Georgfuchsia*. For instance, 89% of the sequences encoding the key enzyme benzylsuccinate synthase (*bssA*) retrieved from the Banisveld aquifer were closely affiliated with *G. toluolica* indicating its important role in the anaerobic degradation of toluene and xylene (Staats *et al.*, 2011). Moreover, *Georgfuchsia* 16S rRNA sequences have been detected in a German coal tar contaminated aquifer (Sperfeld *et al.*, 2018), a Chinese drinking water treatment plant (Dong *et al.*, 2019), a pilot-scale bioreactor mediating sulfide-driven denitrification in Brazil (Saia *et al.*, 2019), and from toluene-degrading and Fe(III)-reducing microcosms prepared from contaminated sites in Germany (Pilloni *et al.*, 2011) and United States (Sun *et al.*, 2014).

Strain G5G6 uses nitrate, Fe(III), and Mn(IV) as electron acceptors and monoaromatic compounds such as toluene, ethylbenzene, phenol, cresol, benzaldehyde and hydroxybenzoate as electron donors. Strain G5G6 is the only isolate of the genus *Georgfuchsia* and has a number of unique physiological features making it distinct among microbial isolates capable of anaerobic degradation of aromatic hydrocarbons: (i) it is the only known betaproteobacterial isolate capable of coupling toluene oxidation to reduction of nitrate, Fe(III), or Mn(IV), whereas known alpha- and betaproteobacterial anaerobic toluene degraders within the genera *Azoarcus*, *Thauera*, *Aromatoleum*, and *Magnetospirillum* cannot couple toluene oxidation to Fe(III) reduction (Evans *et al.*, 1991; Biegert *et al.*, 1996; Shinoda *et al.*, 2004; Rabus *et al.*, 2005; Shinoda *et al.*, 2005; Blázquez *et al.*, 2018; Meyer-Cifuentes *et al.*, 2020), (ii) strain G5G6 is a toluene-oxidizing, Fe(III)-reducing bacterium that does not belong to the *Geobacteraceae*, (iii) strain G5G6 is dedicated to the degradation of monoaromatic compounds and does not use more general environmentally available carbon sources such as acetate, lactate and glucose, (iv) strain G5G6 does not seem to grow aerobically, but its draft genome sequence showed presence of genes involved in aerobic monoaromatic degradation (Oosterkamp, 2013), and (v) compared to other toluene-degrading isolates and consortia, strain G5G6 displays significantly different values in dual isotope (carbon and hydrogen) analyses during toluene degradation coupled to nitrate, Fe(III), or Mn(IV) reduction suggesting variations in the enzymatic transition state depending on the available terminal electron acceptor (Dorer *et al.*, 2016). These traits make strain G5G6 an appealing model bacterium to study toluene degradation using different electron acceptors. Here, we investigated the metabolism of toluene under nitrate- and Fe(III)-reducing conditions using a multi-omics approach and found an unexpected redundancy in peripheral metabolic pathways for toluene

degradation. Most surprisingly, strain G5G6 expresses a full set of genes for aerobic toluene degradation indicating a facultative lifestyle.

## Results and discussion

To obtain insight into the metabolism of *G. toluolica* strain G5G6<sup>T</sup> (JCM 14632, DSM 19032), we sequenced its genome and performed comparative proteomics of cells grown on toluene with either nitrate or Fe(III) as electron acceptor. Strain G5G6 was grown in anoxic medium using toluene (0.4 mM) and nitrate (5 mM) as described (Weelink *et al.*, 2009). Resazurin (0.005 g/l) and L-cysteine (1 mM) were added as redox indicator and reducing reagent, respectively. Genomic DNA was extracted using MasterPure™ Gram Positive DNA Purification Kit (Epicentre, WI, USA). The genome of strain G5G6 was sequenced using Single Molecule, Real-Time (SMRT) sequencing technology with the PacBio RSII platform (Novogene, Hong Kong), assembled using PacBio's dedicated SMRT analysis software suite (SMRT Link, v5.9), and annotated using MicroScope (Microbial Genome Annotation & Analysis Platform) (Vallenet *et al.*, 2020). The resulting genome of strain G5G6 consisted of two contigs: a long contig of 3 465 762 bp and a short contig of 36 233 bp (accession number ERZ1938153). Proteomic analysis was done from triplicate cultures grown on toluene (0.4 mM) and nitrate (5 mM) or toluene (0.4 mM) and Fe(III) citrate (20 mM) using procedures described previously (Peng *et al.*, 2020). All cultures had been adapted to the respective growth condition by at least three previous transfers (5% v/v) to fresh media, and three spikes of toluene (0.4 mM at each spike) during each transfer.

### *Growth restriction to monoaromatic compounds*

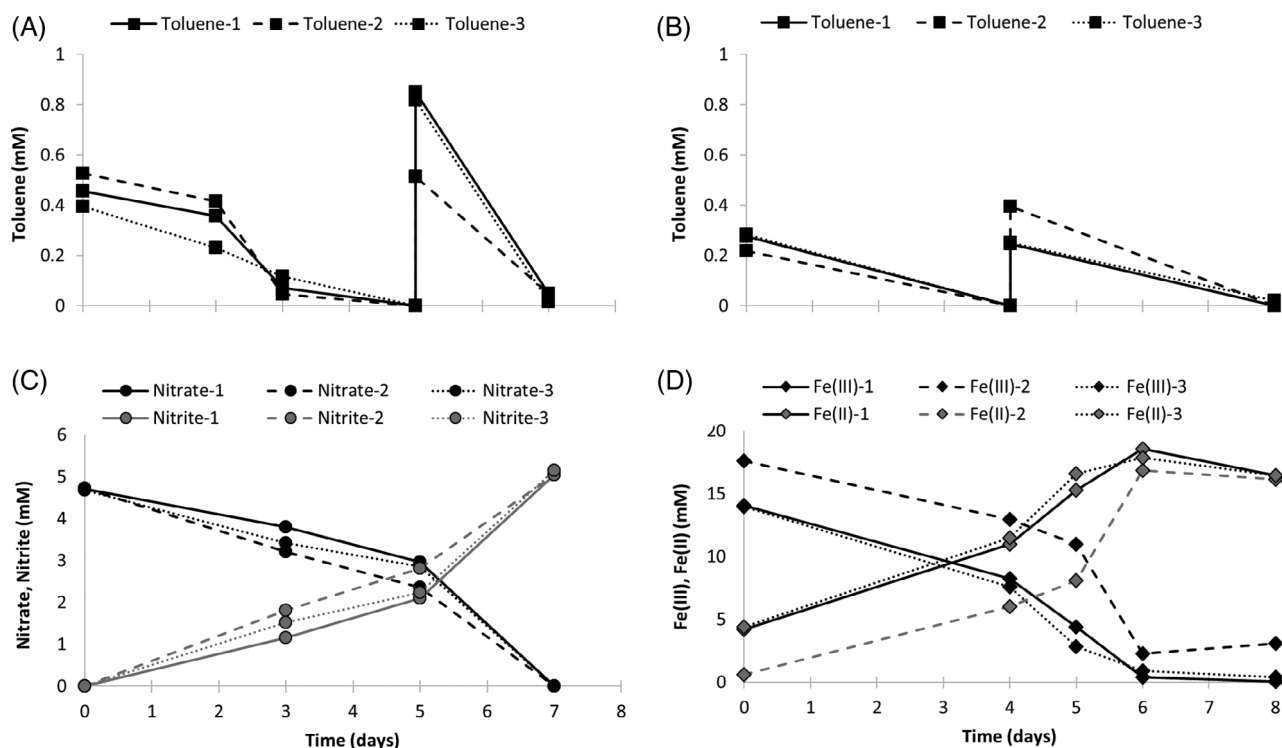
Strain G5G6 was reported to use a restricted range of carbon sources including toluene, ethylbenzene, phenol, *p*-cresol, *m*-cresol, benzaldehyde and *p*-hydroxybenzoate (Weelink *et al.*, 2009). Strain G5G6 was not able to grow on carboxylic acids (e.g. pyruvate, acetate), amino acids (cysteine, glutamate, aspartate and alanine), sugars (glucose, fructose, xylose and mannitol), alcohols (ethanol and methanol), cholesterol, hydrogen and yeast extract (Weelink *et al.*, 2009). Our analysis of the genome of strain G5G6 revealed that most of the genes for glycolysis/gluconeogenesis and the tricarboxylic acid (TCA) cycle are present. We also found proteins of these pathways in our proteomic analysis. However, no sugar transporters were encoded in the genome of strain G5G6 indicating that these enzymes are most likely used for biosynthetic purposes. The lack of sugar transporters is also in line with the inability of strain G5G6 to grow on external

sugars. While transporter annotations are often ambiguous, most microorganisms contain a set of various imprecisely annotated major facilitator superfamily (MFS) sugar transporters or ABC-type transport systems. The genome of strain G5G6 encodes only few substrate transporters, most of which are not related to sugar or dicarboxylate transport. Moreover, phosphotransferase systems (PTS) were absent, with only two IIA components encoded in the genome. Despite the presence of fumarate reductase (GTOL\_10413–GTOL\_10416), no growth with fumarate as substrate or electron acceptor was reported (Weelink *et al.*, 2009). This implies that fumarate reductase is likely used for succinate conversion to fumarate, which is a vital component of anaerobic toluene degradation. Lactate dehydrogenase is not encoded in the genome, in line with the observation that strain G5G6 cannot grow using lactate as the sole carbon and energy source (Weelink *et al.*, 2009). These metabolic features make strain G5G6 a niche specialist dedicated to degradation of monoaromatic compounds, an appealing trait for bioremediation and restoration of hydrocarbon-contaminated sites. As such, the growth of strain G5G6 in the environment can indicate the presence of monoaromatic compounds. Such cause-and-effect relationships between dedicated degraders and corresponding contaminants have been shown for certain members of *Dehalococcoidia* restricted to anaerobic respiration with organohalogenes as terminal

electron acceptors (Atashgahi *et al.*, 2016). Therefore, tracking the abundance of the 16S rRNA gene of strain G5G6 could aid in monitoring the fate of monoaromatic compounds, especially at sites with elevated nitrate or Fe(III) availability, which would allow strain G5G6 to out-compete the sulfate-dependent degradation processes.

### Toluene degradation

Toluene degradation was coupled to nitrate reduction to nitrite (Fig. 1A and C), or Fe(III) reduction to Fe(II) (Fig. 1B and D). Despite stoichiometric conversion of nitrate to nitrite (nitrate:nitrite ratio of 1:1.08), the stoichiometry of toluene oxidation relative to nitrite formation was 1:4.3 which is similar to the previously reported 1:5.5 ratio (Weelink *et al.*, 2009), but quite different from the expected ratio of 1:18. Similarly, the toluene oxidation relative to Fe(II) formation (1:23.7) was sub-stoichiometric compared to the expected ratio of 1:36, as was noted previously (1:13.6) (Weelink *et al.*, 2009). The same phenomenon was reported in microcosms prepared from marine sediments (1:20) (Kim *et al.*, 2014). Such deviations were attributed to the precipitation of Fe(II) in the medium (Weelink *et al.*, 2009; Kim *et al.*, 2014). However, our analysis showed an Fe(III):Fe(II) ratio of 1:0.94, indicating marginal Fe(II) precipitation. Although a part of the carbon and electrons is incorporated into biomass,



**Fig. 1.** Toluene degradation by strain G5G6 coupled to nitrate reduction (A, C) or Fe(III) reduction (B, D). Triplicate cultures are shown individually.

such a sub-stoichiometric conversion was not expected. Uninoculated control bottles sealed with Teflon-lined butyl rubber septa and sampled overtime did not show toluene loss during incubation, thus excluding abiotic toluene loss (data not shown). It is currently not known how the remaining electrons derived from toluene oxidation are dissipated. Potential explanations could be incomplete toluene degradation and/or production of storage compounds such as polyhydroxybutyrate (PHB). Future experiments using  $^{13}\text{C}$ -toluene and  $^{15}\text{N}$ -nitrate and tracking metabolites may allow to further resolve the observed electron imbalance.

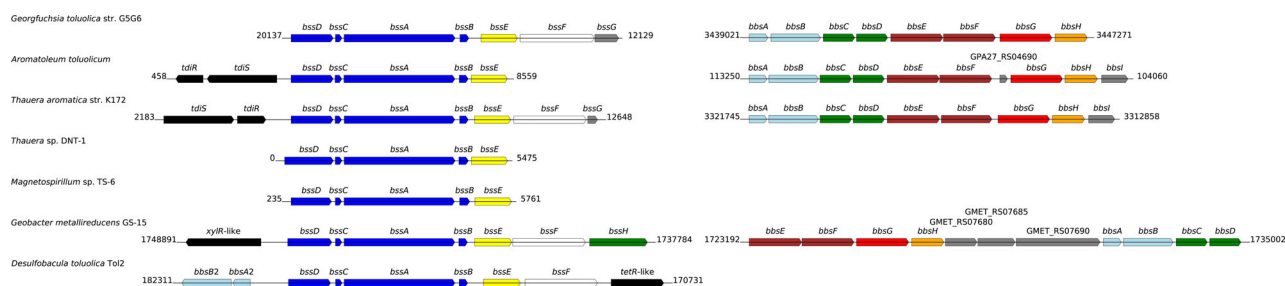
### Anaerobic toluene degradation pathway

The first step in the anaerobic catabolism of toluene is the addition of fumarate to the methyl group of toluene. This reaction is mediated by benzylsuccinate synthase (BSS, encoded by *bssABCDEF*), an oxygen-sensitive glycy radical enzyme complex (Boll *et al.*, 2014; Boll *et al.*, 2020). The product of the reaction, benzylsuccinate, is converted to succinyl-CoA and benzoyl-CoA through a series of  $\beta$ -oxidation-like reactions involving enzymes encoded by the *bbs* genes (Biegert *et al.*, 1996; Carmona *et al.*, 2009). The *bss* and *bbs* genes are present in the genome of *G. toluolica* in the same order and orientation as for other known anaerobic toluene degraders (Fig. 2) indicating their involvement in anaerobic toluene degradation. Interestingly, the genes of anaerobic toluene degradation are also present on the short contig, indicating gene duplication. Compared to the long contig, this contig has a lower GC content (55.2 vs. 58.6%), shows markedly increased coverage and encodes two transposases. This indicates that the small contig is likely a plasmid or part of a large repetitive region in the genome and implies potential distribution of xenobiotic degradation genes by horizontal gene transfer (Top and Springael, 2003). We detected the BssABCDEF and BbsABDEFG proteins in the

proteome, which were among the most prevalent proteins detected under both nitrate- and Fe(III)-reducing conditions (Supporting Information Table S1). Benzoyl-CoA is the central metabolite of the anaerobic degradation of aromatic compounds and is reductively dearomatized by benzoyl-CoA reductase (BCR) prior to ring cleavage. BCR is a highly oxygen-sensitive enzyme within the benzoyl-CoA pathway (Carmona *et al.*, 2009). High abundance of BcrABCD under the tested conditions indicates that ATP-dependent class I BCR enzymes are employed by strain G5G6, unlike other strict anaerobes that use ATP-independent class II BCR enzymes (Boll *et al.*, 2014; Boll *et al.*, 2020). All downstream enzymes of anaerobic benzoyl-CoA degradation were found in our proteomic analysis under both nitrate- and Fe(III)-reducing conditions (Supporting Information Table S1).

### Aerobic toluene degradation pathways

Interestingly, gene clusters encoding enzymes for aerobic degradation of toluene including the initial activation of toluene to *m*-cresol by toluene-4-monooxygenase (*tmoADE*), *m*-cresol hydroxylation to 3-methylcatechol by phenol hydroxylase (*dmpABCDEF*), and subsequent ring opening by catechol 2,3-dioxygenase (*xyIE*) are located directly next to the genes of anaerobic toluene degradation. Remarkably, proteins of aerobic toluene degradation were also detected under both nitrate- and Fe(III)-reducing conditions. Except for toluene-4-monooxygenase (TmoAE), all other proteins of aerobic toluene degradation were significantly ( $P < 0.05$ ) more abundant under nitrate-reducing conditions (Supporting Information Table S2). Moreover, we found proteins of the *box* pathway, the unusually aerobic hybrid benzoate oxidation pathway characterized in *Azoarcus evansii* (Gescher *et al.*, 2002), including benzoate-CoA ligase (GTOL\_11785), benzoyl-CoA oxygenase component B (GTOL\_11792), ring-opening benzoyl-CoA-dihydrodiol lyase (GTOL\_11793), and benzaldehyde dehydrogenase (GTOL\_11795) (Supporting

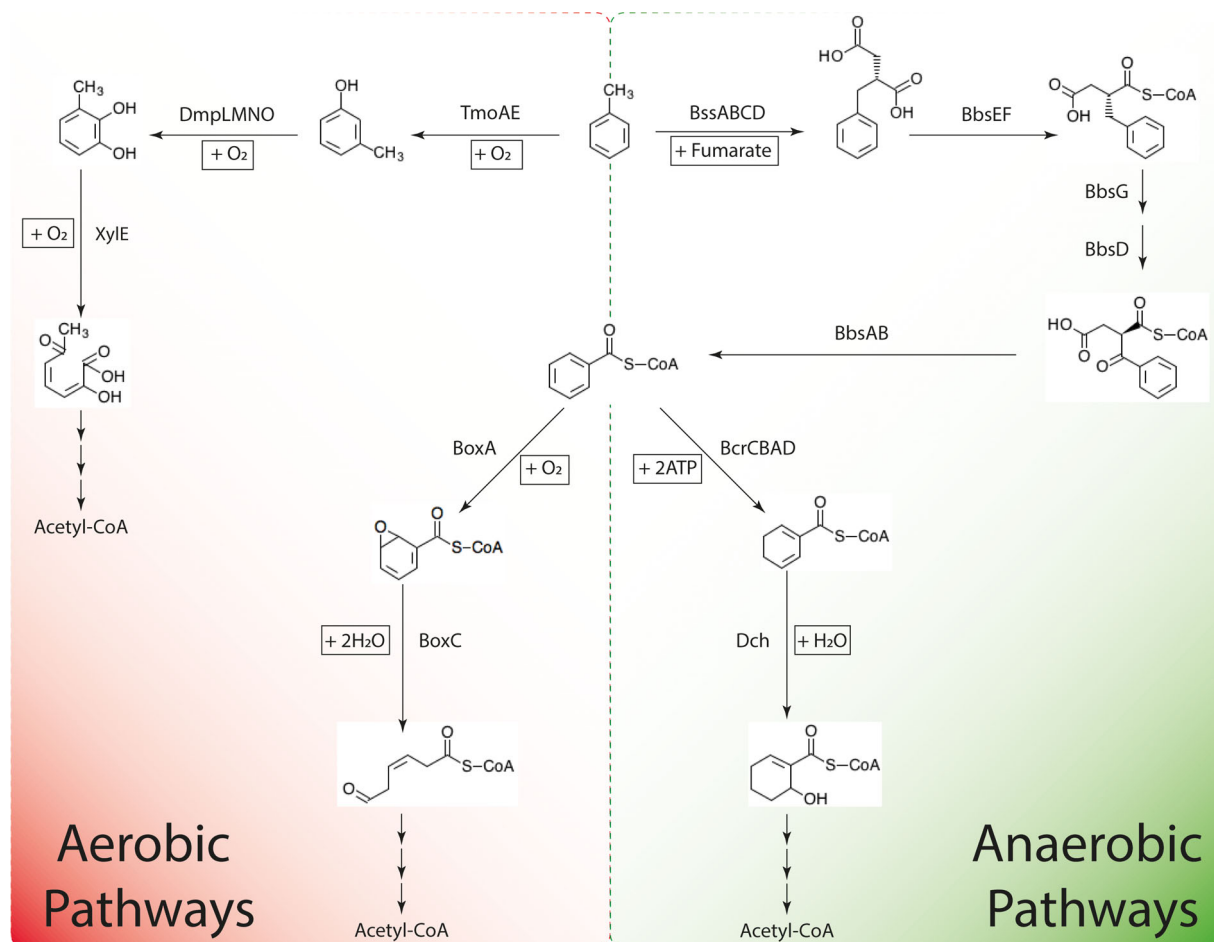


**Fig. 2.** Genomic organization of the *bss* (left hand) and *bbs* gene (right hand) regions in strain G5G6 and selected bacteria capable of anaerobic toluene degradation. The flanking numbers indicate the relative positions of genes identified within the genome of these bacteria. The size and orientation of the genes indicate their relative lengths and directions in which they are transcribed. The names of the genes and the corresponding encoded enzymes are listed in the Supporting Information Table S1. The colour codes of the arrows are adapted from Blázquez *et al.* (2018).

Information Table S2). These proteins were also significantly ( $P < 0.05$ ) more abundant under nitrate-reducing conditions. Our findings indicate redundancy in peripheral metabolic pathways of toluene degradation in strain G5G6 (Fig. 3). Other oxygenases found under both conditions were phenylpropionate ring-hydroxylating dioxygenase (GTOL\_11036), protocatechuate 4,5-dioxygenase beta chain (GTOL\_11170), and 2-nitropropane dioxygenase (GTOL\_11446).

These observations are remarkable, especially since strain G5G6 was considered as a strict anaerobe and no toluene degradation was observed when 5 or 10% oxygen was used in the headspace (Weelink *et al.*, 2009). Consequently, it is likely that strain G5G6 is capable of toluene degradation under hypoxic conditions, as, for instance, encountered in groundwater systems. Strain G5G6 shows some traits typical of facultative anaerobic toluene degraders: (i) the *box* pathways are preferentially active under reduced oxygen tension (Denef *et al.*, 2006) and fit into the lifestyle of facultative anaerobes. This pathway needs only one molecule of oxygen for ring

activation and employs CoA thioesters that are also intermediates in anaerobic toluene degradation (Fuchs *et al.*, 2011). Therefore, once the substrate-CoA thioester is formed under hypoxic conditions, it can be metabolized by either the aerobic or the anaerobic degradation strategy; (ii) strain G5G6 has ATP-dependent class I BCR enzymes, although using ATP for ring reduction is not common for strict anaerobes (Fuchs *et al.*, 2011); (iii) the genomes of strain G5G6 harbours a suite of genes encoding enzymes for oxygen reduction and reactive oxygen species (ROS) detoxification, including high-affinity *cbb3*-type cytochrome *c* oxidase (GTOL\_10453 - GTOL\_10457) and Cytochrome *bd* ubiquinol oxidase (GTOL\_10941 - GTOL\_10942). The presence of high-affinity terminal oxidases in the genome may enable oxygen respiration at nanomolar concentrations (Baughn and Malamy, 2004; Stolper *et al.*, 2010) facilitating adaptation of strain G5G6 to hypoxic aquifers, and protecting oxygen-sensitive enzymes from oxidative damage. Some of these proteins were also found in our proteomic analysis, including cytochrome *c* oxidase (GTOL\_10454,



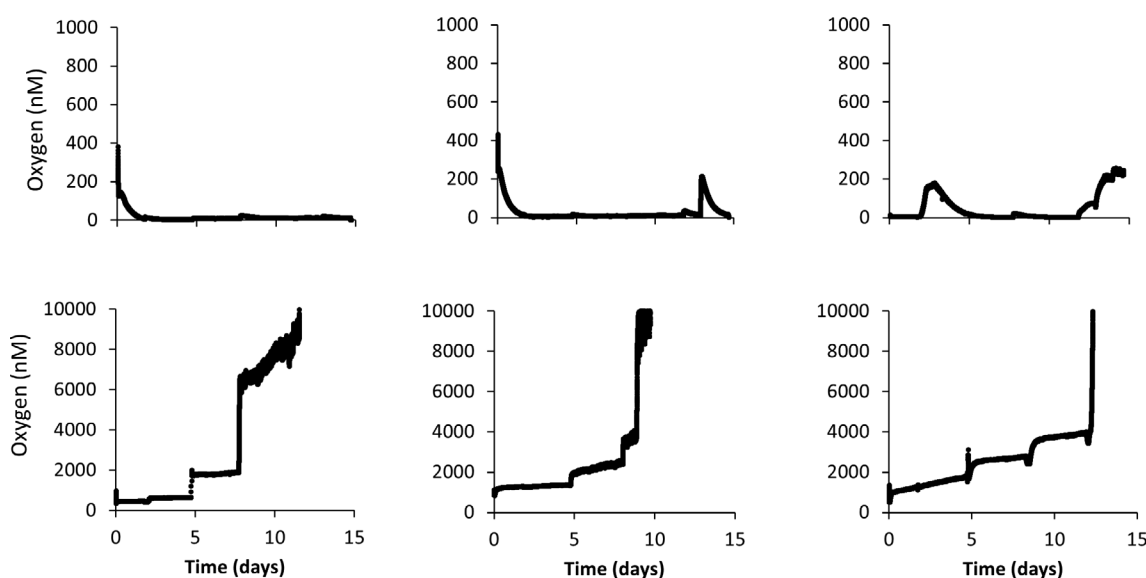
**Fig. 3.** Proposed peripheral toluene degradation by strain G5G6 according to genomic and proteomic analyses.

GTOL\_10455), superoxide dismutase (GTOL\_11750), and catalase-related peroxidase (GTOL\_12777).

#### Identifying the source of oxygen: intracellular oxygen production or oxygen contamination?

Intracellular oxygen production using nitric oxide dismutase (Nod) during nitrate reduction has been observed during anaerobic hydrocarbon degradation coupled to denitrification (Ettwig *et al.*, 2010; Zedelius *et al.*, 2011). However, the genome of strain G5G6 lacks any identifiable *nod* genes. Another possibility is oxygen contamination. Although we applied anaerobic cultivation procedures, oxygen intrusion cannot fully be excluded for example during repeated substrate addition and sampling for headspace and liquid measurements. Whereas Viton stoppers were used for the isolation of the strain G5G6 (Weelink *et al.*, 2009), we applied Teflon-lined butyl rubber septa (VWR, the Netherlands) to seal our microcosms, which might be more prone to oxygen leakage than thick Viton stoppers. To test the possibility of oxygen contamination, we used miniaturized luminescence-based optical sensors (LUMOS, Luminescence Measuring Oxygen Sensor) capable of measuring dissolved oxygen in the nanomolar range (Lehner *et al.*, 2015). The miniaturized sensors were applied within the serum bottles, and the measurement was performed through the bottles as optical windows as outlined previously (Lehner *et al.*, 2015). Triplicate bottles were prepared containing all medium components except inoculum. The bottles were stirred at 300 rpm using magnet stirrers, and

samples were taken at regular time intervals. Oxygen concentration remained below 0.5  $\mu\text{M}$  in bottles containing cysteine (Fig. 4, top panels). However, when cysteine was excluded, oxygen concentration increased drastically exceeding the upper detection limit of the applied sensors (10  $\mu\text{M}$ ) within 10–13 days (Fig. 4, bottom panels) indicating severe oxygen contamination. Considering the slow reaction of cysteine with oxygen, toluene activation by oxygen and hence concurrent anaerobic and aerobic toluene degradation by strain G5G6 adapted to hypoxic aquifers is likely. However, even if 10  $\mu\text{M}$  oxygen was used for toluene degradation, it can degrade only  $\sim 1.3 \mu\text{M}$  toluene and hence cannot explain the sub-stoichiometric toluene degradation coupled to dissimilatory Fe(III) and nitrate reduction (Fig. 1). Future experiments using  $^{13}\text{C}$ -toluene in absence of amended electron acceptors and in presence and absence of cysteine may indicate if oxygen can be used as the electron acceptor. Application of oxygen for toluene activation may corroborate the observed redundancy in peripheral metabolic pathways of toluene degradation (Fig. 3) and explain widespread detection of strain G5G6 in natural and built environments around the globe (Pilloni *et al.*, 2011; Staats *et al.*, 2011; Sun *et al.*, 2014; Sperfeld *et al.*, 2018; Dong *et al.*, 2019; Saia *et al.*, 2019). Simultaneous toluene activation by benzylsuccinate synthase and toluene-4-monooxygenase (based on our proteomic data) may also explain the significantly different toluene isotopic values observed for strain G5G6 compared to other toluene degraders (Dorer *et al.*, 2016), since methyl group hydroxylation by



**Fig. 4.** Measurement of oxygen intrusion into 120 ml serum bottles containing growth medium with (top panels) and without cysteine (bottom panels). Liquid samples (1.5 ml) were taken at day 1, 2, 5, 8, 12 and 15 to simulate actual sampling. All syringes were flushed thoroughly using bottles containing sterile  $\text{N}_2$  and sealed with butyl rubber septa. Each panel represents results from a single bottle. Note that for the Y axes of top and bottom panels different concentration scales are used.

monooxygenases is known to be associated with strong carbon and especially hydrogen isotope fractionation (Vogt *et al.*, 2016). Dorer *et al.* (2016) also used Teflon-coated butyl septa in their isotope fractionation experiments and sampled individual culture bottles several times; hence, a significant penetration of oxygen into the bottles during these experiments cannot be excluded. The facultative anaerobic lifestyle is also intriguing considering that strain G5G6 was first described as a strict anaerobe and named after Georg Fuchs (Weelink *et al.*, 2009), for his scientific contribution to understanding of anaerobic aromatic hydrocarbon degradation (Evans and Fuchs, 1988; Biegert *et al.*, 1996; Fuchs *et al.*, 2011). Oxygen contamination of microcosm experiments designed to investigate ‘anaerobic oxidation’ is a well-known phenomenon for chlorinated ethene degradation experiments, despite the addition of reducing agents to the medium and lack of colour change of the redox indicator resazurin (Gossett, 2010; Fullerton *et al.*, 2013), which may lead to misinterpretation of the results. For instance, *Dechloromonas aromatica* strain RCB was introduced as a benzene-degrading denitrifying bacterium; however, the genome of strain RCB contains no identifiable genes for anaerobic benzene degradation but encodes several aerobic pathways for aromatic degradation (Salinero *et al.*, 2009).

#### How aerobic and anaerobic metabolism could be reconciled

It is not clear how strain G5G6 would make use of the oxygenases at the same time as oxygen-sensitive BSS and BCR enzymes in media reduced with L-cysteine. BSS is a glycy radical enzyme that is cleaved at the glycy radical site in the presence of oxygen (Heider *et al.*, 2016). For instance, despite transcription of the *bssA* gene, peptides of BSS were never detected in *Magnetospirillum* sp. strain 15–1 grown with toluene and oxygen (Meyer-Cifuentes *et al.*, 2020) nor in the rhizosphere of toluene-degrading constructed wetlands from which strain 15–1 was isolated (Lünsmann *et al.*, 2016). Similarly, in toluene-degrading cells of *Thauera* sp. strain DNT-1 (Shinoda *et al.*, 2004) and *Magnetospirillum* sp. strain TS-6 (Shinoda *et al.*, 2005) grown under oxic conditions, transcription of *bbsA* and *bcr* genes was reported. On the other hand, the *bbsA* gene was not transcribed under these conditions in cells of *Azoarcus* sp. strain CIB (Blázquez *et al.*, 2018). One option to protect the oxygen-sensitive glycy radical enzyme is the presence of bacterial microcompartments (BMCs) in which the enzymatic core is encapsulated by a selectively permeable protein shell (Kerfeld *et al.*, 2018). However, the genome of strain G5G6 does not encode any known BMC proteins. Alternatively, the identified ROS

detoxification enzymes and the hybrid *box* pathway of strain G5G6 may protect oxygen-sensitive enzymes. Accordingly, the *box* pathway was proposed to constitute an alternative oxygen-scavenging mechanism that may assist in a rapid shift to aerobic degradation if oxygen levels become higher (Valderrama *et al.*, 2012; Díaz *et al.*, 2013). We recently found transcription of *box* genes in a continuous benzene-degrading denitrifying culture that displayed concurrent anaerobic and aerobic benzene degradation pathways (Atashgahi *et al.*, 2018). Further studies will be necessary to resolve how aerobic and anaerobic metabolism could be reconciled.

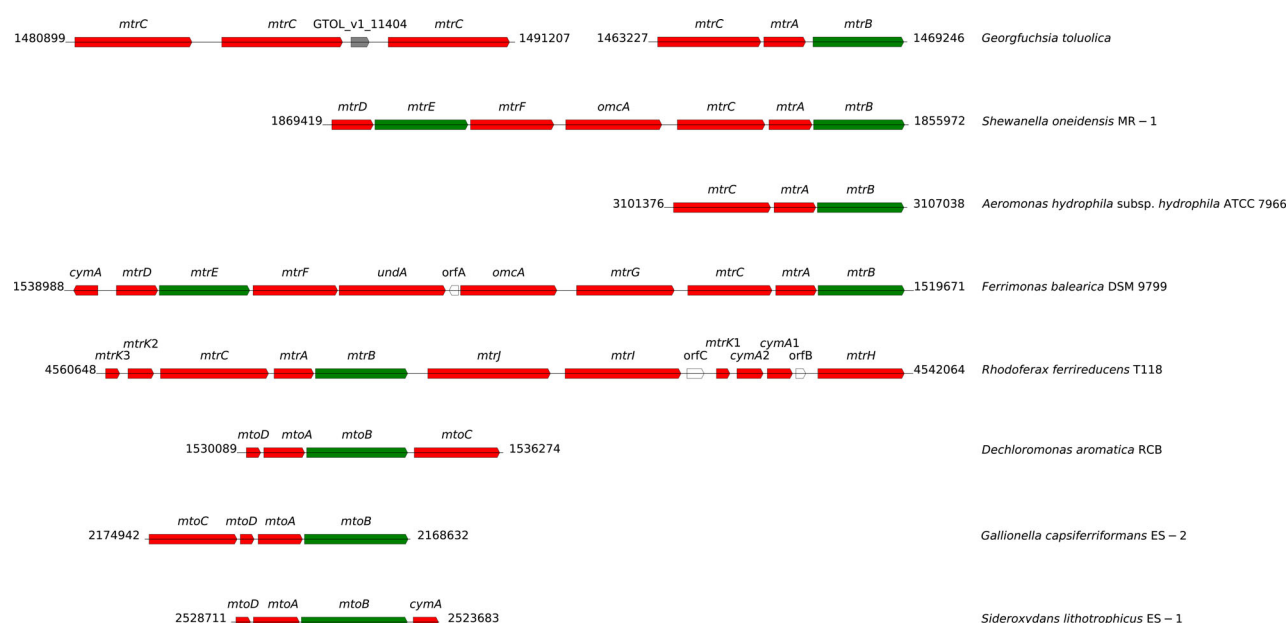
#### Nitrate reduction

Our genome analysis shows that besides the nitrate reductase complex, strain G5G6 also encoded a nitric oxide reductase complex (Supporting Information Table S3). However, genes for nitrite and nitrous-oxide reductases were absent. Consequently, nitrite should be the end product of nitrate reduction (Fig. 1), although complete denitrification was previously proposed based on mass balance analysis (Weelink *et al.*, 2009). We detected NarGHI and NorC under both tested conditions, even though no nitrate was present under Fe(III)-reducing conditions, thus questioning their role during growth with Fe(III) as electron acceptor.

#### Fe(III) reduction

Unlike nitrate and oxygen, Fe(III) minerals cannot cross the bacterial outer membrane owing to their insolubility. Therefore, rather than using inner membrane terminal reductases, Gram-negative bacteria have evolved strategies to transfer electrons from the inner membrane to the iron minerals at the extracellular face of the outer membrane (Xie *et al.*, 2021). The multiprotein porin-cytochrome *c* complex MtrCAB of *Shewanella* strains is the best studied electron-transfer model for the respiratory reduction of mineral oxides (Pitts *et al.*, 2003; Edwards *et al.*, 2020). *MtrA* and *mtrC* encode two decahaem *c*-type cytochromes, and *mtrB* a transmembrane  $\beta$ -barrel that forms a pore in the membrane. The complex of these three proteins allows electrons from the cytoplasmic respiratory chain to be transferred via the periplasmic MtrA through MtrB to the outer-membrane decahaem MtrC. Homologues of *mtrAB* (GTOL\_11386 and GTOL\_11387) are present in the genome of strain G5G6. Further analysis using FeGenie (a tool for identification of iron-related genes) (Garber *et al.*, 2020) indicated that GTOL\_11385 is a homologue of *mtrC*, which encodes for a putative decahaem protein with 10 CxxCH motifs. As such, the *mtrCAB* genes in strain G5G6 are organized in the same sequential order as *mtrCAB* operons known from other Fe(III) oxide-reducing bacteria.





**Fig. 5.** Genomic organization of the *mtr* clusters identified in strain G5G6 and selected bacteria capable of dissimilatory Fe(III)-reduction. Three additional co-localized *mtrC* genes in a genomic region were only found in the genome of strain G5G6. The flanking numbers indicate the relative positions of genes identified within the genome of these bacteria. The size and orientation of the genes indicate their relative lengths and directions in which they are presumed to be transcribed. The genes predicted to encode c-type cytochromes are labelled in red and those predicted to encode  $\beta$ -barrel outer membrane proteins are labelled in green. The figure is modified after Shi *et al.* (2012).

MtrCB were found under both Fe(III)- and nitrate-reducing conditions indicating their constitutive expression (Supporting Information Table S4). In the vicinity of *mtrCAB*, three additional MtrC homologues were encoded with 10 cytochrome c binding sites and signal peptides for export into the periplasm (GTOL\_11402, GTOL\_11403 and GTOL\_11405) that were among the most abundant proteins detected under Fe(III)-reducing conditions (Supporting Information Table S4). These proteins are homologous to the outer-membrane multiheme cytochrome MtrC/OmcA of *Rhodoferrax ferrireducens* and *Shewanella baltica*. Whereas the role of MtrC in Fe(III) reduction is well-known, three additional co-located *mtrC* genes in a single operon and their strong expression under Fe(III)-reducing conditions have not been reported in dissimilatory Fe(III)-reducing prokaryotes (Fig. 5), further signifying the unique genomic and physiological features of strain G5G6.

## Conclusions

Unlike metabolically versatile monoaromatic-degrading microbes, strain G5G6 is restricted to degradation of monoaromatic hydrocarbons. Strain G5G6 shows, however, more versatility in exploiting electron acceptors, and couples toluene oxidation to the reduction of nitrate, Fe(III), Mn(IV), and likely oxygen at low concentrations. These traits signify the importance of strain G5G6 as a

niche specialist dedicated to degradation of monoaromatic compounds in hypoxic environments. Strain G5G6 displays redundancy in peripheral metabolic pathways of toluene degradation that seems to be important in environmental isolates (Denef *et al.*, 2006). The *box* pathway seems to be an adaptation to low or fluctuating oxygen concentrations. Benzoyl-CoA can be diverted to aerobic or anaerobic metabolic routes, depending on the oxygen supply. Detection of oxygen in glass vials sealed with butyl rubber septa indicate that diffusion through the septa may be a substantial source of contamination. Hence, care should be taken in interpreting the results of microcosm experiments designed to investigate anaerobic oxidation of, for example, hydrocarbons. Substantial oxygen contamination can slow down or inhibit anaerobic microbes/pathways, and/or induce aerobic ones. This study casts new light on the physiology of an understudied yet environmentally relevant microorganism. Further studies will be necessary to resolve how aerobic and anaerobic metabolism could be reconciled, and to elucidate strategies employed to protect oxygen-sensitive enzymes of the anaerobic toluene degradation pathway under constant oxygen intrusion.

## Data availability

The genome sequence of strains G5G6 was deposited in the European Bioinformatics Institute (accession number

ERZ1938153). A list of proteins detected from strain G5G6 under nitrate- and Fe(III)-reducing conditions is available in Supporting Information Table S5.

## Acknowledgements

The authors thank Arkadiy Garber for his advice on using FeGenie tool. This work was supported by Wageningen University & Research through its investment theme Resilience, the Technology Foundation (STW), the Applied Science Division of the Dutch Research Council (NWO; project 08053), NWO grant 016.Vidi.189.050, and a Gravitation grant of the Netherlands Ministry of Education, Culture and Science and NWO (project 024.002.002 SIAM). B.K. was supported by the Villum foundation, Denmark (VYI Grant 25491).

## References

- Atashgahi, S., Lu, Y., and Smidt, H. (2016) Overview of known organohalide-respiring bacteria—phylogenetic diversity and environmental distribution. In *Organohalide-Respiring Bacteria*. Adrian, L., and Löffler, F. (eds.). Berlin, Heidelberg: Springer-Verlag, pp. 63–105.
- Atashgahi, S., Hornung, B., Van Der Waals, M.J., Da Rocha, U.N., Hugenholtz, F., Nijssen, B., et al. (2018) A benzene-degrading nitrate-reducing microbial consortium displays aerobic and anaerobic benzene degradation pathways. *Sci Rep* **8**: 4490.
- Baughn, A.D., and Malamy, M.H. (2004) The strict anaerobe *Bacteroides fragilis* grows in and benefits from nanomolar concentrations of oxygen. *Nature* **427**: 441–444.
- Biegert, T., Fuchs, G., and Heider, J. (1996) Evidence that anaerobic oxidation of toluene in the denitrifying bacterium *Thauera aromatica* is initiated by formation of benzylsuccinate from toluene and fumarate. *Eur J Biochem* **238**: 661–668.
- Blázquez, B., Carmona, M., and Díaz, E. (2018) Transcriptional regulation of the peripheral pathway for the anaerobic catabolism of toluene and m-xylene in *Azoarcus* sp CIB. *Front Microbiol* **9**: 506.
- Boll, M., Estelmann, S., and Heider, J. (2020) Catabolic pathways and enzymes involved in the anaerobic degradation of monocyclic aromatic compounds. In *Anaerobic Utilization of Hydrocarbons, Oils, and Lipids. Handbook of Hydrocarbon and Lipid Microbiology*. Boll, M. (ed.). Cham: Springer, pp. 85–133.
- Boll, M., Löffler, C., Morris, B.E., and Kung, J.W. (2014) Anaerobic degradation of homocyclic aromatic compounds via arylcarboxyl-coenzyme A esters: organisms, strategies and key enzymes. *Environ Microbiol* **16**: 612–627.
- Carmona, M., Zamarro, M.T., Blázquez, B., Durante-Rodríguez, G., Juárez, J.F., Valderrama, J.A., et al. (2009) Anaerobic catabolism of aromatic compounds: a genetic and genomic view. *Microbiol Mol Biol Rev* **73**: 71–133.
- Denef, V., Klappenbach, J., Patrauchan, M., Florizone, C., Rodrigues, J., Tsoi, T., et al. (2006) Genetic and genomic insights into the role of benzoate-catabolic pathway
- Proteogenomic analysis of *Georgfuchsia toluolica* 849
- redundancy in *Burkholderia xenovorans* LB400. *Appl Environ Microbiol* **72**: 585–595.
- Díaz, E., Jiménez, J.I., and Nogales, J. (2013) Aerobic degradation of aromatic compounds. *Curr Opin Biotechnol* **24**: 431–442.
- Dong, S., Liu, L., Zhang, Y., and Jiang, F. (2019) Occurrence and succession of bacterial community in O(3)/BAC process of drinking water treatment. *Int J Env Res Pub Health* **16**: 3112.
- Dorer, C., Vogt, C., Neu, T.R., Stryhanyuk, H., and Richnow, H.-H. (2016) Characterization of toluene and ethylbenzene biodegradation under nitrate-, iron(III)- and manganese(IV)-reducing conditions by compound-specific isotope analysis. *Environ Pollut* **211**: 271–281.
- Edwards, M.J., White, G.F., Butt, J.N., Richardson, D.J., and Clarke, T.A. (2020) The crystal structure of a biological insulated transmembrane molecular wire. *Cell* **181**: 665–673. e610.
- Ettwig, K.F., Butler, M.K., Le Paslier, D., Pelletier, E., Mangenot, S., Kuypers, M.M., et al. (2010) Nitrite-driven anaerobic methane oxidation by oxygenic bacteria. *Nature* **464**: 543–548.
- Evans, P., Mang, D., Kim, K.S., and Young, L. (1991) Anaerobic degradation of toluene by a denitrifying bacterium. *Appl Environ Microbiol* **57**: 1139–1145.
- Evans, W.C., and Fuchs, G. (1988) Anaerobic degradation of aromatic compounds. *Annu Rev Microbiol* **42**: 289–317.
- Fuchs, G., Boll, M., and Heider, J. (2011) Microbial degradation of aromatic compounds—from one strategy to four. *Nat Rev Microbiol* **9**: 803–816.
- Fullerton, H., Crawford, M., Bakken, A., Freedman, D.L., and Zinder, S.H. (2013) Anaerobic oxidation of ethene coupled to sulfate reduction in microcosms and enrichment cultures. *Environ Sci Technol* **47**: 12374–12381.
- Garber, A.I., Neelson, K.H., Okamoto, A., McAllister, S.M., Chan, C.S., Barco, R.A., and Merino, N. (2020) FeGenie: a comprehensive tool for the identification of iron genes and iron gene neighborhoods in genome and metagenome assemblies. *Front Microbiol* **11**: 37.
- Gescher, J., Zaar, A., Mohamed, M., Schägger, H., and Fuchs, G. (2002) Genes coding for a new pathway of aerobic benzoate metabolism in *Azoarcus evansii*. *J Bacteriol* **184**: 6301–6315.
- Gossett, J.M. (2010) Sustained aerobic oxidation of vinyl chloride at low oxygen concentrations. *Environ Sci Technol* **44**: 1405–1411.
- Heider, J., Szaleniec, M., Martins, B.M., Seyhan, D., Buckel, W., and Golding, B.T. (2016) Structure and function of benzylsuccinate synthase and related fumarate-adding glycol radical enzymes. *J Mol Microbiol Biotechnol* **26**: 29–44.
- Kerfeld, C.A., Aussignargues, C., Zarzycki, J., Cai, F., and Sutter, M. (2018) Bacterial microcompartments. *Nat Rev Microbiol* **16**: 277–290.
- Kim, S.J., Park, S.J., Cha, I.T., Min, D., Kim, J.S., Chung, W. H., et al. (2014) Metabolic versatility of toluene-degrading, iron-reducing bacteria in tidal flat sediment, characterized by stable isotope probing-based metagenomic analysis. *Environ Microbiol* **16**: 189–204.

- Lehner, P., Larndorfer, C., Garcia-Robledo, E., Larsen, M., Borisov, S.M., Revsbech, N.-P., et al. (2015) LUMOS-A sensitive and reliable optode system for measuring dissolved oxygen in the nanomolar range. *PLoS One* **10**: e0128125.
- Lueders, T. (2017) The ecology of anaerobic degraders of BTEX hydrocarbons in aquifers. *FEMS Microbiol Ecol* **93**: fiw220.
- Lünsmann, V., Kappelmeyer, U., Taubert, A., Nijenhuis, I., Von Bergen, M., Heipieper, H.J., et al. (2016) Aerobic toluene degraders in the rhizosphere of a constructed wetland model show diurnal polyhydroxyalkanoate metabolism. *Appl Environ Microbiol* **82**: 4126–4132.
- Meyer-Cifuentes, I., Gruhl, S., Haage, S.-B., Lünsmann, V., Jehmlich, N., Bergen, M.V., et al. (2020) Benzylsuccinate synthase is post-transcriptionally regulated in the toluene-degrading denitrifier *Magnetospirillum* sp. strain 15–1. *Microorganisms* **8**: 681.
- Oosterkamp, M.J. (2013) Physiology and biochemistry of aromatic hydrocarbon-degrading bacteria that use chlorate and/or nitrate as electron acceptor. Wageningen University & Research, Wageningen, The Netherlands.
- Peng, P., Goris, T., Lu, Y., Nijse, B., Burrichter, A., Schleheck, D., et al. (2020) Organohalide-respiring *Desulfoluna* species isolated from marine environments. *ISME J* **14**: 815–827.
- Pilloni, G., von Netzer, F., Engel, M., and Lueders, T. (2011) Electron acceptor-dependent identification of key anaerobic toluene degraders at a tar-oil-contaminated aquifer by Pyro-SIP. *FEMS Microbiol Ecol* **78**: 165–175.
- Pitts, K.E., Dobbin, P.S., Reyes-Ramirez, F., Thomson, A.J., Richardson, D.J., and Seward, H.E. (2003) Characterization of the *Shewanella oneidensis* MR-1 decaheme cytochrome MtrA expression in *Escherichia coli* confers the ability to reduce soluble Fe (III) chelates. *J Biol Chem* **278**: 27758–27765.
- Rabus, R., Kube, M., Heider, J., Beck, A., Heitmann, K., Widdel, F., and Reinhardt, R. (2005) The genome sequence of an anaerobic aromatic-degrading denitrifying bacterium, strain EbN1. *Arch Microbiol* **183**: 27–36.
- Saia, F.T., de Souza, T.S.O., Pozzi, E., Duarte, R.T.D., and Foresti, E. (2019) Sulfide-driven denitrification: detecting active microorganisms in fed-batch enrichment cultures by DNA stable isotope probing. *Mol Biol Rep* **46**: 5309–5321.
- Salinero, K.K., Keller, K., Feil, W.S., Feil, H., Trong, S., Di Bartolo, G., and Lapidus, A. (2009) Metabolic analysis of the soil microbe *Dechloromonas aromatica* str. RCB: indications of a surprisingly complex life-style and cryptic anaerobic pathways for aromatic degradation. *BMC Genomics* **10**: 1–23.
- Shi, L., Rosso, K.M., Zachara, J.M., and Fredrickson, J.K. (2012) Mtr extracellular electron-transfer pathways in Fe (III)-reducing or Fe (II)-oxidizing bacteria: a genomic perspective. *Biochem Soc Trans* **40**: 1261–1267.
- Shinoda, Y., Sakai, Y., Uenishi, H., Uchihashi, Y., Hiraishi, A., Yukawa, H., et al. (2004) Aerobic and anaerobic toluene degradation by a newly isolated denitrifying bacterium, *Thauera* sp. strain DNT-1. *Appl Environ Microbiol* **70**: 1385–1392.
- Shinoda, Y., Akagi, J., Uchihashi, Y., Hiraishi, A., Yukawa, H., Yurimoto, H., et al. (2005) Anaerobic degradation of aromatic compounds by *Magnetospirillum* strains: isolation and degradation genes. *Biosci Biotechnol Biochem* **69**: 1483–1491.
- Sperfeld, M., Rauschenbach, C., Diekert, G., and Studenik, S. (2018) Microbial community of a gasworks aquifer and identification of nitrate-reducing *Azoarcus* and *Georgfuchsia* as key players in BTEX degradation. *Water Res* **132**: 146–157.
- Staats, M., Braster, M., and Röling, W.F.M. (2011) Molecular diversity and distribution of aromatic hydrocarbon-degrading anaerobes across a landfill leachate plume. *Environ Microbiol* **13**: 1216–1227.
- Stolper, D.A., Revsbech, N.P., and Canfield, D.E. (2010) Aerobic growth at nanomolar oxygen concentrations. *Proc Natl Acad Sci* **107**: 18755–18760.
- Sun, W., Sun, X., and Cupples, A.M. (2014) Presence, diversity and enumeration of functional genes (*bssA* and *bamA*) relating to toluene degradation across a range of redox conditions and inoculum sources. *Biodegradation* **25**: 189–203.
- Top, E.M., and Springael, D. (2003) The role of mobile genetic elements in bacterial adaptation to xenobiotic organic compounds. *Curr Opin Biotechnol* **14**: 262–269.
- Valderrama, J.A., Durante-Rodríguez, G., Blázquez, B., García, J.L., Carmona, M., and Díaz, E. (2012) Bacterial degradation of benzoate cross-regulation between aerobic and anaerobic pathways. *J Biol Chem* **287**: 10494–10508.
- Vallenet, D., Calteau, A., Dubois, M., Amours, P., Bazin, A., Beuvin, M., et al. (2020) MicroScope: an integrated platform for the annotation and exploration of microbial gene functions through genomic, pangenomic and metabolic comparative analysis. *Nucleic Acids Res* **48**: D579–D589.
- Vogt, C., Dorer, C., Musat, F., and Richnow, H.-H. (2016) Multi-element isotope fractionation concepts to characterize the biodegradation of hydrocarbons—from enzymes to the environment. *Curr Opin Biotechnol* **41**: 90–98.
- Weelink, S.A.B., Van Doesburg, W., Saia, F.T., Rijpstra, W.I. C., Röling, W.F.M., Smidt, H., and Stams, A.J.M. (2009) A strictly anaerobic betaproteobacterium *Georgfuchsia toluolica* gen. nov., sp. nov. degrades aromatic compounds with Fe(III), Mn(IV) or nitrate as an electron acceptor. *FEMS Microbiol Ecol* **70**: 575–585.
- Xie, Q., Lu, Y., Tang, L., Zeng, G., Yang, Z., Fan, C., et al. (2021) The mechanism and application of bidirectional extracellular electron transport in the field of energy and environment. *Crit Rev Environ Sci Technol* **51**: 1924–1969.
- Zedelius, J., Rabus, R., Grundmann, O., Werner, I., Brodkorb, D., Schreiber, F., et al. (2011) Alkane degradation under anoxic conditions by a nitrate-reducing bacterium with possible involvement of the electron acceptor in substrate activation. *Environ Microbiol Rep* **3**: 125–135.

## Supporting Information

Additional Supporting Information may be found in the online version of this article at the publisher's web-site:

**Table S1** Abundance of proteins of anaerobic toluene degradation detected from G5G6 cultures grown on toluene and Fe(III) (TF) or toluene and nitrate (TN).

**Table S2.** Abundance of proteins of aerobic toluene degradation detected from G5G6 cultures grown on toluene and Fe(III) (TF) or toluene and nitrate (TN).

**Table S3.** Abundance of proteins involved in denitrification detected from G5G6 cultures grown on toluene and Fe(III) (TF) or toluene and nitrate (TN).

**Table S4.** Abundance of proteins involved in Fe(III)citrate reduction detected from G5G6 cultures grown on toluene and Fe(III) (TF) or toluene and nitrate (TN).

**Table S5** List of proteins detected from strain G5G6 under Fe(III)-reducing (TF) and nitrate-reducing (TN) conditions.