



HAL
open science

A targeted radio pulsar survey of redback candidates with MeerKAT

T Thongmeekom, C.J Clark, R.P Breton, M Burgay, L Nieder, P.C.C
Freire, E.D Barr, B.W Stappers, S.M Ransom, S Buchner, et al.

► **To cite this version:**

T Thongmeekom, C.J Clark, R.P Breton, M Burgay, L Nieder, et al.. A targeted radio pulsar survey of redback candidates with MeerKAT. *Monthly Notices of the Royal Astronomical Society*, 2024, 530 (4), pp.4676-4694. 10.1093/mnras/stae787 . hal-04531979

HAL Id: hal-04531979

<https://hal.science/hal-04531979v1>

Submitted on 26 Sep 2024

HAL is a multi-disciplinary open access archive for the deposit and dissemination of scientific research documents, whether they are published or not. The documents may come from teaching and research institutions in France or abroad, or from public or private research centers.

L'archive ouverte pluridisciplinaire **HAL**, est destinée au dépôt et à la diffusion de documents scientifiques de niveau recherche, publiés ou non, émanant des établissements d'enseignement et de recherche français ou étrangers, des laboratoires publics ou privés.



Distributed under a Creative Commons Attribution 4.0 International License

A targeted radio pulsar survey of redback candidates with MeerKAT

T. Thongmearkom ^{1,2}★, C. J. Clark ^{3,4}★, R. P. Breton ^{5,1}★, M. Burgay ^{6,5}, L. Nieder ^{3,4},
 P. C. C. Freire ⁶, E. D. Barr ⁶, B. W. Stappers ¹, S. M. Ransom ⁷, S. Buchner ⁸, F. Calore ⁹,
 D. J. Champion ⁶, I. Cognard ^{10,11}, J.-M. Grießmeier ^{10,11}, M. Kramer ^{6,1}, L. Levin ¹,
 P. V. Padmanabh ^{3,4,6}, A. Possenti ⁵, A. Ridolfi ^{5,6}, V. Venkatraman Krishnan ⁶ and
 L. Vleeschower ^{1,12}

¹Jodrell Bank Centre for Astrophysics, Department of Physics and Astronomy, The University of Manchester, Manchester M13 9PL, UK

²National Astronomical Research Institute of Thailand, Don Kaeo, Mae Rim, Chiang Mai 50180, Thailand

³Max Planck Institute for Gravitational Physics (Albert Einstein Institute), D-30167 Hannover, Germany

⁴Leibniz Universität Hannover, D-30167 Hannover, Germany

⁵INAF – Osservatorio Astronomico di Cagliari, Via della Scienza 5, I-09047 Selargius (CA), Italy

⁶Max-Planck-Institut für Radioastronomie, Auf dem Hügel 69, D-53121 Bonn, Germany

⁷National Radio Astronomy Observatory, 520 Edgemont Road, Charlottesville, VA 22903, USA

⁸South African Radio Astronomy Observatory, 2 Fir Street, Black River Park, Observatory 7925, South Africa

⁹LAPTh, CNRS, USMB, F-74940 Annecy, France

¹⁰LPC2E – Université d’Orléans / CNRS, F-45071 Orléans cedex 2, France

¹¹Observatoire Radioastronomique de Nançay (ORN), Observatoire de Paris, Université PSL, Univ Orléans, CNRS, F-18330 Nançay, France

¹²Center for Gravitation, Cosmology, and Astrophysics, Department of Physics, University of Wisconsin-Milwaukee, P.O. Box 413, Milwaukee, WI 53201, USA

Accepted 2024 March 13. Received 2024 March 8; in original form 2023 December 15

ABSTRACT

Redbacks are millisecond pulsar binaries with low-mass, irradiated companions. These systems have a rich phenomenology that can be used to probe binary evolution models, pulsar wind physics, and the neutron star mass distribution. A number of high-confidence redback candidates have been identified through searches for variable optical and X-ray sources within the localization regions of unidentified but pulsar-like *Fermi*-LAT gamma-ray sources. However, these candidates remain unconfirmed until pulsations are detected. As part of the TRAPUM project, we searched for radio pulsations from six of these redback candidates with MeerKAT. We discovered three new radio millisecond pulsars, PSRs J0838–2827, J0955–3947, and J2333–5526, confirming their redback nature. PSR J0838–2827 remained undetected for 2 yr after our discovery despite repeated observations, likely due to evaporated material absorbing the radio emission for long periods of time. While, to our knowledge, this system has not undergone a transition to an accreting state, the disappearance, likely caused by extreme eclipses, illustrates the transient nature of spider pulsars and the heavy selection bias in uncovering their radio population. Radio timing enabled the detection of gamma-ray pulsations from all three pulsars, from which we obtained 15-yr timing solutions. All of these sources exhibit complex orbital period variations consistent with gravitational quadrupole moment variations in the companion stars. These timing solutions also constrain the binary mass ratios, allowing us to narrow down the pulsar masses. We find that PSR J2333–5526 may have a neutron star mass in excess of $2 M_{\odot}$.

Key words: binaries: general – pulsars: general – pulsars: individual: PSR J0838–2827, PSR J0955–3947, PSR J2333–5526 – gamma rays: stars.

1 INTRODUCTION

Spider pulsars are a family of binary systems in which a millisecond pulsar (MSP) orbits with a tidally locked, low-mass degenerate, or semidegenerate companion in a tight orbit (\sim few hours up to a day; e.g. Roberts et al. 2017). Their population is generally subdivided into

two main categories, black widows and redbacks, according to the mass of their companion ($\ll 0.1 M_{\odot}$ and 0.2 – $0.4 M_{\odot}$, respectively; Roberts 2012). In these systems, the two stars interact via an intra-binary shock between the pulsar’s relativistic wind and the companion stellar wind. The very energetic pulsar is responsible for the strong irradiation of the companion, whereby the side that faces the pulsar can be heated to several thousands of degrees above the opposite side, thus creating strong variability at visible wavelengths (e.g. Callanan, van Paradijs & Rengelink 1995; Breton et al. 2013). Furthermore, in a large fraction of systems, material blown away from

* E-mail: tinn.thongmearkom@postgrad.manchester.ac.uk (TT);
colin.clark@aei.mpg.de (CC); rene.breton@manchester.ac.uk (RB)

the companion’s surface by the pulsar wind can obstruct the radio emission from the pulsar (most likely via synchrotron absorption) and cause eclipses that can extend for a significant fraction of the orbit (e.g. Polzin et al. 2018, 2019). Spider companions therefore ‘evaporate’ over time, though current mass-loss rate estimates (e.g. Polzin et al. 2018) suggest that this process is not sufficient to provide a formation channel for isolated MSPs, as initially proposed by Fruchter, Stinebring & Taylor (1988).

The evolutionary history of spider pulsars leading to their current state is still poorly understood, but they most certainly experience a phase of mass transfer from the companion, which pumps angular momentum into the pulsar and where the system would be visible as an X-ray binary (Alpar et al. 1982; Radhakrishnan & Srinivasan 1982; Bhattacharya & van den Heuvel 1991). This evolutionary link was clearly evidenced with the discovery of the accreting MSPs (Wijnands & van der Klis 1998; Chakrabarty et al. 2003) and then of the transitional millisecond pulsars in which X-ray binaries have been seen to turn into reback pulsars (Archibald et al. 2009) and vice versa (Papitto et al. 2013; Stappers et al. 2014). More recently, it became clearer that irradiation effects play a crucial role in dictating their evolution pathway, with the irradiation efficiency potentially determining if a system turns into a black widow or a reback (e.g. Chen et al. 2013; De Vito, Benvenuto & Horvath 2020).

Multiwavelength studies make it possible to constrain orbital parameters and masses of spider pulsar systems. Most notably, pulsar timing in the radio and gamma-ray regimes enables one to measure the five Keplerian parameters of the pulsar with great accuracy. Optical photometric light curves, on the other hand, can be modelled to derive the orbital inclination and, if combined with radial velocity information from spectroscopy of the companion, they can be used to infer the mass of each component (Lorimer & Kramer 2004). Evidence showing that spider systems have higher-than-average neutron star masses ($1.46 \pm 0.30 M_{\odot}$ for an average neutron star; Zhang et al. 2011) has now been found, with a report that the neutron stars in rebacks have a median mass of $1.78 \pm 0.09 M_{\odot}$ (Strader et al. 2019). This motivates searches for $>2M_{\odot}$ neutron stars, which could constrain the equation of state – some interesting examples above $2M_{\odot}$ have possibly been found (Linares 2020; Romani et al. 2022).

Multiple approaches have been pursued to find new spider pulsars. Unguided wide field radio pulsar survey has only found a handful of the ~ 80 known spiders thus far (the ATNF Pulsar Catalogue; Manchester et al. 2005), including the original black widow (Fruchter et al. 1988). This technique is comparatively less efficient at finding spider pulsars than other types of binary pulsars, primarily since radio eclipses and the relatively large and rapidly changing accelerations heavily hinder the detection of spiders. Instead, the bulk of the spider population has been uncovered through the targeted approach of pointing at candidates identified via multiwavelength campaigns. By far the most successful approach to finding new Galactic spiders has been to pursue their gamma-ray signature. In 2008, the *Fermi* Gamma-ray Space Telescope started to operate. One of the telescope’s instruments, the Large Area Telescope (LAT; Atwood et al. 2009), is especially suitable for detecting the pulsed GeV gamma-ray emission from millisecond pulsars (Abdo et al. 2009), which are particularly efficient high-energy emitters (Smith et al. 2023). The *Fermi*-LAT has detected and localized a large number of point sources. The latest catalogue, the *Fermi*-LAT Fourth Source Catalogue (Abdollahi et al. 2020) Data Release 4 (4FGL-DR4, Ballet et al. 2023) detecting more than 7000 sources, while the Third *Fermi*-LAT Gamma-ray Pulsar Catalogue contains nearly 300 confirmed gamma-ray pulsars (Smith et al. 2023).

Point-like gamma-ray sources that have not been associated with other objects at other wavelengths – of which thousands remain – provide a very effective list of locations that can be searched for energetic pulsars in the radio where they are bright enough to yield a detection over a short minutes-to-hour observation. Gamma-ray point source characteristics such as variability and spectral properties can also be used to identify sources most likely to be a pulsar (e.g. Saz Parkinson et al. 2016). Multiple surveys, initially coordinated through the *Fermi* Pulsar Search Consortium (PSC; Ray et al. 2012), have successfully employed this strategy, including studies conducted with the Green Bank Telescope (GBT; Ransom et al. 2011), the Murriyang Parkes telescope (e.g. Keith et al. 2011; Camilo et al. 2015), the Arecibo telescope (Cromartie et al. 2016), and the Five-hundred-meter Aperture Spherical radio Telescope (Wang et al. 2021). Given that an important limitation to finding pulsars is instantaneous sensitivity, the MeerKAT radio telescope has recently provided us with a new, improved tool for this quest, as was demonstrated by the first results of the TRANSIENTS and PULSARS with MeerKAT (TRAPUM) survey of unidentified *Fermi*-LAT sources, which discovered 9 new pulsars from a search of 79 unidentified gamma-ray sources (Clark et al. 2023b).

A similar strategy to the one laid out above is to pursue candidate spider pulsars identified through searches for periodic optical and X-ray counterparts, often confirmed with spectral velocity measurements indicating an unseen neutron-star-mass primary (e.g. Kong et al. 2012; Romani 2012). These candidates are usually identified through the monitoring of suitable *Fermi* gamma-ray unidentified point sources or serendipitous observations of such fields made by large-scale surveys. More than a dozen candidate reback and black-widow binaries have been identified in this way (see table 15 of Smith et al. 2023), but only a handful of these have been confirmed by a pulsation detection. Not including the discoveries that we present here, just three optically identified reback candidates, PSRs J2339–0533 (Ray et al. 2020), J0212+5320 (Perez et al. 2023), and J1910–5320 (Au et al. 2023; Dodge et al. 2024) were confirmed via radio pulsations, while a further three binaries were confirmed by direct searches for gamma-ray pulsations in the *Fermi*-LAT data (Pletsch et al. 2012; Nieder et al. 2020b; Clark et al. 2021), using constraints from optical monitoring to reduce the orbital parameter space. The long integration time required to accumulate enough gamma-ray photons makes this latter method a challenging computational task (Nieder et al. 2020a), and in many cases the available orbital constraints are not sufficiently precise to make a gamma-ray pulsation search feasible, leaving radio searches as the only means to confirm their MSP nature. However, only two of these three gamma-ray discovered spiders were eventually detected by folding radio observations using the gamma-ray timing ephemeris (Ray et al. 2013; Corongiu et al. 2021), and one of these, PSR J1311–3430, is only very sporadically detectable. The third of these systems, PSR J1653–0158, remains undetected in radio despite efforts by many large radio telescopes (Nieder et al. 2020b), suggesting that some spider binaries may be nearly always enshrouded by evaporated material. Hence, both radio and gamma-ray searches of these candidate systems remain important complementary approaches for obtaining a more complete view of this population.

Despite the rather low yield to date, this refined strategy of targeting optically identified candidate binaries provides a number of potential advantages over more traditional surveys. First, the optical signature provides a much stronger prior as to the existence of a spider pulsar than the gamma-ray properties. Secondly, the localization of the candidate is generally much better (subarcsecond

Table 1. List of redback candidates in our survey, with parameter constraints from optical observations from the references. Positions are from *Gaia* Data Release 3 (Gaia Collaboration 2016, 2023). T_{asc} is the epoch of the ascending node of the pulsar in the Barycentric Dynamical Time (TDB) system. P_b is the orbital period. 1σ uncertainties on the final digits of the orbital parameters are quoted in parentheses. The DM columns represent the predicted DMs along these lines of sight at the distances estimated from previous studies, according to the NE2001 (Cordes & Lazio 2002) and YMW16 (Yao, Manchester & Wang 2017) Galactic electron density models.

4FGL name	R.A. (J2000)	Decl. (J2000)	T_{asc} (MJD)	P_b (d)	d (kpc)	DM _{NE2001} (pc cm ⁻³)	DM _{YMW16} (pc cm ⁻³)	DM _{search} (pc cm ⁻³)	References
J0523.3–2527	05 ^h 23 ^m 16 ^s .925	–25°27′36″.92	56577.3184(37)	0.688135(3)	2.24	40, 50 ^a	33, 52 ^a	100	Strader et al. (2014)
J0838.7–2827	08 ^h 38 ^m 50 ^s .418	–28°27′56″.97	57781.2524(8)	0.214523(5)	1.70	117, 238 ^a	242, 344 ^a	250	Halpern et al. (2017b)
J0940.3–7610	09 ^h 40 ^m 23 ^s .787	–76°10′00″.13	58525.37263(172)	0.270639(7)	2.00	63, 110 ^a	85, 137 ^a	250	Swihart et al. (2021)
J0955.3–3949	09 ^h 55 ^m 27 ^s .809	–39°47′52″.30	58097.44433(53)	0.387339(8)	1.70	88, 184 ^a	217, 280 ^a	350	Li et al. (2018)
J1120.0–2204	11 ^h 19 ^m 58 ^s .309	–22°04′56″.33	59306.616(31)	0.630398(27)	1.00	24, 50 ^a	28, 50 ^a	60	Swihart et al. (2022a)
J2333.1–5527	23 ^h 33 ^m 15 ^s .968	–55°26′21″.11	58463.46881(65)	0.287645(1)	3.10	34, 35 ^a	21, 23 ^a	70	Swihart et al. (2020)

^aRepresents the maximum predicted DM along the lines of sight from both models. DM_{search} are the DM ranges that we used for searching.

versus arcminute uncertainties), thus allowing one to position the radio beam directly at the right location to avoid sensitivity losses that arise towards the edge of the beam. This is particularly crucial for MeerKAT observations, where hundreds of coherent tied-array beams with widths of a few arcsecs are required to tile the error box of an unassociated *Fermi* source (which typically have widths measured in arcminutes), with typical sensitivity losses of around 50 per cent occurring mid-way between beams. The ensuing search for radio pulsations can also be operated on a smaller data set, which opens possibilities for longer pointings and searching at higher accelerations when processing resources are limited, as they are for regular TRAPUM observations. Finally, the optical observations also provide an approximate orbital period and reference phase for the system, which in turn can be used to schedule the radio searching to occur around the inferior conjunction of the pulsar when it is least likely to be eclipsed.

In this paper, we expand the quest to find more spider pulsars by focusing on six *Fermi* unidentified gamma-ray sources, which have been found to have possible counterparts with redback-like optical light curves and/or modulated X-rays. Since these systems are likely to harbour a radio pulsar, we conducted a deep survey of these targets with the MeerKAT telescope, combining observations made at *L* band and Ultra High Frequency (UHF). The structure of the paper is as follows. Section 2 presents the survey strategy and targets. Section 3 reports on the discoveries, gamma-ray searches and timing. Section 4 discusses the characteristics of the discovered pulsars. Section 5 draws some conclusions and summarizes the work.

2 SURVEY AND OBSERVATION

The MeerKAT telescope is an interferometer array that contains 64 radio dishes with a diameter of 13.5 m. Located in the Karoo, a desert region in the Northern Cape province of South Africa, MeerKAT is the most sensitive telescope operating at centimetre wavelengths in the Southern hemisphere. The location was chosen due to its low population density. Consequently, the site is only affected by very low levels of radio frequency interference (RFI) and is high quality for radio astronomy (Booth et al. 2009). At the time the survey was conducted, two receivers were available: an *L*-band receiver operating between 856 and 1712 MHz, and a UHF receiver operating between 544 and 1088 MHz (see Jonas & MeerKAT Team 2016, for more technical information).

Six targets have been observed as part of this survey (see Table 1). Multiwavelength observations indicated they are very likely redback pulsar binaries. The *Fermi*-LAT detected point sources in the direction of these sources that are not clearly associated to other

known objects (Abdollahi et al. 2020). Optical and X-ray searches of the few arcminute localization regions were conducted to shed light on their nature, and identified optical and/or X-ray counterparts with light curves displaying the typical orbital periodicity of redback systems (e.g. Halpern, Strader & Li 2017b; Li et al. 2018; Swihart et al. 2020). The variability in the optical data can have either two maxima per orbital cycle, due to tidal distortion of the companion star, or one maximum per cycle if the pulsar’s irradiation of the inner facing hemisphere of the companion star causes a large temperature difference. The X-ray modulation, on the other hand, is caused by an intra-binary shock and displays a double-peak pattern due to the emission from particles accelerated to high Lorentz factors along the shock boundary. Mass estimates derived from the projected radial velocity curve of the companions obtained from optical spectroscopy further indicate that these systems contain an unseen primary object with a mass compatible with that of a neutron star though no pulsations have been reported from these candidates until now (e.g. Rea et al. 2017; Strader et al. 2019).

In light of the strong evidence provided by the combination of gamma-ray, X-ray, and optical data, there is a very high likelihood that all six targets are redback binaries that harbour a millisecond radio pulsar. Some of these sources have been targeted several times in radio pulsation searches with other telescopes without success (e.g. Camilo et al. 2015). These non-detections could be due to the intrinsic faintness of the pulsars, but are may also be due to the eclipsing nature of these redback systems, many of which are only sporadically detectable (e.g. PSR J0212+5321 has been detected only twice despite years of searching; Perez et al. 2023). Therefore, we decided to pursue a deep radio search with MeerKAT in an attempt to detect radio pulsations from the pulsars that they may host.

2.1 Targeted sources/ Redback Candidates

2.1.1 4FGL J0523.3–2527

Strader et al. (2014) suggested that this LAT source is a new probable gamma-ray pulsar binary. This system has one of the largest inferred companion masses among known or candidate redbacks (Strader et al. 2019), with a companion mass between 0.8 and 1.3 M_{\odot} assuming a neutron star mass in the range of 1.4–2.0 M_{\odot} . The companion has been classified as a late G or early K star using optical spectroscopy (Strader et al. 2014). In addition to the projected radial velocity amplitude, rotational broadening was measured from the optical spectral lines, thus enabling a direct estimate of the mass ratio ($q = 0.61 \pm 0.06$) leading to the above companion mass estimate. The radial velocity measurement also shows evidence of

eccentricity ($e = 0.04$) which would be the largest known in a reback system. Later, Halpern, Perez & Bogdanov (2022) reported the most luminous optical and X-ray flares seen in a non-accreting pulsar so far. Previous attempts to find radio pulsations from this source have been unsuccessful (Guillemot et al. 2012; Petrov et al. 2013).

2.1.2 4FGL J0838.7–2827

4FGL J0838.7–2827 was identified as a high-confidence MSP candidate following an optical and X-ray spectral study, but with an unknown orbital period due to the limited duration of the observations (Rea et al. 2017; Halpern, Bogdanov & Thorstensen 2017a). The likely reback nature was confirmed later from improved photometry and spectroscopy, with the optical companion being a low-mass M dwarf star in a 5.15 h orbit around an unseen primary with a mass consistent with a neutron star (Halpern et al. 2017b). Flaring was detected similar to that seen in transitional MSPs, though the X-ray and gamma-ray luminosities suggest it is a non-accreting MSP binary (Halpern et al. 2017a, e.g. $L_{\text{X-ray}} \sim 10^{31} \text{erg s}^{-1}$ versus $L_{\gamma} \sim 10^{33} \text{erg s}^{-1}$). The gamma-ray flux also shows no significant variability indicative of a transition over the 14-yr *Fermi*-LAT data set (Ballet et al. 2023). The optical spectrum shows variable H α emission, which is believed to come from the wind driven by the heated side of the companion as the emission line is too broad to be chromospheric in origin (Halpern et al. 2017b). Finally, The Australia Telescope Compact Array observations of the field put a 3σ upper limit of $\sim 20 \mu\text{Jy}$ at 5.5 and 9 GHz on the presence of a point source (Rea et al. 2017).

2.1.3 4FGL J0940.3–7610

4FGL J0940.3–7610 was proposed as a reback candidate by Swihart et al. (2021) based on the discovery of a variable optical and X-ray counterpart to the *Fermi* point source. The optical light curve displays both ellipsoidal variations and irradiation with amplitudes typical of reback systems, with an orbital period of 6.5 hours. Orbital phase-resolved spectroscopy and modelling of the light curve suggest a lower mass neutron star ($1.2\text{--}1.4 M_{\odot}$) and higher mass companion ($M_c \gtrsim 0.4 M_{\odot}$) compared to what is typically seen in rebacks, however, without a pulsation detection or a reliable ephemeris to constrain the binary mass ratio, these values remain uncertain (see Section 4.4 for further discussion). The model favours an edge-on orbit that suggests radio eclipses are very likely to occur in this system. Camilo et al. (2015) performed a radio observation for this source with Murriyang but did not detect radio pulsations.

2.1.4 4FGL J0955.3–3949

4FGL J0955.3–3949 was noted as a strong MSP candidate based on a machine-learning classification of unidentified gamma-ray sources (Saz Parkinson et al. 2016). A 9.3 h periodic optical variable was identified as a possible reback binary in the Catalina Surveys Southern periodic variable star catalogue (Drake et al. 2017), with additional evidence found by Li et al. (2018) via optical spectroscopy and X-ray variability. In addition, a 77 mJy pulsar-like radio counterpart was found by Frail et al. (2016) in the 150 MHz TGSS ADR catalogue (Intema et al. 2017), but was discarded as it lies outside the 3FGL *Fermi* localization error (Acero et al. 2015) – this source is, in fact, coincident with the optical counterpart, which lies well within the improved 4FGL localization region (Li et al. 2018). However, repeated radio follow-up observations by Camilo et al. (2015) with

Parkes, prior to the identification as a reback candidate, detected no radio pulsations, despite this source lying within the beam.

2.1.5 4FGL J1120.0–2204

4FGL J1120.0–2204 was the second brightest unclassified source in the 4FGL DR3 catalogue (Abdollahi et al. 2022). The presumed optical counterpart to the *Fermi* source, found by Swihart et al. (2022a), features a binary companion with a mass around $0.17 M_{\odot}$ in a sub-day orbital period ($P_b \sim 15.1$ h) around an unseen neutron star. As suggested by these authors, this system might be at an intermediate stage leading the companion to form an exceptionally low-mass helium white dwarf orbiting a neutron star, e.g. akin to PSR J1012+5307 (Mata Sánchez et al. 2020). Notably, optical observations have revealed a lack of variability in the system’s behaviour, suggesting the orbit might be seen with a face-on orientation. Furthermore, 4FGL J1120.0–2204 displays a lower X-ray luminosity when compared to most reback systems. While it may not fit the conventional criteria for a reback candidate, its exceptional properties have led us to include 4FGL J1120.0–2204 in our survey, recognizing its importance for binary evolution and bridging the gap between spider and white dwarf pulsar systems.

No radio pulsar has been detected within this system despite extensive radio searches conducted with various telescopes, including Effelsberg (Barr et al. 2013), GMRT (Bhattacharyya et al. 2021) and unpublished PSC searches with Parkes and GBT, while Hui et al. (2015) inspected nearby radio sources from two catalogues, the Molonglo Sky Survey (Bock, Large & Sadler 1999) and the NRAO VLA Sky Survey (Condon et al. 1998).

2.1.6 4FGL J2333.1–5527

Our final candidate, 4FGL J2333.1–5527, exhibits an orbital period of approximately 6.9 h and features a companion in a nearly edge-on orbit (Swihart et al. 2020). The detection of a significant gamma-ray eclipse confirms this picture (Clark et al. 2023a). Optical photometry reveals a typical reback light curve, while optical spectroscopy indicates the presence of a mid-K type companion. Furthermore, the study suggests that the neutron star mass in this system likely exceeds $1.4 M_{\odot}$, but it remains poorly constrained. No previous radio observations of 4FGL J2333.1–5527 have been published.

2.2 Survey configuration

We designed our campaign to observe each target for one hour as this integration time should provide a significant sensitivity improvement over previous efforts, yet a duration between 5 and 20 per cent of the orbital periods means that pulsations can still be recovered from a search of the full time series, using only one or two derivatives to account for the orbital motion, i.e. the so-called acceleration (Johnston & Kulkarni 1991) and jerk searches (Andersen & Ransom 2018), respectively. Each target was observed twice at both *L* band and UHF. These two bands provide complementary information; on the one hand, pulsars often display steep radio spectra which favour low-frequency observations (Jankowski et al. 2018), while on the other hand, radio eclipses tend to be shorter and less opaque at higher frequencies (e.g. Polzin et al. 2020). Similarly, repeated observations can help mitigate effects such as scintillation due to the scattering of the pulse in the interstellar medium (e.g. Camilo et al. 2015). Repeats avoid eclipses due to slightly different orbital phase coverage, and because eclipses, especially in their non-central

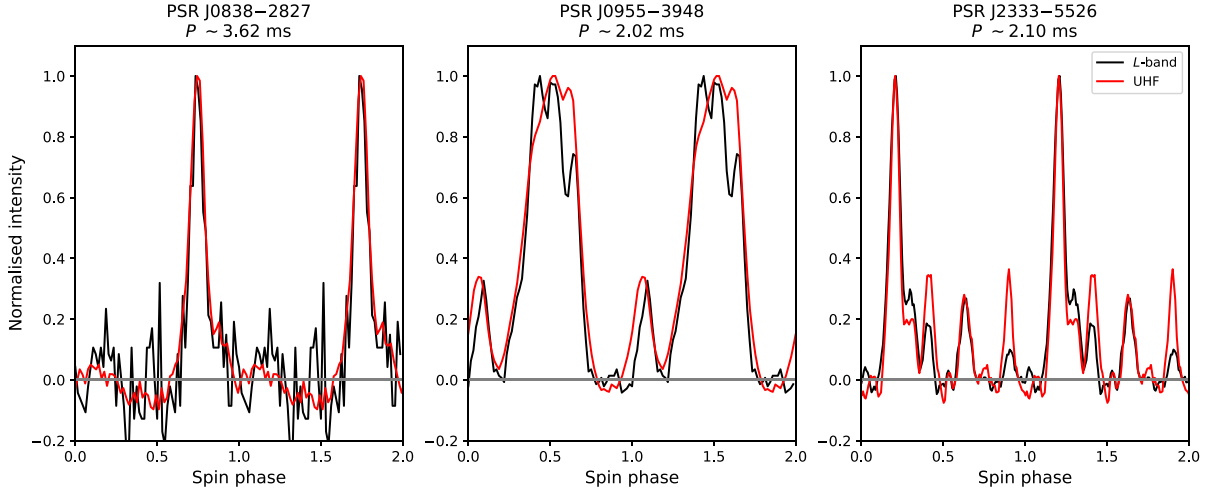


Figure 1. Pulse profiles of the three newly discovered redback pulsars at *L* band and UHF. The horizontal axis displays the spin phase of each source, replicated for clarity, while the vertical axis depicts the intensity, normalized to the peak value. The grey line presents the background level, calculated as the median of the off-pulse region. Since the gamma-ray ephemerides do not perfectly fold radio data to perform an absolute alignment, we aligned the *L* band (black) and the UHF (red) profiles using a cross-correlation.

part, vary greatly. Finally, our knowledge of the orbital periods from optical follow-up lets us plan observations when the pulsar is nearer inferior conjunction (i.e. between phases 0.5–1.0 in the pulsar timing convention) where it is less likely to be eclipsed.

Note that 4FGL J1120.0–2204 is an exception to the above strategy due its late addition to the list. We have only collected data from one epoch at each frequency at the time of writing this paper.

All 64 dishes were requested for our observations to maximize sensitivity. However, the number of dishes varied from one observation to another depending on the availability at that time (see Tables A1 and A2). Given that the optical counterparts provide accurate source positions, we could point a single tied-array beam at the candidates without worrying about beam size. We recorded the data using 4096 frequency channels and a time resolution of 38 and 60 μ s at *L* band and UHF, respectively. This combination of frequency and time resolution maximizes fast MSP detectability and mitigates the effect of the unknown dispersion measure (DM) along the line of sight, which can smear pulses within single channels, a particularly detrimental effect at short spin periods.

2.3 Search tools and acceleration search

We employed three software packages: PRESTO¹, PULSAR_MINER,² and SPIDER_TWISTER³. PRESTO (Pulsar Exploration and Search TOolkit) is software for analysis and pulsar searching (Ransom, Cordes & Eikenberry 2003). PULSAR_MINER is a PYTHON-based pipeline that automates all the steps of a PRESTO-based acceleration/jerk search (DDp1an for DM steps, de-dispersion, searching, candidate filtering and folding), while SPIDER_TWISTER automatically searches in orbital phase with several trials of epoch of ascending node, T_{asc} , to find the value that produces the highest signal-to-

noise folded result using a preliminary ephemeris as a starting point.

In PRESTO the acceleration search range is parametrized by z , the (dimensionless) number of Fourier bins that a signal is smeared over due to orbital motion. This is related to the pulsar’s acceleration,

$$a = \frac{zc}{hft_{obs}^2} \quad (1)$$

where f is the pulsar’s fundamental spin frequency, c is the speed of light, T is the observation duration, h is the harmonic number (such that the fundamental harmonic has $h = 1$), and a is the acceleration. A similar dimensionless parameter, w , quantifies the frequency smearing due to jerk, which is the first time derivative of the acceleration (Andersen & Ransom 2018):

$$\dot{a} = \frac{wc}{hft_{obs}^3}. \quad (2)$$

Searching a range of non-zero jerks provides additional sensitivity to short period binaries (in the range $T \approx 0.1P_b$ to $T \approx 0.2P_b$), but requires more computational power than a pure acceleration search. In our study, we performed acceleration searches up to $z = 200$ for all targets, and jerk searches up to $w = 600$ for those with no clear detections in the acceleration search. Assuming a typical MSP spin period ($p = 2$ ms), these searches cover accelerations of 9.26 m s^{-2} , 37.03 m s^{-2} , and 333.33 m s^{-2} for 1 h, 30 min, and 10 min segments, respectively. We then calculated the maximum acceleration of 15 redbacks using the orbital parameters provided in Strader et al. (2019). Consequently, we found that the highest maximum acceleration from these 15 sources is 26 m s^{-2} while the mean and the median are 11 m s^{-2} and 8 m s^{-2} , respectively. We also limited the range of DMs to search by taking the larger of the maximum values predicted by the NE2001 (Cordes & Lazio 2002) and YMW16 (Yao et al. 2017) models along the line of sight with extra ranges (see Table 1) for each target.

3 RESULTS

Out of the six redback candidates we searched, we discovered a radio millisecond pulsar in three of them: PSRs J0838–2827, J0955–3947

¹<https://github.com/scottransom/presto>

²https://github.com/alex88ridolfi/PULSAR_MINER

³https://github.com/alex88ridolfi/SPIDER_TWISTER

and J2333–5526 in 4FGL J0838.7–2827, 4FGL J0955.3–3949, and 4FGL J2333.1–5527, respectively. All of them have been discovered at L band in 2021. Fig. 1 shows their pulse profiles at L band and at UHF. Accordingly, three new MSPs have spin periods of $P \sim 3.6$, 2.0, and 2.1 ms, with accelerations ($a \sim 13.6$, 10.8, and 17.0 m s^{-2}) demonstrating their binary nature. Further observations (see below) confirmed that their orbital periods are consistent with the optical counterparts. The spin periods are right in the range expected for reback systems, where most pulsars in these systems are found with $P \lesssim 5$ ms (Strader et al. 2019).

Following these discoveries we searched archival observations from Murriyang Parkes and Green Bank telescopes that were accessible to us for the three new pulsars. Knowing the DM and the pulse period, and later having a partial timing solution, enabled us to detect all of them in a number of observations, with non-detections generally believed to result from eclipses or scattering (see Section 3.4). Full details of the epochs and phase coverage for the four 1 h observations and 5 min timing campaign observations conducted with MeerKAT as well as ancillary data obtained from other facilities are provided in Table A1. Examples of the discovery, the archival data and the detection with eclipses are shown in Figs 2, 3, and 4, respectively.

3.1 Timing

We undertook timing campaigns for each newly detected pulsar to obtain long-term phase-connected timing solutions that precisely describe their spin and orbital properties. These observations were performed at MeerKAT, using the Pulsar Timing User Supplied Equipment (PTUSE) backend (Bailes et al. 2020), with the 64 m Murriyang Parkes telescope, using the Ultra Wide-Frequency Low (UWL) receiver (Hobbs et al. 2020) and the Medusa Backend (see section 3.1 of Hobbs et al. 2020), and, for the northernmost and more elusive PSR J0838–2827, also the Nançay Radio Telescope (NRT) located in France.

Initially, we adopted a pseudo-logarithmic cadence strategy using the Parkes telescope (as time to follow up these sources at MeerKAT was granted at a later time), with one or two observations taken on the first day, followed by single observations on the second, fifth, tenth days, and so on. Typically, these observations lasted 1–2 h, depending on the target and, in case of a detection, provided one to four times-of-arrival (ToAs).

While PSR J0955–3949 was always detected, PSR J2333–5526 was successfully detected more sporadically and PSR J0838–2827 was never seen in our early UWL Parkes data, despite being visible in two archival observations obtained with a less sensitive backend. In October 2023, we then detected it again five times with Parkes.

A second pseudo-logarithmic campaign was hence carried out at MeerKAT on these two latter pulsars, with multiple 5 min observations taken on day 1, followed by single observations in the following days as described above. These allowed us, in the case of PSR J2333–5526, to get a good enough initial orbital solution, as described below, to properly fold previous Parkes data and, in some cases, recover the signal. PSR J0838–2827 remained undetected in our MeerKAT timing campaign until one detection was made in each of 2023 August, September, and October.

To follow up the sources over longer time-scales, we continued our timing campaign with approximately monthly observations using the Parkes telescope and NRT.

We used the optical constraints given in Table 1 as starting points for solving the orbits and fitting a circular orbit model (using PRESTO’s `fit_circular_orbit.py`) to the best-fitting spin

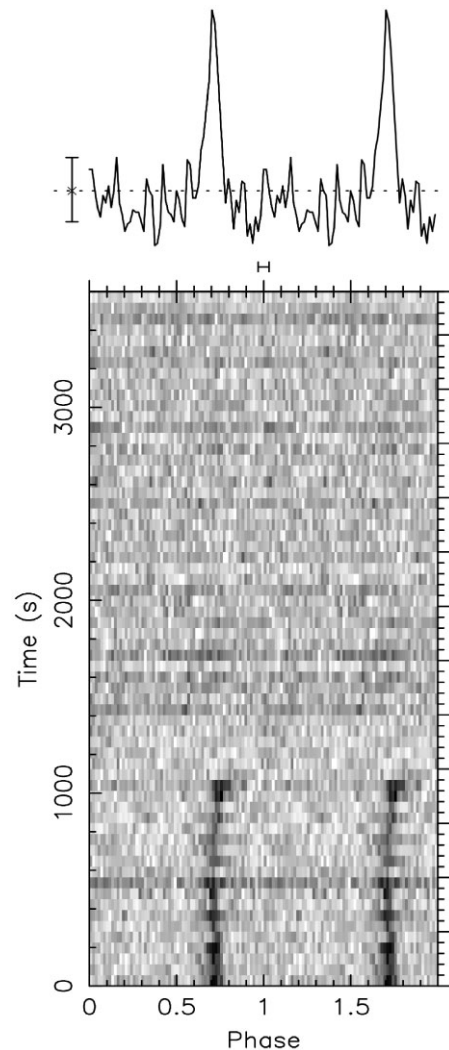


Figure 2. Discovery observation of PSR J0838–2827, with the folded pulse profile summed over frequency and time at the top, and the folded pulse profiles summed in frequency, but with subintegrations running on the vertical axis at the bottom. The pulse cycle is replicated twice for clarity. In this L -band observation dispersed at $DM = 80.55 \text{ pc cm}^{-3}$, the pulsations are clearly detected at the start before fading into a total eclipse around 1000 s after the start. The pulse phase is also seen shifting due to the additional electron column density from the eclipsing medium increasing the DM temporarily.

frequency in each observation to obtain an initial estimate for the pulsar’s orbital semimajor axis and to improve upon the optical estimates for P_b and T_{asc} . After obtaining an acceptable initial orbit, we used `Dracula`⁴ (Freire & Ridolfi 2018) to determine the global rotation count of these pulsars and derive fully phase-connected timing solutions. Several orbital frequency derivatives needed to be added at this stage to obtain flat timing residuals with a reduced chi-square close to one and account for variations in the orbital period, a behaviour commonly seen in reback binaries (e.g. Pletsch & Clark 2015; Deneva et al. 2016).

Phase-connected radio timing solutions were obtained in this way for two of the three pulsars, PSRs J0955–3947 and J2333–5526 (see Table 2). We used these as a basis to obtain a longer term timing solution from the *Fermi*-LAT gamma-ray data in Section 3.2.

⁴<https://github.com/pfreire163/Dracula>

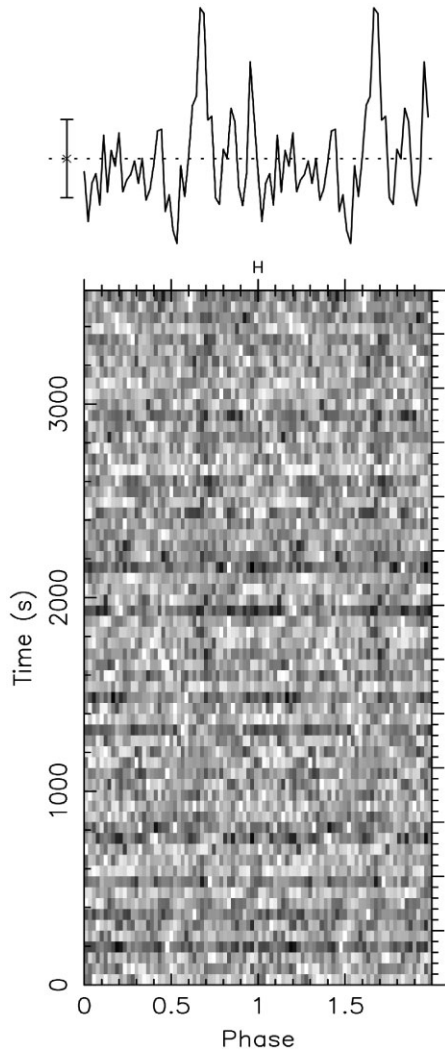


Figure 3. Archival Parkes data of PSR J0838–2827 folded using the timing parameters from MeerKAT (panels are as explained in Fig. 2). A weak pulse can be seen later in the observation starting approximately 1500 s into the observation after coming out of an eclipse.

PSR J0838–2827 has only been detected 14 times (see Section 3.4 and Fig. 5). Due to the long time separation of PSR J0838–2827 between 2021 data and 2023 data, it was impossible to obtain a phase-connected timing solution covering all radio data. Therefore, we used only observations in 2023 for radio timing to create a starting point for gamma-ray timing (see Section 3.2) for this source.

3.2 Gamma-ray pulsation searches and timing

We used the radio timing solutions obtained in Section 3.1 to search for gamma-ray pulsations from each new pulsar in the *Fermi*-LAT data. We analysed SOURCE-class events using the ‘Pass 8’ P8R3_SOURCE_V3 instrument response functions (Atwood et al. 2013; Bruel et al. 2018). We included photons according to the energy-dependent cuts that are described in table 1 of Abdollahi et al. (2022). We used the `gtsrcprob` tool and the 4FGL-DR3 (Abdollahi et al. 2022) spectral and spatial models, with the `gll_iem_v07.fits` Galactic interstellar (Acero et al. 2016) and `iso_P8R3_SOURCE_V3_v1.txt` isotropic diffuse models, to assign weights representing the probability of each photon being

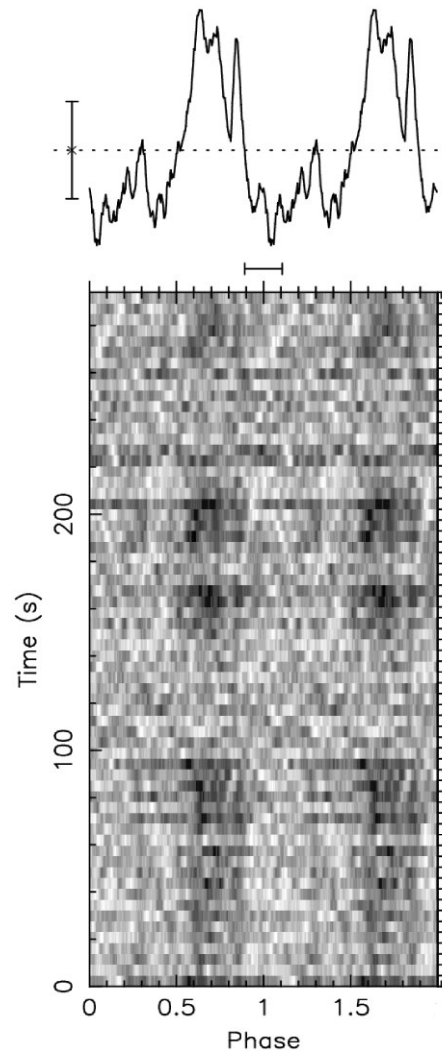


Figure 4. A 5-min MeerKAT *L*-band timing observation of PSR J0955–3947, beginning at orbital phase 0.05 (panels are as explained in Fig. 2). Short eclipses can be seen throughout the observation around 100–140 s and 220–260 s.

emitted by the pulsar (Kerr 2011), as opposed to nearby point sources or the diffuse background.

Significant gamma-ray pulsations, with weighted H-test values (Kerr 2011) of $H = 71$ and $H = 45$ were detected from PSRs J0955–3947 and J2333–5526, respectively, within the validity period of the preliminary radio timing ephemerides. However, these timing solutions did not reveal pulsations in earlier *Fermi*-LAT data. This is because the radio timing ephemerides for these pulsars begin at our discovery epochs, and contain several orbital frequency derivatives describing the orbital phase variations over time, and this Taylor series model extrapolates poorly to earlier times. For PSR J0838–2827, the initial radio ephemeris did not cover enough *Fermi*-LAT data to reveal significant pulsations, but it did provide precise measurements of the pulsar’s semimajor axis, and ascending node epoch. With these values fixed, and astrometry fixed at the *Gaia* DR3 values for the companion star, we performed a search over the spin frequency, spin-down rate and orbital period. This led to a significant detection with $H = 78$, but the pulse profile was unclear in some parts of the data, again indicative of orbital phase variations not accounted for in our initial timing model.

Table 2. Timing solutions for the newly discovered millisecond pulsars. Timing parameter values are from gamma-ray timing, described in Section 3.2 using priors on astrometry parameters from *Gaia*, and the radio timing value as a prior on A_1 .

Parameter	PSR J0838–2827	PSR J0955–3947	PSR J2333–5526
Timing parameters			
RA, α (J2000)	08 ^h 38 ^m 50 ^s .41814(1)	09 ^h 55 ^m 27 ^s .808690(6)	23 ^h 33 ^m 15 ^s .96760(2)
Dec., δ (J2000)	–28°27′56″.9729(3)	–39°47′52″.2931(1)	–55°26′21″.1056(4)
Proper motion in α , $\mu_\alpha \cos \delta$ (mas yr ^{–1})	1.5(3)	–9.0(1)	0.6(3)
Proper motion in δ , μ_δ (mas yr ^{–1})	–12.3(3)	6.1(1)	–3.2(4)
Parallax, ϖ (mas)	0.43(40)	0.27(13)	–0.37(52)
Reference epoch for astrometry (MJD)	57 388	57 388	57 388
Dispersion measure, DM (pc cm ^{–3})	80.656	130.711	19.925
Spin frequency, f (Hz)	276.59755044807(9)	494.38228117783(3)	475.63324237057(1)
Spin-down rate, \dot{f} (Hz s ^{–1})	$-7.98(1) \times 10^{-16}$	$-9.3203(2) \times 10^{-15}$	$-1.7647(2) \times 10^{-15}$
2nd spin frequency derivative, \ddot{f} , (Hz s ^{–2})	$5(4) \times 10^{-26}$	–	–
3rd spin frequency derivative, \dddot{f} , (Hz s ^{–3})	$-9(3) \times 10^{-34}$	–	–
4th spin frequency derivative, $f^{(4)}$, (Hz s ^{–4})	$-4(1) \times 10^{-41}$	–	–
Reference epoch for spin frequency (MJD)	57 461	59 609	57 500
Orbital period, P_b (d)	0.214522813(5)	0.3873274(1)	0.28764521(2)
Projected semimajor axis, A_1 (lt s)	0.43880(1)	1.089707(4)	0.896784(3)
Epoch of ascending node, T_{asc} (MJD)	60237.96601(7)	58335.6527(4)	57499.86418(6)
Hyperparameters of orbital phase covariance function			
Amplitude of orbital phase variations, h (s)	6^{+26}_{-2}	>60	16^{+19}_{-5}
Length scale of orbital phase variations, ℓ (d)	>200	>2000	450^{+360}_{-140}
Matérn degree, ν	>0.7	$1.40^{+0.24}_{-0.16}$	>2.2
Derived parameters			
Spin period, P (ms)	3.615361012345(1)	2.0227262142517(1)	2.10246028014350(5)
Spin period derivative, \dot{P}	$1.043(1) \times 10^{-23}$	$3.81333(7) \times 10^{-20}$	$7.8004(9) \times 10^{-21}$
Intrinsic spin-down rate, \dot{f}_{int} (Hz s ^{–1})	-6.5×10^{-16}	-9.0×10^{-15}	-1.9×10^{-15}
Spin-down power, \dot{E} (erg s ^{–1})	7.1×10^{33}	1.8×10^{35}	3.6×10^{34}
Surface magnetic field strength, B_S (G)	1.8×10^8	2.8×10^8	1.4×10^8
Light-cylinder magnetic field strength, B_{LC} (G)	3.5×10^4	3.1×10^4	1.3×10^5
Nominal distance for Doppler corrections (kpc)	1.7	3.5	3.1
Companion radial velocity, K_2 (km s ^{–1})	315(17) ^a	272(4) ^b	363(8) ^c
Inclination, i (°)	>78	<76	>78
Pulsar mass, $M_{\text{psr}} (M_\odot)$	0.93(14)	1.33(5)	2.06(13)
Companion mass, $M_c (M_\odot)$	0.13(1)	0.30(1)	0.38(2)
Mass ratio, $q = M_{\text{psr}}/M_c$	7.06(38)	4.43(7)	5.34(12)

^aHalpern et al. (2017b), ^bLi et al. (2018), ^cStrader private communication (see Section 4.4).

To obtain a gamma-ray timing solution describing the entire 15-yr *Fermi*-LAT data set, we therefore first had to search over the orbital phase, period and the first orbital period derivative as a function of time, searching for coherent pulsations in overlapping 400-day intervals covering the LAT data. The results of these ‘sliding window’ searches are shown in Fig. 6, revealing shifts in the pulsar’s ascending node time of over 100 s (for PSR J0955–3947) compared to a model with a constant orbital period.

We then used the resulting orbital-phase versus time measurements as a starting point to fit a fully coherent timing model. We used the framework introduced in Clark et al. (2021) in which we modelled the orbital phase variations as a stochastic Gaussian process, and jointly fit the parameters of the covariance function of this process along with the standard timing model parameters, and those of the template pulse profile used to evaluate the likelihood of the photon-weighted pulse profile (Kerr et al. 2015). We use a Matérn covariance function, parametrized by an amplitude (h), length scale (ℓ), and ‘smoothness’ (ν) hyperparameters. A process whose covariance function has these parameters has a smoothly broken power-law power spectral density, which is flat below a cut-off frequency $\propto \ell^{-1}$, turning over to a power law with spectral index $\gamma = -(2\nu + 1)$.

To make this procedure tractable, the method described in Clark et al. (2021) approximates the spin-phase likelihood function for each photon as a Gaussian, but we found that this approximation

does not work well for fainter pulsars, or those with larger orbital phase variations. We therefore modified this procedure, using a Gibbs sampling method to deal with the multimodal pulse profile. In this method, each photon is randomly assigned, according to its weight and an initial timing model, to either a single Gaussian pulse profile component (either one of two sharp peaks or to a bridge component connecting the two) or to the unpulsed background. The timing model (including the orbital phase variation Gaussian process) can then be fit analytically using generalized least squares, given these component assignments. The component assignments can then be updated according to a random sample drawn from the resulting posterior distribution on the timing model and template parameters, and this process is then repeated to generate a Monte-Carlo chain that approximates the full joint posterior on the timing model parameters, template pulse profiles, and Gaussian process hyperparameters. In the fitting, we adopted the *Gaia* DR3 (Gaia Collaboration 2016, 2023) values and uncertainties as Gaussian priors on the astrometric parameters, and used radio timing estimates as priors on the pulsar semimajor axes. Gamma-ray timing is generally not precise enough to improve upon these measurements, with the exception of proper motion in PSR J2333–5526 and the semimajor axis of PSR J0838–2827, where the posterior uncertainties are slightly narrower. The estimated power spectral density of the orbital phase variations, and the best-

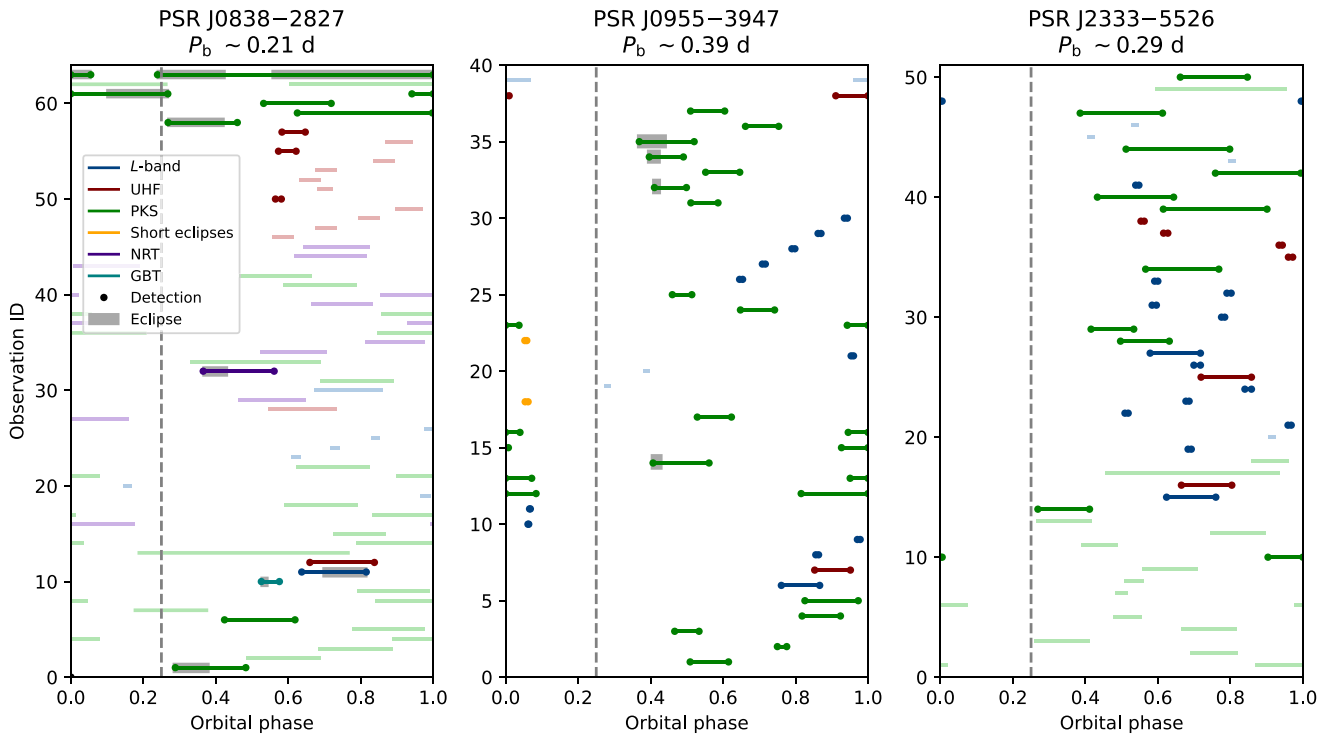


Figure 5. The orbital phase coverage of the MeerKAT *L*-band, UHF, Parkes (PKS), GBT and NRT observation. Phase 0 corresponds to the pulsar at ascending node, and phase 0.25 is superior conjunction. The colours represent observations in the following bands/telescopes: UHF (red), *L* band (blue), PKS (green), GBT (teal), NRT (purple), and *L* band with short eclipses observed (yellow). Detections are displayed by brighter colours with dots, while non-detection observations use dimmer colour without dots. The grey region is when the eclipse clearly shows up in the observation. Eclipses in *L*-band and PKS archival data are shown in Figs 2 and 3. An example of short eclipses is in Fig. 4.

fitting timing models from this procedure, are shown in Figs 6 and 7.

We checked the resulting gamma-ray timing solutions using the radio ToAs, which were generally in agreement, but revealed small residual trends (on the order of 1 per cent to 10 per cent of a rotation) that were consistent with residual variations in the orbital phase that are below the level of precision provided by the gamma-ray timing solution. Owing to these remaining residuals, we have not attempted to phase-align the radio and gamma-ray pulse profiles. A modification of the above timing procedure to jointly fit radio ToAs and gamma-ray photon arrival times would likely resolve this.

3.3 Gamma-ray eclipses

Clark et al. (2023a) detected evidence in the *Fermi*-LAT data for gamma-ray eclipses from both PSRs J0838–2827 and J2333–5526, but the eclipse properties were uncertain since no pulsar timing ephemeris was available to precisely determine the orbital period and phase parameters. No gamma-ray eclipse was detected from PSR J0955–3947. We confirm the detected gamma-ray eclipses in PSRs J0838–2827 and J2333–5526, and the non-detection for PSR J0955–3947, now using the precise gamma-ray timing solutions derived above to compute the orbital phases and to re-weight the photons according to their measured spin phase and best-fitting pulse profile template. For PSRs J0838–2827 and PSR J2333–5526, we find that the eclipse durations are 0.015–0.034 orbits, and 0.045–0.07 orbits, respectively (95 per cent confidence intervals). Using the now-known mass ratio, and assuming that the companion star fills its Roche lobe, and that there is no significant gamma-ray absorption

from intra-binary material outside the Roche lobe, this sets a lower bound on the binary inclination angle of $i > 78^\circ$ for both pulsars. For PSR J0955–3947, the eclipse non-detection implies an inclination $i < 76^\circ$ under the same assumptions.

These inclination constraints for PSRs J0955–3947 and J2333–5526 are also qualitatively consistent with the shapes of the gamma-ray pulse profiles, under the assumption that the pulsars achieved their observed spin rates through accretion from their companion stars such that their current spin axis is aligned with the orbit. For PSR J2333–5526, the two sharp peaks are very close to half a rotation apart, which is what one would expect from a gamma-ray pulsar viewed from close to the spin/binary equator (e.g. Watters et al. 2009). The narrower separation between peaks in the pulse profile for PSR J0955–3947 is similarly indicative of a more moderate viewing angle/inclination. Future modelling of the phase-aligned radio and gamma-ray pulse profiles (e.g. Johnson et al. 2014; Corongiu et al. 2021) may provide a quantitative test of these constraints, and also for PSR J0838–2827 whose broader pulse profile is somewhat more difficult to interpret.

3.4 Radio eclipses

We have detected radio eclipses in the data from PSRs J0838–2827 and J0955–3947. The orbital phase coverage of the various observations for all three new MSPs is shown in Fig. 5 so that their eclipses can be contextualized.

Radio eclipsing is often seen in spider systems as gas outflowing from the companion star can block radio pulsations for extended parts of the orbit, generally near superior conjunction of the pulsar.

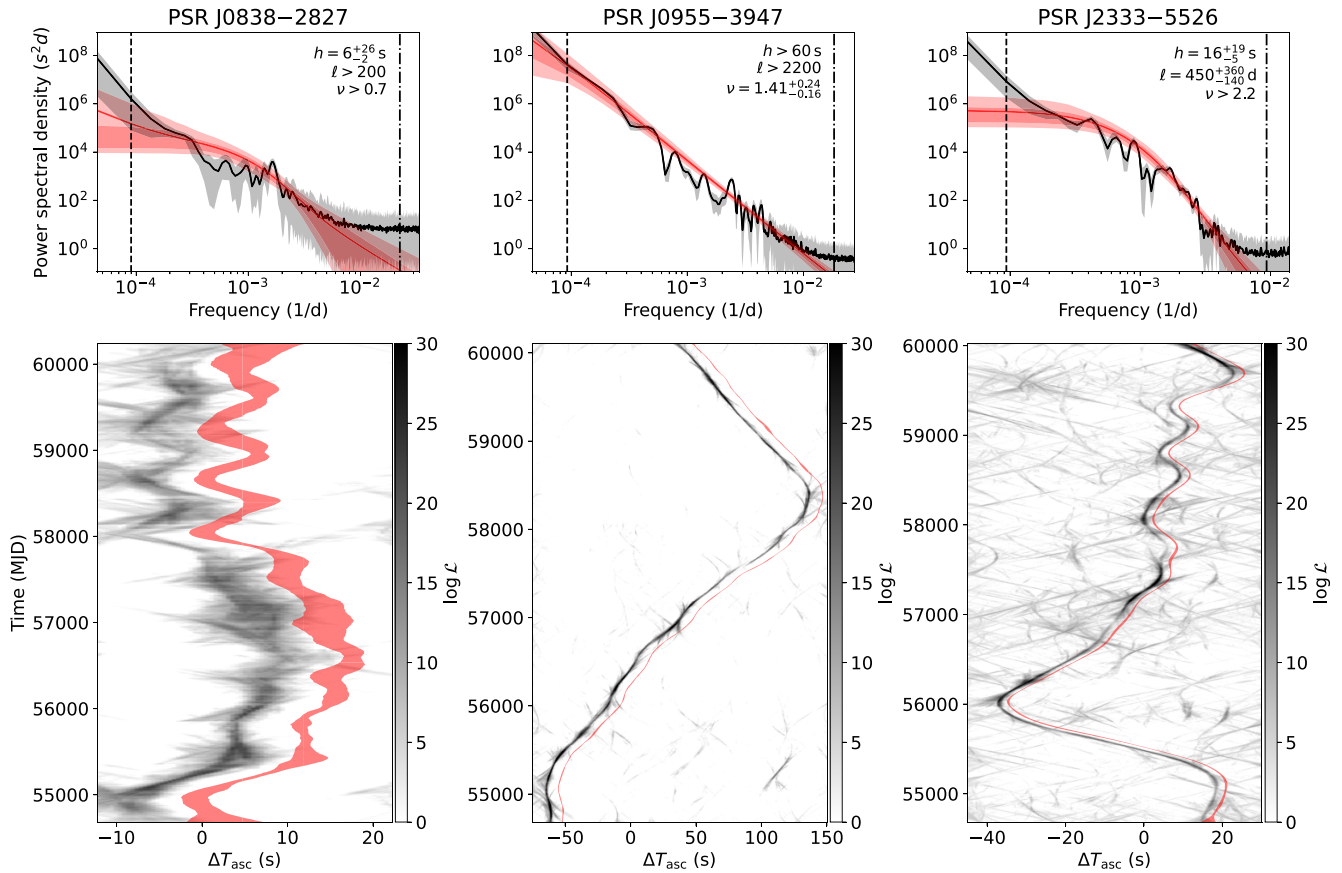


Figure 6. Orbital phase variations over the course of the *Fermi*-LAT data. Upper panels show the power spectral densities (PSD) of the orbital phase variations. Red curves and shaded regions show the PSDs of the best-fitting Matérn covariance model, and 1 and 2σ uncertainties estimated from the Monte-Carlo samples, respectively. Black curves and grey-shaded regions show the measured PSDs and their 95 per cent confidence intervals. The measured PSDs break to higher values than the Matérn models at high frequencies due to measurement uncertainties, and at low frequencies due to uncertainties caused by jointly fitting for the underlying orbital period and phase. Dashed and dot-dashed vertical lines show the minimum and maximum frequencies that were included in the timing model, respectively. Lower plots show the orbital phase variations as a function of time. The grey-scale image shows the measured pulsation log-likelihood as a function of offsets from the pulsar’s ascending node epoch, measured in overlapping 300-d intervals. Red curves show the 95 per cent confidence interval on the deviations in the pulsar’s ascending node time, obtained from the Monte-Carlo samples, with a small offset for clarity.

Synchrotron absorption is established as the primary eclipse mechanism acting in most systems (Polzin et al. 2018) and whether the pulsar disappears completely or not, depends on the radio frequency compared to the characteristic plasma frequency of the eclipsing medium (Thompson et al. 1994). Additionally, the intervening plasma causes a local increase in the dispersion measure, which is seen as a delay curving the pulse trail.

The *L*-band discovery detection of PSR J0838–2827 in 2021 February displays an eclipse ingress around 20 min into the 1 h observation followed by a total eclipse (see Fig. 2). Another observation at UHF in June 2021 shows no sign of eclipse in another 1 h long observation covering a similar range of the orbit. Since eclipses tend to last longer at lower frequencies, this clearly indicates that the medium responsible for the absorption is highly variable over time. The orbital range in which the eclipse took place, 0.7–0.8, is also unusual as this corresponds to the inferior conjunction of the pulsar (i.e. half an orbit away from where it normally happens), while NRT and Parkes timing observations show a typical eclipse around phase 0.4. An archival GBT observation covering orbital phases 0.5–0.6 also displayed a complete eclipse for part of the observation. Finally, Parkes archival data from 2017 shows a total eclipse for half of the observation in phases 0.25–0.40 (see Fig. 3).

For non-detection observations, we ran *Spider.twister* to check that the disappearances are due to a high orbital frequency derivative of the system with an inadequate preliminary ephemeris or actual eclipses. The latter seems to be the case as *Spider.twister* could not recover a pulsation from those observations.

For PSR J0955–3947, two MeerKAT observations display several short, transient eclipses lasting around 40 s near orbital phase 0.1 (see Fig. 4). These broad-band flux variations cannot be explained by interstellar scintillation, which for this pulsar would have a scintillation bandwidth of around 0.2 MHz according to NE2001 (Cordes & Lazio 2002). From the follow-up campaign, four of our Parkes observations starting close to orbital phase 0.4 show the pulsar coming out of the eclipse. While by design we have avoided observing near superior conjunction of the pulsar (phase 0.25), it appears quite likely that PSR J0955–3947 experiences ‘classic’ eclipses between phases 0.1 and 0.4, with potentially short eclipses on the ingress side.

No eclipses were detected in the case of PSR J2333–5526. This is partly due to the fact that our observing scheme was successful in avoiding the superior conjunction of the pulsar (around phase 0.25) where regular eclipses normally take place. We cannot rule out that eclipses can occur in this range; dedicated observations would

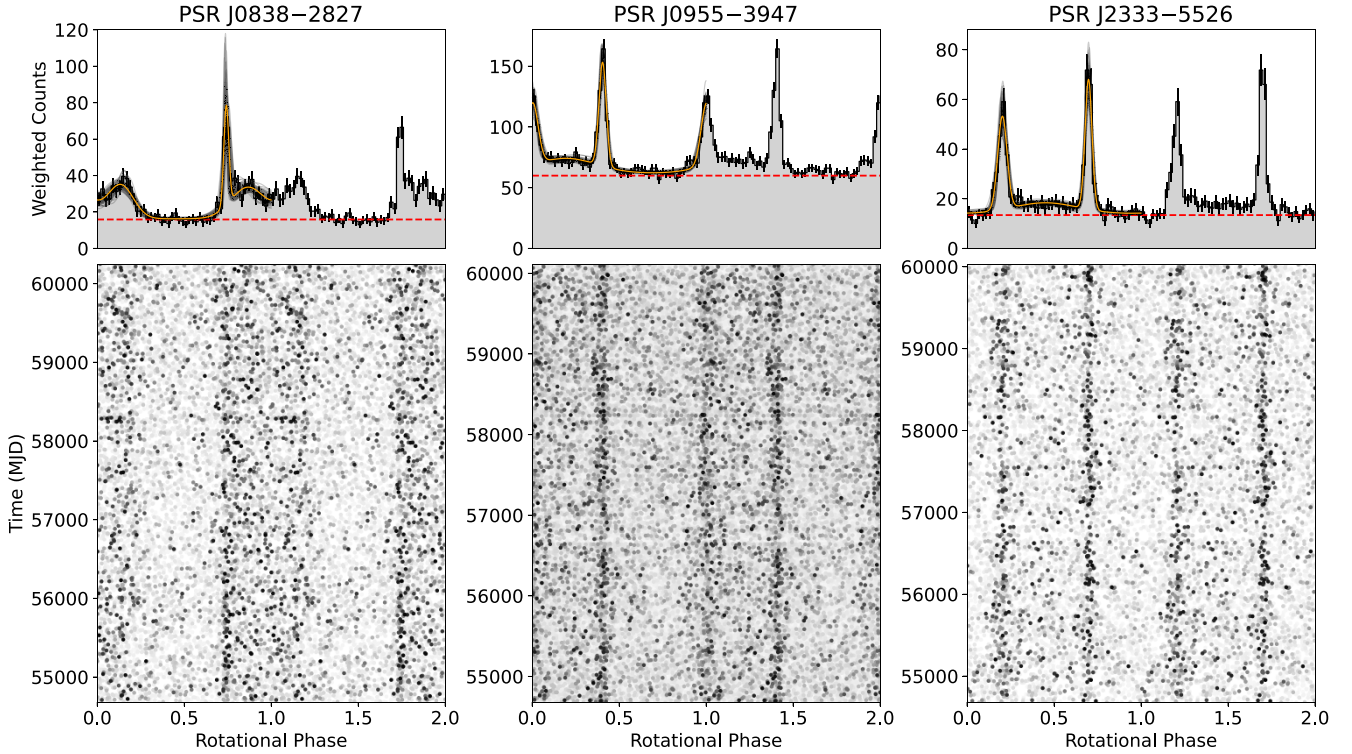


Figure 7. Gamma-ray pulsations from the three new redback MSPs. Lower panels show the weighted gamma-ray photon phases according to the best-fitting timing solution, while upper panels show the integrated pulse profile. The best-fitting template pulse profile is shown by an orange curve, with faint black curves underneath showing templates randomly drawn from the Monte-Carlo samples to illustrate the uncertainty on the template pulse profile.

be needed to investigate this. Note that this pulsar tends to exhibit very strong scintillation, which is expected given its low DM. We, therefore, conclude that scintillation is the most likely cause for the non-detection in some of the Murriyang Parkes observations, also owing to the fact that the telescope is less sensitive than MeerKAT.

4 DISCUSSION

In Section 3, we presented the discovery and timing of three new millisecond pulsars in our targeted MeerKAT searches of six high-confidence redback candidates. In this section, we discuss possible explanations for the lack of detections from the remaining three candidates and discuss the new insights into our discoveries that our pulsation detections and timing solutions provide.

4.1 Candidates without pulsation detections

We did not detect any convincing candidate pulsar signals from 4FGL J0523.3–2527, 4FGL J0940.3–7610 and 4FGL J1120.0–2204. Possibly, our non-detections are simply due to intrinsic faintness. While these candidates are all found in relatively bright gamma-ray sources (Ballet et al. 2023), pulsar radio fluxes are almost entirely uncorrelated with gamma-ray fluxes (Smith et al. 2023), and so they may yet host very faint radio pulsars. A handful of ‘radio-quiet’ gamma-ray MSPs are also known, thought to be due to emission and viewing geometries being such that their radio beams do not sweep across our line of sight (Clark et al. 2017; Smith et al. 2023). To estimate a nominal flux density upper limit for our observations, we

use the pulsar radiometer equation (Lorimer & Kramer 2004),

$$S_{\min} = \frac{S/N(T_{\text{sys}} + T_{\text{sky}})}{\beta G \sqrt{n_{\text{pol}} t_{\text{obs}} BW}} \sqrt{\frac{W}{P - W}}, \quad (3)$$

where $S/N = 9$ is the signal-to-noise ratio required for a confident detection, $T_{\text{sys}} = 22.5$ K is the system temperature, T_{sky} is the sky temperature taken from the 408 MHz all-sky map (Haslam et al. 1982; Remazeilles et al. 2015) scaling to the central frequency of 1284 MHz assuming a spectral index of -2.6 , $G = 2.8 \text{ K Jy}^{-1}$ is the gain, $n_{\text{pol}} = 2$ is the number of polarizations, $BW = 700$ and 500 MHz is the effective usable bandwidth at L band and UHF, t_{obs} is the observing time, $w = 0.15$ is the assumed fractional pulse width, and $\beta \approx 0.7$ conservatively accounts for various sources of sensitivity losses in the searching process (digitization, beamforming efficiency, incoherent harmonic summing, FFT scalloping, acceleration and DM smearing, etc.). For the 15, 30, and 60 min segments that we searched, we find conservative flux density upper limits of around 40, 30, and $20 \mu\text{Jy}$ (L band) and 60, 45, and $30 \mu\text{Jy}$ (UHF), respectively. For an assumed distance of 2.2 kpc (for 4FGL J0523.3–2527, the most distant of the unconfirmed candidates) a putative pulsar would have to have a pseudo-luminosity $L_{1400} = S_{1400} d^2$ fainter than 95 per cent of known MSPs in the ATNF Pulsar Catalogue (Manchester et al. 2005) to escape detection in our 30 min segments.

Perhaps the most likely explanation for these non-detections is that their pulsations are nearly always rendered undetectable by eclipsing intra-binary material. While we attempted to mitigate this effect by observing these systems when the pulsar was in front of the companion (at orbital phases between 0.5 and 1.0) according to the published optical ephemerides, transient eclipses are often observed in other redbacks at unexpected orbital phases (e.g. Roy,

Bhattacharyya & Ray 2014; Deneva et al. 2016), even around the pulsar’s inferior conjunction (Kudale et al. 2020), implying that material may sometimes entirely enshroud the binary systems. The recent discovery of PSR J0212+5320 (Perez et al. 2023), which was only detected in two out of five GBT observations targeting an optical reback candidate, is a particularly relevant example for our study. Our MeerKAT timing observations of PSR J0955–3947 (Fig. 4) also exhibit short (lasting around 40 s) transient eclipses at an orbital phase close to the eclipse ingress, but still outside of the eclipsing region.

Among the sources with no pulsar identified, flaring activity has been reported in the optical light curve of 4FGL J0523.3–2527, which could be a result of magnetic field reconnection events due to intra-binary material interacting with the shocked pulsar wind (Sironi & Spitkovsky 2011; Halpern et al. 2022). While our repeated observations were intended to increase our chances of detection despite the presence of transient eclipses and interstellar scintillation (e.g. Camilo et al. 2015), at least one spider binary is detectable less than 10 per cent of the time (Ray et al. 2013), and so further observations of these high-confidence targets remain warranted.

Indeed, our discovery of PSR J0838–2827 provides another extreme case of reback elusiveness. The discovery observation (Fig. 2) shows the signal disappearing due to an apparent eclipse at an orbital phase of 0.7, and following another hour-long detection at UHF in June 2021, this pulsar remained undetectable until August 2023, in spite of multiple monitoring observations. A possible low-significance detection with NRT was made half way through that period, but would have been dismissed without prior knowledge of the timing ephemeris. Observations of transient X-ray flares and optical emission lines from this system suggest that substantial material overflows the companion’s Roche lobe (Halpern et al. 2017b), providing a source of eclipsing material.

Another tantalizing explanation for our non-detections is that this pulsar may be a transitional millisecond pulsar (tMSP) that switches from a radio millisecond pulsar state to a low-mass X-ray binary (LMXB) state, as proposed by Rea et al. (2017) based on X-ray flaring activity. However, the 14-yr 4FGL-DR4 light curve shows no evidence of gamma-ray flux variability, which has been observed in the two known Galactic tMSP transitions that have occurred during the *Fermi* mission (Stappers et al. 2014; Johnson et al. 2015). Hence, while it might not classify as a full transitional MSP, PSR J0838–2827 might be a less extreme version in which the pulsar vanishes for extended periods due to material lying in the system but no accretion disc forms.

4.2 Orbital period variations

In Section 3.2, we applied the gamma-ray timing techniques introduced in Clark et al. (2021) to model the reback orbital period variations as stochastic Gaussian processes. Since this procedure has not yet been applied to the full population of *Fermi*-LAT rebacks, we do not have a lot of context in which to discuss these results. Nevertheless, the results for these three pulsars already reveal some interesting differences with respect to each other, and with PSR J2039–5617, discussed in Clark et al. (2021).

The traditional explanation for the orbital period variations commonly seen in spider binaries is the Applegate mechanism (Applegate 1992), in which variations in gravitational quadrupole moment of the companion star, perhaps driven by magnetic activity, couple with the binary orbital period (e.g. Applegate & Shaham 1994; Lazaridis et al. 2011; Pletsch & Clark 2015). Under this model, the change in the companion quadrupole moment (Q) is directly related to the

change in the orbital period, via $\Delta Q/Q \propto \Delta P_b/P_b$ (Voisin, Breton & Summers 2020), which we can estimate from the derivatives of the Gaussian process described above, with $\Delta P_b/P_b \lesssim 10^{-6}$ for all three pulsars. Following the equations in Voisin et al. (2020), and assuming an apsidal motion constant $k_2 \gtrsim 10^{-3}$, we find that $\Delta Q/Q \lesssim 2$ per cent for each case.

The spectral indices of the power spectra of the orbital phase variations are also of potential interest, as this parameter encodes information about the mechanism driving the orbital period changes. For PSR J0955–3947, we find that the orbital phase variations are well described by a pure power-law process, with a length scale, ℓ , likely to be longer than our 15-yr data set, and with Matérn degree $\nu = 1.4 \pm 0.1$. This is strikingly close to, and statistically compatible with $\nu = 1.5$ (equivalently, $\gamma = -4$), which is the expected spectral index for a random-walk process in the orbital period. This therefore implies that the star’s quadrupole moment undergoes a random walk. In contrast, for PSR J2333–5526, a smoothly broken power law is preferred, with characteristic length scale $300 \text{ d} < \ell < 800 \text{ d}$, well within the frequencies probed by our data, breaking to a steep power-law process (with $\gamma > 5$) at higher frequencies. The steeper index implies that these changes are more gradual than in PSR J0955–3947, and that there are time-varying torques (e.g. mass loss, asynchronous rotation) acting on the companion star.

In this respect, PSR J2333–5526 is much more similar to PSR J2039–5617, which has a similar characteristic length scale, and a steeply-decreasing spectrum at higher frequencies (Clark et al. 2021). The picture is less clear for PSR J0838–2827. Its lower spin frequency and smaller semimajor axis compared to the other two pulsars increase the uncertainty on the orbital phase, leading to much greater uncertainty in the hyperparameters. Here, the power spectrum could either be a pure, shallow power law like J0955–3947, or could break to a steeper power law at high frequencies, like J2333–5526.

The orbital period variations seen in PSRs J0955–3947 and J2333–5526 have a larger amplitude, and are more complicated, than those that have previously been subjected to gamma-ray timing studies (PSR J2339–0533 in Pletsch & Clark 2015 and PSR J2039–5617 in Clark et al. 2021). These pulsars required substantial improvements in our methodology to reach a satisfactory timing solution. Aside from allowing the orbital period variations in rebacks to be studied more quantitatively, our new methods also provide a possible path for bright gamma-ray rebacks to contribute to the Gamma-ray Pulsar Timing Array (γ PTA, FERMI-LAT Collaboration et al. 2022), several of which have been excluded until now due to their complicated behaviour. Both PSRs J0955–3947 and J2333–5526 have log-likelihoods above the threshold for inclusion in the γ PTA.

For PSR J0838–2827, we required four spin frequency derivatives to model the phase evolution over the *Fermi*-LAT mission. These terms are unusual for a gamma-ray MSP, where long-term red noise is all but unmeasurable in gamma-ray data for most MSPs (FERMI-LAT Collaboration et al. 2022). In one other black-widow binary, PSR J1555–2908, the presence of significant higher order spin frequency variations has been interpreted as possible evidence for a third, planetary mass object orbiting the inner binary system (Nieder et al. 2022). Further timing analyses of this pulsar as the *Fermi*-LAT mission continues may determine whether or not this timing noise is intrinsic to the pulsar.

4.3 Distances and energetics

The detection of radio pulsations from these MSPs provides knowledge of their DMs, which can be used to infer distances based

on models of the Galactic electron density content. These can be compared to distances estimates obtained from *Gaia* parallax measurements (or upper limits), and constraints from previous optical modelling.

For PSRs J0838–2827 and J0955–3947 there is significant tension between the DM-inferred distances ($d = 410$ pc and $d = 490$ pc, respectively, according to YMW16) and the lower bounds from *Gaia* DR3 parallax ($\varpi = 0.43 \pm 0.40$ mas and $\varpi = 0.27 \pm 0.13$ mas, respectively, where the 2σ upper limits correspond to minimum distances of $d = 800$ pc and $d = 1.9$ kpc, respectively). Upon closer inspection, these pulsars lie close to the edge of the Gum Nebula, perhaps indicating that the shell-shaped excess electron density added to the YMW16 model to account for this feature may be overestimated in these directions. The NE2001 model predicts larger distances for these pulsars, $d = 560$ pc and $d = 3.3$ kpc, respectively, compatible with the parallax range for PSR J0955–3947 but still not with that for PSR J0838–2827. For PSR J2333–5526, the *Gaia* DR3 parallax ($\varpi = -0.37 \pm 0.52$, for $d > 1.5$ kpc) all but rules out the NE2001 distance ($d = 860$ pc), but the YMW16 distance $d = 2.5$ kpc is plausible. For further calculations, we adopt nominal distances of: $d = 1.7$ kpc for PSR J0838–2827 (the maximum distance found by Halpern et al. 2017a to be compatible with the observed optical flux); $d = 3.5$ kpc for PSR J0955–3947 (the distance obtained by Koljonen & Linares 2023 using the *Gaia* DR3 parallax); and $d = 3.1$ kpc for PSR J2333–5526 (from optical modelling by Swihart et al. 2020).

The gamma-ray timing solutions, constrained by *Gaia* DR3 astrometry, also provide precise values for proper motion that can be used to Doppler-correct the observed spin-down rates, and therefore the spin-down energy budget, of these pulsars for the radial acceleration induced by their transverse motion, known as the ‘Shklovskii effect’ (Shklovskii 1970), and for their acceleration in the Galactic potential. For PSRs J0955–3947 and J2333–5526 these corrections are small, totalling less than 10 per cent of the observed spin-down rate, but for PSR J0838–2827 the Shklovskii component is larger, accounting for more than 20 per cent of the observed \dot{f} at $d = 1.7$ kpc. These spin-down corrections are included in the derived parameter values given in Table 2.

At our nominal distances, using the above Doppler corrections an assuming isotropic time-averaged emission, the observed gamma-ray fluxes, G_γ , from the 4FGL-DR4 catalogue (Ballet et al. 2023) correspond to gamma-ray efficiencies $\eta = 4\pi d^2 G_\gamma / \dot{E}$ of 37 per cent (PSR J0838–2827), 7 per cent (PSR J0955–3947), and 14 per cent (PSR J2333–5526), which are typical for gamma-ray MSPs (Smith et al. 2023).

Li et al. (2018) and Swihart et al. (2020) report ‘day’ temperatures of 8000 and 5700 K and ‘night’ temperatures of 5700 and 4400 K for PSRs J0955–3947 and J2333–5526, respectively. These can also be compared to the spin-down luminosity by computing the irradiation efficiency, $\epsilon = 4\pi A_1^2 (1 + q)^2 \sigma_{\text{SB}} (T_{\text{day}}^4 - T_{\text{night}}^4) / \dot{E}$ (Breton et al. 2013), where σ_{SB} is the Stefan–Boltzmann constant. We find $\epsilon \approx 40$ per cent for both pulsars, which is typical for irradiated spider binaries (e.g. Mata Sánchez et al. 2023).

4.4 Mass measurement

Our timing solutions provide precise values for the pulsars’ projected semimajor axes, A_1 , which were the missing pieces for pulsar mass measurements for these systems.

As discussed above, the presence/absence of gamma-ray eclipses constrain the binary inclination angle, i , of PSRs J0838–2827, J0955–4947 and J2333–5526, to be $i > 78^\circ$, $i < 76^\circ$, and $i > 78^\circ$, respectively.

The pulsar mass, M_{psr} , can be estimated from these parameters via the binary mass function,

$$M_{\text{psr}} \sin^3 i = P_b K_2^3 \frac{(1 + K_1/K_2)^2}{2\pi G}, \quad (4)$$

where P_b is the orbital period, $K_1 = 2\pi A_1/P_b$ is the pulsar’s projected radial velocity, K_2 is the companion radial velocity amplitude, and G is the gravitational constant. The companion radial velocities, reported in Table 2, were obtained via optical spectroscopy taken when these binary systems were first identified as candidate redbacks.⁵

We estimated pulsar masses using a Monte–Carlo technique, in which we generate 50 000 random realizations, with values for K_2 and A_1 drawn from normal distributions according to our timing solutions, and with $\cos i$ drawn from a uniform distribution (representing an isotropic distribution for the binary orbital axis), discarding values lying outside the constraints from the gamma-ray eclipse observations (e.g. requiring $i > 78^\circ$ for PSR J0838–2827). The results of these calculations are presented in Table 2. These values span a large range, from $M_{\text{psr}} = 0.93 \pm 0.14 M_\odot$ for PSR J0838–2827, to $M_{\text{psr}} = 2.06 \pm 0.13 M_\odot$ for PSR J2333–5526.

However, one significant source of systematic uncertainty in these values remains, which is the ‘centre-of-light’ adjustment to K_2 , required to correct the observed radial velocity curves to account for the effects of the large difference in surface temperature between the irradiated and un-irradiated faces of the companion star. These corrections are difficult to estimate, as they vary between different spectral lines, and depend strongly on the temperature pattern on the surface of the companion star. Swihart et al. (2020) account for this in an approximate manner for PSR J2333–5526 by producing a model of the companion star surface temperatures, and using an effective temperature–equivalent width relation for the adopted Mg b triplet to produce a ‘corrected’ model radial velocity curve, which reduces the inferred K_2 . Adopting this value, we find a lower $M_{\text{psr}} = 1.70 \pm 0.06 M_\odot$. However, this is at odds with the picture found by Kandel & Romani (2020) for the similarly-irradiated PSR J2215+5135, in which the Mg b lines only slightly underestimate the centre-of-mass velocity, suggesting that the original uncorrected value may be closer to reality. Dodge et al. (2024) find almost no centre-of-light correction is required to the velocity of the Mg b line in a similarly irradiated redback, PSR J1910–5320, with an uncertainty of around 4 per cent on the correction, suggesting a systematic uncertainty here of around 0.2–0.3 M_\odot for PSR J2333–5526.

Estimates for the centre-of-light corrections have not been made for either PSR J0838–2827 or J0955–3947. For both pulsars, radial velocities were predominantly measured from the Ca II triplet (Halpern et al. 2017a; Li et al. 2018), whose equivalent width varies little with temperature (Mallik 1997) and which will therefore track a position close to the heated face of the companion star which contributes most strongly to the observed spectra. The true centre-of-mass radial velocity amplitude will therefore be larger than observed, by up to around 20 per cent (e.g. Romani & Shaw 2011), meaning our pulsar mass estimates are better interpreted as lower bounds for these pulsars, and the true mass could be up to 60 per cent larger.

A full modelling treatment of the optical light curves and spectra (or radial velocities) (e.g. Linares, Shahbaz & Casares 2018; Kandel

⁵We discovered that the orbital phase from the gamma-ray timing ephemeris for PSR J2333–5526 disagreed with that measured from optical spectroscopy Swihart et al. (2020). This has recently been found to be due to flexure in the SOAR/Goodman spectrograph (Dodge et al. 2024). Correcting for this effect gives a revised radial velocity amplitude of $K_2 = 362.5 \pm 7.6$ km s^{−1} (Strader private communication).

& Romani 2020; Kennedy et al. 2022) will be necessary to turn our lower limits into more precise pulsar mass estimates for these systems. For PSR J0838–2827 in particular, such an effort will likely be complicated by the strong asymmetry and variability observed by Cho, Halpern & Bogdanov (2018). Nevertheless, our results are consistent with the picture from Strader et al. (2019) that rebacks tend to contain rather heavy neutron stars, and in particular the mass of PSR J2333–5526 is likely to lie towards the heavier end of this distribution.

5 CONCLUSION AND FUTURE WORK

We have presented the results from TRAPUM’s deep survey for six reback candidates using the MeerKAT radio telescope. We found pulsations from MSPs in three of these systems, thus confirming their nature as rebacks. We detected PSRs J0955–3947 and J2333–5526 in most of our search and timing observations. The data we collected enabled us to establish phase-connected timing solutions, which enabled the detection of gamma-ray pulsations and a full 15-yr gamma-ray timing solution accounting for significant stochastic variability in the orbital periods, consistent with gravitational quadrupole moment variations in the companion star.

On the contrary, PSR J0838–2827 remained undetected for 2 yr after our discovery, except for a single faint detection with NRT, until August 2023 when we started to re-detect this source with MeerKAT and Parkes. With these new detections, we could find a local phase-connected timing solution, which enabled gamma-ray timing and finding gamma-ray pulsation. We should note that PSR J0838–2827 has been reported as a possible transitional millisecond pulsar candidate (Rea et al. 2017), but gamma-ray pulsations are detectable throughout 15 yr of monitoring with the *Fermi*-LAT, with no apparent flux variations or transitions.

We used the additional orbital information derived from these discoveries to update the estimated pulsar masses in these three systems. Accordingly, PSRs J0838–2827, J0955–3947, and PSR J2333–5526 have minimum pulsar masses of 0.93 ± 0.14 , 1.33 ± 0.05 , and $2.06 \pm 0.13 M_{\odot}$.

We encourage further monitoring of PSR J0838–2827, as its elusive behaviour, flaring X-ray activity and optical emission features might all point towards future transitional behaviour between pulsar and X-ray binary-like states. Likewise, we suggest that our inability to detect pulsations in the other three candidates is likely caused by a combination of heavy eclipses and potentially faint pulsations. Further observations might eventually unravel these pulsars.

Our discovery of three reback MSPs from six gamma-ray sources that had been targeted repeatedly by other telescopes, without success, reinforces the discovery potential of MeerKAT MSP searches. A number of new spider candidates have been discovered in *Fermi*-LAT sources since we began our survey: 4FGL J0336.0+7502 (Li et al. 2021), 4FGL J0935.3+0901 (Halpern 2022), 4FGL J1408.6–2917 (Swihart et al. 2022b) contain candidate black widows while 4FGL J1702.7–5655 (Corbet et al. 2022) and 4FGL J2054.2+6904 (Karpova et al. 2023) host candidate rebacks. We have begun performing similar searches of the more southerly of these.

ACKNOWLEDGEMENTS

The MeerKAT telescope is operated by the South African Radio Astronomy Observatory (SARAO), which is a facility of the National Research Foundation, an agency of the Department of Science and Innovation. We thank staff at SARAO for their help with

observations and commissioning. TRAPUM observations used the FBFUSE and APSUSE computing clusters for data acquisition, storage and analysis. These clusters were funded and installed by the Max-Planck-Institut für Radioastronomie (MPIfR) and the Max-Planck-Gesellschaft. The National Radio Astronomy Observatory is a facility of the National Science Foundation operated under cooperative agreement by Associated Universities, Inc. The Parkes radio telescope is part of the Australia Telescope National Facility (<https://ror.org/05qajvd42>) that is funded by the Australian Government for operation as a National Facility managed by CSIRO. We acknowledge the Wiradjuri people as the traditional owners of the Observatory site. The Nançay Radio Observatory is operated by the Paris Observatory, associated with the French Centre National de la Recherche Scientifique (CNRS) and Université d’Orléans. It is partially supported by the Region Centre Val de Loire in France.

The *Fermi* LAT Collaboration acknowledges generous ongoing support from a number of agencies and institutes that have supported both the development and the operation of the LAT as well as scientific data analysis. These include the National Aeronautics and Space Administration and the Department of Energy in the United States, the Commissariat à l’Energie Atomique and the Centre National de la Recherche Scientifique/Institut National de Physique Nucléaire et de Physique des Particules in France, the Agenzia Spaziale Italiana and the Istituto Nazionale di Fisica Nucleare in Italy, the Ministry of Education, Culture, Sports, Science and Technology (MEXT), High Energy Accelerator Research Organization (KEK), and Japan Aerospace Exploration Agency (JAXA) in Japan, and the K. A. Wallenberg Foundation, the Swedish Research Council and the Swedish National Space Board in Sweden.

This work has made use of data from the European Space Agency (ESA) mission *Gaia* (<https://www.cosmos.esa.int/gaia>), processed by the *Gaia* Data Processing and Analysis Consortium (DPAC, <https://www.cosmos.esa.int/web/gaia/dpac/consortium>). Funding for the DPAC has been provided by national institutions, in particular the institutions participating in the *Gaia* Multilateral Agreement.

TT is grateful to the National Astronomical Research Institute of Thailand (NARIT) for awarding a student scholarship. RPB and CJC acknowledge support from the European Research Council (ERC) under the European Union’s Horizon 2020 research and innovation programme (grant agreement No. 715051; Spiders). MB and AP gratefully acknowledges financial support by the research grant 2022 ‘GCjewels’ (PI Andrea Possenti) and ‘FANS’ (PI Alessandro Papitto) approved with the INAF Presidential Decree 30/2022. EDB, CJC, DJC, PCCF, MK, LN, PVP, AR, and VVK acknowledge continuing valuable support from the Max-Planck Society. BWS acknowledges funding from the ERC under the European Union’s Horizon 2020 research and innovation programme (grant agreement no. 694745). SMR is a CIFAR Fellow and is supported by the NSF Physics Frontiers Center awards 2020265. FC acknowledges financial support from the ‘Agence Nationale de la Recherche’, grant no. ANR-19-CE310005-01 (PI: Francesca Calore). VVK acknowledges financial support from the European Research Council (ERC) starting grant, ‘COMPACT’ (grant agreement number 101078094), under the European Union’s Horizon Europe research and innovation programme. LV acknowledges financial support from the Dean’s Doctoral Scholar Award from the University of Manchester.

We would like to thank Philippe Bruel, Matthew Kerr, and David Smith for helpful comments on the manuscript. We also appreciate Jay Strader for revisiting the optical spectroscopy for PSR J2333–5526. TT thanks Oliver Dodge and Adipol Phosrisom for their general comments. CJC would like to thank Rutger van Haasteren for helpful discussion and advice regarding gamma-ray

pulsar timing analyses. Lastly, we appreciate the valuable comments from the anonymous reviewer.

DATA AVAILABILITY

TRAPUM data products are available upon reasonable request to the TRAPUM collaboration. The *Fermi*-LAT data are available from the *Fermi* Science Support Center (FSSC; <http://fermi.gsfc.nasa.gov/ssc>). Gamma-ray timing solutions are also available from the FSSC (<https://fermi.gsfc.nasa.gov/ssc/data/access/lat/ephems/>).

REFERENCES

- Abdo A. A. et al., 2009, *Science*, 325, 848
 Abdollahi S. et al., 2020, *ApJS*, 247, 33
 Abdollahi S. et al., 2022, *ApJS*, 260, 53
 Acero F. et al., 2015, *ApJS*, 218, 23
 Acero F. et al., 2016, *ApJS*, 223, 26
 Alpar M. A., Cheng A. F., Ruderman M. A., Shaham J., 1982, *Nature*, 300, 728
 Andersen B. C., Ransom S. M., 2018, *ApJ*, 863, L13
 Applegate J. H., 1992, *ApJ*, 385, 621
 Applegate J. H., Shaham J., 1994, *ApJ*, 436, 312
 Archibald A. M. et al., 2009, *Science*, 324, 1411
 Atwood W. B. et al., 2009, *ApJ*, 697, 1071
 Atwood W. et al., 2013, in Brandt T. J., Omodei N., Wilson-Hodge C., eds, Proceedings of the 4th Fermi Symposium, Monterey, California, 2012. eConf C121028. p. 8
 Au K.-Y. et al., 2023, *ApJ*, 943, 103
 Bailes M. et al., 2020, *PASA*, 37, e028
 Ballet J., Bruehl P., Burnett T. H., Lott B., *The Fermi-LAT collaboration*, 2023, preprint ([arXiv:2307.12546](https://arxiv.org/abs/2307.12546))
 Barr E. D. et al., 2013, *MNRAS*, 429, 1633
 Bhattacharya D., van den Heuvel E. P. J., 1991, *Phys. Rep.*, 203, 1
 Bhattacharyya B. et al., 2021, *ApJ*, 910, 160
 Bock D. C. J., Large M. I., Sadler E. M., 1999, *AJ*, 117, 1578
 Booth R. S., de Blok W. J. G., Jonas J. L., Fanaroff B., 2009, preprint ([arXiv:0910.2935](https://arxiv.org/abs/0910.2935))
 Breton R. P. et al., 2013, *ApJ*, 769, 108
 Bruehl P., Burnett T. H., Digel S. W., Johannesson G., Omodei N., Wood M., 2018, preprint ([arXiv:1810.11394](https://arxiv.org/abs/1810.11394))
 Callanan P. J., van Paradijs J., Rengelink R., 1995, *ApJ*, 439, 928
 Camilo F. et al., 2015, *ApJ*, 810, 85
 Chakrabarty D., Morgan E. H., Muno M. P., Galloway D. K., Wijnands R., van der Klis M., Markwardt C. B., 2003, *Nature*, 424, 42
 Chen H.-L., Chen X., Tauris T. M., Han Z., 2013, *ApJ*, 775, 27
 Cho P. B., Halpern J. P., Bogdanov S., 2018, *ApJ*, 866, 71
 Clark C. J. et al., 2017, *ApJ*, 834, 106
 Clark C. J. et al., 2021, *MNRAS*, 502, 915
 Clark C. J. et al., 2023a, *Nat. Astron.*, 7, 451
 Clark C. J. et al., 2023b, *MNRAS*, 519, 5590
 Condon J. J., Cotton W. D., Greisen E. W., Yin Q. F., Perley R. A., Taylor G. B., Broderick J. J., 1998, *AJ*, 115, 1693
 Corbet R. H. D. et al., 2022, *ApJ*, 935, 2
 Cordes J. M., Lazio T. J. W., 2002, preprint (astro-ph/0207156)
 Corongiu A. et al., 2021, *MNRAS*, 502, 935
 Cromartie H. T. et al., 2016, *ApJ*, 819, 34
 De Vito M. A., Benvenuto O. G., Horvath J. E., 2020, *MNRAS*, 493, 2171
 Deneva J. S. et al., 2016, *ApJ*, 823, 105
 Dodge O. G. et al., 2024, *MNRAS*, 528, 4337
 Drake A. J. et al., 2017, *MNRAS*, 469, 3688
 FERMI-LAT Collaboration, 2022, *Science*, 376, 521
 Frail D. A., Mooley K. P., Jagannathan P., Intema H. T., 2016, *MNRAS*, 461, 1062
 Freire P. C. C., Ridolfi A., 2018, *MNRAS*, 476, 4794
 Fruchter A. S., Stinebring D. R., Taylor J. H., 1988, *Nature*, 333, 237
 Gaia Collaboration, 2016, *A&A*, 595, A1
 Gaia Collaboration 2023, *A&A*, 674, A1
 Guillemot L. et al., 2012, *MNRAS*, 422, 1294
 Halpern J. P., 2022, *ApJ*, 932, L8
 Halpern J. P., Bogdanov S., Thorstensen J. R., 2017a, *ApJ*, 838, 124
 Halpern J. P., Strader J., Li M., 2017b, *ApJ*, 844, 150
 Halpern J. P., Perez K. I., Bogdanov S., 2022, *ApJ*, 935, 151
 Haslam C. G. T., Salter C. J., Stoffel H., Wilson W. E., 1982, *A&AS*, 47, 1
 Hobbs G. et al., 2020, *PASA*, 37, e012
 Hui C. Y. et al., 2015, *ApJ*, 809, 68
 Intema H. T., Jagannathan P., Mooley K. P., Frail D. A., 2017, *A&A*, 598, A78
 Jankowski F., van Straten W., Keane E. F., Bailes M., Barr E. D., Johnston S., Kerr M., 2018, *MNRAS*, 473, 4436
 Johnson T. J. et al., 2014, *ApJS*, 213, 6
 Johnson T. J. et al., 2015, *ApJ*, 806, 91
 Johnston H. M., Kulkarni S. R., 1991, *ApJ*, 368, 504
 Jonas J., Team MeerKAT, 2016, in MeerKAT Science: On the Pathway to the SKA, Stellenbosch. p. 1
 Kandel D., Romani R. W., 2020, *ApJ*, 892, 101
 Karpova A. V., Zyuzin D. A., Shibanov Y. A., Gilfanov M. R., 2023, *MNRAS*, 524, 3020
 Keith M. J. et al., 2011, *MNRAS*, 414, 1292
 Kennedy M. R. et al., 2022, *MNRAS*, 512, 3001
 Kerr M., 2011, *ApJ*, 732, 38
 Kerr M., Ray P. S., Johnston S., Shannon R. M., Camilo F., 2015, *ApJ*, 814, 128
 Koljonen K. I. I., Linares M., 2023, *MNRAS*, 525, 3963
 Kong A. K. H. et al., 2012, *ApJ*, 747, L3
 Kudale S., Roy J., Bhattacharyya B., Stappers B., Chengalur J., 2020, *ApJ*, 900, 194
 Lazaridis K. et al., 2011, *MNRAS*, 414, 3134
 Li K.-L. et al., 2018, *ApJ*, 863, 194
 Li K.-L., Jane Yap Y. X., Hui C. Y., Kong A. K. H., 2021, *ApJ*, 911, 92
 Linares M., 2020, in Multifrequency Behaviour of High Energy Cosmic Sources—XIII. 3–8 June 2019. Palermo. p. 23, preprint ([arXiv:1910.09572](https://arxiv.org/abs/1910.09572))
 Linares M., Shahbaz T., Casares J., 2018, *ApJ*, 859, 54
 Lorimer D. R., Kramer M., 2004, *Handbook of Pulsar Astronomy*. Vol. 4, Cambridge Univ. Press, Cambridge
 Mallik S. V., 1997, *A&AS*, 124, 359
 Manchester R. N., Hobbs G. B., Teoh A., Hobbs M., 2005, *AJ*, 129, 1993
 Mata Sánchez D., Istrate A. G., van Kerkwijk M. H., Breton R. P., Kaplan D. L., 2020, *MNRAS*, 494, 4031
 Mata Sánchez D. et al., 2023, *MNRAS*, 520, 2217
 Nieder L., Allen B., Clark C. J., Pletsch H. J., 2020a, *ApJ*, 901, 156
 Nieder L. et al., 2020b, *ApJ*, 902, L46
 Nieder L., Kerr M., Clark C. J., Bruehl P., Cromartie H. T., Ransom S. M., Ray P. S., 2022, *ApJ*, 931, L3
 Papitto A. et al., 2013, *Nature*, 501, 517
 Perez K. I., Bogdanov S., Halpern J. P., Gajjar V., 2023, *ApJ*, 952, 150
 Petrov L., Mahony E. K., Edwards P. G., Sadler E. M., Schinzel F. K., McConnell D., 2013, *MNRAS*, 432, 1294
 Pletsch H. J., Clark C. J., 2015, *ApJ*, 807, 18
 Pletsch H. J. et al., 2012, *Science*, 338, 1314
 Polzin E. J. et al., 2018, *MNRAS*, 476, 1968
 Polzin E. J., Breton R. P., Stappers B. W., Bhattacharyya B., Janssen G. H., Osłowski S., Roberts M. S. E., Sobey C., 2019, *MNRAS*, 490, 889
 Polzin E. J., Breton R. P., Bhattacharyya B., Scholte D., Sobey C., Stappers B. W., 2020, *MNRAS*, 494, 2948
 Radhakrishnan V., Srinivasan G., 1982, *Current Sci.*, 51, 1096
 Ransom S. M., Cordes J. M., Eikenberry S. S., 2003, *ApJ*, 589, 911
 Ransom S. M. et al., 2011, *ApJ*, 727, L16
 Ray P. S. et al., 2012, in A. M. ed., Proceedings of the 2011 Fermi Symposium, Rome, Italy. eConf C110509. p. 8, preprint ([arXiv:1205.3089](https://arxiv.org/abs/1205.3089))
 Ray P. S. et al., 2013, *ApJ*, 763, L13
 Ray P. S. et al., 2020, *Res. Notes Am. Astron. Soc.*, 4, 37
 Rea N. et al., 2017, *MNRAS*, 471, 2902

- Remazeilles M., Dickinson C., Banday A. J., Bigot-Sazy M. A., Ghosh T., 2015, *MNRAS*, 451, 4311
- Roberts M. S. E., 2012, *Proc. Int. Astron. Union*, 8, 127
- Roberts M. S. et al., 2017, *Proc. Int. Astron. Union*, 13, 43
- Romani R. W., 2012, *ApJ*, 754, L25
- Romani R. W., Shaw M. S., 2011, *ApJ*, 743, L26
- Romani R. W., Kandel D., Filippenko A. V., Brink T. G., Zheng W., 2022, *ApJ*, 934, L17
- Roy J., Bhattacharyya B., Ray P. S., 2014, *Astron. Telegram*, 5890, 1
- Saz Parkinson P. M., Xu H., Yu P. L. H., Salvetti D., Marelli M., Falcone A. D., 2016, *ApJ*, 820, 8
- Shklovskii I. S., 1970, *Soviet Ast.*, 13, 562
- Sironi L., Spitkovsky A., 2011, *ApJ*, 741, 39
- Smith D. A. et al., 2023, *ApJ*, 958, 191
- Stappers B. W. et al., 2014, *ApJ*, 790, 39
- Strader J., Chomiuk L., Sonbas E., Sokolovsky K., Sand D. J., Moskvitin A. S., Cheung C. C., 2014, *ApJ*, 788, L27
- Strader J. et al., 2019, *ApJ*, 872, 42
- Swihart S. J. et al., 2020, *ApJ*, 892, 21
- Swihart S. J., Strader J., Aydi E., Chomiuk L., Dage K. C., Shishkovsky L., 2021, *ApJ*, 909, 185
- Swihart S. J., Strader J., Aydi E., Chomiuk L., Dage K. C., Kawash A., Sokolovsky K. V., Ferrara E. C., 2022a, *ApJ*, 926, 201
- Swihart S. J., Strader J., Chomiuk L., Aydi E., Sokolovsky K. V., Ray P. S., Kerr M., 2022b, *ApJ*, 941, 199
- Thompson C., Blandford R. D., Evans C. R., Phinney E. S., 1994, *ApJ*, 422, 304
- Voisin G., Breton R. P., Summers C., 2020, *MNRAS*, 492, 1550
- Wang P. et al., 2021, *Sci. China Phys. Mech. Astron.*, 64, 129562
- Watters K. P., Romani R. W., Weltevrede P., Johnston S., 2009, *ApJ*, 695, 1289
- Wijnands R., van der Klis M., 1998, *Nature*, 394, 344
- Yao J. M., Manchester R. N., Wang N., 2017, *ApJ*, 835, 29
- Zhang C. M. et al., 2011, *A&A*, 527, A83

SUPPORTING INFORMATION

Supplementary data are available at *MNRAS* online.

suppl_data

Please note: Oxford University Press is not responsible for the content or functionality of any supporting materials supplied by the authors. Any queries (other than missing material) should be directed to the corresponding author for the article.

APPENDIX: OBSERVATIONS

Table A1. Observations of three MSPs discovered in our survey. The table contains the epoch of the beginning of each observation and the orbital phase coverage. MS is a 1 h MeerKAT searching campaign, MT is a 5 min MeerKAT timing campaign, *T* is the timing campaign with Parkes (PKS) or Nançay NUPPI and Ar is the archival data.

OBS ID	Epoch (MJD)	Band	PSR J0838–2827		Orbital phase (stop)	Observing campaign	Detection
			Number of dishes	Orbital phase (start)			
1	57800.40416667	PKS-L	1	0.287	0.481	Ar	Yes
2	57800.44710648	PKS-L	1	0.487	0.683	Ar	No
3	57800.49004630	PKS-L	1	0.687	0.883	Ar	No
4	57800.53368056	PKS-L	1	0.890	0.072	Ar	No
5	57801.36817130	PKS-L	1	0.780	0.971	Ar	No
6	57801.50590278	PKS-L	1	0.422	0.617	Ar	Yes
7	57804.45648148	PKS-L	1	0.176	0.372	Ar	No
8	57805.45763889	PKS-L	1	0.843	0.039	Ar	No
9	57806.51944444	PKS-L	1	0.793	0.984	Ar	No
10	58726.55043449	GBT-S	1	0.524	0.574	Ar	Yes
11	59281.75961995	L	60	0.635	0.813	MS	Yes
12	59383.66282510	UHF	56	0.658	0.836	MS	Yes
13	59589.50384377	PKS-UWL	1	0.187	0.763	T	No
14	59596.49794099	PKS-UWL	1	0.790	0.027	T	No
15	59604.63619331	PKS-UWL	1	0.727	0.862	T	No
16	59605.98107639	Nançay	1	0.996	0.168	T	No
17	59623.53764007	PKS-UWL	1	0.836	0.005	T	No
18	59631.42288312	PKS-UWL	1	0.593	0.785	T	No
19	59646.73451911	L	60	0.968	0.987	MT	No
20	59646.77284207	L	60	0.147	0.161	MT	No
21	59649.50915627	PKS-UWL	1	0.902	0.072	T	No
22	59674.54898266	PKS-UWL	1	0.626	0.818	T	No
23	59681.83974899	L	60	0.612	0.627	MT	No
24	59681.86276031	L	60	0.719	0.734	MT	No
25	59681.88707102	L	60	0.832	0.847	MT	No
26	59681.91860452	L	60	0.979	0.994	MT	No
27	59682.78305556	Nançay	1	0.009	0.153	T	No
28	59690.83589324	UHF	64	0.547	0.725	MS	No
29	59692.74902778	Nançay	1	0.465	0.643	T	No
30	59692.79413470	L	60	0.676	0.854	MS	No
31	59708.45767479	PKS-UWL	1	0.691	0.883	T	No
32	59735.63174769	Nançay	1	0.363	0.559	T	Yes
33	59737.34126275	PKS-UWL	1	0.332	0.682	T	No
34	59743.60405093	Nançay	1	0.526	0.699	T	No
35	59748.60000000	Nançay	1	0.815	0.969	T	No
36	59768.12908683	PKS-UWL	1	0.850	0.202	T	No
37	59813.41109954	Nançay	1	0.932	0.114	T	No
38	59870.88750118	PKS-UWL	1	0.859	0.051	T	No
39	59885.21931713	Nançay	1	0.667	0.825	T	No
40	59893.19733796	Nançay	1	0.857	0.015	T	No
41	59894.85643636	PKS-UWL	1	0.590	0.782	T	No
42	59918.64192248	PKS-UWL	1	0.467	0.658	T	No
43	59921.11826389	Nançay	1	0.010	0.183	T	No
44	59922.53582294	Nançay	1	0.618	0.809	T	No
45	60015.85888889	Nançay	1	0.644	0.817	T	No
46	60157.21147230	UHF	56	0.560	0.609	MT	No
47	60157.23683573	UHF	56	0.679	0.727	MT	No
48	60157.26226770	UHF	56	0.797	0.846	MT	No
49	60157.28397596	UHF	56	0.898	0.963	MT	No
50	60158.49916342	UHF	56	0.563	0.579	MT	Yes
51	60158.52476101	UHF	56	0.682	0.715	MT	No
52	60160.65954023	UHF	60	0.634	0.682	MT	No
53	60164.31571931	UHF	56	0.677	0.725	MT	No
54	60174.43260694	UHF	56	0.837	0.885	MT	No
55	60188.31964138	UHF	64	0.571	0.620	MT	Yes
56	60219.06098495	UHF	60	0.872	0.938	MT	No
57	60231.44079977	UHF	60	0.581	0.645	MT	Yes
58	60235.87834609	PKS-UWL	1	0.266	0.458	T	Yes
59	60239.81629748	PKS-UWL	1	0.623	0.996	T	Yes
60	60240.86894794	PKS-UWL	1	0.530	0.717	T	Yes

Table A1 – continued

PSR J0838–2827							
OBS ID	Epoch (MJD)	Band	Number of dishes	Orbital phase (start)	Orbital phase (stop)	Observing campaign	Detection
61	60241.81483914	PKS-UWL	1	0.940	0.266	T	Yes
62	60242.81622803	PKS-UWL	1	0.607	0.260	T	No
63	60243.80943405	PKS-UWL	1	0.237	0.053	T	Yes
PSR J0955–3947							
OBS ID	Epoch(MJD)	Band	Number of dishes	Orbital phase (start)	Orbital phase (stop)	Observing campaign	Detection
1	58228.56180556	PKS-L	1	0.509	0.615	Ar	Yes
2	58230.59166667	PKS-L	1	0.750	0.776	Ar	Yes
3	58264.17939815	PKS-L	1	0.467	0.534	Ar	Yes
4	58354.95011574	PKS-L	1	0.818	0.924	Ar	Yes
5	58894.49988426	PKS-L	1	0.826	0.973	Ar	Yes
6	59281.80189143	L	60	0.761	0.867	MS	Yes
7	59383.70457396	UHF	56	0.853	0.951	MS	Yes
8	59536.31265743	L	56	0.856	0.864	MT	Yes
9	59536.35712501	L	56	0.971	0.978	MT	Yes
10	59536.39231600	L	56	0.062	0.064	MT	Yes
11	59536.39402915	L	56	0.066	0.068	MT	Yes
12	59590.52284295	PKS-UWL	1	0.816	0.084	T	Yes
13	59592.51183922	PKS-UWL	1	0.951	0.072	T	Yes
14	59596.56176176	PKS-UWL	1	0.407	0.561	T	Yes
15	59604.50972760	PKS-UWL	1	0.927	0.008	T	Yes
16	59623.49592920	PKS-UWL	1	0.945	0.040	T	Yes
17	59631.46848707	PKS-UWL	1	0.529	0.623	T	Yes
18	59646.00292362	L	60	0.054	0.062	MT	Yes
19	59646.08950694	L	60	0.277	0.285	MT	No
20	59646.13135	L	60	0.386	0.394	MT	No
21	59646.73866767	L	60	0.953	0.960	MT	Yes
22	59646.77722474	L	60	0.053	0.058	MT	Yes
23	59651.38246858	PKS-UWL	1	0.943	0.037	T	Yes
24	59666.37406578	PKS-UWL	1	0.648	0.742	T	Yes
25	59674.43511797	PKS-UWL	1	0.460	0.514	T	Yes
26	59681.86624246	L	60	0.646	0.654	MT	Yes
27	59681.89055962	L	60	0.708	0.717	MT	Yes
28	59681.92215685	L	60	0.790	0.798	MT	Yes
29	59681.95008508	L	60	0.862	0.870	MT	Yes
30	59681.97825638	L	60	0.935	0.943	MT	Yes
31	59698.46922625	PKS-UWL	1	0.511	0.586	PT	Yes
32	59708.50078823	PKS-UWL	1	0.411	0.499	PT	Yes
33	59738.37969079	PKS-UWL	1	0.552	0.646	PT	Yes
34	59715.46715397	PKS-UWL	1	0.396	0.491	PT	Yes
35	59768.13297573	PKS-UWL	1	0.369	0.520	PT	Yes
36	59820.92296896	PKS-UWL	1	0.662	0.754	PT	Yes
37	59846.04055885	PKS-UWL	1	0.510	0.605	PT	Yes
38	59690.87758498	UHF	64	0.911	0.010	MS	Yes
39	59692.83553331	L	60	0.966	0.065	MS	No
PSR J2333–5526							
OBS ID	Epoch(MJD)	Band	Number of dishes	Orbital phase (start)	Orbital phase (stop)	Observing campaign	Detection
1	57109.20520833	PKS-L	1	0.876	0.019	Ar	No
2	57135.90474537	PKS-L	1	0.697	0.819	Ar	No
3	57144.12280093	PKS-L	1	0.267	0.410	Ar	No
4	57145.10266204	PKS-L	1	0.674	0.816	Ar	No
5	57157.12905093	PKS-L	1	0.484	0.553	Ar	No
6	57204.73506944	PKS-L	1	0.986	0.073	Ar	No
7	57868.19013889	PKS-L	1	0.490	0.514	Ar	No
8	58424.50358796	PKS-L	1	0.515	0.559	Ar	No
9	58424.51770833	PKS-L	1	0.564	0.707	Ar	No
10	58578.21901620	PKS-UWL	1	0.907	0.008	Ar	Yes
11	58579.22269676	PKS-UWL	1	0.397	0.487	Ar	No
12	58580.18784722	PKS-UWL	1	0.752	0.894	Ar	No
13	58586.09050926	PKS-L	1	0.273	0.415	Ar	No
14	58586.09041667	PKS-UWL	1	0.272	0.415	Ar	Yes
15	59314.51063650	L	60	0.627	0.763	MS	Yes
16	59388.15962432	UHF	60	0.668	0.807	MS	Yes

Table A1 – *continued*

OBS ID	Epoch(MJD)	Band	PSR J2333–5526			Observing campaign	Detection
			Number of dishes	Orbital phase (start)	Orbital phase (stop)		
17	59500.56993172	PKS-UWL	1	0.463	0.934	T	No
18	59696.85988437	PKS-UWL	1	0.866	0.958	T	No
19	59635.25228129	<i>L</i>	60	0.687	0.696	MT	Yes
20	59635.31725745	<i>L</i>	60	0.913	0.924	MT	No
21	59674.16373963	<i>L</i>	64	0.962	0.971	MT	Yes
22	59675.18489704	<i>L</i>	60	0.513	0.521	MT	Yes
23	59675.23327667	<i>L</i>	60	0.681	0.690	MT	Yes
24	59692.53882956	<i>L</i>	60	0.844	0.862	MT	Yes
25	59692.50401411	UHF	60	0.722	0.862	MS	Yes
26	59698.53888685	<i>L</i>	60	0.703	0.721	MT	Yes
27	59698.50415936	<i>L</i>	60	0.582	0.721	MS	Yes
28	59708.83588079	PKS-UWL	1	0.500	0.635	T	Yes
29	59715.71597559	PKS-UWL	1	0.419	0.537	T	Yes
30	59725.02419100	<i>L</i>	60	0.779	0.788	MT	Yes
31	59726.11967709	<i>L</i>	60	0.587	0.599	MT	Yes
32	59727.04198033	<i>L</i>	60	0.794	0.806	MT	Yes
33	59728.13519794	<i>L</i>	60	0.594	0.603	MT	Yes
34	59738.77092930	PKS-UWL	1	0.570	0.772	T	Yes
35	59759.88238091	UHF	60	0.964	0.975	MT	Yes
36	59760.16259956	UHF	60	0.938	0.947	MT	Yes
37	59760.93386099	UHF	60	0.619	0.631	MT	Yes
38	59762.92942827	UHF	60	0.557	0.566	MT	Yes
39	59766.68657524	PKS-UWL	1	0.618	0.905	T	Yes
40	59768.64775579	PKS-UWL	1	0.436	0.647	T	Yes
41	59768.96579981	<i>L</i>	60	0.542	0.551	MT	Yes
42	59793.47894792	PKS-UWL	1	0.762	0.998	T	Yes
43	59797.80471181	<i>L</i>	60	0.801	0.813	T	No
44	59820.73430672	PKS-UWL	1	0.516	0.802	T	Yes
45	59828.75854284	<i>L</i>	56	0.412	0.424	MT	No
46	59828.79346181	<i>L</i>	56	0.533	0.545	MT	No
47	59830.47783681	PKS-UWL	1	0.389	0.616	T	Yes
48	59851.65143638	<i>L</i>	60	0.999	0.008	MT	Yes
49	59865.63141320	PKS-UWL	1	0.600	0.954	T	No
50	59957.40894792	PKS-UWL	1	0.665	0.850	T	Yes

Table A2. Observations of other three 4FGL sources in MeerKAT searching campaign.

4FGL J0523.3–2527			4FGL J0940.3–7610			4FGL J1120.0–2204		
Epoch (MJD)	Band	Number of dishes	Epoch (MJD)	Band	Number of dishes	Epoch (MJD)	Band	Number of dishes
59314.55192624	<i>L</i>	60	59281.71765512	<i>L</i>	60	59690.92121282	UHF	64
59388.20084776	UHF	60	59383.74660837	UHF	56	59692.87918223	<i>L</i>	60
59692.46091170	UHF	60	59692.54530037	UHF	60	–	–	–
59698.46137791	<i>L</i>	60	59698.54582936	<i>L</i>	60	–	–	–

This paper has been typeset from a $\text{\TeX}/\text{\LaTeX}$ file prepared by the author.