



HAL
open science

High resolution mass spectrometry-based untargeted approach: a cutting-edge analytical technique for the detection and identification of organophosphorus synthesis sources

Carla Orlandi, Grégoire Delaporte, Emmanuel Joubert, Christine Albaret, Anne Bossée, Laurent Debrauwer, Emilien Jamin

► To cite this version:

Carla Orlandi, Grégoire Delaporte, Emmanuel Joubert, Christine Albaret, Anne Bossée, et al.. High resolution mass spectrometry-based untargeted approach: a cutting-edge analytical technique for the detection and identification of organophosphorus synthesis sources. CBRNE Research & Innovation; 6th International Conference, Mar 2024, Strasbourg, France. hal-04530537

HAL Id: hal-04530537

<https://hal.science/hal-04530537v1>

Submitted on 3 Apr 2024

HAL is a multi-disciplinary open access archive for the deposit and dissemination of scientific research documents, whether they are published or not. The documents may come from teaching and research institutions in France or abroad, or from public or private research centers.

L'archive ouverte pluridisciplinaire **HAL**, est destinée au dépôt et à la diffusion de documents scientifiques de niveau recherche, publiés ou non, émanant des établissements d'enseignement et de recherche français ou étrangers, des laboratoires publics ou privés.

➤ High resolution mass spectrometry-based untargeted approach

A cutting-edge analytical technique for the detection and identification of organophosphorus synthesis sources

Carla ORLANDI
carla.orlandi@inrae.fr

> Context



Events using toxic chemical threat agents → crucial to obtain as much historical information as possible

🔗 Synthesis route and conditions

🏭 Production batches and/or precursors

📍 Source or geographical origin



- aging
- low concentrations
- complex matrices

SOURCING

The process of **search** and **identification** of discriminating elements whose various properties allow us to attribute an origin to a product or sample

Additives

Persistent
contaminants

Decomposition
Degradation

Hydrolysis products

Impurities

Secondary reaction
products

Precursors and
unreacted raw
materials

Interaction by-
products



Chemical Attribution Signature

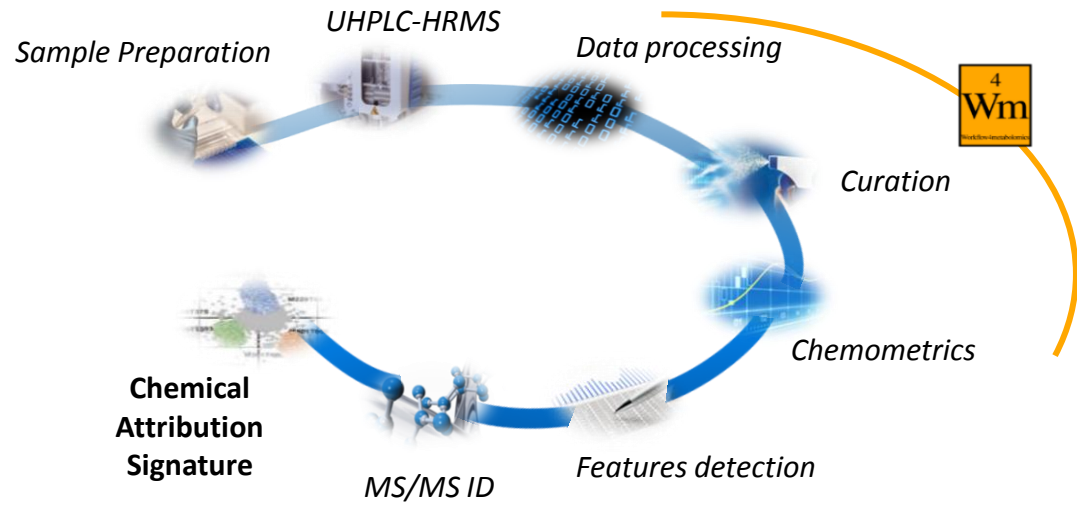
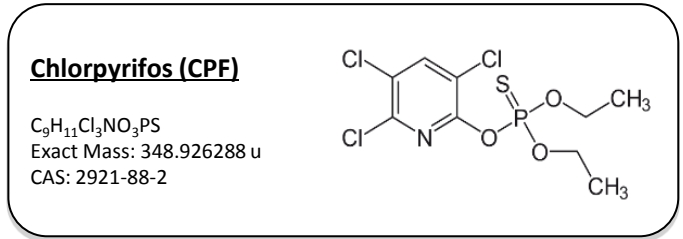
The role of chemical analysis is to provide well-founded information about the source of the sample, in support of forensic investigations

➤ Metabolomics-based trace discovery strategies

Methodology to support attribution of the origin of a toxic agent according to the chemical signature of substances resulting from its production pathway

Approaches

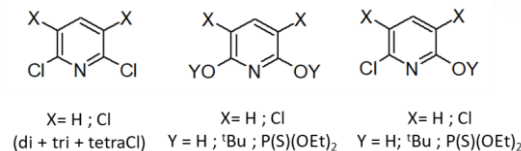
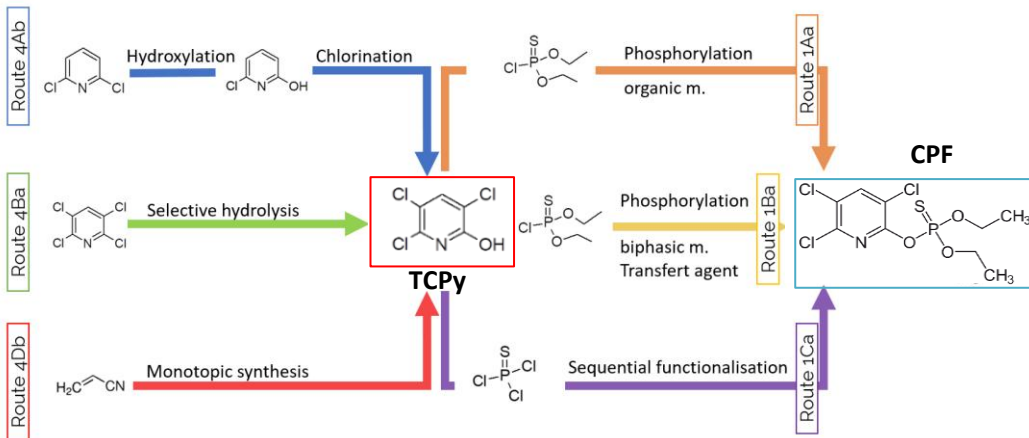
Goals



> Syntheses of Chlorpyrifos



Simplest and least specific → preserve as much information as possible



Wide range of compounds and possible impurities combinations

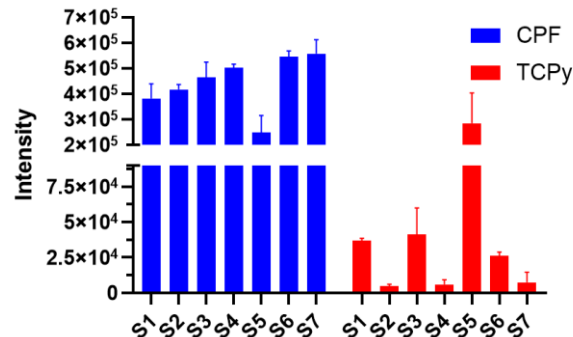
Synthesis	Precursor	Reactant
S1	4Ab	1Aa
S2	4Ab	1Ba
S3	4Ba	1Aa
S4	4Ba	1Ba
S5	4Ba	1Ca
S6	4Db	1Aa
S7	4Db	1Ba

7 chlorpyrifos synthesis combinations (21 samples) – Exp1

Wide variety of aspects → homogeneity of samples analyzed

(3 trials/triplicate/synthesis, i.e. 63 samples) – Exp2

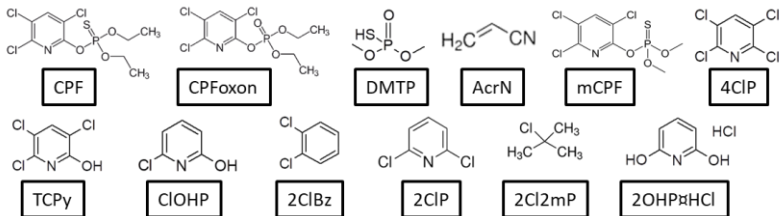
Homogeneity of synthesis raw materials (Exp2)



> Analytical conditions LC-HRMS



Mode and Ionization optimization APCI & ESI



Positive mode ESI : more suitable for these compounds class and greater number of ions formed

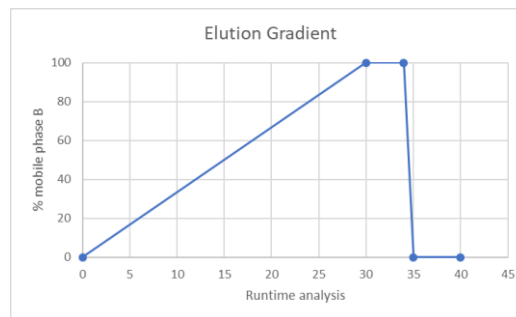


ACQUITY UPLC I class Waters

- Hypersil Gold C18 (100x2.1mm, 1.9 μ m)
- Mobile phases:
A) H₂O/CH₃OH/AcOH
B) CH₃OH/AcOH
- 0.3mL/min at 40°C
- Injection volume: 10 μ L

QToF Synapt G2-Si HRMS Waters

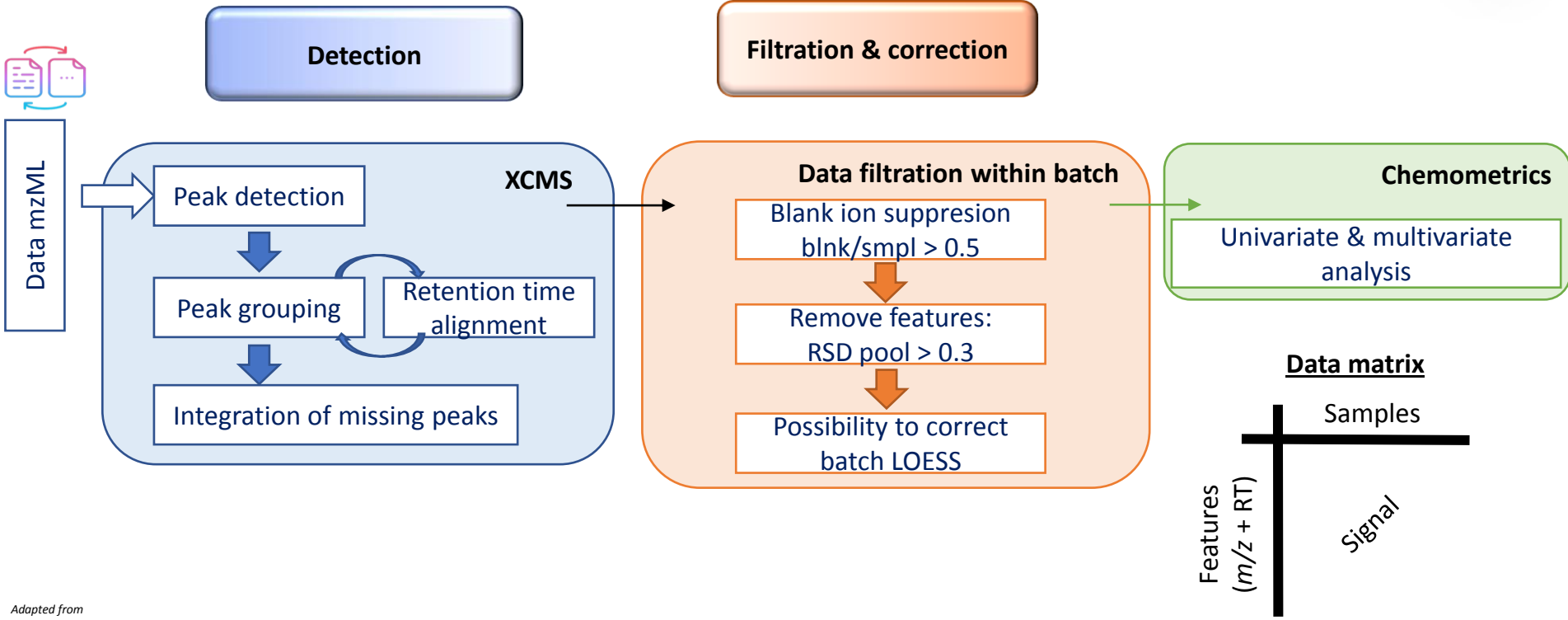
MS spectra m/z 50 - 800
MS resolution ~15000



ESI parameters	POS
Capillary (kV)	0.7
Sampling Cone (V)	20
Source Offset	60
Source T (°C)	130
Desolvator T (°C)	250
Cone Gas (L/Hr)	50
Desolvation Gas (L/Hr)	550
Nebuliser G (Bar)	6.5

Sequence acceptability criteria (QC)

> Untargeted data processing



Adapted from
K. Dinis et al. Food Control 139 (2022) 109098

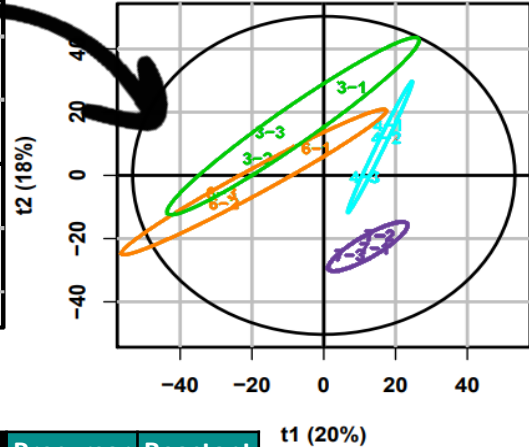
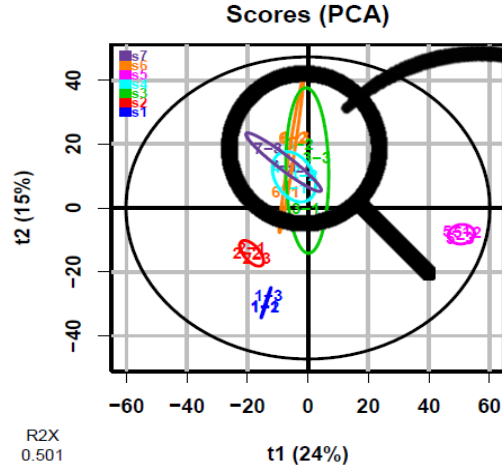
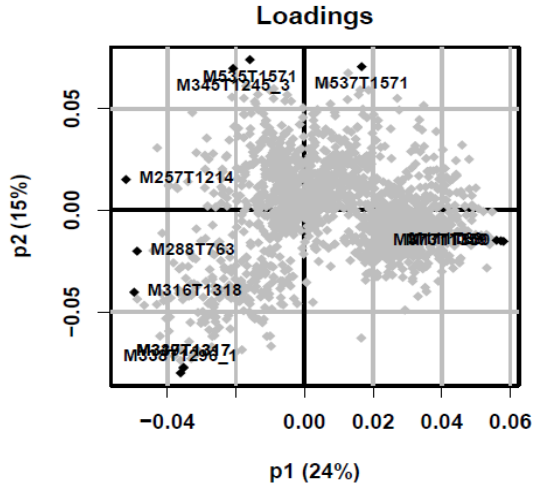


> Chemometrics



Multivariate methods suitable to provide a more complete description of studied phenomena

- Major directions of variability → PCA (unsupervised) → exploratory



PCA: First overview of variability between samples and correlation between features

Synthesis	Precursor	Reactant
S1	4Ab	1Aa
S2	4Ab	1Ba
S3	4Ba	1Aa
S4	4Ba	1Ba
S5	4Ba	1Ca
S6	4Db	1Aa
S7	4Db	1Ba

> Chemometrics

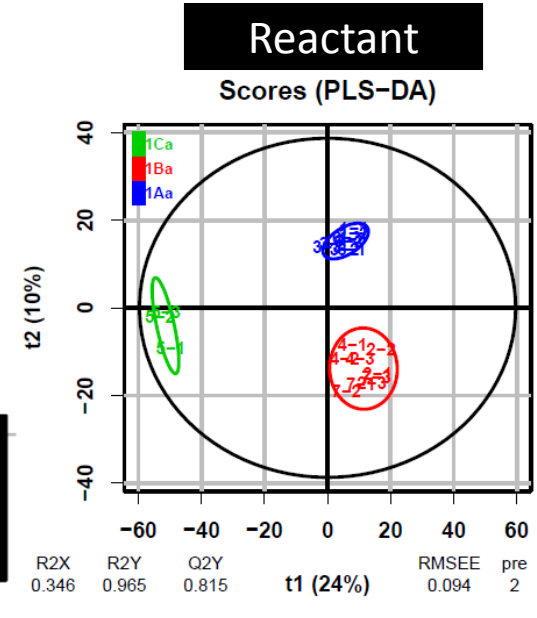
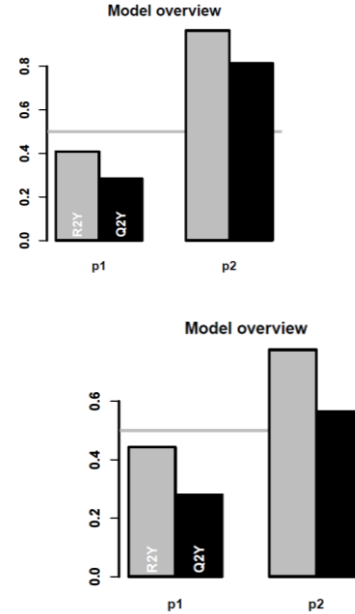
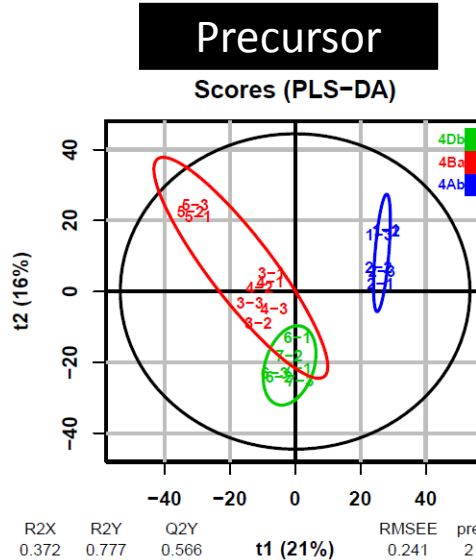
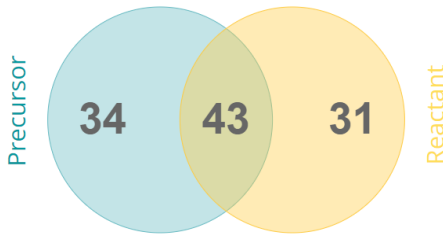


Multivariate methods suitable to provide a more complete description of studied phenomena

- Specific directions of variability → PLS (supervised) → predictive of regression or discrimination

Synthesis	Precursor	Reactant
S1	4Ab	1Aa
S2	4Ab	1Ba
S3	4Ba	1Aa
S4	4Ba	1Ba
S5	4Ba	1Ca
S6	4Db	1Aa
S7	4Db	1Ba

Number of discriminating features (VIP>1)



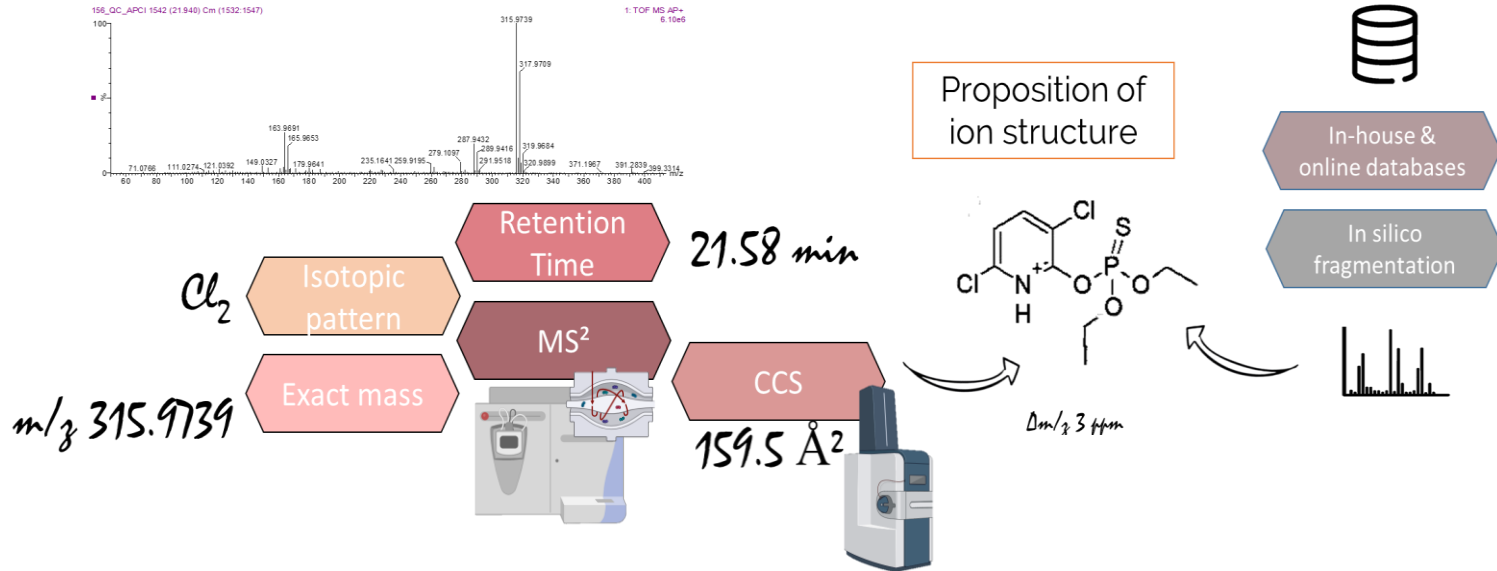
PLSDA: discrimination of synthetic sources achieved
 Quality of the model was assessed with $Q^2Y > 0.4$ and permutation test

> Annotation Challenges



HRMS : sensitive and selective detection of discriminating impurities

- Features (PLSDA; VIP>1) annotated using LC, MS, MSMS and IMS to propose a putative structure
- MS² → characteristic fragments for structural elucidation



[1] Confirmation Structure	[2] Probable Structure	[3] Tentative Candidate	[4] Unknown
4	14	28	55

Sumner et al. *Metabolomics* (2007) 3, 211-221
 Schymanski et al. *Environ Sci Technol.* (2014) 48:2097-8

> How sensitive is the model to variation?

Remove 20% of the weakest features

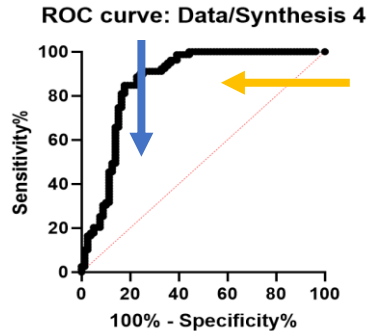
ROC CURVES	CTRL: Exp1 (21 samples)	PAT: Exp2 (63 samples)
Common discriminating features	intensity	intensity



Area under the ROC curve	S1	S2	S3	S4	S5	S6	S7
Area	0.85	0.85	0.83	0.86	0.76	0.78	0.82
95% confidence interval	0.78 to 0.92	0.78 to 0.91	0.76 to 0.90	0.80 to 0.93	0.68 to 0.83	0.71 to 0.85	0.75 to 0.89
P value <0.0001 ?	yes	yes	yes	yes	yes	yes	yes

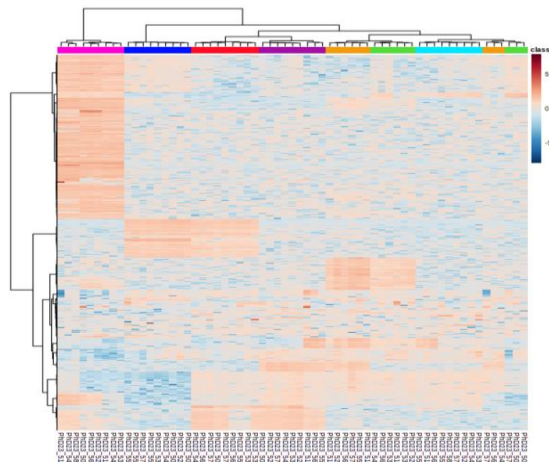
Specificity (Rmv 20% Exp1)	S1	S2	S3	S4	S5	S6	S7
Area	0.86	0.85	0.83	0.86	0.76	0.78	0.82
95% confidence interval	0.79 to 0.92	0.78 to 0.91	0.76 to 0.90	0.80 to 0.92	0.68 to 0.83	0.71 to 0.85	0.75 to 0.89
P value <0.0001 ?	yes	yes	yes	yes	yes	yes	yes

Sensitivity (Rmv 20% Exp2)	S1	S2	S3	S4	S5	S6	S7
Area	0.71	0.71	0.69	0.71	0.67	0.69	0.69
95% confidence interval	0.62 to 0.80	0.62 to 0.80	0.61 to 0.78	0.62 to 0.80	0.58 to 0.76	0.60 to 0.77	0.60 to 0.78
P value <0.0001 ?	yes	yes	yes	yes	no	yes	yes

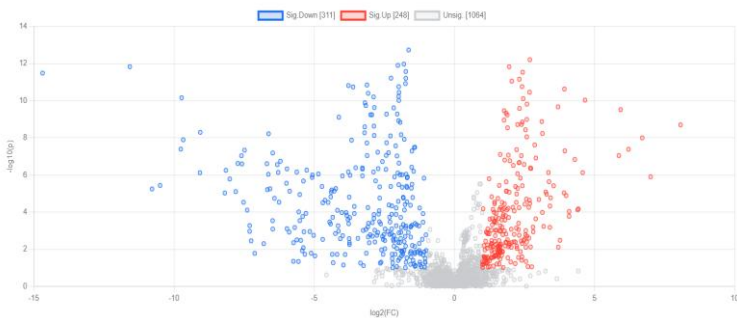


All the AUC values > 0.5 → results are not random
 Model still valid to variations modeling real case samples

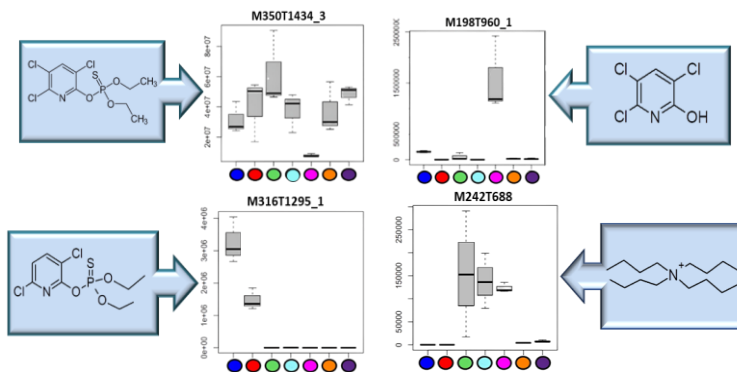
➤ Chemical Attribution Signature (W4M, MetaboAnalyst)



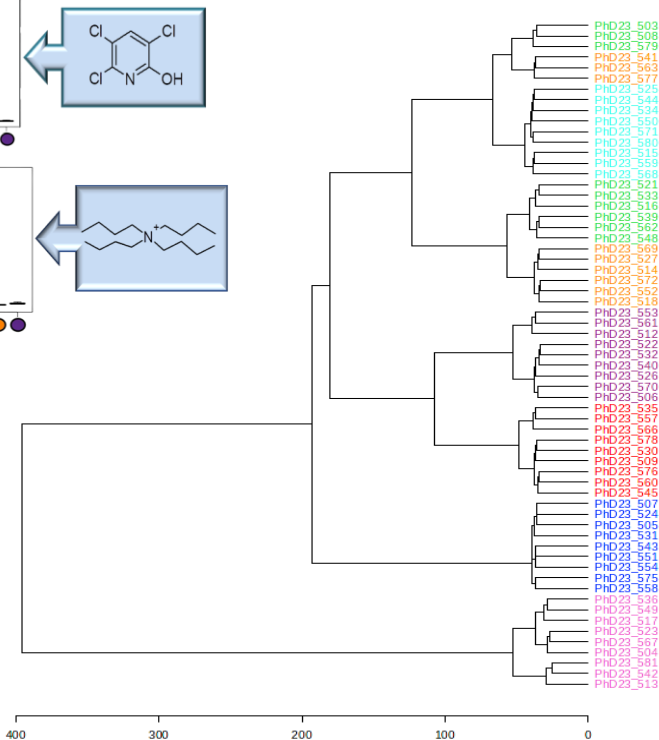
Heatmap



Volcano Plot (S1 vs. S2)



Boxplot

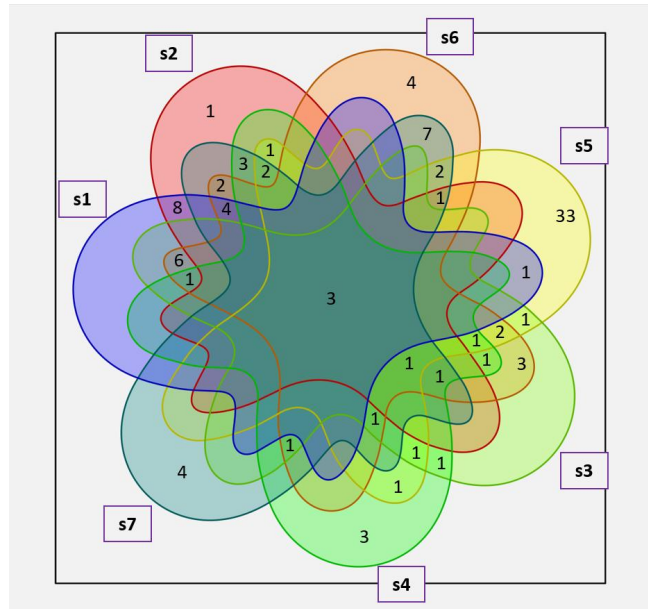


Hierarchical Clustering Analysis

Different graphical representations can be used to illustrate synthesis impurities giving information about sourcing

> Conclusions

- ⊕ **Sensitivity** : Link a manufacturing origin/process to a chemical footprint from synthetic raw materials
- ⊕ **Selectivity** : Footprint characteristic of a single route or set of pathways with common steps



> Perspectives

⊕ Ruggedness

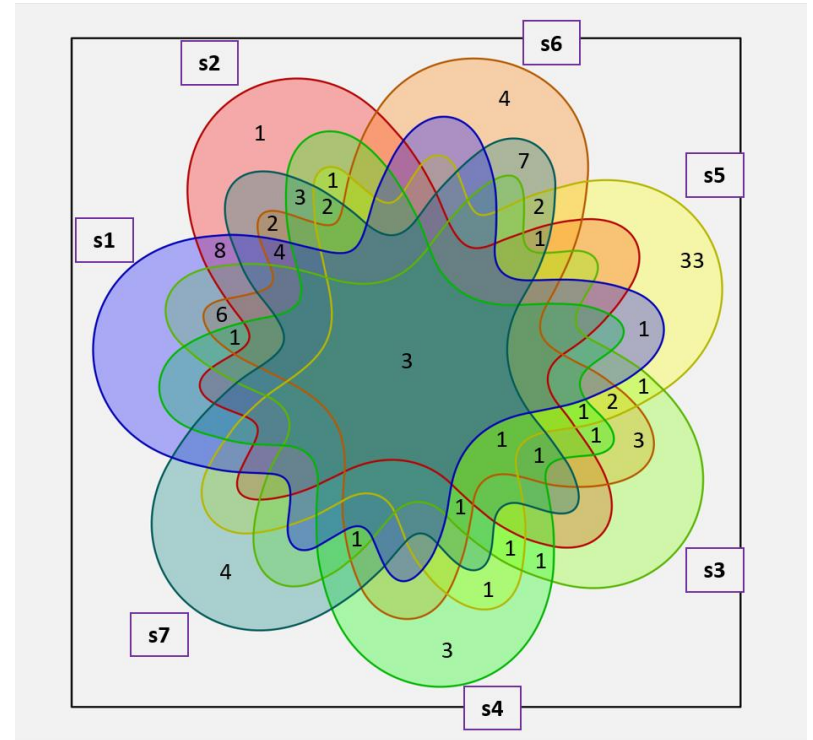
⊕ Is it applicable to complex samples?



Matrices
Sand, Water, Soils, Air

✓ Model Validation

✓ Crude yields



To be continued...

Acknowledgements

Supervisors



Emilien JAMIN

Laurent DEBRAUWER



Collaborators and funders

DGA NRBC

Grégoire DELAPORTE

Anne BOSSEE

Emmanuel JOUBERT

Christine ALBARET



Grant DGA

N° 22470120



Grant AID

N° 2022 65 0036

Monitoring committee



Research &
Innovation

6th International Conference

STRASBOURG
FRANCE
March 19th - 21st 2024

Thank you for your attention

INRAE

