



HAL
open science

Data-based investigation of the effects of canopy structure and shadows on chlorophyll fluorescence in a deciduous oak forest

Hamadou Balde, Gabriel Hmimina, Yves Goulas, Gwendal Latouche, Abderrahmane Ounis, Kamel Soudani

► To cite this version:

Hamadou Balde, Gabriel Hmimina, Yves Goulas, Gwendal Latouche, Abderrahmane Ounis, et al.. Data-based investigation of the effects of canopy structure and shadows on chlorophyll fluorescence in a deciduous oak forest. *Biogeosciences*, 2024, 21 (5), pp.1259-1276. 10.5194/bg-21-1259-2024 . hal-04525643

HAL Id: hal-04525643

<https://hal.science/hal-04525643>

Submitted on 29 Mar 2024

HAL is a multi-disciplinary open access archive for the deposit and dissemination of scientific research documents, whether they are published or not. The documents may come from teaching and research institutions in France or abroad, or from public or private research centers.

L'archive ouverte pluridisciplinaire **HAL**, est destinée au dépôt et à la diffusion de documents scientifiques de niveau recherche, publiés ou non, émanant des établissements d'enseignement et de recherche français ou étrangers, des laboratoires publics ou privés.



Distributed under a Creative Commons Attribution 4.0 International License



Data-based investigation of the effects of canopy structure and shadows on chlorophyll fluorescence in a deciduous oak forest

Hamadou Balde^{1,2,3,4}, Gabriel Hmimina¹, Yves Goulas¹, Gwendal Latouche², Abderrahmane Ounis¹, and Kamel Soudani²

¹Laboratoire de Météorologie Dynamique, Sorbonne Université, IPSL, CNRS/L'École Polytechnique, 91128 Palaiseau, CEDEX, France

²Ecologie Systématique et Evolution, Université Paris-Saclay, CNRS, AgroParisTech, 91190 Gif-sur-Yvette, France

³Centre national d'études spatiales (CNES), 18 Av. Edouard Belin, 31400 Toulouse, France

⁴ACRI-ST, 260 Route du Pin Montard, BP 234, 06904 Sophia Antipolis, France

Correspondence: Hamadou Balde (hamadou.balde@lmd.ispl.fr)

Received: 18 October 2023 – Discussion started: 25 October 2023

Revised: 17 January 2024 – Accepted: 26 January 2024 – Published: 15 March 2024

Abstract. Data from satellite, aircraft, drone, and ground-based measurements have already shown that canopy-scale sun-induced chlorophyll fluorescence (SIF) is tightly related to photosynthesis, which is linked to vegetation carbon assimilation. However, our ability to effectively use those findings are hindered by confounding factors, including canopy structure, fluctuations in solar radiation, and sun–canopy geometry that highly affect the SIF signal. Thus, disentangling these factors has become paramount in order to use SIF for monitoring vegetation functioning at the canopy scale and beyond. Active chlorophyll fluorescence measurements (F_{yieldLIF}), which directly measures the apparent fluorescence yield, have been widely used to detect physiological variation of the vegetation at the leaf scale. Recently, the measurement of F_{yieldLIF} has become feasible at the canopy scale, opening up new opportunities to decouple structural, biophysical, and physiological components of SIF at the canopy scale. In this study, based on top-of-canopy measurements above a mature deciduous forest, reflectance (R), SIF, SIF normalized by incoming photosynthetically active radiation (SIF_y), F_{yieldLIF} , and the ratio between SIF_y and F_{yieldLIF} (named Φ_k) were used to investigate the effects of canopy structure and shadows on the diurnal and seasonal dynamics of SIF. Further, random forest (RF) models were also used to not only predict F_{yieldLIF} and Φ_k , but also provide an interpretation framework by considering additional variables, including the R in the blue, red, green, red-edge, and near-infrared bands; SIF; SIF_y ; and solar zenith angle

(SZA) and solar azimuth angle (SAA). Results revealed that the SIF signal is highly affected by the canopy structure and sun–canopy geometry effects compared to F_{yieldLIF} . This was evidenced by the weak correlations obtained between SIF_y and F_{yieldLIF} at the diurnal timescale. Furthermore, the daily mean SIF_y captured the seasonal dynamics of daily mean F_{yieldLIF} and explained 58 % of its variability. The findings also revealed that reflectance in the near-infrared (R -NIR) and the NIR_v (the product of R -NIR and normalized difference vegetation index (NDVI)) are good proxies of Φ_k at the diurnal timescale, while their correlations with Φ_k decrease at the seasonal timescale. With F_{yieldLIF} and Φ_k as outputs and the abovementioned variables as predictors, this study also showed that the RF models can explain between 86 % and 90 % of F_{yieldLIF} , as well as 60 % and 70 % of Φ_k variations under clear-sky conditions. In addition, the predictor importance estimates for F_{yieldLIF} RF models revealed that R at 410, 665, 740, and 830 nm; SIF; SIF_y ; SZA; and SAA emerged as the most useful and influential factors for predicting F_{yieldLIF} , while R at 410, 665, 705, and 740 nm; SZA; and SAA are crucial for predicting Φ_k . This study highlighted the complexity of interpreting diurnal and seasonal dynamics of SIF in forest canopies. These dynamics are highly dependent on the complex interactions between the structure of the canopy, the vegetation biochemical properties, the illumination angles (SZA and SAA), and the light conditions (ratio of diffuse to direct solar radiation). However, such measurements are necessary to better separate the variability in SIF

attributable to radiation and measurement conditions from the subtler variability attributable to plant physiological processes.

1 Introduction

Spatial and temporal information on vegetation status is crucial to gain a better understanding of vegetation functioning and productivity. Remotely sensed data mostly from satellite and airborne platforms have provided such information for decades now (Ustin and Middleton, 2021). However, most of the remote sensing methods used for detecting and monitoring the dynamics of vegetation properties were exclusively based on vegetation greenness derived from optical vegetation indices (VIs), such as the normalized difference vegetation index (NDVI), and more recently the near-infrared reflectance of vegetation index (NIR_v), which have been broadly and successfully used to estimate some biophysical and biochemical attributes, including leaf area index (LAI), fraction of absorbed photosynthetically active radiation (fAPAR), and leaf chlorophyll content (Campbell et al., 2019; Zeng et al., 2022b).

Sun-induced chlorophyll fluorescence (SIF) is a direct indicator of the vegetation photosynthetic activity that responds to abiotic stresses, such as heat waves and droughts, earlier than VIs (Frankenberg et al., 2011; Guanter et al., 2014; Rascher et al., 2015; Jonard et al., 2020). Further, SIF is not directly impacted by soil background as green vegetation is the only source of chlorophyll fluorescence in the red and far-red. The potential carried by SIF is currently used for estimating and monitoring terrestrial gross primary productivity (GPP) across different vegetation types, including crops, deciduous forests, evergreen forests, tropical forests, wetlands, etc. (Li and Xiao, 2022; Verma et al., 2017; Wood et al., 2017; Balde et al., 2023), for assessing vegetation structural changes and estimating crop productivity (He et al., 2020; Liu et al., 2022).

However, because of the coarse spatial scale of the satellite products used in these abovementioned studies, the results are inconclusive, and it is still questioned whether SIF can provide reliable estimates of GPP at different spatial scales and temporal resolutions across different vegetation types and more particularly under various abiotic stress conditions (Paul-Limoges et al., 2018; Yazbeck et al., 2021; Lin et al., 2022; Balde et al., 2023; Sun et al., 2023b). Further, satellite SIF signals are also subject to the effects of the interactions between the roughness of upper canopy layers (tree forms, gaps) and the solar zenith (SZA) and solar azimuth angle (SAA). These interactions modulate the spatial and temporal distributions of sunlit and shaded leaves; the light distribution within the canopy; and the main physiological processes, such as photosynthesis, evapotranspiration, and stomatal conductance (Gao et al., 2022; Morozumi et al., 2023).

The recent increased availability of diurnal and seasonal time series of SIF data from airborne, drone, and ground-based measurements was crucial for gaining a better understanding of what drives SIF at various spatial and temporal scales and across biomes (Damm et al., 2015; Rascher et al., 2015; Yang et al., 2017; Goulas et al., 2017; Wang et al., 2021; Zhang et al., 2021; Wang et al., 2022; Xu et al., 2021; De Cannière et al., 2022). However, interpretation of locally measured SIF data should be cautiously carried out. In fact, rapid variations in fluorescence may be due to local effects linked to the conditions of illumination and to the light absorption by the canopy. These effects may lead to significant variations in SIF without substantial variations in photosynthesis of the entire canopy. Therefore, distinguishing the effects of endogenous factors related to canopy structure from the effects of photosynthesis changes in the SIF signal is warranted.

At the top of the canopy, the radiative transfer of SIF can be assumed with Eq. (1):

$$\text{SIF} = \text{PAR} \times f\text{APAR} \times \Phi_{\text{F}} \times f_{\text{esc}}, \quad (1)$$

where PAR is the incoming photosynthetically active radiation (400–700 nm), which is the first driver of the canopy SIF signal (Miao et al., 2020). fAPAR is the fraction of absorbed PAR by the vegetation, and f_{esc} is the fraction of all chlorophyll fluorescence photons emitted from all leaves and escaped from the canopy, also known as the fluorescence escape probability fraction, which is dependent on the biophysical and biochemical properties of the canopy and on the sun and view geometry. Φ_{F} is the chlorophyll fluorescence quantum yield (the ratio of the total amount of photons emitted to the total amount of photons absorbed by the chlorophyll pigments); hence, it is a direct indicator of the photosynthetic efficiency. From Eq. (1), it is explicit that in order to interpret top-of-canopy SIF and use it as a proxy of Φ_{F} and photosynthesis, it is necessary to understand and disentangle Φ_{F} from the SIF canopy-structure-dependent variations (due to the spatiotemporal effect's variations in sunlit and shaded leaves and to the light distribution and attenuation within the canopy) that are contained in fAPAR and f_{esc} .

Disentangling the photosynthetically dependent variations from the canopy-dependent ones in the SIF signal is critical to use SIF as a proxy of vegetation response to changing environmental conditions and to abiotic stresses at large scales. It is especially needed for the upcoming Fluorescence Explorer (FLEX) satellite mission that aims at providing measurements of SIF at its full spectral emission (670–780 nm) and with unprecedented spatial resolution (300 m) and repeated global coverage (Drusch et al., 2017). Therefore, the top-of-canopy SIF measured together with GPP at the carbon flux sites can play a substantial role for calibrating and validating FLEX products and airborne campaign measurements.

Recent studies have developed novel approaches based on theoretical insights to correct the SIF signal for multiple scat-

tering and reabsorption effects (Zeng et al., 2019; Yang and van der Tol, 2018; Yang et al., 2020) by determining f_{esc} and allowing the downscaling of SIF emission from canopy to fluorescence emission yield (Lu et al., 2020). This assumes that the entire canopy acts like a big leaf, with unique absorption, fluorescence, and photosynthetic properties. In this situation, f_{esc} is the ratio of top-of-canopy SIF to SIF total, and it is closely related to canopy structural variations, including LAI, leaf angle distribution, reabsorption, and sun-canopy geometry, and varies across time and space (Zeng et al., 2019). Recently, f_{esc} has been estimated using NIR_v or the fluorescence correction vegetation index (FCVI). The former considers soil background effects and is the product of NDVI and the reflectance in the near-infrared (NIR) (Badgley et al., 2017), and it has successfully been used to assess photosynthesis productivity (Mengistu et al., 2021). The latter, FCVI, is framed as the difference between the NIR and the broadband visible reflectance (400–700 nm), considering that the reflectance is measured in the same direction as the SIF observations (Yang et al., 2020). Both approaches have shortcomings, as they cannot be universally applied, because some steps in the estimation of f_{esc} using NIR_v are inconsistent with the radiative transfer theory (Yang et al., 2020), and their effectiveness might be greatly compromised for SIF at the red band where the scattering is much weaker than in the near-infrared. The use of FCVI is also limited as it is not suitable in sparse vegetation canopies, and its computation requires hyperspectral data in the visible spectral range.

If one would like to disentangle the radiation and vegetation-structure-dependent SIF variations from the physiological information in the SIF signal, determining Φ_F would be required. Φ_F can be defined at the leaf scale or even at lower scales (chloroplasts) where the absorbed light energy is dissipated following three pathways: photosynthesis, fluorescence, and heat dissipation. Estimating leaf-scale Φ_F from canopy SIF measurements is an ongoing work that is under exploration. In addition, the computation of total absorbed photosynthetically active radiation (APAR) requires measurements of the incident, transmitted, and reflected PAR, which cannot be measured at satellite or airborne platforms, and are not always available for all ground sites, even those belonging to major carbon flux observation networks, such as the Integrated Carbon Observation System (ICOS). This is the reason why for decades the apparent Φ_F was estimated by normalizing the top-of-canopy SIF signal converted in quanta energy by the incident PAR (Dau-mard et al., 2012; Goulas et al., 2017). Recently, two promising approaches have been used by Zeng et al. (2022a) and Loayza et al. (2023) to estimate Φ_F . To determine Φ_F over cropped fields, including, rapeseed, barley, corn, wheat, and sugar beet, Zeng et al. (2022a) normalized canopy SIF by the near-infrared radiance of vegetation index (rNIR_v , the product of NDVI and the reflected vegetation radiance in the near-infrared), while Loayza et al. (2023) used the integrated vegetation reflected radiance between 500 and 700 nm on a

potato crop. These approaches have advantages, because the effects of canopy structure and sun–canopy geometry on Φ_F estimates may be fully canceled out, the PAR is not needed as an input, and their applicability at the satellite scale is highly feasible. However, how much these methods are reliable and effective at estimating Φ_F under varying environmental conditions and across diverse spatiotemporal scales and vegetation types is not well explored yet.

Luckily, chlorophyll fluorescence can be measured using active methods that allow direct evaluation of the physiological status of the vegetation at the leaf and canopy scales (Porcar-Castell et al., 2014; Moya et al., 2019; Loayza et al., 2023). In active techniques, a modulated source of light is used to excite the chlorophyll that fluoresces in the spectral range between 650 and 800 nm. For instance, the pulse-amplitude modulation techniques, which use a measuring pulsed light and an actinic continuous light, have been widely used at the leaf scale to provide direct chlorophyll fluorescence yield measurements, allowing for the evaluation of photosynthesis and vegetation responses to abiotic factors for decades (Baker, 2008; Magney et al., 2017). But its applicability at canopy and ecosystem scales was hindered by the technique's limitations (Ounis et al., 2001). In the last decades, this gap was filled based on the use of either lasers (or laser diodes) or light emitting diodes (LED), providing short pulses of light (microsecond to even picosecond), together with a synchronized detection to measure chlorophyll fluorescence under daylight conditions at the canopy scale with in situ or airborne remote sensing instruments (Moya et al., 2019; Ounis et al., 2016; Loayza et al., 2023). Therefore, the fluorescence efficiency can be directly observed at the canopy and landscape scales, which is useful to gain a better understanding of terrestrial vegetation functioning. Indeed, LED-induced chlorophyll fluorescence (F_{yieldLIF}) is less affected by the temporal and spatial (horizontal and vertical) distribution of sunlit and shaded leaves on the upper surface and within the canopy compared to SIF, but it may be highly sensitive to environmental conditions, such as high wind speeds (Lopez Gonzalez, 2015).

In forest stands, such as temperate deciduous forests, when the vegetation green-up and senescence phases are excluded, LAI is merely constant. However, the spatial dynamics in LAI may be large from one plot to another. Thus, the canopy structural effect correction on the SIF signal is all the more crucial from a spatial viewpoint. Further, the SIF signal is subject to diurnal variations due to the complex interactions between lighting conditions (diffuse/total radiation, solar, and viewing angles) and canopy structure (Aasen et al., 2019; Xu et al., 2021). Therefore, correcting SIF from these effects, which are very local, is warranted for (i) interpreting and upscaling the SIF signal spatially and temporally across diverse vegetation types, (ii) disentangling the physiological response from variations due to exogenous effects on SIF, (iii) assessing how SIF responds to extreme environmental conditions (heat waves, drought, etc.), and ultimately

(iv) gaining a better understanding of the relationships between SIF and GPP. Nevertheless, to the best of our knowledge, an attempt to use active fluorescence measurements at the canopy scale to correct SIF from canopy structure, incident sunlight, and sun–canopy geometry effects has not been addressed yet.

The main objective of this work is to use active chlorophyll fluorescence (F_{yieldLIF}) as a reference measurement and to compare it to SIF yield ($\text{SIF}_y = \text{SIF}/\text{PAR}$) in order to analyze and correct for the effects of canopy structure and sun–canopy geometry on top-of-canopy SIF at diurnal and seasonal timescales in a temperate deciduous forest, considering diverse environmental conditions. More specifically, this study intends to (i) evaluate the relationship between F_{yieldLIF} and SIF_y as well as evidence the effects of canopy structure and sun–canopy geometry on top-of-canopy SIF through their influence over this relationship and (ii) examine these effects with the aim of developing a correction method based on reflectance measurements and lightning conditions (solar angles, ratio of diffuse to total radiation, etc.).

2 Materials and methods

2.1 Study site description

This study was conducted at the Fontainebleau-Barbeau forest site (FR-Fon), which is an eddy covariance (EC) flux observation site belonging to the ICOS network (Delpierre et al., 2016). The site is located 53 km southeast of Paris, France. It is occupied by a temperate deciduous broadleaf forest type. The dominant forest overstory consisted of mature sessile oak trees (*Quercus petraea* (Matt.) Liebl.), accounting for 79 % of the basal area (Maysonave et al., 2022), with an understory of hornbeam (*Carpinus betulus* L.) (for more details, see <http://www.barbeau.universite-paris-saclay.fr/>, last access: 10 October 2023). The stand height is around 25 m. The soil is an Endostagnic Luvisol, covered by an oligomull humus (Maysonave et al., 2022). The climate is temperate and characterized by an annual average rainfall of approximately 680 mm and an average air temperature of approximately 11 °C (Soudani et al., 2014). The LAI is approximately 5.8 m² m⁻² using the litter collection method over the 2012–2018 period (Soudani et al., 2021). At the Fontainebleau-Barbeau site, carbon and water fluxes have been continuously monitored at 35 m height using the EC method. The main micrometeorological variables, including incident and reflected radiations, are measured at high frequency (1 min), while vapor pressure deficit, precipitation, air and soil temperature, water table depth, soil moisture, and wind speed are either recorded or estimated at a half-hourly timescale.

2.2 Sun-induced and light-emitting-diode-induced chlorophyll fluorescence and reflectance measurements of the canopy

2.2.1 Sun-induced chlorophyll fluorescence measurement system

In the framework of the ECOFLUO¹ project, a passive in situ spectral measurement automated instrument (named SIF3) was developed based on a collaboration between the Laboratoire de Météorologie Dynamique (LMD), École Polytechnique, France, and Laboratoire Écologie, Systématique et Évolution (ESE), Université Paris-Saclay, France. SIF3 acquires continuous measurements of incident and reflected radiation above the canopy. It was installed at the top of the 35 m high tower of the Fontainebleau-Barbeau site above the canopy in July 2021 (Supplement Fig. S1). To avoid artificial shading of the measured area, SIF3 was set to the southern part of the tower.

The SIF3 measurement system includes a control computer (LattPanda V1, LattPanda Shanghai, China, and two Arduino microcontrollers), two spectrometers with coolers, shutter controllers, a general cooler with temperature controller inside the box, two optical fibers, a reference panel, a servo motor, a PAR sensor, a GPS device, temperature and relative humidity sensors, and a camera. The two spectrometers are a high-resolution spectrometer (ASEQ instruments, Vancouver, Canada, HR1-T model, with thermoelectric cooling) and a broadband spectrometer (ASEQ, LR1-T model, with thermoelectric cooling). The high-resolution spectrometer (HR1-T) has a spectral range between 650 and 800 nm, a high spectral resolution with full width at half maximum (FWHM) of approximately 0.3 nm. The HR1-T was used to determine sun-induced chlorophyll fluorescence. The broadband spectrometer (LR1-T) has a spectral range between 400 and 1000 nm and a FWHM of approximately 1.5 nm. It was used to measure canopy reflectance and the optical vegetation indices (VIs).

In order to reduce the noise and dark current, both spectrometers were contained within a dry and thermoregulated box system that maintained the temperature at 19 ± 0.61 °C. SIF3 performs sequential vegetation reflected radiance measurements and irradiance measurements on a polytetrafluoroethylene (PTFE) reference panel (PMR10P1, Thorlabs, Maisons-Laffitte, France). The sequential measurements of SIF3 were first to measure the reference PTFE with LR1-T and HR1-T spectrometers and second to measure vegetation-reflected radiance with both spectrometers. Within one measurement of the target canopy or the reference, each spectrometer performed the following steps: (i) optimizing the integration time (IT) for measurement, (ii) measurement, and

¹“Télé-détection in-situ de la fluorescence chlorophyllienne pour le suivi du fonctionnement carboné des écosystèmes en support à la mission FLEX”

(iii) measurement of the dark current. The date and time at the start and end of each measurement were recorded. Two 15 m long optical fibers (FT1000EMT and FT1000UMT, Thorlabs, Maisons-Laffitte, France, for HR1-T and LR1-T spectrometers, respectively) with a 1000 μm core diameter and a numerical aperture (NA) of 0.39 were used to measure the irradiance of the reference and the radiance of the canopy, at the nadir position. The field of view (FOV) of each measuring channel is adjusted to 25° with the use of a Gershun tube to ensure a flatter spatial response and covered approximately 6 m² of the canopy area. Long-pass optical filters (5CGA-550, cut-off wavelength 550 nm, and 5CGA-375, cut-off wavelength 375 nm; Newport, Irvine, CA, USA, for the HR1-T and LR1-T channels, respectively) were placed in front of each tube to avoid second-order detection and to protect fiber ends. The dark current measurements were subtracted from the reference and canopy measurements before SIF retrieval. The IT of each spectrum was automatically optimized to achieve values that are as high as possible but unsaturated to improve as much as possible the signal-to-noise ratio (SNR). Note that SIF3 integrates a quantum sensor to measure the PAR at high frequency and a camera that allows for taking RGB images of the canopy in the FOV. Before the installation of SIF3 in the field, we performed lens alignment and radiometric and spectral calibrations of the instrument using a calibrated light source (4P-GPS-060-SF and EHLS-100-075R, Labsphere, North Sutton, NH, USA).

2.2.2 Light-emitting-diode-induced chlorophyll fluorescence measurement system

F_{yieldLIF} measurements were acquired with an active fluorometer instrument, named LIF, developed in the LMD laboratory, which was installed at the top of the 35 m high tower next to SIF3 above the canopy. This instrument is very similar to the one described by Moya et al. (2019). It uses a blue LED array (Enfis Ltd., Swansea, UK; peak wavelength 455 nm, FWHM 21 nm, radiant power 6 W) as an excitation source. To separate the chlorophyll fluorescence emission induced by the LED from that induced by daylight and from the reflected sunlight in the filter bandwidth, the LED light is pulsed at a variable frequency with a pulse duration of about 5 μs . Note that the instrument uses a bimodal excitation conditioned by the PAR: for $\text{PAR} < 90 \mu\text{mol m}^{-2} \text{s}^{-1}$ (night-time), the frequency is set at 30 Hz, while it is set at 200 Hz (daytime) for $\text{PAR} > 100 \mu\text{mol m}^{-2} \text{s}^{-1}$. This bimodal excitation scheme helps to avoid variable fluorescence induction during night and to increase SNR during daytime. The instrument optical head consisted of two main parts: (i) the source module that includes the blue LED array, its electronic driver, a heat dissipation module, and a Fresnel lens (diameter 180 mm) to collimate the excitation light and (ii) a detection module that includes a second Fresnel lens of the same diameter, a set of optical filters, a large-area PIN photodiode (10 × 10 mm², S3590, Hamamatsu Photonic, Japan), and a

laboratory designed amplifier that selects the LED-induced fluorescence signal (F_{yieldLIF}) from the reflected sunlight in the same wavelength band (LNIR, reflected sunlight in the near-infrared). This amplifier uses a sample and hold circuit (AD585, Analog Devices, Wilmington, MA, USA) to deliver the peak value of the fluorescence signal to the digital–analog (AD) conversion card (USB 6212, NI, Austin, Texas, USA) and a low-pass electronic filter to deliver LNIR to the same card. The set of optical filters includes a high-pass interferential filter with a cut-off wavelength at 400 nm to reject UV light, a second high-pass interferential filter with a cut-off wavelength at 650 nm to reject the excitation light, and a 3 mm thick RG9 filter (Schott, Germany) to select the far-red fluorescence emission over 725 nm. The FOV can be controlled thanks to an onboard camera (RLC-520A, Reolink, Hong Kong). We selected a top-of-canopy area in the FOV of the SIF instrument, resulting in a 9 m measuring distance with a viewing zenith angle of 30°. However, as the FOV of the instrument is about 100 mrad, the measured area was about 0.4 m², which is much smaller than the FOV of SIF3 (approximately 6 m²). Power supplies as well as synchronization and acquisition electronics are enclosed in a separate box, connected to the optical head by a 5 m long cable. F_{yieldLIF} and LNIR data are stored on disk with an acquisition and control program written in LabVIEW (NI, Austin, Texas, USA) that runs on a LattePanda V1 microcomputer. Other variables such as PAR and LED, photodiode and box temperatures are also continuously monitored.

2.3 Canopy–sun-induced chlorophyll fluorescence retrieval

As spectral measurements are recorded in digital counts, they were converted into radiometric units before SIF retrieval. SIF was retrieved at the far-red oxygen observation band (O₂-A) from the HR1-T canopy reflectance measurements. Data quality control was performed prior to SIF retrieval following the protocol proposed by Cogliati et al. (2015) to put aside abnormal data caused by abrupt changes in incident radiation. SIF retrieval was performed using the classical three-band Fraunhofer line discrimination (3FLD) method at the O₂-A band (Meroni et al., 2009; Daumard et al., 2012).

The 3FLD approach is rooted in the FLD principle, which requires measurements in two channels, one inside and one outside a Fraunhofer or absorption line (Meroni et al., 2009). The FLD hypothesis is based on the consistency of reflectance and SIF at both bands. However, studies have found evidence that the two variables are not constant (Meroni et al. 2009). The 3FLD method rather assumes that reflectance and SIF vary linearly around the absorption band considered, which solves the limitation given by the FLD hypothesis and uses three spectral bands per absorption line to retrieve SIF (Zhang et al., 2021). The 3FLD SIF retrieval at 760 nm (O₂-

A band) can be derived as follows:

$$\text{SIF}_{760} = \frac{(E_l \times w_l + E_r \times w_r) \times L_{\text{in}} - (L_l \times w_l + L_r \times E_r) \times E_{\text{in}}}{(E_l \times w_l + E_r \times w_r) - E_{\text{in}}},$$

$$w_l = \frac{\lambda_r - \lambda_{\text{in}}}{\lambda_r - \lambda_l}, w_r = \frac{\lambda_{\text{in}} - \lambda_l}{\lambda_r - \lambda_l}, \quad (2)$$

where L is the upwelling radiance. E is the downwelling irradiance measured on the reference panel. Indices “l”, “r”, and “in” represent the reference bands at the left, right, and inside the absorption band, respectively. w_l and w_r denote the weighting factors depending on the wavelength, λ , on the left, inside, and right of the absorption band. Within this study, the left, inside, and right bands were set at 757.86, 760.51, and 770.46 nm, respectively.

2.4 Theoretical derivations of Φ_k , vegetation indices, and SIF yield

NIR_v has been used to isolate vegetation signal properties from soil background and to correct canopy-scale far-red SIF for scattering effects (Badgley et al., 2017). NIR_v can be computed according to Badgley et al. (2017) and Zeng et al. (2019) using the following Eq. (4):

$$\text{NDVI} = \frac{R_{[780-800]} - R_{[670-680]}}{R_{[780-800]} + R_{[670-680]}}, \quad (3)$$

$$\text{NIR}_v = R - \text{NIR} \times \text{NDVI}, \quad (4)$$

where R represents the spectral reflectance, and the index number denotes the wavelength range or wavelength at which the reflectance was measured. In Eq. (4), NIR_v is largely dependent on the LAI, the leaf angle distribution, and the geometry of the sun–canopy, as well as on the influence of fluctuations in incident radiation at the diurnal and seasonal timescales. R - NIR was calculated at the 850 nm central wavelength.

F_{yieldLIF} is an active measurement and is not directly dependent on the ambient light conditions. Thus, it is not impacted by ambient radiation changes, because the measured LED-induced chlorophyll fluorescence is directly and only emitted by the leaves targeted by the LED. Variations in F_{yieldLIF} are then presumably only induced by changes in the photosynthetic pigment concentrations, in the leaf area inside the FOV, and in the vegetation functioning that modulates the chlorophyll fluorescence quantum yield. As no significant phenological changes occurred during the study period, we assumed that F_{yieldLIF} is free from the vegetation structure and sun–canopy geometry effects and can be used as a reference measurement in this respect. The blue LED light can be considered as constant and, therefore, from Eq. (1) we can assume that Φ_F is equal to F_{yieldLIF} and then Eq. (1)

becomes

$$\text{SIF} = \text{PAR} \times \text{fAPAR} \times F_{\text{yieldLIF}} \times f_{\text{esc}}, \quad (5)$$

$$\frac{\text{SIF}}{(\text{PAR} \times F_{\text{yieldLIF}})} = \text{fAPAR} \times f_{\text{esc}}. \quad (6)$$

From Eq. (6), we defined Φ_k as following:

$$\Phi_k = \frac{\text{SIF}}{(\text{PAR} \times F_{\text{yieldLIF}})} = \frac{\text{SIF}_y}{F_{\text{yieldLIF}}}, \quad (7)$$

Note that this is a simplification of the complex relation that does exist between SIF_y and F_{yieldLIF} , as SIF yield and F_{yieldLIF} respond differently to canopy structure effects. At the diurnal timescale, Φ_k is subject to variations in leaf angle distribution, incident sunlight, or atmosphere conditions (clear or cloudy sky conditions), as well as to the effects of sun–canopy geometry (including SZA and SAA).

In remote sensing, the total amount of light absorbed by the canopy cannot be directly measured. This quantity is highly dependent on the solar angle and canopy structure (distribution of light and shaded areas at the top and inside the canopy). Hence, by normalizing the canopy-emitted SIF by the incident PAR, it is possible, as a first approximation and empirically, to partially disentangle the SIF signal from its dependence to incident radiation and thus to detect some changes in the vegetation properties or the plant physiological responses to abiotic factors. Therefore, the SIF_y was calculated using the PAR measured at the top of the EC tower site. Note that the SIF fluxes were converted into quanta units following Daumard et al. (2012) prior to SIF_y calculation.

$$\text{SIF}_y = \text{SIF}/\text{PAR} \quad (8)$$

2.5 Data analysis

In this study, we used data measurements from June to August 2022. As radiation-limited photosynthesis is expected in the early morning and late afternoon, due to lower incoming irradiance, only the data recorded between 09:00 and 16:00 UTC were considered in this study. The negative SIF values, the SIF_y values higher than mean ± 3 standard deviation, and the PAR data less than $200 \mu\text{mol m}^{-2} \text{s}^{-1}$ were excluded in the analysis. First, we applied a linear model to analyze at the daily and seasonal timescales the strength of the relationships: (i) between SIF_y and F_{yieldLIF} and (ii) between NIR_v and Φ_k . Note that daily means of SIF_y , F_{yieldLIF} , NIR_v , and Φ_k are hereafter noted $\overline{\text{SIF}}_y$, $\overline{F}_{\text{yieldLIF}}$, $\overline{\text{NIR}}_v$, and $\overline{\Phi}_k$. The coefficient of determination (R^2) and the p value are used to assess the strength of the correlations. These relations are examined at instantaneous (seconds to minutes) and daily (averaged data from 09:00 to 16:00 UTC) timescales. Second, we used random forest (RF) models as a tool to understand F_{yieldLIF} and Φ_k dynamics by comparing their predictions based on a combination of remote

sensing metrics. We chose RF models because they are non-parametric models and are well adapted for predicting non-linear and multi-parameter relationships in complex situations and foremostly highly interpretable by using metrics, such as the importance of predictor variables and partial dependence (Breiman, 2001). Several types of RF models were designed for estimating F_{yieldLIF} and Φ_k . The expression of each model and its purpose are given in Table 1. We used the clear-sky condition (the fraction of diffuse PAR over total PAR < 0.3) data to train the models. It is worth noting that for F_{yieldLIF} predictions using all data (clear sky and cloudy conditions) or clear-sky condition data alone yielded the same results (data not shown), while for Φ_k , which was defined to represent the effects of canopy structure and sun–canopy geometry, only clear-sky conditions were used with respect to satellite conditions of data acquisition. To avoid the impact of correlations of predictors on the RF models' predictions, the correlations matrix between predictors was computed (Supplement Fig. S2 and S3), and then the least correlated predictors were selected to train our models. All RF models were established using 200 trees and sampled with replacement based on bag fraction of 80 % (80 % of the data for training and 20 % for testing). The out-of-bag (OOB) predictor importance estimates were determined to evaluate the contribution of each predictor. Model performance was evaluated using the OOB coefficient of determination (OOB R^2) score and the adjusted coefficient of determination (adj. R^2) of the correlations between the test dataset and the predictions, as well as the root mean squared error (RMSE). The closest the OOB R^2 and adj. R^2 are, the better the model is able to be generalized. All RF models were run using instantaneous measurements. For SIF and reflectance data extraction, MATLAB R2021a (MathWorks, Inc., USA) was used, and Python version 3.9.1 was used for data analysis and visualization (Scikit-learn, SciPy, Seaborn, Matplotlib, Pandas, and Numpy libraries).

3 Results

3.1 Relationships between canopy SIF_y and F_{yieldLIF} and their seasonal variations

The results, in Fig. 1a, show that the coefficients of determination of the relationships between SIF_y and F_{yieldLIF} were low and varied highly across the season, and that the ratio between diffuse PAR and total PAR cannot entirely explain this inter-daily variability. This indicates that at the diurnal scale SIF_y was weakly correlated to F_{yieldLIF} . Note that relations between SIF_y and F_{yieldLIF} analyzed at hourly timescale (hourly averages) relatively improved their correlation (Supplement Fig. S4). At the seasonal scale (daily averages), in Fig. 1b and c, the results show that the R^2 between SIF_y and F_{yieldLIF} was 0.58, indicating that SIF_y and F_{yieldLIF} were better correlated at the seasonal timescale. The fraction of

diffuse to total PAR cannot explain this correlation, and their agreements tend to diverge at some period of the season. Additionally, note that, overall, the magnitude of both variables has considerably decreased from the start to the end of the given period.

3.2 Diurnal variations in PAR, NIR_v, R-NIR, Φ_k , SIF, SIF_y, and F_{yieldLIF}

Figure 2 shows the diurnal cycles (from 09:00 to 16:00 UTC) of PAR, NIR_v, R-NIR, Φ_k , SIF, SIF_y, and F_{yieldLIF} .

It shows three sunny and steady weather days, and so the PAR constantly increased in the morning to a maximum around noon and decreased in the afternoon for all days. Its values were between 1000 and almost 2000 $\mu\text{mol m}^{-2} \text{s}^{-1}$.

The diurnal variations in NIR_v and R-NIR exhibited similar patterns, with the lowest values recorded at noon. The depression observed in NIR_v and R-NIR patterns from 10:00 to around 12:00 UTC is attributed to shadows observed within the FOV of the SIF3 instrument as has been shown by the sunlit leaves fraction determined from RGB images (Supplement Figs. S5 and S6).

Φ_k surged in the early morning hours (not shown) and then declined from 10:00 up to around 12:00 UTC; afterwards, it increased in the afternoon for all days. The depression observed in Φ_k between 10:00 and 12:00 UTC is simultaneous to the decline in NIR_v and in R-NIR. This implies that diurnal dynamics in Φ_k may be due to the intra-daily pattern in the distribution of sunlit and shaded leaf fraction caused by the geometric relationships between canopy structure and the sun's geometry.

It is well known that diurnal SIF cycles are tightly linked with dynamics in PAR. Conversely, in Fig. 2 SIF exhibited different diurnal dynamics for all days than the incident PAR ones. The pattern in SIF declined from 10:00 to around 12:00 UTC and was afterwards dominated by dynamics in PAR. It can also be observed that the magnitude of SIF markedly decreased from 10 July to 6 August, being from 2.06 to 1.33 $\text{mW m}^{-2} \text{sr}^{-1} \text{nm}^{-1}$ (approximately 35 % relative decrease in SIF emission).

The diurnal variations in SIF_y surged in the early morning (not shown) and then decreased from 10:00 UTC to noon, and afterwards it increased in the afternoon for the three considered days. Similarly to SIF, the magnitude of SIF_y also shows an overall decrease from 10 July to 6 August. In contrast, the diurnal pattern in F_{yieldLIF} shows a continuous and significant decrease during the day, with a 10 % loss. Note that the range of F_{yieldLIF} have also decreased over the given period. F_{yieldLIF} appears insensitive to the canopy structure and sun–canopy geometry changes, compared to the dynamics in SIF and SIF_y, which showed a significant decline in the morning. Besides, it is worth noting that F_{yieldLIF} measurements are continuously recorded (day and night); the full diurnal cycles are presented in Supplement Fig. S7.

Table 1. Random forest models for F_{yieldLIF} and Φ_k predictions. R denotes spectral reflectance in blue (410 nm), red (530 nm and 560 nm), green (665 nm), red-edge (705 and 740 nm), and near-infrared (830 nm). SIF is the far-red sun-induced chlorophyll fluorescence at 760 nm, SIF_y is the ratio of SIF over PAR, SA stands for solar angles, including solar zenith (SZA) and azimuth (SAA) angles. F_{yieldLIF} is the LED-induced chlorophyll fluorescence, and Φ_k is the ratio between SIF_y and F_{yieldLIF} .

Model name	Inputs	Outputs	Purpose
FY- R	$R_{410}, R_{530}, R_{560}, R_{665}, R_{705}, R_{740}, R_{830}$	F_{yieldLIF}	To test the ability of reflectances to predict F_{yieldLIF} .
FY- R -SIF	$R_{410}, R_{530}, R_{560}, R_{665}, R_{705}, R_{740}, R_{830}, \text{SIF}$	F_{yieldLIF}	To test the ability of reflectances and SIF to predict F_{yieldLIF} .
FY- R - SIF_y	$R_{410}, R_{530}, R_{560}, R_{665}, R_{705}, R_{740}, R_{830}, \text{SIF}_y$	F_{yieldLIF}	To test the effect of apparent SIF yield (SIF normalized by PAR) to predict F_{yieldLIF} .
FY- R -SA	$R_{410}, R_{530}, R_{560}, R_{665}, R_{705}, R_{740}, R_{830}, \text{SZA}, \text{SAA}$	F_{yieldLIF}	To test the ability of reflectances and solar angles to predict F_{yieldLIF} .
FY- R - SIF_y -SA	$R_{410}, R_{530}, R_{560}, R_{665}, R_{705}, R_{740}, R_{830}, \text{SIF}_y, \text{SZA}, \text{SAA}$	F_{yieldLIF}	To test the ability of reflectances, SIF yield, and solar angles to predict F_{yieldLIF} .
Φ_k - R	$R_{410}, R_{530}, R_{560}, R_{665}, R_{705}, R_{740}, R_{830}$	Φ_k	To test the ability of reflectances to predict Φ_k .
Φ_k - R -SA	$R_{410}, R_{530}, R_{560}, R_{665}, R_{705}, R_{740}, R_{830}, \text{SZA}, \text{SAA}$	Φ_k	To test the synergy between reflectances and solar angles to predict Φ_k .

3.3 Relationship between Φ_k and NIR_v as well as its seasonal variations

Figure 3a shows the R^2 of the relationship between NIR_v and Φ_k at instantaneous scale (acquisition time step) as a function of the fraction between diffuse and total PAR, while Fig. 3b depicts the relationships between Φ_k and NIR_v at seasonal scale, and Fig. 3c underlines their seasonal dynamics.

Conversely to the weak correlation found between SIF_y and F_{yieldLIF} seen in Fig. 1a, the results in Fig. 3a show that there are relatively moderate and substantially good relationships between NIR_v and Φ_k over the season. Thus, for most of the clear-sky condition (ratio diffuse PAR to total PAR < 0.3), NIR_v may explain more than 50 % of the instantaneous variations in Φ_k at the diurnal scale, but the strength of the relationship between these two variables under clear skies remains variable. The lowest values of R^2 are mostly related to diffuse sky conditions.

The results in Fig. 3b show a weak but statistically significant relationship between the daily mean $\overline{\text{NIR}_v}$ and $\overline{\Phi_k}$ with an R^2 of 0.16 at the seasonal scale. This indicates that $\overline{\text{NIR}_v}$ is a weak proxy of $\overline{\Phi_k}$ at the seasonal scale. Furthermore, we can also infer that the fraction of diffuse to total PAR explains this correlation, as lower correlation values of $\overline{\text{NIR}_v}$ and $\overline{\Phi_k}$ are closely related to clear-sky conditions and high correlation values to diffuse sky conditions. In addition, the seasonal dynamics in $\overline{\text{NIR}_v}$ and $\overline{\Phi_k}$ (Fig. 3c) exhibited a good match for some days at the seasonal scale. The magnitude of

$\overline{\text{NIR}_v}$ and $\overline{\Phi_k}$ also varied significantly over the season, which can be caused by rapid changes in ambient environmental conditions and in leaf and canopy biochemical and structural properties. Note that an independent analysis, identical to the one presented here on the relationship between NIR_v and Φ_k , was realized on the relationships between R - NIR and Φ_k . The results shown in Supplement Fig. S8 suggest that the R - NIR reflectance alone can also be a good proxy of Φ_k at the diurnal timescale. This is paramount for implementing this approach at the satellite scale.

3.4 Random forest models for predicting F_{yieldLIF} and Φ_k in a temperate deciduous forest

We tested the potential of the RF modeling approach to predict F_{yieldLIF} and Φ_k based on remotely sensed products. We intended to show FY- R - SIF_y -SA and FY- R -SA models' results for F_{yieldLIF} and Φ_k - R and Φ_k - R -SA results for Φ_k estimates. The other RF models' results for F_{yieldLIF} are given in Supplement Fig. S9.

The results show that all random forest models had a strong performance on the prediction of F_{yieldLIF} (Table 2), with OOB R^2 varying between 0.86 and 0.90 and adj. R^2 between 0.87 and 0.90. In Fig. 4, the RF models' residuals between observed and predicted F_{yieldLIF} are randomly distributed, and F_{yieldLIF} is not overestimated or underestimated. Note that adding SIF (FY- R -SIF, OOB $R^2 = 0.87$ and adj. $R^2 = 0.88$) or SIF_y (FY- R - SIF_y , OOB $R^2 = 0.88$ and adj. $R^2 = 0.89$) relatively increases the model performance

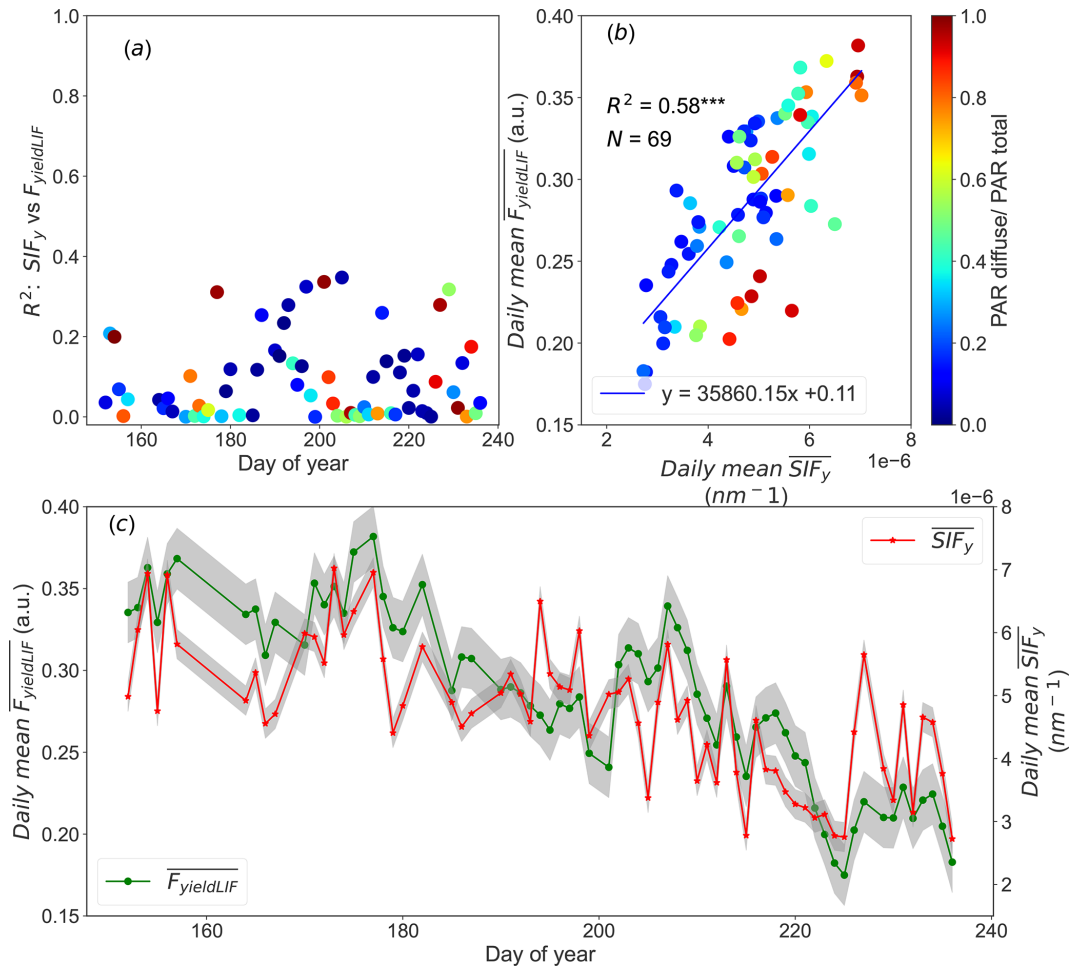


Figure 1. Panel (a) shows the inter-daily variations in the coefficient of determination (R^2) of the relationship between SIF_y and $F_{yieldLIF}$ and panel (b) shows the relationship between daily mean \overline{SIF}_y and $\overline{F}_{yieldLIF}$. In panels (a) and (b), the color of the points shows the fraction of diffuse to total PAR with the color scale on the left of panel (b). Panel (c) depicts seasonal dynamics of \overline{SIF}_y and $\overline{F}_{yieldLIF}$. The shading around the lines indicates the 95 % confidence interval. The asterisks stand for the statistical significance level (***) = $P \leq 0.001$.

compared to the FY-R model (FY-R, OOB $R^2 = 0.86$ and adj. $R^2 = 0.87$), but the difference between R^2 is not statistically significant. Thus, the use of reflectance bands only allows us to predict $F_{yieldLIF}$ and SIF or SIF_y and did not provide an additional improvement for predicting $F_{yieldLIF}$ at the acquisition time step. Substituting SIF for SZA and SAA also showed good model performance (FY-R-SA, OOB $R^2 = 0.90$ and adj. $R^2 = 0.90$). The FY-R- SIF_y -SA model revealed a performance similar to the FY-R-SA model's one (FY-R- SIF_y -SA, OOB $R^2 = 0.90$ and adj. $R^2 = 0.90$). The predictor importance estimates for the FY-R-SA model showed that SZA, SAA, and R_{410} contribute the most in determining $F_{yieldLIF}$ (Fig. 4d), while for the FY-R- SIF_y -SA model SZA, R_{830} , SAA, R_{410} , and R_{740} (Fig. 4b) provide the most useful information for $F_{yieldLIF}$ predictions.

The results reveal that RF models had good performance in predicting Φ_k (Fig. 5). The best performing model was achieved using R and sun angles as inputs (Φ_k -R-SA, OOB

Table 2. Random forest (RF) models' statistical results for predicting $F_{yieldLIF}$. N denotes the number of data points used for the RF model's testing, Adj. R^2 represents the adjusted coefficient of determination of the relationship between the test dataset $F_{yieldLIF}$ and the predicted $F_{yieldLIF}$, OOB R^2 is the model accuracy on the validation data set (1/3 of the training set), and the RMSE is the root mean square error between observed $F_{yieldLIF}$ and RF model predicted $F_{yieldLIF}$.

Model	OOB R^2	Adj. R^2	RMSE	N
FY-R	0.86	0.87	0.016	1802
FY-R-SIF	0.87	0.88	0.016	1802
FY-R- SIF_y	0.88	0.89	0.015	1802
FY-R-SA	0.90	0.90	0.014	1802
FY-R-SA- SIF_y	0.90	0.90	0.014	1802

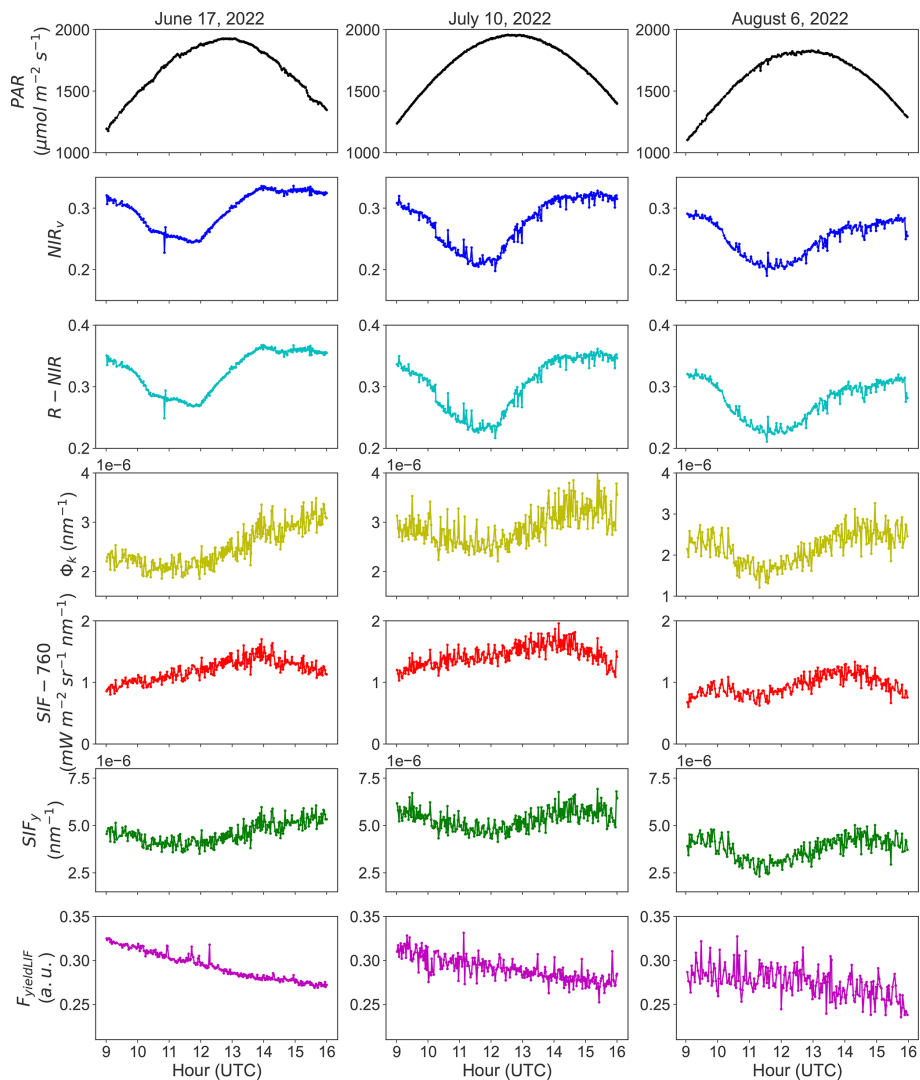


Figure 2. Presents the diurnal patterns acquired during three clear sky days of the diurnal pattern of the photosynthetically active radiation (PAR, in black), the near-infrared reflectance of vegetation index (NIR_v , in blue), the reflectance in the near-infrared ($R-NIR$, in cyan), the ratio between SIF_y and $F_{yieldLIF}$ (Φ_k , in yellow), the SIF (SIF-760, in red), the ratio of SIF over PAR (SIF_y , in green), and the active chlorophyll fluorescence ($F_{yieldLIF}$, in magenta). The data correspond to 17 June, 10 July, and 6 August 2022. The noisy signals observed on 10 July and 6 August 2022 are due to high wind speed with an average value of 2.39 and 3.27 m s^{-1} , respectively.

$R^2 = 0.69$ and adj. $R^2 = 0.70$), while R alone explained 58 % of Φ_k on the validation dataset and 62 % on the test dataset (Φ_k-R , OOB $R^2 = 0.58$ and adj. $R^2 = 0.62$). The predictor importance estimates (Fig. 5b and d) show that R_{410} , R_{740} , R_{665} , R_{705} , SZA, and SAA are the main predictors for estimating Φ_k , underlining the dependency of Φ_k on shadow effects.

4 Discussion

4.1 Relationships between SIF_y and $F_{yieldLIF}$ at instantaneous and daily timescales

The first objective of this study was to show the effects of canopy structure on the SIF signal. The relationship between SIF_y and $F_{yieldLIF}$ was investigated at the daily and seasonal timescales during the growing season from June to August. The results demonstrated that SIF_y and $F_{yieldLIF}$ were more correlated at the seasonal timescale than at the diurnal timescale. Passive SIF is highly dependent on both the structural and physiological properties of the leaf and canopy (Biriukova et al., 2021; Dechant et al., 2022). At the diurnal

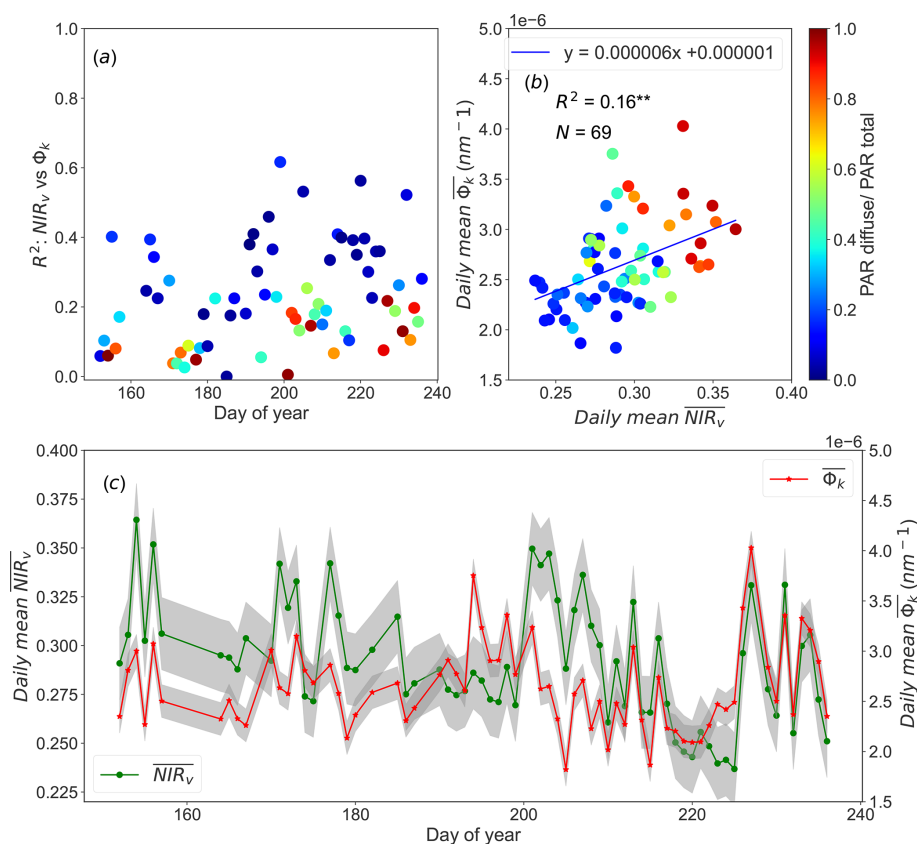


Figure 3. Panel (a) exhibits the inter-daily variations of the coefficient of determination (R^2) of the relationships between the near-infrared reflectance of vegetation index (NIR_v) and the canopy Φ_k at instantaneous scale, as a function of the fraction between diffuse and total PAR. Panel (b) presents the seasonal relationship between the daily means NIR_v and Φ_k , as a function of the fraction between diffuse and total PAR. And panel (c) shows the seasonal dynamics in $\overline{\text{NIR}}_v$ and $\overline{\Phi}_k$. The shaded area indicates the 95 % confidence interval. The asterisks stand for the statistical significance level (** = $P \leq 0.01$).

timescale, far-red SIF is strongly affected by canopy scattering and by the distribution of sunlit and shaded areas at the top and within the canopy (Dechant et al., 2020; Zhang and Zhang, 2023). This study showed that those factors strongly affected SIF_y (SIF normalized by PAR). Further, as SIF_y was estimated using PAR, but not absorbed radiations, SIF_y estimation did not consider the conditions of radiation extinction within the canopy. Therefore, the canopy structural effects can strongly blur the information on the physiological functioning of the vegetation provided by SIF_y and hence lead to low correlations between SIF_y and F_{yieldLIF} . Thus, interpreting SIF_y signal for inferring vegetation physiology at the diurnal scale should be carried out with great care, considering the effects of canopy structure and the complex interactions between structure and illumination geometry. The development of new methods and models are warranted to better explore the possibility to use SIF as a proxy for vegetation functioning at high frequency (seconds to minutes), especially when the vegetation structure is complex and heterogeneous, such as in forest stands. On the other hand, the better correlation found at the seasonal timescale can be explained by a

potential removal of short-term changes in illumination conditions, canopy structure, and sun–canopy geometry. Note that the seasonal variability of $\overline{\text{SIF}}_y$ is also driven by the seasonal changes in leaf biochemical properties and solar zenith and azimuth angles. The leaf biochemical properties can also drive the seasonal dynamics in $\overline{F}_{\text{yieldLIF}}$, leading to a better correlation. This may explain why the fraction of the diffuse to total PAR could not entirely explain the relation between $\overline{\text{SIF}}_y$ and $\overline{F}_{\text{yieldLIF}}$ (Fig. 1b). In summary, our results underlined that it is difficult to decouple vegetation structural and physiological effects in SIF, owing to fluctuations of sun–canopy geometry throughout the day at the diurnal timescale and the difficulties linked to the accurate estimation of total SIF and the fraction of absorbed PAR at the canopy scale (Chang et al., 2021).

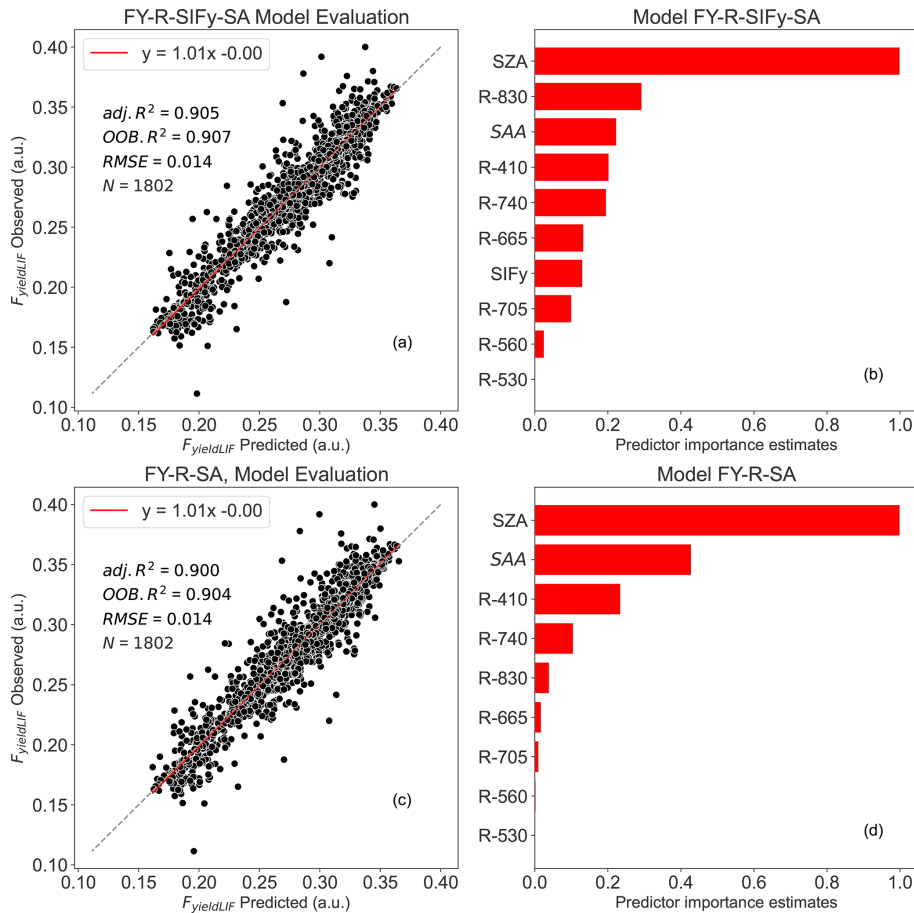


Figure 4. Random forest (RF) model outputs: panel (a) depicts the FY-R-SIF_y-SA model performance between observed and predicted F_{yieldLIF} , panel (b) represents the predictor importance estimates for FY-R-SIF_y-SA model, panel (c) represents the FY-R-SA model performance between observed and predicted F_{yieldLIF} , and panel (d) represents the predictor importance estimates for FY-R-SA model. N denotes the number of data points used for the RF model's testing, $\text{adj. } R^2$ represents the adjusted coefficient of determination of the relationship between the test dataset F_{yieldLIF} and the predicted F_{yieldLIF} , $\text{OOB } R^2$ is the model accuracy on the validation data set (1/3 of the training set), and the RMSE is the root mean square error between observed F_{yieldLIF} and RF model predicted F_{yieldLIF} . The dashed diagonal line depicts the 1 : 1 line. FY-R-SIF_y-SA denotes F_{yieldLIF} prediction using R , SIF_y, and solar angles as inputs; FY-R-SA includes R , SZA, and SAA to predict F_{yieldLIF} .

4.2 Effects of canopy structure and sun–canopy geometry on diurnal dynamics in SIF, NIR_v, R-NIR, Φ_k , SIF_y, and F_{yieldLIF}

The fraction of absorbed solar radiation by the canopy (fAPAR) and the fraction of emitted chlorophyll fluorescence that reaches the sensor heavily impact SIF. The results obtained during clear sky days revealed that NIR_v, R-NIR, and Φ_k exhibited similar diurnal patterns. This suggests that the diurnal variations in NIR_v (i.e., the product of NDVI and R-NIR) and in Φ_k (i.e., the product of fAPAR and f_{esc}) were dominated by the bidirectional NIR reflectance effect as has been shown in Chang et al. (2021). These authors pointed out that the diurnal dynamics in NIR_v were determined by the diurnal pattern of the reflectance in the NIR within maize crop rows that were under shadow conditions at midday. Sun

et al. (2023a) clearly stated that the dynamics of the fluorescence escape fraction (f_{esc}) in a homogeneous C₃ crop canopy appears to exhibit a diurnal pattern similar to directional reflectance. Further, at intra-daily timescale, Φ_k is likely to be driven by canopy structure (shadow, leaf angle distribution, etc.) and sun–canopy geometry (SZA and SAA) effects, in particular the distribution of fractions of sunlit and shaded leaves. This situation can lead to large variability of the diurnal patterns in NIR_v and Φ_k as has been shown in Fig. 2.

The results also highlighted that, at the diurnal timescale, the peaks in SIF and PAR do not match (Fig. 2), which is probably due to the effects of sun–canopy geometry. Indeed, directionality effects can induce variations in the fraction of sunlit and shaded leaves within the FOV, modulating the actual amount of radiation reaching the leaves (differ-

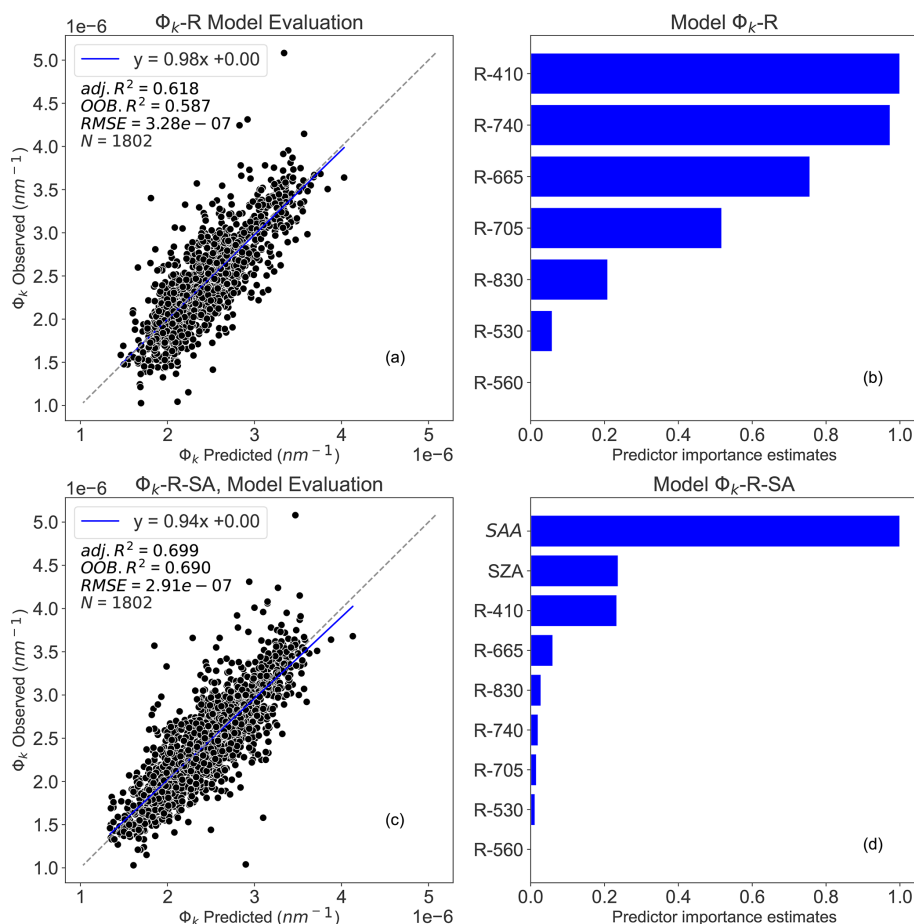


Figure 5. Random forest (RF) model outputs: panel (a) depicts the Φ_k -R model performance between observed and predicted Φ_k , panel (b) presents the predictor importance estimates for Φ_k -R model, panel (c) represents the Φ_k -R-SA model performance between observed and predicted Φ_k , and panel (d) presents the predictor importance estimates for Φ_k -R-SA model. N denotes the number of data points used for the RF model's testing, $\text{adj. } R^2$ represents the adjusted coefficient of determination of the relationship between observed and predicted Φ_k , $\text{OOB } R^2$ is the model accuracy on the validation dataset (1/3 of the training set), and the RMSE is the root mean square error between observed and RF model predicted Φ_k . The dashed diagonal line depicts the 1 : 1 line. Φ_k -R denotes Φ_k prediction using only R; Φ_k -R-SA integrates R, SZA, and SAA to estimate Φ_k .

ent from the incident radiation measured at the sensor, unaffected by shading) and therefore affecting canopy total SIF emission. This finding is in contradiction with several studies that showed that the diurnal patterns in SIF are mainly dominated by PAR (Campbell et al., 2019; Wang et al., 2021) but in agreement with Nichol et al. (2019), who showed that the peaks of PAR and SIF did not match in a Boreal Scots pine canopy. Further, note that at high incident PAR the light energy might exceed the capacity of photosynthesis. In this case, the plant photoprotective mechanism known as non-photochemical heat dissipation is activated, leading first to stomatal closure and hence to SIF emission reduction (Jonard et al., 2020; De Cannière et al., 2022).

The results also showed that the diurnal dynamics in SIF_y and F_{yieldLIF} did not match (Fig. 2). This is probably due to both physiological and canopy structure effects. The early decline of SIF_y before noon could be likely due

not only to shadow effects, but also to the fact that the PAR was high. These findings corroborate with previous studies (Loayza et al., 2023; Li et al., 2020; Moya et al., 2019). For instance, Loayza et al. (2023) found that under clear-sky conditions, at the diurnal timescale, within potato plants, firstly the chlorophyll fluorescence yield declined drastically when the PAR reached values higher than $1000 \mu\text{mol m}^{-2} \text{s}^{-1}$, and secondly F_{yieldLIF} continuously decreased for $\text{PAR} > 600 \mu\text{mol m}^{-2} \text{s}^{-1}$. Thus, the continuous decline of F_{yieldLIF} observed here (Fig. 2) is likely caused by the fact that the PAR was higher than $1250 \mu\text{mol photon m}^{-2} \text{s}^{-1}$ for the chosen days. Within this situation, the vegetation photosynthetic capacity could be overwhelmed, and the energy-dependent and non-energy-dependent non-photochemical heat dissipation can be triggered. Note that energy-dependent heat dissipation can last from a few seconds to a few minutes, while non-energy-dependent heat dis-

sipitation can lead to photoinhibition or photobleaching and can last longer (hours to weeks) (Porcar-Castell et al., 2014). Both mechanisms can induce a decrease in SIF_y and $F_{yieldLIF}$ at the diurnal timescale.

4.3 Relationships between NIR_v and Φ_k at daily and seasonal timescales

Strong correlations were found between NIR_v and Φ_k at the diurnal timescale. However, their correlations varied largely depending on the ratio of diffuse to total PAR, with high correlation corresponding to clear-sky conditions and low correlation to diffuse sky conditions. This result suggests that under clear-sky conditions NIR_v is a relatively good proxy of Φ_k and hence can be used to take canopy structure and sun–canopy geometry (i.e., crown shadow, reabsorption, and scattering within leaves and canopies) effects on SIF at the diurnal timescale into account. Indeed, with diffuse sky conditions, canopy structure, shadows, and sun–canopy geometry play a minor role in the variations in NIR_v and Φ_k , even though there are still strong fluctuations in incident light, justifying the low correlations observed between NIR_v and Φ_k during diffuse sky conditions. On the other hand, the positive weak but statistically significant correlation found between daily mean $\overline{NIR_v}$ and daily mean $\overline{\Phi_k}$ at the seasonal timescale indicates that $\overline{NIR_v}$ and $\overline{\Phi_k}$ relations were driven by the fraction between diffuse and total PAR. Indeed, this underlined well the NIR_v usage, because it was meant to correct reabsorption and scattering effects on SIF at daily and seasonal timescales (Badgley et al., 2017).

4.4 Random forest models for $F_{yieldLIF}$ and Φ_k predictions

How we can determine and properly disentangle the confounding factors, including structural, biophysical, and physiological canopy components that all contribute to remotely sensed SIF, remains a challenging task. SIF has emerged as a promising tool for determining and characterizing structural and physiological vegetation traits. However, the relationships between these confounding factors and SIF are often complex and site-specific and thus require a model with a set of parameters incorporating these complexities. Therefore, in this study, we examined the potential of RF modeling approaches to predict $F_{yieldLIF}$ and Φ_k based on different remotely sensed input variables under clear-sky conditions.

For $F_{yieldLIF}$, the RF models can explain between 86 % and 90 % of the variability in $F_{yieldLIF}$ (see Table 2 and Fig. 4), sustaining that directional reflectance, chlorophyll fluorescence, and sun–canopy geometry (SZA and SAA) can effectively capture relevant variations in $F_{yieldLIF}$. For instance, FY-*R*-SA and FY-*R*-SIF_y-SA models' predictor importance estimates showed that SZA, SAA, R_{410} , R_{740} , and R_{830} provide the most useful information for $F_{yieldLIF}$ predictions (Fig. 4). The reflectance in the blue spectral band (R_{410}) is

largely affected by the strong blue light absorption by the chlorophyll pigments and it is highly subject to leaves or canopy shadow conditions, while reflectance in the red-edge (R_{740}) and near-infrared bands characterize the leaf area index and the chlorophyll content of the entire forest (Zeng et al., 2022b). The red-edge region is mainly used to determine leaf and canopy chlorophyll contents. Because of these abovementioned characteristics of R , it is not surprising that the combination of reflectance at specific spectral bands can be used to infer effective and relevant information that allow for capturing $F_{yieldLIF}$ variations. The data also revealed that adding SIF or SIF_y as predictors did not significantly improve the model performance estimates as it has been shown in Balde et al. (2023). This result indicates that even at high temporal resolution the contribution of SIF or SIF_y is important compared to each reflectance band individually, but the combined effect of reflectance bands could mitigate or hide the use of SIF as vegetation physiological proxy. The results showed that SZA and SAA significantly improved the model prediction for $F_{yieldLIF}$ (FY-*R*-SA). First, the contribution of SZA can be attributed to the illumination conditions, because incoming radiation is tightly related to SZA. Second, the effect of SAA is attributable to the anisotropy in reflectance and canopy structure in the azimuthal plane.

For Φ_k , results indicate that RF models can explain between 60 % and 70 % of the variability in Φ_k (Fig. 5a and b). The unexplained 30 % or 40 % in Φ_k variance evidenced that the ratio SIF_y over $F_{yieldLIF}$ strongly varies and depends on several factors, including canopy structure, sun geometry, and illumination conditions. Therefore, this suggests that mechanistic models that used NIR_v to approximate the product of fAPAR and f_{esc} are simplistic and do not fully account for the complex interactions between incident radiation and canopy structure, notably due to the distribution of light and shaded leaves at the top and inside of the forest canopy.

5 Conclusions

In this work, the simultaneous and continuous active and passive measurements of chlorophyll fluorescence at the canopy scale in a sessile oak mature forest allowed us to analyze the diurnal cycles of key variables, including SIF, SIF_y, NIR_v , and $F_{yieldLIF}$. A novel remote sensing indicator, Φ_k , the ratio between SIF_y and $F_{yieldLIF}$, which is also theoretically the product of fAPAR and f_{esc} , was introduced. On the one hand, the relationship between SIF_y and $F_{yieldLIF}$ was evaluated, and on the other hand, the relation between NIR_v and Φ_k was examined at daily and seasonal scales. Further, several random forest models with reflectances, SIF, and sun angles as inputs were also used to not only predict $F_{yieldLIF}$ and Φ_k , but also to provide sensitivity analysis and interpretation of the model outputs.

The results showed that the SIF signal is highly impacted by the canopy structure and the sun–canopy geometry ef-

fects, as evidenced by the weak correlations found between SIF_y and $F_{yieldLIF}$ at diurnal timescale using instantaneous measurements. However, SIF_y captured the seasonal dynamics of $F_{yieldLIF}$ by explaining 58 % of the variations in $F_{yieldLIF}$. The results also revealed that NIR_v and reflectance at near-infrared ($R-NIR$) are good proxies of Φ_k at the diurnal timescale, while their correlations diverged at the seasonal scale.

Based on random forest models, the combination of reflectance, chlorophyll fluorescence, and sun geometry (SZA and SAA) allow us to predict $F_{yieldLIF}$ and Φ_k at the diurnal timescale under clear-sky conditions. For instance, the RF models were able to explain 86 %–90 % of $F_{yieldLIF}$ variability, and 60 %–70 % of Φ_k variations were explained. Furthermore, the data also revealed that adding SIF or SIF_y as predictors did not improve much the model performance compared to the reflectance-based model. But the predictor importance estimates showed that SIF and SIF_y provide useful and impactful information in determining $F_{yieldLIF}$. This result indicates that even at high temporal resolution the contribution of SIF or SIF_y is important compared to each reflectance band individually, but the combined effect of reflectance bands could mitigate or hide the use of SIF as vegetation functioning proxy.

Overall, this study provides insights into understanding the complex and difficult relationship that exists between passive SIF and active chlorophyll fluorescence, as well as into the use of remote sensing data that are readily accessible at the satellite scale (spectral reflectance at 10 nm resolution, sun geometry, and chlorophyll fluorescence) to predict $F_{yieldLIF}$ and Φ_k at the canopy scale.

Code and data availability. The computer codes (MATLAB and Python) used in this study are available upon request from the corresponding author.

Supplement. The supplement related to this article is available online at: <https://doi.org/10.5194/bg-21-1259-2024-supplement>.

Author contributions. Conceptualization: all co-authors; methodology: HB, GH, YG, KS; instrument design and development: YG, AO, GL, GH; software: HB and GH; validation: HB; formal analysis: HB; investigation: HB; resources: HB, GH, YG, KS; data curation: HB and GH; writing (original draft preparation): HB; writing (reviewing and editing): all co-authors; visualization: HB; supervision: KS, YG, GH, GL; project administration: YG and KS; funding acquisition: YG and KS. All authors have read and agreed to the final version of the manuscript.

Competing interests. The contact author has declared that none of the authors has any competing interests.

Disclaimer. Publisher's note: Copernicus Publications remains neutral with regard to jurisdictional claims made in the text, published maps, institutional affiliations, or any other geographical representation in this paper. While Copernicus Publications makes every effort to include appropriate place names, the final responsibility lies with the authors.

Acknowledgements. We warmly thank Daniel Berveiller, Nicolas Delpierre, Alexandre Morfin, and Clotilde Pérot-Guillaume for their participation on data acquisition and management at Barbeau forest site.

Financial support. This ongoing PhD work is jointly funded by the “Centre National d’Études Spatiales” (CNES) and ACRI-ST (Toulouse, France) (contract CNES-ACRI-ST-Ecole polytechnique-CNRS no. 3425). This work was also supported by CNES through the VELIF project focused on the FLEX mission (contract nos. 4500073234 and 4500073501), The “Program National de Télédétection Spatiales” (PNTS) across the C-FLEX project and EIT Climate-KIC project via the Agriculture Resilience, Inclusive, and Sustainable Enterprise (ARISE) project (EIT 190733).

Review statement. This paper was edited by Xi Yang and reviewed by two anonymous referees.

References

- Aasen, H., Van Wittenberghe, S., Sabater Medina, N., Damm, A., Goulas, Y., Wieneke, S., Hueni, A., Malenovský, Z., Alonso, L., Pacheco-Labrador, J., Cendrero-Mateo, M. P., Tomelleri, E., Burkart, A., Cogliati, S., Rascher, U., and Mac Arthur, A.: Sun-Induced Chlorophyll Fluorescence II: Review of Passive Measurement Setups, Protocols, and Their Application at the Leaf to Canopy Level, *Remote Sens.*, 11, 927, <https://doi.org/10.3390/rs11080927>, 2019.
- Badgley, G., Field, C. B., and Berry, J. A.: Canopy near-infrared reflectance and terrestrial photosynthesis, *Sci. Adv.*, 3, e1602244, <https://doi.org/10.1126/sciadv.1602244>, 2017.
- Baker, N. R.: Chlorophyll Fluorescence: A Probe of Photosynthesis In Vivo, *Ann. Rev. Plant Biol.*, 59, 89–113, <https://doi.org/10.1146/annurev.arplant.59.032607.092759>, 2008.
- Balde, H., Hmimina, G., Goulas, Y., Latouche, G., and Soudani, K.: Synergy between TROPOMI sun-induced chlorophyll fluorescence and MODIS spectral reflectance for understanding the dynamics of gross primary productivity at Integrated Carbon Observatory System (ICOS) ecosystem flux sites, *Biogeosciences*, 20, 1473–1490, <https://doi.org/10.5194/bg-20-1473-2023>, 2023.
- Biriukova, K., Pacheco-Labrador, J., Migliavacca, M., Mahecha, M. D., Gonzalez-Cascon, R., Martín, M. P., and Rossini, M.: Performance of Singular Spectrum Analysis in Separating Seasonal and Fast Physiological Dynamics of Solar-Induced Chlorophyll Fluorescence and PRI Optical Signals, *J. Geophys. Res.-Biogeo.*, 126, e2020JG006158, <https://doi.org/10.1029/2020JG006158>, 2021.

- Breiman, L.: Random Forests, *Mach. Learn.*, 45, 5–32, <https://doi.org/10.1023/A:1010933404324>, 2001.
- Campbell, P., Huemmrich, K., Middleton, E., Ward, L., Julitta, T., Daughtry, C., Burkart, A., Russ, A., and Kustas, W.: Diurnal and Seasonal Variations in Chlorophyll Fluorescence Associated with Photosynthesis at Leaf and Canopy Scales, *Remote Sens.*, 11, 488, <https://doi.org/10.3390/rs11050488>, 2019.
- Chang, C. Y., Wen, J., Han, J., Kira, O., LeVonne, J., Melkonian, J., Riha, S. J., Skovira, J., Ng, S., Gu, L., Wood, J. D., Nätke, P., and Sun, Y.: Unpacking the drivers of diurnal dynamics of sun-induced chlorophyll fluorescence (SIF): Canopy structure, plant physiology, instrument configuration and retrieval methods, *Remote Sens. Environ.*, 265, 112672, <https://doi.org/10.1016/j.rse.2021.112672>, 2021.
- Cogliati, S., Verhoef, W., Kraft, S., Sabater, N., Alonso, L., Vicent, J., Moreno, J., Drusch, M., and Colombo, R.: Retrieval of sun-induced fluorescence using advanced spectral fitting methods, *Remote Sens. Environ.*, 169, 344–357, <https://doi.org/10.1016/j.rse.2015.08.022>, 2015.
- Damm, A., Guanter, L., Paul-Limoges, E., van der Tol, C., Hueni, A., Buchmann, N., Eugster, W., Ammann, C., and Schaepman, M. E.: Far-red sun-induced chlorophyll fluorescence shows ecosystem-specific relationships to gross primary production: An assessment based on observational and modeling approaches, *Remote Sens. Environ.*, 166, 91–105, <https://doi.org/10.1016/j.rse.2015.06.004>, 2015.
- Daumard, F., Goulas, Y., Champagne, S., Fournier, A., Ounis, A., Oliosio, A., and Moya, I.: Continuous Monitoring of Canopy Level Sun-Induced Chlorophyll Fluorescence During the Growth of a Sorghum Field, *IEEE Trans. Geosci. Remote Sens.*, 50, 4292–4300, <https://doi.org/10.1109/TGRS.2012.2193131>, 2012.
- De Cannière, S., Vereecken, H., Defourny, P., and Jonard, F.: Remote Sensing of Instantaneous Drought Stress at Canopy Level Using Sun-Induced Chlorophyll Fluorescence and Canopy Reflectance, *Remote Sens.*, 14, 2642, <https://doi.org/10.3390/rs14112642>, 2022.
- Dechant, B., Ryu, Y., Badgley, G., Zeng, Y., Berry, J. A., Zhang, Y., Goulas, Y., Li, Z., Zhang, Q., Kang, M., Li, J., and Moya, I.: Canopy structure explains the relationship between photosynthesis and sun-induced chlorophyll fluorescence in crops, *Remote Sens. Environ.*, 241, 111733, <https://doi.org/10.1016/j.rse.2020.111733>, 2020.
- Dechant, B., Ryu, Y., Badgley, G., Köhler, P., Rascher, U., Migliavacca, M., Zhang, Y., Tagliabue, G., Guan, K., Rossini, M., Goulas, Y., Zeng, Y., Frankenberg, C., and Berry, J. A.: NIRVP: A robust structural proxy for sun-induced chlorophyll fluorescence and photosynthesis across scales, *Remote Sens. Environ.*, 268, 112763, <https://doi.org/10.1016/j.rse.2021.112763>, 2022.
- Delpierre, N., Berveiller, D., Granda, E., and Dufréne, E.: Wood phenology, not carbon input, controls the interannual variability of wood growth in a temperate oak forest, *New Phytol.*, 210, 459–470, <https://doi.org/10.1111/nph.13771>, 2016.
- Drusch, M., Moreno, J., Del Bello, U., Franco, R., Goulas, Y., Huth, A., Kraft, S., Middleton, E. M., Miglietta, F., Mohammed, G., Nedbal, L., Rascher, U., Schuttemeyer, D., and Verhoef, W.: The FLuorescence EXplorer Mission Concept – ESA’s Earth Explorer 8, *IEEE Trans. Geosci. Remote Sens.*, 55, 1273–1284, <https://doi.org/10.1109/TGRS.2016.2621820>, 2017.
- Frankenberg, C., Fisher, J. B., Worden, J., Badgley, G., Saatchi, S. S., Lee, J.-E., Toon, G. C., Butz, A., Jung, M., Kuze, A., and Yokota, T.: New global observations of the terrestrial carbon cycle from GOSAT: Patterns of plant fluorescence with gross primary productivity: CHLOROPHYLL FLUORESCENCE FROM SPACE, *Geophys. Res. Lett.*, 38, L17706, <https://doi.org/10.1029/2011GL048738>, 2011.
- Gao, S., Huete, A., Kobayashi, H., Doody, T. M., Liu, W., Wang, Y., Zhang, Y., and Lu, X.: Simulation of solar-induced chlorophyll fluorescence in a heterogeneous forest using 3-D radiative transfer modelling and airborne LiDAR, *ISPRS J. Photogramm. Remote Sens.*, 191, 1–17, <https://doi.org/10.1016/j.isprsjprs.2022.07.004>, 2022.
- Goulas, Y., Fournier, A., Daumard, F., Champagne, S., Ounis, A., Marloie, O., and Moya, I.: Gross Primary Production of a Wheat Canopy Relates Stronger to Far Red Than to Red Solar-Induced Chlorophyll Fluorescence, *Remote Sens.*, 9, 97, <https://doi.org/10.3390/rs9010097>, 2017.
- Guanter, L., Zhang, Y., Jung, M., Joiner, J., Voigt, M., Berry, J. A., Frankenberg, C., Huete, A. R., Zarco-Tejada, P., Lee, J.-E., Moran, M. S., Ponce-Campos, G., Beer, C., Camps-Valls, G., Buchmann, N., Gianelle, D., Klumpp, K., Cescatti, A., Baker, J. M., and Griffis, T. J.: Global and time-resolved monitoring of crop photosynthesis with chlorophyll fluorescence, *P. Natl. Acad. Sci. USA*, 111, E1327–E1333, <https://doi.org/10.1073/pnas.1320008111>, 2014.
- He, L., Magney, T., Dutta, D., Yin, Y., Köhler, P., Grossmann, K., Stutz, J., Dold, C., Hatfield, J., Guan, K., Peng, B., and Frankenberg, C.: From the Ground to Space: Using Solar-Induced Chlorophyll Fluorescence to Estimate Crop Productivity, *Geophys. Res. Lett.*, 47, e2020GL087474, <https://doi.org/10.1029/2020GL087474>, 2020.
- Jonard, F., De Cannière, S., Brüggemann, N., Gentine, P., Short Gianotti, D. J., Lobet, G., Miralles, D. G., Montzka, C., Pagán, B. R., Rascher, U., and Vereecken, H.: Value of sun-induced chlorophyll fluorescence for quantifying hydrological states and fluxes: Current status and challenges, *Agr. Forest Meteorol.*, 291, 108088, <https://doi.org/10.1016/j.agrformet.2020.108088>, 2020.
- Li, X. and Xiao, J.: TROPOMI observations allow for robust exploration of the relationship between solar-induced chlorophyll fluorescence and terrestrial gross primary production, *Remote Sens. Environ.*, 268, 112748, <https://doi.org/10.1016/j.rse.2021.112748>, 2022.
- Li, Z., Zhang, Q., Li, J., Yang, X., Wu, Y., Zhang, Z., Wang, S., Wang, H., and Zhang, Y.: Solar-induced chlorophyll fluorescence and its link to canopy photosynthesis in maize from continuous ground measurements, *Remote Sens. Environ.*, 236, 111420, <https://doi.org/10.1016/j.rse.2019.111420>, 2020.
- Lin, J., Shen, Q., Wu, J., Zhao, W., and Liu, L.: Assessing the Potential of Downscaled Far Red Solar-Induced Chlorophyll Fluorescence from the Canopy to Leaf Level for Drought Monitoring in Winter Wheat, *Remote Sens.*, 14, 1357, <https://doi.org/10.3390/rs14061357>, 2022.
- Liu, Y., Chen, J. M., He, L., Zhang, Z., Wang, R., Rogers, C., Fan, W., de Oliveira, G., and Xie, X.: Non-linearity between gross primary productivity and far-red solar-induced chlorophyll fluorescence emitted from canopies of major biomes, *Remote Sens. Environ.*, 271, 112896, <https://doi.org/10.1016/j.rse.2022.112896>, 2022.

- Loayza, H., Moya, I., Quiroz, R., Ounis, A., and Goulas, Y.: Active and passive chlorophyll fluorescence measurements at canopy level on potato crops. Evidence of similitude of diurnal cycles of apparent fluorescence yields, *Photos. Res.*, 155, 271–288, <https://doi.org/10.1007/s11120-022-00995-8>, 2023.
- Lopez Gonzalez, M. d. I. L.: Seguimiento del estrés hídrico en la vid mediante técnicas de fluorescencia de la clorofila y otros métodos ópticos, Thesis, Universidad de Castilla-La-Mancha, Albacete, <https://ruidera.uclm.es/items/38a54238-b996-4d8f-8076-ada1630f4073> (last access: 9 March 2024), 2015.
- Lu, X., Liu, Z., Zhao, F., and Tang, J.: Comparison of total emitted solar-induced chlorophyll fluorescence (SIF) and top-of-canopy (TOC) SIF in estimating photosynthesis, *Remote Sens. Environ.*, 251, 112083, <https://doi.org/10.1016/j.rse.2020.112083>, 2020.
- Magney, T. S., Frankenberg, C., Fisher, J. B., Sun, Y., North, G. B., Davis, T. S., Kornfeld, A., and Siebke, K.: Connecting active to passive fluorescence with photosynthesis: a method for evaluating remote sensing measurements of Chl fluorescence, *New Phytol.*, 215, 1594–1608, <https://doi.org/10.1111/nph.14662>, 2017.
- Maysonave, J., Delpierre, N., François, C., Jourdan, M., Cornut, I., Bazot, S., Vincent, G., Morfin, A., and Berveiller, D.: Contribution of deep soil layers to the transpiration of a temperate deciduous forest: quantification and implications for the modelling of productivity, *Ecology*, bioRxiv 2022.02.14.480025, <https://doi.org/10.1101/2022.02.14.480025>, 2022.
- Mengistu, A. G., Mengistu Tsidu, G., Koren, G., Kooreman, M. L., Boersma, K. F., Tagesson, T., Ardö, J., Nouvellon, Y., and Peters, W.: Sun-induced fluorescence and near-infrared reflectance of vegetation track the seasonal dynamics of gross primary production over Africa, *Biogeosciences*, 18, 2843–2857, <https://doi.org/10.5194/bg-18-2843-2021>, 2021.
- Meroni, M., Rossini, M., Guanter, L., Alonso, L., Rascher, U., Colombo, R., and Moreno, J.: Remote sensing of solar-induced chlorophyll fluorescence: Review of methods and applications, *Remote Sens. Environ.*, 113, 2037–2051, <https://doi.org/10.1016/j.rse.2009.05.003>, 2009.
- Miao, G., Guan, K., Suyker, A. E., Yang, X., Arkebauer, T. J., Walter-Shea, E. A., Kimm, H., Hmimina, G. Y., Gamon, J. A., Franz, T. E., Frankenberg, C., Berry, J. A., and Wu, G.: Varying Contributions of Drivers to the Relationship Between Canopy Photosynthesis and Far-Red Sun-Induced Fluorescence for Two Maize Sites at Different Temporal Scales, *J. Geophys. Res.-Biogeo.*, 125, e2019JG005051, <https://doi.org/10.1029/2019JG005051>, 2020.
- Morozumi, T., Kato, T., Kobayashi, H., Sakai, Y., Tsujimoto, K., Nakashima, N., Buareal, K., Lan, W., and Ninomiya, H.: Row orientation influences the diurnal cycle of solar-induced chlorophyll fluorescence emission from wheat canopy, as demonstrated by radiative transfer modeling, *Agr. Forest Meteorol.*, 339, 109576, <https://doi.org/10.1016/j.agrformet.2023.109576>, 2023.
- Moya, I., Loayza, H., López, M. L., Quiroz, R., Ounis, A., and Goulas, Y.: Canopy chlorophyll fluorescence applied to stress detection using an easy-to-build micro-lidar, *Photosynth. Res.*, 142, 1–15, <https://doi.org/10.1007/s11120-019-00642-9>, 2019.
- Nichol, C. J., Drolet, G., Porcar-Castell, A., Wade, T., Sabater, N., Middleton, E. M., MacLellan, C., Levula, J., Mammarella, I., Vesala, T., and Atherton, J.: Diurnal and Seasonal Solar Induced Chlorophyll Fluorescence and Photosynthesis in a Boreal Scots Pine Canopy, *Remote Sens.*, 11, 273, <https://doi.org/10.3390/rs11030273>, 2019.
- Ounis, A., Evain, S., Flexas, J., Tosti, S., and Moya, I.: Adaptation of a PAM-fluorometer for remote sensing of chlorophyll fluorescence, *Photosyn. Res.*, 68, 113–120, <https://doi.org/10.1023/A:1011843131298>, 2001.
- Ounis, A., Bach, J., Mahjoub, A., Daumard, F., Moya, I., and Goulas, Y.: Combined use of LIDAR and hyperspectral measurements for remote sensing of fluorescence and vertical profile of canopies, *Rev. Teledetec.*, 87, 87–94, <https://doi.org/10.4995/raet.2015.3982>, 2016.
- Paul-Limoges, E., Damm, A., Hueni, A., Liebisch, F., Eugster, W., Schaepman, M. E., and Buchmann, N.: Effect of environmental conditions on sun-induced fluorescence in a mixed forest and a cropland, *Remote Sens. Environ.*, 219, 310–323, <https://doi.org/10.1016/j.rse.2018.10.018>, 2018.
- Porcar-Castell, A., Tyystjärvi, E., Atherton, J., van der Tol, C., Flexas, J., Pfündel, E. E., Moreno, J., Frankenberg, C., and Berry, J. A.: Linking chlorophyll a fluorescence to photosynthesis for remote sensing applications: mechanisms and challenges, *J. Exp. Bot.*, 65, 4065–4095, <https://doi.org/10.1093/jxb/eru191>, 2014.
- Rascher, U., Alonso, L., Burkart, A., Cilia, C., Cogliati, S., Colombo, R., Damm, A., Drusch, M., Guanter, L., Hanus, J., Hyvärinen, T., Julitta, T., Jussila, J., Kataja, K., Kokkalis, P., Kraft, S., Kraska, T., Matveeva, M., Moreno, J., Müller, O., Panigada, C., Píkl, M., Pinto, F., Prey, L., Pude, R., Rossini, M., Schickling, A., Schurr, U., Schüttemeyer, D., Verrelst, J., and Zemek, F.: Sun-induced fluorescence – a new probe of photosynthesis: First maps from the imaging spectrometer *HyPlant*, *Glob. Change Biol.*, 21, 4673–4684, <https://doi.org/10.1111/gcb.13017>, 2015.
- Soudani, K., Hmimina, G., Dufrière, E., Berveiller, D., Delpierre, N., Ourcival, J.-M., Rambal, S., and Joffre, R.: Relationships between photochemical reflectance index and light-use efficiency in deciduous and evergreen broadleaf forests, *Remote Sens. Environ.*, 144, 73–84, <https://doi.org/10.1016/j.rse.2014.01.017>, 2014.
- Soudani, K., Delpierre, N., Berveiller, D., Hmimina, G., Pontailler, J.-Y., Seureau, L., Vincent, G., and Dufrière, É.: A survey of proximal methods for monitoring leaf phenology in temperate deciduous forests, *Biogeosciences*, 18, 3391–3408, <https://doi.org/10.5194/bg-18-3391-2021>, 2021.
- Sun, Y., Gu, L., Wen, J., van der Tol, C., Porcar-Castell, A., Joiner, J., Chang, C. Y., Magney, T., Wang, L., Hu, L., Rascher, U., Zarco-Tejada, P., Barrett, C. B., Lai, J., Han, J., and Luo, Z.: From remotely sensed solar-induced chlorophyll fluorescence to ecosystem structure, function, and service: Part I – Harnessing theory, *Glob. Change Biol.*, 29, 2926–2952, <https://doi.org/10.1111/gcb.16634>, 2023a.
- Sun, Y., Wen, J., Gu, L., Joiner, J., Chang, C. Y., van der Tol, C., Porcar-Castell, A., Magney, T., Wang, L., Hu, L., Rascher, U., Zarco-Tejada, P., Barrett, C. B., Lai, J., Han, J., and Luo, Z.: From remotely-sensed solar-induced chlorophyll fluorescence to ecosystem structure, function, and service: Part II – Harnessing data, *Glob. Change Biol.*, 29, 2893–2925, <https://doi.org/10.1111/gcb.16646>, 2023b.
- Ustin, S. L. and Middleton, E. M.: Current and near-term advances in Earth observation for ecological applications, *Ecol. Process.*, 10, 1–57, <https://doi.org/10.1186/s13717-020-00255-4>, 2021.

- Verma, M., Schimel, D., Evans, B., Frankenberg, C., Beringer, J., Drewry, D. T., Magney, T., Marang, I., Hutley, L., Moore, C., and Eldering, A.: Effect of environmental conditions on the relationship between solar-induced fluorescence and gross primary productivity at an OzFlux grassland site: OCO SIF, MODIS, and GPP, *J. Geophys. Res.-Biogeo.*, 122, 716–733, <https://doi.org/10.1002/2016JG003580>, 2017.
- Wang, N., Suomalainen, J., Bartholomeus, H., Kooistra, L., Masiliūnas, D., and Clevers, J. G. P. W.: Diurnal variation of sun-induced chlorophyll fluorescence of agricultural crops observed from a point-based spectrometer on a UAV, *Int. J. Appl. Earth Obs.*, 96, 102276, <https://doi.org/10.1016/j.jag.2020.102276>, 2021.
- Wang, X., Biederman, J. A., Knowles, J. F., Scott, R. L., Turner, A. J., Dannenberg, M. P., Köhler, P., Frankenberg, C., Litvak, M. E., Flerchinger, G. N., Law, B. E., Kwon, H., Reed, S. C., Parton, W. J., Barron-Gafford, G. A., and Smith, W. K.: Satellite solar-induced chlorophyll fluorescence and near-infrared reflectance capture complementary aspects of dryland vegetation productivity dynamics, *Remote Sens. Environ.*, 270, 112858, <https://doi.org/10.1016/j.rse.2021.112858>, 2022.
- Wood, J. D., Griffis, T. J., Baker, J. M., Frankenberg, C., Verma, M., and Yuen, K.: Multiscale analyses of solar-induced fluorescence and gross primary production: Multiscale GPP-SIF RELATIONS, *Geophys. Res. Lett.*, 44, 533–541, <https://doi.org/10.1002/2016GL070775>, 2017.
- Xu, S., Atherton, J., Riikonen, A., Zhang, C., Oivukkamäki, J., MacArthur, A., Honkavaara, E., Hakala, T., Koivumäki, N., Liu, Z., and Porcar-Castell, A.: Structural and photosynthetic dynamics mediate the response of SIF to water stress in a potato crop, *Remote Sens. Environ.*, 263, 112555, <https://doi.org/10.1016/j.rse.2021.112555>, 2021.
- Yang, H., Yang, X., Zhang, Y., Heskell, M. A., Lu, X., Munger, J. W., Sun, S., and Tang, J.: Chlorophyll fluorescence tracks seasonal variations of photosynthesis from leaf to canopy in a temperate forest, *Glob. Change Biol.*, 23, 2874–2886, <https://doi.org/10.1111/gcb.13590>, 2017.
- Yang, P. and van der Tol, C.: Linking canopy scattering of far-red sun-induced chlorophyll fluorescence with reflectance, *Remote Sens. Environ.*, 209, 456–467, <https://doi.org/10.1016/j.rse.2018.02.029>, 2018.
- Yang, P., van der Tol, C., Campbell, P. K. E., and Middleton, E. M.: Fluorescence Correction Vegetation Index (FCVI): A physically based reflectance index to separate physiological and non-physiological information in far-red sun-induced chlorophyll fluorescence, *Remote Sens. Environ.*, 240, 111676, <https://doi.org/10.1016/j.rse.2020.111676>, 2020.
- Yazbeck, T., Bohrer, G., Gentine, P., Ye, L., Arriga, N., Bernhofer, C., Blanken, P. D., Desai, A. R., Durden, D., Knohl, A., Kowalska, N., Metzger, S., Mölder, M., Noormets, A., Novick, K., Scott, R. L., Šigut, L., Soudani, K., Ueyama, M., and Varlagin, A.: Site Characteristics Mediate the Relationship Between Forest Productivity and Satellite Measured Solar Induced Fluorescence, *Front. For. Glob. Change*, 4, 695269, <https://doi.org/10.3389/ffgc.2021.695269>, 2021.
- Zeng, Y., Badgley, G., Dechant, B., Ryu, Y., Chen, M., and Berry, J. A.: A practical approach for estimating the escape ratio of near-infrared solar-induced chlorophyll fluorescence, *Remote Sens. Environ.*, 232, 111209, <https://doi.org/10.1016/j.rse.2019.05.028>, 2019.
- Zeng, Y., Chen, M., Hao, D., Damm, A., Badgley, G., Rascher, U., Johnson, J. E., Dechant, B., Siegmann, B., Ryu, Y., Qiu, H., Krieger, V., Panigada, C., Celesti, M., Miglietta, F., Yang, X., and Berry, J. A.: Combining near-infrared radiance of vegetation and fluorescence spectroscopy to detect effects of abiotic changes and stresses, *Remote Sens. Environ.*, 270, 112856, <https://doi.org/10.1016/j.rse.2021.112856>, 2022a.
- Zeng, Y., Hao, D., Huete, A., Dechant, B., Berry, J., Chen, J. M., Joiner, J., Frankenberg, C., Bond-Lamberty, B., Ryu, Y., Xiao, J., Asrar, G. R., and Chen, M.: Optical vegetation indices for monitoring terrestrial ecosystems globally, *Nat. Rev. Earth Environ.*, 3, 477–493, <https://doi.org/10.1038/s43017-022-00298-5>, 2022b.
- Zhang, Y., Zhang, Q., Liu, L., Zhang, Y., Wang, S., Ju, W., Zhou, G., Zhou, L., Tang, J., Zhu, X., Wang, F., Huang, Y., Zhang, Z., Qiu, B., Zhang, X., Wang, S., Huang, C., Tang, X., and Zhang, J.: ChinaSpec: a Network for Long-term Ground-based Measurements of Solar-induced Fluorescence in China, *J. Geophys. Res.-Biogeo.*, 126, e2020JG006042, <https://doi.org/10.1029/2020JG006042>, 2021.
- Zhang, Z. and Zhang, Y.: Solar angle matters: Diurnal pattern of solar-induced chlorophyll fluorescence from OCO-3 and TROPOMI, *Remote Sens. Environ.*, 285, 113380, <https://doi.org/10.1016/j.rse.2022.113380>, 2023.