



HAL
open science

Chronic ischemic ileitis after ileocecal resection and ileocolic anastomosis.

Sebastian Vuola, Lucile Héroin, Francois Habersetzer, Guillaume Philouze, Pierre Mayer

► **To cite this version:**

Sebastian Vuola, Lucile Héroin, Francois Habersetzer, Guillaume Philouze, Pierre Mayer. Chronic ischemic ileitis after ileocecal resection and ileocolic anastomosis.. *Endoscopy*, 2023, 55 (S 01), <10.1055/a-2078-1024>. <hal-04524170>

HAL Id: hal-04524170

<https://hal.science/hal-04524170v1>

Submitted on 27 Mar 2024

HAL is a multi-disciplinary open access archive for the deposit and dissemination of scientific research documents, whether they are published or not. The documents may come from teaching and research institutions in France or abroad, or from public or private research centers.

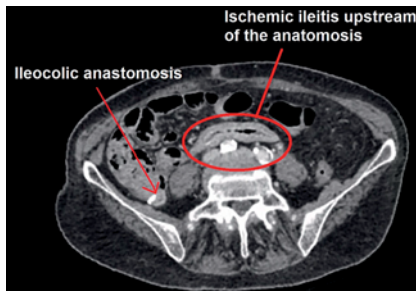
L'archive ouverte pluridisciplinaire **HAL**, est destinée au dépôt et à la diffusion de documents scientifiques de niveau recherche, publiés ou non, émanant des établissements d'enseignement et de recherche français ou étrangers, des laboratoires publics ou privés.



HAL Authorization

Chronic ischemic ileitis after ileocecal resection and ileocolic anastomosis

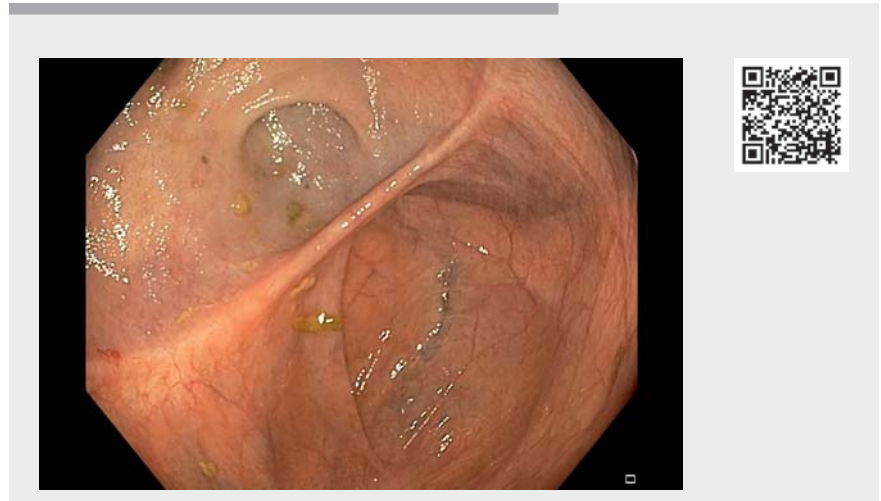
OPEN
ACCESS



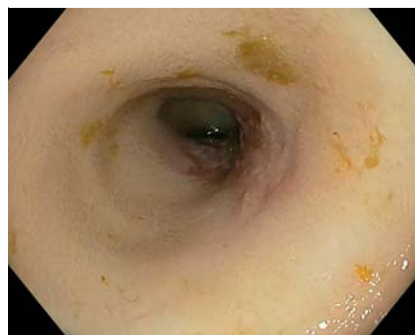
► **Fig. 1** Abdominopelvic computed tomography scan showing thickened aspect of the ileal mucosa in front of the ileocolic anastomosis, corresponding to postsurgical ischemic damage of the ileum.

The management of precancerous colonic lesions has radically changed with the progress in endoscopy, especially therapeutic endoscopy. Large or suspected polyps were formerly managed surgically. Endoscopic submucosal dissection has completely changed the management of this kind of lesion, exposing patients to fewer postoperative complications.

We report the case of a 76-year-old woman with a history of ileocecal resection with ileocolic anastomosis for benign cecal tumor. A few years later, she presented with chronic abdominal pain, clinically significant weight loss, and recurrent digestive bleeding requiring hospitalization for repeated transfusions [1]. An initial colonoscopy performed during a hemorrhagic period revealed large and longitudinal ulcers on the ileal side of the ileocolic anastomosis. On the anastomosis, there was bleeding ulceration requiring the placement of a clip. Some biopsy samples were taken on the terminal ileum. Histological examination revealed fibrino-granulocytic and necrotic tissue originating from the bottom or the edges of an ulcer. Abdominopelvic computed tomography showed terminal ileitis, without occlusion of a digestive vessel (► **Fig. 1**). Conservative treatment was proposed given the patient's poor gener-



► **Video 1** Chronic ileal ischemia following cecal resection with ileocolic anastomosis for huge polyp.



► **Fig. 2** Appearance of chronic ischemia of the terminal ileum, with pale mucosa and no vascularization.



► **Fig. 3** Endoscopic view of the ischemic ileitis, with no bleeding after biopsies (red circles) typical of ischemic phenomena.

al condition and important cardiovascular comorbidities.

Unfortunately, symptoms did not improve with medical treatment. A second colonoscopy was performed a few months later (► **Video 1**) and revealed chronic ischemia. The mucosa appeared thin, atrophic, pale, and without vascularization as evidenced by the absence of bleeding during the biopsies (► **Fig. 2**, ► **Fig. 3**). In addition, we found a supracentimetric ulcer associated with a fibrous ileal stenosis [2, 3]. After a multi-

disciplinary board meeting, surgical management with resection of the ischemic ileum and creation of a new anastomosis was planned.

This is the first reported description of chronic ischemic ileitis after resection of a noncancerous colonic lesion. It illustrates the importance of endoscopic management of precancerous lesions by endoscopic submucosal dissection, thus avoiding more invasive management and allowing organ preservation.

Endoscopy_UCTN_Code_CCL_1AD_2AF

Competing interests

The authors declare that they have no conflict of interest.

The authors

Sebastian Vuola^{1,2}, **Lucile Héroin**^{1,2}, **François Habersetzer**^{1,2,3}, **Guillaume Philouze**^{2,4}, **Pierre Mayer**^{1,2}

- 1 Department of Hepatology and Gastroenterology, Pôle Hépatodigestif, Nouvel Hôpital Civil, Hôpitaux Universitaires de Strasbourg (HUS), Strasbourg, France
- 2 IHU-Strasbourg (Institut Hospitalo-Universitaire), Strasbourg, France
- 3 Inserm U1110, Institute for Viral and Liver Diseases, LabEx HepSYS, University of Strasbourg, Faculty of Medicine, Strasbourg, France
- 4 Department of Visceral and Digestive Surgery, Pôle Hépatodigestif, Nouvel Hôpital Civil, HUS, Strasbourg, France

Corresponding author

Pierre Mayer, MD

Department of Hepatology and Gastroenterology, Pôle Hépatodigestif, Nouvel Hôpital Civil, Hôpitaux Universitaires de Strasbourg (HUS), 1, place de l'Hôpital, 67000 Strasbourg, France
pierre-emmanuel.mayer@chru-strasbourg.fr

References

- [1] Terlouw LG, Moelker A, Abrahamsen J et al. European guidelines on chronic mesenteric ischaemia – joint United European Gastroenterology, European Association for Gastroenterology, Endoscopy and Nutrition, European Society of Gastrointestinal and Abdominal Radiology, Netherlands Association of Hepatogastroenterologists, Hellenic Society of Gastroenterology, Cardiovascular and Interventional Radiological Society of Europe, and Dutch Mesenteric Ischemia Study Group clinical guidelines on the diagnosis and treatment of patients with chronic mesenteric ischaemia. *United Eur Gastroenterol J* 2020; 8: 371–395
- [2] Trotter JM, Hunt L, Peter MB. Ischaemic colitis. *BMJ* 2016; 355: i6600
- [3] Theodoropoulou A, Koutroubakis I-E. Ischemic colitis: clinical practice in diagnosis and treatment. *World J Gastroenterol* 2008; 14: 7302–7308

Bibliography

Endoscopy 2023; 55: E729–E730

DOI 10.1055/a-2078-1024

ISSN 0013-726X

© 2023. The Author(s).

This is an open access article published by Thieme under the terms of the Creative Commons Attribution License, permitting unrestricted use, distribution, and reproduction so long as the original work is properly cited.

(<https://creativecommons.org/licenses/by/4.0/>)

Georg Thieme Verlag KG, Rüdigerstraße 14, 70469 Stuttgart, Germany



ENDOSCOPY E-VIDEOS

<https://eref.thieme.de/e-videos>



E-Videos is an open access online section of the journal *Endoscopy*, reporting on interesting cases

and new techniques in gastroenterological endoscopy. All papers include a high-quality video and are published with a Creative Commons CC-BY license. Endoscopy E-Videos qualify for HINARI discounts and waivers and eligibility is automatically checked during the submission process. We grant 100% waivers to articles whose corresponding authors are based in Group A countries and 50% waivers to those who are based in Group B countries as classified by Research4Life (see: <https://www.research4life.org/access/eligibility/>).

This section has its own submission website at

<https://mc.manuscriptcentral.com/e-videos>