



**HAL**  
open science

## The impact of boldness on demographic rates and life-history outcomes in the wandering albatross

Joanie van de Walle, Ruijiao Sun, Rémi Fay, Samantha C Patrick, Christophe Barbraud, Karine Delord, Henri Weimerkirch, Stephanie Jenouvrier

### ► To cite this version:

Joanie van de Walle, Ruijiao Sun, Rémi Fay, Samantha C Patrick, Christophe Barbraud, et al.. The impact of boldness on demographic rates and life-history outcomes in the wandering albatross. *Journal of Animal Ecology*, 2024, 10.1111/1365-2656.14077 . hal-04521677

**HAL Id: hal-04521677**

**<https://hal.science/hal-04521677>**

Submitted on 26 Mar 2024

**HAL** is a multi-disciplinary open access archive for the deposit and dissemination of scientific research documents, whether they are published or not. The documents may come from teaching and research institutions in France or abroad, or from public or private research centers.

L'archive ouverte pluridisciplinaire **HAL**, est destinée au dépôt et à la diffusion de documents scientifiques de niveau recherche, publiés ou non, émanant des établissements d'enseignement et de recherche français ou étrangers, des laboratoires publics ou privés.

## RESEARCH ARTICLE

# The impact of boldness on demographic rates and life-history outcomes in the wandering albatross

Joanie Van de Walle<sup>1,2</sup>  | Ruijiao Sun<sup>1,3,4</sup>  | Rémi Fay<sup>5,6</sup>  | Samantha C. Patrick<sup>7</sup> |  
Christophe Barbraud<sup>8</sup>  | Karine Delord<sup>8</sup>  | Henri Weimerkirch<sup>8</sup> | Stephanie Jenouvrier<sup>1</sup> 

<sup>1</sup>Biology Department, Woods Hole Oceanographic Institution, Woods Hole, Massachusetts, USA; <sup>2</sup>Department of Fisheries and Oceans Canada, Maurice-Lamontagne Institute, Mont-Joli, Quebec, Canada; <sup>3</sup>Department of Earth, Atmospheric and Planetary Science, Massachusetts Institute of Technology, Cambridge, Massachusetts, USA; <sup>4</sup>Marine Science Institute, University of California Santa Barbara, Santa Barbara, California, USA; <sup>5</sup>Centre for Biodiversity Dynamics, Department of Biology, Norwegian University of Science and Technology, Trondheim, Norway; <sup>6</sup>Laboratoire de Biometrie et Biologie Evolutive, UMR CNRS 5558, Université Lyon 1, Villeurbanne, France; <sup>7</sup>School of Environmental Sciences, University of Liverpool, Liverpool, UK and <sup>8</sup>Centre d'Etudes Biologiques de Chizé, CNRS-La Rochelle University UMR 7372, Villiers en Bois, France

**Correspondence**

Joanie Van de Walle

Email: [jvandewalle@whoi.edu](mailto:jvandewalle@whoi.edu)**Funding information**

National Science Foundation, Grant/Award Number: GEO-NERC 1951500 and OPP 1840058; Institut Polaire Français Paul-Emile Victor; Zone Atelier Antarctique

**Handling Editor:** Fernando Colchero**Abstract**

1. Differences among individuals within a population are ubiquitous. Those differences are known to affect the entire life cycle with important consequences for all demographic rates and outcomes. One source of among-individual phenotypic variation that has received little attention from a demographic perspective is animal personality, which is defined as consistent and heritable behavioural differences between individuals. While many studies have shown that individual variation in individual personality can generate individual differences in survival and reproductive rates, the impact of personality on all demographic rates and outcomes remains to be assessed empirically.
2. Here, we used a unique, long-term, dataset coupling demography and personality of wandering albatross (*Diomedea exulans*) in the Crozet Archipelago and a comprehensive analysis based on a suite of approaches (capture-mark-recapture statistical models, Markov chains models and structured matrix population models). We assessed the effect of boldness on annual demographic rates (survival, breeding probability, breeding success), life-history outcomes (life expectancy, lifetime reproductive outcome, occupancy times), and an integrative demographic outcome (population growth rate).
3. We found that boldness had little impact on female demographic rates, but was very likely associated with lower breeding probabilities in males. By integrating the effects of boldness over the entire life cycle, we found that bolder males had slightly lower lifetime reproductive success compared to shyer males. Indeed, bolder males spent a greater proportion of their lifetime as non-breeders, which suggests longer inter-breeding intervals due to higher reproductive allocation.

This is an open access article under the terms of the [Creative Commons Attribution](https://creativecommons.org/licenses/by/4.0/) License, which permits use, distribution and reproduction in any medium, provided the original work is properly cited.

© 2024 The Authors. *Journal of Animal Ecology* published by John Wiley & Sons Ltd on behalf of British Ecological Society.

4. Our results reveal that the link between boldness and demography is more complex than anticipated by the pace-of-life literature and highlight the importance of considering the entire life cycle with a comprehensive approach when assessing the role of personality on individual performance and demography.

#### KEYWORDS

demography, fitness, life history, pace-of-life, personality, population growth rate

## 1 | INTRODUCTION

Demographic rates are not equal between individuals and this variation is typically brought about by phenotypic differences (Hamel et al., 2018). The recognition that different individuals contribute differently to population growth motivated the development of, for example, age- (Leslie, 1945; Lotka, 1939), stage- (Caswell, 2001; Lefkovich, 1965) and size- (Easterling et al., 2018) structured population models. One source of among-individual phenotypic variation that has received little attention from a demographic perspective is animal personality, which is defined as consistent and heritable behavioural differences between individuals (Sih et al., 2004). Some individuals are, for example, consistently more aggressive, more explorative, and bolder than others. Those personality differences, because they may dictate how individuals respond towards risks and allocate resources, are expected to correlate with survival rates, reproductive performance, and life-history strategies (Stamps, 2007; Wolf et al., 2007). Many empirical studies have shown behaviourally or personality-associated differential survival and reproductive performance (Ellis et al., 2017; Niemelä et al., 2015; Réale et al., 2009; Santicchia et al., 2018; Smith & Blumstein, 2008).

Comprehensive assessments of the effect of among-individual differences over the entire life cycle (i.e. over survival and reproductive parameters simultaneously) and on multiple facets of individual performance are critical to understand the role of personality in shaping demography, but also to assess the selective pressures at play (Santicchia et al., 2018). This is because individual fitness is multidimensional, integrating both performance in survival and reproduction (Mcgraw & Caswell, 1996). Consequently, antagonistic effects (or trade-offs) between demographic rates can arise (Jenouvrier et al., 2018; Sebens et al., 2018), and the expression of a given phenotype can increase one aspect of individual performance while decreasing another (e.g. Van de Walle et al., 2018). In the case of personality, its consistent nature across contexts and situations may lead to trade-offs, for example between survival and reproduction, making the cumulative effect hard to predict. This is because expressing one behaviour can be rewarding in one context or situation, but costly in another (Sih et al., 2004). Those trade-offs are thought to play an important role in the maintenance of among-individual variation in personality at the population level (Sih et al., 2004; Stamps, 2007; Wolf et al., 2007).

The shy-bold continuum (Wilson et al., 1994) is among the most studied axes of animal personalities and is expected to have

implications for individual life histories. Those expectations are theoretically grounded in the pace-of-life syndrome (POLS) framework, which stipulates that the shy-bold axis of individual variation should correlate with a slow-fast continuum of life-history strategies, with bolder individuals showing faster life cycles (e.g. shorter lifespan, higher reproductive rates) compared to shyer individuals (Dammhahn et al., 2018; Réale et al., 2010). This is because the risk-proneness of bolder individuals is thought to facilitate resource acquisition and, consequently, body condition and reproductive success at the cost of higher vulnerability to mortality factors (Biro & Stamps, 2008; Réale et al., 2010; Stamps, 2007). In a meta-analysis of published empirical studies, Smith and Blumstein (2008) reported clear evidence of relationships between personality and fitness and concluded that, in general, bolder individuals, and especially bolder males, have higher reproductive success, but suffer a higher survival cost. However, these relationships only held in captive populations and not in wild populations. More recently, a meta-analysis by Moiron et al. (2020) focusing on the correlation between among-individual variation in personality and survival found that across species, risky behavioural types, including boldness, did not lead to lower survival rates. In fact, in wild populations, individuals expressing riskier behaviours had higher survival rates, with no sex-specific differences. Therefore, the link between personality and survival may be more complex than we would expect and vary across species, contexts and systems (Dhellemmes et al., 2021; Dingemanse, 2021; Laskowski et al., 2021). More empirical studies are needed to better understand the relationship between personality and individual performance in wild populations.

The wandering albatross (*Diomedea exulans*) is a long-lived seabird species in which personality has been linked to many aspects of its biology. In this species, boldness has been shown to be repeatable and heritable (Patrick et al., 2013), and to correlate with pair-bond maintenance (Sun, Van de Walle, et al., 2022), parental care behaviours (McCully et al., 2022), and foraging behaviours (Patrick et al., 2017; Weimerskirch et al., 2023). Foraging behaviours, by reflecting an individual's ability to acquire resources, should have cascading effects on reproduction and survival. As for pair-bond dynamics and parental care, they play a central role in reproduction in monogamous species, such as the wandering albatross (Sun, Barbraud, et al., 2022). A link between boldness and reproductive success has been established in the wandering albatross, with bolder males having greater reproductive success compared to shyer males in late life (Patrick & Weimerskirch, 2015). However, whether boldness also affects other demographic rates remains unknown and antagonistic effects can be

expected. For instance, fishery bycatch is an important source of mortality in albatrosses (Barbraud et al., 2012) and boldness may increase the vulnerability of birds to this type of mortality. We know that passive harvest can unintentionally claim more deaths of individuals of a certain personality type, with bolder individuals being typically more vulnerable compared to shy individuals (reviewed in Leclerc et al., 2017). Assessing the demographic role of personality and whether it is under selection thus requires the simultaneous incorporation of the multiple pathways through which boldness can influence demographic rates, individual performance and population dynamics.

Here, based on a unique long-term demographic and personality dataset, we investigated the demographic impact of boldness in the wandering albatross. We used a comprehensive approach, investigating the effect of boldness over different time scales and levels of organization. At the individual level, we explored (1) short-term consequences with annual demographic rates: survival, breeding probability, and breeding success probability. We also explored (2) long-term consequences over the lifetime of individuals through life expectancy and lifetime reproductive outcomes and (3) the relative proportion of lifetime spent in the different reproductive states and the time between breeding events. Finally, at the population level, we computed the effect of boldness on an integrative demographic outcome, namely the population growth rate. We relied on several demographic approaches, including multi-event capture-mark-recapture (MECMR) models, absorbing Markov chains (AMC), and structured matrix population models. Following predictions from the POLS literature, the previously established links between boldness and reproductive success (Patrick & Weimerskirch, 2015), and expected higher vulnerability to bycatch for bolder individuals, we predicted that bolder wandering albatrosses would have lower survival rates, but higher breeding probabilities and breeding success. However, it is difficult to make general predictions as to the role of personality on more integrative measures of fitness, (e.g. lifetime reproductive success, population growth rate), as antagonistic effects between parameters over the life cycle (e.g. a trade-off between survival and reproduction) could arise and generate unexpected consequences (Jenouvrier, 2013).

## 2 | MATERIALS AND METHODS

We investigated the demographic role of boldness in four steps. First, we estimated the effect of boldness on three annual adult demographic rates (survival, breeding probability, and breeding success probability) using Bayesian MECMR models. Second, relying on AMC and boldness-specific demographic rates calculated from the MECMR, we assessed the role of personality on life-history outcomes (expected life expectancy and lifetime reproductive success). Third, to further understand how boldness affects individual life histories, we explored transient state transitions (i.e. how individuals transit between the different breeding states within the life cycle during their lifetime) of bold versus shy individuals again within an AMC framework. Specifically, for shy versus bold individuals, we

estimated the relative proportion of their lifetime spent in the different reproductive states (e.g. breeder vs. non-breeder), as well as their average interval of time between breeding events. Fourth, as another integrative demographic outcome, we assessed the overall performance of different boldness scores by calculating the population growth rate ( $\lambda$ ) for theoretical populations composed of only individuals of a given boldness value.

### 2.1 | Study system and species monitoring

We studied the entire breeding population of wandering albatrosses from Possession Island (46°24' S, 52°46' E), in the Crozet Archipelago, south-western Indian Ocean. The breeding season, from egg laying to chick fledging, lasts almost a year (Weimerskirch, 2018) and most breeders take a sabbatical year at sea after a successful breeding event (Tickell, 1968). However, a small proportion of successful breeders can breed the next year, and thus the wandering albatross is considered a quasi-biennial breeder (Barbraud & Weimerskirch, 2012).

At Possession Island, a capture-mark-recapture (CMR) program has been undertaken since 1966 (Weimerskirch, 2018). Fledglings and adults are banded annually using individually coded stainless-steel leg rings. Birds are monitored, and their reproductive status determined, during the breeding season. Between January and February, that is right after egg laying, nests are visited three to four times to determine the identities of breeding birds. Chicks are ringed in September and October prior to fledging in November–December. Breeding success is determined based on chick survival until fledging. Each year, unmarked individuals found at the colony are also ringed. Sex is based on morphology and genetic assessment (Weimerskirch et al., 2005). We relied on data collected from 1966 to 2020 on 11,591 individuals (8697 males and 2894 females). Licences and permissions for capture and handling of animals were granted by the Ethic Committee of Institut Polaire Francais (IPEV) and by the Préfet of Terres australes et antarctiques francaises (TAAF) after advice from the Comité de l'Environnement Polaire (CEP).

### 2.2 | Personality assessment

Since 2008, boldness of breeding wandering albatrosses has been assessed for 1746 individuals (931 males and 815 females) through personality tests. During incubation, breeding individuals were approached on foot and their reaction towards human approaches was evaluated on a scale from 0 to 4 (0=no response, 1=lifts the head, 2=stands on tarsus, 3=vocalizes, and 4=stands up). The higher the score, the bolder the individual (Patrick et al., 2013). Those scores were then adjusted to control for differences between observers and observation number, and were standardized (mean=0, SD=1) prior to analyses. For adult wandering albatrosses, boldness in reaction to human approaches is correlated to that in reaction to a novel object. Boldness is also highly repeatable

(Patrick et al., 2013) and assumed as fixed over an individual's life as a previous study did not find evidence of change in boldness with age (Patrick & Weimerskirch, 2015). More information on personality assessment can be found in Patrick et al. (2013).

### 2.3 | Life cycle of the wandering albatross

All the demographic analyses were based on the wandering albatross life cycle (Figure 1). In a species life cycle, individuals move between a specific set of stages over the course of a time step (here a year), conditional on transition probabilities. The wandering albatross life cycle includes age classes and breeding states. Annual transitions are from year  $t$  to  $t + 1$  and depend on survival ( $\alpha$ ) and changes in individual breeding status, which are determined by breeding probability ( $\beta$ ), and breeding success probability ( $\gamma$ ). Breeding probability is the probability that an individual at time  $t$  returns to the colony to breed at time  $t + 1$ , whereas breeding success probability represents the probability that an individual breeding at time  $t + 1$  raises successfully a chick until fledging. In each year  $t$ , individuals of any age  $a$  were classified into six breeding states  $s$ :

1. Pre-breeder (**PB**): individuals that have not yet started to breed. Pre-breeders are of age classes one and over.
2. Successful breeder (**SB**): adults that have bred and successfully fledged a chick in year  $t$ . As wandering albatrosses can start to breed (i.e. lay an egg for the first time) at 6 years-old (Fay et al., 2016), individuals can only reach this state upon age 6 years-old and older.
3. Failed breeder (**FB**): adults that have bred, but failed to successfully fledge a chick in year  $t$ . As for **SB**, individuals can only reach this state at the age of 6 years old and older.
4. Post-successful breeder (**PSB**): adults during their sabbatical year after having successfully fledged a chick at year  $t - 1$ . Individuals can only reach this state at the age of 7 years old and older.
5. Post-failed breeder (**PFB**): adults during their sabbatical year after having failed to successfully fledge a chick at year  $t - 1$ . As for **PSB**, individuals can only reach this state at the age of 7 years old and older.
6. Non-breeder (**NB**): adults that are still not breeding after a sabbatical year, after states **PSB** or **PFB**. Individuals in this state are adults of age 8 years-old and older.

### 2.4 | A CMR model to estimate demographic rates

Demographic rates, that is survival ( $\alpha$ ), breeding probability ( $\beta$ ) and breeding success probability ( $\gamma$ ) were estimated using Bayesian MECMR models. Survival and breeding probabilities vary with age in the wandering albatross, but the pattern of age variation differs between survival and breeding probabilities (Fay et al., 2015, 2016; Patrick & Weimerskirch, 2015). Therefore, we estimated survival, breeding probabilities, and breeding success probabilities

for different age classes based on those previous studies. For pre-breeders, we used the same age classes as in Fay et al. (2015): four age classes for survival (age classes 1–2, 3–8, 9–13, and 14+), and five age classes for breeding parameters (age classes 6, 7, 8, 9 and 10+). For pre-breeders of age classes 1 through 5 (i.e. juveniles) we set breeding probabilities and breeding success probabilities at 0 due to immaturity (Fay et al., 2016). For adults, we considered three age classes. Wandering albatrosses show signs of survival senescence after age 30 (Pardo et al., 2013). Thus, for survival, we followed Fay et al. (2015) and Pardo et al. (2013) and used the following age classes: 7–8, 9–30 and 31+, with the age class 31+ consisting of senescent individuals. Breeding senescence occurs at age 22 (Patrick & Weimerskirch, 2015), thus for breeding probability and breeding success probability we considered age classes 7–10, 11–21, and 22+.

Survival and breeding probabilities can vary depending on the breeding states of the birds. Therefore, we estimated survival, breeding probabilities, and breeding success for each of the five adult breeding states separately. Due to the computational demands and extended runtime of Bayesian models, we performed an initial model selection using a frequentist approach in E-Surge Version 2.0 (Choquet et al., 2009) to identify constraints in demographic rates between the different breeding states (Figure 1). A step-down model selection was performed using quasi-Akaike information criterion (QAIC) as a criterion for model selection. Results from model selection are shown in Supporting Information S1. From the best-supported model (i.e. lowest QAIC value), survival rates were found to be similar between breeding states SB and FB, and between PSB and PFB, whereas they were different for PB and NB individuals. Breeding probabilities were different for each breeding state. Breeding success probabilities were similar between PSB and PFB, but were different for all other reproductive states (PB, SB, FB and NB). For each demographic rate, the respective constraints identified from the model selection were then used in the Bayesian MECMR framework in a second step. For example, survival rate for SB and FB were constrained to be equal in the Bayesian model.

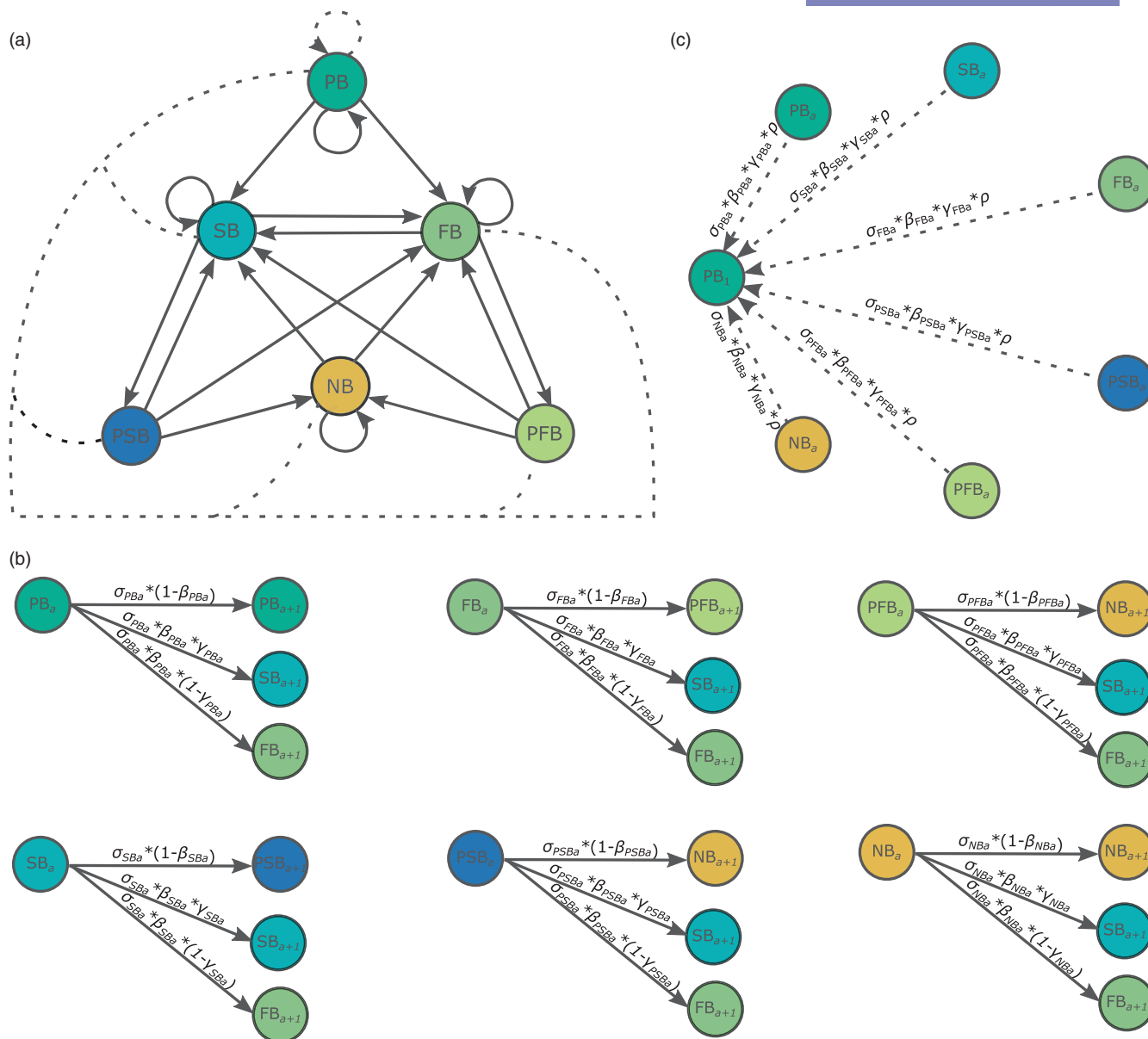
All demographic rates were modelled following Bernoulli distributions. Survival was modelled as:

$$(\text{Alive}_{k,t} | \text{Alive}_{k,t-1} = 1) \sim \text{Bernoulli}(\text{logit}^{-1}(\mu_{\alpha,a,s})) \quad (1)$$

where  $\text{Alive}_{k,t}$  indicates whether an individual  $k$  survived (1) or died (0) from year  $t - 1$  to year  $t$  conditional on its previous survival ( $\text{Alive}_{k,t-1} = 1$ ) and  $\mu_{\alpha,a,s}$  is the logit transform mean survival rate of individuals of age  $a$  and state  $s$ . Conditional on being alive, individual  $k$  may breed following an additional Bernoulli process:

$$(\text{Breed}_{k,t} | \text{Alive}_{k,t} = 1) \sim \text{Bernoulli}(\text{logit}^{-1}(\mu_{\beta,a,s})) \quad (2)$$

where  $\text{Breed}_{k,t}$  indicates whether an individual  $k$  has breed (1) or not (0) in year  $t$  and  $\mu_{\beta,a,s}$  is the logit transform mean breeding probability of individuals of age  $a$  and state  $s$ . Following the same logic, conditional on breeding, individual  $i$  may be successful at fledging a chick following a third Bernoulli process:



**FIGURE 1** Life cycle graph (a) along with state (b) and fertility (c) transitions for the wandering albatross. In (a) are shown annual reproductive state transitions between pre-breeder (PB), successful breeders (SB), failed breeders (FB), post-successful breeders (PSB), post-failed breeders (PFB) and non-breeders (NB). Solid arrows show state transitions, whereas dashed arrows represent fertilities (i.e. the contribution of each state to the pre-breeder state). The life cycle presented is a simplified version; the true life cycle further includes an additive age structure. This means that each annual transition is conditional on age-specific ( $a$ ) vital rates ( $\alpha$ =survival,  $\beta$ =breeding probability,  $\gamma$ =breeding success probability), which are shown in (b). From each reproductive state, an individual can transit from year  $t$  to year  $t + 1$  (or from age  $a$  to age  $a + 1$ ) to a non-breeding state (PB, PSB, PFB or NB) or a breeding state (SB or FB) depending on survival and breeding probabilities associated with its state and age  $a$  at year  $t$ . If the individual breeds, then the individual can transit the next year to either a successful breeder or a failed breeder, depending on its age and reproductive state-specific breeding success probability. In (c) are fertility transitions and represent the contribution of individuals of age  $a$  to the first age class of pre-breeders, PB1, which are fledged chicks. Fledgling production is conditional on the following suite of events: (1) survival, (2) breeding and (3) breeding successfully. The parameter  $\rho$  stands for offspring sex ratio, which here was assumed as 0.5.

$$(\text{Success}_{k,t} | \text{Breed}_{k,t} = 1) \sim \text{Bernoulli}(\text{logit}^{-1}(\mu_{\gamma,a,s})) \quad (3)$$

where  $\text{Success}_{k,t}$  indicates whether an individual  $k$  has successfully fledged a chick (1) or not (0) in year  $t$  and  $\mu_{\gamma,a,s}$  is the logit transform mean breeding success probability of individuals of age  $a$  and state  $s$ .

For recruited individuals, we investigated the linear effect of boldness on each demographic rate ( $\theta$ ), that is  $\alpha$ ,  $\beta$  or  $\gamma$ , by including boldness ( $B$ ) as an additive individual covariate:

$$\theta_{k,t} \sim \text{Bernoulli}(\text{logit}^{-1}(\mu_{\theta,a,s} + \rho_{\theta} \times B_k)) \quad (4)$$



where  $\mu_{\theta,a,s}$  is the mean demographic rate of individuals of age  $a$  and state  $s$ ,  $\rho_{\theta}$  is the linear effect of boldness on the vital rate, and  $B_k$  is the boldness score of individual  $k$ . The parameter  $\rho_{\theta}$  was assumed constant across breeding states and age classes. We verified whether the effect of boldness on demographic rates differed among age classes by adding an interaction term between boldness and age in the models and found little statistical support for the inclusion of such interaction (Supporting Information S2). Therefore, to limit model complexity, we kept a constant impact of boldness across all age classes.

Along with the vital rates, we also estimated detection probability,  $p_k$ , which is the probability of observing an individual depending on its reproductive state  $s$ . For pre-breeders, we considered 6 age classes (1–5, 6, 7, 8, 9, 10+) for detection probability. For recruited individuals, detection probability was assumed fixed for all age classes. We also assumed detection to be equal between SB and FB (set to 1), and between PSB and PFB (set to 0).

To maintain the statistical independence among female and male life histories, we built and separately ran one model per sex. Because personality has only been measured on breeding adults since 2008, our analysis focused on testing the impact of personality on demographic rates exclusively in the adult phase of the life cycle. Therefore, we split the juvenile and adult components of the population and estimated their respective demographic rates into separate models. This allowed us to consider the whole life-history dataset during the entire study period (1965–2020) to estimate juvenile demographic rates. Individuals born after 2016 were not considered for the estimation of juvenile demographic rates because their low detection rates between age classes 1 through 5 can lead to underestimated survival rates. For adults, we restricted the analyses to the 2008–2020 period using the life histories of individuals with a personality score. To further reduce model complexity and runtime, we examined the influence of personality on each demographic adult rates separately. Thus, a total of eight models were built: three models to test the effect of boldness on survival, breeding probability, and breeding success probability for adults of each sex, and two models for juveniles (one for each sex).

MECMR analyses were conducted in JAGS (Plummer, 2003) from R (R Core Team, 2021) using the R package “jagsUI” (Kellner, 2021). MECMR models assume a closed population, that is there is no emigration or immigration. This is a reasonable assumption in the wandering albatross from Crozet as a previous study have found high philopatry in adults at this colony (Gauthier et al., 2010). By computing male and female models separately, we also assumed that their demographic rates are independent of each other. Further, with such models, survival estimates represent apparent survival due to imperfect detection. We used Markov chain Monte Carlo (MCMC) methods for posterior sampling. For each model, we ran 3 parallel chains with 20,000 iterations, a burn-in phase of 4000, and a thinning interval of 2 for a total of 24,000 iterations. Convergence was confirmed by visual examination of the posterior distributions and the Gelman-Rubin statistic, with a R-hat lower than 1.1 indicating that convergence was reached (Brooks & Gelman, 1998). Evidence for covariate effects was gauged by the proportion of the posterior

distribution that had the same sign as the posterior mean (referred to as the F-statistics). We followed the Intergovernmental Panel on Climate Change (IPCC) terminology (IPCC, 2021) to determine the likelihood of an effect and considered 66%–100% as likely, 90%–100% as very likely, 95%–100% as extremely likely, and 99%–100% as virtually certain.

## 2.5 | Predictions of boldness-specific demographic rates

Further investigation of the role of personality in demographic outcomes relied on a set of boldness-specific demographic rates. We used the parameters estimated from the MECMR model to predict adult demographic rates over a range of boldness scores. We randomly drew values from the posterior distributions for intercept and boldness effect (on the logit scale) in adults. Then, for each age- ( $a$ ) and state- ( $s$ ) we predicted demographic rates for each boldness score  $B$  as follows:

$$\alpha_{a,s,B} = \text{logit}^{-1}(\mu_{\alpha,s,b} + \rho_{\alpha} \times B) \quad (5)$$

$$\beta_{a,s,B} = \text{logit}^{-1}(\mu_{\beta,s,b} + \rho_{\beta} \times B) \quad (6)$$

$$\gamma_{a,s,B} = \text{logit}^{-1}(\mu_{\gamma,s,b} + \rho_{\gamma} \times B) \quad (7)$$

For life-history outcomes (life expectancy and lifetime reproductive success) and population growth rate, we predicted 1000 boldness-specific demographic rates for each of 100 values of boldness ranging from  $-3$  to  $3$ . For state transitions analyses, we contrasted extreme shy ( $B = -3$ ) and extreme bold ( $B = 3$ ) individuals and results were averaged across 1000 model-based predictions.

## 2.6 | An absorbing Markov chain to estimate life-history outcomes

To assess the impact of boldness on life-history outcomes and state occupancy times, we used an Absorbing Markov chain framework, following Caswell (2009) and Roth and Caswell (2018). Specifically, we calculated life expectancy, mean lifetime reproductive success, expected proportion of time spent in each reproductive state in an individual's lifetime and breeding return times (i.e. expected time required for a breeder to return to breeding) for individuals expressing different boldness scores  $B$ .

The life cycle can be formulated as a Markov chain to extract life-history outcomes (Caswell, 2009). A Markov chain model tracks the trajectory of a particle (here, an individual) as it transits among a pre-defined set of states. In this stochastic process, future movements are solely determined by the current state and are independent from past movements. The transient matrix  $\mathbf{U}$  contains live annual transitions between the states and can be extracted directly from the life cycle. In an absorbing Markov chain, an absorbing state (here a

death state) is added to the life cycle and individuals reaching such state remain there indefinitely (they become “absorbed”). We built a separate Markov chain models for each boldness score, assuming that all individuals within a given boldness score share the same vital rates. Let  $\mathbf{U}_B$  be the transient matrix for individuals of boldness score  $B$ . The transient matrix includes all the demographic rates predicted for the given boldness score  $B$  (see Section 2.5), except for pre-breeders who were assigned average parameter values estimated in the juvenile models given the absence of boldness measurements for this category of individuals. The transition matrix for the absorbing Markov chain can be calculated from  $\mathbf{U}_B$  as follows:

$$\mathbf{P}_B = \begin{pmatrix} \mathbf{U}_B & \mathbf{0} \\ \mathbf{m}_B & \mathbf{1} \end{pmatrix} \quad (8)$$

where  $\mathbf{m}_B$  is a mortality vector whose entries are the probabilities of mortality for individuals of personality  $B$  within each stage.

Based on the concept of AMC, we can examine several meaningful life-history characteristics. For instance, using the personality-specific demographic rates estimated above, we can examine for individuals of different personalities  $B$  how long it takes before death and the dynamics of transitions between the different states prior to death. As individuals progress in time (e.g. age), they randomly move between the different stages following the probability distributions associated with each stage transition. Individuals can “visit” some stages multiple times over their lifetime. The fundamental matrix  $\mathbf{N}_B$  gives occupancy times, that is the average number of occasions (years) an individual of personality  $B$  is expected to visit one (or several) stages over its lifetime given it starts at a specific initial stage. The matrix  $\mathbf{N}_B$  can be obtained from the matrix  $\mathbf{U}_B$  as follows:

$$\mathbf{N}_B = (\mathbf{I} - \mathbf{U}_B^{-1}) \quad (9)$$

Summing over all  $i$  for any given initial stage  $j$  in the matrix  $\mathbf{N}_B$  gives the number of years individuals of personality  $B$  are expected to live from the moment they reach stage  $j$ . Here, we estimated life expectancy by summing occupancy times over all stages starting from the stage PB1 (fledglings). The wandering albatross life cycle explicitly includes a successful breeding state (SB), which means that the fundamental matrix  $\mathbf{N}_B$  also gives information about the total number of years individuals are expected to successfully produce fledglings (Jenouvrier et al., 2018). Since wandering albatrosses only produce one chick per year, expected lifetime reproductive success can be calculated by summing occupancy times across all SB stages (SB of age classes 7 through 31+).

To better understand individual lifetime allocation to reproduction and how this is affected by boldness, we contrasted for extreme bold versus shy individuals the proportion of their adult lifetime spent in each reproductive state. Starting from each of successful or failed breeder stages (i.e. SB7 to SB31+ and FB7 to FB31+), we divided the total time spent in each adult state (SB, FB, PSB, PFB and NB) by the adult life expectancy (sum of time spent in all adult stages). Then, those proportions were averaged across the initial

stages to produce an average occupancy time in each reproductive state for extreme bold and shy individuals.

Also, to further understand the role of boldness in breeding, we calculated the time it takes for extreme shy versus bold individuals to breed again after either failing or succeeding at fledging a chick. This calculation relied on the estimation of return times, that is the time between two visits in a target set of stages, which is described in detail in Roth and Caswell (2018). Briefly, within the absorbing Markov chain framework, we defined a new set of stages as absorbing, that is once an individual reached one of those stages, the iterative process stopped and the individual could no longer move between stages in the next time step (it was “absorbed”, as for the death state). Individuals can reach those stages through many different paths. For example, some individuals can reach an absorbing stage after 1 year, and others after multiple years, depending on the stage transition probabilities. Here, we set breeding stages (SB7 to SB 31+ and FB7 to FB31+) as absorbing and estimated the average time it took before reaching any of those absorbing stages along all possible paths for extreme bold and shy individuals starting as either (1) successful breeders or (2) failed breeders.

## 2.7 | A matrix population model to estimate population growth rate

To assess the role of boldness on the overall performance of individuals expressing different boldness scores, we used structured matrix population models. For each of 100 simulated boldness scores ( $B$ ) within the interval  $-3$  and  $3$ , we built one population matrix model  $\mathbf{A}_B$ . The population matrix  $\mathbf{A}_B$  projects the vector of population size  $\mathbf{n}_B$  from year  $t$  to year  $t + 1$  and is a function of the vector of parameters  $\theta_B$ , so that:

$$\mathbf{n}_{B,t+1} = \mathbf{A}_B \mathbf{n}_{B,t} \quad (10)$$

where

$$\mathbf{A}_B = \mathbf{U}_B + \mathbf{F}_B \quad (11)$$

with the matrices  $\mathbf{U}_B$  representing the annual transitions of live individuals and  $\mathbf{F}_B$  representing fertilities (i.e. the production of new individuals) for boldness score  $B$ . The full population matrix can be found in Supporting Information S3. In each population matrix  $\mathbf{A}_B$ , we included 16 age classes for the PB stage, leaving the 16th age class open-ended to account for late recruitment. For adults, we included 25 age classes for each of SB, FB, PSB, PFB and NB stages, starting at age class 7 (pre-breeders can only become breeders between age class 6 at time  $t$  and age class 7 at time  $t + 1$ ), and leaving the last age class 31+ open-ended. This resulted in 125 age/stage combinations for adults and a  $\mathbf{A}_B$  age and stage matrix of total dimension 141 by 141. Population growth rate was calculated at equilibrium as the dominant eigenvalue of the matrix  $\mathbf{A}_B$ . We used MATLAB (The MathWorks Inc, 2022) for demographic analyses and relied on occupancy time codes provided in Roth and Caswell (2018). Figures were made in R (R Core Team, 2021).



### 3 | RESULTS

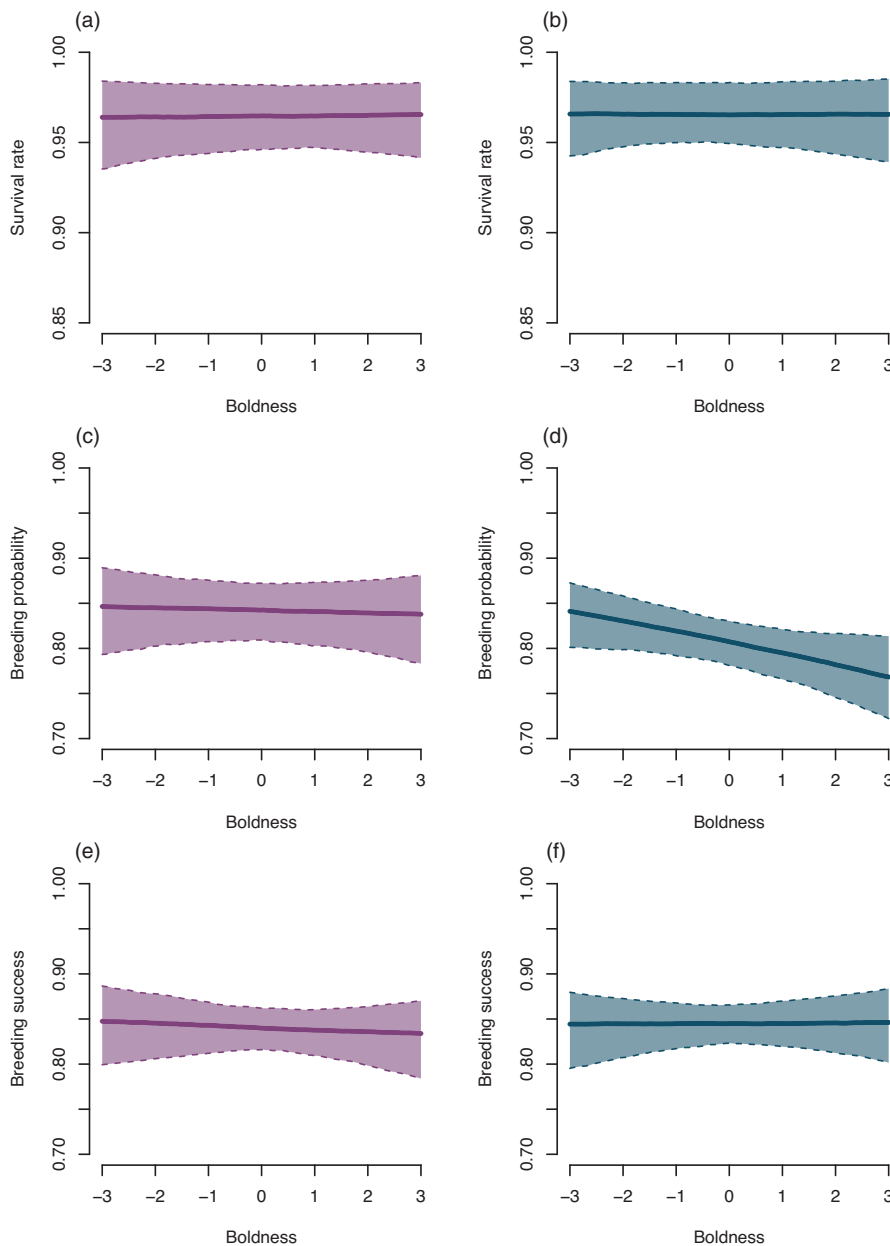
#### 3.1 | Demographic rates estimation

Estimates of average vital rates are provided in [Supporting Information S4, Table S5](#) for juveniles and [Table S6](#) for adults. In females, boldness was not likely to affect survival or breeding probability ([Figure 2a,c](#)) as the posterior distribution of  $\rho$  was largely centred on zero for both parameters (all  $F < 60\%$ ). Boldness in females was likely associated with lower breeding success ( $F = 66.0\%$ ; [Figure 2e](#)); however, the effect was weak. The mean effect of boldness ( $\rho$ ) on female breeding success was (on the logit scale)  $-0.019$  (95% credible interval =  $[-0.108, 0.072]$ ), which corresponds to a 1.8% reduction in the odds of breeding with success for every unit of increase in boldness score. In males, boldness was not likely to affect survival ( $F = 49.3\%$ ; [Figure 2b](#)) or breeding

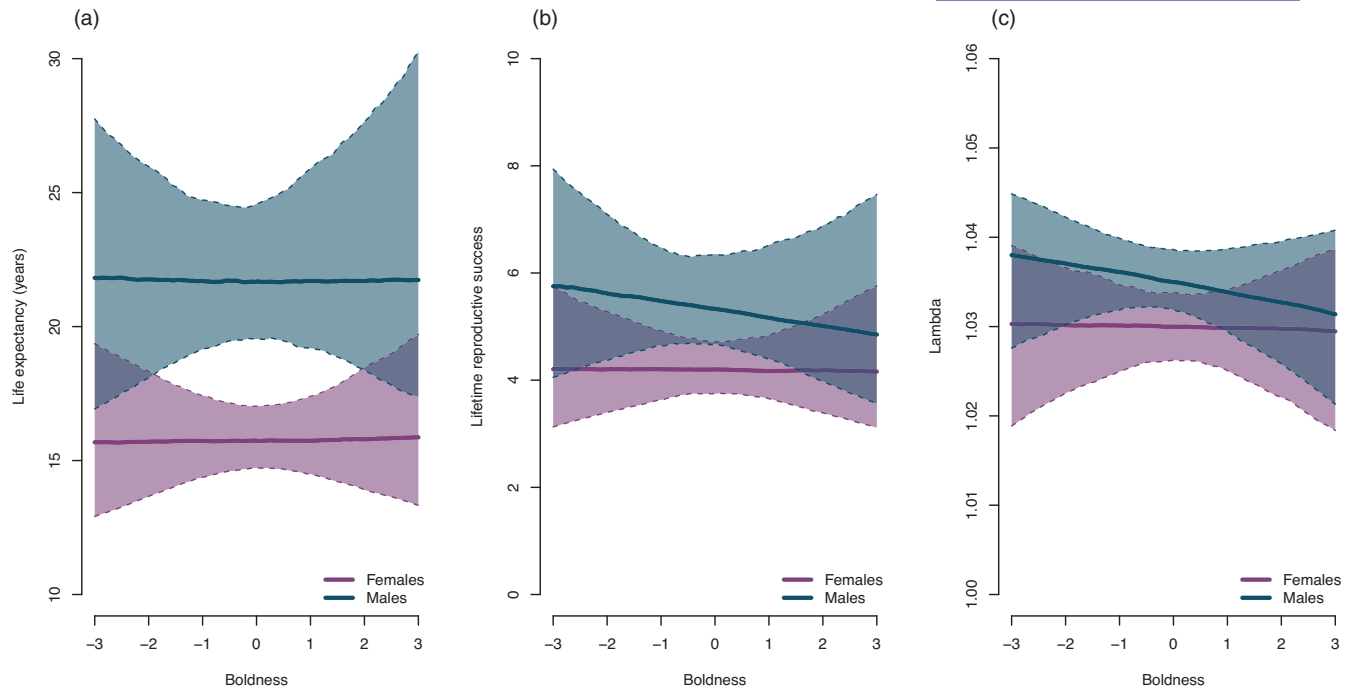
success ( $F = 52.2\%$ ; [Figure 2f](#)). Boldness in males was extremely likely ( $F = 98.8\%$ ) associated with lower breeding probabilities ([Figure 2d](#)). The mean effect of boldness ( $\rho$ ) on breeding probability was (on the logit scale)  $-0.078$  (95% credible interval =  $[-0.147, -0.009]$ ), which corresponds to a 7.5% reduction in the odds of breeding for every unit of increase in boldness score. Posterior distributions of  $\rho$  for each vital rate and sex can be found in [Supporting Information S4, Figure S2](#).

#### 3.2 | Life-history outcomes, population growth rate and occupancy times

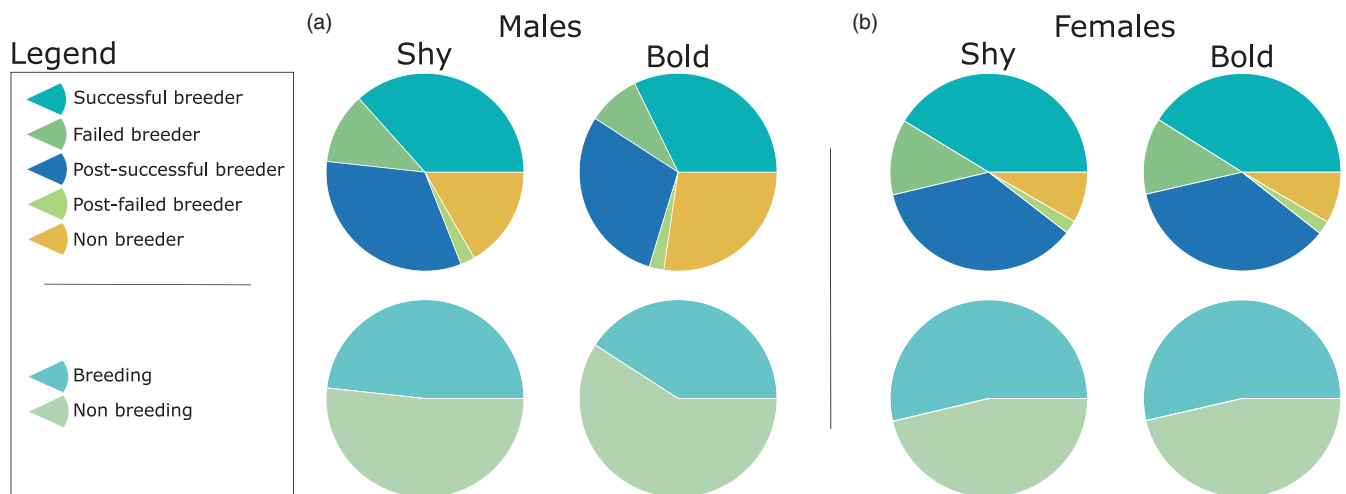
Boldness had no discernible effect on life expectancy in males and females ([Figure 3a](#)). Lifetime reproductive success was unaffected by boldness score in females ([Figure 3b](#)). In males, lifetime



**FIGURE 2** Effect of boldness on adult demographic rates (females: a, c, e; males: b, d, f) wandering albatrosses at Crozet Island from 2008 to 2020. We used the estimate of the impact of boldness on demographic rates from the Capture-Mark-Recapture model to obtain the median prediction line over boldness scores ranging between  $-3$  and  $3$ . The shaded polygons represent the 95% confidence intervals over the entire set of posteriors. Predictions for survival are for successful breeders (SB) of age 11 and for breeding probability and breeding success probability are for post-successful breeders (PSB) of age 11.



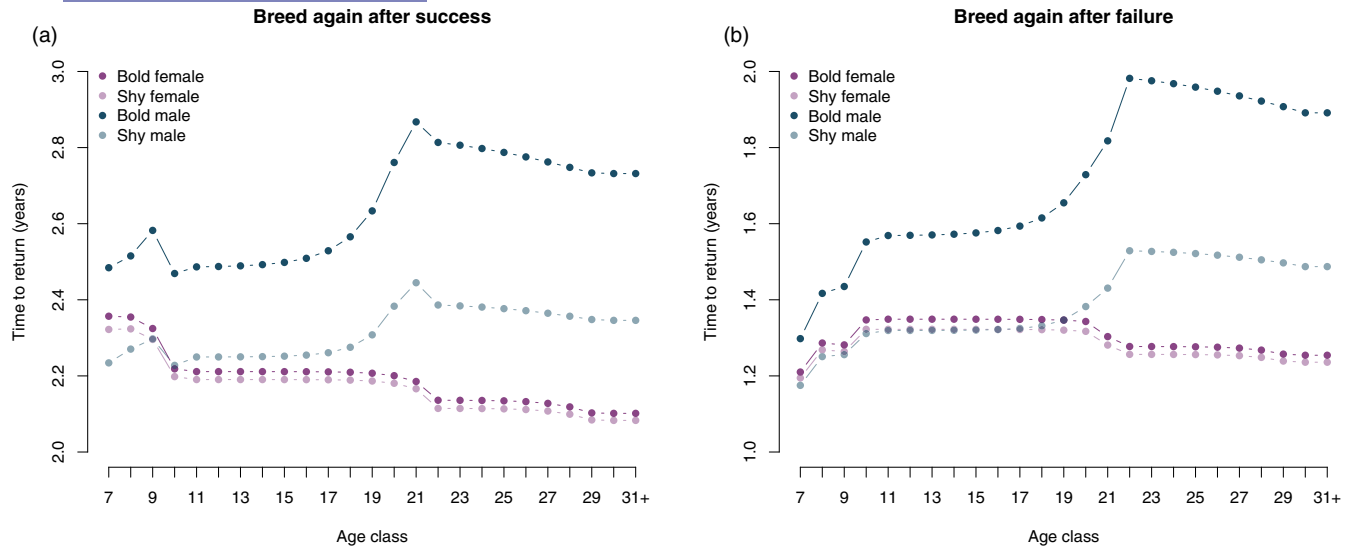
**FIGURE 3** Effect of boldness on life-history outcomes: (a) life expectancy and (b) lifetime reproductive success) and (c) population growth rate ( $\lambda$ ) in wandering albatrosses at Crozet Island. For each simulated boldness score, we randomly sampled 100 values for the intercept and slope of boldness effect and predicted a new value for each demographic rate. Those demographic rates were then inserted into the matrix population models to generate the life-history outcomes. Solid lines represent median effects, whereas the shaded area represent the 95% confidence intervals.



**FIGURE 4** Proportion of time spent by (a) males and (b) females wandering albatrosses in the five adult breeding states (upper panels) and proportion of time spent in breeding and non-breeding states (lower panels) for bold and shy individuals.

reproductive success decreased from a median of 5.8 (95% confidence interval=[4.1, 7.9]) fledglings in shy males to a median of 4.9 (95% confidence interval=[3.6, 7.5]) fledglings in bold males. In females, there was no detectable decline in population growth rate with increasing boldness score. In males, population growth rates declined with increasing boldness score, from a median of 1.038 (95% confidence interval=[1.028, 1.045]) for shy to a median of 1.031 (95% confidence interval=[1.021, 1.041]) for bold individuals (Figure 3c).

For males, time spent in the different reproductive states varied between extreme shy and bold individuals (Figure 4a). Bold males spent 5.8% and 1.8% less time as successful and failed breeders, respectively, compared to shy males. Bold males also spent 11.8% more time in the non-breeder state. Overall, shy males spent 47.4% of their adult life breeding (52.6% non-breeding) and bold males spent 39.8% of their adult life breeding (60.1% non-breeding). In contrast, for females the time spent in the different reproductive states was similar between shy and bold individuals (Figure 4b).



**FIGURE 5** Time to return to a breeding state (i.e. successful breeder, SB, or failed breeder, FB) after a successful (a) or failed (b) breeding attempt in adult wandering albatrosses from Crozet across age classes. Results are shown for males (blue) and females (purple) and for shy (lighter colours) and bolder (darker colours) individuals.

We found that return times to breeding varied according to the age of the individuals at their previous reproductive state (Figure 5). Overall, return times were longer after a breeding success. Return times to breeding states were on average greater in males compared to females (Figure 5). In males, return times to breeding states were longer in older compared to younger individuals regardless of previous reproductive state. Further, in males, return times were longer for bold versus shy individuals, and this difference increased over adult life (Figure 5a,b). Specifically, it took 0.59 years more to return to breeding for a bold male of age class 31+ compared to a bold male of age class 7 after a reproductive failure. This difference was 0.24 years when previous reproductive outcome was success. For shy males, the difference in return time to breeding between age class 31+ and age class 7 was 0.11 and 0.31 years when previous reproductive outcome was success or failure, respectively. This means that bolder males take disproportionately longer to breed again as they get older compared to shy males. After age 21, breeding probabilities for males decreased (Supporting Information S4; Table S6). This caused return times to increase abruptly up to 21 years old as more and more of the state transitions included in the calculation of return times implied breeding probabilities after age 21. For females, the time taken to breed again after a successful reproductive event declined over adult life, which means that older, but successful, females returned to breeding quicker compared to younger females (Figure 5a). Such a decline with age was not observed for females having failed their previous reproduction (Figure 5b). A similar pattern was observed in both bold and shy females.

## 4 | DISCUSSION

Using a unique long-term series of coupled data on individual life histories and personality in wandering albatrosses, we conducted a

comprehensive analysis of the role of boldness on demographic rates, life-history outcomes, and population growth rate. We showed that the impact of boldness was sex-specific. Contrary to our expectations, boldness did not affect survival rates in either sex. However, our results showed differential impact of personality on reproductive rates in females and males, with an influence of personality on breeding probabilities in males and little effects in females. Bolder males bred less frequently and spent a relatively greater proportion of their adult lifetime not breeding, compared to shy males because they took longer to breed again after a reproductive attempt. As a result, bolder males had slightly lower lifetime reproductive outcomes and overall population growth rates compared to shy males, whereas female life-history outcomes seemed invariable across the shy-bold spectrum.

Traditionally, the impact of personality is assessed by measuring the impact of a personality trait on one or (sometimes) multiple fitness-related traits (reviewed in Smith & Blumstein, 2008). However, there is a limited focus on assessing its impact throughout the life cycle, including survival, breeding, and success probabilities. This could explain why inconsistent results about the role of personality in individual performance are found across studies, especially in the pace-of-life literature (Moiron et al., 2020; Royauté et al., 2018). Here, our holistic approach, combining multiple statistical and mathematical tools and considering all aspects of the life cycle simultaneously, offers great potential to unveil the actual pattern of personality-mediated impacts in wild populations. Our approach provides many advantages. First, CMR models account for detection issues, which often hinder the proper estimation of survival and breeding probabilities in natural systems. In using CMR models, we were able to directly measure the impact of boldness on all demographic rates of the wandering albatross adult life cycle. Secondly, Markov chain modelling and matrix models enable the integration of the complex, sometimes opposing, effects of personality on demographic rates to calculate its impact on life-history outcomes (e.g.

lifetime reproductive success and life expectancy), occupancy times (time spent as non-breeder during lifetime and return time to breeding), and population growth rates.

We found that boldness had no discernible impact on survival and breeding success, but led to reduced reproductive probabilities in male wandering albatrosses. Overall, our results suggest slightly lower lifetime reproductive success and population growth rates for bolder males, due to reduced breeding probabilities. Most studies assessing the role of personality on reproductive rates focus on breeding success, ignoring reproductive probability. Many species breed every year, with little inter-individual differences in breeding frequencies. Also, tracking individuals between reproductive events poses an important logistical challenge. This may explain why personality impacts on breeding probabilities are less commonly investigated. Yet, long-lived species typically have a conservative strategy characterized by a prioritization of maintenance over reproduction (Gaillard et al., 1998), and breeding can be skipped if it may impair future reproductive prospects (Hamel et al., 2010). In those species, breeding probability can represent an important life-history trait affecting individual fitness and population dynamics (Jenouvrier et al., 2005; Van de Walle et al., 2021).

Our results deviate from the POLS hypothesis (Réale et al., 2010), which suggests that the trade-off between survival and reproduction (Stearns, 1989) should be mediated by individual differences in boldness. The POLS hypothesis suggests that due to their expected shorter lifespan, bolder individuals should invest more heavily in reproduction (Réale et al., 2010; Wolf et al., 2007). Instead, we observed no influence of boldness on survival, indicating the absence of antagonistic effects of boldness on survival and reproduction in wandering albatrosses. Expectations from the POLS hypothesis are grounded in the assumption that a slow-fast continuum of life histories exists at the individual level. However, the existence of such a continuum is currently being questioned (Royauté et al., 2018), with poor evidence within bird and mammal populations, including the wandering albatross (Van de Walle et al., 2023). Our study thus aligns with Moiron et al. (2020)'s statement that boldness in the wild is generally not associated with lower survival rates and that the shy-bold axis of variation does not correlate with a slow-fast continuum. Laskowski et al. (2021) suggested that the theory on POLS could nevertheless be reconciled if we considered the possibility that boldness can mediate resource acquisition by individuals, and in turn, resource allocation to survival and reproduction. For example, if bolder individuals could acquire more resources, they would be able to allocate more resources to their current reproduction and their maintenance, which would mask the expression of the trade-off. In the wandering albatross, bolder individuals are at the explorative end of the exploitation-exploration continuum, making shorter foraging trips within smaller, but more, foraging patches (Patrick et al., 2017), but it remains unknown whether bold versus shy individuals differ in their foraging success. Answering how boldness affects foraging effort and success would improve our understanding of the mechanistic linkages between personality, resource acquisition and allocation, and ultimately individual fitness.

An alternative possibility is that high resource allocation in reproduction by bold males may come at a cost in terms of future reproduction, rather than in survival. Reproduction is costly in the wandering albatross. After a successful breeding attempt, most individuals will take a sabbatical year to replenish body reserves, whereas unsuccessful individuals are more likely to breed again the following year (Barbraud & Weimerskirch, 2012; Tickell, 1968). Therefore, there is an implicit trade-off between breeding success and breeding frequency in this species and bolder males may face a stronger trade-off. In addition, boldness being linked with risk-proneness (Réale et al., 2010), it should also dictate the amount of risk individuals are willing to support with regard to reproduction, such as protecting and continuing their reproductive allocation. For example, in a wild population of great tits, shyer individuals were more likely to abandon their nest under risky situations (Cole & Quinn, 2014). Bolder wandering albatross males are also expected to have a higher threshold for nest abandonment (Patrick & Weimerskirch, 2015). Bolder birds in late adulthood also make longer foraging trips and gain more mass per foraging trip during the breeding season compared to shyer birds (Patrick & Weimerskirch, 2015). Furthermore, breeding success of bolder males declines less rapidly with age than that of shyer males (Patrick & Weimerskirch, 2015), suggesting they continue to allocate more to reproduction throughout their life. For those bold males, higher allocation to current reproduction may mean that the sabbatical year is insufficient to replenish body condition, forcing them to spend longer periods of time away from the colony not breeding. Our results support this view as bolder males take more time to come back to breeding after a breeding event and have a stronger increase in inter-breeding intervals with age (i.e. reproductive senescence) compared to shyer males.

With the rationale that boldness should correlate with vulnerability to fishery bycatch and higher mortality rates, we expected to find a negative impact of boldness on survival. However, starting in the late 1990s, several mitigation measures were implemented in the French Exclusive Economic Zones (EEZ) of Crozet and Kerguelen Islands to reduce fishery bycatch, such as night settings (albatrosses are diurnal foragers; Bentley et al., 2021), closing period, and the use of scaring line spreading. This probably contributed to lessening the fishery-induced mortality pressure on the population, which could have led to an absence of differential mortality along the shy-bold continuum for male and female wandering albatrosses. This is also coherent with model-based predictions from Barbraud et al. (2012) and Tuck et al. (2015) suggesting that the most vulnerable birds to fishery bycatch were removed from the population around 1990.

It is possible that boldness affects juvenile survival and the probability of returning to the population, but this is something our study system does not allow to evaluate. Personality tests are designed to be performed on incubating birds only. Pre-breeders are not tied to a nest and thus wander off if approached, preventing personality to be tested. Overall, about 60% of individuals die before recruitment (Fay et al., 2015), constituting an invisible fraction for this study. Juveniles are more vulnerable to mortality risks, including bycatch (Gianuca et al., 2017) and density dependence (Fay et al., 2015),

and boldness may modulate these risks. Boldness in pre-breeders could affect their competitive ability, and thus influence their sensitivity to density dependence and exposure to bycatch (bolder individuals could be more exposed to bycatch). Boldness could also affect pre-breeders capacity to acquire resources and gain mass. Since body mass determines age at first reproduction in this species (Weimerskirch, 2018), it could have implications for lifetime reproductive success of both males and females. Measurements of personality on this invisible fraction combined with a better understanding of pre-breeders mortality causes would be useful to assess whether differential selective pressures act on juveniles and adults and what maintains boldness variation in wild populations.

Our results showed that adult personality has relatively little impact on individual performance (life expectancy, lifetime reproductive outcomes) and population growth rate, suggesting either no or only slight selection against boldness in males. The mechanisms that would maintain boldness variation in males despite lower associated reproductive performance are not clear in the wandering albatross. Fluctuating selection on personality according to annual variations in environmental pressure is expected in avian populations and can represent a mechanism maintaining genetic variation in personalities (Dingemanse et al., 2004). It is also possible that personality is under selection with opposite selective pressure on adults and juveniles. Indeed, measuring selective pressures at different stages can lead to different conclusions about selective pressures (Grafen, 1988), and future research priorities include developing methods to measure personality in juveniles. We also acknowledge that boldness represents one dimension of animal personality. Thus, continued efforts to monitor boldness, and the consideration of other personality traits, such as, for example foraging tactics, would help clarify the role of personality in shaping individual fitness in the wild.

Drawing definitive conclusions about the selective pressures at play is challenging due to methodological limitations that may have constrained our ability to detect ongoing selective pressures. Here, we were limited to the period of personality measurements from 2008 to 2020 to assess the role of boldness on adult demographic rates. Despite this representing a very long-term study on personality, it is still relatively short (12 years) in comparison to the wandering albatross lifespan (>60 years; Weimerskirch, 2018). This has likely limited our statistical power to detect impacts on survival as relatively few individuals have died during the period 2008–2020. As a result, uncertainties around demographic rates were large, which resulted in even larger uncertainties when used in combination to compute life-history outcomes. Further, it is possible that cohort effects might have masked the impact of boldness on individual performance. However, whereas earlier studies have shown an impact of early life condition on juvenile survival (reviewed in Weimerskirch, 2018) and cohort differences in age at first breeding (Weimerskirch & Jouventin, 1987), so far cohort effects on adult performance has not been reported for this population making such interference effects unlikely.

Our comprehensive approach, combining an evaluation of the effect of boldness at different temporal scales (annual demographic

rates and lifetime outcomes) and on all adult demographic rates, revealed that the link between boldness and demography is not as straightforward as would be expected from the pace-of-life literature. It may be sex-specific and play a more important role in one sex compared to the other. The wandering albatross population at Crozet has a male-biased adult sex ratio (Weimerskirch et al., 2005), which might affect the relative impact of boldness for males and females there (Sun, Barbraud, et al., 2022; Sun, Van deWalle, et al., 2022). Further investigations could address the role of the operational sex ratio in mediating the demographic impact of personality in wild populations. Finally, despite the underlying cause, prolonged selection could lead to a shift in the relative frequency of personality types at the population level, with further population-level consequences, such as shifts in generation time.

### AUTHOR CONTRIBUTIONS

Stephanie Jenouvrier, Samantha C. Patrick, Christophe Barbraud, Henri Weimerskirch, Joanie Van de Walle and Ruijiao Sun conceived the ideas and Joanie Van de Walle, Stephanie Jenouvrier, Ruijiao Sun, Christophe Barbraud and Samantha C. Patrick designed the methodology. Ruijiao Sun and Stephanie Jenouvrier designed the CMR model and Ruijiao Sun conducted the CMR analyses with the help of Rémi Fay. Joanie Van de Walle conducted the other demographic analyses, with the help from Stephanie Jenouvrier. Joanie Van de Walle performed results visualization and presentation, and wrote the first draft of the manuscript. Henri Weimerskirch, Christophe Barbraud, Samantha C. Patrick and Karine Delord led the curation of the data, prepared the data, and helped interpret the data. All authors contributed critically to the drafts and gave final approval for publication.

### ACKNOWLEDGEMENTS

We acknowledge all the field workers involved in long-term demographic studies since 1960 on Possession Island for their invaluable help with data collection. We also thank Dominique Joubert for help with data management, as part of Program 109, “Seabirds and marine mammals as sentinels of global changes in the Southern Ocean,” supported by the Institut Polaire Français Paul-Emile Victor (IPEV; PIs H. Weimerskirch, C. Barbraud, P. Jouventin, J.L. Mouglin). We acknowledge Terres Australes et Antarctiques Françaises, and Zone Atelier Antarctique for logistical and financial support. We give special thanks to Jack Thorley, Silke van Daalen, Bilgecan Sen and Francesco Ventura for their help with model analyses and/or thoughtful discussions. This work was supported by the National Science Foundation (GEO-NERC 1951500 and OPP 1840058). Open Access funding provided by the Fisheries and Oceans Canada library.

### CONFLICT OF INTEREST STATEMENT

Authors declare no conflict of interest.

### DATA AVAILABILITY STATEMENT

Data and code are publicly available on USAP-DC repository (Van de Walle et al., 2024).



## ORCID

Joanie Van de Walle  <https://orcid.org/0000-0002-5137-1851>  
 Ruijiao Sun  <https://orcid.org/0000-0001-8997-5741>  
 Rémi Fay  <https://orcid.org/0000-0002-7202-367X>  
 Karine Delord  <https://orcid.org/0000-0001-6720-951X>  
 Stephanie Jenouvrier  <https://orcid.org/0000-0003-3324-2383>

## REFERENCES

- Barbraud, C., Rolland, V., Jenouvrier, S., Nevoux, M., Delord, K., & Weimerskirch, H. (2012). Effects of climate change and fisheries bycatch on Southern Ocean seabirds: A review. *Marine Ecology Progress Series*, 454, 285–307. <https://doi.org/10.3354/meps09616>
- Barbraud, C., & Weimerskirch, H. (2012). Estimating survival and reproduction in a quasi-biennially breeding seabird with uncertain and unobservable states. *Journal of Ornithology*, 152, S605–S615. <https://doi.org/10.1007/s10336-011-0686-1>
- Bentley, L. K., Kato, A., Ropert-Coudert, Y., Manica, A., & Phillips, R. A. (2021). Diving behaviour of albatrosses: Implications for foraging ecology and bycatch susceptibility. *Marine Biology*, 168, 36. <https://doi.org/10.1007/s00227-021-03841-y>
- Biro, P. A., & Stamps, J. A. (2008). Are animal personality traits linked to life-history productivity? *Trends in Ecology & Evolution*, 23, 361–368. <https://doi.org/10.1016/j.tree.2008.04.003>
- Brooks, S. P., & Gelman, A. (1998). General methods for monitoring convergence of iterative simulations. *Journal of Computational and Graphical Statistics*, 7, 434–455. <https://doi.org/10.1080/10618600.1998.10474787>
- Caswell, H. (2001). *Matrix population models: Construction, analysis, and interpretation* (2nd ed.). Sinauer Associates. [https://doi.org/10.1016/S0304-3800\(02\)00002-9](https://doi.org/10.1016/S0304-3800(02)00002-9)
- Caswell, H. (2009). Stage, age and individual stochasticity in demography. *Oikos*, 118, 1763–1782. <https://doi.org/10.1111/j.1600-0706.2009.17620.x>
- Choquet, R., Rouan, L., & Pradel, R. (2009). Program E-Surge: A software application for fitting multievent models. In D. L. Thomson, E. G. Cooch, & M. J. Conroy (Eds.), *Modeling demographic processes in marked populations* (pp. 845–865). Springer. [https://doi.org/10.1007/978-0-387-78151-8\\_39](https://doi.org/10.1007/978-0-387-78151-8_39)
- Cole, E. F., & Quinn, J. L. (2014). Shy birds play it safe: Personality in captivity predicts risk responsiveness during reproduction in the wild. *Biology Letters*, 10, 20140178. <https://doi.org/10.1098/rsbl.2014.0178>
- Dammhahn, M., Dingemanse, N. J., Niemelä, P. T., & Réale, D. (2018). Pace-of-life syndromes: A framework for the adaptive integration of behaviour, physiology and life history. *Behavioral Ecology and Sociobiology*, 72, 1–8. <https://doi.org/10.1007/s00265-018-2473-y>
- Dhellemmes, F., Finger, J.-S., Smukall, M. J., Gruber, S. H., Guttridge, T. L., Laskowski, K. L., & Krause, J. (2021). Personality-driven life history trade-offs differ in two subpopulations of free-ranging predators. *Journal of Animal Ecology*, 90, 260–272. <https://doi.org/10.1111/1365-2656.13283>
- Dingemanse, N. J. (2021). Personality and pace-of-life: Ecological lessons learnt from free-ranging lemon sharks. *Journal of Animal Ecology*, 90, 314–316. <https://doi.org/10.1111/1365-2656.13401>
- Dingemanse, N. J., Both, C., Drent, P. J., & Tinbergen, J. M. (2004). Fitness consequences of avian personalities in a fluctuating environment. *Proceedings of the Royal Society B: Biological Sciences*, 271, 847–852. <https://doi.org/10.1098/rspb.2004.2680>
- Easterling, M. R., Ellner, S. P., & Dixon, P. M. (2018). Size-specific sensitivity: Applying a new structured population model. *Ecology*, 81, 694–708. [https://doi.org/10.1890/0012-9658\(2000\)081\[0694:SSSAAN\]2.0.CO;2](https://doi.org/10.1890/0012-9658(2000)081[0694:SSSAAN]2.0.CO;2)
- Ellis, S., Franks, D. W., Natrass, S., Cant, M. A., Weiss, M. N., Giles, D., Balcomb, K. C., & Croft, D. P. (2017). Mortality risk and social network position in resident killer whales: Sex differences and the importance of resource abundance. *Proceedings of the Royal Society B: Biological Sciences*, 284(1865), 20171313. <https://doi.org/10.1098/rspb.2017.1313>
- Fay, R., Barbraud, C., Delord, K., & Weimerskirch, H. (2016). Variation in the age of first reproduction: Different strategies or individual quality? *Ecology*, 97, 1842–1851. <https://doi.org/10.1890/15-1485.1>
- Fay, R., Weimerskirch, H., Delord, K., & Barbraud, C. (2015). Population density and climate shape early-life survival and recruitment in a long-lived pelagic seabird. *Journal of Animal Ecology*, 84, 1423–1433. <https://doi.org/10.1111/1365-2656.12390>
- Gaillard, J.-M., Festa-Bianchet, M., & Yoccoz, N. G. (1998). Population dynamics of large herbivores: Variable recruitment with constant adult survival. *Trends in Ecology & Evolution*, 13, 58–63. [https://doi.org/10.1016/S0169-5347\(97\)01237-8](https://doi.org/10.1016/S0169-5347(97)01237-8)
- Gauthier, G., Milot, E., & Weimerskirch, H. (2010). Small-scale dispersal and survival in a long-lived seabird, the wandering albatross. *Journal of Animal Ecology*, 79(4), 879–887. <https://doi.org/10.1111/j.1365-2656.2010.01683.x>
- Gianuca, D., Phillips, R. A., Townley, S., & Votier, S. C. (2017). Global patterns of sex- and age-specific variation in seabird bycatch. *Biological Conservation*, 205, 60–76. <https://doi.org/10.1016/j.biocon.2016.11.028>
- Grafen, A. (1988). On the uses of data on lifetime reproductive success. In T. H. Clutton-Brock (Ed.), *Reproductive success* (pp. 454–471). The University of Chicago Press.
- Hamel, S., Gaillard, J.-M., & Yoccoz, N. G. (2018). Introduction to: Individual heterogeneity—The causes and consequences of a fundamental biological process. *Oikos*, 127, 643–647. <https://doi.org/10.1111/oik.05222>
- Hamel, S., Gaillard, J.-M., Yoccoz, N. G., Loison, A., Bonenfant, C., & Descamps, S. (2010). Fitness costs of reproduction depend on life speed: Empirical evidence from mammalian populations. *Ecology Letters*, 13, 915–935. <https://doi.org/10.1111/j.1461-0248.2010.01478.x>
- IPCC. (2021). Summary for policymakers. In V. Masson-Delmotte, P. Zhai, A. Pirani, S. L. Connors, C. Péan, S. Berger, N. Caud, Y. Chen, L. Goldfarb, M. I. Gomis, M. Huang, K. Leitzell, E. Lonnoy, J. B. R. Matthews, T. K. Maycock, T. Waterfield, O. Yelekçi, R. Yu, & B. Zhou (Eds.), *Climate change 2021: The physical science basis. Contribution of Working Group I to the Sixth Assessment Report of the Intergovernmental Panel on Climate Change* (pp. 3–32). Cambridge University Press.
- Jenouvrier, S. (2013). Impacts of climate change on avian populations. *Global Change Biology*, 19, 2036–2057. <https://doi.org/10.1111/gcb.12195>
- Jenouvrier, S., Aubry, L. M., Barbraud, C., Weimerskirch, H., & Caswell, H. (2018). Interacting effects of unobserved heterogeneity and individual stochasticity in the life history of the southern fulmar. *Journal of Animal Ecology*, 87, 212–222. <https://doi.org/10.1111/1365-2656.12752>
- Jenouvrier, S., Barbraud, C., Cazelles, B., & Weimerskirch, H. (2005). Modelling population dynamics of seabirds: Importance of the effects of climate fluctuations on breeding proportions. *Oikos*, 108, 511–522. <https://doi.org/10.1111/j.0030-1299.2005.13351.x>
- Kellner, K. (2021). jagsUI: A wrapper around 'rjags' to streamline 'JAGS' analyses.
- Laskowski, K. L., Moiron, M., & Niemelä, P. T. (2021). Integrating behavior in life-history theory: Allocation versus acquisition? *Trends in Ecology & Evolution*, 36, 132–138. <https://doi.org/10.1016/j.tree.2020.10.017>
- Leclerc, M., Zedrosser, A., & Pelletier, F. (2017). Harvesting as a potential selective pressure on behavioural traits. *Journal of Applied Ecology*, 54, 1941–1945. <https://doi.org/10.1111/1365-2664.12893>
- Lefkovich, L. P. (1965). The study of population growth in organisms grouped by stages. *Biometrics*, 21, 1–18. <https://doi.org/10.2307/2528348>



- Leslie, P. H. (1945). On the use of matrices in certain population mathematics. *Biometrika*, 33, 183–212. <https://doi.org/10.2307/2332297>
- Lotka, A. J. (1939). Théorie analytique des associations biologiques: analyse démographique avec application particulière à l'espèce humaine. In *Actualités scientifiques et industrielles*. Hermann et Cie.
- Mccully, F. R., Weimerskirch, H., Cornell, S. J., Hatchwell, B. J., Cairo, M., & Patrick, S. C. (2022). Partner intrinsic characteristics influence foraging trip duration, but not coordination of care in wandering albatrosses *Diomedea exulans*. *Ecology and Evolution*, 12, e9621. <https://doi.org/10.1002/ece3.9621>
- Mcgraw, J. B., & Caswell, H. (1996). Estimation of individual fitness from life-history data. *The American Naturalist*, 147, 47–64. <https://doi.org/10.1086/285839>
- Moiron, M., Laskowski, K. L., & Niemelä, P. T. (2020). Individual differences in behaviour explain variation in survival: A meta-analysis. *Ecology Letters*, 23, 399–408. <https://doi.org/10.1111/ele.13438>
- Niemelä, P. T., Lattenkamp, E. Z., & Dingemanse, N. J. (2015). Personality-related survival and sampling bias in wild cricket nymphs. *Behavioral Ecology*, 26, 936–946. <https://doi.org/10.1093/beheco/arv036>
- Pardo, D., Barbraud, C., & Weimerskirch, H. (2013). Females better face senescence in the wandering albatross. *Oecologia*, 173(4), 1283–1294. <https://doi.org/10.1007/s00442-013-2704-x>
- Patrick, S. C., Charmantier, A., & Weimerskirch, H. (2013). Differences in boldness are repeatable and heritable in a long-lived marine predator. *Ecology and Evolution*, 3, 4291–4299. <https://doi.org/10.1002/ece3.748>
- Patrick, S. C., Pinaud, D., & Weimerskirch, H. (2017). Boldness predicts an individual's position along an exploration–exploitation foraging trade-off. *Journal of Animal Ecology*, 86, 1257–1268. <https://doi.org/10.1111/1365-2656.12724>
- Patrick, S. C., & Weimerskirch, H. (2015). Senescence rates and late adulthood reproductive success are strongly influenced by personality in a long-lived seabird. *Proceedings of the Royal Society B: Biological Sciences*, 282, 20141649. <https://doi.org/10.1098/rspb.2014.1649>
- Plummer, M. (2003). JAGS: A program for analysis of Bayesian graphical models using Gibbs sampling. In *Proceedings of the 3rd International Workshop on Distributed Statistical Computing* (pp. 1–10).
- R Core Team. (2021). *R: A language and environment for statistical computing*. R Foundation for Statistical Computing.
- Réale, D., Garant, D., Humphries, M. M., Bergeron, P., Careau, V., & Montiglio, P.-O. (2010). Personality and the emergence of the pace-of-life syndrome concept at the population level. *Philosophical Transactions of the Royal Society, B: Biological Sciences*, 365, 4051–4063. <https://doi.org/10.1098/rstb.2010.0208>
- Réale, D., Martin, J., Coltman, D. W., Poissant, J., & Festa-Bianchet, M. (2009). Male personality, life-history strategies and reproductive success in a promiscuous mammal. *Journal of Evolutionary Biology*, 22, 1599–1607. <https://doi.org/10.1111/j.1420-9101.2009.01781.x>
- Roth, G., & Caswell, H. (2018). Occupancy time in sets of states for demographic models. *Theoretical Population Biology*, 120, 62–77. <https://doi.org/10.1016/j.tpb.2017.12.007>
- Royauté, R., Berdal, M. A., Garrison, C. R., & Dochtermann, N. A. (2018). PACELESS life? A meta-analysis of the pace-of-life syndrome hypothesis. *Behavioral Ecology and Sociobiology*, 72, 64. <https://doi.org/10.1007/s00265-018-2472-z>
- Santicchia, F., Gagnaison, C., Bisi, F., Martinoli, A., Matthyssen, E., Bertolino, S., & Wauters, L. A. (2018). Habitat-dependent effects of personality on survival and reproduction in red squirrels. *Behavioral Ecology and Sociobiology*, 72, 134. <https://doi.org/10.1007/s00265-018-2546-y>
- Sebens, K. P., Sarà, G., & Carrington, E. (2018). Estimation of fitness from energetics and life-history data: An example using mussels. *Ecology and Evolution*, 8, 5279–5290. <https://doi.org/10.1002/ece3.4004>
- Sih, A., Bell, A., & Johnson, J. C. (2004). Behavioral syndromes: An ecological and evolutionary overview. *Trends in Ecology & Evolution*, 19, 372–378. <https://doi.org/10.1016/j.tree.2004.04.009>
- Smith, B. R., & Blumstein, D. T. (2008). Fitness consequences of personality: A meta-analysis. *Behavioral Ecology*, 19, 448–455. <https://doi.org/10.1093/beheco/arm144>
- Stamps, J. A. (2007). Growth-mortality tradeoffs and 'personality traits' in animals. *Ecology Letters*, 10, 355–363. <https://doi.org/10.1111/j.1461-0248.2007.01034.x>
- Stearns, S. C. (1989). Trade-offs in life-history evolution. *Functional Ecology*, 3, 259–268. <https://doi.org/10.2307/2389364>
- Sun, R., Barbraud, C., Weimerskirch, H., Delord, K., Patrick, S. C., Caswell, H., & Jenouvrier, S. (2022). Causes and consequences of pair-bond disruption in a sex-skewed population of a long-lived monogamous seabird. *Ecological Monographs*, 92, e1522. <https://doi.org/10.1002/ecm.1522>
- Sun, R., Van de Walle, J., Patrick, S. C., Barbraud, C., Weimerskirch, H., Delord, K., & Jenouvrier, S. (2022). Boldness predicts divorce rates in wandering albatrosses (*Diomedea exulans*). *Biology Letters*, 18, 3–8. <https://doi.org/10.1098/rsbl.2022.0301>
- The MathWorks Inc. (2022). MATLAB version: 9:13.0 (R2022b).
- Tickell, W. L. N. (1968). The biology of the great albatrosses, *Diomedea exulans* and *Diomedea epomophora*. *Antarctic Research Series*, 12, 1–65. <https://doi.org/10.1029/AR012p0001>
- Tuck, G. N., Thomson, R. B., Barbraud, C., Delord, K., Louzao, M., Herrera, M., & Weimerskirch, H. (2015). An integrated assessment model of seabird population dynamics: Can individual heterogeneity in susceptibility to fishing explain abundance trends in Crozet wandering albatross? *Journal of Applied Ecology*, 52, 950–959. <https://doi.org/10.1111/1365-2664.12462>
- Van de Walle, J., Fay, R., Gaillard, J.-M., Pelletier, F., Hamel, S., Gamelon, M., Barbraud, C., Blanchet, F. G., Blumstein, D. T., Charmantier, A., Delord, K., Larue, B., Martin, J., Mills, J. A., Milot, E., Mayer, F. M., Rotella, J., Saether, B.-E., Teplitsky, C., ... Jenouvrier, S. (2023). Individual life histories: Neither slow nor fast, just diverse. *Proceedings of the Royal Society B: Biological Sciences*, 290(2002), 20230511. <https://doi.org/10.1098/rspb.2023.0511>
- Van de Walle, J., Pelletier, F., Zedrosser, A., Swenson, J. E., Jenouvrier, S., & Bischof, R. (2021). The interplay between hunting rate, hunting selectivity, and reproductive strategies shapes population dynamics of a large carnivore. *Evolutionary Applications*, 14, 2414–2432. <https://doi.org/10.1111/eva.13253>
- Van de Walle, J., Pigeon, G., Zedrosser, A., Swenson, J. E., & Pelletier, F. (2018). Hunting regulation favors slow life histories in a large carnivore. *Nature Communications*, 9, 1100. <https://doi.org/10.1038/s41467-018-03506-3>
- Van de Walle, J., Sun, R., Fay, R., Patrick, S. C., Barbraud, C., Delord, K., Weimerskirch, H., & Jenouvrier, S. (2024). *Data for the impact of boldness on demographic rates and life-history outcomes in the wandering albatross*. U.S. Antarctic Program (USAP) Data Center. <https://doi.org/10.15784/601770>
- Weimerskirch, H. (2018). Linking demographic processes and foraging ecology in wandering albatross—Conservation implications. *Journal of Animal Ecology*, 87, 945–955. <https://doi.org/10.1111/1365-2656.12817>
- Weimerskirch, H., Corbeau, A., Pajot, A., Patrick, S. C., & Collet, J. (2023). Albatrosses develop attraction to fishing vessels during immaturity but avoid them at old age. *Proceedings of the Royal Society B: Biological Sciences*, 290, 20222252. <https://doi.org/10.1098/rspb.2022.2252>
- Weimerskirch, H., & Jouventin, P. (1987). Population dynamics of the wandering albatross, *Diomedea exulans*, of the Crozet Islands: Causes and consequences of the population decline. *Oikos*, 49(3), 315–322. <https://doi.org/10.2307/3565767>
- Weimerskirch, H., Lallemand, J., & Martin, J. (2005). Population sex ratio variation in a monogamous long-lived bird, the wandering albatross. *Journal of Animal Ecology*, 74, 285–291. <https://doi.org/10.1111/j.1365-2656.2005.00922.x>

- Wilson, D. S., Clark, A. B., Coleman, K., & Dearstyne, T. (1994). Shyness and boldness in humans and other animals. *Trends in Ecology & Evolution*, 9, 442–446. [https://doi.org/10.1016/0169-5347\(94\)90134-1](https://doi.org/10.1016/0169-5347(94)90134-1)
- Wolf, M., Van Doorn, G. S., Leimar, O., & Weissing, F. J. (2007). Life-history trade-offs favour the evolution of animal personalities. *Nature*, 447, 581–584. <https://doi.org/10.1038/nature05835>

## SUPPORTING INFORMATION

Additional supporting information can be found online in the Supporting Information section at the end of this article.

**Supporting Information S1.** E-Surge model selection.

**Supporting Information S2.** Preliminary analysis of non-linear effects of boldness on demographic parameters with respect to age.

**Supporting Information S3.** Matrix model.

**Supporting Information S4.** Supplementary tables and figures.

**How to cite this article:** Van de Walle, J., Sun, R., Fay, R., Patrick, S. C., Barbraud, C., Delord, K., Weimerkirch, H., & Jenouvrier, S. (2024). The impact of boldness on demographic rates and life-history outcomes in the wandering albatross. *Journal of Animal Ecology*, 00, 1–15. <https://doi.org/10.1111/1365-2656.14077>