



HAL
open science

Extravascular lung water levels are associated with mortality: a systematic review and meta-analysis

Francesco Gavelli, Rui Shi, Jean-Louis Teboul, Danila Azzolina, Pablo Mercado, Mathieu Jozwiak, Michelle Chew, Wolfgang Huber, Mikhail Kirov, Vsevolod Kuzkov, et al.

► To cite this version:

Francesco Gavelli, Rui Shi, Jean-Louis Teboul, Danila Azzolina, Pablo Mercado, et al.. Extravascular lung water levels are associated with mortality: a systematic review and meta-analysis. *Critical Care*, 2022, 26 (1), pp.202. 10.1186/s13054-022-04061-6 . hal-04521646

HAL Id: hal-04521646

<https://hal.science/hal-04521646>

Submitted on 15 May 2024

HAL is a multi-disciplinary open access archive for the deposit and dissemination of scientific research documents, whether they are published or not. The documents may come from teaching and research institutions in France or abroad, or from public or private research centers.

L'archive ouverte pluridisciplinaire **HAL**, est destinée au dépôt et à la diffusion de documents scientifiques de niveau recherche, publiés ou non, émanant des établissements d'enseignement et de recherche français ou étrangers, des laboratoires publics ou privés.

RESEARCH

Open Access



Extravascular lung water levels are associated with mortality: a systematic review and meta-analysis

Francesco Gavelli^{1,2†}, Rui Shi^{1,3*†}, Jean-Louis Teboul^{1,3}, Danila Azzolina⁴, Pablo Mercado⁵, Mathieu Jozwiak^{6,7}, Michelle S. Chew⁸, Wolfgang Huber⁹, Mikhail Y. Kirov¹⁰, Vsevolod V. Kuzkov¹⁰, Tobias Lahmer⁹, Manu L. N. G. Malbrain^{11,12}, Jihad Mallat^{13,14}, Samir G. Sakka¹⁵, Takashi Tagami¹⁶, Tàì Pham^{1,17} and Xavier Monnet^{1,3}

Abstract

Background: The prognostic value of extravascular lung water (EVLW) measured by transpulmonary thermodilution (TPTD) in critically ill patients is debated. We performed a systematic review and meta-analysis of studies assessing the effects of TPTD-estimated EVLW on mortality in critically ill patients.

Methods: Cohort studies published in English from Embase, MEDLINE, and the Cochrane Database of Systematic Reviews from 1960 to 1 June 2021 were systematically searched. From eligible studies, the values of the odds ratio (OR) of EVLW as a risk factor for mortality, and the value of EVLW in survivors and non-survivors were extracted. Pooled OR were calculated from available studies. Mean differences and standard deviation of the EVLW between survivors and non-survivors were calculated. A random effects model was computed on the weighted mean differences across the two groups to estimate the pooled size effect. Subgroup analyses were performed to explore the possible sources of heterogeneity.

Results: Of the 18 studies included (1296 patients), OR could be extracted from 11 studies including 905 patients (464 survivors vs. 441 non-survivors), and 17 studies reported EVLW values of survivors and non-survivors, including 1246 patients (680 survivors vs. 566 non-survivors). The pooled OR of EVLW for mortality from eleven studies was 1.69 (95% confidence interval (CI) [1.22; 2.34], $p < 0.0015$). EVLW was significantly lower in survivors than non-survivors, with a mean difference of -4.97 mL/kg (95% CI [-6.54 ; -3.41], $p < 0.001$). The results regarding OR and mean differences were consistent in subgroup analyses.

Conclusions: The value of EVLW measured by TPTD is associated with mortality in critically ill patients and is significantly higher in non-survivors than in survivors. This finding may also be interpreted as an indirect confirmation of the reliability of TPTD for estimating EVLW at the bedside. Nevertheless, our results should be considered cautiously due to the high risk of bias of many studies included in the meta-analysis and the low rating of certainty of evidence.

Trial registration the study protocol was prospectively registered on PROSPERO: CRD42019126985.

[†]Francesco Gavelli and Rui Shi contributed equally to this work

*Correspondence: rui.shi@universite-paris-saclay.fr

¹ Service de Médecine Intensive-Réanimation, AP-HP, Hôpital de Bicêtre, DMU CORREVE, 78, Rue du Général Leclerc, 94 270 Le Kremlin-Bicêtre, France
Full list of author information is available at the end of the article



Keywords: Lung edema, Transpulmonary thermodilution, Hemodynamic monitoring, Critically ill patients

Background

Extravascular lung water (EVLW) represents the amount of lung fluid outside the pulmonary vasculature, i.e. the cellular and extracellular fluid volume of the interstitial and alveolar spaces [1, 2]. As such, its elevation is an important pathophysiological pattern of hydrostatic pulmonary edema and acute respiratory distress syndrome (ARDS) [3]. The level of EVLW is correlated with the degree of diffuse alveolar damage in patients with ARDS [4].

Today, transpulmonary thermodilution (TPTD) is the only technique that allows the estimation of the total amount of EVLW [2]. This estimation has been validated against gravimetry, which is the reference method, in an autopsy study in humans [5]. It has been shown that TPTD is able to detect small and rapid increases in EVLW [6], contributing to the validation of the method.

Several studies have investigated the relationship between the amount of EVLW and mortality in septic patients [7], patients with ARDS [8] and critically ill patients in general [9]. Nevertheless, many of these studies were of small size [10, 11], some were retrospective [9, 12] and the link between EVLW and mortality reported by some of them was weak [13, 14]. A previous meta-analysis on the association of EVLW and mortality was performed ten years ago [15]. Nevertheless, it included studies in which EVLW had been evaluated through the double-indicator technique, which is not used anymore. Moreover, several other studies have since been performed. The relationship between the value of EVLW and outcome remains an important question. Confirming the prognostic value of EVLW may reinforce the clinical interest of the variable [16]. In addition, if it exists, it may indirectly contribute to confirming the reliability of its estimation by TPTD.

Methods

Clinical research question

The clinical research question was: What is the relationship between EVLW and mortality in critically ill patients?

PICO statement

The PICO statement was the following:

- P-patient, problem or population: Critically ill adult patients.
- I-intervention or exposure: Measurement of EVLW through the single indicator transpulmonary dilution method.
- C-comparison, control or comparator: Comparison of EVLW between survivors and non-survivors patients, considering either the baseline value or maximal value reached during the intensive care unit (ICU) stay.
- O-outcome: The primary outcome was the odds ratio (OR) of EVLW as a risk factor for mortality, defined either as in-hospital or 28-day or ICU mortality. The secondary outcome was mean differences between survivors and non-survivors in terms of EVLW value.

Identification of records

Our aim was to identify all studies evaluating the association between EVLW measured by TPTD, whatever the threshold used to define an elevated EVLW, and mortality in critically ill patients. We included in our analysis only studies that were published in full text or accepted for publication in indexed journals.

We searched the US National Library of Medicine's MEDLINE database, the Embase database, and the Cochrane Database of Systematic Reviews for relevant studies published from 1960 to 1 June, 2021. We used the following medical subject headings and keywords: "EVLW", "EVLW1", "lung water", "survival", and "mortality". The complete searching strategy is reported in Additional file 1: S1. We also looked for relevant articles cited in review articles, commentaries, editorials, and in the references of the original articles identified by our search. We excluded studies performed in children and in burned patients, studies published in languages other than English, and studies in which EVLW was estimated by methods different from TPTD. The search was performed by two authors (FG and RS) until no new records could be found. Conflicts regarding the inclusion or exclusion of studies were resolved by consensus with a third investigator (XM). The meta-analysis was performed according to the PRISMA statement [17] (Additional file 1: S2). The study protocol was prospectively registered in PROSPERO (CRD42019126985).

Data extraction

Using a standardized data form, we extracted several data elements from the included studies, including characteristics of the investigated population, the method used

to measure EVLW, and the timing at which EVLW was measured. We collected the OR with its 95% confidence interval (95% CI) of EVLW as a risk factor for mortality, if available. If data needed for the analysis were not retrievable from the text, tables or figures, we systematically asked them to the authors of the studies.

Assessment of risk of bias in included studies

Two authors (FG and RS) independently assessed the overall quality of evidence at the outcome level according to the Grading of Recommendations, Assessment, Development, and Evaluation (GRADE) system [18]. Moreover, they assessed the risk of bias of the included studies by following the criteria specified in the QUIPS tool [19]. It should be noted that this tool was not the one we initially planned to use for assessing the risk of bias (PROSPERO: CRD42019126985). For each criterion, the risk of bias was judged as high, moderate, or low. Disagreements between the reviewers were resolved by consensus with a third investigator (XM).

Statistical analysis

Pooled ORs were performed using continuity corrections [20]. Mean differences and standard deviation (SD) of the EVLW between survivors and non-survivors were considered. If a confidence interval of EVLW was reported, we converted it to SD for pooled analysis. The 95% CI was calculated using the Wilson method [21]. A random effects meta-analysis model was computed on the weighted mean differences (WMD) across the two groups to estimate the pooled size effect. A value of $I^2 \geq 75\%$ was considered as indicating a high heterogeneity [22].

To investigate the source of heterogeneity, pre-defined subgroup analyses were performed:

- Timing of EVLW measurement: baseline (≤ 48 h) versus maximal value
- EVLW indexation: actual versus predicted body weight
- Study population: ARDS versus non-ARDS
- Risk of bias: “moderate and low” versus “high”.

Publication bias was investigated using Deek’s test [23, 24]. The statistical significance was set at a p value < 0.05 . The analyses were performed by using Review Manager version 5.3, R 3.3.5 with metafor packages [25].

Results

Characteristics of the included studies

We included 18 studies that reported EVLW and mortality, with a total of 1296 patients enrolled [7, 8, 11–14, 26–37]. The flow chart is presented in Fig. 1. Data from nine

studies [7, 8, 13, 14, 26, 31, 32, 36, 37] that were missing in the published articles were obtained by direct contact with authors, or retrieved in our database for studies performed by our group.

The main characteristics of the studies are reported in Table 1. Nine studies were performed specifically in ARDS patients [8, 11, 14, 30, 33–37], seven in septic shock patients [7, 12, 27–29, 31, 32], and two in unselected critically ill patients [13, 26]. All studies were performed in patients admitted to the ICU. Of them, the OR of EVLW as a risk factor for mortality could be extracted from 11 studies [8, 12, 13, 26, 28–30, 32, 33, 36, 37]. In 17 studies [7, 8, 11–14, 26–35, 37], the value of EVLW was provided at baseline, i.e. at the first time, it was measured (Table 1). The maximal value of EVLW observed during the study period was available in ten studies [7, 8, 12–14, 31, 32, 34, 36, 37], one in unselected critically ill patients [13], five in patients with ARDS [8, 14, 34, 36, 37] and four in patients with septic shock [7, 12, 31, 32] (Table 1).

Mortality was defined as the 28-day mortality in seven studies [7, 8, 12–14, 27, 36], as the ICU mortality in nine [11, 26, 29–34, 37], and as the in-hospital mortality in two studies [28, 35] (Table 1). The results of the GRADE and the QUIPS evaluation are provided in Table 2 and Additional file 1: S3.

Association of EVLW with mortality

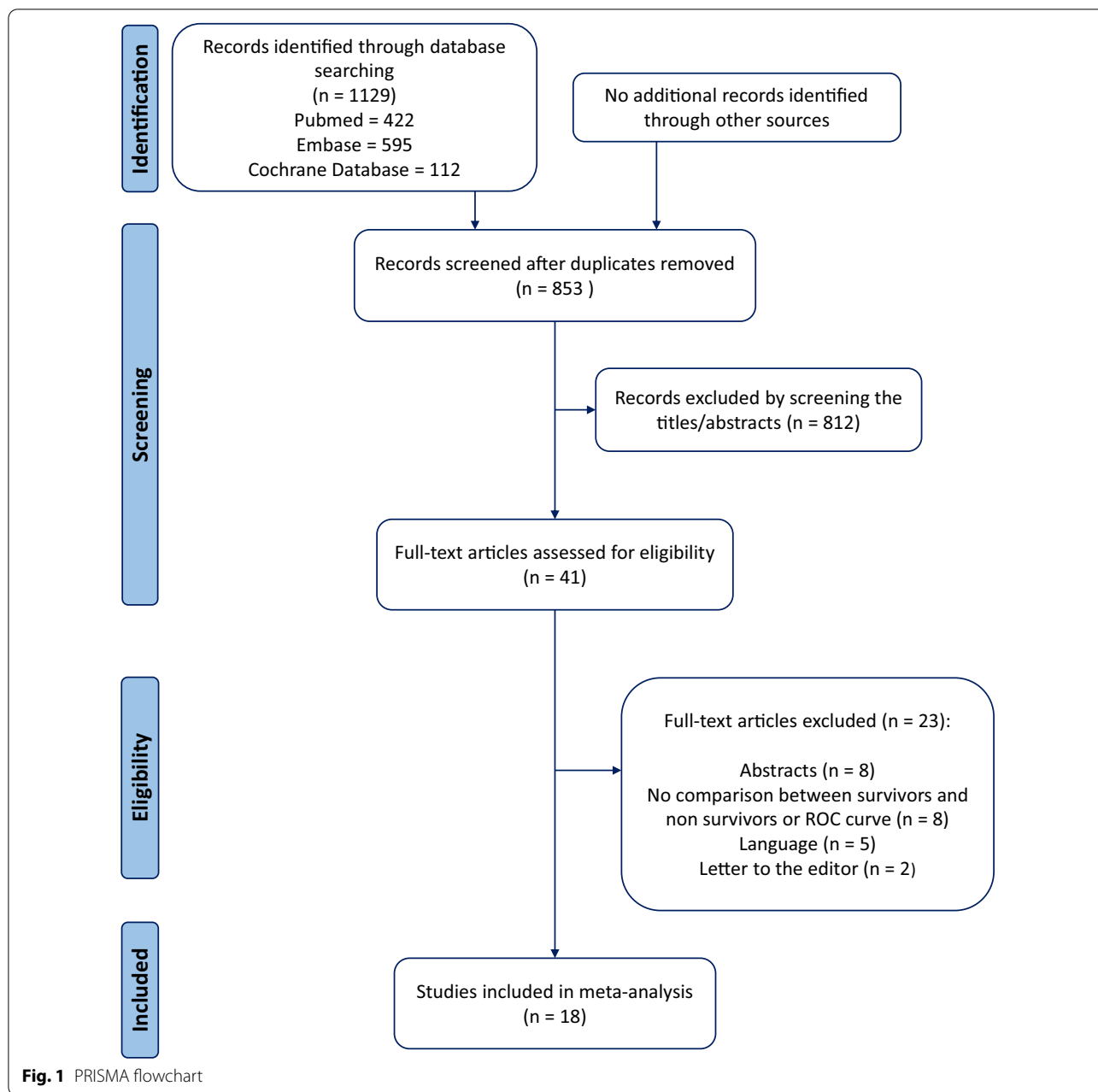
The pooled OR obtained from the 11 studies that reported OR [8, 12, 13, 26, 28–30, 32, 33, 36, 37] was 1.69 (95% CI [1.22; 2.34], $I^2 = 98.98\%$, $p < 0.0015$) (Fig. 2). Seventeen studies reported EVLW values of survivors and non-survivors, including 1 246 patients (680 survivors vs. 566 non-survivors) [7, 8, 11–14, 27–37] (Additional file 1: S4). The weighted mortality rates are presented in Additional file 1: Figure S5.

Overall, EVLW was significantly lower in survivors compared to non-survivors, with a mean difference of -4.97 mL/kg (95% CI [-6.54 ; -3.41], $p < 0.001$) (Fig. 3). Since the statistical heterogeneity was significant ($I^2 = 93.8\%$, $p < 0.001$), the random-effects model was used to pool the data. The results in the prespecified subgroups were as follows.

Baseline EVLW versus maximal EVLW

When comparing OR of EVLW as a risk factor for mortality between studies in which EVLW at baseline was reported [28–30, 33, 36] to those in which maximal EVLW was reported [8, 12, 13, 26, 32, 37], the EVLW remained to be a risk factor in both groups (OR of group baseline EVLW: 2.22, 95% CI [1.17; 4.20] vs. OR of group maximal EVLW: 1.48, 95% CI [1.01; 2.17], $p = 0.38$) (Additional file 1: Figure S6).

In the eight studies in which the EVLW at baseline was reported [11, 27–31, 33, 35], it was lower in



survivors than in non-survivors (WMD: -6.90 mL/kg, 95% CI $[-10.27; -3.53]$, $p < 0.001$). In the nine studies in which the maximal value of EVLW was reported [7, 8, 12–14, 32, 34, 36, 37], it was also lower in survivors than in non-survivors (WMD: -3.43 mL/kg, 95% CI $[-5.28; -1.59]$, $p < 0.001$). The WMD was not different between the two categories of studies ($p = 0.08$) (Additional file 1: Figure S7).

Actual versus predicted body weight for EVLW indexation

When comparing OR of EVLW as a risk factor for mortality between studies in which EVLW was indexed to actual body weight [13, 28, 32] to those in which it was indexed to predicted body weight [8, 12, 26, 29, 30, 32, 33, 36, 37], EVLW remained a risk factor in both groups (OR of actual body weight for EVLW indexation: 2.37, 95% CI $[1.47; 3.83]$ vs. OR of predicted body weight for EVLW indexation: 1.54, 95% CI $[1.13; 2.10]$, $p = 0.16$) (Additional file 1: Figure S8).

Table 1 Main characteristics of included studies

Study ID	Year	No. of patients	Country	Type of study	Setting	Type of patient	EVLW indexation	Outcome
Martin et al. [27]	2005	29	USA	Prospective	Medical ICU	Severe sepsis/septic shock	ABW	28-Day mortality
Kuzkov et al. [7]	2006	38	Russia	Prospective	Mixed ICU	Septic shock/ALI	ABW	28-Day mortality
Chung et al. [28]	2008	33	Taiwan	Prospective	Medical ICU	Severe sepsis/septic shock	ABW	In-hospital mortality
Phillips et al. [11]	2008	19	USA	Prospective	ICU	ARDS	PBW/ABW	ICU mortality
Chung et al. [29]	2010	67	Taiwan	Prospective	Medical ICU	Severe sepsis/septic shock	PBW	ICU mortality
Craig et al. [30]	2010	44	UK	Prospective	ICU	ALI/ARDS	PBW/ABW	ICU mortality
Chew et al. [31]	2012	51	Sweden	Prospective	Mixed ICU	Severe sepsis/septic shock	PBW/ABW	ICU mortality
Cordemans et al. [13]	2012	123	Belgium	Retrospective	ICU	Critically ill	ABW	28-Day mortality
Mallat et al. [32]	2012	55	France	Prospective	Mixed ICU	Septic shock	PBW/ABW	ICU mortality
Brown et al. [33]	2013	59	UK	Prospective	ICU	ALI/ARDS	PBW	ICU mortality
Jozwiak et al. [8]	2013	200	France	Retrospective	Medical ICU	ARDS	PBW	28-Day mortality
Huber et al. [26]	2014	50	Germany	Prospective	ICU	Critically ill	PBW	ICU mortality
Tagami et al. [14]	2014	192	Japan	Post-hoc analysis	ICU	ARDS	PBW	28-Day mortality
Zhao et al. [34]	2015	21	China	Prospective	ICU	ARDS	PBW	ICU mortality
Wang et al. [12]	2016	105	China	Retrospective	ICU	Septic shock	PBW	28-Day mortality
Ma et al. [35]	2019	41	China	Retrospective	ICU	ARDS	PBW	In-hospital mortality
Huber et al. [36]	2020	49	Germany	Prospective	ICU	ARDS	PBW	28-Day mortality
Shi et al. [37]	2021	120	France	Prospective	ICU	ARDS	PBW	ICU mortality

ABW actual body weight, ALI acute lung injury, ARDS acute respiratory distress syndrome, EVLW extravascular lung water, ICU intensive care unit, PBW predicted body weight, UK United Kingdom, USA United States of America

In the four studies that reported the EVLW indexed to actual body weight [7, 13, 27, 28], the survivors had significantly lower values of EVLW than non-survivors (WMD: -5.92 mL/kg, 95% CI [-11.09 ; -0.75], $p=0.02$). This was also the case in the 13 studies in which the EVLW was indexed to predicted body weight [8, 11, 12, 14, 29–37] (WMD: -4.64 mL/kg, 95% CI [-6.35 ; -2.94], $p<0.001$). The WMD was not different between the two groups ($p=0.65$) (Additional file 1: Figure S9).

ARDS population versus non-ARDS population

When comparing OR of EVLW acting as a risk factor for mortality between studies that included ARDS patients [8, 30, 33, 36, 37] to those that included non-ARDS patients [12, 13, 26, 28, 29, 32], EVLW remained a risk factor in both groups (OR in ARDS patients: 1.09, 95% CI [1.05, 1.14] vs. OR in non-ARDS patients: 1.83, 95% CI [1.20, 2.79], $p=0.57$) (Additional file 1: Figure S10).

In the nine studies dedicated to ARDS patients [8, 11, 14, 30, 33–37], the EVLW was lower in survivors than non-survivors (WMD: -5.16 mL/kg, 95% CI [-6.48 ; -3.84], $p<0.001$). This was also the case in the eight studies that included non-ARDS patients [7, 12, 13, 27–29, 31, 32] (WMD: -5.00 mL/kg, 95% CI [-7.65 ; -2.35], $p<0.001$).

No significant difference in WMD was observed between the two groups ($p=0.92$) (Additional file 1: Figure S11).

Risk of bias

When comparing studies according to the global risk of bias, there was no significant difference in OR between the studies with a high [26, 28, 30, 36] and moderate and low [8, 12, 13, 29, 32, 33, 37] risk of bias (OR of studies with low risk of bias: 1.46, 95% CI [1.10; 1.94] vs. OR in studies with a high risk of bias 2.62, 95% CI [1.04; 6.60], $p=0.37$) (Additional file 1: Figure S12).

In studies with a moderate and low risk of bias [8, 12–14, 29, 32, 33, 37], the EVLW was lower in survivors than in non-survivors (WMD: -3.80 mL/kg, 95% CI [-5.49 ; -2.11], $p<0.001$). This was also the case in the studies with a high risk of bias [7, 11, 27, 28, 30, 31, 34–36] (WMD: -5.83 mL/kg, 95% CI [-8.12 ; -3.54], $p<0.001$). No significant difference in WMD was observed between the two groups, $p=0.16$) (Additional file 1: Figure S13).

Publication bias

According to the results of Deek's test, the funnel plot asymmetry test revealed the absence of publication bias within the studies considered ($p=0.31$) (Additional file 1: Figure S14).

Table 2 The results of the Grading of Recommendations, Assessment, Development, and Evaluation (GRADE) assessment of the evidence certainty on the association between the extravascular lung water and mortality

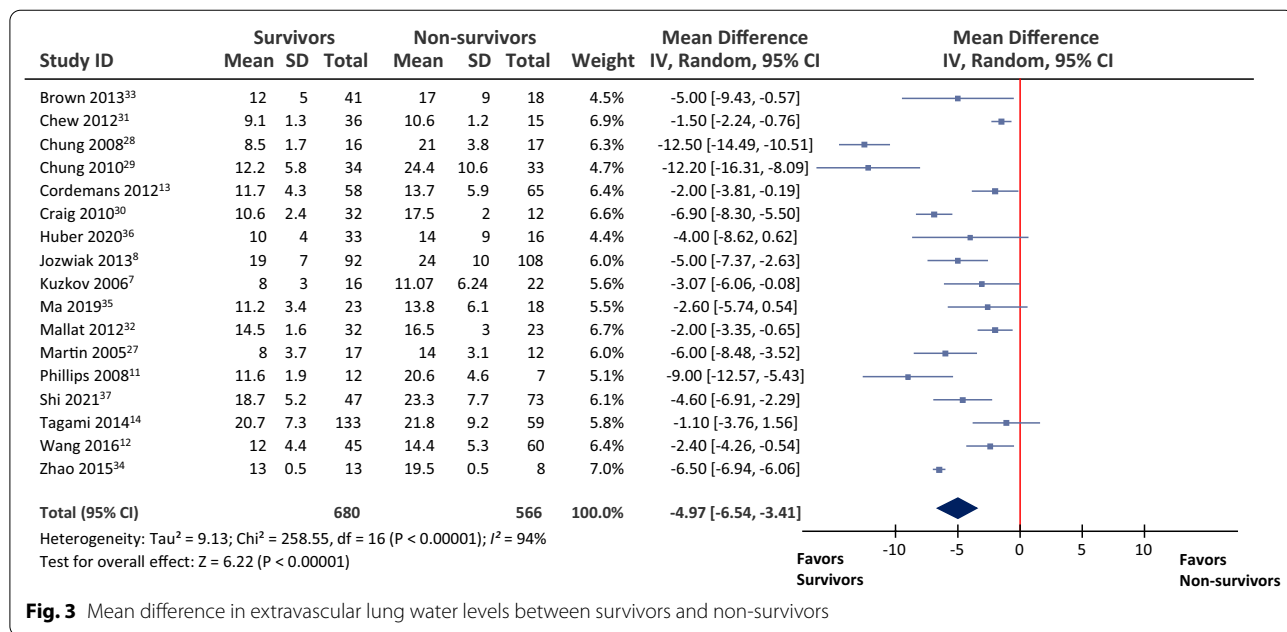
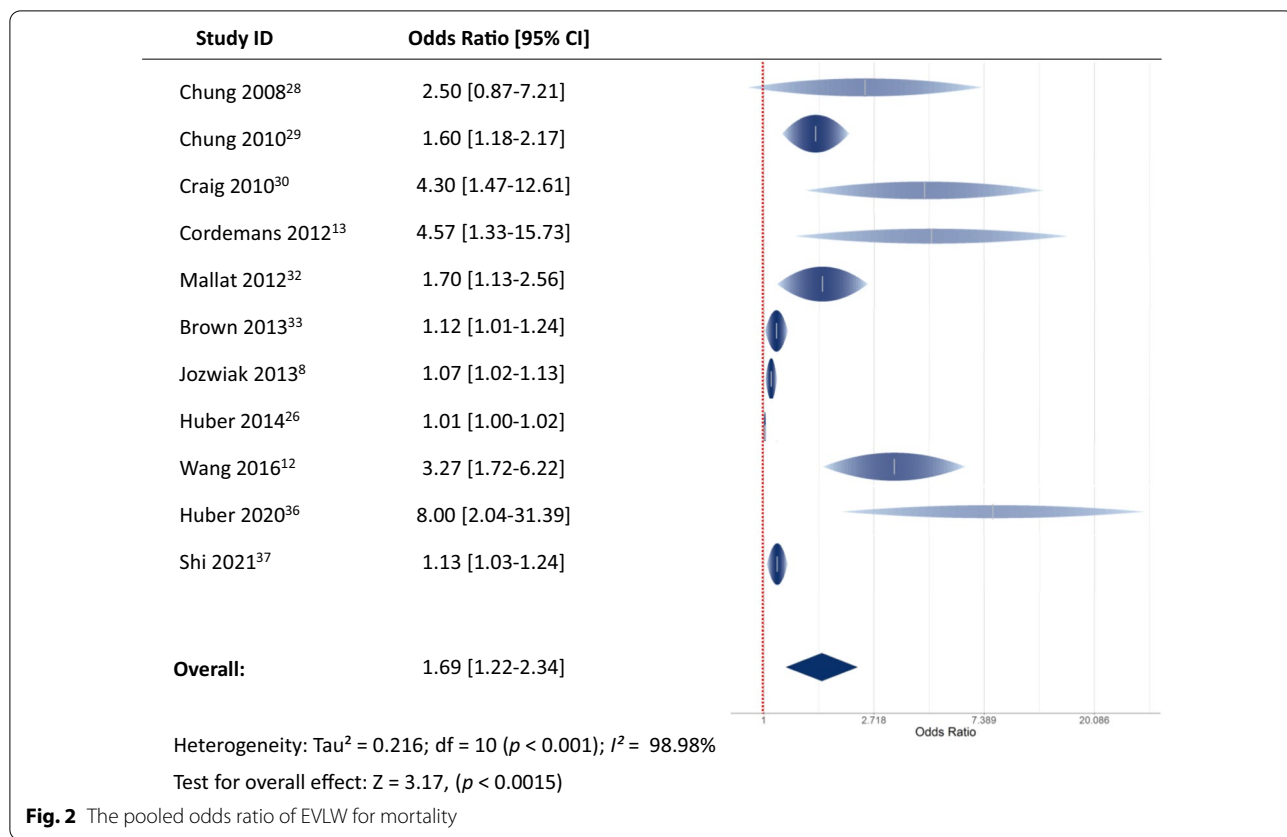
Outcome	Relative effect (95% CI)	No. of patients		No. of participants (studies)	Downgrade factors			Certainty of the evidence (GRADE) 18	
		Survivors	Non-survivors		Risk of bias	Inconsistency	Imprecision		Indirectness
Mortality	OR 1.69 (1.22–2.34)	464/905 (51.3%)	441/905 (48.7%)	905 Adult patients (11 studies)	Serious ^a	Serious ^b	Not serious	Not serious	⊕○○○ VERY LOW
	WMD –4.97 mL/kg (–6.54; –3.41)	680/1246 (54.6%)	566/1246 (45.4%)	1246 Adult patients (17 studies)	Serious ^a	Serious ^b	Not serious	Not serious	⊕○○○ VERY LOW

CI confidence interval, OR odds ratio, WMD weighted mean difference

^a Downgraded by one level for the risk of bias because ten of 18 studies were evaluated as high risk of bias according to the QUIPS tool and four of 11 studies did not report adjusted OR. Nevertheless, no differences regarding the relative effects were observed between high and moderate and low risk of bias in subgroup analysis

^b Downgraded by one level for inconsistency: substantial heterogeneity is seen between studies ($I^2 > 75\%$)

^c Downgraded by one level for indirectness because different cut-off values for elevated EVLW definition (> 7 mL/kg/m² in two studies, > 10 mL/kg/m² in eight studies, not available in eight studies)



Discussion

Our systematic review and meta-analysis of 18 studies, involving 1296 patients, suggests that an increased value of EVLW is associated with increased mortality compared to less elevated values in ICU patients. The levels of EVLW were less increased in survivors compared to non-survivors. However, due to the high risk of bias of included studies and the low rating of certainty of evidence according to the GRADE assessment, these conclusions should be considered with caution.

A major advantage of TPTD, which is part of the advanced monitoring techniques in critically ill patients [38–41], is to provide a bedside estimation of EVLW [42]. EVLW measured by TPTD has been demonstrated to reliably detect diffuse alveolar damage (DAD), which is the histologic pattern of ARDS [4, 43–45]. The severity of DAD is heterogeneous among ARDS patients, and this is in accordance with the heterogeneity of EVLW in this population, as we have recently observed for instance in ARDS patients with Coronavirus disease 2019 (COVID-19) [37]. Since the presence of DAD is associated with a poorer outcome in ARDS [44, 45], EVLW may reflect the severity of pulmonary lesions in critically ill patients.

However, most of the conclusions regarding the prognostic value of EVLW come from heterogeneous studies, performed in different settings and with different methodologies. While some authors reported a close relationship between EVLW values and outcome [11], others did not [14]. Moreover, some studies included only a small series of patients [11, 34]. The present meta-analysis may thus clarify the relationship between EVLW and outcome in ICU patients. We found that an increased value of EVLW is one of the prognostic factors for mortality in ICU patients. The OR of EVLW as a risk factor for mortality was 1.69 [1.22; 2.34]. Also, mortality was significantly higher in patients with the highest EVLW values, either at baseline or at its maximum, compared to patients with the lowest EVLW values.

The heterogeneity of the included studies was significant. However, the subgroup analyses for OR and WMD were conducted to investigate the sources of heterogeneity. The association between EVLW and mortality has been described at different times, i.e. baseline, Day-3, or when it reached its maximal value, likely because these timings highly depend on the time when the TPTD device was set up. Nevertheless, our subgroup analyses showed that an increase in EVLW remains an unfavourable prognostic factor, regardless of the timing at which it is measured. In addition, we found no difference between studies in which EVLW was indexed to predicted body weight and those in which it was indexed to actual body weight, regarding OR for mortality as well as mean differences between survivors and non-survivors. Nonetheless,

as the between-group difference between survivors and non-survivors was quite small and as the dimension of the lungs depends on the height of the patient rather than on actual weight fluctuations [26, 30], we still suggest indexing EVLW to the predicted body weight. EVLW was similarly associated with mortality in studies that specifically included ARDS patients and in studies with non-ARDS patients. This may suggest the value of EVLW for indicating disease severity not only in ARDS but also in other critically ill patients.

Since the risk of bias was estimated as high for many studies included and our results have “very low certainty of evidence” according to the GRADE assessment, our conclusions should be considered with caution. Obviously, EVLW should not be used to predict the outcome of ICU patients on an individual basis. There are many other prognostic factors in ICU patients. We rather believe that our results indirectly contribute to the recognition of TPTD for estimating EVLW. Indeed, EVLW measured by the technique would not be associated with the outcome if this estimation was unreliable. Although the estimation of EVLW by TPTD has been demonstrated to be correlated with the reference technique [46], reproducible [47], and able to detect small [48, 49] and rapid [6] variations, doubts may persist regarding its reliability [2, 3]. As the gold standard technique for measuring EVLW, namely gravimetry, can be performed only in cadavers, the validation of EVLW measurements in patients can only be indirect. The present meta-analysis may contribute to this indirect validation. Thus, our results suggest that clinicians may rely on the estimation of EVLW by TPTD. Besides, EVLW may help to identify patients with DAD and to grade the severity of ARDS [50, 51]. It may also be used in fluid management, as a marker indicating the risk of fluid administration, or as a guide for fluid removal [52]. Further studies should investigate the clinical interest of such strategies, describe the relationship between EVLW and respiratory mechanics, or evaluate the effect of some respiratory management such as prone position [53]. Studies testing the interest of integrating EVLW in the strategy of fluid management are also needed to better identify its clinical significance.

Our study suffers from many limitations. First, the OR of EVLW as a risk factor for mortality, which is the main factor to consider in meta-analyses on prognostic factors, was not provided in all the studies we included. Second, data for the comparison of the mean difference between survivors and non-survivors was not available in one of the included studies [26]. Nevertheless, this represents a minority (4%) of the whole cohort. Third, we did not obtain data regarding fluid balance since our principal objective was to confirm that EVLW measured by TPTD is associated

with a worse outcome. Fourth, we did not investigate EVLW as an adjunctive variable to other techniques, such as ultrasonography and bioelectrical impedance, to evaluate the fluid status [54]. Finally, we limited our search to articles published in English language and did not expand our search to clinical trial registry databases.

Conclusion

In conclusion, although limited by the low rating of certainty of the evidence, this meta-analysis suggests that elevated levels of EVLW measured by TPTD are associated with mortality in ICU patients. This finding may be interpreted as an indirect confirmation of the reliability of TPTD for estimating EVLW.

Abbreviations

ARDS: Acute respiratory distress syndrome; EVLW: Extravascular lung water; GRADE: Grading of Recommendations Assessment, Development and Evaluation; ICU: Intensive care unit; OR: Odds ratio; TPTD: Transpulmonary thermodilution; WMD: Weighted mean difference.

Supplementary Information

The online version contains supplementary material available at <https://doi.org/10.1186/s13054-022-04061-6>.

Additional file 1. Supplementary information on further results.

Acknowledgements

Not applicable.

Author contributions

FG acquired the data, performed data analysis and interpretation, and wrote the manuscript. RS acquired the data, performed data analysis and interpretation, and wrote the manuscript. J-LT conceived the study, participated in data analysis and interpretation, and contributed to writing the manuscript. DA performed data analysis and interpretation and contributed to writing the manuscript. PM acquired the data and contributed to data analysis. MJ acquired the data and contributed to data analysis. MSC contributed to data acquisition, provided original data, and contributed to writing the manuscript. WH performed studies integrated in the metaanalysis, and thus contributed to data acquisition. MK contributed to data acquisition, provided original data, and contributed to writing the manuscript. VVK contributed to data acquisition. TL contributed to data acquisition, provided original data, and contributed to writing the manuscript. MLNGM contributed to data acquisition, provided original data, and contributed to writing the manuscript. JM contributed to data acquisition, provided original data, and contributed to writing the manuscript. SGS contributed to data acquisition, provided original data, and contributed to writing the manuscript. TT contributed to data acquisition, provided original data, and contributed to writing the manuscript. TP participated in data analysis and interpretation, and contributed to writing the manuscript. XM conceived the study, performed data analysis and interpretation, and wrote the manuscript. FG, RS, J-LT, DA, PM, MJ, MSC, MK, VVK, TL, MLNGM, JM, SGS, TT, TP and XM reviewed the manuscript and approved its final version.

Funding

No funding.

Availability of data and materials

The datasets used and/or analysed in the present study are available from the corresponding author on reasonable request.

Declarations

Ethics approval and consent to participate

Not applicable.

Consent for publication

Not applicable.

Competing interests

Dr. Monnet is member of the Medical Advisory Board of Pulsion Medical Systems, Getinge. He received fees for scientific lectures from Baxter and Philips, and restricted research grants from Baxter. Dr. Teboul is member of the Medical Advisory Board of Pulsion Medical Systems, Getinge. Dr. Chew has received travel reimbursements and honoraria from Pulsion Medical Systems and Edwards Lifesciences. Dr. Huber was member of the Medical Advisory Board of Pulsion Medical Systems. Dr. Kirov is member of the Medical Advisory Boards of Pulsion Medical Systems and Philips. Dr. Lahmer received travel grants from Gilead, Pfizer and MSD. Dr. Malbrain is founding President of WSACS (The Abdominal Compartment Society, <http://www.wsacs.org>) and current Treasurer, he is also member of the medical advisory Board of Pulsion Medical Systems (Getinge) and Serenno Medical, and consults for ConvaTec, Acclity, Spiegelberg, and Holtech Medical. He is co-founder of the International Fluid Academy (IFA). The IFA is integrated within the not-for-profit charitable organization iMERIT, International Medical Education and Research Initiative, under Belgian law (<http://www.fluidacademy.org>). Dr. Sakka is member of the Medical Advisory Board of Pulsion Medical Systems. Dr. Tagami is member of the Medical Advisory Board of Pulsion Medical Systems. The other authors declare that they have no conflict of interest regarding this study.

Author details

¹Service de Médecine Intensive-Réanimation, AP-HP, Hôpital de Bicêtre, DMU CORREVE, 78, Rue du Général Leclerc, 94 270 Le Kremlin-Bicêtre, France. ²Emergency Medicine Unit, Department of Translational Medicine, Università degli Studi del Piemonte Orientale, Novara, Italy. ³Université Paris-Saclay, Inserm UMR S_999, FHU SEPSIS, CARMAS, Le Kremlin-Bicêtre, France. ⁴Department of Environmental and Preventive Science, University of Ferrara, Ferrara, Italy. ⁵Facultad de Medicina Clínica Alemana, Universidad del Desarrollo, Santiago, Chile. ⁶Service de Médecine Intensive Réanimation, Centre Hospitalier Universitaire l'Archet 1, 151 route Saint Antoine de Ginestière, 06200 Nice, France. ⁷Equipe 2 CARRES, UR2CA - Unité de Recherche Clinique Côte d'Azur, Université Côte d'Azur, Nice, France. ⁸Department of Anaesthesia and Intensive Care, Biomedical and Clinical Sciences, Linköping University, Linköping, Sweden. ⁹Il. Medizinische Klinik Und Poliklinik, Klinikum Rechts Der Isar der Technischen Universität München, Munich, Germany. ¹⁰Department of Anesthesiology and Intensive Care Medicine, Northern State Medical University, Arkhangelsk, Russia. ¹¹First Department Anaesthesiology and Intensive Therapy, Medical University of Lublin, Jaczewskiego Street 8, 20-954 Lublin, Poland. ¹²International Fluid Academy, Lovenjoel, Belgium. ¹³Department of Anesthesiology and Critical Care Medicine, Schaffner Hospital, Lens, France. ¹⁴Department of Critical Care Medicine, Cleveland Clinic Abu Dhabi, Abu Dhabi, United Arab Emirates. ¹⁵Department of Intensive Care Medicine, Gemeinschaftsklinikum Mittelrhein gGmbH, Academic Teaching Hospital of the Johannes Gutenberg University Mainz, Koblenz, Germany. ¹⁶Department of Emergency and Critical Care Medicine, Nippon Medical School Musashi Kosugi Hospital, Kawasaki, Kanagawa, Japan. ¹⁷Université Paris-Saclay, UVSQ Inserm U1018, Equipe d'Epidémiologie Respiratoire Intégrative, CESP, 94807 Villejuif, France.

Received: 15 January 2022 Accepted: 17 May 2022

Published online: 06 July 2022

References

- Jozwiak M, Teboul JL, Monnet X. Extravascular lung water in critical care: recent advances and clinical applications. *Ann Intensive Care*. 2015;5:38.
- Monnet X, Teboul JL. Transpulmonary thermodilution: advantages and limits. *Crit Care*. 2017;21:147.
- Tagami T, Ong MEH. Extravascular lung water measurements in acute respiratory distress syndrome: why, how, and when? *Curr Opin Crit Care*. 2018;24:209–15.

4. Tagami T, Sawabe M, Kushimoto S, Marik PE, Mieno MN, Kawaguchi T, et al. Quantitative diagnosis of diffuse alveolar damage using extravascular lung water. *Crit Care Med*. 2013;41:2144–50.
5. Tagami T, Kushimoto S, Yamamoto Y, Atsumi T, Tosa R, Matsuda K, et al. Validation of extravascular lung water measurement by single transpulmonary thermodilution: human autopsy study. *Crit Care*. 2010;14:R162.
6. Dres M, Teboul JL, Anguel N, Guerin L, Richard C, Monnet X. Extravascular lung water, B-type natriuretic peptide, and blood volume contraction enable diagnosis of weaning-induced pulmonary edema. *Crit Care Med*. 2014;42:1882–9.
7. Kuzkov VV, Kirov MY, Sovershaev MA, Kuklin VN, Suborov EV, Waerhaug K, et al. Extravascular lung water determined with single transpulmonary thermodilution correlates with the severity of sepsis-induced acute lung injury. *Crit Care Med*. 2006;34:1647–53.
8. Jozwiak M, Silva S, Persichini R, Anguel N, Osman D, Richard C, et al. Extravascular lung water is an independent prognostic factor in patients with acute respiratory distress syndrome. *Crit Care Med*. 2013;41:472–80.
9. Sakka SG, Klein M, Reinhart K, Meier-Hellmann A. Prognostic value of extravascular lung water in critically ill patients. *Chest*. 2002;122:2080–6.
10. Davey-Quinn A, Gedney JA, Whiteley SM, Bellamy MC. Extravascular lung water and acute respiratory distress syndrome—oxygenation and outcome. *Anaesth Intensive Care*. 1999;27:357–62.
11. Phillips CR, Chesnutt MS, Smith SM. Extravascular lung water in sepsis-associated acute respiratory distress syndrome: indexing with predicted body weight improves correlation with severity of illness and survival. *Crit Care Med*. 2008;36:69–73.
12. Wang H, Cui N, Su L, Long Y, Wang X, Zhou X, et al. Prognostic value of extravascular lung water and its potential role in guiding fluid therapy in septic shock after initial resuscitation. *J Crit Care*. 2016;33:106–13.
13. Cordemans C, De Laet I, Van Regenmortel N, Schoonheydt K, Dits H, Huber W, et al. Fluid management in critically ill patients: the role of extravascular lung water, abdominal hypertension, capillary leak, and fluid balance. *Ann Intensive Care*. 2012;2:S1.
14. Tagami T, Nakamura T, Kushimoto S, Tosa R, Watanabe A, Kaneko T, et al. Early-phase changes of extravascular lung water index as a prognostic indicator in acute respiratory distress syndrome patients. *Ann Intensive Care*. 2014;4:27.
15. Zhang Z, Lu B, Ni H. Prognostic value of extravascular lung water index in critically ill patients: a systematic review of the literature. *J Crit Care*. 2012;27(420):e1–8.
16. Tagami T, Sakka SG, Monnet X. Diagnosis and treatment of acute respiratory distress syndrome. *JAMA*. 2018;320:305.
17. Liberati A, Altman DG, Tetzlaff J, Mulrow C, Gøtzsche PC, Ioannidis JP, et al. The PRISMA statement for reporting systematic reviews and meta-analyses of studies that evaluate health care interventions: explanation and elaboration. *PLoS Med*. 2009;6:e1000100.
18. Foroutan F, Guyatt G, Zuk V, Vandvik PO, Alba AC, Mustafa R, et al. GRADE Guidelines 28: use of GRADE for the assessment of evidence about prognostic factors: rating certainty in identification of groups of patients with different absolute risks. *J Clin Epidemiol*. 2020;121:62–70.
19. Hayden JA, van der Windt DA, Cartwright JL, Côté P, Bombardier C. Assessing bias in studies of prognostic factors. *Ann Intern Med*. 2013;158:280–6.
20. Sweeting MJ, Sutton AJ, Lambert PC. What to add to nothing? Use and avoidance of continuity corrections in meta-analysis of sparse data. *Stat Med*. 2004;23:1351–75.
21. Wilson EB. Probable Inference, the Law of Succession, and Statistical Inference. *J Am Stat Assoc*. 1927;22:209–12.
22. Hunter JE, Schmidt FL. *Methods of Meta-Analysis: Correcting Error and Bias in Research Findings*. 3rd ed. London: Sage; 2015.
23. Deeks JJ, Macaskill P, Irwig L. The performance of tests of publication bias and other sample size effects in systematic reviews of diagnostic test accuracy was assessed. *J Clin Epidemiol*. 2005;58:882–93.
24. Crisp A, Miller S, Thompson D, Best N. Practical experiences of adopting assurance as a quantitative framework to support decision making in drug development. *Pharm Stat*. 2018;17:317–28.
25. Viechtbauer W. Conducting meta-analyses in R with the metafor package. *J Stat Softw*. 2010;36:1–48.
26. Huber W, Höllthaler J, Schuster T, Umgelter A, Franzen M, Saugel B, et al. Association between different indexations of extravascular lung water (EVLW) and PaO₂/FiO₂: a two-center study in 231 patients. *PLoS ONE*. 2014;9:e103854.
27. Martin GS, Eaton S, Mealer M, Moss M. Extravascular lung water in patients with severe sepsis: a prospective cohort study. *Crit Care*. 2005;9:R74–82.
28. Chung FT, Lin SM, Lin SY, Lin HC. Impact of extravascular lung water index on outcomes of severe sepsis patients in a medical intensive care unit. *Respir Med*. 2008;102:956–61.
29. Chung FT, Lin HC, Kuo CH, Yu CT, Chou CL, Lee KY, et al. Extravascular lung water correlates multiorgan dysfunction syndrome and mortality in sepsis. *PLoS ONE*. 2010;5:e15265.
30. Craig TR, Duffy MJ, Shyamsundar M, McDowell C, McLaughlin B, Elborn JS, et al. Extravascular lung water indexed to predicted body weight is a novel predictor of intensive care unit mortality in patients with acute lung injury. *Crit Care Med*. 2010;38:114–20.
31. Chew MS, Ihrman L, Doring J, Bergenzaun L, Ersson A, Undén J, et al. Extravascular lung water index improves the diagnostic accuracy of lung injury in patients with shock. *Crit Care*. 2012;16:R1.
32. Mallat J, Pepy F, Lemyze M, Barrailler S, Gasan G, Tronchon L, et al. Extravascular lung water indexed or not to predicted body weight is a predictor of mortality in septic shock patients. *J Crit Care*. 2012;27:376–83.
33. Brown LM, Calfee CS, Howard JP, Craig TR, Matthay MA, McAuley DF. Comparison of thermodilution measured extravascular lung water with chest radiographic assessment of pulmonary oedema in patients with acute lung injury. *Ann Intensive Care*. 2013;3:25.
34. Zhao Z, Jiang L, Xi X, Jiang Q, Zhu B, Wang M, et al. Prognostic value of extravascular lung water assessed with lung ultrasound score by chest sonography in patients with acute respiratory distress syndrome. *BMC Pulm Med*. 2015;15:98.
35. Ma S, Zhao ML, Wang K, Yue YF, Sun RQ, Zhang RM, et al. Association of Ang-2, vWF, and EVLWI with risk of mortality in sepsis patients with concomitant ARDS: a retrospective study. *J Formos Med Assoc*. 2020;119:950–6.
36. Huber W, Findeisen M, Lahmer T, Herner A, Rasch S, Mayr U, et al. Prediction of outcome in patients with ARDS: a prospective cohort study comparing ARDS-definitions and other ARDS-associated parameters, ratios and scores at intubation and over time. *PLoS ONE*. 2020;15:e0232720.
37. Shi R, Lai C, Teboul JL, Dres M, Moretto F, De Vita N, et al. COVID-19 ARDS is characterized by higher extravascular lung water than non-COVID-19 ARDS: the PiCCOVID study. *Crit Care*. 2021;25:186.
38. Bernards J, Mekeirele M, Hoffmann B, Peeters Y, De Raes M, Malbrain ML. Hemodynamic monitoring: to calibrate or not to calibrate? Part 2—Non-calibrated techniques. *Anaesthesiol Intensive Ther*. 2015;47:501–16.
39. Cecconi M, De Backer D, Antonelli M, Beale R, Bakker J, Hofer C, et al. Consensus on circulatory shock and hemodynamic monitoring. Task force of the European Society of Intensive Care Medicine. *Intensive Care Med*. 2014;40:1795–815.
40. Hofkens PJ, Verrijcken A, Merveille K, Neiryck S, Van Regenmortel N, De Laet I, et al. Common pitfalls and tips and tricks to get the most out of your transpulmonary thermodilution device: results of a survey and state-of-the-art review. *Anaesthesiol Intensive Ther*. 2015;47:89–116.
41. Peeters Y, Bernards J, Mekeirele M, Hoffmann B, De Raes M, Malbrain ML. Hemodynamic monitoring: to calibrate or not to calibrate? Part 1—Calibrated techniques. *Anaesthesiol Intensive Ther*. 2015;47:487–500.
42. Teboul JL, Saugel B, Cecconi M, De Backer D, Hofer CK, Monnet X, et al. Less invasive hemodynamic monitoring in critically ill patients. *Intensive Care Med*. 2016;42:1350–9.
43. Cardinal-Fernández P, Lorente JA, Ballén-Barragán A, Matute-Bello G. Acute respiratory distress syndrome and diffuse alveolar damage. New insights on a complex relationship. *Ann Am Thorac Soc*. 2017;14:844–50.
44. Cardinal-Fernández P, Bajwa EK, Dominguez-Calvo A, Menéndez JM, Papazian L, Thompson BT. The presence of diffuse alveolar damage on open lung biopsy is associated with mortality in patients with acute respiratory distress syndrome: a systematic review and meta-analysis. *Chest*. 2016;149:1155–64.
45. Cardinal-Fernandez P, Ortiz G, Chang CH, Kao KC, Bertreau E, Philipponnet C, et al. Predicting the impact of diffuse alveolar damage through open lung biopsy in acute respiratory distress syndrome—The PREDATOR Study. *J Clin Med*. 2019;8:829.

46. Tagami T, Kushimoto S, Tosa R, Omura M, Hagiwara J, Hirama H, et al. The precision of PiCCO® measurements in hypothermic post-cardiac arrest patients. *Anaesthesia*. 2012;67:236–43.
47. Monnet X, Persichini R, Ktari M, Jozwiak M, Richard C, Teboul JL. Precision of the transpulmonary thermodilution measurements. *Crit Care*. 2011;15:R204.
48. Dres M, Teboul JL, Guerin L, Anguel N, Amilien V, Clair MP, et al. Transpulmonary thermodilution enables to detect small short-term changes in extravascular lung water induced by a bronchoalveolar lavage. *Crit Care Med*. 2014;42:1869–73.
49. Gavelli F, Teboul JL, Azzolina D, Beurton A, Taccheri T, Adda I, et al. Transpulmonary thermodilution detects rapid and reversible increases in lung water induced by positive end-expiratory pressure in acute respiratory distress syndrome. *Ann Intensive Care*. 2020;10:28.
50. Perel A. Extravascular lung water and the pulmonary vascular permeability index may improve the definition of ARDS. *Crit Care*. 2013;17:108.
51. Kushimoto S, Endo T, Yamanouchi S, Sakamoto T, Ishikura H, Kitazawa Y, et al. Relationship between extravascular lung water and severity categories of acute respiratory distress syndrome by the Berlin definition. *Crit Care*. 2013;17:R132.
52. Compton F, Hoffmann C, Zidek W, Schmidt S, Schaefer JH. Volumetric hemodynamic parameters to guide fluid removal on hemodialysis in the intensive care unit. *Hemodial Int*. 2007;11:231–7.
53. McAuley DF, Giles S, Fichter H, Perkins GD, Gao F. What is the optimal duration of ventilation in the prone position in acute lung injury and acute respiratory distress syndrome? *Intensive Care Med*. 2002;28:414–8.
54. Cleymaet R, Scheinok T, Maes H, Stas A, Malbrain L, De Laet I, et al. Prognostic value of bioelectrical impedance analysis for assessment of fluid overload in ICU patients: a pilot study. *Anaesthesiol Intensive Ther*. 2021;53:10–7.

Publisher's Note

Springer Nature remains neutral with regard to jurisdictional claims in published maps and institutional affiliations.

Ready to submit your research? Choose BMC and benefit from:

- fast, convenient online submission
- thorough peer review by experienced researchers in your field
- rapid publication on acceptance
- support for research data, including large and complex data types
- gold Open Access which fosters wider collaboration and increased citations
- maximum visibility for your research: over 100M website views per year

At BMC, research is always in progress.

Learn more biomedcentral.com/submissions

