



**HAL**  
open science

# Singular nonlinear problems with natural growth in the gradient

Boussad Hamour

► **To cite this version:**

Boussad Hamour. Singular nonlinear problems with natural growth in the gradient. *Mathematical Modelling and Analysis*, 2024, 29 (2), pp.367-386. 10.3846/mma.2024.17948 . hal-04521520

**HAL Id: hal-04521520**

**<https://hal.science/hal-04521520>**

Submitted on 26 Mar 2024

**HAL** is a multi-disciplinary open access archive for the deposit and dissemination of scientific research documents, whether they are published or not. The documents may come from teaching and research institutions in France or abroad, or from public or private research centers.

L'archive ouverte pluridisciplinaire **HAL**, est destinée au dépôt et à la diffusion de documents scientifiques de niveau recherche, publiés ou non, émanant des établissements d'enseignement et de recherche français ou étrangers, des laboratoires publics ou privés.

# Singular nonlinear problems with natural growth in the gradient

**Boussad Hamour**

*Laboratoire Equations aux dérivées partielles non linéaires et Histoire des mathématiques*

*Ecole Normale Supérieure B. Ibrahimi, Kouba.*

Boîte Postale 92, Vieux Kouba, 16050 Alger, Algérie

E-mail: hamour@ens-kouba.dz

**Abstract.** In this paper we consider the following problem:

$$\begin{cases} -\operatorname{div}(a(x, u, Du)) = H(x, u, Du) + \frac{a_0(x)}{|u|^\theta} + \chi_{\{u \neq 0\}} f(x) & \text{in } \Omega, \\ u = 0 & \text{on } \partial\Omega, \end{cases}$$

where  $\Omega$  is an open bounded set of  $\mathbb{R}^N$ ,  $1 < p < N$ ,  $-\operatorname{div}(a(x, u, Du))$  is a Leray-Lions operator defined on  $W_0^{1,p}(\Omega)$ ,  $a_0 \in L^{N/p}(\Omega)$ ,  $a_0 > 0$ ,  $0 < \theta \leq 1$ ,  $\chi_{\{u \neq 0\}}$  is a characteristic function,  $f \in L^{N/p}(\Omega)$  and  $H(x, s, \xi)$  is a Carathéodory function which satisfies:

$$-c_0 a(x, s, \xi) \xi \leq H(x, s, \xi) \operatorname{sign}(s) \leq \gamma a(x, s, \xi) \xi \quad \text{a.e. } x \in \Omega, \forall s \in \mathbb{R}, \forall \xi \in \mathbb{R}^N.$$

For  $\|a_0\|_{N/p}$  and  $\|f\|_{N/p}$  sufficiently small, we prove the existence of at least one solution  $u$  of this problem which is moreover such that the function  $\exp(\delta|u|) - 1$  belongs to  $W_0^{1,p}(\Omega)$  for some  $\delta \geq \gamma$ . This solution satisfies some a priori estimates in  $W_0^{1,p}(\Omega)$ .

**Keywords:** Nonlinear problems, existence, singularity.

**AMS Subject Classification:** 35J60; 35J75.

## 1 Introduction

In this paper, we consider the quasilinear problem

$$\begin{cases} u \in W_0^{1,p}(\Omega), \\ -\operatorname{div}(a(x, u, Du)) = H(x, u, Du) + \frac{a_0(x)}{|u|^\theta} + \chi_{\{u \neq 0\}} f(x) & \text{in } \mathcal{D}'(\Omega), \end{cases} \quad (1.1)$$

where  $\Omega$  is an open bounded subset of  $\mathbb{R}^N$ ,  $1 < p < N$ ,  $-\operatorname{div}(a(x, u, Du))$  is a Leray-Lions operator defined on  $W_0^{1,p}(\Omega)$  and  $H(x, u, Du)$  is a Carathéodory function with natural growth in  $|Du|^p$ , and more precisely satisfies:

$$|H(x, s, \xi)| \leq c|\xi|^p. \quad (1.2)$$

for some positive constant  $c$ .

We assume that  $a_0 \in L^{N/p}(\Omega)$ ,  $a_0 > 0$ ,  $0 < \theta \leq 1$ ,  $\chi_{\{u \neq 0\}}$  is a characteristic function and  $f \in L^{N/p}(\Omega)$ .

When  $a_0$  and  $f$  are sufficiently small, that is they satisfy the smallness condition (2.11), we prove in the present paper the existence of at least one solution  $u$  of (1.1) which is moreover such that the function

$$(e^{\mu|u|} - 1) \in W_0^{1,p}(\Omega),$$

with

$$\left\| \mu^{-1}(e^{\mu|u|} - 1) \right\|_{W_0^{1,p}(\Omega)} \leq Z_\delta, \quad (1.3)$$

where  $\mu$  is in an interval  $(0, \mu_0)$ , which depends on the norms of  $a_0$  and  $f$ , the bound of  $H$  and the coercivity of  $a$ , and the nonnegative constant  $Z_\delta$  is given in (3.25).

A similar result has been proved in [19] in the quasilinear case  $p = 2$  and where the function  $a(x, s, \xi)$  is assumed to have the form  $a(x, s, \xi) = A(x)\xi$ , with being  $A(x)$  a matrix bounded entries and coercive. In that setting the change of unknown function  $w = \mu^{-1}(e^{\mu|u|} - 1) \operatorname{sign}(u)$  transforms equation (2.1) in a quasilinear equation with a quadratic term which satisfies a “sign condition”.

The proof used in the present paper follows along the lines of the proof in [12], [13], [18] and [19] and can be obtained as follows.

We first consider a sequence of problems which approximate (2.1), obtained by truncation of the functions  $H(x, s, \xi)$ ,  $a_0(x)$  and  $f(x)$  at level  $n$ , with  $n \in \mathbb{N}^*$ , thanks to Leray-Lions theorem (see [20], [21]), this approximation guarantees the existence of solution  $u_n$  of (3.19).

Once the solution of the approximate problem has been obtained, we perform the change of unknown function  $w_n = \mu^{-1}(e^{\mu|u_n|} - 1) \operatorname{sign}(u_n)$ , we then obtain equation (3.8) which is equivalent to (3.4). Thanks to the smallness condition, we obtain the a priori estimate of  $w_n$  which does not depend on  $n$ , and we extract a subsequence denoted  $w_n$  such that  $w_n$  weakly converges in  $W_0^{1,p}(\Omega)$  to some  $w$ , and we prove that  $w_n$  strongly converges in  $W_0^{1,p}(\Omega)$ . By equivalent Theorem 2, we obtain the strong convergence of  $u_n$ . Another difficulty is the passage to the limit of the singular term, for that we use the method introduced in [16], and more precisely we treat a control of strong

$$\int_{\{|u_n| \leq \nu\}} \frac{a_n(x)}{(|u_n| + \frac{1}{n})^\theta} \varphi dx \text{ when } \nu \text{ is small.}$$

Compared to the results obtained in the latest papers, we prove in the present paper, as said above, the existence at least one solution of (2.1) in the case (2.7) (i.e.  $a_0 \geq 0$ ) when  $a_0$  and  $f$  satisfy the smallness condition (2.11), but our result is obtained in the general case of a nonlinearity  $H(x, s, \xi)$  which

satisfies only (2.5) with  $f \in L^{N/p}(\Omega)$  and with  $a_0$  to  $L^{N/p}(\Omega)$ .

Let us begin some review of the literature, the problem (2.1) has been extensively studied by many authors in the case  $a(x, u, Du) = A(x)Du$ ,  $H(x, u, Du) = 0$ ,  $f(x) = 0$  and  $a_0(x)$  is smooth (see, for instance, [1], [2], [3], [4], [6], [7], [8], [9], [10], [11], [22], [23] and [25]).

In [14], the authors studied a singular elliptic problem whose model is

$$\begin{cases} -\Delta u = \frac{|\nabla u|^2}{|u|^\theta} + f(x) & \text{in } \Omega, \\ u = 0 & \text{on } \partial\Omega, \end{cases}$$

where  $\theta \in (0, 1)$  and the datum  $f$  has no constant sign and belongs to  $L^m(\Omega)$ , with  $m \geq \frac{N}{2}$ , and prove the existence of a solution.

In [25], the author considered the following two classes of singular boundary value problems

$$\begin{cases} -\Delta u \mp \lambda \frac{|\nabla u|^2}{|u|^\theta} = f(x)u^{-\alpha} \\ u > 0 \text{ in } \Omega, \quad u = 0 \text{ on } \partial\Omega, \end{cases}$$

where  $\lambda > 0$ ,  $\theta > 0$ ,  $\alpha > -1$  and the datum  $f$  satisfies some property.

In [16] and [17], the authors proved the existence of at least one nonnegative solution and a stability result for the following problem

$$\begin{cases} -\operatorname{div}(A(x)Du) = f(x)g(u) + l(x) & \text{in } \Omega, \\ u = 0 & \text{on } \partial\Omega, \end{cases}$$

where  $A(x) \in L^\infty(\Omega)^{N \times N}$  is a coercive matrix,  $g : [0, +\infty) \rightarrow [0, +\infty)$  is continuous and  $0 \leq g(s) \leq \frac{1}{s^\theta} + 1$ ,  $\forall s > 0$ ,  $0 < \theta \leq 1$ ; and  $f, l \in L^r(\Omega)$  where  $r$  satisfies some conditions. In [7], the authors proved the existence, regularity and nonexistence results for problems whose model is

$$-\Delta u = \frac{f(x)}{u^\theta} \text{ in } \Omega,$$

with  $u = 0$  on  $\partial\Omega$ ,  $\Omega$  is bounded open of  $\mathbb{R}^N$ ,  $\theta > 0$  and  $f$  is nonnegative function on  $\Omega$  and belongs to some Lebesgue spaces. For this, they have introduced an approximate problem by treating the singular term  $\frac{1}{u^\theta}$  and construct an increasing sequence  $(u_n)_{n \in \mathbb{N}}$  of solutions to nonsingular problem

$$\begin{cases} -\operatorname{div}(A(x)Du_n) = \frac{f_n(x)}{(u_n + \frac{1}{n})^\theta} & \text{in } \Omega, \\ u_n = 0 & \text{on } \partial\Omega, \end{cases}$$

where  $f_n = \min(f(x), n)$ . This sequence satisfies, for any  $\omega \subset\subset \Omega$ , and

$$u_n \geq u_{n-1} \geq \dots \geq u_1 \geq C_\omega, \quad \forall x \in \omega.$$

The authors discussed in [2] the solution of the elliptic problem, with a gradient term and a singular nonlinearity

$$\begin{cases} -\Delta u = |\nabla u|^q + \frac{f}{g(u)} & \text{in } \Omega, \\ u > 0 \text{ in } \Omega \text{ and } u = 0 \text{ on } \partial\Omega, \end{cases}$$

where  $\Omega \subset \mathbb{R}^N$  is a bounded regular domain,  $g : \mathbb{R}_+ \rightarrow \mathbb{R}$  is a continuous increasing function with additional hypotheses given,  $1 < q \leq 2$  and  $f$  is a measurable nonnegative function and obtained optimal conditions on  $g$ ,  $q$  which allow to get the existence positive solution for the largest possible class of datum  $f$ .

## 2 Existence result and comments

As said in this introduction we study in this paper the existence of the solutions to the following singular nonlinear problem

$$\begin{cases} u \in W_0^{1,p}(\Omega), \\ -\operatorname{div} a(x, u, Du) = H(x, u, Du) + \frac{a_0(x)}{|u|^\theta} + \chi_{\{u \neq 0\}} f(x) \quad \text{in } \mathcal{D}'(\Omega), \end{cases} \quad (2.1)$$

where

$$\Omega \text{ is a bounded open subset of } \mathbb{R}^N \text{ and } 1 < p < N. \quad (2.2)$$

The function  $a : \Omega \times \mathbb{R} \times \mathbb{R} \rightarrow \mathbb{R}^N$  is a Carathéodory function which also satisfies, for a.e.  $x \in \Omega$ , any  $s \in \mathbb{R}$  and any  $\xi, \xi' \in \mathbb{R}^N$ , with  $\xi \neq \xi'$ :

$$\begin{cases} (a(x, s, \xi) - a(x, s, \xi'))(\xi - \xi') > 0, \\ a(x, s, \xi)\xi \geq \alpha|\xi|^p, \\ |a(x, s, \xi)| \leq \beta(b(x) + |s|^{p-1} + |\xi|^{p-1}), \end{cases} \quad (2.3)$$

for a given constant  $\alpha > 0$ , some constant  $\beta > 0$ , some nonnegative function  $b \in L^{N/(p-1)}(\Omega)$ , and which is moreover satisfies that

$$a(x, -s, -\xi) = -a(x, s, \xi) \quad \text{a.e. } x \in \Omega, \quad \forall s \in \mathbb{R}, \quad \forall \xi \in \mathbb{R}^N, \quad (2.4)$$

the nonlinearity  $H(x, s, \xi)$  is a Carathéodory function with a natural growth in  $\xi$ , and more precisely satisfies

$$\begin{cases} -c_0 a(x, s, \xi)\xi \leq H(x, s, \xi) \operatorname{sign}(s) \leq \gamma a(x, s, \xi)\xi, \\ \text{a.e. } x \in \Omega, \quad \forall s \in \mathbb{R}, \quad \forall \xi \in \mathbb{R}^N, \\ \text{where } \gamma > 0 \text{ and } c_0 \geq 0, \end{cases} \quad (2.5)$$

the function  $\operatorname{sign}$  being defined by

$$\operatorname{sign}(s) = \begin{cases} +1 & \text{if } s > 0, \\ 0 & \text{if } s = 0, \\ -1 & \text{if } s < 0, \end{cases} \quad (2.6)$$

the coefficient  $a_0$  satisfies

$$a_0 \in L^{N/p}(\Omega), \quad a_0 \geq 0, \quad a_0 \not\equiv 0, \quad (2.7)$$

the exponent  $\theta$  satisfies

$$0 < \theta \leq 1, \quad (2.8)$$

and finally

$$f \in L^{N/p}(\Omega). \tag{2.9}$$

Since  $N > p$ , let  $p^*$  be the Sobolev's exponent defined by

$$\frac{1}{p^*} = \frac{1}{p} - \frac{1}{N},$$

and let  $C_{N,p}$  be the Sobolev's constant defined as the best constant such that

$$\|\varphi\|_{p^*} \leq C_{N,p} \|D\varphi\|_p, \quad \forall \varphi \in W_0^{1,p}(\Omega). \tag{2.10}$$

Since  $\Omega$  is a bounded, we equip the space of  $W_0^{1,p}(\Omega)$  with the norm

$$\|u\|_{W_0^{1,p}(\Omega)} = \|Du\|_{(L^p(\Omega))^N}$$

Finally, we assume that  $\|a_0\|_{N/p}$  and  $\|f\|_{W^{-1,p'}(\Omega)}$  are sufficiently small (see Remark 2, below), and more precisely that

$$C_\lambda(\theta) \|a_0\|_{N/p} + \|f\|_{N/p} \leq \left(\frac{p-1}{\gamma}\right)^{p-1} \frac{\alpha}{C_{N,p}^p}, \tag{2.11}$$

where  $C_\lambda(\theta)$  is defined by

$$C_\lambda(\theta) = \left(\frac{\lambda}{\ln(1+\lambda)}\right)^\theta, \quad \text{where } \lambda = \frac{\gamma}{p-1}.$$

Our main result is the following.

**Theorem 1.** *Assume that (2.2), (2.3), (2.5), (2.7), (2.8) and (2.9) hold true. Assume moreover that (2.11) holds true,*

*Then there exists at least one solution of (2.1), which further satisfies that:*

$$\begin{aligned} (e^{\delta|u|} - 1) &\in W_0^{1,p}(\Omega), \quad \forall \delta \geq \gamma \text{ such that} \\ C_\mu(\theta) \|a_0\|_{N/p} + \|f\|_{N/p} &\leq \frac{\alpha}{\mu^{p-1} C_{N,p}^p}, \end{aligned} \tag{2.12}$$

where  $C_\mu(\theta)$  is the constant defined by

$$C_\mu(\theta) = \left(\frac{\mu}{\ln(1+\mu)}\right)^\theta. \tag{2.13}$$

*Remark 1.* In the case where the function  $H(x, s, \xi) = H(x, \xi)$  does not depend on  $s$ , assumption (2.5) is satisfied if and only if

$$|H(x, \xi)| \leq c a(x, s, \xi) \xi,$$

for some  $c > 0$ .

When  $\gamma = 0$  in (2.5), the nonlinearity function  $H(x, \xi)$  satisfies a sign condition and existence result can be proved for every  $f \in W^{-1,p'}(\Omega)$ .

*Remark 2.* In this Remark, we consider that the open set  $\Omega$ , the functions  $a$  and  $H$  are fixed and the functions  $a_0$  and  $f$  as parameters.

Our set of assumptions on these parameters is made of the smallness condition (2.11).

Indeed, if, for example,  $a_0$  is sufficiently small such that it satisfies

$$\|a_0\|_{N/p} \leq \frac{\alpha}{\mu^{p-1} C_\lambda(\theta) C_{N,p}^p} \quad (C_\lambda(\theta) \geq 1),$$

then the smallness condition (2.11) is satisfied if  $\|f\|_{N/p}$  is sufficiently small.

Similarly, if, for example,  $f$  is sufficiently small that it satisfies

$$\|f\|_{N/2} \leq \frac{\alpha}{\gamma C_N^2},$$

then, the smallness condition (2.11) is satisfied if  $\|a_0\|_{N/p}$  is sufficiently small.

*Remark 3.* The smallness condition (2.11) shows that  $\delta$  as parameter is bounded and satisfies

$$0 < \gamma \leq \delta \leq \frac{(p-1) \alpha^{\frac{1}{p-1}}}{C_{N,p}^{\frac{p-1}{p}} \|a_0\|_{N/p}^{\frac{1}{p-1}}}.$$

*Remark 4.* The definition of the constant  $Z_\delta$  which appears in (1.3) and (3.25) is given in (the technical) Appendix (see Lemma 1). This definition is based on the properties of the family of functions  $\Phi_\delta$  (see (4.1)) which look like convex parabolas (see Figure 1):  $Z_\delta$  is the unique value which satisfies  $\Phi_\delta(Z_\delta) = 0$ .

### 3 Proof of Theorem 1

The proof will be made in seven steps.

**Step 1:** *Approximation and change of unknown function.*

For  $n \in \mathbb{N}^*$  we set  $T_n(s) = \min\{n, \max\{s, -n\}\}$  and  $G_n(s) = s - T_n(s)$ , we consider two sequences  $a_n$  and  $f_n$  such that

$$a_n(x) = T_n(a_0(x)), \tag{3.1}$$

and

$$f_n(x) = T_n(f(x)). \tag{3.2}$$

For  $n \in \mathbb{N}^*$ , the function  $H_n(x, s, \xi)$  is defined by

$$H_n(x, s, \xi) = \frac{H(x, s, \xi)}{1 + \frac{1}{n} |H(x, s, \xi)|}. \tag{3.3}$$

Observe that  $H_n(x, s, \xi)$  satisfies  $|H_n(x, s, \xi)| \leq H(x, s, \xi)$  as well as (2.5).

Since  $a_n(x)$ ,  $f_n(x)$  and  $H_n(x, s, \xi)$  are bounded in  $L^\infty(\Omega)$ , a classical result of J. Leray and J.-L. Lions [20] and [21] asserts that the following approximate problem (3.4) has at least one solution.

$$\begin{cases} u_n \in H_0^1(\Omega), \\ -\operatorname{div}(a(x, u_n, Du_n)) = H_n(x, u_n, Du_n) + \frac{a_n(x)}{(|u_n| + \frac{1}{n})^\theta} + \chi_{\{u_n \neq 0\}} f_n(x) \end{cases} \tag{3.4}$$

Observe that  $u_n$  belongs to  $L^\infty(\Omega)$  for each  $n$  given since  $a_n(x) \in L^\infty(\Omega)$ ,  $f_n(x) \in L^\infty(\Omega)$ , and  $H_n(x, u_n, Du_n) \in L^\infty(\Omega)$ .

Let  $\delta > 0$  be fixed satisfies

$$\begin{aligned} \gamma \leq \delta \quad \text{such that} \\ C_\mu(\theta) \|a_0\|_{N/p} + \|f\|_{N/p} \leq \frac{\alpha}{\mu^{p-1} C_{N,p}^p}, \quad \text{where } \mu = \frac{\delta}{p-1} \end{aligned} \tag{3.5}$$

If we formally define the function  $w_n$  by

$$w_n = \varphi(u_n), \tag{3.6}$$

where

$$\varphi(s) = \mu^{-1}(e^{\mu|s|} - 1) \operatorname{sign}(s), \quad \text{where } \mu = \frac{\delta}{p-1}, \tag{3.7}$$

we have at least formally

$$\begin{aligned} w_n &\in W_0^{1,p}(\Omega) \cap L^\infty(\Omega), \\ e^{\mu u_n} &= 1 + \mu|w_n|, \quad u_n = \frac{1}{\mu} \ln(1 + \mu|w_n|), \quad Dw_n = e^{\mu|u_n|} Du_n, \end{aligned}$$

and

$$\begin{aligned} -e^{\delta|u_n|} \operatorname{div}(a(x, u_n, Du_n)) = \\ -\operatorname{div}(e^{\delta|u_n|} a(x, u_n, Du_n)) + \delta e^{\delta|u_n|} \operatorname{sign}(u_n) (a(x, u_n, Du_n)) Du_n \end{aligned}$$

where  $-e^{\delta|u_n|} \operatorname{div}(a(x, u_n, Du_n))$  is the distribution defined by

$$\mathcal{D}'(\Omega) \left\langle -e^{\delta|u_n|} \operatorname{div}(a(x, u_n, Du_n)), \varphi \right\rangle_{C_0^\infty(\Omega)} = \int_\Omega a(x, u_n, Du_n) D(e^{\delta|u_n|} \varphi)$$

for any  $\varphi \in W_0^{1,p}(\Omega) \cap L^\infty(\Omega)$ .

Since  $e^{\mu|u_n|} = 1 + \mu|w_n|$ , we deduce that  $w_n$  is, at least formally, a solution (see Theorem 2) of the following problem

$$\begin{cases} -\operatorname{div}(\hat{a}(x, w_n, Dw_n)) = K_\delta(x, w_n, Dw_n) \operatorname{sign}(w_n) \\ \quad + (1 + \mu|w_n|)^{p-1} \chi_{\{w_n \neq 0\}} f_n + \frac{(1 + \mu|w_n|)^{p-1}}{(\mu^{-1} \ln(1 + \mu|w_n|) + \frac{1}{n})^\theta} a_n, \\ w_n = 0 \quad \text{on } \partial\Omega, \end{cases} \tag{3.8}$$

where the function  $\hat{a} : \Omega \times \mathbb{R} \times \mathbb{R}^N \rightarrow \mathbb{R}^N$  is a Carathéodory function defined by

$$\hat{a}(x, s, \xi) = (1 + \mu|s|)^{p-1} a \left( x, \frac{1}{\mu} \ln(1 + \mu|s|) \operatorname{sign}(s), \frac{\xi}{1 + \mu|s|} \right). \tag{3.9}$$

(Note that the function  $\hat{a}$  satisfies Leray-Lions conditions (2.3)),

and where the function  $K_\delta : \Omega \times \mathbb{R} \times \mathbb{R}^N \rightarrow \mathbb{R}$  is defined by the following formulas

$$\begin{aligned} K_\delta(x, s, \xi) &= (1 + \mu|s|)^{p-1} \left( H_n \left( x, \frac{1}{\mu} \ln(1 + \mu|s|) \operatorname{sign}(s), \frac{\xi}{1 + \mu|s|} \right) \operatorname{sign}(s) \right. \\ &\quad \left. - \delta a \left( x, \frac{1}{\mu} \ln(1 + \mu|s|) \operatorname{sign}(s), \frac{\xi}{1 + \mu|s|} \right) \frac{\xi}{1 + \mu|s|} \right). \end{aligned} \tag{3.10}$$



Note also that the functions  $K_\delta(x, w, Dw)$  and  $K_\delta(x, w, Dw) \text{sign}(w)$  are correctly defined and are measurable functions when  $w \in W^{1,p}(\Omega)$  (see Remark 3.2 in [18]). When  $\gamma \leq \delta$ , this computation in particular implies that

$$K_\delta(x, s, \xi) \leq 0 \quad \text{a.e. } x \in \Omega, \quad \forall s \in \mathbb{R}, \quad \forall \xi \in \mathbb{R}^N. \quad (3.11)$$

From (2.3) and (2.5) one has

$$\begin{aligned} |K_\delta(x, s, \xi)| &\leq \\ &(c_0 + \delta)(1 + \mu|s|)^{p-1} a \left( x, \frac{1}{\mu} \ln(1 + \mu|s|) \text{sign}(s), \frac{\xi}{1 + \mu|s|} \right) \frac{\xi}{1 + \mu|s|}, \end{aligned} \quad (3.12)$$

a.e.  $x \in \Omega$ ,  $\forall s \in \mathbb{R}$ ,  $\forall \xi \in \mathbb{R}^N$ .

**Step 2: A priori estimate**

Since that the right hand side of (3.8) belongs to  $L^1(\Omega)$ , we would like to use  $w_n$  as a test function in (3.8) and  $K_\delta(x, s, \xi) \leq 0$  (see (3.11)), we have

$$\begin{aligned} &\int_{\Omega} \hat{a}(x, w_n, Dw_n) Dw_n dx \\ &\leq \int_{\Omega} (1 + \mu|w_n|)^{p-1} w_n \chi_{\{w_n \neq 0\}} f_n(x) dx \\ &+ \int_{\Omega} \frac{(1 + \mu|w_n|)^{p-1} w_n}{(\mu^{-1} \ln(1 + \mu|w_n|) + \frac{1}{n})^\theta} a_n(x) dx. \end{aligned} \quad (3.13)$$

By the coercivity condition on  $\hat{a}$  and  $|\chi_{\{w_n \neq 0\}}| \leq 1$ , we get

$$\begin{aligned} \alpha \|Dw_n\|_p^p &\leq \int_{\Omega} (1 + \mu|w_n|)^{p-1} |w_n| |f_n(x)| dx \\ &+ \int_{\Omega} \frac{(1 + \mu|w_n|)^{p-1} w_n}{(\mu^{-1} \ln(1 + \mu|w_n|) + \frac{1}{n})^\theta} a_n(x) dx. \end{aligned} \quad (3.14)$$

Using Hölder's and Sobolev's inequalities (2.10) this implies that

$$\int_{\Omega} (1 + \mu|w_n|)^{p-1} w_n f_n(x) dx \leq \|f\|_{N/p} \|w_n\|_{p^*} \|(1 + \mu|w_n|)\|_{p^*}^{p-1}. \quad (3.15)$$

Now we split  $\Omega$  into  $\Omega = \{|w_n| \leq 1\} \cup \{|w_n| > 1\}$  and writing the last term of the right-hand side of (3.13) as

$$\begin{aligned} &\int_{\Omega} \frac{(1 + \mu|w_n|)^{p-1} w_n}{(\mu^{-1} \ln(1 + \mu|w_n|) + \frac{1}{n})^\theta} a_n(x) dx = \\ &\int_{\{|w_n| \leq 1\}} \frac{(1 + \mu|w_n|)^{p-1} w_n}{(\mu^{-1} \ln(1 + \mu|w_n|) + \frac{1}{n})^\theta} a_n(x) dx \\ &+ \int_{\{|w_n| > 1\}} \frac{(1 + \mu|w_n|)^{p-1} w_n}{(\mu^{-1} \ln(1 + \mu|w_n|) + \frac{1}{n})^\theta} a_n(x) dx, \end{aligned} \quad (3.16)$$

we need  $\|a_n\|_{N/p} \leq \|a_0\|_{N/p}$  and  $\|f_n\|_{N/p} \leq \|f\|_{N/p}$  and since the function  $F(x) = \frac{x}{\ln(1+x)}$  is increasing on  $\mathbb{R}_+^*$ , we get

$$\begin{aligned} &\int_{\{|w_n| \leq 1\}} \frac{(1 + \mu|w_n|)^{p-1} w_n}{(\mu^{-1} \ln(1 + \mu|w_n|) + \frac{1}{n})^\theta} a_n(x) dx \\ &\leq C_\mu(\theta) |\Omega|^{\frac{\theta}{p^*}} \|a_0\|_{N/p} \|w_n\|_{p^*}^{1-\theta} \|(1 + \mu|w_n|)\|_{p^*}^{p-1}, \end{aligned} \quad (3.17)$$

where  $C_\mu(\theta)$  is the positive constant defined in (2.13) and

$$\int_{\{|w_n|>1\}} \frac{(1 + \mu|w_n|)^{p-1} w_n}{(\mu^{-1} \ln(1 + \mu|w_n|) + \frac{1}{n})^\theta} a_n(x) dx \leq C_\mu(\theta) \|a_0\|_{N/p} \|w_n\|_{p^*} \|(1 + \mu|w_n|)\|_{p^*}^{p-1}. \tag{3.18}$$

From (3.15), (3.16), (3.17) and (3.18), we have

$$\alpha \|Dw_n\|_p^p \leq C_\mu(\theta) |\Omega|^{\frac{\theta}{p^*}} \|a_0\|_{N/p} \|w_n\|_{p^*}^{1-\theta} \|(1 + \mu|w_n|)\|_{p^*}^{p-1} + (C_\mu(\theta) \|a_0\|_{N/p} + \|f\|_{N/p}) \|w_n\|_{p^*} \|(1 + \mu|w_n|)\|_{p^*}^{p-1}. \tag{3.19}$$

Using that

$$\|(1 + \mu|w_n|)\|_{p^*} \leq |\Omega|^{\frac{1}{p^*}} + \mu \|w_n\|_{p^*} \leq |\Omega|^{\frac{1}{p^*}} + \mu C_{N,p} \|Dw_n\|_p, \tag{3.20}$$

from (3.19) and (3.20), we have

$$\alpha \|Dw_n\|_p^p \leq C_{N,p}^{1-\theta} C_\mu(\theta) |\Omega|^{\frac{\theta}{p^*}} \|a_0\|_{N/p} \|Dw_n\|_p^{1-\theta} (|\Omega|^{\frac{1}{p^*}} + \mu C_{N,p} \|Dw_n\|_p)^{p-1} + C_{N,p} (C_\mu(\theta) \|a_0\|_{N/p} + \|f\|_{N/p}) \|Dw_n\|_p (|\Omega|^{\frac{1}{p^*}} + \mu C_{N,p} \|Dw_n\|_p)^{p-1}. \tag{3.21}$$

To treat the a priori estimation, we have two cases to study

**Case 1:  $1 < p \leq 2$**

Observe that  $0 < \alpha = p - 1 \leq 1$  and for every  $a, b > 0$ , one has

$$(a + b)^\alpha \leq a^\alpha + b^\alpha. \tag{3.22}$$

From (3.21), (3.22) and dividing by  $\|Dw_n\|_p^{1-\theta}$  (note that the result remains true in the case when  $\|Dw_n\|_p = 0$ ), we have

$$\begin{aligned} & \left( \alpha - \mu^{p-1} C_{N,p}^p (C_\mu(\theta) \|a_0\|_{N/p} + \|f\|_{N/p}) \right) \|Dw_n\|_p^{p-1+\theta} \leq \\ & \mu^{p-1} C_{N,p}^{p-\theta} C_\mu(\theta) |\Omega|^{\frac{\theta}{p^*}} \|a_0\|_{N/p} \|Dw_n\|_p^{p-1} \\ & + C_{N,p} |\Omega|^{\frac{p-1}{p^*}} \left( C_\mu(\theta) \|a_0\|_{N/p} + \|f\|_{N/p} \right) \|Dw_n\|_p^\theta \\ & + C_{N,p}^{1-\theta} C_\mu(\theta) |\Omega|^{\frac{p-1+\theta}{p^*}} \|a_0\|_{N/p}. \end{aligned} \tag{3.23}$$

**Case 2:  $p > 2$**

From (3.21) and dividing by  $\|Dw_n\|_p^{\frac{1-\theta}{p-1}}$ , we have

$$\begin{aligned} & \left( \alpha^{\frac{1}{p-1}} - \mu C_{N,p}^{\frac{p}{p-1}} (C_\mu(\theta) \|a_0\|_{N/p} + \|f\|_{N/p})^{\frac{1}{p-1}} \right) \|Dw_n\|_p^{\frac{p-1+\theta}{p-1}} \leq \\ & \mu C_{N,p}^{\frac{p-\theta}{p-1}} C_\mu^{\frac{1}{p-1}}(\theta) |\Omega|^{\frac{\theta}{(p-1)p^*}} \|a_0\|_{N/p}^{\frac{1}{p-1}} \|Dw_n\|_p \\ & + C_{N,p}^{\frac{1}{p-1}} |\Omega|^{\frac{1}{p^*}} (C_\mu(\theta) \|a_0\|_{N/p} + \|f\|_{N/p})^{\frac{1}{p-1}} \|Dw_n\|_p^{\frac{\theta}{p-1}} \\ & + C_{N,p}^{\frac{1-\theta}{p-1}} C_\mu^{\frac{1}{p-1}}(\theta) |\Omega|^{\frac{p-1+\theta}{p^*}} \|a_0\|_{N/p}^{\frac{1}{p-1}}. \end{aligned} \tag{3.24}$$

Given the definition of (4.1) below of the function  $\Phi_\delta$  (see also Figure 1), we have proved if  $w_n$  is any solution of (3.8), one has

$$\Phi_\delta(\|Dw_n\|_p) \leq 0, \quad \text{if } \gamma \leq \delta,$$

this implies that

$$\|Dw_n\|_p \leq Z_\delta, \quad (\text{does not depend to } n), \quad \text{for } \gamma \leq \delta, \quad (3.25)$$

where the constant  $Z_\delta > 0$  satisfies

$$\Phi_\delta(Z_\delta) = 0. \quad (3.26)$$

Since  $u_n = \mu^{-1}(\ln(1 + \mu|w_n|)) \text{sign}(w_n)$ , (3.25) implies that

$$u_n \text{ is bounded in } H_0^1(\Omega). \quad (3.27)$$

**Step 3: Proof of regularity result of (2.12)**

Extracting a subsequence, still denoted by  $u_n$ , we have, for some  $u \in H_0^1(\Omega)$  and  $w \in H_0^1(\Omega)$

$$\begin{aligned} u_n &\rightharpoonup u \quad \text{weakly in } H_0^1(\Omega), \quad \text{a.e. in } \Omega, \\ w_n &\rightharpoonup w \quad \text{weakly in } H_0^1(\Omega), \quad \text{a.e. in } \Omega, \end{aligned} \quad (3.28)$$

where

$$w = \varphi(u) = \mu^{-1}(e^{\mu|u|} - 1) \text{sign}(u).$$

Observe that  $u$  and  $w$  do not belong to  $L^\infty(\Omega)$  in general.

Let us consider another  $\delta$ , say  $\delta'$ , which also satisfies

$$\gamma \leq \delta' \quad \text{such that} \quad C_{\mu'}(\theta) \|a_0\|_{N/p} + \|f\|_{N/p} \leq \frac{\alpha}{\mu'^{p-1} C_{N,p}^p}, \quad (3.29)$$

where  $\mu' = \frac{\delta'}{p-1}$ .

The above a priori estimate (3.25) again shows that  $w'_n$  defined by

$$w'_n = \mu'^{-1}(e^{\mu'|u_n|} - 1) \text{sign}(u_n),$$

is bounded in  $W_0^{1,p}(\Omega)$ , this proves that  $u$  is such that

$$(e^{\mu'|u|} - 1) \text{sign}(u) \in W_0^{1,p}(\Omega), \quad \forall \delta' \text{ such that } \gamma \leq \delta' \text{ satisfies (3.29),}$$

that is (2.12).

**Step 4: An estimate for  $\int_{|w_n|>k} |Dw_n|^p$**

Since  $G_k(w_n) \in W_0^{1,p}(\Omega) \cap L^\infty(\Omega)$ , the use of  $G_k(w_n)$  as test function in (3.8) is licit. This gives

$$\left\{ \begin{aligned} &\int_{\Omega} \hat{a}(x, w_n, Dw_n) DG_k(w_n) dx - \int_{\Omega} K_\delta(x, w_n, Dw_n) \text{sign}(w_n) G_k(w_n) dx \\ &= \int_{\Omega} \frac{(1 + \mu|w_n|)^{p-1} G_k(w_n)}{(\mu^{-1} \ln(1 + \mu|w_n|) + \frac{1}{n})^\theta} a_n(x) dx \\ &+ \int_{\Omega} (1 + \mu|w_n|)^{p-1} G_k(w_n) \chi_{\{w_n \neq 0\}} f_n(x) dx. \end{aligned} \right. \quad (3.30)$$

Using the coercivity (2.3) of the function  $\hat{a}$ ,  $\text{sign}(s) G_k(s) \geq 0$  and  $K_\delta(x, s, \xi) \leq 0$ , we have

$$\begin{aligned} &\alpha \lim_n \int_{\Omega} |DG_k(u_n)|^p dx \\ &\leq \int_{\Omega} \frac{(1 + \mu|w|)^{p-1} G_k(w)}{(\mu^{-1} \ln(1 + \mu|w_n|))^\theta} a_0 dx + \int_{\Omega} (1 + \mu|w|)^{p-1} G_k(w) \chi_{\{w \neq 0\}} f dx, \end{aligned}$$

from which we deduce that

$$\limsup_n \int_{\Omega} |DG_k(u_n)|^p dx \rightarrow 0 \quad \text{as } k \rightarrow +\infty \quad (3.31)$$

**Step 5:** Strong convergence of  $DT_k(w_n)$  in  $(L^p(\Omega))^N$

In this step, we will fix  $k > 0$  and prove that

$$DT_k(w_n) \rightarrow DT_k(w) \text{ strongly in } (L^p(\Omega))^N, \text{ as } n \rightarrow +\infty. \tag{3.32}$$

In order to prove this result we use a technique which goes to Bensoussan et al. [5], let  $k$  be fixed, we define

$$z_n = T_k(w_n) - T_k(w), \tag{3.33}$$

and we choose an increasing,  $C^1$  function  $\psi : \mathbb{R} \rightarrow \mathbb{R}$  such that

$$\psi(0) = 0, \quad \psi'(s) - (c_0 + \delta)|\psi(s)| \geq 1/2, \quad \forall s \in \mathbb{R}, \tag{3.34}$$

where  $c_0$  is the constant which appears in the left-hand side of assumption (2.5) on  $H$  and we get for example  $\psi(s) = se^{\lambda s^2}$  with  $\lambda = (c_0 + \delta)^2/4$ .

Since  $z_n \in W_0^{1,p}(\Omega) \cap L^\infty(\Omega)$ , and since  $\psi(0) = 0$ , the function  $\psi(z_n)$  belongs to  $W_0^{1,p}(\Omega) \cap L^\infty(\Omega)$ . The use of  $\psi(z_n)$  as test function in (3.8) is licit. This gives

$$\left\{ \begin{aligned} & \int_{\Omega} \hat{a}(x, w_n, Dw_n) Dz_n \psi'(z_n) dx - \int_{\Omega} K_{\delta}(x, w_n, Dw_n) \text{sign}(w_n) \psi(z_n) dx \\ &= \int_{\Omega} \frac{(1 + \mu|w_n|)^{p-1} \psi(z_n)}{\left(\frac{1}{n} + \mu^{-1} \ln(1 + \mu|w_n|)\right)^{\theta}} a_n(x) dx \\ &+ \int_{\Omega} (1 + \mu|w_n|)^{p-1} \psi(z_n) \chi_{\{w_n \neq 0\}} f_n(x) dx. \end{aligned} \right. \tag{3.35}$$

Since

$$Dw_n = DT_k(w_n) + DG_k(w_n) = Dz_n + DT_k(w) + DG_k(w_n). \tag{3.36}$$

Splitting  $\Omega$  into  $\Omega = \{|w_n| \leq k\} \cup \{|w_n| > k\}$ , the first term of the left-hand side of (3.35) reads as

$$\left\{ \begin{aligned} & \int_{\Omega} \hat{a}(x, w_n, Dw_n) Dz_n \psi'(z_n) dx \\ &= \int_{\{|w_n| \leq k\}} (\hat{a}(x, T_k w_n, DT_k(w_n)) - \hat{a}(x, T_k w_n, DT_k(w))) Dz_n \psi'(z_n) dx \\ &+ \int_{\{|w_n| \leq k\}} \hat{a}(x, T_k w_n, DT_k(w)) Dz_n \psi'(z_n) dx \\ &+ \int_{\{|w_n| > k\}} \hat{a}(x, w_n, Dw_n) Dz_n \psi'(z_n) dx. \end{aligned} \right. \tag{3.37}$$

On the other hand the second term of the left-hand side of (3.35) reads as

$$\left\{ \begin{aligned} & \int_{\Omega} K_{\delta}(x, w_n, Dw_n) \text{sign}(w_n) \psi(z_n) dx = \\ & \int_{\{|w_n| > k\}} K_{\delta}(x, w_n, Dw_n) \text{sign}(w_n) \psi(z_n) dx \\ & + \int_{\{|w_n| \leq k\}} K_{\delta}(x, w_n, Dw_n) \text{sign}(w_n) \psi(z_n) dx, \end{aligned} \right. \tag{3.38}$$

the first term of the right-hand side of (3.38), we claim that

$$\int_{\{|w_n| > k\}} K_{\delta}(x, w_n, Dw_n) \text{sign}(w_n) \psi(z_n) dx \leq 0, \tag{3.39}$$

indeed in  $\{|w_n| > k\}$ , the integrand is negative since on the first hand the function  $K_\delta(x, w_n, Dw_n) \leq 0$  in view of (3.11) and  $\delta \geq \gamma$ , and since on the other hand one has

$$\text{sign}(w_n) \psi(z_n) \geq 0 \quad \text{in } \{|w_n| > k\}, \quad (3.40)$$

indeed in  $\{|w_n| > k\}$ , one has  $z_n = T_k(w_n) - T_k(w) = k \text{sign}(w_n) - T_k(w)$ , and therefore  $\text{sign}(z_n) = \text{sign}(w_n)$ ; this implies

$$\text{sign}(w_n) \psi(z_n) = \text{sign}(z_n) \psi(z_n) = |\psi(z_n)| \quad \text{in } \{|w_n| > k\}, \quad (3.41)$$

which proves (3.39).

The second term of the right-hand side of (3.38), in view of (Remark ??), (3.9) and  $\delta \geq \gamma$ , we obtain

$$|K_\delta(x, w_n, Dw_n) \text{sign}(w_n) \psi(z_n)| \leq (c_0 + \delta) |\psi(z_n)| \hat{a}(x, w_n, Dw_n) Dw_n. \quad (3.42)$$

Since in view of (3.36) one has

$$Dw_n = Dz_n + DT_k(w) \quad \text{in } \{|w_n| \leq k\},$$

and implies that

$$\left\{ \begin{array}{l} \int_{\{|w_k| \leq k\}} K_\delta(x, w_n, Dw_n) \text{sign}(w_n) \psi(z_n) dx \\ \leq \int_{\{|w_n| \leq k\}} (c_0 + \delta) |\psi(z_n)| (\hat{a}(x, T_k w_n, DT_k(w_n)) - \hat{a}(x, T_k w_n, DT_k(w))) Dz_n dx \\ + \int_{\{|w_n| \leq k\}} (c_0 + \delta) |\psi(z_n)| \hat{a}(x, T_k w_n, DT_k(w_n)) DT_k(w) dx \\ + \int_{\{|w_n| \leq k\}} (c_0 + \delta) |\psi(z_n)| \hat{a}(x, T_k w_n, DT_k(w)) Dz_n dx. \end{array} \right. \quad (3.43)$$

From (3.34), (3.35), (3.37), (3.38) and (3.43), we deduce that

$$\left\{ \begin{array}{l} \frac{1}{2} \int_{\{|w_n| \leq k\}} (\hat{a}(x, T_k w_n, DT_k(w_n)) - \hat{a}(x, T_k w_n, DT_k(w))) Dz_n dx \\ \leq - \int_{|w_n| \leq k} \hat{a}(x, T_k w_n, DT_k(w)) Dz_n \psi'(z_n) dx. \\ - \int_{|w_n| \geq k} \hat{a}(x, w_n, Dw) Dz_n \psi'(z_n) dx \\ + \int_{\{|w_n| \leq k\}} (c_0 + \delta) |\psi(z_n)| \hat{a}(x, T_k w_n, DT_k(w_n)) DT_k(w) dx \\ + \int_{\{|w_n| \leq k\}} (c_0 + \delta) |\psi(z_n)| \hat{a}(x, T_k w_n, DT_k(w)) Dz_n dx \\ + \int_{\{|w_n| > k\}} K_\delta(x, w_n, Dw_n) \text{sign}(w_n) \psi(z_n) dx \\ + \int_{\Omega} \frac{(1 + \mu|w_n|)^{p-1} a_n(x)}{(\frac{1}{n} + \mu^{-1} \ln(1 + \mu|w_n|))^\theta} \psi(z_n) dx \\ + \int_{\Omega} (1 + \mu|w_n|)^{p-1} \chi_{\{w_n \neq 0\}} f_n(x) \psi(z_n) dx. \end{array} \right. \quad (3.44)$$

We claim that each term of the right-hand side of (3.44) tends to zero as  $n$  tends to infinity.

Since  $\psi'(z_n) - (c_0 + \delta)|\psi(z_n)| \geq 1/2$  by (3.34), and since the function  $\hat{a}$  is monotone and coercive (see (2.3)), this will imply that

$$z_n \rightharpoonup 0 \text{ in } H_0^1(\Omega) \text{ strongly,}$$

or in the other terms (see the definition (3.33) of  $z_n$ ) that

$$T_k(w_n) \rightharpoonup T_k(w) \text{ in } W_0^{1,p}(\Omega) \text{ strongly,}$$

In order to prove the claim let us recall that in view of (3.28) and of the definition (3.33) of  $z_n$  one has

$$z_n \rightharpoonup 0 \text{ in } W_0^{1,p}(\Omega) \text{ weakly, } L^\infty(\Omega) \text{ weakly star and a.e. in } \Omega.$$

Since  $\psi(0) = 0$ , this implies that  $\psi(z_n)$  tends to zero almost everywhere in  $\Omega$  and in  $L^\infty(\Omega)$  weakly star as  $n$  tends to infinity, which in turn implies that

$$Dz_n \psi'(z_n) = D\psi(z_n) \rightharpoonup 0 \text{ in } (L^p(\Omega))^N \text{ weakly as } n \rightarrow +\infty.$$

This implies that the first term of the right-hand side of (3.44) tends to zero as  $k$  tends to infinity.

Indeed  $z_n$  (and thus  $\psi'(z_n)$ ) is bounded in  $L^\infty(\Omega)$  and

$$Dz_n = DT_k(w_n) - DT_k(w) \text{ tends to zero weakly in } (L^p(\Omega))^N,$$

and using Vitali's theorem, we have  $\chi_{\{|w_n| \leq k\}} \hat{a}(x, T_k w_n, DT_k(w)) \psi'(z_n)$  tends strongly to  $\chi_{\{|w| \leq k\}} \hat{a}(x, T_k w, DT_k(w)) \psi'(0)$  in  $(L^{p'}(\Omega))^N$ .

For the second term of the right-hand side of (3.44), we observe that

$$\chi_{\{|w_n| > k\}} Dz_n = -\chi_{\{|w_n| > k\}} DT_k(w) \rightarrow 0 \text{ strongly in } (L^p(\Omega))^N,$$

as  $\psi'(z_n)$  is bounded in  $L^\infty(\Omega)$  and from (2.3) the fact  $\hat{a}(x, w_n, Dw) \psi'(z_n)$  is bounded in  $(L^{p'}(\Omega))^N$ .

This implies that the second term of the right-hand side of (3.44) tends to zero.

For the third term of the right-hand side of (3.44) tends to zero, since  $DT_k(w) \psi(z_n)$  converges strongly to  $DT_k(w) \psi(0) = 0$  in  $(L^p(\Omega))^N$ , while  $\hat{a}(x, T_k(w_n), DT_k(w_n))$  is bounded in  $(L^{p'}(\Omega))^N$ .

For the fourth term of the right-hand side of (3.44) tends to zero, since  $Dz_n = DT_k(w_n) - DT_k(w)$  converges to zero weakly in  $(L^p(\Omega))^N$ , while by Vitali's theorem and  $\psi(0) = 0$ ,  $\chi_{\{|w_n| \leq k\}} \hat{a}(x, T_k(w_n), DT_k(w)) |\psi(z_n)|$  converges strongly to zero in  $(L^{p'}(\Omega))^N$ .

Together with condition (3.39), this implies that the fifth term of the right-hand side of (3.44) is negative.

For the sixth term of the right-hand side of (3.44), we consider for almost every  $x$  in the set  $\{w = 0\}$  the assertions  $w_n$  and  $\psi(z_n) = \psi(T_k(w_n))$  converge to zero almost everywhere in  $\Omega$  and observe that  $|T_k(w_n)| \leq |w_n|$ , thus there exists  $n_0 \in \mathbb{N}$ , such that for all  $n \geq n_0$  implies that  $|w_n| \leq 1$ , and

$$\frac{(1 + \mu|w_n|)^{p-1} \psi(z_n)}{(\mu^{-1} \ln(1 + \mu|w_n|) + \frac{1}{n})^\theta} a_n(x) \leq (1 + \mu)^{p-1} C_\mu(\theta) e^\lambda a_0(x).$$

By Lebesgue's theorem, this implies that

$$\frac{(1 + \mu|w_n|)^{p-1} \psi(z_n)}{(\mu^{-1} \ln(1 + \mu|w_n|) + \frac{1}{n})^\theta} a_n(x) \text{ converges to zero in } L^1(\{w = 0\}). \tag{3.45}$$

On the other hand, we consider for almost every  $x$  in the set  $\{w \neq 0\} \cap \{|w| \leq 1\}$ , since  $z_n$  converges almost everywhere to zero, then there exists  $n_1 \in \mathbb{N}$ , such that for all  $n \geq n_1$  implies that

$$|z_n| = |T_k(w_n) - T_k(w)| \leq \frac{|w|}{2} \quad \text{and} \quad |w_n| \geq \frac{|w|}{2}$$

and

$$\frac{(1 + \mu|w_n|)^{p-1} \psi(z_n)}{(\mu^{-1} \ln(1 + \mu|w_n|) + \frac{1}{n})^\theta} a_n(x) \leq (1 + \mu)^{p-1} C_\mu(\theta) e^\lambda a_0(x).$$

By Lebesgue's theorem, this implies that

$$\frac{(1 + \mu|w_n|)^{p-1} \psi(z_n)}{(\mu^{-1} \ln(1 + \mu|w_n|) + \frac{1}{n})^\theta} a_n(x) \xrightarrow[n]{n} 0 \text{ in } L^1(\{w \neq 0\} \cap \{|w| \leq 1\}). \quad (3.46)$$

Finally, we consider for almost every  $x$  in the set  $\{|w| > 1\}$ , since  $z_n$  converges almost everywhere to zero and  $\psi(0) = 0$  and by Vitali's theorem, then

$$\frac{(1 + \mu|w_n|)^{p-1} \psi(z_n)}{(\mu^{-1} \ln(1 + \mu|w_n|) + \frac{1}{n})^\theta} a_n(x) \xrightarrow[n]{n} 0 \text{ in } L^1(\{|w_n| > 1\}). \quad (3.47)$$

Collecting the results on (3.45), (3.46) and (3.47) implies that for  $k$  fixed:

$$\frac{(1 + \mu|w_n|)^{p-1} \psi(z_n)}{(\mu^{-1} \ln(1 + \mu|w_n|) + \frac{1}{n})^\theta} a_n(x) \xrightarrow[n]{n} 0 \text{ in } L^1(\Omega).$$

For the seventh term of the right-hand side of (3.44) tends to zero, indeed by Vitali's theorem, the strong convergence (3.2) in  $L^{N/p}(\Omega)$  of  $f_n$ , the  $L^{p^*}(\Omega)$  bound on  $w_n$  and  $\psi(0) = 0$  imply that

$$(1 + \mu|w_n|)^{p-1} \chi_{\{w_n \neq 0\}} f_n(x) \psi(z_n) \xrightarrow[n]{n} 0 \text{ strongly in } L^1(\Omega).$$

Passing to the limit in (3.44), we get

$$\int_{\{|w_n| \leq k\}} (\hat{a}(x, T_k w_n, DT_k(w_n)) - \hat{a}(x, T_k w_n, DT_k(w))) D z_n dx \xrightarrow[n]{n} 0. \quad (3.48)$$

By the growth condition of (2.3) on  $a$  (thus on  $\hat{a}$ ), and by Vitali's theorem, we have

$$\int_{\{|w_n| > k\}} (\hat{a}(x, T_k w_n, DT_k(w_n)) - \hat{a}(x, T_k w_n, DT_k(w))) D z_n \xrightarrow[n]{n} 0 \quad (3.49)$$

Combining (3.39) and (3.49), we have

$$\int_{\Omega} (\hat{a}(x, T_k w_n, DT_k(w_n)) - \hat{a}(x, T_k w_n, DT_k(w))) D z_n dx \xrightarrow[n]{n} 0. \quad (3.50)$$

Thanks to the assumption (2.3) and by a result of Browder, we deduce

$$z_n = T_k(w_n) - T_k(w) \rightarrow 0 \text{ strongly in } W_0^{1,p}(\Omega). \quad (3.51)$$

**Step 6:** Strong convergence of  $u_n$  in  $W_0^{1,p}(\Omega)$

Taking into account

$$Dw_n - Dw = (DT_k(w_n) - DT_k(w)) + (DG_k(w_n) - DG_k(w)),$$

from (3.31) and (3.51), we have

$$Dw_n \rightarrow Dw \quad \text{strongly in } (L^p(\Omega))^N,$$

since we have

$$u_n = \mu^{-1} \ln(1 + \mu|w_n|),$$

it follows that

$$u_n \rightarrow u \quad \text{strongly in } W_0^{1,p}(\Omega).$$

**Step 7:** Control of strong  $\int_{\{|u_n| \leq \nu\}} \frac{a_n(x)}{(|u_n| + \frac{1}{n})^\theta} \varphi dx$  when  $\nu$  is small

In this step, we claim that

$$\lim_n \int_\Omega \frac{a_n(x)}{(|u_n| + \frac{1}{n})^\theta} \varphi dx = \int_\Omega \frac{a_0(x)}{|u|^\theta} \varphi dx, \quad \forall \varphi \in W_0^{1,p}(\Omega) \cap L^\infty(\Omega).$$

First we observe that

$$\begin{aligned} \int_\Omega \frac{a_n(x)}{(|u_n| + \frac{1}{n})^\theta} \varphi dx &= \int_\Omega a(x, u_n, Du_n) D\varphi dx \\ &\quad - \int_\Omega H_n(x, u_n, Du_n) \varphi dx - \int_\Omega (\chi_{\{|u_n| \neq 0\}} f_n)(x) \varphi dx. \end{aligned} \tag{3.52}$$

Taking into account the growth conditions (2.3) and Hölder's inequality, we get

$$\begin{aligned} \int_\Omega \frac{a_n(x)}{(|u_n| + \frac{1}{n})^\theta} \varphi dx &\leq \\ &\beta \|b\|_{N/(p-1)} |\Omega|^{\frac{N-p+1}{N}} \|\varphi\|_\infty + \beta \|\varphi\|_p (|u_n|_p^{p-1} + \|Du_n\|_p^{p-1}) \\ &\quad + (c_0 + \delta) \|\varphi\|_\infty \|Du_n\|_p^p + \beta \|\varphi\|_\infty \|f_n\|_{N/p} |\Omega|^{\frac{N-p}{p}} \end{aligned} \tag{3.53}$$

From now on, we consider a nonnegative  $\varphi \in W_0^{1,p}(\Omega) \cap L^\infty(\Omega)$ , applying Fatou's Lemma to the left-hand side of (3.53), we have.

$$\int_\Omega \frac{a_0(x)}{|u|^\theta} \varphi dx \leq C_\varphi, \tag{3.54}$$

where  $C_\varphi$  is a positive constant and does not depend to  $n$ . Hence  $0 \leq \frac{a_0(x)}{|u|^\theta} \varphi \in L^1(\Omega)$ , for any nonnegative  $\varphi \in W_0^{1,p}(\Omega) \cap L^\infty(\Omega)$ .

As consequence,  $\frac{1}{|s|^\theta}$  is unbounded as  $s$  tends to 0, we deduce that

$$\{u = 0\} \subset \{a_0 = 0\},$$

up to set of zero Lebesgue measure.

From now on, we consider a nonnegative function  $\varphi \in W_0^{1,p}(\Omega) \cap L^\infty(\Omega)$ , and choising it was test function in the weak formulation, we have

$$\begin{aligned} \int_\Omega a(x, u_n, Du_n) D\varphi dx &= \int_\Omega H_n(x, u_n, Du_n) \varphi dx \\ &\quad + \int_\Omega \frac{a_n(x)}{(|u_n| + \frac{1}{n})^\theta} \varphi dx + \int_\Omega (\chi_{\{u_n \neq 0\}} f_n)(x) \varphi dx, \end{aligned} \tag{3.55}$$



we want to pass to the limit in the second right-hand side of (3.55) as  $n$  tends to infinity.

For  $\nu > 0$  fixed, we consider the second right-hand side of (3.55)

$$\int_{\Omega} \frac{a_n(x)}{(|u_n| + \frac{1}{n})^\theta} \varphi dx = \int_{|u_n| \leq \nu} \frac{a_n(x)}{(|u_n| + \frac{1}{n})^\theta} \varphi dx + \int_{|u_n| > \nu} \frac{a_n(x)}{(|u_n| + \frac{1}{n})^\theta} \varphi dx \quad (3.56)$$

Applying Lemma 1.1 of [24], we have that for  $\nu > 0$ ,  $V_\nu(u_n)$  belongs to  $W_0^{1,p}(\Omega)$ , where  $V_\nu : ]-\infty, +\infty[ \rightarrow ]0, +\infty[$  is defined by

$$V_\nu(s) = \begin{cases} 0 & s < -2\nu \\ 2 + \frac{s}{\nu} & -2\nu \leq s < -\nu \\ 1 & -\nu \leq s \leq \nu \\ 2 - \frac{s}{\nu} & \nu < s < 2\nu \\ 0 & s \geq 2\nu. \end{cases}$$

Since  $V_\nu(u_n) \in W_0^{1,p}(\Omega)$ , the use of  $(V_\nu(u_n) \varphi)$  as test function in (3.4) is licit. This gives

$$\begin{aligned} \int_{|u_n| \leq \nu} \frac{a_n(x)}{(|u_n| + \frac{1}{n})^\theta} \varphi dx &\leq \int_{\Omega} a(x, u_n, Du_n) D(V_\nu(u_n) \varphi) dx \\ &- \int_{\Omega} H_n(x, u_n, Du_n) V_\nu(u_n) \varphi dx - \int_{\Omega} (\chi_{\{u_n \neq 0\}} f_n)(x) V_\nu(u_n) \varphi dx \end{aligned} \quad (3.57)$$

The first term of the right-hand side of (3.57) can be written

$$\int_{\Omega} a(x, u_n, Du_n) D(V_\nu(u_n) \varphi) dx = \int_{\Omega} a(x, u_n, Du_n) D\varphi V_\nu(u_n) dx. \quad (3.58)$$

Indeed, splitting  $\Omega$  into  $\Omega = \{|u_n| \leq \nu\} \cup \{|u_n| > \nu\}$  and using (2.4), we get

$$\int_{\Omega} a(x, u_n, Du_n) Du_n V'_\nu(u_n) \varphi dx = 0 \quad (3.59)$$

Since  $V_\nu(u_n) D\varphi$  converges to  $V_\nu(u) D\varphi$  strongly in  $L^p(\Omega)^N$ , as  $n$  tends to infinity, while the Carathéodory function  $a(x, u_n, Du_n)$  converges to  $a(x, u, Du)$  strongly in  $L^p(\Omega)^N$ , we obtain

$$\lim_n \int_{\Omega} a(x, u_n, Du_n) D\varphi V_\nu(u_n) dx = \int_{\Omega} a(x, u, Du) D\varphi V_\nu(u) dx. \quad (3.60)$$

In the second term of the right-hand side of (3.57), we observe that  $\varphi V_\nu(u_n)$  is bounded in  $L^\infty(\Omega)$  and

$$H_n(u_n, Du_n) \varphi V_\nu(u_n) \leq \|\varphi\|_\infty (c_0 + \gamma) |Du_n|^2,$$

which implies that the functions  $H_n(u_n, Du_n) \varphi V_\nu(u_n)$  are equiintegrable since  $Du_n$  strongly converges to  $Du$  in  $L^p(\Omega)^N$ , we have

$$\lim_n \int_{\Omega} H_n(u_n, Du_n) \varphi V_\nu(u_n) dx = \int_{\Omega} H(u, Du) \varphi V_\nu(u) dx. \quad (3.61)$$

In the third term of the right-hand side of (3.57), the functions  $\chi_{\{u_n \neq 0\}} f_n \varphi V_\nu(u_n)$  are equiintegrable, since  $f_n$  strongly converges in  $L^{N/p}(\Omega)$  and  $V_\nu(u_n)$  converges to  $V_\nu(u)$  strongly in  $L^{p^*}(\Omega)$ . Thus Vitali's theorem implies that

$$\lim_n \int_{\Omega} \chi_{\{u_n \neq 0\}} f_n \varphi V_\nu(u_n) dx = \int_{\Omega} \chi_{\{u \neq 0\}} f \varphi V_\nu(u) dx. \quad (3.62)$$

Together with (3.57), the three limits (3.60), (3.61) and (3.62) imply that

$$\left\{ \begin{aligned} \lim_n \int_{|u_n| \leq \nu} \frac{a_n(x)}{(|u_n| + \frac{1}{n})^\theta} \varphi \, dx &\leq \int_\Omega a(x, u, Du) D\varphi V_\nu(u) \, dx \\ &+ \int_\Omega H(u, Du) \varphi V_\nu(u) \, dx + \int_\Omega \chi_{\{u \neq 0\}} f \varphi V_\nu(u) \, dx \end{aligned} \right. \quad (3.63)$$

Since  $V_\nu(u)$  converges to  $\chi_{\{u=0\}}$  a.e. in  $\Omega$ , as  $\nu \rightarrow 0$  and since  $u \in W_0^{1,p}(\Omega)$ , then

$$(a(x, u, Du) D\varphi + H(u, Du) \varphi + \chi_{\{u \neq 0\}} f \varphi) V_\nu(u) \xrightarrow{\nu \rightarrow 0} 0 \quad \text{a.e. in } \Omega. \quad (3.64)$$

Applying the Lebesgue's dominated convergence Theorem on the right-hand side of (3.63), we obtain that

$$\lim_{\nu \rightarrow 0} \lim_n \int_{\{|u_n| \leq \nu\}} \frac{a_n(x)}{(|u_n| + \frac{1}{n})^\theta} \varphi \, dx = 0. \quad (3.65)$$

Finally, let us pass to limit in  $n$  for  $\nu > 0$  fixed in the second term of the right-hand side of (3.56)

$$\int_{\{|u_n| > \nu\}} \frac{a_n(x)}{(|u_n| + \frac{1}{n})^\theta} \varphi \, dx = \int_\Omega \frac{a_n(x)}{(|u_n| + \frac{1}{n})^\theta} \chi_{\{|u_n| > \nu\}} \varphi \, dx.$$

Observing that we need to choose  $\nu \notin \{ \nu : \text{meas}\{|u(x)| = \nu\} > 0 \}$  which is at most countable set, we have

$$\frac{a_n(x)}{(|u_n| + \frac{1}{n})^\theta} \varphi \rightarrow \frac{a_0(x)}{|u|^\theta} \varphi \quad \text{a.e. on } \Omega,$$

and

$$\frac{a_n(x)}{(|u_n| + \frac{1}{n})^\theta} \varphi \leq \frac{a_0(x)}{|u|^\theta} \varphi \in L^1(\Omega).$$

By Lebesgue's theorem, we have

$$\lim_n \int_{\{|u_n| > \nu\}} \frac{a_n(x)}{(|u_n| + \frac{1}{n})^\theta} \varphi \, dx = \int_{\{|u| > \nu\}} \frac{a_0(x)}{|u|^\theta} \varphi \, dx, \quad \forall \nu \notin \mathcal{C}. \quad (3.66)$$

Moreover it follows by (3.54) that  $\forall \varphi \in W_0^{1,p}(\Omega) \cap L^\infty(\Omega)$ ,  $\varphi \geq 0$

$$\lim_{\nu \rightarrow 0} \lim_n \int_{\{|u_n| > \nu\}} \frac{a_n(x)}{(|u_n| + \frac{1}{n})^\theta} \varphi \, dx = \int_{\{|u| > 0\}} \frac{a_0(x)}{|u|^\theta} \varphi \, dx. \quad (3.67)$$

Moreover, decomposing any  $\varphi = \varphi^+ - \varphi^-$  and observing that (3.66) is linear in  $\varphi$ , we deduce that (3.66) holds for every  $\varphi \in W_0^{1,p}(\Omega) \cap L^\infty(\Omega)$ .

As  $u_n \rightarrow u$  strongly in  $W_0^{1,p}(\Omega)$ , it is then easy to pass to the limit in the approximate equation (3.4). This proves that  $u$  is a solution of (2.1).

The proof of Theorem 1 is then complete.

## 4 Appendix

### 4.1 An equivalence result

**Theorem 2.** [12] Assume that (2.3), (2.5), (2.7), (2.8), (2.9), (3.1), (3.2) and (3.3) hold true, and let  $\delta > 0$  be fixed. Let the function  $K_\delta$  be defined in (3.10).

If  $u_n$  is any solution of (2.1) then the function  $w_n$  defined by (3.6) is solution of (3.8).

Conversely, if  $w_n$  is any solution of (3.8), then the function  $u_n$  is solution of (3.4).

## 4.2 Definition of $Z_\delta$

The goal of this Subsection is to define the constant  $Z_\delta$  (with  $\delta = \mu(p-1)$ ) which appear in Theorem 1. We will prove the following result.

**Lemma 1.** For  $\delta \geq 0$ , let  $\Phi_\delta : \mathbb{R}^+ \rightarrow \mathbb{R}$  (see Figure 1) be the function defined by

$$\Phi_\delta(X) = \begin{cases} \Phi_\delta^{(1)}(X) & 1 < p \leq 2 \\ \Phi_\delta^{(21)}(X) & p > 2, \end{cases} \quad (4.1)$$

where

$$\left\{ \begin{array}{l} \Phi_\delta^{(1)}(X) = \left( \alpha - \mu^{p-1} C_{N,p}^p (C_\mu(\theta) \|a_0\|_{\frac{N}{p}} + \|f\|_{\frac{N}{p}}) \right) X^{p-1+\theta} \\ \quad - \mu^{p-1} C_{N,p}^{p-\theta} C_\mu(\theta) |\Omega|^{\frac{\theta}{p^*}} \|a_0\|_{N/p} X^{p-1} \\ \quad - C_{N,p} |\Omega|^{\frac{p-1}{p^*}} \left( C_\mu(\theta) \|a_0\|_{\frac{N}{p}} + \|f\|_{\frac{N}{p}} \right) X^\theta \\ \quad - C_{N,p}^{1-\theta} C_\mu(\theta) |\Omega|^{\frac{p-1+\theta}{p^*}} \|a_0\|_{N/p}, \end{array} \right. \quad (4.2)$$

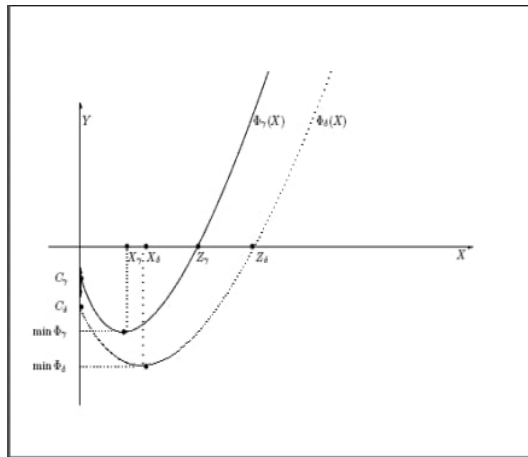
and

$$\left\{ \begin{array}{l} \Phi_\delta^{(2)}(X) = \left( \alpha^{\frac{1}{p-1}} - \mu C_{N,p}^{\frac{p}{p-1}} (C_\mu(\theta) \|a_0\|_{N/p} + \|f\|_{N/p})^{\frac{1}{p-1}} \right) X^{\frac{p-1+\theta}{p-1}} \\ \quad - \mu C_{N,p}^{\frac{p-\theta}{p-1}} C_\mu^{\frac{1}{p-1}}(\theta) |\Omega|^{\frac{\theta}{(p-1)p^*}} \|a_0\|_{N/p}^{\frac{1}{p-1}} X \\ \quad - C_{N,p}^{\frac{1}{p-1}} |\Omega|^{\frac{1}{p^*}} (C_\mu(\theta) \|a_0\|_{N/p} + \|f\|_{N/p})^{\frac{1}{p-1}} X^{\frac{\theta}{p-1}} \\ \quad - C_{N,p}^{\frac{1-\theta}{p-1}} C_\mu^{\frac{1}{p-1}}(\theta) |\Omega|^{\frac{p-1+\theta}{p^*}} \|a_0\|_{N/p}^{\frac{1}{p-1}}, \end{array} \right. \quad (4.3)$$

where  $\theta$  satisfies (2.8), namely  $0 < \theta < 1$ ,  $C_\mu(\theta)$  is the constant satisfies (2.13) and where  $C_{N,p}$  is the best constant in the Sobolev's inequality (2.10).

Then, for  $\delta \geq \gamma$ , there exists a unique number  $Z_\delta$  such that

$$\Phi_\delta(Z_\delta) = 0, \quad \text{and} \quad \forall X \leq Z_\delta : \Phi_\delta(X) \leq 0. \quad (4.4)$$



**Figure 1.** The graphs of the functions  $\Phi_\delta(X)$  and  $\Phi_\gamma(X)$ .

*Proof.* Let us now study the family of functions  $\Phi_\delta(X) : \mathbb{R}^+ \rightarrow \mathbb{R}$  defined by (4.1), from the smallness condition relative to  $\delta$  (see 2.12), implies that

$$\alpha - \mu^{p-1} C_{N,p}^p(C_\mu(\theta)) \|a_0\|_{\frac{N}{p}} + \|f\|_{\frac{N}{p}} \geq 0 \quad \text{for } 1 < p \leq 2,$$

and

$$\alpha^{\frac{1}{p-1}} - \mu C_{N,p}^{\frac{p}{p-1}}(C_\mu(\theta)) \|a_0\|_{N/p} + \|f\|_{N/p}^{\frac{1}{p-1}} \geq 0 \quad \text{for } p > 2.$$

Each function  $\Phi_\delta$  look like the restriction to  $\mathbb{R}^+$  of a “convex parabola”, when  $0 < \gamma \leq \delta$ . This “convex parabola” has a unique minimizer in  $X_\delta$  of the function  $\Phi_\delta$ , and the minimum of  $\Phi_\delta$ , namely  $\Phi_\delta(X_\delta)$  is negative and using the intermediate value theorem, then there exists  $Z_\delta$  such that  $\Phi_\delta(Z_\delta) = 0$ .

**Acknowledgement.** This work was carried out during the author’s visits to the Laboratoire Jacques-Louis Lions, Sorbonne Université Campus Pierre et Marie Curie (Paris VI). The author would like to thank Professor F. Murat for his hospitality.

## References

- [1] B. Abdellaoui, D. Giachetti, I. Peral and M. Walias, *Elliptic problems with nonlinear terms depending on the gradient and singular on the boundary*, Nonlinear Analysis, 74 (2011), 1355–1371.
- [2] B. Abdellaoui, A. Attar, S.E. Miri, *Nonlinear singular elliptic problem with gradient term and general datum*, J. Math. Anal. Appl. 409 (2014), 362-377.
- [3] D. Arcoya, J. Carmona, T. Leonori, P. J. Martinez-Aparicio, L. Orsina and F. Petitta, *Existence and nonexistence of solutions for singular quadratic quasilinear equations*, J. Diff. Equ., 246 (2009), 4006–4042.
- [4] D. Arcoya, L. Boccardo, T. Leonori and A. Porretta, *Some elliptic problems with singular natural growth lower order terms*, J. Diff. Eq., 249 (2010), 2771–2795.
- [5] A. Bensoussan, L. Boccardo, F. Murat, *On a nonlinear partial differential equation having natural growth terms and unbounded solution*, Ann. Inst. H. Poincaré Anal. non linéaire 5 (1988), 347-364.
- [6] L. Boccardo, *Dirichlet problems with singular and gradient quadratic lower order terms*, ESSAIM: Control Optim. Calc. Var. 14 (2008), 411-426.
- [7] L. Boccardo, L. Orsina, *Semilinear elliptic equations singular nonlinearities*, Calc. Var. 37 (2010), 363-380.
- [8] L. Boccardo, G. Croce, *The impact of a lower order term in a Dirichlet problem with a singular nonlinearity*, Portugaliae Mathematica, 76, (2019), 407-415.
- [9] J. Carmona, A.J. Martinez Aparicio, P.J. Martinez Aparicio, M. Martinez-Teruel, *Regularizing effect in singular semilinear problems*, to appear.
- [10] M.G. Crandall, P.H. Rabinowitz, L. Tartar, *On a Dirichlet problem with a singular nonlinearity*, Comm. Part. Diff. Eq., 2 (1977), 193-222.
- [11] R. Durastanti, *Asymptotic behavior and existence of solutions for singular elliptic equations*, Ann. Mat. Pura Appl. 199, (2020), 925-954
- [12] V. Ferone, F. Murat, *Quasilinear problems having quadratic growth in the gradient: an existence result when the source term is small*, in *Equations aux dérivées partielles et applications, Articles dédiés à Jacques-Louis Lions*, (1988), Gauthiers-Villars, Paris, 497-515.

- [13] V. Ferone, F. Murat, *Nonlinear problems having natural growth in the gradient: an existence result when the source terms are small*, *Nonlinear Anal.* 42 (2000), 1309-1326.
- [14] D. Giachetti, F. Petitta and S. Segura De León, *Elliptic equations having a singular quadratic gradient term and a changing sign datum*, *Comm. on Pure and Appl. Analysis*, 11 (2012), 1875–1895.
- [15] D. Giachetti, F. Petitta, S. Segura de León, *A priori estimates for elliptic problems with a strongly singular gradient term and a general datum*, *Diff. Int. Eq.* 26 (2013), no. 9-10, 913–948.
- [16] D. Giachetti, P.J. Martinez-Aparicio, F. Murat, *A semilinear elliptic equation with a mild singularity at  $u = 0$ : existence and homogenization*, *J. Maths. Pures Appl.* 107 (2017), 41-77.
- [17] D. Giachetti, P.J. Martinez-Aparicio, F. Murat, *Definition, existence, stability and uniqueness of the solution to semilinear elliptic problem with a strong singularity at  $u = 0$* , *Ann. Sc. Norm. Super. Pisa Cl.Sci.* 18 (2018), 1395-1442.
- [18] B. Hamour, F. Murat, *Quasilinear problems involving a perturbation with quadratic growth in the gradient and a noncoercive zeroth order term*, *Rend. Lincei Mat. Appl.* 27 (2016), 195-233.
- [19] B. Hamour, *Singular quasilinear problems with quadratic growth in the gradient*, *Le Matematiche*, Vol. LXXVII (2022), Issue II, pp. 265-292
- [20] J. Leray, J.-L.Lions, *Quelques résultats de Višik sur les problèmes elliptiques non linéaires par les méthodes de Minty-Browder*, *Bull. Soc. Math. France* 93 (1965), 97-107.
- [21] J.-L. Lions, *Quelques méthodes de résolution des problèmes aux limites non linéaires*, Dunod et Gauthier-Villars, Paris, 1969.
- [22] A. Merah, H. Redwane, K. Zaki, *Nonlinear elliptic equations with unbounded coefficient and singular*, *J. Fixed Point Theory Appl.* 22(2020), no. 3, Paper: 68, 18 pp.
- [23] F. Oliva, F. Petitta, *Finite and infinite energy solutions of singular elliptic problems: existence and uniqueness*, *J. Diff. Eq.* 264 (2018), no. 1, 311–340
- [24] G. Stampacchia, *Le problème de Dirichlet pour les équations elliptiques du second ordre à coefficients discontinus*, *Ann. Inst. Fourier* 15 (1965), 189-258.
- [25] Z. Zhang *Two classes of nonlinear singular Dirichlet problems with natural growth: existence and asymptotic behavior*, *Adv. Nonlinear Stud.* 20 (2020), no. 1, 77–93.