

METHOD TO COMPUTE ANNUAL AVERAGE USING CFD MODELS

JURADO Xavier, REIMINGER Nicolas, VAZQUEZ José,
BLOND Nadège, WEMMERT Cédric.

Xavier Jurado 19 October 2022

Université

de Strasbourg



TABLE OF MATTER



- > **CFD model advantages and limits**
 - > **Interpolating wind data**
 - > **Computing annual average**
- > **Error from the discretization of the wind roses**
 - > **Predicting the error from the discretization**
- > **NO_x/NO₂ relationship**
- > **References**

3D CFD : A FINE MODELISATION FOR LOCAL POLLUTION SOURCE ESTIMATION

Complex equations

$$\frac{\partial \rho}{\partial t} + \nabla \cdot (\rho u) = 0 \quad \rho \left(\frac{\partial u}{\partial t} + u \cdot \nabla u \right) = -\nabla p + \nabla \cdot (2\mu_{eff} D(u)) - \nabla \cdot \left(\frac{2}{3} \mu_{eff} (\nabla \cdot u) \right) + \rho g$$

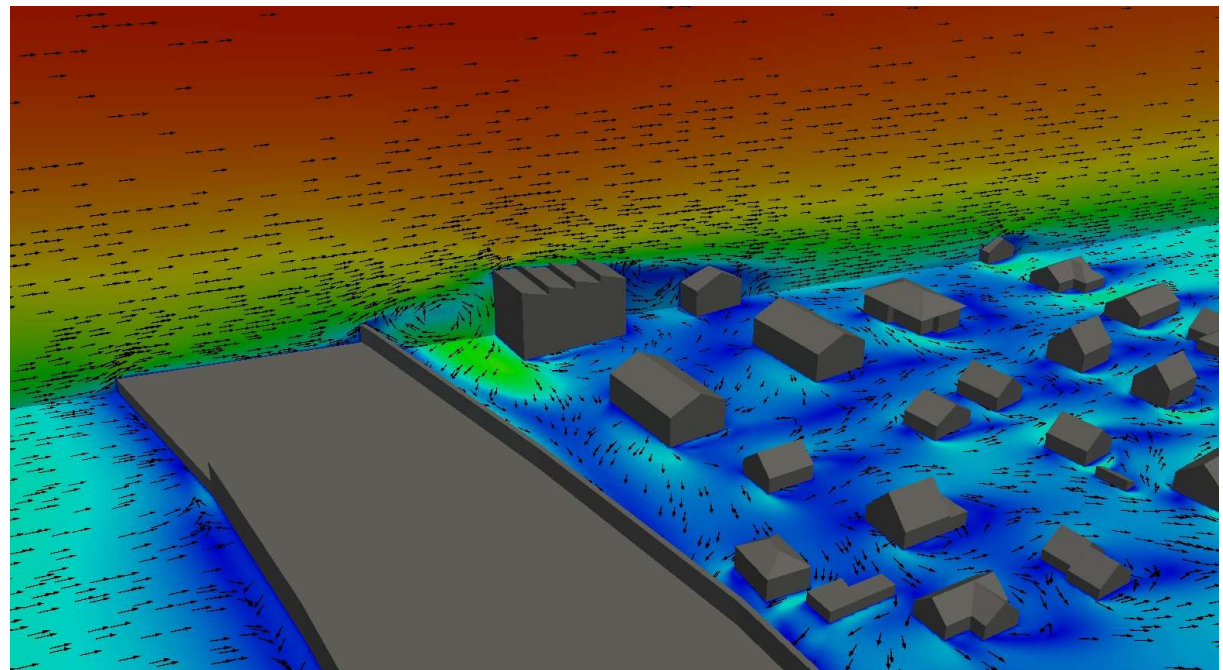
$$\frac{\partial \rho e}{\partial t} + \nabla \cdot (\rho u e) + \frac{\partial \rho K}{\partial t} + \nabla \cdot (\rho u K) + \nabla \cdot (u p) = \nabla \cdot (\alpha_{eff} \nabla e) + \rho g \cdot u$$

... Model able to take into account complex phenomenon :

- Buildings
- Turbulence
- Speed variations
- Recirculation
- Transient effects
- ...

Richards and Hoxey (1993)

Richards and Norris (2011)



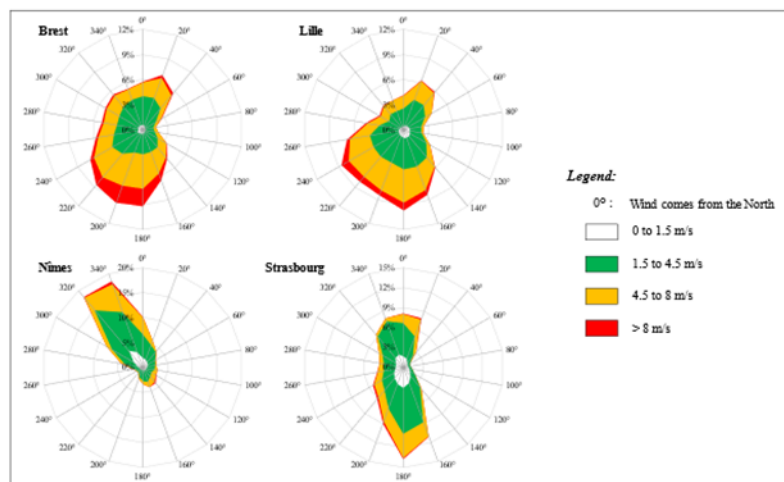
HOW CAN ANNUAL EXPOSURE BE DETERMINED WITH MODELLING ?

Forward way : Simulate every meteorological conditions hour by hour on the whole year and then averaging the concentration to get the annual exposure.

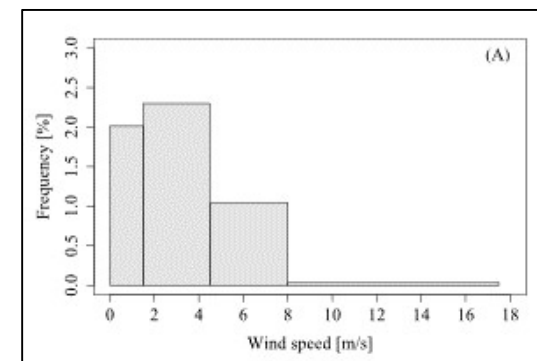
~~UNREALISTIC~~ Why? →

An area of interest of a few hectares can require several hours of computation for one wind direction and one wind speed.

Solution : Statical approach based on wind frequencies on intensity and direction



Wind direction frequencies



Wind intensity frequencies of a wind direction

Reiminger et al (2020)

INTERPOLATING WIND INTENSITY FREQUENCIES

Weibull function

$$f(v) = \frac{k}{\lambda} \left(\frac{v}{\lambda}\right)^{k-1} e^{-(v/\lambda)^k}$$

Sigmoid function

$$f(v) = \alpha \cdot \left(-1 + \frac{1}{1 + \beta_1 \cdot e^{-\gamma_1 \cdot v}} + \frac{1}{1 + \beta_2 \cdot e^{\gamma_2 \cdot v}} \right)$$

Conditions :

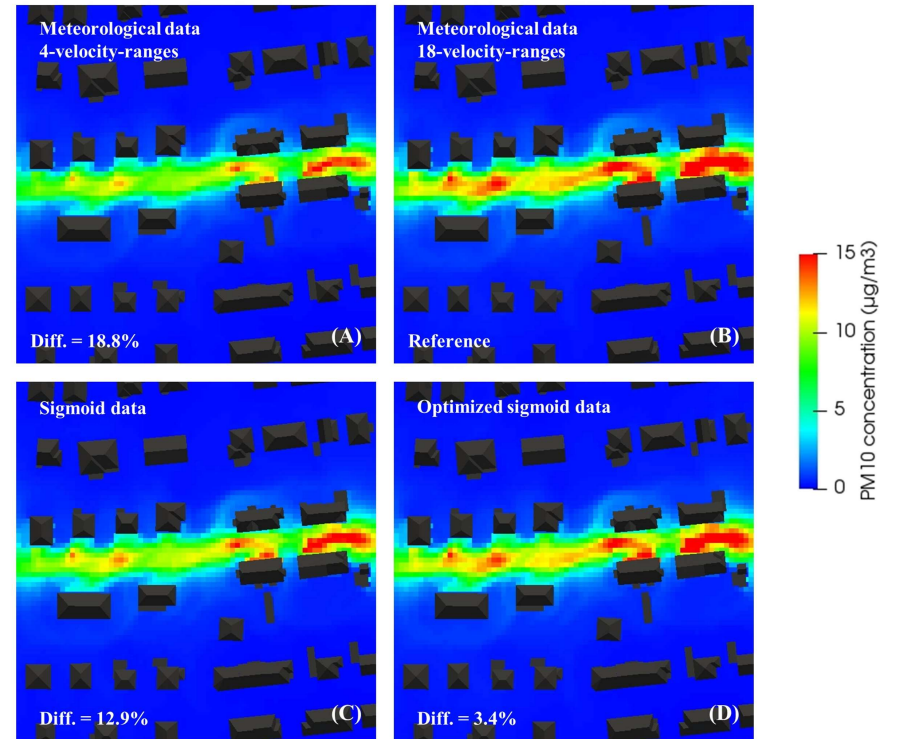
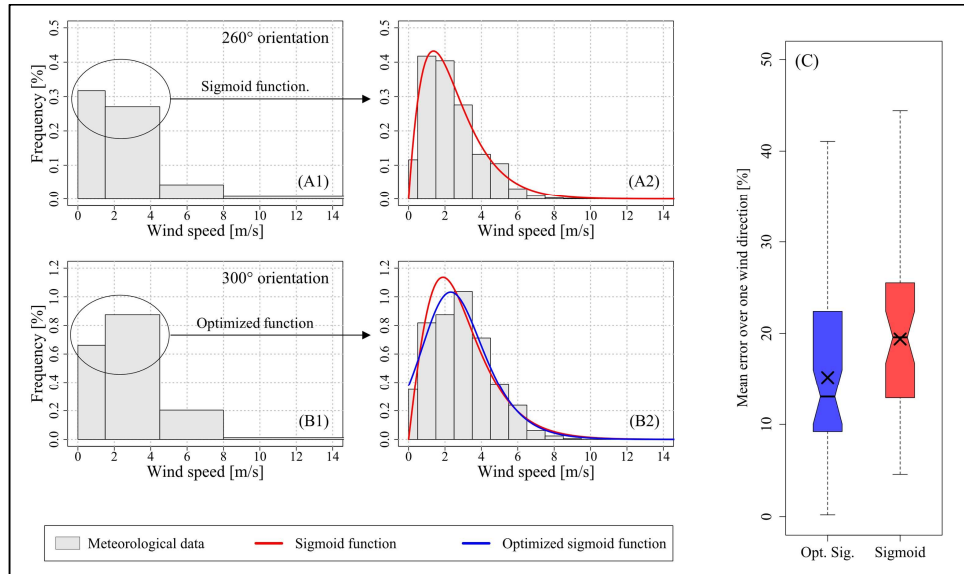
$$\int_a^b f(v) \cdot dv = FVR_{[a;b]}$$

$$f(0) = 0$$

or

$$f(0) = FVR_{[0;\alpha]} \frac{FVR_{[0;\alpha]}}{FVR_{[\alpha;\beta]}}$$

▼ Sigmoid allow a different approach for some type of wind profile



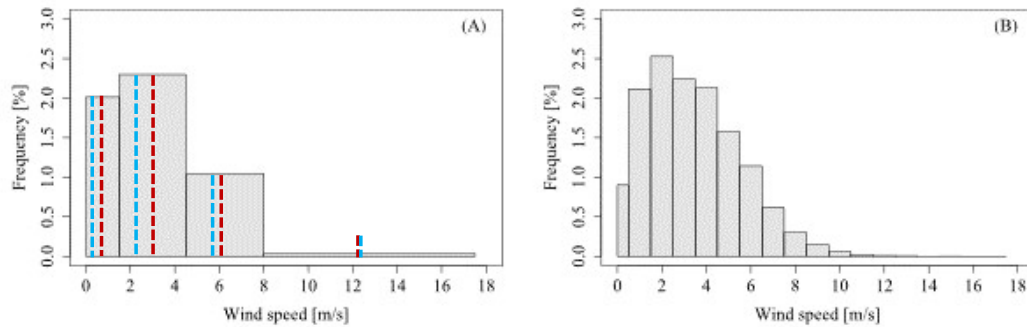
Reiminger et al (2020)

ASSESSING MEAN ANNUAL CONCENTRATION

$$\bar{C} = \frac{\sum_{i=1}^n \bar{C}_d \cdot f_d}{\sum_{i=1}^n f_d}$$

$$C_u = U_{ref} \cdot \frac{C_{ref}}{u}$$

$$\bar{C}_d = \frac{\sum_{r=1}^n C_{d,r} \cdot f_{d,r}}{\sum_{r=1}^n f_{d,r}} + C_{bg}$$



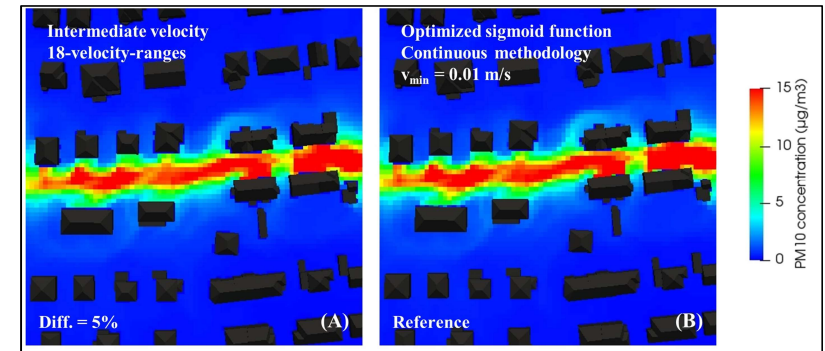
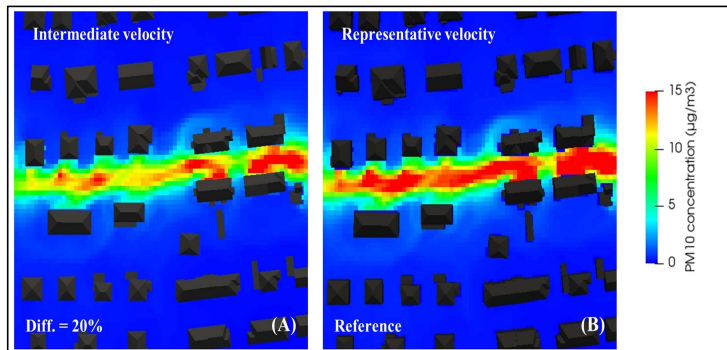
$$f(v) = \alpha \cdot \left(-1 + \frac{1}{1 + \beta_1 \cdot e^{-\gamma_1 \cdot v}} + \frac{1}{1 + \beta_2 \cdot e^{\gamma_2 \cdot v}} \right)$$

$$\bar{C}_d = C_{max} \cdot \frac{\int_0^{v_{min}} f(v) \cdot dv}{\int_0^{+\infty} f(v) \cdot dv} + \frac{\int_{v_{min}}^{+\infty} c(v) \cdot f(v) \cdot dv}{\int_0^{+\infty} f(v) \cdot dv} + C_{bg}$$

Threshold value because 1/v diverge when v->0

~~$$v_r = \frac{v_{min} + v_{max}}{2}$$~~

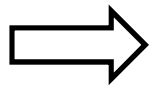
$$v_r = \sqrt{\frac{2}{\frac{1}{v_{max}^2} + \frac{1}{v_{min}^2}}}$$



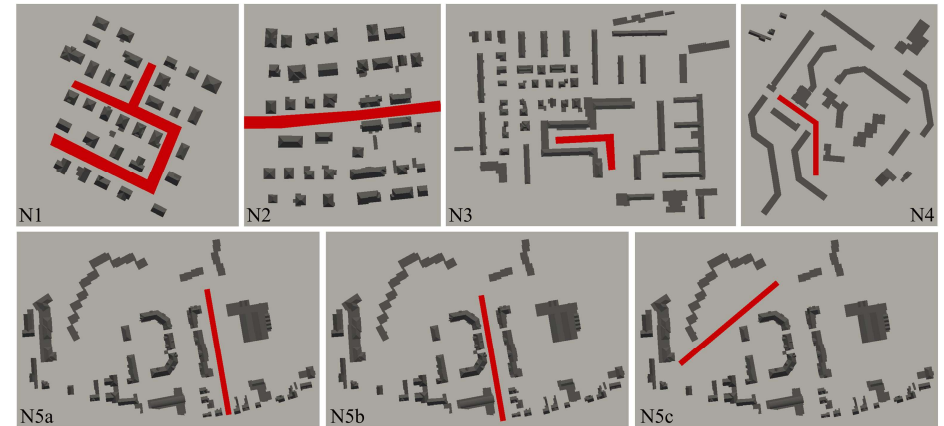
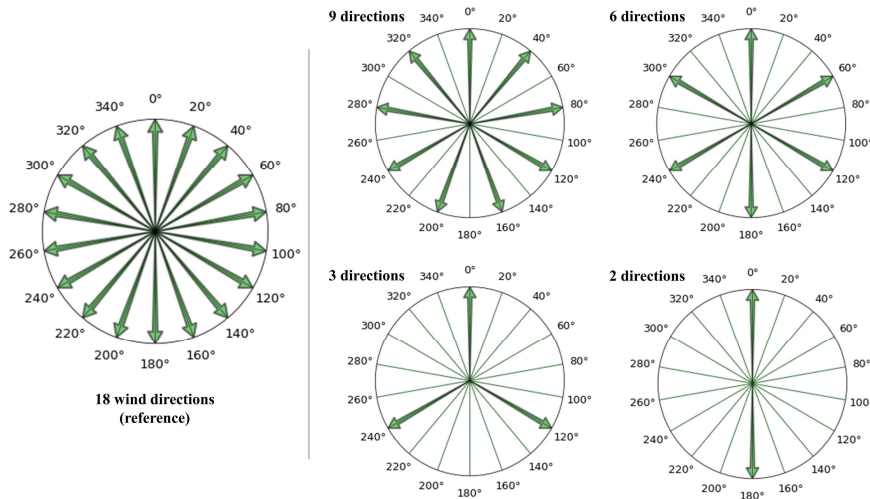
IN PRACTICE, HOW MANY DIRECTIONS ARE NEEDED ?

$$\bar{C} = \frac{\sum_{i=1}^n \bar{C}_d \cdot f_d}{\sum_{i=1}^n f_d}$$

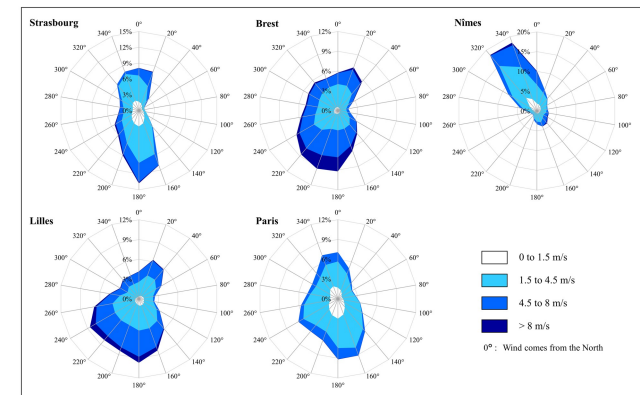
Issue : To compute the average annual concentration of an area it is necessary to make the summation of the different wind directions weighted by their frequencies.



How many directions needs to be computed ? Each direction is a supplementary cost

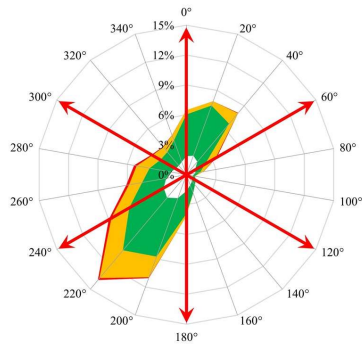


For 5 building layouts 18 wind directions were computed and the annual average determined for 5 different type of wind roses



TWO STRATEGIES : PREDOMINANT WIND DIRECTION AGAINST HOMOGENEOUS DISCRETIZATION

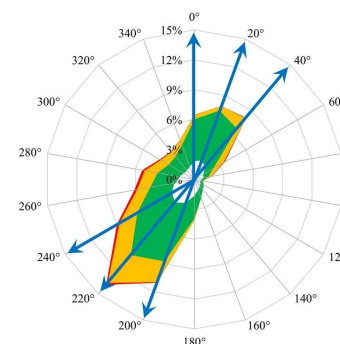
Strategy 1 : Homogeneous discretization



Advantage :

Every direction will not be too far from a computed wind direction and thus not too badly taken into account

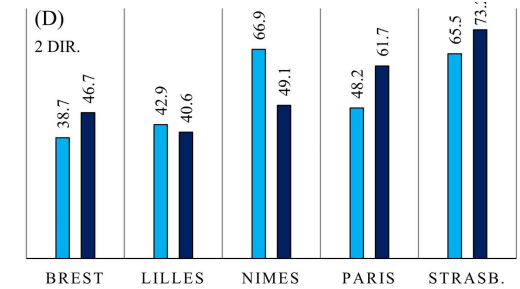
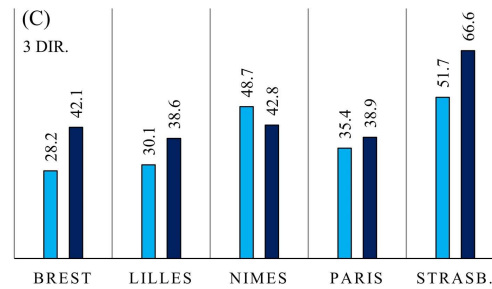
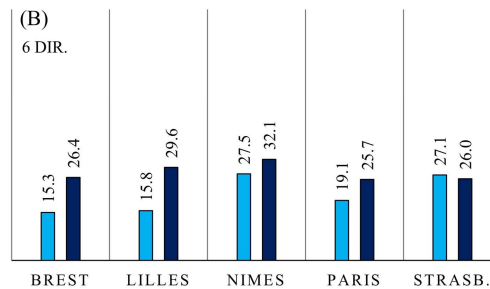
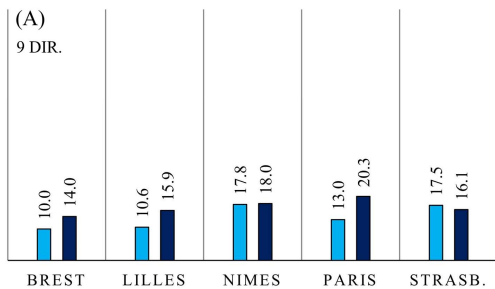
Strategy 2 : Predominant wind direction frequency



Advantage :

The wind direction that impact the concentration the most are the best taken into account

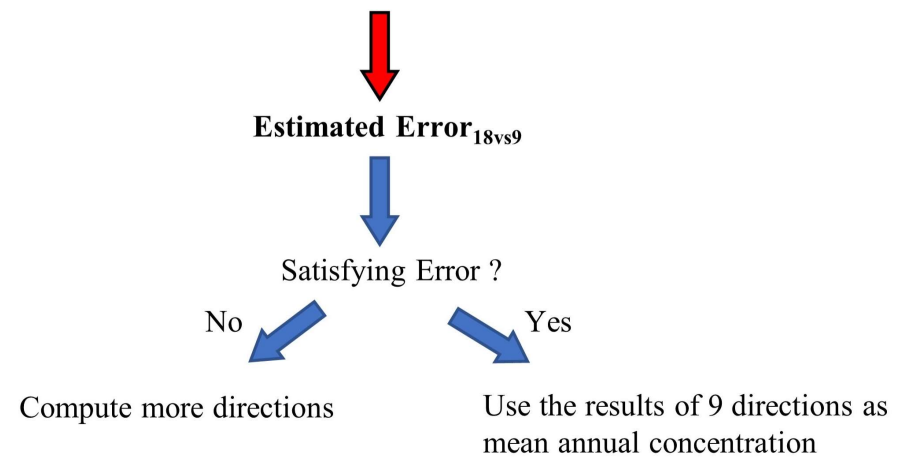
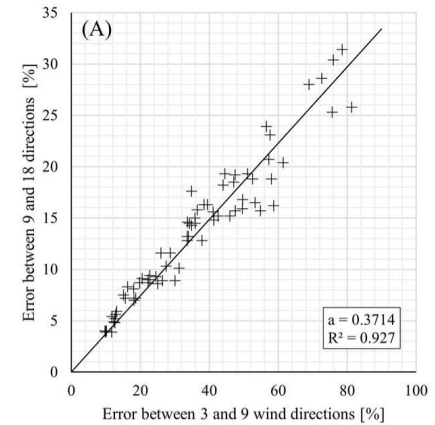
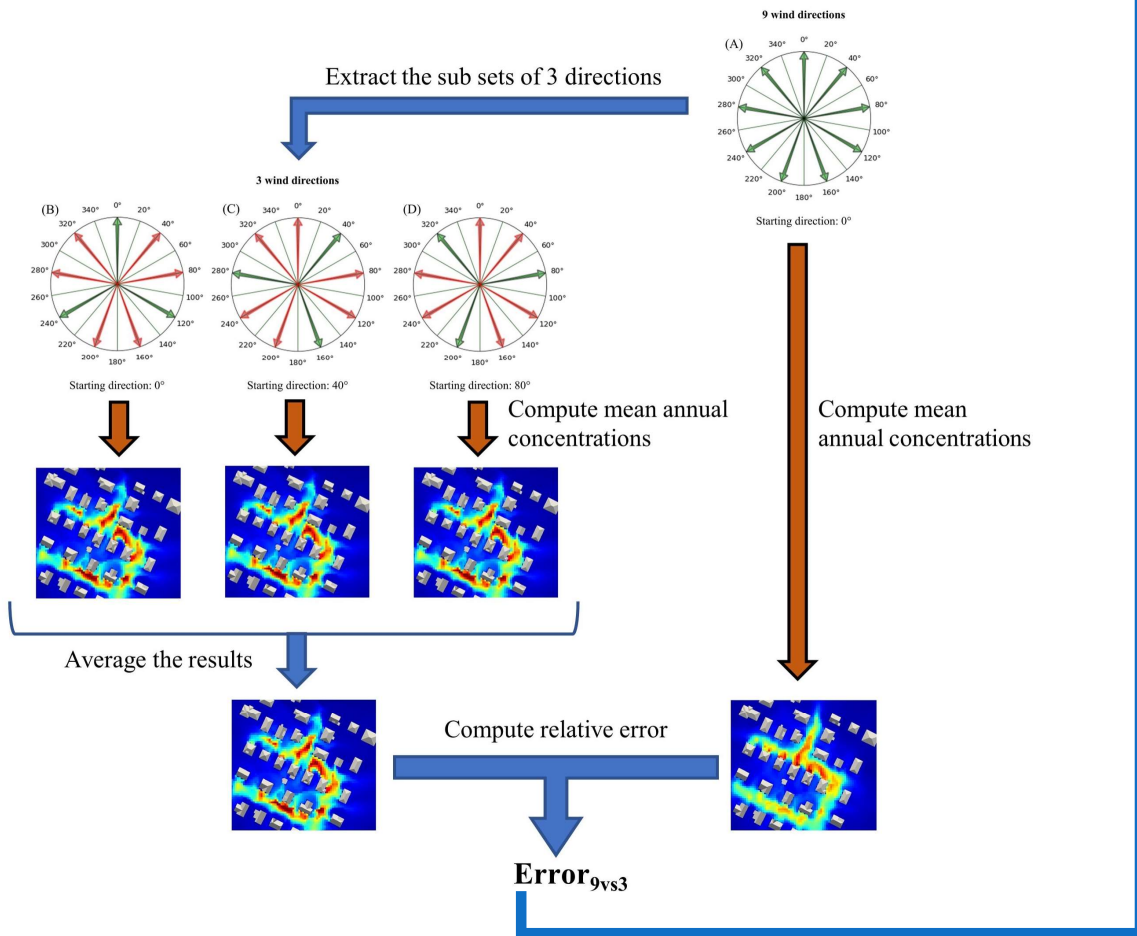
■ Homogeneous ■ Predominant



1 Homogenous is better in ¾ of the cases

2 High variance in the error, no general trend

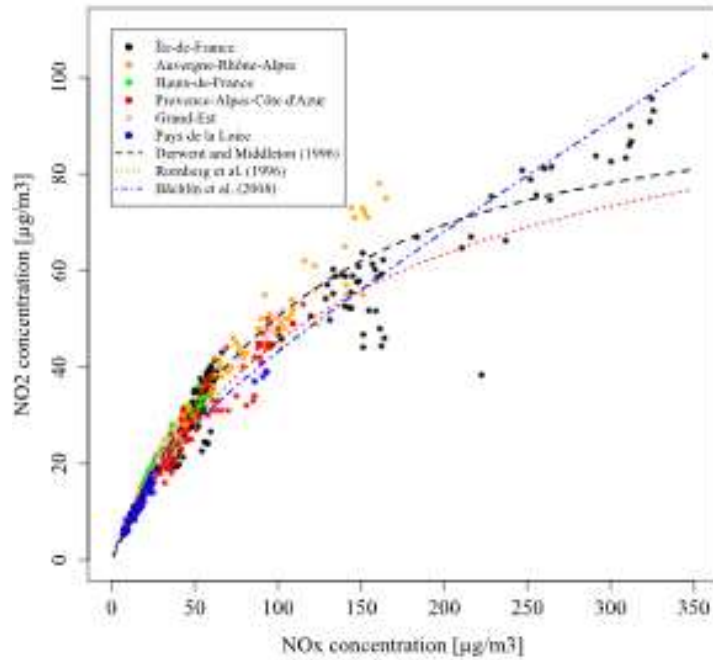
DETERMINE THE ERROR THAT IS MADE COMPARED TO 18 DIRECTIONS



RELATIONSHIP BETWEEN NO₂/NO_x AND PM₁₀/PM_{2.5}



NO₂/NO_x



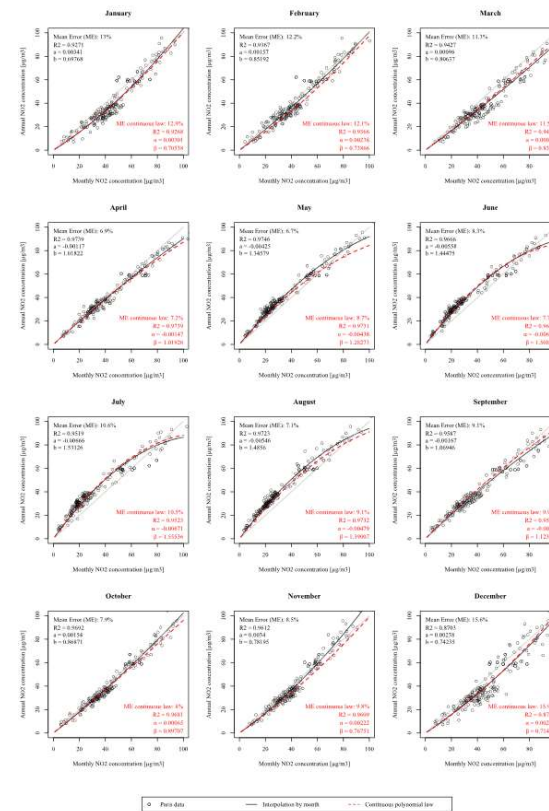
3 relationship from the literature :

Derwent and Middleton (1996)

Romberg et al (1996)

Bachlin et al (2008)

Mean error on France dataset : 8%

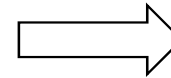


Good correlation between monthly and annual concentration for each month with a mean error below 10% with a quadratic relationship

Improvement of 38% using the quadratic law results (16%) than the direct month concentration as annual concentration (28%)

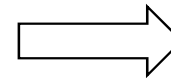
REFERENCE

Reiminger, N., Jurado, X., Vazquez, J., Wemmert, C., Dufresne, M., Blond, N., and Wertel, J. Methodologies to assess mean annual air pollution concentration combining numerical results and wind roses. *Sustainable Cities and Society* 59(Aug.18 2020), 10222



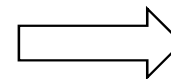
Article on the interpolation of wind data and the statistical approach to compute mean annual concentration

Jurado, X., Reiminger, N., Vazquez, J., and Wemmert, C. On the minimal wind directions required to assess mean annual air pollution concentration based on CFD results. *Sustainable Cities and Society* 71(Aug. 2021), 10292



Article on the discretization of the wind roses and the method to determine the error from it

Jurado, X., Reiminger, N., Vazquez, J., Wemmert, C., Dufresne, M., Blond, N., and Wertel, J. Assessment of mean annual NO₂ concentration based on a partial dataset. *Atmospheric Environment* 221(Jan. 2020), 117087



Article on NO_x/NO₂ data sensors over France and annual average from monthly measurements