



**HAL**  
open science

## Single-agent gemcitabine in patients with advanced, pre-treated angiosarcoma: A multicenter, retrospective study

Sarah Watson, Benjamin Verret, Stanislas Ropert, Julien Adam, Rastislav Bahleda, Sylvain Briand, Andrea Cavalcanti, Ali Chamseddine, Charles Court, Elie Fadel, et al.

### ► To cite this version:

Sarah Watson, Benjamin Verret, Stanislas Ropert, Julien Adam, Rastislav Bahleda, et al.. Single-agent gemcitabine in patients with advanced, pre-treated angiosarcoma: A multicenter, retrospective study. *Cancer Medicine*, 2022, 12 (3), pp.3160-3166. 10.1002/cam4.5147 . hal-04520147

**HAL Id: hal-04520147**

**<https://hal.science/hal-04520147v1>**

Submitted on 5 Jun 2024

**HAL** is a multi-disciplinary open access archive for the deposit and dissemination of scientific research documents, whether they are published or not. The documents may come from teaching and research institutions in France or abroad, or from public or private research centers.




L'archive ouverte pluridisciplinaire **HAL**, est destinée au dépôt et à la diffusion de documents scientifiques de niveau recherche, publiés ou non, émanant des établissements d'enseignement et de recherche français ou étrangers, des laboratoires publics ou privés.



Distributed under a Creative Commons Attribution 4.0 International License

## BRIEF COMMUNICATION

# Single-agent gemcitabine in patients with advanced, pre-treated angiosarcoma: A multicenter, retrospective study

Sarah Watson<sup>1</sup>  | Benjamin Verret<sup>2</sup> | Stanislas Ropert<sup>3</sup> | Julien Adam<sup>4</sup> | Rastislav Bahleda<sup>5</sup> | Sylvain Briand<sup>6</sup> | Andrea Cavalcanti<sup>7</sup> | Ali N. Chamseddine<sup>8</sup> | Charles Court<sup>6</sup> | Elie Fadel<sup>9</sup> | Matthieu Faron<sup>7</sup>  | Leila Haddag-Miliani<sup>10</sup> | Clémence Henon<sup>2</sup> | Cécile Le Pechoux<sup>11</sup> | Antonin Levy<sup>11</sup> | Olaf Mercier<sup>9</sup> | Carine Ngo<sup>4</sup> | Charles Honoré<sup>7</sup> | Axel Le Cesne<sup>8</sup> | Olivier Mir<sup>2,12</sup> 

<sup>1</sup>Department of Medical Oncology, Curie Institute, Paris, France

<sup>2</sup>Division of Cancer Medicine, Gustave Roussy, Villejuif, France

<sup>3</sup>Department of Medical Oncology, Antony Private Hospital, Antony, France

<sup>4</sup>Division of Biology and Pathology, Gustave Roussy, Villejuif, France

<sup>5</sup>Division of Drug Development (DITEP), Gustave Roussy, Villejuif, France

<sup>6</sup>Department of Orthopedic Surgery, Kremlin-Bicêtre Teaching Hospital, Université Paris-Saclay, Le Kremlin-Bicêtre, France

<sup>7</sup>Division of Surgery, Gustave Roussy, Villejuif, France

<sup>8</sup>Division of International Patients Care, Gustave Roussy, Villejuif, France

<sup>9</sup>Department of Thoracic Surgery, Marie Lannelongue Teaching Hospital, Université Paris-Saclay, Le Plessis-Robinson, France

<sup>10</sup>Department of Medical Imaging, Gustave Roussy, Villejuif, France

<sup>11</sup>Division of Radiation Oncology, Gustave Roussy, Villejuif, France

<sup>12</sup>Department of Ambulatory Cancer Care, Gustave Roussy, Villejuif, France

**Correspondence**

Olivier Mir, Gustave Roussy, 114, rue Edouard Vaillant 94800 Villejuif, France.

Email: [olivier.mir@gustaveroussy.fr](mailto:olivier.mir@gustaveroussy.fr); [omir@amgen.com](mailto:omir@amgen.com)

Sarah Watson, Institut Curie, 26, rue d'Ulm 75005 Paris, France.

Email: [sarah.watson@curie.fr](mailto:sarah.watson@curie.fr)

**Abstract**

Gemcitabine has shown clinical activity against angiosarcoma in small series, alone, or combined with taxanes. We aimed to evaluate its activity as a single-agent in a larger series of patients with advanced angiosarcoma. We retrospectively reviewed the electronic medical records of consecutive adult patients with advanced angiosarcoma treated with single-agent gemcitabine at our institutions from January 2010 to January 2021. Response was evaluated according to RECIST 1.1, and toxicity was graded according to NCI-CTC v5.0. 42 patients were identified. 38 patients (90%) had received prior anthracyclines and weekly paclitaxel, and 9 (21%) had received pazopanib. The best tumor response was partial response (PR) in 16 patients (38%), or stable disease (10 patients, 24%). All 8 patients with cardiac angiosarcoma experienced a PR. Median PFS was 5.4 months (95%CI: 3.1–6.5), and median OS was 9.9 months (95%CI: 6.6–13.4). Single-agent

Preliminary results from this study have been presented at the 2021 ASCO annual meeting (abstract e23547).

This is an open access article under the terms of the [Creative Commons Attribution](https://creativecommons.org/licenses/by/4.0/) License, which permits use, distribution and reproduction in any medium, provided the original work is properly cited.

© 2022 The Authors. *Cancer Medicine* published by John Wiley & Sons Ltd.

gemcitabine has clinically meaningful activity in advanced, heavily pre-treated angiosarcoma.

#### KEYWORDS

angiosarcoma, cardiac sarcoma, gemcitabine, sarcoma, soft tissue neoplasms

## 1 | BACKGROUND

Angiosarcoma are a genetically heterogeneous and aggressive group of mesenchymal tumors that represent 1%–4% of soft-tissue sarcoma.<sup>1</sup> Approximately 50% of cases arise in cutaneous sites (in an irradiated field or not), the remaining arising in limbs, trunk, and viscera (including heart and large vessels). Current frontline treatments active against advanced, unresectable angiosarcoma are doxorubicin-based chemotherapy and weekly paclitaxel,<sup>2</sup> but systemic treatment options beyond these two key drugs are limited.<sup>1</sup>

Gemcitabine, a cytidine analog with demonstrated efficacy in a broad spectrum of tumors,<sup>3</sup> has limited clinical activity (as a single-agent) in unselected soft-tissue sarcoma.<sup>4–6</sup> Of note, a partial response was observed in one of the three patients with angiosarcoma in a seminal phase 2 trial in soft-tissue sarcoma.<sup>7</sup> Thereafter, gemcitabine has shown clinically meaningful activity against advanced angiosarcoma in single cases or small series, as a single agent, or in combination with taxanes.<sup>8–12</sup> In the largest series reported to date ( $n = 25$ ), a response rate of 68% was reported,<sup>13</sup> leading to suggest its use as salvage therapy for pre-treated, advanced angiosarcoma in recent international recommendations.<sup>14</sup>

Moreover, gemcitabine seems to be active in tumors overexpressing ABCB1 (MDR1, formerly “P-glycoprotein”), a transporter frequently expressed in pre-treated sarcoma.<sup>15,16</sup> ABCB1 is also involved in resistance mechanisms to anthracyclines and taxanes and represents a hallmark of the pharmacological concept of multi-drug resistance.<sup>17</sup>

The aim of this retrospective, multicenter study was to evaluate the clinical activity and safety of single-agent gemcitabine in adult patients with progressive, advanced angiosarcoma.

## 2 | PATIENTS AND METHODS

We retrospectively reviewed the medical records of consecutive patients with advanced angiosarcoma treated with single-agent gemcitabine in our institutions from January 2010 to January 2021, after ethical approval by

the local Institutional Review Boards. Informed consent was obtained from all patients or relatives.

Eligible patients were adults with progressive, metastatic angiosarcoma neither eligible for surgical resection nor for a clinical trial, or having exhausted other conventional chemotherapy regimens. All cases were confirmed by a pathologist from the French network of expert sarcoma pathologists (RRePS). Imaging data were centrally reviewed, and only patients with confirmed tumor progression according to RECIST 1.1<sup>18</sup> before treatment with gemcitabine were included. Patients with exclusive skin involvement were excluded. Patients and tumor characteristics, previous treatment lines, tumor response, and safety were recorded.

Exclusion criteria included bone angiosarcoma and treatment with gemcitabine in combination with other drugs.

### 2.1 | Treatment

Patients received intravenous gemcitabine at a dose of 1000 mg/m<sup>2</sup> on days 1, 8, and 15 of a 28-day cycle. Treatment was pursued until tumor progression or major toxicity. Standard laboratory tests were performed weekly. G-CSF was administered in case of clinically meaningful neutropenia. Tumor evaluation using CT or MRI was performed every 2 cycles or earlier if clinically required.

### 2.2 | Evaluation criteria

The primary endpoint was the best tumor response according to RECIST 1.1. Secondary endpoints were: progression-free survival (PFS), overall survival (OS), and toxicity. PFS was defined as the time from gemcitabine initiation to disease progression, death, or last follow-up. OS was defined as the time from gemcitabine initiation to death or last follow-up. Gemcitabine-related clinical and biological toxicities were retrospectively collected and graded according to the National Cancer Institute Common Terminology Criteria for Adverse Events (NCI-CTCAE) version 5.0.<sup>19</sup>

## 2.3 | Statistical analysis

Median, ranges, and 95% confidence intervals (95% CI) were used to describe patients' characteristics. The NCSS 2020™ software (<https://www.ncss.com/>) was used for data analysis. The Kaplan–Meier method<sup>19</sup> and logrank tests were used for survival data analyses.

## 3 | RESULTS

### 3.1 | Patients' characteristics

Between January 1, 2010, and January 31, 2021, a total of 126 patients with metastatic angiosarcoma were treated at our institutions. Among them, 73 did not receive gemcitabine due to altered PS, progression, or death after weekly paclitaxel and/or doxorubicin ( $n = 41$ ), or patient's preference for oral treatments ( $n = 12$ ). Out of the remaining 53 patients, 11 were excluded (eight received gemcitabine in combination with other cytotoxic agents, and another three were not progressive over  $3 \pm 0.5$  months at the time of gemcitabine initiation).

Overall, 42 patients were eligible for the present analysis. Median age was 52 years (range: 25–90), median PS: 1 (range: 0–2), 36 were women. Patients' baseline characteristics are summarized in Table 1. Ten patients (24%) had locally advanced disease; the median number of metastatic sites was two (range: 1–4) in the remaining 32 patients. All patients but four ( $n = 38$ , 90%) had received prior anthracyclines (either peri-operatively or in the metastatic setting) and weekly paclitaxel, and nine (21%) had received pazopanib. Hence, gemcitabine was given as second, third, and fourth line in seven (17%), 20 (47%), and 15 (36%) patients, respectively.

### 3.2 | Treatment disposition

The median duration of treatment was 5.2 months (range: 0.4–18.7). All patients but 9 (who rapidly progressed) received at least two cycles of treatment. One patient with metastatic cardiac angiosarcoma died of a non-tumor-related cause (head trauma) while she had an ongoing partial response.

Dose reductions (down to  $800 \text{ mg/m}^2$ ) were needed in three patients (7%) due to cumulative hematological grade 2–3 toxicities after four cycles. Twenty patients (48%) were able to receive one or more subsequent treatment lines after progression under gemcitabine.

TABLE 1 Patients baseline characteristics ( $n = 42$ )

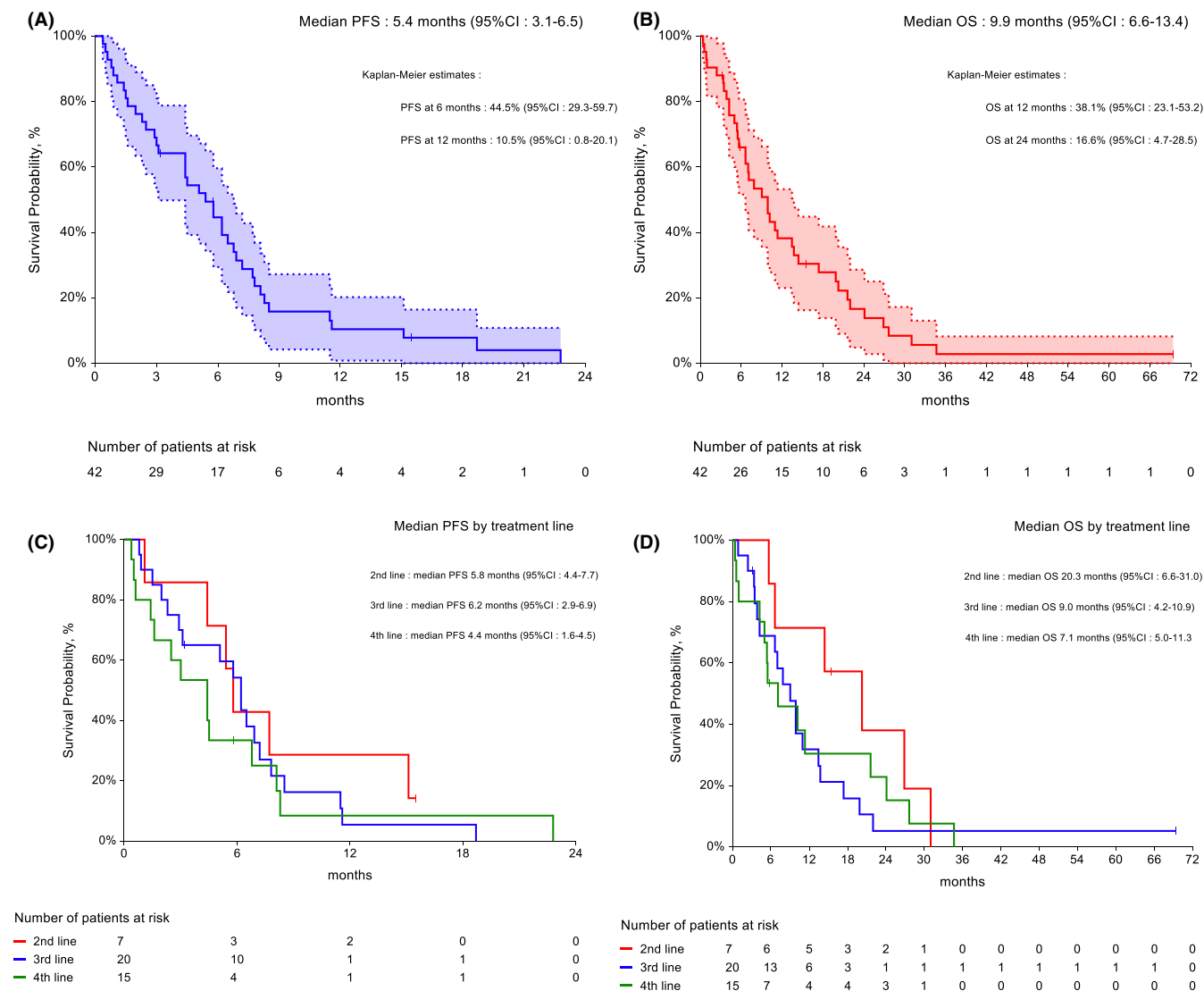
| Characteristic   |            |
|--|------------|
| Age (years): median (range)  | 52 (25–90) |
| Performance status: median (range)   | 1 (0–2)    |
| Gender: $n$ (%)  |            |
| Male   | 6 (14%)    |
| Female   | 36 (86%)   |
| Primary site: $n$ (%)  |            |
| Breast/chest wall  | 12 (29%)   |
| Face/scalp   | 9 (21%)    |
| Heart  | 8 (19%)    |
| Other viscera  | 7 (17%)    |
| Limbs  | 7 (17%)    |
| Disease extent: $n$ (%)  |            |
| Locally advanced   | 10 (24%)   |
| Metastatic   | 32 (76%)   |
| Number of metastatic sites: median (range)                                   | 2 (1–4)    |
| Previous systemic treatments in neoadjuvant and metastatic settings: $n$ (%) |            |
| Anthracyclines   | 38 (90%)   |
| Weekly Paclitaxel  | 38 (90%)   |
| Ifosfamide   | 13 (31%)   |
| Pazopanib  | 9 (21%)    |
| Oral cyclophosphamide  | 6 (14%)    |
| Dacarbazine  | 4 (10%)    |
| Vinorelbine  | 4 (10%)    |

### 3.3 | Efficacy

The median follow-up was 8.5 months (95% CI: 4.7–12.3). The best tumor response was partial response (PR) in 16 patients (38%), or stable disease (10 patients, 24%). All patients with cardiac angiosarcoma experienced a PR, as well as four of 10 patients with angiosarcoma arising in irradiated field, as well as three of the four patients with brain metastases. Median PFS was 5.4 months (95% CI: 3.1–6.5, Figure 1, panel A), and median OS was 9.9 months (95% CI: 6.6–13.4, Figure 1, panel B). No baseline variable (including previous treatment lines) significantly influenced PFS and OS (Figure 1, panel C and panel D).

### 3.4 | Toxicity

Toxicity data are summarized in Table S1. Eleven patients (26%) experienced grade 3 toxicity. Grade 3 anemia and thrombocytopenia occurred in three (8%) patients each. Two patients (5%) experienced febrile neutropenia. Two



**FIGURE 1** (A) progression-free survival,  $n = 42$ ; (B) overall survival,  $n = 42$ . Dotted lines indicate 95% confidence intervals. (C) Impact of previous treatment lines on progression-free survival. (D) Impact of previous treatment lines on overall survival.

cases (5%) of grade 3 hemolytic and uremic syndrome were observed, both after eight cycles of treatment. No other grade 3 or higher non-hematological toxicity was observed. No grade 4–5 toxicity was observed.

## 4 | DISCUSSION

In this retrospective, multicenter study of 42 patients with advanced, pre-treated angiosarcoma receiving single-agent gemcitabine (the largest series reported to date), we observed evidence of significant anti-tumor activity, along with an acceptable toxicity profile.

The primary aim of this study was to evaluate the anti-tumor efficacy of single-agent gemcitabine in second, third, or fourth metastatic line. We were not able to replicate the response rate of 68% reported in a

previous series ( $n = 25$ ) from the Italian Rare Cancer Network.<sup>13</sup> Of note, 7/25 (28%) in the Italian series had previously received doxorubicin and 17/25 (68%) weekly paclitaxel, whereas these rates were 90% and 90% in our series.

The median PFS and OS in the present series (5.4 and 9.9 months, respectively) were lower than those observed in less heavily pre-treated patients in the Italian series (7 and 17 months, respectively). Hence, our results are not contradictory with those previously reported in a smaller series, and add evidence to the activity of gemcitabine in patients with angiosarcoma pre-treated with the current standard of care for advanced disease. Notably, the treatment line did not seem to affect PFS, suggesting that gemcitabine might be active even in some multi-drug resistant tumors, possibly due to its activity in ABCB1-expressing tumor cells.<sup>16</sup>

In this context, single-agent gemcitabine appears an attractive option in advanced angiosarcoma, among other options. Currently approved systemic treatment options beyond anthracyclines and weekly paclitaxel are limited to pazopanib<sup>20</sup> and oral cyclophosphamide (with an activity restricted to angiosarcoma arising in irradiated field, and a potential anti-angiogenic effect of this schedule<sup>21</sup>).

Anti-VEGF agents seem a coherent approach given the vascular phenotype of angiosarcoma and the identification of *KDR* (a gene encoding for VEGFR2) activating mutations in up to 26% of cases.<sup>22</sup> In a retrospective study from EORTC (n = 40,<sup>20</sup>), the use of pazopanib resulted in a response rate of 20% and a median PFS of 3 (95%CI: 2.1–4.4) months. In dedicated phase 2 trials, the use of sorafenib and regorafenib was associated with response rates of 23% and 17.4%, respectively, confirming that oral anti-VEGF agents exert clinical activity against advanced angiosarcoma.<sup>23,24</sup> Conversely, the addition of bevacizumab or pazopanib to weekly paclitaxel failed to improve outcomes,<sup>25</sup> suggesting that combinations involving anti-VEGF agents should probably be further explored in more selected angiosarcoma subtypes (e.g., angiosarcoma with *KDR* mutations). We have also reported dramatic responses to pazopanib (including one pathological complete response) following treatment with the NOTCH inhibitor crenigacestat,<sup>26</sup> suggesting that the sequence of treatments in the metastatic setting should be further explored.

Investigational approaches include PD-1/PD-L1 inhibition, with several responses reported in small series of patients.<sup>27</sup> Of note, angiosarcoma arising in the head and neck often exhibits a high tumor mutational burden,<sup>22</sup> and PD-1/PD-L1 inhibition could represent a valuable treatment option in this setting. Other angiosarcoma subtypes vulnerable to PD-1/PD-L1 inhibition could be identified using tertiary lymphoid structures (TLS) as a potential predictive biomarker<sup>28</sup> in an ongoing clinical trial (NCT04095208). Several responses have also been reported under eribulin,<sup>29</sup> and another phase 2 trial is ongoing (NCT03331250).

Another critical finding of the present series is the activity of gemcitabine in patients with advanced cardiac angiosarcoma, with all eight patients having an objective response. Cardiac angiosarcoma represent a difficult-to-treat disease since the primary tumor is often unresectable, metastatic spread (to lungs and brain) is frequent at diagnosis, and the use of cardiotoxic drugs such as anthracyclines might be limited due to altered cardiac function.<sup>30</sup> Of note, two of three patients with metastatic cardiac angiosarcoma also experienced partial responses in the Italian series.<sup>13</sup> Given this unexpected response rate on one hand, and previous studies suggesting hENT1

(an efflux transporter for gemcitabine) as a potential biomarker for gemcitabine efficacy<sup>31,32</sup> on the other hand, we have initiated translational studies to determine whether hENT1 expression could be a targetable alteration in cardiac angiosarcoma.

Overall, our study is limited by its retrospective nature and the lack of translational data on *KDR* mutational status, TLS status, and expression of hENT1. However, we believe that our clinical data strengthen existing recommendations on the role of gemcitabine in the treatment of advanced angiosarcoma.

#### 4.1 | Implications for clinical care

Gemcitabine is an attractive option in advanced, pre-treated angiosarcoma due to its schedule of administration (30 min. Intravenous administration, feasible in the ambulatory setting) and a favorable toxicity profile. Single-agent gemcitabine represents an additional therapeutic option in advanced angiosarcoma adult patients pre-treated with doxorubicin and/or weekly paclitaxel.

## 5 | CONCLUSION

In our experience, single-agent gemcitabine demonstrated effective palliation along with acceptable toxicity in patients with progressive, advanced angiosarcoma. Our findings confirm that it represents an additional therapeutic option in this population, and its use should be further investigated in specific subpopulations (including cardiac angiosarcoma).

## AUTHORS CONTRIBUTION

All authors have made substantial contributions to acquisition, analysis, and interpretation of data; all authors have been involved in revising the manuscript critically for important intellectual content; all authors have given final approval of the version to be published, and agreed to be accountable for all aspects of the work in ensuring that questions related to the accuracy or integrity of any part of the work are appropriately investigated and resolved.

## CONFLICT OF INTEREST

Dr. Mir has received consultancy fees from Astra-Zeneca, Blueprint Medicines, Boehringer-Ingelheim, Bristol-Myers Squibb, Eli Lilly, Ipsen, Merck Sharpe & Dohme, Pfizer, Roche, Servier, and Vifor Pharma. Dr. Mir is an employee and shareholder of Amgen since February 1, 2022. Dr. Watson has received consultancy fees from Deciphera

and Amgen. Dr. Faron has received consultancy fees from HRA Pharma. Dr. Le Péchoux has received consultancy fees from Amgen, Astra-Zeneca, Eli-Lilly, Nanobiotix, and Roche. Prof. Court has received consultancy fees from Medtronic and Safeorthopaedic. He is a shareholder of NeuroFrance and SpineGuard. Dr. Le Cesne has received consultancy fees from Amgen, Bayer, Eli-Lilly, Novartis, Pfizer, and PharmaMar. Other authors have no conflict of interest to disclose.

## DATA AVAILABILITY STATEMENT

Requests for data supporting findings in the manuscript should be made to the corresponding author and will be reviewed individually on a quarterly basis. Data might be shared in the form of aggregate data summaries and via a data transfer agreement. Individual participant-level raw data containing confidential or identifiable patient information are subject to patient privacy and cannot be shared.

## ORCID

Sarah Watson  <https://orcid.org/0000-0003-4534-8783>

Matthieu Faron  <https://orcid.org/0000-0003-2331-0792>

Olivier Mir  <https://orcid.org/0000-0002-6761-4002>

## REFERENCES

- Chen TW, Burns J, Jones RL, Huang PH. Optimal clinical management and the molecular biology of angiosarcomas. *Cancers (Basel)*. 2020;12(11):3321. doi:10.3390/cancers12113321
- Penel N, Italiano A, Ray-Coquard I, et al. French sarcoma group (GSF/GETO). Metastatic angiosarcomas: doxorubicin-based regimens, weekly paclitaxel and metastasectomy significantly improve the outcome. *Ann Oncol*. 2012;23(2):517-523. doi:10.1093/annonc/mdr138
- Lund B, Kristjansen PE, Hansen HH. Clinical and pre-clinical activity of 2',2'-difluorodeoxycytidine (gemcitabine). *Cancer Treat Rev*. 1993;19(1):45-55. doi:10.1016/0305-7372(93)90026-n
- Okuno S, Edmonson J, Mahoney M, Buckner JC, Frytak S, Galanis E. Phase II trial of gemcitabine in advanced sarcomas. *Cancer*. 2002;94(12):3225-3229. doi:10.1002/cncr.10602
- Merimsky O, Meller I, Flusser G, et al. Gemcitabine in soft tissue or bone sarcoma resistant to standard chemotherapy: a phase II study. *Cancer Chemother Pharmacol*. 2000;45(2):177-181. doi:10.1007/s002800050027
- Ducoulombier A, Cousin S, Kotecki N, Penel N. Gemcitabine-based chemotherapy in sarcomas: a systematic review of published trials. *Crit Rev Oncol Hematol*. 2016;98:73-80. doi:10.1016/j.critrevonc.2015.10.020
- Patel SR, Gandhi V, Jenkins J, et al. Phase II clinical investigation of gemcitabine in advanced soft tissue sarcomas and window evaluation of dose rate on gemcitabine triphosphate accumulation. *J Clin Oncol*. 2001;19(15):3483-3489. doi:10.1200/JCO.2001.19.15.3483
- Kajihara I, Maeda S, Yamada S, et al. Biweekly gemcitabine therapy induces complete remission in cutaneous angiosarcoma resistant to multiple anticancer drugs. *J Dermatol*. 2015;42(12):1197-1198. doi:10.1111/1346-8138.13077
- Yonezawa I, Waki M, Tamura Y, et al. Gemcitabine-based regimen for primary ovarian angiosarcoma with MYC amplification. *Curr Oncol*. 2014;21(6):e782-e789. doi:10.3747/co.21.2144
- Luo ZG, Wang Q, Peng W, Hu XC, Hong XN. Advanced breast angiosarcoma completely responding to gemcitabine-containing chemotherapy. *Breast Care (Basel)*. 2012;7(5):414-416. doi:10.1159/000343614
- Tsubouchi K, Yoshioka H, Ishida T. Significant response to gemcitabine monotherapy in primary pleural epithelioid angiosarcoma. *J Thorac Oncol*. 2012;7(5):942-943. doi:10.1097/JTO.0b013e31824feab8
- Bender L, Gantzer J, Somme F, Weingertner N, Kurtz JE. Complete response of a pleural, hepatic, and splenic metastatic primary breast angiosarcoma using gemcitabine monotherapy. *JCO Oncol Pract*. 2020;16(4):181-183. doi:10.1200/JOP.19.00609
- Stacchiotti S, Palassini E, Sanfilippo R, et al. Gemcitabine in advanced angiosarcoma: a retrospective case series analysis from the Italian rare cancer network. *Ann Oncol*. 2012;23(2):501-508. doi:10.1093/annonc/mdr066
- Gronchi A, Miah AB, Dei Tos AP, et al. Soft tissue and visceral sarcomas: ESMO-EURACAN-GENTURIS clinical practice guidelines for diagnosis, treatment and follow-up. *Ann Oncol*. 2021 Nov;32:1348-1365. doi:10.1016/j.annonc.2021.07.006
- Vergier B, Cany L, Bonnet F, Robert J, de Mascarel A, Coindre JM. Expression of MDR1/P glycoprotein in human sarcomas. *Br J Cancer*. 1993;68(6):1221-1226. doi:10.1038/bjc.1993.508
- Bergman AM, Pinedo HM, Talianidis I, et al. Increased sensitivity to gemcitabine of P-glycoprotein and multidrug resistance-associated protein-overexpressing human cancer cell lines. *Br J Cancer*. 2003;88(12):1963-1970. doi:10.1038/sj.bjc.6601011
- Lum BL, Gosland MP, Kaubisch S, Sikic BI. Molecular targets in oncology: implications of the multidrug resistance gene. *Pharmacotherapy*. 1993;13(2):88-109.
- Eisenhauer EA, Therasse P, Bogaerts J, et al. New response evaluation criteria in solid tumours: revised RECIST guideline (version 1.1). *Eur J Cancer*. 2009;45(2):228-247. doi:10.1016/j.ejca.2008.10.026 <https://ctep.cancer.gov/>, last accessed on March 18th, 2022
- Altman DG, Bland JM. Time to event (survival) data. *BMJ*. 1998;317(7156):468-469. doi:10.1136/bmj.317.7156.468
- Kollár A, Jones RL, Stacchiotti S, et al. Pazopanib in advanced vascular sarcomas: an EORTC soft tissue and bone sarcoma group (STBSG) retrospective analysis. *Acta Oncol*. 2017;56(1):88-92. doi:10.1080/0284186X.2016.1234068
- Mir O, Domont J, Cioffi A, et al. Feasibility of metronomic oral cyclophosphamide plus prednisolone in elderly patients with inoperable or metastatic soft tissue sarcoma. *Eur J Cancer*. 2011;47(4):515-519. doi:10.1016/j.ejca.2010.11.025
- Painter CA, Jain E, Tomson BN, et al. The angiosarcoma project: enabling genomic and clinical discoveries in a rare cancer through patient-partnered research. *Nat Med*. 2020;26(2):181-187. doi:10.1038/s41591-019-0749-z
- Ray-Coquard I, Italiano A, Bompas E, et al. French sarcoma group (GSF/GETO). Sorafenib for patients with advanced angiosarcoma: a phase II trial from the French sarcoma group (GSF/GETO). *Oncologist*. 2012;17(2):260-266. doi:10.1634/theoncologist.2011-0237

24. Agulnik M, Schulte B, Robinson S, et al. An open-label single-arm phase II study of regorafenib for the treatment of angiosarcoma. *Eur J Cancer*. 2021;154:201-208. doi:10.1016/j.ejca.2021.06.027
25. Ray-Coquard IL, Domont J, Tresch-Bruneel E, et al. Paclitaxel given once per week with or without bevacizumab in patients with advanced angiosarcoma: a randomized phase II trial. *J Clin Oncol*. 2015;33(25):2797-2802. doi:10.1200/JCO.2015.60.8505
26. Mir O, Watson S, Massard C, Le Cesne A, Benhadji KA, Soria JC. Sequential treatment with NOTCH inhibitor crenigacestat followed by pazopanib in soft tissue sarcoma patients. *Ann Oncol*. 2020;31(12):1782-1784. doi:10.1016/j.annonc.2020.09.003
27. Florou V, Rosenberg AE, Wieder E, et al. Angiosarcoma patients treated with immune checkpoint inhibitors: a case series of seven patients from a single institution. *J Immunother Cancer*. 2019;7(1):213. doi:10.1186/s40425-019-0689-7
28. Petitprez F, de Reyniès A, Keung EZ, et al. B cells are associated with survival and immunotherapy response in sarcoma. *Nature*. 2020;577(7791):556-560. doi:10.1038/s41586-019-1906-8
29. Fujisawa Y, Fujimura T, Matsushita S, et al. The efficacy of eribulin mesylate for patients with cutaneous angiosarcoma previously treated with taxane: a multicentre prospective observational study. *Br J Dermatol*. 2020;183(5):831-839. doi:10.1111/bjd.19042
30. Patel SD, Peterson A, Bartczak A, et al. Primary cardiac angiosarcoma - a review. *Med Sci Monit*. 2014;20:103-109. doi:10.12659/MSM.889875
31. Maréchal R, Bachet JB, Mackey JR, et al. Levels of gemcitabine transport and metabolism proteins predict survival times of patients treated with gemcitabine for pancreatic adenocarcinoma. *Gastroenterology*. 2012;143(3):664-674.e6. doi:10.1053/j.gastro.2012.06.006
32. Vincenzi B, Stacchiotti S, Collini P, et al. Human equilibrative nucleoside transporter 1 gene expression is associated with gemcitabine efficacy in advanced leiomyosarcoma and angiosarcoma. *Br J Cancer*. 2017;117(3):340-346. doi:10.1038/bjc.2017.187

## SUPPORTING INFORMATION

Additional supporting information can be found online in the Supporting Information section at the end of this article.

**How to cite this article:** Watson S, Verret B, Ropert S, et al. Single-agent gemcitabine in patients with advanced, pre-treated angiosarcoma: A multicenter, retrospective study. *Cancer Med*. 2023;12:3160-3166. doi: [10.1002/cam4.5147](https://doi.org/10.1002/cam4.5147)