

Additional file 1

Genetics of the Phenotypic Evolution in Sheep: A Molecular Look at Diversity-driving Genes

Peter Kalds^{1,2}, Shiwei Zhou^{1,3}, Yawei Gao¹, Bei Cai¹, Shuhong Huang¹, Yulin Chen^{1,4*} & Xiaolong Wang^{1,4*}

¹Key Laboratory of Animal Genetics, Breeding and Reproduction of Shaanxi Province, College of Animal Science and Technology, Northwest A&F University, Yangling 712100, China.

²Department of Animal and Poultry Production, Faculty of Environmental Agricultural Sciences, Arish University, El-Arish 45511, Egypt.

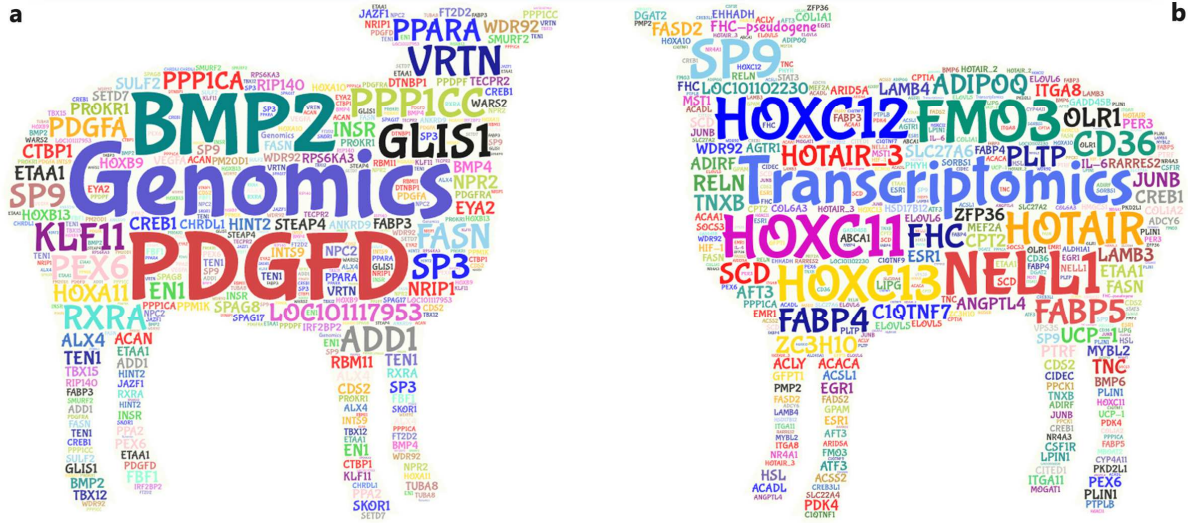
³College of Veterinary Medicine, Northwest A&F University, Yangling 712100, China.

⁴International Joint Agriculture Research Center for Animal Bio-breeding, Ministry of Agriculture and Rural Affairs, Yangling 712100, China.

*Corresponding authors: Yulin Chen chenyulin@nwafu.edu.cn; Xiaolong Wang xiaolongwang@nwafu.edu.cn.

Supplementary figures

High-throughput Sequencing Outcomes for Potential Genes Associated with Sheep Tail Phenotypes



Supplementary fig. S1. High-throughput sequencing outcomes for candidate genes linked with the sheep tail phenotype pattern. Outcomes of genomic (a) and transcriptomic (b) approaches.

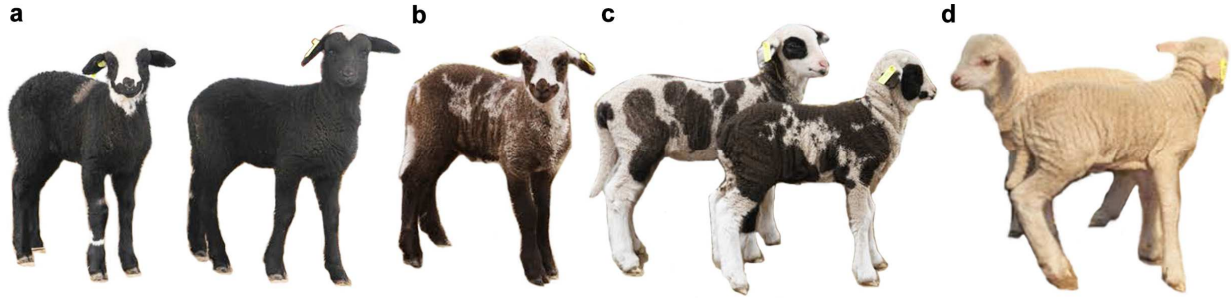


Markings in Shetland Sheep

from the SSBG Colour Census, 1996

Drawn & Compiled by Sue Russo © Shetland Sheep Society 1997, 2004. All rights reserved

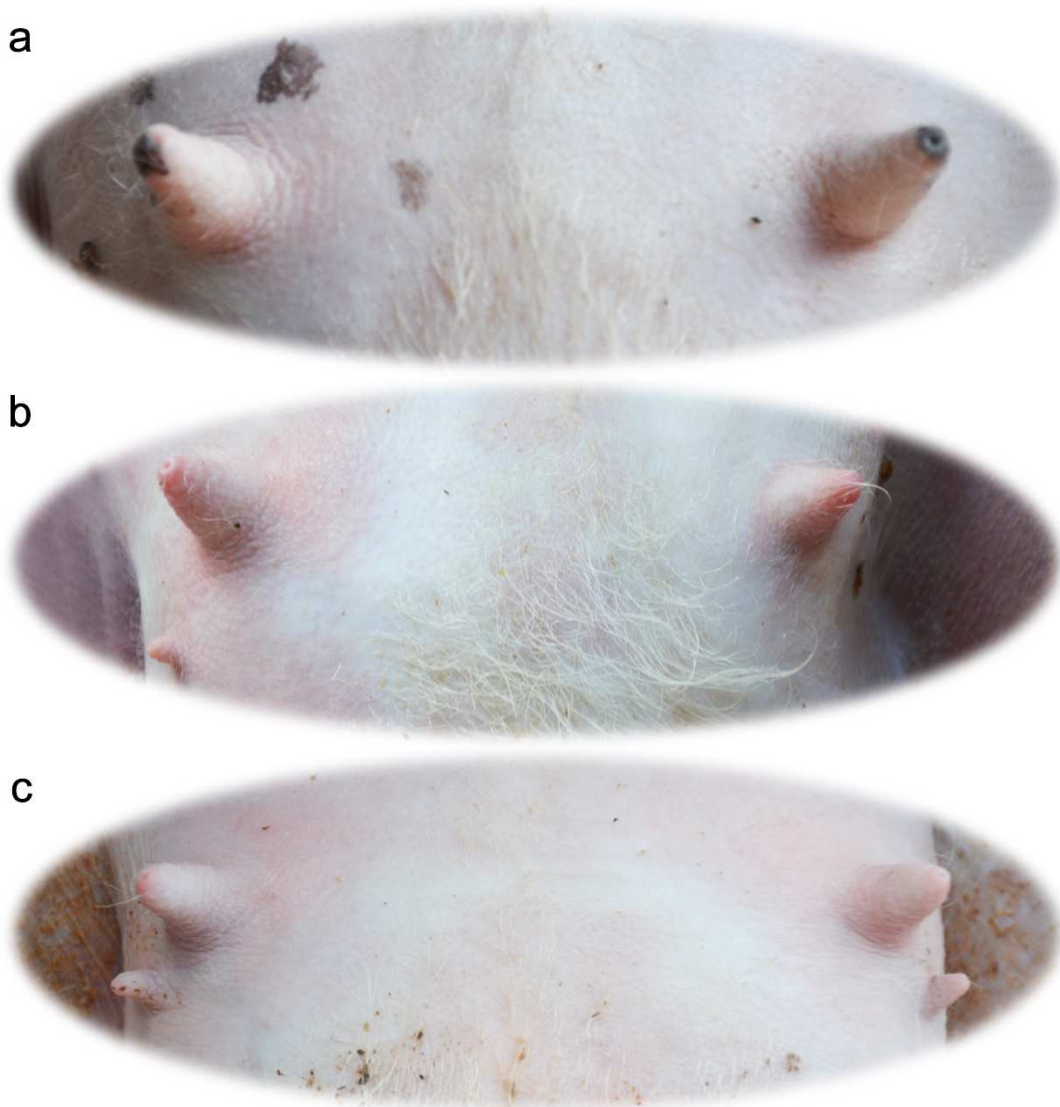
Supplementary fig. S2. An example of coat color variation in sheep. Coat colors and markings in Shetland sheep breed. Poster copyright and published with the consent of the *Shetland Sheep Society* (www.shetland-sheep.org.uk).



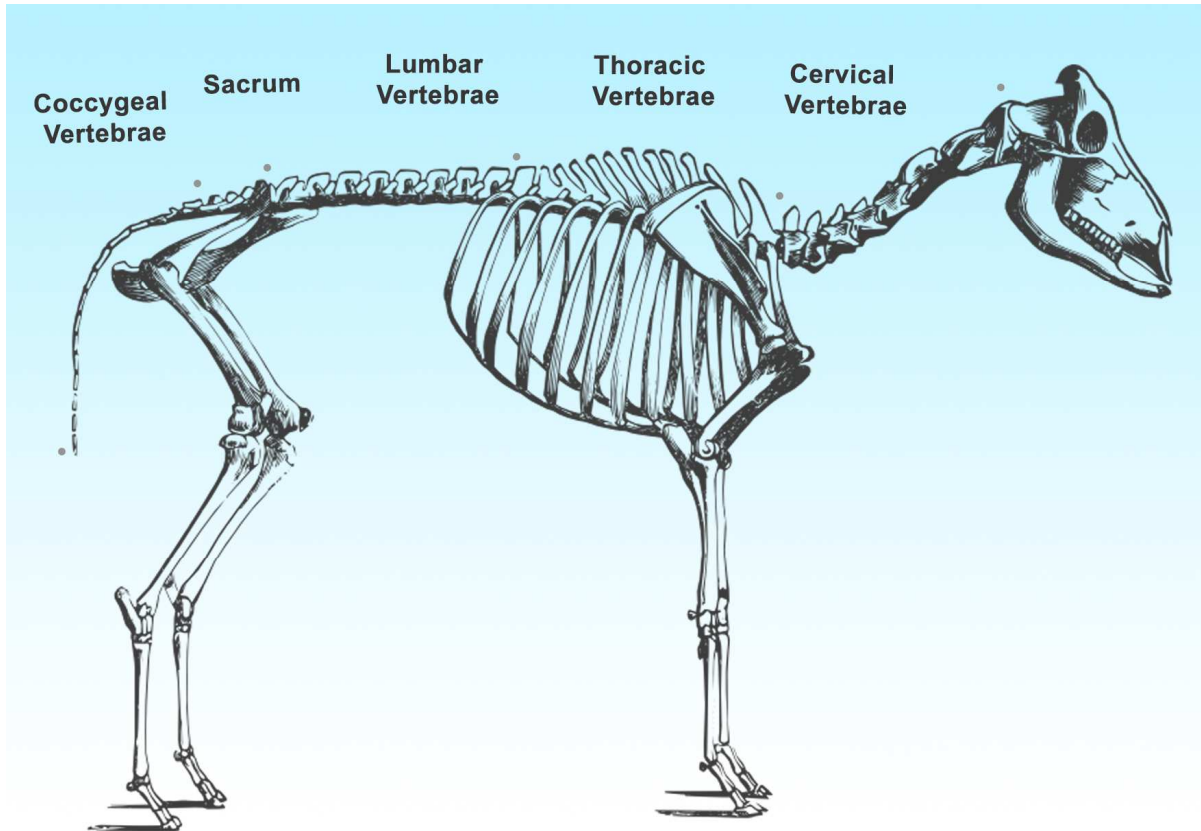
Supplementary fig. S3. CRISPR/Cas9-generated *ASIP* knockout Chinese Merino sheep. (a) Badger-face with black body coat color. (b) Brown coat color with light ventral pigmentation. (c) Black-white spotted coat color. (d) Wild-type phenotype. Figure adapted from Zhang et al. [83].



Supplementary fig. S4. Phenotypic variations of face coat color in sheep. A representative example from Chinese Tan sheep with varied face coat colors, including white, light brown spots, dark brown spots, brown, black spots, black marks, and black. Photos were taken by P.K. at Ningxia Tianyuan Tan Sheep Farm, Hongsibu, China.



Supplementary fig. S5. Phenotypic variations of nipple (teat) number in sheep. A representative example from Chinese Tan sheep, including (a) normal nipple number (a pair of nipples) and supernumerary nipples [(b) with three nipples and (c) four nipples]. Photos were taken by P.K.



Supplementary fig. S6. Location of vertebrae in the sheep skeleton. This includes cervical, thoracic, lumbar, sacral, and coccygeal vertebrae (item source: PNGITEM).