



**HAL**  
open science

## **Tixagevimab-cilgavimab (AZD7442) for the treatment of patients hospitalized with COVID-19 (DisCoVeRy): A phase 3, randomized, double-blind, placebo-controlled trial**

Maya Hites, Clement R Massonnaud, Simon Jamard, Francois Goehringer, Francois Danion, Jean Reignier, Nathalie de Castro, Denis Garot, Eva Larranaga Lapique, Karine Lacombe, et al.

### ► To cite this version:

Maya Hites, Clement R Massonnaud, Simon Jamard, Francois Goehringer, Francois Danion, et al.. Tixagevimab-cilgavimab (AZD7442) for the treatment of patients hospitalized with COVID-19 (DisCoVeRy): A phase 3, randomized, double-blind, placebo-controlled trial. *Journal of Infection*, 2024, 88 (3), pp.106120. 10.1016/j.jinf.2024.106120 . hal-04509759

**HAL Id: hal-04509759**

**<https://hal.science/hal-04509759>**

Submitted on 18 Mar 2024

**HAL** is a multi-disciplinary open access archive for the deposit and dissemination of scientific research documents, whether they are published or not. The documents may come from teaching and research institutions in France or abroad, or from public or private research centers.

L'archive ouverte pluridisciplinaire **HAL**, est destinée au dépôt et à la diffusion de documents scientifiques de niveau recherche, publiés ou non, émanant des établissements d'enseignement et de recherche français ou étrangers, des laboratoires publics ou privés.



Distributed under a Creative Commons Attribution - NonCommercial - NoDerivatives 4.0 International License



## Letter to the Editor

**Tixagevimab-cilgavimab (AZD7442) for the treatment of patients hospitalized with COVID-19 (DisCoVeRy): A phase 3, randomized, double-blind, placebo-controlled trial**


Dear Editor,

We read with great interest the recent article by Kamboj et al., in which they described the risk of developing moderate to severe Coronavirus Disease 2019 (COVID-19) in patients with hematological malignancies receiving tixagevimab-cilgavimab (T-C) during a period in which the dominant circulating variants of Severe Acute Respiratory Syndrome Coronavirus-2 (SARS-CoV-2) were resistant to T-C.<sup>1</sup> The authors highlight the ongoing need to urgently address the mAb treatment gap, particularly for immunocompromised patients. The unmet need is further highlighted by the DisCoVeRy Phase 3, adaptive, multicenter European, randomized, double-blind, superiority trial that evaluated the efficacy and safety of intravenous T-C in SARS-CoV-2 antigenic positive patients (i.e. those with a high SARS-CoV-2 viral load) hospitalized with COVID-19 and followed-up to day 90.

In the ambulatory setting, and while ancestral strains were circulating, the administration of intramuscular T-C to treat SARS-CoV-2 infections significantly reduced the risk of hospitalization and death in patients at risk for disease progression, compared to placebo.<sup>2</sup> In the hospital setting, the double-blinded, placebo-controlled ACTIV-3-TICO trial evaluating T-C in 1417 patients with COVID-19, with > 50% of participants infected with the Delta variant, demonstrated that treatment with T-C was associated with a 30% relative risk reduction in mortality (9% vs. 12%; hazard ratio [HR] 0.70 [95% confidence interval (CI) 0.50–0.97];  $p = 0.032$ ) through day 90.<sup>3</sup> The EU DisCoVeRy placebo-controlled trial (NCT04315948) began enrolling on April 28, 2021, after these trials were initiated (January 28, 2021, and February 10, 2021, respectively) and aimed to confirm efficacy and safety data in hospitalized COVID-19 patients during a later stage of the pandemic when the natural evolution of SARS-CoV-2 strains had led to the emergence of variants of concern (VOC), and mass vaccination campaigns had been ramped up worldwide.<sup>4</sup>

In DisCoVeRy, participants were randomly assigned (1:1) to receive placebo or T-C in addition to standard of care (SoC), not including remdesivir. The primary outcome was the clinical status at day 15 measured by the WHO seven-point ordinal scale. Clinical, virological, immunological and safety endpoints were also assessed.

In the context of *in-vitro* evidence showing loss of neutralization activity against emerging VOC,<sup>5,6</sup> enrollment slowed down until recruitment was stopped on July 1, 2022, before reaching the predetermined targeted sample size of 1240 patients. As shown in Table 1, the antigen positive modified intention-to-treat population (mITT) included 173 participants randomized to T-C ( $n = 91$ ) or placebo ( $n = 82$ ), among whom 91.9% (159/173) needed supplementary oxygen, 19.6% (24/173) were immunocompromised, and

47.4% (82/173) were previously vaccinated against SARS-CoV-2 at inclusion. There was no difference in the distribution of the WHO ordinal scale at day 15 between the two groups (odds ratio (OR) 0.93, 95%CI [0.54–1.61];  $p = 0.81$ ) nor in any clinical, virological or safety secondary endpoints (Fig. 1). In the global mITT population ( $n = 226$ ), neutralization antibody titers were significantly higher in the T-C recipients compared to placebo at day 3 (least-square mean differences (LSMD) 1.44, 95%CI [1.20–1.68];  $p < 10^{-23}$ ) and day 8 (LSMD 0.91, 95%CI [0.64–1.18];  $p < 10^{-8}$ ) and it was greatest for patients infected with a pre-Omicron variant, both at day 3 (LSMD 1.94, 95% CI [1.67–2.20],  $p < 10^{-25}$ ) and day 8 (LSMD 1.17, 95% CI [0.87–1.47],  $p < 10^{-9}$ ), with a significant interaction ( $p < 10^{-7}$  and  $p = 0.01$  at days 3 and 8, respectively). A total of 178 adverse events (AEs), including 90 serious AEs (SAEs) were reported, of which 28 (31.1%) were considered related to the investigational medicinal product. In the T-C group, 51/123 (41.5%) patients had at least one AE, 30/123 (24.4%) had at least one grade 3 or 4 AE, and 28/123 (22.8%) had at least one SAE, against 45/103 (43.7%), 33 (32.0%), and 32 (31.1%) in the control group ( $p = 0.70, 0.18, \text{ and } 0.13$ ), respectively. Among 19 fatal SAEs, none were of cardiac origin. Complete results and all supporting documents are available on medRxiv (doi: [10.1101/2024.02.23.24302586](https://doi.org/10.1101/2024.02.23.24302586)).

Although T-C combination was safe and well-tolerated, showing no excess cardiac events, it did not significantly improve patients' clinical status in the DisCoVeRy study, nor accelerate viral clearance, despite a significant increase in neutralizing antibodies against SARS-CoV-2 at days 3 and 8 compared to placebo. The difference with the ACTIV-3-TICO trial concerning mortality is due to the underpowered nature of the DisCoVeRy trial, and possibly amongst other reasons, the changes in infecting SARS-CoV-2 variants. The Delta variant was the predominant one in both trials, but the DisCoVeRy trial enrolled 40% of patients infected with the Omicron variant compared to none in the ACTIV-3-TICO trial.<sup>3</sup> Indeed, the SARS-CoV-2 Omicron variant and its multiple sub-lineages have proven to be more evasive than the ancestral strain or Delta variant to vaccines and therapeutic mAbs, including T-C, as assessed by *in-vitro* live-virus neutralization assays.<sup>5,6</sup> Infections due to the Omicron variant have overall proven to be less virulent than prior variants, including Delta,<sup>7</sup> however, many patients who did require hospitalization were still at risk of dying, as illustrated by the mortality rate of 15% at day 90 in our trial and the important morbidity described by Kamboj et al.<sup>1</sup>

The early termination of this DisCoVeRy trial, with only 19% of the planned enrollment, is an example of the difficulties to evaluate mAbs in the changing variant landscape of the COVID-19 pandemic. Due to the evolving genomics<sup>4</sup> as well as the increased capacity of the virus for immune escape, vulnerable individuals unable to mount an adequate immune response (e.g. the immunocompromised), remain at risk for severe COVID-19. Consequently, further reflections are needed on how best to evaluate mAbs in the clinical setting to rapidly address this

**Table 1** Baseline characteristics, clinical endpoints, and safety of participants in the antigen positive and global modified intention-to-treat populations, overall and according to the treatment group.

|  | Antigen positive (N = 173) |                        |                  |                | Global (N = 226) |                        |                  |                |
|--|----------------------------|------------------------|------------------|----------------|------------------|------------------------|------------------|----------------|
|  | Overall                    | Tixagevimab-cilgavimab | Placebo          | Effect measure | Overall          | Tixagevimab-cilgavimab | Placebo          | Effect measure |
|  | (N = 173)                  | (N = 91)               | (N = 82)         | (95% CI)       | (N = 226)        | (N = 123)              | (N = 103)        | (95% CI)       |
| <b>Baseline characteristics</b>  |                            |                        |                  |                |                  |                        |                  |                |
| Median age, years  | 66.0 [55.0–79.0]           | 65.0 [56.0–80.0]       | 66.5 [55.0–78.0] |                | 66.0 [53.0–76.0] | 64.0 [53.0–76.0]       | 68.0 [52.0–76.0] |                |
| Sex male,  | 117 (67.6%)                | 56 (61.5%)             | 61 (74.4%)       |                | 155 (68.6%)      | 78 (63.4%)             | 77 (74.8%)       |                |
| Number of comorbidities*   |                            |                        |                  |                |                  |                        |                  |                |
| 0  | 38 (22.0%)                 | 17 (18.7%)             | 21 (25.6%)       |                | 52 (23.0%)       | 28 (22.8%)             | 24 (23.3%)       |                |
| 1  | 49 (28.3%)                 | 26 (28.6%)             | 23 (28.0%)       |                | 71 (31.4%)       | 38 (30.9%)             | 33 (32.0%)       |                |
| 2  | 43 (24.9%)                 | 23 (25.3%)             | 20 (24.4%)       |                | 50 (22.1%)       | 27 (22.0%)             | 23 (22.3%)       |                |
| 3  | 25 (14.5%)                 | 14 (15.4%)             | 11 (13.4%)       |                | 32 (14.2%)       | 18 (14.6%)             | 14 (13.6%)       |                |
| > 3  | 18 (10.4%)                 | 11 (12.1%)             | 7 (8.5%)         |                | 21 (9.3%)        | 12 (9.8%)              | 9 (8.7%)         |                |
| Coexisting condition   |                            |                        |                  |                |                  |                        |                  |                |
| Chronic cardiac disease  | 62 (35.8%)                 | 39 (42.9%)             | 23 (28.0%)       |                | 72 (31.9%)       | 43 (35.0%)             | 29 (28.2%)       |                |
| Obesity (BMI ≥ 30)   | 46 (26.6%)                 | 27 (29.7%)             | 19 (23.2%)       |                | 63 (27.9%)       | 38 (30.9%)             | 25 (24.3%)       |                |
| Diabetes   | 46 (26.6%)                 | 30 (33.0%)             | 16 (19.5%)       |                | 58 (25.7%)       | 37 (30.1%)             | 21 (20.4%)       |                |
| Current smoker   | 13 (48.1%)                 | 6 (42.9%)              | 7 (53.8%)        |                | 15 (48.4%)       | 7 (46.7%)              | 8 (50.0%)        |                |
| Chronic pulmonary disease (including asthma)   | 43 (24.9%)                 | 22 (24.2%)             | 21 (25.6%)       |                | 53 (23.5%)       | 27 (22.0%)             | 26 (25.2%)       |                |
| Active cancer (including hematological malignancy)   | 23 (13.3%)                 | 9 (9.9%)               | 14 (17.1%)       |                | 30 (13.3%)       | 12 (9.8%)              | 18 (17.5%)       |                |
| Median days from symptoms onset and random assignment <sup>†,‡</sup>   | 7.0 [5.0–9.0]              | 7.0 [6.0–9.0]          | 7.0 [5.0–9.0]    |                | 7.0 [6.0–9.0]    | 8.0 [6.0–9.0]          | 7.0 [5.0–9.0]    |                |
| NEWS2 score*   | 7.0 [5.0–9.0]              | 7.0 [5.0–8.0]          | 7.0 [5.0–9.0]    |                | 7.0 [5.0–9.0]    | 7.0 [5.0–8.0]          | 6.0 [5.0–9.0]    |                |
| Clinical status  |                            |                        |                  |                |                  |                        |                  |                |
| 3. Hospitalized, not requiring supplemental oxygen   | 7 (4.0%)                   | 5 (5.5%)               | 2 (2.4%)         |                | 9 (4.0%)         | 6 (4.9%)               | 3 (2.9%)         |                |
| 4. Hospitalized, requiring supplemental oxygen   | 141 (81.5%)                | 71 (78.0%)             | 70 (85.4%)       |                | 179 (79.2%)      | 93 (75.6%)             | 86 (83.5%)       |                |
| 5. Hospitalized, on non-invasive ventilation or high flow oxygen devices   | 25 (14.5%)                 | 15 (16.5%)             | 10 (12.2%)       |                | 38 (16.8%)       | 24 (19.5%)             | 14 (13.6%)       |                |
| Randomization site   |                            |                        |                  |                |                  |                        |                  |                |
| Intensive care unit  | 21 (12.1%)                 | 15 (16.5%)             | 6 (7.3%)         |                | 32 (14.2%)       | 21 (17.1%)             | 11 (10.7%)       |                |
| Conventional unit  | 152 (87.9%)                | 76 (83.5%)             | 76 (92.7%)       |                | 194 (85.8%)      | 102 (82.9%)            | 92 (89.3%)       |                |
| Vaccination initiation (partly or fully)   | 82 (47.4%)                 | 43 (47.3%)             | 39 (47.6%)       |                | 102 (45.1%)      | 56 (45.5%)             | 46 (44.7%)       |                |
| Serology*  |                            |                        |                  |                |                  |                        |                  |                |
| Negative (anti-N antibodies - and anti-S RBD antibodies -)   | 69 (40.4%)                 | 40 (44.4%)             | 29 (35.8%)       |                | 76 (34.4%)       | 44 (36.4%)             | 32 (32.0%)       |                |
| Positive (anti-N antibodies + or anti-S RBD antibodies +)  | 102 (59.6%)                | 50 (55.6%)             | 52 (64.2%)       |                | 145 (65.6%)      | 77 (63.6%)             | 68 (68.0%)       |                |
| Variant Omicron on day 1 (imputed) <sup>†</sup>  |                            |                        |                  |                |                  |                        |                  |                |
| Pre-Omicron  | 99 (57.2%)                 | 52 (57.1%)             | 47 (57.3%)       |                | 133 (58.8%)      | 70 (56.9%)             | 63 (61.2%)       |                |
| Omicron BA1  | 44 (25.4%)                 | 25 (27.5%)             | 19 (23.2%)       |                | 53 (23.5%)       | 32 (26.0%)             | 21 (20.4%)       |                |
| Omicron BA2/5  | 20 (11.6%)                 | 10 (11.0%)             | 10 (12.2%)       |                | 22 (9.7%)        | 11 (8.9%)              | 11 (10.7%)       |                |
| Unknown  | 10 (5.8%)                  | 4 (4.4%)               | 6 (7.3%)         |                | 18 (8.0%)        | 10 (8.1%)              | 8 (7.8%)         |                |
| Median normalized viral load in nasopharyngeal swabs at baseline, log <sub>10</sub> copies per 10,000 cells <sup>‡</sup> | 4.4 [3.3–5.4]              | 4.4 [3.4–5.3]          | 4.4 [3.3–5.6]    |                | 4.0 [2.5–5.2]    | 3.9 [2.4–5.1]          | 4.1 [2.7–5.3]    |                |

(continued on next page)

Table 1 (continued)

|  | Antigen positive (N = 173) |                        |                  | Global (N = 226)                     |                        |                                     |
|--|----------------------------|------------------------|------------------|--------------------------------------|------------------------|-------------------------------------|
|  | Overall                    | Tixagevimab-cilgavimab | Placebo          | Overall                              | Tixagevimab-cilgavimab | Placebo                             |
|  | (N = 173)                  | (N = 91)               | (N = 82)         | (N = 226)                            | (N = 123)              | (N = 103)                           |
| <b>Clinical endpoints</b>  |                            |                        |                  |                                      |                        |                                     |
| 7-point ordinal scale at day 15  |                            |                        |                  |                                      |                        |                                     |
| 1. Not hospitalized, no limitations on activities                        | 35 (20.2%)                 | 15 (16.5%)             | 20 (24.4%)       | 48 (21.2%)                           | 20 (16.3%)             | 28 (27.2%)                          |
| 2. Not hospitalized, limitation on activities                            | 77 (44.5%)                 | 45 (49.5%)             | 32 (39.0%)       | 104 (46.0%)                          | 63 (51.2%)             | 41 (39.8%)                          |
| 3. Hospitalized, not requiring supplemental oxygen                       | 18 (10.4%)                 | 9 (9.9%)               | 9 (11.0%)        | 24 (10.6%)                           | 14 (11.4%)             | 10 (9.7%)                           |
| 4. Hospitalized, requiring supplemental oxygen                           | 9 (5.2%)                   | 7 (7.7%)               | 2 (2.4%)         | 13 (5.8%)                            | 10 (8.1%)              | 3 (2.9%)                            |
| 5. Hospitalized, on non-invasive ventilation or high flow oxygen devices | 6 (3.5%)                   | 2 (2.2%)               | 4 (4.9%)         | 7 (3.1%)                             | 2 (1.6%)               | 5 (4.9%)                            |
| 6. Hospitalized, on invasive mechanical ventilation or ECMO              | 11 (6.4%)                  | 5 (5.5%)               | 6 (7.3%)         | 12 (5.3%)                            | 6 (4.9%)               | 6 (5.8%)                            |
| 7. Death   | 17 (9.8%)                  | 8 (8.8%)               | 9 (11.0%)        | 18 (8.0%)                            | 8 (6.5%)               | 10 (9.7%)                           |
| Time to sustained recovery through day 90 (days)                         | 22.0 [19.0–27.0]           | 22.0 [19.0–27.5]       | 21.0 [18.0–27.0] | 21.0 [18.0–27.0]                     | 22.0 [19.0–27.5]       | 21.0 [18.0–27.0]                    |
| Days to hospital discharge before day 90                                 | 8.0 [6.0–13.0]             | 8.0 [6.0–11.0]         | 9.0 [5.0–13.0]   | 8.0 [5.0–13.0]                       | 8.0 [5.0–12.0]         | 8.0 [5.0–13.0]                      |
| Mortality rate at day 90   | 26 (15.0%)                 | 12 (13.2%)             | 14 (17.1%)       | 28 (12.4%)                           | 12 (9.8%)              | 16 (15.5%)                          |
| <b>Safety</b>  |                            |                        |                  |                                      |                        |                                     |
| Number of patients with at least one adverse event                       |                            |                        |                  |                                      |                        |                                     |
| Any adverse events   |                            |                        |                  | 96 (42.5%)                           | 51 (41.5%)             | 45 (43.7%)                          |
| Any grade 1 adverse events   |                            |                        |                  | 20 (8.8%)                            | 12 (9.8%)              | 8 (7.8%)                            |
| Any grade 2 adverse events   |                            |                        |                  | 29 (12.8%)                           | 18 (14.6%)             | 11 (10.7%)                          |
| Any grade 3 adverse events   |                            |                        |                  | 34 (15.0%)                           | 18 (14.6%)             | 16 (15.5%)                          |
| Any grade 4 adverse events   |                            |                        |                  | 35 (15.5%)                           | 14 (11.4%)             | 21 (20.4%)                          |
| Any grade 1 and 2 adverse events   |                            |                        |                  | 43 (19.0%)                           | 25 (20.3%)             | 18 (17.5%)                          |
| Any grade 3 and 4 adverse events   |                            |                        |                  | 63 (27.9%)                           | 30 (24.4%)             | 33 (32.0%)                          |
| Number of patients with at least one serious adverse event               |                            |                        |                  |                                      |                        |                                     |
| Any serious adverse events   |                            |                        |                  | 60 (26.5%)                           | 28 (22.8%)             | 32 (31.1%)                          |
| Any serious adverse events leading to outcome of death                   |                            |                        |                  | 19 (8.4%)                            | 9 (7.3%)               | 10 (9.7%)                           |
| Effect measure   |                            |                        |                  |                                      |                        |                                     |
|  |                            |                        |                  | (95% CI)                             |                        | (95% CI)                            |
|  |                            |                        |                  | OR = 0.93 (0.54–1.61)<br>[p = 0.81]  |                        | OR = 0.85 (0.52–1.37)<br>[p = 0.50] |
|  |                            |                        |                  | HR = 0.98 (0.71–1.36)<br>[p = 0.92]  |                        | HR = 1.01 (0.77–1.34)<br>[p = 0.93] |
|  |                            |                        |                  | HR = 1.06 (0.78–1.45)<br>[p = 0.70]  |                        | HR = 1.10 (0.84–1.43)<br>[p = 0.49] |
|  |                            |                        |                  | OR = 0.773 (0.31–1.72)<br>[p = 0.47] |                        | OR = 0.56 (0.25–1.28)<br>[p = 0.17] |
|  |                            |                        |                  |                                      |                        | OR = 0.90 (0.53–1.54)<br>[p = 0.70] |
|  |                            |                        |                  |                                      |                        | OR = 0.67 (0.37–1.20)<br>[p = 0.18] |
|  |                            |                        |                  |                                      |                        | OR = 0.63 (0.35–1.15)<br>[p = 0.13] |

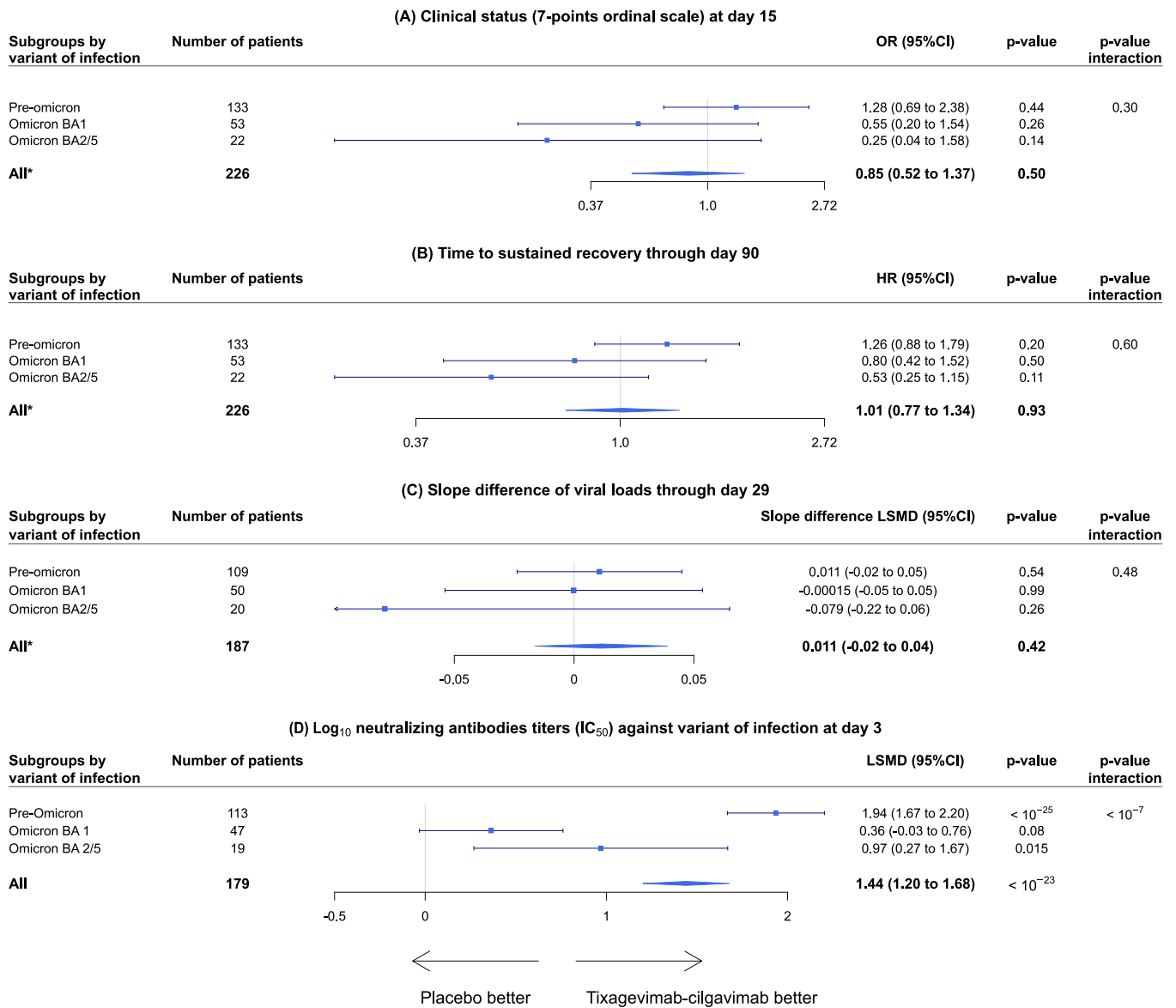
Data are median [IQR] or n (%).

Analyses were stratified on the vaccination status at randomization and adjusted effect measures are reported in the table. For the ordinal scale results, an odds ratio above 1 is in the direction of tixagevimab-cilgavimab being better than placebo. For time to event analyses, a hazard ratio above 1 is in the direction of tixagevimab-cilgavimab being better than placebo. Estimates are reported with their 95% confidence interval. As per the definition in the protocol, adverse events and serious adverse events do not include disease-related events. CI: confidence interval; OR: odds ratio; HR: hazard ratio; BMI: body mass index; ECMO: extracorporeal membrane oxygenation.

\* Denotes variables with missing data. The number of missing data is presented for the antigen positive/the global mITT for each variable, respectively. Data on smoking status (current) were missing in 3/3 participants; data on delay between first laboratory-confirmed SARS-CoV-2 infection and admission date at facility were missing in 1/1 participant; data on delay between first laboratory-confirmed SARS-CoV-2 infection and randomization were missing in 1/1 participant; data on serology test were missing on 2/5 participants; data on variant sequencing were missing in 35/71 participants; data on body weight were missing on 10/11 participants; data on NEWS2 score were missing on 16/20 participants.

\* Only conditions with a relative frequency greater than 10% are displayed in the table.

† Undetectable viral load values (i.e. values < 1 log<sub>10</sub> copies/10 000 cells) were imputed to 0.7 log<sub>10</sub> copies/10 000 cells.



**Fig. 1.** Forest plots of subgroup analyses according to the variant of infection, for the (A) clinical status (7-points ordinal scale) at day 15, (B) time to sustained recovery through day 90, (C) slope difference of viral loads through day 29, (D) log<sub>10</sub> neutralizing antibody titers against variant of infection at day 3, in patients from the global modified intention-to-treat population.

urgent unmet need by bringing new therapeutic options to patients, particularly immunocompromised, while ensuring their safety. Novel approaches for evaluating mAbs include immuno-bridging trials, where humoral and/or cellular immune parameters are evaluated in a controlled trial to establish whether an intervention is effective<sup>8</sup> and the adoption of a global surveillance system with criteria for *in-vitro* evaluation of antiviral susceptibility correlated to clinical data.<sup>9</sup> Modeling antiviral effects while accounting for vaccination status, SARS-CoV-2 antibody levels, infecting viral strains, and other parameters, may provide better insight into antiviral efficacy of mAbs, as we have previously shown with remdesivir.<sup>10</sup>

**Declaration of Competing Interest**

M.H. reports grants from The Belgian Center for Knowledge (KCE), the Fonds Erasme-COVID-Université Libre de Bruxelles and the EU-Horizon program, for the submitted work; and has received support for attending meetings from Pfizer; support for participation

on an advisory board for therapeutics on COVID-19; and support for leadership for the Belgian guidelines on therapeutics for COVID-19 and acting as a treasurer for the Belgian Society of Clinical Microbiology and Infectious Diseases. R.G. reports consulting fees from Celgene, Novartis, Roche, Bristol Myers Squibb, Takeda, Abbvie, AstraZeneca, Janssen, Merck Sharp & Dohme, Merck, Gilead, and Daiichi Sankyo; lecture fees from Celgene, Roche, Merck, Takeda, AstraZeneca, Novartis, Amgen, Bristol Myers Squibb, Merck Sharp & Dohme, Sandoz, Abbvie, Gilead, and Daiichi Sankyo; support for attending meetings from Roche, Amgen, Janssen, AstraZeneca, Novartis, Merck Sharp & Dohme, Celgene, Gilead, Bristol Myers Squibb, Abbvie, and Daiichi Sankyo; participation in a Data Safety and Monitoring Board for Celgene, Novartis, Roche, Bristol Myers Squibb, Takeda, Abbvie, AstraZeneca, Janssen, Merck Sharp & Dohme, Merck, Gilead, and Daiichi Sankyo; research grants from Celgene, Roche, Merck, Takeda, AstraZeneca, Novartis, Amgen, Bristol Myers Squibb, Merck Sharp & Dohme, Sandoz, Abbvie, Gilead, and Daiichi Sankyo. J.-A.P. reports consulting fees from Pfizer, Merck Sharp & Dohme, and Janssen-Cilag; lecture fees from Pfizer; and support for

attending meetings from Pfizer. D.C. reports grants and lecture fees from Janssen and lecture fees from Gilead, outside the submitted work. C.B. reports participation in a Data Safety and Monitoring Board for 4Living Biotech; and consulting fees from Da Volterra and Mylan Pharmaceuticals, outside the submitted work. F.M. reports grants and consulting fees from Da Volterra, grants from Sanofi, and consulting fees from Ipsen, outside the submitted work. All other authors declare no competing interests.

## Acknowledgements

This work received funding from several sources: the European Commission (EU-Response, Grant 101015736), the DIM One Health Île-de-France (R20117HD) and Astra-Zeneca. We thank all participants who consented to enroll in the trial, as well as all study and site staff whose indispensable assistance made the conduct of the DisCoVeRy trial possible (all listed in the appendix, pp 27–36, available on medRxiv, doi: [10.1101/2024.02.23.24302586](https://doi.org/10.1101/2024.02.23.24302586)).

## References

- Kamboj M, Laracy JC, Usiak S, Babady NE, Yan J, Seo SK. *Outcomes of hematologic malignancy patients with SARS-CoV-2 breakthrough infections after tixagevimab-cilgavimab during community transmission of monoclonal antibody resistant variants.* *J Infect* 2023 Sep;**87**(3):282–5.
- Montgomery H, Hobbs FDR, Padilla F, Arbetter D, Templeton A, Seegobin S, et al. *Efficacy and safety of intramuscular administration of tixagevimab–cilgavimab for early outpatient treatment of COVID-19 (TACKLE): a phase 3, randomised, double-blind, placebo-controlled trial.* *Lancet Respir Med* 2022;**10**(10):985–96.
- Holland TL, Ginde AA, Paredes R, Murray TA, Engen N, Grandits G, et al. *Tixagevimab–cilgavimab for treatment of patients hospitalised with COVID-19: a randomised, double-blind, phase 3 trial.* *Lancet Respir Med* 2022;**10**(10):972–84.
- Carabelli AM, Peacock TP, Thorne LG, Harvey WT, Hughes J, COVID-19 Genomics UK Consortium, et al. *SARS-CoV-2 variant biology: immune escape, transmission and fitness.* *Nat Rev Microbiol* 2023 [cited November 3, 2023]; Available from: (<https://www.nature.com/articles/s41579-022-00841-7>).
- Touret F, Giraud E, Bourret J, Donati F, Tran-Rajau J, Chiaravalli J, et al. *Enhanced neutralization escape to therapeutic monoclonal antibodies by SARS-CoV-2 omicron sublineages.* *iScience* 2023;**26**(4):106413.
- Takashita E, Yamayoshi S, Simon V, Van Bakel H, Sordillo EM, Pekosz A, et al. *Efficacy of antibodies and antiviral drugs against Omicron BA.2.12.1, BA.4, and BA.5 subvariants.* *N Engl J Med* 2022;**387**(5):468–70.
- Fan Y, Li X, Zhang L, Wan S, Zhang L, Zhou F. *SARS-CoV-2 Omicron variant: recent progress and future perspectives.* *Signal Transduct Target Ther* 2022;**7**(1):141.
- European Medical Agency. Summary report of the Joint EMA-FDA workshop on the efficacy of monoclonal antibodies in the context of rapidly evolving SARS-CoV-2 variants [Internet]. [cited November 3, 2023]. Available from: (<https://www.ema.europa.eu/en/documents/report/summary-report-joint-ema-fdaworkshop-efficacy-monoclonal-antibodies-context-rapidly-evolving-sars-en.pdf>).
- European Centre for Disease Prevention and Control. SARS-CoV-2 variant mutations conferring reduced susceptibility to antiviral drugs and monoclonal antibodies: a non systematic literature review for surveillance purposes. [Internet]. LU: Publications Office; 2023 [cited November 3, 2023]. Available from: (<https://data.europa.eu/doi/10.2900/192733>).
- Lingas G, Néant N, Gaymard A, Belhadi D, Peytavin G, Hites M, et al. *Effect of remdesivir on viral dynamics in COVID-19 hospitalized patients: a modelling analysis of the randomized, controlled, open-label DisCoVeRy trial.* *J Antimicrob Chemother* 2022;**77**(5):1404–12.

Maya Hites <sup>\*1</sup>, Eva Larranaga Lapique  
Clinic of Infectious Diseases, Hôpital Universitaire de Bruxelles (HUB),  
Université Libre de Bruxelles, Brussels, Belgium

Clément R. Massonnaud <sup>2</sup>, Drifa Belhadi  
Université Paris Cité, Inserm, IAME, F-75018 Paris, France  
AP-HP, Hôpital Bichat, Département d'Épidémiologie, Biostatistique et  
Recherche Clinique, F-75018 Paris, France

Simon Jamard  
Service de Maladies Infectieuses Et Tropicales (SMIT), Centre Hospitalier  
Universitaire de Tours, 37044 Tours, France

François Goehringier  
Université de Lorraine, CHRU de Nancy, Service des Maladies  
Infectieuses et Tropicales, F-54000 Nancy, France

François Danion  
Hôpitaux Universitaires de Strasbourg, Département de maladies  
infectieuses et tropicales, F-67091 Strasbourg, France

Jean Reignier  
CHU de Nantes, Service de Médecine Intensive et Réanimation,  
Université de Nantes, F-44093 Nantes, France

Nathalie de Castro  
Département des Maladies Infectieuses et Tropicales, GH Saint-Louis/  
Lariboisière-Fernand Widal, Université de Paris Cité, INSERM U 944,  
Paris, France

Denis Garot  
CHRU Tours, Service de Médecine Intensive Réanimation, F-37044 Tours,  
France

Karine Lacombe  
Sorbonne Université, Inserm, Institut Pierre-Louis d'Épidémiologie et de  
Santé Publique, F-75013 Paris, France  
APHP, Hôpital Saint-Antoine, Service de maladies infectieuses et  
tropicales, F-75012 Paris, France

Violaine Tolsma  
Centre Hospitalier Annecy Genevois, Service des Maladies Infectieuses et  
Tropicales, F-74374 Annecy, France

Emmanuel Faure  
Université de Lille, CNRS, Inserm, CHU Lille, Institut Pasteur de Lille,  
U1019 - UMR 9017 - CIIL - Center for Infection and Immunity of Lille, F-  
59000 Lille, France

Denis Malvy  
Department of Infectious Diseases and Tropical Medicine, CHU  
Bordeaux, Bordeaux, France

Thérèse Staub  
Centre hospitalier de Luxembourg, Service des maladies infectieuses, L-  
1210 Luxembourg, Luxembourg

Johan Courjon  
Université Côte d'Azur, CHU Nice, Nice, France, Infectious Disease Unit,  
Nice, France

France Cazenave-Roblot  
Département des Maladies Infectieuses et Tropicales, CHU de Poitiers,  
INSERM U1070, Poitiers, France

Anne Ma Dyrhol Riise  
Department of Infectious Diseases, Oslo University Hospital, 0424 Oslo,  
Norway

Paul Leturnier  
Department of Infectious Diseases, Hôtel-Dieu University Hospital,  
University Hospital of Nantes, Nantes, France

Guillaume Martin-Blondel  
CHU de Toulouse, Service des maladies infectieuses et Tropicales, F-  
31320 Toulouse, France  
Institut Toulousain des Maladies Infectieuses et Inflammatoires  
(Infinity) INSERM UMR1291 - CNRS UMR5051 - Université Toulouse III,  
F-31320 Toulouse, France

Claire Roger  
Department of Anesthesiology, Critical Care Pain, and Emergency  
Medicine, Nimes University Hospital, Nimes, France



- Karolina Akinosoglou  
Department of Internal Medicine and Infectious Diseases, University  
General Hospital of Patras, Patras, Greece
- Vincent Le Moing  
CHU de Montpellier, Service des Maladies Infectieuses et Tropicales, F-  
34295 Montpellier, France
- Lionel Piroth  
CHU de Dijon, Département de Maladies Infectieuses, F-21000, Dijon,  
France  
Université Bourgogne Franche-Comté, CIC 1432, INSERM, F-21000,  
Dijon, France
- Pierre Sellier  
Infectious Diseases Department, Lariboisière Hospital, AP-HP, Paris,  
France
- Xavier Lescure  
Université Paris Cité, Inserm, IAME, F-75018 Paris, France  
AP-HP, Hôpital Bichat, Service de Maladies Infectieuses et Tropicales, F-  
75018 Paris, France
- Marius Trøseid  
Research Institute of Internal Medicine, Division of Surgery,  
Inflammatory Diseases and Transplantation, Oslo University Hospital  
Rikshospitalet, Oslo, Norway
- Philippe Clevenbergh  
Infectious Diseases Clinic, CHU Brugmann, ULB, Brussels, Belgium
- Olav Dalgard  
Department of Infectious Diseases, Division of Medicine, Akershus  
University Hospital, Lørenskog, Norway  
Institute for Clinical Medicine, University of Oslo, Oslo, Norway
- Sébastien Gallien  
APHP, Hôpital Henri Mondor, Département de maladies infectieuses, F-  
94000 Créteil, France  
INSERM U955, Team 16, IMRB Créteil, Créteil, France
- Marie Gousseff  
Maladies infectieuses, Centre Hospitalier Bretagne-Atlantique, Vannes,  
France
- Paul Loubet  
Infectious and Tropical Diseases Department, Nimes University Hospital,  
Nimes, France  
VBIC, INSERM U1047, University of Montpellier, Nimes, France
- Fanny Vardon-Bounes  
CHU de Toulouse, Département d'anesthésie et de soins intensifs, F-  
31300 Toulouse, France  
Université Toulouse 3 Paul Sabatier, Inserm U1297, F-31300 Toulouse,  
France
- Clotilde Visée  
Department of Infectious Disease, Centre Hospitalier Régional Mons-  
Hainaut/Groupe Jolimont, Mons Belgium/Groupe Helora, Mons, Belgium
- Leila Belkhir  
Department of Internal Medicine and Infectious Diseases, Cliniques  
universitaires Saint-Luc, Brussels, Belgium
- Élisabeth Botelho-Nevers  
CHU de Saint-Etienne, Service d'Infectiologie, F-42055 Saint-Etienne,  
France  
Université Jean Monnet, Université Claude Bernard Lyon 1, GIMAP, CIRI,  
INSERM U1111, CNRS UMR5308, ENS Lyon, F-42023 Saint-Etienne,  
France  
CIC 1408, INSERM, F, 42055 Saint-Etienne, France
- André Cabié  
PCCEI, Univ Montpellier, Univ Antilles, Inserm, EFS, F-34394 Montpellier,  
France  
CHU de Martinique, Service des maladies infectieuses et tropicales,  
Inserm CIC1424, F-97200 Fort de France, France
- Anastasia Kotanidou  
First Department of Critical Care Medicine and Pulmonary Services,  
Evangelismos Hospital, National and Kapodistrian University of Athens  
Medical School, 45-47 Ipsilantou Street, 10676 Athens, Greece
- Fanny Lanternier  
Infectious Diseases Unit, Necker-Enfants Malades University Hospital,  
AP-HP, Paris, France
- Elisabeth Rouveix-Nordon  
AP-HP, Hôpital Ambroise-Paré, Service de Maladies Infectieuses et  
Tropicales, Boulogne-Billancourt, France
- Susana Silva  
EPIUnit - Instituto de Saúde Pública, Universidade do Porto, Rua das  
Taipas, no 135, 4050-600 Porto, Portugal
- Guillaume Thiery  
CHU Saint-Etienne, Hopital Nord, Medical Intensive Care Unit, Saint-  
Priest-En-Jarez, France
- Pascal Poinard  
Groupe de Recherche en Infectiologie Clinique CIC-1406, Inserm -  
CHUGA - Université Grenoble Alpes, Grenoble, France  
Univ. Grenoble Alpes, CEA, CNRS, Institut de Biologie Structurale (IBS),  
Grenoble, France  
Laboratoire de Virologie, Center Hospitalier Universitaire Grenoble-  
Alpes, Grenoble, France
- Guislaine Carcelain  
Immunology Department, Robert Debré Hospital, Assistance Publique  
Hôpitaux de Paris, Paris, France  
Université Paris Cité, INSERM U976, Paris, France
- Alpha Diallo, Noémie Mercier, Vida Terzic  
ANRS | Maladies Infectieuses Emergentes, Paris, France
- Maude Bouscambert-Duchamp, Alexandre Gaymard  
Hospices Civils de Lyon, Laboratoire de Virologie, Institut des Agents  
Infectieux de Lyon, Centre National de Référence des virus respiratoires  
France Sud, F-69317 Lyon, France  
Université Claude Bernard Lyon 1, Virpath, CIRI, INSERM U1111, CNRS  
UMR5308, ENS Lyon, F-69372 Lyon, France
- Mary-Anne Trabaud  
Hôpital de la Croix-Rousse, Hospices Civils de Lyon, Lyon, France
- Grégory Destras, Laurence Josset  
Hospices Civils de Lyon, Laboratoire de Virologie, Institut des Agents  
Infectieux de Lyon, Centre National de Référence des virus respiratoires  
France Sud, F-69317 Lyon, France
- Nicolas Billard, Thi-Hong-Lien Han  
AP-HP, Hôpital Bichat, Département d'Épidémiologie, Biostatistique et  
Recherche Clinique, F-75018 Paris, France
- Jérémy Guedj  
Université Paris Cité, Inserm, IAME, F-75018 Paris, France
- Sandrine Couffin-Cadiergues  
Institut de santé publique, Pôle recherche clinique, INSERM, Paris,  
France
- Aline Dechanet  
AP-HP, Hôpital Bichat, Unité de recherche clinique, F-75018 Paris, France

- Christelle Delmas, H el ene Esperou  
Institut de sant e publique, P ole recherche clinique, INSERM, Paris,  
France
- Claire Fougerou-Leurent  
CHU de Rennes, Universit e Rennes 1, Inserm CIC 1414, F-35000 Rennes,  
France
- Soizic Le Mestre  
ANRS | Maladies Infectieuses Emergentes, Paris, France
- Anabelle M etois  
AP-HP, H opital Bichat, Unit e de recherche clinique, F-75018 Paris, France
- Marion Noret  
Renarci, R eseau National De Recherche Clinique En Infectiologie, Paris,  
France
- Isabelle Bally, Sebasti an Dergan-Dylon  
Univ. Grenoble Alpes, CEA, CNRS, Institut de Biologie Structurale (IBS),  
Grenoble, France
- Sarah Tubiana  
Universit e Paris Cit e, Inserm, IAME, F-75018 Paris, France  
AP-HP, H opital Bichat, Centre de ressources biologiques, F-75018 Paris,  
France
- Ouifiya Kalif  
AP-HP, H opital Bichat, Centre de ressources biologiques, F-75018 Paris,  
France
- Nathalie Bergaud, Benjamin Leveau  
Hospices Civils de Lyon, Lyon, France
- Joe Eustace  
University College Cork, Cork, Ireland
- Richard Greil  
Department of Internal Medicine III with Haematology, Medical  
Oncology, Haemostaseology, Infectiology and Rheumatology, Oncologic  
Center, Salzburg Cancer Research Institute - Laboratory for  
Immunological and Molecular Cancer Research (SCRI-LIMCR),  
Paracelsus Medical University Salzburg, 5020 Salzburg, Austria  
Cancer Cluster Salzburg, 5020 Salzburg, Austria  
AGMT, 5020 Salzburg, Austria
- Edit Hajdu  
Department of Internal Medicine Infectiology Unit, Albert Szent-Gy orgyi  
Health Centre, University of Szeged,  Allom as Street 1-3, 6725 Szeged,  
Hungary
- Monika Halanova  
LF UPJŠ - Pavol Jozef Šaf arik University in Košice Faculty of Medicine,  
Košice, Slovakia
- Jose-Artur Paiva  
Centro Hospitalar S ao Jo o, Emergency and Intensive Care Department,  
Porto, Portugal  
Universidade do Porto, Faculty of Medicine, Porto, Portugal
- Anna Piekarska  
Department of Infectious Diseases and Hepatology, Medical University  
of Ł dź, Ł dź, Poland
- Jesus Rodriguez Ba no  
Infectious Diseases and Microbiology Division, Hospital Universitario  
Virgen Macarena, Sevilla, Spain
- Kristian Tonby  
Department of Infectious Diseases, Oslo University Hospital, 0424 Oslo,  
Norway
- Milan Troj anek  
Department of Infectious Diseases, University Hospital Bulovka,  
Bud nova 2, 180 81, Prague, Czech Republic
- Sotirios Tsiodras  
Fourth Department of Internal Medicine, Attikon University Hospital,  
Athens Medical School, National and Kapodistrian University of Athens,  
12462 Athens, Greece
- Serhat Unal  
Department of Infectious Diseases, Hacettepe University Faculty of  
Medicine, Ankara, Turkey
- Charles Burdet  
Universit e Paris Cit e, Inserm, IAME, F-75018 Paris, France  
AP-HP, H opital Bichat, D epartement d' pid miologie, Biostatistique et  
Recherche Clinique, F-75018 Paris, France
- Dominique Costagliola  
Sorbonne Universit e, Inserm, Institut Pierre-Louis d' pid miologie et de  
Sant e Publique, F-75013 Paris, France
- Yazdan Yazdanpanah  
Universit e Paris Cit e, Inserm, IAME, F-75018 Paris, France  
AP-HP, H opital Bichat, Service de Maladies Infectieuses et Tropicales, F-  
75018 Paris, France
- Nathan Peiffer-Smadja  
Universit e Paris Cit e, Inserm, IAME, F-75018 Paris, France  
AP-HP, H opital Bichat, Service de Maladies Infectieuses et Tropicales, F-  
75018 Paris, France  
National Institute for Health Research, Health Protection Research Unit  
in Healthcare Associated Infections and Antimicrobial Resistance,  
Imperial College London, London, UK
- France Mentr e<sup>3</sup>  
Universit e Paris Cit e, Inserm, IAME, F-75018 Paris, France  
AP-HP, H opital Bichat, D epartement d' pid miologie, Biostatistique et  
Recherche Clinique, F-75018 Paris, France
- Florence Ader<sup>4</sup>, on behalf of the DisCoVeRy study group,  
Hospices Civils de Lyon, H opital de la Croix-Rousse, D epartement des  
Maladies Infectieuses et Tropicales, F-69004 Lyon, France  
Universit e Claude Bernard Lyon 1, CIRI, INSERM U1111, CNRS UMR5308,  
ENS Lyon, F-69372 Lyon, France

\*Correspondence to: Clinique des maladies infectieuses, H opital  
Universitaire de Bruxelles, 808 Route de Lennik, 1070 Brussels,  
Belgium.

E-mail address: [Maya.Hites@hubruxelles.be](mailto:Maya.Hites@hubruxelles.be) (M. Hites)

<sup>1</sup> Co-first authors.

<sup>2</sup> Co-first authors.

<sup>3</sup> Co-last authors.

<sup>4</sup> Co-last authors.