



HAL
open science

**On the genera *Scolochirus* Marshall and
Pseudoscolochirus Hoffmann, with the description of
two new species (Coleoptera, Curculionidae, Entiminae,
Cneorhinini)**

Hélène Perrin, Roman Borovec

► **To cite this version:**

Hélène Perrin, Roman Borovec. On the genera *Scolochirus* Marshall and *Pseudoscolochirus* Hoffmann, with the description of two new species (Coleoptera, Curculionidae, Entiminae, Cneorhinini). *Bulletin de la Société Entomologique de France*, 2024, 129 (1), pp.31-50. 10.32475/bsef_2309 . hal-04509235

HAL Id: hal-04509235

<https://hal.science/hal-04509235>

Submitted on 18 Mar 2024

HAL is a multi-disciplinary open access archive for the deposit and dissemination of scientific research documents, whether they are published or not. The documents may come from teaching and research institutions in France or abroad, or from public or private research centers.

L'archive ouverte pluridisciplinaire **HAL**, est destinée au dépôt et à la diffusion de documents scientifiques de niveau recherche, publiés ou non, émanant des établissements d'enseignement et de recherche français ou étrangers, des laboratoires publics ou privés.

Copyright



On the genera *Scolochirus* Marshall and *Pseudoscolochirus* Hoffmann, with the description of two new species (Coleoptera, Curculionidae, Entiminae, Cneorhinini)

Hélène PERRIN

Muséum national d'Histoire naturelle, Département Systématique et Évolution, UMR 7205, 57 rue Cuvier, F - 75231 Paris Cedex 05, France. Corresponding author. E-mail: helene.perrin@mnhn.fr.

Roman BOROVEC 

Sloupno 64, CZ-503 53 Smidary, Czech Republic.

<https://zoobank.org/References/5A99F353-B9B7-4EEC-8D54-46C6FA4C4A7D>

(Accepté le 29.I.2024 ; publié en ligne le 18.III.2024)

Citation. – Perrin H. & Borovec R., 2024. On the genera *Scolochirus* Marshall and *Pseudoscolochirus* Hoffmann, with the description of two new species (Coleoptera, Curculionidae, Entiminae, Cneorhinini). *Bulletin de la Société entomologique de France*, 129 (1) : 31-50. https://doi.org/10.32475/bsef_2309

Abstract. – Type material of the described species of *Scolochirus* Marshall, 1944, and *Pseudoscolochirus* Hoffmann, 1963, was examined, and is completed with all available material of both genera deposited in museums. Lectotypes of *Proictes biovatus* Hustache, 1936 [current name *Scolochirus biovatus* (Hustache, 1936)], *Proictes dentipes* Hustache, 1920 [current name *Scolochirus dentipes* (Hustache, 1920)], *Scolochirus armipes* Marshall, 1944, and *Scolochirus horridus* Marshall, 1951, are designated. *Scolochirus camerunensis* n. sp. from Cameroon, and *Pseudoscolochirus longirostris* n. sp. from Ghana, are described and compared with all other species of the genera. *Scolochirus cognatus* Marshall, 1951, is proposed as junior synonym of *Scolochirus dentipes* (Hustache, 1920). *Scolochirus armipes* Marshall, 1944, is recorded from Central African Republic, Congo and Democratic Republic of the Congo for the first time, as well as *S. biovatus* (Hustache, 1936) from Democratic Republic of the Congo, Ghana, Nigeria and Togo, and *S. dentipes* (Hustache, 1920) from Liberia. Male and female genitalia of the both genera are described and illustrated for the first time. Keys to species of both genera are presented.

Résumé. – Sur les genres *Scolochirus* Marshall et *Pseudoscolochirus* Hoffmann, avec la description de deux nouvelles espèces (Coleoptera, Curculionidae, Entiminae, Cneorhinini). Le matériel-type des espèces décrites appartenant aux genres *Scolochirus* Marshall, 1944, et *Pseudoscolochirus* Hoffmann, 1963, a été examiné et est complété avec le matériel disponible pour ces deux genres dans les musées. Les lectotypes de *Proictes biovatus* Hustache, 1936 [nom actuel *Scolochirus biovatus* (Hustache, 1936)], *Proictes dentipes* Hustache, 1920 [nom actuel *Scolochirus dentipes* (Hustache, 1920)], *Scolochirus armipes* Marshall, 1944, et *Scolochirus horridus* Marshall, 1951, sont désignés. *Scolochirus camerunensis* n. sp. du Cameroun, et *Pseudoscolochirus longirostris* n. sp. du Ghana, sont décrits et comparés à toutes les autres espèces de ces genres. *Scolochirus cognatus* Marshall, 1951, est proposé comme synonyme junior de *Scolochirus dentipes* (Hustache, 1920). *Scolochirus armipes* Marshall, 1944, est signalé de République centrafricaine, du Congo et de République démocratique du Congo pour la première fois, ainsi que *S. biovatus* (Hustache, 1936) de République démocratique du Congo, du Ghana, du Nigeria et du Togo, et *S. dentipes* (Hustache 1920) du Liberia. Les genitalia mâles et femelles des deux genres sont décrits et illustrés pour la première fois. Des clés d'identification des espèces des deux genres sont présentées.

Keywords. – Weevils, taxonomy, new species, new synonym, Afrotropical region.

The tribe Cneorhinini Lacordaire, 1863, includes 64 genera and is known from the Palaearctic, Afrotropical and Oriental regions with two genera known also from the Nearctic region (BOROVEC, 2023). The genus *Scolochirus* Marshall, 1944, was described as monotypic. Only two more species were described later and two

others were transferred from the similar genus *Proictes* Schoenherr, 1840. The genus *Pseudoscolochirus* Hoffmann, 1963, was also based on only one species, and it is only known from its type material to the present time. Both genera are known from West Africa, where they inhabit forest litter. In the present paper, they are redescribed and their position in this tribe is discussed. All available type material was studied, all species are redescribed, keyed and illustrated. Male and female genitalia of all species are given for the first time. Finally, one new *Pseudoscolochirus* and one new *Scolochirus* species are described.

MATERIAL AND METHODS

Body length of all specimens was measured in dorsal view from the anterior border of the eyes to the apex of the elytra, excluding the rostrum. Width/length ratio of the rostrum was measured as width at base versus maximum length to the base of the mandibles in dorsal view. Width/length ratios of pronotum, elytra, antennal and tarsal segments were taken at the maximum width and length of the respective parts in dorsal view. Female genitalia were embedded in Solakryl BMX (Medika, Prague); male genitalia were mounted dry on the same card as the respective specimen. Habitus images were taken with a Canon EOS 5D mark II in combination with a Canon MP-E65 1-5x macro lens. The resulting images were focus stacked by Zerene Stacker and post-processed in Adobe Photoshop CC 2015. Terminology of the rostrum and the genitalia follows OBERPRIELER *et al.* (2014).

Exact label data of type specimens are cited: separate labels are indicated by double slash (//), separate lines by a simple slash (/). Authors' remarks and comments are in square brackets ("p" = printed, "hw" = handwritten).

The material is deposited in the following collections (identified by the abbreviations): **BMNH**, Natural History Museum, London, United Kingdom (formerly British Museum of Natural History); **HNHM**, Természettudományi Múzeum, Budapest, Hungary; **MNHN**, Muséum national d'Histoire naturelle, Paris, France.

SYSTEMATICS

Scolochirus Marshall, 1944 (fig. 1-5, 8-13, 18, 19, 22-27, 30-35, 37)

Scolochirus Marshall, 1944: 45.

Scolochirus: MARSHALL (1951: 319, 320; species descriptions); MARSHALL (1954: 201; note); HOFFMANN (1963: 311; note); HOFFMANN (1966: 1003, note); HOFFMANN (1968: 15; note); ALONSO-ZARAZAGA & LYAL (1999: 150; catalogue).

Type species. – *Scolochirus armipes* Marshall, 1944, by original designation.

Diagnosis. – Small to middle sized Cneorhinini; rostrum 1.1-1.5× as wide as long, tapering anteriorly with straight to rounded sides, posteriorly continuous with head; epifrons wide, flat, subparallel to slightly tapering anteriorly; frons short, sparsely squamose; epistome distinct; scrobes dorsally invisible, laterally curved downwards, not reaching eyes or ventral margin of rostrum; antennae short; pronotum slender, isodiametric to 1.1× as wide as long, exceptionally in two species slightly longer than wide, disc strongly granulate or acinose; elytra long oval, at base constricted; protibiae with sharp tooth at middle of inner margin; metatibiae with slender setose corbel; penis long and slender; female sternite VIII with subtriangular plate with developed basal and apical margin; gonocoxites with short styli and long baculi.

Redescription. – Body length 3.3-5.8 mm. Body (fig. 1-5) dark brownish to blackish, fronto-epistomal area, scapes, funicles and tarsi often paler, reddish brown. The whole body except of fronto-epistomal area, basal half of scapes, funicles and clubs moderately densely covered by appressed scales; scales rounded, oval to irregularly angular, leaving integument partly shining through, in some species lateral 4-5 interstriae with scales somewhat bigger than those on disc; scales on remaining part of body the same as those on elytral disc, slightly smaller, densely covering also the entire ventral part of body. Elytra on disc with one regular row of distinct, erect setae, differing in length and shape between species, lateral interstriae with very short, semi-appressed, narrowly subspatulate setae, sometimes hardly visible, only somewhat longer than diameter of one appressed scale. Semi-appressed setae on pronotum, head and rostrum densely irregularly scattered, very short, visible mainly in profile, narrowly subspatulate, directed anteriorly, on pronotum visible mostly in anterior part; setae on scapes semi-appressed, on legs semi-erect, short, narrow.

Rostrum (fig. 8-13) short, in males 1.1-1.3 \times , in females 1.3-1.5 \times as wide as long, widest at base, here 1.1-1.2 \times as wide as at apex, at short basal part tapering anteriorly, then slightly constricted, at apical about three quarters slightly tapering anteriorly with almost straight, or slightly rounded sides; in lateral view flat, continuous with head. Epifrons with subparallel sides or slightly tapering anteriorly, wide, occupying majority of rostrum in dorsal view, flat, with very slender and well edged median longitudinal stria, in some species continuing on vertex and reaching anterior margin of pronotum. Frons short, sparsely covered by isolated appressed rounded scales, mostly with feeble metallic sheen. Epistome distinct, triangular, posteriorly carinated, reaching posteriorly level of antennal insertion. Mandibles with numerous, piliform, fine setae. Antennal insertion at apical quarter to fifth. Antennal scrobes dorsally invisible, laterally narrow, furrow-shaped, regularly curved, directed downwards, not touching ventral margin of eye and not reaching ventral margin of rostrum. Eyes somewhat large, flat or vaulted; in lateral view semi-circular to short oval, placed slightly nearer to dorsal margin of rostrum. Head behind eyes short, somewhat enlarged posteriorly.

Antennae short, slender; scapes short, reaching about half of eye in repose, slender, evenly enlarged only in apical half to third, at apex slightly narrower than clubs. Funicle 7-segmented, segment 1 conical, long, segment 2 distinctly shorter, segments 3-6 isodiametric to slightly wider than long, segment 7 largest, slightly to distinctly approximated to club.

Pronotum (fig. 1-5) slender, 1.1 \times as wide as long, isodiametric, exceptionally 1.1-1.2 \times as long as wide, widest at midlength or slightly before with regularly rounded sides, behind anterior and before posterior margin constricted with shortly parallel sides, disc strongly granulate or acinose, in lateral view weakly vaulted. Procoxal cavities contiguous, touching anterior arched margin. Scutellum invisible.

Elytra (fig. 1-5) slender and long, long oval, in males distinctly more slender than bulbous elytra of females, in males 1.48-2.03 \times as long as wide, in females 1.30-1.93 \times as long as wide, at base distinctly constricted, apically narrowly rounded, beak-shaped elongated or dully truncated. Striae punctate, interstriae narrow, in some species odd interstriae on disc slightly elevated. Elytra in lateral view strongly vaulted. Mesosternal process very narrow, about as wide as scapes at middle.

Abdominal ventrites narrowly subtriangular, 1.2-1.4 \times as long as wide, with metasternal process much narrower than transverse diameter of metacoxa, rounded. Ventrite 1 at middle slightly longer, behind metacoxa as long or shorter than ventrite 2; ventrite 2 in middle slightly longer than short ventrites 3 and 4 combined; ventrite 5 short, subtrapezoidal, apically obtuse, in one species concave.

Legs. Femora of all legs adentate, tibiae somewhat robust; protibiae (fig. 20, 21) laterally straight, inner margin in middle or anterior third distinctly toothlike enlarged with distinct transverse prominent sharp tooth, slightly denticulate at apical half, apically rounded and fringed with fine and short yellowish setae, distinctly mucronate; metatibiae with apical surface subtriangular, glabrous, shiny, laterally and mesally fringed by dense, fine and long yellowish setae, with unobtrusive mucro, laterally with slender setose corbel. Tarsi short, segment 3

distinctly wider than the others, onychium short, at most 1.1× as long as segment 3; claws fused at short basal part, slightly divaricate.

Male genitalia. Penis (fig. 22, 24-27) long and slender, curved, with differently shaped apex; temones as long as body of penis or shorter; tegmen (fig. 23) lacks parameres, with manubrium distinctly longer than diameter of slender ring, apically pompon-shaped. Sternite IX with spiculum gastrale slender and long, anteriorly tapering and curved, posteriorly with fused basal arms. Hemisternites long and wide, comma-shaped.

Female genitalia. Sternite VIII (fig. 35) with long and slender apodeme, longer than plate, with short transverse bar, terminating at base of plate; plate narrow, subtriangular, with developed basal and apical margin and apical tuft of setae. Gonocoxites (fig. 37) short, subtriangular, with long baculi, longer than hemisternites; styli short, apical, with tuft of fine setae; baculi very long, 2.6-2.8× as long as gonocoxites. Spermatheca (fig. 30-34) with slender and sometimes irregularly curved cornu, moderately robust corpus with short and wide ramus and usually small, hump-shaped collum.

Distribution. – Known mainly from West Africa: Guinea, Ivory Coast, Ghana, Togo, Benin, Nigeria, Cameroon, Central African Republic, Congo and Democratic Republic of the Congo.

Species included. – The genus includes five species, one newly described here.

Remarks. – Well defined genus among all Cneorhinini but also in comparison with entimine genera of other Afrotropical tribes, easily distinguished by uniform elongated shape of body with slender pronotum and elytra (fig. 1-5) and tooth at middle of inner margin of protibiae (fig. 18-19). The only similar genus by its slender body and rostrum structure is Cneorhinini genus *Proictes* Schoenherr, 1840. Some of the *Scolochirus* species were also originally described in this genus, until Marshall (1944) separated *Scolochirus* as an independent genus. Marshall stated following distinguishing characters for it: “marked narrowing of the elytra at their base, flat eyes and the tooth on the front tibiae”. *Scolochirus* is easily distinguishable from *Proictes* by having protibiae with prominent tooth about at middle of inner side, with lateral margin straight and prosternum ventrally not excavated in front of the coxae, lacking lateral ridge on each side.

In fact, only two Cneorhinini genera share conspicuous sharp tooth at middle of inner protibiae margin, the main distinguishing character of the genus *Scolochirus*. The second genus with identical tooth is *Pseudoscolochirus* (fig. 20-21), distinguishing characters between both genera are stated below. Some species of *Lepropus* Schoenherr, 1823, subgenus *Ischnotrachelus* Schoenherr, 1840 (Tanymecini Lacordaire, 1863), also have inner margin of protibiae armed with sparse row of slender brown teeth at apical middle to two thirds, with posterior tooth longest, reminds tooth of *Scolochirus*. But *Ischnotrachelus* is easily to be distinguished by short vibrissae on lateral part of anterior pronotal margin, laterally prominent humeral calli and long slender tooth on all femora.

***Scolochirus armipes* Marshall, 1944 (fig. 1, 8-9, 18, 22-23, 30, 35, 37)**

Scolochirus armipes Marshall, 1944: 45. MARSHALL (1951: 320; note).

Scolochirus dentipes: HOFFMANN (1966: 1003; note).

Type material examined. – LECTOTYPE (here designated): ♂ (BMNH), Type [p, rounded label with red margin] // Syn- / type [p, rounded label with blue margin] // Ivory Coast / Bingerville [p] / 12.11.1943 [hw] / H. Alibert [p] / on leaves / of cacao [hw] // Pres. by / Emp. Inst. Ent. / B. M. 1943 [p] // *Scolochirus* / *armatipes*

[sic!], Mshl. / Type ♂ [hw, Marshall's handwriting] // Lectotypus / *Scolochirus / armipes* Marshall / H. Perrin & R. Borovec desig. 2023 [p, red label].

PARALECTOTYPES: 3 ♂, 1 ♀ (BMNH), same data as lectotype except of first label "Type", complemented by red label "Paralectotypus".

Type locality. – Ivory Coast, Bingerville [5°20'N-3°54'W].

Additional material examined. – 23 ex., Côte d'Ivoire, Réserve du Banco, R. Paulian & C. Delamare (MNHN); 37 ex., Côte d'Ivoire, Bingerville, 1952, E. Lavabre (MNHN); 3 ex., Côte d'Ivoire, Bingerville, III.60 (MNHN); 2 ex., Côte d'Ivoire, Abidjan, 1962 (MNHN); 5 ex., Côte d'Ivoire, Adiopodoumé, XII.1947, Ch. Primot (MNHN); 6 ex., Central African Republic, Boukoko, Cacaoyer [*Theobroma cacao*], 1962, R. Pujol leg. (MNHN); 3 ex., Democratic Republic of the Congo, Mbila, Mts. du Chaillu, XII.1963 (MNHN); 1 ex., Congo, Dimonika, Mayumbé, I.1964 (MNHN).

Redescription. – Body length 4.31-5.81 mm. Body (fig. 1) blackish, only antennae with the exception of clubs reddish brown. Appressed scales on elytra rounded, almost covering integument, 4-5 across width of one interstria, partly arranged to rosettes around setae, not differing between disc and lateral parts; scales on remaining parts of body rounded, almost completely covering integument. Elytra with one conspicuous row of erect setae; setae equally long at basal and apical part, lance-shaped, widest at midlength and apically pointed; setae on remaining parts of body semi-appressed, bristle-shaped, short, densely irregularly scattered, hardly visible only in profile.

Rostrum (fig. 8-9) in males slenderer than in females, 1.16-1.24×, in females 1.30-1.36× as wide as long, from base slightly tapering anteriorly with only weak constriction in basal third, at base 1.13-1.19× as wide as at apical part; epifrons slightly tapering anteriorly, regularly flat, with slender and well visible median longitudinal stria, continuing to head and reaching anterior margin of pronotum. Eyes large, flat, not prominent from outline of head.

Antennae with scapes curved at base, gradually weakly enlarged at apical third, at apex 0.7-0.8× as wide as clubs; funicle segment 1 2.1-2.2× as long as wide and 1.5-1.6× as long as segment 2, this is 1.6-1.8× as long as wide; segments 3-5 isodiametric; segment 6 0.9× as long as wide, segment 7 0.8× as long as wide; clubs 1.7-1.8× as long as wide.

Pronotum (fig. 1) moderately short, 1.06-1.09× as wide as long, widest at midlength or slightly before, with distinctly rounded sides.

Elytra (fig. 1) in males slender, 1.51-1.57× as long as wide, in females bulbous, 1.30-1.37× as long as wide, widest at midlength. Interstriae 3 and 5 slightly more elevated than the others.

Legs. Protibiae (fig. 18) long and slender, with long spine placed at apical third and 5-6 small denticles in anterior third, gradually getting bigger from apex to long spine. Tarsi with segment 2 as long as wide; segment 3 0.5-0.6× as long as wide; onychium short, as long as segment 3.

Penis (fig. 22) in dorsal view long, very slender in basal two thirds and slightly evenly enlarged apically, with separated small, narrowly rounded tip; in lateral view curved at basal half and somewhat straight at apical half, evenly slightly tapering apically, with short elongated slender tip.

Spermatheca (fig. 30) with ramus conspicuously bigger than small, hump-shaped collum; ramus short, subtrapezoidal; cornu short.

Distribution. – Ivory Coast, Congo, Democratic Republic of the Congo, Central African Republic.

Remarks. – *Scolochirus armipes* was described from Ivory Coast, Bingerville, based on 18 specimens collected by H. Alibert. The lectotype is 4.88 mm long, lacking all three tarsi on right side of body and also right antenna, remounted and glued on its original label, dissected but not by authors of this paper with genitalia in glycerol in microvial under label and ventrites glued on the same label as specimen. Three paralectotypes are also remounted and dissected with genitalia in glycerol in

microvial under label. Species are easily distinguishable from the others by protibial tooth placed before midlength, but also by flat, not prominent eyes and pronotum slightly wider than long.

Scolochirus biovatus (Hustache, 1936) (fig. 2, 10, 24, 31)

Proictes biovatus Hustache, 1936: 13.

Scolochirus biovatus: MARSHALL (1951: 320; transfer to *Scolochirus*).

Type material examined. – LECTOTYPE (**here designated**): 1 ♀ (MNHN), Museum Paris / Bas-Dahomey / Plateaux de Zagnanado / Et de Kétou et Forêt / D Adja-Ouéré (saison sèche) / P. Ducorps 1910 [p, blue] // Décembre [p] // Janvier [p] // Museum Paris /1949 / Col. A. Hustache [p] // *Proictes biovatus* m. [hw] // Lectotypus / *Proictes biovatus* Hustache / H. Perrin & R. Borovec desig. 2023 [p, red label] // *Scolochirus biovatus* (Hustache) / H. Perrin & R. Borovec det. 2023 [p].

Type locality. – [Benin] Bas Dahomey, Plateaux de Zagnanado et de Kétou et forêt d'Adja-Ouéré [Kétou 7°21'N-2°36'E; Adja-Ouéré 7°00'N-2°37'E].

Additional material examined. – 1 ex., Benin, Dahomey, coll. Hénon (MNHN); 1 ex., Benin, Bas Dahomey, Plateau de Ketou, P. Ducorps lgt. (MNHN); 1 ex., Benin, Dahomey, Charles, 1909 (MNHN); 2 ex., Togo, Agou, 20.VI.1963, 1020 m (MNHN); 1 ex., Nigeria, nord de Lagos, IV.1919 (MNHN); 1 ex., Ghana, Eastern region, Kpong, Nr. 293, 10.I.1968, 6°10'N 0°03'W, 23 m, netting, Dr. S. Endrödy-Younga (HNHM); 1 ex. Democratic Republic of the Congo, Kivu: Tshibinda, XI.1932 (MNHN); 4 ex., Togo, Fazao-Malfakassa NP Point de vue campsite Sudanian savannah, 415 m, 8°48'50"N, 0°49'3.2"W, 16-24.VIII.2018, M. Geiser, M. Aristophanous, P. Moretto, B. Sanbena leg. (BMNH).

Redescription. – Body length 4.06-4.69 mm. Body (fig. 2) brownish to dark brownish, antennae including clubs yellowish red, tarsi reddish brown. Appressed scales on elytra irregularly angular, covering integument, 4-5 across width of an interstria width; scales on remaining parts of body identical, only slightly smaller. Elytra with one regular conspicuous row of erect setae on interstriae 1-3 and 5, setae distinctly longer than width of one interstria, narrowly subspatulate, apically rounded, distance between two setae slightly shorter than length of one seta, setae on interstria 1 very near to suture, obliquely inclined to adjacent elytron, crossed; semi-appressed setae on pronotum, head with rostrum and legs short, shorter than quarter of length of elytral seta, narrowly subspatulate, orientated anteriorly.

Rostrum (fig. 10) moderately long and slender, slightly slenderer in males, 1.20-1.24× as wide as long, in females 1.27-1.31× as wide as long, widest at base, distinctly tapering in short basal part, then with slightly rounded sides, at base 1.09-1.13× as wide as at apical part; epifrons slender, with slightly concave sides, slightly longitudinally deepened, with slender median longitudinal stria, not continuing on head. Eyes somewhat small, vaulted and prominent from outline of head.

Antennae with slightly S-shaped scapes, evenly slightly enlarged at apical third, at apex 0.6-0.7× as wide as clubs; segment 1 1.8-2.0× as long as wide and 1.5-1.6× as long as segment 2, which is 1.5-1.6× as long as wide; segments 3-5 isodiametric; segment 6 0.7-0.8× as long as wide, segment 7 0.4-0.5× as long as wide; clubs 1.8-1.9× as long as wide.

Pronotum (fig. 2) slender, 1.12-1.15× as long as wide, widest at midlength, with somewhat and regularly rounded sides.

Elytra (fig. 2) in both sexes slender, elongate, apically beak-shaped lengthened, in males 1.96-2.03×, in females only slightly wider, 1.89-1.93× as long as wide. Striae narrowly punctate; interstriae in apical half distinctly elevated, interstriae 3 and 5 along the whole length only slightly more elevated than the others.

Abdominal ventrites with segment 5 apically distinctly concave.

Legs. Protibiae with long spine before midlength and 2-4 small denticles at inner edge of apical half, mostly with only 2 denticles visible just in its short apical portion. Tarsi with

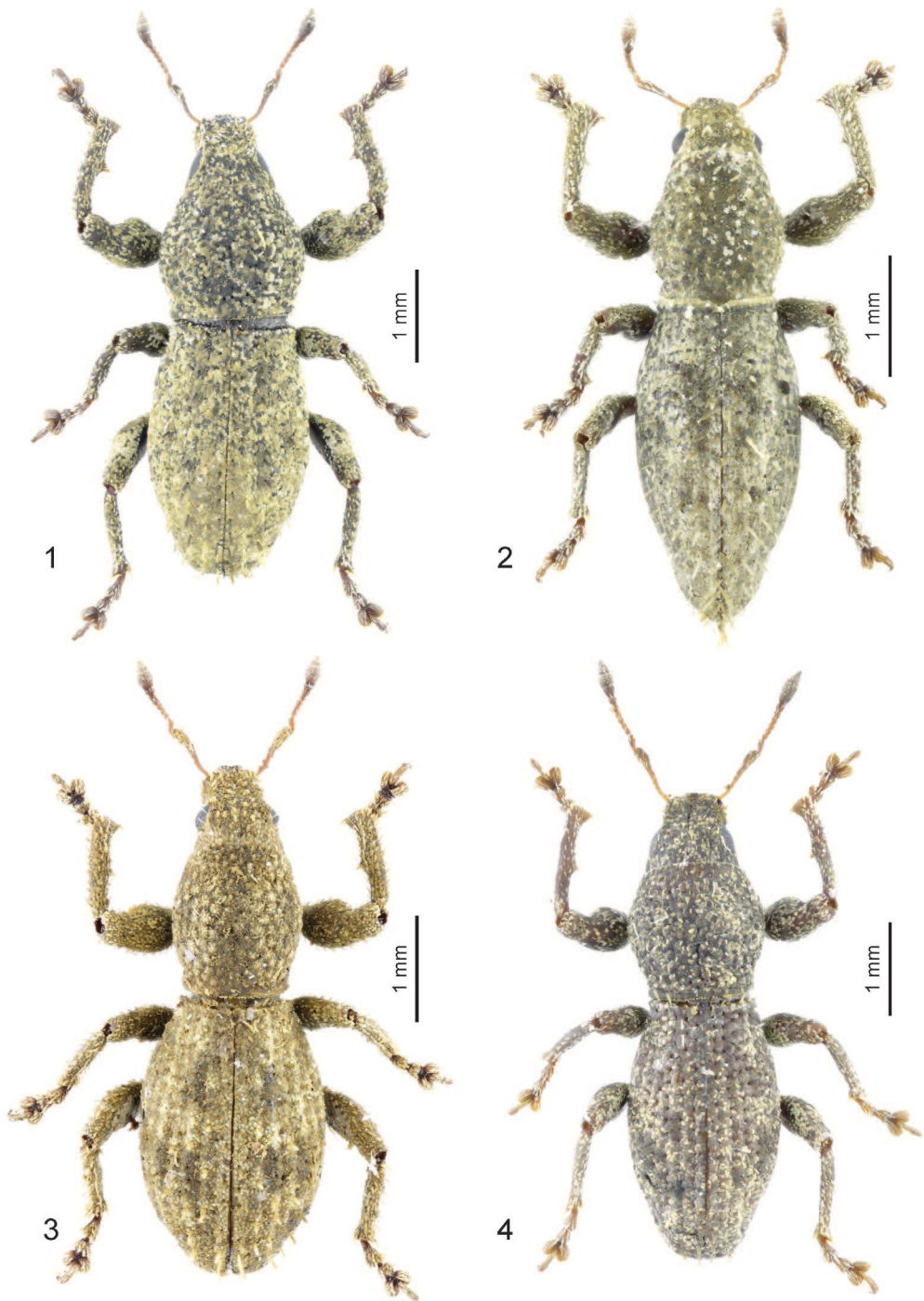


Fig. 1-4. - *Scolochirus* spp., dorsal habitus. - 1, *S. armipes* Marshall. - 2, *S. biovatus* (Hustache). - 3, *S. camerunensis* n. sp. - 4, *S. dentipes* (Hustache).

segment 2 0.7-0.8× as long as wide; segment 3 0.6-0.7× as long as wide; onychium 0.9× as long as segment 3.

Penis (fig. 24) long and slender, in dorsal view widest at base, but in majority of its length subparallel-sided, tip broadly rounded; in lateral view almost regularly curved, very short tip curved outside, apically rounded.

Spermatheca (fig. 31) with short cornu and robust, large, rounded corpus; ramus short, more than twice wider than long, rounded; collum very small, hump-shaped.

Distribution. – Ghana, Togo, Benin, Nigeria, Democratic Republic of the Congo.

Remarks. – Species described according to 8 specimens from Benin, Plateaux de Zagnanado et de Kétou et forêt d'Adja-Ouéré, collected by P. Ducorps. Exceptional species in very slender, apically pointed elytra, with elytral setae at posterior declivity obliquely erect, and also apically concave ventrite 5 in both sexes.

***Scolochirus camerunensis* n. sp.** (fig. 3, 11, 19, 25, 32)

<https://zoobank.org/NomenclaturalActs/16fdd1ba-a598-4b68-ae30-4b27f5fda5f4>

Type material. – HOLOTYPE: ♂ (MNHN), Cameroun / Ngaoundéré / II.31, Vadon! [hw] // Muséum Paris [p] / coll. / Vadon [hw] // Holotypus / *Scolochirus* / *camerunensis* sp. n. / H. Perrin & R. Borovec det. 2023 [p, red label].

PARATYPES: 2 ex., same data as holotype, only "Paratypus" (MNHN); 6 ex.: Cameroun / Yaoundé / Vadon! [p] // Muséum Paris [p] / coll. / Vadon [hw] // Paratypus / *Scolochirus* / *camerunensis* sp. n. / H. Perrin & R. Borovec det. 2023 [p, red label]; 2 ex., Cameroun / Yaoundé [hw] // Muséum Paris / 1968 / Col. A. Hoffmann [p] // Paratypus / *Scolochirus* / *camerunensis* sp. n. / H. Perrin & R. Borovec det. 2023 [p, red label].

Type locality. – Cameroun, Ngaoundéré [7°19'N-13°35'E].

Note. – One specimen from Yaoundé bears label "*Proictes elongatulus* m.", written by Hustache's handwriting. This species has never been described, neither under name *Proictes* nor *Scolochirus*; Hustache described only species with similar name *Proictes elongatus* Hustache, 1956, from Madagascar. Two other specimens from Yaoundé bear label "*Scolochirus hirtipennis* Boh., A. Hoffmann det.". *Proictes hirtipennis* (Boheman, 1833) has never been transferred to the genus *Scolochirus*. Moreover, type specimen of that species was examined by the second author in Boheman's collection in Museum Stockholm and this type specimen is not conspecific with species from Cameroun, and clearly belongs to genus *Proictes*, not *Scolochirus*.

Description. – Body length 4.06-5.52 mm, holotype 4.87 mm. Body (fig. 3) dark brownish, scapes, funicles and tarsi paler, reddish brown. The whole body moderately densely covered by appressed scales; scales on disc of elytra smaller, somewhat sparse, 4-5 across width of one interstria, on lateral 3-4 interstriae bigger, covering integument; scales rounded to irregularly angular, indistinctly longitudinally striate; scales on remaining part of body the same as those on elytral disc. Elytra on disc with one regular row of erect setae, setae somewhat shorter than width of interstria, subspatulate, widest at midlength, apically rounded, distance between two setae 2-3 longer than length of one seta; semierect setae on other parts of body about as long as a third length of elytral seta, subspatulate, densely irregularly scattered, lacking only on basal two thirds of pronotum.

Rostrum (fig. 11) short, 1.22-1.28× as wide as long, at short basal part tapering anteriorly, then with slightly rounded sides, at base about as wide as at apical part; epifrons slightly tapering anteriorly, with sometimes hardly visible median longitudinal stria, continuing to head but in some specimens interrupted at base of epifrons. Eyes moderately smaller, distinctly vaulted and conspicuously prominent from outline of head.

Antennae with moderately short scapes, evenly slightly enlarged at apical half, at apex 0.7-0.8× as wide as clubs; funicle segment 1 2.2-2.4× as long as wide and 1.6-1.7× as long as

segment 2, which is 1.6-1.7× as long as wide; segments 3-5 isodiametric; segment 6 0.9× and segment 7 0.8× as long as wide; clubs 1.9-2.0× as long as wide.

Pronotum (fig. 3) long and slender, 1.14-1.18× as long as wide, with slightly rounded sides. widest at midlength.

Elytra (fig. 3) in males slender, 1.52-1.55× as long as wide, in females somewhat bulbous, 1.43-1.49× as long as wide, widest at midlength. Interstriae 3 and 5 slightly more elevated than the others.

Legs. Protibiae (fig. 19) moderately short and robust, with long spine at midlength and 5-7 small short spines at apical half. Tarsi with segment 2 as long as wide; segment 3 0.5-0.6× as long as wide; onychium 0.9× as long as segment 3.

Penis (fig. 25) dorsally parallel-sided, apically rounded, in middle part with short row of fine and short, twisted setae, laterally prominent; laterally in basal three quarters equally wide and regularly curved, in apical quarter lengthened, slender, straight.

Spermatheca (fig. 32) with very big ramus and very small collum; ramus isodiametric, subsquared; collum hump-shaped, subtriangular; cornu very long and very slender.

Distribution. – Cameroon, known from two localities, Ngaoundéré and Yaoundé.

Remarks. – *Scolochirus camerunensis* n. sp. is moderately large and slender species, easily distinguish from the others by small, distinctly vaulted eyes and slender and long pronotum, longer than wide, widest at midlength, spine of protibiae at midlength and subspatulate elytral erect setae, shorter than width of interstria.

Scolochirus dentipes (Hustache, 1920) (fig. 4, 12, 26, 33)

Proictes dentipes Hustache, 1920: 45.

Scolochirus dentipes: MARSHALL (1951: 320; species transfer to *Scolochirus*); HOFFMANN (1966: 1003; note); HOFFMANN (1968: 15; note).

Syn. *Scolochirus cognatus* Marshall, 1951: 320, n. syn. MARSHALL (1954: 201; note); HOFFMANN (1963: 311; note).

Type locality. – Ivory Coast, Fort Hittos [7°15'N-8°09'W].

Type material examined. – *Scolochirus dentipes*. LECTOTYPE (**here designated**): 1 ♀ (MNHN), Museum Paris / Haute Côte d'Ivoire / Danané (Fort Hittos) / A. Chevalier 1910 [p, blue] // Avril [p] // Museum Paris / 1949 / Col. A. Hustache [p] // TYPE [p, red ink] // *Proictes / dentipes* / type Hust. [hw] // Lectotypus / *Proictes / dentipes* Hustache / H. Perrin & R. Borovec desig. 2023 [p, red label] // *Scolochirus / dentipes* (Hustache) / H. Perrin & R. Borovec det. 2023 [p].

PARALECTOTYPE: 1 ex. (MNHN), same data as lectotype except of label "Lectotypus", complemented by red label "Paralectotypus". There are three more specimens with the same labels, but without type indication.

Scolochirus cognatus. 1 ♀ syntype (BMNH), Co- / type [p, rounded with yellow margin] // IFAN-1946 / Mt. Nimba n. e. / 500-700 m / A. Villiers [hw] // *Scolochirus / cognatus*, Mshl. / Cotype ♀ [hw, Marshall's handwriting]. 1 ♀ syntype (MNHN), IFAN-1946 / Tonkouli C. I. / 500-900 m / A. Villiers [hw] // 20-30-IX / culture [hw] // TYPE [p, red] // Muséum Paris [p, blue] // *Scolochirus / cognatus*, Mshl. / Type ♀ [hw, Marshall's handwriting] // *Scolochirus / dentipes* (Hustache) / H. Perrin & R. Borovec det. 2023 [p].

Additional material examined. – 9 ex., Côte d'Ivoire, Danané, I.1939 (MNHN); 9 ex., Côte d'Ivoire, Copoupleu, près Danané, au bord du Boan, 21.I.1959, IFAN, M. Condamin et R. Roy (MNHN); 1 ex., Ivory Coast, Yéalé [Yalé] Village, Mt. Nimba, 380 m, 7°31'35.3"N, 8°25'20.1"W, 18-29.IV.2016, M. Geiser, M. Aristophanous, P. Moretto leg. (BMNH); 1 ex., Guinea, Marais du Yafélé, 25.V.1991, entre Kéoulenta et Nzo, battage en forêt environnante (MNHN); 2 ex., Guinée, Mt. Nimba, forêt du Zougoué, vers 800 m, battage arbustes, 19.VI.1991, C. Girard (MNHN); 5 ex., Guinée, Nimba, Yalanzou, II-VI.1942, M. Lamotte (MNHN); 1 ex., Guinée,

Nimba, Yanlé, II-VI.1942, M. Lamotte (MNHN); 1 ex., Guinée, Nimba, VII-XII.1951, Lamotte et Roy (MNHN); 2 ex., Guinée, Nimba, Nzo, II.VI.1942, M. Lamotte (MNHN); 1 ex., Democratic Republic of the Congo, Ruwenzori, Vall. Butagu, 22.XI.1931, 2000 m (MNHN); 10 ex., Liberia, Putu Range, eastern lowlands near Penoken (Petroken) Town, Grand Gedeh County, 240-500 m, 5°38'57.67"N, 8°09'43.04"W, 29-31.I.2018, M. Geiser, Sz. Sáfián, G. Simonics leg. (BMNH); 7 ex., Liberia, Trail from Pellokon Town to border of Krahn-Bassa reserve, Sinoe County, 160 m, 5°39'41"N, 8°37'24"W, 13-22.I.2018, M. Geiser, Sz. Sáfián, G. Simonics leg. (BMNH).

Redescription. – Body length 4.31-5.81 mm. Body (fig. 4) blackish, with darker antennae and tarsi. Appressed scales on elytra oval to long oval, leaving very slender space among them, 4-5 across width of one interstria, slightly bigger in lateral 4-5 interstriae, partly arranged to rosettes around setae, mostly in lateral part of elytra; scales on remaining parts of body oval to short oval. Elytra on disc with one regular row of erect setae, setae almost as long as width of one interstria, narrowly subspatulate, apically slightly truncated, distance between two setae only slightly longer than length of one seta, setae longer at posterior declivity than in basal half; semierect setae on remaining parts of body short, slender, fine, visible mainly in lateral view.

Rostrum (fig. 12) narrower in males, 1.29-1.32× as wide as long, in females 1.46-1.53× as wide as long, at short basal part tapering anteriorly, then slightly widened with rounded sides; epifrons slightly tapering apicad with slightly rounded sides, regularly flat, with slender and well visible median longitudinal stria, continuing to head and reaching anterior margin of pronotum. Eyes large, slightly vaulted and slightly prominent from outline of head.

Antennae with moderately slender scapes, slightly enlarged at apical third, at apex 0.7-0.8× as wide as clubs, funicle segment 1 1.9-2.1× as long as wide and 1.6-1.8× as long as segment 2, this is 1.5-1.6× as long as wide, segments 3-7 isodiametric; clubs 2.1-2.2× as long as wide.

Pronotum (fig. 4) 1.02-1.05× as wide as long, widest at anterior third, with distinctly rounded sides.

Elytra (fig. 4) in males slender, 1.68-1.73× as long as wide, in females bulbous, 1.38-1.41× as long as wide, widest at midlength. Interstria 3 indistinctly more elevated than other interstriae.

Legs. Protibiae long and slender, with long spine at midlength and 5-7 very small, sometimes hardly visible denticles at apical half. Tarsi with segment 2 isodiametric; segment 3 0.4-0.5× as long as wide; onychium 1.1× as long as segment 3.

Penis (fig. 26) in dorsal view subparallel-sided in middle part, in basal quarter constricted, apically pointed; in lateral view curved, in apical third irregularly tapered, dorsal margin slightly sinuous, short tip narrow.

Spermatheca (fig. 33) with ramus only slightly bigger than collum; ramus wider than long, collum subtriangular, apically rounded; cornu long and slender.

Distribution. – Guinea, Liberia, Ivory Coast, Democratic Republic of the Congo.

Remarks. – *Scolochirus dentipes* was described based on non-specified number of specimens from Ivory Coast, Fort Hittos and Bingerville, collected by A. Chevalier. *Scolochirus cognatus* was described according to two females from Ivory Coast, Mt. Tonkoui and Mt. Nimba, both collected by A. Villiers. Both syntype specimens of *S. cognatus* are conspecific with type specimens of *S. dentipes*, and *S. cognatus* is therefore a junior subjective synonym of *S. dentipes*. Large species, with protibial tooth placed at midlength of inner side, large eyes, only slightly vaulted and wider pronotum, widest at anterior third.

***Scolochirus horridus* Marshall, 1951 (fig. 5, 13, 27, 34)**

Scolochirus horridus Marshall, 1951: 319. HOFFMANN (1963: 311; note).

Type material examined. – LECTOTYPE (here designated): ♂ (BMNH), Co- / type [p, rounded with yellow margin] // IFAN-1946 / Tonkoui C. I. / 900-1200 m / A. Villiers [hw] // Forêt prim. / 28-30 - IX [hw] // *Scolochirus* / *horridus*, Mshl. / Cotype ♂

[hw, Marshall's handwriting] // Pres by / Com. Inst. Ent. / B. M. 1951-61 [p] // BMNH (E) #715838 / Digitally scanned [p] // Lectotypus / *Scolochirus* / *horridus* Marshall / H. Perrin & R. Borovec desig. 2023 [p, red label].

PARALECTOTYPES, 1 ♀ (BMNH), same data as lectotype, only marked as ♀; 1 ♂ (MNHN), IFAN-1946 / Tonkoui c. i. / 500 - 900 m / A. Villiers [hw] // 20-30 - IX / culture [hw] // TYPE [p, red] // Muséum Paris [p, blue] // *Scolochirus* / *horridus*, Mshl. / TYPE ♂ [hw]; both specimens labelled as "Paralectotypus".

Type locality. - Ivory Coast: Mt. Tonkoui [7°27'N-7°38'W].

Additional material examined. - 2 ex., Côte d'Ivoire, Lamto, Toumodi, 28.X.1963 (MNHN); 5 ex., Côte d'Ivoire, Lamto, L. Bigot, 21.V.1962 (MNHN); 1 ex., Koua Bocca, 4.IX (MNHN).

Redescription. - Body length 3.31-3.94 mm. Body (fig. 5) dark brownish, antennae including clubs yellowish red, tarsi reddish brown. Appressed scales on elytra irregularly angular, moderately big, four across width of one interstria, leaving very narrow spaces between them; scales on remaining parts of body identical, only slightly smaller. Elytra with one regular, conspicuous row of long erect setae, setae slightly longer than width of one interstria, narrow, parallel-sided, distance between two setae longer than length of one seta; semi-appressed setae on pronotum and head with rostrum short, about as long as quarter of length of elytral seta, narrowly subspatulate, orientated anteriorly; setae on legs identical, semierect.

Rostrum (fig. 13) very short, slightly slenderer in males, 1.23-1.29× as wide as long, in females 1.33-1.37× as wide as long, at short basal part slightly tapering anteriorly, then with rounded sides, at base as wide as at anterior third; epifrons slightly tapering anteriorly, flat, with slender longitudinal stria continuing to anterior margin of pronotum. Eyes moderately large, slightly vaulted and prominent from outline of head.

Antennae with scapes slightly S-shaped, mallet-shaped at short apical quarter, at apex 0.8× as wide as clubs; segment 1 1.7-1.8× as long as wide and 1.8-1.9× as long as short segment 2, this is 1.2-1.3× as long as wide; segments 3-5 0.8-0.9× as long as wide; segment 6 0.7-0.8× as long as wide, segment 7 0.5-0.6× as long as wide; clubs twice longer than wide.

Pronotum (fig. 5) slender, about as long as wide, widest before midlength, with distinctly rounded sides.

Elytra (fig. 5) moderately short, in males more slender, 1.48-1.52×, in females wider, 1.39-1.44× as long as wide. Striae narrow, all interstriae equally wide and flat.

Legs. Protibiae with long spine slightly before midlength and very minute 3-4 yellowish denticles at apical half. Tarsi with segment 2 0.9× as long as wide; segment 3 0.7-0.8× as long as wide; onychium 0.9× as long as segment 3.

Penis (fig. 27) dorsally moderately short, at apical half evenly tapered anteriorly with rounded sides, tip pointed; in lateral view regularly curved, evenly pointed apically, slightly curved dorsally at apical fifth.

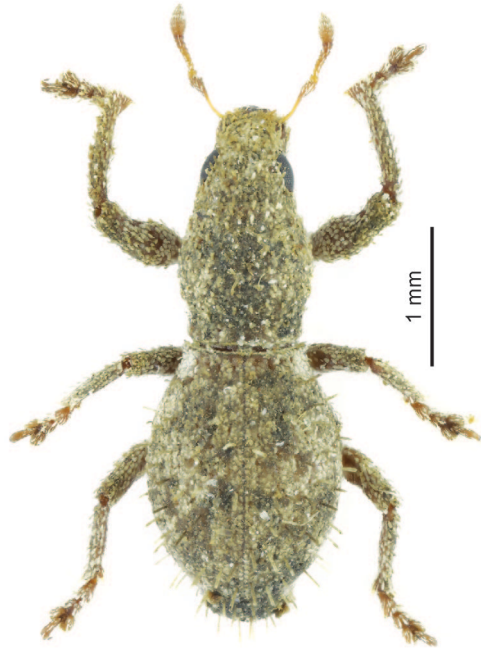


Fig. 5. - *Scolochirus horridus* Marshall, dorsal habitus.

Spermatheca (fig. 34) with conspicuously enlarged corpus, rounded, its diameter longer than cornu; ramus short, distinctly wider than long, rounded; collum very small, shortly tube-shaped, parallel with margin of ramus; cornu short, slender.

Distribution. – Guinea, Ivory Coast.

Remarks. – *Scolochirus horridus* was described from 10 specimens collected by A. Villiers in Ivory Coast, Mt. Tonkoui. Together with *S. biovatus*, it is the smallest species of the genus, easily recognizable by long and slender erect elytral setae.

Key to *Scolochirus* species

1. Elytra in both sexes very slender, apically pointed, compressed behind with suture as a highest part, in males 1.9-2.0×, in females 1.9× as long as wide. Elytral setae at posterior declivity obliquely inclined to adjacent elytron, crossed. Ventricle 5 in both sexes apically concave. Penis in lateral view with tip curved outside. Body size 4.1-4.7 mm *S. biovatus* (Hustache)
- Elytra long oval to ovoid, apically rounded, in females somewhat bulbous, in males at most 1.7×, in females at most 1.4× as long as wide. Elytral setae at posterior declivity protruding only above proper elytron. Ventricle 5 apically rounded to subtruncated. Penis in lateral view with tip straight 2
2. Smaller species, 3.3-3.9 mm. Elytral raised setae slender, parallel-sided, slightly longer than width of interstria. Antennal scapes abruptly enlarged in short tip, funicle segment 2 short, 1.2-1.3× as long as wide. Protibiae with three or four minute denticles at apical half. Penis in dorsal view evenly tapering apicad in apical half. Spermatheca with conspicuously rounded corpus, with diameter as long as cornu *S. horridus* Marshall
- Bigger species, body size more than 4 mm. Elytral raised setae wider, subspatulate, shorter than width of interstria. Antennal scapes evenly enlarged in apical third, funicle segment 2 long, at least 1.5× as long as wide. Protibiae with five or six small denticles at apical half. Penis in dorsal view parallel-sided or enlarged in apical half. Spermatheca with small corpus, with diameter much shorter than cornu 3
3. Spine of protibiae before midlength. Eyes flat, not prominent from outline of head. Pronotum slightly wider than long. Penis dorsally enlarged at apical third. Spermatheca with short and wide cornu. Body size 4.3-5.8 mm *S. armipes* Marshall
- Spine of protibiae at midlength. Eyes slightly or distinctly vaulted, slightly or distinctly prominent from outline of head. Pronotum as long as wide or slightly longer than wide. Penis dorsally parallel-sided along the whole length. Spermatheca with long and slender cornu 4
4. Eyes small, distinctly vaulted. Pronotum slenderer, slightly longer than wide, widest at midlength. Penis widest at base, dorsally parallel-sided, apically rounded, with row of short, laterally prominent setae in middle portion; in profile in apical quarter lengthened, straight. Spermatheca with ramus conspicuously bigger than collum. Body size 4.1-5.5 mm *S. camerunensis* n. sp.
- Eyes large, slightly vaulted. Pronotum wider, as long as wide, widest at anterior third. Penis dorsally in basal quarter constricted, apically pointed, lacking setae in middle portion; in profile in apical third irregularly tapered, with dorsal margin slightly sinuous. Spermatheca with ramus only slightly bigger than collum. Body size 4.3-5.8 mm *S. dentipes* (Hustache)

***Pseudoscolochirus* Hoffmann, 1963 (fig. 6-7, 14-17, 20-21, 28-29, 36, 38)**

Pseudoscolochirus Hoffmann, 1963: 311. ALONSO-ZARAZAGA & LYAL (1999: 150; catalogue).

Type species. – *Pseudoscolochirus nimbaensis* Hoffmann, 1963, by original designation.

Diagnosis. – Small to middle sized Cneorhinini. Rostrum slightly to distinctly longer than wide, in ventral and lateral parts glabrous; epifrons narrowest at base,

evenly enlarged apicad; frons large, reaching behind antennal insertion; eyes sub-dorsally placed; vertex narrow; pronotum slightly wider than long; protibiae with sharp tooth at middle of inner margin; metatibiae with slender setose corbel; penis long and slender; female sternite VIII with slender subtriangular plate, with apodeme terminating at basal margin; gonocoxites with short apical styli and long baculi.

Redescription. – Body length 3.2-5.9 mm. Body (fig. 6-7) dark brownish to blackish, antennae and tibiae with tarsi paler, reddish brown. The whole body except of frontal, lateral and ventral parts of rostrum and antennae covered by appressed scales; scales rounded to irregularly rounded, almost covering integument, four to six across one interstria on elytra. Dorsal seven interstriae of elytra with long, slender, erect setae, forming one regular row on each interstria, lateral interstriae lacking any erect setae; pronotum, head with rostrum, femora and tibiae with much shorter, semi-erect setae, irregularly scattered; setae on scapes appressed.

Rostrum (fig. 14-17) long, slightly to distinctly, 1.1-1.5× as long as at base wide, indistinctly widest at base, at basal third slightly evenly tapering anteriorad with straight sides, then subparallel-sided; in lateral view slightly vaulted to almost straight, separated from head by shallow transverse depression with ill-defined margins. Epifrons narrowest at base, here 0.4-0.5× as wide as width of rostrum in corresponding part, evenly enlarged apicad with concave to straight sides, in place of antennal insertion occupying almost the whole width of rostrum; dorsally flat or slightly shallowly depressed, with slender and short median longitudinal stria. Frons large, sparsely squamose, with short slender median longitudinal keel, posteriorly reaching behind anterior insertion. Epistome very small, subtriangular, hardly visible. Mandibles small, not armed with any tooth, not scaled, with irregularly scattered numerous setae. Antennal insertion in apical quarter to fifth of rostrum. Antennal scrobes in dorsal view invisible, in lateral view furrow-shaped, narrow, regularly curved and directed downwards.

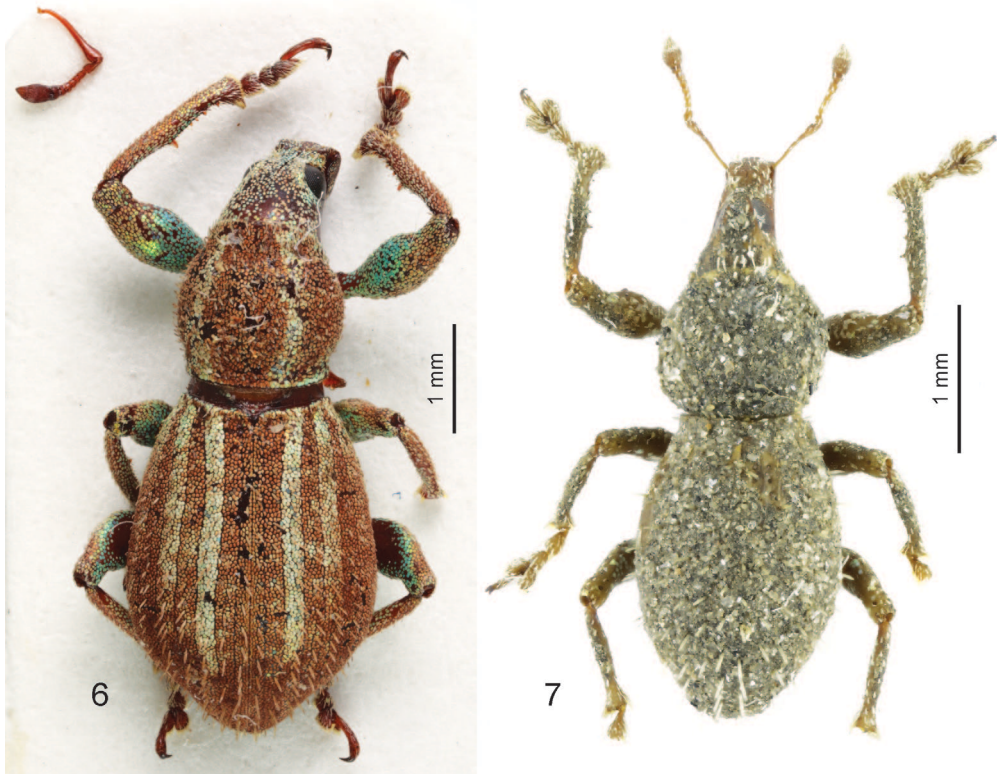


Fig. 6-7. – *Pseudocolochirus* spp., dorsal habitus. – 6, *P. nimbaensis* Hoffmann. – 7, *P. longirostris* n. sp.

Rostrum ventrally and in lateral view glabrous, ventral side with several sparse, semi-appressed slender setae. Eyes medium-sized, subdorsally placed, flat, not prominent from outline of head, in profile almost touching dorsal border of head. Vertex narrow, at most twice as wide as antennal club. Head behind eyes slightly longer than diameter of eye.

Antennae slender; scapes almost reaching posterior border of eye in repose, 1.1-1.2× as long as funicle, very slender, slightly S-shaped curved along the whole length, only slightly enlarged in its tip. Funicle 7-segmented, last segment large, closely approximated to club.

Pronotum (fig. 6-7) 1.1-1.2× as wide as long, widest at midlength, slightly constricted behind anterior margin, disc regularly domed, indistinctly flatly granulated, granules covered by appressed scales; in lateral view somewhat vaulted, anterolateral margin directed distinctly obliquely ventrad to procoxae. Procoxal cavities contiguous, much nearer to anterior than posterior margin. Scutellar shield in dorsal view small, hardly visible.

Elytra (fig. 6-7) slender, long oval, slenderer in males, in males 1.4-1.5× as long as wide, in females 1.3-1.4× as long as wide, widest at or behind midlength, in males more slender than in females, at base as wide as base of pronotum, apically slightly beak-shaped elongated. Elytra laterally convex, posterior slope not overhanging apex. Elytra 10-striate, striae punctate, hidden under appressed scales, intestriae flat, equally wide. Elytra in lateral view strongly vaulted. Mesocoxae semiglobular, mesosternal process very narrow, about as wide as base of antennal scapes. Metacoxae semiglobular, metaventral process narrow, weakly rounded, narrower than transverse diameter of metacoxa.

Abdomen ventrally elongate subtriangular, 1.2-1.3× as long as wide; segments 1 and 2 in middle and also behind metacoxae subequal in length; segment 2 in middle slightly longer than segments 3 and 4 combined, these short, equally long; ventrite 5 in females longer, apically rounded, in males shorter, apically slightly truncate. Suture between ventrites 1 and 2 sinuose, the others straight.

Legs. Femora of all legs adentate, tibiae long; protibiae (fig. 20-21) with lateral edge straight, inner margin before midlength enlarged with distinct transversely prominent sharp tooth, at apical half denticulate, apically rounded and fringed with fine and short yellowish setae, distinctly mucronate; metatibiae with apical surface subtriangular, glabrous, shiny, laterally and mesally fringed by dense, fine and long yellowish setae, with unobtrusive mucro, laterally with very slender setose corbel. Tarsi with segment 3 distinctly wider than 1 and 2 combined, onychium short, not longer than segment 3; claws fused at basal half, equally or unequally long.

Sexual dimorphism. Males have shorter rostrum, more slender elytra and also slightly shorter ventrite 5 than females.

Male genitalia. Penis (fig. 28) usually long and slender; temones about 1.5× as long as body of penis; endophallus with long and slender, U-shaped sclerite. Tegmen (fig. 29) with slender ring with short, translucent parameres; manubrium 2-3× as long as diameter of ring. Sternite IX with spiculum gastrale slender and long, anteriorly tapering and slightly curved, posteriorly with fused basal arms. Hemisternites moderately long, comma-shaped.

Female genitalia. Sternite VIII (fig. 36) with slender and moderately long apodeme, terminating at base of plate, here forming short basal margin; plate slender, subtriangular, slightly longer than wide. Gonocoxites (fig. 38) short, flat, subtrapezoidal, with very short apical styli with tuft of short, fine setae; baculi very long, 3× as long as gonocoxites. Spermatheca not examined.

Distribution. – Known from West Africa, Guinea and Ghana.

Species included. – Two species, one of them here newly described.

Remarks. – HOFFMANN (1963), in his original description, briefly defined a new genus *Pseudoscolochirus* and assigned it near to genus *Scolochirus*, without specification of their differential characters. Type species (and the only known of the genus) has never been recollected again and type series is thus the only known material of *Pseudoscolochirus*. We put in this genus the second, here newly described species, which is easily recognizable from *P. nimbaensis* by primarily distinctly longer rostrum with narrowed eye portion of head, with scrobes in lateral view curved to ventral part

of rostrum in long distance before eyes. Despite of these significant distinguishing characters, newly assigned species shares with *P. nimbaensis* characters distinguishing *Pseudoscolochirus* from *Scolochirus*, as follows:

- *Pseudoscolochirus*: eyes placed subdorsally, vertex narrower than space between antennal insertions; frons occupying anterior half of rostrum, separated posteriorly by

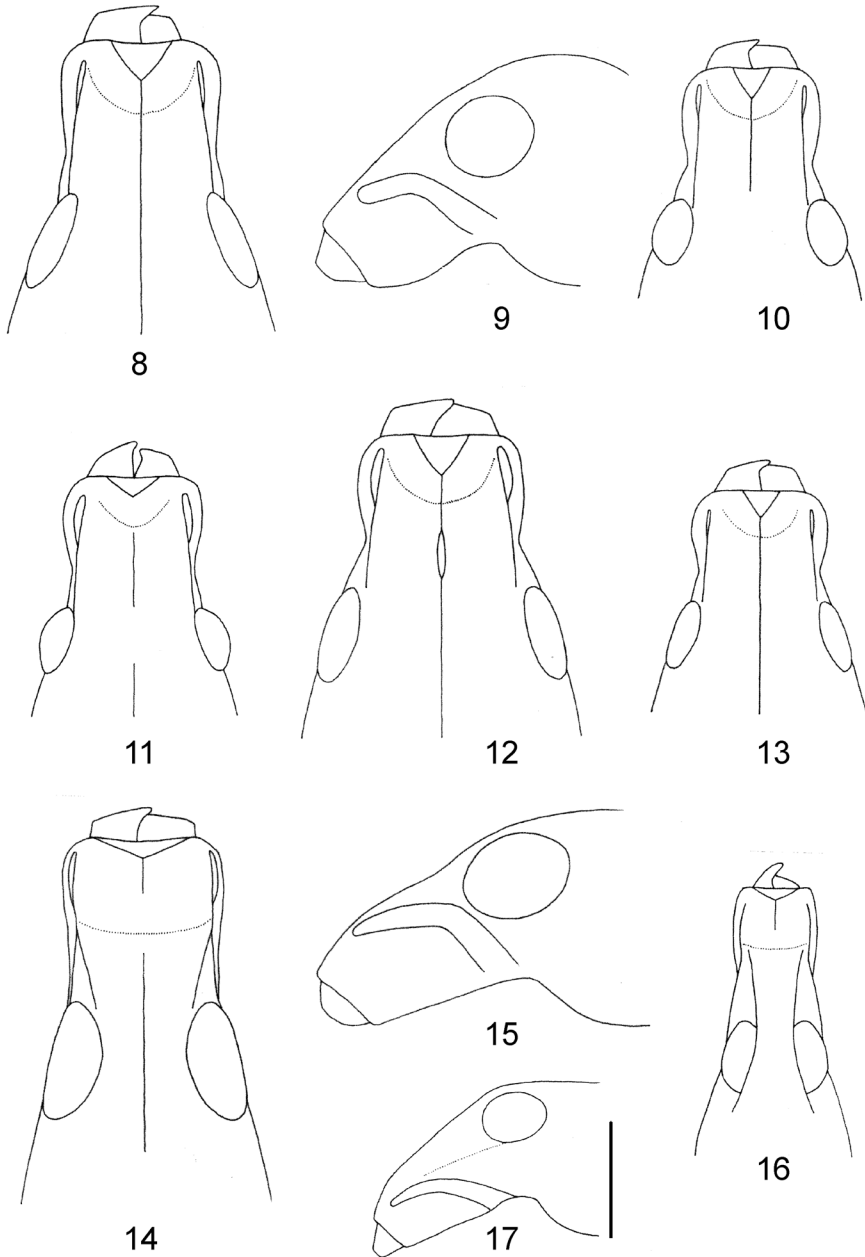


Fig. 8-17. - *Scolochirus*, *Pseudoscolochirus*, head with rostrum, dorsal and lateral view. - 8-9, *Scolochirus armipes* Marshall. - 10, *S. biovatus* (Hustache). - 11, *S. camerunensis* n. sp. - 12, *S. dentipes* (Hustache). - 13, *S. horridus* Marshall. - 14-15, *Pseudoscolochirus nimbaensis* Hoffmann. - 16-17, *P. longirostris* n. sp. Scale: 0.50 mm.

slender inconspicuous transverse carina; rostrum laterally glabrous; tegmen with short parameres;

– *Scolochirus*: eyes placed laterally, vertex as wide or wider than space between antennal insertions; frons forming a narrow glabrous stripe bordered epistome, posteriorly not carinated; rostrum laterally squamosa; tegmen lacking parameres.

***Pseudoscolochirus nimbaensis* Hoffmann, 1963 (fig. 6, 14-15, 20)**

Pseudoscolochirus nimbaensis Hoffmann, 1963: 312. LAMOTTE & ROY (1998: 126; note); LAMOTTE & ROY (2003: 85; note); ALONSO-ZARAZAGA & LYAL (1999: 150; catalogue).

Type material examined. – “Type” *sensu* Hoffmann (= holotype) and 7 paratypes (2 ♂, 5 ♀) (MNHN): IFAN / Nimba (Guinée) / Lamotte et Roy / VII - XII 51 [p, blue] // 75 Pa [hw, in 2 paratypes 76 Ph] // prairie d’altitude / 1650 m. Camp II [hw] // Type [Paratype in other 7 specimens] [hw, red] // *Pseudoscolochirus / nimbaensis* m. [hw] / A. Hoffmann det. [p].

Type locality. – Guinea, Nimba Mts., Mont Richard-Molard [7°37’N-8°24’W].

Comment. – Although HOFFMANN (1963) in his original description stated seven type specimens, we were able to find eight specimens labelled by his red type labels in the collection. In the description, he wrote “Grand Nimba (= mont Richard-Molard)”, but the insects are labelled as it is in “type material examined”.

Redescription. – Body length 5.12-5.89 mm. Body (fig. 6) blackish, antennae, tibiae and tarsi reddish brown. Appressed scales on body rounded, almost entire integument, brownish, elytral interstriae 3, 5 and 7, three longitudinal slender stripes on pronotum, dorsal part of rostrum, femora and ventral side of body greenish. Elytra with erect whitish piliform setae, forming one dense regular row on each interstria, slightly shorter than width of one interstria, distance between two setae almost as long as length of one seta. Setae on pronotum, head with rostrum distinctly shorter, densely irregularly scattered; setae on scapes and legs short, semiappressed.

Rostrum (fig. 14-15) 1.08-1.13× as long as wide, at basal part subparallel-sided, then slightly enlarging anteriorly, at base as wide as at apex. Epifrons at base narrowest, 0.45-0.52× as wide as rostrum at proper place, distinctly enlarged anteriorly with slightly concave sides, dorsally flat with slender median longitudinal stria reaching behind eyes. Eyes almost flat, not prominent from outline of head, distance between them twice longer than width of antennal club. Head behind eyes slightly longer than diameter of eyes, enlarging posteriorly.

Antennae with short, very slender scapes, slightly curved at base and only weakly enlarged apical part, at tip only 0.6× as wide as club; segment 1 2.0-2.2× as long as wide and 1.5-1.6× as long as segment 2, this is 1.7-1.9× as long as wide, segment 3 0.9× as long as wide; segment 4 0.8× as long as wide; segment 5 0.8× as long as wide; segment 6 0.6-0.7× as long as wide; segment 7 0.4-0.5× as long as wide; clubs 1.6-1.7× as long as wide.

Pronotum (fig. 6) 1.13-1.22× as wide as long, widest at midlength, with distinctly rounded sides, more tapering anteriorly than posteriorly; disc regularly domed, indistinctly granulated.

Elytra (fig. 6) oviform, in males 1.41-1.47×, in females 1.31-1.36× as long as wide, widest at apical third, behind base constricted, broadly rounded apically. Striae narrowly punctuate; interstriae wide, flat.

Legs. Protibiae (fig. 20) slender, laterally straight, only just before tip slightly curved inside, mesally enlarged, apically rounded fringed by dense yellowish setae; with distinct tooth before midlength and 7-9 small unequal brownish denticles at inner margin of apical half. Tarsi with segment 2 0.7-0.8× as long as wide; segment 3 0.7-0.8× as long as wide; onychium as long as segment 3.

Type material was not dissected, male and female terminalia were not examined.

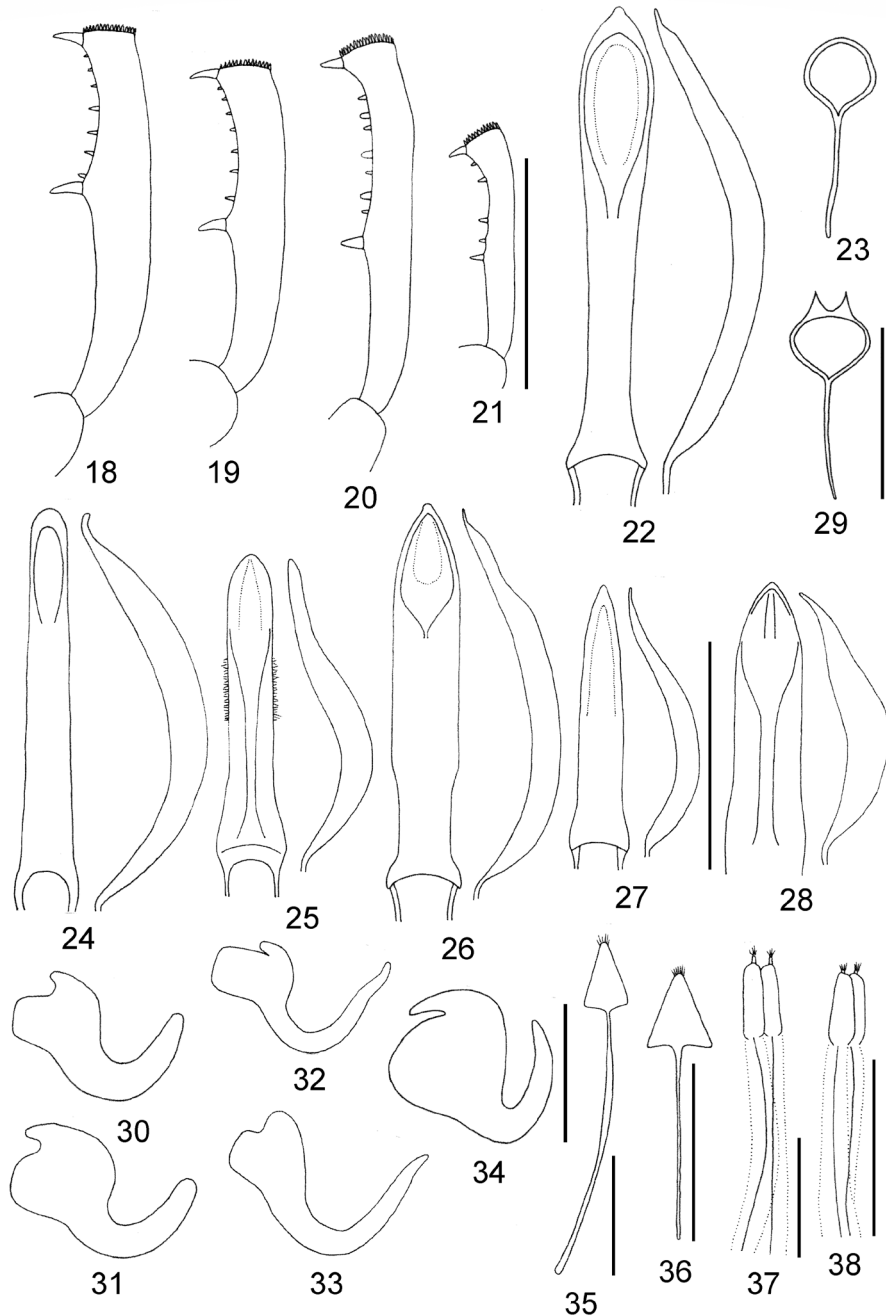


Fig. 18-38. – *Scolochirus*, *Pseudoscolochirus*, morphological details. – 18-21, Right protibia: 18, *S. armipes* Marshall; 19, *S. camerunensis* n. sp.; 20, *P. nimbaensis* Hoffmann; 21, *P. longirostris* n. sp. – 22-23, *S. armipes* Marshall: 22, penis, dorsal and lateral view; 23, tegmen. – 24-28, Penis, dorsal and lateral view: 24, *S. biovatus* (Hustache); 25, *S. camerunensis* n. sp.; 26, *S. dentipes* (Hustache); 27, *S. horridus* Marshall; 28, *P. longirostris* n. sp. – 29, *P. longirostris* n. sp., tegmen. – 30-34, Spermatheca: 30, *S. armipes* Marshall; 31, *S. biovatus* (Hustache); 32, *S. camerunensis* n. sp.; 33, *S. dentipes* (Hustache); 34, *S. horridus* Marshall. – 35-36, Female sternite VIII: 35, *S. armipes* Marshall; 36, *P. longirostris* n. sp. – 37-38, Gonocoxites: 37, *S. armipes* Marshall; 38, *P. longirostris* n. sp. Scales: 1 mm for 18-22, 24-28, 35-38; 0.50 mm for 23, 29; 0.25 mm for 30-34.

***Pseudoscolochirus longirostris* n. sp.** (fig. 7, 16-17, 21, 28-29, 36, 38)

<https://zoobank.org/NomenclaturalActs/20A92850-63F3-421C-9F9A-AC800B44EB21>

Type material. – HOLOTYPE: ♂ (HNHM), Ghana: Brong-Ahafo reg. / New Longoro / 130 m, N 8 05 - W 2 01 / Dr. S. Endrődy-Younga [p] // Nr. 84 / netting / 14.X.1965 [p] // Holotypus / *Pseudoscolochirus* / *longirostris* sp. n. / H. Perrin & R. Borovec det. 2023 [p, red label].

PARATYPES: 1 ♂, 1 ♀, same data as holotype, only “Paratypus” (HNHM); 1 ex., Ghana: Northern region / Banda-Nkwanta / 150 m, N 8 22 - W 2 08 // Dr. S. Endrődy-Younga [p] // Nr. 89 / light trap / 7-13.X.1965 [p] // Paratypus / *Pseudoscolochirus* / *longirostris* sp. n. / H. Perrin & R. Borovec det. 2023 [p, red label] (HNHM).

Type locality. – Ghana: Brong-Ahafo reg., New Longoro [8°05'N-2°01'W].

Description. – Body length holotype 3.59 mm, paratypes 3.19-4.53 mm. Body (fig. 7) dark brownish, apical part of rostrum, antennae, tibiae and tarsi reddish brown. The entire dorsal and ventral part of body densely covered with rounded, finely longitudinally striate appressed scales, four or five across interstria width, in majority of body encrustated by soil. Elytra with conspicuous, long, slender erect setae; setae parallel-sided, apically pointed, about as long as width of one interstria, distance between two setae slightly longer than their length, setae on pronotum, head and rostrum five times shorter than elytral ones, only anterior margin of pronotum with row of slightly longer setae, directed anterior and prominent from outline of pronotum.

Rostrum (fig. 16-17) long, by its shape reminds that of *Myorhinini* Marseul, 1863, weevils, in male 1.38×, in females 1.47× as long as wide, at basal third slightly evenly tapering anteriorly, then almost parallel-sided with straight sides, at base almost as wide as at apex, posteriorly continuous with head; in lateral view almost straight, with dorsal margin straight, only at short apical part declined downwards, and with ventral margin slightly sinuous. Epifrons at base very slender, 0.36-0.39× as wide as rostrum in respective part, distinctly enlarged anteriorly with slightly concave sides, dorsally flat with slender median longitudinal stria, not continuing to the head. Frons large, occupying majority of rostral width and reaching posteriorly clearly behind anterior insertions, slightly tapered posteriorly and here continuous with epifrons, squamose, with slender longitudinal median keel. Epistome not differentiated. Mandibles small, not armed with any tooth, not scaled with irregularly scattered setae. Scrobes placed laterally, in dorsal view visible as very narrow parallel furrows in anterior half; in lateral view well visible along entire length as narrow furrows curved downwards in long distance before eyes and reaching ventral margin of rostrum; in ventral view well visible, directed obliquely posteriorly and slightly enlarged, terminating near each other, separated by space clearly slenderer than width of club. Rostrum ventrally and in lateral view glabrous, ventral side with several sparse, semi-appressed slender setae. Head with the whole eye portion narrowed and elongated, as wide as base of rostrum; eyes strongly flattened, in dorsal view not prominent from outline of head; posterior half of head, portion behind eyes, enlarging posteriorly with slightly rounded sides. Eyes dorsally placed, in lateral view placed in dorsal half of head; vertex distinctly subtriangular, slightly domed; eyes nearest in anterior third, distance between them subequal to club width.

Antennae with scapes slender and moderately short, slightly curved at base and only weakly enlarged in very short apical part, at tip only 0.5-0.6× as wide as club; segment 1 1.8-1.9× as long as wide and 1.6× as long as segment 2, which is 1.3-1.4× as long as wide; segments 3-5 isodiametric; segment 6 0.7-0.8× as long as wide; segment 7 0.6-0.7× as long as wide; clubs 1.5-1.6× as long as wide.

Pronotum (fig. 7) 1.05-1.10× as wide as long, widest at midlength, with distinctly rounded sides, weakly constricted behind anterior margin, disc regularly domed, indistinctly flatly granulated, granules covered by appressed scales; base straight; in lateral view vaulted.

Elytra (fig. 7) slender, long oval, in males 1.41-1.44×, in females 1.34× as long as wide, with regularly rounded sides, widest at midlength. Striae distinctly punctuate, space between punctures not deepened; interstriae slightly wider than striae, flat, under vestiture somewhat shiny.

Legs. Protibiae (fig. 21) laterally straight, only at short apical part weakly curved inside, mesally slightly enlarged at apex; inside sinuate, with slender sharp brown tooth on inner margin before midlength and in apical half denticulate with 5-6 unequal brown denticles, mucronate, apically rounded with fringe of pale setae and with short grooming brush from dense pale setae. Tarsi with segment 2 $1.1\times$ as long as wide; segment 3 $0.6\times$ as long as wide; onychium $0.8-0.9\times$ as long as segment 3.

Penis (fig. 28) in ventral view subparallel-sided, apically subtriangular, evenly tapering with slightly rounded sides; tip pointed; in lateral view with dorsal margin irregularly rounded and ventral margin in middle portion almost straight, tip slender, short, slightly curved inside; temones about $1.5\times$ as long as body of penis; endophallus with long and slender, U-shaped sclerite.

Spermatheca not examined. Female sternite VIII (fig. 36) with slender and moderately long apodeme, terminating at base of plate, here forming short basal margin; plate slender, subtriangular, slightly longer than wide. Gonocoxites (fig. 38) short, flat, subtrapezoidal, with very short apical styli with tuft of short, fine setae; baculi very long, $3.1\times$ as long as gonocoxites.

Etymology. – The newly described species takes its name from its most conspicuous distinguishing character, long rostrum.

Remarks. – *Pseudoscolochirus longirostris* n. sp. is easily distinguished according to set of characters stated below, in the key.

Key to the *Pseudoscolochirus* species

- Rostrum long, $1.38-1.47\times$ as long as wide. Vertex narrow, as wide as width of antennal club. Head with the whole eye portion narrowed and elongated, as wide as base of rostrum, portion behind eyes, enlarging posteriad with slightly rounded sides. Scrobes in lateral view curved downwards in long distance before eyes and reaching ventral margin of rostrum, in ventral view well visible. Smaller, body size 3.2-4.5 mm *P. longirostris* n. sp.
- Rostrum short, $1.08-1.11\times$ as long as wide. Vertex wider, twice as wide as width of antennal club. Head with rostrum forms one regular cone, slightly enlarging posteriad, wider than base of rostrum. Scrobes in lateral view curved downwards just before eyes, not reaching ventral margin of rostrum. Bigger, body size 5.1-5.9 mm *P. nimbaensis* Hoffmann

CONCLUSION

This study is the first revision of the genera *Scolochirus* and *Pseudoscolochirus*, including examination of all available type material and not identified material of both genera. The present paper contributes to knowledge of the genera by considering the genitalia structures of both sexes for the first time, summarization of transfers of taxa between genera, proposal of one new synonym, the description of two new species and designation of lectotype of four species. Finally, this revision will facilitate the description of putative new species in the future.

ACKNOWLEDGEMENTS. – We would like to thank Max Barclay (BMNH), Michael Geiser (BMNH) and Gyözö Szél (HNHM) for the loan of the specimens important for the study. This research, FR-TAF-4641, GB-TAF-TA4-036 and HU-TAF-2571, received support - for the second author - from the SYNTHESYS+ Project <http://www.synthesys.info/> which is financed by European Community Research Infrastructure Action under the H2020 Integrating Activities Programme, Project number 823827. Many thanks to Pavel Krásenský (Chomutov, Czech Republic) and Christophe Rivier (MNHN, Ensemble Arthropodes terrestres, Paris) for taking the photographs.

REFERENCES

- ALONSO-ZARAZAGA M. A. & LYAL C. H. C., 1999. – *A world catalogue of families and genera of Curculionoidea (Insecta: Coleoptera) (Excepting Scolytidae and Platypodidae)*. Barcelona : Entomopraxis S.C.P. Edition, 315 p.

- BOROVEC R., 2023. – Revision of the genus *Euonychus*, with description of a new genus *Wanatius* and three new species (Coleoptera: Curculionidae: Entiminae: Cneorhinini). *Klapalekiana*, **59** : 21-40.
- HOFFMANN A., 1963. – La réserve naturelle intégrale du Mont Nimba. Coleoptera Curculionidae (Deuxième note). *Mémoires de l'Institut Français d'Afrique Noire*, **66** : 309-336.
- HOFFMANN A., 1966. – Coléoptères Curculionides nuisibles au Cacaoyer, en Côte d'Ivoire. *Bulletin de l'Institut français de l'Afrique noire*, (A) **28** (3) : 998-1007.
- HOFFMANN A., 1968. – The Scientific Results of the Hungarian Soil Zoological Expedition to the Brazzaville-Congo. 32. Espèces de la famille Curculionidae (Coleoptera). *Opuscula Zoologica*, **8** (1) : 11-29.
- HUSTACHE A., 1920. – Curculionidés nouveaux de l'Afrique tropicale. Première Partie. *Annales de la Société Linnéenne de Lyon*, **66** : 45-68. <https://doi.org/10.3406/linly.1920.14587>
- HUSTACHE A., 1936. – Nouveaux Curculionides d'Afrique. *Sborník Entomologického Oddělení Národního Musea v Praze*, **14** : 13-43.
- LAMOTTE M. & ROY R., 1998. – La faune et le peuplement du Mont Nimba (p. 81-132). In : Lamotte M. (coord.), *Le Mont Nimba, Réserve de la Biosphère et site du patrimoine mondial (Guinée et Côte d'Ivoire). Initiation à la géomorphologie et à la biogéographie*. Paris : UNESCO, 153 p.
- LAMOTTE M. & ROY R., 2003. – Inventaire et originalité du peuplement animal de la prairie d'altitude du Nimba (p. 51-105). In : *Le peuplement animal du mont Nimba (Guinée, Côte d'Ivoire, Liberia)*. *Mémoires du Muséum national d'Histoire naturelle*, Tome 190. Publications scientifiques du Muséum.
- MARSHALL G. A. K., 1944. – New injurious Curculionidae from Africa (Col.). *Bulletin of Entomological Research*, **35** (1) : 43-48. <https://doi.org/10.1017/S0007485300005617>
- MARSHALL G. A. K., 1951. – New Curculionidae (Col.) from French West Africa. *Bulletin de l'Institut Français d'Afrique Noire*, **13** : 319-325.
- MARSHALL G. A. K., 1954. – La réserve naturelle intégrale du Mont Nimba. XV. Coléoptères Curculionides. *Mémoires de l'Institut français d'Afrique noire*, **40** : 201-205.
- OBERPRIELER R. G., ANDERSON R. S. & MARVALDI A. E., 2014. – 3. Curculionoidea Latreille, 1802: Introduction, Phylogeny (p. 285-300). In : Leschen R. A. B. & Beutel R. G. (eds), *Handbook of Zoology, Arthropoda: Insecta; Coleoptera, Beetles, Volume 3 : Morphology and Systematics (Phytophaga)*. Berlin/Boston : Walter de Gruyter, 675 p. <https://doi.org/10.1515/9783110274462.285>
-