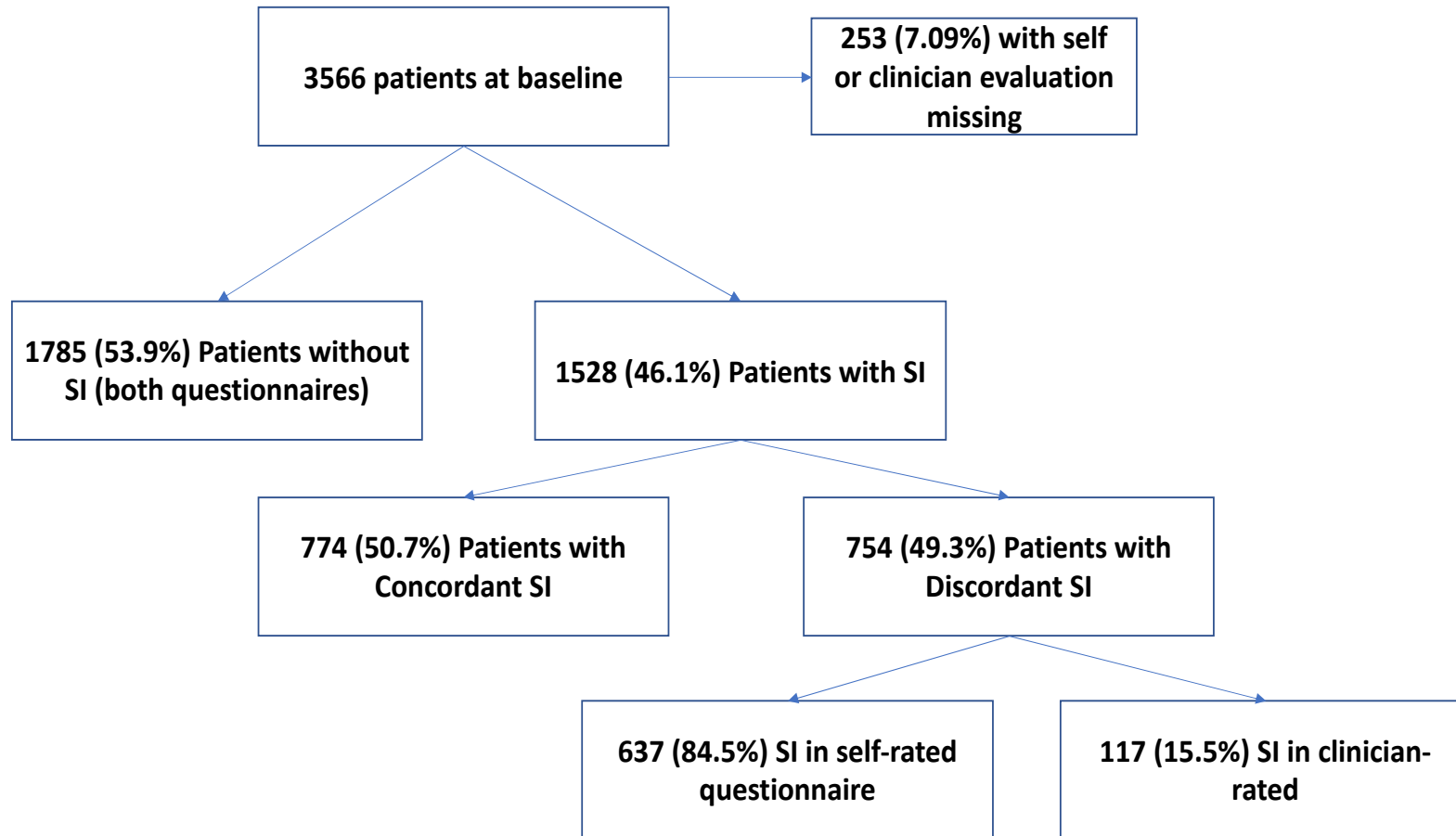
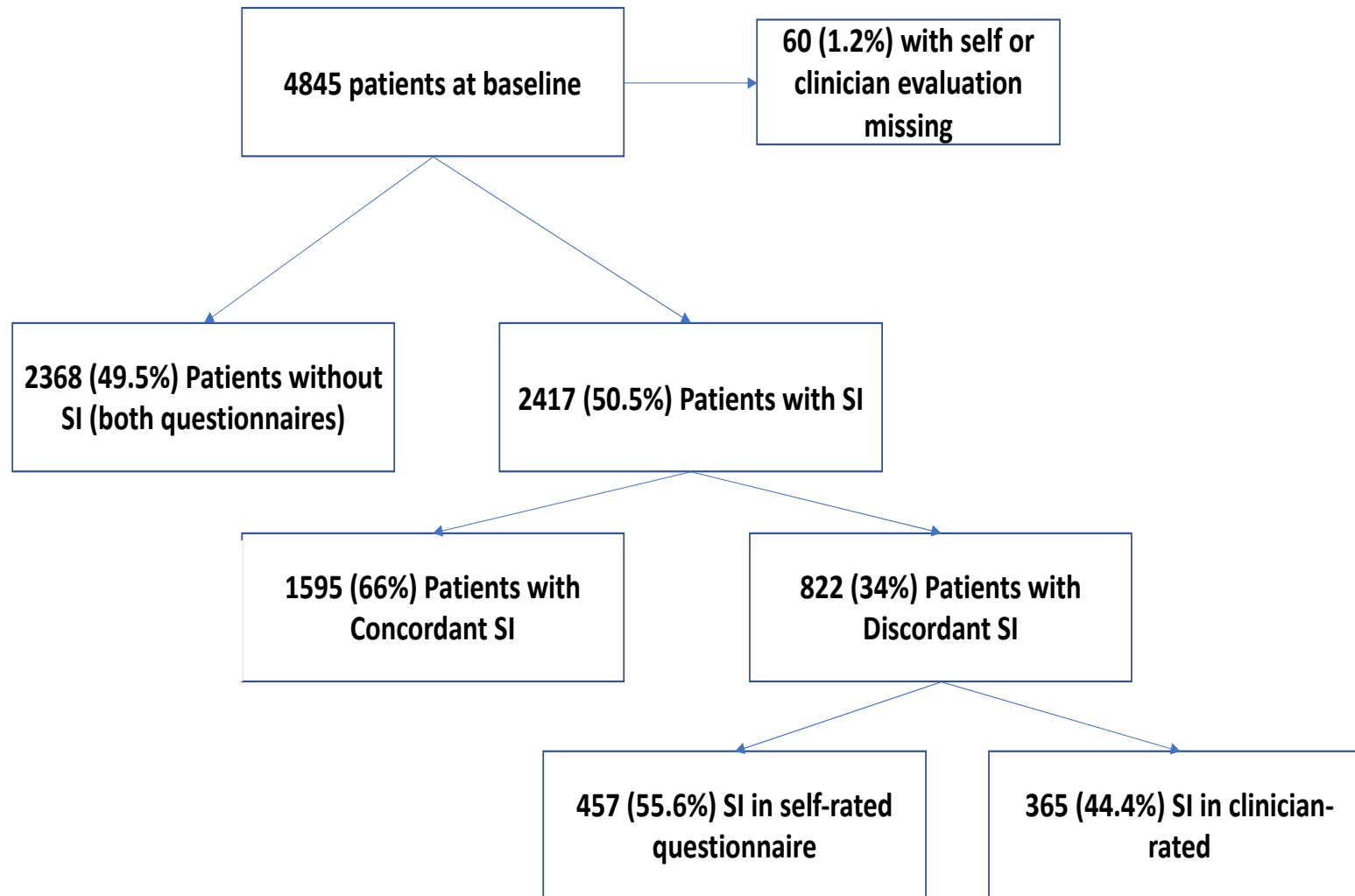


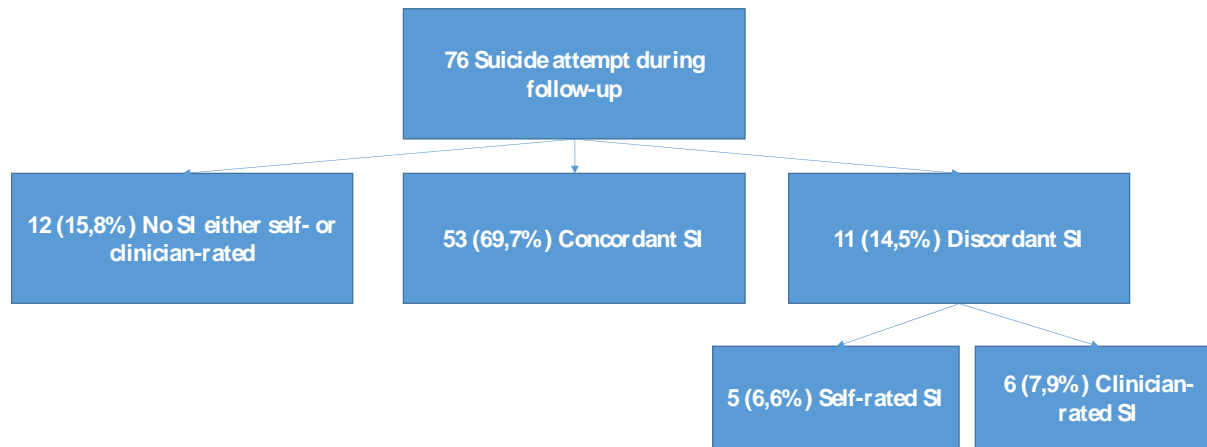
Suppl Mat Figure 1A: Flowcharts of patients' selection in the GENESE cohort



Suppl Mat Figure 1B: Flowcharts of patients' selection in the LUEUR cohort



Suppl Mat Figure 2: Flowchart of suicide attempts during follow-up according to SI assessment at baseline in the LUEUR cohort



Suppl Mat Table 1A: ROC analysis of depression remission at week 6 weeks in function of the suicidal ideation rating at baseline (self- or/and clinician-rated) in the GENESE cohort

Model	Sensitivity	Specificity	Positive Predictive Value	Negative Predictive Value	Accuracy
No remission ~ clinician-rated SI	0.30	0.76	0.55	0.53	0.53
No remission ~ clinician-rated SI (adjusted)	0.58	0.54	0.54	0.57	0.56
No remission ~ patient-rated SI	0.46	0.59	0.53	0.53	0.53
No remission ~ patient-rated SI (adjusted)	0.51	0.60	0.55	0.56	0.56
No remission ~ concordant SI	0.50	0.56	0.53	0.54	0.53
No remission ~ concordant SI (adjusted)	0.51	0.59	0.55	0.56	0.55

Adjusted for age, sex, Lifetime SA, HADS-Anxiety and HADS-Depression. Threshold chosen with the maximum geometric mean between Sensitivity and Specificity.

Suppl Mat Table 1B: ROC analysis of depression remission at week 6 in function of the suicidal ideation rating at baseline (self- or/and clinician-rated SI) in the LUEUR cohort

Model	Sensitivity	Specificity	Positive Predictive Value	Negative Predictive Value	Accuracy
No remission ~ clinician-rated SI	0.46	0.63	0.56	0.53	0.54
No remission ~ clinician-rated SI (adjusted)	0.58	0.56	0.58	0.56	0.57
No remission ~ patient-rated SI	0.48	0.60	0.55	0.49	0.54
No remission ~ patient-rated SI (adjusted)	0.56	0.57	0.57	0.56	0.57
No remission ~ concordant SI	0.55	0.52	0.55	0.53	0.54

No remission ~ concordant SI (adjusted)	0.56	0.57	0.57	0.56	0.56
---	------	------	------	------	------

Adjusted for age, sex, Lifetime SA, HADS-Anxiety and HADS-Depression. Threshold chosen with the maximum geometric mean between Sensitivity and Specificity.

Suppl Mat Table 2: ROC analysis of the risk of SA at week 6 in function of the suicidal ideation rating at baseline (self- or/and clinician-rated) in the LUEUR cohort

Model	Sensitivity	Specificity	Positive Predictive Value	Negative Predictive Value	Accuracy
SA ~ clinician-rated SI	0.78	0.59	0.03	0.99	0.59
SA ~ clinician-rated SI (adjusted)	0.69	0.72	0.04	0.99	0.72
SA ~ patient-rated SI	0.76	0.57	0.03	0.99	0.57
SA ~ patient-rated SI (adjusted)	0.72	0.67	0.04	0.99	0.67
SA ~ concordant SI	0.84	0.49	0.03	0.99	0.50
SA ~ concordant SI (adjusted)	0.73	0.67	0.04	0.99	0.67

Adjusted for age, sex, Lifetime SA, HADS-Anxiety and HADS-Depression. Threshold chosen with the maximum geometric mean between Sensitivity and Specificity.

Suppl Mat Table 3A: Sociodemographic and clinical characteristics of patients without SI (self- and clinician-rated), patients with concordant SI, and patients with only self-rated SI in the GENESE cohort

Variables	Without SI, 1,785 ^a	SI self-rated, 637 ^a	Concordant SI, 7741 ^a	Global <i>p</i> -value	Without SI vs Concordant SI			Without SI vs SI self-rated			Concordant SI vs SI self-rated		
					OR ^b	95% CI ^b	<i>p</i> -value	OR ^b	95% CI ^b	<i>p</i> -value	OR ^b	95% CI ^b	<i>p</i> -value
Sex				0.8									
<i>Men</i>	682 (38 %)	235 (37 %)	299 (39 %)										
<i>Women</i>	1,103 (62 %)	402 (63 %)	475 (61 %)										
Age	49 (15)	50 (15)	49 (15)	0.033	1	1.00, 1.01	0.3	1.01	1.00, 1.01	0.01	1.01	1.00, 1.01	0.2
Marital status				>0.9									
<i>In couple</i>	1,444 (81 %)	519 (82 %)	631 (82 %)										
<i>Single</i>	333 (19 %)	116 (18 %)	140 (18 %)										
Study level				0.071									
<i>Secondary school</i>	1,006 (57 %)	354 (56 %)	398 (52 %)										
<i>Below secondary school</i>	763 (43 %)	278 (44 %)	368 (48 %)		1.22	1.03, 1.45	0.022	1.04	0.86, 1.24	0.7	0.85	0.69, 1.05	0.13
Professional activity				< 0.001									
<i>Yes</i>	1,015 (57 %)	330 (52 %)	381 (50 %)		—	—		—	—		—	—	
<i>No</i>	753 (43 %)	304 (48 %)	382 (50 %)		1.35	1.14, 1.60	< 0.001	1.24	1.03, 1.49	0.02	0.92	0.74, 1.13	0.4
Current MDE duration				0.011									
<2	619 (35 %)	186 (30 %)	240 (32 %)		—	—		—	—		—	—	

Variables	Without SI, 1,785 ^a	SI self-rated, 637 ^a	Concordant SI, 7741 ^a	Global <i>p-value</i>	<i>Without SI vs Concordant SI</i>			<i>Without SI vs SI self-rated</i>			<i>Concordant SI vs SI self-rated</i>		
					OR ^b	95% CI ^b	<i>p-value</i>	OR ^b	95% CI ^b	<i>p-value</i>	OR ^b	95% CI ^b	<i>p-value</i>
<i>months</i>													
2-6 months	712 (41 %)	263 (42 %)	295 (39 %)		1.07	0.87, 1.31	0.5	1.23	0.99, 1.53	0.062	1.15	0.89, 1.48	0.3
>6 months	417 (24 %)	177 (28 %)	219 (29 %)		1.35	1.09, 1.69	0.007	1.41	1.11, 1.80	0.005	1.04	0.79, 1.37	0.8
First MDE				<0.001									
No	711 (40 %)	310 (49 %)	412 (53 %)		—	—		—	—		—	—	
Yes	1,068 (60 %)	326 (51 %)	360 (47 %)		0.58	0.49, 0.69	<0.001	0.7	0.58, 0.84	<0.001	1.2	0.98, 1.49	0.084
Number of MDE	1.01 (1.96)	1.40 (2.15)	1.64 (2.58)	<0.001	1.13	1.09, 1.18	<0.001	1.09	1.04, 1.14	<0.001	0.96	0.91, 1.00	0.061
Age at first MDE	37 (14)	37 (15)	34 (13)	0.023	0.99	0.98, 1.00	0.01	1	0.99, 1.01	>0.9	1.01	1.00, 1.02	0.03
Lifetime SA				<0.001									
No	1,630 (94 %)	531 (86 %)	571 (75 %)		—	—		—	—		—	—	
Yes	106 (6.1 %)	84 (14 %)	187 (25 %)		5.04	3.90, 6.53	<0.001	2.43	1.79, 3.29	<0.001	0.48	0.36, 0.64	<0.001
Number of SA	1.41 (0.98)	1.50 (1.54)	1.95 (1.84)	0.006	1.31	1.09, 1.62	0.007	1.06	0.84, 1.34	0.6	0.84	0.69, 0.99	0.055
MADRS-Sleep (Clinician-rated)				<0.001									
<3	472 (27 %)	110 (17 %)	79 (10 %)		—	—		—	—		—	—	
≥3	1,308 (73 %)	526 (83 %)	688 (90 %)		3.14	2.45, 4.08	<0.001	1.73	1.37, 2.18	<0.001	0.55	0.40, 0.75	<0.001
MADRS-Sleep (Self-rated)				<0.001									
<3	599 (34 %)	110 (17 %)	111 (14 %)		—	—		—	—		—	—	
≥3	1,180 (66 %)	522 (83 %)	660 (86 %)		3.02	2.42, 3.79	<0.001	2.41	1.92, 3.04	<0.001	0.8	0.60, 1.06	0.12
HADS-	13.2 (3.4)	14.5 (3.3)	15.2 (3.5)	<0.001	1.19	1.16, 1.22	<0.001	1.12	1.09, 1.15	<0.001	0.94	0.91, 0.97	<0.001

Variables	Without SI, 1,785 ^a	SI self-rated, 637 ^a	Concordant SI, 7741 ^a	Global <i>p</i> -value	Without SI vs Concordant SI			Without SI vs SI self-rated			Concordant SI vs SI self-rated		
					OR ^b	95% CI ^b	<i>p</i> -value	OR ^b	95% CI ^b	<i>p</i> -value	OR ^b	95% CI ^b	<i>p</i> -value
Anxiety													
HADS-Agitation	5.72 (1.62)	6.22 (1.80)	5.99 (1.66)	< 0.001	1.20	1.14, 1.26	< 0.001	1.11	1.05, 1.17	< 0.001	0.93	0.87, 0.98	0.012
HADS-Psychic anxiety	7.52 (2.44)	9.01 (2.33)	8.51 (2.30)	< 0.001	1.30	1.25, 1.35	< 0.001	1.19	1.14, 1.24	< 0.001	0.91	0.87, 0.95	< 0.001
HADS-Depression	13.2 (3.7)	14.7 (3.6)	15.7 (3.6)	< 0.001	1.21	1.18, 1.25	< 0.001	1.12	1.09, 1.15	< 0.001	0.93	0.90, 0.95	< 0.001
HADS total score	26 (6)	29 (6)	31 (6)	< 0.001	1.15	1.13, 1.17	< 0.001	1.09	1.07, 1.11	< 0.001	0.95	0.93, 0.97	< 0.001
Impulsivity	36 (6)	37 (6)	38 (7)	< 0.001	1.08	1.06, 1.09	< 0.001	1.04	1.03, 1.06	< 0.001	0.97	0.95, 0.98	< 0.001
Associated treatment				< 0.001									
<i>No</i>	910 (51 %)	263 (41 %)	267 (34 %)		—	—		—	—		—	—	
<i>Yes</i>	875 (49 %)	374 (59 %)	507 (66 %)		1.97	1.66, 2.35	< 0.001	1.48	1.23, 1.78	< 0.001	0.75	0.60, 0.93	0.009
Treatment instauration/Change				< 0.001									
<i>Instauration</i>	1480 (83%)	490 (78%)	587 (76%)		—	—		—	—		—	—	
<i>Change</i>	293 (17%)	38 (22%)	181 (24%)		1.56	1.26, 1.92	< 0.001	1.42	1.13, 1.78	0.002	0.91	0.71, 1.17	0.5

^an (% %); Mean (SD)

^bOR = Odds Ratio, CI = Confidence Interval

MDE: Major depressive episode; SA: Suicide attempt; HADS: Hospital Anxiety and Depression Scale; MADRS: Montgomery-Åsberg Depression Rating Scale

Suppl Mat Table 3B: Sociodemographic and clinical characteristics of patients without SI (self- and clinician-rated), patients with concordant SI and patients with only self-rated SI in the LUEUR cohort

Variables	Without SI, 2,368 ^a	SI self- rated, 457 ^a	Concordant SI, 1,595 ^a	Global <i>p</i> -value	Without SI vs Concordant SI			Without SI vs SI self-rated			Concordant SI vs SI self-rated		
					OR ^b	95% CI ^b	<i>p</i> -value	OR ^b	95% CI ^b	<i>p</i> -value	OR ^b	95% CI ^b	<i>p</i> -value
Sex				0.4									
<i>Men</i>	857 (36 %)	161 (35 %)	607 (38 %)										
<i>Women</i>	1,511 (64 %)	296 (65 %)	988 (62 %)										
Age	47 (14)	48 (14)	47 (14)	0.7									
Marital status				0.6									
<i>In couple</i>	1,939 (82 %)	383 (84 %)	1,317 (83 %)										
<i>Single</i>	416 (18 %)	71 (16 %)	274 (17 %)										
Living alone				<0.001									
<i>No</i>	1,586 (68 %)	293 (65 %)	964 (61 %)		—	—		—	—		—	—	
<i>Yes</i>	756 (32 %)	159 (35 %)	606 (39 %)		1.32	1.15, 1.51	<0.001	1.14	0.92, 1.40	0.2	0.86	0.69, 1.07	0.2
Study level				0.2									
<i>Secondary school</i>	1,415 (60 %)	266 (59 %)	906 (57 %)										
<i>Below secondary school</i>	931 (40 %)	187 (41 %)	673 (43 %)										
Professional activity				<0.001									
<i>Yes</i>	1,344 (60 %)	262 (61 %)	784 (52 %)		—	—		—	—		—	—	
<i>No</i>	898 (40 %)	171 (39 %)	730 (48 %)		1.39	1.22, 1.59	<0.001	0.98	0.79, 1.20	0.8	0.7	0.56, 0.87	0.001
Current MDE duration	8.0 (20.2)	7.3 (9.6)	7.8 (12.1)	0.6									

Variables	Without SI, 2,368 ^a	SI self- rated, 457 ^a	Concordant SI, 1,595 ^a	Global <i>p</i> -value	Without SI vs Concordant SI			Without SI vs SI self-rated			Concordant SI vs SI self-rated		
					OR ^b	95% CI ^b	<i>p</i> -value	OR ^b	95% CI ^b	<i>p</i> -value	OR ^b	95% CI ^b	<i>p</i> -value
Number of lifetime MDE	1.35 (6.11)	1.07 (1.52)	2.26 (8.81)	<0.001	1.02	1.01, 1.03	<0.001	0.99	0.95, 1.01	0.4	0.87	0.81, 0.94	<0.001
Age at first MDE	36 (13)	35 (12)	33 (12)	<0.001	0.99	0.98, 0.99	<0.001	1	0.99, 1.01	0.7	1.01	1.00, 1.02	0.040
Alcohol abuse				0.039									
<i>No</i>	2,243 (95 %)	433 (95 %)	1,481 (93 %)		—	—		—	—		—	—	
<i>Yes</i>	116 (4.9 %)	23 (5.0 %)	108 (6.8 %)		1.41	1.08, 1.85	0.013	1.03	0.63, 1.59	>0.9	0.73	0.45, 1.14	0.2
Lifetime SA				<0.001									
<i>No</i>	2,161 (91 %)	386 (84 %)	1,067 (67 %)		—	—		—	—		—	—	
<i>Yes</i>	203 (8.6 %)	71 (16 %)	522 (33 %)		5.21	4.37, 6.23	<0.001	1.96	1.46, 2.61	<0.001	0.38	0.28, 0.49	<0.001
HADS-Anxiety	13.4 (3.3)	14.6 (3.2)	15.6 (3.3)	<0.001	1.22	1.19, 1.24	<0.001	1.11	1.08, 1.15	<0.001	0.91	0.88, 0.94	<0.001
HADS-Agitation	7.19 (1.34)	7.05 (1.34)	7.08 (1.36)	0.006	0.93	0.88, 0.97	0.002	0.94	0.87, 1.02	0.12	1.02	0.94, 1.10	0.7
HADS-Psychic anxiety	8.70 (1.60)	8.05 (1.43)	8.37 (1.57)	<0.001	0.75	0.72, 0.79	<0.001	0.88	0.82, 0.93	<0.001	1.16	1.08, 1.24	<0.001
HADS-Depression	13.9 (3.6)	15.2 (3.4)	16.9 (3.2)	<0.001	1.29	1.27, 1.32	<0.001	1.12	1.08, 1.15	<0.001	0.86	0.83, 0.89	<0.001
HADS Total score	27.3 (5.7)	29.8 (5.3)	32.5 (5.3)	<0.001	1.18	1.17, 1.20	<0.001	1.08	1.06, 1.10	<0.001	0.91	0.89, 0.93	<0.001
Hopelessness	14.9 (4.1)	16.4 (3.3)	17.4 (2.7)	<0.001	1.26	1.23, 1.29	<0.001	1.12	1.09, 1.16	<0.001	0.89	0.86, 0.92	<0.001
Associated treatment				<0.001									
<i>No</i>	2,108 (90 %)	385 (85 %)	1,172 (76 %)		—	—		—	—		—	—	
<i>Yes</i>	247 (10 %)	68 (15 %)	376 (24 %)		2.74	2.30, 3.27	<0.001	1.51	1.12, 2.00	0.005	0.55	0.41, 0.73	<0.001
Treatment instauration/Ch				<0.001									

Variables	Without SI, 2,368 ^a	SI self- rated, 457 ^a	Concordant SI, 1,595 ^a	Global <i>p-value</i>	<i>Without SI vs Concordant SI</i>			<i>Without SI vs SI self-rated</i>			<i>Concordant SI vs SI self-rated</i>		
					OR ^b	95% CI ^b	<i>p-value</i>	OR ^b	95% CI ^b	<i>p-value</i>	OR ^b	95% CI ^b	<i>p-value</i>
age													
<i>n</i>													
<i>Instauratio</i>	1959 (85%)	375 (0.84%)	1114 (72%)										
<i>Change</i>	350 (15%)	73 (16%)	431 (28%)		2.17	1.85, 2.54	<0.001	1.09	0.82, 1.43	0.5	0.50	0.38, 0.66	<0.001

^an (% %); Mean (SD)

^bOR = Odds Ratio, CI = Confidence Interval

MDE: Major depressive episode; SA: Suicide attempt; HADS: Hospital Anxiety and Depression Scale; MADRS: Montgomery-Åsberg Depression Rating Scale

Suppl Mat Table 4A: Sociodemographic and clinical characteristics of patients without SI (self- and clinician-rated), patients with concordant SI and patients with only self-rated SI in the GENESE cohort (multivariate analysis)

Variables	<i>p-value</i>	<i>Without SI vs Concordant SI</i>			<i>Without SI vs SI self-rated</i>			<i>Concordant SI vs SI self-rated</i>		
		OR ^a	95% CI ^a	<i>p-value</i>	OR ^a	95% CI ^a	<i>p-value</i>	OR ^a	95% CI ^a	<i>p-value</i>
Age	0.2									
Professional activity	0.6									
<i>Yes</i>										
<i>No</i>										
Current MDE duration	0.2									
<i><2 months</i>										
<i>2-6 months</i>										
<i>>6 months</i>										

Variables	<i>p-value</i>	<i>Without SI vs Concordant SI</i>			<i>Without SI vs SI self-rated</i>			<i>Concordant SI vs SI self-rated</i>		
		OR ^a	95% CI ^a	<i>p-value</i>	OR ^a	95% CI ^a	<i>p-value</i>	OR ^a	95% CI ^a	<i>p-value</i>
First MDE	0.005									
<i>No</i>		—	—		—	—		—	—	
<i>Yes</i>		0.75	0.60, 0.93	0.010	0.76	0.61, 0.95	0.014	1.03	0.80, 1.32	0.8
Lifetime SA	<0.001									
<i>No</i>		—	—		—	—		—	—	
<i>Yes</i>		4.10	2.98, 5.68	<0.001	2.01	1.41, 2.86	<0.001	0.49	0.35, 0.68	<0.001
MADRS- Sleep (Clinician-rated)	<0.001									
<i><3</i>		—	—		—	—		—	—	
<i>≥3</i>		2.25	1.68, 3.04	<0.001	1.54	1.19, 2.01	0.001	0.69	0.49, 0.98	0.041
HADS-Anxiety	<0.001	1.09	1.05, 1.13	<0.001	1.07	1.04, 1.11	<0.001	0.98	0.94, 1.02	0.4
HADS-Depression	<0.001	1.16	1.13, 1.20	<0.001	1.09	1.05, 1.12	<0.001	0.93	0.90, 0.96	<0.001
Impulsivity	0.024	1.02	1.00, 1.04	0.018	1.01	0.99, 1.03	0.3	0.98	0.96, 1.00	0.11
Associated treatment	0.007									
<i>No</i>		—	—		—	—		—	—	
<i>Yes</i>		1.34	1.08, 1.65	0.007	1.22	0.99, 1.50	0.061	0.87	0.68, 1.11	0.3

^a OR = Odds Ratio, CI = Confidence Interval

MDE: Major depressive episode; SA: Suicide attempt; HADS: Hospital Anxiety and Depression Scale; MADRS: Montgomery-Åsberg Depression Rating Scale

Suppl Mat Table 4B: Sociodemographic and clinical characteristics of patients without SI (self- and clinician-rated), patients with concordant SI and patients with only self-rated SI in the LUEUR cohort (multivariate analysis)

Variables	<i>Without SI vs Concordant SI</i>			<i>Without SI vs SI self-rated</i>			<i>Concordant SI vs SI self-rated</i>			
	<i>p-value</i>	OR ^a	95% CI ^a	<i>p-value</i>	OR ^a	95% CI ^a	<i>p-value</i>	OR ^a	95% CI ^a	<i>p-value</i>
Living alone	0.029									
No		—	—		—	—		—	—	
Yes		1.23	1.04, 1.45	0.017	1.13	0.89, 1.42	0.3	0.86	0.67, 1.10	0.2
Professional activity	0.3									
Yes										
No										
Alcohol abuse	>0.9									
No										
Yes										
Lifetime SA	<0.001									
No		—	—		—	—		—	—	
Yes		3.70	2.99, 4.60	<0.001	1.83	1.31, 2.51	<0.001	0.46	0.34, 0.62	<0.001
HADS-Anxiety	<0.001	1.10	1.07, 1.13	<0.001	1.06	1.02, 1.09	0.003	0.95	0.91, 0.99	0.007
HADS-Depression	<0.001	1.17	1.14, 1.21	<0.001	1.05	1.01, 1.09	0.013	0.89	0.85, 0.92	<0.001
Hopelessness	<0.001	1.13	1.10, 1.16	<0.001	1.08	1.04, 1.12	<0.001	0.95	0.91, 0.99	0.021

Associated treatment	<0.001								
No	—	—	—	—	—	—	—	—	—
Yes	1.93	1.54, 2.40	<0.001	1.34	0.96, 1.84	0.081	0.66	0.47, 0.90	0.010

^a OR = Odds Ratio, CI = Confidence Interval

MDE: Major depressive episode; SA: Suicide attempt; HADS: Hospital Anxiety and Depression Scale; MADRS: Montgomery-Åsberg Depression Rating Scale

Suppl Mat Table 5A: Remission of depression at week 6 in patients without SI (self- and clinician-rated) vs patients with concordant SI vs patients with only self-rated SI in the GENESE cohort

Variables	Model 0					Model 1		
	Remission of depression		OR ^a	95% CI ^a	<i>p</i> -value	OR ^a	95% CI ^a	<i>p</i> -value
	No	Yes						
Suicidal ideation								
No SI	738 (46.5%)	850 (53.5%)	—	—	—	—	—	—
Concordant SI	390 (54.9%)	320 (45.1%)	1.40	1.18, 1.68	<0.001	1.18	0.96, 1.45	0.12
Self-rated SI	293 (49.7%)	296 (50.3%)	1.14	0.94, 1.38	0.2	1.05	0.85, 1.29	0.7

^aOR = Odds Ratio, CI = Confidence Interval

Model 0: Crude association

Model 1: Adjusted for age, sex, first MDE, Lifetime SA, MADRS-Sleep (clinician-rated), HADS-Anxiety, HADS-Depression, Impulsivity, and Associated treatment

Suppl Mat Table 5B: Remission of depression at week 6 in patients without SI (self- and clinician-rated) vs patients with concordant SI vs patients with only self-rated SI in the LUEUR cohort

Variables	Remission of depression		Model 0			Model 1		
	No	Yes	OR ^a	95% CI ^a	p-value	OR ^a	95% CI ^a	p-value
Suicidal ideation								
No SI	977 (46.7%)	1117 (53.3%)				—	—	
Concordant SI	845 (57.4%)	628 (42.6%)	1.54	1.35, 1.76	<0.001	1.29	1.10, 1.52	0.002
Self-rated SI	205 (47.9%)	223 (52.1%)	1.05	0.85, 1.29	0.6	0.95	0.76, 1.19	0.7

^aOR = Odds Ratio, CI = Confidence Interval

Model 0: Crude association

Model 1: Adjusted for age, sex, number of lifetime MDE, Lifetime SA, Hopelessness, HADS-Anxiety, HADS-Depression, and Associated treatment

Suppl Mat Table 6: Risk of suicide attempt at week 6 in patients without SI (self- and clinician-rated) vs patients with concordant SI vs patients with only self-rated SI in the LUEUR cohort

Variables	Model 0					Model 1		
	SA during follow-up		OR ^a	95% CI ^a	p-value	OR ^a	95% CI ^a	p-value
	No	Yes						
Suicidal ideation								
No SI	2115 (99.4%)	12 (0.6%)				—	—	
Concordant SI	1427 (96.4%)	53 (3.6%)	6.55	3.61, 12.9	<0.001	3.73	1.82, 8.22	<0.001
Self-rated SI	417 (98.8%)	5 (1.2%)	2.11	0.67, 5.73	0.2	0.75	0.12, 2.86	0.7

^aOR = Odds Ratio, CI = Confidence Interval

Model 0: Crude association

Model 1: Adjusted for age, sex, alcohol abuse, number of lifetime MDE, Lifetime SA, Hopelessness, HADS-Anxiety, HADS-Depression, and Associated treatment

Suppl Mat Table 7A: Sociodemographic and clinical characteristics of patients without SI (self- and clinician-rated), patients with concordant SI and patients with only clinician-rated SI in the GENESE cohort

Variables	Without SI, 1,785 ^a	SI clinician- rated, 117 ^a	Concordant SI, 774 ^a	Global <i>p</i> -value	Without SI vs Concordant SI			Without SI vs SI clinician- rated			Concordant SI vs SI clinician- rated		
					OR ^b	95% CI ^b	<i>p</i> -value	OR ^b	95% CI ^b	<i>p</i> -value	OR ^b	95% CI ^b	<i>p</i> -value
Sex				0.7									
Men	682 (38 %)	49 (42 %)	299 (39 %)										
Women	1,103 (62 %)	68 (58 %)	475 (61 %)										
Age	49 (15)	48 (14)	49 (15)	0.5									
Marital status				0.9									
In couple	1,444 (81 %)	97 (83 %)	631 (82 %)										
Single	333 (19 %)	20 (17 %)	140 (18 %)										
Study level				0.068									
Secondary school	1,006 (57 %)	67 (57 %)	398 (52 %)		—	—		—	—		—	—	
Below secondary school	763 (43 %)	50 (43 %)	368 (48 %)		1.22	1.03, 1.45	0.022	0.98	0.67, 1.43	>0.9	0.81	0.54, 1.19	0.3
Professional activity				0.002									
Yes	1,015 (57 %)	65 (56 %)	381 (50 %)		—	—		—	—		—	—	
No	753 (43 %)	51 (44 %)	382 (50 %)		1.35	1.14, 1.60	< 0.001	1.06	0.72, 1.54	0.8	0.78	0.53, 1.16	0.2
Current MDE duration				0.058									
<2 months	619 (35 %)	35 (31 %)	240 (32 %)		—	—		—	—		—	—	
2-6 months	712 (41 %)	43 (38 %)	295 (39 %)		1.07	0.87, 1.31	0.5	1.07	0.68, 1.70	0.8	1	0.62, 1.62	>0.9
>6 months	417 (24 %)	34 (30 %)	219 (29 %)		1.35	1.09, 1.69	0.007	1.44	0.88, 2.35	0.14	1.06	0.64, 1.77	0.8

Variables	Without SI, 1,785 ^a	SI clinician- rated, 117 ^a	Concordant SI, 774 ^a	Global <i>p</i> -value	Without SI vs Concordant SI			Without SI vs SI clinician- rated			Concordant SI vs SI clinician- rated		
					OR ^b	95% CI ^b	<i>p</i> -value	OR ^b	95% CI ^b	<i>p</i> -value	OR ^b	95% CI ^b	<i>p</i> -value
First MDE				<0.001									
<i>No</i>	711 (40 %)	56 (48 %)	412 (53 %)		—	—		—	—		—	—	
<i>Yes</i>	1,068 (60 %)	61 (52 %)	360 (47 %)		0.58	0.49, 0.69	<0.001	0.73	0.50, 1.06	0.093	1.25	0.84, 1.84	0.3
Number of MDE	1.01 (1.96)	1.73 (5.05)	1.64 (2.58)	<0.001	1.13	1.09, 1.18	<0.001	1.08	1.02, 1.14	0.007	1.01	0.94, 1.07	0.8
Age at first MDE	37 (14)	36 (12)	34 (13)	0.033	0.99	0.98, 1.00	0.01	1	0.98, 1.02	0.8	1.01	0.99, 1.03	0.4
Lifetime SA				<0.001									
<i>No</i>	1,630 (94 %)	89 (82 %)	571 (75 %)		—	—		—	—		—	—	
<i>Yes</i>	106 (6.1 %)	20 (18 %)	187 (25 %)		5.04	3.90, 6.53	<0.001	3.46	2.00, 5.73	<0.001	0.69	0.40, 1.12	0.15
Number of SA	1.41 (0.98)	1.86 (2.17)	1.95 (1.84)	0.013	1.31	1.09, 1.62	0.007	1.26	0.90, 1.75	0.2	0.97	0.72, 1.22	0.8
MADRS- Sleep (Clinician-rated)				<0.001									
<3	472 (27 %)	14 (12 %)	79 (10 %)		—	—		—	—		—	—	
≥3	1,308 (73 %)	103 (88 %)	688 (90 %)		3.14	2.45, 4.08	<0.001	2.65	1.56, 4.89	<0.001	0.84	0.47, 1.61	0.6
MADRS-Sleep (Self-rated)				<0.001									
<3	599 (34 %)	48 (41 %)	111 (14 %)		—	—		—	—		—	—	
≥3	1,180 (66 %)	69 (59 %)	660 (86 %)		3.02	2.42, 3.79	<0.001	0.73	0.50, 1.07	0.11	0.24	0.16, 0.37	<0.001
HADS-Anxiety	13.2 (3.4)	13.5 (3.6)	15.2 (3.5)	<0.001	1.19	1.16, 1.22	<0.001	1.02	0.96, 1.08	0.5	0.87	0.83, 0.92	<0.001
HADS-Agitation	5.72 (1.62)	6.22 (1.80)	5.77 (1.63)	<0.001	1.20	1.14, 1.26	<0.001	1.02	0.91, 1.14	0.8	0.87	0.78, 0.97	0.011
HADS-Psychic anxiety	7.52 (2.44)	9.01 (2.33)	7.70 (2.66)	<0.001	1.30	1.25, 1.35	<0.001	1.03	0.95, 1.11	0.4	0.81	0.75, 0.87	<0.001
HADS- Depression	13.2 (3.7)	13.5 (3.8)	15.7 (3.6)	<0.001	1.21	1.18, 1.25	<0.001	1.02	0.97, 1.08	0.4	0.86	0.81, 0.90	<0.001
HADS total score	26 (6)	27 (6)	31 (6)	<0.001	1.15	1.13, 1.17	<0.001	1.01	0.98, 1.05	0.4	0.89	0.86, 0.92	<0.001
Impulsivity	36 (6)	37 (6)	38 (7)	<0.001	1.08	1.06, 1.09	<0.001	1.03	1.00, 1.07	0.038	0.96	0.93, 0.99	0.017
Associated treatment				<0.001									

Variables	Without SI, 1,785 ^a	SI clinician- rated, 117 ^a	Concordant SI, 774 ^a	Global <i>p-value</i>	Without SI vs Concordant SI			Without SI vs SI clinician- rated			Concordant SI vs SI clinician- rated		
					OR ^b	95% CI ^b	<i>p-value</i>	OR ^b	95% CI ^b	<i>p-value</i>	OR ^b	95% CI ^b	<i>p-value</i>
<i>No</i>	910 (51 %)	43 (37 %)	267 (34 %)		—	—		—	—		—	—	
<i>Yes</i>	875 (49 %)	74 (63 %)	507 (66 %)		1.97	1.66, 2.35	<0.001	1.79	1.22, 2.65	0.003	0.91	0.61, 1.37	0.6
Treatment instauration/Chan ge				<0.001									
<i>Instauration</i>	1480 (83%)	88 (77%)	587 (76%)		—	—		—	—		—	—	
<i>Change</i>	293 (17%)	26 (23%)	181 (24%)		1.56	1.26, 1.92	<0.001	1.49	0.93, 2.32	0.085	0.96	0.59, 1.51	0.9

^an (% %); Mean (SD)

^bOR = Odds Ratio, CI = Confidence Interval

MDE: Major depressive episode; SA: Suicide attempt; HADS: Hospital Anxiety and Depression Scale; MADRS: Montgomery-Åsberg Depression Rating Scale

Suppl Mat Table 7B: Sociodemographic and clinical characteristics of patients without SI (self- and clinician-rated), patients with concordant SI and patients with only clinician-rated SI in the LUEUR cohort

Variables	Without SI, 2,368 ^a	SI clinician-rated, 365 ^a	Concordant SI 1,595 ^a	Global <i>p</i> -value	Without SI vs Concordant SI			Without SI vs SI clinician-rated			Concordant SI vs SI clinician-rated		
					OR ^b	95% CI ^b	<i>p</i> -value	OR ^b	95% CI ^b	<i>p</i> -value	OR ^b	95% CI ^b	<i>p</i> -value
Sex				0.4									
<i>Men</i>	857 (36%)	127 (35 %)	607 (38 %)										
<i>Women</i>	1,511 (64%)	238 (65 %)	988 (62 %)										
Age	47 (14)	48 (14)	47 (14)	0.6									
Marital status				0.5									
<i>In couple</i>	1,939 (82%)	291 (80 %)	1,317 (83 %)										
<i>Single</i>	416 (18 %)	73 (20%)	274 (17 %)										
Living alone				<0.001									
<i>No</i>	1,586 (68%)	204 (57%)	964 (61 %)		—	—		—	—		—	—	
<i>Yes</i>	756 (32 %)	156 (43%)	606 (39 %)		1.32	1.15, 1.51	<0.001	1.6	1.28, 2.01	<0.001	1.22	0.96, 1.53	0.1
Study level				0.2									
<i>Secondary school</i>	1,415 (60%)	212 (58%)	906 (57 %)		—	—		—	—		—	—	
<i>Below secondary school</i>	931 (40%)	151 (42%)	673 (43 %)		—	—		—	—		—	—	
Professional activity				<0.001									
<i>Yes</i>	1,344 (60%)	171 (49%)	784 (52 %)		—	—		—	—		—	—	
<i>No</i>	898 (40%)	176 (51%)	730 (48 %)		1.39	1.22, 1.59	<0.001	1.54	1.23, 1.93	<0.001	1.11	0.88, 1.40	0.4
Current MDE duration	8.0 (20.2)	7.3 (8.6)	7.8 (12.1)	0.7	—	—		—	—		—	—	

Variables				Global <i>p</i> -value	Without SI vs Concordant SI			Without SI vs SI clinician- rated			Concordant SI vs SI clinician-rated		
	Without SI, 2,368 ^a	SI clinician- rated, 365 ^a	Concordant SI 1,595 ^a		OR ^b	95% CI ^b	<i>p</i> -value	OR ^b	95% CI ^b	<i>p</i> -value	OR ^b	95% CI ^b	<i>p</i> -value
Number of MDE	1.35 (6.11)	1.64 (4.99)	2.26 (8.81)	<0.001	1.02	1.01, 1.03	<0.001	1.01	0.99, 1.02	0.4	0.99	0.96, 1.00	0.2
Age at first MDE	36 (13)	34 (12)	33 (12)	<0.001	0.99	0.98, 0.99	<0.001	0.99	0.97, 1.00	0.031	1	0.99, 1.01	0.9
Alcohol abuse				0.005									
<i>No</i>	2,243 (95%)	332 (91%)	1,481 (93 %)		—	—		—	—		—	—	
<i>Yes</i>	116 (4.9%)	31 (8.5%)	108 (6.8 %)		1.41	1.08, 1.85	0.013	1.81	1.18, 2.69	0.005	1.28	0.83, 1.92	0.2
Lifetime SA				<0.001									
<i>No</i>	2,161 (91%)	268 (74%)	1,067 (67 %)		—	—		—	—		—	—	
<i>Yes</i>	203 (8.6%)	96 (26%)	522 (33 %)		5.21	4.37, 6.23	<0.001	3.81	2.89, 5.00	<0.001	0.73	0.56, 0.94	0.017
HADS-Anxiety	13.4 (3.3)	14.4 (3.4)	15.6 (3.3)	<0.001	1.22	1.19, 1.24	<0.001	1.09	1.05, 1.12	<0.001	0.9	0.87, 0.93	<0.001
HADS-Agitation	7.19 (1.34)	7.05 (1.34)	6.93 (1.35)	<0.001	0.93	0.88, 0.97	0.002	0.86	0.79, 0.94	<0.001	0.93	0.86, 1.02	0.11
HADS-Psychic anxiety	8.70 (1.60)	8.05 (1.43)	8.33 (1.58)	<0.001	0.75	0.72, 0.79	<0.001	0.86	0.80, 0.92	<0.001	1.13	1.05, 1.22	<0.001
HADS-Depression	13.9 (3.6)	14.5 (3.6)	16.9 (3.2)	<0.001	1.29	1.27, 1.32	<0.001	1.05	1.02, 1.09	0.001	0.82	0.79, 0.85	<0.001
HADS Total score	27 (6)	29 (6)	32 (5)	<0.001	1.18	1.17, 1.20	<0.001	1.05	1.03, 1.07	<0.001	0.89	0.87, 0.91	<0.001
Hopelessness	14.9 (4.1)	15.3 (3.8)	17.4 (2.7)	<0.001	1.26	1.23, 1.29	<0.001	1.03	1.00, 1.06	0.082	0.82	0.79, 0.85	<0.001
Associated treatment				<0.001									
<i>No</i>	2,108 (90%)	276 (77%)	1,172 (76 %)		—	—		—	—		—	—	
<i>Yes</i>	247 (10%)	82 (23%)	376 (24 %)		2.74	2.30, 3.27	<0.001	2.54	1.91, 3.34	<0.001	0.93	0.70, 1.21	0.6
Treatment instauration/Change				<0.001									
<i>Instauration</i>	1959 (85%)	256 (73%)	1114 (72%)										
<i>Change</i>	350 (15%)	93 (27%)	431 (28%)		2.17	1.85, 2.54	<0.001	.03	1.56, 2.64	<0.001	0.94	0.72, 1.22	0.6

^an (% %); Mean (SD)

^bOR = Odds Ratio, CI = Confidence Interval

MDE: Major depressive episode; SA: Suicide attempt; HADS: Hospital Anxiety and Depression Scale; MADRS: Montgomery-Åsberg Depression Rating Scale

Suppl Mat Table 8A: Sociodemographic and clinical characteristics of patients without SI (self- and clinician-rated) vs patients with concordant SI vs patients with only clinician-rated SI in the GENESE cohort (multivariate analysis)

Variables	<i>Global p-value</i>	<i>Without SI vs Concordant SI</i>			<i>Without SI vs SI clinician-rated</i>			<i>Concordant SI vs SI clinician-rated</i>		
		OR ^a	95% CI ^a	<i>p-value</i>	OR ^a	95% CI ^a	<i>p-value</i>	OR ^a	95% CI ^a	<i>p-value</i>
Professional activity	0.2									
Yes										
No										
First MDE	0.029									
No		—	—		—	—		—	—	
Yes		0.75	0.60, 0.93	0.008	0.92	0.58, 1.46	0.7	1.22	0.76, 1.96	0.4
Lifetime SA	<0.001									
No		—	—		—	—		—	—	
Yes		4.19	3.07, 5.76	<0.001	3.39	1.84, 6.04	<0.001	0.80	0.44, 1.43	0.5
MADRS- Sleep (clinician-rated)	<0.001									
<3		—	—		—	—		—	—	
≥3		2.28	1.71, 3.08	<0.001	2.85	1.55, 5.77	0.002	1.21	0.62, 2.56	0.6
HADS-Anxiety	<0.001	1.08	1.05, 1.12	<0.001	0.99	0.92, 1.06	0.7	0.92	0.85, 0.98	0.015
HADS-Depression	<0.001	1.16	1.12, 1.20	<0.001	0.99	0.93, 1.06	0.8	0.88	0.83, 0.94	<0.001

Variables	Global <i>p-value</i>	<i>Without SI vs Concordant SI</i>			<i>Without SI vs SI clinician-rated</i>			<i>Concordant SI vs SI clinician-rated</i>		
		OR ^a	95% CI ^a	<i>p-value</i>	OR ^a	95% CI ^a	<i>p-value</i>	OR ^a	95% CI ^a	<i>p-value</i>
Impulsivity	0.034	1.02	1.00, 1.04	0.016	1.03	0.99, 1.07	0.13	1.00	0.96, 1.04	>0.9
Associated treatment	0.008									
No		—	—		—	—		—	—	
Yes		1.35	1.09, 1.66	0.005	1.50	0.97, 2.35	0.069	1.12	0.70, 1.81	0.6

^a OR = Odds Ratio, CI = Confidence Interval

MDE: Major depressive episode; SA: Suicide attempt; HADS: Hospital Anxiety and Depression Scale; MADRS: Montgomery-Åsberg Depression Rating Scale

Suppl Mat Table 8B: Sociodemographic and clinical characteristics of patients without SI (self- and clinician-rated) vs patients with concordant SI vs patients with only clinician-rated SI in the LUEUR cohort (multivariate analysis)

Variables	Global <i>p-value</i>	<i>Without SI vs Concordant SI</i>			<i>Without SI vs SI clinician-rated</i>			<i>Concordant SI vs SI clinician-rated</i>		
		OR ^a	95% CI ^a	<i>p-value</i>	OR ^a	95% CI ^a	<i>p-value</i>	OR ^a	95% CI ^a	<i>p-value</i>
Living alone	<0.001									
No		—	—		—	—		—	—	
Yes		1.23	1.04, 1.45	0.017	1.60	1.24, 2.06	<0.001	1.24	0.95, 1.61	0.12
Professional activity	0.022									
Yes		—	—		—	—		—	—	
No		1.05	0.89, 1.23	0.6	1.45	1.13, 1.86	0.004	1.29	0.99, 1.69	0.057
Alcohol abuse	0.2									
No										
Yes										
Lifetime SA	<0.001									
No		—	—		—	—		—	—	
Yes		3.70	2.99, 4.60	<0.001	2.92	2.13, 3.98	<0.001	0.85	0.63, 1.15	0.3
HADS-Anxiety	<0.001	1.10	1.07, 1.13	<0.001	1.07	1.03, 1.12	<0.001	0.98	0.94, 1.02	0.3
HADS-Depression	<0.001	1.17	1.14, 1.21	<0.001	1.03	0.98, 1.07	0.2	0.88	0.84, 0.92	<0.001
Hopelessness	<0.001	1.13	1.10, 1.16	<0.001	0.99	0.96, 1.03	0.6	0.88	0.84, 0.92	<0.001

Variables	Global <i>p-value</i>	<i>Without SI vs Concordant SI</i>			<i>Without SI vs SI clinician-rated</i>			<i>Concordant SI vs SI clinician-rated</i>		
		OR ^a	95% CI ^a	<i>p-value</i>	OR ^a	95% CI ^a	<i>p-value</i>	OR ^a	95% CI ^a	<i>p-value</i>
Associated treatment	<0.001									
No		—	—		—	—		—	—	
Yes		1.93	1.54, 2.40	<0.001	2.02	1.46, 2.77	<0.001	0.91	0.66, 1.25	0.6

^a OR = Odds Ratio, CI = Confidence Interval

MDE: Major depressive episode; SA: Suicide attempt; HADS: Hospital Anxiety and Depression Scale; MADRS: Montgomery-Åsberg Depression Rating Scale

Suppl Mat Table 9A: Remission of depression at week 6 in patients without SI (self- and clinician-rated) vs patients with concordant SI vs patients with only clinician-rated SI in the GENESE cohort

Variables	Remission of depression		Model 0			Model 1		
	No	Yes	OR ^a	95% CI ^a	<i>p-value</i>	OR ^a	95% CI ^a	<i>p-value</i>
Suicidal ideation								
No SI	738 (46.5%)	850 (53.5%)	—	—		—	—	
Concordant SI	390 (54.9%)	320 (45.1%)	1.40	1.18, 1.68	<0.001	1.17	0.95, 1.44	0.13
Clinician-rated SI	59 (59%)	41 (41%)	1.66	1.10, 2.51	0.016	1.62	1.04, 2.55	0.036

^aOR = Odds Ratio, CI = Confidence Interval

Model 0: Crude association

Model 1: Adjusted for age, sex, first MDE, Lifetime SA, MADRS-Sleep (clinician-rated), HADS-Anxiety, HADS-Depression, Plutchik Impulsivity, and Associated treatment

Suppl Mat Table 9B: Remission of depression at week 6 in patients without SI (self- and clinician-rated) vs patients with concordant SI vs patients with only clinician-rated SI in the LUEUR cohort

Variables	Model 0				Model 1			
	Remission of depression		OR ^a	95% CI ^a	p-value	OR ^a	95% CI ^a	p-value
	No	Yes						
Suicidal ideation								
No SI	977 (46.7%)	1117 (53.3%)				—	—	
Concordant SI	845 (57.4%)	628 (42.6%)	1.54	1.35, 1.76	<0.001	1.28	1.09, 1.51	0.003
Clinician-rated SI	168 (51.1%)	161 (48.9%)	1.19	0.95, 1.51	0.14	1.08	0.84, 1.38	0.6

^aOR = Odds Ratio, CI = Confidence Interval

Model 0: Crude association

Model 1: Adjusted for age, sex, number of lifetime MDE, Lifetime SA, Hopelessness, HADS-Anxiety, HADS-Depression, and Associated treatment

Suppl Mat Table 10: Risk of suicide attempt at week 6 in patients without SI (self- and clinician-rated) vs patients with concordant SI vs patients with only clinician-rated SI in the LUEUR cohort

Variables	Model 0					Model 1		
	SA during the follow-up		OR ^a	95% CI ^a	p-value	OR ^a	95% CI ^a	p-value
	No	Yes						
Suicidal ideation								
No SI	2115 (99.4%)	12 (0.6%)				—	—	
Concordant SI	1427 (96.4%)	53 (3.6%)	6.55	3.61, 12.9	<0.001	3.90	1.91, 8.55	<0.001
Clinician-rated SI	325 (98.2%)	6 (1.8%)	3.25	1.13, 8.44	0.019	2.05	0.63, 5.82	0.2

^aOR = Odds Ratio, CI = Confidence Interval

Model 0: Crude association

Model 1: Adjusted for age, sex, alcohol abuse, number of lifetime MDE, Lifetime SA, Hopelessness, HADS-Anxiety, HADS-Depression, and Associated treatment

SI at week 6 (GENESE):

		<i>SI at week 6</i>					
		Only self-rated SI	Only clinician-rated SI	Concordant SI	No SI	Missing	Total
<i>SI at inclusion</i>	Only self-rated SI	78 (41.3%)	2 (6.7%)	21 (23.1%)	486 (18.0%)	50 (16.6%)	637 (19.23%)
	Only clinician-rated SI	6 (3.2%)	5 (16.7%)	3 (3.3%)	88 (3.3%)	15 (5.0%)	117 (3.53%)
	Concordant SI	76 (40.2%)	13 (43.3%)	56 (61.5%)	549 (20.3%)	80 (26.5%)	774 (23.36%)
	No SI	29 (15.3%)	10 (33.3%)	11 (12.1%)	1578 (58.4%)	157 (52.0%)	1785 (53.88%)
	Total	189	30	91	2701	302	3313

SI at week 6 (LUEUR):

		<i>SI at week 6</i>					
		Only self-rated SI	Only clinician-rated SI	Concordant SI	No SI	Missing	Total
<i>SI at inclusion</i>	Only self-rated SI	15 (28.3%)	17 (12.1%)	10 (6.1%)	360 (9.6%)	55 (7.9%)	457 (9.55%)
	Only clinician-rated SI	5 (9.4%)	14 (9.9%)	4 (2.5%)	289 (7.7%)	53 (7.6%)	365 (7.63%)
	Concordant SI	25 (47.2%)	98 (69.5%)	142 (87.1%)	1140 (30.5%)	190 (27.4%)	1595 (33.33%)
	No SI	8 (15.1%)	12 (8.5%)	7 (4.3%)	1945 (52.1%)	396 (57.1%)	2368 (49.49%)
	Total	53	141	163	3734	694	4785