



**HAL**  
open science

## Diaphragm thickness modifications and associated factors during VA-ECMO for a cardiogenic shock: a cohort study

Pierre-Henri Moury, Alexandre Béhouche, Sébastien Bailly, Zoé Durand, Géraldine Dessertaine, Angelina Pollet, Samir Jaber, Samuel Verges, Pierre Albaladejo

### ► To cite this version:

Pierre-Henri Moury, Alexandre Béhouche, Sébastien Bailly, Zoé Durand, Géraldine Dessertaine, et al.. Diaphragm thickness modifications and associated factors during VA-ECMO for a cardiogenic shock: a cohort study. *Annals of Intensive Care*, 2024, 14 (1), pp.38. 10.1186/s13613-024-01264-8 . hal-04500490

**HAL Id: hal-04500490**

**<https://hal.science/hal-04500490>**

Submitted on 12 Mar 2024

**HAL** is a multi-disciplinary open access archive for the deposit and dissemination of scientific research documents, whether they are published or not. The documents may come from teaching and research institutions in France or abroad, or from public or private research centers.

L'archive ouverte pluridisciplinaire **HAL**, est destinée au dépôt et à la diffusion de documents scientifiques de niveau recherche, publiés ou non, émanant des établissements d'enseignement et de recherche français ou étrangers, des laboratoires publics ou privés.

# Diaphragm thickness modifications and associated factors during VA-ECMO for a cardiogenic shock: a cohort study

Pierre-Henri Moury <sup>1 2</sup>, Alexandre Béhouche <sup>3</sup>, Sébastien Bailly <sup>4</sup>, Zoé Durand <sup>3</sup>, Géraldine Dessertaine <sup>3</sup>, Angelina Pollet <sup>3</sup>, Samir Jaber <sup>5</sup>, Samuel Verges <sup>4</sup>, Pierre Albaladejo <sup>3</sup>

<sup>1</sup> Pôle Anesthésie-Réanimation, Grenoble Alpes University, Grenoble, France. PHMoury@chu-grenoble.fr.

<sup>2</sup> Univ. Grenoble Alpes, Inserm, Grenoble Alpes University Hospital, HP2 Laboratory, Grenoble, France. PHMoury@chu-grenoble.fr.

<sup>3</sup> Pôle Anesthésie-Réanimation, Grenoble Alpes University, Grenoble, France.

<sup>4</sup> Univ. Grenoble Alpes, Inserm, Grenoble Alpes University Hospital, HP2 Laboratory, Grenoble, France.

<sup>5</sup> Intensive Care Unit, Anaesthesiology and Critical Care Department B, Saint Eloi Teaching Hospital, Université Montpellier 1, Centre Hospitalier Universitaire Montpellier, Montpellier, France.

## Keywords:

Cardiogenic shock; Diaphragm; ECMO; Muscle; Weaning.

## Abbreviations

95% CI 95% Confidence Interval; dTF Diaphragm thickening fraction; 95% CI 95% Confidence Interval; FiO<sub>2</sub> Oxygen inspired fraction; ICU Intensive care unit; KDIGO Kidney Disease Improving Global Outcomes; MLM Mixed-effect linear model; LVEF Left ventricle ejection fraction; NIV Non-invasive ventilation; OR Odds ratio; PEEP Positive end expiratory pressure; RASS Richmond agitation sedation scale; RMCr Repeated measure correlation; RMCr Repeated measure correlation; SAPS II Severe acute physiology score II; SOFA Severity of organ failure assessment; TEE Diaphragm thickness at end expiration; TEi Diaphragm thickness at end inspiration; VA-ECMO Veno-arterial extracorporeal membrane oxygenation; VV-ECMO Veno-Venous extracorporeal membrane oxygenation

# Introduction

Cardiogenic shock often necessitates mechanical ventilation due to accompanying acute respiratory failure [1, 2]. Heart failure has been demonstrated to be linked to diaphragm weakness in non-critically ill patients [3–7]. The diaphragm, as the primary respiratory muscle, plays a vital role in facilitating liberation from mechanical ventilation [8, 9]. Diaphragm weakness acquired during the intensive care unit (ICU) stay have been reported in the literature [10, 11]. The prevalence of diaphragm weakness can vary from 64% of the patient after 24 h of intubation to 80% at the time of weaning [8, 12]. Various factors have been identified as potential causes, including sepsis, mechanical ventilation, cardiac surgery, and shock [13, 14]. Furthermore, acquired diaphragm weakness may be associated with mortality and difficult weaning from mechanical ventilation [13, 15, 16].

In the ICU, circulatory failures often lead to veno-arterial extracorporeal membrane oxygenation (VA-ECMO). Therefore, several factors introduce uncertainties in the relationship between cardiogenic shock and acquired diaphragm dysfunction. While animal studies have reported diaphragm weakness in experimental cardiogenic shock, limited documentation exists in humans [17, 18]. Our recent findings indicated that changes in VA-ECMO sweep gas flow significantly influenced diaphragm thickening fraction (dTF), serving as a surrogate for diaphragm effort measurement [18]. Other studies have shown that veno-venous extracorporeal membrane oxygenation (VV-ECMO) greatly facilitate in achieving lung and diaphragm protective ventilation targets [18, 19]. Recent findings have also established a relationship between diaphragm thickness evolution in mechanically ventilated patients and diaphragm contractile activity [20]. Consequently, it has been hypothesized that carefully titrating respiratory support could prevent structural impairments of the diaphragm.

Therefore, our primary objective was to investigate changes in diaphragm thickness during the first week of VA-ECMO treatment for cardiogenic shock. Secondary goals included exploring associated factors such as VA-ECMO settings, early extubation, organ failure, pharmacological drug use, sepsis, and a history of cardiac surgery. Finally, given the rate of exposition to mechanical ventilation, and the role of sweep gas flow on diaphragm contractility in our previous study [18], we hypothesized that distinct diaphragm thickness evolution patterns can be delineated and potentially linked to sweep gas flow settings during VA-ECMO treatment.

## Methods

### Design

This physiological prospective observational study, approved on 16th of July 2019, by the Comité de Protection des Personnes Ile de France V (“AtrophyECMO”: IRB number 2019-A01273-54), was registered at ClinicalTrial.gov (NCT04052230). Conducted from October 2019 to February 2022, it adhered to the Helsinki Declaration of 1975. The need for written consent was waived according to French Law. Oral consent was obtained from each patient or from a close relative.

## Patients

Patients were consecutively enrolled in the study if they were treated with a peripheral VA-ECMO for cardiogenic shock. Exclusion criteria were VV-ECMO and the inability to perform diaphragm ultrasound, including patients in moribund state.

Demographic data, severity scores, comorbidities, reasons for admission to the ICU and for initiating VAECMO were collected. The mechanical ventilation duration, duration of VA-ECMO, the bridge to a left ventricle assistance device or a heart transplantation, duration of ICU stay and ICU mortality were also collected. Arterial blood gases were drawn from the right upper extremity.

Mechanical ventilation, sedation, ECMO care, and patient outcome are described in the Additional file 1 data materials. Briefly, Mechanical ventilation was initially set to control modes before pressure support ventilation to insure a tidal volume below the target of 6 ml/kg of predicted ideal body weight and < 14 cmH<sub>2</sub>O driving pressure threshold. A VA-ECMO blender was systematically used to set the sweep gas flow and VAECMO membrane Oxygen fraction in intubated and extubated patient. A lower sweep gas flow threshold of 1.5 L/min was respected to avoid hypoxemia due to the veno-arterial shunt. The VA-ECMO sweep gas flow was set to provide an appropriate pH and PaCO<sub>2</sub> balance according to the tidal volume target and the driving pressure target.

We assessed the Richmond Agitation Sedation Scale (RASS). Sedation, vasoactive agents, and corticoids and neuromuscular blocking agent used were collected daily.

### Diaphragm assessment and study procedure

On the first day of VA-ECMO assistance, measurements of the thickness of the right hemidiaphragm were done at the end of inspiration (TEI, mm) and expiration (TEE, mm) [21]. Ultrasound measurements were conducted independently through a computer-driven software on images extracted from the data base (DICOM viewer 3.0, Philips, Netherlands). Ultrasounds measurement of the diaphragm thickness, thresholds of thickness evolution and thickening have been extensively reported and described in previous studies [8, 14, 18, 22]. The diaphragm thickening fraction (dTF) was calculated as  $(TEI-TEE)/TEE$  and expressed as percentage. Ultrasound measurements were recorded daily, measured and averaged over at least 3 respiratory cycles. Ultrasound measurements were conducted by three intensivists (AB, ZD, PHM) trained in diaphragm imaging [8, 14, 18]. Diaphragm thickness was measured systematically in a 20–30° upright position in the zone of apposition of the diaphragm with the liver between the 8th–10th intercostal spaces using a 7.5–12 MHz probe [23, 24]. The reproducibility was reported in previous study from the team and was not investigated in the presented study [8, 14, 18]. The place of the probe was systematically marked. Ideally, the ultrasound measurements were undertaken daily whether the patient were intubated and ventilated in control modes or spontaneously breathing. Ideally, we standardized the daily spontaneous breathing trial which was set to 0 cmH<sub>2</sub>O of PEEP level and 7 cmH<sub>2</sub>O of pressure support ventilation if considered as possible. The ventilator settings and the use of sedatives or neuromuscular blocking agents within the last 24 h were noted during the assessment. Physiological variables, blood gas, and an ultrasound measurement of the left ventricle ejection fraction (LVEF) were collected at the same time [25, 26]. The TEE evolution was categorized in three groups from the baseline to the last ultrasound assessment obtained during the first week: decreased by 10%, increased by 10%, or stability [20]. In

unplanned analysis, TEE evolution was also categorized in two groups atrophy and non-atrophy (according to the presence or absence of a 10% decrease in thickness). During the same ultrasound assessment, we used the 20% dTF threshold to define a low diaphragm contractile activity [8, 14].

## **Endpoints**

The primary endpoint was to assess the TEE evolution during the first week of VA-ECMO. The secondary endpoints were the assessment of predefined influential factors on TEE evolution during the first week, and dTF evolution.

These parameters were: low diaphragm contractility, SOFA score, SAPS2 score, settings of mechanical ventilation and VA-ECMO, sedation, pharmacological drugs use, kidney function and the association with the LVEF.

Lastly, the patient outcome were analysed, including: early weaning from mechanical ventilation impact (before day 4), mechanical ventilation duration, and mortality at 60 days.

## **Statistical analyses**

Statistical analyses were performed using R software. Categorical variables were expressed as numbers (percentages) and if the assumptions for the Chi-squared test were not fulfilled, the Fisher exact test was applied. Continuous variables were expressed as median (interquartile range [25, 75%]) and the Shapiro test was used to test normality. Comparisons were made between patients who presented diaphragm atrophy or not using Student's t-test or Mann-Whitney test for parametric and nonparametric variables, respectively.

In descriptive analysis, given the longitudinal follow-up design, we used two strategies to characterise the variable before conducting an analytic model construction: definition of categories of diaphragm evolution and repeated measures analysis [20]. We reported the average values of the first three days of the potential risk factors among predefined categories. We used repeated measure correlation (RMCr, 95% confidence intervals or CI) to evaluate correlations [27]. Then, the primary analysis was the calculation of a mixed-effect linear model (MLM) of diaphragm thickness over time, with subjects treated as random effects [28].

Three categories were defined whether the TEE had decreased by 10%, increased by 10%, or remained stable [20]. Using the Bonferroni correction and Dunn's test, we divided the population into two subgroups based on whether the diaphragm thickness had decreased by 10% or not, creating an atrophy group and a no-atrophy group.

The MLM was chosen for primary analysis because of its efficiency to incorporate repeated measures and to handle missing values [28]. Logit transformations were used to normalize values included in the MLM to improve the stability of the model [28]. Then, sensitivity analysis were performed to corroborate our model (see Additional file 1). In secondary analysis, we also used a MLM to characterize influential factors of dTF.

Patients' outcomes at 60 days was studied by a univariable analysis in case of atrophy or not. Secondly, we conducted a logistic regression to calculate the odds ratio (OR) of death at 60 days.

A *p*-value of less than 0.05 was considered statistically significant.

Sample size calculation was performed based on preliminary clinical results and described in the Additional file 1 data materials.

## Results

### Patient characteristics

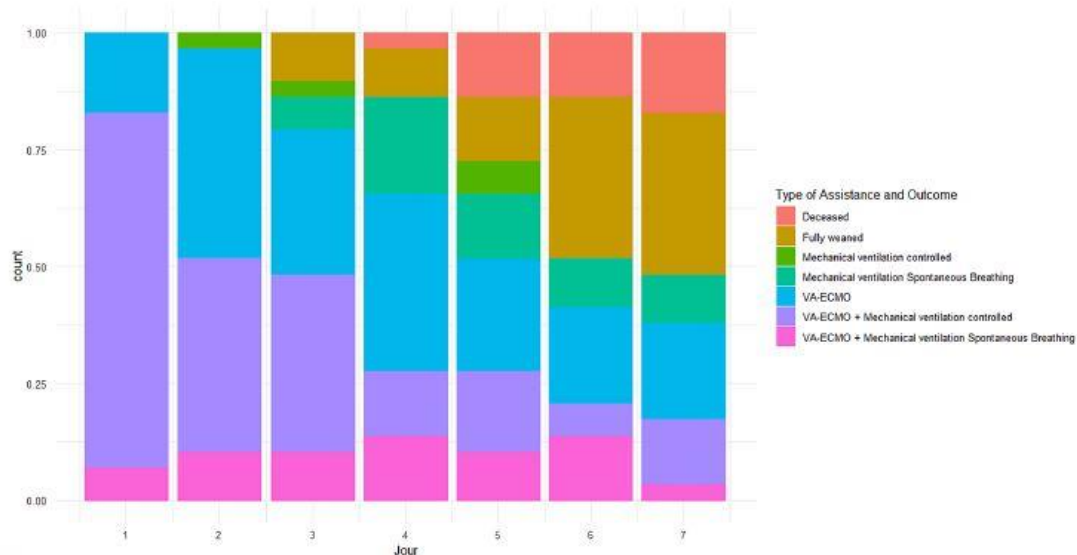
During the study period, spanning 18 months due to service reorganization amid the COVID-19 pandemic, a trained ultrasound operator was intermittently present for ten, three, and five months, respectively. Among the 61 patients implanted with an ECMO during this period, 10 were moribund at admission, 5 had a VV-ECMO and six were admitted during the absence of the trained operator (see Additional file 1: Figure S1). A total of thirty patients were initially considered, but one significant outlier was excluded due to poor image quality, resulting in 29 patients for analysis with a total of 135 TEE assessments. Five patients (17%) died before day seven, and ten (34%) died before day sixty. Two patients underwent heart transplantation, and one had a left ventricle assistance device procedure (Additional file 1: Table S1). None of the patients had a combined assistance by Impella® or Intra-aortic balloon pump during VA-ECMO. Ventilation was initially provided in control modes, transitioning to spontaneous breathing before potential extubation, irrespective continued of VA-ECMO (Fig. 1). At the end of the first inclusion day, two patients were never intubated, and four were extubated, precluding diaphragm thickness measurement while intubated during their study period. Thirteen patients (45%) remained intubated on day 3 (see Additional file 1: Table S2). Patients were ventilated for six days [1, 11], and VA-ECMO assistance lasted six days [3, 9]. Dialysis requirement and acute kidney injury according to the KDIGO classification (Kidney Disease Improving Global Outcomes) at the end of the first week were not different according the TEE classification groups (Table 1).

### Diaphragm thickness

Individual values of TEE from baseline are displayed in Additional file 1: Figure S2. The TEE decrease was observed in 7 (23%) patients, remained stable in 18 patients (60%) and increased in 4 (17%) (Fig. 2). Among studied variables, sweep gas flow (Fig. 3), norepinephrine, neuromuscular blocking agent, and duration of mechanical ventilation differed among TEE groups (Additional file 1: Table S3). Levosimendan was not administered to any patient before day 7.

On day 2, sweep gas flow was significantly different between groups (Kruskal–Wallis test, *p*-value = 0.01464, Fig. 3) and remained significant when comparing the atrophy group to the stable group using Dunn test and Bonferroni correction (5 l/min [4, 5] to 3 l/min [2,4], *p*-value = 0.0066).

Using repeated measures correlation (RMCr) to assess the relationship between daily variable changes and TEE evolution, three parameters were significantly correlated: sweep gas flow (RMCr = 0.23, 95% CI: [0.01; 0.43], *p*-value = 0.039), daily insulin dose (RMCr = 0.32, 95% CI: [0.14; 0.49], *p*-value = 0.001), and pH (RMCr = -0.2, 95% CI: [-0.38; -0.01], *p*-value = 0.038; Additional file 1: Figure S3). Subsequently, based on parsimony principles, a MLM was constructed, wherein the prominent factors were pH (Beta = -2; 95% CI [-2.9, -1.1]).



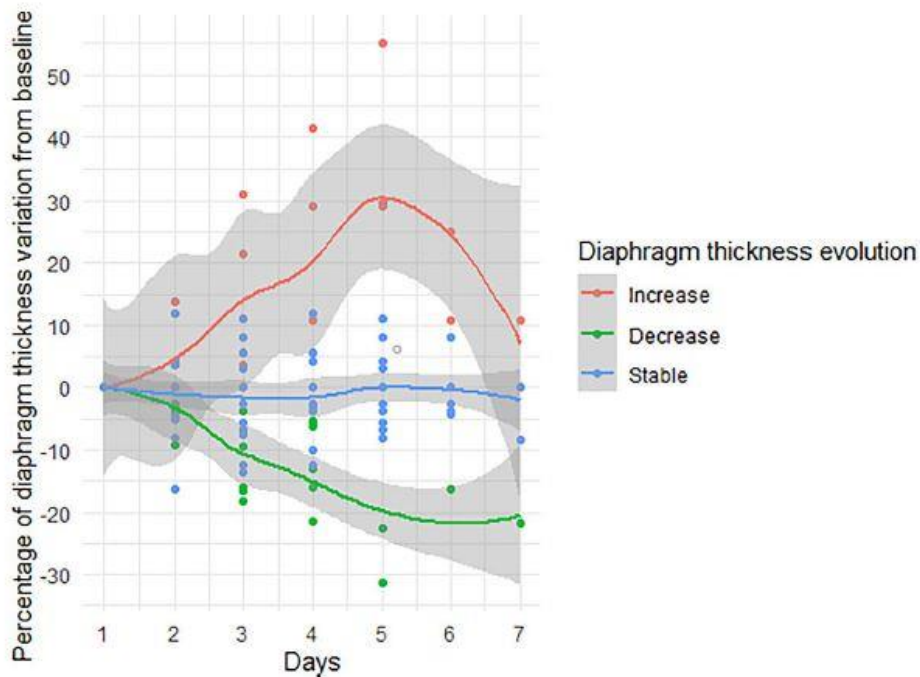
**Fig. 1** Patients requiring assistances. The histogram illustrates the cumulative rate of patients' specific assistances or death over the study period in days. Patients were categorized based on the level of assistance, including full assistance with both VA-ECMO and mechanical ventilation in either control or spontaneous breathing modes. Additionally, patients assisted with VA-ECMO alone were included, and those followed after removal from assistance. Patients were also classified based on their respiratory status, which included being assisted by mechanical ventilation (either in control or spontaneous breathing modes) or being fully weaned from the need for intubation and VA-ECMO.

**Table 1** Patients' characteristics

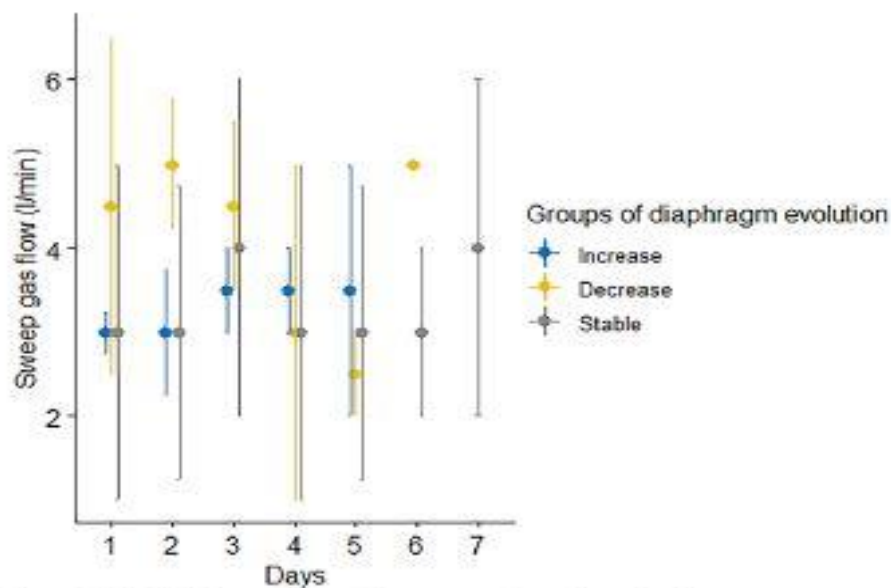
Variable	Patient characteristics according to three groups of diaphragm thickness evolution (: stable, atrophy, increase) using a ultrasound method				Patient characteristics according to the absence or the presence of diaphragm atrophy using a ultrasound method		
	Increase, N = 4 <sup>1</sup>	Stable, N = 18 <sup>1</sup>	Atrophy, N = 7 <sup>1</sup>	p-value <sup>2</sup>	Non-atrophy, N = 22 <sup>1</sup>	Atrophy, N = 7 <sup>1</sup>	p-value <sup>2</sup>
Age (years)	67 [66, 68]	52 [48, 65]	55 [47, 66]	0.2	62 [48, 67]	55 [47, 66]	0.8
Sex (male)	4 [100%]	15 [83%]	6 [86%]	>0.9	19 [86%]	6 [86%]	>0.9
Weight (kg)	90 [83, 93]	80 [64, 98]	85 [73, 86]	0.7	81 [66, 96]	85 [73, 86]	>0.9
Height (m)	1.79 [1.73, 1.84]	1.75 [1.7, 1.8]	1.7 [1.7, 1.75]	0.5	1.75 [1.7, 1.8]	1.7 [1.7, 1.75]	0.4
Body Mass Index	28 [25, 29]	26 [23, 30]	26 [25, 28]	0.9	26 [23, 29]	26 [25, 28]	0.8
SOFA	9 [7, 11]	9 [6, 10]	9 [8, 16]	0.5	9 [6, 10]	9 [8, 16]	0.3
Severe Acute Physiology Score II	47 [45, 49]	43 [36, 51]	47 [40, 62]	0.6	44 [41, 51]	47 [40, 62]	0.6
Cardiac arrest	0 (0%)	9 (50%)	3 (43%)	0.3	9 (41%)	3 (43%)	>0.9
Cardiac surgery	2 (50%)	6 (33%)	4 (57%)	0.5	8 (36%)	4 (57%)	0.4
COPD	1 (25%)	1 (5.6%)	0 (0%)	0.3	2 (9.1%)	0 (0%)	>0.9
Cancer	1 (25%)	1 (5.6%)	0 (0%)	0.3	2 (9.1%)	0 (0%)	>0.9
Chronic kidney insufficiency	1 (25%)	0 (0%)	0 (0%)	0.14	1 (4.5%)	0 (0%)	>0.9
Dialysis	1 (25%)	2 (11%)	2 (29%)	0.5	3 (14%)	2 (29%)	0.6
Fluid balance at inclusion (ml)	-346 [-718, 178]	-273 [-900, 486]	304 [-936, 1,227]	0.9	-273 [-900, 486]	304 [-936, 1,227]	0.7
Weight balance J0 to last assessment (kg)	4 [2, 4]	0 [-4, 2]	-1 [-7, 3]	0.4	1 [-3, 4]	-1 [-7, 3]	0.6
KDIGO							
I	2 (50%)	13 (72%)	3 (43%)	0.4	15 (68%)	3 (43%)	0.4
II	0 (0%)	1 (5.6%)	0 (0%)		1 (4.5%)	0 (0%)	
III	2 (50%)	4 (22%)	4 (57%)		6 (27%)	4 (57%)	
Sepsis	0 (0%)	1 (5.6%)	1 (14%)	0.6	1 (4.5%)	1 (14%)	0.4
Number of MV days at day 7	2 [1, 4]	2 [1, 5]	6 [5, 7]	0.034	2 [1, 5]	6 [5, 7]	0.011
VA-ECMO parameters (All following parameters were averaged over the three first days)							
VA-ECMO Flow (l/min)	2.9 [2.9, 3]	3.5 [2, 4]	4.5 [3, 5]	0.3	3.2 [2.5, 3.9]	4.5 [3, 5.3]	0.2
Sweep gas flow (l/min)	3 [2.7, 3.2]	3.1 [2.6, 4]	4.8 [3, 5]	0.12	3 [2.7, 4]	4.8 [3.3, 5]	0.045

Results are reported for patients according to their diaphragm evolution status at the end of patient follow-up. We divided the study population in three categories whether the diaphragm thickness presented a  $\geq 10\%$  decrease, increase or a stability from baseline to the last assessment

<sup>1</sup> Median [interquartile range]; n (%); <sup>2</sup>Kruskal-Wallis rank sum test; Fisher's exact test; <sup>3</sup>Wilcoxon rank sum test; Fisher's exact test; Wilcoxon rank sum exact test; BMI: Body mass index; COPD: Chronic Obstructive Pulmonary Disease; SAPS2: Simplified Acute Physiology Score 2; MV: Mechanical Ventilation; VA-ECMO: Veno-arterial extracorporeal membrane oxygenation; KDIGO: Kidney Disease Improving Global



**Fig. 2** Evolution of diaphragm thickness from baseline until day 7. The panel shows the daily diaphragm thickness evolution from baseline in patients with diaphragm atrophy (green: decrease of 10% from baseline), increase (red: increase of 10% from baseline) and stability (blue) at the end of follow-up and expressed by percentage from baseline



**Fig. 3** VA-ECMO sweep gas flow according the diaphragm thickness evolution at the end of follow-up. See Day 2 sweep gas flow was significantly different between groups (Kruskal–Wallis test;  $p$ -value=0.01464, Fig. 3) and also when comparing the atrophy group to the stable group using Dunn's test and Bonferroni correction (5 l/min [4, 5] to 3 l/min [2,4],  $p$ -value=0.0066)

$p$ -value < 0.001), sweep gas flow (Beta = - 3; 95% CI [- 4.8, - 1.2].  $p$ -value = 0.001), and the interaction between pH and sweep gas flow (Beta = 0.41; 95% CI [0.17; 0.65].  $p$ -value < 0.001), with no significant association between dTF and TEE evolution (Additional file 1:



Table S4). The TEE evolution was not correlated with the dTF (RMCr = 0.25, 95% CI: [-0.1; 0.54], p-value = 0.13), even after adjusting for confounding factors in a MLM. Daily fluid balance was not associated with TEE evolution using repeated measure correlation and the MLM (RMCr = 0.03, 95% CI: [-0.2; 0.2], p-value = 0.8). These results were confirmed in sensitivity analysis (see Additional file 1: Table S4).

### **Diaphragm contractile activity**

The diaphragm contractility, assessed by the dTF, increased throughout the study period from 5% [0, 13] on day one to 21% [17, 24] in six patients by day seven (Fig. 4). Although extubated patients had a higher dTF than intubated patients, it consistently remained below 20% until day 7 (see Additional file 1: Table S5). Twenty patients (69%) presented a dTF < 20% as surrogate for low diaphragm contractility at the end of the study period. The characteristics of the patients according to a 20% dTF threshold are described in the Additional file 1: Table S6. No correlation was found when comparing the sweep gas flow to the dTF using repeated measure correlation (RMCr = -0.07, 95% CI: [-0.29; 0.15], p-value = 0.54). However, analysis through MLM revealed an association between dTF and sweep gas flow (Beta = -2.8; 95% CI [-5.2; -0.5], p-value = 0.017), as detailed in Additional file 1: Table S7.

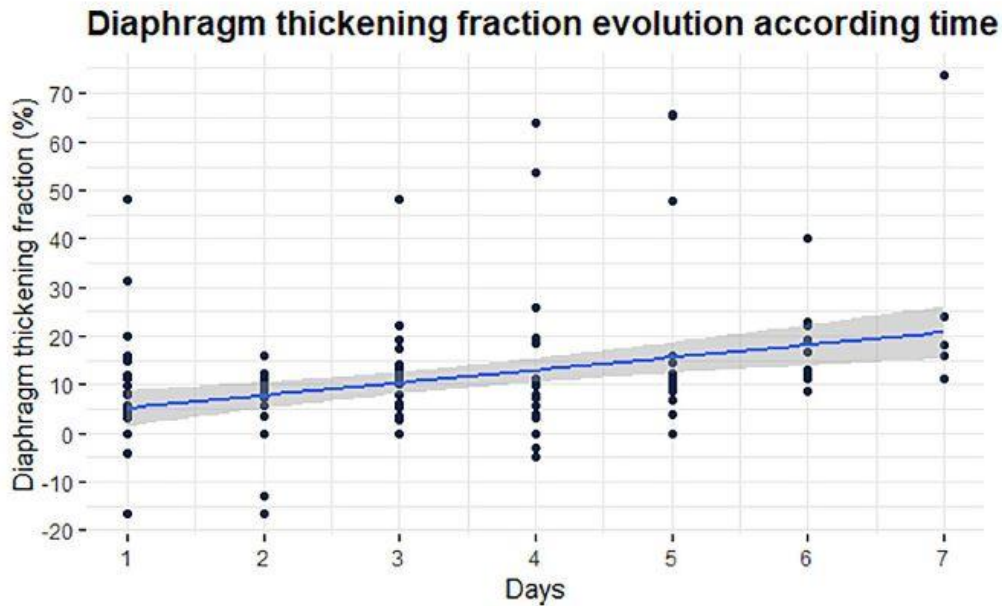
### **Outcome**

Patients' outcomes are detailed in Table 2. Notably, none of the patients liberated from mechanical ventilation before day 4 experienced diaphragm atrophy (Additional file 1: Table S8). Early extubation before day 4 was associated with significant alkalosis (p-value = 0.006), with lower sweep gas flow and PaCO<sub>2</sub> (p-value = 0.002 and p-value = 0.003), with no differences in PaO<sub>2</sub> or VAECMO flow (refer to Additional file 1: Figures S4-S7). Low diaphragm contractile did not exhibit an association with adverse outcomes (Additional file 1: Table S9).

Strikingly, none of the patient extubated before day 4 deceased within 60 days (p-value < 0.001). The OR of death at 60 days (Additional file 1: Table S10) for patients who experienced atrophy by day seven was 8.50 (95% CI [1.39; 74.09], p-value = 0.029). The model was adjusted for age, body mass index, cardiac arrest, SAPS2, the extubation at day 3 status and the presence of diaphragm atrophy by day 7. Further analysis of the patient deceased during this two months period is described in the Additional file 1: Table S11.

## **Discussion**

In a cohort of patients undergoing VA-ECMO for a cardiogenic shock, we observed frequent changes in diaphragm thickness (TEE), with a potential significant impact of an early extubation strategy in preventing myotrauma. Our study revealed that higher sweep gas flows and deeper acidosis were associated with increased diaphragm thickness. Notably, we described in our study that patients were preserved from diaphragm atrophy while a low early diaphragm contractile activity was maintained. Moreover, the presence of diaphragm atrophy was linked to higher mortality in this patient population.



**Fig. 4** Diaphragm thickening fraction (dTF) evolution during the first week after implantation of a VA-ECMO. The panel shows the daily diaphragm thickening fraction (dTF) evolution from baseline to the end of follow-up and expressed by percentage from baseline

**Table 2** Patients outcomes in patients with or without diaphragm atrophy

Variable	Patient outcomes according to three groups of diaphragm thickness evolution (: stable, atrophy, increase) using a ultrasound method				Patient outcomes according to the absence or the presence of diaphragm atrophy using a ultrasound method		
	Increase, N= 4 <sup>1</sup>	Decrease, N= 7 <sup>1</sup>	Stable, N= 18 <sup>1</sup>	p-value <sup>2</sup>	Non-atrophy, N= 22 <sup>1</sup>	Atrophy, N= 7 <sup>1</sup>	p-value <sup>3</sup>
Deceased before VA-ECMO weaning	1 (25%)	3 (43%)	4 (22%)	0.7	5 (23%)	3 (43%)	0.4
VA-ECMO weaning failure	1 (25%)	4 (57%)	7 (39%)	0.6	8 (36%)	4 (57%)	0.4
VA-ECMO days	5 [3, 8, 7]	4 [2, 6]	6.5 [4, 11]	0.2	6 [4, 10]	4 [2, 6]	0.10
Days with mechanical ventilation	4 [2, 5]	8 [7, 20]	5 [1, 11]	0.059	5 [1, 10]	8 [7, 20]	0.029
Ventilator free days at day 60	55 [40, 58]	7 [0, 29]	54 [20, 59]	0.056	54 [20, 59]	7 [0, 29]	0.018
Deceased at day 60	1 (25%)	5 (71%)	4 (22%)	0.063	5 (23%)	5 (71%)	0.030
Deceased at day 7	1 (25%)	3 (43%)	1 (5.6%)	0.059	2 (9.1%)	3 (43%)	0.075

Results are reported for patients according to their diaphragm evolution status at the end of patient follow up. The population was divided in three categories whether the diaphragm thickness presented a 10% decrease, increase or remained stable from baseline to the last assessment. Outcomes are presented after 60 days of follow-up (unless otherwise specified)

<sup>1</sup> n (%); Median [interquartile range]

<sup>2</sup> Fisher's exact test; Kruskal-Wallis rank sum test

<sup>3</sup> Fisher's exact test; Wilcoxon rank sum test

These findings raise important concerns regarding the safeguarding diaphragm thickness changes during VAECMO assistance, highlighting the importance of early extubation and careful titration of sweep gas flow and pH control.

### Diaphragm thickness evolution during VA-ECMO

Diaphragm thickness changes in ICU patients receiving mechanical ventilation have been recently studied, with reported occurrences of disuse atrophy or increased thickness in critically ill individuals [10, 11, 29]. In our study, we described the dynamics of thickness changes during cardiogenic shock with VA-ECMO, influenced by factors such as mechanical ventilation exposure, sweep gas flow and metabolic disorders.

The decrease in TEE in patients was observed in 23% of the population, and this decline was more prevalent in individuals experiencing adverse outcomes. While comparing the prevalence in our study to those conducted in ICU populations assisted by mechanical ventilation is challenging, the exposure to the primary underlying mechanism, mechanical ventilation, and its association with adverse outcomes align with established studies [20, 22].

Although we noted increased TEE in some patients, the clinical significance of this was limited due to the small number of cases and the use of a debatable 10% increase threshold [21]. Notably, we found no specific correlation with causes of edema due to kidney function impairment, sepsis and organ failures. Further studies are warranted to comprehensively grasp the incidence of increased thickness and its potential implications for patient outcomes.

### **Early extubation and outcomes association with lower diaphragm atrophy**

Our study suggests that patients who underwent early extubation while assisted by VA-ECMO may have experienced protection against diaphragm atrophy. However, it is crucial to note that our study establishes an association rather than causality. Nevertheless, our results align with literature, where the removal of respiratory assistance has been associated with lower atrophy [20]. The recent proposition that extracorporeal life support could mitigate diaphragm atrophy was also formulated recently [22]. Although this finding would need confirmations using a gold standard procedure such as magnetic stimulation of the phrenic nerves and muscle histology, the novelty of our findings lies in the potential diaphragm protection through early extubation of VA-ECMO assisted patients with a personalized intervention. Further, our finding that diaphragm atrophy was associated with a higher mortality at two months is consistent with previous study from Goligher et al. [22]. Although our study did not specifically address whether mitigating diaphragm atrophy mediated better outcomes, this hypothesis that preserving survivors from a respiratory myotrauma could positively impact outcomes remains a challenging question that requires further studies.

### **Contributors of diaphragm thickness evolution during VA-ECMO**

In our analysis, we found that factors such as mechanical ventilation, early administration of neuromuscular blocking agents, and vasoactive amines as associated with diaphragm atrophy, aligning with existing literature [13]. However, neuromuscular blocking agents monitoring was not included in our analysis, limiting conclusive insights into their influence. Remarkably, only a small number of our patients presented with sepsis, a known promoter of diaphragm atrophy and dysfunction [30]. Interestingly, the Insulin daily doses were correlated with TEE evolution, consistent with studies focusing on preserving muscle function through tight glycaemic control [31]. Although not confirmed in the MLM, this finding underscores the role of metabolic control.

Our findings suggest that diaphragm contractile activity, as measured by the thickening fraction, may not be directly correlated with the changes in diaphragm thickness during VA-ECMO treatment. We employed three statistical models, including univariable analysis, repeated measures correlation, and a MLM known for its efficiency in handling missing values, repeated measures, and factor variables simultaneously [28]. Also, the MLM permitted an analysis of TEE with sequential variation of expositions during the study period. However, disregarding the contractile activity per se as a mechanism of myotrauma in the context of VA-ECMO may oversimplify the situation, as the dTF represents a third of

respiratory efforts and exhibits individual variations [32, 33]. Thus, decoupling diaphragm contractile activity from changes in diaphragm thickness with VA-ECMO sweep gas flow may be a worthwhile pursuit to mitigate the impact of load-induced injuries in line with studies using neuromuscular blocking agents [19, 34].

The association of sweep gas flow with the TEE evolution emphasizes the importance of its careful titration [18]. In our model, we also identified that the acidosis balance was involved in the TEE evolution. Both factors are recognized contributors to homeostasis, with acidosis being a major contributor to respiratory drive [35], while sweep gas flow contributes to decarboxylation in extracorporeal life support [36].

## **Diaphragm contractile activity in cardiogenic shock**

### ***Prevalence of low diaphragm contractile activity***

In our study, the majority of patients demonstrated diaphragm contractile activity below 20% dTF until day 7 [8, 37]. These findings align with prior animal studies that indicated an initial reduction in contractility due to cardiogenic shock [17]. Specifically, over two-thirds of the patients exhibited a dTF < 20% during their first week of assistance, closely resembling recent findings in VV-ECMO patients. These findings were established using the gold standard for diaphragm function exploration, involving the change of endotracheal tube pressure induced by bilateral phrenic nerve stimulation during airway occlusion. This method was applied in highly sedated COVID-19 patients [38]. In the same paper, the contractility measured using the diaphragm thickening fraction method remained stable throughout the study period, unlike what was observed in VA-ECMO survivors.

### ***Contributors of low diaphragm contractile activity in cardiogenic shock***

This study did not reveal a clear association between low diaphragm contractile activity and potential risk factors. It is crucial to note that the effort condition varied throughout the study and the individual response to central drive output. However, along recent findings from our team [18], the sweep gas flow was associated with the thickening fraction evolution in the present study using MLM. In our previous paper, the systematic decrease in sweep gas flow was correlated with the diaphragm thickening fraction during a VA-ECMO weaning assessment [18]. Our results confirms the importance of careful sweep gas flow titration due to its interaction with diaphragm contractility.

### ***Diaphragm contractile activity and outcomes***

In the present study, no association between the contractile activity and patient outcomes was identified. Several factors could contribute to this finding. First, this study was not designed to evaluate the prognostic value of dTF on patient outcomes, lacking standardize weaning procedures, for instance. Secondly, existing literature does not consistently support the use of dTF as prognostic index for mechanical ventilation weaning either in high-risk ICU patient, those in cardiogenic shock, or undergoing cardiac surgery [14, 39, 40]. Thirdly, this longitudinal study involved critically ill patients with frequent multiple organ failure, leading to multifaceted treatment procedures and ever-evolving titration of the assistance. Consequently, respiratory efforts were constantly subject to numerous interfering factors, which was not the case of the diaphragm thickness.

## **Diaphragm protection with VA-ECMO**

This study provides evidence that low diaphragm contractility was observed in patient without diaphragm atrophy during VA-ECMO. The mechanism of diaphragm protection with low contractility in VA-ECMO patient are unclear. The preserved TEE at low dTF might be controversial in light of recent findings advocating for maintaining contraction through stimulation devices [41]. Furthermore, a landmark study from Goligher and al found that preserved thickness was more frequent when patients' thickening fraction varied in a range between 15 and 30% during mechanical ventilation [20]. Several factors can help reconcile this controversy. Firstly, the study populations differed, with a minority being septic patients known to promote diaphragm atrophy [30]. Secondly, VA-ECMO provided preserved hemodynamic and mitigated metabolic disorders. Thirdly, it is important to note that VA-ECMO bypasses the respiratory central command. Fourthly, patients were extubated early.

Revisiting the studies conducted by Aubier et al. in a cardiogenic shock model induced in dogs [17, 42, 43], they found that the initial increase in diaphragm effort was correlated with a decrease in oxygen delivery. The reduced cardiac output was associated with a decline in respiratory muscle blood flow, promoting anaerobic metabolic pathways, a situation alleviated by mechanical ventilation and muscle paralysis, both described as a promoter of diaphragm dysfunction induced by mechanical ventilation in later studies [11].

In summary, when shock is controlled with VA-ECMO, respiratory muscle blood flow might be sustained, resulting in minimal demand. Simultaneously, the downregulation from the central command might be intensified by the extracorporeal by-pass. In these circumstances, VA-ECMO may favour low contractile activity, early extubation and the preservation of diaphragm thickness changes.

### **Strength and limitations**

This study has notable strengths, including the use of a non-invasive technique for measuring diaphragm thickness and contractility, with data analyzed offline by a blinded operator. It is the first prospective study to assess diaphragm thickness changes in patients treated with extracorporeal life support.

However, there are several limitations. Firstly, the limited number of patients limited the inclusion of variables in the statistical analysis. Secondly, the study was observational and lacked a control group, making it challenging to determine the role of ventilation settings. Thirdly, the technique itself has limitations, especially regarding the reproducibility of thickness loss, particularly when using a 10% threshold. Fourthly, the study did not document the use of non-invasive ventilation or high-flow nasal cannula, considering all patients as extubated due to the small sample size. Fifthly, the evolution of diaphragm changes beyond one week of VA-ECMO initiation was not measured. Lastly, this was a single-center study, limiting its generalizability.

## **Conclusion**

In summary, fewer cases of progressive atrophy were described when early extubation was possible. The association between decrease in diaphragm thickness and lower mortality at two months needs further confirmation in larger studies. Variables related to cellular homeostasis and respiratory drive—i.e. acidosis and sweep gas flow—were linked to diaphragm structural modifications as assessed by ultrasound. The preserved diaphragm thickness in VA-ECMO survivors highlights the importance of implementing diaphragm-protective strategies, emphasizing the role of tight pH control through sweep gas flow titration for patients with cardiogenic shock.

## References

1. van Diepen S, Katz JN, Albert NM, Henry TD, Jacobs AK, Kapur NK, et al. Contemporary management of cardiogenic shock: a scientific statement from the American Heart Association. *Circulation*. 2017;136:e232–e268. - [PubMed](#)
2. Thiele H, Ohman EM, de Waha-Thiele S, Zeymer U, Desch S. Management of cardiogenic shock complicating myocardial infarction: an update 2019. *Eur Heart J*. 2019;40:2671–2683. doi: 10.1093/eurheartj/ehz363. - [DOI](#) - [PubMed](#)
3. Meyer FJ, Borst MM, Zugck C, Kirschke A, Schellberg D, Kübler W, et al. Respiratory muscle dysfunction in congestive heart failure: clinical correlation and prognostic significance. *Circulation*. 2001;103:2153–2158. doi: 10.1161/01.CIR.103.17.2153. - [DOI](#) - [PubMed](#)
4. Caruana L, Petrie MC, McMurray JJ, MacFarlane NG. Altered diaphragm position and function in patients with chronic heart failure. *Eur J Heart Fail*. 2001;3:183–187. doi: 10.1016/S1388-9842(00)00133-1. - [DOI](#) - [PubMed](#)
5. Bowen TS, Rolim NPL, Fischer T, Bækkerud FH, Medeiros A, Werner S, et al. Heart failure with preserved ejection fraction induces molecular, mitochondrial, histological, and functional alterations in rat respiratory and limb skeletal muscle. *Eur J Heart Fail*. 2015;17:263–272. doi: 10.1002/ejhf.239. - [DOI](#) - [PubMed](#)
6. Spiesshoefer J, Henke C, Kabitz HJ, Bengel P, Schütt K, Nofer J-R, et al. Heart failure results in inspiratory muscle dysfunction irrespective of left ventricular ejection fraction. *RES*. 2021;100:96–108. - [PubMed](#)
7. Spiesshoefer J, Boentert M, Tuleta I, Giannoni A, Langer D, Kabitz HJ. Diaphragm involvement in heart failure: mere consequence of hypoperfusion or mediated by HF-related pro-inflammatory cytokine storms? *Front Physiol*. 2019;10:1335. doi: 10.3389/fphys.2019.01335. - [DOI](#) - [PMC](#) - [PubMed](#)
8. Jung B, Moury PH, Mahul M, de Jong A, Galia F, Prades A, et al. Diaphragmatic dysfunction in patients with ICU-acquired weakness and its impact on extubation failure. *Intensive Care Med*. 2016;42:853–861. doi: 10.1007/s00134-015-4125-2. - [DOI](#) - [PubMed](#)
9. Dres M, Dubé B-P, Mayaux J, Delemazure J, Reuter D, Brochard L, et al. Coexistence and impact of limb muscle and diaphragm weakness at time of liberation from mechanical ventilation in medical ICU patients. *Am J Respir Crit Care Med*. 2016 doi: 10.1164/rccm.201602-0367OC. - [DOI](#) - [PubMed](#)
10. Levine S, Nguyen T, Taylor N, Friscia ME, Budak MT, Rothenberg P, et al. Rapid disuse atrophy of diaphragm fibers in mechanically ventilated humans. *N Engl J Med*. 2008;358:1327–1335. doi: 10.1056/NEJMoa070447. - [DOI](#) - [PubMed](#)
11. Jaber S, Petrof BJ, Jung B, Chanques G, Berthet J-P, Rabuel C, et al. Rapidly progressive diaphragmatic weakness and injury during mechanical ventilation in humans. *Am J Respir Crit Care Med*. 2010;183:364–371. doi: 10.1164/rccm.201004-0670OC. - [DOI](#) - [PubMed](#)
12. Demoule A, Jung B, Prodanovic H, Molinari N, Chanques G, Coirault C, et al. Diaphragm dysfunction on admission to the intensive care unit. Prevalence, risk factors, and prognostic impact—a prospective study. *Am J Respir Crit Care Med*. 2013;188:213–219. doi: 10.1164/rccm.201209-1668OC. - [DOI](#) - [PubMed](#)
13. Dres M, Goligher EC, Heunks LMA, Brochard LJ. Critical illness-associated diaphragm weakness. *Intensive Care Med*. 2017;43:1441–1452. doi: 10.1007/s00134-017-4928-4. - [DOI](#) - [PubMed](#)

14. Moury P-H, Cuisinier A, Durand M, Bosson J-L, Chavanon O, Payen J-F, et al. Diaphragm thickening in cardiac surgery: a perioperative prospective ultrasound study. *Ann Intensive Care*. 2019;9:50. doi: 10.1186/s13613-019-0521-z. - [DOI](#) - [PMC](#) - [PubMed](#)
15. Goligher EC, Dres M, Patel BK, Sahetya SK, Beitler JR, Telias I, et al. Lung- and diaphragm-protective ventilation. *Am J Respir Crit Care Med*. 2020;202:950–961. doi: 10.1164/rccm.202003-0655CP. - [DOI](#) - [PMC](#) - [PubMed](#)
16. Goligher EC, Dres M, Fan E, Rubenfeld GD, Scales DC, Herridge MS, et al. Mechanical ventilation-induced diaphragm atrophy strongly impacts clinical outcomes. *Am J Respir Crit Care Med*. 2018;197:204–213. doi: 10.1164/rccm.201703-0536OC. - [DOI](#) - [PubMed](#)
17. Aubier M, Trippebach T, Roussos C. Respiratory muscle fatigue during cardiogenic shock. *J Appl Physiol Respir Environ Exerc Physiol*. 1981;51:499–508. - [PubMed](#)
18. Moury PH, Zunarelli R, Bailly S, Durand Z, Béhouche A, Garein M, et al. Diaphragm thickening during venoarterial extracorporeal membrane oxygenation weaning: an observational prospective study. *J Cardiothorac Vasc Anesth*. 2021;35:1981–1988. doi: 10.1053/j.jvca.2020.10.047. - [DOI](#) - [PubMed](#)
19. Dianti J, Fard S, Wong J, Chan TCY, Del Sorbo L, Fan E, et al. Strategies for lung- and diaphragm-protective ventilation in acute hypoxemic respiratory failure: a physiological trial. *Crit Care*. 2022;26:1–10. doi: 10.1186/s13054-022-04123-9. - [DOI](#) - [PMC](#) - [PubMed](#)
20. Goligher EC, Fan E, Herridge MS, Murray A, Vorona S, Brace D, et al. Evolution of diaphragm thickness during mechanical ventilation. Impact of inspiratory effort. *Am J Respir Crit Care Med*. 2015;192:1080–1088. doi: 10.1164/rccm.201503-0620OC. - [DOI](#) - [PubMed](#)
21. Haaksma ME, Smit JM, Boussuges A, Demoule A, Dres M, Ferrari G, et al. EXpert consensus On Diaphragm UltraSonography in the critically ill (EXODUS): a Delphi consensus statement on the measurement of diaphragm ultrasound-derived parameters in a critical care setting. *Crit Care*. 2022;26:99. doi: 10.1186/s13054-022-03975-5. - [DOI](#) - [PMC](#) - [PubMed](#)
22. Goligher EC, Brochard LJ, Reid WD, Fan E, Saarela O, Slutsky AS, et al. Diaphragmatic myotrauma: a mediator of prolonged ventilation and poor patient outcomes in acute respiratory failure. *Lancet Respir Med*. 2019;7:90–98. doi: 10.1016/S2213-2600(18)30366-7. - [DOI](#) - [PubMed](#)
23. Gottesman E, McCool FD. Ultrasound evaluation of the paralyzed diaphragm. *Am J Respir Crit Care Med*. 1997;155:1570–1574. doi: 10.1164/ajrccm.155.5.9154859. - [DOI](#) - [PubMed](#)
24. Matamis D, Soilemezi E, Tzagourias M, Akoumianaki E, Dimassi S, Boroli F, et al. Sonographic evaluation of the diaphragm in critically ill patients. Technique and clinical applications. *Intensive Care Med*. 2013;39:801–810. doi: 10.1007/s00134-013-2823-1. - [DOI](#) - [PubMed](#)
25. Schiller NB, Shah PM, Crawford M, DeMaria A, Devereux R, Feigenbaum H, et al. Recommendations for quantitation of the left ventricle by two-dimensional echocardiography. American Society of Echocardiography Committee on Standards, Subcommittee on Quantitation of Two-Dimensional Echocardiograms. *J Am Soc Echocardiogr*. 1989;2:358–367. doi: 10.1016/S0894-7317(89)80014-8. - [DOI](#) - [PubMed](#)



26. Sievers B, Kirchberg S, Franken U, Puthenveettil B-J, Bakan A, Trappe H-J. Visual estimation versus quantitative assessment of left ventricular ejection fraction: a comparison by cardiovascular magnetic resonance imaging. *Am Heart J*. 2005;150:737–742. doi: 10.1016/j.ahj.2004.11.017. - [DOI](#) - [PubMed](#)
27. Bakdash JZ, Marusich LR. Repeated measures correlation. *Front Psychol*. 2017 doi: 10.3389/fpsyg.2017.00456. - [DOI](#) - [PMC](#) - [PubMed](#)
28. Harrison XA, Donaldson L, Correa-Cano ME, Evans J, Fisher DN, Goodwin CED, et al. A brief introduction to mixed effects modelling and multi-model inference in ecology. *PeerJ*. 2018;6:e4794. doi: 10.7717/peerj.4794. - [DOI](#) - [PMC](#) - [PubMed](#)
29. Sassoon CS, Caiozzo VJ. Bench-to-bedside review: diaphragm muscle function in disuse and acute high-dose corticosteroid treatment. *Crit Care*. 2009;13:221. doi: 10.1186/cc7971. - [DOI](#) - [PMC](#) - [PubMed](#)
30. Jung B, Nougaret S, Conseil M, Coisel Y, Futier E, Chanques G, et al. Sepsis is associated with a preferential diaphragmatic atrophy: a critically ill patient study using tridimensional computed tomography. *Anesthesiology*. 2014;120:1182–1191. doi: 10.1097/ALN.000000000000201. - [DOI](#) - [PubMed](#)
31. Hermans G, Wilmer A, Meersseman W, Milants I, Wouters PJ, Bobbaers H, et al. Impact of intensive insulin therapy on neuromuscular complications and ventilator dependency in the medical intensive care unit. *Am J Respir Crit Care Med*. 2007;175:480–489. doi: 10.1164/rccm.200605-665OC. - [DOI](#) - [PubMed](#)
32. Vivier E, Mekontso Dessap A, Dimassi S, Vargas F, Lyazidi A, Thille AW, et al. Diaphragm ultrasonography to estimate the work of breathing during non-invasive ventilation. *Intensive Care Med*. 2012;38:796–803. doi: 10.1007/s00134-012-2547-7. - [DOI](#) - [PubMed](#)
33. Umbrello M, Formenti P, Longhi D, Galimberti A, Piva I, Pezzi A, et al. Diaphragm ultrasound as indicator of respiratory effort in critically ill patients undergoing assisted mechanical ventilation: a pilot clinical study. *Crit Care*. 2015;19. Available from: <http://ccforum.com/content/19/1/161>. - [PMC](#) - [PubMed](#)
34. de Vries HJ, Jonkman AH, de Grooth HJ, Duitman JW, Girbes ARJ, Ottenheijm CAC, et al. Lung- and diaphragm-protective ventilation by titrating inspiratory support to diaphragm effort: a randomized clinical trial. *Crit Care Med*. 2022;50:192–203. doi: 10.1097/CCM.0000000000005395. - [DOI](#) - [PMC](#) - [PubMed](#)
35. Jonkman AH, de Vries HJ, Heunks LMA. Physiology of the respiratory drive in ICU patients: implications for diagnosis and treatment. *Crit Care*. 2020;24:104. doi: 10.1186/s13054-020-2776-z. - [DOI](#) - [PMC](#) - [PubMed](#)
36. Schmidt M, Tachon G, Devilliers C, Muller G, Hekimian G, Bréchet N, et al. Blood oxygenation and decarboxylation determinants during venovenous ECMO for respiratory failure in adults. *Intensive Care Med*. 2013;39:838–846. doi: 10.1007/s00134-012-2785-8. - [DOI](#) - [PubMed](#)
37. McCool FD, Tzelepis GE. Dysfunction of the diaphragm. *N Engl J Med*. 2012;366:932–942. doi: 10.1056/NEJMra1007236. - [DOI](#) - [PubMed](#)
38. Gautier M, Jousselein V, Ropers J, El Houari L, Demoule A, Similowski T, et al. Diaphragm function in patients with Covid-19-related acute respiratory distress syndrome on venovenous extracorporeal membrane oxygenation. *Ann Intensive Care*. 2023;13:92. doi: 10.1186/s13613-023-01179-w. - [DOI](#) - [PMC](#) - [PubMed](#)
39. Moury PH. Diaphragm thickening during venoarterial extracorporeal membrane oxygenation weaning: an observational prospective study. *J Cardiothoracic Vascular Anesthesia*. 2021;35:1981. doi: 10.1053/j.jvca.2020.10.047. - [DOI](#) - [PubMed](#)

40. Vivier E, Muller M, Putegnât J-B, Steyer J, Barrau S, Boissier F, et al. Inability of diaphragm ultrasound to predict extubation failure. *Chest*. 2019;155:1131–1139. doi: 10.1016/j.chest.2019.03.004. - [DOI](#) - [PubMed](#)
41. Dres M, de Abreu MG, Merdji H, Müller-Redetzky H, Dellweg D, Randerath WJ, et al. Randomized clinical study of temporary transvenous phrenic nerve stimulation in difficult-to-wean patients. *Am J Respir Crit Care Med*. 2022;205:1169–1178. doi: 10.1164/rccm.202107-1709OC. - [DOI](#) - [PMC](#) - [PubMed](#)
42. Aubier M, Viïres N, Syllie G, Mozes R, Roussos C. Respiratory muscle contribution to lactic acidosis in low cardiac output. *Am Rev Respir Dis*. 1982;126:648–652. - [PubMed](#)
43. Viïres N, Sillye G, Aubier M, Rassidakis A, Roussos C. Regional blood flow distribution in dog during induced hypotension and low cardiac output. Spontaneous breathing versus artificial ventilation. *J Clin Invest*. 1983;72:935–947. doi: 10.1172/JCI111065. - [DOI](#) - [PMC](#) - [PubMed](#)

# Abstract

## Background:

The incidence, causes and impact of diaphragm thickness evolution in veno-arterial extracorporeal membrane oxygenation (VA-ECMO) for cardiogenic shock are unknown. Our study investigates its evolution during the first week of VA-ECMO and its relationship with sweep gas flow settings.

## Methods:

We conducted a prospective monocentric observational study in a 12-bed ICU in France, enrolling patients on the day of the VA-ECMO implantation. The diaphragm thickness and the diaphragm thickening fraction (as index of contractile activity, dTF; dTF < 20% defined a low contractile activity) were daily measured for one week using ultrasound. Factors associated with diaphragm thickness evolution (categorized as increased, stable, or atrophic based on > 10% modification from baseline to the last measurement), early extubation role (< day4), and patients outcome at 60 days were investigated. Changes in diaphragm thickness, the primary endpoint, was analysed using a mixed-effect linear model (MLM).

## Results:

Of the 29 included patients, seven (23%) presented diaphragm atrophy, 18 remained stable (60%) and 4 exhibited an increase (17%). None of the 13 early-extubated patients experienced diaphragm atrophy, while 7 (46%) presented a decrease when extubated later (p-value = 0.008). Diaphragm thickness changes were not associated with the dTF (p-value = 0.13) but with sweep gas flow (Beta = - 3; Confidence Interval at 95% (CI) [- 4.8; - 1.2]. p-value = 0.001) and pH (Beta = - 2; CI [- 2.9; - 1]. p-value < 0.001) in MLM. The dTF remained low (< 20%) in 20 patients (69%) at the study's end and was associated with sweep gas flow evolution in MLM (Beta = - 2.8; 95% CI [- 5.2; - 0.5], p-value = 0.017). Odds ratio of death at 60 days in case of diaphragm atrophy by day 7 was 8.50 ([1.4-74], p = 0.029).

## Conclusion:

In our study, diaphragm thickness evolution was frequent and not associated with the diaphragm thickening fraction. Diaphragm was preserved from atrophy in case of early extubation with ongoing VA-ECMO assistance. Metabolic disorders resulting from organ failures and sweep gas flow were linked with diaphragm thickness evolution. Preserved diaphragm thickness in VA-ECMO survivors emphasizes the importance of diaphragm-protective strategies, including meticulous sweep gas flow titration.

## Acknowledgements

The authors would like to thank for their contributions the medical and nurse staff from the cardiovascular and thoracic anesthesiology and intensive care unit of the CHU Grenoble Alpes.

## **Author contributions**

PHM: designed the study, patient screening, data management, patient inclusions, statistical analyses, manuscript writing. SB: statistical analyses, manuscript writing. ZD: patient screening, data management, patient inclusions. AB: patient screening, data management, patient inclusions. GD: patient screening, data management. SJ: statistical analyses, manuscript writing. SV: statistical analyses, manuscript writing. PA: designed the study, statistical analyses, manuscript writing.

## **Funding**

This study was supported by institutional funding.

## **Availability of data and materials**

The datasets used and/or analysed during the current study are available from the corresponding author on reasonable request.

## **Declarations**

## **Ethics approval and consent to participate**

This study was approved on 16th of July 2019 (IRB number 2019-A01273-54), registered at ClinicalTrial.gov (NCT03736239) and conducted from October 2019 to February 2022. The need for written consent was waived according to French Law. Oral consent was obtained from each patient or from a close relative.

## **Consent for publication**

Not applicable.

## **Competing interests**

The authors declare that they have no competing interests

## **References**

1. van Diepen S, Katz JN, Albert NM, Henry TD, Jacobs AK, Kapur NK, et al. Contemporary management of cardiogenic shock: a scientific statement from the American Heart Association. *Circulation*. 2017;136:e232–e268. - [PubMed](#)
2. Thiele H, Ohman EM, de Waha-Thiele S, Zeymer U, Desch S. Management of cardiogenic shock complicating myocardial infarction: an update 2019. *Eur Heart J*. 2019;40:2671–2683. doi: 10.1093/eurheartj/ehz363. - [DOI](#) - [PubMed](#)
3. Meyer FJ, Borst MM, Zugck C, Kirschke A, Schellberg D, Kübler W, et al. Respiratory muscle dysfunction in congestive heart failure: clinical correlation and prognostic significance. *Circulation*. 2001;103:2153–2158. doi: 10.1161/01.CIR.103.17.2153. - [DOI](#) - [PubMed](#)

4. Caruana L, Petrie MC, McMurray JJ, MacFarlane NG. Altered diaphragm position and function in patients with chronic heart failure. *Eur J Heart Fail.* 2001;3:183–187. doi: 10.1016/S1388-9842(00)00133-1. - [DOI](#) - [PubMed](#)
5. Bowen TS, Rolim NPL, Fischer T, Bækkerud FH, Medeiros A, Werner S, et al. Heart failure with preserved ejection fraction induces molecular, mitochondrial, histological, and functional alterations in rat respiratory and limb skeletal muscle. *Eur J Heart Fail.* 2015;17:263–272. doi: 10.1002/ejhf.239. - [DOI](#) - [PubMed](#)
6. Spiesshoefer J, Henke C, Kabitz HJ, Bengel P, Schütt K, Nofer J-R, et al. Heart failure results in inspiratory muscle dysfunction irrespective of left ventricular ejection fraction. *RES.* 2021;100:96–108. - [PubMed](#)
7. Spiesshoefer J, Boentert M, Tuleta I, Giannoni A, Langer D, Kabitz HJ. Diaphragm involvement in heart failure: mere consequence of hypoperfusion or mediated by HF-related pro-inflammatory cytokine storms? *Front Physiol.* 2019;10:1335. doi: 10.3389/fphys.2019.01335. - [DOI](#) - [PMC](#) - [PubMed](#)
8. Jung B, Moury PH, Mahul M, de Jong A, Galia F, Prades A, et al. Diaphragmatic dysfunction in patients with ICU-acquired weakness and its impact on extubation failure. *Intensive Care Med.* 2016;42:853–861. doi: 10.1007/s00134-015-4125-2. - [DOI](#) - [PubMed](#)
9. Dres M, Dubé B-P, Mayaux J, Delemazure J, Reuter D, Brochard L, et al. Coexistence and impact of limb muscle and diaphragm weakness at time of liberation from mechanical ventilation in medical ICU patients. *Am J Respir Crit Care Med.* 2016 doi: 10.1164/rccm.201602-0367OC. - [DOI](#) - [PubMed](#)
10. Levine S, Nguyen T, Taylor N, Friscia ME, Budak MT, Rothenberg P, et al. Rapid disuse atrophy of diaphragm fibers in mechanically ventilated humans. *N Engl J Med.* 2008;358:1327–1335. doi: 10.1056/NEJMoa070447. - [DOI](#) - [PubMed](#)
11. Jaber S, Petrof BJ, Jung B, Chanques G, Berthet J-P, Rabuel C, et al. Rapidly progressive diaphragmatic weakness and injury during mechanical ventilation in humans. *Am J Respir Crit Care Med.* 2010;183:364–371. doi: 10.1164/rccm.201004-0670OC. - [DOI](#) - [PubMed](#)
12. Demoule A, Jung B, Prodanovic H, Molinari N, Chanques G, Coirault C, et al. Diaphragm dysfunction on admission to the intensive care unit. Prevalence, risk factors, and prognostic impact—a prospective study. *Am J Respir Crit Care Med.* 2013;188:213–219. doi: 10.1164/rccm.201209-1668OC. - [DOI](#) - [PubMed](#)
13. Dres M, Goligher EC, Heunks LMA, Brochard LJ. Critical illness-associated diaphragm weakness. *Intensive Care Med.* 2017;43:1441–1452. doi: 10.1007/s00134-017-4928-4. - [DOI](#) - [PubMed](#)
14. Moury P-H, Cuisinier A, Durand M, Bosson J-L, Chavanon O, Payen J-F, et al. Diaphragm thickening in cardiac surgery: a perioperative prospective ultrasound study. *Ann Intensive Care.* 2019;9:50. doi: 10.1186/s13613-019-0521-z. - [DOI](#) - [PMC](#) - [PubMed](#)
15. Goligher EC, Dres M, Patel BK, Sahetya SK, Beitler JR, Telias I, et al. Lung- and diaphragm-protective ventilation. *Am J Respir Crit Care Med.* 2020;202:950–961. doi: 10.1164/rccm.202003-0655CP. - [DOI](#) - [PMC](#) - [PubMed](#)
16. Goligher EC, Dres M, Fan E, Rubenfeld GD, Scales DC, Herridge MS, et al. Mechanical ventilation-induced diaphragm atrophy strongly impacts clinical outcomes. *Am J Respir Crit Care Med.* 2018;197:204–213. doi: 10.1164/rccm.201703-0536OC. - [DOI](#) - [PubMed](#)

17. Aubier M, Trippebach T, Roussos C. Respiratory muscle fatigue during cardiogenic shock. *J Appl Physiol Respir Environ Exerc Physiol*. 1981;51:499–508. - [PubMed](#)
18. Moury PH, Zunarelli R, Bailly S, Durand Z, Béhouche A, Garein M, et al. Diaphragm thickening during venoarterial extracorporeal membrane oxygenation weaning: an observational prospective study. *J Cardiothorac Vasc Anesth*. 2021;35:1981–1988. doi: 10.1053/j.jvca.2020.10.047. - [DOI](#) - [PubMed](#)
19. Dianti J, Fard S, Wong J, Chan TCY, Del Sorbo L, Fan E, et al. Strategies for lung- and diaphragm-protective ventilation in acute hypoxemic respiratory failure: a physiological trial. *Crit Care*. 2022;26:1–10. doi: 10.1186/s13054-022-04123-9. - [DOI](#) - [PMC](#) - [PubMed](#)
20. Goligher EC, Fan E, Herridge MS, Murray A, Vorona S, Brace D, et al. Evolution of diaphragm thickness during mechanical ventilation. Impact of inspiratory effort. *Am J Respir Crit Care Med*. 2015;192:1080–1088. doi: 10.1164/rccm.201503-0620OC. - [DOI](#) - [PubMed](#)
21. Haaksma ME, Smit JM, Boussuges A, Demoule A, Dres M, Ferrari G, et al. EXpert consensus On Diaphragm UltraSonography in the critically ill (EXODUS): a Delphi consensus statement on the measurement of diaphragm ultrasound-derived parameters in a critical care setting. *Crit Care*. 2022;26:99. doi: 10.1186/s13054-022-03975-5. - [DOI](#) - [PMC](#) - [PubMed](#)
22. Goligher EC, Brochard LJ, Reid WD, Fan E, Saarela O, Slutsky AS, et al. Diaphragmatic myotrauma: a mediator of prolonged ventilation and poor patient outcomes in acute respiratory failure. *Lancet Respir Med*. 2019;7:90–98. doi: 10.1016/S2213-2600(18)30366-7. - [DOI](#) - [PubMed](#)
23. Gottesman E, McCool FD. Ultrasound evaluation of the paralyzed diaphragm. *Am J Respir Crit Care Med*. 1997;155:1570–1574. doi: 10.1164/ajrccm.155.5.9154859. - [DOI](#) - [PubMed](#)
24. Matamis D, Soilemezi E, Tsagourias M, Akoumianaki E, Dimassi S, Boroli F, et al. Sonographic evaluation of the diaphragm in critically ill patients. Technique and clinical applications. *Intensive Care Med*. 2013;39:801–810. doi: 10.1007/s00134-013-2823-1. - [DOI](#) - [PubMed](#)
25. Schiller NB, Shah PM, Crawford M, DeMaria A, Devereux R, Feigenbaum H, et al. Recommendations for quantitation of the left ventricle by two-dimensional echocardiography. American Society of Echocardiography Committee on Standards, Subcommittee on Quantitation of Two-Dimensional Echocardiograms. *J Am Soc Echocardiogr*. 1989;2:358–367. doi: 10.1016/S0894-7317(89)80014-8. - [DOI](#) - [PubMed](#)
26. Sievers B, Kirchberg S, Franken U, Puthenveetil B-J, Bakan A, Trappe H-J. Visual estimation versus quantitative assessment of left ventricular ejection fraction: a comparison by cardiovascular magnetic resonance imaging. *Am Heart J*. 2005;150:737–742. doi: 10.1016/j.ahj.2004.11.017. - [DOI](#) - [PubMed](#)
27. Bakdash JZ, Marusich LR. Repeated measures correlation. *Front Psychol*. 2017 doi: 10.3389/fpsyg.2017.00456. - [DOI](#) - [PMC](#) - [PubMed](#)
28. Harrison XA, Donaldson L, Correa-Cano ME, Evans J, Fisher DN, Goodwin CED, et al. A brief introduction to mixed effects modelling and multi-model inference in ecology. *PeerJ*. 2018;6:e4794. doi: 10.7717/peerj.4794. - [DOI](#) - [PMC](#) - [PubMed](#)
29. Sassoon CS, Caiozzo VJ. Bench-to-bedside review: diaphragm muscle function in disuse and acute high-dose corticosteroid treatment. *Crit Care*. 2009;13:221. doi: 10.1186/cc7971. - [DOI](#) - [PMC](#) - [PubMed](#)

30. Jung B, Nougaret S, Conseil M, Coisel Y, Futier E, Chanques G, et al. Sepsis is associated with a preferential diaphragmatic atrophy: a critically ill patient study using tridimensional computed tomography. *Anesthesiology*. 2014;120:1182–1191. doi: 10.1097/ALN.000000000000201. - [DOI](#) - [PubMed](#)
31. Hermans G, Wilmer A, Meersseman W, Milants I, Wouters PJ, Bobbaers H, et al. Impact of intensive insulin therapy on neuromuscular complications and ventilator dependency in the medical intensive care unit. *Am J Respir Crit Care Med*. 2007;175:480–489. doi: 10.1164/rccm.200605-665OC. - [DOI](#) - [PubMed](#)
32. Vivier E, Mekontso Dessap A, Dimassi S, Vargas F, Lyazidi A, Thille AW, et al. Diaphragm ultrasonography to estimate the work of breathing during non-invasive ventilation. *Intensive Care Med*. 2012;38:796–803. doi: 10.1007/s00134-012-2547-7. - [DOI](#) - [PubMed](#)
33. Umbrello M, Formenti P, Longhi D, Galimberti A, Piva I, Pezzi A, et al. Diaphragm ultrasound as indicator of respiratory effort in critically ill patients undergoing assisted mechanical ventilation: a pilot clinical study. *Crit Care*. 2015;19. Available from: <http://ccforum.com/content/19/1/161>. - [PMC](#) - [PubMed](#)
34. de Vries HJ, Jonkman AH, de Grooth HJ, Duitman JW, Girbes ARJ, Ottenheijm CAC, et al. Lung- and diaphragm-protective ventilation by titrating inspiratory support to diaphragm effort: a randomized clinical trial. *Crit Care Med*. 2022;50:192–203. doi: 10.1097/CCM.0000000000005395. - [DOI](#) - [PMC](#) - [PubMed](#)
35. Jonkman AH, de Vries HJ, Heunks LMA. Physiology of the respiratory drive in ICU patients: implications for diagnosis and treatment. *Crit Care*. 2020;24:104. doi: 10.1186/s13054-020-2776-z. - [DOI](#) - [PMC](#) - [PubMed](#)
36. Schmidt M, Tachon G, Devilliers C, Muller G, Hekimian G, Bréchet N, et al. Blood oxygenation and decarboxylation determinants during venovenous ECMO for respiratory failure in adults. *Intensive Care Med*. 2013;39:838–846. doi: 10.1007/s00134-012-2785-8. - [DOI](#) - [PubMed](#)
37. McCool FD, Tzelepis GE. Dysfunction of the diaphragm. *N Engl J Med*. 2012;366:932–942. doi: 10.1056/NEJMra1007236. - [DOI](#) - [PubMed](#)
38. Gautier M, Jousselein V, Ropers J, El Houari L, Demoule A, Similowski T, et al. Diaphragm function in patients with Covid-19-related acute respiratory distress syndrome on venovenous extracorporeal membrane oxygenation. *Ann Intensive Care*. 2023;13:92. doi: 10.1186/s13613-023-01179-w. - [DOI](#) - [PMC](#) - [PubMed](#)
39. Moury PH. Diaphragm thickening during venoarterial extracorporeal membrane oxygenation weaning: an observational prospective study. *J Cardiothoracic Vascular Anesthesia*. 2021;35:1981. doi: 10.1053/j.jvca.2020.10.047. - [DOI](#) - [PubMed](#)
40. Vivier E, Muller M, Putegnat J-B, Steyer J, Barrau S, Boissier F, et al. Inability of diaphragm ultrasound to predict extubation failure. *Chest*. 2019;155:1131–1139. doi: 10.1016/j.chest.2019.03.004. - [DOI](#) - [PubMed](#)
41. Dres M, de Abreu MG, Merdji H, Müller-Redetzky H, Dellweg D, Randerath WJ, et al. Randomized clinical study of temporary transvenous phrenic nerve stimulation in difficult-to-wean patients. *Am J Respir Crit Care Med*. 2022;205:1169–1178. doi: 10.1164/rccm.202107-1709OC. - [DOI](#) - [PMC](#) - [PubMed](#)
42. Aubier M, Viires N, Syllie G, Mozes R, Roussos C. Respiratory muscle contribution to lactic acidosis in low cardiac output. *Am Rev Respir Dis*. 1982;126:648–652. - [PubMed](#)
43. Viires N, Sillye G, Aubier M, Rassidakis A, Roussos C. Regional blood flow distribution in dog during induced hypotension and low cardiac output. Spontaneous breathing versus artificial ventilation. *J Clin Invest*. 1983;72:935–947. doi: 10.1172/JCI111065. - [DOI](#) - [PMC](#) - [PubMed](#)