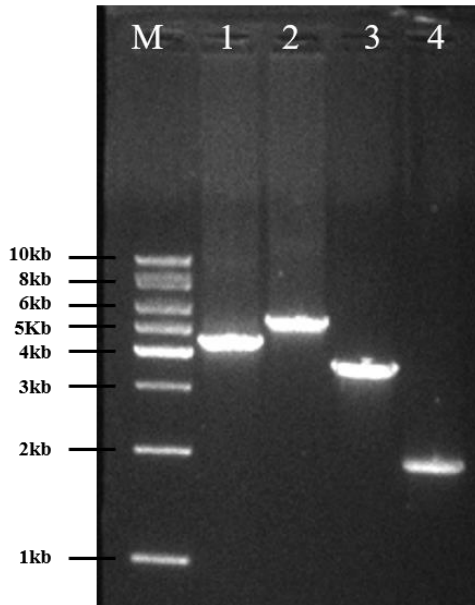
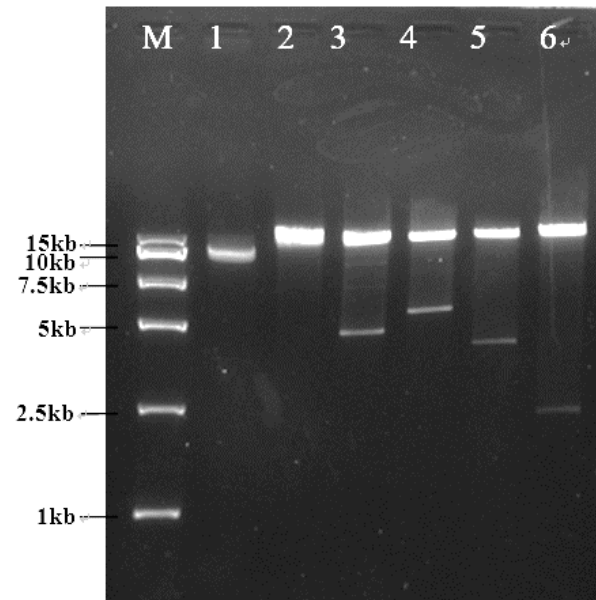


A**B**

Additional file 1. Construction of rHLJB1 recombination plasmid. (A) The four overlapped fragment of the full-length HLJB1 genome were generated by PCR amplification. M: DNA Marker, 1-4: F1-F4 fragments of HLJB1 isolate. (B) The pACYC177-CMV-rHLJB1 recombination plasmid (abbreviated as rHLJB1) was digested with corresponding digestion enzymes to confirm the successful construction of full-length cDNA clone of HLJB1 isolate. M: DNA Marker, 1: rHLJB1 without digestion, 2: rHLJB1 digested with *SgsI*, 3-6: rHLJB1 double-digested with *SgsI*+*Pfl23II*, *Pfl23II*+*BglII*, *BglII*+*Bsp1407I*, *Bsp1407I*+*XbaI*, respectively.