



HAL
open science

Differential exposure to climate extremes in two Neotropical agroforestry areas

Andres Fernando Gonzalez-Gonzalez, Juan F Fernández-Manjarrés

► **To cite this version:**

Andres Fernando Gonzalez-Gonzalez, Juan F Fernández-Manjarrés. Differential exposure to climate extremes in two Neotropical agroforestry areas. 1ère journée scientifique de C-BASC, Mar 2023, Gif sur Yvette, France. hal-04494322

HAL Id: hal-04494322

<https://hal.science/hal-04494322v1>

Submitted on 7 Mar 2024

HAL is a multi-disciplinary open access archive for the deposit and dissemination of scientific research documents, whether they are published or not. The documents may come from teaching and research institutions in France or abroad, or from public or private research centers.

L'archive ouverte pluridisciplinaire **HAL**, est destinée au dépôt et à la diffusion de documents scientifiques de niveau recherche, publiés ou non, émanant des établissements d'enseignement et de recherche français ou étrangers, des laboratoires publics ou privés.

Differential exposure to climate extremes in two Neotropical agroforestry areas

Andres González-González¹ and Juan Fernández-Manjarrés^{1,2}

1. Laboratoire ESE, CNRS/AgroParisTech/Université-Paris-Saclay; Ecological Trajectories and Society, PhD student
2. Centre national de la recherche scientifique (CNRS)

Introduction

Agricultural systems in general are **vulnerable to climate extremes** (Anderson et al., 2017, 2018). In South America (SA), extreme climate events are highly influenced by the El Niño Southern Oscillation (ENSO) through **teleconnections** between the Pacific Ocean and the continent during its two phases: El Niño and La Niña. However, the effects of the ENSO events on agroforestry systems have not been thoroughly studied, especially, in relation to the magnitude, temporality and the time lags of the ENSO phases over the continent. Climate change will likely increase the precipitation variance of the ENSO events meaning that the El Niño years will be drier and La Niña years will be wetter than pre-industrial conditions (Eyring et al., 2021) further impacting the peasants that depend on the agroforestry systems of the area.

Objective

The general objective of our research is to characterize **the exposure** of two target Neotropical areas to the climatic extremes induced by the ENSO cycles.

The target sites (Figure 1) have contrasting ecologies: The first, Caldas (Colombia), is located between the central and western cordillera of the Andes, with an elevation range from 170 to 5,400 m.a.s.l. and is mostly cultivated with **shade coffee**. The second, Manabí (Ecuador), is a coastal zone with an elevation range from 0 to 500 m.a.s.l., and is mostly cultivated with **shade cacao** plantations.

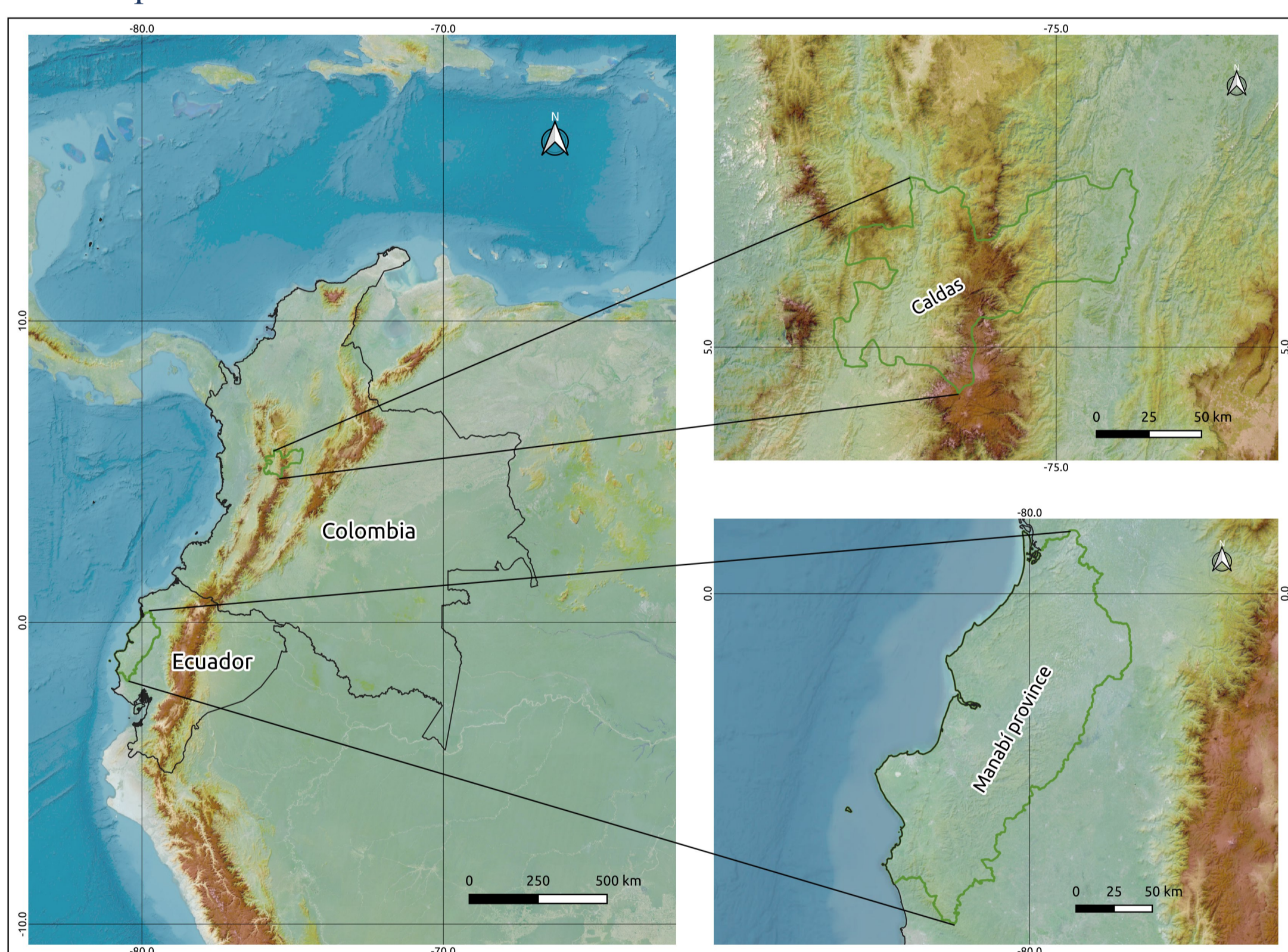
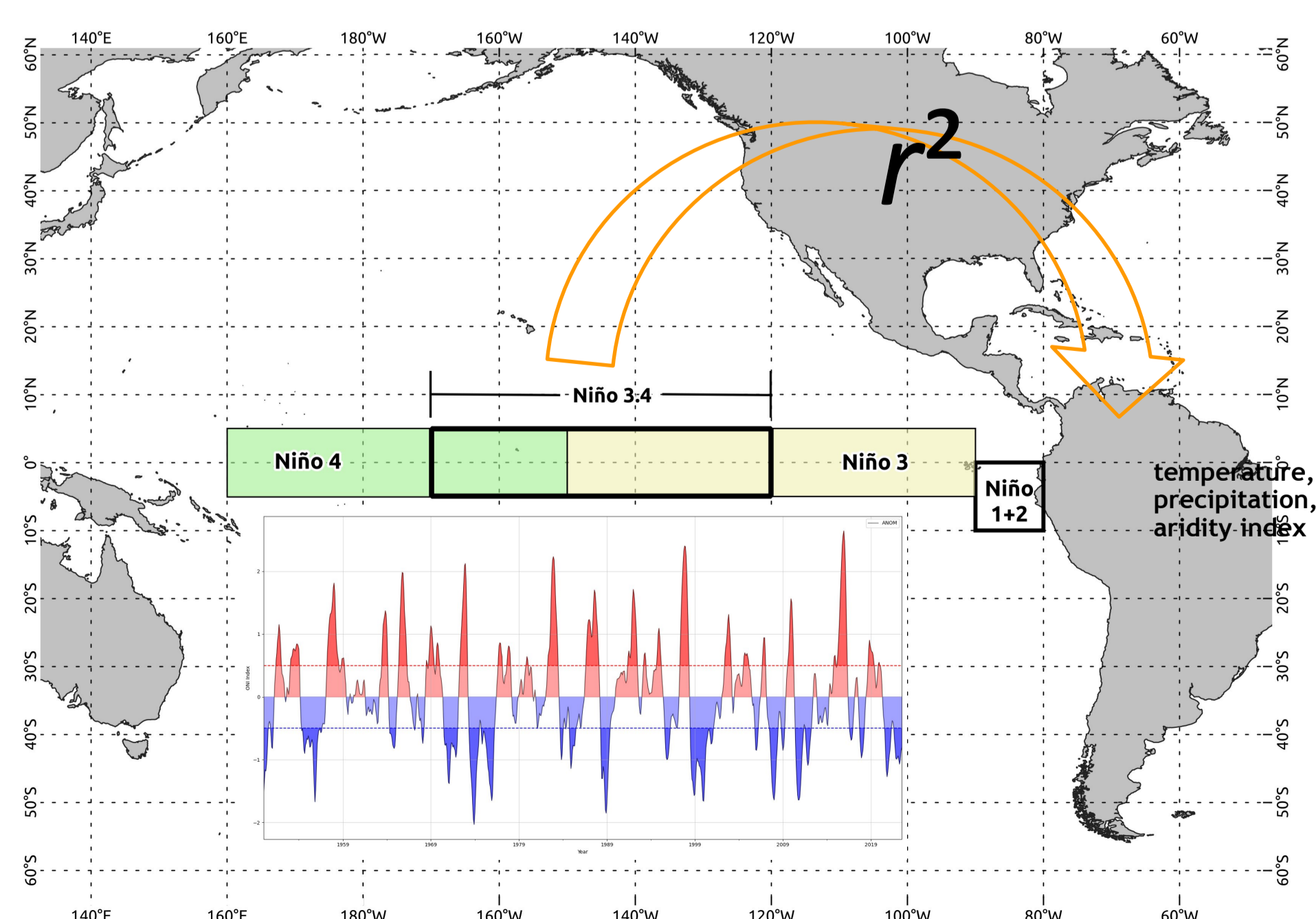


Figure 1. Target agroforestry areas

Methods

Correlation analyses (Spearman's rank correlation) of meteorological variables of Equatorial America areas and the ENSO3.4 index of the Pacific Ocean were carried out to detect the degree of exposure of the agroforestry systems to ENSO phases. For doing so, time series of maximum temperature, annual precipitation and aridity index were constructed using the same 3 month running mean of the NOAA-ENSO databases. Terrestrial anomalies were estimated using a moving 5-year period for a 30 year window average. The analyzed period was 1970-2020. The Terra-Climate database was used through the Google Earth Engine platform.



Preliminary results

The difference in exposure between Caldas and Manabí is expressed in four variables: Maximum Temperature, Precipitation, Palmer Drought Severity Index (PDSI) and Soil Moisture (Figure 2). While Manabí shows stronger positive correlations in maximum temperature and precipitation with the El Niño phenomenon, Caldas shows a strong positive correlation in maximum temperature, but a negative correlation in precipitation, meaning that in both zones temperatures are higher during a Niño, but the **effect is reversed in precipitation**. Consequently, in Caldas a strong negative correlation is observed with the PDSI and the soil moisture variable, indicating greater water stress in this area. These effects are reversed when the La Niña phenomenon is taken into account.

Manabí, Ecuador Caldas, Colombia

Figure 2. Correlation (r^2) between meteorological variables and ENSO3.4 as a proxy of exposure to climatic extremes for the 1970-2020 period

Future work

Future work of the research will include the ecosystemic response of the agroforestry areas using remote sensing data (eg. NDVI) in selected ENSO episodes (e.g., 1982-83, 1997-98, or/and 2015-16) to conduct a *before* and *after* analysis

References

- Anderson, W., Seager, R., Baethgen, W., & Cane, M. (2017). Life cycles of agriculturally relevant ENSO teleconnections in North and South America. *International Journal of Climatology*, 37(8), 3297–3318. <https://doi.org/10.1002/joc.4916>
- Anderson, W., Seager, R., Baethgen, W., & Cane, M. (2018). Trans-Pacific ENSO teleconnections pose a correlated risk to agriculture. *Agricultural and Forest Meteorology*, 262, 298–309. <https://doi.org/10.1016/j.agrformet.2018.07.023>
- Eyring, V., Gillett, N. P., Achutarao, K. M., Barimalala, R., Barreiro Parrillo, M., Bellouin, N., Cassou, C., Durack, P. J., Kosaka, Y., McGregor, S., Min, S.-K., Morgenstern, O., & Sun, Y. (2021). Human influence on the climate system. In V. Masson-Delmotte, P. Zhai, A. Pirani, S. L. Connors, C. Péan, S. Berger, N. Caud, Y. Chen, L. Goldfarb, M. I. Gomis, M. Huang, K. Leitzell, E. Lonnoy, J. B. R. Matthews, T. K. Maycock, T. Waterfield, Ö. Yelekçi, R. Yu, & B. Zhou (Eds.), *Climate Change 2021: The Physical Science Basis. Contribution of Working Group I to the Sixth Assessment Report of the Intergovernmental Panel on Climate Change* (pp. 423–552). Cambridge University Press. <https://doi.org/10.1017/9781009157896.001>

Acknowledgements

Agence Nationale de la Recherche-ANR project D-Critical, Benjamin Quesada and Niccola Clerici, Universidad del Rosario, Bogota, Colombia; Grloria Florez-Yepes, Universidad Católica de Manizalez, Colombia; Ezekiel Zamora-Ledesma, Universidad Técnica de Manabí, Ecuador

Contact

email: andres.gonzalez@universite-paris-saclay.fr