



HAL
open science

Completions, Perforations and Fillings

Gilles Bertrand

► **To cite this version:**

Gilles Bertrand. Completions, Perforations and Fillings. DGMM 2021: Discrete Geometry and Mathematical Morphology, May 2021, Uppsala, Sweden. pp.137-151, 10.1007/978-3-030-76657-3_9. hal-04492844

HAL Id: hal-04492844

<https://hal.science/hal-04492844>

Submitted on 7 Mar 2024

HAL is a multi-disciplinary open access archive for the deposit and dissemination of scientific research documents, whether they are published or not. The documents may come from teaching and research institutions in France or abroad, or from public or private research centers.

L'archive ouverte pluridisciplinaire **HAL**, est destinée au dépôt et à la diffusion de documents scientifiques de niveau recherche, publiés ou non, émanant des établissements d'enseignement et de recherche français ou étrangers, des laboratoires publics ou privés.

Completions, perforations and fillings

Gilles Bertrand

LIGM, Univ Gustave Eiffel, CNRS, ESIEE Paris, F-77454 Marne-la-Vallée, France

Abstract. We introduce new local operations, *perforations* and *fillings*, which transform couples of objects (X, Y) such that $X \subseteq Y$. We complement these two operations by collapses and anti-collapses of both X and Y . This set of operations may be seen as a generalization of transformations based solely on collapses, thus a generalization of simple homotopy. Though these transformations do not, in general, preserve homotopy, we make a link between perforations, fillings, and simple homotopy. We give a full characterization of the collection of couples of objects that is closed under the above set of operations. Also, we provide a full characterization of the collection of couples of objects that is closed under the single operation of collapse.

Keywords: Combinatorial topology, simple homotopy, contractability, collapse, completions.

1 Introduction

Simple homotopy, introduced by J. H. C. Whitehead in the early 1930's, may be seen as a refinement of the concept of homotopy [1]. Two complexes are simple homotopy equivalent if one of them may be obtained from the other by a sequence of elementary collapses and anti-collapses.

Simple homotopy plays a fundamental role in combinatorial topology [1–4]. Also, many notions relative to homotopy in the context of computer imagery rely on the collapse operation. In particular, this is the case for the notion of a simple point, which is crucial for all image transformations that preserve the topology of the objects [5–7], see also [8–10].

In this paper, we introduce new local operations, *perforations* and *fillings*, which transform couples of objects. Intuitively, a perforation of a couple (X, Y) , with $X \subseteq Y$, consists of removing a part of Y which is also a part of X , a filling is the operation that reverses the effect of a perforation. We complement these two operations by collapses and anti-collapses of both X and Y , with the constraint that we keep the inclusion relation between X and Y . This set of operations may be seen as a generalization of transformations based solely on collapses, thus a generalization of simple homotopy. We formalize these notions by means of completions, which are inductive properties expressed in a declarative way [11].

Our main results include the following:

- Though these transformations do not, in general, preserve homotopy, we make a link between perforations, fillings, and simple homotopy.

- In particular, we show there is an equivalence between the collection of couples of objects that is closed under the above local operations and the collection made of all contractible objects.
- We give a full characterization of this collection. This characterization is given by four global properties, which are a subset of the five completions that describe acyclic pairs of objects.
- We also provide a full characterization of the collection of couples of objects that is closed under the single operation of collapse.

The paper is organized as follows. First, we give some basic definitions for simplicial complexes (Sec. 2) and simple homotopy (Sec. 3). Then, we recall some facts relative to completions (Sec. 4). We also recall the definitions of the completions that describe acyclic objects (dendrites) and acyclic pairs (dyads) in Sec. 5. Then, we present homotopic pairs and give preliminary results on contractibility (Sec. 6). In Sec. 7, we introduce our perforation and filling operations and give properties relative to these transformations. In Sec. 8, we present some results on collapsible pairs. Note that the paper is self contained.

2 Basic definitions for simplicial complexes

Let X be a finite family composed of finite sets. The *simplicial closure* of X is the complex $X^- = \{y \subseteq x \mid x \in X\}$. The family X is a (*simplicial*) *complex* if $X = X^-$. We write \mathbb{S} for the collection of all simplicial complexes.

Observe that $\emptyset \in \mathbb{S}$ and $\{\emptyset\} \in \mathbb{S}$. The complex \emptyset is the *void complex*, and the complex $\{\emptyset\}$ is the *empty complex*.

Let $X \in \mathbb{S}$. An element of X is a *simplex* of X or a *face* of X . A *facet* of X is a simplex of X that is maximal for inclusion. For example, the family $X = \{\emptyset, \{a\}, \{b\}, \{a, b\}\}$ is a simplicial complex with four faces and one facet. Note that the empty set is necessarily a face of X whenever $X \neq \emptyset$.

A *simplicial subcomplex* of $X \in \mathbb{S}$ is any subset Y of X that is a simplicial complex. If Y is a subcomplex of X , we write $Y \preceq X$.

Let $X \in \mathbb{S}$. The *dimension* of $x \in X$, written $\dim(x)$, is the number of its elements minus one. The *dimension* of X , written $\dim(X)$, is the largest dimension of its simplices, the *dimension* of \emptyset , the void complex, being defined to be -1 . Observe that the dimension of the empty complex $\{\emptyset\}$ is also -1 .

A complex $A \in \mathbb{S}$ is a *cell* if $A = \emptyset$ or if A has precisely one non-empty facet x . We set $A^\circ = A \setminus \{x\}$ and $\emptyset^\circ = \emptyset$. We write \mathbb{C} for the collection of all cells. A cell $\alpha \in \mathbb{C}$ is a *vertex* if $\dim(\alpha) = 0$.

The *ground set* of $X \in \mathbb{S}$ is the set $\underline{X} = \cup\{x \in X \mid \dim(x) = 0\}$. Thus, if $A \in \mathbb{C}$, with $A \neq \emptyset$, then \underline{A} is precisely the unique facet of A . In particular, if α is a vertex, we have $\alpha = \{\emptyset, \underline{\alpha}\}$.

We say that $X \in \mathbb{S}$ and $Y \in \mathbb{S}$ are *disjoint*, or that X is *disjoint from* Y , if $\underline{X} \cap \underline{Y} = \emptyset$. Thus, X and Y are disjoint if and only if $X \cap Y = \emptyset$ or $X \cap Y = \{\emptyset\}$.

If $X \in \mathbb{S}$ and $Y \in \mathbb{S}$ are disjoint, the *join* of X and Y is the simplicial complex XY such that $XY = \{x \cup y \mid x \in X, y \in Y\}$. Thus $XY = \emptyset$ if $Y = \emptyset$, and $XY = X$ if $Y = \{\emptyset\}$. The join αX of a vertex α and a complex $X \in \mathbb{S}$ is a *cone*.

3 Collapse

Let us first recall some basic definitions related to the collapse operator [1].

Let $X \in \mathbb{S}$, and let x, y be two distinct faces of X . The couple (x, y) is a *free pair for X* if y is the only face of X that contains x . Thus, the face y is necessarily a facet of X . If (x, y) is a free pair for X , then $Y = X \setminus \{x, y\}$ is an *elementary collapse of X* , and X is an *elementary expansion of Y* . We say that X *collapses onto Y* , or that Y *expands onto X* , if there exists a sequence $\langle X_0, \dots, X_k \rangle$ such that $X_0 = X$, $X_k = Y$, and X_i is an elementary collapse of X_{i-1} , $i \in [1, k]$. The complex X is *collapsible* if X collapses onto \emptyset . We say that X is *(simply) homotopic to Y* , or that X and Y are *(simply) homotopic*, if there exists a sequence $\langle X_0, \dots, X_k \rangle$ such that $X_0 = X$, $X_k = Y$, and X_i is an elementary collapse or an elementary expansion of X_{i-1} , $i \in [1, k]$. The complex X is *(simply) contractible* if X is simply homotopic to \emptyset .

In the sequel, we will use the following facts.

1) Let $X, Y \in \mathbb{S}$, and let (x, y) be a free pair for Y . Thus $Y' = Y \setminus \{x, y\}$ is an elementary collapse of Y . If x and y are not in X , we observe that $X \cup Y'$ is an elementary collapse of $X \cup Y$. It follows that:

The complex Y collapses onto $X \cap Y$ if and only if $X \cup Y$ collapses onto X .

2) Let α be an arbitrary vertex. We have $\alpha = \{\emptyset, \underline{\alpha}\}$. The couple $(\emptyset, \underline{\alpha})$ is a free pair for α . Hence α collapses onto \emptyset , *i.e.*, the vertex α is collapsible.

3) Let $X \in \mathbb{S}$, $Y \preceq X$, and let α be a vertex disjoint from X . If $X = \{\emptyset\}$, we have $\alpha X = \alpha$, and either $Y = X$ or $Y = \emptyset$. Otherwise, let x be a facet of X that is not in Y . We observe that the couple $(x, \underline{\alpha} \cup x)$ is a free pair for the cone αX . Thus, the cone $\alpha X'$, with $X' = X \setminus \{x, \underline{\alpha} \cup x\}$, is an elementary collapse of the cone αX . By induction, we obtain:

If $Y \preceq X$, then αX collapses onto αY .

If $Y = \emptyset$, it means that αX collapses onto \emptyset . Thus:

Any cone is collapsible.

4) Let $X, Y \in \mathbb{S}$, with $X \preceq Y$, and let α be a vertex disjoint from Y . Let x and y be two faces of X . The couple (x, y) is a free pair for X if and only if $(\underline{\alpha} \cup x, \underline{\alpha} \cup y)$ is a free pair for $\alpha X \cup Y$. Thus, by induction, we have the following:

The complex X collapses onto Z if and only if $\alpha X \cup Y$ collapses onto $\alpha Z \cup Y$.

As a special case of this result, we obtain:

The complex X is collapsible if and only if $\alpha X \cup Y$ collapses onto Y .

5) Let $A \in \mathbb{C}$. If $A = \emptyset$, or if A is a vertex, then A is collapsible. Otherwise, there exists a vertex α and a cell B such that $A = \alpha B$, which is a cone. Thus, any cell is collapsible. Using the result 4), we see that the cell $A = \alpha B$ collapses onto the cell B . By induction, we obtain the following result:

If $A, B \in \mathbb{C}$, and if $B \preceq A$, then A collapses onto B .

6) Let $X, Y \in \mathbb{S}$, with $X \neq \emptyset$. We observe that X is an elementary collapse of Y if and only if there exists a cell D , $D \neq \emptyset$, such that $Y = X \cup \alpha D$ and $X \cap \alpha D = \alpha D^\circ$, where α is a vertex disjoint from D .

Now, we recall the definition of the dual of a complex, and we give two related propositions which will be used for collapsibility.

Let $A \in \mathbb{C}$ and $X \preceq A$. The *dual of X for A* is the simplicial complex, written X_A^* , such that $X_A^* = \{x \in A \mid (\underline{A} \setminus x) \notin X\}$.

We have $\emptyset_A^* = A$ and $\{\emptyset\}_A^* = A^\circ$, and, for any $A \in \mathbb{C}$, we have the following:

- If $X \preceq A$, then $(X_A^*)_A^* = X$.

- If $X \preceq A, Y \preceq A$, then $(X \cup Y)_A^* = X_A^* \cap Y_A^*$ and $(X \cap Y)_A^* = X_A^* \cup Y_A^*$.

Proposition 1 ([4], [11]). *Let $A \in \mathbb{C}$. Let $X, Y \in \mathbb{S}$, with $X \preceq Y \preceq A$. The complex Y collapses onto X if and only if X_A^* collapses onto Y_A^* .*

Proposition 2 ([12]). *Let $A \in \mathbb{C}$. Let $X, Y \in \mathbb{S}$, with $X \preceq Y \preceq A$, and let α be a vertex disjoint from A . Then we have $(\alpha X \cup Y)_{\alpha A}^* = \alpha Y_A^* \cup X_A^*$.*

4 Completions

We give some basic definitions for completions. A completion may be seen as a rewriting rule that permits to derive collections of sets. See [11] for more details.

Let \mathbf{S} be a given collection and let \mathcal{K} be an arbitrary subcollection of \mathbf{S} . Thus, we have $\mathcal{K} \subseteq \mathbf{S}$. In the sequel of the paper, the symbol \mathcal{K} , with possible superscripts, will be a dedicated symbol (a kind of variable).

Let \mathbf{k} be a binary relation on $2^{\mathbf{S}}$, thus $\mathbf{k} \subseteq 2^{\mathbf{S}} \times 2^{\mathbf{S}}$. We say that \mathbf{k} is *finitary*, if \mathbf{F} is finite whenever $(\mathbf{F}, \mathbf{G}) \in \mathbf{k}$.

Let $\langle \mathbf{K} \rangle$ be a property that depends on \mathcal{K} . We say that $\langle \mathbf{K} \rangle$ is a *completion* (on \mathbf{S}) if $\langle \mathbf{K} \rangle$ may be expressed as the following property:

\rightarrow If $\mathbf{F} \subseteq \mathcal{K}$, then $\mathbf{G} \subseteq \mathcal{K}$ whenever $(\mathbf{F}, \mathbf{G}) \in \mathbf{k}$. $\langle \mathbf{k} \rangle$

where \mathbf{k} is a finitary binary relation on $2^{\mathbf{S}}$.

If $\langle \mathbf{K} \rangle$ is a property that depends on \mathcal{K} , we say that a given collection $\mathbf{X} \subseteq \mathbf{S}$ satisfies $\langle \mathbf{K} \rangle$ if the property $\langle \mathbf{K} \rangle$ is true for $\mathcal{K} = \mathbf{X}$.

Theorem 1. [11] *Let $\langle \mathbf{K} \rangle$ be a completion on \mathbf{S} and let $\mathbf{X} \subseteq \mathbf{S}$. There exists, under the subset ordering, a unique minimal collection that contains \mathbf{X} and that satisfies $\langle \mathbf{K} \rangle$.*

If $\langle \mathbf{K} \rangle$ is a completion on \mathbf{S} and if $\mathbf{X} \subseteq \mathbf{S}$, we write $\langle \mathbf{X}; \mathbf{K} \rangle$ for the unique minimal collection that contains \mathbf{X} and that satisfies $\langle \mathbf{K} \rangle$.

Let $\langle \mathbf{K} \rangle$ be a completion expressed as the above property $\langle \mathbf{k} \rangle$. By a fixed point property, the collection $\langle \mathbf{X}; \mathbf{K} \rangle$ may be obtained by starting from $\mathcal{K} = \mathbf{X}$, and by iteratively adding to \mathcal{K} all the sets \mathbf{G} such that $(\mathbf{F}, \mathbf{G}) \in \mathbf{k}$ and $\mathbf{F} \subseteq \mathcal{K}$ (see [11]). Thus, if $\mathbf{C} = \langle \mathbf{X}; \mathbf{K} \rangle$, then $\langle \mathbf{X}; \mathbf{K} \rangle$ may be seen as a dynamic structure that describes \mathbf{C} ; the completion $\langle \mathbf{K} \rangle$ acts as a generator, which, from \mathbf{X} , makes it possible to enumerate all elements in \mathbf{C} . We will see now that $\langle \mathbf{K} \rangle$ may in fact be composed of several completions.

Let $\langle \mathbf{K}_1 \rangle, \langle \mathbf{K}_2 \rangle, \dots, \langle \mathbf{K}_k \rangle$ be completions on \mathbf{S} . We write \wedge for the logical “and”. It may be seen that $\langle \mathbf{K} \rangle = \langle \mathbf{K}_1 \rangle \wedge \langle \mathbf{K}_2 \rangle \dots \wedge \langle \mathbf{K}_k \rangle$ is a completion. In the sequel, we write $\langle \mathbf{K}_1, \mathbf{K}_2, \dots, \mathbf{K}_k \rangle$ for $\langle \mathbf{K} \rangle$. Thus, if $\mathbf{X} \subseteq \mathbf{S}$, the notation $\langle \mathbf{X}; \mathbf{K}_1, \mathbf{K}_2, \dots, \mathbf{K}_k \rangle$ stands for the smallest collection that contains \mathbf{X} and that satisfies each of the properties $\langle \mathbf{K}_1 \rangle, \langle \mathbf{K}_2 \rangle, \dots, \langle \mathbf{K}_k \rangle$.

Let $\langle \mathbf{K} \rangle, \langle \mathbf{Q} \rangle$ be two completions on \mathbf{S} . We say that $\langle \mathbf{K} \rangle$ and $\langle \mathbf{Q} \rangle$ are *equivalent* if, for any $\mathbf{X} \subseteq \mathbf{S}$, the collection \mathbf{X} satisfies $\langle \mathbf{K} \rangle$ if and only if \mathbf{X} satisfies $\langle \mathbf{Q} \rangle$.

5 Dyads and dendrites

The notion of a dendrite was introduced in [11] as a way for defining a collection made of acyclic complexes. Let us consider the collection $\mathbf{S} = \mathbb{S}$, and let \mathcal{K} denote an arbitrary collection of simplicial complexes.

We define the two completions $\langle D1 \rangle$ and $\langle D2 \rangle$ on \mathbb{S} : For any $S, T \in \mathbb{S}$,

\rightarrow If $S, T \in \mathcal{K}$, then $S \cup T \in \mathcal{K}$ whenever $S \cap T \in \mathcal{K}$. $\langle D1 \rangle$

\rightarrow If $S, T \in \mathcal{K}$, then $S \cap T \in \mathcal{K}$ whenever $S \cup T \in \mathcal{K}$. $\langle D2 \rangle$

Let $\mathbb{D} = \langle \mathbb{C}; D1, D2 \rangle$. Each element of \mathbb{D} is a *dendrite* or an *acyclic complex*.

The collection \mathbb{T} of all trees (*i.e.*, all connected acyclic graphs) provides an example of a collection of dendrites. It may be checked that \mathbb{T} satisfies both $\langle D1 \rangle$ and $\langle D2 \rangle$, and that we have $\mathbb{T} \subseteq \mathbb{D}$. In fact, we have the general result [11]:

A complex is a dendrite if and only if it is acyclic in the sense of homology.

As a consequence, any contractible complex is a dendrite but there exist some dendrites that are not contractible. The punctured Poincaré homology sphere provides such a counter-example.

In the following, we will say that a dendrite is *twisted* if it is not contractible.

Intuitively, a dyad is a couple of complexes (X, Y) , with $X \preceq Y$, such that the cycles of X are “at the right place with respect to the ones of Y ”. We set $\tilde{\mathbb{S}} = \{(X, Y) \mid X, Y \in \mathbb{S}, X \preceq Y\}$, the notation $\tilde{\mathcal{K}}$ stands for an arbitrary subcollection of $\tilde{\mathbb{S}}$.

We define five completions on $\tilde{\mathbb{S}}$ (the symbols $\tilde{\mathbb{T}}, \tilde{\mathbb{U}}, \tilde{\mathbb{L}}$ stand respectively for “transitivity”, “upper confluence”, and “lower confluence”):

For any $S, T \in \mathbb{S}$,

\rightarrow If $(S \cap T, T) \in \tilde{\mathcal{K}}$, then $(S, S \cup T) \in \tilde{\mathcal{K}}$. $\langle \tilde{\mathbb{X}} \rangle$

\rightarrow If $(S, S \cup T) \in \tilde{\mathcal{K}}$, then $(S \cap T, T) \in \tilde{\mathcal{K}}$. $\langle \tilde{\mathbb{Y}} \rangle$

For any $(R, S), (S, T), (R, T) \in \tilde{\mathbb{S}}$,

\rightarrow If $(R, S) \in \tilde{\mathcal{K}}$ and $(S, T) \in \tilde{\mathcal{K}}$, then $(R, T) \in \tilde{\mathcal{K}}$. $\langle \tilde{\mathbb{T}} \rangle$

\rightarrow If $(R, S) \in \tilde{\mathcal{K}}$ and $(R, T) \in \tilde{\mathcal{K}}$, then $(S, T) \in \tilde{\mathcal{K}}$. $\langle \tilde{\mathbb{U}} \rangle$

\rightarrow If $(R, T) \in \tilde{\mathcal{K}}$ and $(S, T) \in \tilde{\mathcal{K}}$, then $(R, S) \in \tilde{\mathcal{K}}$. $\langle \tilde{\mathbb{L}} \rangle$

We set $\tilde{\mathbb{C}} = \{(A, B) \in \tilde{\mathbb{S}} \mid A, B \in \mathbb{C}\}$ and $\tilde{\mathbb{X}} = \langle \tilde{\mathbb{C}}; \tilde{\mathbb{X}}, \tilde{\mathbb{Y}}, \tilde{\mathbb{T}}, \tilde{\mathbb{U}}, \tilde{\mathbb{L}} \rangle$. Each couple of $\tilde{\mathbb{X}}$ is a *dyad* or an *acyclic pair*.

In [12], the following fundamental relation between dyads and dendrites was given. Intuitively, Th. 2 indicates that (X, Y) is a dyad if and only if we cancel out all cycles of Y (*i.e.*, we obtain an acyclic complex), whenever we cancel out those of X (by the way of a cone). See Fig. 1, which also gives an illustration of the completion $\langle \tilde{\mathbb{X}} \rangle$.

Theorem 2. *Let $(X, Y) \in \tilde{\mathbb{S}}$ and let α be a vertex disjoint from Y . The couple (X, Y) is a dyad if and only if $\alpha X \cup Y$ is a dendrite.*

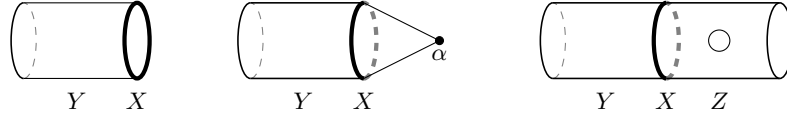


Fig. 1. Left: A circle X in a cylindrical surface Y , the couple (X, Y) is a dyad. Middle: The complex $\alpha X \cup Y$ is a dendrite. Thus, $\alpha X \cup Y$ is acyclic. Right, illustration of the completion $\langle \tilde{X} \rangle$: If a complex Z is such that $Z \cap Y = X$, then $(Z, Z \cup Y)$ is a dyad. Here Z is a punctured cylindrical surface. Again, the complex $\alpha Z \cup (Z \cup Y)$ is acyclic.

In particular, setting $X = \emptyset$ in the above theorem, we see that a complex $D \in \mathbb{S}$ is a dendrite if and only if (\emptyset, D) is a dyad. Therefore, we have the following corollary of Th. 2.

Corollary 1. *Let $(X, Y) \in \ddot{\mathbb{S}}$ and let α be a vertex disjoint from Y . The couple (X, Y) is a dyad if and only if $(\emptyset, \alpha X \cup Y)$ is a dyad.*

If $(X, Y) \in \ddot{\mathbb{S}}$ and α is a vertex disjoint from Y , we say that $\alpha X \cup Y$ is the Δ -form of (X, Y) (with vertex α). Such forms play a decisive role in our framework. We see that Th. 2 may be formulated in this way: *A couple $(X, Y) \in \ddot{\mathbb{S}}$ is a dyad if and only if its Δ -form is a dendrite.*

6 Homotopy and contractibility

We now recall the completions introduced in [13] for simple homotopy. If $(I, O) \in \ddot{\mathbb{S}}$, the basic idea is to continuously deform both the inner complex I and the outer complex O , these deformations keeping I inside O .

If $X, Y \in \mathbb{S}$, we write $X \xrightarrow{E} Y$, whenever Y is an elementary expansion of X . We define four completions on $\ddot{\mathbb{S}}$: For any $(R, S), (R, T), (S, T)$ in $\ddot{\mathbb{S}}$,

- \rightarrow If $(R, S) \in \ddot{\mathcal{K}}$ and $S \xrightarrow{E} T$, then $(R, T) \in \ddot{\mathcal{K}}$. $\langle \text{O}^+ \rangle$
- \rightarrow If $(R, T) \in \ddot{\mathcal{K}}$ and $S \xrightarrow{E} T$, then $(R, S) \in \ddot{\mathcal{K}}$. $\langle \text{O}^- \rangle$
- \rightarrow If $(R, T) \in \ddot{\mathcal{K}}$ and $R \xrightarrow{E} S$, then $(S, T) \in \ddot{\mathcal{K}}$. $\langle \text{I}^+ \rangle$
- \rightarrow If $(S, T) \in \ddot{\mathcal{K}}$ and $R \xrightarrow{E} S$, then $(R, T) \in \ddot{\mathcal{K}}$. $\langle \text{I}^- \rangle$

We set $\ddot{\mathbb{I}} = \{(X, X) \mid X \in \mathbb{S}\}$ and $\ddot{\mathbb{H}} = \langle \ddot{\mathbb{I}}; \text{O}^+, \text{O}^-, \text{I}^+, \text{I}^- \rangle$.

Each element of $\ddot{\mathbb{H}}$ is a *homotopic pair*.

Observe that X is homotopic to Y whenever $(X, Y) \in \ddot{\mathbb{H}}$. The following is a variant of a result given in [13] which gives a basic characterization of the collection $\ddot{\mathbb{H}}$.

Theorem 3. *Let $(X, Y) \in \ddot{\mathbb{S}}$. We have $(X, Y) \in \ddot{\mathbb{H}}$ if and only if there exists a complex Z such that Z collapses onto X and Z collapses onto Y .*

The following theorem is the important global result given in [13]. It shows that four of the five completions that describe dyads allow for a characterization

of the collection made of all homotopic pairs. Thus, in this framework, we have a unified presentation of both acyclicity and homotopy.

Theorem 4. *We have $\ddot{\mathbb{H}} = \langle \ddot{\mathbb{C}}; \widetilde{\mathbb{X}}, \widetilde{\mathbb{T}}, \widetilde{\mathbb{U}}, \widetilde{\mathbb{L}} \rangle$.*

We now present some facts relative to contractibility. This special case of homotopy will play a crucial role in the sequel of this paper. The following is a direct consequence of the definition of contractibility and that of the collection $\ddot{\mathbb{H}}$.

Proposition 3. *A complex $X \in \mathbb{S}$ is contractible if and only if $(\emptyset, X) \in \ddot{\mathbb{H}}$.*

The next proposition is a basic fact which will be useful in the sequel. It indicates that, if a subcomplex X of Y is contractible, then we can add or remove a cone on X without changing the homotopy of Y . Observe that it is not easy to prove this fact by using direct arguments, since the steps involved in the contractibility of X may “extend X outside Y ”. With the global properties given by Th. 4, only few lines are needed for establishing this result. See [17], Prop. 0.17, for a counterpart of this property in the framework of general homotopy.

Proposition 4. *Let $(X, Y) \in \ddot{\mathbb{S}}$ and let α be a vertex disjoint from Y . Suppose the complex X is contractible, i.e., we have $(\emptyset, X) \in \ddot{\mathbb{H}}$. Then we have $(Y, \alpha X \cup Y) \in \ddot{\mathbb{H}}$. In particular, we have $(\emptyset, Y) \in \ddot{\mathbb{H}}$ if and only if $(\emptyset, \alpha X \cup Y) \in \ddot{\mathbb{H}}$.*

Proof. Since any cone is collapsible, we have $(\emptyset, \alpha X) \in \ddot{\mathbb{H}}$. By Th. 4, the collection $\ddot{\mathbb{H}}$ satisfies $\langle \widetilde{\mathbb{U}} \rangle$. Thus $(X, \alpha X) \in \ddot{\mathbb{H}}$. We may write $(Y \cap \alpha X, \alpha X) \in \ddot{\mathbb{H}}$. By $\langle \widetilde{\mathbb{X}} \rangle$, we obtain $(Y, \alpha X \cup Y) \in \ddot{\mathbb{H}}$. Since $\ddot{\mathbb{H}}$ satisfies also $\langle \widetilde{\mathbb{T}} \rangle$ and $\langle \widetilde{\mathbb{L}} \rangle$, we see that $(\emptyset, Y) \in \ddot{\mathbb{H}}$ if and only if $(\emptyset, \alpha X \cup Y) \in \ddot{\mathbb{H}}$. \square

Proposition 5. *Let $(X, Y) \in \ddot{\mathbb{S}}$ and let α be a vertex disjoint from Y . If $(X, Y) \in \ddot{\mathbb{H}}$, then $\alpha X \cup Y$ is contractible, i.e., we have $(\emptyset, \alpha X \cup Y) \in \ddot{\mathbb{H}}$.*

Proof. Let $(X, Y) \in \ddot{\mathbb{H}}$. We have $\alpha X \cap Y = X$, thus $(\alpha X \cap Y, Y) \in \ddot{\mathbb{H}}$. By $\langle \widetilde{\mathbb{X}} \rangle$, we obtain $(\alpha X, \alpha X \cup Y) \in \ddot{\mathbb{H}}$. Since any cone is collapsible, we have $(\emptyset, \alpha X) \in \ddot{\mathbb{H}}$. The result follows from $\langle \widetilde{\mathbb{T}} \rangle$. \square

The converse of Prop. 5 is not true. Let X be a twisted dendrite, i.e., a non contractible dendrite. If A is a cell, with $X \preceq A$, then X is not homotopic to A , but $\alpha X \cup A$ is contractible. This fact is well known in algebraic topology [17].

Let $\ddot{\mathbb{K}}$ be a collection of couples such that (\emptyset, \emptyset) is in $\ddot{\mathbb{K}}$. We define the *kernel* of $\ddot{\mathbb{K}}$ as the collection of all complexes $X \in \mathbb{S}$ such that (\emptyset, X) is in $\ddot{\mathbb{K}}$. Let us consider the two following properties, where α is a vertex disjoint from Y :
 If $(X, Y) \in \ddot{\mathbb{K}}$, then the Δ -form $\alpha X \cup Y$ is in the kernel of $\ddot{\mathbb{K}}$. (K1)
 If $(X, Y) \in \ddot{\mathbb{S}}$ and the Δ -form $\alpha X \cup Y$ is in the kernel of $\ddot{\mathbb{K}}$, then $(X, Y) \in \ddot{\mathbb{K}}$. (K2)

By Cor. 1, the collection $\ddot{\mathbb{X}}$ of dyads satisfies both (K1) and (K2). In particular, it means that $\ddot{\mathbb{X}}$ may be recovered from its kernel. By Prop. 5 and the above remark, the collection of all homotopic pairs $\ddot{\mathbb{H}}$ satisfies (K1) but not (K2).

In the next section, we will investigate the collection $\ddot{\mathbb{W}}$ of all pairs (X, Y) such that the Δ -form $\alpha X \cup Y$ is contractible. Thus, $\ddot{\mathbb{W}}$ will satisfy both (K1) and (K2) and, by the preceding remark, $\ddot{\mathbb{W}}$ will strictly contain the collection $\ddot{\mathbb{H}}$. Furthermore, we will see that $\ddot{\mathbb{W}}$ has a remarkable global characterization.

7 Filling and perforation

Let $(X, Y) \in \ddot{\mathbb{S}}$ and $(X', Y') \in \ddot{\mathbb{S}}$. We say that (X, Y) is an *elementary perforation* of (X', Y') , if there exists a face f of both X' and Y' such that $X = X' \setminus \{f\}$ and $Y = Y' \setminus \{f\}$. Thus f is necessarily a facet of both X' and Y' .

We say that (X', Y') is an *elementary filling* of (X, Y) , if (X, Y) is an elementary perforation of (X', Y') .

Let $(X, Y) \in \ddot{\mathbb{S}}$. We write $(X, Y) \xrightarrow{F} (X', Y')$ if (X', Y') is an elementary filling of (X, Y) . We define two completions on $\ddot{\mathbb{S}}$: For any $(S, T), (S', T')$ in $\ddot{\mathbb{S}}$,

\rightarrow If $(S, T) \in \ddot{\mathcal{K}}$ and $(S, T) \xrightarrow{F} (S', T')$, then $(S', T') \in \ddot{\mathcal{K}}$. ⟨F⟩

\rightarrow If $(S, T) \in \ddot{\mathcal{K}}$ and $(S', T') \xrightarrow{F} (S, T)$, then $(S', T') \in \ddot{\mathcal{K}}$. ⟨P⟩

We set $\ddot{\emptyset} = \{(\emptyset, \emptyset)\}$ and $\ddot{\mathbb{W}} = \langle \ddot{\emptyset}; O^+, O^-, I^+, I^-, F, P \rangle$.

Each couple of $\ddot{\mathbb{W}}$ is a *contractible pair*.

We first observe that any couple $(X, X) \in \ddot{\mathbb{I}}$ may be obtained from (\emptyset, \emptyset) by iteratively applying the completion ⟨F⟩. In fact we see that $\ddot{\mathbb{I}} = \langle \ddot{\emptyset}; F \rangle$.

Thus, we have $\ddot{\mathbb{W}} = \langle \ddot{\mathbb{I}}; O^+, O^-, I^+, I^-, F, P \rangle$.

See Fig. 2 which provides an illustration of four contractible pairs.

We have $\ddot{\mathbb{H}} = \langle \ddot{\mathbb{I}}; O^+, O^-, I^+, I^- \rangle$. Therefore, we immediately note that $\ddot{\mathbb{H}} \subseteq \ddot{\mathbb{W}}$ since the two additional completions ⟨F⟩ and ⟨P⟩ allow to generate more couples in $\ddot{\mathbb{W}}$. Also, we observe that, if we apply the completions ⟨F⟩ or ⟨P⟩ on a couple $(X, Y) \in \ddot{\mathbb{S}}$, then the homotopy of both X and Y is changed. Nevertheless, we will see that all couples $(X, Y) \in \ddot{\mathbb{W}}$ satisfy an homotopy condition.

It can be checked that each transformation of a couple $(X, Y) \in \ddot{\mathbb{S}}$, that is made according to the six completions which constitute the definition of $\ddot{\mathbb{W}}$, may be seen as a collapse or an expansion of a complex of the form $\alpha X \cup Y$.

Proposition 6. *Let $(X, Y) \in \ddot{\mathbb{S}}$, let $X' \preceq X$, $Y' \preceq Y$, and let α be a vertex disjoint from Y . The complex $\alpha X' \cup Y'$ is an elementary collapse of $\alpha X \cup Y$ if and only if the couples (X', Y') and (X, Y) are such that :*

- we have $Y' = Y$ and the complex X' is an elementary collapse of X , or
- we have $X' = X$ and the complex Y' is an elementary collapse of Y , or
- the couple (X', Y') is an elementary perforation of (X, Y) .

As a consequence, we have the following result which makes the connection between the collection $\ddot{\mathbb{W}}$ and contractible complexes.

Proposition 7. *Let $(X, Y) \in \ddot{\mathbb{S}}$ and let α be a vertex disjoint from Y .*

We have $(X, Y) \in \ddot{\mathbb{W}}$ if and only if $\alpha X \cup Y$ is contractible, i.e., if and only if $(\emptyset, \alpha X \cup Y) \in \ddot{\mathbb{H}}$.

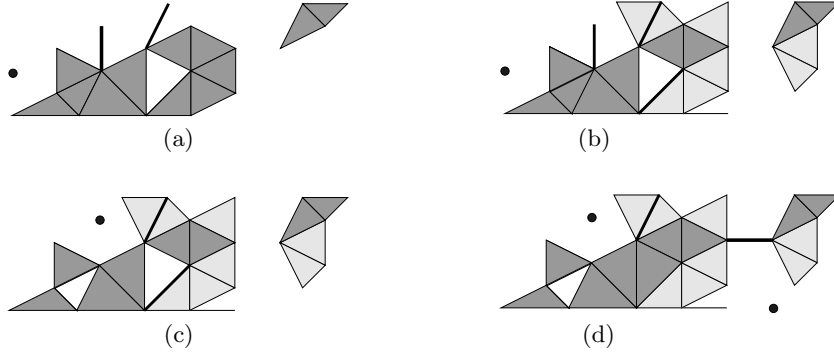


Fig. 2. Four contractible pairs. For each pair (X, Y) , the subcomplex X of Y is highlighted by its facets (triangles, segments, or vertices). (a) A pair $(X_0, Y_0) \in \ddot{\mathbb{I}}$, thus $X_0 = Y_0$. (b) A pair (X_1, Y_1) : the complex Y_1 is obtained from Y_0 with a sequence of expansions, and X_1 is obtained from X_0 with a sequence of collapses. (c) A pair (X_2, Y_2) obtained from (X_1, Y_1) with three perforations. (d) A pair (X_3, Y_3) obtained from (X_2, Y_2) with three fillings.

By Th. 3, we have $(\emptyset, \alpha X \cup Y) \in \ddot{\mathbb{H}}$ if and only if there exists a complex Z such that Z collapses onto \emptyset , and Z collapses onto $\alpha X \cup Y$. Thus, the complex Z is collapsible. It follows that Prop. 7 and Th. 3 permits to establish a link between the collection $\ddot{\mathbb{W}}$ and collapsibility. The following proposition will allow us to refine this result.

Proposition 8. *Let $X \in \mathbb{S}$, $A \in \mathbb{C}$, with $X \preceq A$, and let α be a vertex disjoint from A . If X collapses onto \emptyset , then αA collapses onto X .*

Proof. Suppose X collapses onto \emptyset , and let $A \in \mathbb{C}$ with $X \preceq A$. By Prop. 1, since $\emptyset_A^* = A$, the complex A collapses onto X_A^* . Let α be a vertex disjoint from A , and let $Z = \alpha X_A^* \cup A$. Since A collapses onto X_A^* , the complex Z collapses onto αX_A^* . Thus Z collapses onto \emptyset . By Prop. 2, we have $Z_{\alpha A}^* = \alpha A_A^* \cup (X_A^*)_A^*$. We obtain $Z_{\alpha A}^* = X$. By Prop. 1, we deduce that αA collapses onto X . \square

By Prop. 7, Th. 3, and Prop. 8, we deduce that $(X, Y) \in \ddot{\mathbb{W}}$ if and only if there exists a cell $B \in \mathbb{C}$ such that B collapses onto $\alpha X \cup Y$. Clearly, we can assume that B is of the form αC , with $C \in \mathbb{C}$.

Proposition 9. *Let $(X, Y) \in \ddot{\mathbb{S}}$ and let α be a vertex disjoint from Y . We have $(X, Y) \in \ddot{\mathbb{W}}$ if and only if there exists a cell $C \in \mathbb{C}$, which is disjoint from α , such that the cell αC collapses onto $\alpha X \cup Y$.*

Under the conditions of Prop. 9, we may write $\alpha C = \alpha C \cup C$. Hence, we have $(X, Y) \in \ddot{\mathbb{W}}$ if and only if there exists a cell $C \in \mathbb{C}$ such that (X, Y) may be obtained from (C, C) by using the three transformations given in Prop. 6. Since $(C, C) \in \ddot{\mathbb{I}}$, we obtain the following result.

Proposition 10. *We have $\ddot{\mathbb{W}} = \langle \ddot{\mathbb{I}}; O^-, I^-, P \rangle$.*

A direct consequence of Th. 3 is that we have $\ddot{\mathbb{H}} = \langle \ddot{\mathbb{I}}; \mathbb{O}^-, \mathbb{I}^- \rangle$ (see Prop. 7 of [13]). Thus, the previous result may be seen as a counterpart of this characterization of homotopic pairs. We now point out the following equivalence.

Proposition 11. *The two completions $\langle \mathbb{F} \rangle$ and $\langle \tilde{\mathbb{X}} \rangle$ are equivalent and the two completions $\langle \mathbb{P} \rangle$ and $\langle \tilde{\mathbb{Y}} \rangle$ are equivalent.*

Proof. Let $\ddot{\mathbb{K}}$ be an arbitrary subcollection of $\ddot{\mathbb{S}}$.

i) Suppose $\ddot{\mathbb{K}}$ satisfies property $\langle \mathbb{P} \rangle$ and let $(S, S \cup T) \in \ddot{\mathbb{K}}$. Let x be a facet of S , with $x \notin T$. If no such a facet exists, we are done. Otherwise, the face x is also a facet of $S \cup T$. Thus the couple $(S \setminus \{x\}, (S \setminus \{x\}) \cup T)$ is an elementary perforation of $(S, S \cup T)$. By induction on the number of such facets, $\ddot{\mathbb{K}}$ satisfies $\langle \tilde{\mathbb{Y}} \rangle$.
ii) Suppose $\ddot{\mathbb{K}}$ satisfies property $\langle \tilde{\mathbb{Y}} \rangle$. Let $(S, T) \in \ddot{\mathbb{K}}$ and let (S', T') be an elementary perforation of (S, T) . We have $(S, T) = (S, S \cup T')$, thus by $\langle \tilde{\mathbb{Y}} \rangle$, we have $(S \cap T', T') = (S', T') \in \ddot{\mathbb{K}}$. We deduce that $\ddot{\mathbb{K}}$ satisfies $\langle \mathbb{P} \rangle$.

It follows that $\langle \mathbb{P} \rangle$ and $\langle \tilde{\mathbb{Y}} \rangle$ are equivalent. By reversing the above operations, we get the equivalence between $\langle \mathbb{F} \rangle$ and $\langle \tilde{\mathbb{X}} \rangle$. \square

Since the collection $\ddot{\mathbb{H}}$ satisfies the property $\langle \tilde{\mathbb{X}} \rangle$, a consequence of the above equivalence is that we can add another local transformation to the four completions which define homotopic pairs.

Corollary 2. *We have $\ddot{\mathbb{H}} = \langle \ddot{\mathbb{I}}; \mathbb{O}^+, \mathbb{O}^-, \mathbb{I}^+, \mathbb{I}^-, \mathbb{F} \rangle$.*

The following is one of the main results of this paper. It shows that the collection of contractible pairs is uniquely identified by four global properties.

Theorem 5. *We have $\ddot{\mathbb{W}} = \langle \ddot{\mathbb{C}}; \tilde{\mathbb{X}}, \tilde{\mathbb{Y}}, \tilde{\mathbb{T}}, \tilde{\mathbb{U}} \rangle$.*

Proof. We set $\ddot{\mathbb{W}}' = \langle \ddot{\mathbb{C}}; \tilde{\mathbb{X}}, \tilde{\mathbb{Y}}, \tilde{\mathbb{T}}, \tilde{\mathbb{U}} \rangle$.

1) In this part, we show that we have $\ddot{\mathbb{W}} \subseteq \ddot{\mathbb{W}}'$.

For that purpose we first establish the following result (R).

Let $X, Y \in \mathbb{S}$. If $(\emptyset, Y) \in \ddot{\mathbb{W}}'$ and if Y collapses onto X , then $(\emptyset, X) \in \ddot{\mathbb{W}}'$. (R)
Suppose $(\emptyset, Y) \in \ddot{\mathbb{W}}'$ and X is an elementary collapse of Y . If $X = \emptyset$, we are done. Otherwise, there exists a cell D , $D \neq \emptyset$, such that $Y = X \cup \alpha D$ and $X \cap \alpha D = \alpha D^\circ$, where α is a vertex disjoint from D . The complex αD being a cone, we have $(\emptyset, \alpha D) \in \ddot{\mathbb{W}}'$ (see Lem. 1 in [13]). By $\langle \tilde{\mathbb{U}} \rangle$, we get $(\alpha D, Y) = (\alpha D, X \cup \alpha D) \in \ddot{\mathbb{W}}'$. By $\langle \tilde{\mathbb{Y}} \rangle$, we derive $(\alpha D^\circ, X) \in \ddot{\mathbb{W}}'$. Since αD° is a cone, we have $(\emptyset, \alpha D^\circ) \in \ddot{\mathbb{W}}'$, and we obtain $(\emptyset, X) \in \ddot{\mathbb{W}}'$ (by $\langle \tilde{\mathbb{T}} \rangle$). By induction, we derive the result (R).

Now, let $(X, Y) \in \ddot{\mathbb{S}}$ and let α be a vertex disjoint from Y . Suppose $(X, Y) \in \ddot{\mathbb{W}}$. Then, there exists a cell $\alpha C \in \mathbb{C}$ such that αC collapses onto $\alpha X \cup Y$ (Prop. 9). We have $(\emptyset, \alpha C) \in \ddot{\mathbb{W}}'$. By (R) we obtain $(\emptyset, \alpha X \cup Y) \in \ddot{\mathbb{W}}'$. We also have $(\emptyset, \alpha X) \in \ddot{\mathbb{W}}'$. Hence, by $\langle \tilde{\mathbb{U}} \rangle$, we have $(\alpha X, \alpha X \cup Y) \in \ddot{\mathbb{W}}'$. By $\langle \tilde{\mathbb{Y}} \rangle$, we deduce $(\alpha X \cap Y, Y) \in \ddot{\mathbb{W}}'$. Therefore $(X, Y) \in \ddot{\mathbb{W}}'$. Thus, we proved that $\ddot{\mathbb{W}} \subseteq \ddot{\mathbb{W}}'$.

2) By Prop. 11, $\ddot{\mathbb{W}}$ satisfies $\langle \tilde{\mathbb{X}} \rangle$ and $\langle \tilde{\mathbb{Y}} \rangle$. We also have $\ddot{\mathbb{C}} \subseteq \ddot{\mathbb{W}}$. So, we only have

to show that \ddot{W} satisfies $\langle \tilde{U} \rangle$ and $\langle \tilde{T} \rangle$ in order to prove the inclusion $\ddot{W}' \subseteq \ddot{W}$. Let $(R, S), (S, T), (R, T) \in \ddot{S}$. Suppose $(R, S) \in \ddot{W}$, and let α, β be two distinct vertices disjoint from T . Let us consider the complex $U = \beta(\alpha R \cup S) \cup (\alpha R \cup T)$. By Prop. 7, we have $(\emptyset, \alpha R \cup S) \in \ddot{H}$. Hence, by Prop. 4, we have $(\alpha R \cup T, U) \in \ddot{H}$. But we can write $U = \alpha(\beta R) \cup (\beta S \cup T)$. Since $(\emptyset, \beta R) \in \ddot{H}$, again by Prop. 4, we have $(\beta S \cup T, U) \in \ddot{H}$.

i) Suppose $(S, T) \in \ddot{W}$. We have $(\emptyset, \beta S \cup T) \in \ddot{H}$ (Prop. 7) and $(\beta S \cup T, U) \in \ddot{H}$. Thus $(\emptyset, U) \in \ddot{H}$ (since \ddot{H} satisfies $\langle \tilde{T} \rangle$). We have $(\alpha R \cup T, U) \in \ddot{H}$ and $(\emptyset, U) \in \ddot{H}$. Thus $(\emptyset, \alpha R \cup T) \in \ddot{H}$ (since \ddot{H} satisfies $\langle \tilde{L} \rangle$). We obtain $(R, T) \in \ddot{W}$ (Prop. 7). It follows that the collection \ddot{W} satisfies $\langle \tilde{T} \rangle$.

ii) Suppose $(R, T) \in \ddot{W}$. We have $(\emptyset, \alpha R \cup T) \in \ddot{H}$ (Prop. 7) and $(\alpha R \cup T, U) \in \ddot{H}$. Thus $(\emptyset, U) \in \ddot{H}$ (since \ddot{H} satisfies $\langle \tilde{T} \rangle$). We have $(\beta S \cup T, U) \in \ddot{H}$ and $(\emptyset, U) \in \ddot{H}$. Thus $(\emptyset, \beta S \cup T) \in \ddot{H}$ (since \ddot{H} satisfies $\langle \tilde{L} \rangle$). We obtain $(S, T) \in \ddot{W}$ (Prop. 7). Consequently, the collection \ddot{W} satisfies $\langle \tilde{U} \rangle$. \square

Therefore, the completion $\langle \tilde{L} \rangle$ is the unique property that makes the distinction between the collections \ddot{W} and \ddot{X} . Observe also the differences between \ddot{W} and \ddot{H} : the collection \ddot{W} satisfies $\langle \tilde{Y} \rangle$, but it no longer satisfies $\langle \tilde{L} \rangle$. Nevertheless, as discussed before, the collection \ddot{W} strictly contains the collection \ddot{H} .

Let us consider now the three following completions on \ddot{S} .

For any $(R, S) \in \ddot{S}, T \in \ddot{S}$,

\rightarrow If $(R, S) \in \ddot{K}$ and $(S \cap T, T) \in \ddot{K}$, then $(R, S \cup T) \in \ddot{K}$. $\langle \tilde{Z}1 \rangle$

\rightarrow If $(R, S) \in \ddot{K}$ and $(R, S \cup T) \in \ddot{K}$, then $(S \cap T, T) \in \ddot{K}$. $\langle \tilde{Z}2 \rangle$

\rightarrow If $(R, S \cup T) \in \ddot{K}$ and $(S \cap T, T) \in \ddot{K}$, then $(R, S) \in \ddot{K}$. $\langle \tilde{Z}3 \rangle$

We set $\ddot{Z} = \langle \ddot{C}; \tilde{Z}1, \tilde{Z}2, \tilde{Z}3 \rangle$.

It has been shown that this set of completions allows for a characterization of dyads [12]. More precisely, it has been proved that we have $\ddot{X} = \ddot{Z}$.

The following theorem may be derived from Th. 5 and from arguments used in four proofs given in [12] (Proofs of Prop. 1, 2, 3 and Th. 2).

Theorem 6. *We have $\ddot{W} = \langle \ddot{C}; \tilde{Z}1, \tilde{Z}2 \rangle$.*

Thus, Th. 6 provides another characterization of contractibility by means of only two global properties.

8 Collapsible pairs

In this section, we show that the three completions $\langle \tilde{X} \rangle, \langle \tilde{Y} \rangle, \langle \tilde{T} \rangle$ allow us to describe collapsibility.

Let $(X, Y) \in \ddot{S}$. If α is a vertex disjoint from Y , we say that $(\alpha X, \alpha Y)$ is a *cone pair*. We denote by $\ddot{\Delta}$ the collection composed of all cone pairs.

Observe that we have $\ddot{C} \subseteq \ddot{\Delta}$. In [11], it was shown that the collection $\ddot{\Delta}$ is closed under duality, but not the collection \ddot{C} .

In the previous sections, we have often considered $\ddot{\mathbb{C}}$ as the starting collection of our completion systems. In the following, we will replace $\ddot{\mathbb{C}}$ by $\ddot{\Delta}$ in order to obtain an exact characterization of collapsibility.

We set $\ddot{\mathbb{E}} = \langle \ddot{\Delta}; \tilde{X}, \tilde{T} \rangle$. Each couple of $\ddot{\mathbb{E}}$ is a *collapsible pair*.

Proposition 12. *We have $(X, Y) \in \ddot{\mathbb{E}}$ if and only if Y collapses onto X .*

Proof.

i) Suppose X is an elementary collapse of Y . If $X = \emptyset$, we are done. Otherwise, there exists a cell D , $D \neq \emptyset$, such that $Y = X \cup \alpha D$ and $X \cap \alpha D = \alpha D^\circ$, where α is a vertex disjoint from D . The couple $(\alpha D^\circ, \alpha D)$ being a cone pair, we have $(\alpha D^\circ, \alpha D) \in \ddot{\mathbb{E}}$. By $\langle \tilde{X} \rangle$, since $X \cap \alpha D = \alpha D^\circ$, we obtain $(X, X \cup \alpha D) \in \ddot{\mathbb{E}}$. Thus, $(X, Y) \in \ddot{\mathbb{E}}$. By induction, we have $(X, Y) \in \ddot{\mathbb{E}}$ whenever Y collapses onto X .

ii) If $(\alpha X, \alpha Y) \in \ddot{\Delta}$, then αY collapses onto αX . Furthermore:

- If T collapses onto $S \cap T$, then $S \cup T$ collapses onto S .

- If T collapses onto S , and S collapses onto R , then T collapses onto R .

By induction on $\langle \tilde{X} \rangle$ and $\langle \tilde{T} \rangle$, the complex Y collapses onto X if $(X, Y) \in \ddot{\mathbb{E}}$. \square

Thus, we have $(\emptyset, X) \in \ddot{\mathbb{E}}$ if and only if X collapses onto \emptyset . In other words, the kernel of $\ddot{\mathbb{E}}$ is precisely made of all collapsible complexes.

The following corollary is a direct consequence of Prop. 12.

Corollary 3. *We have $\ddot{\mathbb{E}} = \langle \ddot{\mathbb{I}}; \mathbb{I}^- \rangle = \langle \ddot{\mathbb{I}}; \mathbb{O}^+ \rangle = \langle \ddot{\mathbb{I}}; \mathbb{O}^+, \mathbb{I}^- \rangle$.*

In addition, the following proposition shows that $\ddot{\mathbb{E}}$ satisfies the property $\langle \tilde{Y} \rangle$.

Proposition 13. *We have $\ddot{\mathbb{E}} = \langle \ddot{\Delta}; \tilde{X}, \tilde{Y}, \tilde{T} \rangle$.*

Proof. Let $(S, S \cup T) \in \ddot{\mathbb{E}}$. The complex $S \cup T$ collapses onto S (Prop. 12). Thus, T collapses onto $S \cap T$. Therefore $(S \cap T, T) \in \ddot{\mathbb{E}}$ (Again by Prop. 12). It means that the collection $\ddot{\mathbb{E}}$ satisfies the property $\langle \tilde{Y} \rangle$. Thus $\ddot{\mathbb{E}} = \langle \ddot{\Delta}; \tilde{X}, \tilde{Y}, \tilde{T} \rangle$. \square

The dunce hat [16] provides an example of a complex X that is contractible, but not collapsible. Since X is contractible, there exists a complex Y , which is collapsible, and which collapses onto X (a consequence of Prop. 3 and Th. 3). Thus, we have $(X, Y) \in \ddot{\mathbb{E}}$ and $(\emptyset, Y) \in \ddot{\mathbb{E}}$, but $(\emptyset, X) \notin \ddot{\mathbb{E}}$. This shows that the collection $\ddot{\mathbb{E}}$ does not satisfy the property $\langle \tilde{L} \rangle$. By considering the dual of the dunce hat in a cell, we obtain an example which shows that the collection $\ddot{\mathbb{E}}$ does not satisfy the property $\langle \tilde{U} \rangle$.

Thanks to Prop. 12, we easily derive the following.

Proposition 14. *We have $\ddot{\mathbb{H}} = \langle \ddot{\Delta}; \tilde{X}, \tilde{T}, \tilde{L} \rangle$.*

Proof. Let $\ddot{\mathbb{K}} = \langle \ddot{\Delta}; \tilde{X}, \tilde{T}, \tilde{L} \rangle$. Clearly, we have $\ddot{\Delta} \subseteq \ddot{\mathbb{H}}$. Furthermore, we have $\ddot{\mathbb{H}} = \langle \ddot{\mathbb{C}}; \tilde{X}, \tilde{T}, \tilde{U}, \tilde{L} \rangle$ (Th. 4). Thus $\ddot{\mathbb{K}} \subseteq \ddot{\mathbb{H}}$. Now, let $(X, Y) \in \ddot{\mathbb{H}}$. By Th. 3, there exists a complex Z such that Z collapses onto X and Z collapses onto Y . The collection $\ddot{\mathbb{K}}$ contains the collection $\langle \ddot{\Delta}; \tilde{X}, \tilde{T} \rangle$. Thus, by Prop. 12, we have $(X, Z) \in \ddot{\mathbb{K}}$ and $(Y, Z) \in \ddot{\mathbb{K}}$. By $\langle \tilde{L} \rangle$, it means that $(X, Y) \in \ddot{\mathbb{K}}$. \square

9 Conclusion

In a previous work, it was shown that only five completions $\langle \tilde{X} \rangle$, $\langle \tilde{Y} \rangle$, $\langle \tilde{T} \rangle$, $\langle \tilde{U} \rangle$, and $\langle \tilde{L} \rangle$, were sufficient to describe the whole collection $\tilde{\mathbb{X}}$ made of all acyclic pairs of complexes. Furthermore, it has been found that a subset of these completions permits to characterize the collection $\tilde{\mathbb{H}}$ made of all homotopic pairs.

In this paper, we show that another subset of these completions corresponds to a collection $\tilde{\mathbb{W}}$, the couples of which are linked by a contractibility relation. These couples, we called contractible pairs, may be generated by two local transforms, perforations and fillings, completed by collapses. We also show that a certain collection $\tilde{\mathbb{E}}$ provides an exact characterization of all collapsible pairs.

Thus, these five completions allow us to describe, in a unified framework, the four remarkable nested collections composed of all collapsible pairs, homotopic pairs, contractible pairs, and acyclic pairs. Not only these completions may act as generators of these collections, but also they provide structural and global properties of them.

References

1. Whitehead, J.H.C.: Simplicial spaces, nuclei, and m -groups, Proc. London Math. Soc. (2), **45**, 243–327 (1939)
2. Björner, A.: Topological methods, Handbook of Combinatorics, R. Graham, M. Grötschel and L. Lovász (eds), North-Holland, Amsterdam, 1819–1872 (1995)
3. Jonsson, J.: Simplicial Complexes of Graphs, Springer Verlag (2008)
4. Kalai, G.: Enumeration of Q -acyclic simplicial complexes, Israel Journal of Mathematics, Vol. 45, No 4, 337–351 (1983)
5. Kong, T.Y.: Topology-preserving deletion of 1's from 2-, 3- and 4-dimensional binary images. In: Discrete Geometry for Computer Imagery. Volume 1347 of LNCS, Springer 3–18 (1997)
6. Couprie, M., Bertrand, G.: New characterizations of simple points in 2D, 3D and 4D discrete spaces. IEEE Transactions on Pattern Analysis and Machine Intelligence **31**(4) (2009) 637–648
7. Bertrand, G.: On critical kernels, Comptes Rendus de l'Académie des Sciences, Série Math. (345), 363–367, (2007)
8. Rosenfeld, A.: Digital topology, Amer. Math. Monthly, 621–630 (1979)
9. Kovalevsky, V. : Finite topology as applied to image analysis, Comp. Vision Graphics, and Im. Proc. 46, 141–161 (1989)
10. Kong, T.Y., Rosenfeld, A.: Digital topology: introduction and survey, Comp. Vision, Graphics and Image Proc. 48, 357–393 (1989)
11. Bertrand, G.: Completions and simplicial complexes, HAL-00761162 (2012)
12. Bertrand, G.: New structures based on completions. In: Discrete Geometry for Computer Imagery. Volume 7749 of LNCS, Springer 83–94 (2013)
13. Bertrand, G.: Completions and simple homotopy. In: Discrete Geometry for Computer Imagery. Volume 8668 of LNCS, Springer 63–74 (2014)
14. Giblin, P.: Graphs, surfaces and homology, Chapman and Hall (1981)
15. Bing, R.H.: Some aspects of the topology of 3-manifolds related to the Poincaré Conjecture, Lectures on Modern Mathematics II, Wiley, 93–128 (1964)
16. Zeeman, E.C.: On the dunce hat, Topology, Vol. 2, 341–358 (1964)
17. Hatcher, A.: Algebraic topology, Cambridge University Press (2001)