



HAL
open science

Do Age-Related Variations Of Sagittal Alignment Rely On SpinoPelvic Organization? An Observational Study Of 1540 Subjects

Solène Prost, Benjamin Blondel, Eloïse Bauduin, Sébastien Pesenti, Brice Ilharreborde, Féthi Laouissat, Guillaume Riouallon, Stéphane Wolff, Vincent Challier, Ibrahim Obeid, et al.

► **To cite this version:**

Solène Prost, Benjamin Blondel, Eloïse Bauduin, Sébastien Pesenti, Brice Ilharreborde, et al.. Do Age-Related Variations Of Sagittal Alignment Rely On SpinoPelvic Organization? An Observational Study Of 1540 Subjects. *Global Spine Journal*, 2022, 13 (8), pp.2144-2154. 10.1177/21925682221074660 . hal-04480928

HAL Id: hal-04480928

<https://hal.science/hal-04480928>

Submitted on 27 Feb 2024

HAL is a multi-disciplinary open access archive for the deposit and dissemination of scientific research documents, whether they are published or not. The documents may come from teaching and research institutions in France or abroad, or from public or private research centers.

L'archive ouverte pluridisciplinaire **HAL**, est destinée au dépôt et à la diffusion de documents scientifiques de niveau recherche, publiés ou non, émanant des établissements d'enseignement et de recherche français ou étrangers, des laboratoires publics ou privés.

Do Age-Related Variations Of Sagittal Alignment Rely On SpinoPelvic Organization? An Observational Study Of 1540 Subjects

Solène Prost, MD¹, Benjamin Blondel, MD, PhD¹ , Eloïse Bauduin, MD², Sébastien Pesenti, MD, PhD³, Brice Iharreborde, MD, PhD⁴, Féthi Laouissat, MD⁵, Guillaume Riouallon, MD⁶, Stéphane Wolff, MD⁶, Vincent Challier, MD⁷ , Ibrahim Obeid, MD⁸, Louis Boissière, MD⁸, Emmanuelle Ferrero, MD⁹, Federico Solla, MD¹⁰, Jean-Charles Le Huec, MD, PhD¹¹, Stéphane Bourret, PhD¹¹, Joe Faddoul, MD¹², Georges Naïm Abi Lahoud, MD¹², Vincent Fièrè, MD¹³, Michiel Vande Kerckhove, MD¹³ , Matthieu Campana, MD⁴, Jonathan Lebhar, MD¹⁴, Hadrien Giorgi, MD¹⁵, Aymeric Faure, MD¹⁵, Erik A. Sauleau, MD, PhD¹⁶, Yann Philippe Charles, MD, PhD¹⁷ and The French Spine Surgery Society (SFCR)

Abstract

Study design: Descriptive radiographic analysis of a prospective multi-center database.

Objective: This study aims to provide normative values of spinopelvic parameters and their correlations according to age and pelvic incidence (PI) of subjects without spinal deformity.

Methods: After Institutional Review Board (IRB) approval, 1540 full spine radiographs were analyzed. Subjects were divided into 3 groups of PI: low PI < 45°, intermediate PI 45–60°, high PI > 60°, and then stratified by age (20–34, 35–49, 50–64, > 65 Y.O). Pelvic and spinal parameters were measured. Statistical analysis between parameters was performed using Bayesian inference and correlation.

Results: Mean age was 53.5 years (845 females, 695 males, range 20–93 years).

¹Aix-Marseille Université, APHM, CNRS, ISM, CHU Timone, Unité de chirurgie rachidienne, France

²Service de Chirurgie Orthopédique et Traumatologie, Hôpital Maison Blanche, CHU de Reims, France

³Service d'Orthopédie Pédiatrique, CHU Timone, Aix-Marseille Université, France

⁴Service de Chirurgie Orthopédique Pédiatrique, AP-HP, CHU Robert Debré, Université de Paris, France

⁵Hôpital Privé de l'Est Lyonnais, Saint-Priest, France

⁶Service de Chirurgie Orthopédique et Traumatologie, Groupe Hospitalier Paris Saint Joseph, Paris, France

⁷Hôpital Privé du Dos Francheville, Périgueux, France

⁸Clinique du Dos Jean Villar, Bruges, France

⁹Service de Chirurgie Orthopédique de la Colonne Vertébrale, AP-HP, Hôpital Européen Georges-Pompidou, Université de Paris, France

¹⁰Service d'Orthopédie Pédiatrique, Fondation Lenal, Nice, France

¹¹Polyclinique Bordeaux Nord Aquitaine, Université de Bordeaux, France

¹²Institut de la Colonne Vertébrale et des Neurosciences, Centre Médico-Chirurgical Bizet, Paris, France

¹³Unité du Rachis, Centre Orthopédique Santy, Lyon, France

¹⁴Institut Locomoteur de l'Ouest Rachis, Centre Hospitalier Privé Saint-Grégoire, France

¹⁵Institut Méditerranéen du Dos, Marseille, France

¹⁶Pôle Santé Publique, Hôpitaux Universitaires de Strasbourg, France

¹⁷Service de Chirurgie du Rachis, Hôpitaux Universitaires de Strasbourg, Université de Strasbourg, France

Corresponding Author:

Benjamin Blondel, MD, PhD, Service de Chirurgie du Rachis, Aix-Marseille Université, CHU Timone 264 rue Saint Pierre, 13005 Marseille, France
Email: benjamin.blondel@ap-hm.fr

In low PI group, lumbar lordosis (LL) decrease was mainly observed in the 2 younger age groups.

In medium and high PI groups, loss of lordosis was linear during aging and occurred mainly on the distal arch of lordosis. Moderate PI group had a stable lordosis apex and thoracolumbar inflection point. High PI group had a stable thoracolumbar inflection point and a more distal lordosis apex in elderly subjects.

For all subjects, kyphosis and pelvic tilt (PT) increased with age.

There was a constant chain of correlation between PI and age groups. Proximal lumbar lordosis (PLL) was correlated with kyphosis and sagittal vertical axis (SVA C7), while the distal lumbar lordosis (DLL) was correlated with PI and PT.

Conclusion: This study provides a detailed repository of sagittal spinopelvic parameters normative values with detailed analysis of segmental kyphosis and lordosis distribution according to gender, age, and PI.

Keywords

sagittal alignment, sagittal balance, thoracolumbar

Introduction

The evolution toward bipedalism required a specific organization of the axial skeleton. This organization is characterized by different pelvic and spinal parameters introduced by Duval-Beaupère et al.,¹ which define a so-called “balanced” position between the pelvis and the spine. The existence of a spinopelvic imbalance, projecting the body’s axis of gravity forward or backward from the sustentation triangle, represents a cause of premature aging of the axial skeleton.²

However, a modification of sagittal alignment during aging is physiological, which will lead to an adaptation of spinal and pelvic parameters, thus allowing an upright position, walking, and maintenance of a horizontal gaze.³ In daily life, sagittal alignment measured on radiographs is more a matter of dynamic sagittal balance, maintained by adaptive mechanisms during aging.

Radiographic parameters defining sagittal alignment are well described in the literature⁴⁻⁶ and an attempt of description of sagittal alignment in degenerative spine based on sacral slope has been reported.³ However, considering that lumbar lordosis (LL) is established between L1 and S1, thoracic kyphosis (TK) between T1 and T12 and that standard normative values can be applied to any subject regardless of age can be a source of error.⁷ The Scoliosis Research Society (SRS)-Schwab classification⁸ gives global correction objectives in patients with spinal deformity, but it does not consider the patient’s age or pelvic incidence (PI). Adult spinal deformity (ASD) correction surgeries have high complication rates⁹ and postoperative under-correction is strongly correlated with clinical deterioration and an increased incidence of mechanical complications.^{8,10} On the other hand, over-correction can also lead to an increased risk of preoperative neurological injury or postoperative proximal junctional kyphosis (PJK).¹⁰⁻¹² Precise knowledge about sagittal alignment in different age groups and the definition of normative values according to PI, seem to be crucial when planning ASD surgery.^{4,13}

In the elderly subjects, a loss of LL and an increase in TK have been identified, leading to pelvic retroversion in order to compensate physiological changes in sagittal alignment. We

hypothesized that changes of spinopelvic parameters and their associated compensatory mechanisms will depend on patient’s PI.

This study aims to provide normative values of sagittal spinopelvic parameters according to age and PI of subjects without spinal deformity. These normative values can, in a further step, potentially serve as a frame for planning ASD surgical correction.

Methods

This is a descriptive study of a prospective multi-center database, including patient data from 16 spinal surgery centers. Institutional review board approval (FC/2019-91) was obtained.

Study Population

All patients older than 20 years who received a full spine EOS radiography (EOS imaging, Paris, France) during clinics in orthopedic surgery or neurosurgery for an acute complaint or systematic screening were selected. Before inclusion, each eligible subject received explanations and gave an informed consent.

Exclusion criteria were: absence of informed consent from the patient or his legal representatives in the case of a patient under guardianship, the presence of a deformity of the spine or lower limbs, history of vertebral or pelvic fracture, the presence of vertebral metastasis or infection, an osteoporotic spine with vertebral compression fractures, history of spinal surgery other than microdiscectomy. Degenerative changes as intervertebral disc degeneration, facet joint osteoarthritis and degenerative spondylolisthesis were considered as normal aging process and radiographs were only excluded if multiple level spondylosis or discopathy led to spinal deformity.

Study Protocol

All patients included in the study had performed EOS biplanar radiographs performed from September 2019 to March 2020 and all radiographic parameters were measured using KEOPS software (SMAIO, Lyon, France) on lateral full spine images

(Figure 1). KEOPS(r) software has demonstrated better reproducibility than standard manual radiological measurements.¹⁴ Each radiograph was analyzed and reconstructed by 2 independent senior spine surgeons to minimize interobserver errors. These investigators set anatomic key points to determine of pelvic and spinal parameters using the KEOPS software.

Demographic Parameters

The age and gender of each subject were recorded and blinded to reviewers. Subjects were stratified into groups according to age: 20–34-year-old (Y.O.) 35–49 Y.O., 50–64 Y.O., and over 65 Y.O. The study population was further stratified by PI: low PI < 45°, intermediate PI 45°–60°, high PI > 60°.⁷

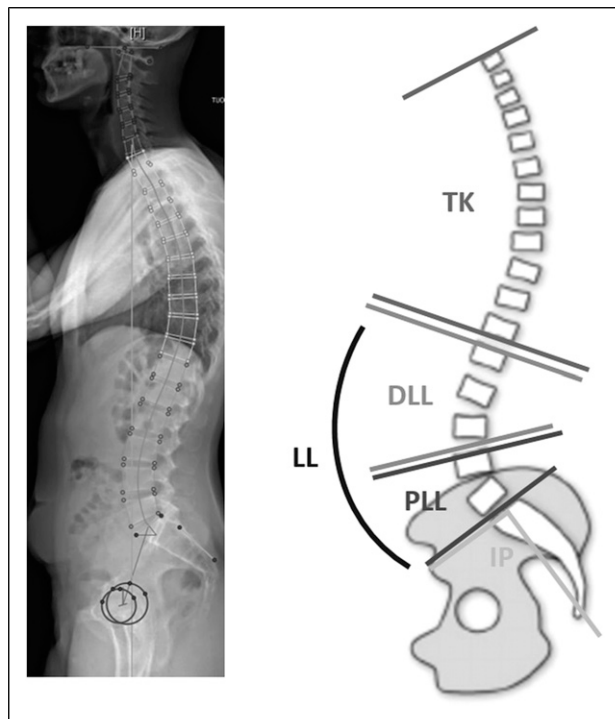


Figure 1. Example of an EOS full spine radiograph reconstruction using KEOPS software (left) and measurements of main parameters (PI, LL, PLL, DLL, and TK) (right).

Radiographic Parameters

The radiographic analysis determined global LL between the thoracolumbar inflection point and the S1 endplate, proximal lumbar lordosis (PLL) between thoracolumbar inflection point and the lumbar apex (defined as the vertebra furthest from the tangent passing through the postero-inferior edge of the last LL vertebra and the postero-superior corner of the first LL vertebra), distal lumbar lordosis (DLL) between the lumbar apex and the S1 endplate, global TK between cervicothoracic and thoracolumbar inflection points. Kyphosis and lordosis were expressed as positive values. PI, sacral slope, pelvic tilt (PT) and the C7 Sagittal Vertical Axis (SVA) were measured.

Statistical Analysis

Statistical evaluation was performed with R Software Version 3.5.3 (R Foundation for Statistical Computing, Vienna, Austria). A Bayesian inference using the Markov chain Monte Carlo techniques with low informative priors was used. To infer the mean of indices and correlation coefficients between 2 indices, point estimates correspond to the median of posterior distributions and credibility intervals to their 2.5 and 97.5 percentiles. Spinopelvic parameters were compared by gender, PI (low PI < 45°, medium PI 45°–60°, high PI > 60°) and age groups. Significance tests were based on the probability of superiority for the difference between 2 means and for correlation coefficients (strong if $\rho < -.5$ or $\rho > .5$). For PI, the medium group and for ages the group 20–34 years were considered as references. The significance level was set at a .95 probability of superiority.

Results

Study Population

Radiographic analysis was performed on 1540 patients (845 females and 695 males). The mean age was 53.5 years (range 20 to 93). The mean PI of the global cohort was 53.3° (range 18.9°–98.0°).

The sample was divided into age and PI categories as described in Table 1.

Table 1. Population stratification by age and pelvic incidence (n).

	Low PI < 45°	Intermediate PI 45-60°	High PI > 60°	Total
Female (n)	188	409	248	845
Male (n)	190	353	152	695
Age Y.O mean (SD)	48.9 (17.3)	54.7 (16.6)	55.6 (16.7)	53.5 (16.9)
20–34 Y.O (n)	83	98	43	224
35–49 Y.O (n)	120	193	111	424
50–64 Y.O (n)	102	235	112	449
>65 Y.O (n)	73	236	134	443
Total	378	762	400	1540

Abbreviations: PI = pelvic incidence, Inter. = intermediate.

The mean PI of the 20–34 Y.O. group was 50.1° and significantly lower than mean PI of 55.5° over 65 Y.O. (Pr > .9999). Females had a significantly higher PI than males: 54.3° vs 52.0° (Pr > .9999). Age and global TK did not differ significantly between genders (Table 2).

Low PI Group

In the low PI group, there were 188 females and 190 males. The distributions of thoracolumbar inflection and lumbar apex were more distal in subjects over 65 Y.O. when compared to younger subjects (Figure 2).

Global LL decreased with age in PLL and DLL segments (Figure 3). Thoracic kyphosis was stable in age groups from 20 to 64 Y.O. and then increased significantly (Pr = .999) after 65 Y.O. The SVA increased after 49 Y.O., whereas pelvic retroversion occurred as early as 35 Y.O., concomitantly to lordosis decrease.

Table 3 and Figure 3 demonstrate radiographic parameters by age.

Intermediate PI Group

In the intermediate PI population, there were 409 females and 353 males. The thoracolumbar inflection point was more distal

in subjects over 65 Y.O., while the lumbar apex remained stable throughout age groups (Figure 4).

The global LL decrease was 7.5° with a constant decrease across age categories: 59.3° at 20–34 Y.O. vs 51.6° after 65 Y.O.

The decrease occurred mainly in the PLL between 20 and 49 Y.O. and then in the DLL after 49 Y.O. Thoracic kyphosis was stable until 50 Y.O. and then increased significantly (Pr > .9999) in subjects over 65 Y.O. PI and SVA increased after 49 Y.O. Radiographic results of the intermediate PI group are presented in Table 4 and Figure 5.

High PI Group

In the high PI population, there were 248 females and 152 males. The thoracolumbar inflection point was more distal in elderly subjects while the LL apex remained unchanged across age groups (Figure 6).

The decrease in LL was more significant (Pr = .97) before 49 Y.O.:69.8° in 20–34 Y.O. vs 66.2° in 35–49 Y.O. This decrease in lordosis involved PLL, whereas DLL varied only slightly across ages.

Thoracic kyphosis was stable until 49 Y.O. and then increased from 45.5° in the 35–49 Y.O. age group to 54° in the over 65 Y.O. age group. The SVA was stable until 64 Y.O. and

Table 2. Comparison of pelvic and spinal parameters Male/Female.

	Female			Male			Pr (>ref)
	Mean	SD	97.5%CI	Mean	SD	97.5%CI	
Age	53.9	17.2	51.9–54.6	52.9	16.7	51.3–54.3	.1279
PI (°)	54.3	11.8	53.2–55.7	52.0	11.0	51.1–53.8	<6.7 10 ⁻⁵
PT (°)	17.2	8.7	16.7–17.8	15.9	7.7	15.3–16.5	.001
LL (°)	57.2	12.4	56.3–58	53.4	12.4	52.5–54.3	<6.7 10 ⁻⁵
PLL (°)	20.2	7.3	19.7–20.6	17.4	6.7	16.9–17.9	<6.7 10 ⁻⁵
DLL (°)	37.1	9.1	36.4–37.7	36.1	9.1	35.4–36.8	.0167
TK (°)	47.6	13.4	46.7–48.5	48.4	12.9	47.4–49.3	.8765
SVA (mm)	18.1	38.7	15.7–20.9	29.2	38.9	26.1–31.8	>.9999

Abbreviations: SVA = Sagittal Vertical Axis, PI = Pelvic incidence, PT = Pelvic Tilt, LL = Lumbar Lordosis, PLL = Proximal Lumbar Lordosis, DLL = Distal Lumbar Lordosis, TK = Thoracic Kyphosis, 97.5%CI = Confidence interval.

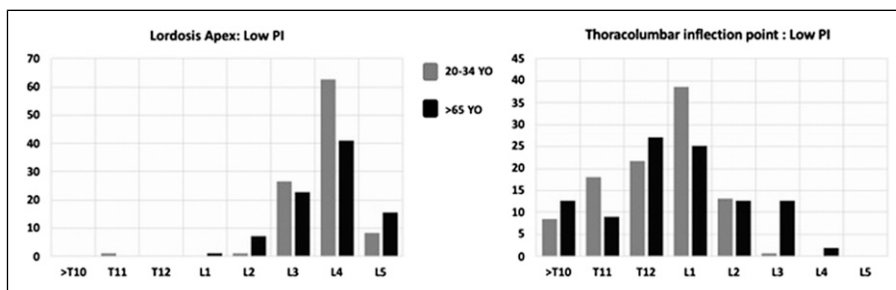


Figure 2. Distribution of thoracolumbar inflection point and lumbar apex.

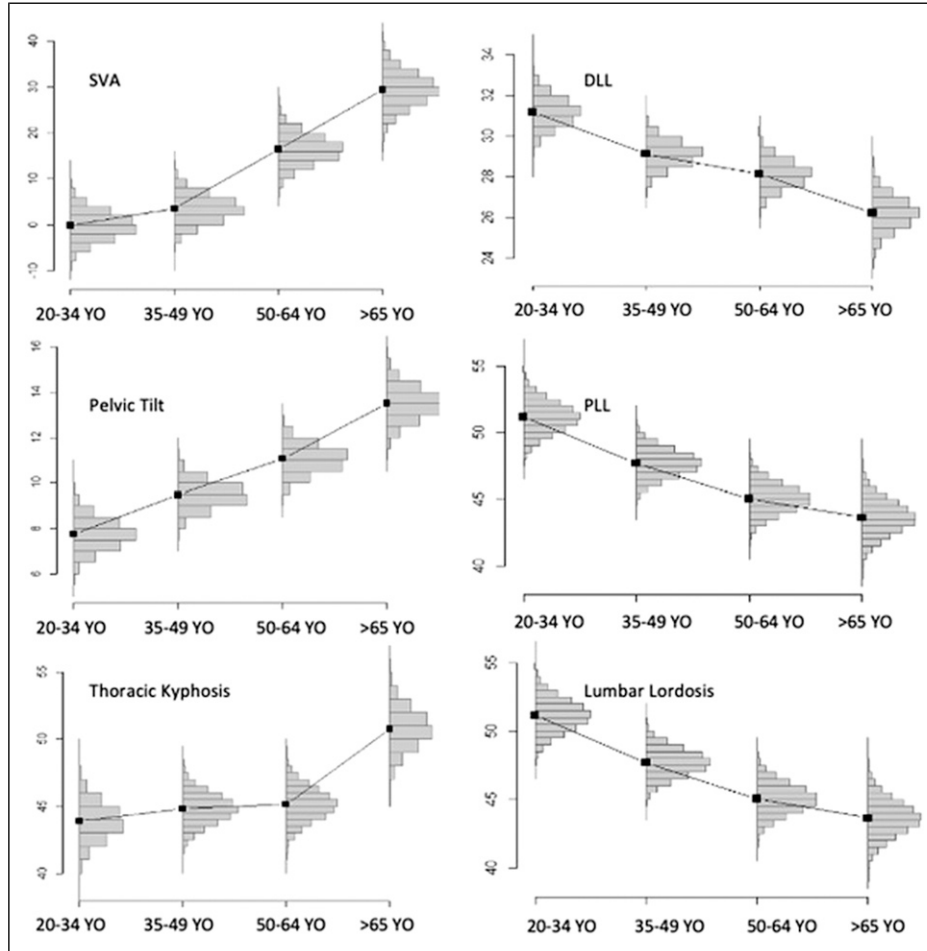


Figure 3. Pelvic and spinal parameters of subjects with low pelvic incidence by age category. (SVA = Sagittal Vertical Axis, PI = Pelvic incidence, PT = Pelvic Tilt, LL = Lumbar Lordosis, PLL = Proximal Lumbar Lordosis, DLL = Distal Lumbar Lordosis, TK = Thoracic Kyphosis).

Table 3. Pelvic and spinal parameters of subjects with low pelvic incidence by age category.

Low PI		Age	SVA (mm)	PI(°)	PT (°)	LL (°)	PLL (°)	DLL (°)	TK (°)
Global cohort	Mean	48.9	11.3	39.1	10.3	46.9	18.3	28.8	45.8
	SD	17.3	35.7	4.9	6.3	11.4	7.2	7	12.8
20–34 Y.O	Mean	26.2	−6.0	38.9	7.7	51.4	20.1	31.3	43.7
	SD	4.3	38.6	4.6	5.9	12.0	7.9	7.0	12.4
	Pr (>ref)	Reference category							
35–49 Y.O	Mean	42.3	3.8	38.6	9.5	47.7	18.5	29.1	44.8
	SD	4.4	28.8	5.4	5.8	9.4	6.2	6.3	11.9
	Pr (>ref)	—	.829	—	.977	.986	.934	.982	.707
50–64 Y.O	Mean	56.5	18.2	39.2	11.1	45.0	17.2	28.1	45.2
	SD	4.2	33.5	4.9	5.9	12.5	7.4	7.3	12.6
	Pr (>ref)	—	.999	—	.999	.999	.997	.999	.764
>65 Y.O	Mean	75.2	33.8	39.7	13.5	43.5	17.3	26.2	50.9
	SD	6.5	32.1	4.3	6.7	10.7	7.5	7.0	14.1
	Pr (>ref)	—	>.9999	—	>.9999	>.9999	.993	>.9999	.999

Abbreviations: SVA = Sagittal Vertical Axis, PI = Pelvic incidence, PT = Pelvic Tilt, LL = Lumbar Lordosis, PLL = Proximal Lumbar Lordosis, DLL = Distal Lumbar Lordosis, TK = Thoracic Kyphosis.

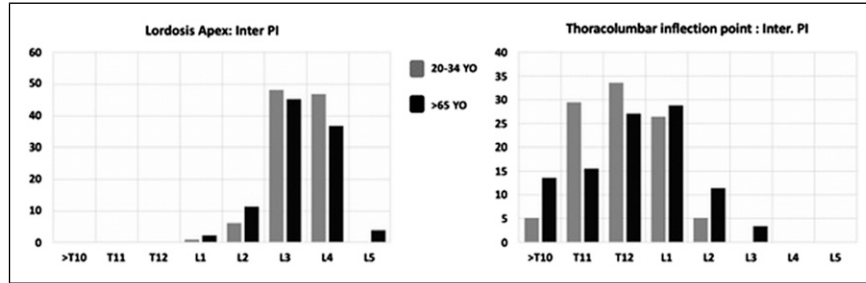


Figure 4. Distribution of thoracolumbar inflection point and lumbar apex.

Table 4. Pelvic and spinal parameters of subjects with intermediate pelvic incidence by age category.

Intermediate PI		Age	SVA (mm)	PI(°)	PT (°)	LL (°)	PLL (°)	DLL (°)	TK (°)
Global cohort	Mean	54.7	23.5	52.5	16.2	54.9	18.7	36.3	48.4
	SD	16.6	37.3	4.2	6.8	10.7	7.2	6.8	13.4
20–34 Y.O	Mean	26.8	0.7	51.9	12.8	59.3	20.2	39.1	44.8
	SD	4.4	30.6	4.3	6.1	7.6	5.0	5.8	12.6
	Pr (>ref)	Reference category							
35–49 Y.O	Mean	42.9	11.6	52.2	14.0	57.1	19.0	38.2	44.7
	SD	4.4	29.4	4.1	5.8	9.9	6.6	6.0	11.7
	Pr (>ref)	—	.900	—	.93	.944	.909	.858	.42
50–64 Y.O	Mean	56.6	23.4	52.4	16.2	54.7	18.5	36.2	48.0
	SD	4.1	33.0	4.1	6.5	10.7	7.3	6.7	13.1
	Pr (>ref)	—	>.9999	—	>.9999	1	.974	1	.97
>65 Y.O	Mean	74.0	42.7	53.1	19.5	51.6	18.0	33.6	53.2
	SD	5.9	40.3	4.1	6.6	11.3	8.3	6.9	14.1
	Pr (>ref)	—	>.9999	—	>.9999	>.9999	.993	>.9999	>.9999

Abbreviations: SVA = Sagittal Vertical Axis, PI = Pelvic incidence, PT = Pelvic Tilt, LL = Lumbar Lordosis, PLL = Proximal Lumbar Lordosis, DLL = Distal Lumbar Lordosis, TK = Thoracic Kyphosis.

then increased significantly: 25.4 mm between 50 and 64 Y.O. vs 57.1 mm after 65 Y.O.

Pelvic tilt increased mainly after 35 Y.O. and after 64 Y.O.

Radiographic results of the high PI group are reported in Table 5 and Figure 7.

Correlation Analysis

Regardless of PI, there was a stable and significant correlation chain across age categories with a strong correlation between the proximal arch of lordosis (PLL) and TK. As the amount of PLL correlated with SVA and TK, the distal arch of lordosis (DLL) correlated with PI and PT.

Correlations per PI group are presented in Figure 8.

Discussion

Diagnosis and surgical management of multilevel degenerative spinal pathologies requires knowledge of normative values of the different parameters and associated adaptive mechanisms that occur with aging.^{15,16}

Different studies^{5,6} have reported changes in spinal alignment during aging with a progressive increase in TK, PT,

and SVA, concomitantly to a progressive loss of LL. Such results highlighted the importance of age in surgical planning for ASD patients. Lafage et al.⁴ defined thresholds for various parameters (PI-LL, SVA, PT) according to age in the setting of ASD correction objectives. This necessity for age-related alignment targets is also important during postoperative course as it was also reported that overcorrected patients were at higher risk of PJK.¹² Recently, Sebaaly et al.³ described sagittal alignment of the degenerative spine in an attempt to classify patients and to offer treatment algorithm. However, the main limitation is related to the use of sacral slope for classification as this parameter is positional and as a consequence variable. It seems therefore more useful in daily practice to stratify patients according to an anatomical parameter such as PI. The interest of PI was reported by Protopsaltis et al.¹³ using age-specific normative SF-36-PCS values to determine alignment targets in different PI groups and recently Zhou et al.¹⁷ reported PI stratified sagittal alignment parameters according to age in a Chinese population.

In this study, we analyzed a large cohort in order to provide a reliable baseline of pelvic and spinal parameters with a stratification by age and PI that would facilitate its use in

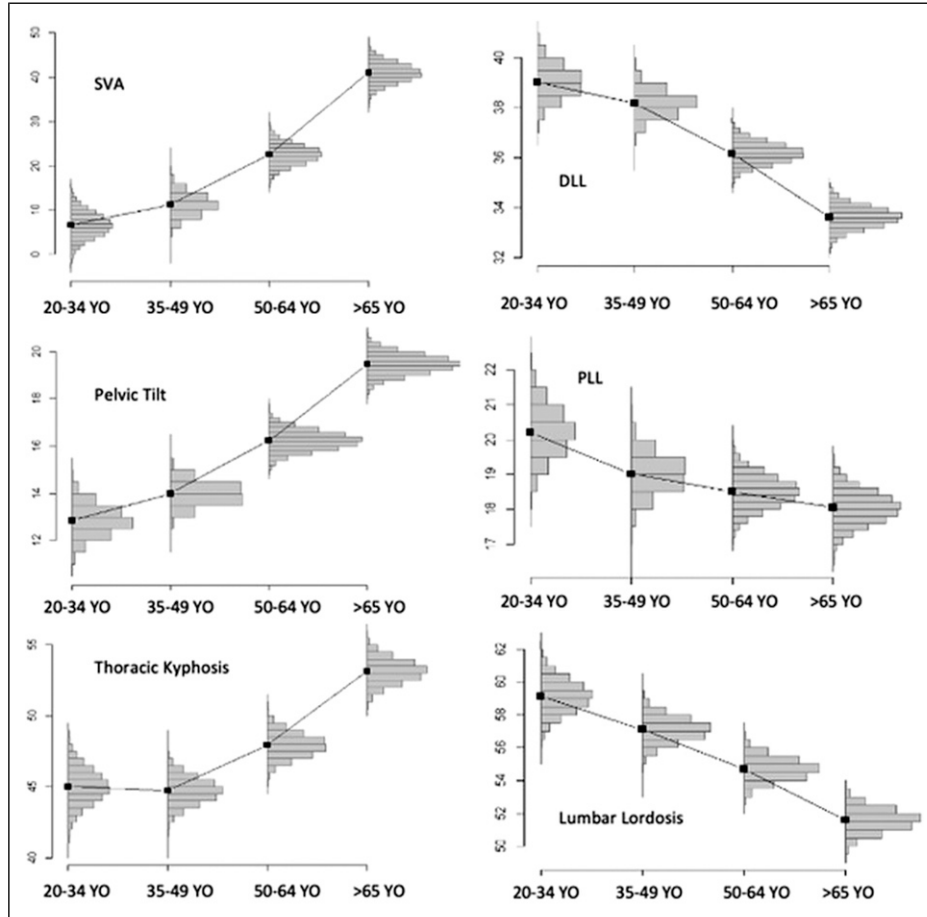


Figure 5. Pelvic and spinal parameters of subjects with intermediate pelvic incidence by age category. (SVA = Sagittal Vertical Axis, PI = Pelvic incidence, PT = Pelvic Tilt, LL = Lumbar Lordosis, PLL = Proximal Lumbar Lordosis, DLL = Distal Lumbar Lordosis, TK = Thoracic Kyphosis).

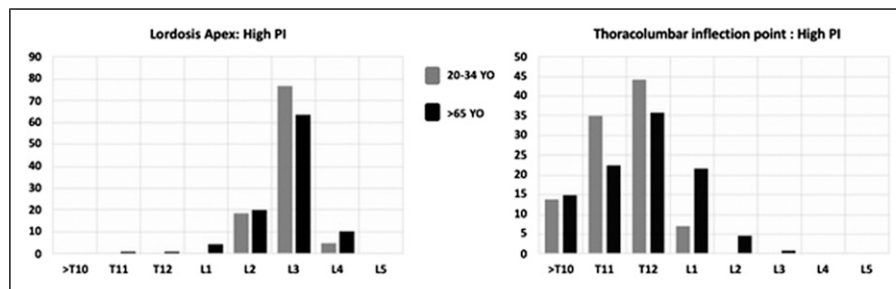


Figure 6. Distribution of thoracolumbar inflection point and lumbar apex.

current practice. According to our findings, sagittal spinal aging seems to begin with a loss of LL. The amplitude of this decrease was important between 20–34 Y.O. and 35–49 Y.O., particularly in subjects with low PI (Tables 2–4) while the evolution of the other parameters (PT, TK, SVA) showed later variations after the age of 50 years. These changes are responsible for an anterior malalignment with subsequent development of adaptive mechanisms that aims to bring back the body’s center of gravity behind the femoral heads.^{18–20} Adaptive mechanisms (i.e., the amount of

pelvic retroversion) depended on the subject’s spinopelvic organization as the amount of PT is linked to the amount of PI.^{21,22}

Furthermore, the present study focused on the segmentation of LL into 2 arches allowing a more detailed analysis of the evolution across age groups, according to PI.

In subjects with low PI, the loss of lordosis with aging was distributed almost equally between PLL and DLL. It leads to a caudal shift of the lordosis apex and the thoracolumbar inflection point and an early onset of pelvic retroversion (before

Table 5. Pelvic and spinal parameters of subjects with high pelvic incidence by age category.

High PI		Age	SVA (mm)	PI(°)	PT (°)	LL (°)	PLL (°)	DLL (°)	TK (°)
Global cohort	Mean	55.6	33.5	68.2	23.4	64.6	19.8	44.8	49.1
	SD	16.7	42.9	6.5	7.5	10.7	6.8	7.6	12.8
20–34 Y.O	Mean	26.9	8.1	67.0	17.7	69.8	20.5	49.3	43.9
	SD	4.8	28.6	6.8	5.8	7.7	5.4	6.4	12.0
	Pr (>ref)	Reference category							
35–49 Y.O	Mean	42.8	22.9	69.0	23.0	66.2	20.2	46.0	45.5
	SD	4.3	40.8	7.5	8.1	11.7	6.4	8.3	10.5
	Pr (>ref)	—	.709	—	>.9999	.97	.557	.99	.711
50–64 Y.O	Mean	56.6	25.4	67.4	23.1	64.5	20.2	44.3	48.7
	SD	4.3	31.3	6.0	6.3	10.4	7.5	6.5	11.8
	Pr (>ref)	—	.853	—	>.9999	.998	.568	>.9999	.98
>65 Y.O	Mean	74.4	57.1	68.3	25.6	61.5	19.0	42.7	54.0
	SD	6.6	46.3	6.2	7.4	10.1	6.9	7.7	14.0
	Pr (>ref)	—	>.9999	—	>.9999	>.9999	.875	>.9999	>.9999

Abbreviations: SVA = Sagittal Vertical Axis, PI = Pelvic incidence, PT = Pelvic Tilt, LL = Lumbar Lordosis, PLL = Proximal Lumbar Lordosis, DLL = Distal Lumbar Lordosis, TK = Thoracic Kyphosis.

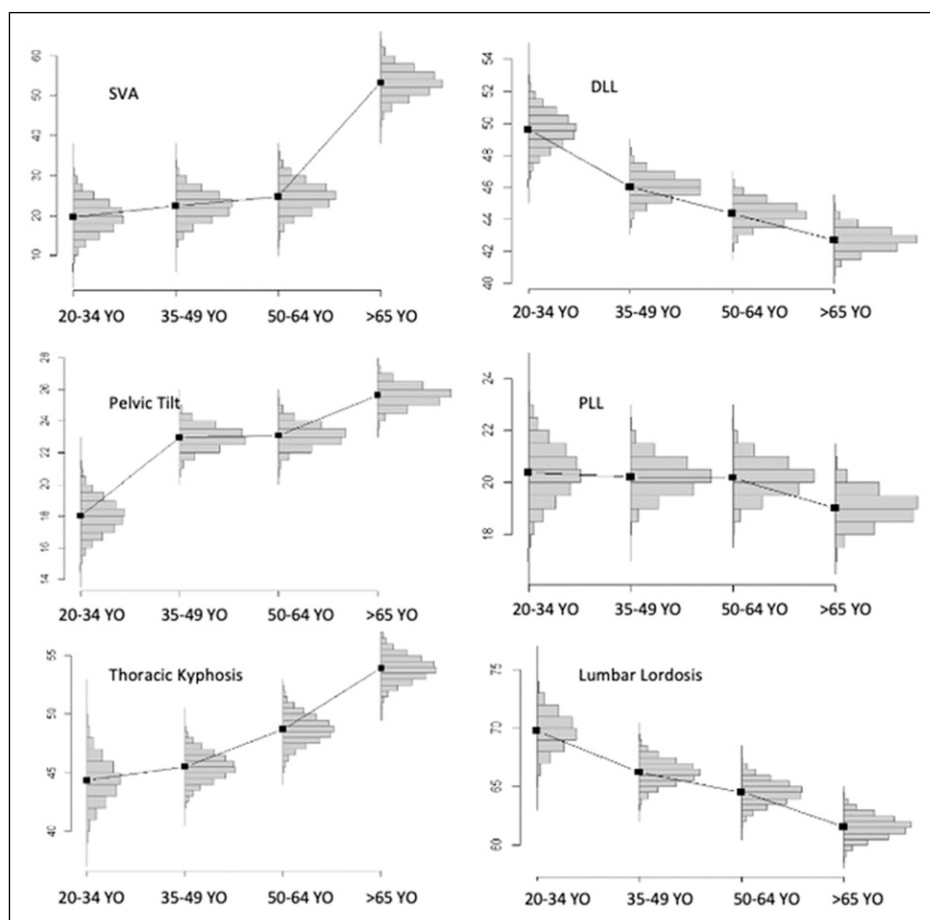


Figure 7. Pelvic and spinal parameters of subjects with high pelvic incidence by age category. (SVA = Sagittal Vertical Axis, PI = Pelvic incidence, PT = Pelvic Tilt, LL = Lumbar Lordosis, PLL = Proximal Lumbar Lordosis, DLL = Distal Lumbar Lordosis, TK = Thoracic Kyphosis).

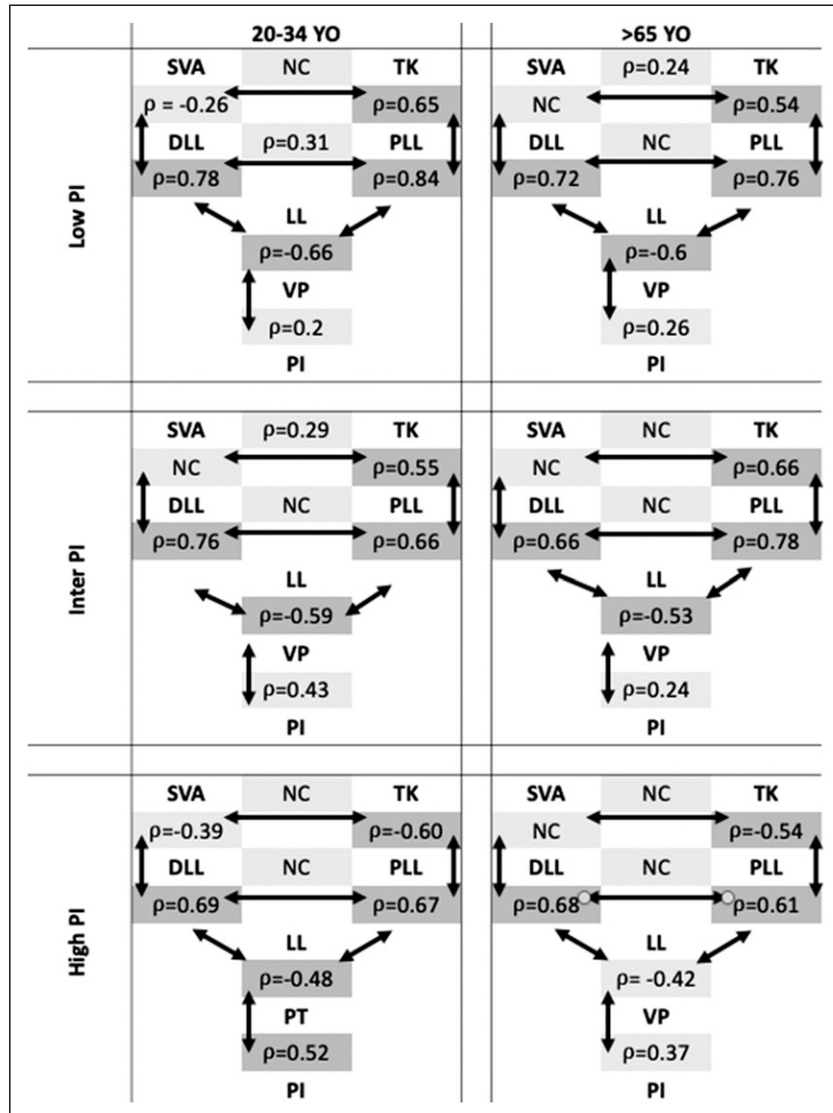


Figure 8. Correlation between spinopelvic parameters by PI and age. (SVA = Sagittal Vertical Axis, PI = Pelvic incidence, PT = Pelvic Tilt, LL = Lumbar Lordosis, PLL = Proximal Lumbar Lordosis, DLL = Distal Lumbar Lordosis, TK = Thoracic Kyphosis).

35 Y.O). The increase in SVA and TK occurred later in this population with greater amplitude changes between 50–64 Y.O and > 65Y.O. We also found a correlation between SVA and TK in subjects > 65 Y.O with low PI. This correlation can be explained by a lower pelvic retroversion capacity of these patients, leading to an early imbalance when the TK increases.

In subjects with intermediate PI, loss of lordosis with aging occurred mainly in the PLL and the subjects showed a caudal shift of the thoracolumbar inflection point while the lumbar apex remains stable. The SVA, TK, and PT increased gradually after 49 years of age without any major change in the chain of correlation that links them with age.

In subjects with a high PI, the loss of lordosis was mainly related to the DLL, whereas the PLL remains almost constant across ages.

These differences with aging of the 2 lordosis arches highlight the importance of considering them as 2 distinct entities in clinical practice, using the lordosis apex and the thoracolumbar inflection point to localize them. LL usually described between the endplate of S1 and the upper endplate of L1 should not be considered as a functional unit. The objective of surgical ASD correction can therefore consider the amplitude of each arc of lordosis and the location of the apex of LL and the thoracolumbar inflection point to restore a physiological lordosis. In our study, there was a strong correlation between LL and PT, whereas the PLL was strongly correlated with TK, regardless of age and PI. These results are consistent with those reported by Pesenti et al.⁷ who reported a strong correlation between PLL and PI in asymptomatic subjects while there was no direct correlation between DLL and PI.

When analyzing the correlation chain linking the pelvic and spinal parameters, our results confirmed that when a segment changes because of aging, the other segments adapt to maintain global alignment, which is in line with previous findings of Berthonnaud et al.²³ and Iyer and al.⁵ However, our study allowed to identify the specific correlations of each lordosis segment in the lumbar spine, PLL was strongly correlated to TK and acted as an adaptive zone between the DLL and the thorax, especially for subjects with a low PI for whom DLL changed only slightly with aging.

In clinical practice, the results of this study provide normative values of spinopelvic parameters according to age and PI. In a further step, these results might be used to improve surgical planning for ASD patients according to age and PI. The present data could help to establish specific alignment targets more precisely, while taking regional sagittal parameters such as PLL and DLL into account. In other words, knowledge of normative values of PLL and DLL according to age and PI will help to understand in which part of LL (DLL and/or PLL) the loss occurred and which segment needs to be restored during surgery.

This study has limitations. While we reported a stable chain of correlations over time, unlike the studies of Iyer et al.⁵ and Hu et al.⁶ our study did not include an analysis of the positioning of the lower limbs. Furthermore, clinical scores were not assessed in this cohort of subjects and mostly Caucasian subjects were enrolled and ethnic differences might influence results.

Conclusion

This study provides a detailed repository of sagittal spinopelvic parameters normative values with detailed analysis of segmental kyphosis and lordosis distribution according to age and PI to allow a “patient specific” analysis of spinal aging. In subjects with low PI, the loss of lordosis with aging was distributed almost equally between PLL and DLL leading to a caudal shift of the lordosis apex. In subjects with a high PI, the loss of lordosis was mainly related to the DLL, whereas the PLL remains almost constant across ages. Regardless of PI, there was a stable and significant correlation chain across age categories with a strong correlation between the proximal arc of lordosis (PLL) and TK, the distal arc of lordosis (DLL) correlated with PI and PT.

Acknowledgments

Philippe Roussouly for technical support using the KEOPS online data base.

Declaration of conflicting interests

The author(s) declared no potential conflicts of interest with respect to the research, authorship, and/or publication of this article.

Funding

The author(s) received no financial support for the research, authorship, and/or publication of this article.

Authors Note

Yann Philippe Charles is consultant for Stryker, Clariance, Philips and Ceraver; he received royalties and grants unrelated to this study from Stryker and Clariance. Eloïse Bauduin has no conflict of interest. Sébastien Pesenti has no conflict of interest. Brice Ilharreborde is consultant for Zimmer Biomet, Medtronic and Implanet. Solène Prost has no conflict of interest. Féthi Laouissat is consultant for Spineart and SMAIO. Guillaume Riouallon is consultant for Medtronic, Stryker and NewClip; he received royalties from Euros. Stéphane Wolff has no conflict of interest. Vincent Challier is shareholder of Follow Health SA and consultant for Clariance. Ibrahim Obeid is consultant for Medtronic and Depuy Synthes; he received grants from DePuy Synthes unrelated to this study and royalties from Clariance, Alphatec and Spineart. Louis Boissière is consultant for Neo and Euros; he received grants from DePuy Synthes unrelated to this study. Emmanuelle Ferrero has no conflict of interest. Federico Solla received funding to attend meetings from Medicea, Medtronic and Euros. Jean-Charles Le Huec is consultant for Medtronic and BD Bard; he received royalties and grants unrelated to this study from Medtronic. Stéphane Bourret has no conflict of interest. Joe Faddoul has no conflict of interest. Georges Naimi Abi Lahoud has no conflict of interest. Vincent Fièrè is consultant for Clariance; he received royalties Medicea and Clariance. Michiel Vande Kerckhove has no conflict of interest. Matthieu Campana has no conflict of interest. Jonathan Lebhar has no conflict of interest. Hadrien Giorgi has no conflict of interest. Aymeric Faure is consultant for OSD. Erik André Sauleau has no conflict of interest. Benjamin Blondel is associate editor for OTSR Elsevier-Masson and consultant for Medicea, Medtronic, Implanet, Vexim Stryker and 3M.

Institutional Review

Institutional review board approval (FC/2019-91). The manuscript does not contain information about devices/drugs.

References

1. Duval-Beaupère G, Schmidt C, Cosson P. A barycentremetric study of the sagittal shape of spine and pelvis: The conditions required for an economic standing position. *Ann Biomed Eng.* 1992;20(4):451-462.
2. Schwab FJ, Blondel B, Bess S, et al. Radiographical spinopelvic parameters and disability in the setting of adult spinal deformity: A prospective multicenter analysis. *Spine.* 2013;38(13):E803-E812. doi:10.1097/BRS.0b013e318292b7b9.
3. Sebaaly A, Grobost P, Mallam L, Roussouly P. Description of the sagittal alignment of the degenerative human spine. *Eur Spine J.* 2018;27(2):489-496. doi:10.1007/s00586-017-5404-0.

4. Lafage R, Schwab F, Challier V, et al. Defining spino-pelvic alignment thresholds: Should operative goals in adult spinal deformity surgery account for age? *Spine*. 2016;41(1):62-68. doi:[10.1097/BRS.0000000000001171](https://doi.org/10.1097/BRS.0000000000001171).
5. Iyer S, Lenke LG, Nemani VM, et al. Variations in Sagittal alignment parameters based on age: A prospective study of asymptomatic volunteers using full-body radiographs. *Spine*. 2016;41(23):1826-1836. doi:[10.1097/BRS.0000000000001642](https://doi.org/10.1097/BRS.0000000000001642).
6. Hu Z, Man GCW, Yeung KH, et al. Young investigator award winner: Age- and sex-related normative value of whole-body Sagittal alignment based on 584 asymptomatic Chinese adult population from age 20 to 89. *Spine*. 2020;45(2):79-87. doi:[10.1097/BRS.00000000000003187](https://doi.org/10.1097/BRS.00000000000003187).
7. Pesenti S, Lafage R, Stein D, et al. The amount of proximal lumbar lordosis is related to pelvic incidence. *Clin Orthop*. 2018; 476(8):1603-1611. doi:[10.1097/CORR.0000000000000380](https://doi.org/10.1097/CORR.0000000000000380).
8. Terran J, Schwab F, Shaffrey CI, et al. The SRS-Schwab adult spinal deformity classification. *Neurosurgery*. 2013;73(4): 559-568. doi:[10.1227/NEU.0000000000000012](https://doi.org/10.1227/NEU.0000000000000012).
9. Lee BH, Kim T-H, Chong H-S, et al. Prognostic factor analysis in patients with metastatic spine disease depending on surgery and conservative treatment: Review of 577 cases. *Ann Surg Oncol*. 2013;20(1):40-46. doi:[10.1245/s10434-012-2644-4](https://doi.org/10.1245/s10434-012-2644-4).
10. Ferrero E, Bocahut N, Lefevre Y, et al. Proximal junctional kyphosis in thoracic adolescent idiopathic scoliosis: Risk factors and compensatory mechanisms in a multicenter national cohort. *Eur Spine J*. 2018;27(9):2241-2250. doi:[10.1007/s00586-018-5640-y](https://doi.org/10.1007/s00586-018-5640-y).
11. Cerpa M, Sardar Z, Lenke L. Revision surgery in proximal junctional kyphosis. *Eur Spine J*. 2020;29(suppl 1):78-85. doi:[10.1007/s00586-020-06320-y](https://doi.org/10.1007/s00586-020-06320-y).
12. Lafage R, Schwab F, Glassman S, et al. Age-adjusted alignment goals have the potential to reduce PJK. *Spine*. 2017;42(17): 1275-1282. doi:[10.1097/BRS.0000000000002146](https://doi.org/10.1097/BRS.0000000000002146).
13. Protosaltis TS, Soroceanu A, Tishelman JC, et al. Should Sagittal spinal alignment targets for adult spinal deformity correction depend on pelvic incidence and age? *Spine*. 2020; 45(4):250-257. doi:[10.1097/BRS.00000000000003237](https://doi.org/10.1097/BRS.00000000000003237).
14. Maillot C, Ferrero E, Fort D, Heyberger C, Le Huec J-C. Reproducibility and repeatability of a new computerized software for sagittal spinopelvic and scoliosis curvature radiologic measurements: Keops[®]. *Eur Spine J*. 2015;24(7):1574-1581. doi:[10.1007/s00586-015-3817-1](https://doi.org/10.1007/s00586-015-3817-1).
15. Le Huec JC, Charosky S, Barrey C, Rigal J, Aunoble S. Sagittal imbalance cascade for simple degenerative spine and consequences: Algorithm of decision for appropriate treatment. *Eur Spine J*. 2011; 20(suppl 5):699-703. doi:[10.1007/s00586-011-1938-8](https://doi.org/10.1007/s00586-011-1938-8).
16. Asai Y, Tsutsui S, Oka H, et al. Sagittal spino-pelvic alignment in adults: The Wakayama Spine Study. *PLoS One*. 2017;12(6): e0178697. doi:[10.1371/journal.pone.0178697](https://doi.org/10.1371/journal.pone.0178697).
17. Zhou S, Sun Z, Li W, Zou D, Li W. The pelvic incidence stratified sagittal spinopelvic alignment in asymptomatic Chinese population with different age groups. *Global Spine J*. 2021. doi:[10.1177/2192568221989647](https://doi.org/10.1177/2192568221989647).
18. Bao H, Liabaud B, Varghese J, et al. Lumbosacral stress and age may contribute to increased pelvic incidence: An analysis of 1625 adults. *Eur Spine J*. 2018;27(2):482-488. doi:[10.1007/s00586-017-5324-z](https://doi.org/10.1007/s00586-017-5324-z).
19. Barrey C, Jund J, Nosedà O, Roussouly P. Sagittal balance of the pelvis-spine complex and lumbar degenerative diseases. A comparative study about 85 cases. *Eur Spine J*. 2007;16(9): 1459-1467. doi:[10.1007/s00586-006-0294-6](https://doi.org/10.1007/s00586-006-0294-6).
20. Le Huec JC, Thompson W, Mohsinaly Y, Barrey C, Faundez A. Sagittal balance of the spine. *Eur Spine J*. 2019;28(9): 1889-1905. doi:[10.1007/s00586-019-06083-1](https://doi.org/10.1007/s00586-019-06083-1).
21. Laouissat F, Sebaaly A, Gehrchen M, Roussouly P. Classification of normal sagittal spine alignment: Refounding the Roussouly classification. *Eur Spine J*. 2018;27(8):2002-2011. doi:[10.1007/s00586-017-5111-x](https://doi.org/10.1007/s00586-017-5111-x).
22. Roussouly P, Gollogly S, Berthonnaud E, Dimnet J. Classification of the normal variation in the sagittal alignment of the human lumbar spine and pelvis in the standing position. *Spine*. 2005; 30(3):346-353. doi:[10.1097/01.brs.0000152379.54463.65](https://doi.org/10.1097/01.brs.0000152379.54463.65).
23. Berthonnaud E, Dimnet J, Roussouly P, Labelle H. Analysis of the sagittal balance of the spine and pelvis using shape and orientation parameters. *J Spinal Disord Tech*. 2005;18:40-47. doi:[10.1097/01.bsd.0000117542.88865.77](https://doi.org/10.1097/01.bsd.0000117542.88865.77).