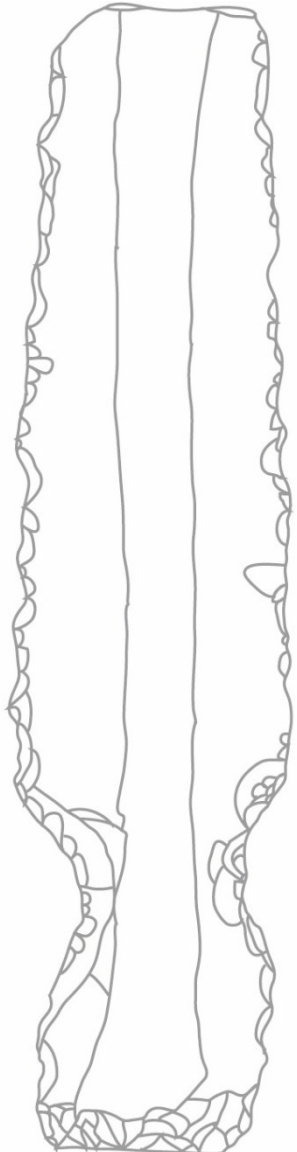


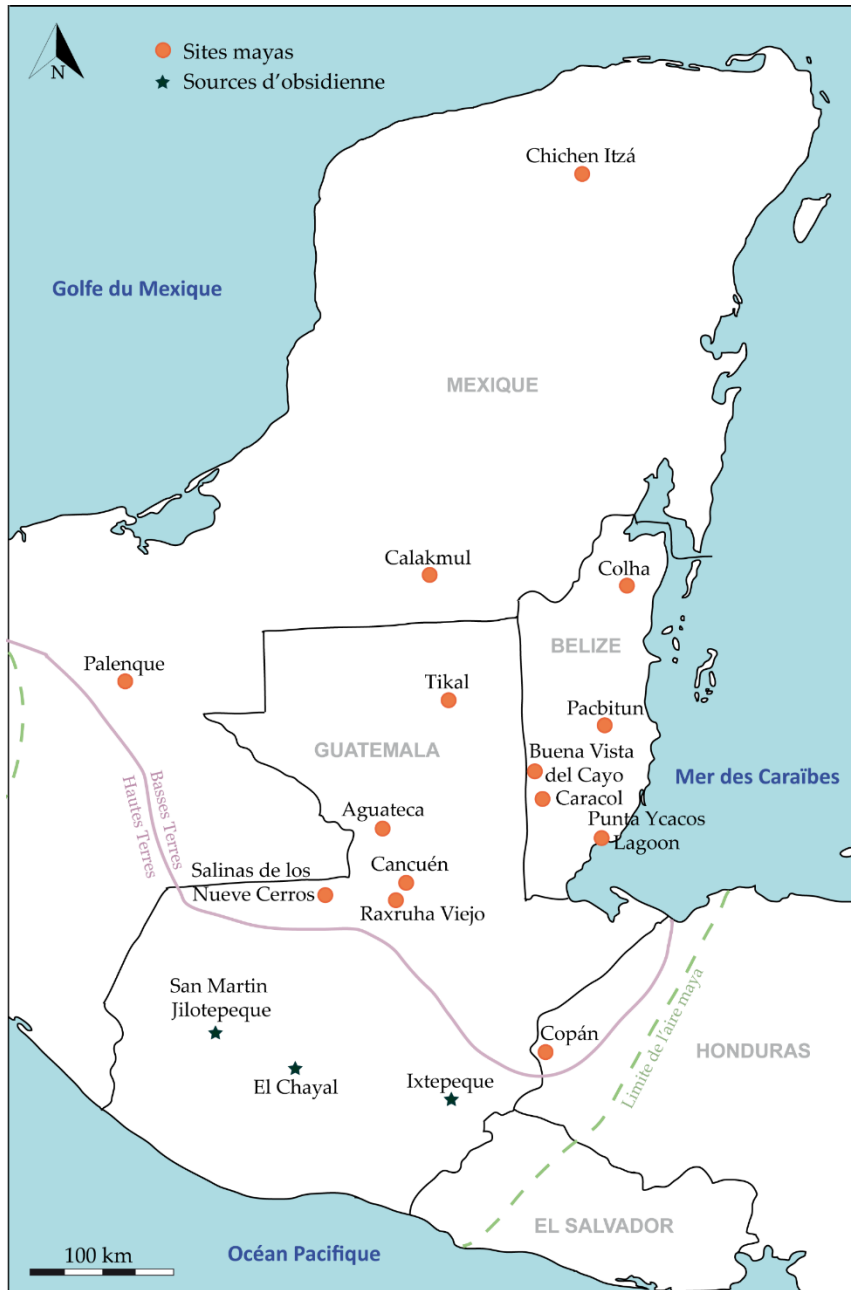
Theme 3: Addressing past tools/kits to reconstruct social dynamics

Domestic, artisanal, and ritual activities in a classical Maya city.

Functional analysis of obsidian blades from the Cancuén site (AD 650-800)

Naya Cadalen, Chloé Andrieu and Sylvie Beyries

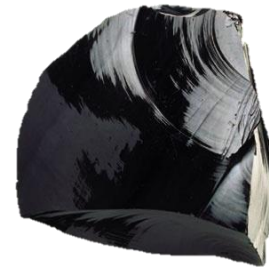




Classic period: AD 250-900/1000

Raw products

Finished goods



Who are the artisans?

Where are the workshops?

What was the value of their activities?

Cancuén (Petén department, Guatemala) : AD 650-800

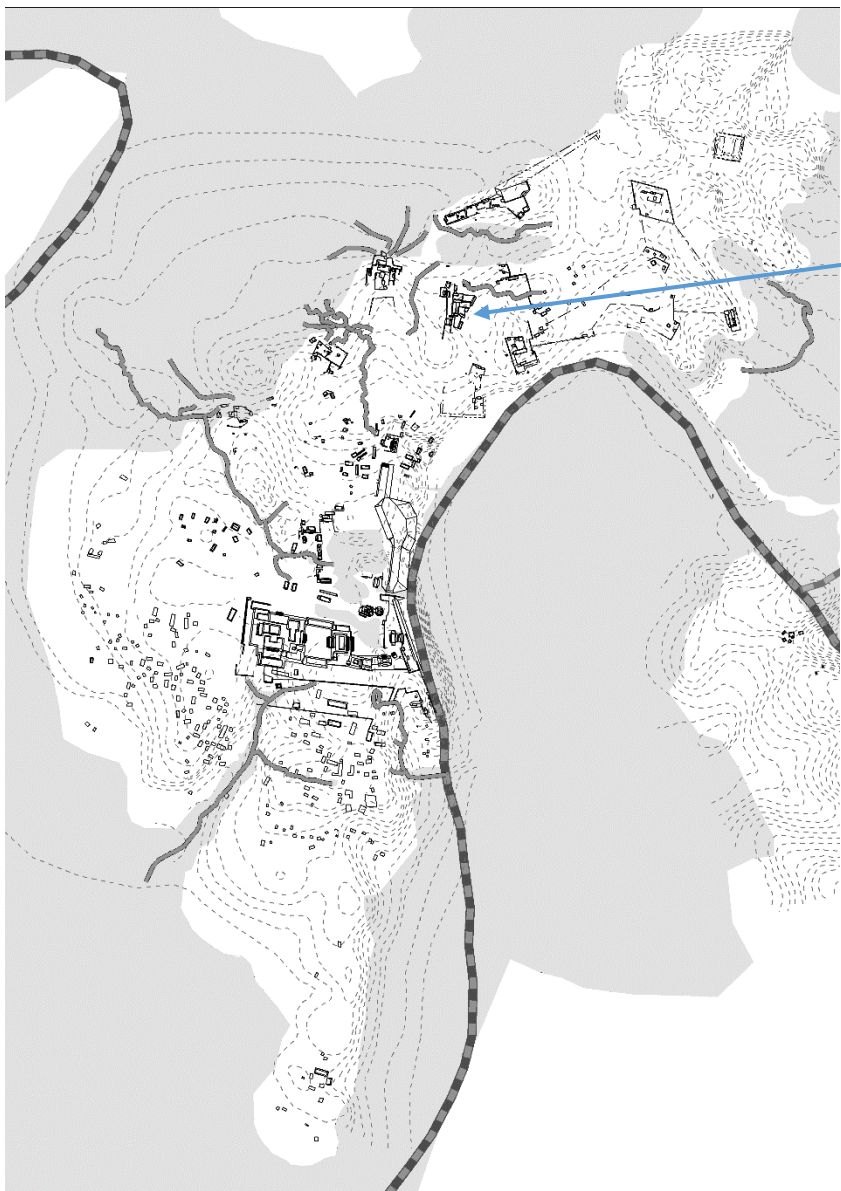
An architectural feature: a waste dump associated with each of the structures

Cancuén's Ballcourt

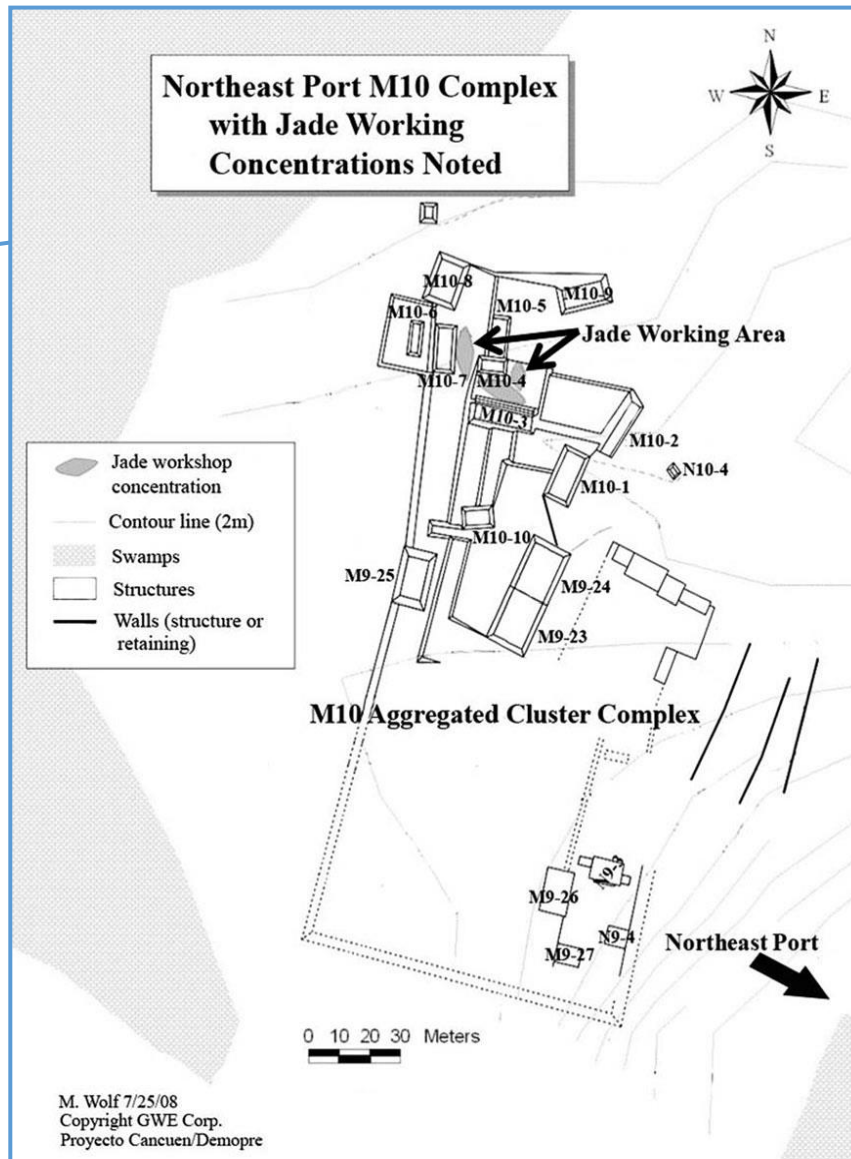


Massacre of elite populations





Map : M. Wolf



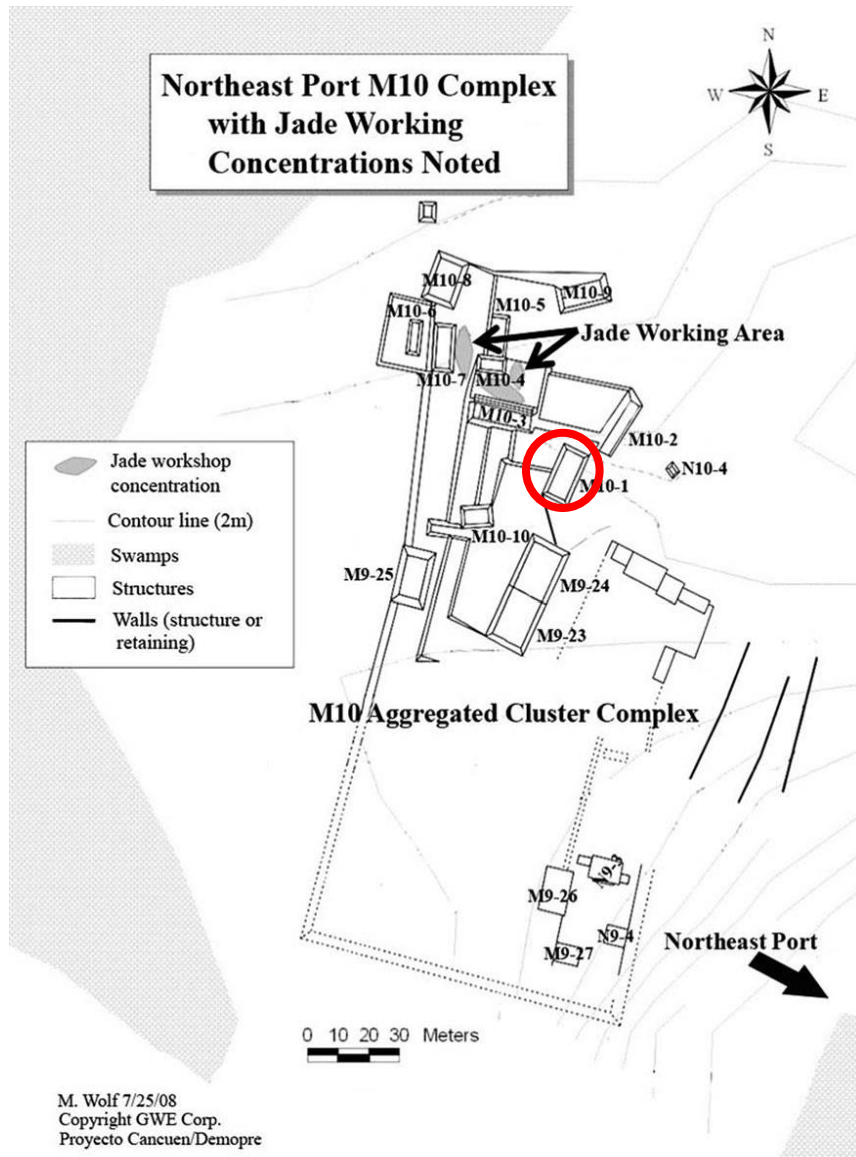
Source : Andrieu et al. 2014
DOI : 10.1017/S0956536114000108

The Cancuén's jade workshop



C. Andrieu ©





Simple platform: modest domestic structure, located near the jade workshop

Ritual deposit of the structure, composed of 392 obsidian blades divided into 9 strata, each separated by a layer of earth

Layer n°1



Layer n°4



Layer n°7



Layer n°2



Layer n°5



Layer n°8



Layer n°3



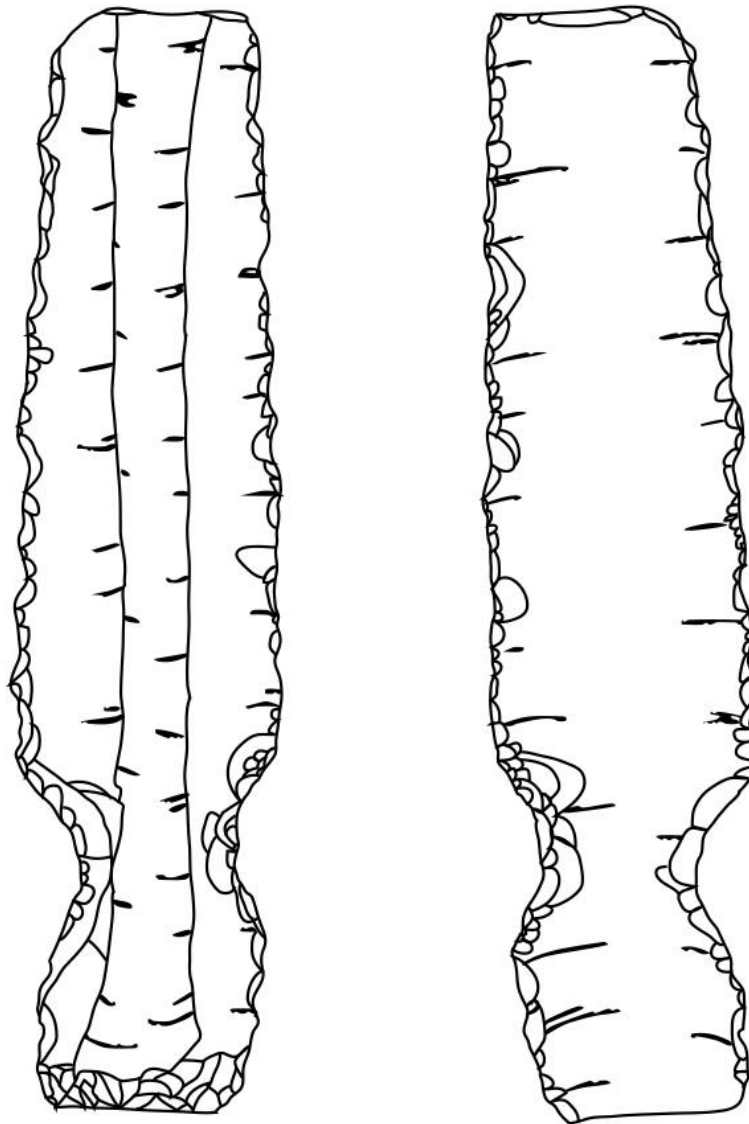
Layer n°6



Layer n°9



Notched blade and intensive use-wear



Total number of blades contained in the ritual deposit : 392

Total number of blades analyzed : 106 (27,1%)

Including the number of cracked blade : 31 (7,9%)

Layer	1	2	3	4	5	6	7	8	9
total number of blades	62	24	25	10	12	13	47	37	162
including the number of cracked blades	-	1 (4,2%)	2 (8%)	1 (10%)	-	1 (7,7%)	7 (14,9%)	3 (8,1%)	13 (8%)
number of blades analyzed	16 (25,8%)	6 (25%)	7 (28%)	4 (40%)	4 (33,3%)	4 (30,8%)	12 (25,5%)	11 (29,7%)	42 (25,9%)

1st layer



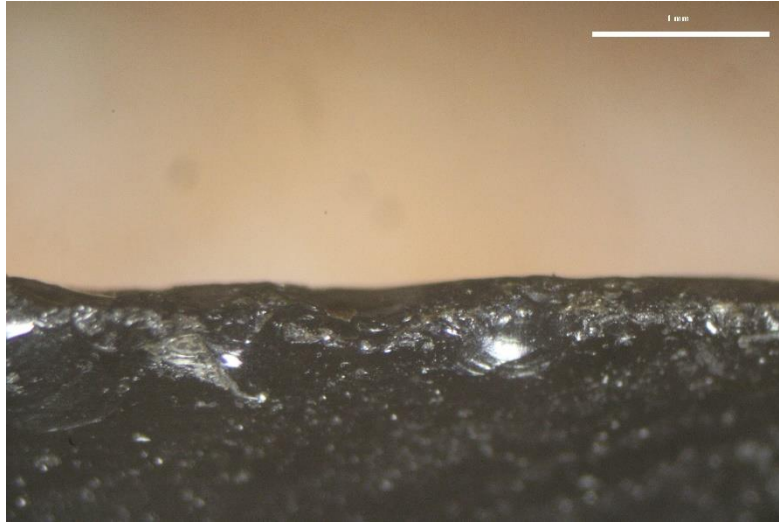
3rd layer



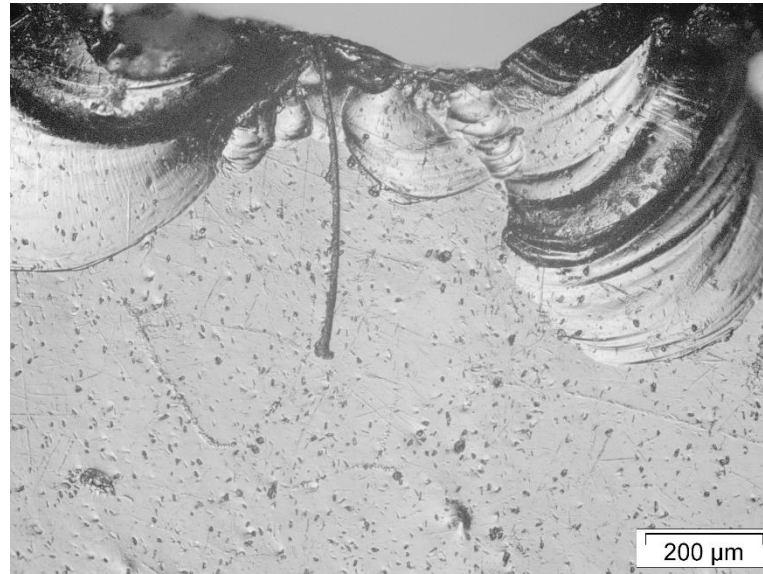
8th layer



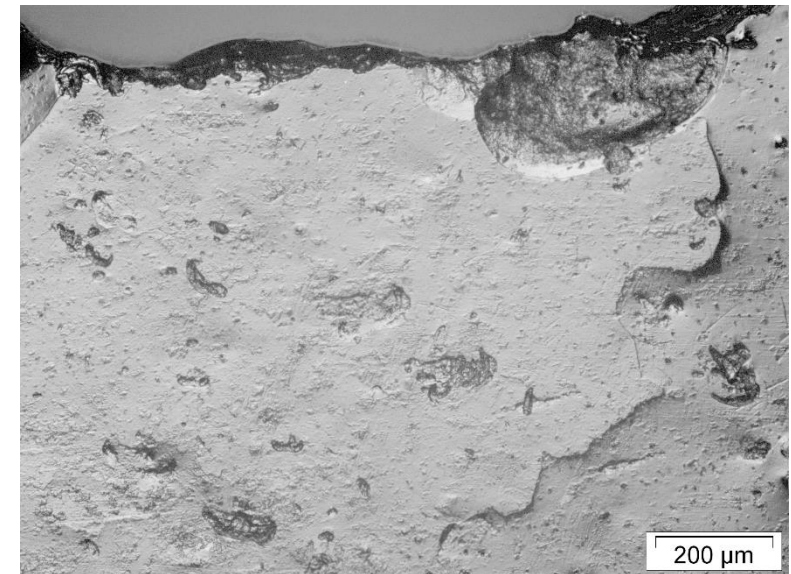
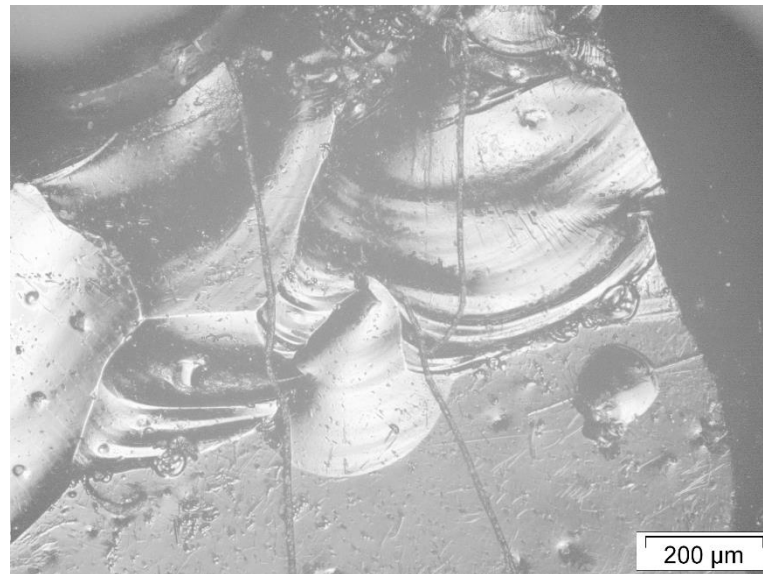
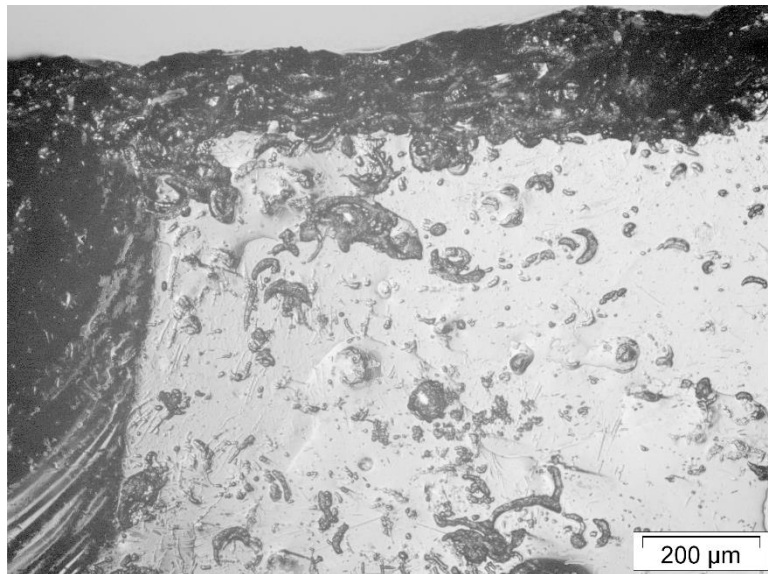
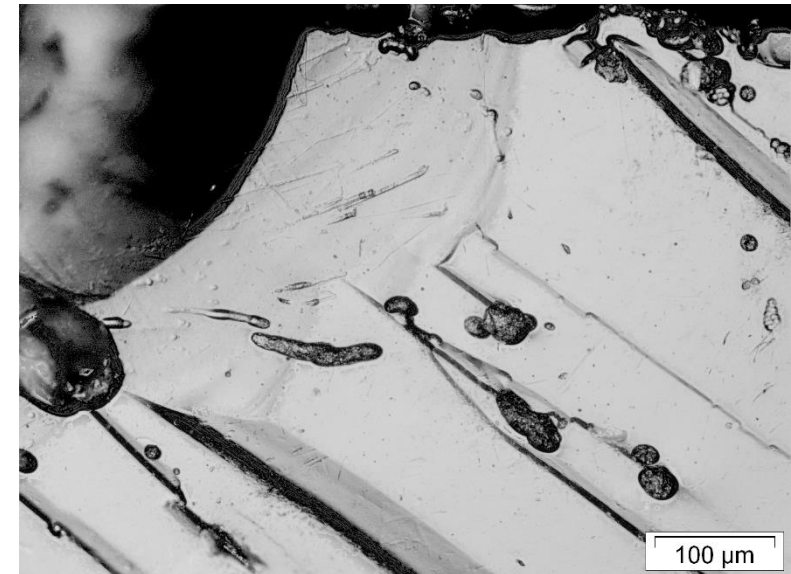
Rounded edge

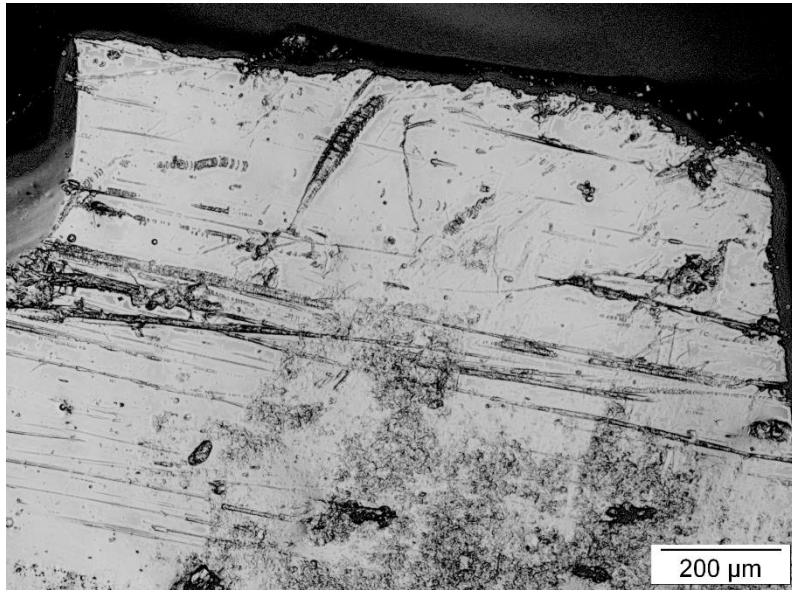
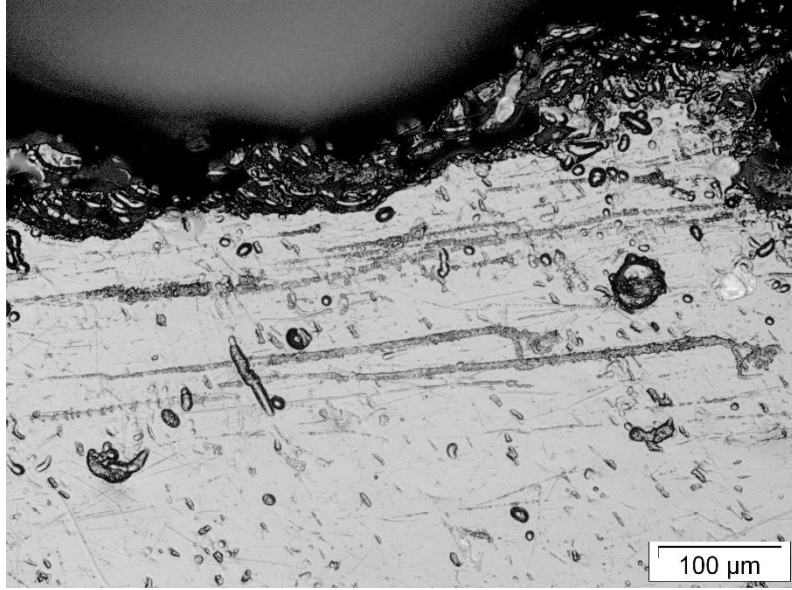


Edge-damage



Polish

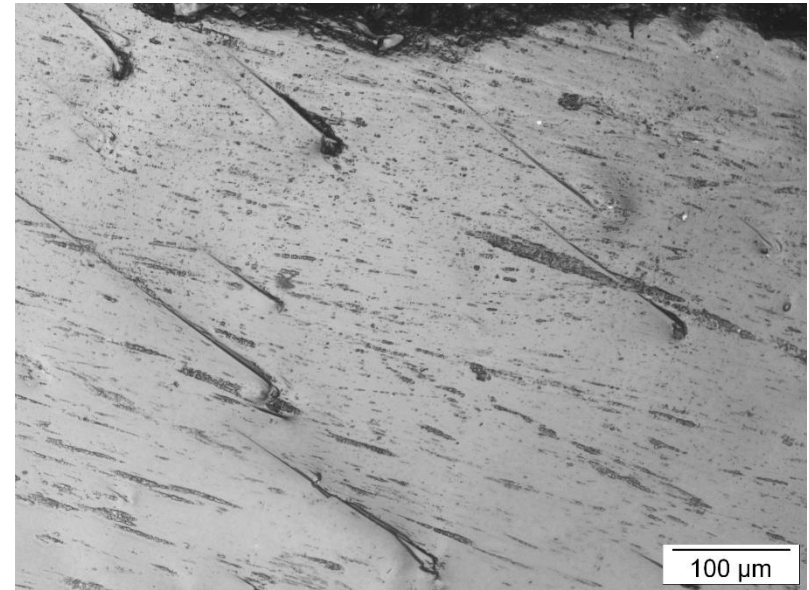
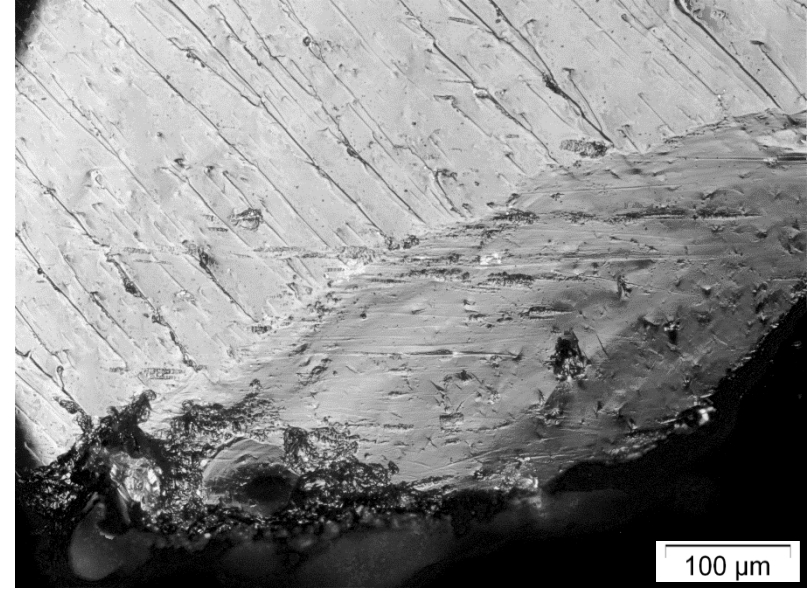




ARCHAEOLOGICAL

EXPERIMENTAL

WOOD WORK



Thermal shock (n=16)

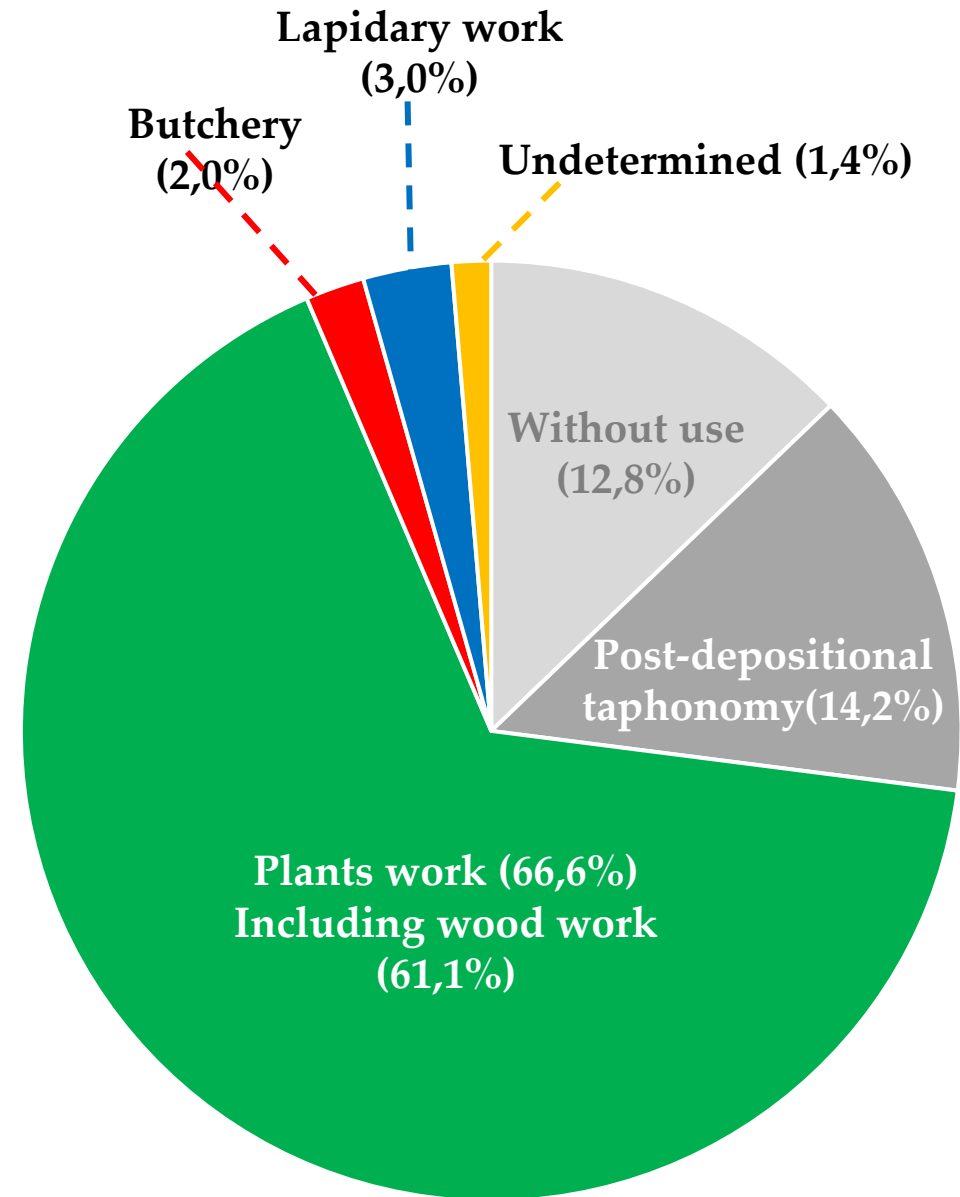
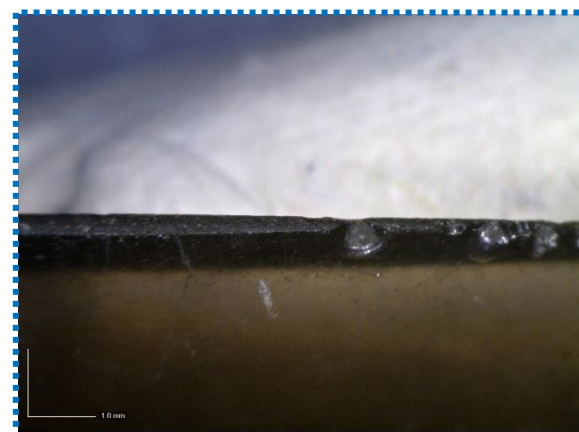
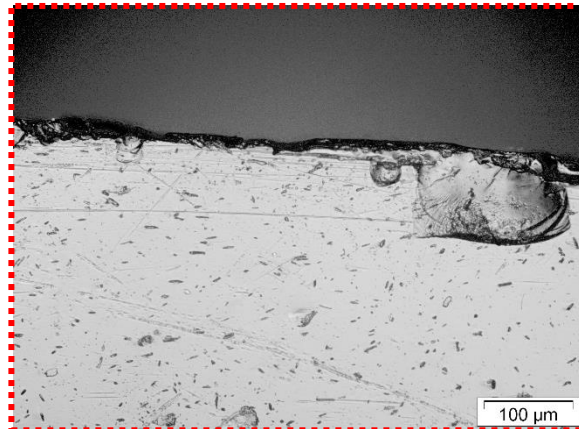
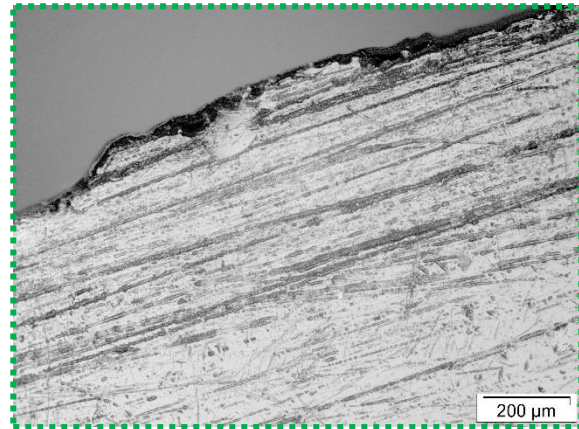
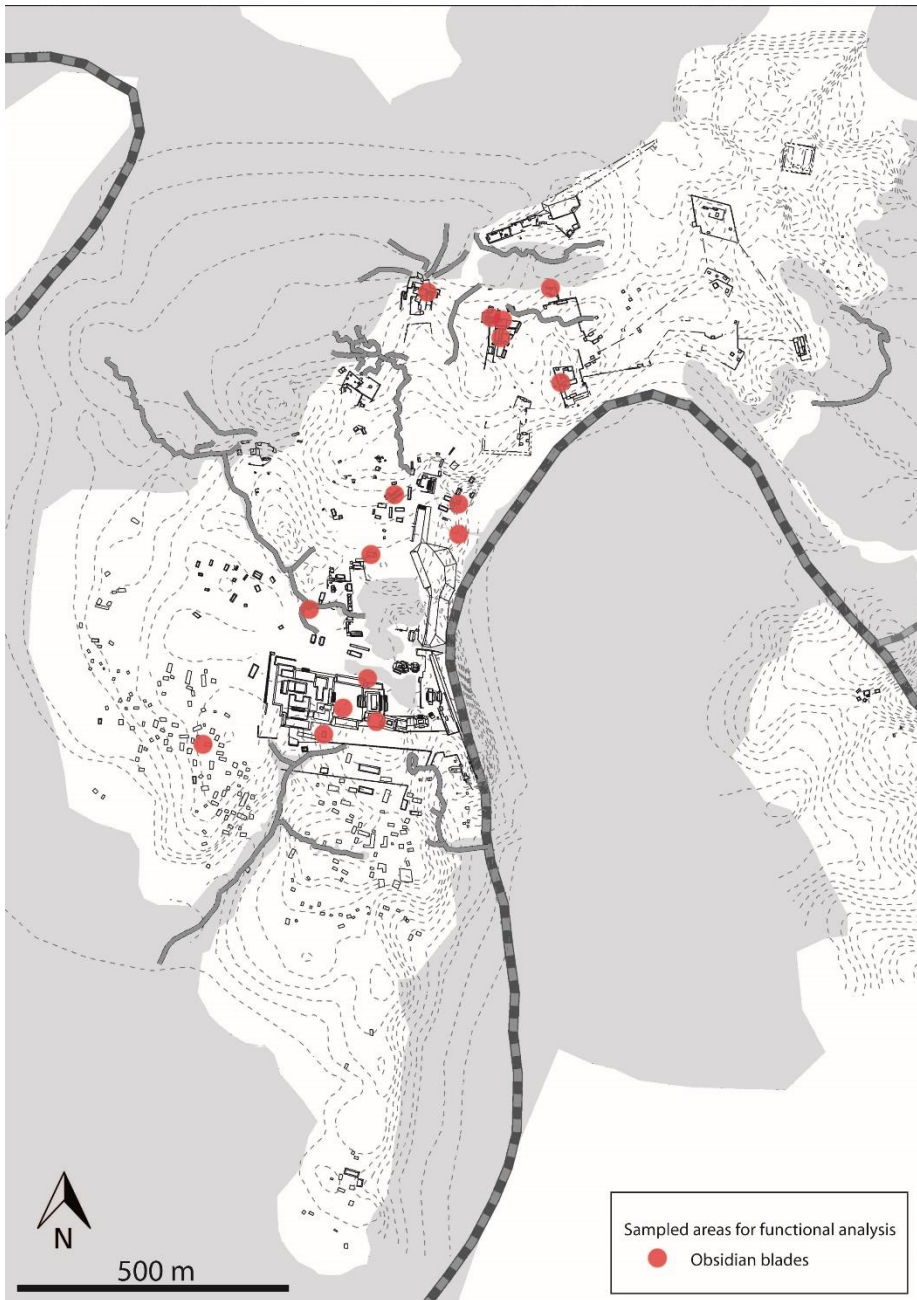


Fracturation (n=12)



Cracking (n=3)







Bishop Diego de Landa

“Metían con que cortarse o sacarse sangre de las orejas y la herramienta para labrar los negros dioses y con estos aderezos se encerraban en la casilla los chaces, el sacerdote y el oficial y comenzaban su labor de dioses cortándose a menudo las orejas y untando con la sangre aquellos demonios y quemándoles su incienso y así perseveraban hasta acabar, dándoles (entonces) de comer”

Diego de Landa, 1566

Proyecto de Cancún ©

Kan Ma'ax, the last king of Cancún, was buried with more than 1 200 preformed fragments and 52 obsidian nuclei

The action of producing certain goods was the object of great social and religious standing



Functional analysis:

An analytical tool which is still little exploited in the study of the ancient Maya

It is possible:

- To highlight activities involving perishable materials
 - To discuss the value of these craft activities

By developing this approach, it will be possible to expand our understanding of the activities of the Maya cities and the socio-economic organization

THANKS FOR YOU ATTENTION !!



