



**HAL**  
open science

## Theia : High precision differential astrometry for exoplanets and dark matter

Manon Lizzana, Fabien Malbet, Fabrice Pancher, Thierry Lepine, Alain Leger

### ► To cite this version:

Manon Lizzana, Fabien Malbet, Fabrice Pancher, Thierry Lepine, Alain Leger. Theia : High precision differential astrometry for exoplanets and dark matter. Exosystems IV, Jan 2024, Lyon, France. hal-04474369

**HAL Id: hal-04474369**

**<https://hal.science/hal-04474369>**

Submitted on 23 Feb 2024

**HAL** is a multi-disciplinary open access archive for the deposit and dissemination of scientific research documents, whether they are published or not. The documents may come from teaching and research institutions in France or abroad, or from public or private research centers.

L'archive ouverte pluridisciplinaire **HAL**, est destinée au dépôt et à la diffusion de documents scientifiques de niveau recherche, publiés ou non, émanant des établissements d'enseignement et de recherche français ou étrangers, des laboratoires publics ou privés.



# Theia : High precision differential astrometry for exoplanets and dark matter

Manon Lizzana (1,2,3), Fabien Malbet (1), Fabrice Pancher (1), Thierry Lepine (4), Alain Leger (5)

## Scientific objectives :

- The goal of Theia is to **explore planetary systems** in the Sun's vicinity and investigate the nature of the **dark matter in the Milky way**
- We focus here on **rocky exoplanets in the habitable zone** detection because it's the most demanding aspect of the Theia mission

$$\text{Astrometric signal : } A = 3\mu\text{as} \times \frac{M_{\text{Planet}}}{M_{\text{Earth}}} \times \left(\frac{M_{\text{Star}}}{M_{\text{Sun}}}\right)^{-1} \times \frac{R}{\text{IAU}} \times \left(\frac{D}{\text{1pc}}\right)^{-1}$$

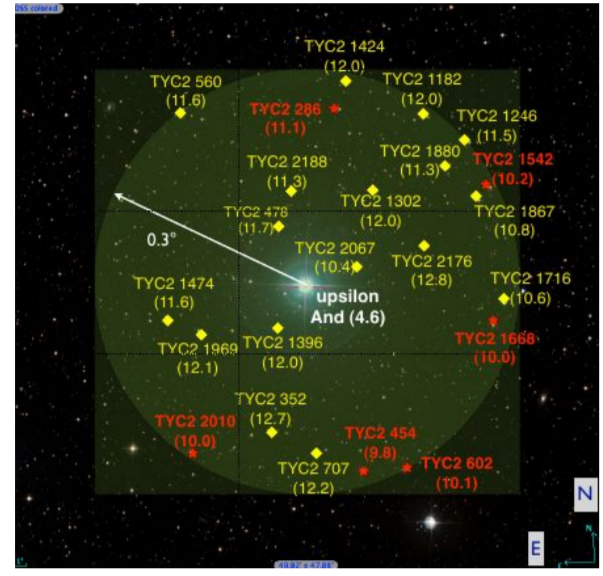


Fig 2 : example of field of view (target star at the center and reference stars all around)

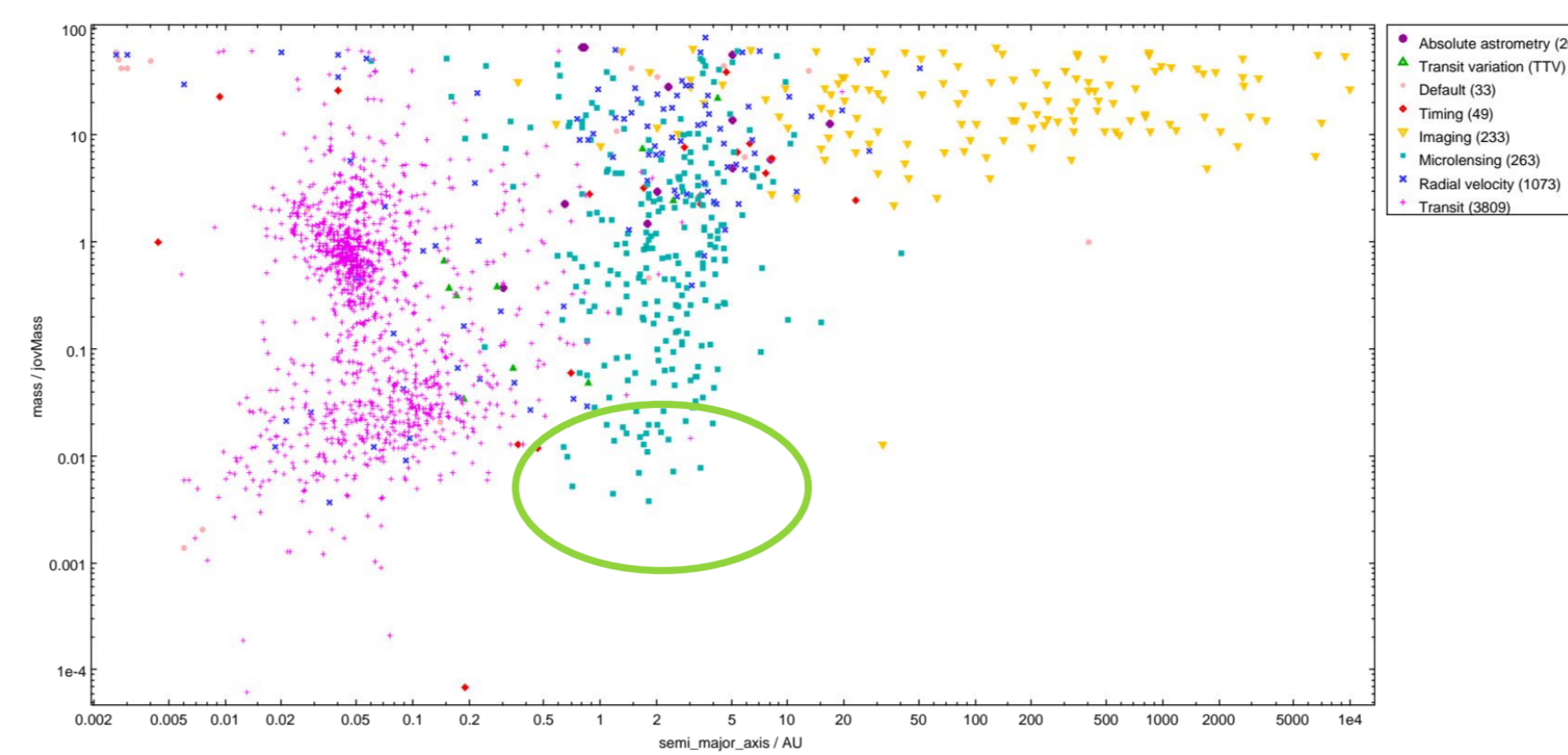


Fig 1 : Detected exoplanets (12/2023 Exoplanets.eu)

## Key points of the poster :

- The reflex motion of the star produced by an Earth like planet orbiting a sun like star 10pc from us is **0.3 μas corresponding to 5e-6 px** in the case of Theia mission (see Theia's characteristics in the right panel)
- This precision can only be reached by **long exposure on pointed targets using relative astrometry**, contrary to Gaia which performs absolute astrometry over the entire sky
- To achieve this goal, the TRL (technology readiness level) of 2 specific aspects must be improved :
  - **calibration of new detectors** with very large number of pixels → see 1, 2
  - **telescope stability** or its monitoring by **calibrating the field distortion thanks to the stars in the field of view** → see 3

## Theia mission :

- Space telescope
- Diffraction-limited telescope
- 0.7 m in diameter
- A large field of view (0.5°)
- A fine resolution (0.3 μas)
- Stability monitored in real time → see 3
- Wavelength : visible

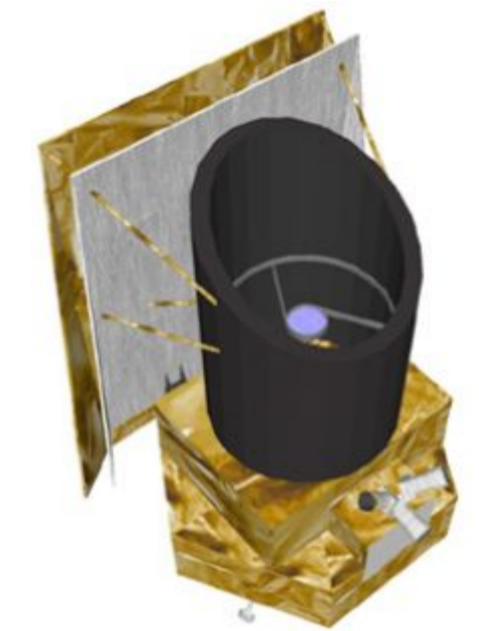


Fig 3 : Theia telescope design ( Malbet et al. 2021)

## 1 - Characterize an adequate CMOS detector with an integrating sphere

New technologies supply **large detectors made of small pixels** (4.4 μm), that allow to observe small movements in a large field of view

To cover the whole field of view of Theia 30 000 x 30 000 px are needed, but for now experiments are carried out with a 8320 x 5436 px = 46 Mpx, see fig 4. Pyxalis company plans to make 220 Mpx detectors, meaning that 4 of them will cover the whole field of view.

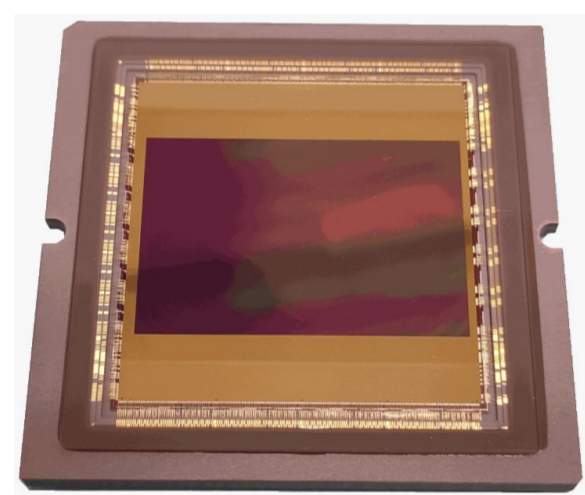


Fig 4 : Gigapix 4600 Pyxalis detector

## 2 - Interferometric calibration of the pixels centroid position (blue beam)

On fig 5, the blue beams originate from fibers which illuminate the detector with Young's fringe. Each pixel sees a modulation of the light when the phase modulators are in action. This allows to calculate the **exact positions of pixels centroids**.

Previous work has shown that this is possible with small detector matrices (Crouzier et al. 2016, A&A 595, A108), see fig 6. The goal is now to check the performances and validate this method with the new very large detectors.

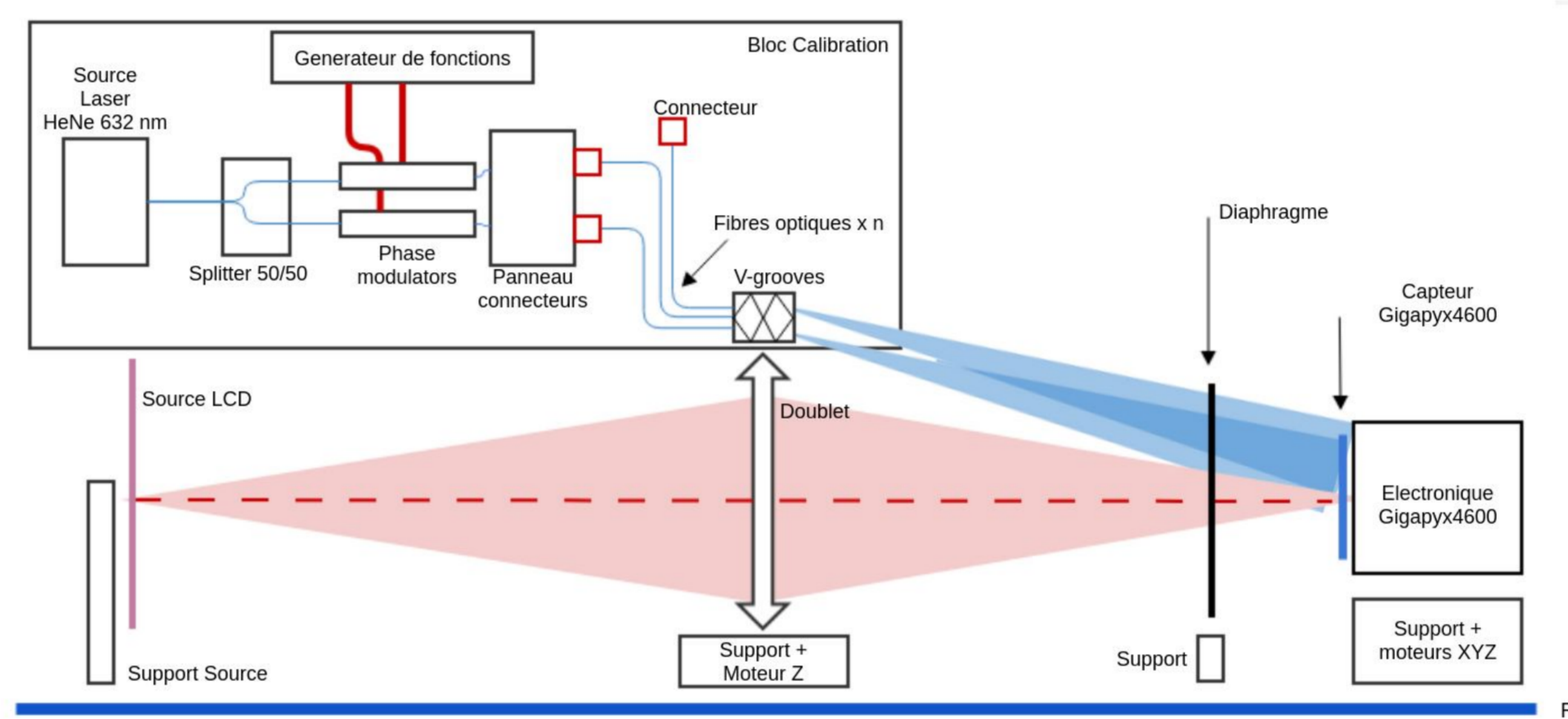


Fig 5 : test bed design for interferometric and distortion calibrations

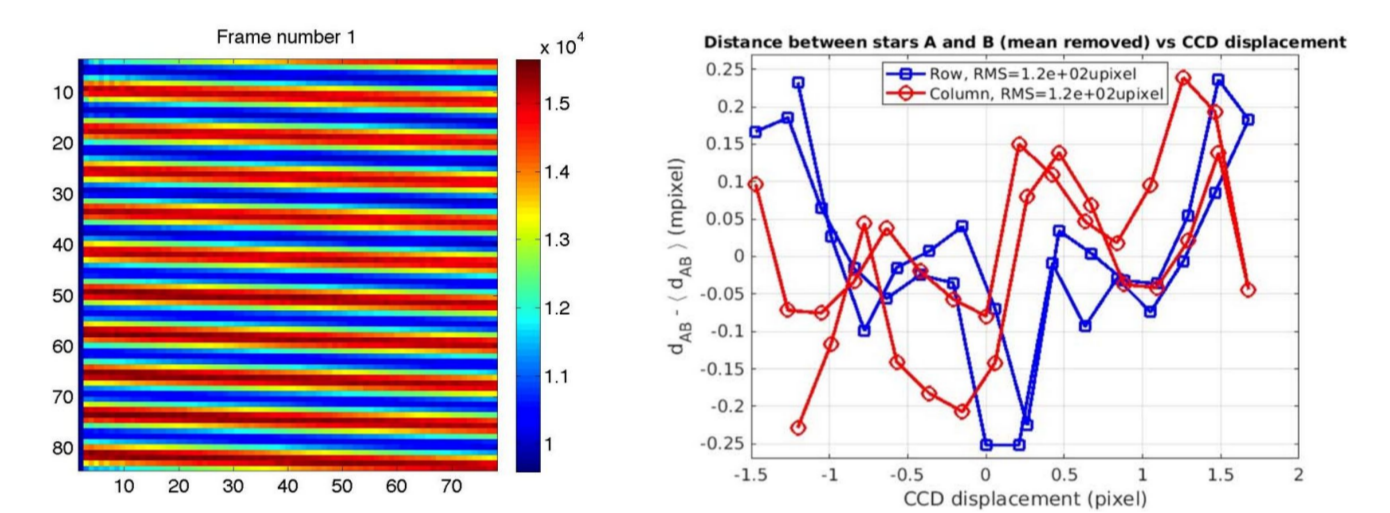


Fig 6 : Illustration of interferometric calibration with Young fringes (Crouzier et al. 2016, Shao et al. 2023)

Last results :

- 6e-5 px (Crouzier et al. 2016)
- 3e-5 px (Shao et al. 2023)

## 3 - Calibration of optical distortion with fictive stars (red beam)

### Goal of this study :

We want to show that a **polynomial model** is able to calibrate the telescope distortion with a precision smaller than **5e-6 px** that allows us to detect an Earth like planet

Recent work on telescope stability (Malbet et al. 2022, SPIE 12180, 1F) has shown that the **reference stars in the field of the telescope can be used as metrology sources** in order to compute the distortion function

We want to show that this procedure works in laboratory with simulated stars (red beam)

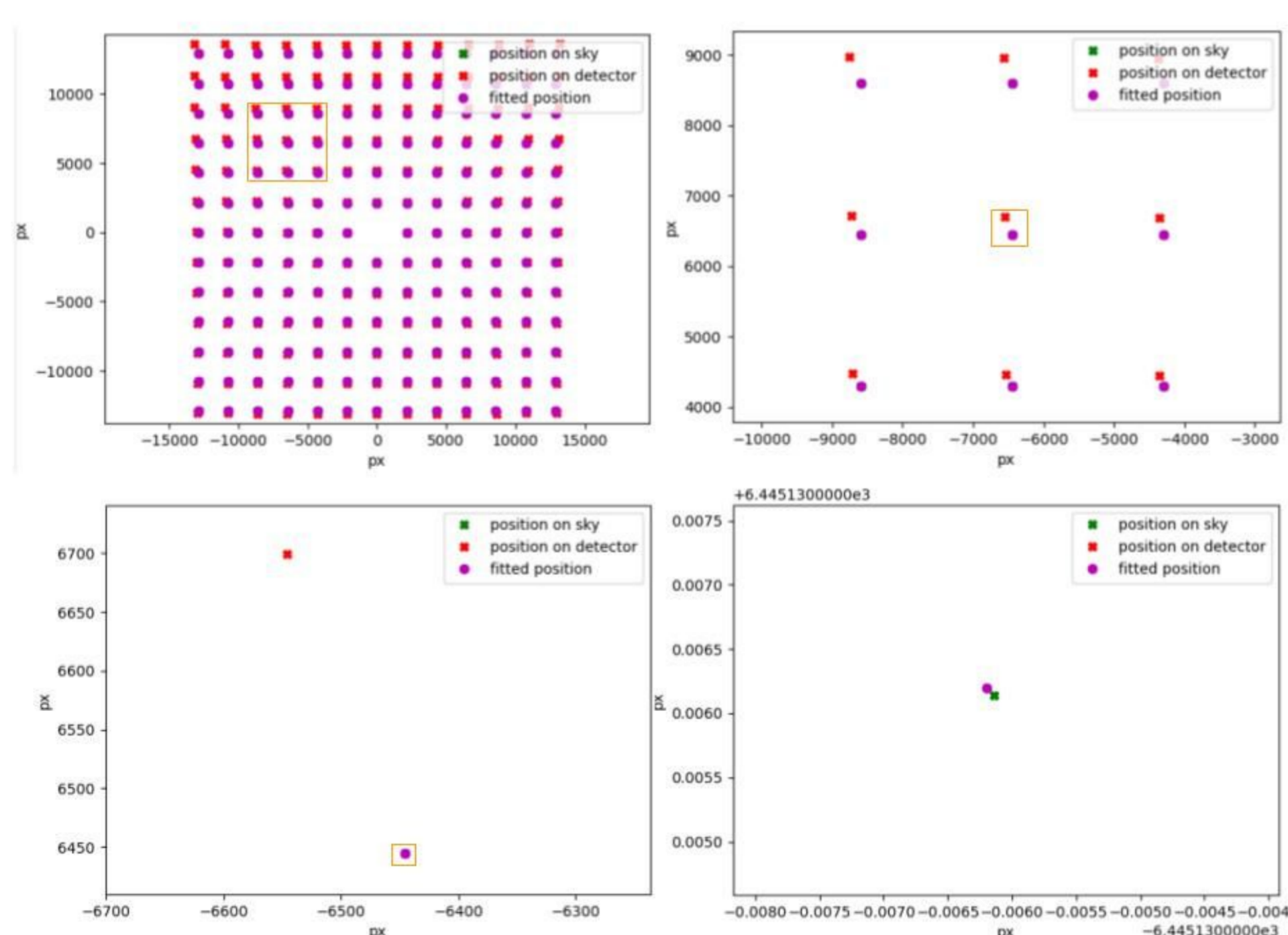


Fig 8 : Example of distortion calibration with polynomials

### First results :

A precision of 5e-6 px can be reached with about 100 stars and an 8th order polynomial, if the M2 tilt is below 7e-5" for that exposure , see fig 9

### Ongoing work :

Implement the errors due to Gaia Catalog, photon noise ... and test the robustness of the results

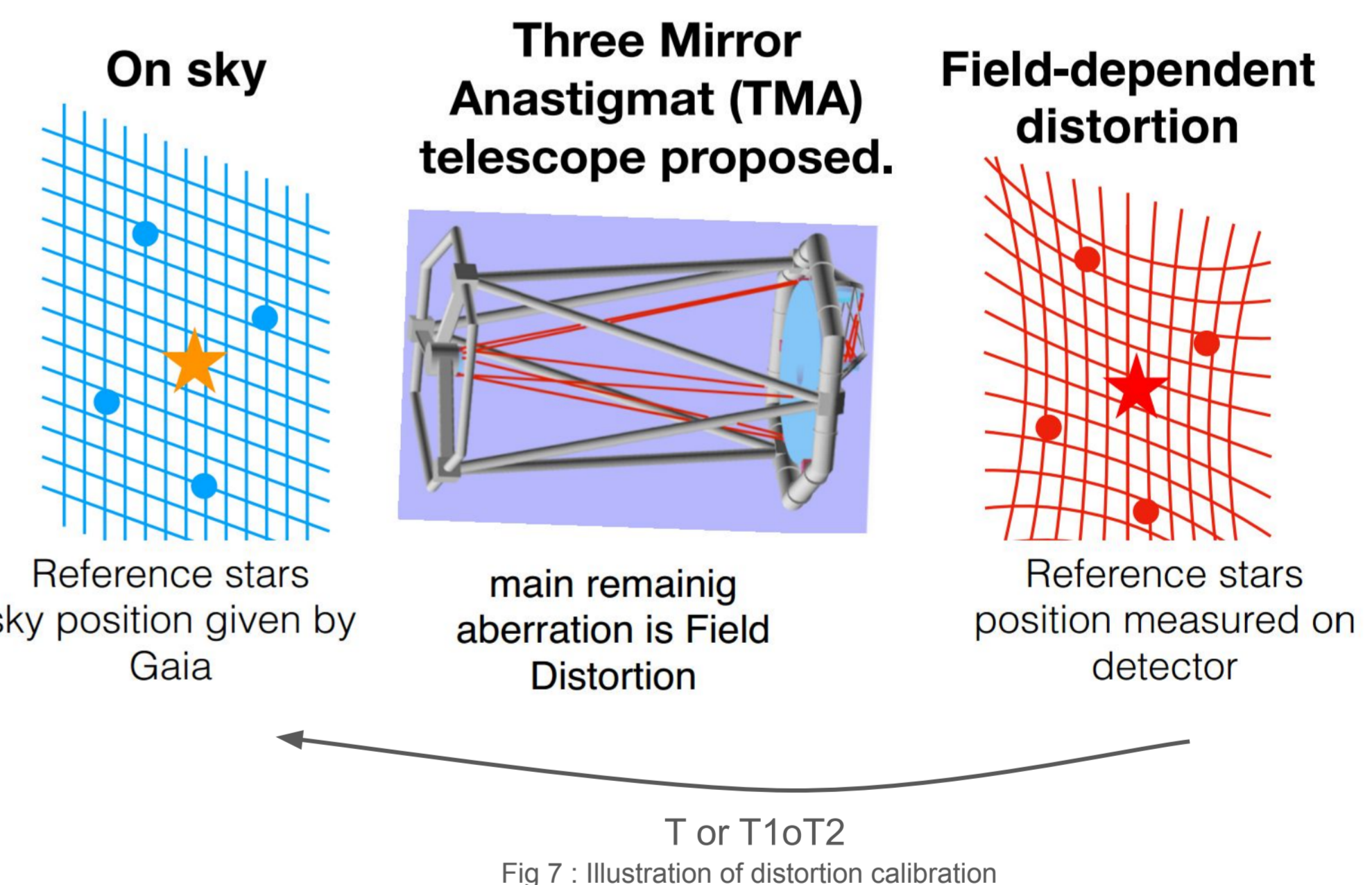


Fig 7 : Illustration of distortion calibration

### Main idea of the simulation :

- Simulate a star field
- Calculate the position of the stars on the detector (thanks to optical computing)
- Fit a polynomial function (T or T1oT2) between the star position on the sky and on the detector, see fig 7,8

### Procedure during the space mission :

- Fit the polynomial on reference stars using the Gaia catalog
- Apply the polynomial to the target star position on the detector to estimate the position on sky
- Measure the movement of the target star relative to reference stars

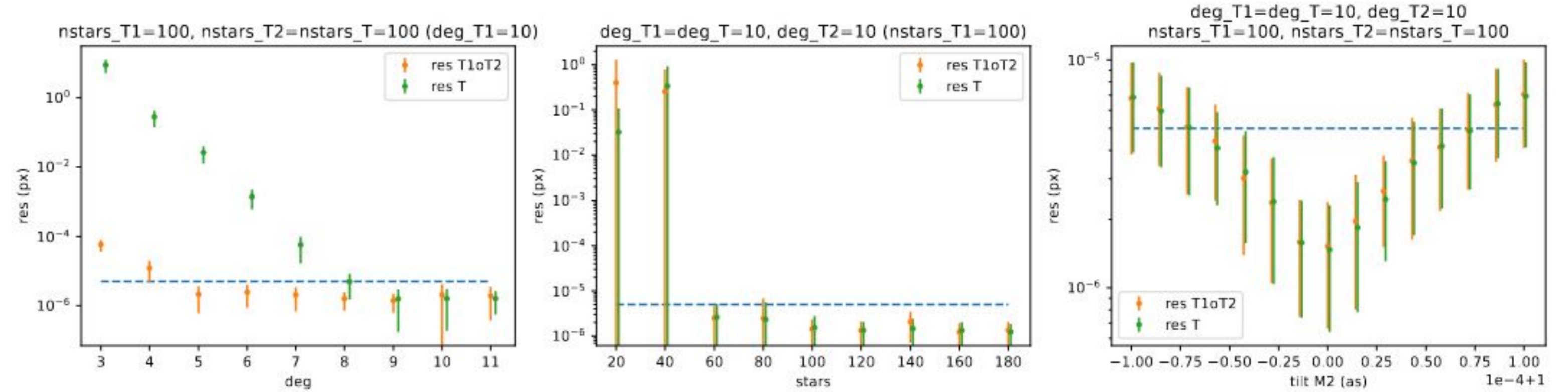


Fig 9 : Evolution of residuals relative to the degree of polynomials, the number of stars and tilt of M2