



HAL
open science

Characterization of Multilayer Structures by Acoustic Microscopy

Youness Ezziani, Pooyan Manoochehrnia, Mounsif Ech-Cherif El-Kettani, Damien Leduc, Pierre Marechal, Mathieu Ducouso, Nicolas Cuvillier

► **To cite this version:**

Youness Ezziani, Pooyan Manoochehrnia, Mounsif Ech-Cherif El-Kettani, Damien Leduc, Pierre Marechal, et al.. Characterization of Multilayer Structures by Acoustic Microscopy. 5th International Conference on Materials Science and Engineering Technology, Feb 2024, Singapore, Singapore. hal-04472277

HAL Id: hal-04472277

<https://hal.science/hal-04472277>

Submitted on 22 Feb 2024

HAL is a multi-disciplinary open access archive for the deposit and dissemination of scientific research documents, whether they are published or not. The documents may come from teaching and research institutions in France or abroad, or from public or private research centers.

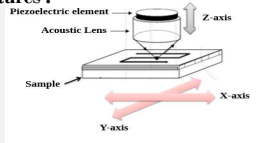
L'archive ouverte pluridisciplinaire **HAL**, est destinée au dépôt et à la diffusion de documents scientifiques de niveau recherche, publiés ou non, émanant des établissements d'enseignement et de recherche français ou étrangers, des laboratoires publics ou privés.

Characterization of Multilayer Structures by Acoustic Microscopy

Youness EZZIANI⁽¹⁾, Pooyan MANOOCHERNIA⁽¹⁾, Mounsiif ECH-CHERIF EL-KETTANI,⁽¹⁾ Damien LEDUC ⁽¹⁾, Pierre MARECHAL⁽¹⁾, Mathieu DUCOUSSO⁽²⁾, Nicolas CUVILLIER⁽²⁾,
(1) Laboratory of Waves and Complex Media (LOMC UMR 6294), Le Havre Normandy University, Le Havre, France (2) Safran Tech, 78772 Magny-les-Hameaux, France

Introduction

-Ultrasonic acoustic methods have the advantage of being non-intrusive with respect to the materials tested, rapid and inexpensive implementation.
-Acoustic microscopy: characterization and imaging with high resolution (10ns-100ds MHz) for a wide range of materials and structures.

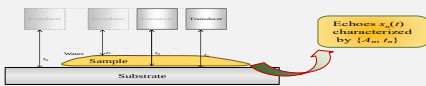


Trilayer Titanium/Epoxy/Composite



Material	Sample 1 Thickness (mm)	Sample 2 Thickness (mm)
TA6V	0.994	0.981
Epoxy	estimated at 0.135	Estimated at 0.086
Composite	13.5	13.5

Bilayer Thin film on substrate



Contact

Mounsiif ECH-CHERIF EL-KETTANI, Pr
Head of Acoustic of Materials and Structures team(AMS), LOMC UMR 6294
75 RUE BELLOT, 76600 LE HAVRE
echchem@univ-lehavre.fr
+33649283051

METHODS AND MATERIALS

Trilayer structure: epoxy film thickness and adhesion quality??

-A-scan signal from two trilayer samples (Titanium/Epoxy/Composite), 50 MHz plane transducer
-Quantification with X-scan imaging

Bilayer structure: Estimation of local material geometric & elastic parameters??

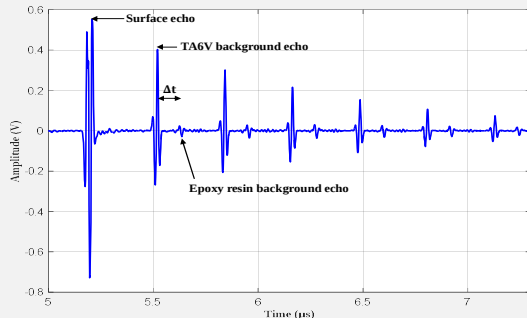
-85µm thick Resin-Epoxy
-50 MHz plane transducer
-Model: Debye Series Model (DSM) formalism:

$$R_g = R_{12} + \frac{T_{12}\rho_{23}T_{21}}{1 - R_{21}\rho_{23}}$$

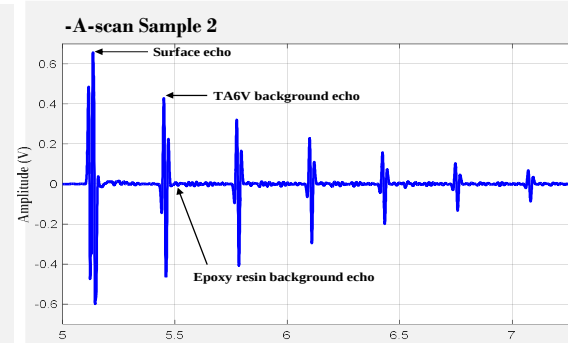
$$s(t) = \left\{ A_{ref} e^{-\frac{1}{2}\left(\frac{t-t_0}{\sigma_t}\right)^2} \cos(2\pi f_0(t-t_0)) \right\} * FT^{-1} \{ R_g \}$$

RESULTS for the Trilayer

-A-scan Sample 1

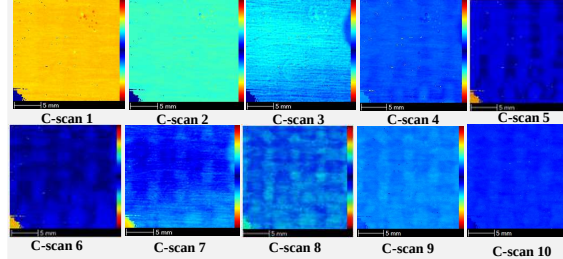


$$e_{Epoxy} = \frac{C_{L-Epoxy} \times \Delta t_{corr}}{2} \cong 0.1357 \text{ mm}$$



$$e_{Epoxy} = \frac{C_{L-Epoxy} \times \Delta t_{corr}}{2} \cong 0.069 \text{ mm}$$

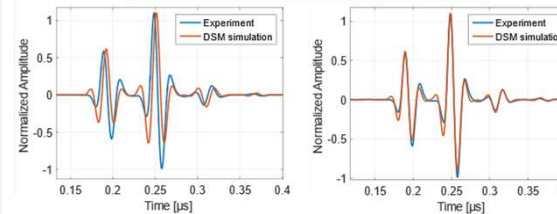
-X-scan of sample 2



Size of the X-scan gate = 20 ns → d(Epoxy)=23 µm, d(Composite) = 29.2 µm

Epoxy medium : 3 Gates (C-scan 1 => C-scan 3) → epoxy = 3*23 = 69 µm

RESULTS for the Bilayer

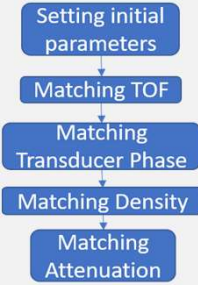


Initial model parameters:

- $C_L=2500$ [m/s]
- $\rho=1300$ [kg/m³]
- $Th=85$ [µm]
- $\delta=1.5e^{-5}$
- $\alpha=3.5e^{-8}$ [Np/(m.Hz)]

Matched model parameters:

- $C_L=2500*1.07$ [m/s]
- $\rho=1300*0.75$ [kg/m³]
- $Th=85*0.85*0.93$ [µm]
- $\delta=1.5e^{-2}$
- $\alpha=3.5e^{-5}$ [Np/(m.Hz)]



DISCUSSION / CONCLUSION

Trilayer samples :

-Precise determination of the thickness of the adhesive for two samples with A-scan and X-scan Imaging (135 µm for Sample 1, 69 µm for sample 2)
-Sample 1 (135 µm epoxy): High background Epoxy amplitude, and composite is less visible and on few windows of the X-scan.

-Sample 2 (69 µm epoxy): low background Epoxy amplitude, and composite clearly visible on several windows of the X-scan.

the background echo amplitude of the epoxy film depends on the epoxy-composite interface and, consequently, on the adhesion quality. We can conclude that the adhesion quality of sample 2 is better than that of sample 1.

Bilayer:

-Estimation of elastic and geometric parameters of thin layer by analysis of specular insonation of thin layer using SAM

-Inverse problem algorithm used for estimation of best match between parameters