



**HAL**  
open science

## **MuscleJ2: a rebuilding of MuscleJ with new features for high-content analysis of skeletal muscle immunofluorescence slides**

Anne Danckaert, Aurélie Trignol, Guillaume Le Loher, Sébastien Loubens, Bart Staels, Hélène Duez, Spencer Shorte, Alicia Mayeuf-Louchart

### ► To cite this version:

Anne Danckaert, Aurélie Trignol, Guillaume Le Loher, Sébastien Loubens, Bart Staels, et al.. MuscleJ2: a rebuilding of MuscleJ with new features for high-content analysis of skeletal muscle immunofluorescence slides. *Skeletal Muscle*, 2023, 13 (1), pp.14. 10.1186/s13395-023-00323-1 . hal-04469440

**HAL Id: hal-04469440**

**<https://hal.science/hal-04469440>**

Submitted on 21 Feb 2024

**HAL** is a multi-disciplinary open access archive for the deposit and dissemination of scientific research documents, whether they are published or not. The documents may come from teaching and research institutions in France or abroad, or from public or private research centers.

L'archive ouverte pluridisciplinaire **HAL**, est destinée au dépôt et à la diffusion de documents scientifiques de niveau recherche, publiés ou non, émanant des établissements d'enseignement et de recherche français ou étrangers, des laboratoires publics ou privés.



Distributed under a Creative Commons Attribution 4.0 International License

SOFTWARE

Open Access



# MuscleJ2: a rebuilding of MuscleJ with new features for high-content analysis of skeletal muscle immunofluorescence slides

Anne Danckaert<sup>1\*</sup>, Aurélie Trignol<sup>2</sup>, Guillaume Le Loher<sup>1,3</sup>, Sébastien Loubens<sup>4,5</sup>, Bart Staels<sup>4</sup>, Hélène Duez<sup>4</sup>, Spencer L. Shorte<sup>1</sup> and Alicia Mayeuf-Louchart<sup>4\*</sup>

## Abstract

Histological analysis of skeletal muscle is of major interest for understanding its behavior in different pathophysiological conditions, such as the response to different environments or myopathies. In this context, many software programs have been developed to perform automated high-content analysis. We created MuscleJ, a macro that runs in ImageJ/Fiji on batches of images. MuscleJ is a multianalysis tool that initially allows the analysis of muscle fibers, capillaries, and satellite cells. Since its creation, it has been used in many studies, and we have further developed the software and added new features, which are presented in this article. We converted the macro into a Java-language plugin with an improved user interface. MuscleJ2 provides quantitative analysis of fibrosis, vascularization, and cell phenotype in whole muscle sections. It also performs analysis of the peri-myonuclei, the individual capillaries, and any staining in the muscle fibers, providing accurate quantification within regional sublocalizations of the fiber. A multicartography option allows users to visualize multiple results simultaneously. The plugin is freely available to the muscle science community.

**Keywords** Histology, Muscle fiber morphology, Centro- and perinuclei, Fiber typing, Vascularization, Phenotype cartography, Extracellular matrix, Interstitial cells, Sarcolemmal staining

## Main

The histological study of skeletal muscle is an efficient way to understand its pathophysiological state, especially in the context of myopathies, aging, or responses to exercise and regeneration. Histological analysis is particularly useful in establishing a diagnosis and understanding the progression of various pathological conditions or for evaluating potential therapeutic approaches. Different parameters of skeletal muscle sections are examined to generate quantitative measurements of specific readouts. For example, the fiber cross-sectional area (CSA) and Feret diameter of muscle fibers can be used to evaluate skeletal muscle atrophy/hypertrophy. However, the amount of histological detail that can be obtained from a skeletal muscle tissue slide is large and often underexploited, mostly due to the subjectivity and massive time

\*Correspondence:

Anne Danckaert

anne.danckaert@pasteur.fr

Alicia Mayeuf-Louchart

alicia.mayeuf-louchart@inserm.fr

<sup>1</sup> UTechS Photonic BiImaging/C2RT, Institut Pasteur, Université Paris Cité, 75015 Paris, France

<sup>2</sup> French Armed Forces Biomedical Research Institute - IRBA, Brétigny-sur-Orge, France

<sup>3</sup> École Centrale d'Electronique (ECE), Paris, France

<sup>4</sup> CHU Lille, INSERM, Institut Pasteur de Lille, Univ. Lille, U1011-EGID, Lille 59000, France

<sup>5</sup> Service Neuropédiatrie, CHU Lille, 59000 Lille, France



© The Author(s) 2023. **Open Access** This article is licensed under a Creative Commons Attribution 4.0 International License, which permits use, sharing, adaptation, distribution and reproduction in any medium or format, as long as you give appropriate credit to the original author(s) and the source, provide a link to the Creative Commons licence, and indicate if changes were made. The images or other third party material in this article are included in the article's Creative Commons licence, unless indicated otherwise in a credit line to the material. If material is not included in the article's Creative Commons licence and your intended use is not permitted by statutory regulation or exceeds the permitted use, you will need to obtain permission directly from the copyright holder. To view a copy of this licence, visit <http://creativecommons.org/licenses/by/4.0/>. The Creative Commons Public Domain Dedication waiver (<http://creativecommons.org/publicdomain/zero/1.0/>) applies to the data made available in this article, unless otherwise stated in a credit line to the data.

consumption of manual feature assessment. Therefore, several software programs (Sup. Table 1) have been developed to automate the estimation of these different parameters, including MuscleJ [1], an automated ImageJ macro that we created to quantify multiple types of histological data from muscle immunofluorescence slide images.

Initially, MuscleJ was able to automatically extract the fiber CSA and Feret diameters, the number of centronucleated fibers, the number of centronuclei, the number of satellite cells and capillaries (initially called “vessels”) per fiber, and the fiber typing [1]. MuscleJ begins its analysis with fiber segmentation, which then defines four regions of interest (ROIs): the ROI fiber (ROI<sup>F</sup>), the ROI centronucleated fibers (ROI<sup>CNF</sup>), the ROI satellite cells (ROI<sup>SC</sup>), and the ROI vessels (ROI<sup>V</sup>). Specific staining is then quantified, and the results are automatically stored in results’ files. This automated process enables the high-content analysis of raw immunofluorescence image batches. Since its development, MuscleJ has been used in many studies. However, user requests prompted us to implement additional functions, which we have bundled in a new plugin named MuscleJ2, which enables faster analysis.

Along with a new interface, additional extracted features include the quantification of peripheral myonuclei, the evaluation of vascularization, and the characterization of specific cells anywhere in skeletal muscle. We also quantify the fluorescence intensity of any immunolabeling within muscle fibers and have made it possible to analyze this staining in multiple ROIs. A fifth ROI corresponding to the region bordering the muscle fiber membrane was also added. Another new feature is the ability to quantify any staining of extracellular matrix (ECM) components, such as different types of collagen or laminin. We have improved the sensitivity of the software for different quantification workflows and added numerous new measurements to the table of results. In MuscleJ2, users can perform multioutput analyses and multicartographies to obtain a full characterization of skeletal muscle tissue. The plugin is freely available in a publicly shared space (<https://github.com/ADanckaert/MuscleJ2/>) and will be updated regularly.

## Results

The user interface of MuscleJ2 is organized into five panels: *Sample Data*, *Data Acquisition*, *Data Analysis by Section*, *Data Analysis by Fiber*, and *Data Cartographies* (Fig. 1), which will be described in more detail below. Before starting a run on an image set, the user must organize the acquired images into different folders so that the images in a given folder have the same properties (same type of muscle, same pathophysiological state,

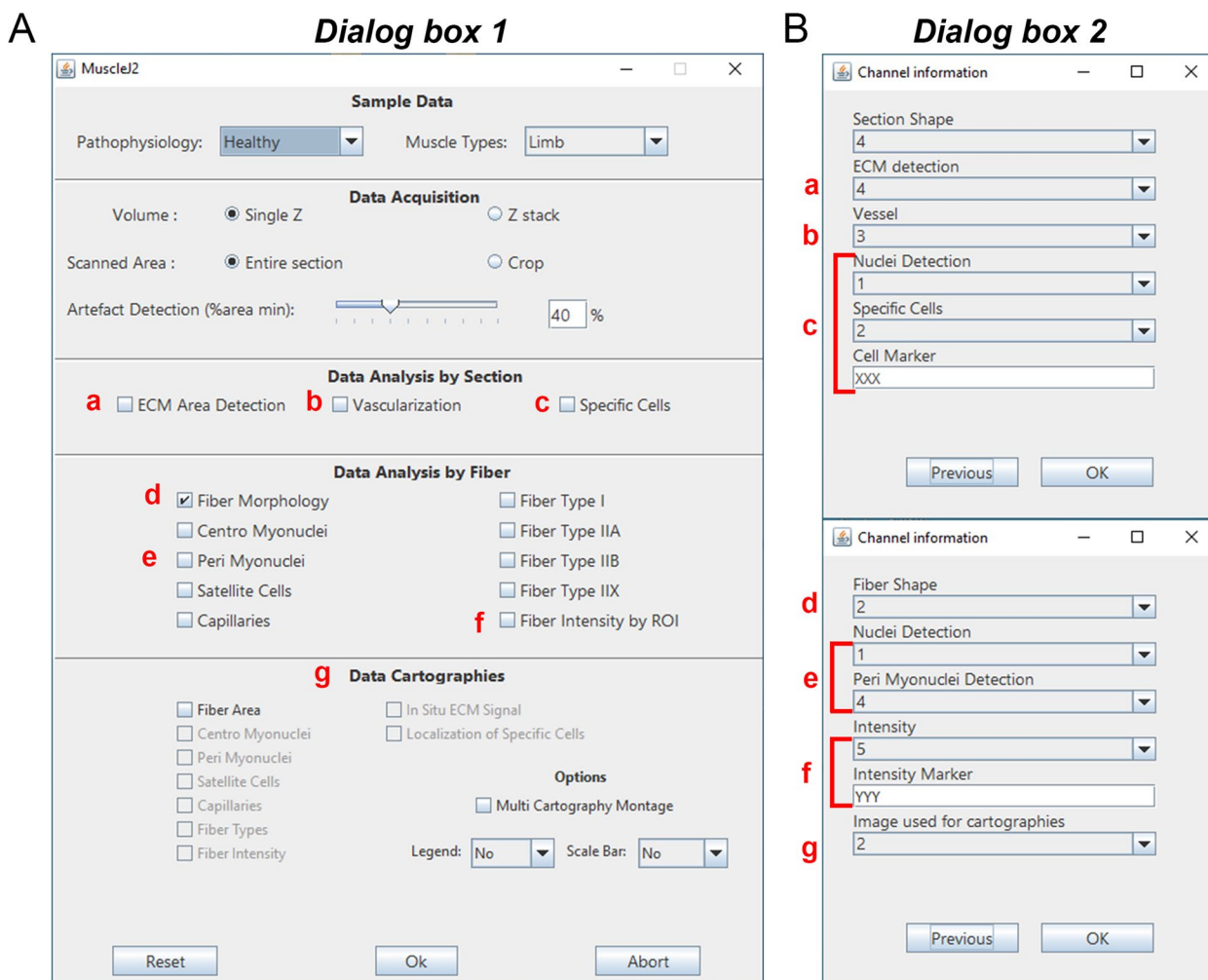
same staining, same data acquisition), as explained in the online *User Guide*.

### Sample data panel

Under physiological conditions, CSA is homogeneous across fiber regions, making it possible to use this parameter to discriminate between what can and cannot be labeled as a fiber. This is not the case when skeletal muscle is damaged, as in myopathies or after injury, where fiber size can be very heterogeneous. We have taken this point into account and have introduced an option, named *Pathophysiology*, where the user can choose between *Healthy* and *Damaged* fiber populations (Fig. 1). In damaged muscles, the heterogeneity of fiber CSA is increased, and MuscleJ2 flexibly considers a wider range of CSA measurements. The contribution of the *Damaged* option (selected in the *Pathophysiology* tab) is illustrated in Fig. S1, where the mouse *tibialis anterior* was partially injured, resulting in significant variability in fiber CSA between injured and uninjured parts. When *Healthy* is selected, MuscleJ2 excludes the largest and smallest fibers. When the *Damaged* option is selected, the range of differences in fiber CSA is much wider, and all the fibers are taken into account. This option allows the users to adapt the algorithm according to their parameters of interest. Notably, even in fusiform muscles such as the *tibialis anterior*, not all myofibers are fully aligned with the longitudinal axis of the muscle, and some have a high pennation angle [2]. This has led to the presence of non-transversal but extremely elongated fibers within cross sections (in parts of rat muscles) holding a low circularity value, and these fibers were correctly excluded by MuscleJ2. There can also be variation in CSA values along the length of the muscle [3], which would require the analysis of multiple levels of cross sections for a better assessment of myofiber size variation.

In the *Sample Data* panel, the user can inform the plugin of the anatomical origin of the sections, i.e., from limb or diaphragm muscle (Fig. 1). This option was added because of the large difference between classical hind limb muscles and the diaphragm, the latter usually being cut in a folded state (Fig. S2). When the *Diaphragm* option is selected, MuscleJ2 does not fill in holes to account for the actual surface of the tissue. As this type of skeletal muscle is studied with particular interest in pathological states [4, 5], this option now offers the possibility of analyzing it with MuscleJ2.

It is now possible to analyze a section of skeletal muscle divided into several pieces in the image, whereas in the first version of MuscleJ, only the largest region was selected. This allows the analysis of different skeletal muscle subsections grouped on the same image, which is particularly useful for muscles with different chiefs, such



**Fig. 1** Interface of the MuscleJ2 plugin. Screenshots of the plugin dialog boxes. **A** The main dialog box MuscleJ2 is divided into five sections where the user must select from a drop-down menu or check boxes. The lowercase letters in red refer to dialog box 2, in which the channels and staining information must be indicated. **B** The *Channel information* dialog box is used to indicate the channel number for each requested analysis. Depending on the analyses selected in the MuscleJ2 dialog box, the design of this dialog box changes. In the upper panel, the lowercase letters in red refer to the section *Data Analysis by Section* (a, b, c); in the lower panel, they refer to the section *Data Analysis by Fiber* (d, e, f) and *Data Cartographies* (g)

as the *quadriceps femoris* or the *gastrocnemius*, which can be separated into several parts during the cryosection preparation.

**Data acquisition panel**

We have developed an algorithm applicable to images obtained from a wider range of more recent equipment, which is why the selection of the *Acquisition system* (*Apotome/Wide field/...*) and the *File format* is no longer necessary. MuscleJ2 can easily work on different image formats (such as *.czi,.lif,.tiff ...*) supplied by the majority of gold standard image acquisition systems (Fig. S3). Importantly, image quality is a prerequisite for good analysis,

and the acquisition system must be carefully selected before the batch experiments are performed.

In the *Volume* option, the user must inform MuscleJ2 if the images contain a single Z or a stack of Z. When the *Z-stack* option is selected, MuscleJ2 will automatically perform a maximum intensity projection prior to any analysis (Fig. S3). Although MuscleJ2 is designed to work on whole skeletal muscle sections, there is a *Scanned Area* option (*Entire section/Crop*) in case the muscle section is not whole. However, the user must be careful when using the *Crop* option and ensure that the crop contains a minimum of 25% of the image with a black background without tissue. This is essential for correct quantification.

The *Artefact Detection* option, which was previously in the MuscleJ macro, has been incorporated into this section (Fig. 1). It allows the user to eliminate from the analysis any slides where the detected muscle fibers represent less than the indicated percentage of the total muscle surface.

### A new panel with features related to the whole skeletal muscle section

In this third panel, named *Data Analysis by Section*, we have introduced new functionalities that do not refer to individual fibers but to the total surface of the skeletal muscle (Fig. 1). All these analyses are performed on whole-slide image sections or on representative parts of the image manually cropped by users. For these analyses, the definition of ROI is not necessary, unlike other functionalities of the *Data Analysis by Fiber* panel, described below. Consequently, laminin staining is not mandatory, and artifact detection is not associated with these options. It is therefore the responsibility of the user to ensure that the muscle sections are correctly detected and do not contain holes or folds. However, staining for ECM or any fiber marker (except nuclear markers) is necessary for MuscleJ2 to delineate the section contours and estimate the total surface area. The corresponding channel must be implemented in the *Section Shape* in dialog box 2 (Fig. 1). This allows the quantifications of the different parameters to be related to the total surface of skeletal muscle.

In this panel, three new features have been developed:

#### ECM Area Detection (Fig. 2A)

The ECM forms a network of macromolecules and smaller components that fill the extracellular space and can be divided into two parts: the basement membrane, which surrounds thin muscle fibers, and a more diffuse interstitial matrix. The basement membrane can be specifically detected using anti-laminin or anti-collagen IV antibodies, for example. Quantification of the ECM is particularly important in the context of myopathies and skeletal muscle regeneration studies, which require assessment of the area of fibrosis corresponding to modifications of the ECM, with accumulation of different components, such as collagen I (reviewed in Loreti

et al. [6]). Similarly, wheat germ agglutinin (WGA), a carbohydrate-binding protein conjugated to various fluorochromes, can be used for the global visualization of muscle ECM and fiber boundaries [7]. This provides rapid fluorescence staining with few background noise events (Fig. 2A). Since WGA detects ECM by labeling sialic acid and N-acetylglucosamine residues contained in glycoproteins and glycolipids, it could also be linked to oligosaccharides contained in the cell membrane. Therefore, we do not recommend its utilization in conditions with large and multifocal myofiber necrosis areas and/or with immune infiltrates, such as the first few days after muscle injury (data not shown).

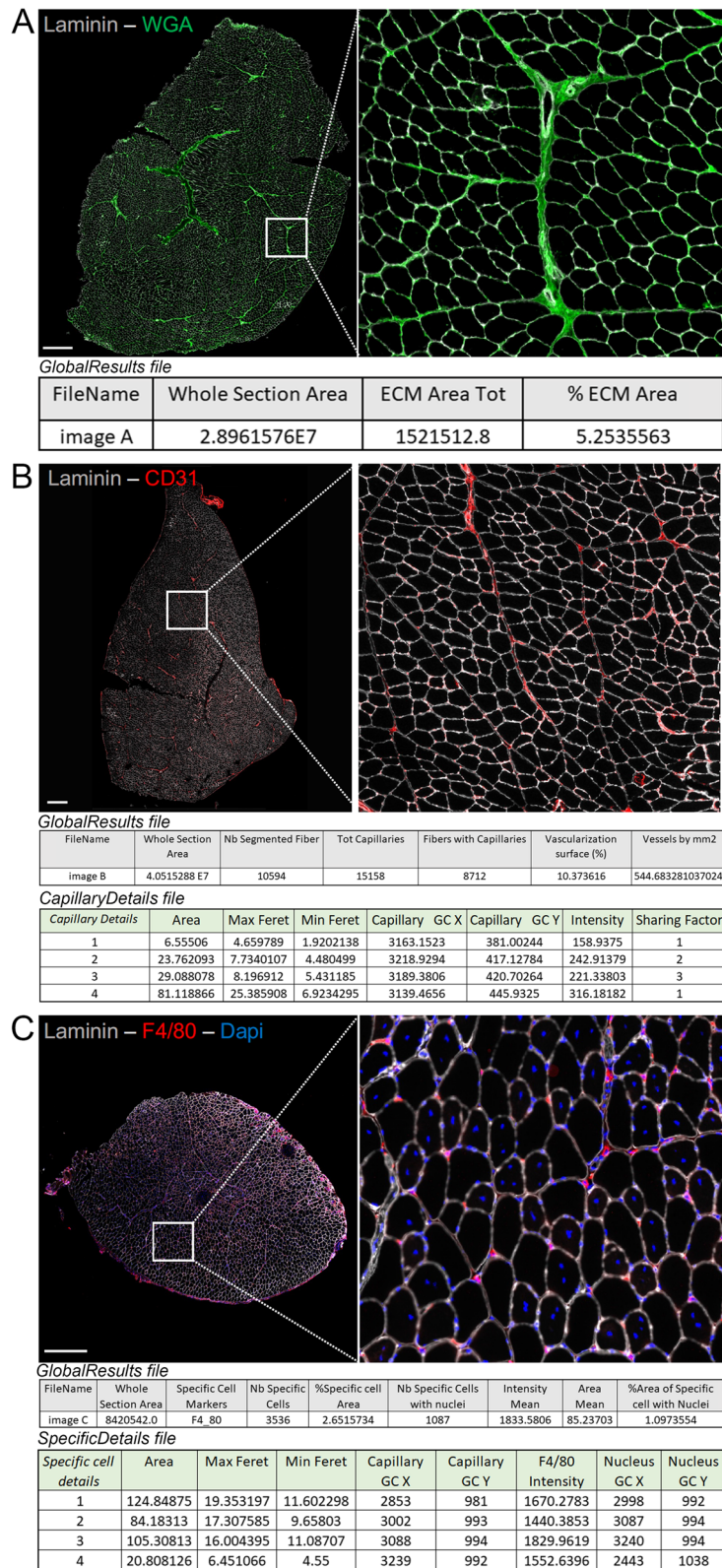
Because ECM staining is sufficient and is included in the algorithm to detect the muscle section, another channel for the *Section Shape* is not needed. We would like to emphasize that variations in ECM content can also be observed when tissue sections are obtained from different levels along the muscle length since internal tendons may or may not be present [8]. In the "GlobalResults" file for this analysis, two outputs are reported: the ECM area (in  $\mu\text{m}^2$ ) and the percentage of the total section area accounted for the ECM area (Fig. 2A).

#### Vascularization (Fig. 2B)

The second feature of the panel is the assessment of the *Vascularization* of the skeletal muscle. In the original version of MuscleJ, the number of vessels was quantified and reported to their associated fibers [1]. Such staining corresponds to capillaries. We now distinguish between total *Vascularization*, including all types of vessels without morphological criteria, and *Capillaries* (detailed below in the section *Data Analysis by Fiber*). This concerns all arteries or veins contained in the entire muscle section. This option measures the percentage of the total surface occupied by the vessels relative to the total section area of skeletal muscle. The number of vessels per  $\text{mm}^2$  is also provided in the result tables (Fig. 2B). Therefore, it is possible to perform an analysis of vascularization independently without using fiber morphology (which does not need to be labeled). As for the ECM, endothelial cell staining

(See figure on next page.)

**Fig. 2** New functionalities of the plugin. **A** Immunostaining of skeletal muscle with WGA showing the extracellular matrix (ECM) in green ( $SB=600\ \mu\text{m}$ ) and respective quantification with MuscleJ2 in the "GlobalResults" file. **B** Immunostaining of skeletal muscle with laminin (gray) and CD31 showing the endothelial cells in red ( $SB=600\ \mu\text{m}$ ) and quantification of vessels and capillaries with MuscleJ2. Tables present the results obtained after selecting the option *Vascularization* (section *Data Analysis by Section*) and *Capillaries* (section *Data Analysis by Fibers*). The gray table presents the results obtained in the "GlobalResults" file, and the green table presents some of the results obtained in the "CapillaryDetails" file ( $SB=600\ \mu\text{m}$ ). **C** Immunostaining of skeletal muscle with laminin (gray), DAPI (blue), and F4/80 showing the macrophages in red and quantification of specific cells with MuscleJ2 ( $SB=600\ \mu\text{m}$ ). The gray table presents the results obtained in the "GlobalResults" file, and the green table presents some of the results obtained in the "SpecificCells" file. *Nucleus GC X* and *Y* correspond to the coordinates of identified specific cells colabeled with DAPI. All areas are indicated in  $\mu\text{m}^2$



**Fig. 2** (See legend on previous page.)

(for example, with CD31 antibody) is sufficient and is included in the algorithm to detect the muscle section; therefore, this channel can be used for the *Section Shape*.

### Specific Cells (Fig. 2C)

Skeletal muscle tissue contains a variety of nonmyogenic cell types that are located between fibers and are not capillary or satellite cells, which are already tracked by MuscleJ. The third functionality is the characterization of these *Specific Cells* located anywhere in skeletal muscle. These may be, for example, resident stromal cells or infiltrating immune cells observed in pathological conditions or in injured tissues [9–11]. The name of the marker used to label-specific cells is entered manually as *Cell Marker* in the second dialog box (*Channel Information*) (Fig. 1F). This name will then be reported in the final table of results (Fig. 2C). This cell-specific marker can label an antigen as being located in the cytoplasm, membrane, or nucleus. A nuclear DNA label is also needed to ensure that the detected staining identifies a true cell and not artifacts such as cellular debris or a nonspecific signal. However, because nuclei of some cells may be imaged out of focus, the total number of specific cells, including those not counterstained with nuclear dye, is reported in the final “GlobalResults” file (*Nb-Specific Cells* and *Nb-Specific Cells with nuclei*) (Fig. 2C). In addition, MuscleJ2 provides information corresponding to the percentage of the area occupied by these cells (*%Specific Cell Area*), as well as the mean intensity of the signal in specific cells with nuclei (*Intensity Mean*) and their *Area Mean* (Fig. 2C).

Because each signal is different, MuscleJ2 provides the users with the raw data to allow them to set a personal threshold and filter their results based on their experience. In the final “SpecificDetails” file, the user can find the min and max Feret diameter, the coordinates ( $x, y$ ) of the gravity center of the specific staining (only cells costained with DAPI), the nuclear center of gravity ( $x, y$ ), and the intensity of the appropriate channel for each specific cell. As with all the other options, to allow viewing of the specific cells identified by MuscleJ2, their coordinates are saved in the ROI dedicated folder, and it is easy to return to any cell if needed. As an example, this new functionality was tested to detect F4/80-positive pan-macrophages (Fig. 2C) in a series of cross sections of regenerating muscle. Any validated antibody giving rise to a distinct signal in any cell in skeletal muscle can be used, offering a large panel of data

analysis. In a set of images, it is possible to quantify several cellular markers, albeit one at a time, by running the batch of images for each specific marker. Since cells positive for multiple labels will share the same located nucleus, they could be quantified by mixing (using open-access software such as R) all the files “SpecificDetails” for each muscle section by the column *nucleus gravity center* ( $x, y$ ).

All these novel functions are compatible with the other functions of the *Data Analysis by Fiber* panel.

### New functionalities reported for muscle fibers

In this section, all the results are given per fiber, based on the laminin staining (or any equivalent staining to identify myofibers). We have already described the different ROIs in the original version of MuscleJ [1], and they are conserved in this new version of the plugin. However, to be more precise, we have changed ROI<sup>V</sup> (vessels) to ROI<sup>Cap</sup> (capillaries), as explained previously. Moreover, we added a new ROI corresponding to the cellular membrane region of the fiber (ROI<sup>MB</sup>) (Fig. 3A). This new specific ROI<sup>MB</sup> has been designed to quantify fluorescence staining in sarcolemmal or subsarcolemmal regions, such as the dystrophin-glycoproteins complex, where mutations in the genes encoding for its components can cause several muscular dystrophies.

We have also implemented new functionalities in this section.

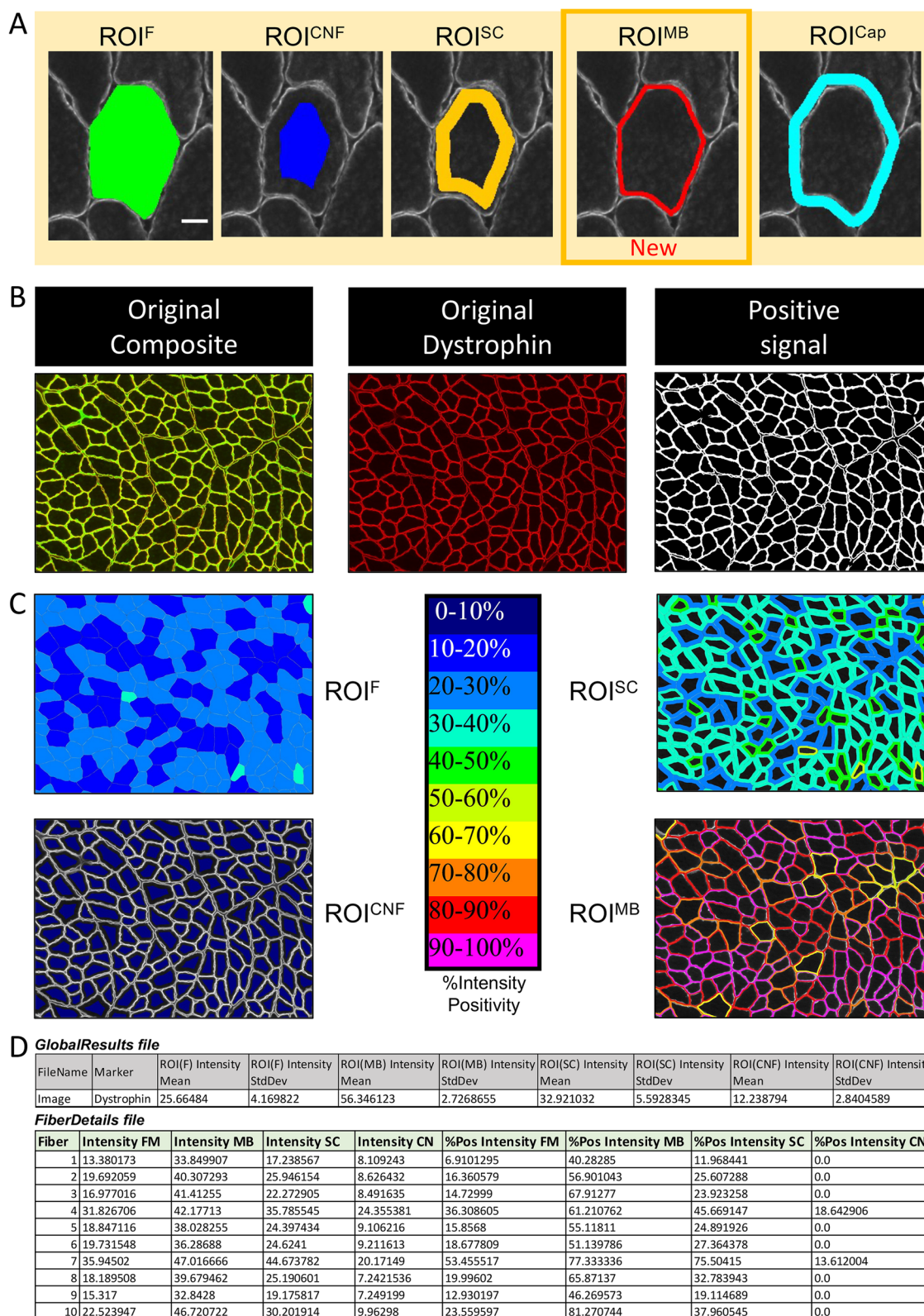
### Peri-myonuclei

Nuclei located inside myofibers are named “myonuclei” (Fig. 1). This novel functionality allows the quantification of the nuclei belonging exclusively to muscle fibers independently of the *Centro-Myonuclei* function. In healthy conditions, these nuclei exhibit a peripheral location. Since skeletal muscle is a highly adaptable tissue, their number may vary and needs to be quantified for each fiber. Myonuclei can be labeled in vivo using a transgenic mouse strain expressing histones coupled to GFP specifically in myofibers [12] or by using an antibody against the centrosomal protein PCM1 [13]. While PCM1 can also be expressed by proliferating myoblasts and macrophages in damaged muscle [14], MuscleJ2 can specifically detect myonuclei based on their location in the ROI<sup>MB</sup> (Fig. S4).

To be identified as peripheral myonuclei by MuscleJ2, nuclei must be colabeled with the myonuclei marker and a fluorescent DNA stain such as DAPI. This is different

(See figure on next page.)

**Fig. 3** Measurement of Fiber Intensity by ROI. **A** Representation of the different ROIs in MuscleJ2. ROI<sup>F</sup>, ROI Fiber; ROI<sup>CNF</sup>, ROI Centronucleated Fiber; ROI<sup>SC</sup>, ROI Satellite Cell; ROI<sup>Cap</sup>, ROI Capillary; ROI<sup>MB</sup>, ROI Membrane. **B** Original image of skeletal muscle stained with dystrophin and corresponding cartographies representing the different ROIs obtained after MuscleJ2 analysis with the *Fiber Intensity* option. **C** For each fiber, the intensity of the staining and the percentage of positive pixels in each ROI are given. **D** Quantification of dystrophin staining in the different ROIs. The gray table presents the results obtained in the “GlobalResults” file, and the green table presents some of the results obtained in the “FiberDetails” file



**Fig. 3** (See legend on previous page.)



from *Centro-Myonuclei* detection, which uses ROI<sup>CNF</sup> and does not require colabeling because the central location may be sufficient for classification as myonuclei.

This analysis could be particularly useful to study myonuclei modifications in response to exercise training, and its controversial persistence during detraining (reviewed in Rhamati et al. [15]), which could vary according to fiber type, could be associated with changes in nuclei [16] or could be regulated by epigenetic modifications that could be investigated in situ with fluorescent labeling [17].

### Capillaries

The option named *Capillaries* replaces the option *Vessels* of the original version of MuscleJ. This allows the user to analyze the capillaries associated with the fibers independently of the total vascularization of the muscle, which can now be performed using the *Vascularization* option, as described above. Consequently, the new ROI<sup>Cap</sup> replaces the previous ROI<sup>V</sup>.

The “GlobalResults” file shows the number of fibers with capillaries and the total number of capillaries. The min and max Feret diameter, the gravity center coordinates ( $x$ ,  $y$ ), and the intensity of the appropriate channel for each capillary (Fig. 2B), as well as the parameter named *Sharing Factor* (SF), which represents the number of fibers around each capillary [17], are included in the “CapillaryDetails” file. In the “FibersDetails” file, the number of capillaries surrounding each fiber has been named *capillary contacts* to correspond to the commonly used terms [18, 19].

### New fiber type IIX and changes in fiber typing

In the previous version of MuscleJ, fibers expressing type IIX myosin heavy chain (MyHC) were detected indirectly as corresponding to unstained fibers. In MuscleJ2, a channel can now be selected to directly identify this additional adult MyHC. This allows more accurate detection of type IIX fibers and hybrid myofibers expressing two or more isoforms [20]. This option is named *Type IIX fibers* (Fig. S5A). This allows, for example, investigation of hybrid myofiber transitions in disease or in response to exercise [20]. Specific labeling of fibers expressing MyHC IIX may be particularly useful for human muscle samples because the type IIB isoform is not expressed, and some antibodies may cross-react against other isoforms [21].

In addition, many changes were made in the fiber typing to improve this quantification (see “Methods”). The fiber-type analysis of the plugin has been optimized using a set of images from different users where type IIB or IIX fibers have, in most cases, a lower fluorescence intensity, probably due to lower reactivity of the IgM subclass

of these primary antibodies [22]. We would like to point out that a fiber type could be variable along the same myofiber, as type IIA has been reported to be more abundant at the proximal extremity of the *tibialis anterior* in mice [3].

The thresholds are given in the “GlobalResults” file, as along with the associated fiber type defined by MuscleJ2 (Fig. S5B). However, if staining problems are encountered, it is possible not to use the automatic classification performed by MuscleJ2 and to go back to the “FiberDetails” files to reclassify the fibers manually based on a user-defined threshold.

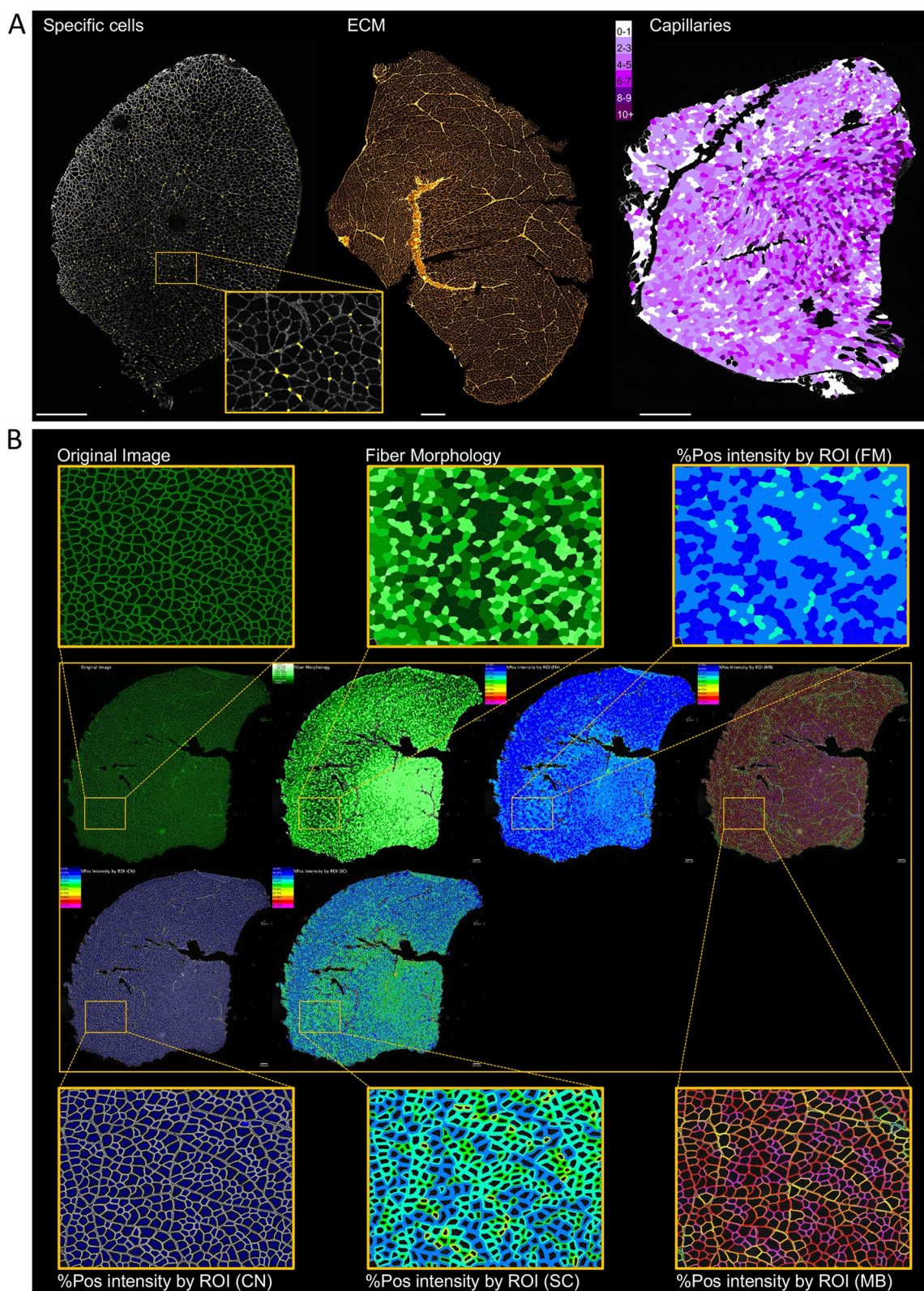
### Fiber intensity by ROI (Fig. 3)

A myriad of fluorescent labels can be investigated in muscle fibers as part of skeletal muscle research. The *Fiber Intensity by ROI* is a feature that allows quantification of any staining in muscle fibers (Fig. 1). Staining intensity is measured simultaneously in different areas of interest, since some markers may be heterogeneously expressed within the myofiber or at or below the cell membrane (sarcolemma). The results provide the intensity of the labeling and the %intensity positivity in the different ROIs (Fig. 3A–B). In the “GlobalResults” file, the average intensity of all segmented fibers is given for each ROI (*ROIx Intensity Mean*), as well as the associated standard deviation (*ROIx Intensity StdDev*).

For example, in regenerating or pathologic states, developmental isoforms could be re-expressed as embryonic and perinatal MyHC [23]. The quantification of the number of newly regenerated fibers re-expressing embryonic MyHC (MYH3-positive fibers) can now be detected using this new function. Another example is the quantification of the percentage of dystrophin positivity in the different fiber ROIs, particularly in the ROI<sup>MB</sup> (Fig. 3C). In the “GlobalResults” file, MuscleJ2 indicates the mean intensity of staining for all the fibers based on the staining/background ratio. However, the user can decide to use a different threshold based on the results by working directly on the “FiberDetails” file (Fig. 3D).

### Multiple analysis in the cartography section

All analyses carried out by MuscleJ2 can be visualized on cartographies in the *Data Cartographies* panel (Fig. 1). In addition to the five cartographies initially developed in MuscleJ to visualize the results of the analysis of *Fiber Morphology*, *Centro Myonuclei Fibers*, *Satellite Cells*, *Vessels*, and *Fiber Type*, we have added the cartographies of *peri-myonuclei*, *Fiber Intensity*, *Specific Cell Localization*, and in situ *ECM Signal* (Fig. 4A). MuscleJ2 also offers the possibility of adding a legend and a scale bar at different positions of the image, determined by the user. In addition, it is now possible for the user to select the channel



**Fig. 4** Novelty of the cartography section. **A** Representative images of the cartographies obtained for specific cells, ECM detection, and capillaries ( $SB=600\ \mu\text{m}$ ). **B** Representation of the image obtained after selection of the multicartography option, in which different cartographies are assembled on the same image. In this example, the image was stained with dystrophin, and the results are represented in the different cartographies ( $SB=300\ \mu\text{m}$ )

on which the cartography will be drawn (in the second dialog box: *Image used for cartographies*). Furthermore, for the option *Fiber Intensity by ROI*, different cartographies were added to represent the MuscleJ2 results in the different ROIs. Another new option in this panel, named *Multi-Cartography Montage*, allows users to obtain a photo montage of all selected options in the *Data cartography* panel (Fig. 4B).

### Generation of metadata files

After each run, MuscleJ2 generates a text file containing a summary of the options and selected analyses (Fig. S6). This file allows the user to easily retrieve the metadata associated with the performed analysis and is in the result folder along with other files such as “Global-Results” and “FiberDetails.” In the latter, the user can access the details of the requested *Analysis by Fiber*. The user can therefore use the “ROI” file to review the identified fibers of the section and possibly manually delete some major aberrant fiber detections. However, we do not recommend adding new fibers manually, as this will add an additional source of variability since the mode of quantification will be different from that performed automatically. The “GlobalResults” file averages all the fibers in the section. Compared to the original version of MuscleJ, it is no longer generated at the end of the run but is updated after each executed image to obtain the global results step by step, without losing data if the plugin unexpectedly stops before the end of the process.

### Discussion

The development of MuscleJ2, running on ImageJ/Fiji, now significantly extends the functionality of the original macro to cover a wider range of possible quantification scenarios performed on fluorescence-labeled images of skeletal muscle sections.

While numerous other software programs have been developed since the publication of the original MuscleJ, most of them are complementary and focus on specific parameters (Sup. Table 1). One of the major advantages of MuscleJ2 over other comparable software is its capacity to handle a combination of different types of analysis. All the described functions can be used together to provide new information.

With the parallel development of new acquisition systems, which offer the possibility of working with more than four fluorescent markers, MuscleJ2 enables multioutput skeletal muscle analysis. For example, it is possible to perform multiple labeling with the detection of laminin and nuclei associated with three types of myosin heavy chains, requiring 5 detection channels (Fig. S4) or more complex multicolor staining with codetection of

laminin, vessels, and two types of myosin heavy chains using one of the protocols described by Bailly et al. [24].

The developed plugin is easy to use, and the troubleshooting annex of the User Guide will be completed based on feedback received from users to list the problems users encounter and their solutions. We encourage users to keep up to date with the changes that will be made in future versions of MuscleJ2, which will be updated and made available on GitHub.

We will continue to implement new features in the plugin, which will be updated online and detailed on GitHub. All new features to be developed will be available on GitHub, which will be updated regularly.

### Methods

#### Animals and tissue preparation

To validate and illustrate the new features of MuscleJ2, skeletal muscle sections were obtained from mice and rats. Animals underwent experimental procedures approved by local ethics committees for other projects in which tissue sampling had already been planned. Rats were euthanized by decapitation following isoflurane anesthesia. For both models, various muscle anatomic localizations were harvested, including the hind limb (*tibialis anterior* and *gastrocnemius*) as well as the diaphragm and snap-frozen in liquid nitrogen-cooled isopentane. Samples were then stored at  $-80^{\circ}\text{C}$  before cryosectioning.

#### Immunofluorescence staining protocols

Immunofluorescence staining was performed on frozen thin sections of skeletal muscle (7 to 12  $\mu\text{m}$ ). Briefly, sections were rehydrated with 1X PBS and fixed for 10 min (mouse samples) and 20 min (rat) in 4% (w/v) paraformaldehyde (PFA) in 1X PBS. After washing in 1X PBS, the cells were permeabilized with 0.1% or 0.5% (v/v) 1X PBS-Triton $\times$ 100 and then blocked either in 1X PBS +5% horse serum (mouse samples) or 10% BSA (F4/80 staining in mouse samples) or else in Emerald: Antibody Diluent (no. 936B-08, Sigma; rat samples). Primary antibodies were incubated overnight (ON) at  $4^{\circ}\text{C}$ . Hoechst H33342, and WGA and secondary antibodies, were incubated for 45 min at room temperature. In rat samples, nuclei were stained by DAPI contained in the mounting medium.

The specific protocols, products, antibodies, and markers used are described in Sup. Table 2. Most of the images were acquired at  $10\times$  and  $20\times$  magnification of the whole section using the Axio Scan. Z1 (Zeiss, Germany), in several imaging platforms, includes one with 7 fluorescence channels by LED light source (385 nm/430 nm/475 nm/555 nm/590 nm/630 nm/735 nm). Some acquisitions were

performed on the NanoZoomer S60 equipped with 5 fluorescence channels (Hamamatsu, Japan) or on the epifluorescence microscope DM6000 (Leica, Germany) using a monochrome camera.

### Programming environment

#### *MuscleJ2 as a plugin in Fiji/ImageJ*

As Java-based public domain software implemented as a plugin for ImageJ (NIH, Bethesda, MD, USA, <https://imagej.nih.gov/ij/>) or Fiji [25], MuscleJ2 benefits from the facilities offered by Fiji/ImageJ for image input/output and preprocessing.

The Java source codes were developed in the *Eclipse IDE for Java Developers* free environment (Version 4.23.0, [www.eclipse.org](http://www.eclipse.org)) with ImageJ internal libraries.

Thanks to the Java language, memory management has been optimized, and MuscleJ2 permits either a larger batch or image size than the previous macro MuscleJ. Moreover, several features have been optimized to increase the speed of *Analysis by Fiber*, e.g., for morphological analysis, the time mean by section with MuscleJ2 is decreased by 2 and that for result cartographies by 10.

#### *Hardware and software requisites*

The plugin has been tested on different operating systems (OS) such as Windows 7, 8, and 10/MacOS Monterey up to 12.4/Ubuntu 20.04 with the following minimum computer requirements:

- RAM: 8 GB minimum, 16 GB highly suggested
- System type: 64-bit operating system

The Fiji/ImageJ environment is required with a maximum memory setting fixed to 75% of the computer's total memory, and the *Bio-Formats* plugin (<https://docs.openmicroscopy.org/>) must be present in the *Plugins* menu.

The plugin has been tested on the following software versions:

- Fiji/ImageJ version: from 1.51e to 1.53t
- Java version (64 bits): From Java 1.8.0–66 to Java 1.8.0–172
- Used plugins: Bio-Formats plugins (up to release 6.6)

For more information about MuscleJ2 plugin installation and preliminary requests before starting MuscleJ2, please refer to the *User's Guide Chap. I* "MuscleJ2 in the Fiji/ImageJ environment."

### New implementations and improvements

The main entry point of MuscleJ2 is a graphical user interface organized into five panels: *Sample Data*, *Data Acquisition*, *Data Analysis by Section*, *Data Analysis by Fiber*, and *Data Cartographies* involving the implementation or improvement of several functions related to these different panels.

#### *User interface panel 1: sample data*

*Option Pathophysiology:* The plugin measures the mean of all the CSA fibers of the section. From this average, only fibers with a circularity between 0.45 and 1 and a fiber area between  $100 \mu\text{m}^2$  and  $\text{area mean} + 3 \times \text{StdDev}$  for the *Healthy* option and  $50 \mu\text{m}^2$  and  $\text{area mean} + 4 \times \text{StdDev}$  for the *Damaged* option are analyzed.

#### *User interface panel 2: analysis by section*

*Option ECM Area Detection:* To detect the area representative of ECM, a threshold based on *Moments* method was performed, followed by a low erosion filter.

*Option Vascularization:* After a series of pretreatments and an intensity histogram analysis to subtract the background and to detect the real intensity on the appropriate channel, the vessel borders are delimited, and the total surface covered by vessels is calculated.

The *Vascularization surface (%)* mentioned in the "GlobalResults" table corresponds to the ratio between the total surface covered by vessels and the total surface of the section.

*Option Specific Cells:* The algorithm first applies a series of pretreatments on the indicated channel to quantify both circular and irregularly shaped cells on the whole section. Then, the nuclei are localized on the appropriate channel, and MuscleJ2 checks if they overlap with the specific cells previously segmented. At this step, there are two sets of specific cells, with or without nuclei gravity center coordinates, as mentioned in the "SpecificDetails" file.

#### *User interface panel 3: analysis by fiber*

*ROI<sup>MB</sup> definition:* The ROI<sup>MB</sup> is defined as the space inside the fiber ROI corresponding to one-twentieth of the minimal (Min) Feret diameter of the ROI<sup>F</sup>.

**Option capillaries:** MuscleJ2 recognizes capillaries with specific morphological criteria, such as maximum surface ( $100 \mu\text{m}^2$ ) and minimum circularity (0.45).

**Option fiber Intensity by ROI:** To track the real positive signal inside the ROIs, after background subtraction, an automatic threshold based on intensity histogram analysis was applied to attribute each fiber a percentage of positive intensity defined by the number of positive intensity pixels divided by the surface of the ROIs (%intensity positivity) (Fig. 3B).

**Option fiber typing:** With this option, for all fibers detected by morphological analysis, the intensity mean ( $\text{mean}_{\text{IF}}$ ) and its standard deviation were calculated by channel corresponding to a type of fiber (I, IIA, IIB, or IIX).

Based on intensity histogram analysis, different thresholds of positivity, depending on fiber types, have been defined as  $\text{Mean}_{\text{IF}} + \text{StdDev}$  for type I and IIA fibers and equal to  $\text{Mean}_{\text{IF}}$  for type IIB and IIX fibers.

#### User interface panel 4: data cartographies

**Option: legend** The sizes of the legend (width and height) are proportional to the original image size. For the type legend, only the hybrid types present in the section are mentioned.

**Option scale bar:** With this option, four locations to position the scale bar are possible: lower right, lower left, upper right, and upper left. By default, no scale bar is shown. The length of the scale bar is fixed to  $300 \mu\text{m}$  for a whole section and to  $100 \mu\text{m}$  for an image crop.

**Option Multi Cartography Montage:** For this option, thanks to the ImageJ function called “Make a montage...”; an automatic montage of the asked cartographies is created with the following parameters: if the number of cartographies is higher than 3, a new line is created to perform readable montage with a reasonable size. A title is written on each cartography corresponding to the analysis performed. For more information on the features and options of the MuscleJ2 plugin, please refer to the *User Guide Chap. II* “How to launch MuscleJ”.

#### Output refinement

##### Metadata and user choices by batch

A text log file by batch is created with the following nomenclature: *YYYYMMDD\_HHMMSS\_imagefoldername\_BATCH\_LOG.txt*.

It contains the information associated with the performed analysis as the metadata selected by the user in the principal dialog box but also the performed analysis, channel attribution, and general information linked to the batch run.

##### Data analysis nomenclature

A text global result file by batch run is created with the nomenclature *"ImageFolderName\_GlobalResults\_Listofanalysisperformed.txt"*, where “ImageFolderName” corresponds to the name of the image folder selected at the beginning of the batch run and “Listofanalysisperformed” corresponds to the abbreviations added at the end of the global result file name. This allows the user to associate a global result table with the analysis pipeline performed by batch run.

##### Output files

Each distinct cell type has a proper file such as “SatCell-Details” for satellite cells, “SpecificDetails,” “fluorescent marker name” for each labeling of specific cells, or “CapillaryDetails” replacing the “VesselDetails” file of the previous version. All these files have been provided for each image analyzed per batch run (for more information, see *User Guide Chap. III* “Description of result files by batch”).

All fiber ROIs are automatically saved in the ROI folder with the extension “\_xxROI.zip,” including the ROI corresponding to section shape but also the ROIs for specific cells as well as for satellite cells.

##### Abbreviations

BSA	Bovine serum albumin
Cap	Capillary
CNF	Centronucleated fiber
CSA	Cross-sectional area
DAPI	4',6-Diamidino-2-phenylindole
DNA	Deoxyribonucleic acid
ECM	Extracellular matrix
F	Fiber
FAP	Fibro-adipogenic progenitor
Ig	Immunoglobulin
MB	Membrane
Min/max	Minimal/maximal
MYH	Myosin heavy chain (gene)
MyHC	Myosin heavy chain (protein)
ON	Overnight
PBS	Phosphate-buffered saline
PCM1	Pericentriolar material 1
PFA	Paraformaldehyde
ROI	Region of interest
SB	Scale bar
SC	Satellite cell
StdDev	Standard deviation
V	Vessel
v/v	Volume per volume
w/v	Weight per volume
WGA	Wheat germ agglutinin

## Supplementary Information

The online version contains supplementary material available at <https://doi.org/10.1186/s13395-023-00323-1>.

**Additional file 1: Fig. S1.** Comparison of the *Homogeneous* and *Heterogeneous* options. Comparison of the results and cartographies obtained by MuscleJ2 after fiber morphology analysis on laminin-stained *tibialis anterior* sections after partial injury, with the *Healthy* option (left) and the *Damaged* option (right). Histograms at the bottom show the frequency of fibers with different cross-sectional areas. The results show that the number of included fibers is higher with the *Damaged* option than with the *Healthy* option, where numerous fibers are excluded from the analysis (black fibers). **Fig. S2.** Analysis of the diaphragm with MuscleJ2. **A** Cartography of the extracellular matrix (ECM) staining representing the diaphragm of the mouse rolled up on itself at the time of cutting. **B** Comparison of the results obtained by MuscleJ2 after ECM analysis on laminin-stained diaphragm sections with the *Diaphragm* option and the *Limb* option. The results show that the total surface area is smaller with the *Diaphragm* section due to the removal of the fiberless parts (\*), which is not the case with the *Limb* option. **Fig. S3.** Comparison of the Data Acquisition panel between the macro and the plugin MuscleJ2. Screenshots of the dialog boxes in the initial macro (**A**) and the plugin (**B**) showing changes in the Data acquisition section. **Fig. S4.** Peri-myonuclei detection with MuscleJ2. A Skeletal muscle section from injured mouse (21 days post-injury) stained with DAPI, PCM1 and laminin antibodies (SB=500  $\mu\text{m}$ ) and representative cartography of perimyocnuclei quantification results obtained with MuscleJ2. Only double PCM1/DAPI-positive cells in the ROI<sup>MB</sup> are quantified and represented in the cartography. **B** The gray table shows the results obtained from the "GlobalResults" file, and **C** The green table shows a subset of the results obtained from the "PeriMyo-NucleiDetails" file. **Fig. S5.** Fiber typing with MuscleJ2. **A** Skeletal muscle section stained with DAPI, myosin heavy chain IIX, IIA, I and laminin antibodies (SB=600  $\mu\text{m}$ ). **B** Representative cartographies (original image, fiber morphology and fiber typing) of the results obtained with MuscleJ2 (SB=300  $\mu\text{m}$ ). **C** Global file results and fiber detail results. All areas are given in  $\mu\text{m}^2$ . **Fig. S6.** Global information associated with a MuscleJ2 batch run. Screenshots of the BATCH\_LOG text file corresponding to the meta data and the analysis performed during the batch run as well as channel attributions to keep a printout of options and global information. **Sup. Table 1.** Main features of tools and software available to perform a fully or semiautomatic analysis on skeletal muscle immunofluorescence images. List of abbreviations used: AI: artificial intelligence; DPI: days post injury; EBD: Evans blue dye; IF: immunofluorescence; IHC: immunohistochemistry; MYH: myosin heavy chain (gene); NCAM: neural cell adhesion molecule; PFA: paraformaldehyde; ref: reference. **Sup. Table 2.** List of antibodies and specific protocols used.

### Acknowledgements

The authors acknowledge funding support from Institut Pasteur Paris, Institut Pasteur de Lille, INSERM, Association Française contre les Myopathies (AFM-Téléthon no. 22281 and #23818), Société Française de Myologie (SFM), French Direction Générale de l'Armement, Paris, France (to AT), the Agence Nationale pour la Recherche ANR-10-LABX-0046 (to BS, HD and AML), European Union under the European Regional Development Fund (ERDF), by the Hauts de France Regional Council, the MEL, and the French State. The UTechS Photonic Bioluminescence/C2RT (AD, GLL, and SLS) is part of the France Bioluminescence infrastructure supported by the French National Research Agency (ANR-10-INSB-04-01, "Investments for the future"). For image acquisitions, we are grateful to the "Imaging and Cytometry Core Facility" of Genethon for their technical support and to the Bicell platform in Lille. We also thank all the members of the IRBA Imaging Unit headed by Dr. Anne-Laure Favier for their advice (in particular Dr. Krisztina Nikovics and Xavier Butigieg) as well as the regular use of facilities. We thank Dr. Meryem Tardivel and Antonino Bongiovanni of the BiCellCampus HU Facility for access to systems and technical advice. We thank Dr. Mylène Fefeu and Dr. David Hardy of the Histopathology Platform (Institut Pasteur Paris) for the acquisition and sharing of image data (F4/80) and Dr. Cédric Thepenier for manuscript review and Linux expertise. We thank all the individuals involved in the processing of muscle samples performed at Institut Pasteur de Lille

(Thara Jaworski, Jocelyn Decanter and Justine Beauchamp) and at IRBA (Théo Vanneau and Marie-Claire Erkel). Antibodies used from the Developmental Studies Hybridoma Bank (University of Iowa, USA) were developed by Prof. Stefano Schiaffino (BA-D5, SC-71 and BF-F3) or by Dr. Christine Lucas (6H1) labs. We thank all the users of MuscleJ for their feedback.

### Authors' contributions

AD and AM-L designed and supervised the research. AD, AM-L, and AT contributed to the plugin conception and wrote the manuscript. AD and GLL designed the plugin architecture and wrote and validated the plugin. AM-L, AT, and SL conducted the experiments and acquired and analyzed the data. SLS, BS, and HD gave conceptual advice and contributed to the critical revision of the manuscript. All authors read and approved the final manuscript.

### Availability of data and materials

A portion of the data that support the findings of this study are available on the shared GitHub space, but restrictions apply to the availability of some images; therefore, they have been anonymized. All the data corresponding to the described analysis can be downloaded from the GitHub site, but they cannot be used without request to the corresponding authors.

### Declarations

#### Ethics approval and consent to participate

All laboratory animals were handled in accordance with European legislation (dir 2010/63/EU) transcribed into French law (decree 2013-118). All the experimental procedures were approved by local ethics committees: no. 25482-2020031617508246 for mouse samples and the French Army Animal Ethics Committee (N°2011/22.1) for rat samples.

#### Consent for publication

Not applicable.

#### Competing interests

The authors declare no competing interests.

Received: 10 February 2023 Accepted: 25 July 2023

Published online: 23 August 2023

### References

1. Mayeux-Louchart A, Hardy D, Thorel Q, Roux P, Gueniot L, Briand D, et al. MuscleJ: a high-content analysis method to study skeletal muscle with a new Fiji tool. *Skelet Muscle*. 2018;8(1):25.
2. Heemskerk AM, Strijkers GJ, Vilanova A, Drost MR, Nicolay K. Determination of mouse skeletal muscle architecture using three-dimensional diffusion tensor imaging. *Magn Reson Med*. 2005;53(6):1333–40.
3. Bindellini D, Voortman LM, Olie CS, van Putten M, van den Akker E, Raz V. Discovering fiber type architecture over the entire muscle using data-driven analysis. *Cytometry A*. 2021;99(12):1240–9.
4. Lessa TB, de Abreu DK, Bertassoli BM, Ambrósio CE. Diaphragm: a vital respiratory muscle in mammals. *Ann Anat Anat Anz Off Organ Anat Ges*. 2016;205:122–7.
5. Henry CC, Martin KS, Ward BB, Handsfield GG, Peirce SM, Blemker SS. Spatial and age-related changes in the microstructure of dystrophic and healthy diaphragms. *PLoS ONE*. 2017;12(9):e0183853.
6. Loreti M, Sacco A. The jam session between muscle stem cells and the extracellular matrix in the tissue microenvironment. *Npj Regen Med*. 2022;7(1):1–15.
7. Kostrominova TY. Application of WGA lectin staining for visualization of the connective tissue in skeletal muscle, bone, and ligament/tendon studies. *Microsc Res Tech*. 2011;74(1):18–22.
8. Binder-Markey BI, Broda NM, Lieber RL. Intramuscular anatomy drives collagen content variation within and between muscles. *Front Physiol*. 2020 [cited 19 Sep 2022];11. <https://doi.org/10.3389/fphys.2020.00293>
9. Bentzinger CF, Wang YX, Dumont NA, Rudnicki MA. Cellular dynamics in the muscle satellite cell niche. *EMBO Rep*. 2013;14(12):1062–72.

10. Wosczyzna MN, Rando TA. A muscle stem cell support group: coordinated cellular responses in muscle regeneration. *Dev Cell*. 2018;46(2):135–43.
11. Reidy PT, McKenzie AI, Mahmassani ZS, Petrocelli JJ, Nelson DB, Lindsay CC, et al. Aging impairs mouse skeletal muscle macrophage polarization and muscle-specific abundance during recovery from disuse. *Am J Physiol Endocrinol Metab*. 2019;317(1):E85–98.
12. Iwata M, Englund DA, Wen Y, Dungan CM, Murach KA, Vechetti IJ, et al. A novel tetracycline-responsive transgenic mouse strain for skeletal muscle-specific gene expression. *Skelet Muscle*. 2018;8(1):33.
13. Winje IM, Bengtsen M, Eftestøl E, Juvkam I, Bruusgaard JC, Gundersen K. Specific labelling of myonuclei by an antibody against pericentriolar material 1 on skeletal muscle tissue sections. *Acta Physiol*. 2018;223(4):e13034.
14. Viggars MR, Owens DJ, Stewart C, Coirault C, Mackey AL, Jarvis JC. PCM1 labeling reveals myonuclear and nuclear dynamics in skeletal muscle across species. *Am J Physiol Cell Physiol*. 2023;324(1):C85–97.
15. Rahmati M, McCarthy JJ, Malakoutinia F. Myonuclear permanence in skeletal muscle memory: a systematic review and meta-analysis of human and animal studies. *J Cachexia Sarcopenia Muscle*. [cited 2022 Sep 19];n/a(n/a). <https://doi.org/10.1002/jcsm.13043>
16. Murach KA, Mobley CB, Zdunek CJ, Frick KK, Jones SR, McCarthy JJ, et al. Muscle memory: myonuclear accretion, maintenance, morphology, and miRNA levels with training and detraining in adult mice. *J Cachexia Sarcopenia Muscle*. 2020;11(6):1705–22.
17. Ohsawa I, Kawano F. Chronic exercise training activates histone turnover in mouse skeletal muscle fibers. *FASEB J Off Publ Fed Am Soc Exp Biol*. 2021;35(4):e21453.
18. Hepple RT, Mackinnon SLM, Thomas SG, Goodman JM, Plyley MJ. Quantitating the capillary supply and the response to resistance training in older men. *Pflug Arch*. 1996;433(3):238–44.
19. Leuchtmann AB, Mueller SM, Aguayo D, Petersen JA, Ligon-Auer M, Flück M, et al. Resistance training preserves high-intensity interval training induced improvements in skeletal muscle capillarization of healthy old men: a randomized controlled trial. *Sci Rep*. 2020;10(1):6578.
20. Medler S. Mixing it up: the biological significance of hybrid skeletal muscle fibers. *J Exp Biol*. 2019;222(23):jeb200832.
21. Murach KA, Dungan CM, Kosmac K, Voigt TB, Tourville TW, Miller MS, et al. Fiber typing human skeletal muscle with fluorescent immunohistochemistry. *J Appl Physiol*. 2019;127(6):1632–9.
22. Sawano S, Komiya Y, Ichitsubo R, Ohkawa Y, Nakamura M, Tatsumi R, et al. A one-step immunostaining method to visualize rodent muscle fiber type within a single specimen. *PLoS ONE*. 2016;11(11):e0166080.
23. Guiraud S, Edwards B, Babbs A, Squire SE, Berg A, Moir L, et al. The potential of utrophin and dystrophin combination therapies for Duchenne muscular dystrophy. *Hum Mol Genet*. 2019;28(13):2189–200.
24. Bailly M, Féasson L, Pereira B, Boileau A, Hourdé C, Germain N, et al. Two new reliable immunohistochemical methods for simultaneous identification of capillaries, the three types of fibers and basal lamina in human skeletal muscle. *Histochem Cell Biol*. 2020;154(3):327–37.
25. Schindelin J, Arganda-Carreras I, Frise E, Kaynig V, Longair M, Pietzsch T, et al. Fiji: an open-source platform for biological-image analysis. *Nat Methods*. 2012;9(7):676–82.

## Publisher's Note

Springer Nature remains neutral with regard to jurisdictional claims in published maps and institutional affiliations.

Ready to submit your research? Choose BMC and benefit from:

- fast, convenient online submission
- thorough peer review by experienced researchers in your field
- rapid publication on acceptance
- support for research data, including large and complex data types
- gold Open Access which fosters wider collaboration and increased citations
- maximum visibility for your research: over 100M website views per year

At BMC, research is always in progress.

Learn more [biomedcentral.com/submissions](https://biomedcentral.com/submissions)

