



HAL
open science

Estimation of Improvements in Mortality in Spectrum Among Adults With HIV Receiving Antiretroviral Therapy in High-Income Countries

Adam Trickey, Robert Glaubius, Nikos Pantazis, Robert Zangerle, Linda Wittkop, Janne Vehreschild, Sophie Grabar, Matthias Cavassini, Ramon Teira, Antonella d'Arminio Monforte, et al.

► **To cite this version:**

Adam Trickey, Robert Glaubius, Nikos Pantazis, Robert Zangerle, Linda Wittkop, et al.. Estimation of Improvements in Mortality in Spectrum Among Adults With HIV Receiving Antiretroviral Therapy in High-Income Countries. *Journal of Acquired Immune Deficiency Syndromes - JAIDS*, 2024, 95 (1S), pp.e89-e96. 10.1097/qai.0000000000003326 . hal-04467807

HAL Id: hal-04467807

<https://hal.science/hal-04467807>

Submitted on 20 Feb 2024

HAL is a multi-disciplinary open access archive for the deposit and dissemination of scientific research documents, whether they are published or not. The documents may come from teaching and research institutions in France or abroad, or from public or private research centers.

L'archive ouverte pluridisciplinaire **HAL**, est destinée au dépôt et à la diffusion de documents scientifiques de niveau recherche, publiés ou non, émanant des établissements d'enseignement et de recherche français ou étrangers, des laboratoires publics ou privés.



Distributed under a Creative Commons Attribution 4.0 International License

OPEN

Estimation of Improvements in Mortality in Spectrum Among Adults With HIV Receiving Antiretroviral Therapy in High-Income Countries

Adam Trickey, PhD,^a Robert Glaubius, PhD,^b Nikos Pantazis, PhD,^c Robert Zangerle, MD,^d Linda Wittkop, PhD,^{e,f,g} Janne Vehreschild, MD,^h Sophie Grabar, PhD,^{i,j} Matthias Cavassini, MD,^k Ramon Teira, MD,^l Antonella d'Arminio Monforte, PhD,^m Jordi Casabona, PhD,ⁿ Ard van Sighem, PhD,^o Inma Jarrin, PhD,^{p,q} Suzanne M. Ingle, PhD,^a Jonathan A. C. Sterne, PhD,^{a,r,s} Jeffrey W. Imai-Eaton, PhD,^{t,u} and Leigh F. Johnson, PhD^v

Introduction: Mortality rates for people living with HIV (PLHIV) on antiretroviral therapy (ART) in high-income countries continue to decline. We compared mortality rates among PLHIV on ART in Europe for 2016–2020 with Spectrum's estimates.

Methods: The AIDS Impact Module in Spectrum is a compartmental HIV epidemic model coupled with a demographic population projection model. We used national Spectrum projections developed for the 2022 HIV estimates round to calculate mortality rates among PLHIV on ART, adjusting to the age/country distribution of PLHIV

From the ^aPopulation Health Sciences, University of Bristol, Bristol, United Kingdom; ^bCenter for Modeling, Planning and Policy Analysis, Avenir Health, Glastonbury, CT; ^cDepartment of Hygiene, Epidemiology and Medical Statistics, Medical School, National and Kapodistrian University of Athens, Athens, Greece; ^dDepartment of Dermatology, Venereology and Allergy, Medical University Innsbruck, Innsbruck, Austria; ^eUniv. Bordeaux, INSERM, Institut Bergonié, BPH, U1219, CIC-EC 1401, Bordeaux, France; ^fINRIA SISTM Team, Talence, France; ^gCHU de Bordeaux, Service d'information médicale, INSERM, Institut Bergonié, CIC-EC 1401, Bordeaux, France; ^hDepartment I for Internal Medicine, University Hospital of Cologne, Cologne, Germany; ⁱSorbonne Université, INSERM, Institut Pierre Louis d'Épidémiologie et de Santé Publique (IPLESP), Paris, France; ^jDepartment of Public Health, AP-HP, St Antoine Hospital, Paris, France; ^kInfectious Diseases Service, Lausanne University Hospital and University of Lausanne, Lausanne, Switzerland; ^lServicio de Medicina Interna, Hospital Universitario de Sierrallana, Torrelavega, Cantabria, Spain; ^mDepartment of Health Sciences, Clinic of Infectious and Tropical Diseases, University of Milan, Milan, Italy; ⁿCentre d'Estudis Epidemiològics sobre la SIDA i les ITS de Catalunya (CEEISCAT), Institut de Recerca en Ciències de la Salut Germans Trias i Pujol (IGTP), Campus de Can Ruti, Badalona, Catalonia, Spain; ^oStichting HIV Monitoring, Amsterdam, The Netherlands; ^pCentro Nacional de Epidemiología, Instituto de Salud Carlos III, Madrid, Spain; ^qCIBER de Enfermedades Infecciosas, Instituto de Salud Carlos III, Madrid, Spain; ^rNational Institute for Health and Care Research Bristol Biomedical Research Centre, Bristol, United Kingdom; ^sHealth Data Research UK South-West, Bristol, United Kingdom; ^tMRC Centre for Global Infectious Disease Analysis, School of Public Health, Imperial College London, London, United Kingdom; ^uCenter for Communicable Disease Dynamics, Department of Epidemiology, Harvard T.H. Chan School of Public Health, Boston, MA; and ^vCentre for Infectious Disease Epidemiology and Research, School of Public Health, University of Cape Town, Cape Town, South Africa.

The ART-CC is funded by the US National Institute on Alcohol Abuse and Alcoholism (U01-AA026209). J.A.C.S. is funded by the National Institute for Health Research Senior Investigator award NF-SI-0611-10168. A.T. is funded by the Wellcome Trust under a Sir Henry Wellcome Postdoctoral Fellowship (222770/Z/21/Z). Funding for the individual ART-CC cohorts included in this analysis was from Alberta Health, Gilead, ANRS (France Recherche Nord & Sud Sida-HIV Hépatites), the French Ministry of Health, the Austrian Agency for Health and Food Safety (AGES), Stichting HIV Monitoring, the Dutch Ministry of Health, Welfare and Sport through the Centre for Infectious Disease Control of the National Institute for Public Health and the Environment, the TP-HIV by the German Centre for Infection Research (DZIF) (NCT02149004), the Instituto de Salud Carlos III through the Red Temática de Investigación Cooperativa en Sida (RD06/006, RD12/0017/0018 and RD16/0002/0006) as part of the Plan Nacional I + D + i and cofinanced by the ISCIII-Subdirección General de Evaluación and the Fondo Europeo de Desarrollo Regional (FEDER), ViiV Healthcare, Preben og Anna Simonsens Fond, ANRS-Maladies infectieuses émergentes, Institut National de la Santé et de la Recherche Médicale (INSERM), BMS, Janssen, MSD, the US National Institute on Alcohol Abuse and Alcoholism (U01-AA026230), the Spanish Ministry of Health, the Swiss National Science Foundation (Grant 33CS30_134277), CFAR Network of Integrated Clinical Systems (1R24 AI067039-1, P30-AI-027757), the US Department of Veterans Affairs, the US National Institute on Alcohol Abuse and Alcoholism (U01-AA026224, U01-AA026209, U24-AA020794), the VHA Office of Research and Development, and US National Institute of Allergy and Infectious Diseases (Tennessee Center for AIDS Research: P30 AI110527).

R.G.'s institution has received grants from UNAIDS and the Bill and Melinda Gates Foundation. N.P. has received grants unrelated to this study and paid to his institution from Gilead Sciences Hellas and ECDC. R.Z. has not received honoraria in the past 3 years. J.V. has personal fees from Merck/MSD, Gilead, Pfizer, Astellas Pharma, Basilea, German Centre for Infection Research (DZIF), University Hospital Freiburg/Congress and Communication, Academy for Infectious Medicine, University Manchester, German Society for Infectious Diseases (DGI), Ärztekammer Nordrhein, University Hospital Aachen, Back Bay Strategies, and German Society for Internal Medicine (DGIM) and grants from Merck/MSD, Gilead, Pfizer, Astellas Pharma, Basilea, German Centre for Infection Research (DZIF), German Federal Ministry of Education and Research (BMBF), (PJ-T: DLR), University of Bristol, and Rigshospitalet Copenhagen. M.C.'s institution received research grants and expert opinion fees from Gilead, MSD, and ViiV. R.T. has received grant funding from Gilead, Janssen, and ViiV unrelated to this work. J.W.E. reports personal fees from Oxford Policy Management. The remaining authors have no funding or conflicts of interest to disclose.

Supplemental digital content is available for this article. Direct URL citations appear in the printed text and are provided in the HTML and PDF versions of this article on the journal's Web site (www.jaids.com).

Correspondence to: Adam Trickey, PhD, Population Health Sciences, Oakfield House, Oakfield Grove, University of Bristol, Bristol BS8 2BN, United Kingdom (e-mail: adam.trickey@bristol.ac.uk).

Copyright © 2023 The Author(s). Published by Wolters Kluwer Health, Inc. This is an open access article distributed under the Creative Commons Attribution License 4.0 (CCBY), which permits unrestricted use, distribution, and reproduction in any medium, provided the original work is properly cited.

starting ART from 1996 to 2020 in the Antiretroviral Therapy Cohort Collaboration (ART-CC)'s European cohorts.

Results: In the ART-CC, 11,504 of 162,835 PLHIV died. Between 1996–1999 and 2016–2020, AIDS-related mortality in the ART-CC decreased from 8.8 (95% CI: 7.6 to 10.1) to 1.0 (0.9–1.2) and from 5.9 (4.4–8.1) to 1.1 (0.9–1.4) deaths per 1000 person-years among men and women, respectively. Non-AIDS-related mortality decreased from 9.1 (7.9–10.5) to 6.1 (5.8–6.5) and from 7.0 (5.2–9.3) to 4.8 (4.3–5.2) deaths per 1000 person-years among men and women, respectively. Adjusted all-cause mortality rates in Spectrum among men were near ART-CC estimates for 2016–2020 (Spectrum: 7.02–7.47 deaths per 1000 person-years) but approximately 20% lower in women (Spectrum: 4.66–4.70). Adjusted excess mortality rates in Spectrum were 2.5-fold higher in women and 3.1–3.4-fold higher in men in comparison to the ART-CC's AIDS-specific mortality rates.

Discussion: Spectrum's all-cause mortality estimates among PLHIV are consistent with age/country-controlled mortality observed in ART-CC, with some underestimation of mortality among women. Comparing results suggest that 60%–70% of excess deaths among PLHIV on ART in Spectrum are from non-AIDS causes.

Key Words: AIDS mortality, excess mortality, modelling, parameters, Europe, high income

(*J Acquir Immune Defic Syndr* 2024;95:S89–S96)

INTRODUCTION

Before combination antiretroviral therapy (ART) was introduced across multiple countries in 1996, persons living with HIV (PLHIV) in Western and Central Europe and North America (WCENA) had very high rates of mortality, mostly because of AIDS.^{1–3} Mortality rates have subsequently decreased as PLHIV have started ART and successfully suppressed viral replication, which has reduced the risk of AIDS and death.⁴ Decreasing on-ART mortality rates among PLHIV in WCENA has meant that PLHIV in those settings are aging and there is less AIDS-related mortality, whereas mortality because of other causes that are increasingly common in the aging general population (eg, cardiovascular disease, cancer) is increasing.⁵ Among PLHIV in WCENA, substance use and comorbidities such as hepatitis C virus are more common than in the general population, so there are increased mortality rates because of such non-AIDS-related causes.⁶

Most countries prepare annual estimates of key HIV indicators, including HIV-related deaths, using the Spectrum model.⁷ Spectrum estimates are used for national and global planning and are published annually by the UNAIDS.⁸ Estimated numbers of deaths from any cause among PLHIV on ART depend on routinely collected program data on national ART patient cohort sizes, prevailing rates of mortality from HIV-unrelated causes,⁹ and input rates of excess mortality among PLHIV on ART. Recommended default excess mortality rates were estimated from treatment cohort studies,^{10,11} which are commissioned by the UNAIDS for use in Spectrum. Spectrum estimates of excess deaths among PLHIV on or off ART are often reported as

HIV-related or AIDS-related deaths,¹² although, many of these excess deaths are not HIV related.

As mortality rates for PLHIV on ART in high-income countries continue to drop, Spectrum may overestimate on-ART mortality because of using older parameter values, particularly in the WCENA region. Several countries in this region have used lower, non-default HIV-related mortality rates on ART within their Spectrum files to compensate for this overestimation of mortality, which prompted the present review to determine whether these default rates should be revised.

We aimed to review AIDS-related and non-AIDS-related mortality rates over time using data from a collaboration of cohorts of PLHIV on ART in Europe and compare the estimated mortality rates for 2016–2020 with the estimates produced by Spectrum.

METHODS

Antiretroviral Therapy Cohort Collaboration Data

Data were taken from the Antiretroviral Therapy Cohort Collaboration (ART-CC), a collaboration of HIV cohort studies from Europe and North America.¹³ Ethics committees or institutional review boards approved the individual cohorts, which used standardized data collection methods and regularly followed up patients. Cohorts gathered information on mortality through linkage with vital statistics agencies and hospitals or physician report, and the active follow-up of participants. For these analyses, European ART-CC cohorts were included if they had assigned a cause to $\geq 70\%$ of deaths among PLHIV who were eligible to be included in the ART-CC baseline data set; 11 of 13 of the ART-CC's European cohorts were included. The included cohorts are listed in Appendix Table 1, Supplemental Digital Content, <http://links.lww.com/QAI/C187>. Only data from the ART-CC's European cohorts were used and not from the ART-CC's North American cohorts because the North American AIDS Cohort Collaboration on Research and Design was deemed to hold more representative data for PLHIV in North America.¹⁴ The eligibility criteria for PLHIV to be included in the ART-CC baseline data set were having started combination ART (3 drugs or more) with no prior exposure to ART medications when aged ≥ 16 years old and with a CD4 cell count and HIV-1 RNA viral load measurement taken within a window of 3 months before to 1 week after starting combination ART.

We adapted the Cause of Death (CoDe) project protocol¹⁵ to classify causes of death information into a single cause in the HICDEP format (<https://hicdep.org/Wiki/v/10/pt/3/Table/104/FieldID/1321>). Information on cause of death was recorded either as International Classification of Diseases, Ninth Revision (ICD-9) or 10th Revision (ICD-10), or free text. If ICD-9 or ICD-10 codes were available, causes of death were classified by a clinician and a computer algorithm.⁵ When ICD-9 or ICD-10 codes were not available, 2 clinicians independently classified each death. Disagreements between clinicians and/or computer-assigned codes were resolved through panel discussion. Further information on

this process has been detailed elsewhere.¹⁶ For comparison with Spectrum, causes of death were categorized as AIDS related or non-AIDS related. Deaths were coded as AIDS related if there was a serious AIDS defining condition before death and/or a low CD4 count (<100/μL) within a year (18 months if off treatment) of death, and a diagnosis compatible with AIDS as cause of death.⁵ All other deaths, including those of unknown cause, were considered non-AIDS related. The cause of death coding rules is included in the Appendix, Supplemental Digital Content, <http://links.lww.com/QAI/C187>.

The Spectrum Model

The AIDS Impact Module in Spectrum is a compartmental HIV epidemic model that is coupled with a demographic population projection method.^{7,17} For the 2022 HIV estimates round, most countries used demographic inputs to Spectrum, including country-specific life tables, that were derived from the 2019 World Population Prospects.⁹ PLHIV aged 15 years and older are stratified by sex, age, CD4 cell count category (CD4>500, 350–500, 250–349, 200–249, 100–199, 50–99, <50 cells/mm³), and ART status. Excess mortality rates among PLHIV on ART vary by sex, current age (15–24, 25–34, 35–44, ≥45), CD4 category at ART initiation, and time since ART initiation (<6, 6–11, or ≥12 months). Recommended default excess mortality rate inputs among PLHIV on ART were estimated using data on all-cause mortality^{10,11} and subtracting background mortality (population-level average mortality from HIV-unrelated causes) by age, sex, and calendar year.

Spectrum model assumptions are routinely reviewed by the UNAIDS Reference Group on Estimates, Modeling, and Projections.¹⁸ Appendix Table 4, Supplemental Digital Content, <http://links.lww.com/QAI/C187> and the subsequent sections in the appendix review the mortality rates used for PLHIV starting ART with CD4 counts >500 cells/mm³.

Statistical Analyses

ART-CC cohort data were split into calendar periods of follow-up (1996–1999, 2000–2003, 2004–2007, 2008–2011, 2012–2015, and 2016–2020; with follow-up in 2020 ending in April 2020 before the impact of the COVID-19 epidemic), for which we calculated time-updated characteristics for the beginning of each period if the person did not start ART during that period. The characteristics were used to describe the ART-CC population. For comparability with Spectrum, we removed follow-up of PLHIV when they were aged <20 years. We calculated crude rates of AIDS-related and non-AIDS-related mortality per follow-up period, stratified by sex and by time-updated age category. Cohort data analyses were performed in Stata v17.1 (StataCorp, 2021) (Table 1).

We calculated equivalent population mortality rates stratified by sex and age (in 5-year categories) for each follow-up period to correspond with the country mix in the ART-CC data. Mortality rates for each age and sex group were retrieved for each country included in the analyses using

data from mortality.org for 2014.¹⁹ The retrieved country-specific mortality rates for each age/sex group were then multiplied by the proportion of PLHIV in each age/sex group from the country that made up the entire ART-CC sample for each follow-up period.

Spectrum Mortality Rates on ART

We used national Spectrum projections to calculate all-cause mortality rates among PLHIV on ART and in the general population for comparison to ART-CC estimates. We used national projections developed for the 2022 HIV estimates round for the 8 countries with ART-CC cohorts. Five projections (France, Greece, Italy, Netherlands, Switzerland) were shared by national HIV estimate teams and are available from the UNAIDS on request.²⁰ Three other projections (Austria, Germany, Spain) contributed to regional and global UNAIDS analyses but are not publicly available. Five of these projections (France, Greece, Italy, Netherlands, and Spain) used nondefault mortality rate inputs that were lower than regional Spectrum defaults. To assess the adequacy of regional defaults, projections were modified for this analysis to use Spectrum’s regional default on-ART mortality rates. Rates were calculated using Spectrum estimates for 2016–2019 because ART-CC follow-up during 2020 was minimal.

We report all-cause mortality rates $m^A(t; s)$ for people on ART aged 20 years and above:

$$m^A(t; s) = \frac{\sum_k \sum_{x=20}^{80+} \left[\frac{D^A(t; k, s, x)}{N^A(t; k, s, x)} + \frac{D^B(t; k, s, x)}{N(t; k, s, x)} \right] W^A(t; k, s, x)}{\sum_k \sum_{x=20}^{80+} W^A(t; k, s, x)}$$

Spectrum estimates of excess deaths on ART (D^A), HIV-unrelated deaths in the overall population regardless of HIV status (D^B), and population sizes on ART (N^A) or overall (N) were stratified by year t , country k , sex s , and age x . The ratio D^A/N^A reflects excess mortality among PLHIV on ART, whereas D^B/N reflects HIV-unrelated mortality. To account for differences in demographic characteristics between Spectrum and the ART-CC, we evaluated 3 sets of weights W^A : Spectrum’s projected population on ART (1) as-is or adjusted to match the observed ART-CC distribution of patients (2) by age, or (3) by age and country.

We calculated equivalent general population all-cause mortality rates by sex $m(t; s)$ analogously:

$$m(t; s) = \frac{\sum_k \sum_{x=20}^{80+} \frac{D^A(t; k, s, x) + D^H(t; k, s, x) + D^B(t; k, s, x)}{N(t; k, s, x)} W^A(t; k, s, x)}{\sum_k \sum_{x=20}^{80+} W^A(t; k, s, x)}$$

Here, $D^H(t; k, s, x)$ are HIV-related deaths among PLHIV not on ART.

We calculated model all-cause mortality rates in R v4.2.2 using estimated population sizes and numbers of deaths extracted from Spectrum files submitted for the 2022 HIV estimates round.

TABLE 1. Time-Updated Characteristics of PLHIV on ART in ART-CC Analyses

Characteristics N	Follow-up Years					
	1996–1999 19,271	2000–2003 40,496	2004–2007 63,484	2008–2011 93,394	2012–2015 119,912	2016–2020 126,857
Median age (IQR), yr	35 (31–42)	36 (31–43)	39 (33–45)	41 (34–47)	42 (35–50)	45 (36–52)
Sex/acquisition group, n (%)						
MSM	6612 (34.3)	12,684 (31.3)	20,845 (32.8)	36,520 (39.1)	53,280 (44.4)	58,784 (46.3)
Male; IDU	3232 (16.8)	5541 (13.7)	6832 (10.8)	7490 (8.0)	7530 (6.3)	6638 (5.2)
Female; IDU	919 (4.8)	1589 (3.9)	1949 (3.1)	2119 (2.3)	2118 (1.8)	1838 (1.5)
Male; heterosexual	3569 (18.5)	8371 (20.7)	13,324 (21.0)	18,985 (20.3)	23,503 (19.6)	24,461 (19.3)
Female; heterosexual	3430 (17.8)	9083 (22.4)	15,867 (25.0)	22,354 (23.9)	26,448 (22.1)	27,750 (21.9)
Either sex; other/unknown	1509 (7.8)	3228 (8.0)	4667 (7.4)	5926 (6.4)	7033 (5.9)	7386 (5.8)
ART naive, n (%)*	19,271 (100.0)	22,573 (55.7)	26,870 (42.3)	35,916 (38.5)	36,648 (30.6)	20,320 (16.0)
CD4 cell count, cells (%)						
0–199	8205 (42.6)	14,978 (37.0)	17,179 (27.1)	16,061 (17.2)	13,850 (11.6)	9390 (7.4)
200–349	4827 (25.1)	10,294 (25.4)	17,655 (27.8)	23,880 (25.6)	19,083 (15.9)	13,335 (10.5)
350–499	3484 (18.1)	6005 (14.8)	10,286 (16.2)	20,533 (22.0)	26,680 (22.3)	20,724 (16.3)
≥500	2755 (14.3)	8068 (19.9)	14,784 (23.3)	27,127 (29.1)	52,747 (44.0)	73,976 (58.3)
Missing	0 (0.0)	1151 (2.8)	3580 (5.6)	5793 (6.2)	7552 (6.3)	9432 (7.4)
Country, n (%)						
Austria	413 (2.1)	997 (2.5)	1703 (2.7)	2639 (2.8)	3518 (2.9)	3664 (2.9)
France	10,401 (53.6)	21,509 (52.9)	32,676 (51.3)	45,707 (48.8)	56,013 (46.6)	59,668 (46.9)
Germany	173 (0.9)	435 (1.1)	779 (1.2)	1252 (1.3)	1524 (1.3)	1423 (1.1)
Greece	288 (1.5)	682 (1.7)	1266 (2.0)	2515 (2.7)	3738 (3.1)	3342 (2.6)
Italy	1585 (8.2)	2386 (5.9)	2537 (4.0)	3451 (3.7)	6421 (5.3)	8421 (6.6)
Netherlands	1656 (8.5)	3876 (9.5)	6634 (10.4)	10,180 (10.9)	13,680 (11.4)	14,656 (11.5)
Spain	3134 (16.2)	7673 (18.9)	13,791 (21.7)	22,014 (23.5)	28,527 (23.7)	29,272 (23.0)
Switzerland	1621 (8.4)	2938 (7.2)	4098 (6.4)	5636 (6.0)	6491 (5.4)	6411 (5.0)

IDU, injecting drug use; IQR, interquartile range; MSM, men who have sex with men.

*ART naive when first contributing follow-up to the period.

Sensitivity Analysis

To investigate the effect of removing the ART-CC inclusion criteria on the age of the cohort, we calculated the median age across all PLHIV alive as of January 1, 2016, that the ART-CC holds data on. PLHIV from the same cohorts included in the main analysis were again included but CD4 count and viral load values around ART start, prior ART status, and loss-to-follow-up before January 1, 2016, were disregarded.

RESULTS

Characteristics of ART-CC Population

Overall, follow-up from 162,835 PLHIV was included in the analysis, with the number of PLHIV in follow-up increasing from 19,271 in 1996–1999 to 126,857 in 2016–2020. The median age of PLHIV at the start of the follow-up period was 35 years (interquartile range: 31–42 years) in 1996–1999, increasing to 45 years (36–52 years) in 2016–2020. There was a smaller increase in age when starting ART from 35 years (31–42 years) in 1996–1999 to 38 years (30–47 years) in 2016–2020. In a sensitivity analysis removing the ART-CC eligibility criteria, the median age of the cohort increased to 48 years (39–55 years) in 2016–2020.

The percentage of PLHIV in follow-up who acquired HIV through injecting drug use decreased over time, whereas the percentage of men who acquired HIV through sex with men increased. The percentage of PLHIV who started each follow-up period as ART naive reduced over time from 100.0% in 1996–1999 to 16.0% in 2016–2020, whereas the percentage of PLHIV who started each follow-up period with CD4 counts of 0–199 decreased from 42.6% in 1996–1999 to 7.4% in 2016–2020.

Spectrum projected a cumulative 1.95 million person-years on ART during 2016–2019. Men accounted for 74% of person-years lived by PLHIV. PLHIV on ART were older in the Spectrum projections than in the ART-CC (Fig. 1). The median age of PLHIV on ART was 53 years for men and 52 years for women, about 7 years older than the ART-CC median for 2016–2020.

AIDS and Non-AIDS Mortality in the ART-CC

There were 11,504 deaths in 1,100,155 person-years of follow-up, of which 2648 deaths (23.0%) were classified as AIDS related and 8856 (77.0%) were classified as non-AIDS related. In 1996–1999, 226 of 466 deaths (48.5%) were classified as AIDS related, compared with 359 of 2348 deaths (15.3%) in 2016–2020.

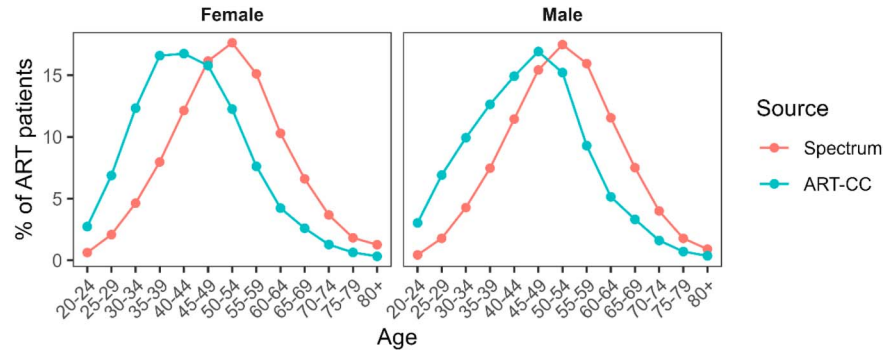


FIGURE 1. Age distribution of PLHIV on ART in the ART-CC and Spectrum, 2016–2019.

Table 2 shows cause-specific mortality rates over time for men and women, whereas Appendix Tables 2 and 3, Supplemental Digital Content, <http://links.lww.com/QAI/C187> show the age-stratified cause-specific mortality rates over 2016–2020 for men and women on ART, respectively. Both AIDS-related and non-AIDS-related mortality rates declined between 1996–1999 and 2016–2020 for men and women on ART. The largest decreases were seen for AIDS-related mortality among men, from 8.8 (95% confidence interval: 7.6–10.1) to 1.0 (0.9–1.2) deaths per 1000 person-years, but AIDS-related mortality also decreased substantially for women, from 5.9 (4.4–8.1) to 1.1 (0.9–1.4) deaths per 1000 person-years. During 1996–1999, approximately half of mortality among men and women on ART was classified as AIDS related, with rates of non-AIDS mortality per 1000 person-years of 9.1 (7.9–10.5) and 7.0 (5.2–9.3) among men and women, respectively. A far lower percentage of mortality was classified as AIDS related in 2016–2020, with non-AIDS mortality rates having fallen more slowly than AIDS-related mortality to 6.1 (5.8–6.5) and 4.8 (4.3–5.2) deaths per 1000 person-years among men and women on ART, respectively.

As the ART-CC population aged during this time, mortality rates in equivalent aged-matched general population cohorts of men and women increased between 1996–1999 and 2016–2020, from 1.8 to 4.1 and from 0.8 to 1.9 deaths per 1000 person-years in men and women, respectively.

Comparison of Spectrum to the ART-CC

Spectrum estimated that 8200 excess deaths occurred among PLHIV on ART during 2016–2019. All-cause mortality rates on ART increased from 11.15 to 11.39

deaths per 1000 person-years in men and from 7.51 to 7.97 deaths per 1000 person-years in women during 2016–2019 (Fig. 2), higher than contemporary rates in ART-CC by 28%–36% in women and by 56%–59% in men. Compared with unadjusted rates, adjustment to the ART-CC population by age reduced all-cause mortality rates on ART by 32%–40% and by 33%–42% when adjusted by both age and country. After these adjustments, all-cause mortality rates in Spectrum among men were close to ART-CC estimates for 2016–2020 (Spectrum: 7.02–7.47 deaths per 1000 person-years; ART-CC 7.2) but 20% lower in women (Spectrum: 4.66–4.70; ART-CC 5.9 deaths per 1000 person-years).

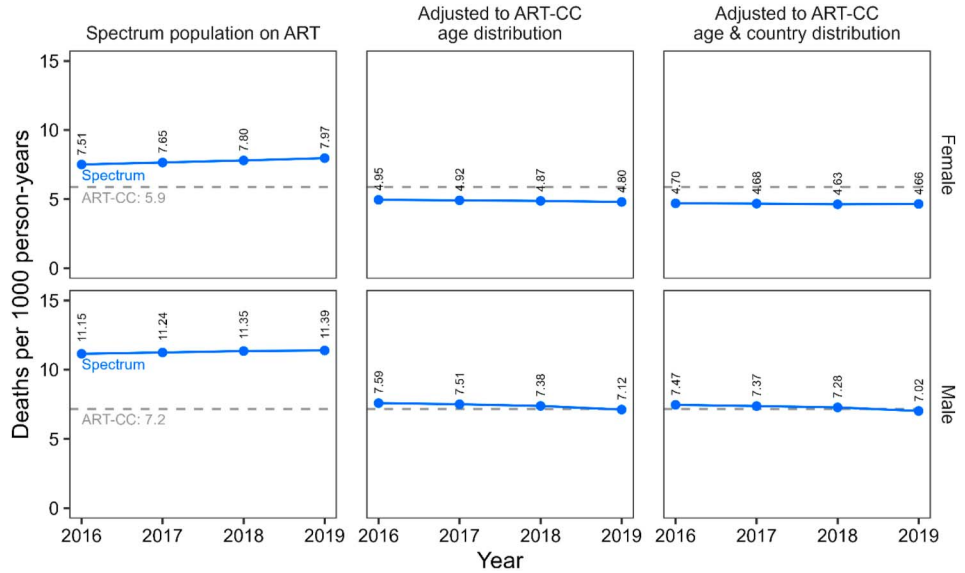
Rates of excess mortality (ie, with HIV-unrelated mortality excluded) among PLHIV on ART in Spectrum ranged from 4.23 to 4.45 and 3.71–3.74 deaths per 1000 person-years in men and women, respectively (Fig. 3). Excess mortality rates decreased by 23%–26% after adjustment to the ART-CC population by age and country. After this adjustment, excess mortality rates in Spectrum were 2.5-fold in women and 3.1- to 3.4-fold higher in men in comparison to AIDS-specific mortality rates in the ART-CC (women, 1.1; men, 1.0 deaths per 1000 person-years).

Differing assumptions about mortality in the general population may contribute to differences in all-cause mortality rates on ART between Spectrum and the ART-CC. General population all-cause mortality rates in Spectrum were higher than general population estimates corresponding to the demographics of the ART-CC by 99%–122% in men and 64%–75% in women (see Figure 1, Supplemental Digital Content, <http://links.lww.com/QAI/C187>). These general population mortality rates were similar after adjusting Spectrum estimates to ART-CC age and country characteristics.

TABLE 2. AIDS and Non-AIDS Mortality Rates per 1000 Person-Years in the ART-CC Over Time, Stratified by Sex

Periods	AIDS Mortality		Non-AIDS Mortality		General Population	
	Men	Women	Men	Women	Men	Women
1996–1999	8.8 (7.6–10.1)	5.9 (4.4–8.1)	9.1 (7.9–10.5)	7.0 (5.2–9.3)	1.8	0.8
2000–2003	5.1 (4.6–5.6)	3.6 (3.0–4.4)	9.8 (9.2–10.5)	6.2 (5.3–7.1)	2.1	0.8
2004–2007	3.0 (2.7–3.3)	1.8 (1.5–2.2)	8.9 (8.4–9.4)	5.0 (4.4–5.6)	2.5	0.9
2008–2011	2.1 (1.9–2.4)	1.3 (1.1–1.6)	7.6 (7.2–8.0)	4.3 (3.9–4.8)	2.9	1.1
2012–2015	1.4 (1.3–1.6)	1.2 (1.0–1.5)	6.8 (6.5–7.1)	4.7 (4.3–5.1)	3.3	1.5
2016–2020	1.0 (0.9–1.2)	1.1 (0.9–1.4)	6.1 (5.8–6.5)	4.8 (4.3–5.2)	4.1	1.9

FIGURE 2. Comparing all-cause mortality rates per 1000 person-years for PLHIV on ART calculated for the ART-CC and Spectrum, 2016–2019. Spectrum mortality rates are calculated for either the modeled ART population or adjusted to match ART-CC characteristics by age alone or age and country simultaneously. Spectrum mortality rates are calculated for each year, whereas ART-CC mortality rates are calculated for the overall period.

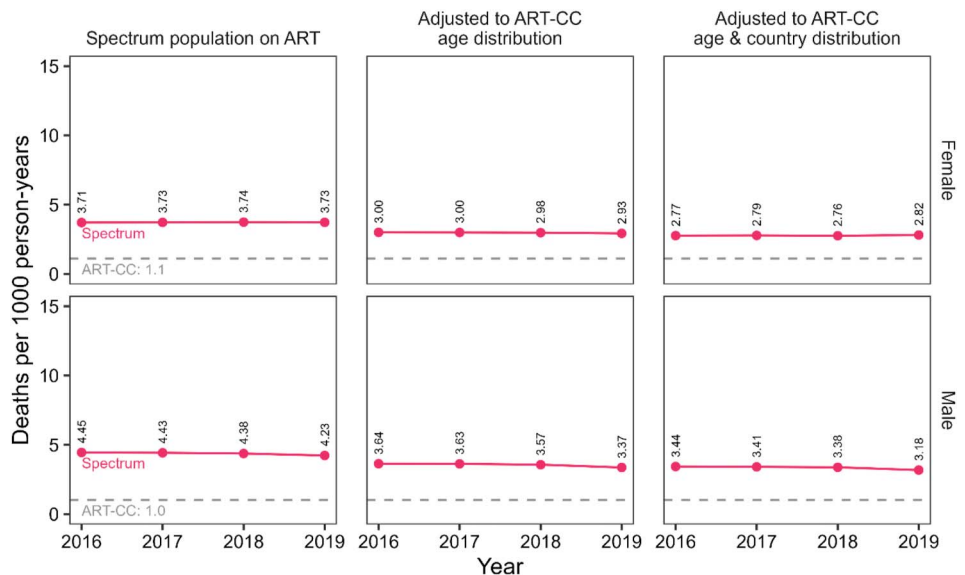


DISCUSSION

Mortality on ART in WCENA has decreased between 1996 and 2020 and non-AIDS mortality now makes up most deaths for PLHIV on ART. All-cause mortality rates among PLHIV on ART estimated by Spectrum for 2016–2019 are 28%–59% higher than contemporary ART-CC estimates. This raised concerns that Spectrum estimates may not reflect the decreasing mortality among PLHIV observed in the ART-CC, which was addressed in some national HIV estimates by reducing age-specific mortality rate inputs to Spectrum. However, most of the difference in overall all-cause mortality between ART-CC and Spectrum is because of the age distributions of PLHIV on ART, not differences in age-specific mortality. The median age of ART patients in Spectrum was approximately 7 years older than in those in

ART-CC during 2016–2019. National HIV estimates teams are encouraged to validate the modeled age distribution of PLHIV on ART against routine program data when preparing their HIV estimates and to adjust model inputs to reduce discrepancies. Nevertheless, we were not able to determine whether the modeled age distribution in Spectrum was representative of national treatment cohorts because these data were not available to us. This knowledge gap limits our ability to determine what changes to Spectrum might be needed given the observed differences in age difference excess mortality rates in Spectrum were 2.5-fold in women and 3.1–3.4-fold higher in men in comparison to AIDS-specific mortality rates in the ART-CC. This suggests that a considerable proportion of the excess mortality in Spectrum

FIGURE 3. Comparing excess mortality rates per 1000 person-years for PLHIV on ART in Spectrum to AIDS-specific mortality rates for the ART-CC, 2016–2019. Spectrum mortality rates are calculated for either the modeled ART population or adjusted to match ART-CC characteristics by age alone or age and country simultaneously.



Downloaded from http://journals.lww.com/jaids by BMDMfsePHKav1zEoum1IQIN4a+kUJhEZgpsiHo4XM0hCycwCX1A WnYQp/ID313D00dR/TVSFAC/3VCA/0AVpDd8kKGV0Ymy+78= on 02/20/2024

is because of non-AIDS causes. For the 2023 HIV estimates round, we updated Spectrum to allow direct comparison of estimated all-cause deaths on ART to national vital registration data, and regional HIV estimates workshops emphasized performing validation checks. In addition, in the latest version of Spectrum, the mortality assumptions for PLHIV starting ART with CD4 count of >500 cells per cubic millimeter will be same as for PLHIV starting with CD4 count of 350–499 cells per cubic millimeter.

Comparison With Other Literature

That mortality because of non-AIDS-related causes among PLHIV on ART in high-income countries now forms the majority of deaths has been detailed elsewhere. A systematic review and meta-analysis of studies between 2005 and 2016 by Farahani et al²¹ found that in high-income countries, 54% (95% CI: 46% to 62%) of mortality among PLHIV on ART was because of non-AIDS causes. A Spanish population-based cohort of PLHIV, including those not on ART, found that all-cause mortality decreased from 1999 to 2018, with the decrease driven by AIDS-related mortality, whereas non-AIDS mortality remained stable and, therefore, accounted for a higher proportion of mortality.²² A study among PLHIV on ART in British Columbia, Canada, observed reductions in all-cause, AIDS-related, and certain types of non-AIDS-related mortality over calendar time from 2001 to 2012, with non-AIDS-related mortality accounting for most deaths by 2011–2012.²³ Reductions in AIDS-related mortality are often attributed to the increased effectiveness and availability of ART; however, deaths described as non-AIDS-related also declined when ART became available.¹ PLHIV on ART continue to have a higher prevalence of many non-AIDS-related comorbidities than the general population.²⁴ This is partly because of lifestyle factors, such as a higher prevalence of smoking among PLHIV.²⁵ However, the ART-CC has previously detailed that increased non-AIDS mortality is seen among PLHIV on ART that have AIDS-defining events.²⁶ In addition, markers of inflammation that are associated with increased non-AIDS-related mortality are often elevated among PLHIV, even when on ART,^{27,28} which indicates that HIV also leads through multiple mechanisms to an increase in what is described as non-AIDS mortality.

Strengths and Limitations

A strength of these analyses was the use of a large, multicountry data set of PLHIV on ART that should be quite generalizable to the populations of PLHIV on ART in Western European countries. Previous research comparing European HIV cohort data with surveillance system data found that although the cohorts were generally representative of the HIV-diagnosed populations in the surveillance system, some important subgroups, such as PLHIV aged ≥ 55 years, were underrepresented.²⁹ Although the population included should be quite generalizable to these countries, the ART-CC inclusion criteria (PLHIV starting combination ART as ART naive with CD4 counts and viral

load measurements within a month of ART initiation¹³) may mean that the population used here is slightly younger than the overall populations on ART in these countries. We investigated this in a sensitivity analysis and found that when removing these inclusion criteria, a 4-year difference remained in comparison to Spectrum. However, this could have been affected by the individual cohorts selecting records of PLHIV to be sent to the ART-CC that they believed matched the ART-CC's eligibility criteria, that is, they were not ART naive when starting combination ART. Another strength of these analyses is the use of detailed data on causes of death. However, ascertaining a single cause of death can be complicated and was not possible for approximately 20% of the deaths, particularly in cases where there were multiple major comorbidities, but these cases should mostly be where there are competing non-AIDS conditions, so should not affect the interpretation of this analysis. Interpreting mortality rates for PLHIV in comparison with an age-, sex-, and country-matched general population can be difficult because of differences in other confounders, such as the prevalence of comorbidities and substance use issues. These country-matched general population mortality rates were taken for 2014 rather than using separate rates for each calendar year period. However, although mortality rates in WCENA countries between 1996 and 2020 will have decreased over this period, the magnitude will have been small compared with the changes in mortality rates among PLHIV.

Implications for National HIV Estimates Using Spectrum

Reported estimates of AIDS-related deaths prepared using Spectrum should be clarified. HIV-related mortality rate inputs to Spectrum reflect excess mortality among people living with HIV, but the corresponding deaths estimates are usually reported as AIDS-related deaths, which might be interpreted as deaths caused by AIDS.¹² Differing age distributions between the ART-CC and Spectrum inputs caused differences in the overall mortality rates. However, we found that Spectrum produces estimates of all-cause mortality among PLHIV that are consistent with mortality observed in ART-CC after controlling for age and country. We found that a substantial proportion of excess mortality among PLHIV on ART in Europe is from non-AIDS causes and that excess mortality rates among PLHIV on ART in Spectrum are 2.5–3.4-fold higher than AIDS-related deaths rates in the ART-CC. This suggests that 60%–70% of excess deaths among PLHIV on ART in Spectrum are from non-AIDS causes. Thus, misinterpreting excess deaths as AIDS-related deaths risks overstating the numbers of deaths that might be prevented through ART, although ART should also reduce some deaths that are currently classified as non-AIDS mortality. Misinterpreting excess deaths as AIDS-related could also underemphasize other interventions targeted at reducing the apparent burden of non-AIDS mortality associated with HIV. Second, different age distributions of the PLHIV on ART was a major reason for differences in crude mortality among PLHIV between ART-CC and modeled

Spectrum estimates. Estimate teams should prioritize review demographic characteristics of modeled HIV populations to ensure accurate HIV estimates.

ACKNOWLEDGMENTS

The authors would like to thank our funders (US NIAAA) as well as all the patients and the clinical teams associated with the participating cohort studies.

REFERENCES

- Vyas KJ, Marconi VC, Moanna A, et al. Trends in cause-specific mortality among Veterans with HIV: a 35-year (1982-2016) analysis of the HIV Atlanta VA cohort study. *J Acquir Immune Defic Syndr*. 2023; 92:17–26.
- Krentz HB, Kliever G, Gill MJ. Changing mortality rates and causes of death for HIV-infected individuals living in Southern Alberta, Canada from 1984 to 2003. *HIV Med*. 2005;6:99–106.
- Mocroft A, Vella S, Benfield TL, et al. Changing patterns of mortality across Europe in patients infected with HIV-1. EuroSIDA Study Group. *Lancet*. 1998;352:1725–1730.
- Antiretroviral Therapy Cohort Collaboration. Survival of HIV-positive patients starting antiretroviral therapy between 1996 and 2013: a collaborative analysis of cohort studies. *Lancet HIV*. 2017;4:E349–e356.
- Ingle SM, May MT, Gill MJ, et al. Impact of risk factors for specific causes of death in the first and subsequent years of antiretroviral therapy among HIV-infected patients. *Clin Infect Dis*. 2014;59:287–297.
- Marcus JL, Leyden WA, Alexeff SE, et al. Comparison of overall and comorbidity-free life expectancy between insured adults with and without HIV infection, 2000–2016. *JAMA Netw Open*. 2020;3:e207954.
- Stover J, Glaubius R, Kassinjee R, et al. Updates to the Spectrum/AIM model for the UNAIDS 2020 HIV estimates. *J Int AIDS Soc*. 2021; 24(suppl 5):e25778.
- Joint United Nations Programme on HIV/AIDS. *Dangerous Inequalities: World AIDS Day Report 2022*. Geneva, Switzerland: UNAIDS; 2022. Available at: https://www.unaids.org/sites/default/files/media_asset/dangerous-inequalities_en.pdf. Accessed September 11, 2023.
- United Nations, Department of Economic and Social Affairs, Population Division. *World Population Prospects 2019: Volume II: Demographic Profiles*; 2019. Available at: <https://population.un.org/wpp/>.
- Trickey A, van Sighem A, Stover J, et al. Parameter estimates for trends and patterns of excess mortality among persons on antiretroviral therapy in high-income European settings. *AIDS*. 2019; 33(suppl 3):S271–S281.
- Johnson LF, Anderegg N, Zaniewski E, et al. Global variations in mortality in adults after initiating antiretroviral treatment: an updated analysis of the International epidemiology Databases to Evaluate AIDS cohort collaboration. *AIDS*. 2019;33(suppl 3):S283–S294.
- UNAIDS. *AIDSinfo 2023*. Available at: <https://aidsinfo.unaids.org/>. Accessed September 11, 2023.
- May MT, Ingle SM, Costagliola D, et al. Cohort profile: antiretroviral therapy cohort collaboration (ART-CC). *Int J Epidemiol*. 2014;43: 691–702.
- Gange SJ, Kitahata MM, Saag MS, et al. Cohort profile: the North American AIDS Cohort Collaboration on Research and Design (NA-ACCORD). *Int J Epidemiol*. 2007;36:294–301.
- Kowalska JD, Friis-Møller N, Kirk O, et al. The coding causes of death in HIV (CoDe) project initial results and evaluation of methodology. *Epidemiology*. 2011;22:516–523.
- Trickey A, May MT, Vehreschild J, et al. Cause-specific mortality in HIV-positive patients who survived ten years after starting antiretroviral therapy. *PLoS One*. 2016;11:e0160460.
- Avenir Health. *Spectrum Manual: Spectrum System of Policy Models*; 2022. Available at: <https://avenirhealth.org/Download/Spectrum/Manuals/SpectrumManualE.pdf>. Accessed September 11, 2023.
- Projections URGoEMA. *UNAIDS Reference Group on Estimates Modelling and Projections*. Available at: <https://epidem.org/>. Accessed September 11, 2023.
- Human Mortality Database, Max Planck Institute for Demographic Research (Germany), University of California BU, French Institute for Demographic Studies (France). *Human Mortality Database 2022*. Available at: <https://www.mortality.org>. Accessed September 11, 2023.
- UNAIDS. *Spectrum File Request*. Available at: <https://hivtools.unaids.org/spectrum-file-request/>. Accessed September 11, 2023.
- Farahani M, Mulinder H, Farahani A, et al. Prevalence and distribution of non-AIDS causes of death among HIV-infected individuals receiving antiretroviral therapy: a systematic review and meta-analysis. *Int J STD AIDS*. 2017;28:636–650.
- Fontela C, Aguinaga A, Moreno-Iribas C, et al. Trends and causes of mortality in a population-based cohort of HIV-infected adults in Spain: comparison with the general population. *Sci Rep*. 2020;10:8922.
- Cheung CC, Ding E, Sereda P, et al. Reductions in all-cause and cause-specific mortality among HIV-infected individuals receiving antiretroviral therapy in British Columbia, Canada: 2001–2012. *HIV Med*. 2016; 17:694–701.
- Guaraldi G, Orlando G, Zona S, et al. Premature age-related comorbidities among HIV-infected persons compared with the general population. *Clin Infect Dis*. 2011;53:1120–1126.
- De Socio GV, Pasqualini M, Ricci E, et al. Smoking habits in HIV-infected people compared with the general population in Italy: a cross-sectional study. *BMC Public Health*. 2020;20:734.
- Pettit AC, Giganti MJ, Ingle SM, et al. Increased non-AIDS mortality among persons with AIDS-defining events after antiretroviral therapy initiation. *J Int AIDS Soc*. 2018;21, e25031.
- Deeks SG, Tracy R, Douek DC. Systemic effects of inflammation on Health during chronic HIV infection. *Immunity*. 2013;39:633–645.
- Hsu DC, Sereti I. Serious non-AIDS events: therapeutic targets of immune activation and chronic inflammation in HIV infection. *Drugs*. 2016;76:533–549.
- Vourli G, Pharris A, Cazein F, et al. Are European HIV cohort data within EuroCoord representative of the diagnosed HIV population? *AIDS*. 2019;33:133–143.