

# Migrant people camps and their environments in Europe

## Methodology, maps and first results from Bosnia and Herzegovina



« This camp is for tourists only » © LF, January 2023



« Lipa camp. Only for migrants » © LF, Feb 2023

# Migrant people camps and their environments in Europe

## Methodology, maps and first results from Bosnia and Herzegovina

### Introduction

- General context
- My questions

### 1) What do we speak about?

- Definitions
- Geographical notions

### 2) How to map the camps?

- Databases
- Difficulties
- First maps

### 3) How to consider their environments? With a laptop...

- Land use land cover
- Indicator of isolation

### 4) How to consider their environments? On the field...

- In BiH with No Name Kitchen
- Interviews and visits
- Mapping hidden places and keeping tracks

# Introduction : borders and camps in Europe

*"Borders mark the separations between different worlds, between people, between "us" and "them", between cultures and ideas; although they are under control, they are very often transgressed. In fact, ideas, people, money flows, materials (etc.) continue to cross them" (Arnold, Duboin and Misrahi-Barak, 2022)*

- 13% of EU borders are walls (Clochard, 2023), 1000 km between 2015 and 2018 (Mlinarević et Ahmetašević, 2018)
  - Multiple forms and a thickening (Migreurop, 2022) :  
« Visa desks », Externalisation, Biometrisation, Militarisation and Pixellisation (Bigo, Bocco, Piermay, 2009)
  - Will to categorize migrant people and to reduce their mobility (Tazzioli, 2017)
  - Sorting and controls → camps installation (rarely mapped, exclusion, exception) (Agier, 2014)
  - Migrant people find resources to cross these borders (Monsutti, 2021)
- Need to focus on spaces of margins (Dujmović, 2019)



A boat for sale nearby Sarajevo, BiH. © LF, février 2023



A taxi card next to Lipa camp, BiH. © LF, janvier 2023

# Introduction : my questions and hypothesis...

**In Europe, in what contexts and to which extent are the environments involved into the relegation of migrant people camps? How do these camps influence their environments?**

**A : In Europe, the environments are used by the institutions to isolate and relegate « non desirable » migrant people.**

**B : These transformations depend on the contexts of installation and the will of managing organizations.**

**C : Besides the controls, camps remain places where people on the move find crucial resources to keep their autonomy and continue their migration project.**

# 1) What do we speak about ?- Some definitions

## « Camps »

There is no shared official definition.

- Between assistance and control
- Various objectives, forms, lifetimes, regulation of movement
- Rarely mapped, places of exclusion and exception (Michel Agier)

→ Police stations, Airpots, hotspots, reception centres, transit centres, administrative detention centres...

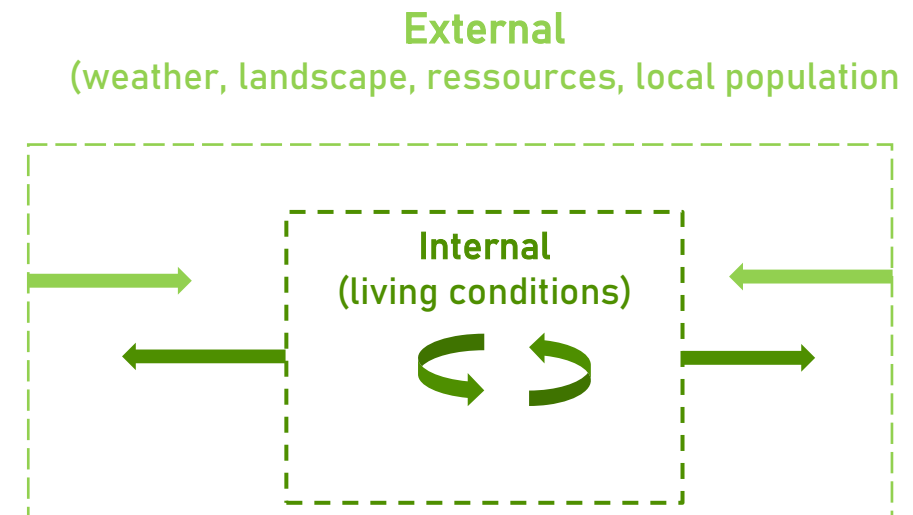
→ Respect of humanitarian principle « do no harm »?

## « Environments »

I consider the camps « **environnements** » at different scales :

- Internal (living conditions)
- External (location, weather conditions, local population)

→ « Where we live, work, play and eat » (Robert Gottlieb)



# 1) What do we speak about ?- Some Geographical notions

## « Ecotones »

« Spaces of tensions, encounters, exchanges, adaptation, competition or relegation »  
(Lacroix and Misrahi-Barak)

Within social sciences, 3 aspects :

- 1) Cultural creativity
- 2) Presence of exercised power and controls
- 3) Connection of people, economies, materials and cultures

→ Camps are « migratory ecotones »

# 1) What do we speak about ?- Some Geographical notions

## « Environmental justice »

*"Inequalities linked to heritage and the marking of urban territories, inequalities in access to urbanity and the living environment, inequalities in exposure to nuisances and risks, and inequalities in the ability to act on the environment and to challenge public authorities" (Faburel, 2010)*

- Distribution of resources and nuisances
- Access to resources
- People's capacity to get involved

### 2 means of action:

- 1) **Distributive social justice**, the *"equitable and fair spatial distribution of socially valued resources and the opportunities to exploit them"*. (Soja, 2009)
- 2) **Inclusive spatial justice**, *« to correct injustices that are socially rooted in differences of gender, race, culture, etc. in order to establish a framework for the full and effective participation of oppressed groups. »* (Young, 1990, by Paddeu, 2016)

## 2) How to map the camps? - Which criterias?

### Previous studies

Based on the location, people's numbers, type of available natural resource

### Environmental racism

Discrimination against people :

- Isolated from public services and resources
- Exposed to environmental burden
- Potentially displaced at any moment

Example : host areas for nomad people in France (Acker) and in Europe (Heidegger and Wiese)

### Isolation

« *Feeling due to the weakness of relationship with others, with the outside* »

→ Physical discontinuity + difficult accessibility

→ **« Spatial offenses »** (Lussault, 2009)

**Isolation + lack of intimacy**

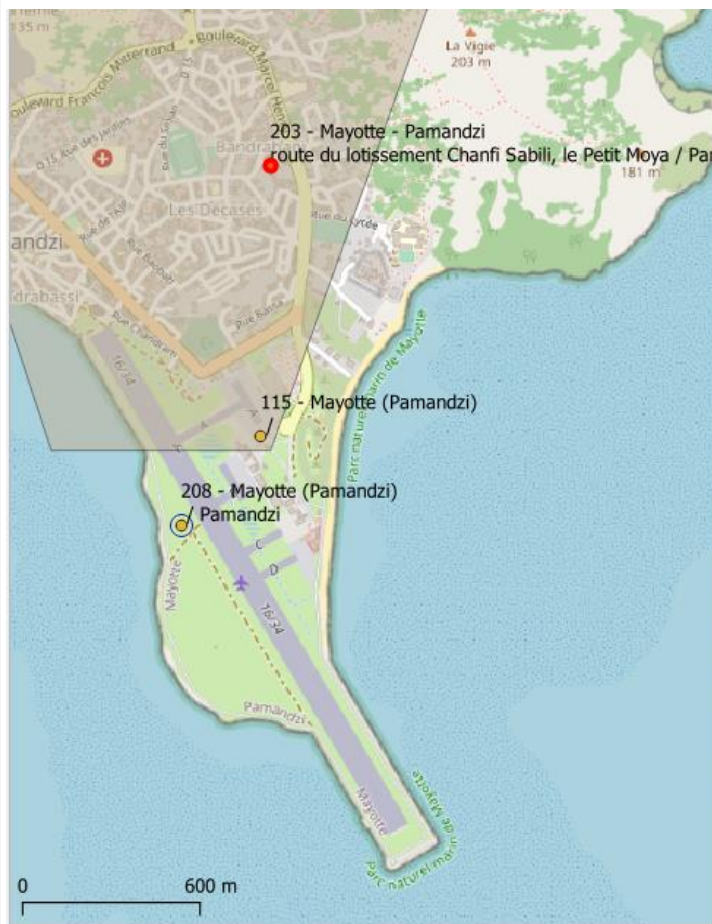


## 2) How to map the camps? - Which database?

- Migreurop
- Global Detention Project
- Observatoire des Camps de Réfugié.e.s
- International Organisation for Migration (IOM)
- UNHCR

## 2) How to map the camps? - Difficulties

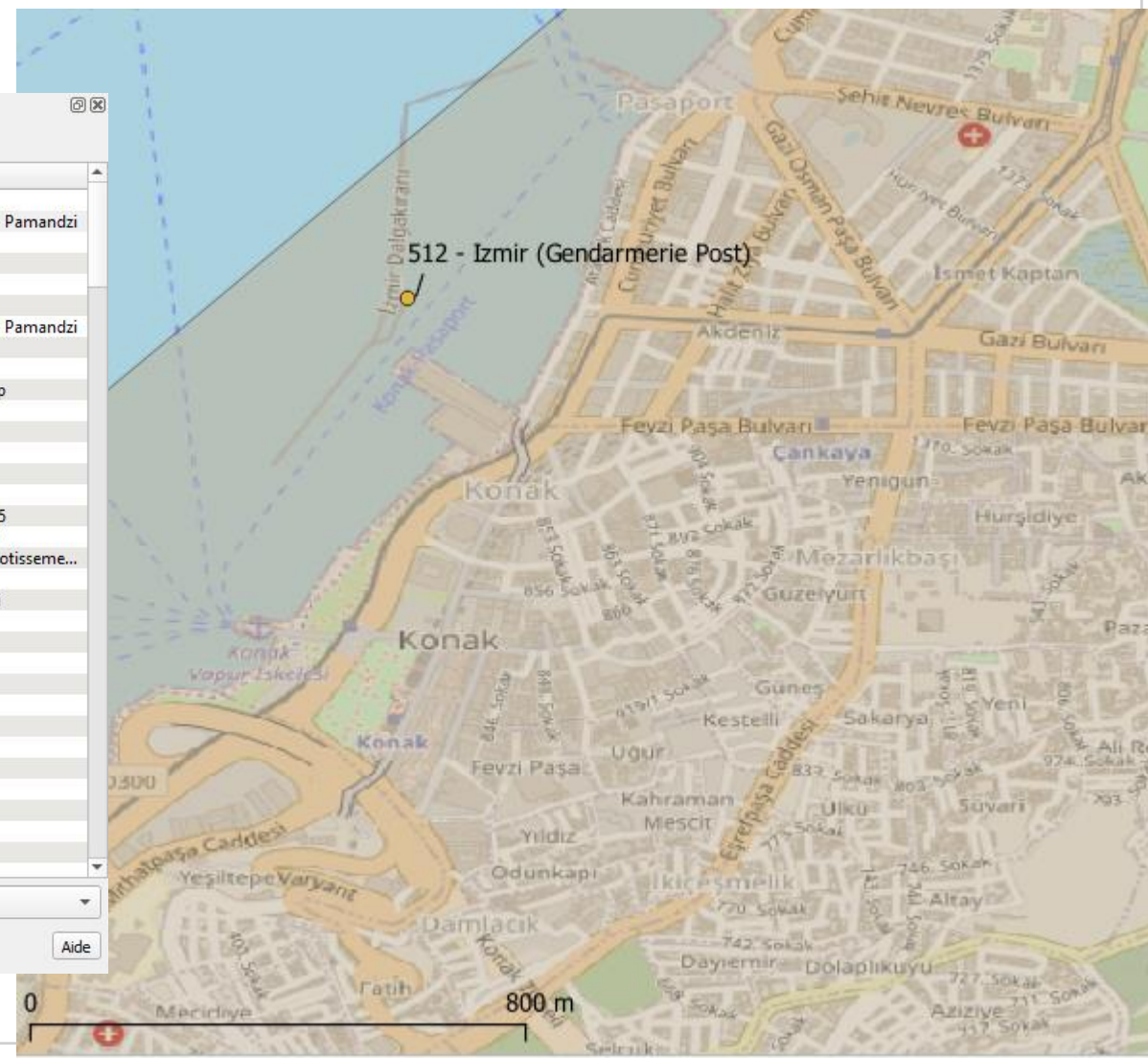
Duplicates, wrong locations...



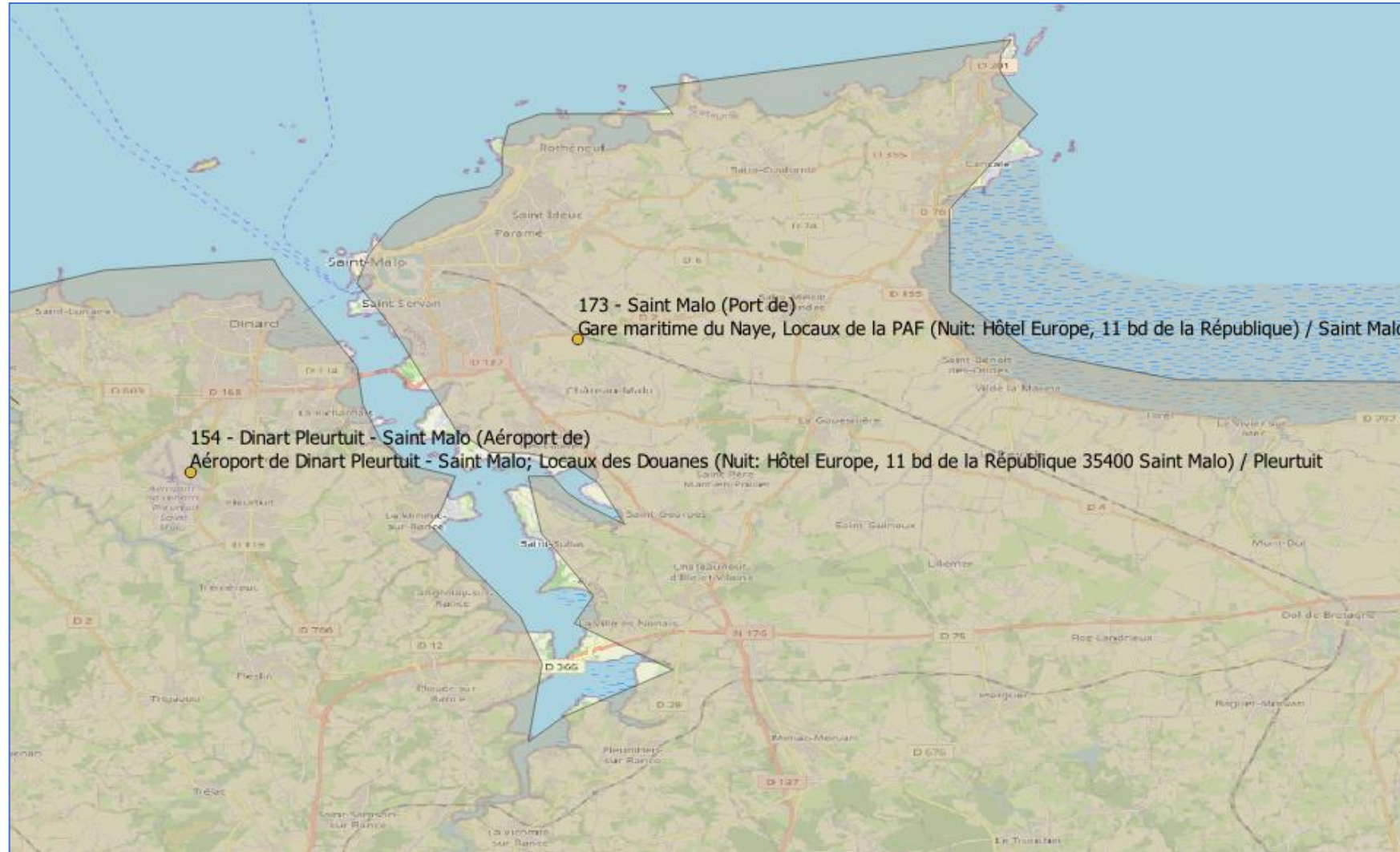
Résultats de l'identification

Entité	Valeur
▼ L Fernier_Carto_BDD_17mars22	
▼ nom	Mayotte - Pamandzi
▶ (Dérivé)	
▶ (Actions)	
unique_id	203
id	203
nom	Mayotte - Pamandzi
doublon	NULL
remarques	NULL
BDD_source	Migreurop
sources	NULL
iso3	FRA
pays	France
pays_population	NULL
Localisation_qualite	NULL
camp_latitude	-12,796015
camp_longitude	45,282549
camp_adresse	route du lotisseme...
camp_code_postal	97610
camp_commune	Pamandzi
ville_proche_NOM	NULL
ville_proche_code postal	NULL
ville_proche_population	NULL
camp_actif	NULL
prison	NULL
type_camp	ferme
infrastructure	NULL
climat	NULL
zone	NULL
occupation_du_sol	NULL
capacite_2017	NULL
capacite_2018	NULL
capacite_2019	NULL

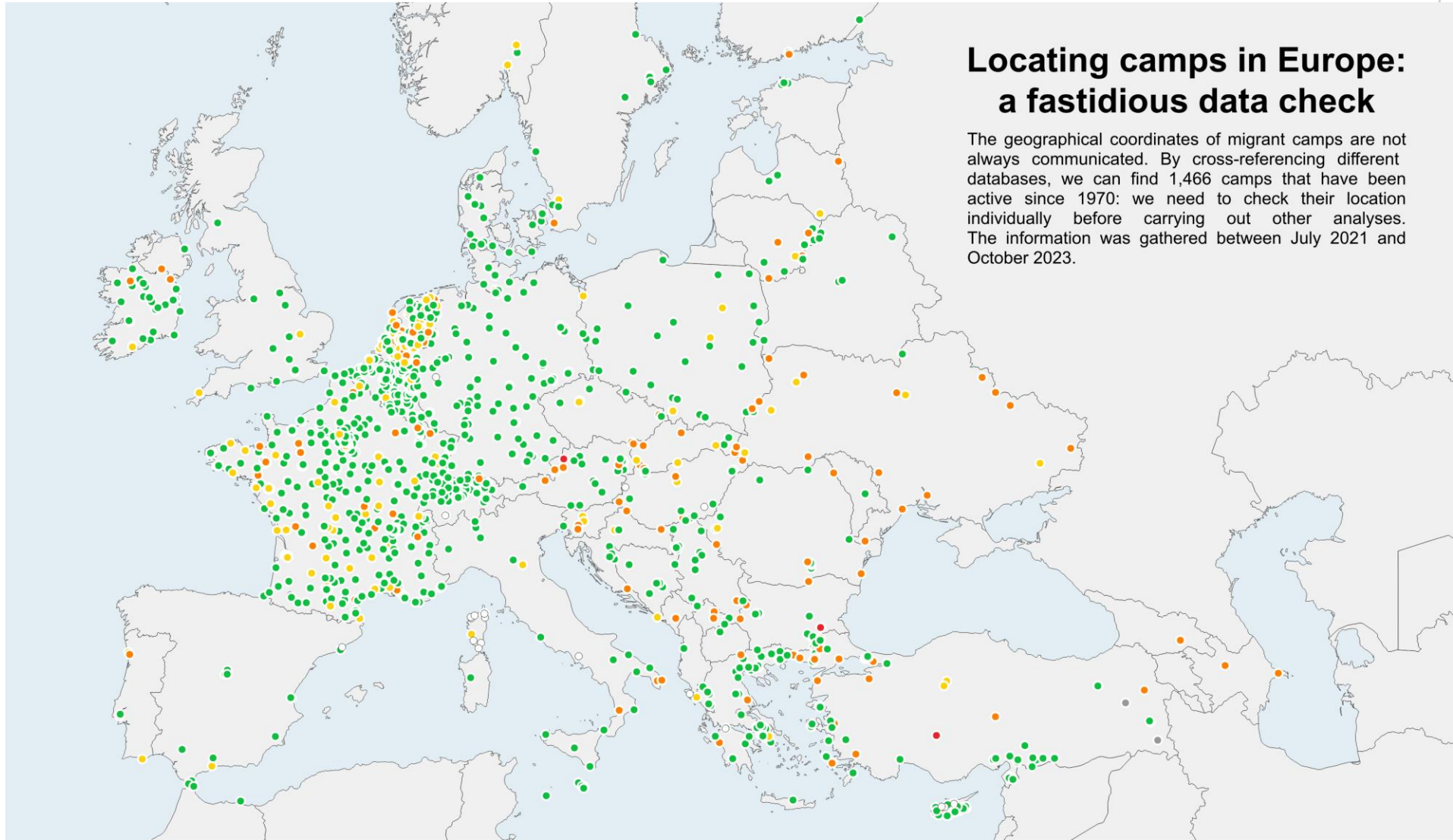
Mode: Couche actuelle  
Vue: Arborescence



## 2) How to map the camps? - What camps?



# Mapping the camps : localisations...



## Locating camps in Europe: a fastidious data check

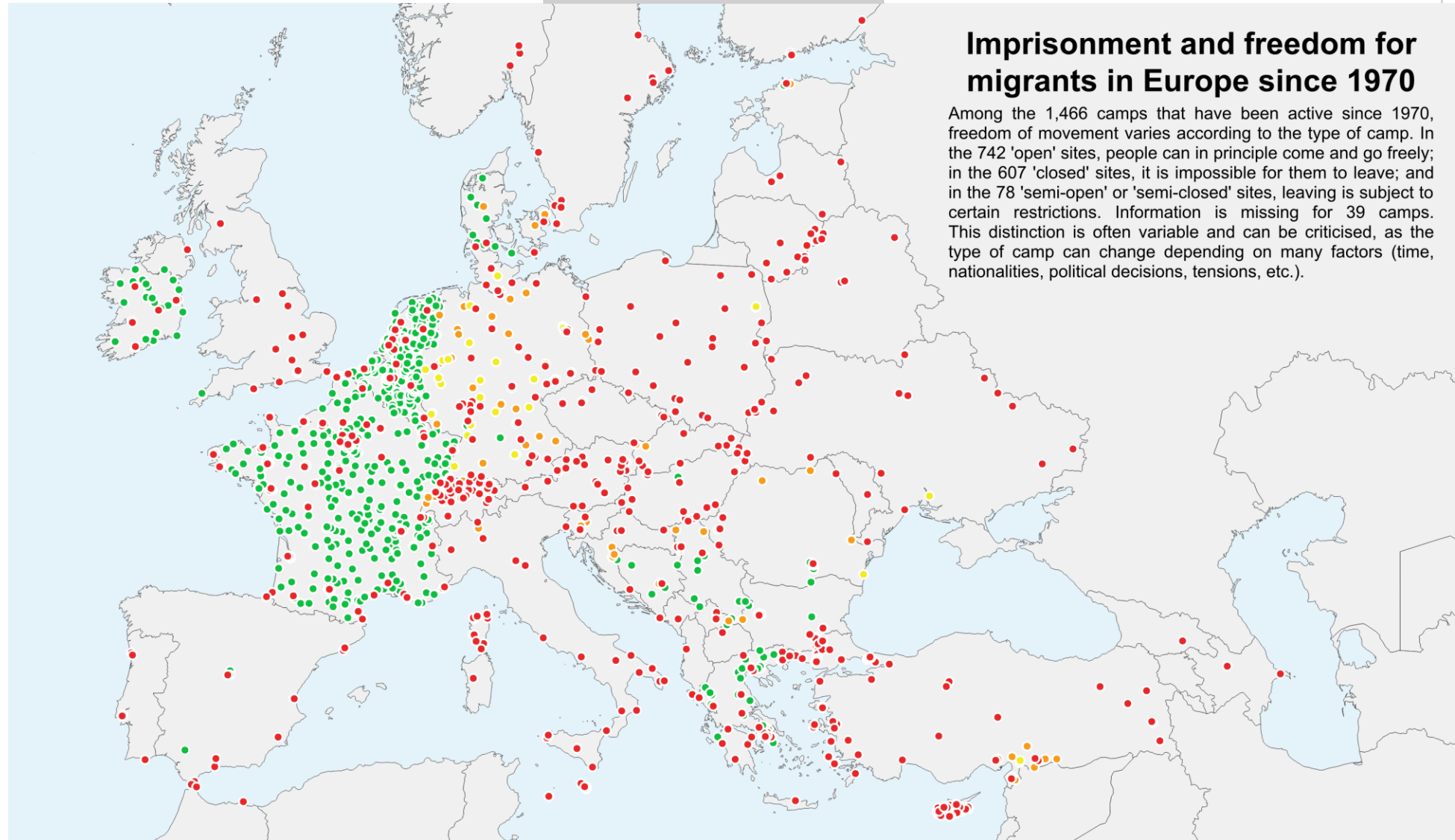
The geographical coordinates of migrant camps are not always communicated. By cross-referencing different databases, we can find 1,466 camps that have been active since 1970: we need to check their location individually before carrying out other analyses. The information was gathered between July 2021 and October 2023.

### 6 scenarios for the quality of the location of the camps inventoried

- Verified: identifiable camp and precise address known
  - Neighbourhood: camp not precisely identifiable, but address/street known
  - Commune: precise address unknown, but commune identified
- Region: precise municipality unknown, but connecting region identified
  - Imprecise: camp mentioned in a database and on the internet, but address unknown
  - Doubtful: camp mentioned in a database but no further information available

# Mapping the camps : types...

- How to decide?
- The reality is complex
- This map is lying (and oversea territories are not represented but taken into account in the figures)
- Datas is inequally produced by governments / or I did not find it
- Importance of activists and NGOs
- A « geographical fight » (Dujmović, 2023)



## Imprisonment and freedom for migrants in Europe since 1970

Among the 1,466 camps that have been active since 1970, freedom of movement varies according to the type of camp. In the 742 'open' sites, people can in principle come and go freely; in the 607 'closed' sites, it is impossible for them to leave; and in the 78 'semi-open' or 'semi-closed' sites, leaving is subject to certain restrictions. Information is missing for 39 camps. This distinction is often variable and can be criticised, as the type of camp can change depending on many factors (time, nationalities, political decisions, tensions, etc.).

Places of encampment with varying circulation regulations

- "Open" camps: freedom to come and go
- "Semi-open" or "Semi-closed" camps: circulation is subject to conditions/restrictions
- "Closed" camps: impossible to leave
- Doubts about the type of camp

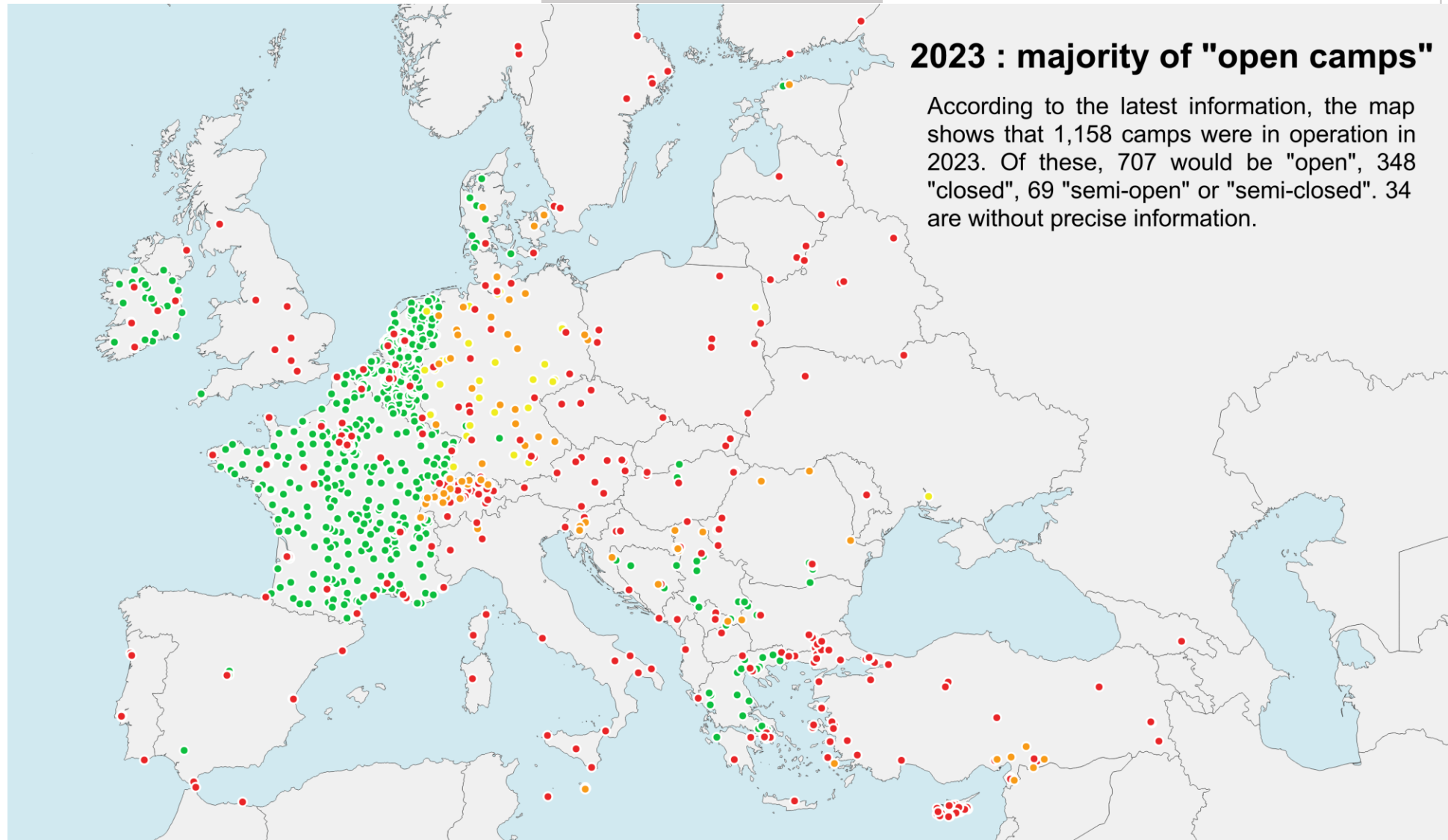
# Mapping the camps : Activity in 2023...

« Open » : 707

« Closed » : 338

« semi-open /  
semi closed » : 69

Missing info : 34



## 2023 : majority of "open camps"

According to the latest information, the map shows that 1,158 camps were in operation in 2023. Of these, 707 would be "open", 348 "closed", 69 "semi-open" or "semi-closed". 34 are without precise information.

### Places of encampment with varying circulation regulations

- "Open" camps: freedom to come and go
- "Semi-open" or "semi-closed" camps: circulation is subject to conditions/restrictions
- "Closed" camps: impossible to leave
- Doubts about the type of camp

### 3) How to consider their environments? – Corine Land Cover

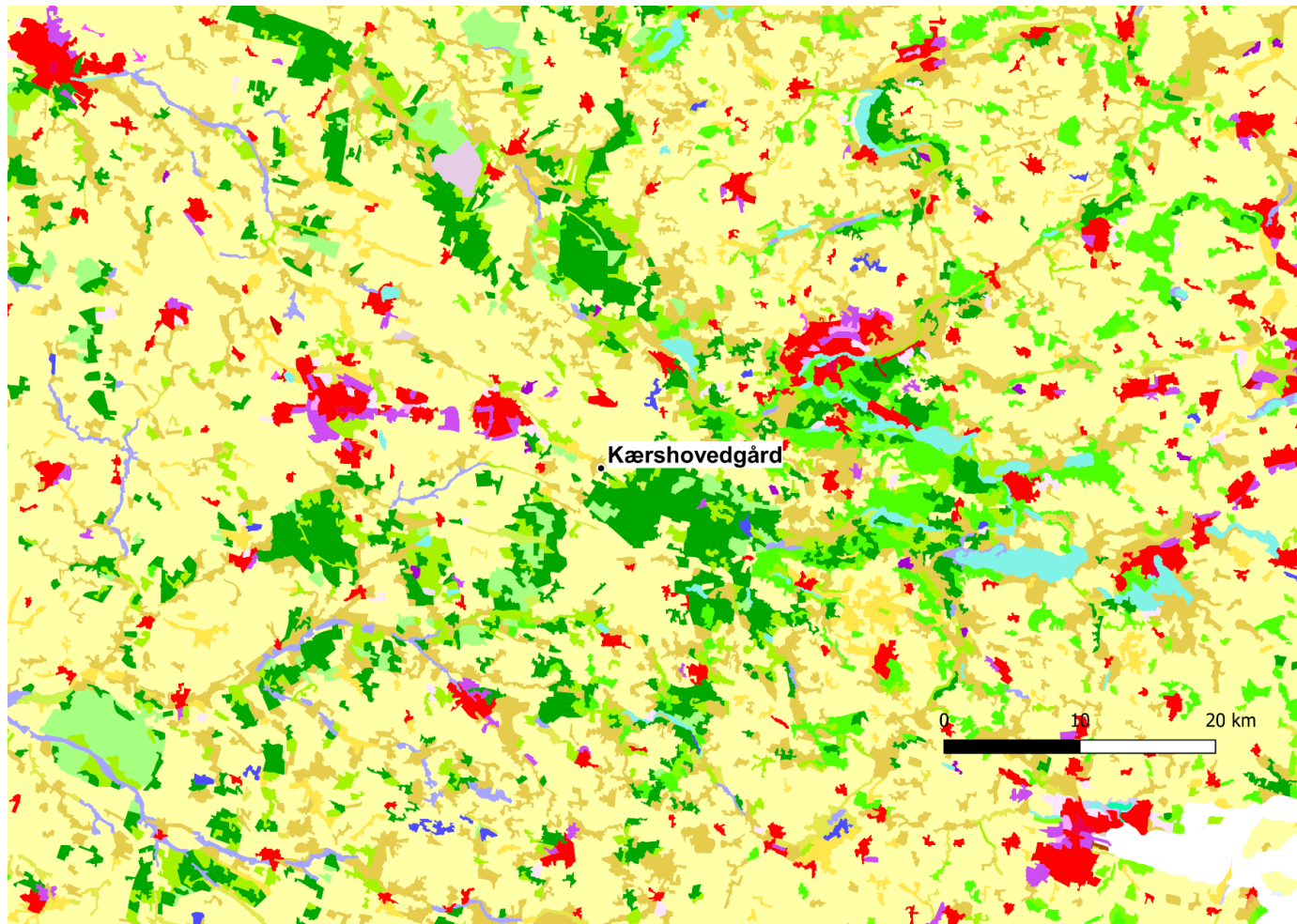


- |  |   |
|--|---|
| 111 - Continuous urban fabric                    | 211 - Non-irrigated arable land   |
| 112 - Discontinuous urban fabric                 | 212 - Permanently irrigated land  |
| 121 - Industrial or commercial units             | 213 - Rice fields   |
| 122 - Road and rail networks and associated land | 221 - Vineyards   |
| 123 - Port areas                                 | 222 - Fruit trees and berry plantations   |
| 124 - Airports                                   | 223 - Olive groves  |
| 131 - Mineral extraction sites                   | 231 - Pastures  |
| 132 - Dump sites                                 | 241 - Annual crops associated with permanent crops  |
| 133 - Construction sites                         | 242 - Complex cultivation patterns  |
| 141 - Green urban areas                          | 243 - Land principally occupied by agriculture with significant areas of natural vegetation |
| 142 - Sport and leisure facilities               | 244 - Agro-forestry areas   |
| 311 - Broad-leaved forest                        | 334 - Burnt areas   |
| 312 - Coniferous forest                          | 335 - Glaciers and perpetual snow   |
| 313 - Mixed forest                               | 411 - Inland marshes  |
| 321 - Natural grasslands                         | 412 - Peat bogs   |
| 322 - Moors and heathland                        | 421 - Salt marshes  |
| 323 - Sclerophyllous vegetation                  | 422 - Salines   |
| 324 - Transitional woodland-shrub                | 423 - Intertidal flats  |
| 331 - Beaches-dunes-sands                        | 511 - Water courses   |
| 332 - Bare rocks                                 | 512 - Water bodies  |
| 333 - Sparsely vegetated areas                   | 521 - Coastal lagoons   |
|  | 522 - Estuaries   |
|  | 523 - Sea and ocean   |
|  | 999 - NODATA  |

Fonds de carte : Natural Earth, 2018. Projection : Natural Earth II. Source des données : recherche personnelle Louis Fernier, 2022; Corine Land Cover, 2018.

### 3) How to consider their environments? – Corine Land Cover

An example near by Aarhus : Kærshovedgård (CLC 243)



- |  |   |
|--|---|
| 111 - Continuous urban fabric                    | 211 - Non-irrigated arable land   |
| 112 - Discontinuous urban fabric                 | 212 - Permanently irrigated land  |
| 121 - Industrial or commercial units             | 213 - Rice fields   |
| 122 - Road and rail networks and associated land | 221 - Vineyards   |
| 123 - Port areas                                 | 222 - Fruit trees and berry plantations   |
| 124 - Airports                                   | 223 - Olive groves  |
| 131 - Mineral extraction sites                   | 231 - Pastures  |
| 132 - Dump sites                                 | 241 - Annual crops associated with permanent crops  |
| 133 - Construction sites                         | 242 - Complex cultivation patterns  |
| 141 - Green urban areas                          | 243 - Land principally occupied by agriculture with significant areas of natural vegetation |
| 142 - Sport and leisure facilities               | 244 - Agro-forestry areas   |
| 311 - Broad-leaved forest                        | 334 - Burnt areas   |
| 312 - Coniferous forest                          | 335 - Glaciers and perpetual snow   |
| 313 - Mixed forest                               | 411 - Inland marshes  |
| 321 - Natural grasslands                         | 412 - Peat bogs   |
| 322 - Moors and heathland                        | 421 - Salt marshes  |
| 323 - Sclerophyllous vegetation                  | 422 - Salines   |
| 324 - Transitional woodland-shrub                | 423 - Intertidal flats  |
| 331 - Beaches-dunes-sands                        | 511 - Water courses   |
| 332 - Bare rocks                                 | 512 - Water bodies  |
| 333 - Sparsely vegetated areas                   | 521 - Coastal lagoons   |
|  | 522 - Estuaries   |
|  | 523 - Sea and ocean   |
|  | 999 - NODATA  |

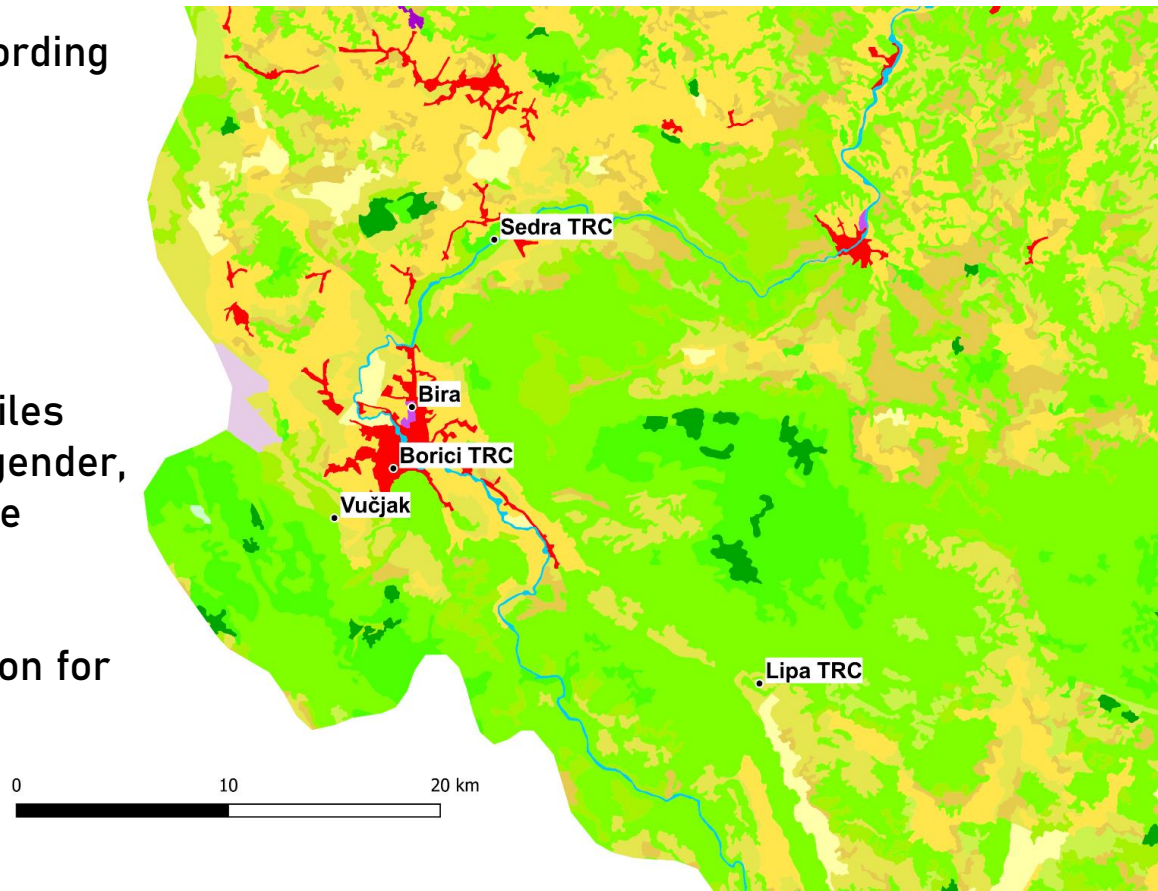


### 3) How to consider their environments? – Corine Land Cover

#### Some examples in western Bosnia and Herzegovina

- Analysis according to the type of ground
- Hypothesis : encampment according to people's profiles (nationality, gender, administrative situation...)

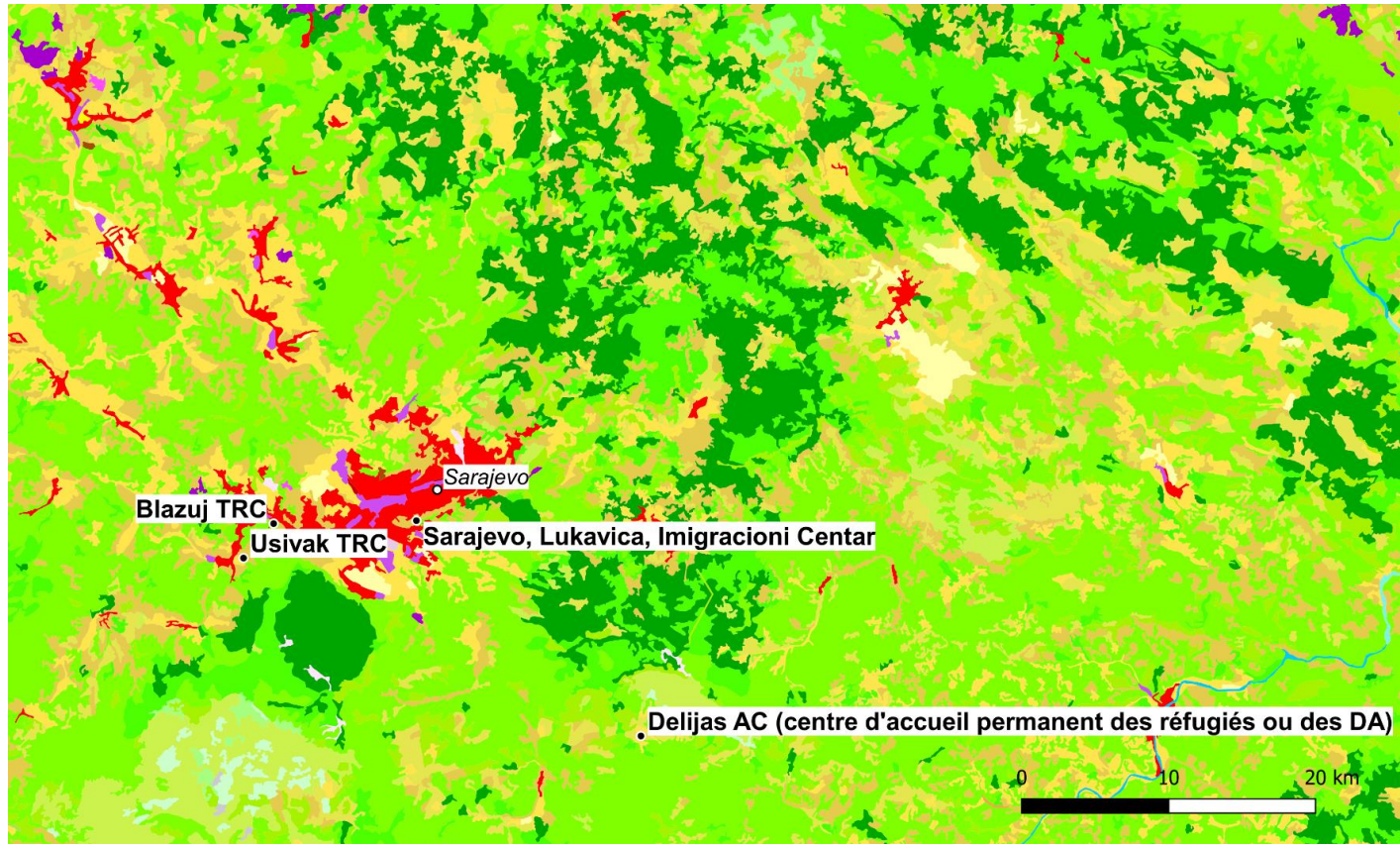
→ Higher isolation for « single men »



111 - Continuous urban fabric	211 - Non-irrigated arable land
112 - Discontinuous urban fabric	212 - Permanently irrigated land
121 - Industrial or commercial units	213 - Rice fields
122 - Road and rail networks and associated land	221 - Vineyards
123 - Port areas	222 - Fruit trees and berry plantations
124 - Airports	223 - Olive groves
131 - Mineral extraction sites	231 - Pastures
132 - Dump sites	241 - Annual crops associated with permanent crops
133 - Construction sites	242 - Complex cultivation patterns
141 - Green urban areas	243 - Land principally occupied by agriculture with significant areas of natural vegetation
142 - Sport and leisure facilities	244 - Agro-forestry areas
311 - Broad-leaved forest	334 - Burnt areas
312 - Coniferous forest	335 - Glaciers and perpetual snow
313 - Mixed forest	411 - Inland marshes
321 - Natural grasslands	412 - Peat bogs
322 - Moors and heathland	421 - Salt marshes
323 - Sclerophyllous vegetation	422 - Salines
324 - Transitional woodland-shrub	423 - Intertidal flats
331 - Beaches-dunes-sands	511 - Water courses
332 - Bare rocks	512 - Water bodies
333 - Sparsely vegetated areas	521 - Coastal lagoons
	522 - Estuaries
	523 - Sea and ocean
	999 - NODATA

### 3) How to consider their environments? – Corine Land Cover

Some examples nearby Sarajevo, Bosnia and Herzegovina



- |  |   |
|--|---|
| 111 - Continuous urban fabric                    | 211 - Non-irrigated arable land   |
| 112 - Discontinuous urban fabric                 | 212 - Permanently irrigated land  |
| 121 - Industrial or commercial units             | 213 - Rice fields   |
| 122 - Road and rail networks and associated land | 221 - Vineyards   |
| 123 - Port areas                                 | 222 - Fruit trees and berry plantations   |
| 124 - Airports                                   | 223 - Olive groves  |
| 131 - Mineral extraction sites                   | 231 - Pastures  |
| 132 - Dump sites                                 | 241 - Annual crops associated with permanent crops  |
| 133 - Construction sites                         | 242 - Complex cultivation patterns  |
| 141 - Green urban areas                          | 243 - Land principally occupied by agriculture with significant areas of natural vegetation |
| 142 - Sport and leisure facilities               | 244 - Agro-forestry areas   |
| 311 - Broad-leaved forest                        | 334 - Burnt areas   |
| 312 - Coniferous forest                          | 335 - Glaciers and perpetual snow   |
| 313 - Mixed forest                               | 411 - Inland marshes  |
| 321 - Natural grasslands                         | 412 - Peat bogs   |
| 322 - Moors and heathland                        | 421 - Salt marshes  |
| 323 - Sclerophyllous vegetation                  | 422 - Salines   |
| 324 - Transitional woodland-shrub                | 423 - Intertidal flats  |
| 331 - Beaches-dunes-sands                        | 511 - Water courses   |
| 332 - Bare rocks                                 | 512 - Water bodies  |
| 333 - Sparsely vegetated areas                   | 521 - Coastal lagoons   |
|  | 522 - Estuaries   |
|  | 523 - Sea and ocean   |
|  | 999 - NODATA  |

### 3) How to map their environments? – Implementing an indicator

- Estimating the isolation from public services > criteria 1/3 of environmental racism
  - Using Open Street Map datas > non exhaustive and inequally up to date according the countries
  - Using Corine Land Cover
- Analysing the camps with a common indicator
- Illustrating the inequalities of access to public services

Test indicateur d'isolement			
	<i>critère</i>	<i>Constat</i>	<i>Note</i>
Corine Land Cover	Type of ground	111	5
		112	4
		122	3
		210	2
		310	1
		410	0
Cityhall	Distance (km)	0,00	5
		1,00	4
		5,00	3
		10,00	2
		15,00	1
		20,00	0

### 3) How to map their environments? – Implementing an indicator

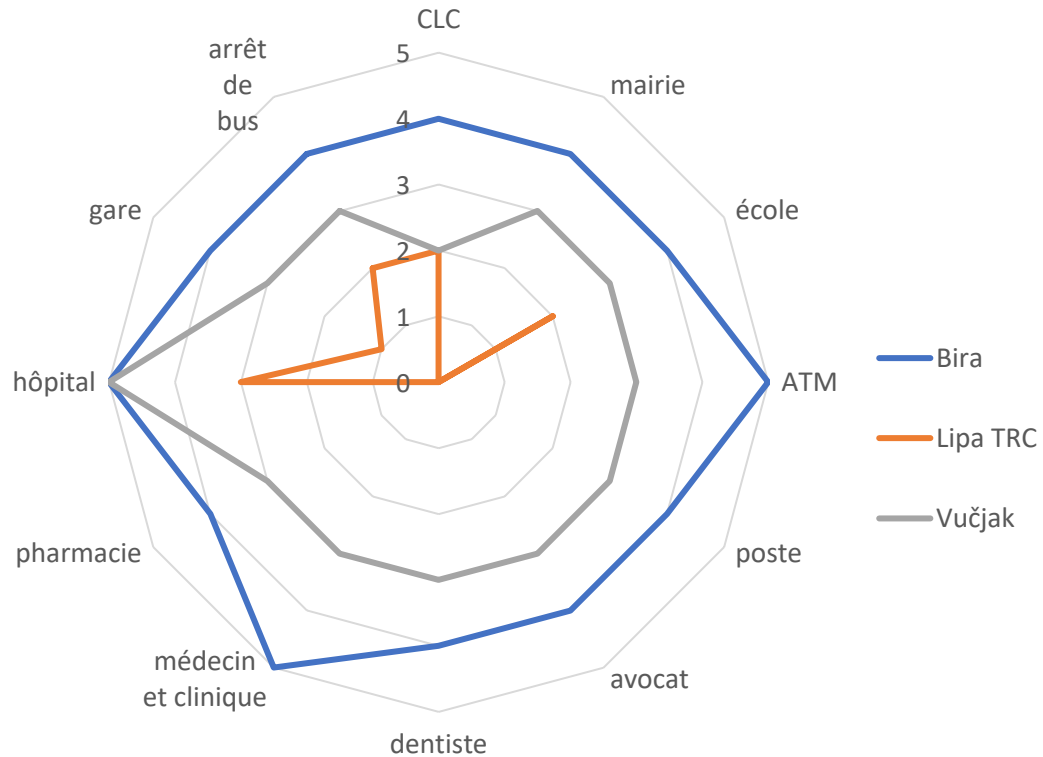
Notes attribuées en fonction de l'indicateur																
pays	nom	CLC	mairie	école	ATM	poste	avocat	dentiste	médecin et clinique	pharmacie	hôpital	gare	arrêt de bus	Note sur 60	Note sur 20	Indicateur pays
<b>Bosnie-Herzégovine</b>	Bira	4	4	4	5	4	4	4	5	4	5	4	4	51	17	<b>Bosnie-Herzégovine</b>
12 camps	Blažuj TRC	4	3	5	4	4	2	4	3	4	5	4	5	47	15.7	<b>Maximum possible</b> 240
	Borici TRC	4	4	4	4	4	4	4	4	4	5	4	4	49	16.3	<b>Total des points</b> 148
	Delijas AC	2	2	2	0	2	0	0	2	1	4	3	3	21	7	<b>Médiane</b> 14
	Ključ	2	3	4	0	3	0	0	3	3	5	3	3	29	9.67	<b>Moyenne</b> 12
	Lipa TRC	2	0	2	0	0	0	0	0	0	3	1	2	10	3.33	
	Miral TRC	4	4	5	4	4	0	4	2	4	5	4	4	44	14.7	
	Salakovac AC	4	1	3	2	1	1	1	3	2	5	4	3	30	10	
	Sarajevo. Lukavica. Imigracioni Centar	2	4	4	4	4	4	4	4	4	5	4	4	47	15.7	
	Sedra TRC	1	2	4	2	3	1	4	2	2	4	5	5	35	11.7	
	Ušivak TRC	2	4	4	4	4	1	4	4	4	5	4	4	44	14.7	
	Vučjak	2	3	3	3	3	3	3	3	3	5	3	3	37	12.3	

- Importance of criterias varies according to field observations
- In Lipa : interdiction of public transportation and hitchhiking... → Absolute need to understand the contexts

### 3) How to map their environments? – Implementing an indicator

In Bosnia and Herzegovina : the camps for « single men »...

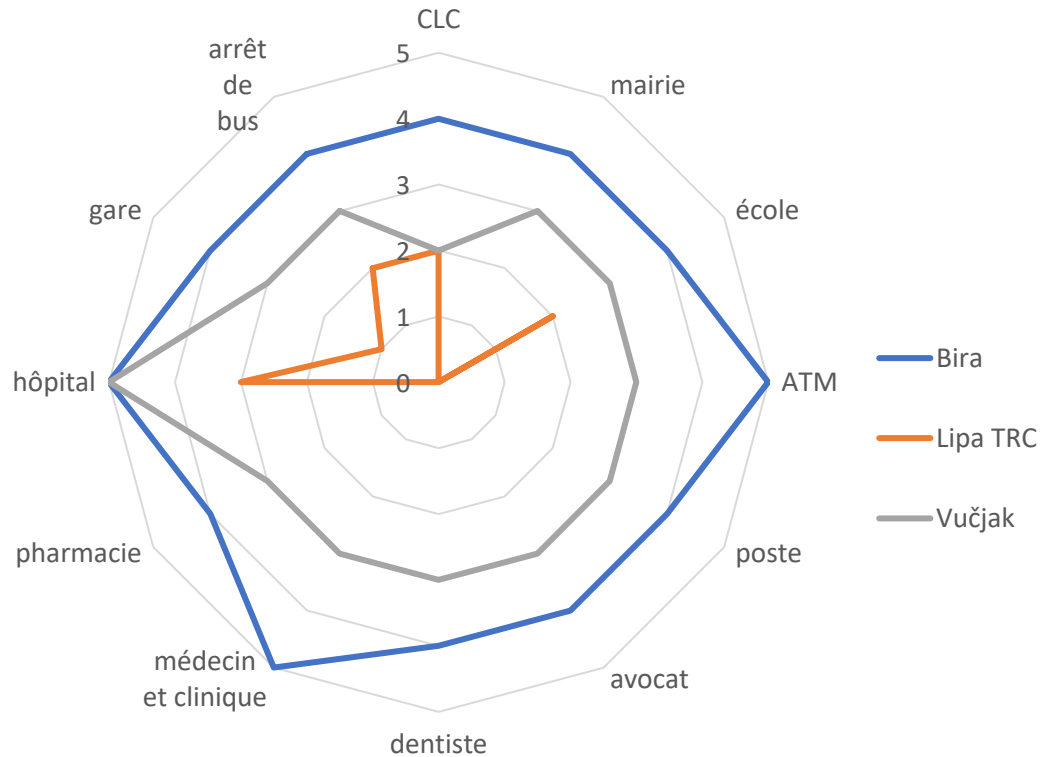
From Bira to Lipa by Vučjak : progressive isolation of the single men  
[Border with Croatia]



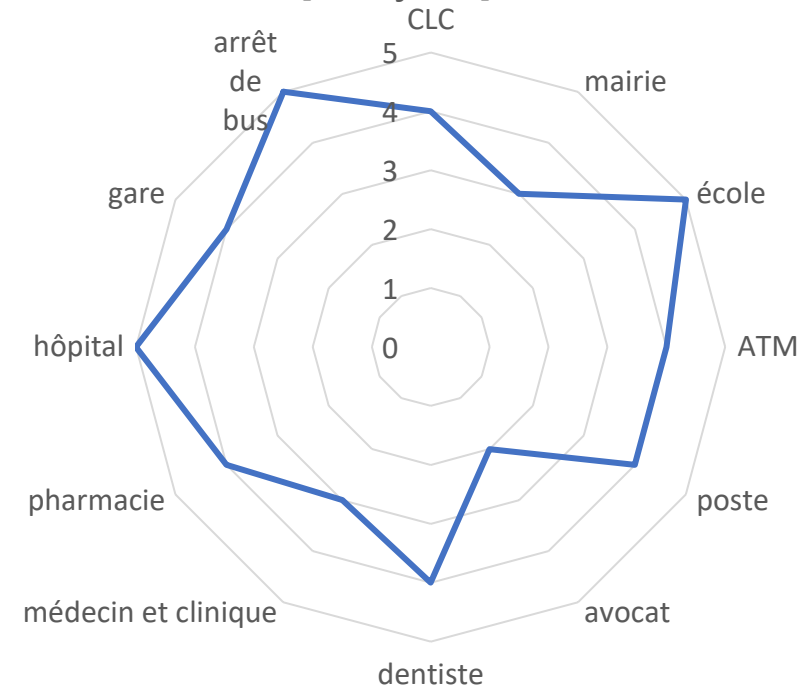
### 3) How to map their environments? – Implementing an indicator

In Bosnia and Herzegovina : the camps for « single men »...

From Bira to Lipa by Vučjak : progressive isolation of the single men  
[Border with Croatia]



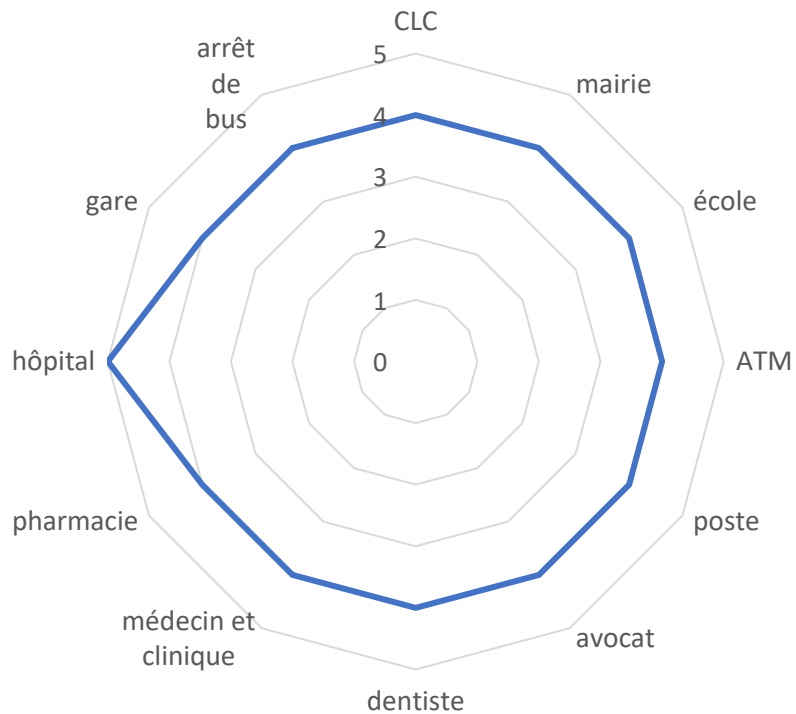
Blažuj TRC  
[Sarajevo]



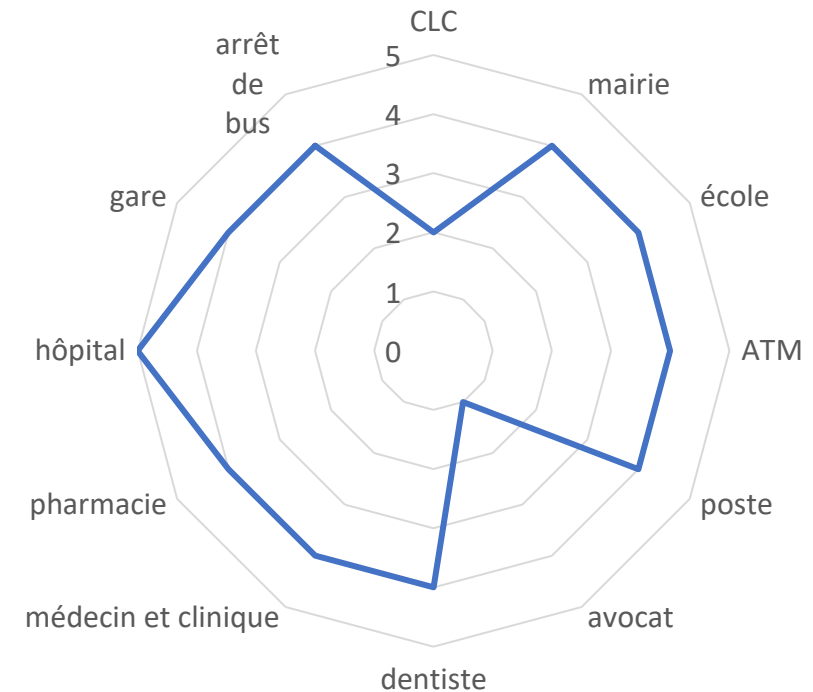
### 3) How to map their environments? – Implementing an indicator

In Bosnia and Herzegovina : two camps for women, families and minors...

Borici TRC  
[Border with Croatia]

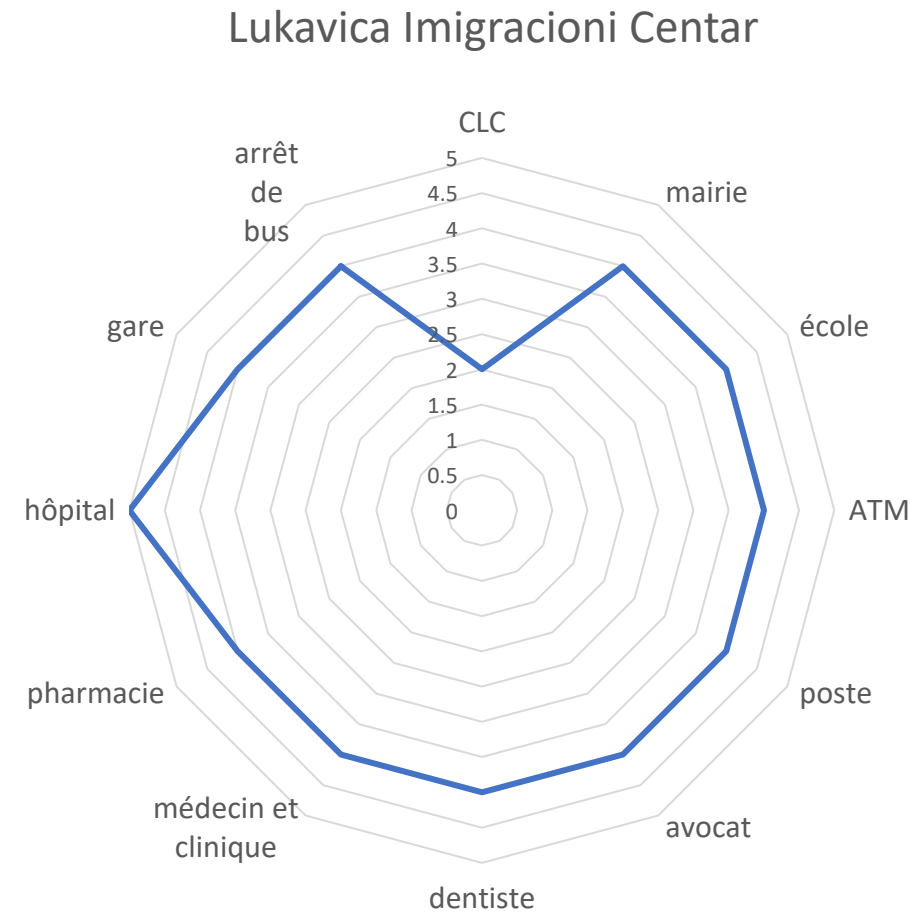
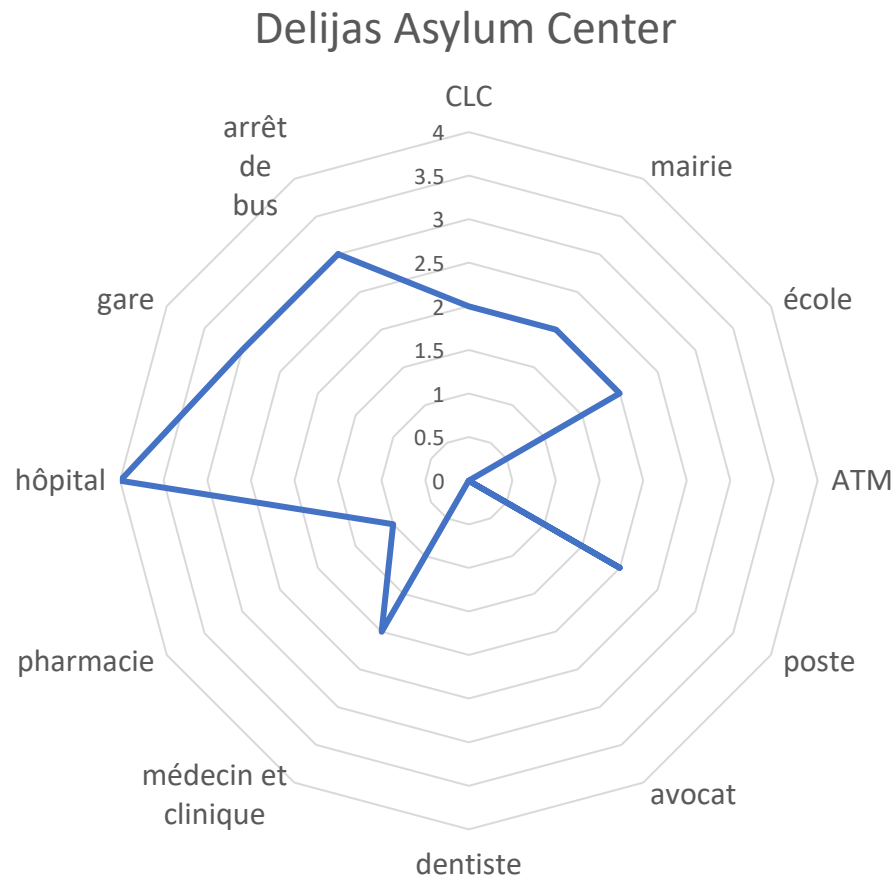


Ušivak TRC  
[Sarajevo]



### 3) How to map their environments? – Implementing an indicator

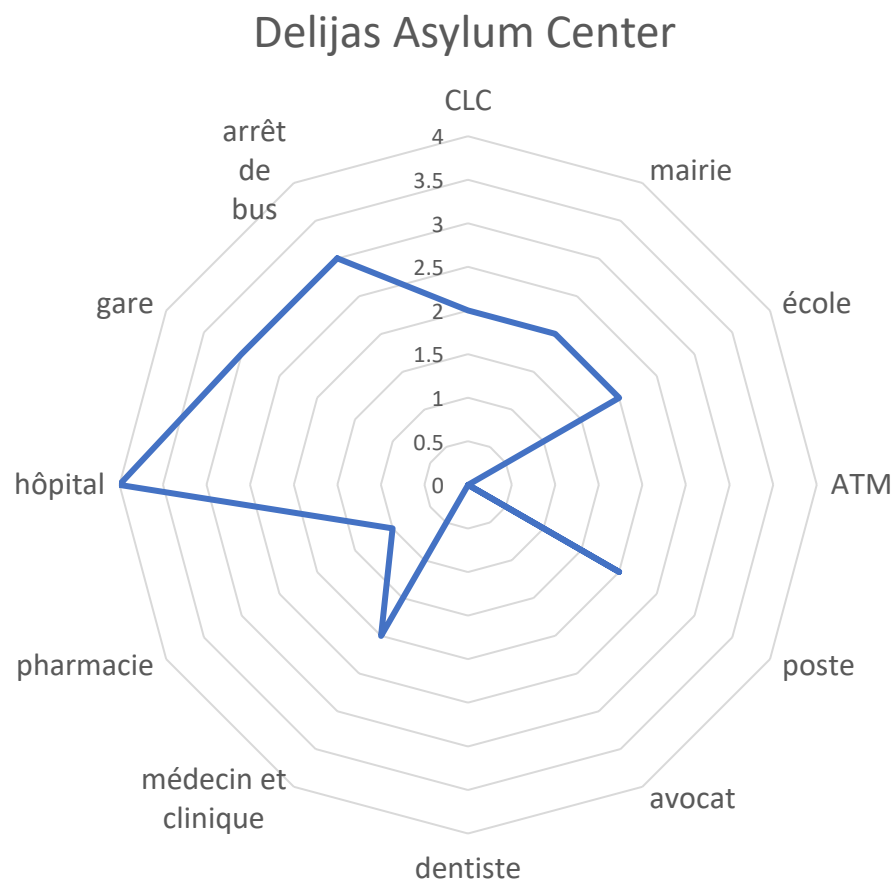
In Bosnia and Herzegovina : one camp for asylum seekers and refugees, another one for detention...





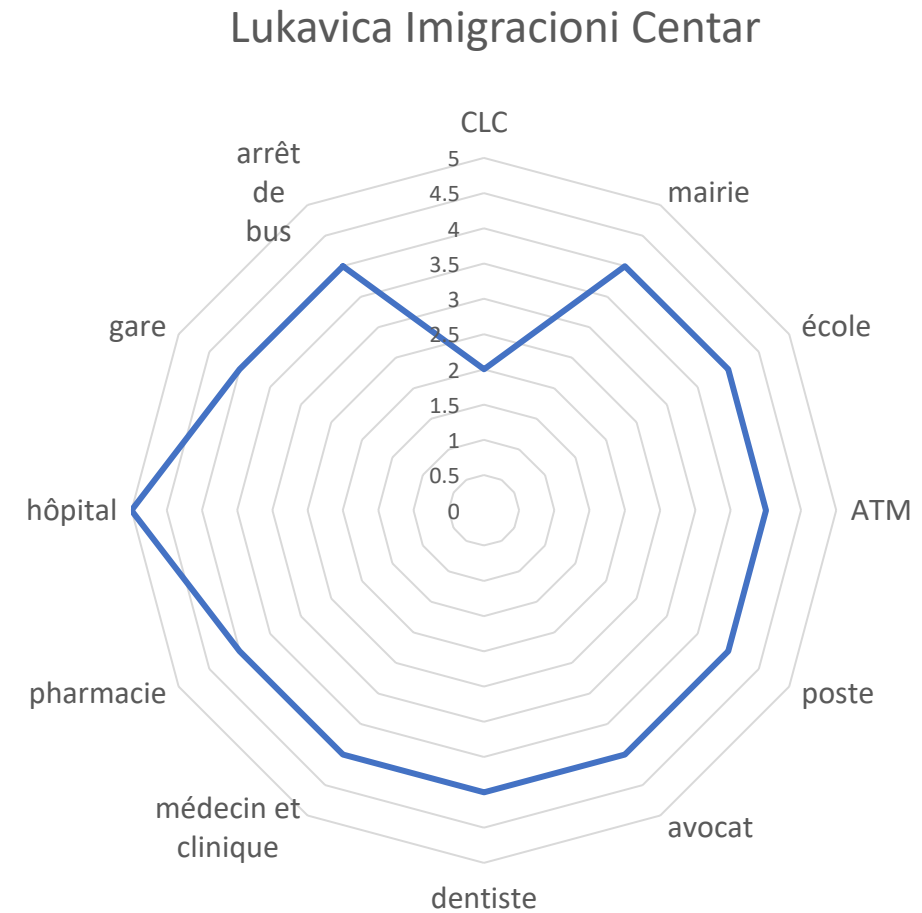
### 3) How to map their environments? – Implementing an indicator

Some examples of illustration nearby Sarajevo, in Bosnia and Herzegovina...



### 3) How to map their environments? – Implementing an indicator

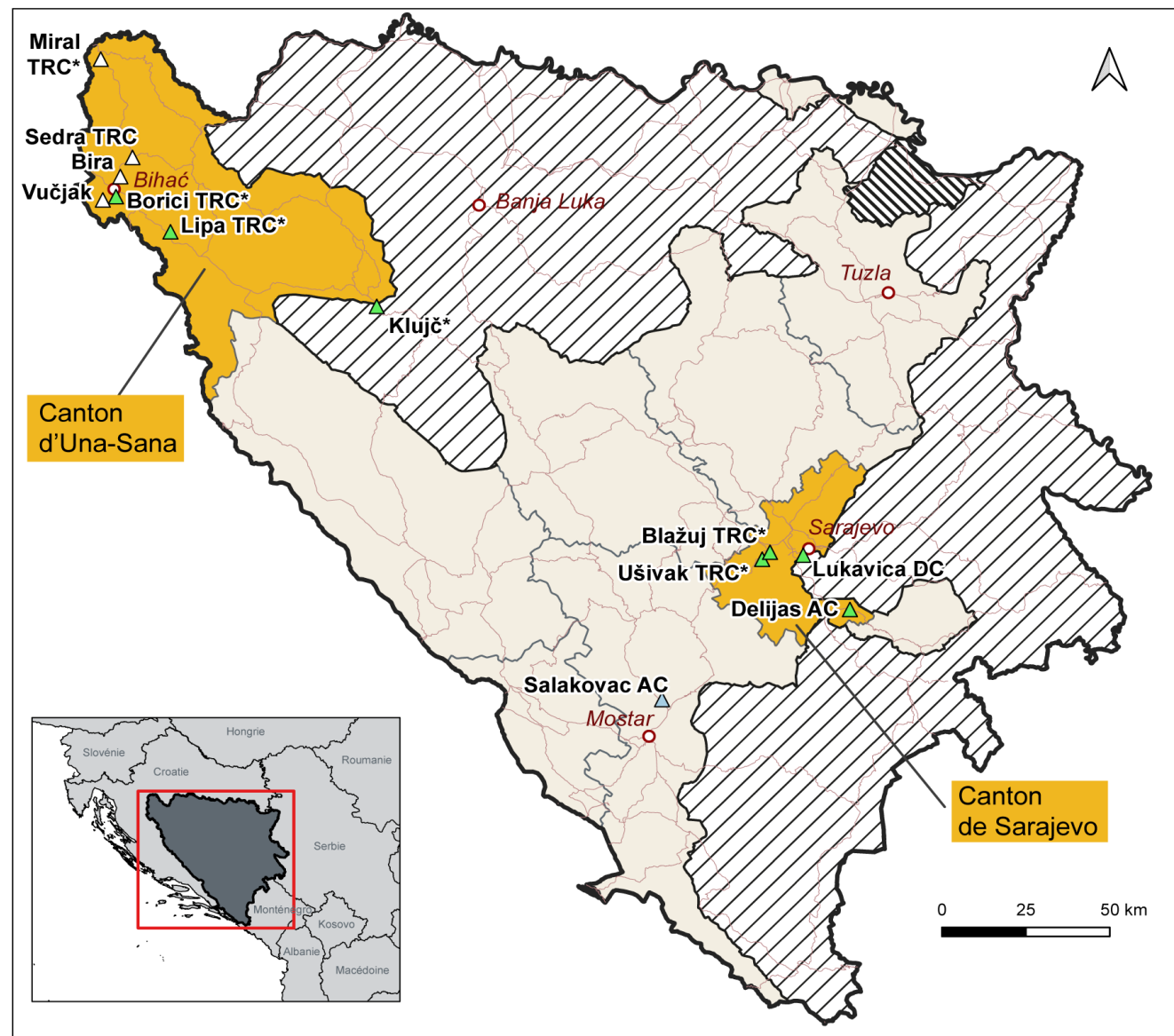
Some examples of illustration nearby Sarajevo, in Bosnia and Herzegovina...



## 4) On the field... - Bosnian context

- A « famous » route not so active : 145 334 people passing by between 2017 et 2023 (IOM)
- Implantation of camps under EU rules, in two cantons only
- Multiplication of informal camps and squats according to the tactics chosen by the migrant people

## Repartition of camps in Bosnia and Herzegovina



### Petit aperçu des camps bosniens et de leur statut

#### Activité des camps

- ▲ Camp actif
- △ Camp inactif
- ▲ Doute sur l'activité

□ Frontière de la Bosnie-Herzégovine

▨ District de Brčko

▨ Fédération de Bosnie-Herzégovine

▨ République Serbe de Bosnie

**Cantons de la Fédération de Bosnie-Herzégovine**

■ Cantons d'Una Sana et de Sarajevo

■ Autres cantons

○ Ville principale

— Route principale

#### Notes :

AC : Asylum Centre (Centre pour demandeur d'asile)

DC : Detention Centre (Centre de détention)

TRC : Temporary Reception Centre (Centre d'accueil temporaire)

\* : Les camps dont les noms sont suivis d'un \* ont été visités en 2022.

Données : Observations de terrain 2022, Organisation Internationale pour les Migrations, Haut-Commissariat aux Réfugiés | Fond de carte : © Contributeurs d'Open Street Map, 2022, ESRI Maps & data, 2017 | Conception et réalisation : Louis Fernier et Nelly Martin, Migrinter UMR 7301, CNRS, Université de Poitiers, novembre 2022.

## 4) On the field... - Bosnian context

- Monitoring of illegal pushbacks by Border Violence Monitoring Network since 2017
- Physical violences that also happen inside camps

« So his feet were frozen... so when he came to Bihac, to camp, nobody took care of it. So because they neglected this thing, that was worse and worse and worse, until he was laying down on the floor, on the middle of the camp, screaming of pain. And then he died in the hospital... » (M., Juillet 2022)

12000 en 5 ans

C'est le nombre de violences policières CONNUES aux frontières des Balkans. Malgré la répression de leur parcours, des personnes en migration témoignent. Leur COURAGE rencontre la SOLIDARITÉ des 12 associations locales rassemblées au sein du Border Violence Monitoring Network qui documentent la situation. C'est grâce à ces voix et ces actes que cette réalité nous parvient.



## 4) On the field... – Difficulties and sensitive methods to work on a « sensitive » field

*“The population studied is highly stigmatised, suffering or violented. We are therefore referring both to spaces and to social conditions that institutions treat as exceptional or deviant from what should be the rule” (Bouillon, Fresia, Tallio, 2005).*

### How to...

- Access to this field?
- Deal with the institutions and police forces?
- Share my findings?

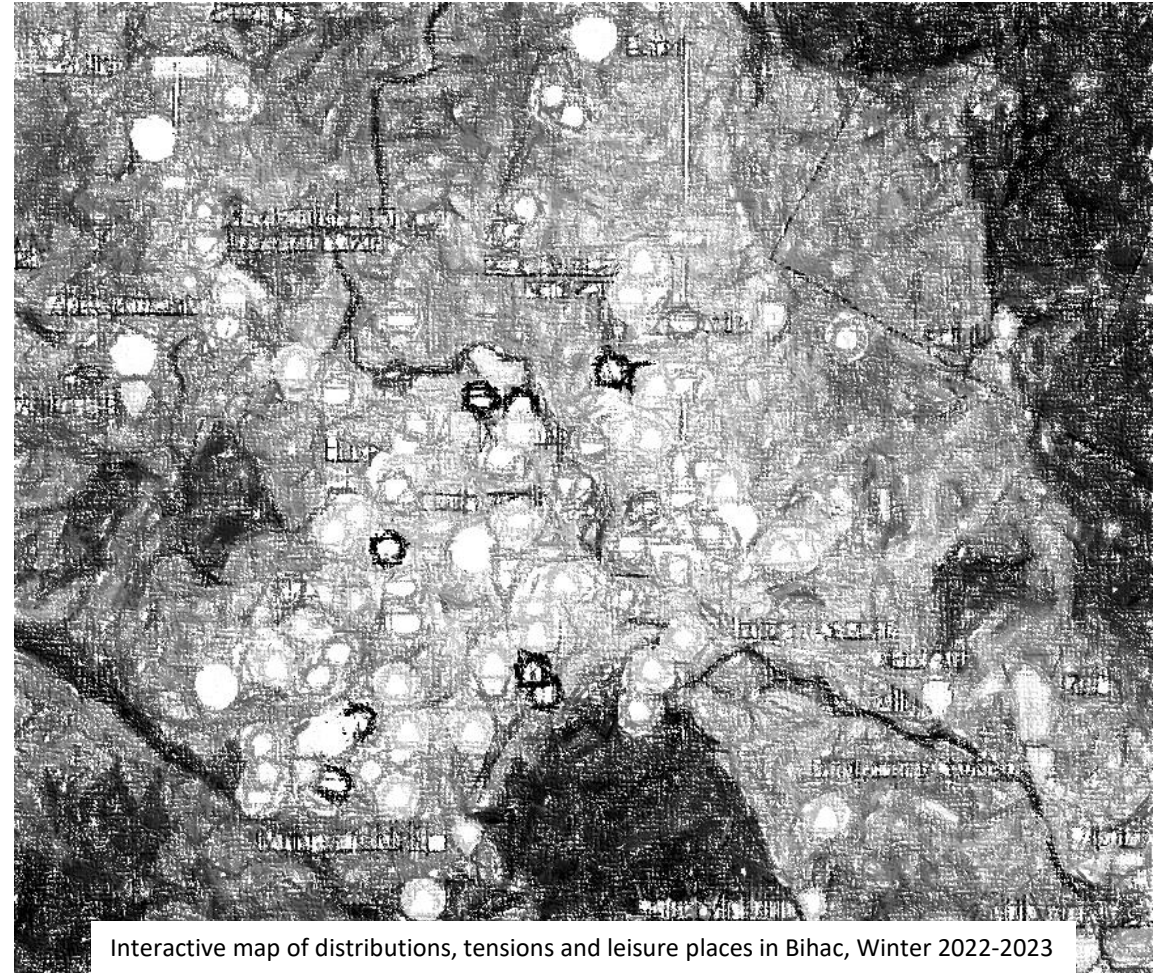
### ...a two-level methodology

- A) « Participative observation » in an NGO > understanding of squats and non-formal camps
- B) Official visits and interviews > understanding of governmental « TRCs » and testimonies

## 4) On the field... - Difficulties and sensitive methods to work on a « sensitive » field

### A) Being involved in an « illegalised » NGO

- No Name Kitchen
  - Criminalization of people on the move and some NGOs
  - Discovering squats by marauding and distributions (food, hygiene, health care), meeting migrant people and understanding their choice
- Different resources are available according to people's « choices » of location
- Different constraints (evictions, tensions...)
- Risk of losing access to official interviews



Interactive map of distributions, tensions and leisure places in Bihac, Winter 2022-2023

*“Geography is first and foremost a means of waging war” (Lacoste, 1976)*

## 4) On the field... - Difficulties and sensitive methods to work on a « sensitive » field

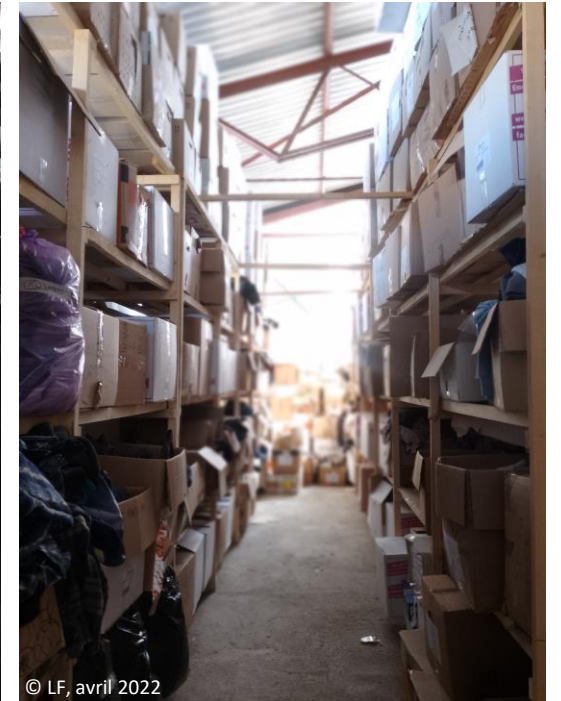
### A) Being involved in an « illegalised » NGO

- Criminalization of people on the move and some NGOs
  - Discovering squats by marauding and distributions (food, hygiene, health care), meeting migrant people and understanding their choice
- Different ressources are available according to people's « choices » of location
- Different constraints (evictions, tensions...)
- Risk of losing access to official interviews
- Sound recording: to take account of potentially violent environments, and to approach the individual through his or her sound dimension (Augoyard, 2003): when text and image are not enough

[Podcast : Food distribution](#)



© LF, mai 2022



© LF, avril 2022



© LF, avril 2022



© LF, janvier 2023

## 4) On the field... - Difficulties and sensitive methods to work on a « sensitive » field

### A) Being involved in an « illegalised » NGO

- Criminalization of people on the move and some NGOs
  - Discovering squats by marauding and distributions (food, hygiene, health care), meeting migrant people and understanding their choice
- Different ressources are available according to people's « choices » of location
- Different constraints (evictions, tensions...)
- Risk of losing access to official interviews
- Sound recording: to take account of potentially violent environments, and to approach the individual through his or her sound dimension (Augoyard, 2003): when text and image are not enough

[Podcast : Shower session](#)





## 4) On the field... - Difficulties and sensitive methods to work on a « sensitive » field

### B) Running interviews and visiting camps

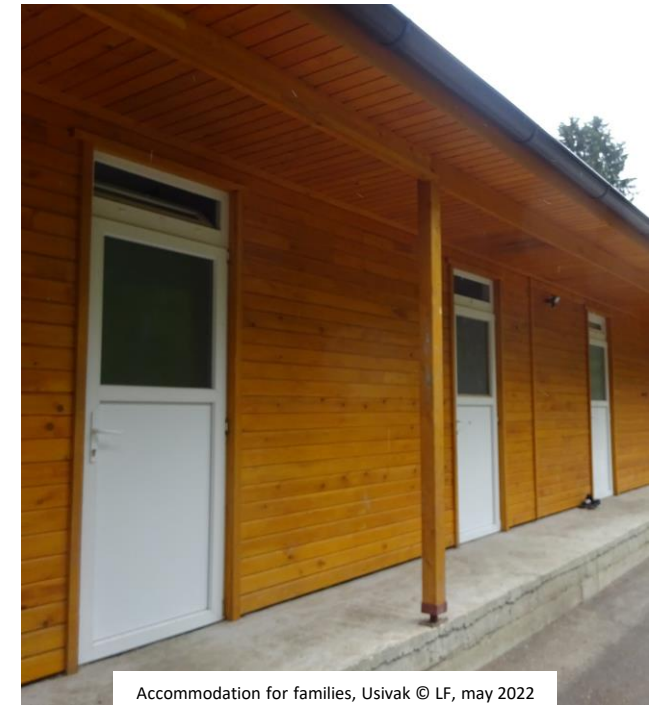
- Understanding the importance of the encampment economy > more than 88 millions € from June 2018 to January 2021
- 6 persons per container, dozens in hangars, rooms depending on people's profiles
- Impossibility to close sanitarities
- Lack of hygiene
- Lack of food
- Tensions...



Vidéo from a container in Lipa. January 2023



Open room under hangar, Blažuj © LF, February 2023



Accommodation for families, Usivak © LF, may 2022

## 4) On the field... - Difficulties and sensitive methods to work on a « sensitive » field

### B) Running interviews and visiting camps

- Understanding the importance of the encampment economy > more than 88 millions € from June 2018 to January 2021
- 6 persons per container or dozens in hangars, depending on people's profiles
- Impossibility to close sanitarities
- Lack of hygiene
- Lack of food in Lipa camp
- Tensions...



« All in one sanitary for vulnerable men in Usivak » © LF, February 2023



« No Nation Fashion » container in Usivak © LF, February 2023

## 4) On the field... - Difficulties and sensitive methods to work on a « sensitive » field

### B) Running interviews and visiting camps - the importance of food

#### In Blažuj...



An old billboard and the open kitchen in Blažuj © LF, February 2023



#### In Usivak...



The collective kitchen in Usivak © LF, February 2023

- Getting money / sharing good time

## 4) On the field... - Difficulties and sensitive methods to work on a « sensitive » field

### B) Running interviews and visiting camps - the importance of food

In Lipa...



Breakfast, lunch and dinner in Lipa, 12th of February 2023. © Anonym

- Outside kitchen available but hard to get the ingredients, even though there are shops
- Inside kitchen available but under restrictions
- Go to squats / change tactics

*« (...) there is the complain mechanism for the food, and all the menus are designed and approved by professional nutritionists. (...) the beneficiaries receive the minimum size and the minimum calories, (...) there are open kitchen in the camps, so beneficiaries have the freedom to cook »*

O.I, IOM Bihac, feb.2023

## 4) On the field... – Difficulties and sensitive methods to work on a « sensitive » field

### B) Running interviews and visiting camps – camps may be places of ressources

- Connecting people, finding information
- Finding material support (food, accommodation, NFIs, wi-fi...)
- Getting money, work



The main street and its illegal shops in Blažuj © LF, February 2023

## 4) On the field... - Difficulties and sensitive methods to work on a « sensitive » field

### C) Mapping hidden places and keeping tracks

- Places of encampment can disappear
- Mapping invisible realities with the “Spatial Reconstruction Game” (Bronner and Ramadier, 2006)
  - Representation of space
  - Discussions based on experiences
- Testimonies
- Evacuation plans



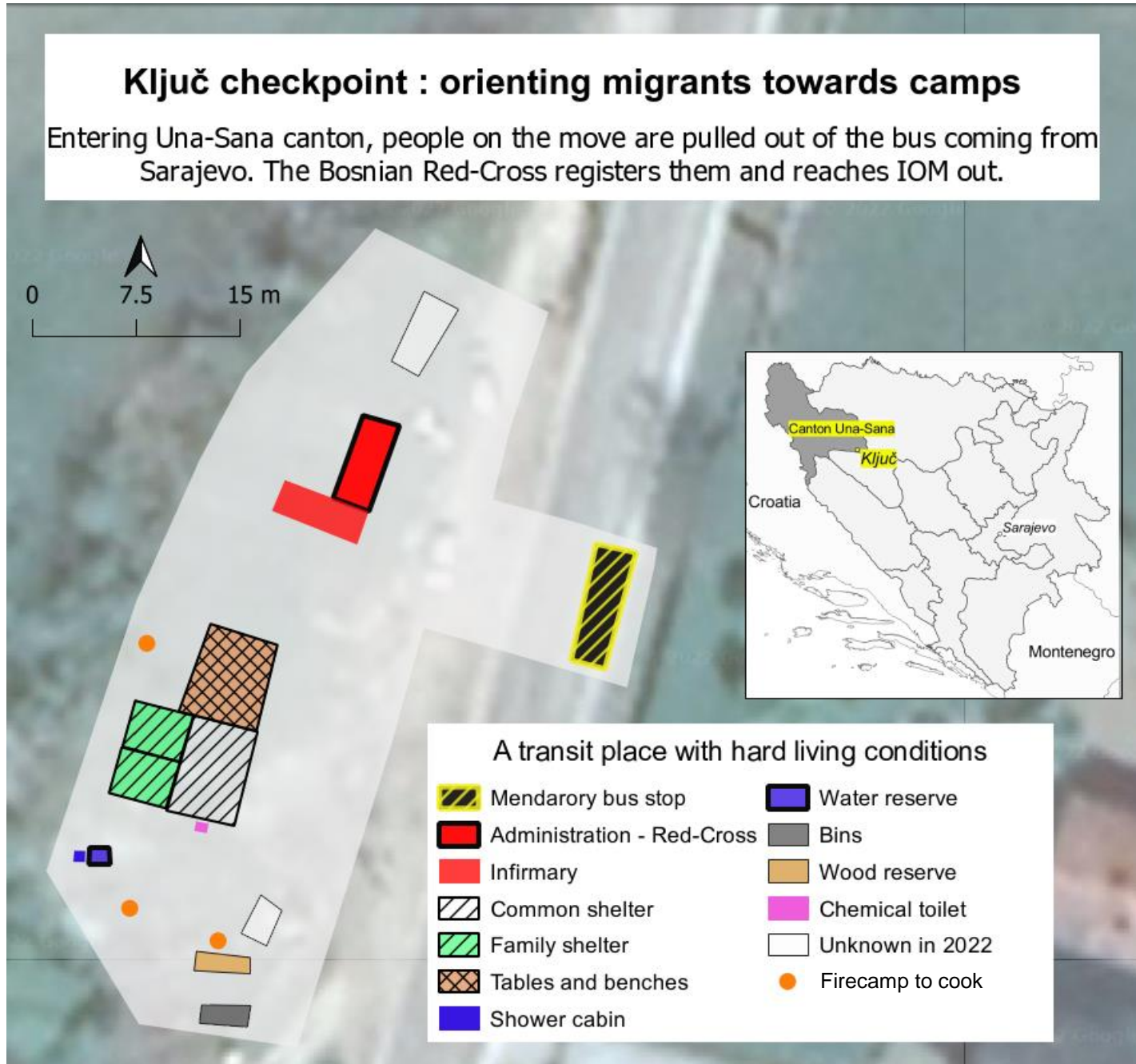
The Ključ checkpoint, Spring 2022...



... and February 2023 | © LF

# 4) On the field...

Mapping hidden places and keeping tracks



## 4) On the field... - Difficulties and sensitive methods to work on a « sensitive » field

### C) Mapping hidden places and keeping tracks

- Places of encampment can disappear
- Mapping invisible realities with the “Spatial Reconstruction Game” (Bronner and Ramadier, 2006)
  - Representation of space
  - Discussions based on experiences
- Testimonies
- Evacuation plans



Vučjak camp in december 2019... © Google image



Vučjak camp in feb.2022© LF





## 4) On the field... - Mapping hidden places and keeping tracks



## 4) On the field... - Mapping hidden places and keeping tracks



Closure of Miral camp, Vledika Kladusa, BiH, May 2022 © LF



The Benedict factory, Vledika Kladusa, BiH, feb.2023 © LF

## 4) On the field... - Mapping hidden places and keeping tracks

1) So this is the entrance, right ?

2) These are the fences.

The ropes ?

Yeah, the ropes.

[speaking Spanish]

He is doing first the perimeter, the all fences of Alcatraz (laughs).

3) Oficinas para IOM. They are five, but just put three.

4) La calle principale. Principal street.

5) The kitchen

[speaking Spanish]

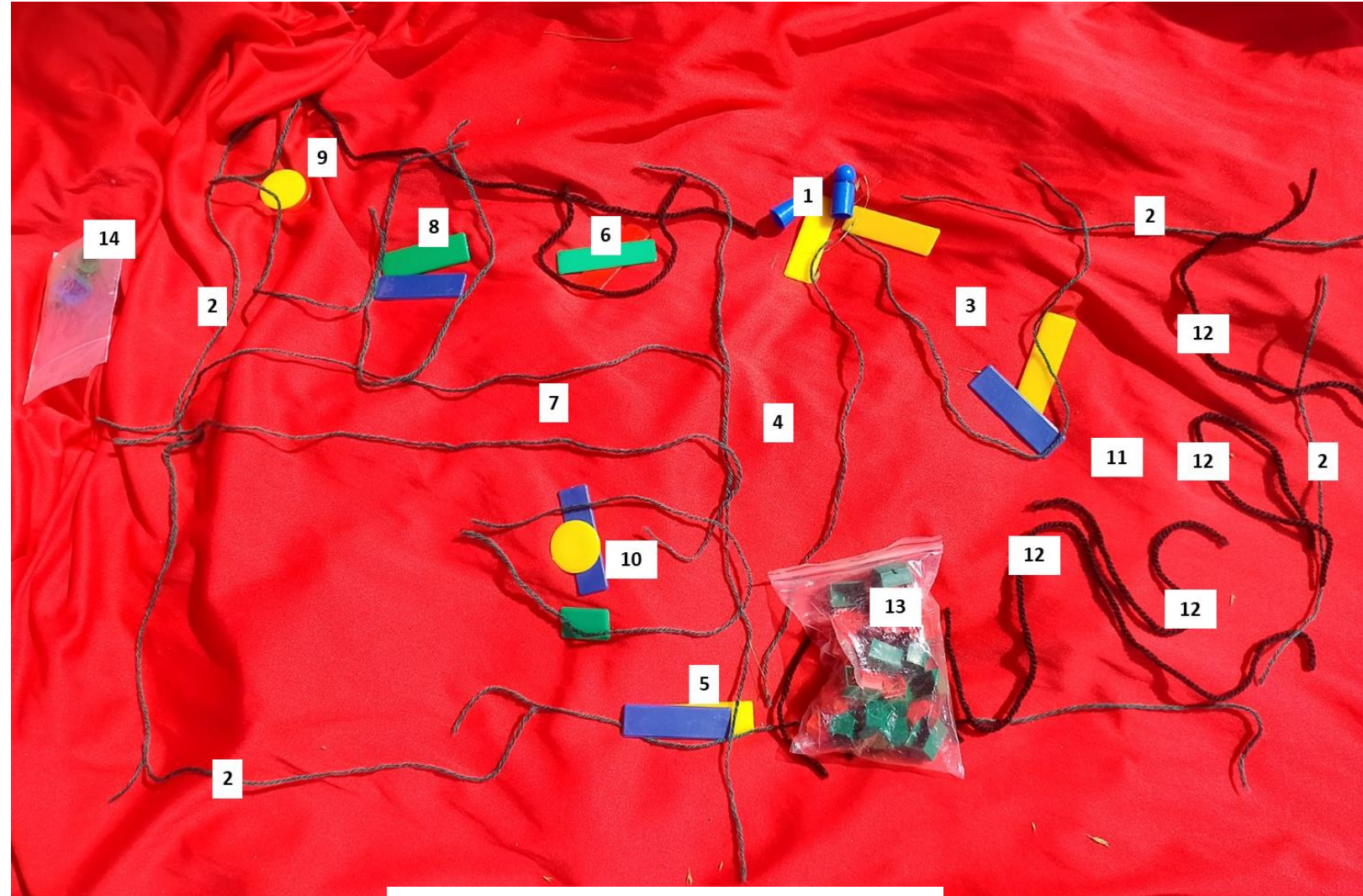
6) Medical area

7) This is the street.

8) And this is the quarantine area, this one he is putting now.

9) And here is where they live

[speaking Spanish]



Lipa camp from 4 Cubans point of view, june 2022 | © LF

## 4) On the field... - Mapping hidden places and keeping tracks

10) This is for IPSIA... ? Si.

[speaking Spanish]

This is the medical area, like intensive care area.

**For the quarantine ?**

No, there is also quarantine area.

[speaking Spanish]

11) Pakistanis, Afghanis... y todos. Mucho mucho containers.

12) *Les ficelles noires sont placées pour matérialiser les barrières dans un second temps ; après que l'espace vide ait été indiqué comme hébergeant les autres nationalités.*

And this is the kitchen [showing number 5]

[speaking Spanish]

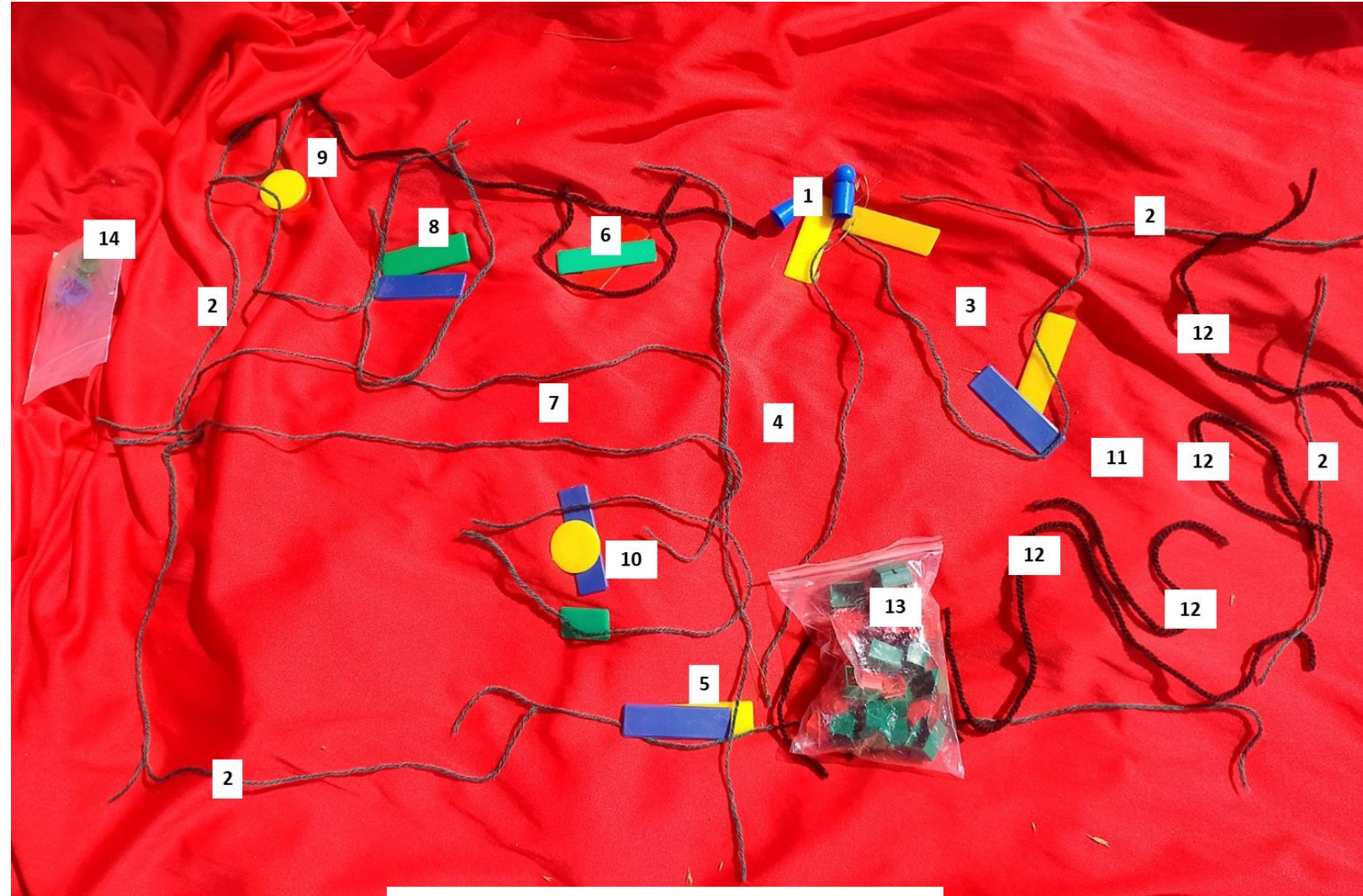
**What is this ?**

13) Psychologist, psychiatrics, other offices.

(...)

[speaking Spanish]

14) Here they are constructing a new area.



Lipa camp from 4 Cubans point of view, june 2022 | © LF

## 4) On the field... - Mapping hidden places and keeping tracks

- 1) Containers for people
- 2) My container, and UNFPA
- 3) Quarantine...
- 4) MdM, register.

04'25''

- 5) Restaurant.  
**Big one ?**

Yes.

- 6) Containers...
- 7) Containers...

- 8) Toilets and bathrooms
- 9) Containers

- 10) Small containers

06'20''

[checking translator]

- 11) [Store ? Outside Lipa ? Equipment warehouse ?](#)

Yes.

- 12) Football  
(...)

- 13) **And where is entrance ? The gate ?**

Here.

- 14) This is IPSIA

09'00''

- And for you, where is the best place ? The good place ?**

(...) [checking translator]

I am mostly in the room.



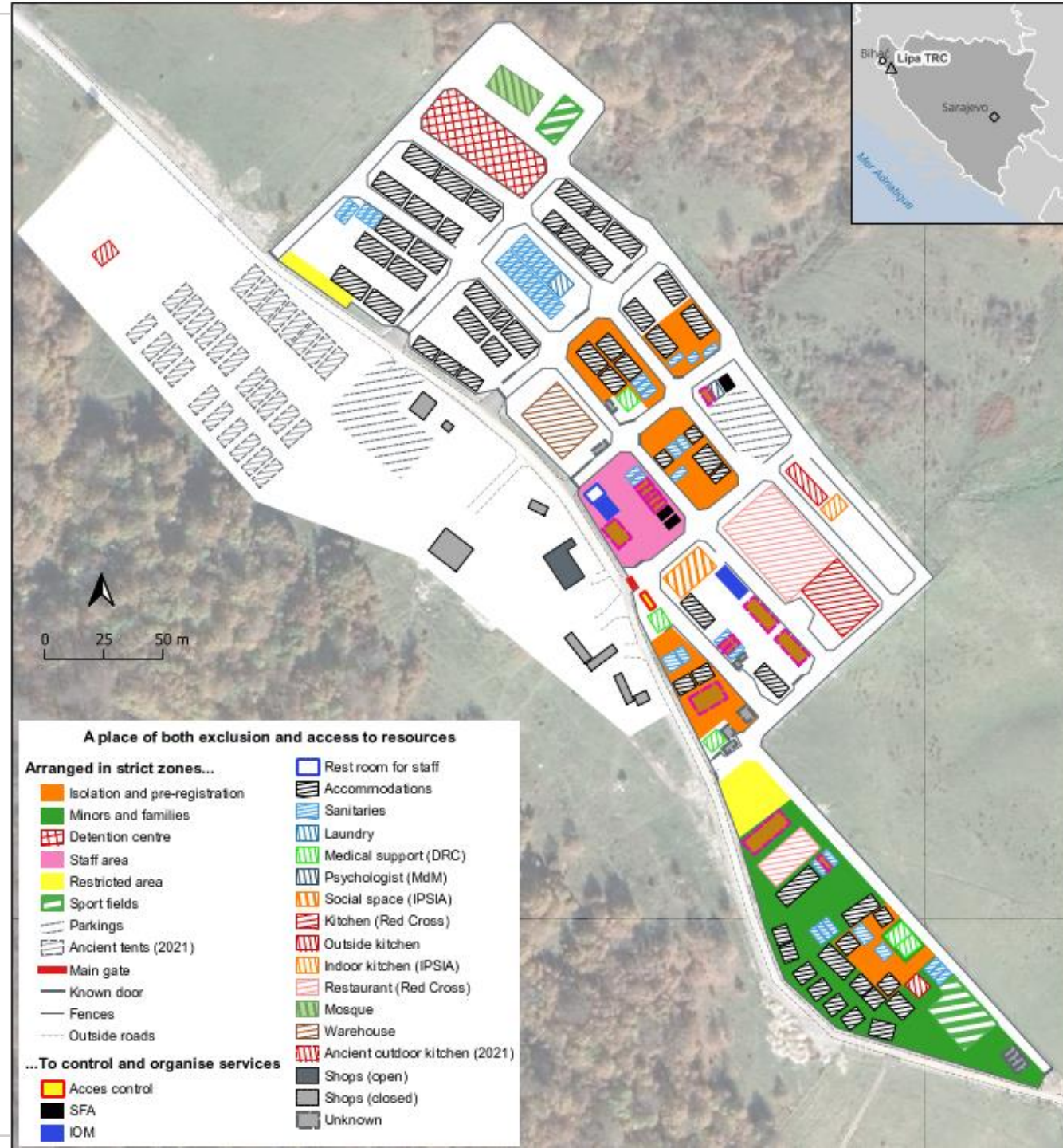
La camp de Lipa reconstruit et raconté par une personne migrante  
© LF, février 2023

## 4) On the field... -

### Mapping hidden places and keeping tracks

- The « Governmentality » tools of Michel Foucault / how to control people (1975) :

- 1) Fence
- 2) Division of space
- 3) Attribution of one role to each space
- 4) Moving bodies according to government's wishes



## 4) On the field... – Mapping hidden places and keeping tracks

49'10''

- 1) Ça c'est le poste de police.
  - 2) **Les barrières...**
  - 3) Ça c'est le petit poste police pour faire les empreintes, et tout.
  - 4) Et ça c'est le chalet pour les nouvelles entrées. Le chalet, là, il faut que tu restes dedans... **il faut cacher ton téléphone. Tu caches pas ton téléphone ? Le soir, plus rien.**
  - 5) Là il y a... [en Arabe] **la tente. Grande tente.** Grande tente ici, pour les nouvelles arrivées.
  - 6) Ça c'est le médecin : tu sors de la tente, tu rentres dans le médecin.
  - 7) Là il y a juste je ne sais pas quoi, une grande maison... je n'y rentre pas... [en Arabe] **la justice. La justice, voilà. Comme ça, pour par exemple « la Croatie elle m'a frappé ». Tu parles avec l'IOM,** et tu rentres normal dans la justice. « Comment frappé ? Comment ça ? »... il y a des gens très sympas, là. **C'est pour faire des rapports ?** Des rapports, voilà.
  - 8) [une route] [57'50''] **et la ficelle rouge c'est quoi ?** La route.
  - 9) **Le restaurant.** Le restaurant, là.
  - 10) Là, il y a une maison pour... les repris de justice. **Pour expulser les gens ?** Non. Par exemple tu es rentré dans la justice, tu sors, et tu vas là.
  - 11) Ça, c'est quand tu veux quelque chose, tu vas aller là.
- 52'20''
- 12) Ça c'est une petite maison pour laver les vêtements.



Blažuj camp from 2 Algerians point of view, June 2022 © LF

## 4) On the field... - Mapping hidden places and keeping tracks

13) Ici, il y a deux chalets, grands chalets.

[54'35''] Et il y a quoi dans les chalets là ?

Il y a les Afghans, 500 personnes, 600 personnes dans le chalet.

**C'est un dortoir en fait ?**

C'est un grand chalet.

14) Il y a un grand chalet pour manger...

Tu as regardé les vidéos déjà, **c'est catastrophe.**

15) Ici, tous des (...) **des containers.** Des containers.

C'est facile de trouver où dormir, tu trouves un container vide, tu entres, tu appelles l'IOM et ils apportent un chauffage. Mais l'électricité, à minuit, pas d'électricité.

16) **Les douches et les toilettes. C'est là.**

**Catastrophique, elle est là.**

Il y a des chiens dans les camps.

Il y a le restaurant des Afghans...

55'10''

Ah ça c'est un positif. Quand tu rentres là [11] il m'a donné shampoing, gel douche, rasoir, crème pour se raser, les cosmétiques, et il m'a donné (...) la couette pour dormir.

Une couverture ?

Oh lala, catastrophique la couverture. Il m'a donné un coupe-ongle... un savon pour laver les mains. Il m'a donné tout ça, mais pas de douche. Tu vois ? Pas de douche. Je vais aller chez Ines pour faire la douche aujourd'hui.

**La douche elle est froide...**

**Froid, très très froid. Pas froid : très froid.**



Blažuj camp from 2 Algerians point of view, June 2022 © LF



## 4) On the field... - Mapping hidden places and keeping tracks

Et il y a combien de personnes dans le camp en ce moment ?

56'20''

1 000 personnes.

1000... 1 500 personnes. Plus, parce que dans un container tu vas trouver 8-6 personnes. Moi, dans le container avec mes amis, on est 8. Après... tu m'as dit les plus et les moins...

**Tu m'as dit les moins là (rires).**

Les plus aussi, c'est très important. Tu vois ?

Quand tu rentres dans le camp, par exemple... 4 heures du matin. Tu rentres comme tu veux, il n'y a personne... La personne elle m'a donné à manger, elle m'a donné tout. Elle m'a donné l'ID sur place. La carte ID - « comment tu t'appelles, tu habites où... tu vas aller voir la police pour les empreintes... ». 57'35''

**Il y a le côté positif. Mais le négatif, beaucoup plus en fait...**

**Merci beaucoup.**

17) Et là il y a un grand terrain pour jouer et tout. Il y a des gens très sympas ici.



Blažuj camp from 2 Algerians point of view, June 2022 © LF

# Conclusion

- Different ways of defining « camps » and their « environments », many gaps of information
  - The maps will always lie and will never be exhaustive
- An indicator may give some ideas > need to be completed with local context and local rules
  - Meeting people to understand their feelings, their needs and their representations > complete the indicator
- Documenting margins and keeping tracks of what the governments don't want to talk about / « geographical fight »
- In Bosnia and Herzegovina, the external environment seems to be used to slow down people on the move when they get close to the EU/Croatian border
- Same tools used in prisons to control internal environment. Quality of living conditions depend on profile (nationality, gender, marital status, age) and location
- Despite of harsh conditions, camps may be ressources. Even with militarisation and violences, people continue their journey

# Bibliography

- Acker, William (2021) *Où sont les « gens du voyage »? : inventaire critique des aires d'accueil*, Editions du commun.
- Agier, Michel (2014) *Un monde de camps*, Paris, la Découverte.
- Ahmetašević, Nidžara et Mlinarević, Gorana (2022) *Mlinarević, G. et Ahmetašević, N. « Getting stuck en route 'from Dayton to Brussels'. EU conditionality as an obstacle to accession», discussion paper, Friedrich-Ebert-Stiftung, 2022.*
- Arnold, Markus, Duboin, Corinne et Misrahi-Barak, Judith (2021) Introduction, in *Borders and Ecotones in the Indian Ocean: Cultural and Literary Perspectives*, Presses universitaires de la Méditerranée.
- Augoyard, Jean-François (2003) Une sociabilité à entendre, *Espaces et sociétés (Paris, France)*, Erès, 4 (115), p. pp.25-42.
- Dujmovic, Morgane (2019) *Une géographie sociale critique du contrôle migratoire en Croatie : ancrages et mirages d'un dispositif*, These de doctorat. Aix-Marseille.
- Faburel, Guillaume (2010) Débats sur les inégalités environnementales : une autre approche de l'environnement urbain, (2).
- Foucault, Michel (1975) *Surveiller et punir : naissance de la prison*, Nachdr. der Ausg. 1975, Paris, Gallimard (Collection tel, 225), 360 p.
- Lussault, Michel (2009) *De la lutte des classes à la lutte des places*, Paris, Grasset (Mondes vécus), 220 p.
- Michalon, Bénédicte (2012) La mobilité au service de l'enfermement ? : Les centres de rétention pour étrangers en Roumanie, *Géographie et cultures*, (81) septembre, p. 91-110.
- Monsutti, Alessandro (2021) Les migrants sont-ils acteurs de leur trajectoire ?, *Desgrées du Loû, Annabel et Gosselin, Anne Éd., Penser les migrations à la lumière du pouvoir d'agir, (De Facto)*, décembre.
- Paddeu, Flaminia (2016) D'un mouvement à l'autre: des luttes contestataires de justice environnementale aux pratiques alternatives de justice alimentaire?, p. 37.
- Ramadier, Thierry et Bronner, Anne-Christine (2006) Knowledge of the Environment and Spatial Cognition: JRS as a Technique for Improving Comparisons between Social Groups, *Environment and Planning B: Planning and Design*, SAGE Publications Ltd STM, 33 (2), p. 285-299.
- Schlosberg, David et Collins, Lisette B. (2014) From environmental to climate justice: climate change and the discourse of environmental justice, *WIREs Climate Change*, 5 (3), p. 359-374.
- Tarrus, Alain (2017) Fluidité de l'identité du chercheur en situation d'immersion le long des territoires de circulations migratoires. Extraits de carnets d'enquête : Prizren, Kosovo, 2004. La Palme, Aude, 2014, Migrations Société, Paris, Centre d'Information et d'Etudes sur les Migrations Internationales, 167 (1), p. 41-52.
- Tazzioli, Martina (2017) The government of migrant mobs: Temporary divisible multiplicities in border zones, *European Journal of Social Theory*, 20 (4), p. 473-490.

# Some websites

- The Global Detention Project : <https://www.globaldetentionproject.org/>
- Migreurop : <https://migreurop.org/>
- Close the camps : <https://closethecamps.org/>
- No Name Kitchen : <https://www.nonamekitchen.org/>
- Border Violence Monitoring Network : <https://borderviolence.eu/>
- Instagram : IOM / Frontex / The unheardrefugees...

# Migrant people camps and their environments in Europe

## Methodology, maps and first results from Bosnia and Herzegovina

**Thanks a lot for your attention**

Any questions?

[Louis.fernier@univ-poitiers.fr](mailto:Louis.fernier@univ-poitiers.fr)