



HAL
open science

Sentinel lymph node biopsy and morbidity outcomes in early cervical cancer: Results of a multicentre randomised trial (SENTICOL-2)

Patrice Mathevet, Fabrice Lécuru, Catherine Uzan, Florent Boutitie, Laurent Magaud, Frederic Guyon, Denis Querleu, Virginie Fourchette, Marc Baron, Anne-Sophie Bats, et al.

► To cite this version:

Patrice Mathevet, Fabrice Lécuru, Catherine Uzan, Florent Boutitie, Laurent Magaud, et al.. Sentinel lymph node biopsy and morbidity outcomes in early cervical cancer: Results of a multicentre randomised trial (SENTICOL-2). *European Journal of Cancer*, 2021, 148 (5), pp.307-315. 10.1016/j.ejca.2021.02.009 . hal-04462543

HAL Id: hal-04462543

<https://hal.science/hal-04462543v1>

Submitted on 22 Jul 2024

HAL is a multi-disciplinary open access archive for the deposit and dissemination of scientific research documents, whether they are published or not. The documents may come from teaching and research institutions in France or abroad, or from public or private research centers.

L'archive ouverte pluridisciplinaire **HAL**, est destinée au dépôt et à la diffusion de documents scientifiques de niveau recherche, publiés ou non, émanant des établissements d'enseignement et de recherche français ou étrangers, des laboratoires publics ou privés.



Distributed under a Creative Commons Attribution - NonCommercial 4.0 International License

Sentinel Lymph Node Biopsy and Morbidity Outcomes in Early Cervical Cancer: Results of a Multicenter Randomized Trial (SENTICOL-II)

Patrice Mathevet¹ MD PhD, Fabrice Lécuru² MD PhD, Catherine Uzan³ MD PhD, Florent Boutitie⁴ PhD, Laurent Magaud⁵ PhD, Frederic Guyon⁶ MD, Denis Querleu⁷ MD PhD, Virginie Fourchette² MD PhD, Marc Baron⁸ MD, Anne-Sophie Bats⁹ MD PhD, on behalf of the Senticol2 group

¹ Patrice Mathevet, CHU Vaudois, Service de gynécologie, avenue P. Decker 2, 1011 Lausanne, Switzerland ; Hospices Civils de Lyon, Public Health Department, Lyon, 69003, France;

² Fabrice Lécuru and Virginie Fourchette, Breast Gynecology and Reconstructive Surgery Department, Curie Institute, 26 rue d'Ulm, 75005 Paris, France.

³ Catherine Uzan, Institut Gustave Roussy, 114 rue Edouard Vaillant, 94805 Villejuif Cedex, France; Hôpital Pitié Salpêtrière, Service de Gynécologie, 83 boulevard de l'hôpital 75013 Paris, France ; and Institut Universitaire de Cancérologie, Université Sorbonne, INSERM U938, Paris, France.

⁴ Florent Boutitie, Hospices Civils de Lyon, Service de Biostatistique, 69003 Lyon, France; Université Lyon 1, Laboratoire de Biométrie et Biologie Evolutive, Equipe Biostatistique-Santé, 69100 Villeurbanne, France.

⁵ Laurent Magaud, Hospices Civils de Lyon, Département de Santé Publique, 69003 Lyon, France; Université Lyon 1, EA 7425 HESPER, 69008 Lyon, France.

⁶ Frédéric Guyon, Institut Bergonié, 229 Cours de l'Argonne, 33000 Bordeaux, France.

⁷ Denis Querleu, Institut Claudius Regaud, 1 av. Irène Joliot-Curie, 31059 Toulouse Cedex 9, France ; ESGO, Brussels, Belgium.

⁸ Marc Baron, Centre Henri Becquerel, 1 Rue d'Amiens, 76038 Rouen, France.

⁹ Anne-Sophie Bats, Hôpital Européen Georges Pompidou, Service de gynécologie, 20-40 rue Leblanc, 75908 Paris Cedex 15, France.

‡ **On behalf of the Senticol2 group:**

P. Morice, Institut Gustave Roussy, Villejuif, France

P. Mathevet, Hospices Civils de Lyon, Lyon, France

E. Stoeckle, Institut Bergonié, Bordeaux, France

D. Querleu, Institut Claudius Régaud, Toulouse, France

V. Fourchette, Institut Curie, Paris, France

F. Lécuru and A.S. Bats, HEGP, Paris, France

M. Baron, Centre Henri Becquerel, Rouen, France

O. Graesslin, Institut Mère Enfant, Reims, France

J. Lévèque, Hôpital Sud Anne de Bretagne, Rennes, France

B. Ott, Hôpital du Hasenrain, Mulhouse, France

E. Daraï, Hôpital de Tenon, Paris, France

D. Lanvin, Clinique de l'Espérance, Mougins, France

C. Pomel, Centre Jean Perrin, Clermont Ferrand, France

H. Marret, Hôpital Bretonneau, Tours, France

G. Mage, Centre Hospitalier Régional Universitaire, Clermont Ferrand, France

G. Houvenaeghel, Institut Paoli-Calmettes, Marseille, France

J.J. Baldauf, Hôpital de Haute Pierre, Strasbourg, France

V. Conri, Hôpital Pellegrin, Bordeaux, France

S. Douvier, Centre Hospitalier Universitaire, Dijon, France

Y. Delpech, Hôpital Lariboisière, Paris, France

E. Leblanc, Centre Oscar Lambret, Lille, France

Y. Fouché, Centre Antoine Lacassagne, Nice, France

L. Boulanger, Hôpital Jeanne de Flandre, Lille, France

P. Descamps, Centre Hospitalier Universitaire, Angers, France

J.M. Classe, Centre René Gauducheau, Nantes, France

D. Raudrant, Centre Hospitalier Lyon Sud, Lyon, France

P. Rouanet, Centre Val d'Aurelle, Montpellier, France

Funding: by the French national cancer institute - STIC 2008 & 2012.

Corresponding author:

Pr Patrice Mathevet,

Service de gynécologie, CHU Vaudois,

avenue P. Decker 2,

1011 Lausanne, Suisse

Telephone: + 41 2 1314 6727 / Patrice.Mathevet@chuv.ch

Running head: sentinel-node resection only in early cervical cancer.

Presented in part at:

the 2015 ASCO Annual meeting, Chicago, 29 May – 2 June 2015.

the 2017 SGO Annual Meeting, National Harbor, 12-15 March 2017.

Highlights:

- Randomized study comparing sentinel node biopsy and pelvic lymph node dissection.
- Sentinel node biopsy alone is associated with decreased minor lymphatic morbidity.
- No increased risk of recurrence while omitting pelvic lymph node dissection.

Sentinel Lymph Node Biopsy and Morbidity Outcomes in Early Cervical Cancer: Results of a Multicenter Randomized Trial (SENTICOL-II)

Abstract

Introduction

Pelvic lymph-node dissection has been the standard of care for patients with early cervical cancer. Sentinel node (SN) mapping is safe and feasible and may increase detection of metastatic disease, but benefits of omitting pelvic lymph-node dissection in terms of decreased morbidity has not be demonstrated.

Material and Methods

In an open-label study, patients with early cervical carcinoma (FIGO 2009 stage IA2 to IIA1) were randomly assigned to SN resection alone (SN arm) or SN and pelvic lymph node dissection (SN+PLND arm). SN resection was followed by radical surgery of the tumor (radical hysterectomy or radical trachelectomy). The primary endpoint was morbidity related to the lymph-node dissection; 3-year recurrence-free survival was a secondary endpoint.

Results

A total of 206 patients were eligible and randomly assigned to the SN arm (105 patients) or SN+PLND arm (101 patients). The majority of patients had stage IB1 lesion (87.4%). No false negative case was observed in SN+PLND arm. Lymphatic morbidity was significantly lower in the SN arm (31.4%) than in the in SN+PLND arm (51.5%; $p=0.0046$), as was the rate of post-operative neurological symptoms (7.8% vs. 20.6%, $p=0.01$; respectively). However, there was no significant difference in the proportion of patients with significant lymphedema between the 2 groups. During the 6-month post-operative period, the difference

in morbidity decreased over time. The 3-year recurrence-free survival was not significantly different (92.0% in SN arm and 94.4% in SN+PLND arm).

Conclusion

SN resection alone is associated with early decreased lymphatic morbidity when compared with SN+PLND in early cervical cancer.

Key words: Uterine cervical neoplasm; sentinel node biopsy; lymphadenectomy; morbidity; quality of life.

Introduction

The most important prognostic factor in early cervical cancer is lymph node status [1,2]. Primary surgical treatment, including radical hysterectomy and pelvic lymph node dissection (PLND) is considered the standard of care [3]. Currently, sentinel node (SN) identification is considered an effective method for the evaluation of lymphatic dissemination [4-6]. In early cervical carcinoma, SN identification has important advantages including a low rate of false negative rates. The other advantages are: identification of possible ectopic metastatic SN due to aberrant lymphatic drainage, identification of a limited number of nodes sent for frozen section assessment during surgery and, the ability to provide more precise information, such as detection of micrometastases. These advantages lead to more tailored recommendations for adjuvant treatment [5,6]. Intraoperative complications of PLND include hemorrhage and ureteral and nerve lesions [7,8], and postoperative complications, such as lymphocyst or lymphedema may develop [8]. In addition, it has been shown that the impact of lymphadenectomy on lower limb edema, pain, or heaviness, is underestimated [8-10]. These consequences may be related to the number of nodes sampled during lymph node dissection [10,11].

Quality of life is another crucial element for patients with early cervical cancer who are typically young women [10]. In many tumors (breast cancer, vulvar cancer, melanoma), SN biopsy alone has been reported to decrease morbidity in comparison with regional complete lymph node dissection [12-14], but this has not been demonstrated in a prospective study in cervical cancer. We report herein a multicenter prospective randomized controlled trial comparing SN resection alone to SN resection and PLND in early cervical cancer patients evaluating early and late complications.

Material and Methods

Eligibility criteria

SENTICOL-II (INCA trials and Clinicaltrials #NCT01639820) was approved by an ethics committee (Comité de Protection des Personnes Sud-Est IV, decision A08-223), and all patients provided written informed consent before inclusion. Patients were recruited at 28 French centers (16 university hospitals, 11 cancer centers, and 1 private hospital) with experience in laparoscopic surgery and SN biopsy in cervical cancer. Patients had biopsy-proven early primary cervical cancer meeting International Federation of Gynecology and Obstetrics (FIGO 2009) criteria for stage IA1 with lymphovascular space invasion (LVSI), IA2, IB1 or IIA1. Inclusion and exclusion criteria are listed in the Supplementary files.

Study Design and objectives

SENTICOL-II was a multicenter prospective randomized controlled trial comparing SN biopsy alone (SN arm) to SN biopsy and PLND (SN+PLND arm) in early cervical cancer (March 1, 2009 to June 30, 2012). Randomization was performed during surgery when eligible patients fulfilled these criteria: performance of a double detection of the SN (isotopic+colorimetric), lymphoscintigraphy obtained, bilateral identification of the SNs, and negative intraoperative assessment of the SNs, when performed. A dynamic balanced open label randomization stratified by center with a 1:1 allocation using block size of 4 was performed during surgery.

Adverse events were evaluated using the National Cancer Institute Common Toxicity Criteria (NCI-CTCAE) version 3.0. Minor complications were defined as grade 1-2 adverse events and major complications were grade 3-5 adverse events. The primary endpoint was the

frequency of patients having one or more early lymphatic complications (≤ 6 months) following the lymphatic section of the NCI-CTCAE classification (Table 1 Supplementary files). Secondary endpoints included quality of life (SF-36), SN detection rates, and oncologic assessment (recurrence, death) up to 3 years in both arms and false negative rate of the SN technique in the control arm (SN+PLND arm).

SN technique, surgery, and lymph node processing

One or more surgeon(s) per recruiting center were trained in the SN technique for cervical cancer before participation in the study. These surgeons had performed previously more than 20 SN biopsies through laparoscopy for cervical cancer. These surgeons performed SN biopsy, PLND and other surgical procedures in all patients. All patients underwent SN identification with a combined method, according to the protocol described in the previous SENTICOL study [15] and detailed in the Supplementary files. After bilateral identification of the SN and eventually negative intraoperative assessment of the SN by frozen section evaluation, patients were randomized to one of the two arms and, if required, the PLND was performed. In case of no SN detection or unilateral detection, the patient was withdrawn from the study and a bilateral PLND was systematically performed (Figure 1 of the Supplementary files). In case of metastatic SN on frozen sections, the patients was not randomized. She underwent bilateral PLND + eventual para-aortic laparoscopic lymph-node dissection and then adjuvant chemo-radiotherapy.

Oncological management

The treatment of the primary tumor was performed in each center following an oncological management protocol (Figure 2 Supplementary files).

Due to metastatic nodes at final pathology, secondary lymphatic surgery was performed in 9 patients of the SN arm and 5 patients in the SN+PLND arm. In the SN arm: 1 patient underwent PLND, 2 para-aortic lymph-node dissection (PALND) and 6 both. In the SN + PLND arm, patients 5 underwent PALND. These patients were included in the final analysis even if they have increased morbidity due to the re-staging.

Patient follow-up

Patients were followed-up according to current guidelines at 1, 3, and 6 months. Early post-operative (up to 30 days following surgery) and late (between 30 days and 6 months following surgery) complications were recorded and classified as minor or major according to the NCI-CTCAE classification. In accordance with the protocol, the follow-up concerning the adverse events ceased at 6 months after the surgery.

The data necessary for the evaluation of lower limb lymphedema were acquired at inclusion and at the 1, 3 and 6 months visit. They were composed by objective measurements done by the gynecologist and two questionnaires, one completed by the patient and another completed by the investigator. Also at inclusion, the gynecologist evaluated if the patient was at risk of lower limb edema (presence of renal, cardiac or severe venous insufficiency, and measurement of Stemmer sign). Assessment of lymphedema included a measurement of the circumference at different levels of the right and left lower limbs (root of the thigh, thigh, knee, shank, ankle). Patients also completed a visual analog scale for four symptoms (heaviness, pain, tiredness, and cutaneous tension) at inclusion, 1, 3, and 6 months follow-up. The visual scale goes from 0 to 10 points, with a linear progression with 0 = no symptom and 10 = maximal symptom. The minimally important difference was 1 point.

Patients filled out the SF 36 quality of life questionnaire at inclusion and each follow-up visit (1, 3, and 6 months). Oncological events (recurrence and all deaths) were noted over 3 years of follow-up.

Statistical analysis

The sample size calculation was based on the use of a Chi-square test to detect a reduction in at least one early lymphatic complication from 17% in the SN+PLND group to 5.6% in the SN arm (26-28), with a type-one error of 5% and a power of 80%. After correction for reasons of non-randomization (SN not detected, node positive at frozen sections, major deviation to protocol, unilateral detection of SN) a total of 124 patients per arm were required.

Categorical variables were described and compared between the 2 groups using the Chi-square test (or Fisher's exact test when appropriate). The distribution of continuous variables was summarized using mean, standard error, median, first and third quartiles, and compared between the 2 groups with the Wilcoxon rank-sum test.

To evaluate the functional signs, we determined, for each post-operative visit (1, 3 and 6 months), the visual analog scale (VAS) score for the 4 following symptoms: heaviness, pain, tiredness and cutaneous tension. We then compared the values between the SLN group and the SLN+PLND group using the Chi-square test.

Primary and secondary endpoints were assessed according to the intention to treat principle, which included all randomized patients. The primary endpoint (proportion of patients with at least one complication) was compared between the 2 groups using the Chi-square test. Recurrence-free survival up to 3 years was estimated using the Kaplan-Meier method, and compared using the Log-rank test. P values less than 0.05 were considered significant. SAS software (Windows Version 9.2, SAS Institute Inc.) was used for the statistical analysis.

Role of the funding source

The study was supported by the French National Cancer Institute (STIC 2008 & 2012). The study sponsor had no role in the design, or conduct of the study, interpretation of data, or the writing of the manuscript.

Results

Among the 267 patients assessed for eligibility, 61 patients were not randomized due to unilateral SN (n=21), absence of SN detection (n=11), positive SN on frozen sections (n=15), incomplete SN procedure (n= 12), or because lymphoscintigraphy was not performed (n=2). Of the remaining 206 patients, 105 were randomized to the SN arm and 101 to the SN+PLND arm (Figure 1). There was no significant difference in terms of patient or tumor characteristics between the two arms (Table 1). Tumors were mainly squamous cell carcinoma (n=141, 68.4%) and stage IB1 (n=181, 87.9%).

SN detection and surgery

No adverse event, in particular no allergic reaction due to Patent Blue® (Bleu Patente V sodique, Guerbet, Roissy, France) or Nanocys® (Nanocis, Cis Bio International, Gif sur Yvette, France) injections, were observed during the detection period. Intraoperative frozen section examination was performed in 173 cases (n=83, 79.0%, in the SN arm vs. n=90, 89.1%, in the SN+PLND arm; p=0.06). Tumor surgery is described in Table 2 of the Supplementary files. There were 15 intra- or immediate post-operative complications: 6 (5.7%) were observed in the SN arm, and 9 (8.9%) in the SN+PLND arm (p=0.43): characteristics of these complications are presented in the Supplementary files.

SN histological analysis

A total of 770 SN were analyzed. The histopathological protocol of the SN and non-SN is presented in the Supplementary files. The median number of SNs identified was 3 per patient

and 1 per side, and was identical in the 2 arms. In the SN+PLND arm, the median number of non-SNs analyzed per patient was 13 (3-40). At final pathologic evaluation, there were 21 (10.2%) patients who had metastatic disease to the SN, and 26 SN had metastasis, including 8 macrometastasis, 9 micrometastases and 9 isolated tumoral cells (ITC). Table 2 summarizes the cases of metastatic SN without significant difference between the two groups. In the SN+PLND arm there was no false negative result using the SN technique. Also, there was no statistically difference in the proportion of patients with metastatic lymph-nodes when comparing patients with frozen sections performed and patients with frozen sections not performed (due to absence of suspicious SN): 18 cases out of 173 patients (10.3%) vs 3 cases out of 33 patients (9.1%) ($p= 0.72$).

Postoperative treatments:

In the 21 patients with metastatic nodes, 9 (8.6%) patients underwent a secondary lymph-node dissection in the SN arm (pelvic dissection: 1 case, para-aortic dissection only: 2 cases and pelvic+para-aortic: 6 cases) and 5 (5%) patients underwent a secondary lymph-node dissection in the SN+PLND arm (all para-aortic dissection) ($p=0.021$).

Adjuvant radio-chemotherapy was delivered in 29 patients due to metastatic nodes, parametrial invasion, or final tumoral diameter larger than 4 cm. The rate of adjuvant radio-chemotherapy was similar in both arms: 13 (12.5%) patients in the SN arm and 16 (15.8%) patients in the SN+PLND arm ($p=0.55$).

All morbidities (including lymphatic morbidity) related to these adjuvant treatments were included in the final analysis of the primary and secondary end-points.

Patient follow-up

Ninety percent of patients in the SN arm and 94% of patients in the SN+PLND arm reached their 3 follow-up visits. The presence of pre-operative risk factor of lymphedema at baseline was similar in the 2 arms: 12 (12.1%) patients in the SN arm and 10 (11.2%) patients in the SN+PLND arm ($p=1.0$). The proportion of patients with any grade lymphatic morbidity at 6-month follow-up was significantly lower in the SN arm ($n=33$, 31.4%) than in the SN+PLND arm ($n=52$, 51.5%; $p=0.0046$, Table 3). We also evaluated clinically the postoperative neurological complications following the NCI-CTCAE classification. These troubles were sensory and motor disturbances of obturator nerves or genito-femoral nerves. The proportion of patients with any grade postoperative neurological symptoms was significantly lower in SN arm ($n=8$, 7.8%) than in the SN+PLND arm ($n=20$, 20.6%, $p=0.01$) at 1-month follow-up, with a smaller difference at 3 months (8.7% vs. 19.1%, $p=0.06$) and 6 months (11.0% vs. 17.9%, $p=0.21$). There was no significant difference in the proportion of patients with significant lymphedema (grade 2 to 5) in the 2 arms (month 1: 0% ($n=0$) vs. 2.1% ($n=2$), ns, month 3: 2 (2.2%) vs. 3 (3.2%), ns, month 6: 2 (2.2%) vs. 0 (0%), ns). Tiredness was significantly greater for patients in the SN+PLND arm at 1 month but was not significant at 3 and 6 months (Table 4). The difference between the two arms concerning the other symptoms (heaviness, pain and cutaneous tension) were not significant. Concerning lymphedema, the main results are presented in Table 3 Supplementary files. There was no significant difference in the proportion of patients with significant lymphedema between the 2 groups.

Other 6-month post-operative morbidities are shown in Table 4 Supplementary files.

There was no difference at the different follow-up visits in postoperative complication rate, therapeutic management after SN procedure, readmission and times of hospitalization,

supplementary ambulatory visits, medical treatment, supplementary unplanned imaging or biology prescribed in outpatient clinic (Table 5 Supplementary files).

Patient follow-up was censored at 3 years and at that time, 27 patients were lost to follow-up (10 in the SN arm and 17 the in SN+PNLD arm). Eight recurrences or deaths were observed in the SN arm vs. 5 in SN+PNLD arm, yielding an estimated 3-year recurrence-survival of 92% and 94% in each arm, respectively (Log-rank: $p=0.48$; Figure 2). Only 2 nodal recurrences were observed: one in the pelvic area in the SN arm and one in para-aortic location in the SN+PLND arm. Distant metastases were observed in 4 patients in the SN arm and 2 patients in the SN+PNLD arm. In addition, vaginal or parametrial recurrences were observed in 3 patients in the SN arm and 2 patients in the SN+PLND arm. No port-site metastasis was reported during oncological follow-up.

Discussion

Our study showed that SN biopsy alone was associated with a significant reduction in lymphatic-related morbidity when compared to SN biopsy +PLND in early cervical cancer. Sensory and motor disturbances were also significantly reduced at post-operative month 1 in the SN arm. In a preliminary feasibility study (SENTICOL I), we found a detection rate of 97% with no false negative in case of bilateral detection, which is crucial for SN technique in early cervical cancer [15]. Although the SN technique has been widely studied in early cervical cancer [16], this is the first study to our knowledge to prospectively compare the morbidity, namely lymphatic, of SN biopsy alone versus full lymphadenectomy. Moreover, this is one of the expected benefits of the SN technique, which is regularly argued to justify its indication. Indeed, the number of sampled nodes is a well-known risk factor for lower limb lymphedema [10,11,17,18] as well as the removal of the lateral external iliac chain or of the circumflex iliac lymph nodes. Thus, SN biopsy, which relies on targeted and limited sampling of nodes, mainly located in interiliac region [19,20], should reduce the risk of lower limb lymphedema.

Lower limb lymphedema is a main component in quality of life in patients with gynecologic cancers [21]. In our study, we reported an increased risk of symptoms related to lymphedema and nerve complications in the SN+PLND arm. In their retrospective study including 152 gynecological cancers, Biglia et al. [17] showed that short-term incidence of lower limb lymphedema and nerve complications after lymphadenectomy was 36% and predictive of long-term persistence. Among the risk factors analyzed, the number of lymph nodes removed and adjuvant radiotherapy were significantly associated with increased incidence of minor

complications. In our study, there was no difference in adjuvant treatment between the two arms, and thus the number of lymph nodes removed may explain the observed difference. Another possible risk factor is secondary re-operation for complementary lymph-node dissection [8]. Only one patient having secondary surgery had another metastatic node. She was in the SN group and underwent a secondary para-aortic lymph-node dissection with one positive node at final pathology. As, all these patients with positive nodes at final pathology were treated with post-operative chemo-radiotherapy, and considering the worsened lymphatic morbidity of re-operation, we can suggest that omitting re-staging is a possible option in case of positive SN.

We report a low rate of lymphocele that was comparable in both arms (maximum 3.2% at month 3). In their prospective study examining the incidence of lymphocele following lymphadenectomy in 800 patients with gynecological cancer, Zikan et al. [21] found that higher number of lymph nodes obtained, and radical hysterectomy were independent risk factors for the development of symptomatic lymphocele. However, one should note that most lymphocele were asymptomatic. We must acknowledge that we did not perform systematic imaging in our patients, potentially explaining the low rate of lymphocele in our patients. Patients in SN arm had neither hospitalization/consultation nor additional imaging after surgery compared with SN+PLND arm. In our study, there was no significant difference in the proportion of patients with significant lymphedema between the 2 groups. At the 3-month visit (Table 3 Supplementary files), there is a trend to less lymphedema at the thigh level in the SN arm, but the difference is not significant, probably in relation with an insufficient number of patients evaluated, as 27% of measurements are missing.

The analyses of postoperative neurological symptoms shows a difference at the 1-month visit in favor of the SN arm. However, later evaluation of this symptom displays no significant

difference. This result can be related to several factors: spontaneous recovery of nerve function after neural ligation due to PLND, increased number of secondary lymph-node dissection in the SN arm leading to increased number of neural troubles.

As far as oncological follow-up, the recurrence free survival was similar in both arms of our study. Our data suggests that omitting PLND was not associated with an increased risk of recurrence in this cohort of patients with early cervical cancer. However, one must note that oncologic outcome was not the primary objective of our study, also 27 (13.1%) patients were lost to follow-up and 29 (14.1%) patients had post-operative chemo-radiotherapy.

The strengths of our study include the fact that it is the first prospective multicenter randomized trial comparing SN biopsy vs. SN biopsy and PLND, and assessing the morbidity of the two procedures. All participating centers had a prolonged experience with SN technique, as reflected by the high SN detection rate and the absence of false negative cases. Furthermore, 92.3% of patients attended their 3 follow-up consultations and the response rate for all QoL questionnaire was 69.3%. Similarly, we recognize that our study is not without limitations. The multicenter nature of the study may have led to variations in pre and post-operative management of the patients mainly due to variations in local treatment protocols. The follow-up for postoperative morbidity was limited to 6 months and; therefore, we might have missed late manifestations of lymphatic complications. The median number of non-SNs was 13 per patient. More extensive nodal dissection may induce more lymphatic morbidities [21,23]. In our study, 95.9% of surgeries were performed through laparoscopy or laparoscopically assisted vaginal approach. The recent publication of the LACC study [24] demonstrated that on an oncological point of view, laparotomy should be the surgical approach of choice for the management for early cervical cancer. Our results may not be extrapolated to patient treated through laparotomy. Finally, the measurement of limb

circumferences was missing in 27% of cases and this may have underestimated the incidence of lower limb lymphedema.

Conclusion

SN biopsy alone is associated with a lower rate of early lymph-related complications compared with full pelvic lymph-node dissection. This study confirms that SN alone is associated with decreased early morbidity and improved quality of life. Further randomized controlled studies, with longer follow-up, are encouraged to confirm these data. In addition, the impact of SN biopsy alone on oncologic outcomes must be confirmed in prospective randomized trials. Such is the aim of the SENTICOL III trial [25] that is currently underway.

Conflict of interest

The authors have no potential conflict of interest related to this publication to disclose.

Acknowledgments:

The authors thank Pr Pedro Ramirez (MDACC, Houston) and Mr. Philip Robinson for edition of the article.

References

1. Noguchi H, Shiozawa I, Sakai Y, Yamazaki T, Fukuta T. Pelvic lymph node metastasis of uterine cervical cancer. *Gynecol Oncol* 27(2):150–8, 1987
2. Fuller AF, Elliott N, Kosloff C, Hoskins WJ, Lewis JL. Determinants of increased risk for recurrence in patients undergoing radical hysterectomy for stage IB and IIA carcinoma of the cervix. *Gynecol Oncol* 33(1):34–9, 1989
3. Delgado G, Bundy B, Zaino R, Sevin BU, Creasman WT, Major F. Prospective surgical-pathological study of disease-free interval in patients with stage IB squamous cell carcinoma of the cervix: a Gynecologic Oncology Group study. *Gynecol Oncol* 38(3):352–7, 1990
4. Rob L, Strnad P, Robova H, Charvat M, Pluta M, Schlegerova D, et al. Study of lymphatic mapping and sentinel node identification in early stage cervical cancer. *Gynecol Oncol* 98(2):281–8, 2005
5. Roy M, Bouchard-Fortier G, Popa I, Grégoire J, Renaud M-C, Têtu B, et al. Value of sentinel node mapping in cancer of the cervix. *Gynecol Oncol* 122(2):269–7, 2011
6. Eiriksson LR, Covens A. Sentinel lymph node mapping in cervical cancer: the future? *BJOG* 119(2):129–33, 2011
7. Querleu D, Leblanc E, Cartron G, Narducci F, Ferron G, Martel P. Audit of preoperative and early complications of laparoscopic lymph node dissection in 1000 gynecologic cancer patients. *Am J Obstet Gynecol*. 195(5):1287–92, 2006
8. Achouri A, Huchon C, Bats AS, Bensaid C, Nos C, Lécuru F. Complications of lymphadenectomy for gynecologic cancer. *Eur J Surg Oncol* 39(1):81–6, 2013

9. Ryan M, Stainton MC, Jaconelli C, Watts S, MacKenzie P, Mansberg T. The experience of lower limb lymphedema for women after treatment for gynecologic cancer. *Oncol Nurs Forum* 30(3):417–23, 2003
10. Tada H, Teramukai S, Fukushima M, Sasaki H. Risk factors for lower limb lymphedema after lymph node dissection in patients with ovarian and uterine carcinoma. *BMC Cancer* 9(1):47, 2009
11. Ohba Y, Todo Y, Kobayashi N, Kaneuchi M, Watari H, Takeda M, et al. Risk factors for lower-limb lymphedema after surgery for cervical cancer. *Int J Clin Oncol* 16(3):238–43, 2011
12. Giuliano AE, Kirgan DM, Geunther JM, Morton DL. Lymphatic mapping and sentinel lymphadenectomy for breast cancer. *Ann Surg* 220:391-402, 1994
13. Van der Zee AG, Oonk MH, de Hullu JA, Ansink AC, Vergote I, Verheijen RH, et al. Sentinel node dissection is safe in the treatment of early-stage vulvar cancer. *J Clin Oncol* 20:884–9, 2008
14. Morton DL, Thompson JF, Cochran AJ, Mozzillo N, Elashoff R, Essner R et al. Sentinel node biopsy or nodal observation in melanoma. *New Engl J Med* 355:1307-1, 2006
15. Lécuru F, Mathevet P, Querleu D, Leblanc E, Morice P, Daraï E, et al. Bilateral negative sentinel nodes accurately predict absence of lymph node metastasis in early cervical cancer: results of the SENTICOL study. *J Clin Oncol* 29(13):1686–91, 2011
16. Wang X, Fang F, Li Y. Sentinel-lymph-node procedures in early stage cervical cancer: a systematic review and meta-analysis. *Med Oncol* 32(1):385, 2015
17. Biglia N, Librino A, Ottino MC, Panuccio E, Daniele A, Chahin A. Lower limb lymphedema and neurological complications after lymphadenectomy for gynecological cancer. *Int J Gynecol Cancer* 25(3):521–5, 2015
18. Graf N, Rufibach K, Schmidt AM, Fehr M, Fink D, Baege AC. Frequency and risk factors of lower limb lymphedema following lymphadenectomy in patients with gynecological malignancies. *Eur J Gynaecol Oncol* 34(1):23–7, 2013
19. Bats A-S, Mathevet P, Buenerd A, Orliaguet I, Mery E, Zerdoud S, et al. The sentinel node technique detects unexpected drainage pathways and allows nodal ultrastaging in

- early cervical cancer: insights from the multicenter prospective SENTICOL study. *Ann Surg Oncol* 20(2):413–22, 2015
20. Cibula D, Kocian R, Plaikner A, Jarkovsky J, Klat J, Zapardiel I, et al. Sentinel lymph node mapping and intraoperative assessment in a prospective, international, multicentre, observational trial of patients with cervical cancer: The SENTIX trial, *Eur J Cancer* 137:69-80, 2020.
 21. Zikan M, Fischerova D, Pinkavova I, Slama J, Weinberger V, Dusek L, et al. A prospective study examining the incidence of asymptomatic and symptomatic lymphoceles following lymphadenectomy in patients with gynecological cancer. *Gynecol Oncol* 137(2):291–8, 2015
 22. Hareyama H, Hada K, Goto K, Watanabe S, Hakoyama M, Oku K, et al. Prevalence, classification, and risk factors for postoperative lower extremity lymphedema in women with gynecologic malignancies: a retrospective study. *Int J Gynecol Cancer* 25(4):751–7, 2015
 23. Carlson JW, Kauderer J, Hutson A, Carter J, Armer J, Lockwood S, et al. GOG 244-The lymphedema and gynecologic cancer (LEG) study: incidence and risk factors in newly diagnosed patients. *Gynecol Oncol* 156(2):467-74, 2020
 24. Ramirez PT, Frumovitz M, Pareja R, Lopez A, Vieira M, Ribeiro R et al. Minimally Invasive versus Abdominal Radical Hysterectomy for Cervical Cancer. *The New England journal of medicine* 379(20):1895-904, 2018
 25. Lecuru FR, McCormack M, Hillemanns P, et al. SENTICOL III: an international validation study of sentinel node biopsy in early cervical cancer. A GINECO, ENGOT, GCIG and multicenter study. *Int J Gynecol Cancer* 29(4):829-834, 2019

Table 1: Characteristics of patients and tumors according to study arm

	SN arm N=105	SN+PLND arm N= 101	P-value
Mean age (SD) - year	44.2 (12.0)	44.6 (11.2)	0.80
Mean BMI (SD) – kg/m²	23.6 (4.6)	23.9 (5.4)	0.92
Histotype: N (%)			0.68
squamous	68 (64.8)	73 (72.3)	
adenocarcinoma	33 (31.4)	24 (23.8)	
Adeno-squamous	4 (3.8)	4 (4)	
LVSI (+): N (%)	19 (27.9)	16 (25.4)	0.84
FIGO 2009 Stage: N (%)			0.29
IA1 LVSI+	7 (6.7)	2 (2.0)	
IA2	5 (4.8)	6 (6.0)	
IB1	90 (85.7)	91 (91.0)	
IIA	3 (2.9)	1 (1.0)	
Mean tumor diameter in mm (SD)	18.4 (9.3)	16.9 (8.7)	0.28
Presence of risk factor for lymphoedema N (%)	12 (12.1)	10 (11.2)	1.0

**SN: sentinel node,
SN+PLND: sentinel node + pelvic lymph-node dissection,
SD: standard deviation,
BMI: body mass index,
LVSI: lymph-vascular space invasion.**

Table 2: Cases of metastatic SN according to study arm

	SN arm N=105	SN+PLND arm N=101	P-value
All SN	410	360	
Metastatic N (%)	15 (3.7)	11 (3.1)	0.88
Macrometastases N (%)	5 (1.2)	3 (0.8)	0.87
Micrometastases N (%)	3 (0.7)	6 (1.7)	0.48
Isolated tumor cells N (%)	7 (1.7)	2 (0.6)	0.11
Patients	105	101	
Macrometastases N (%)	3 (2.9)	3 (3.0)	1.0
Micrometastases N (%)	3 (2.9)	4 (4.0)	0.72
Isolated tumor cells N (%)	6 (5.7)	2 (2.0)	0.28

SN: sentinel node, SN+PLND: sentinel node + pelvic lymph-node dissection.

Table 3: Six-month post-operative lymphatic morbidity according to study arm

Complications	SN arm N = 105	SN+PLND arm N = 101	P-value
All complications	33 (31.4%)	56 (55.4%)	0.004
Major complications	1 (1.2%)	6 (5.9%)	0.061
Minor complications	32 (30.4%)	50 (49.5%)	0.007

SN: sentinel node, SN+PLND: sentinel node + pelvic lymph-node dissection.

Major complications are grade 3, 4 or 5 lymphatic complications of the NCI CTCAE classification.

Minor complications are grade 1 or 2 lymphatic complications of the NCI CTCAE classification.

Table 4: Symptoms related to lymphedema at the 1, 3 and 6-months visits. Visual scale evaluation (from 0 to 10).

Time	Symptoms	SN arm		SN+PLND arm		P-value
		N	Mean VAS	N	Mean VAS	
V1 (1 month)	Heaviness, mean (SD)	73	0.90 (1.62)	72	1.58 (2.49)	0.28
V1	Pain, mean (SD)	74	0.58 (1.2)	71	1.37 (2.42)	0.16
V1	Tiredness, mean (SD)	72	0.92 (1.9)	71	1.87 (2.61)	0.03
V1	Cutaneous tension, mean (SD)	73	0.31 (1.04)	68	0.69 (1.86)	0.70
V2 (3 months)	Heaviness, mean (SD)	64	1.31 (2.14)	67	1.77 (2.42)	0.16
V2	Pain, mean (SD)	64	0.86 (1.79)	67	1.28 (2.26)	0.29
V2	Tiredness, mean (SD)	64	1.22 (2.18)	67	1.94 (2.78)	0.11
V2	Cutaneous tension, mean (SD)	62	0.60 (1.60)	67	0.75 (1.59)	0.31
V3 (6 months)	Heaviness, mean (SD)	66	1.25 (1.90)	71	1.66 (2.44)	0.53
V3	Pain, mean (SD)	67	0.84 (1.82)	71	1.11 (1.93)	0.48
V3	Tiredness, mean (SD)	67	1.67 (2.43)	70	1.29 (2.11)	0.31
V3	Cutaneous tension, mean (SD)	67	0.65 (1.71)	70	0.57 (1.46)	0.91

SN: Sentinel Node

SN+PLND: Sentinel Node + Pelvic Lymph Node Dissection

SD: standard deviation

VAS: visual analogic scale

V1: 1-month visit

V3: 3-month visit

V6: 6-month visit

Figure 1: Consort flow chart

SN: sentinel node only arm

SN + PLND: sentinel node + pelvic lymph node dissection

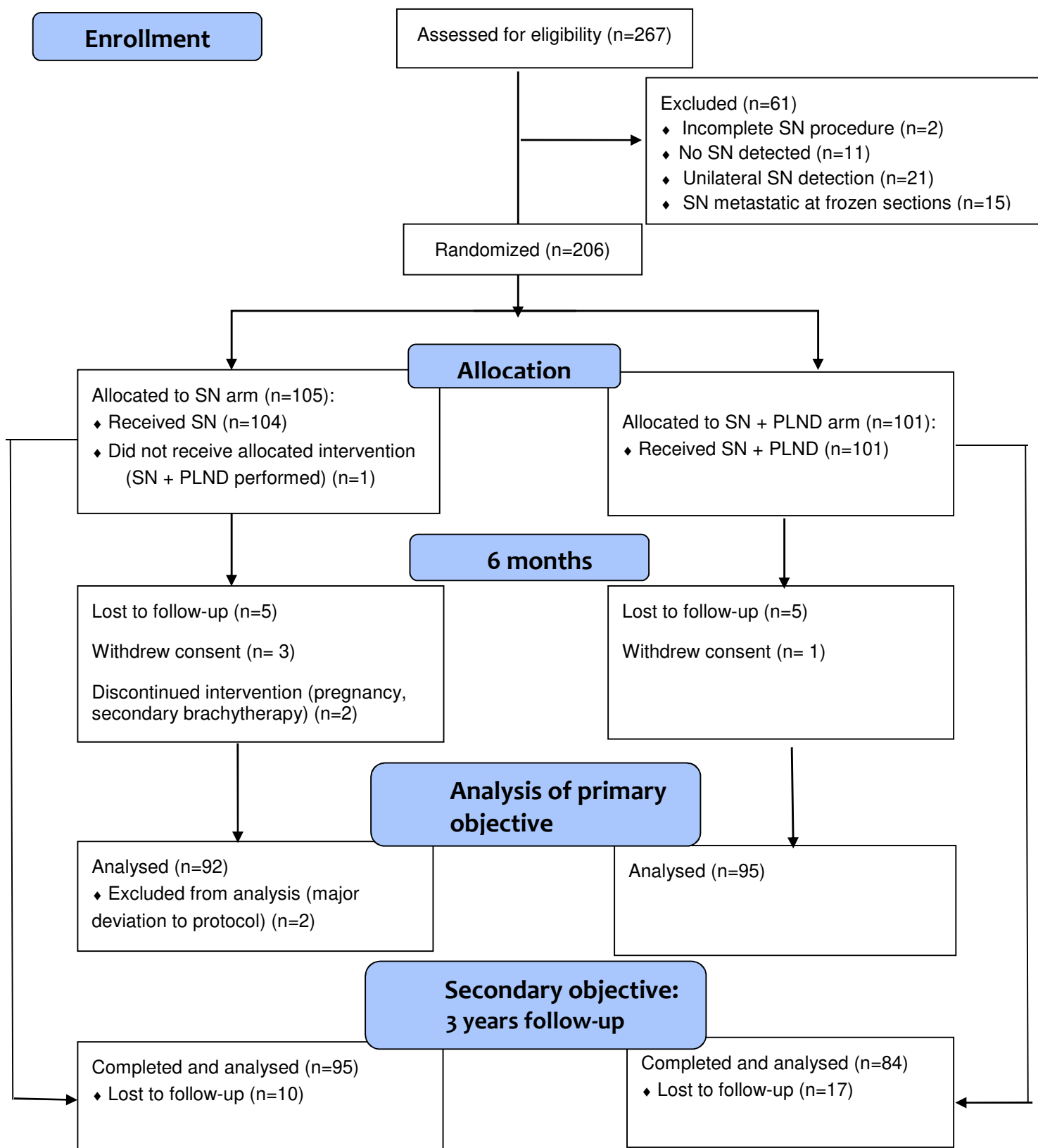
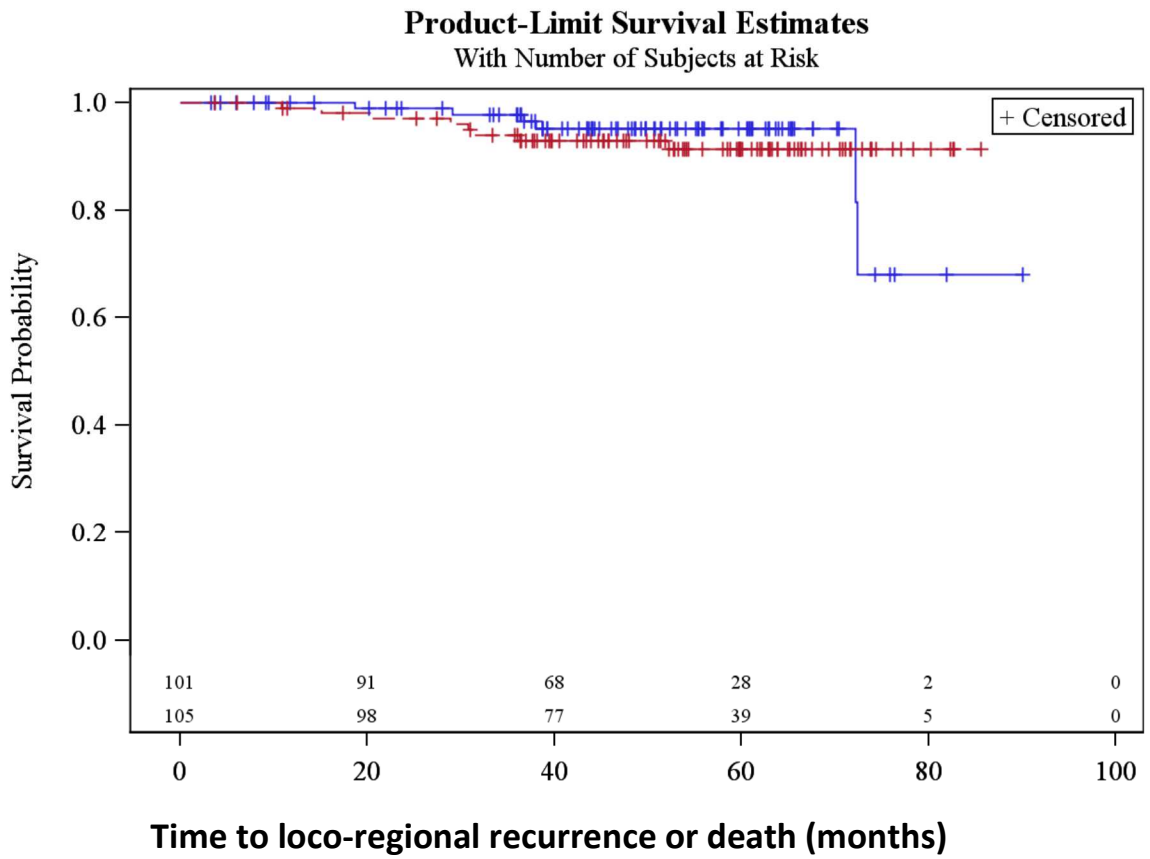



Figure 2. Recurrence-free survival



Arm: SN biopsy alone: 

SN + PLND: 