



HAL
open science

Hominoids from Berg Aukas, Middle Miocene, Namibia -Revision of dental measurements

Helke Mocke, Martin Pickford, Brigitte Senut, Dominique Gommery

► **To cite this version:**

Helke Mocke, Martin Pickford, Brigitte Senut, Dominique Gommery. Hominoids from Berg Aukas, Middle Miocene, Namibia -Revision of dental measurements. Communications of the Geological Survey of Namibia, 2023, 26, pp.34-38. hal-04461633

HAL Id: hal-04461633

<https://hal.science/hal-04461633>

Submitted on 16 Feb 2024

HAL is a multi-disciplinary open access archive for the deposit and dissemination of scientific research documents, whether they are published or not. The documents may come from teaching and research institutions in France or abroad, or from public or private research centers.

L'archive ouverte pluridisciplinaire **HAL**, est destinée au dépôt et à la diffusion de documents scientifiques de niveau recherche, publiés ou non, émanant des établissements d'enseignement et de recherche français ou étrangers, des laboratoires publics ou privés.

[Communications of the Geological Survey of Namibia 2023, 26, 34-38]

Hominoids from Berg Aukas, Middle Miocene, Namibia – Revision of dental measurements

Helke Mocke (1) , Martin Pickford (2) , Brigitte Senut (2) & Dominique Gommery (3)

1. Geological Survey of Namibia, National Earth Science Museum, 6 Aviation Road, Private Bag 13297, Windhoek, Namibia

2. Centre de Recherche en Paléontologie - Paris (CR2P) Muséum national d'Histoire naturelle, CNRS, Sorbonne Université, 8 rue Buffon, 75005, Paris, France.

3. Centre de Recherche en Paléontologie - Paris (CR2P) Muséum national d'Histoire naturelle, CNRS, Sorbonne Université, Campus Pierre et Marie Curie-SU, T.46-56, E.5, 4 Place Jussieu, 75005 Paris, France

Abstract: Revised measurements of hominoid teeth from Berg Aukas, Namibia, indicate that the two species previously reported from the site were of similar body size, raising the possibility that there might be only a single species present. However comparisons of dental morphology confirm the hypothesis of two species, *Otavipithecus namibiensis* and cf *Kenyapithecus* sp. closer in dimensions to *K. africanus* than to *K. wickeri*.

Key words: Late Middle Miocene, Hominoidea, Africa, Measurements, Dentition

INTRODUCTION

The sample of late Middle Miocene hominoids from Namibia was recently augmented by the description of several dentognathic and postcranial specimens collected at Berg Aukas during the 1960's (Mocke et al. 2022). In that study, the material was interpreted to belong to a genus close to *Kenyapithecus*, because the morphology of the cheek teeth is closer to the situation in *Kenyapithecus wickeri* Leakey, 1962, from Kenya, than it was to the type material of *Otavipithecus namibiensis* Conroy et al. 1992. Restudy of all the Berg Aukas fossils in 2022 led to the realisation that the published measurements were taken in slightly different ways from the usual method. We herein publish revised measurements of the dental remains (Table 1).

MATERIAL AND METHODS

The fossils are curated at the Earth Science Museum, Geological Survey of Namibia, Windhoek, under the register numbers GSN BA 11'21, mandible and GSN BA 12'21, upper molar. The mesio-distal length and buccolingual breadth of the fossil teeth were measured using metal sliding calipers to the nearest tenth of a mm.

RESULTS

The new measurements of all the Berg Aukas hominoid teeth indicate that the recently described material (Mocke et al. 2022) agrees in metric details with the previously described hypodigm of *Otavipithecus namibiensis* (Conroy et al. 1992) (Table 1, Fig. 6). As a result, the length/breadth ratios of the teeth are slightly different from what was previously published, and now accord more closely in length/breadth proportions to the original hypodigm of *Otavipithecus namibiensis*. However, the morphology of the teeth indicate that there are indeed two taxa of hominoids in the Berg Aukas sample, *Otavipithecus namibiensis* and a *Kenyapithecus*-like form (Figs 1-4). 35 Comparison of the upper molar from Berg Aukas (GSN

BA 12'21) with East African hominoids, reveals similarities to the species *Kenyapithecus africanus* (Le Gros Clark & Leakey, 1950) (Fig. 5).

CONCLUSION

Revised measurements and reexamination of the dental sample of hominoid fossils from Berg Aukas, Namibia (late Middle Miocene) indicate that the two species of apelike creature that have been reported from there were of similar body size, but that the differences in dental morphology indicate that they belong to distinct genera, as was concluded in previous studies.

ACKNOWLEDGEMENTS

We thank Mr Faan Van der Merwe for providing access to the fossils for detailed study. The National Commission on Research, Science and Technology authorised the Namibia Palaeontology Expedition to carry out research in the country. The NPE is a collaborative project undertaken by the Geological Survey of Namibia and the French National Museum of Natural History/Sorbonne University (CR2P). Funding was provided by the ATM project PalPrim Namibie (Paléobiodiversité des Primates du Néogène et du Quaternaire en Namibie) and by the Simone and Cimo Del Duca Foundation (Institut de France).

REFERENCES

- Conroy, G., Pickford, M., Senut, B., Van Couvering, J. & Mein, P. 1992. *Otavipithecus namibiensis*, first Miocene hominoid from Southern Africa (Berg Aukas, Namibia). *Nature*, 356, 144-148.
- Ishida, H., Kunimatsu, Y., Nakatsukasa, M. & Nakano, Y. 1999. New hominoid genus from the Middle Miocene of Nachola, Kenya. *Anthropological Science*, 19, 189-191.
- Kunimatsu, Y., Ishida, H., Nakatsukasa, M., Nakano, Y., Sawada, Y. & Nakayama, K. 2004. Maxillae and associated gnathodental specimens of *Nacholapithecus kerioi*, a large-bodied hominoid from Nachola, northern Kenya. *Journal of Human Evolution*, 46, 365-400.
- Leakey, L.S.B. 1962 (1961). A new lower Pliocene fossil primate from Kenya. *Annals and Magazine of Natural History*, 13 (4), 689-697.
- Le Gros Clark, W.E. & Leakey, L.S.B. 1950. Diagnoses of East African Miocene Hominoidea. *Proceedings of the Zoological Society of London*, 105, 260-262.
- Mocke, H., Pickford, M., Senut, B. & Gommery, D. 2022. New information about African late Middle Miocene to latest Miocene (13-5.5 Ma) Hominoidea. *Communications of the Geological Survey of Namibia*, 24, 33-66.
- Pickford, M. 1985. A new look at *Kenyapithecus* based on recent collections from Western Kenya. *Journal of Human Evolution*, 14, 113-143.

Table 1.

Measurements (in mm) of the teeth of cf *Kenyapithecus* sp. (GSN BA 11'21 and GSN BA 12'21) and *Otavipithecus namibiensis* from Berg Aukas, Namibia. (MDL – mesio-distal length, BLB – bucco-lingual breadth). In italics are the previously published measurements of the material.

Tooth	MDL	BLB	MDL/BLB	Published MDL	Published BLB	Published MDL/BLB
GSN BA 11'21 rt m/1	8.5	7.4	1.15	9	7	1.28
GSN BA 11'21 rt m/2	9.2	8.6	1.07	9	9	1.00
GSN BA 11'21 rt m/3	10.7	8.8	1.21	10	9	0.90
GSN BA 12'21 rt upper molar	8.7	10.8	0.82	9.0	11.0	0.81
Holotype <i>O. namibiensis</i> rt m/1	8.5	7.6	1.18			
Holotype <i>O. namibiensis</i> rt m/2	10.0	9.2	1.08			
Holotype <i>O. namibiensis</i> rt m/3	9.6	7.8	1.23			

Figure 1.

Stereo occlusal views of GSN BA 11'21, right mandible of cf *Kenyapithecus* sp. from the late Middle Miocene of Berg Aukas, Namibia.

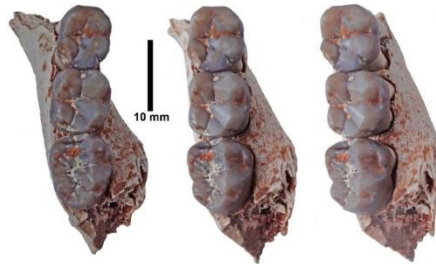


Figure 2.

Stereo buccal views of GSN BA 11'21, right mandible of cf *Kenyapithecus* sp. from the late Middle Miocene of Berg Aukas, Namibia.

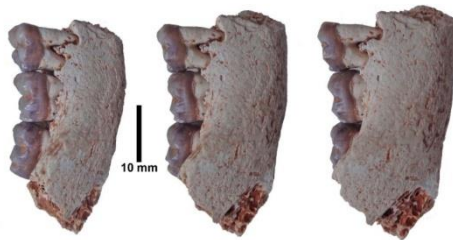


Figure 3.

Stereo lingual views of GSN BA 11'21, right mandible of cf *Kenyapithecus* sp. from the late Middle Miocene of Berg Aukas, Namibia.

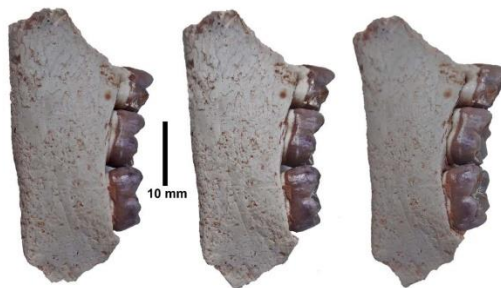


Figure 4.

GSN BA 12'21, right upper molar of cf *Kenyapithecus* sp. from the late Middle Miocene of Berg Aukas, Namibia. A) stereo occlusal views, B) buccal view, C) distal view, D) lingual view, E) mesial view, F) stereo radicular view.

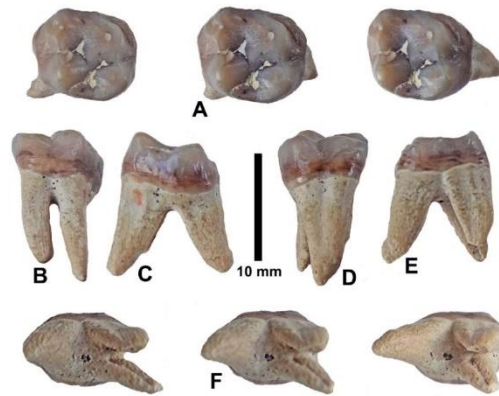


Figure 5.

NHMUK M 16649, holotype maxilla with P3/-M1/ and roots of M2/ of *Kenyapithecus africanus* from the Middle Miocene of Kenya, probably Maboko. A) stereo occlusal views, B) stereo lateral views.

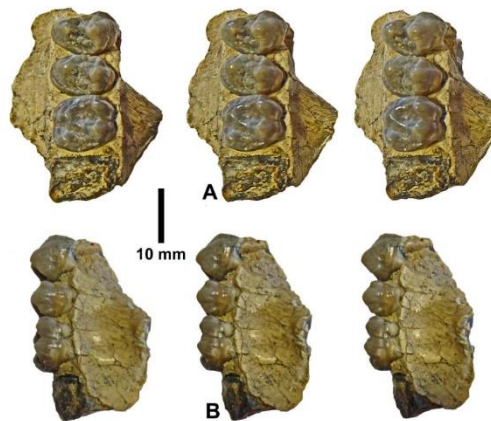


Figure 6.

Bivariate metric comparisons between lower molars of cf *Kenyapithecus* sp. (GSN BA 11'21) and the holotype of *Otavipithecus namibiensis* from Berg Aukas, Namibia, and three species of Middle Miocene hominoids from Kenya. Overall, BA 11'21 is closest to *Kenyapithecus africanus* (Le Gros Clark & Leakey, 1950) (figure modified from Mocke et al. 2022). (Measurements of East African specimens are from Pickford, 1985; Ishida et al. 1999 and Kanimatsu et al. 2004).

