



HAL
open science

Highly Effective Therapies as First-Line Treatment for Pediatric-Onset Multiple Sclerosis

Nail Benallegue, Fabien Rollot, Sandrine Wiertlewski, Romain Casey, Marc Debouverie, Anne Kerbrat, Jérôme de Seze, Jonathan Ciron, Aurelie Ruet, Pierre Labauge, et al.

► **To cite this version:**

Nail Benallegue, Fabien Rollot, Sandrine Wiertlewski, Romain Casey, Marc Debouverie, et al.. Highly Effective Therapies as First-Line Treatment for Pediatric-Onset Multiple Sclerosis. *JAMA neurology*, 2024, 81 (3), pp.273-282. 10.1001/jamaneurol.2023.5566 . hal-04458180

HAL Id: hal-04458180

<https://hal.science/hal-04458180>

Submitted on 23 May 2024

HAL is a multi-disciplinary open access archive for the deposit and dissemination of scientific research documents, whether they are published or not. The documents may come from teaching and research institutions in France or abroad, or from public or private research centers.

L'archive ouverte pluridisciplinaire **HAL**, est destinée au dépôt et à la diffusion de documents scientifiques de niveau recherche, publiés ou non, émanant des établissements d'enseignement et de recherche français ou étrangers, des laboratoires publics ou privés.



Distributed under a Creative Commons Attribution 4.0 International License

Highly Effective Therapies as First-Line Treatment for Pediatric-Onset Multiple Sclerosis

Nail Benallegue, MD, PhD; Fabien Rollot, MSc; Sandrine Wiertelowski, MD; Romain Casey, PhD; Marc Debouverie, MD, PhD; Anne Kerbrat, MD, PhD; Jérôme De Seze, MD, PhD; Jonathan Ciron, MD; Aurelie Ruet, MD, PhD; Pierre Labauge, MD, PhD; Elisabeth Maillart, MD; Helene Zephir, MD, PhD; Caroline Papeix, MD, PhD; Gilles Defer, MD; Christine Lebrun-Frenay, MD, PhD; Thibault Moreau, MD, PhD; Eric Berger, MD; Bruno Stankoff, MD, PhD; Pierre Clavelou, MD, PhD; Olivier Heinzlef, MD; Jean Pelletier, MD, PhD; Eric Thouvenot, MD, PhD; Abdullatif Al Khedr, MD; Bertrand Bourre, MD; Olivier Casez, MD; Philippe Cabre, MD, PhD; Abir Wahab, MD; Laurent Magy, MD, PhD; Sandra Vukusic, MD, PhD; David-Axel Laplaud, MD, PhD; for the OFSEP (Observatoire Français de la Sclérose en Plaques) Investigators

 Supplemental content

IMPORTANCE Moderately effective therapies (METs) have been the main treatment in pediatric-onset multiple sclerosis (POMS) for years. Despite the expanding use of highly effective therapies (HETs), treatment strategies for POMS still lack consensus.

OBJECTIVE To assess the real-world association of HET as an index treatment compared with MET with disease activity.

DESIGN, SETTING, AND PARTICIPANTS This was a retrospective cohort study conducted from January 1, 2010, to December 8, 2022, until the last recorded visit. The median follow-up was 5.8 years. A total of 36 French MS centers participated in the Observatoire Français de la Sclérose en Plaques (OFSEP) cohort. Of the total participants in OFSEP, only treatment-naïve children with relapsing-remitting POMS who received a first HET or MET before adulthood and at least 1 follow-up clinical visit were included in the study. All eligible participants were included in the study, and none declined to participate.

EXPOSURE HET or MET at treatment initiation.

MAIN OUTCOMES AND MEASURES The primary outcome was the time to first relapse after treatment. Secondary outcomes were annualized relapse rate (ARR), magnetic resonance imaging (MRI) activity, time to Expanded Disability Status Scale (EDSS) progression, tertiary education attainment, and treatment safety/tolerability. An adapted statistical method was used to model the logarithm of event rate by penalized splines of time, allowing adjustment for effects of covariates that is sensitive to nonlinearity and interactions.

RESULTS Of the 3841 children (5.2% of 74 367 total participants in OFSEP), 530 patients (mean [SD] age, 16.0 [1.8] years; 364 female [68.7%]) were included in the study. In study patients, both treatment strategies were associated with a reduced risk of first relapse within the first 2 years. HET dampened disease activity with a 54% reduction in first relapse risk (adjusted hazard ratio [HR], 0.46; 95% CI, 0.31-0.67; $P < .001$) sustained over 5 years, confirmed on MRI activity (adjusted odds ratio [OR], 0.34; 95% CI, 0.18-0.66; $P = .001$), and with a better tolerability pattern than MET. The risk of discontinuation at 2 years was 6 times higher with MET (HR, 5.97; 95% CI, 2.92-12.20). The primary reasons for treatment discontinuation were lack of efficacy and intolerance. Index treatment was not associated with EDSS progression or tertiary education attainment (adjusted OR, 0.51; 95% CI, 0.24-1.10; $P = .09$).

CONCLUSIONS AND RELEVANCE Results of this cohort study suggest that compared with MET, initial HET in POMS was associated with a reduction in the risk of first relapse with an optimal outcome within the first 2 years and was associated with a lower rate of treatment switching and a better midterm tolerance in children. These findings suggest prioritizing initial HET in POMS, although long-term safety studies are needed.

Author Affiliations: Author affiliations are listed at the end of this article.

Group Information: The OFSEP (Observatoire Français de la Sclérose en Plaques) Investigators appear in Supplement 2.

Corresponding Author: David-Axel Laplaud, MD, PhD, Department of Neurology, Hôpital Nord Laennec, Boulevard Jacques Monod, CHU Nantes, 44093 Nantes Cedex 1, France (david.laplaud@univ-nantes.fr).

JAMA Neurol. 2024;81(3):273-282. doi:10.1001/jamaneurol.2023.5566
Published online February 12, 2024.

Treatments in pediatric-onset multiple sclerosis (POMS) have largely been used off-label until the recent approval of fingolimod, dimethyl fumarate (DMF), and teriflunomide. Fingolimod has demonstrated a marked superiority over interferon beta-1a in the 2-Year, Double-Blind, Randomized, Multicenter, Active-Controlled Core Phase to Evaluate Safety & Efficacy of Daily Fingolimod vs Weekly Interferon Beta-1a in Pediatric Patients With Multiple Sclerosis and 5 Year Fingolimod Extension Phase (PARADIGMS) randomized clinical trial (RCT) in reducing both clinical and magnetic resonance imaging (MRI) activity with a relative improvement in quality of life despite a slightly higher incidence of serious adverse events (SAEs).^{1,2} Teriflunomide and DMF were recently approved by the US Food and Drug Administration and European Medicine Agency following the phase 3 Efficacy, Safety, and Pharmacokinetics of Teriflunomide in Pediatric Patients With Relapsing Forms of Multiple Sclerosis (TERIKIDS) and Phase 3 Efficacy and Safety Study of BG00012 in Pediatric Subjects With Relapsing-Remitting Multiple Sclerosis (CONNECT) RCTs.³⁻⁵ These successes paved the way for other ongoing RCTs with highly potent drugs like ocrelizumab, ofatumumab, and siponimod.^{6,7}

In the last decade, the availability of highly potent drugs led to a decrease in long-term disability accrual.⁸ Several observational studies have suggested the beneficial outcomes of newer and off-label disease-modifying therapies (DMTs) on clinical disease and radiological activity over interferons and glatiramer acetate.⁸⁻¹⁴

Early treatment after MS onset has shown benefits in reducing persistent disability in children.^{8,15} The highly inflammatory disease in children compared with adults suggests the need for prompt therapeutic control of the disease to prevent earlier disability, cognitive impairment, and brain volume loss.^{8,12,15-19} A common strategy in adult MS and POMS is to escalate treatment from moderately effective therapies (METs; ie, azathioprine, cyclophosphamide, dimethyl fumarate, glatiramer acetate, interferon beta, methotrexate, mycophenolate mofetil, teriflunomide) to highly effective therapies (HETs; ie, alemtuzumab, fingolimod, mitoxantrone, cladribine, natalizumab, ocrelizumab, ofatumumab, rituximab) in nonresponders.^{20,21} Yet, given the risk of disease breakthrough in POMS and putative long-term sequelae of first inflammatory events, assessing treatment strategy is critical.^{16,22-25} We used the national French MS cohort Observatoire Français de la Sclérose en Plaques (OFSEP) to address the effectiveness of index treatment strategy in POMS by evaluating clinical and radiological disease activity, disability, safety, and tolerance.

Methods

Study Design

This observational cohort study was approved by the Scientific Council of OFSEP and was based on data from 36 French expert centers participating in the French MS database OFSEP.²⁶ For each patient, clinical and imaging data were collected during routine follow-up visits using a dedicated

Key Points

Question What is the optimal initial treatment strategy in pediatric-onset multiple sclerosis to control disease activity?

Findings In this multicenter cohort study that included 530 children, those who started taking highly effective therapies had an associated 54% lower risk of first relapse at 5 years than those taking moderately effective therapies.

Meaning Results suggest that in pediatric-onset multiple sclerosis, initiating highly effective rather than moderately effective therapies may better control early disease activity.

software, the European Database on Multiple Sclerosis (EDMUS [Eugene Devic EDMUS Foundation]), by a neurologist with a particular interest in MS.²⁷ These data were collected retrospectively at the time of the first visit and prospectively thereafter at least once a year.

Patients enrolled in the OFSEP study²⁸ provided written informed consent for participation. The OFSEP cohort was approved by both the French data protection agency and a French ethics committee. This study followed the Strengthening the Reporting of Observational Studies in Epidemiology (STROBE) reporting guidelines.

Patients

Patients with POMS were included if they received a first treatment before the age of 18 years from January 1, 2010, to December 8, 2022, and if they were diagnosed with relapsing-remitting MS at treatment initiation (eMethods in Supplement 1).^{29,30} Eligible patients with POMS were categorized as starting with HET or MET. Information on participant race and ethnicity was not included in this study as collection of this information is banned by French law.

Procedure

The therapies studied were administered according to published protocols (eMethods in Supplement 1). A treatment was considered interrupted if not assumed for more than 90 days for fingolimod, mitoxantrone, and natalizumab; 270 days for alemtuzumab, ocrelizumab, ofatumumab, and rituximab; and 30 days for all other treatments. Baseline was defined as treatment initiation, and patients with POMS were followed up until the last clinical evaluation.

Outcomes

The primary outcome was the time to first relapse. Secondary outcomes included annualized relapse rate (ARR), relapse rate during each 3-month period, MRI activity at 2 years, time to 6-month confirmed disability progression (CDP) measured with the Expanded Disability Status Scale (EDSS), time to discontinuation of the first treatment, tertiary education attainment, and incidence rate of SAE. The CDP was defined as a 1-point increase in EDSS score (1.5 points if baseline EDSS score = 0 and 0.5 point if baseline EDSS score \geq 5.5) sustained or increased over 6 months. MRI activity was defined by new T2 lesions compared with the index brain MRI scan or gadolinium-enhancing lesions.

Statistical Analysis

We used an adapted statistical model with flexible parameters to estimate the dynamic event rate according to the time for a given patient. The cumulative proportion of patients for whom the identified event occurred is represented as an adjunctive statistical analysis. This approach facilitates data visualization, allowing the graphical representation of event dynamics for a given patient while providing smooth estimates of survival (eMethods in Supplement 1).³¹⁻³³

For each time to event outcome, this framework was used to study the impact of the 2 treatment groups (HET vs MET). Then, confounding factors at baseline causing both the outcome (P value $< .05$) and the treatment group allocation (Cohen values $d > 0.2$) were introduced in the model. The final model was selected based on the corrected Akaike information criterion (AIC), as a minimal AIC identifies the model that offers an optimal trade-off between the model's goodness of fit and its parsimony.³⁴

Regarding the secondary objectives (MRI activity and tertiary education level attainment, defined by enrollment in at least a short-cycle higher education program), a multivariate logistic regression was used by introducing associated factors causing both the outcome and the treatment group allocation and by providing the adjusted odds ratios (ORs) with their 95% CIs. For the former, only patients with POMS and at least a 2-year follow-up where MRI data available were included whereas for the latter, patients with POMS 20 years or older at the last visit were included to avoid selection bias. The estimations of relapse rate and 95% CI were estimated for the 12 months preceding HET or MET initiation and during a 24-month period postinitiation.

SAE incidence rates were defined as the total number of SAEs divided by the entire duration of the follow-up, and the 95% CIs were estimated assuming a Poisson distribution taking into account the exposure period of each treatment in patients with POMS whose treatments were switched after January 1, 2017, ie, the date of systematic collection of SAEs in the OFSEP cohort.

To evaluate the data using a more conventional statistical method, we used propensity scores by inverse probability of treatment weighting to compare the effectiveness of HET and MET on the occurrence of the first relapse after baseline in a sensitivity analysis.

The statistical analyses were conducted with an intention-to-treat approach, using SAS, version 9.4 (SAS Institute) for descriptive analyses and R software, version 4.2.2 (R Project for Statistical Computing) with the survPen package, version 1.0.0, to model event rate.³⁵ All P values were 2-sided, and a P value $< .05$ was considered statistically significant.

Results

Baseline Demographic and Clinical Characteristics

In the OFSEP database, 74 367 patients with MS were recorded in December 2022, including 3841 (5.2%) with POMS. A total of 530 patients (mean [SD] age, 16.0 [1.8] years; 364 female [68.7%]; 166 male [31.3%]) with POMS having initiated a DMT between

Table 1. Clinical and Radiological Baseline Characteristics of Eligible Children With Pediatric-Onset Multiple Sclerosis

Variable	No. (%)			Cohen d^a
	Total	HET	MET	
No.	530	108 (20.4)	422 (79.6)	
Sex				
Male	166 (31.3)	36 (33.3)	130 (30.8)	0.05
Female	364 (68.7)	72 (66.7)	292 (69.2)	
Age at baseline, y				
<10	8 (1.5)	2 (1.9)	6 (1.4)	0.26
10-11	14 (2.6)	3 (2.8)	11 (2.6)	
12-13	42 (7.9)	4 (3.7)	38 (9.0)	
14-15	137 (25.9)	24 (22.2)	113 (26.8)	
16-17	329 (62.1)	75 (69.4)	254 (60.2)	
Treatment initiation epoch				
2010-2012	162 (30.6)	14 (13.0)	148 (35.1)	0.73
2013-2015	146 (27.6)	24 (22.2)	122 (28.9)	
2016-2018	120 (22.6)	27 (25.0)	93 (22.0)	
2019-2022	102 (19.3)	43 (39.8)	59 (14.0)	
EDSS (\pm 3 mo)				
Mean (SD)	1.2 (1.4)	2.2 (1.6)	0.8 (1.2)	0.95
Median (IQR) [range]	1.0 (0-2.0) [0.0-7.0]	2.0 (1.0-3.5) [0.0-6.5]	0.0 (0.0-1.5) [0.0-7.0]	
0.0	109 (20.6)	10 (9.3)	99 (23.5)	0.64
0.5-3.5	104 (19.6)	35 (32.4)	69 (16.4)	
≥ 4.0	18 (3.4)	11 (10.2)	7 (1.7)	
Not available	299 (56.4)	52 (48.2)	247 (58.5)	
Disease duration at first treatment, y				
Mean (SD)	1.1 (1.4)	0.9 (1.6)	1.1 (1.3)	0.12
Median (IQR) [range]	0.6 (0.3-1.2) [0-13.1]	0.6 (0.3-1.0) [0-13.1]	0.6 (0.3-1.3) [0-9.9]	
No. of relapses in the year before baseline				
0	11 (2.1)	3 (2.8)	8 (1.9)	0.42
1	257 (48.5)	35 (32.4)	222 (52.6)	
2	181 (34.1)	48 (44.4)	133 (31.5)	
≥ 3	81 (15.3)	22 (20.4)	59 (14.0)	
Brain MRI (-6 mo / +3 mo)				
Yes	389 (73.4)	88 (81.5)	301 (71.3)	0.24
No	141 (26.6)	20 (18.5)	121 (28.7)	
Gadolinium-enhancing brain lesions				
Positive	232 (59.6)	59 (67.0)	173 (57.5)	0.20
Negative	132 (33.9)	24 (27.3)	108 (35.9)	
Not available	25 (6.4)	5 (5.7)	20 (6.6)	
No. of T2 brain lesions				
0	2 (0.5)	0	2 (0.7)	0.43
< 9	57 (14.7)	6 (6.8)	51 (16.9)	
≥ 9	253 (65.0)	68 (77.3)	185 (61.5)	
Not available	77 (19.8)	14 (15.9)	63 (20.9)	
Brain MRI activity in the year before baseline				
Yes	341 (64.3)	73 (67.6)	268 (63.5)	0.06
No	49 (9.2)	12 (11.1)	37 (8.8)	
Not available	140 (26.4)	23 (21.3)	117 (27.7)	

(continued)

2010 and 2022 were included in the present study (Table 1 and eTable 1 in Supplement 1). METs were the most frequent index

Table 1. Clinical and Radiological Baseline Characteristics of Eligible Children With Pediatric-Onset Multiple Sclerosis (continued)

Variable	No. (%)			Cohen d ^a
	Total	HET	MET	
Index treatment				
MET				
Azathioprine	6 (1.1)	0	6 (1.4)	
Cyclophosphamide	1 (0.2)	0	1 (0.2)	
Dimethyl fumarate	55 (10.4)	0	55 (13.0)	
Glatiramer acetate	58 (10.9)	0	58 (13.7)	
Interferon beta-1a	248 (46.8)	0	248 (58.8)	
Interferon beta-1b	11 (2.1)	0	11 (2.6)	NA
Peginterferon beta-1a	9 (1.7)	0	9 (2.1)	
Methotrexate	1 (0.2)	0	1 (0.2)	
Mycophenolate mofetil	1 (0.2)	0	1 (0.2)	
Teriflunomide	32 (6.0)	0	32 (7.6)	
HET				
Alemtuzumab	1 (0.2)	1 (0.9)	0	
Fingolimod	36 (6.8)	36 (33.3)	0	
Mitoxantrone	13 (2.4)	13 (12.0)	0	
Natalizumab	46 (8.7)	46 (42.6)	0	NA
Ocrelizumab	4 (0.8)	4 (3.7)	0	
Ofatumumab	1 (0.2)	1 (0.9)	0	
Rituximab	7 (1.3)	7 (6.5)	0	

Abbreviations: HET, highly effective therapy; MET, moderately effective therapy; NA, not applicable.

^a Standardized mean or proportion difference (Cohen *d* values): a value less than 0.2 is considered acceptable, between 0.2 and 0.5 as a moderate difference, between 0.5 and 0.8 as a significant difference, and greater than 0.8 as a major difference.

DMT used with 422 children (79.6%), whereas 108 children (20.4%) initiated HETs (Figure 1). The median (IQR) follow-up duration was 5.8 (3.0-8.7) years. Time from disease onset to baseline was similar in both groups (Table 1).

At baseline, treatment groups differed in relapse activity (≥ 3 relapses: HET, 22 of 108 [20.4%] vs MET, 59 of 422 [14.0%]) and disability (mean [SD] EDSS: HET, 2.2 [1.6] vs MET, 0.8 [1.2]; Cohen *d* > 0.20). Patients taking an HET had a higher T2 lesion burden (≥ 9 brain lesions: HET, 68 of 108 [77.3%] vs MET, 185 of 422 [61.5%]) and appeared to have a higher percentage of gadolinium enhancement (positive enhancement: HET, 59 of 108 [67.0%] vs MET, 173 of 422 [57.5%]). HET mainly comprised natalizumab (46 of 108 [42.6%]) and fingolimod (36 of 108 [33.3%]), whereas interferon (268 of 422 [63.5%]), glatiramer acetate (58 of 422 [13.7%]), and DMF (55 of 422 [13%]) accounted for most MET. The enrollment of children taking an HET increased in the most recent epochs, after 2016 (eg, 2010-2012, 14 of 108 [13.0%] vs 2019-2022, 43 of 108 [39.8%]) (Table 1).

Relapse Activity

The number of events for primary and secondary outcomes are summarized in eTable 2 in Supplement 1. For the primary analysis, the model-building strategy, including flexible effects on the treatment variable, is shown in eTable 3 and eTable 4 in Supplement 1. There was a significant proportional treatment impact, ie, the observed outcome remained similar during

follow-up. Both treatment strategies impacted the first relapse rate within the first 2 years, an outcome that was more pronounced for HET; then, the outcome was sustained (Figure 2A). Thus, from 2 years of follow-up, the probability of a first relapse was approximately 8% (8 relapses per 100 person-years) and 20% (20 relapses per 100 person-years) per year in the HET and MET groups, respectively (Figure 2A). The cumulative probability of a first relapse was 41.3% for POMS with HET, whereas it was 73.1% for those with MET at 5 years (Figure 2B). After adjustment for the treatment initiation epoch, the treatment group outcome persisted, and children beginning HET had an associated 54% lower risk of first relapse than those taking MET (adjusted hazard ratio [HR], 0.46; 95% CI, 0.31-0.67; $P < .001$) (eTables 5 and 6 in Supplement 1). The risk decreased by 7.0% by year of treatment initiation, meaning a higher efficacy of DMT in the latest epochs (adjusted HR, 0.93; 95% CI, 0.89-0.96; $P < .001$). Interestingly, neither age at DMT initiation nor age at disease onset emerged as confounders, and no interaction was observed.

HET was associated with a reduction in ARR by 91.6%, from 2.69 (95% CI, 2.31-3.12) to 0.23 (95% CI, 0.16-0.31) at 24 months. With a lesser magnitude, MET was associated with a decrease in ARR by 74.0%, from 1.93 (95% CI, 1.77-2.11) to 0.50 (95% CI, 0.45-0.55). A marked reduction in the relapse rate was observed to be associated with HET 3 to 6 months after treatment initiation (Figure 2C).

We confirmed these results using a conventional propensity score-weighted method. The confounder-adjusted (treatment initiation epoch) percentage of patients experiencing at least 1 relapse within the 5 years postinitiation was 44.8% and 72.4% in the HET and MET groups, respectively. The corresponding HR for POMS treated with HET vs MET was 0.41 (95% CI, 0.26-0.60; $P < .001$) (eTable 7 and eFigure 1 in Supplement 1).

To rule out potential treatment misclassification as HET or MET, we conducted a sensitivity analysis including only MS-approved DMT and rituximab (as anti-CD20 therapies are approved in adult MS). Findings were similar to those of the primary analysis (data not shown). Additionally, we conducted an analysis using an as-treated approach (ie, censoring data at treatment discontinuation), which demonstrated similar results to the intention-to-treat approach (adjusted HR, 0.41; 95% CI, 0.33-0.52; $P < .001$) (eFigure 2 and eTable 8 in Supplement 1).

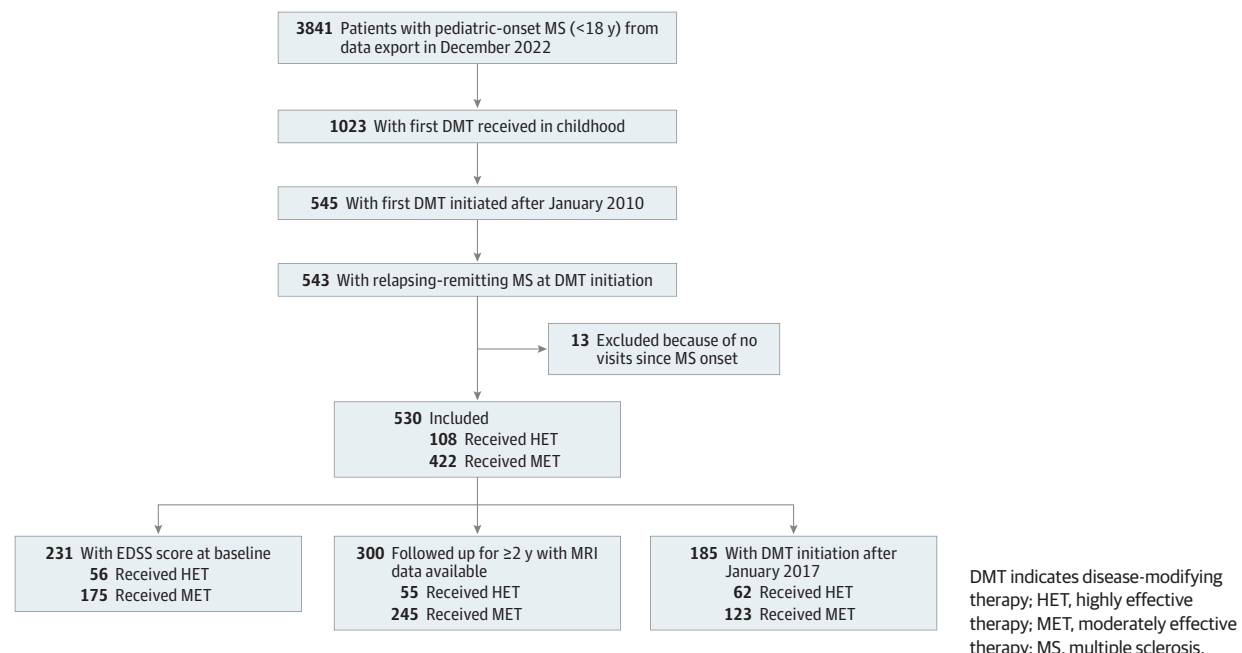
Brain MRI Disease Activity Over a 2-Year Period

After adjustment for confounding factors in a backward stepwise multivariate logistic regression, including EDSS and the number of T2 lesions at the index MRI, we found a 66% significant decrease in MRI activity at 2 years in the HET group compared with the MET group ($n = 300$; adjusted OR, 0.34; 95% CI, 0.18-0.66; $P = .001$) (eTables 9 and 10 in Supplement 1).

Disability Assessment

The treatment strategy did not alter the CDP dynamics (available baseline EDSS: HET: $n = 56$; MET: $n = 175$). The annual probability of CDP gradually increased to reach 7% at 5 years

Figure 1. Study Flow Diagram



after treatment initiation, and a cumulative probability of CDP of 16.1% was estimated regardless of group assignment (eTables 11 and 12 and eFigure 3 in Supplement 1).

Then, we analyzed the association of index treatment with tertiary education attainment (data available for 281 of 356 patients). Most children entered college of higher education or university regardless of initial treatment strategy (HET: 20 of 38 [52.6%]; MET: 160 of 243 [65.8%]) with an adjusted OR (HET vs MET) of 0.51 (95% CI, 0.24-1.10; $P = .09$) (eTable 13 in Supplement 1).

Treatment Discontinuation and Switching

Regarding treatment discontinuation, the best-fitting model shows that the dynamic of treatment discontinuation rates were different between HET and MET, despite similar rates at baseline. Discontinuation rates of the MET group remained constant (40 withdrawals per 100 person-years), whereas those of the HET group decreased the first 2 years (7 withdrawals per 100 person-years) then increased (Figure 3A). The median (IQR) time to treatment discontinuation was 1.75 (1.55-1.95) years and 4.95 (3.25-5) years in the MET and HET groups, respectively. Overall, 50.7% of children taking HET had discontinued treatment at 5 years vs 86.1% of children taking MET (Figure 3B). The HR of MET discontinuation was 5.97 (95% CI, 2.92-12.20) after 2 years of treatment compared with that of HET, peaked around 2.5 years, and then decreased (eFigure 4 in Supplement 1). No confounders were found.

To pinpoint reasons for treatment discontinuation, the reported events of inefficacy and intolerance within 5 years of follow-up (eTable 2 in Supplement 1) and at last visit (Table 2) were analyzed. Unlike MET, few events were reported in the HET group (8 for inefficacy and 5 for intolerance) and were all observed within the first 6 months of

treatment. Insufficient efficacy (HET: 13.6%; MET: 63.9%) (eFigure 5A in Supplement 1) and intolerance (HET: 6.6%; MET: 44.8%) (eFigure 5B in Supplement 1) predominated in the MET group. Most patients who initiated HET continued their treatment (64 of 108 [59.3%]), and among patients who underwent a first switch, 28 of 39 (71.8%) switched to another HET. In the MET group, only 86 of 422 children (20.4%) continued taking the treatment. One-half of the patients taking MET who switched were escalated to HET (168 of 322 [52.2%]) (Figure 3C and eTable 1 and eFigure 6 in Supplement 1). Thus, after first treatment switching, an HET strategy was considered in 92 of 108 children (85.2%) from the HET group, whereas 240 of 422 children (56.9%) from the MET group continued to take an initial MET, including horizontal switches. At the date of data extraction, 257 of 422 children (60.9%) taking an initial MET had escalated to an HET with a median (IQR) time to switch of 1.9 (0.9-3.8) years (Figure 3C and eFigure 6 in Supplement 1).

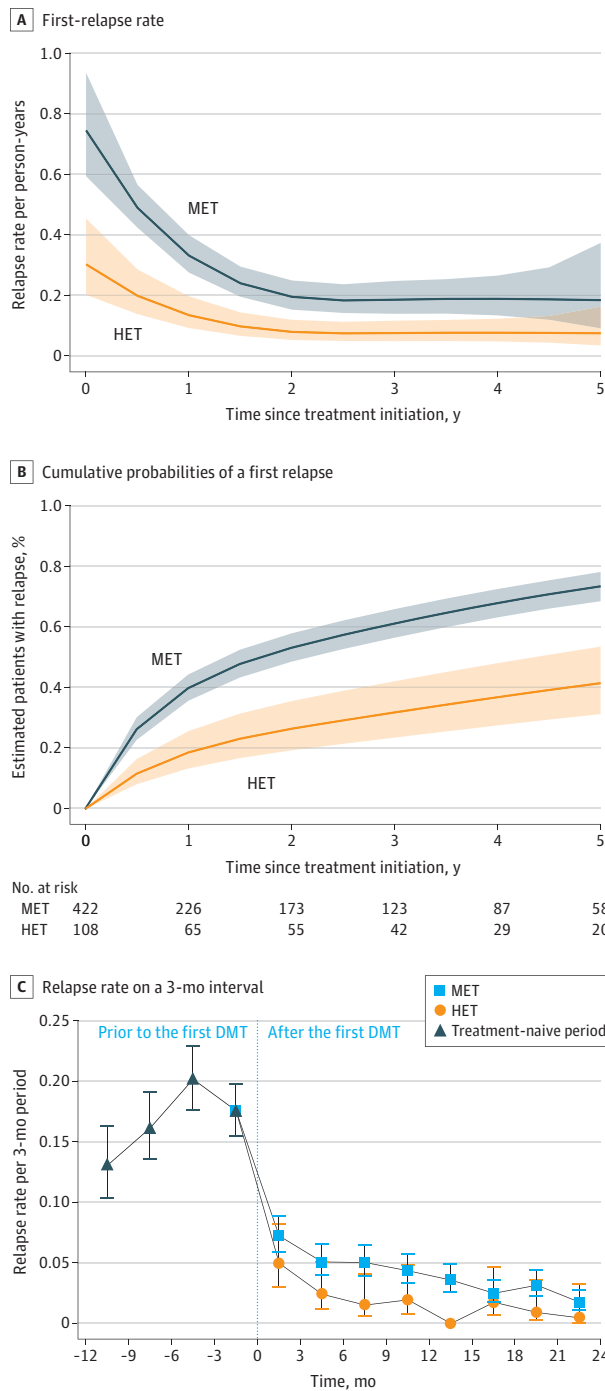
SAEs

Among the 185 children who initiated their treatment after January 1, 2017, only 7 SAEs in 5 children were observed during the exposure period (4 in the HET group, 3.41 per 100 person-years vs 3 in the MET group, 1.67 per 100 person-years; $P = .25$) (eTable 14 in Supplement 1).

Discussion

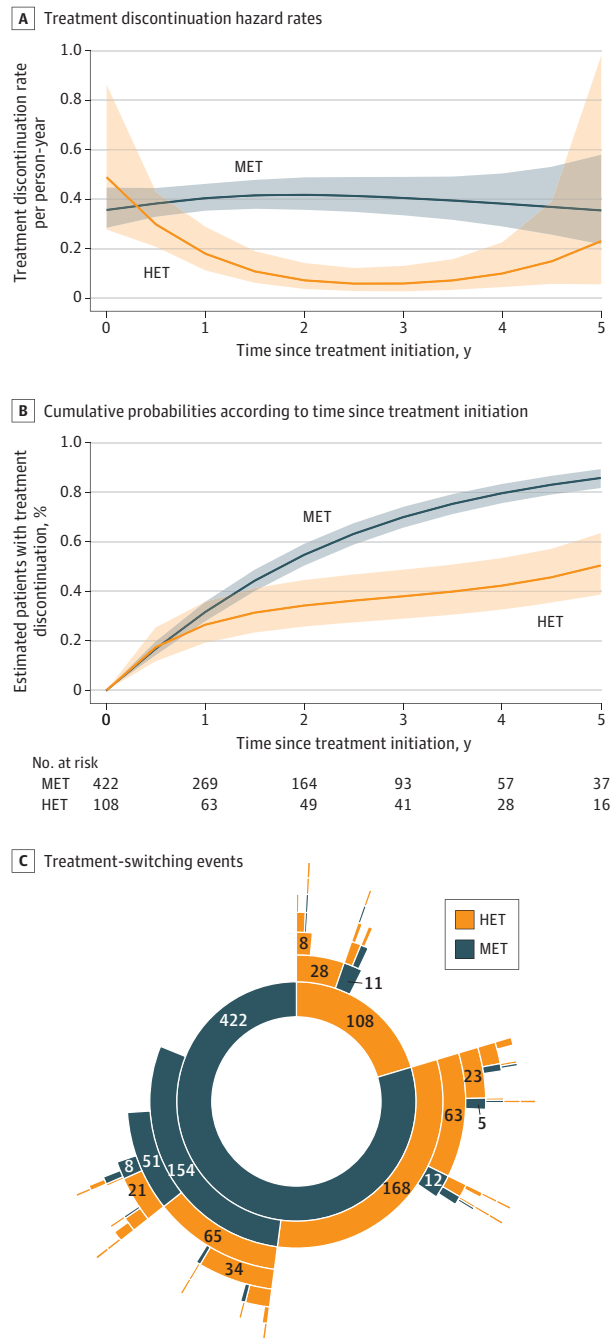
This French multicenter observational cohort study explored the effectiveness of the initial treatment strategy in POMS. Consistent with other registries, POMS prevalence was approximately 5.2% in the OFSEP cohort.^{8,18} The

Figure 2. Relapse Rate According to Index Treatment Strategy



A, First relapse rate. B, Cumulative probabilities of a first relapse occurrence after treatment initiation according to index disease-modifying therapy. C, Relapse rate on a 3-month interval basis, 12 months before and 24 months after disease-modifying therapy initiation according to first treatment strategy (95% CI). HET indicates highly effective therapy; MET, moderately effective therapy.

Figure 3. Treatment Discontinuation According to Index Treatment Strategy Group



A, Treatment discontinuation hazard rates. B, Cumulative probabilities according to time since treatment initiation. C, Treatment-switching events depicted as a sunburst chart. Each ring symbolizes a treatment line. The inner ring contains the distribution of the initial group, with subthemes radiating out (ie, an outer ring illustrates a treatment switch from its corresponding inner ring). The size of each segment reflects the number of occurrences, and hence the relative importance of switches. Embedded numbers correspond to the number of patients in each subgroup. HET indicates highly effective therapy; MET, moderately effective therapy.

analysis showed that beginning an HET in children was associated with effectively controlled relapses and radiological activity compared with an MET. Treatments were initiated at

a similar timing during the disease course, and both treatment strategies were associated with a significant reduction

in relapses in the first 2 years. Early HET initiation was associated with optimally controlled POMS inflammatory activity, but MET posed a higher associated risk of DMT interruption and switching due to persistent disease activity and intolerance. HET interruption slightly increased beyond 3 years, explained by scheduled switches (due to anti-John Cunningham virus antibody positivity with natalizumab). The analysis herein highlights the scarcity of midterm SAEs, balanced between treatment groups over a 2-year period. Long-term safety is crucial, especially in young patients exposed to treatments during critical developmental periods (eg, neurodevelopment, puberty, risk of malignancies). Moreover, the potential safety profile heterogeneity of HET should be considered in decision-making.^{36,37}

Few multicenter observational studies have compared initial DMT effectiveness in POMS. A large US study (197 patients taking newer DMTs and 544 taking injectable older DMTs) demonstrated better control of relapse and MRI activity with newer DMTs.^{10,38} However, most studies have compared injectable DMTs to newer DMTs, which combine both HET and MET, complicating preferred strategy evaluation.^{9,10,13} Similarly, the effectiveness assessment of DMT classified according to treatment efficacy in a small cohort study showed results similar to our study.³⁹

Herein, DMF was classified among MET based on the most conservative assumption because no robust RCT has yet shown that DMF is more effective than platform therapies or teriflunomide, neither in adults nor children.^{4,40,41}

Limiting long-term disability is critical, but no differences were found between strategies, possibly due to missing baseline EDSS scores and a relatively short follow-up duration, as in other studies.¹⁰ Yet, we cannot rule out that patients initially treated with MET who escalated to HET were ultimately sufficiently protected against EDSS progression at 5 years. A large Italian MS registry study highlighted long-term disability improvement in POMS in the most recent years, emphasizing increased HET use and earlier intervention as main progress in POMS management.⁸

Although personalized therapy would be a tremendous achievement in MS care, it would require proper identification of early prognostic factors, estimates of disease trajectory, and treatment-responsiveness profiling.^{12,42} In this regard, opting for an effective initial treatment strategy might limit disease breakthrough. In this cohort, inefficacy and intolerance were the main reasons for discontinuation, suggesting suboptimal strategies. As expected, disease breakthrough was observed mainly in the MET group with a rate of treatment escalation of approximately 60%, exceeding previous reports.^{9,12,43,44} Meanwhile, few patients taking HET underwent de-escalation during follow-up (<10%).

In adult MS, preferring HET as index treatment over therapeutic escalation was associated with a reduction in disease progression and long-term disability.^{25,45-47} Early treatment initiation within 2 years of disease onset can dampen disability progression also in children, highlighting an optimal time window to mitigate neurological damage.^{15,48}

Table 2. Reasons for First Treatment Discontinuation During Follow-Up

Reason	No. (%)		
	Total	HET	MET
Discontinuation	380/530 (71.7)	44/108 (40.7)	336/422 (79.6)
SAE	12 (3.2)	3 (6.8)	9 (2.7)
Inefficacy	188 (49.5)	12 (27.3)	176 (52.4)
Intolerance (general, local, and/or biological)	112 (29.5)	5 (11.4)	107 (31.8)
Pregnancy (desire for)	8 (2.1)	2 (4.5)	6 (1.8)
Scheduled stop	36 (9.5)	21 (47.7)	15 (4.5)
Patient convenience	46 (12.1)	6 (13.6)	40 (11.9)
Other	9 (2.4)	3 (6.8)	6 (1.8)
Unknown	7 (1.8)	0	7 (2.1)

Abbreviations: HET, highly effective therapy; MET, moderately effective therapy; SAE, serious adverse event.

Limitations

This study has some limitations. The main limitations include the observational nature of the study, lacking randomization. However, contrary to adult studies, such therapeutic strategy studies in children are hindered by ethical, practical, and demographic concerns; real-world observational studies are thus essential.^{24,36,37,49,50} The retrospective nature of the study, missing baseline data and heterogeneity in HET usage, were addressed by adjusting models. Similarly, the treatment switch rates observed might have evolved over time, leading to an underestimation of switching rates in older epochs. Although the classification of off-label therapies might be controversial, excluding them did not alter the primary outcome. Regarding disease breakthrough, an International Paediatric Multiple Sclerosis Study Group consensus defined treatment inefficacy. Yet, data on ineffectiveness collected in this registry were based on MS clinician judgment and not on predefined criteria.²¹ Treatment adherence was not specifically assessed herein but tolerability data were collected. Multiple confounders such as socioeconomic status and geographical origin could impact the educational course of children with POMS and partly explain the contrast between the present findings and those assessing the effects of natalizumab or fingolimod on cognition and quality of life.^{2,51} Additionally, missing demographic data including ethnicity (whose collection is banned by French law), socioeconomic status, access to an MS center, and other social determinants of health could affect the generalization of the present findings to a broader population.

Conclusions

The findings of this cohort study suggest a sustained reduction in disease activity over 5 years associated with use of an HET as the primary strategy in POMS, with an optimal impact within the first 2 years. Although long-term safety studies are crucial, the apparent safety of MET is marred by treatment discontinuation and lesser early effect on disease control. The present findings corroborate current expert opinions and suggest prioritizing initial HET in children with POMS.^{22-24,52}

ARTICLE INFORMATION

Accepted for Publication: December 7, 2023.

Published Online: February 12, 2024.
doi:10.1001/jamaneurol.2023.5566

Open Access: This is an open access article distributed under the terms of the [CC-BY License](#). © 2024 Benallegue N et al. *JAMA Neurology*.

Author Affiliations: Department of Paediatric Neurology, Universitaire Angers, CHU Angers, Angers, France (Benallegue); Nantes Université, CHU Nantes, Inserm, CIC 14131413, Center for Research in Transplantation and Translational Immunology, UMR 1064, Nantes, France (Benallegue, Wiertlewski, Laplaud); Université de Lyon, Université Claude Bernard, Lyon 1, Lyon, France (Rollot, Casey, Vukusic); Department of Neurology, Hôpital Neurologique Pierre Wertheimer, Hospices Civils de Lyon, Sclérose en Plaques, Pathologies de la Myéline et Neuro-Infammation, Bron, France (Rollot, Casey, Vukusic); Centre de Recherche en Neurosciences de Lyon, Observatoire Français de La Sclérose en Plaques, Inserm 1028 et CNRS UMR 5292, Lyon, France (Rollot, Casey, Vukusic); EUGENE DEVIC EDMUS Foundation Against Multiple Sclerosis, State-Approved Foundation, Bron, France (Rollot, Casey, Vukusic); Department of Neurology, CHU Nantes, Nantes, France (Wiertlewski, Laplaud); Department of Neurology, Centre Hospitalier Régional Et Universitaire de Nancy, Université de Lorraine, 4360 APEMAC Vandoeuvre-Lès-Nancy, EA, France (Debouverie); Rennes University, CHU Rennes, CRC-SEP Neurology Department, and EMPENN U 1228, Inserm, INRIA, CNRS, Rennes, France (Kerbrat); Department of Neurology Et Centre d'Investigation Clinique, CHU de Strasbourg, INSERM 1434, Strasbourg, France (De Seze); Department of Neurology, CRC-SEP, CHU de Toulouse, Hôpital Pierre-Paul Riquet, Toulouse, France (Ciron); Institut Toulousain Des Maladies Infectieuses Et Inflammatoires (Infinity), Inserm UMR 1291, CNRS UMR 5051, Université Toulouse III, Toulouse, France (Ciron); Department of Neurology, CHU de Bordeaux, Bordeaux, France (Ruet); Université de Bordeaux, Inserm, Neurocentre Magendie, U1215 Bordeaux, France (Ruet); CRC SEP, Department of Neurology, Montpellier University Hospital, Montpellier, France (Labauge); Department of Neurology, APHP, Hôpital Pitié-Salpêtrière, Paris, France (Maillart); Pôle Des Neurosciences Et de L'appareil Locomoteur, CRC-SEP, Hôpital Roger Salengro, Université de Lille, Inserm U1172, Lille, France (Zephir); Département de Neurology, Hôpital Fondation A.de Rothschild, Paris, France (Papeix); Department of Neurology, Centre Expert SEP, CHU de Caen, Université Normandie, Caen, France (Defer); CRC-SEP Neurologie Pasteur 2, CHU de Nice, Université Cote d'Azur, UMR2CA (URRIS), Nice, France (Lebrun-Frenay); Department of Neurology, CHU de Dijon, Dijon, France (Moreau); Department of Neurology, CHU de Besançon, Besançon, France (Berger); Department of Neurology, CHU Saint-Antoine, Paris, France (Stankoff); Department of Neurology, CHU de Clermont-Ferrand, Clermont-Ferrand, France (Clavelou); Département de Neurologie, Centre Hospitalier de Poissy, St Germain, France (Heinzlef); Aix Marseille Univ, APHM, Hôpital de la Timone, Pôle de Neurosciences Cliniques, Service de Neurologie –

MiCeME, CRMBM CEMEREM UMR7339, Marseille, France (Pelletier); Department of Neurology, CHU de Nîmes, Nîmes, France (Thouvenot); IGF, University Montpellier, CNRS, Inserm, Montpellier, France (Thouvenot); Department of Neurology, CHU d'Amiens, Amiens, France (Al Khedr); CHU Rouen, Rouen, France (Bourre); Department of Neurology, CHU de Grenoble, Grenoble, France (Casez); Department of Neurology, CHU de Fort de France, Fort de France, France (Cabre); Department of Neurology, Assistance Publique des Hôpitaux de Paris, Hôpital Henri Mondor, Université Paris Est, Créteil, France (Wahab); Department of Neurology, CHU de Limoges, Limoges, France (Magy).

Author Contributions: Mr Rollot and Dr Laplaud had full access to all of the data in the study and take responsibility for the integrity of the data and the accuracy of the data analysis. Dr Benallegue and Mr Rollot contributed equally to this work.

Concept and design: Benallegue, Rollot, Laplaud.

Acquisition, analysis, or interpretation of data:

All authors.

Drafting of the manuscript: Benallegue, Rollot, Moreau.

Critical review of the manuscript for important intellectual content: Benallegue, Rollot, Wiertlewski, Casey, Debouverie, Kerbrat, de Seze, Ciron, Ruet, Labauge, Maillart, Zéphir, Papeix, Defer, Lebrun-Frenay, Berger, Stankoff, Clavelou, Heinzlef, Pelletier, Thouvenot, Al Khedr, Bourre, Casez, Cabre, Wahab, Magy, Vukusic, Laplaud.

Statistical analysis: Rollot.

Administrative, technical, or material support: Casey, Kerbrat, Maillart, Al Khedr, Bourre, Wahab.

Supervision: Rollot, Labauge, Magy, Vukusic, Laplaud.

Conflict of Interest Disclosures: Dr Benallegue reported compensation for travel from Roche outside the submitted work. Dr Wiertlewski reported receiving personal fees from Biogen, Novartis, Alexion, Merck, Roche, and Janssen outside the submitted work. Dr de Seze reported receiving personal fees from Biogen, Alexion, Horizon, Roche, Merck, Sanofi, Novartis, Janssen, Sandoz, UCB Pharma, and LFB Pharma outside the submitted work. Dr Ciron reported receiving advisory board fees from Biogen, Novartis, Merck, Roche, Sanofi, Alexion, and Horizon Therapeutics outside the submitted work. Dr Ruet reported receiving personal fees and nonfinancial support from Biogen, Novartis, and Merck; grants from Roche and BMS; and grants and personal fees from Sanofi-Genzyme outside the submitted work. Dr Maillart reported receiving grants from Biogen and ARSEP and personal fees from Biogen, Merck, Novartis, Sanofi-Genzyme, Janssen, Roche, and Teva outside the submitted work. Dr Zéphir reported receiving advisory board, consulting, and/or personal fees from Biogen, Alexion, Horizon Therapeutics, Novartis, Merck, and Janssen and grants from Roche outside the submitted work. Dr Papeix reported receiving conference and personal fees from Alexion and Horizon outside the submitted work. Dr Defer reported receiving personal fees from Biogen, Novartis, BMS, Merck, Serono, Roche, and Genzyme outside the submitted work. Dr Moreau reported receiving travel grants and advisory board fees from Biogen, Novartis, Sanofi, and Roche outside the submitted work. Dr Berger reported receiving personal fees from Novartis, Biogen Idec, and Merck outside the

submitted work. Dr Stankoff reported receiving grants from Roche, Merck Serono, and Novartis and lecture fees from Novartis, Merck, and Janssen outside the submitted work. Dr Thouvenot reported receiving personal fees from Janssen, Roche, Sanofi, and BMS and personal fees and grants from Merck, Novartis, and Biogen outside the submitted work. Dr Casez reported receiving personal fees from Biogen, Roche, Novartis, and Merck during the conduct of the study. Dr Wahab reported receiving personal fees from Novartis, Merck, and Janssen outside the submitted work. Dr Magy reported receiving personal fees from Biogen, Roche, and Novartis outside the submitted work. Dr Vukusic reported receiving grants from Biogen, BMS, Merck, Novartis, Janssen, Roche, and Sanofi and personal fees from Biogen, BMS, Merck, Novartis, Janssen, Roche, Sanofi, and Sandoz (all to institution) outside the submitted work. Dr Laplaud reported receiving personal fees from Biogen, Alexion, Novartis, Merck, Sanofi, MSD, and Janssen and grants from Roche, Fondation EDMUS, Fondation ARSEP, and Agence Nationale de la Recherche (ANR), outside the submitted work. No other disclosures were reported.

Funding/Support: This work was supported in part by Agence Nationale de la Recherche (reference No. ANR-10-COHO-002) and Observatoire Français de la Sclérose en Plaques (OFSEP).

Role of the Funder/Sponsor: The funders had no role in the design and conduct of the study; collection, management, analysis, and interpretation of the data; preparation, review, or approval of the manuscript; and decision to submit the manuscript for publication.

Group Information: The OFSEP (Observatoire Français de la Sclérose en Plaques) Investigators appear in [Supplement 2](#).

Meeting Presentation: This work was presented as an oral communication at the MSMilan2023 9th Joint ECTRIMS-ECTRIMS meeting; October 13, 2023; Milan, Italy.

Data Sharing Statement: See [Supplement 3](#).

Additional Contributions: We thank the Eugène Devic EDMUS Foundation Against Multiple Sclerosis for its support; the patients and neurologists who participate in the OFSEP project by contributing and facilitating access to clinical data; the research assistants in all participating centers who contributed to the data collection; and Véréna Landel, PhD (DRS, Hospices Civils de Lyon, France), for her help in manuscript preparation. Beyond usual salary, no one received financial compensation for their contribution.

REFERENCES

- Chitnis T, Arnold DL, Banwell B, et al; PARADIGMS Study Group. Trial of fingolimod vs interferon beta-1a in pediatric multiple sclerosis. *N Engl J Med*. 2018;379(11):1017-1027. doi:10.1056/NEJMoa1800149
- Krupp L, Banwell B, Chitnis T, et al. Effect of fingolimod on health-related quality of life in paediatric patients with multiple sclerosis: results from the phase 3 PARADIGMS Study. *BMJ Neurol Open*. 2022;4(1):e000215. doi:10.1136/bmjno-2021-000215
- Chitnis T, Banwell B, Kappos L, et al; TERIKIDS Investigators. Safety and efficacy of teriflunomide

- in paediatric multiple sclerosis (TERIKIDS): a multicentre, double-blind, phase 3, randomised, placebo-controlled trial. *Lancet Neurol*. 2021;20(12):1001-1011. doi:10.1016/S1474-4422(21)00364-1
4. Vermersch P, Scaramozza M, Levin S, et al. Effect of dimethyl fumarate vs interferon β -1a in patients with pediatric-onset multiple sclerosis: the CONNECT randomized clinical trial. *JAMA Netw Open*. 2022;5(9):e2230439. doi:10.1001/jamanetworkopen.2022.30439
 5. Bovis F, Ponzano M, Signori A, Schiavetti I, Bruzzi P, Sormani MP. Reinterpreting clinical trials in children with multiple sclerosis using a bayesian approach. *JAMA Neurol*. 2022;79(8):821-822. doi:10.1001/jamaneurol.2022.1735
 6. Efficacy and safety of ofatumumab and siponimod compared to fingolimod in pediatric patients with multiple sclerosis (NEOS). ClinicalTrials.gov identifier: NCT04926818. Updated October 11, 2023. Accessed September 10, 2023. <https://classic.clinicaltrials.gov/ct2/show/NCT04926818>
 7. A study to evaluate safety and efficacy of ocrelizumab in comparison with fingolimod in children and adolescents with relapsing-remitting multiple sclerosis. ClinicalTrials.gov identifier: NCT05123703. Updated December 22, 2023. Accessed September 10, 2023. <https://clinicaltrials.gov/study/NCT05123703>
 8. Baroncini D, Simone M, Iaffaldano P, et al; Italian MS registry. Risk of persistent disability in patients with pediatric-onset multiple sclerosis. *JAMA Neurol*. 2021;78(6):726-735. doi:10.1001/jamaneurol.2021.1008
 9. Abdel-Mannan OA, Manchoon C, Rossor T, et al; UK-Childhood Inflammatory Disease Network. Use of disease-modifying therapies in pediatric relapsing-remitting multiple sclerosis in the United Kingdom. *Neurol Neuroimmunol Neuroinflamm*. 2021;8(4):e1008. doi:10.1212/NXI.0000000000001008
 10. Krysko KM, Graves JS, Rensel M, et al; US Network of Pediatric MS Centers. Real-world effectiveness of initial disease-modifying therapies in pediatric multiple sclerosis. *Ann Neurol*. 2020;88(1):42-55. doi:10.1002/ana.25737
 11. Ghezzi A, Moiola L, Pozzilli C, et al; MS Study Group-Italian Society of Neurology. Natalizumab in the pediatric MS population: results of the Italian registry. *BMC Neurol*. 2015;15:174. doi:10.1186/s12883-015-0433-y
 12. De Meo E, Bonacchi R, Moiola L, et al. Early predictors of 9-year disability in pediatric multiple sclerosis. *Ann Neurol*. 2021;89(5):1011-1022. doi:10.1002/ana.26052
 13. Saponaro AC, Tully T, Maillart E, Maurey H, Deiva K; KidBiosep cohort study. Treatments of paediatric multiple sclerosis: efficacy and tolerance in a longitudinal follow-up study. *Eur J Paediatr Neurol*. 2023;45:22-28. doi:10.1016/j.ejpn.2023.05.001
 14. Huppke P, Huppke B, Ellenberger D, et al. Therapy of highly active pediatric multiple sclerosis. *Mult Scler*. 2019;25(1):72-80. doi:10.1177/1352458517732843
 15. Kopp TI, Blinkenberg M, Petersen T, Sorensen PS, Magyari M. Long term effect of delayed treatment on disability in patients with paediatric onset multiple sclerosis: a prospective Danish cohort study. *Mult Scler Relat Disord*. 2020;40:101956. doi:10.1016/j.msard.2020.101956
 16. Arnold DL, Banwell B, Bar-Or A, et al; PARADIGMS Study Investigators. Effect of fingolimod on MRI outcomes in patients with paediatric-onset multiple sclerosis: results from the phase 3 PARADIGMS study. *J Neurol Neurosurg Psychiatry*. 2020;91(5):483-492. doi:10.1136/jnnp-2019-322138
 17. Amato MP, Krupp LB, Charvet LE, Penner I, Till C. Pediatric multiple sclerosis: cognition and mood. *Neurology*. 2016;87(9)(suppl 2):S82-S87.
 18. McKay KA, Hillert J, Manouchehrinia A. Long-term disability progression of pediatric-onset multiple sclerosis. *Neurology*. 2019;92(24):e2764-e2773. doi:10.1212/WNL.00000000000007647
 19. McKay KA, Manouchehrinia A, Berrigan L, Fisk JD, Olsson T, Hillert J. Long-term cognitive outcomes in patients with pediatric-onset vs adult-onset multiple sclerosis. *JAMA Neurol*. 2019;76(9):1028-1034. doi:10.1001/jamaneurol.2019.1546
 20. Henderson M, Horton DB, Bhise V, Pal G, Bushnell G, Dave CV. Initiation patterns of disease-modifying therapies for multiple sclerosis among US adults and children, 2001 through 2020. *JAMA Neurol*. 2023;80(8):860-867. doi:10.1001/jamaneurol.2023.2125
 21. Chitnis T, Ghezzi A, Bajer-Kornek B, Boyko A, Giovannoni G, Pohl D. Pediatric multiple sclerosis: escalation and emerging treatments. *Neurology*. 2016;87(9)(suppl 2):S103-S109. doi:10.1212/WNL.0000000000002884
 22. Hachonen Y, Banwell B, Ciccarelli O. What does first-line therapy mean for paediatric multiple sclerosis in the current era? *Mult Scler*. 2021;27(13):1970-1976. doi:10.1177/1352458520937644
 23. McGinley M, Rossman IT. Bringing the HEET: the argument for high-efficacy early treatment for pediatric-onset multiple sclerosis. *Neurotherapeutics*. 2017;14(4):985-998. doi:10.1007/s13311-017-0568-1
 24. Simpson A, Mowry EM, Newsome SD. Early aggressive treatment approaches for multiple sclerosis. *Curr Treat Options Neurol*. 2021;23(7):19. doi:10.1007/s11940-021-00677-1
 25. Spelman T, Magyari M, Piehl F, et al. Treatment escalation vs immediate initiation of highly effective treatment for patients with relapsing-remitting multiple sclerosis: data from 2 different national strategies. *JAMA Neurol*. 2021;78(10):1197-1204. doi:10.1001/jamaneurol.2021.2738
 26. Vukusic S, Casey R, Rollot F, et al. Observatoire Français de la Sclérose en Plaques (OFSEP): a unique multimodal nationwide MS registry in France. *Mult Scler*. 2020;26(1):118-122. doi:10.1177/1352458518815602
 27. Confavreux C, Compston DA, Hommes OR, McDonald WI, Thompson AJ. EDMUS, a European database for multiple sclerosis. *J Neurol Neurosurg Psychiatry*. 1992;55(8):671-676. doi:10.1136/jnnp.55.8.671
 28. The French Multiple Sclerosis Registry (OFSEP). ClinicalTrials.gov identifier: NCT02889965. Updated September 7, 2016. Accessed September 10, 2023. <https://www.clinicaltrials.gov/study/NCT02889965>
 29. Thompson AJ, Banwell BL, Barkhof F, et al. Diagnosis of multiple sclerosis: 2017 revisions of the McDonald criteria. *Lancet Neurol*. 2018;17(2):162-173. doi:10.1016/S1474-4422(17)30470-2
 30. Polman CH, Reingold SC, Banwell B, et al. Diagnostic criteria for multiple sclerosis: 2010 revisions to the McDonald criteria. *Ann Neurol*. 2011;69(2):292-302. doi:10.1002/ana.22366
 31. Remontet L, Uhry Z, Bossard N, et al; CENSUR Working Survival Group. Flexible and structured survival model for a simultaneous estimation of nonlinear and nonproportional effects and complex interactions between continuous variables: performance of this multidimensional penalized spline approach in net survival trend analysis. *Stat Methods Med Res*. 2019;28(8):2368-2384. doi:10.1177/0962280218779408
 32. Fauvernier M, Roche L, Uhry Z, et al. Multidimensional penalized hazard model with continuous covariates: applications for studying trends and social inequalities in cancer survival. *J R Stat Soc Ser C Appl Stat*. 2019;68(5):1233-1257. doi:10.1111/rssc.12368
 33. Rollot F, Couturier J, Casey R, et al. Comparative effectiveness of natalizumab vs anti-CD20 in highly active relapsing-remitting multiple sclerosis after fingolimod withdrawal. *Neurotherapeutics*. 2022;19(2):476-490. doi:10.1007/s13311-022-01202-1
 34. Akaike H. A new look at the statistical model identification. *IEEE Trans Automat Contr*. 1974;19(6):716-723. doi:10.1109/TAC.1974.1100705
 35. Fauvernier M, Remontet L, Uhry Z, Bossard N, Roche L. "survPen": An R package for hazard and excess hazard modelling with multidimensional penalized splines. *J Open Source Softw*. 2019;4(4):1434. doi:10.21105/joss.01434
 36. Ghezzi A, Amato MP, Edan G, et al. The introduction of new medications in pediatric multiple sclerosis: open issues and challenges. *Mult Scler*. 2021;27(3):479-482. doi:10.1177/1352458520930620
 37. Waubant E, Banwell B, Wassmer E, et al; IPMSG. Clinical trials of disease-modifying agents in pediatric MS: opportunities, challenges, and recommendations from the IPMSG. *Neurology*. 2019;92(22):e2538-e2549. doi:10.1212/WNL.00000000000007572
 38. Malani Shukla N, Casper TC, Ness J, et al; U.S. Network of Pediatric Multiple Sclerosis Centers. Demographic features and clinical course of patients with pediatric-onset multiple sclerosis on newer disease-modifying treatments. *Pediatr Neurol*. 2023;145:125-131. doi:10.1016/j.pediatrneurol.2023.04.020
 39. Moreau A, Kolitsi I, Kremer L, et al. Early use of high efficacy therapies in pediatric forms of relapsing-remitting multiple sclerosis: a real-life observational study. *Mult Scler Relat Disord*. 2023;79:104942. doi:10.1016/j.msard.2023.104942
 40. Buron MD, Chalmer TA, Sellebjerg F, et al. Comparative effectiveness of teriflunomide and dimethyl fumarate: a nationwide cohort study. *Neurology*. 2019;92(16):e1811-e1820. doi:10.1212/WNL.00000000000007314
 41. Laplaud DA, Casey R, Barbin L, et al; SFSEP and OFSEP groups. Comparative effectiveness of teriflunomide vs dimethyl fumarate in multiple sclerosis. *Neurology*. 2019;93(7):e635-e646. doi:10.1212/WNL.00000000000007938
 42. Mao-Draayer Y, Cohen JA, Bar-Or A, et al; FLUENT study investigators. Immune cell subset profiling in multiple sclerosis after fingolimod initiation and continued treatment: the FLUENT study. *Mult Scler J Exp Transl Clin*. 2022;8(3):20552173221115023. doi:10.1177/20552173221115023
 43. Baroncini D, Zaffaroni M, Moiola L, et al. Long-term follow-up of pediatric MS patients starting treatment with injectable first-line agents: a multicentre, Italian, retrospective, observational study. *Mult Scler*. 2019;25(3):399-407. doi:10.1177/1352458518754364

44. Erdal JL, Kopp TI, Blinkenberg M, Petersen T, Sørensen PS, Magyari M. Clinical characteristics and use of disease modifying therapy in the nationwide Danish cohort of paediatric onset multiple sclerosis. *Mult Scler Relat Disord*. 2020;37:101431. doi:10.1016/j.msard.2019.101431
45. Brown JW, Coles A, Horakova D, et al; MSBase Study Group. Association of initial disease-modifying therapy with later conversion to secondary progressive multiple sclerosis. *JAMA*. 2019;321(2):175-187. doi:10.1001/jama.2018.20588
46. Cobo-Calvo A, Tur C, Otero-Romero S, et al. Association of very early treatment initiation with the risk of long-term disability in patients with a first demyelinating event. *Neurology*. 2023;101(13):e1280-e1292. doi:10.1212/WNL.0000000000207664
47. He A, Merkel B, Brown JW, et al; MSBase study group. Timing of high-efficacy therapy for multiple sclerosis: a retrospective observational cohort study. *Lancet Neurol*. 2020;19(4):307-316. doi:10.1016/S1474-4422(20)30067-3
48. Iaffaldano P, Simone M, Lucisano G, et al; Italian iMedWeb Registry and the MSBase Registry. Prognostic indicators in pediatric clinically isolated syndrome. *Ann Neurol*. 2017;81(5):729-739. doi:10.1002/ana.24938
49. Ontaneda D, Tallantyre EC, Raza PC, et al. Determining the effectiveness of early intensive versus escalation approaches for the treatment of relapsing-remitting multiple sclerosis: the DELIVER-MS study protocol. *Contemp Clin Trials*. 2020;95:106009. doi:10.1016/j.cct.2020.106009
50. Trojano M, Kalincik T, Iaffaldano P, Amato MP. Interrogating large multiple sclerosis registries and databases: what information can be gained? *Curr Opin Neurol*. 2022;35(3):271-277. doi:10.1097/WCO.0000000000001057
51. Margoni M, Rinaldi F, Riccardi A, Franciotta S, Perini P, Gallo P. No evidence of disease activity including cognition (NEDA-3 plus) in naïve pediatric multiple sclerosis patients treated with natalizumab. *J Neurol*. 2020;267(1):100-105. doi:10.1007/s00415-019-09554-z
52. Duignan S, Brownlee W, Wassmer E, et al. Paediatric multiple sclerosis: a new era in diagnosis and treatment. *Dev Med Child Neurol*. 2019;61(9):1039-1049. doi:10.1111/dmcn.14212