

# MULTI-SCALE COMPONENT-TREES FOR ENHANCED REPRESENTATION IN MULTIPLEX IMMUNOHISTOCHEMISTRY IMAGING

Romain PERRIN <sup>(1)</sup>, Aurélie LEBORGNE <sup>(1)</sup>, Nicolas PASSAT <sup>(2)</sup>, Benoît NAEGEL <sup>(1)</sup>, Cédric WEMMERT <sup>(1)</sup>

<sup>(1)</sup> ICube UMR 7357, University of Strasbourg, Strasbourg, France  
<sup>(2)</sup> CRéSTIC UR 3804, University of Reims Champagne-Ardenne, Reims, France

21<sup>st</sup> International Symposium on Biomedical Imaging (ISBI 2024)  
 Megaron Athens International Conference Center (MAICC)

Université de Strasbourg

ICUBE  
 Laboratoire des sciences de l'ingénieur de l'informatique et de l'imagerie



**Context**  
 Multiplex immunohistochemistry imaging is a collection of innovative techniques allowing **simultaneous staining** with multiple biomarkers on a same tissue. Analyzing these complex images remains a challenge even for machine learning methods. It could be beneficial to use an intermediary data structure to efficiently represent these images. The Multi-Scale Component-Tree (MSCT) is a **hierarchical morphological data structure** allowing for an **efficient storage** of images across multiple scales. We illustrate the possibilities offered by this new structure on glioblastoma images, taking inspiration from the way pathologists manually process such data.

## Multiplexed images

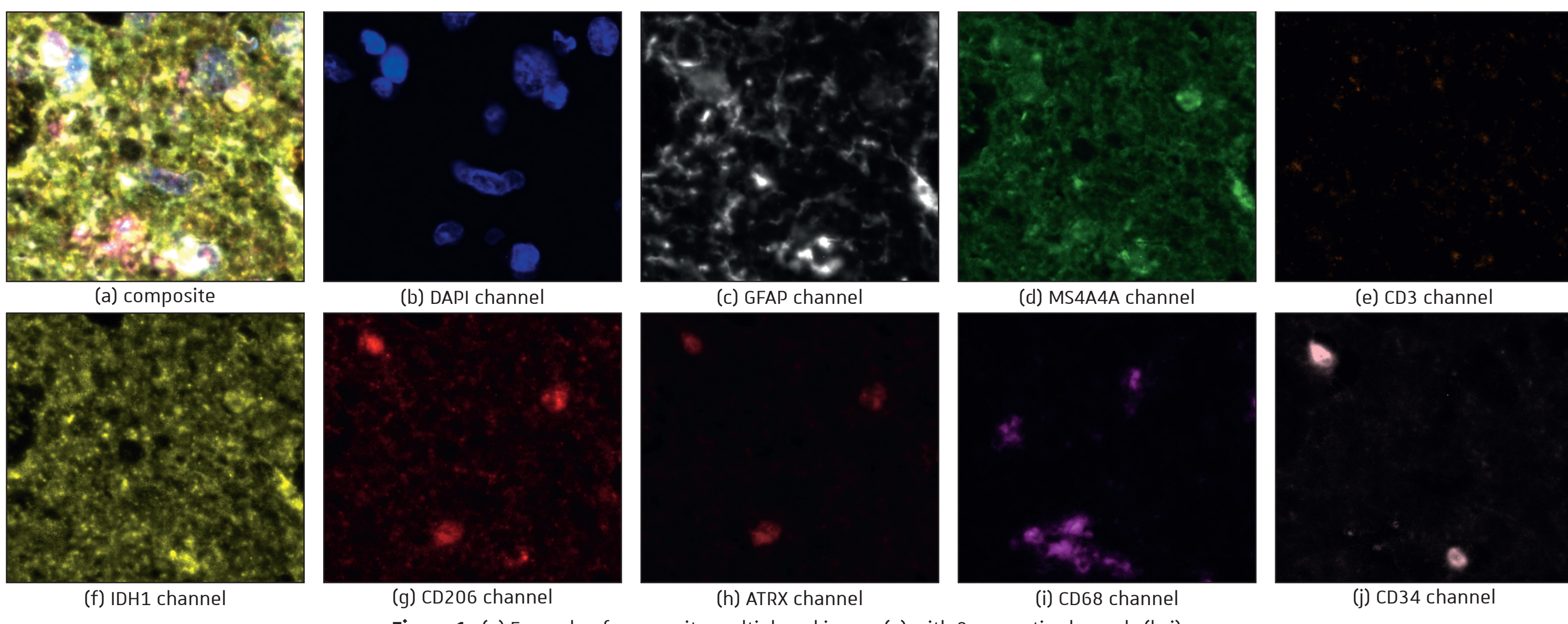


Figure 1: (a) Example of composite multiplexed image (a) with 9 semantic channels (b-j).

Images used in this paper come from a collaborative project around **glioblastoma**, a malignant cerebral tumor with poor prognosis, with neuropathologists of the Hannover Medical School (Germany). 62 images from 22 patients have been collected (3 μm tissue sections, x20 magnification 0.49 μm/pixel resolution). Regions ranging from the tumor center up to the same tissue have been manually chosen and **multispectrally stained** with a resolution of 0.25 μm/pixel (Figure 1).

## Component-tree

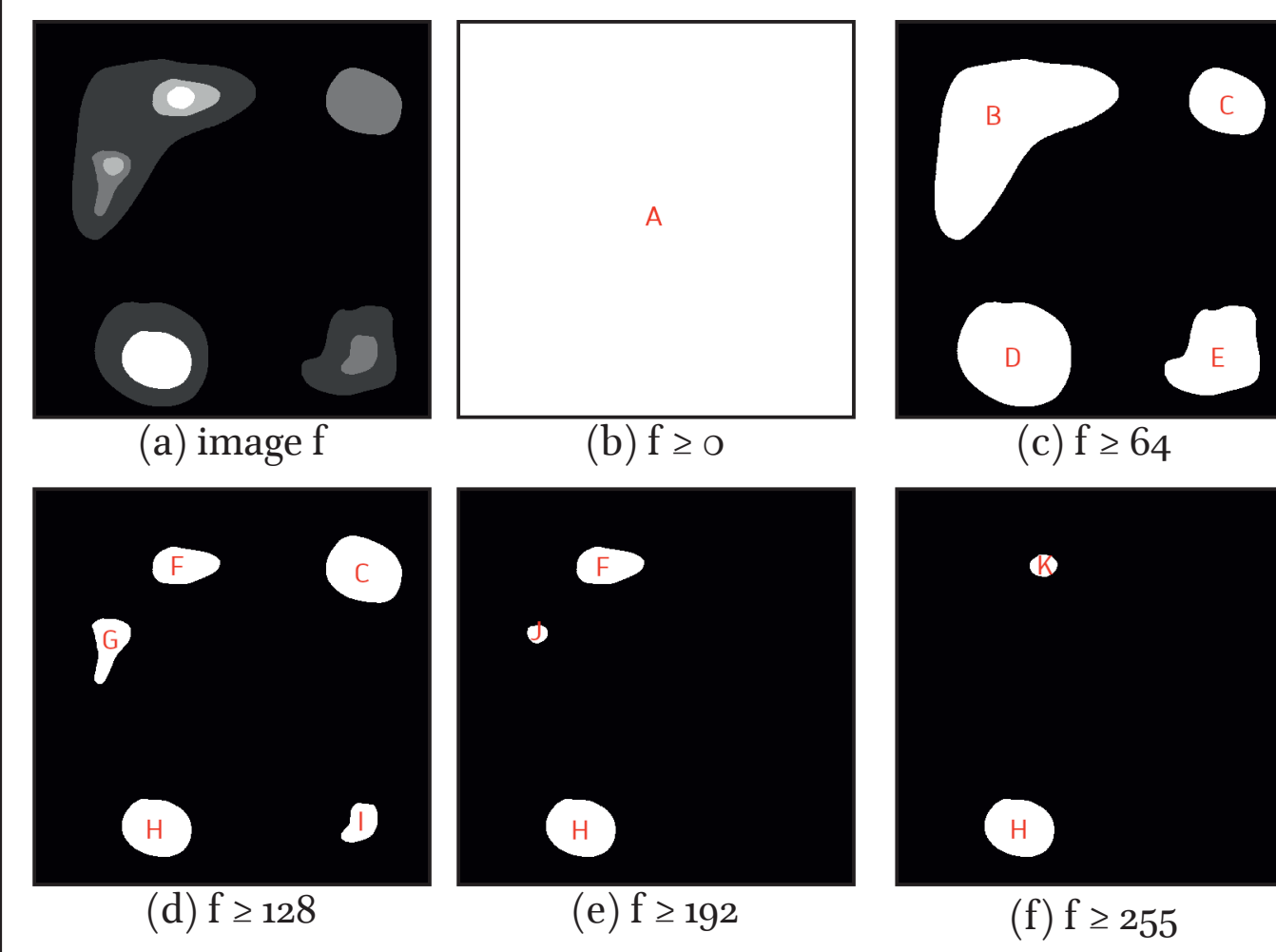


Figure 2: Connected components (b-f) at different thresholds of an image (a).

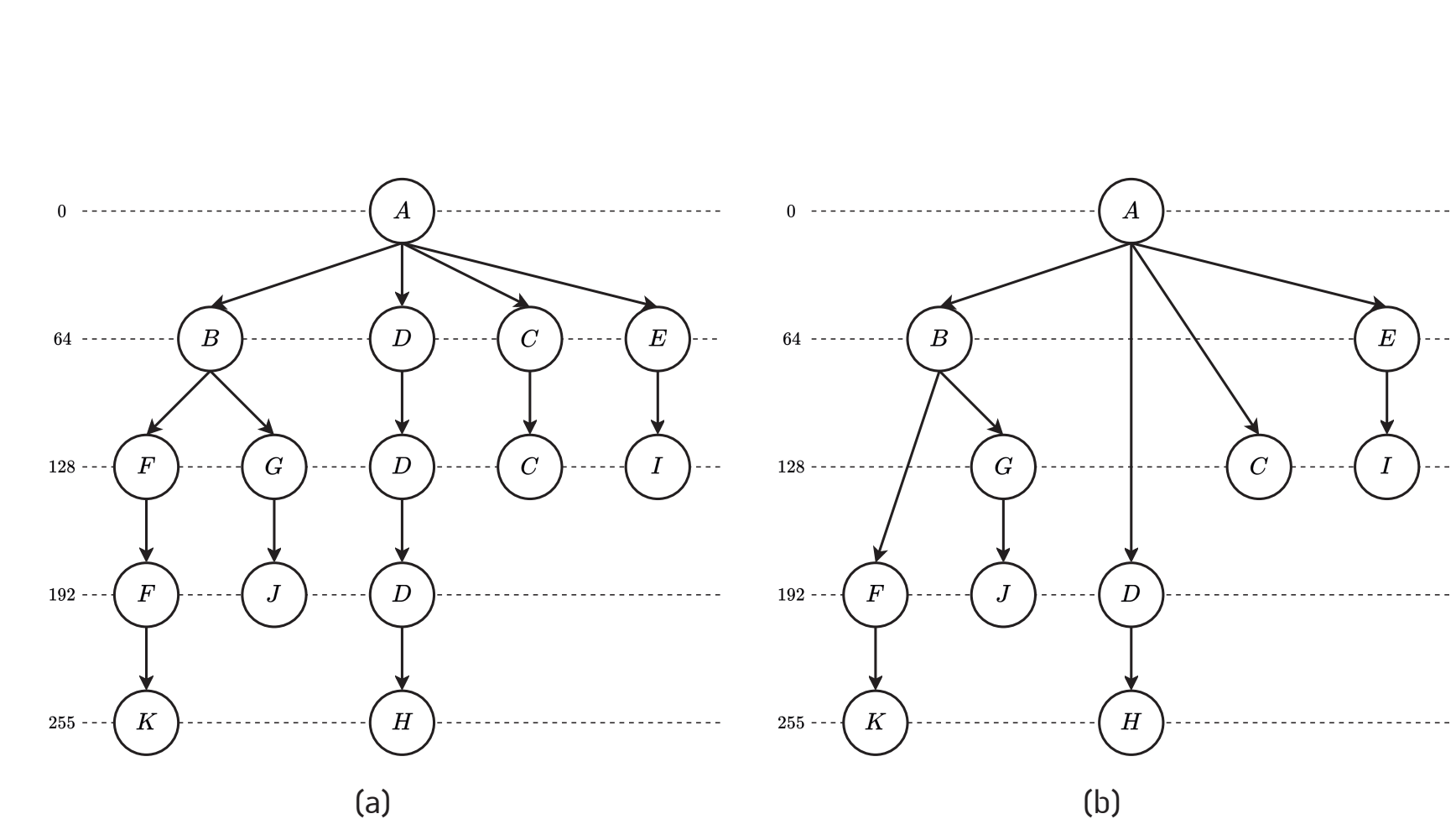


Figure 3: Example of component-trees representing the image f (Figure 2.a).

The **component-tree** (or **max-tree**) [1] is a **hierarchical morphological graph-based model** offering an efficient encoding of images for a low algorithmic computation cost [2]. A component-tree encodes the **inclusion relationships** between **connected components** obtained from successive thresholdings (Figure 2.b-f) of a grayscale image. The tree root is the largest connected component containing the entire image (A) and its leaves are the connected components whose gray-level values correspond to the local maxima of the image (C, H, I, J, K). The resulting graph is a tree called the component-tree (Figure 2).

## Multi-Scale Component-Tree (MSCT)

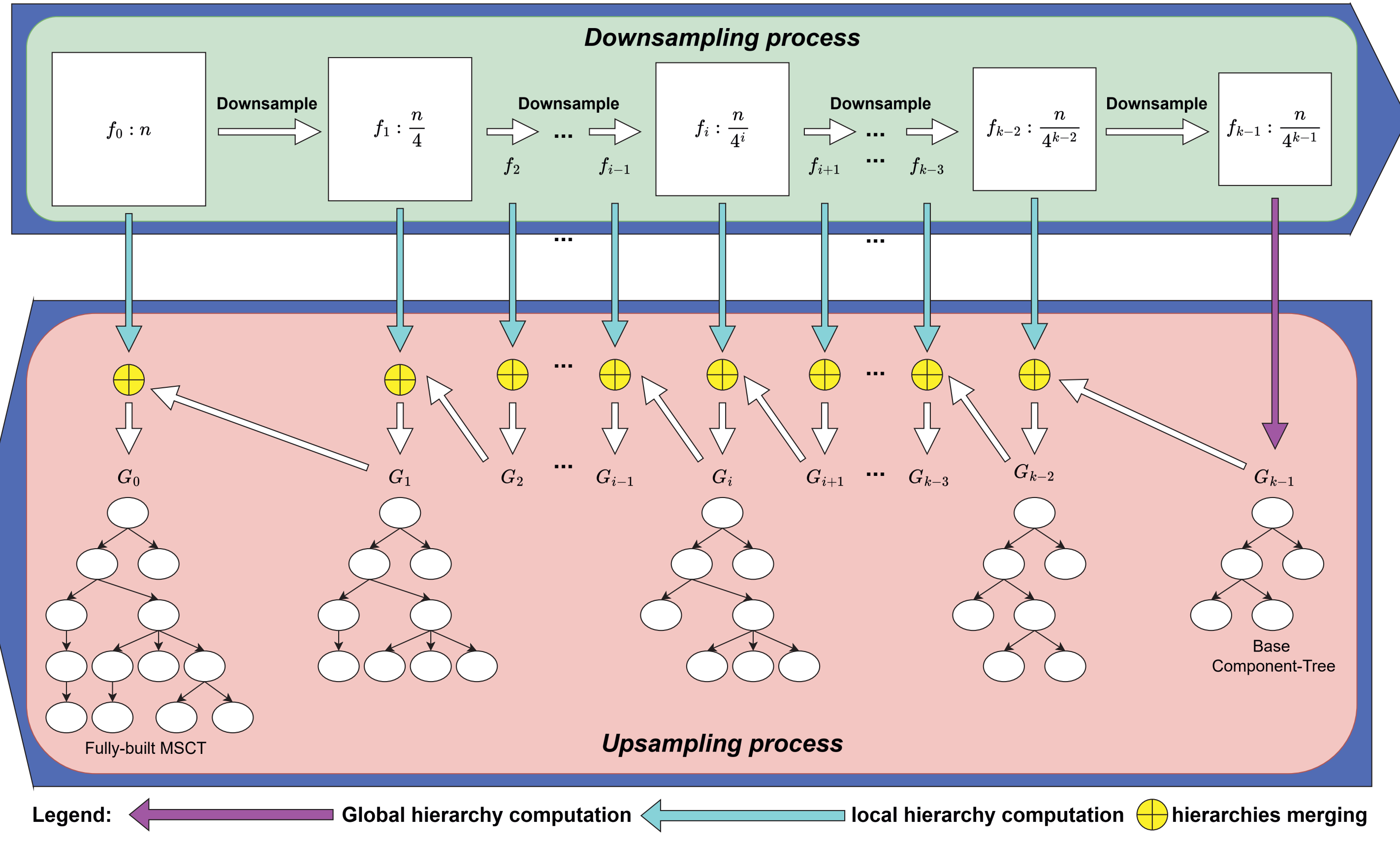


Figure 4: Construction principle of a Multi-Scale Component-Tree involving two steps (downsampling then upsampling) [5].

75	100	150	150	75	75
200	125	250	150	75	75
200	125	75	75	50	100
150	125	75	75	90	100

200	250	75
200	75	100

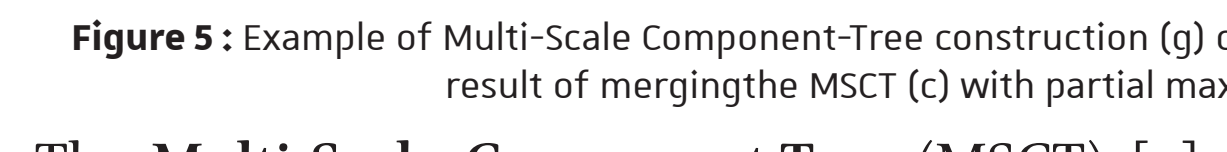


Figure 5: Example of Multi-Scale Component-Tree construction (g) on a simple image using two scales (a-b). (g) is the result of merging the MSCT (c) with partial max-trees at higher scale (d-e).

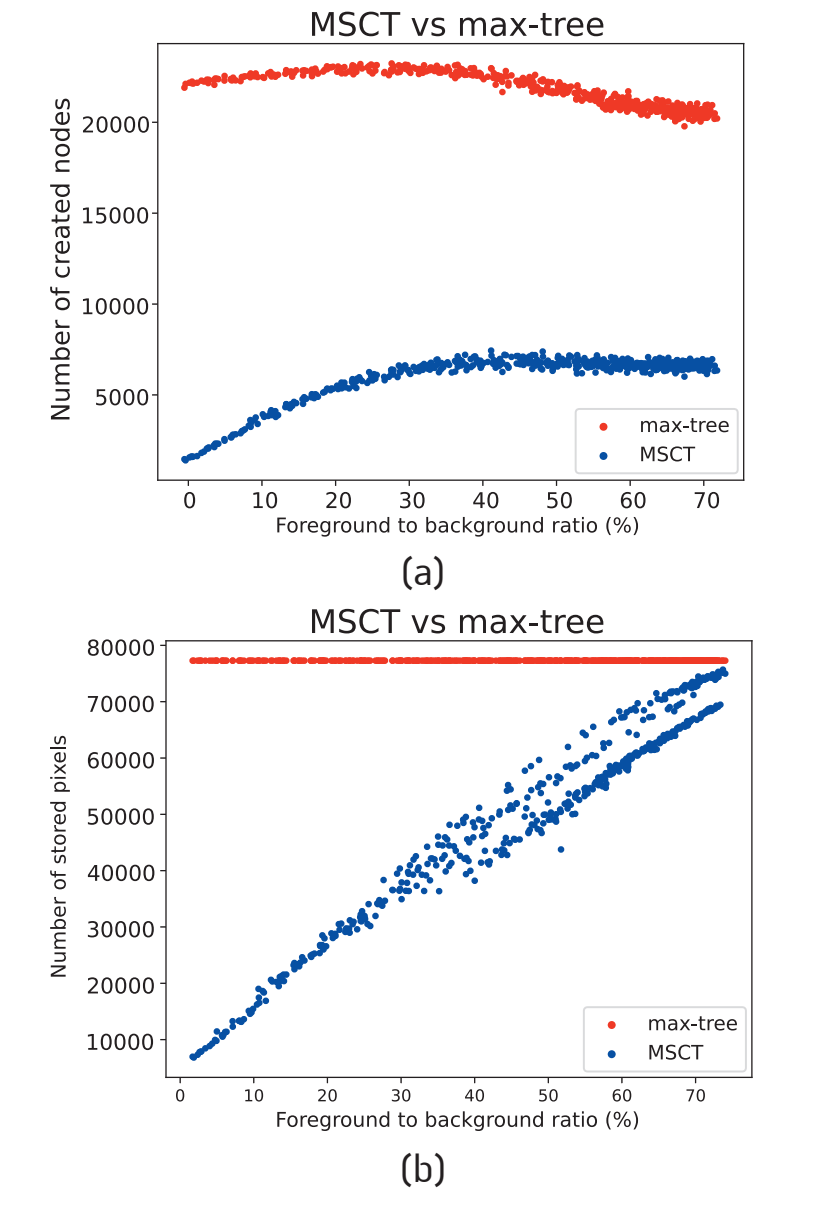


Figure 6: Storage performances.

The **Multi-Scale Component-Tree (MSCT)** [5] is a multi-scale extension of the concept of component-tree [1] where nodes may contain flat zones composed of pixels at multiple scales. The MSCT is built from a set of **downsampled images**. A first component-tree is computed on the smallest downsampled image. Iteratively, nodes of the tree are selected according to a criterion based on the **Maximally Stable Extremal Regions (MSER)** [3]. Partial component-trees are then computed on the regions of these selected nodes **projected on a higher scale image**, then merged on the MSCT, replacing the old nodes (Figure 5). This process is repeated  $k-1$  times until the original image scale is reached (Figure 4). Thanks to its multi-scale capabilities, the MSCT is able to generate a significantly lower amount of nodes compared to a regular component-tree (Figure 6.a) and produces an **efficient image representation and storage** of its pixels (Figure 6.b).

## Feature vectors

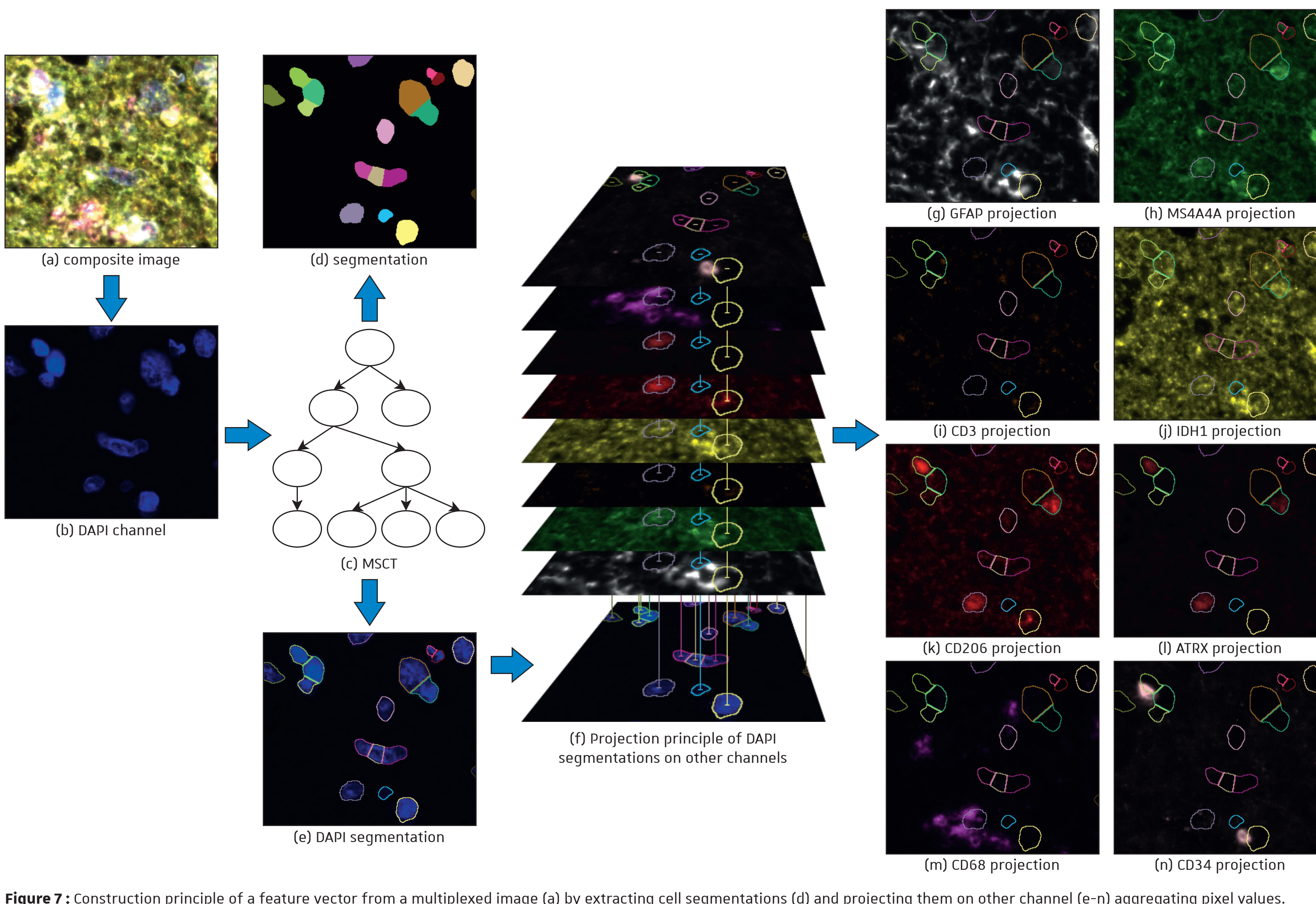


Figure 7: Construction principle of a feature vector from a multiplexed image (a) by extracting cell segmentations (d) and projecting them on other channel (e-n) aggregating pixel values.

One MSCT is built for each multiplexed image (Figure 7.a-c). The connected components containing nuclei are extracted from the tree by **filtering its nodes** (Figure 7.d-e). The resulting segmented objects form **masks** that are **projected** on the remaining semantic channels (Figure 7.f). For each connected component  $n_p$  on each channel  $f$  other than the DAPI channel ( $p$ ), the values of pixels  $f(p)$  are summed. The final feature vector  $c_i$  of an underlying object  $n_i$  is composed of the  $k-1$  sums of physical measures associated with biomarkers from channels 1 to  $k-1$  inside its segmented mask (Figure 7.g-n). Formally,  $c_i = \sum_{p \in n_i} \sum_{j=1}^{k-1} f_j(p)$ .

## Results

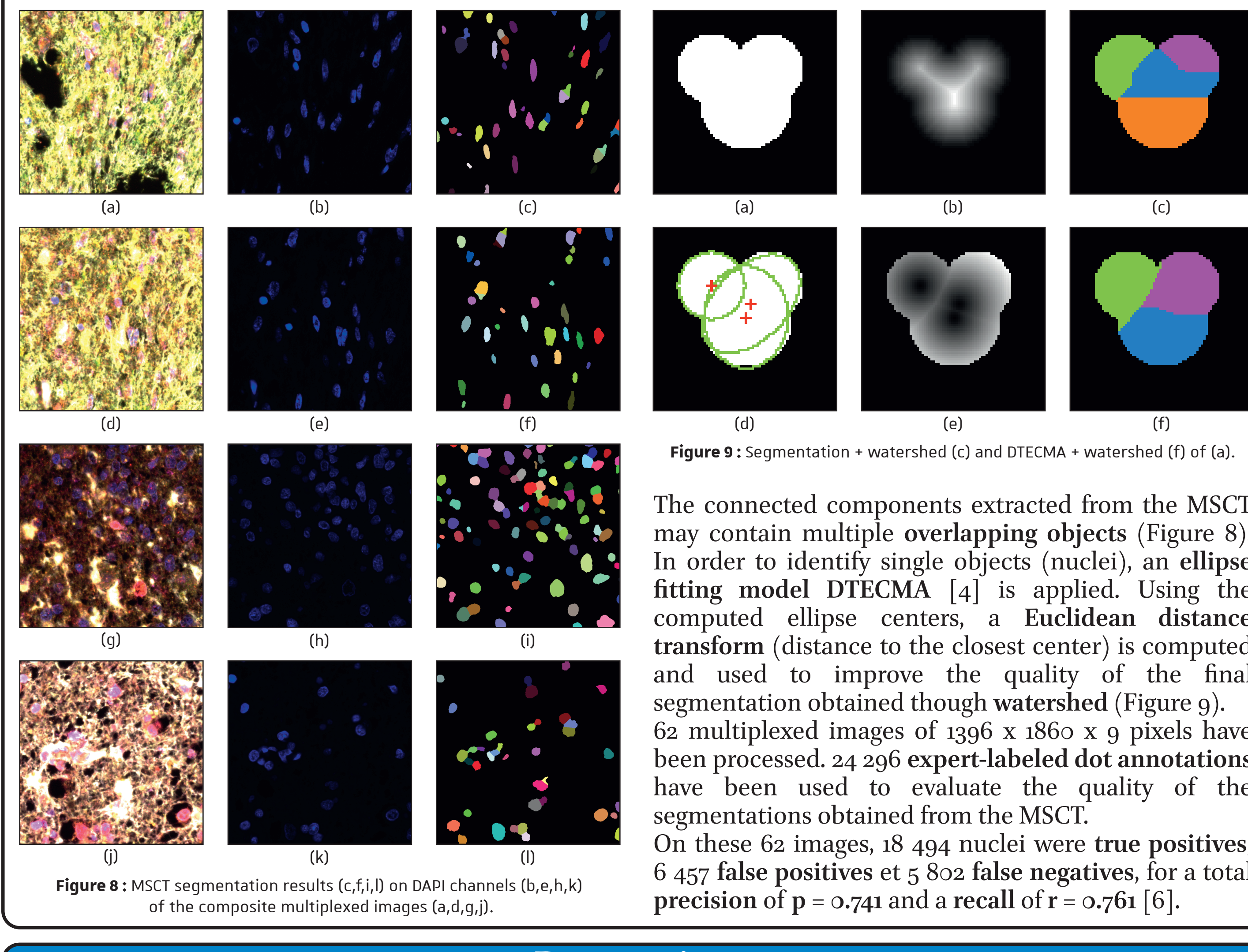


Figure 9: Segmentation + watershed (c) and DTECMA + watershed (f) of (a).

The connected components extracted from the MSCT may contain multiple **overlapping objects** (Figure 8). In order to identify single objects (nuclei), an **ellipse fitting model DTECMA** [4] is applied. Using the computed ellipse centers, a **Euclidean distance transform** (distance to the closest center) is computed and used to improve the quality of the final segmentation obtained through **watershed** (Figure 9). 62 multiplexed images of 1396 x 1860 x 9 pixels have been processed. 24 296 **expert-labeled dot annotations** have been used to evaluate the quality of the segmentations obtained from the MSCT. On these 62 images, 18 494 nuclei were **true positives**, 6 457 **false positives** et 5 802 **false negatives**, for a total **precision of  $p = 0.741$**  and a **recall of  $r = 0.761$**  [6].

## Perspectives

The feature vectors computed from the MSCT can be used for **unsupervised classification tasks**. A multiplexed image with  $k$  channels produces a feature vector of  $k-1$  dimensions. A **PCA reduction** step may be applied to project these vectors in 2D. A threshold may then be chosen to create a **binary classifier** with two classes : immune cells and tumor cells (Figure 10). The expressive power of these specific vectors was insufficient to create a complete classifier with all sub-types of cells (lymphocytes, macrophages...). Complementary attributes may be introduced to augment the expressive power of these vectors (compactness, circularity, optical density...).

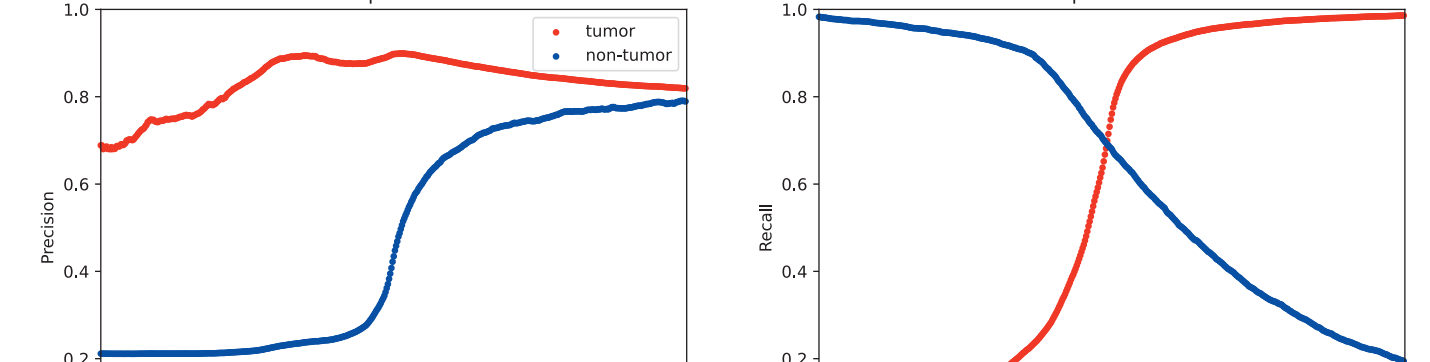


Figure 10: Precision (a) and recall (b) depending on the chosen PCA threshold.

## References

[1] P. Salembier, A. Oliveras, L. Garrido, Anti-extensive connected operators for image and sequence processing, IEEE Transactions on Image Processing, vol. 7, pp. 555-570, 1998.  
 [2] E. Carlinet, T. Géraud, A comparative review of component tree computation algorithms, IEEE Transactions on Image Processing, vol. 23, pp. 9859-9865, 2014.  
 [3] J. Matas, O. Chum, M. Urban, T. Fajda, Robust wide-baseline stereo from maximally stable extremal regions, Image and Vision Computing, vol. 22, pp. 756-767, 2004.  
 [4] T. Zou, T. Pan, M. Taylor, H. Stern, Recognition of overlapping elliptical objects in a binary image, Pattern Analysis and Applications, vol. 24, pp. 1293-1296, 2012.  
 [5] R. Perrin, A. Leborgne, N. Passat, B. Naegel, C. Wemmert, Multi-Scale Component-Trees: An Hierarchical Representation of Sparse Objects, IAPR Third International Conference on Discrete Geometry and Mathematical Morphology (DGMM), Florence, Italy, april 2024.  
 [6] R. Perrin, A. Leborgne, N. Passat, B. Naegel, C. Wemmert, Multi-Scale Component Trees for Enhanced Representation in Multiplex Immunohistochemistry Imaging, IEEE International Symposium on Biomedical Imaging (ISBI), Athens, Greece, may 2024.