



**HAL**  
open science

## Optimization of modularity during development to simplify walking control across multiple steps

Elodie Hinnekens, Bastien Berret, Estelle Morard, Manh-Cuong Do, Marianne Barbu-Roth, Caroline Teulier

► **To cite this version:**

Elodie Hinnekens, Bastien Berret, Estelle Morard, Manh-Cuong Do, Marianne Barbu-Roth, et al.. Optimization of modularity during development to simplify walking control across multiple steps. *Frontiers in Neural Circuits*, 2024, 17, 10.3389/fncir.2023.1340298 . hal-04444925

**HAL Id: hal-04444925**

**<https://hal.science/hal-04444925>**

Submitted on 8 Feb 2024

**HAL** is a multi-disciplinary open access archive for the deposit and dissemination of scientific research documents, whether they are published or not. The documents may come from teaching and research institutions in France or abroad, or from public or private research centers.

L'archive ouverte pluridisciplinaire **HAL**, est destinée au dépôt et à la diffusion de documents scientifiques de niveau recherche, publiés ou non, émanant des établissements d'enseignement et de recherche français ou étrangers, des laboratoires publics ou privés.



## OPEN ACCESS

## EDITED BY

Elias Manjarrez,  
Benemérita Universidad Autónoma de Puebla,  
Mexico

## REVIEWED BY

Yury Ivanenko,  
Santa Lucia Foundation (IRCCS), Italy  
Carlos Alberto Cuellar,  
Universidad Anáhuac México, Mexico

## \*CORRESPONDENCE

Elodie Hinnekens  
✉ elodie.hinnekens@gmail.com

RECEIVED 17 November 2023

ACCEPTED 14 December 2023

PUBLISHED 26 January 2024

## CITATION

Hinnekens E, Berret B, Morard E, Do M-C,  
Barbu-Roth M and Teulier C (2024)  
Optimization of modularity during  
development to simplify walking control across  
multiple steps.  
*Front. Neural Circuits* 17:1340298.  
doi: 10.3389/fncir.2023.1340298

## COPYRIGHT

© 2024 Hinnekens, Berret, Morard, Do, Barbu-Roth and Teulier. This is an open-access article distributed under the terms of the [Creative Commons Attribution License \(CC BY\)](https://creativecommons.org/licenses/by/4.0/). The use, distribution or reproduction in other forums is permitted, provided the original author(s) and the copyright owner(s) are credited and that the original publication in this journal is cited, in accordance with accepted academic practice. No use, distribution or reproduction is permitted which does not comply with these terms.

# Optimization of modularity during development to simplify walking control across multiple steps

Elodie Hinnekens<sup>1,2\*</sup>, Bastien Berret<sup>1,2</sup>, Estelle Morard<sup>1,2</sup>,  
Manh-Cuong Do<sup>1,2</sup>, Marianne Barbu-Roth<sup>3</sup> and Caroline Teulier<sup>1,2</sup>

<sup>1</sup>Université Paris-Saclay, CIAMS, Orsay, France, <sup>2</sup>Université Paris-Saclay, CIAMS, Orléans, France,

<sup>3</sup>Université Paris Cité, CNRS, Integrative Neuroscience and Cognition Center, Paris, France

**Introduction:** Walking in adults relies on a small number of modules, reducing the number of degrees of freedom that needs to be regulated by the central nervous system (CNS). While walking in toddlers seems to also involve a small number of modules when considering averaged or single-step data, toddlers produce a high amount of variability across strides, and the extent to which this variability interacts with modularity remains unclear.

**Methods:** Electromyographic activity from 10 bilateral lower limb muscles was recorded in both adults ( $n = 12$ ) and toddlers ( $n = 12$ ) over 8 gait cycles. Toddlers were recorded while walking independently and while being supported by an adult. This condition was implemented to assess if motor variability persisted with reduced balance constraints, suggesting a potential central origin rather than reliance on peripheral regulations. We used non-negative matrix factorization to model the underlying modular command with the Space-by-Time Decomposition method, with or without averaging data, and compared the modular organization of toddlers and adults during multiple walking strides.

**Results:** Toddlers were more variable in both conditions (i.e. independent walking and supported by an adult) and required significantly more modules to account for their greater stride-by-stride variability. Activations of these modules varied more across strides and were less parsimonious compared to adults, even with diminished balance constraints.

**Discussion:** The findings suggest that modular control of locomotion evolves between toddlerhood and adulthood as the organism develops and practices. Adults seem to be able to generate several strides of walking with less modules than toddlers. The persistence of variability in toddlers when balance constraints were lowered suggests a link with the ability to explore rather than with corrective mechanisms. In conclusion, the capacity of new walkers to flexibly activate their motor command suggests a broader range of possible actions, though distinguishing between modular and non-modular inputs remains challenging.

## KEYWORDS

development, walking, muscle synergies, modularity, toddlers, variability

## Introduction

Walking is easily performed by adult organisms despite the abundance of degrees of freedom (DOFs) that the central nervous system (CNS) has to deal with (Bernstein, 1967). However, complex motor behaviors such as walking are believed to be generated by the activation of a small number of “modules” stored in the CNS (Bizzi et al., 1991; Mussa-Ivaldi et al., 1994; d’Avella et al., 2003). A module, also called building block, motor primitive, or muscle synergy, is a neural structure in charge of producing a specific muscle pattern when activated by higher

centers (Bizzi et al., 2008). As such, modularity is believed to simplify the organization of behavior by reducing the effective number of DOFs controlled by the CNS (Bizzi and Cheung, 2013). While such neural structures were identified in animals (Bizzi et al., 1991; Hart and Giszter, 2010; Overduin et al., 2015), they could be modeled in humans thanks to the factorization of electromyographic (EMG) data (Dominici et al., 2011; Berger et al., 2013). In particular, the EMG activity of walking can be factorized into a few spatial and temporal computational modules that are suspected to correspond to actual physiological modules and to simplify the motor command of walking (Ivanenko et al., 2004; Chvatal and Ting, 2013).

This simplified modular control is concomitant with an optimized and adaptable gait (Alexander, 1991; Choi and Bastian, 2007; Neptune et al., 2009; Chvatal and Ting, 2012). However, the ease with which we move has developed over years and years of practice. Walking is indeed more difficult to handle in new walkers who fall on average 17 times per hour (Adolph et al., 2013) and who do not yet own mature gait patterns (Sutherland, 1997; Lacquaniti et al., 2012a). Particularly, the walking patterns of toddlers differ from those of adults regarding the high variability of their muscle activity across steps (Chang et al., 2006; Teulier et al., 2012). This variability partly originates from feedback corrections to control body weight and balance challenges (Kerkman et al., 2022). Yet, toddlers' motor patterns remain unstable and immature even with balance support, suggesting that stride-by-stride variability does not specifically originate from balance-related processes (Ivanenko et al., 2005). Interestingly, a growing body of evidence suggests that this variability, or at least part of it, is purposively generated by the CNS during motor learning to allow exploration (Kao et al., 2008; Mandelblat-Cerf et al., 2009; Ziegler et al., 2010; Wu et al., 2014; Dhawale et al., 2017). However, how this variability interacts with modularity remains unclear.

Inferring modules from averaged or single-step data, researchers found that the number of modules increased from birth to toddlerhood and then stabilized until adulthood (Dominici et al., 2011; Sylos-labini et al., 2020). Nevertheless, it was recently suggested that more individual muscle control was needed in toddlerhood compared to other stages of life to produce several steps (Hinneken et al., 2023). However, as toddlers face important balance challenges when walking, one could argue that the EMG activity used in the analyses largely originated from peripheral regulations (i.e., feedback corrections), thereby adding noise into the identification of modules. To further investigate this matter, we thoroughly investigated the link between stride-by-stride variability of muscle activity and muscle modularity in toddlers and adults, with or without supporting toddlers in order to manipulate balance constraints. In particular, we systematically analyzed the dimensionality of the inferred modular systems (i.e., number of modules) as well as the properties of their activations parameters (variability and selectivity of modules' activations).

## Methods

### Experimental protocol

Twelve adults (7 females, 5 males, age  $25.8 \pm 4$  years [mean  $\pm$  SD]) and 12 toddlers (3 females, 9 males, age  $15.5 \pm 2$  months) were recruited for this study. Toddler walking was recorded at a maternity while adults were tested in a laboratory at the university. Toddler experiments were planned one to 5 weeks after parents reported their

ability to walk independently and unsupported as a main mode of locomotion. 11 parents were able to give us the exact day when their child was able to "cross an entire room of about 16 feet by walking." Hence, toddlers' walking experience when coming to the lab was  $19.3 \pm 7.1$  days (mean  $\pm$  SD). The protocol was in accordance with the Helsinki Declaration and approved by the French Committee of People Protection. Parents of the children as well as adult participants gave written and informed consent before participation. Adults and toddlers were asked to walk barefoot at a comfortable speed for approximately 1 min. Toddlers had to walk back and forth along a two-meter exercise mat following a linear trajectory without any help from adults. About 8 steps could be recorded for a single straight walking path. Breaks were taken by toddlers when needed. In order to compare walking in toddlers with a control condition that would involve fewer balance constraints, 10 of the 12 toddlers underwent a control condition, during which they were held while stepping on a treadmill (see methods – control conditions).

### Data recording

#### EMG recording

Ten bilateral muscles were recorded for this study, as previous investigations of toddlers' modularity identified bilateral modules (Dominici et al., 2011; Sylos-labini et al., 2020). We recorded the activity of muscles from the shanks, thighs, and buttocks: tibialis anterior, soleus, rectus femoris, biceps femoris, and gluteus medius. Another 6 muscles (involving the trunk and proximal upper limb regions) were recorded for the need of other studies. Electrodes were placed according to SENIAM recommendations (Surface EMG for Non-Invasive Assessment of Muscles, [seniam.org](http://seniam.org)). Surface EMG data were recorded with the Cometa system (Biometrics®) at 2000 Hz with bipolar electrodes (21×41 millimeters).

#### Motion capture

Motion was recorded in adults and toddlers in order to detect stride events. In adults, we used an eight-camera Qualysis® system, recording at 100 Hz. Nineteen markers were placed on each individual, of which we used heel and toe (second metatarsal head) to determine gait events (O'Connor et al., 2007). The motion capture system was synchronized with the EMG systems thanks to a common trigger. In toddlers, we used two 2D cameras recording at 50 Hz. The same trigger as in adult recording was used to launch these cameras and the EMG systems. The toddler had to go back and forth along a two-meter exercise mat; thus, cameras were placed on each side of the mat in order to acquire a clear view of both sides of the body to detect gait events. Although a few motion capture markers appear in Figure 1, they were not used because event detection was made through video labeling in toddlers (see below).

### Data processing and computed parameters

#### Identification of stride events

We identified the Foot Off and Foot Strike events in both populations. A stride was defined from a Foot Off event to another Foot Off event. In both populations, we considered only right, alternated strides. Strides were analyzed only when the toddler was following a linear trajectory. The first and last steps of a crossing were never considered.

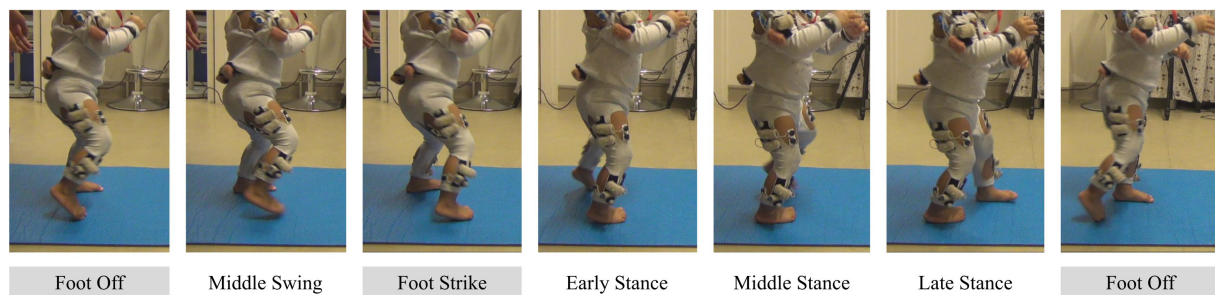


FIGURE 1

Illustration of stride events taken by the toddler. Events identified by the coder are shown with a grey background.

In adults, we used the foot velocity algorithm described by O'Connor et al. (2007) to detect Foot Off and Foot Strike. These events are more often referred to as Toe Off and Heel Strike in adults but we call them Foot Off and Foot Strike because toddlers do not necessarily start swing with the toe or end swing with the heel.

In toddlers, a trained coder screened all the videos and identified the Foot Off and Foot Strike events, as done in Teulier et al. (2012). The Foot Off event was defined as the last frame before the whole foot would stop touching the floor. The Foot Strike event was defined as the first frame where any part of the foot would touch the floor. The same coder waited a month after having done these identifications and identified again 50 strides from five different toddlers in order to compute an Intraclass Correlation Coefficient (ICC). This ICC was 0.99 showing excellent reliability in gait events identification. Figure 1 shows the view from one camera during a whole stride.

As our analysis focuses on intra-individual variability, it was important to analyze the same number of strides in each participant. For some toddlers, getting many straight steps was hard. Therefore, we constrained the analysis to 8 strides in order to consider a fixed number of strides in each participant. When more than 8 strides were available, a combination of 8 strides was randomly chosen among the available ones (in both toddlers and adults). From those 8 strides, we computed three basic kinematic parameters: stride duration, standard deviation of stride duration, and proportion of swing and stance phases.

## EMG processing

Filtering and interpolation of data were done as reported by Ivanenko et al. (2013). Data were high-pass filtered (40 Hz, zero lag fourth-order Butterworth filter), rectified, and low-pass filtered (10 Hz, zero lag fourth-order Butterworth filter). For each gait cycle, the signal was interpolated to 200 time points. The signal of each muscle was normalized by its maximum amplitude across 8 strides. In each participant, we obtained a  $(t \times s) \times m$  matrix where  $t = 200$  the number of time points,  $s = 8$  the number of strides, and  $m = 10$  the number of muscles. Each entry took values between 0 and 1, 1 representing the normalized maximum activity of the corresponding muscle. These matrices constituted the non-averaged EMG signals. Then we created other matrices from the latter ones by averaging across strides. These matrices were of the form  $t \times m$  and constituted the averaged EMG signals. As no consensus exists regarding the temporal normalization of data proceeding non-negative matrix factorization, the results of the study were verified after having

computed different variants (phase-interpolation rather than cycle-interpolation, computing RMS rather than standard interpolation, or basing the interpolation on 20 time-points rather than 200).

From the non-averaged EMG signals, we computed an index of EMG variability, as was done in Hinneken et al. (2020). This index was defined as the standard deviation computed point by point from the pre-processed EMG and across the 8 strides.

As cross-talk might be an issue when recording surface EMG data, we used the same criterion as Dominici et al. (2011) to report potential cross-talk (Pearson correlation coefficient  $> 0.2$ ). We computed Pearson correlation coefficients across four pairs of muscles on each side (rectus femoris and biceps femoris, tibialis anterior and soleus, gluteus medius and rectus femoris, gluteus medius and biceps femoris) on data after having applied the high-pass filter only. Thus, this analysis was made for 8 pairs of muscles, 8 strides and 12 subjects in both populations (i.e., 1,536 samples). 6% of samples had a correlation coefficient  $> 0.2$ . For these samples, we checked whole recordings and verified that different strides from one recording did not have the same correlation coefficient and were not all  $> 0.2$ .

## EMG factorization

We used the Space-by-Time Decomposition method in order to factorize the signal into spatial and temporal modules. This method, unifying previous approaches as described in Delis et al. (2014), is based on non-negative matrix factorization (NNMF). It allows to extract both spatial and temporal EMG invariants (modules) while retaining intra-individual variability in a low dimensional space (activation coefficients). Therefore, it allows to directly test the hypothesis that toddlers would benefit from the same low dimensional modular organization than adults while producing variability by generating differences within activation parameters of modules. Precisely, the EMG activity is factorized so that any muscle pattern  $\mathbf{m}_s(t)$  of the stride  $s$  is considered as the following double linear combination of invariant spatial and temporal modules:

$$\mathbf{m}_s(t) = \sum_{i=1}^P \sum_{j=1}^N w_i(t) a_{i,j,s} \mathbf{w}_j + \mathbf{r}_s(t)$$

where  $P$  and  $N$  are the numbers of temporal and spatial modules respectively,  $w_i(t)$  and  $\mathbf{w}_j$  are the temporal and spatial modules respectively,  $a_{i,j,s}$  is a scalar activation coefficient (function of the pair of modules it activates and stride  $s$ ), and  $\mathbf{r}_s(t)$  is the residual



reconstruction error describing the difference between the original signal and the reconstructed one. In this method, a spatial module is defined as an invariant ensemble of muscles which are activated together with different proportions (a constant 10-D vector here), and a temporal module is defined as a waveform that describes the amplitude changes of any spatial module over a gait cycle, invariant in regards to the different strides but time-varying within one stride (a time-varying function represented by 200 points here). An activation coefficient is attributed at each stride to each possible pair of spatial and temporal modules and quantifies their concurrent activation: a low activation coefficient means that the corresponding spatial and temporal modules are not activated together while a high one reveals a concurrent activation. Scalar activation coefficients are free to vary for each stride when using non-averaged EMG data. The algorithm was run with a custom Matlab® code. It starts from random guesses of the solution (modules and activation coefficients) and modifies these quantities until the reconstruction error is minimal, using a convergence criterion. This process was repeated 50 times for each decomposition to minimize the probability of being stuck in a local minimum.

### Code accessibility

The custom code underlying the computational analysis is available.<sup>1</sup> See [Delis et al. \(2014\)](#) for details about the code and algorithm.

### Quality of reconstruction criteria

The quality of reconstruction criteria, called Variance Accounted For (VAF), was computed as the coefficient of determination between the initial matrix of data and the reconstructed one using the following formula:

$$VAF = 1 - \frac{\sum_s \|r_s(t)\|^2}{\sum_s \|m_s(t) - \bar{m}\|^2}$$

where  $\bar{m}$  is the mean level of muscle activity across all samples and  $\|\cdot\|$  represents the Frobenius norm.

The VAF quantifies how faithful the original pattern is described by the decomposition. As the purpose of the decomposition is to reduce dimensionality, the VAF is directly related to the number of modules that is extracted (the VAF increases when the number of modules increases). Hence the signals can be considered as resulting from a low-dimensional modular organization if they can be factorized into a small number of modules with a good-enough VAF, as this is the case in adults. Numerous studies indeed identified that extracting four spatial and temporal modules from walking in adults was sufficient to describe its EMG activity and resulted in biomechanically functional modules ([Neptune et al., 2009](#); [Clark et al., 2010](#); [Lacquaniti et al., 2012b](#); [Hinneken et al., 2020](#)). Therefore, we used here two complementary approaches to study the command of toddlers in comparison to the one of adults: by comparing the VAF resulting from the extraction of the same number of modules (variant I) and by

comparing the necessary number of modules to get the same VAF value (variant II).

### Variant I: extracting the same number of modules as in adults and comparing the resulting VAF

This approach directly tests the hypothesis that a low-dimensional modular command model could equally fit each dataset. Based on previous literature we considered 4 spatial and temporal modules to be an efficient low-dimensional modular command ([Neptune et al., 2009](#); [Clark et al., 2010](#); [Lacquaniti et al., 2012b](#); [Hinneken et al., 2020](#)). Thus, we extracted 4 modules from each dataset and compared the resulting VAF. Interestingly, this variant allows to quantify the extent to which a reduction of dimensionality can fit the data with a continuous variable (rather than only analyzing the discrete number of modules), which yields more precise data for the statistical analysis. This approach was applied to both averaged and non-averaged data in order to quantify the effects of intra-individual variability on modularity.

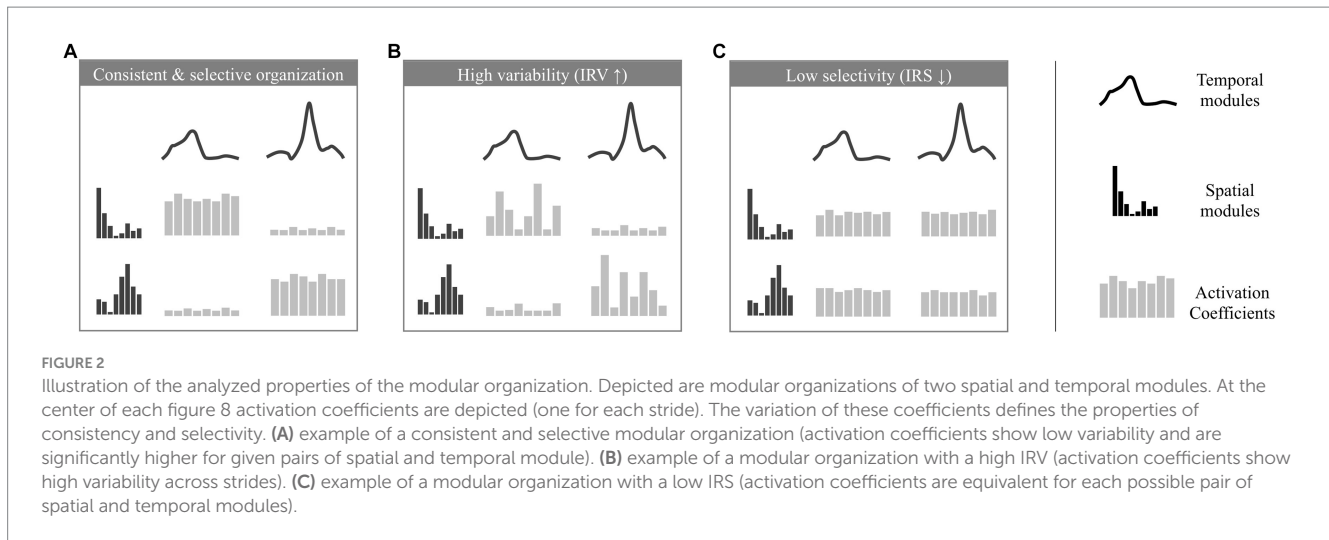
### Variant II: computing the necessary number of modules to reach a threshold VAF and comparing features of modular organization

After having tested if a low-dimensional modularity hypothesis would fit toddlers' data with variant I, this variant allowed to determine which dimensionality should be effectively considered in toddlers to allow a sufficient goodness of fit. We only analyzed non-averaged data from this point forward. This approach has been more commonly used in previous studies, although no consensus exists about the threshold VAF for a good quality of reconstruction ([Alessandro et al., 2013](#)). Hence here again we based the analysis on the numerous studies that identified four spatial and temporal modules as sufficient to describe the EMG activity of adult walking ([Neptune et al., 2009](#); [Clark et al., 2010](#); [Lacquaniti et al., 2012b](#); [Hinneken et al., 2020](#)) and we defined the threshold for a good quality of reconstruction as the averaged VAF (across individuals) obtained after extracting four modules from non-averaged data of adults walking ([Hinneken et al., 2020](#)). The resulting threshold was 0.75. Then we extracted enough modules in each toddler's dataset to reach this threshold VAF. This led to the identification of a specific modular organization in each toddler from which we could study the features of modules activations. For this purpose, we defined two indexes to compare the characteristics of modules activations of both populations, namely the Index of Recruitment Variability (IRV) and the Index of Recruitment Selectivity (IRS).

The IRV is defined as the average standard deviations of activation coefficients across strides (the standard deviation of activation coefficients is computed for each possible pair of spatial and temporal modules, and we consider the averaged value across all possible pairs). It indicates how variable are the stride-dependent activations of pairs of temporal/spatial modules. When the IRV is lower, modules recruitment can be considered as more stable ([Figure 2A](#)), while it increases when modules recruitment is more variable across strides ([Figure 2B](#)).

The IRS is computed using a metric to assess the sparseness of activation coefficients ([Hoyer, 2004](#)). It quantifies the extent to which modules are selectively and parsimoniously recruited. Modularity underlying mature walking is indeed thought to involve only four specific pairs of spatial and temporal modules ([Hinneken et al., 2020](#))

<sup>1</sup> <http://hebergement.universite-paris-saclay.fr/berret/software/sNM3F.zip>



where each spatial module is associated with a single temporal module (as in the example of Figure 2A with two pairs of spatial and temporal modules, which would correspond to a high IRS). In contrast, a lower IRS would correspond to a non-selective command exploiting the possible multiplexing of spatial and temporal modules and resulting in the concurrent activation of more pairs of modules (Figure 2C).

### Supplementary analyses

Following those computations, we tested the robustness of our findings regarding several methodological choices, as different methods of EMG preprocessing and EMG factorization exist within the literature. Therefore, we repeated the analysis by extracting spatial modules only (Chvatal and Ting, 2013), temporal modules only (Dominici et al., 2011), and from different EMG preprocessing band-pass filtering between 30 and 400 Hz, time interpolation computed with root mean squares, and phase interpolation instead of cycle interpolation (Hinneken et al., 2020).

## Statistical analyses

### Basic kinematic and EMG parameters

We compared basic kinematic and EMG parameters between the two populations: stride duration, standard deviation of stride duration, proportion of phases and index of EMG variability (described above). We used student t-tests on independent samples.

### Comparison of the goodness of fit with fixed number of modules (variant I)

To compare the faithfulness of modeling with fixed number of modules we computed the VAF resulting from the extraction of four spatial and temporal modules in both populations. To quantify the effect of stride-to-stride variability on this modeling and how it interacts with age, the extraction was made both from averaged and non-averaged signals. As VAF is not normally distributed, we transformed values using Fisher z-transformation before this statistical analysis. We compared the resulting transformed VAF with a mixed ANOVA, with one within-subjects factor (averaging or not) and one between-subjects factor (toddlers/adults). Student t-tests

were performed as *post-hocs* and resulting *p*-values were multiplied by 4 to account for multiple comparisons (four *post-hoc* tests).

### Comparison of the modular parameters with fixed goodness of fit (variant II)

To identify faithful modeling of data in toddlers, we incremented the number of modules until the threshold VAF would be reached, as described above. We obtained a specific modular organization with a specific number of modules in each toddler. IRV and IRS were computed from these specific modular organizations. Values for adults and toddlers were compared using a student t-test on independent samples.

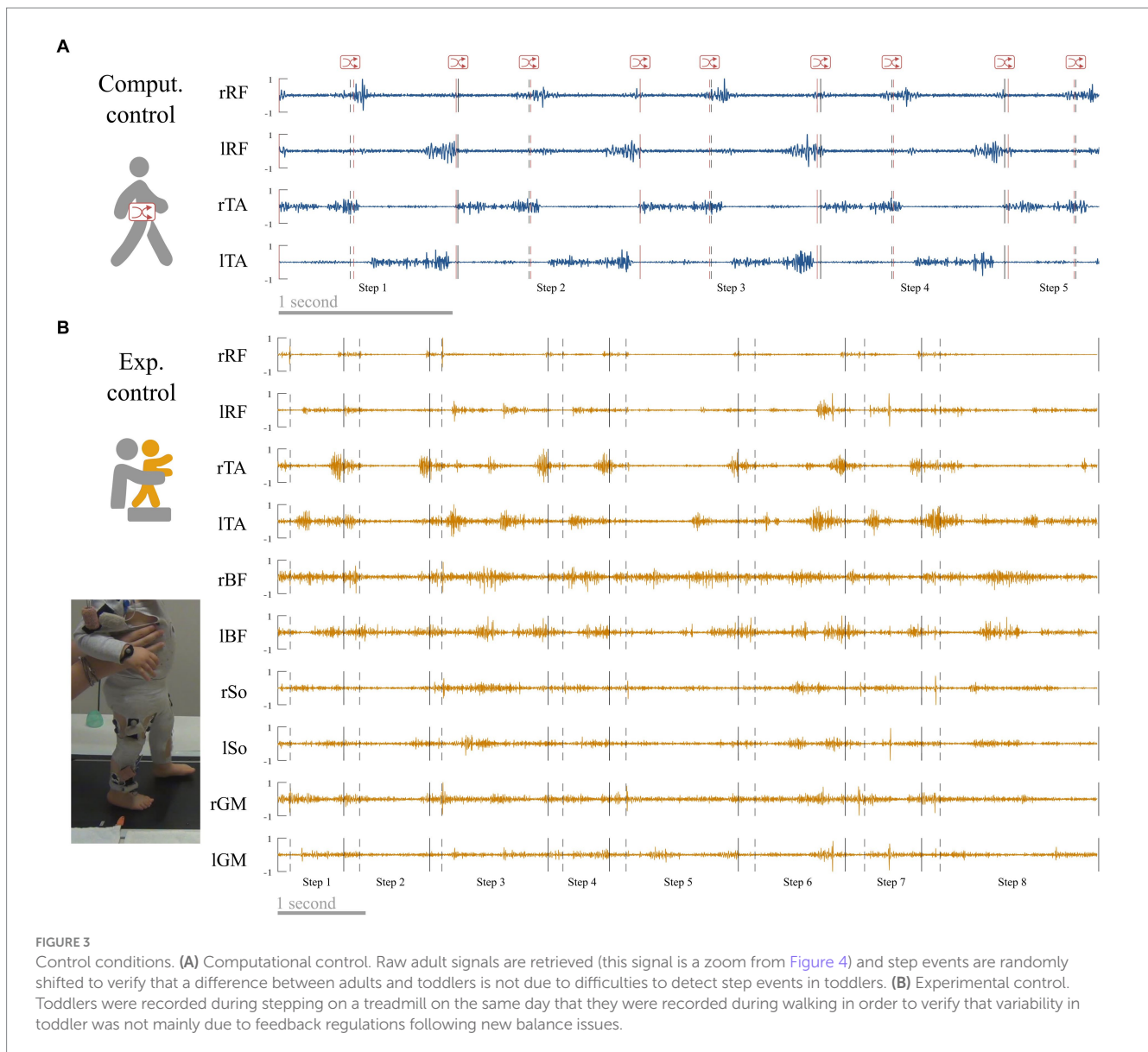
To facilitate comparisons between adults and toddlers we reproduced these analyses for the modeling of toddler's data with four spatial and temporal modules. As adult's data are modeled with four spatial and temporal modules, this ensures that differences between modular parameters are not due to the difference in the number of modules.

## Control conditions

We used two control conditions to verify that our results were not mainly due to non-physiological variability or to variable feedback regulations that would be associated with new balance constraints in toddlers.

The first control condition called "computational control" verifies the results of adults data. It was created from adult walking data in order to control the fact that gait events might be less easily recognizable in toddlers. As we coded event in toddler visually, and even if the intraclass reliability was excellent, we could expect that this coding could result in less precision than the adult algorithm. Hence to check the possible effects of an unintended shifting, we introduced random offset delay in the adult event detection from  $-2$  to  $+2$  frames of the real time event and repeated the analysis from adult data that were cut-off according to this randomly shifted-detection matrix instead of the original one (Figure 3A). Individual data for each index in both primary and control conditions are reported in Supplementary Table S1.

The second control condition called "experimental control" verifies the results of toddlers' data. As toddlers are new walkers, their EMG signals could be affected by noise or enhanced EMG



variability due to several factors that are not linked with the central command (e.g., walking speed variability, feedback regulations due to postural instability). To address this matter, 10 of the 12 toddlers of the study were recorded while stepping on a treadmill (Figure 3B) in addition to walking. During this recording, toddlers were bearing their weight but moving only their legs while being maintained under the armpits by the experimenter to reduce balance constraints. The speed of the belt (and as a result walking speed) was fixed to 17.24 cm/s. We repeated all analyses with those data. As this paper relies on a computational and modeling approach, we cannot draw conclusions regarding the central origin of motor modules. However this supplementary analysis controls for the possibility that the results would only originate from feedback regulations of peripheral origin. Individual data for each index in both primary and control conditions are reported in Supplementary Table S1 (note that no control values exist for toddlers 1 and 2 because they did not produce enough stepping cycles).

Each statistical analysis of the paper was first performed between primary conditions (adults vs. toddlers values) and was repeated separately for each control condition (i.e., i) replacing adults values with computational control values and comparing it with primary toddlers values, and (ii) replacing toddlers values with experimental control values and comparing it with primary adults values (see Tables 1, 2).

## Results

### Differences in basic kinematics and EMG parameters

Student t-tests on independent samples showed that walking was different between the two populations regarding kinematic parameters (Figure 4C). As reported by Ivanenko et al. (2013), stride duration was significantly higher in adults than in toddlers

TABLE 1 Summary of statistical analyses associated with variant I.

		Comparison between adults and toddlers		Computational control instead of adult values		Experimental control instead of toddlers values	
		Non-averaged	Averaged	Non-averaged	Averaged	Non-averaged	Averaged
Adults	Mean VAF ± SD	0.74 ± 0.04	0.85 ± 0.05	0.73 ± 0.04	0.85 ± 0.05	0.74 ± 0.04	0.85 ± 0.05
	Mean transf. VAF ± SD	1.30 ± 0.1	1.62 ± 0.18	1.29 ± 0.09	1.64 ± 0.18	1.30 ± 0.1	1.62 ± 0.18
Toddlers	Mean VAF ± SD	0.57 ± 0.06	0.90 ± 0.02	0.57 ± 0.06	0.90 ± 0.02	0.59 ± 0.05	0.94 ± 0.02
	Mean transf. VAF ± SD	1.00 ± 0.1	1.85 ± 0.09	1.00 ± 0.1	1.85 ± 0.09	1.01 ± 0.09	2.09 ± 0.15
Mixed ANOVA interacting effect		$p < 0.001$		$p < 0.001$		$p < 0.001$	
<i>Post-hoc</i> t-test <i>p</i> values (adults vs. toddlers)		$p < 0.001$	$p = 0.003$	$p < 0.001$	$p = 0.007$	$p < 0.001$	$p < 0.001$
<i>Post-hoc</i> t-test <i>p</i> values (averaged vs. non-av.)		Adults: $p < 0.001$ Toddlers: $p < 0.001$		Adults: $p < 0.001$ /		/ Toddlers: $p < 0.001$	

Each dataset was modeled with four spatial and temporal modules, starting from either averaged or non-averaged EMG data. The resulting VAF (i.e., goodness of fit) was transformed with a Fisher transformation. A mixed ANOVA was performed to characterize the interacting effect of age (adults vs. toddlers) and stride-to-stride variability (averaged vs. non-averaged data) on modularity. Following this ANOVA, Student *t*-tests were performed as *post-hoc* tests to characterize the difference of goodness of fit between adults and toddlers. Comparison between adults and toddlers (first column) is the primary analysis. Other columns report the same analysis with control conditions. *Post-hoc* *p* values were obtained from *t*-tests and then multiplied by 4 to account for multiple comparisons after the ANOVA (four *post-hoc* comparisons).

TABLE 2 Summary of statistical analyses associated with variant II.

		Main analysis (with each individual's number of modules)			Verification of results with 4 modules	
		Number of modules	IRV	IRS	IRV	IRS
Mean ± SD	Adults	4.7 ± 0.6	4.25 ± 0.93	0.61 ± 0.03	4.64 ± 0.95	0.61 ± 0.02
	Computational control	4.7 ± 0.6	4.73 ± 1.04	0.60 ± 0.03	5.16 ± 1.07	0.61 ± 0.02
	Toddlers	6.8 ± 0.8	7.27 ± 1.57	0.40 ± 0.04	17.28 ± 2.53	0.47 ± 0.06
	Experimental control	7.1 ± 1.0	6.69 ± 2.69	0.40 ± 0.04	16.77 ± 2.05	0.40 ± 0.03
T-test <i>p</i> values	Adults vs. toddlers	$p < 0.001$	$p < 0.001$	$p < 0.001$	$p < 0.001$	$p < 0.001$
	Computational control instead of adult values	$p < 0.001$	$p < 0.001$	$p < 0.001$	$p < 0.001$	$p < 0.001$
	Experimental control instead of toddlers values	$p < 0.001$	$p = 0.01$	$p < 0.001$	$p < 0.001$	$p < 0.001$

We extracted enough modules in each individual to model non-averaged data with a sufficient goodness of fit (i.e., to reach the threshold VAF of 0.75). The mean number of modules for each condition is reported in the table. Then we characterized variability (IRV index) and selectivity of modules activations (IRS index) within the corresponding modular organization. Student *t*-tests were performed to characterize differences between adults and toddlers. The main analysis is presented on the top line and left columns. To check reliability of results, we repeated the analysis with a fixed number of modules (verification of results with four modules, right columns). Every result was verified with control conditions instead of primary ones (see the two last lines).

walking ( $p < 0.001$ ). However, stride duration was significantly higher in experimental control (toddlers stepping) than in adults walking ( $p < 0.001$ ). Variability of stride duration was significantly higher in toddlers than in adults considering either walking ( $p < 0.001$ ) or stepping (i.e., experimental control,  $p < 0.001$ ). The proportion of phases was also significantly different, with adults presenting a shorter proportion of stance phase ( $63 \pm 1.2\%$ ) than toddlers ( $73.3 \pm 4.5\%$ ,  $p < 0.001$ ), with an even bigger difference when compared to toddlers stepping (i.e., experimental control,  $79.4 \pm 3.6\%$ ,  $p < 0.001$ ).

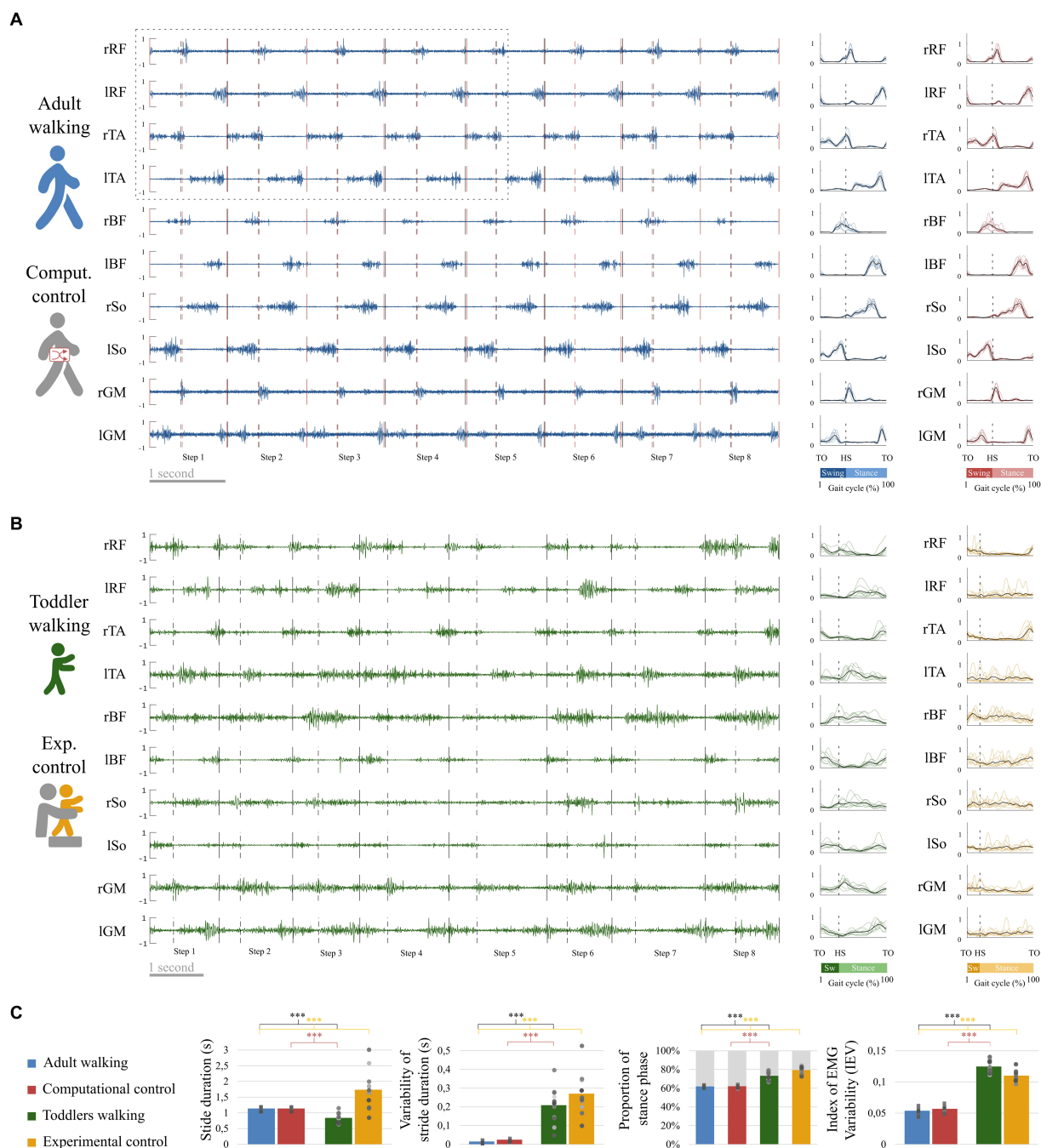
The index of EMG variability (IEV) was significantly higher in toddlers than in adults ( $p < 0.001$ ), indicating that pre-processed data were more variable across strides in toddlers. Raw EMG and corresponding pre-processed data are illustrated in Figures 4A,B for a representative adult and a representative toddler. Replacing primary adult data by the computational control condition (i.e., adult data with randomly shifted detection of gait events) or toddler data by the experimental control

condition (i.e., toddler stepping) systematically confirmed this effect ( $p < 0.001$ ; Figure 4C; Supplementary Table S1).

### The low-dimensional model of adults modular control does not account for stride-by-stride variability in toddlers

As explained in the method section, we computed the VAF with two approaches: to compare the goodness of fit with a fixed number of modules (variant I), and to compare the modular organization for a fixed goodness of fit (variant II). The results of the first approach are depicted in Figure 5A. The mixed ANOVA showed a significant interaction effect between the signal processing (averaged or not) and the population ( $p < 0.001$ ). This result was verified with other methods, extracting only spatial or temporal invariances, or pre-processing data differently (regarding filtering and time-interpolation). Student *t*-tests were performed as *post-hocs* and resulting *p*-values were multiplied by

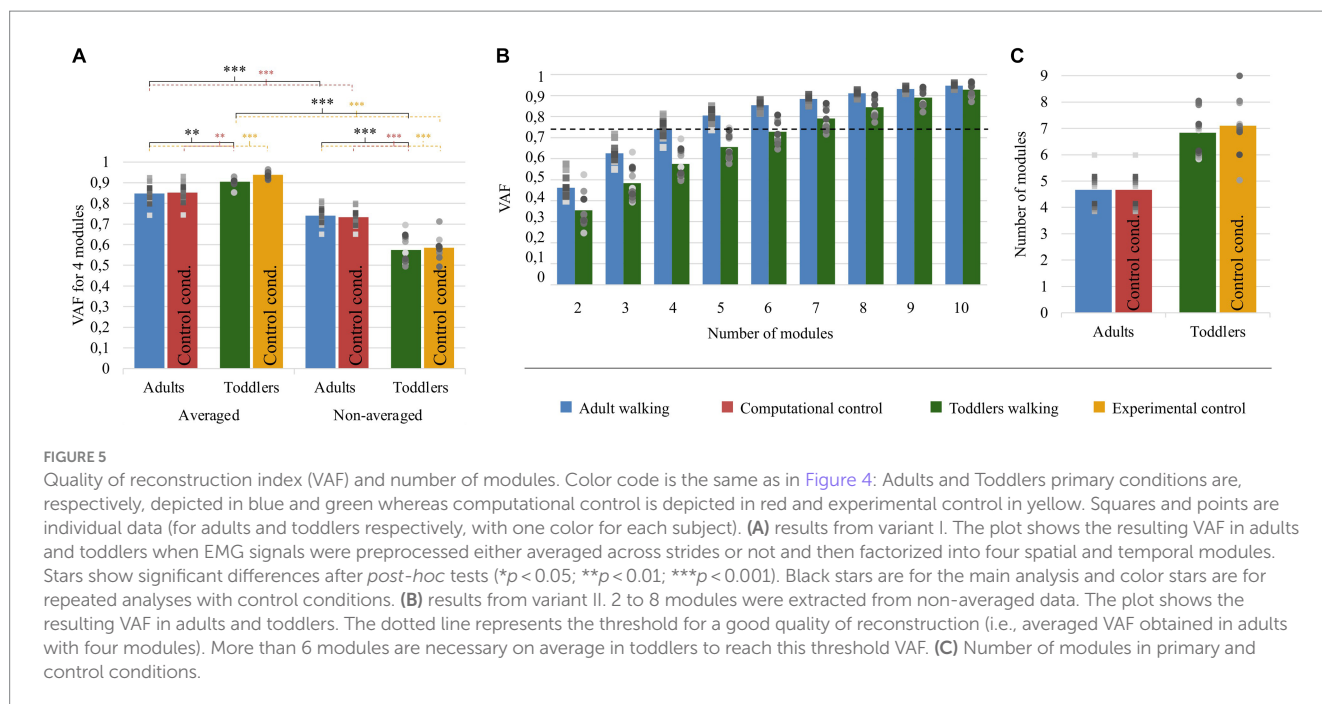




**FIGURE 4**  
 EMG and basic kinematic parameters in adults and toddlers and for control conditions. **(A)** Raw EMG in a representative adult. Preprocessed EMG are depicted at the right of the figure, in blue for this representative adult and in red for the control condition (randomly shifted detection of gait event, see Figure 3A). The black lines represent the average signal of the corresponding muscle in this participant after preprocessing while colored lines represent the signal of the corresponding muscle in each stride for the same participant. **(B)** Raw EMG for a representative toddler. Preprocessed EMG are depicted at the right of the figure, in green for walking and in yellow for the control condition (stepping in the same participant, see Figure 3B). **(C)** Basic kinematic and EMG parameters. From left to right: Stride duration, Variability of stride duration, Proportion of phases across the gait cycle, and Index of EMG Variability. Squares and points are individual data (for adults and toddlers respectively, with one color for each subject). Stars show significant differences after *post-hoc* tests (\* $p < 0.05$ ; \*\* $p < 0.01$ ; \*\*\* $p < 0.001$ ). Black stars are for the main analysis and color stars are for repeated analyses with control conditions.

4 to account for multiple comparisons (four *post-hoc* tests). When extracting from an averaged signal across strides, the VAF was higher in toddlers compared to adults ( $0.90 \pm 0.02$  vs.  $0.85 \pm 0.05$ ). On the contrary, when extracting from a non-averaged signal, the VAF was significantly

lower in toddlers compared to adults ( $0.57 \pm 0.06$  vs.  $0.74 \pm 0.04$ ,  $p < 0.001$ ). These results show that toddler's walking EMG signals cannot be decomposed into four spatial and temporal modules with the same goodness of fit as in adults when considering several cycles. Repeating



the analysis with both control conditions gave similar values than in primary ones and the ANOVA gave similar results (see Table 1; Supplementary Table S1).

## Variability and selectivity of toddlers' modules activation within their higher-dimensional command

The second purpose of our analysis (variant II) was to identify the dimensionality of the modular organization that would allow to reach the same goodness of fit in toddlers than in adults with four modules. The threshold VAF, precisely defined as the averaged VAF obtained in adults by extracting four modules from non-averaged data, was reached differently for each toddler, with on average  $6.83 \pm 0.80$  modules per individual. Applying the same rule for adults resulted in  $4.67 \pm 0.62$  modules per individual which is significantly lower ( $p < 0.001$ ). As such, more modules are needed in toddlers to reach the same quality of reconstruction than in adults walking when considering stride-by-stride variability (Figures 5B,C). Nevertheless, the number of modules might not be the only interesting feature of a modular organization, as these modules can be activated differently across strides for a high or low number of pairs of spatial and temporal modules. Therefore, the indexes of recruitment variability and selectivity (IRV and IRS) were computed following the extraction of the specific number of modules of each individual. Even if extracting from the specific number of modules of each individual only gives a faithful modeling of EMG data, these indexes were also extracted with a fixed number of modules (i.e., following variant I) to verify that the effect was not due to methodological choices.

The IRV was significantly higher in toddlers than in adults, whether it was computed from 4 spatial and temporal modules or from the specific number of modules of each individual (i.e., from variant I or variant II, Figures 6C,  $p < 0.001$  in both cases). This

indicates that the recruitment of modules occurring on each stride was much more variable in toddlers than in adults, as illustrated in Figure 6B by a large spread of activation coefficients across strides. Analyzing data from control conditions instead of primary conditions yielded similar results (Figure 6C; Table 2; Supplementary Table S1).

The IRS was significantly lower in toddlers, here again from variant I or variant II (Figures 6C,  $p < 0.001$  in both cases). The command seems to be more selective in adults than in toddlers. Figure 6 illustrates this difference as it shows that adult modular organization involve four pairs of spatial and temporal modules, each spatial module being activated with one temporal module only (Figure 6A). However, toddler modular organization shows scattered activations, with spatial modules being activated with several temporal modules and vice versa (Figure 6B). Here again, analyzing data from control conditions yielded similar results (Figure 6C; Table 2; Supplementary Table S1).

## Discussion

In this paper we aimed to compare the modular organization of toddlers and adults during several strides of walking. Our results showed that the stride-by-stride variability of toddlers' muscle pattern cannot be simplified in as few dimensions as in adults. From a computational perspective, variability of EMG signals in toddlers seems to involve a high number of computational modules whose degree of activation across steps itself varies, suggesting the plasticity of the motor command. From a neural perspective, these results could indicate the existence of a more complex modularity than in adults, but also the absence of an encoded modularity in toddlers, or the existence of a mixed command associated an adult-like modular organization with other sources of variability. Below we discuss these possible interpretations as well as the extent to which modularity could be involved in motor exploration early in development.



**FIGURE 6**  
 Properties of the modular organization of adults and toddlers. **(A)** Result of the factorization in a representative adult. Adult factorization is depicted for four spatial and temporal modules based on literature. **(B)** Result of the factorization in a representative toddler. Toddler factorization is depicted for six spatial and temporal modules, which was the minimum number of modules in this individual to cross the threshold VAF. In each figure, spatial modules are displayed on the left, and muscle weighting are represented in the following order: rectus femoris (RF), tibialis anterior (TA), biceps femoris (BF), soleus (So) and gluteus medius (GM) for the right side then for the left side. Temporal modules are depicted on the top of each figure. They represent 200 time points from the beginning of swing to the end of stance (considering phases of the right lower-limb). Activation coefficients are depicted in the center of each figure. Each bar represents the activation coefficient corresponding to one stride. An activation coefficient represents the concurrent activation of the corresponding pair of spatial and temporal modules during one stride. In each subplot, the y axis represents the amplitude of activation (arbitrary units). **(C)** Comparison of the modular organization properties in toddlers and adults. The Index of Recruitment Variability (top)

(Continued)

FIGURE 6 (Continued)

indicates how variables activation coefficients are across the 8 steps in each population and condition. The index of Recruitment Selectivity (bottom) indicates how selectively distributed are those activation coefficients (i.e., exclusively activated with a given spatial or temporal modules or distributed across several ones). Results were verified with a fixed number of modules (stripped bars) to ensure that the effect was not due to methodological choices. Stars show significant differences ( $*p < 0.05$ ;  $**p < 0.01$ ;  $***p < 0.001$ ). Squares and points are individual data (for adults and toddlers respectively, with one color for each subject).

Variability appeared as a key feature of the motor control of toddlers at each level of motor organization recorded here: kinematic output (standard error of stride duration), muscular activity (IEV) and activation of modules (IRV). Important variability in muscular activity was already reported in toddlers walking (Chang et al., 2006), stepping (Teulier et al., 2012), or even chewing (Green et al., 1997). Nevertheless, it could have been explained by variable activations of a small number of modules that would be equivalent to the one observed in adults, as it seems to be the case in infants (Hinneken et al., 2023). Adults walking has indeed been described numerous times as controllable with 4 consistently activated modules (Neptune et al., 2009; Clark et al., 2010) with a strong consistency across individuals even when taking into account intra-individual variability (Hinneken et al., 2020). Here, this 4-modules model fitted well when applied to toddlers' averaged data, but applying it to toddlers' non-averaged data resulted in a significantly lower VAF. This was the case when analyzing toddler walking, but also for the experimental control condition of stepping (even though it involved less balance challenge and a fixed speed). Thus, the modular activity of toddlers seems to result from a more spread-out and variable activation of a higher number of modules.

On this matter, the origin of the variability that is observed in non-averaged data is often discussed. In general, two types of variability can be distinguished: the one coming from the motor periphery and the one coming from central planning circuits. Peripheral feedback regulations involving reflex loops could play an important role on muscle activity. Here, toddler walking was investigated overground but also as the task of stepping on a treadmill with body weight support, which reduced the need for balance-related corrections but still led to a significant stride-by-stride EMG variability in toddlers. An explanation for this phenomenon could be the central origin of this variability. Centrally generated variability has been widely documented and has been assumed to drive learning-related, purposeful motor exploration (Dhawale et al., 2017). In learning monkeys or songbirds, neurons from different areas of the forebrain seem to generate variability on purpose for motor exploration (Kao et al., 2008; Mandelblat-Cerf et al., 2009). When such motor exploration is prevented by limiting the possible variability of movements, the learning potential at the spinal level is reduced (Ziegler et al., 2010). Similarly, in human adults performing a new task, trial-by-trial variability predicts motor learning ability (Wu et al., 2014), and in human infants, the absence of variability can be considered a sign of motor disability (Hadders-Algra, 2008; Hadders-algra, 2018). Although we cannot fully distinguish the influence of each type of variability on the motor patterns here, this suggests that feedback regulations are not the only explanation for the fact that multiple strides cannot be factorized into as few modules in toddlers as in adults.

Modeling the motor command at the origin of several strides led to the identification of a higher number of computational

modules in toddlers compared to adults. As such, the optimized modular structure that can be found in adults muscle output seems to be shaped and optimized over a long period of time during development. Modules are indeed known to fraction in early life (Dominici et al., 2011; Sylos-labini et al., 2020; Hinneken et al., 2023), and the results reported here suggest that they could be also merged again at some point between childhood and adulthood. This is indeed coherent with recent studies that identified fewer motor synergies in walking and/or running in adults than in children (Cheung et al., 2020; Bach et al., 2021). Interestingly, recent data regarding the development of running showed that running started with a small set of computational modules that will first fraction with age and then merge with experience, which, respectively, corresponds to an increase and a decrease of the number of modules (Cheung et al., 2020). From a computational perspective, the existence of more modules during a temporary state actually makes sense early in development as modularity is associated with a restriction of the possible options for the motor system (Valero-Cuevas, 2009), while variability seems necessary for exploration of the space of possible options (Wu et al., 2014). This temporary state could furnish the possibility to test several muscle associations before choosing the optimized ones. In addition to owning more modules, toddlers seem to be able to flexibly activate those modules across steps, as observed through IRV and IRS indexes (Figure 6). As this leads to an even wider space of possible muscle coordination's, exploration might be particularly boosted during this phase of development. Interestingly this plasticity coincides with an age when infants show a high capacity to shift across locomotor strategies (Ossmy and Adolph, 2020), suggesting an important plasticity of the motor system. It is important to acknowledge that several methodological biases inherently limit the interpretation of our findings. A significant challenge arises from the absence of a current consensus on the diverse methodologies applicable to the analysis of muscular synergies, particularly concerning the normalization processes of EMG data (both temporally and spatially, even though we verified our results with several methods here) and determining the optimal number of steps for robust data modeling. Here we wanted to ensure both an adequate sample size of children for meaningful analysis and a reasonable and uniform number of steps in the analysis. It indeed seemed crucial to maintain consistency in the number of steps for comparability of variability. However, reproducing our approach with a bigger number of steps and a bigger sample size would enable the validation of our conclusions. Another limitation of this study lies in the fact that gait events were computed differently for toddlers and adults. However, we addressed this matter by introducing the "computational control" condition, which shows that small offsets in gait event detections in adult data do not affect the results.

We should also mention that the results presented here are derived from modeling approaches, which might differ from the actual neural



command. As such, we discuss below the different possible interpretations of our results at a neural level, as well as the different methodologies that can help in approaching the real sources of motor variability, and try to identify the challenges that could be addressed in future studies. From a neural perspective, different hypotheses could indeed be made. First, the high dimensionality identified here during several strides could correspond to actual modules that exist within the CNS, and that were fractioned and particularly plastic at this stage of development. However, our results could also originate from the absence of modular control at this temporary point of development. A non-modular control would indeed result in a high number of computational modules after NNMF because the method will always output some modules even if an efficient factorization cannot be established. In between these two extreme views, walking in toddlers might be the result of a mixed command associating modular inputs that still have to be selected and adequately activated, and non-modular inputs that will be stabilized before being integrated into modules with learning. Sylos-Labini et al. (2022) recently tackled this issue by exploring the effect of adding non-modular noise into simulated data. They show that noise of non-modular origin significantly affects the VAF, which can lead to the identification of too many modules after NNMF (as the number of identified modules directly depends on the VAF). As such, toddlers could own the same number of modules as adults, which would suggest that the results presented in striped histograms (Figure 6C) would be more representative of reality. While we are not aware of any methodology allowing to distinguish modular and non-modular inputs before factorizing EMG data, we also tried to tackle the matter of the origin of variability by recording the EMG signals of toddlers after having experimentally removed several potential origins of motor noise. Indeed, by testing toddlers being held over a treadmill, we ensured that their walking speed would be steady and that toddlers would not be challenged by too many balance issues. Interestingly, this yielded very similar results, suggesting that although the noise affecting NNMF could be non-modular, it does not stem from peripheral regulations resulting from balance constraints only. Therefore, such non-modular noise could itself have a central origin. To further address this matter, future work could combine both methodologies and directly compare the effect of experimentally removing sources of noise in noisy data, with computationally adding noise in non-noisy data.

The idea that walking in toddlers results from a mixed command associating modular and non-modular inputs is coherent with the fact that mature behaviors are known to rely on task-specific modules but also on shared modules, in invertebrates (Jing et al., 2004), frogs (d'Avella and Bizzi, 2005) and humans (Barroso et al., 2014; Nazifi et al., 2017; Hinnekens et al., 2020). Shared modules could be involved when adapting to a new task and facilitate learning while being associated with non-modular inputs, before the creation of task-specific modules that could happen in the longer term (Berger et al., 2013). As such, mature modules might be shaped through practice, as neurons that fire together wire together (Hebb, 1949), coherently with the particularly important plasticity that exists early in development involving mechanisms such as long-term potentiation that are activity-dependent (de Graaf-Peters and Hadders-Algra, 2006; An et al., 2012). Those modules might be tuned during infancy thanks to early spinal plasticity (Vinay et al., 2000; Brumley et al., 2015) which would allow them to remain plastic during toddlerhood. Later in life, mature modules might therefore reflect motor habits originating from

coordination's that would have been learned as optimal (de Rugy et al., 2012; Berret et al., 2019). As stated before, it could be argued that the existence of modules at walking onset could limit motor exploration (Valero-Cuevas, 2009). However, limiting the available space of possible options to some extent might facilitate and guide learning, as described decades ago by (Bernstein, 1967) and observed nowadays in robotics (Lapeyre et al., 2011) or when using reinforcement learning algorithms, whose success precisely lies on a reduction of the dimensionality of the solution space (Dhawale et al., 2017). Fractioned modules that can still be flexibly activated at walking onset might constitute an ideal compromise of exploration and exploitation. In this vein, the plasticity of motor modules throughout life, associating phases of fractioning and merging of modules (Cheung et al., 2020; Sylos-labini et al., 2020; Hinnekens et al., 2023) might follow the development of other sources of constraints. For example in the womb, the limited space constrains possibilities for the kicking behavior (Piek, 2002) which leads to the emergence of a specific kicking pattern available at birth (Musselman and Yang, 2008; Robinson et al., 2008). In this context, modules could be used to store temporary solutions, creating new constraints at time points when external constraints are diminished. As such, development of modularity is likely to be a dynamic mechanism alternating phases of module shaping and phases of exploration within the resulting restricted space, as "in a modular controller, learning is partitioned into two processes: learning the modules and learning the parameters of the modules' combination rules" (d'Avella and Pai, 2010). The modular system should continue to be tuned until the end of growth, as mature modules need to integrate biomechanical properties of the musculoskeletal system (Bizzi et al., 1991; Bizzi and Cheung, 2013) as well as each individual's specificities (Torres-Oviedo and Ting, 2010; Bizzi and Cheung, 2013). Although descriptive and based on EMGs, our study suggests that the motor system is quite plastic around toddlerhood, coherently with current recommendations for the implementation of early therapies (Ulrich, 2010). Future studies need to better identify if critical periods of module acquisition exist during motor development.

## Data availability statement

The raw data supporting the conclusions of this article will be made available by the authors, without undue reservation.

## Ethics statement

The studies involving humans were approved by CPP Sud ouest IV (N°2017-A02596-47). The studies were conducted in accordance with the local legislation and institutional requirements. Written informed consent for participation in this study was provided by the participants' legal guardians/next of kin.

## Author contributions

EH: Conceptualization, Data curation, Formal analysis, Investigation, Methodology, Writing – original draft. BB: Conceptualization, Formal analysis, Software, Supervision, Writing

– review & editing, Validation. EM: Data curation, Investigation, Writing – review & editing. MC-D: Conceptualization, Project administration, Supervision, Writing – review & editing. MB-R: Funding acquisition, Resources, Writing – review & editing. CT: Conceptualization, Data curation, Investigation, Methodology, Project administration, Supervision, Validation, Writing – review & editing.

## Funding

The author(s) declare that no financial support was received for the research, authorship, and/or publication of this article.

## Acknowledgments

We thank François Goffinet, head of the Port-Royal maternity in Paris, for encouraging this study. We also thank the Région Ile-de-France for their participation in the initial set-up of the babylab. Finally, we warmly thank all infants and parents who participated in the study.

## References

- Adolph, K. E., Cole, W. G., Komati, M., Garciaguirre, J. S., Lingeman, J. M., Chan, G., et al. (2013). How do you learn to walk? *Thousands of steps and dozens of falls per day*. 23, 1387–1394. doi: 10.1177/0956797612446346.Hov
- Alessandro, C., Delis, I., Nori, F., Panzeri, S., and Berret, B. (2013). Muscle synergies in neuroscience and robotics: from input-space to task-space perspectives. *Front. Comput. Neurosci.* 7, 1–16. doi: 10.3389/fncom.2013.00043
- Alexander, R. M. (1991). Energy-saving mechanisms in walking and running. *J. Exp. Biol.* 160, 55–69. doi: 10.1242/jeb.160.1.55
- An, S., Yang, J., Sun, H., Kilb, W., and Luhmann, H. J. (2012). Long-term potentiation in the neonatal rat barrel cortex in vivo. *J. Neurosci.* 32, 9511–9516. doi: 10.1523/JNEUROSCI.1212-12.2012
- Bach, M. M., Daffertshofer, A., and Dominici, N. (2021). Muscle synergies in children walking and running on a treadmill. *Front. Hum. Neurosci.* 15:637157. doi: 10.3389/fnhum.2021.637157
- Barroso, F. O., Torricelli, D., Moreno, J. C., Taylor, J., Gomez-Soriano, J., Bravo-Esteban, E., et al. (2014). Shared muscle synergies in human walking and cycling. *J. Neurophysiol.* 112, 1984–1998. doi: 10.1152/jn.00220.2014
- Berger, D. J., Gentner, R., Edmunds, T., Pai, D. K., and D'Avella, A. (2013). Differences in adaptation rates after virtual surgeries provide direct evidence for modularity. *J. Neurosci.* 33, 12384–12394. doi: 10.1523/JNEUROSCI.0122-13.2013
- Bernstein, N. A. (1967). *The co-ordination and regulation of movements*. 1st ed. ed. P. Press Oxford.
- Berret, B., Delis, I., Gaveau, J., and Jean, F. (2019). “Optimality and modularity in human movement: from optimal control to muscle synergies” in *Biomechanics of anthropomorphic systems*. eds. G. Venture, J.-P. Laumond and B. Watier (Cham: Springer), 105–133.
- Bizzi, E., and Cheung, V. C. K. (2013). The neural origin of muscle synergies. *Front. Comput. Neurosci.* 7, 1–6. doi: 10.3389/fncom.2013.00051
- Bizzi, E., Cheung, V. C. K., d'Avella, A., Saltiel, P., and Tresch, M. (2008). Combining modules for movement. *Brain Res. Rev.* 57, 125–133. doi: 10.1016/j.brainresrev.2007.08.004
- Bizzi, E., Mussa-Ivaldi, F., and Giszter, S. (1991). Computations underlying the execution of movement: a biological perspective. *Science* 253, 287–291. doi: 10.1126/science.1857964
- Brumley, M. R., Kauer, S. D., and Swann, H. E. (2015). Developmental plasticity of coordinated action patterns in the perinatal rat. *Dev. Psychobiol.* 57, 409–420. doi: 10.1002/dev.21280
- Chang, C.-L., Kubo, M., Buzzi, U., and Ulrich, B. D. (2006). Early changes in muscle activation patterns of toddlers during walking. *Infant Behav. Dev.* 29, 175–188. doi: 10.1016/j.infbeh.2005.10.001
- Cheung, V. C. K., Cheung, B. M. F., Zhang, J. H., Chan, Z. Y. S., Ha, S. C. W., Chen, C. Y., et al. (2020). Plasticity of muscle synergies through fractionation and

## Conflict of interest

The authors declare that the research was conducted in the absence of any commercial or financial relationships that could be construed as a potential conflict of interest.

## Publisher's note

All claims expressed in this article are solely those of the authors and do not necessarily represent those of their affiliated organizations, or those of the publisher, the editors and the reviewers. Any product that may be evaluated in this article, or claim that may be made by its manufacturer, is not guaranteed or endorsed by the publisher.

## Supplementary material

The Supplementary material for this article can be found online at: <https://www.frontiersin.org/articles/10.3389/fncir.2023.1340298/full#supplementary-material>

merging during development and training of human runners. *Nat. Commun.* 11, 4356–4315. doi: 10.1038/s41467-020-18210-4

Choi, J. T., and Bastian, A. J. (2007). Adaptation reveals independent control networks for human walking. *Nat. Neurosci.* 10, 1055–1062. doi: 10.1038/nn1930

Chvatal, S. A., and Ting, L. H. (2012). Voluntary and reactive recruitment of locomotor muscle synergies during perturbed walking. *J. Neurosci.* 32, 12237–12250. doi: 10.1523/JNEUROSCI.6344-11.2012

Chvatal, S. A., and Ting, L. H. (2013). Common muscle synergies for balance and walking. *Front. Comput. Neurosci.* 7, 1–14. doi: 10.3389/fncom.2013.00048

Clark, D. J., Ting, L. H., Zajac, F. E., Neptune, R. R., and Kautz, S. A. (2010). Merging of healthy motor modules predicts reduced locomotor performance and muscle coordination complexity post-stroke. *J. Neurophysiol.* 103, 844–857. doi: 10.1152/jn.00825.2009

d'Avella, A., and Bizzi, E. (2005). Shared and specific muscle synergies in natural motor behaviors. *Proc. Natl. Acad. Sci.* 102, 3076–3081. doi: 10.1073/pnas.0500199102

d'Avella, A., and Pai, D. K. (2010). Modularity for sensorimotor control: evidence and a new prediction. *J. Mot. Behav.* 42, 361–369. doi: 10.1080/00222895.2010.526453

d'Avella, A., Saltiel, P., and Bizzi, E. (2003). Combinations of muscle synergies in the construction of a natural motor behavior. *Nat. Neurosci.* 6, 300–308. doi: 10.1038/nn1010

de Graaf-Peters, V. B., and Hadders-Algra, M. (2006). Ontogeny of the human central nervous system: what is happening when? *Early Hum. Dev.* 82, 257–266. doi: 10.1016/j.earlhumdev.2005.10.013

de Rugy, A., Loeb, G. E., and Carroll, T. J. (2012). Muscle coordination is habitual rather than optimal. *J. Neurosci.* 32, 7384–7391. doi: 10.1523/JNEUROSCI.5792-11.2012

Delis, I., Panzeri, S., Pozzo, T., and Berret, B. (2014). A unifying model of concurrent spatial and temporal modularity in muscle activity. *J. Neurophysiol.* 111, 675–693. doi: 10.1152/jn.00245.2013

Dhawale, A. K., Smith, M. A., and Ölveczky, B. P. (2017). The role of variability in motor learning. *Annu. Rev. Neurosci.* 40, 479–498. doi: 10.1146/annurev-neuro-072116-031548

Dominici, N., Ivanenko, Y. P., Cappellini, G., D'Avella, A., Mondì, V., Cicchese, M., et al. (2011). Locomotor primitives in newborn babies and their development. *Science* 334, 997–999. doi: 10.1126/science.1210617

Green, J. R., Moore, C. A., Ruark, J. L., Rodda, P. R., Morvée, W. T., and VanWitzenburg, M. J. (1997). Development of chewing in children from 12 to 48 months: longitudinal study of EMG patterns. *J. Neurophysiol.* 77, 2704–2716. doi: 10.1152/jn.1997.77.5.2704

Hadders-Algra, M. (2008). Reduced variability in motor behaviour: An indicator of impaired cerebral connectivity? *Early Hum. Dev.* 84, 787–789. doi: 10.1016/j.earlhumdev.2008.09.002

- Hadders-algra, M. (2018). Early human motor development: from variation to the ability to vary and adapt. *Neurosci. Biobehav. Rev.* 90, 411–427. doi: 10.1016/j.neubiorev.2018.05.009
- Hart, C. B., and Giszter, S. F. (2010). A neural basis for motor primitives in the spinal cord. *J. Neurosci.* 30, 1322–1336. doi: 10.1523/JNEUROSCI.5894-08.2010
- Hebb, D. (1949). *The Organization of Behavior*. New York: Wiley & Sons.
- Hinneken, E., Barbu-Roth, M., Do, M.-C., Berret, B., and Teulier, C. (2023). Generating variability from motor primitives during infant locomotor development. *elife* 12:87463. doi: 10.7554/eLife
- Hinneken, E., Berret, B., Do, M., and Teulier, C. (2020). Modularity underlying the performance of unusual locomotor tasks inspired by developmental milestones. *J. Neurophysiol.* 123, 496–510. doi: 10.1152/jn.00662.2019
- Hoyer, P. O. (2004). Non-negative matrix factorization with sparseness constraints. *J. Mach. Learn. Res.* 5, 1457–1469. doi: 10.48550/arXiv.cs/0408058
- Ivanenko, Y. P., Dominici, N., Cappellini, G., di Paolo, A., Giannini, C., Poppele, R. E., et al. (2013). Changes in the spinal segmental motor output for stepping during development from infant to adult. *J. Neurosci.* 33, 3025–3036. doi: 10.1523/JNEUROSCI.2722-12.2013
- Ivanenko, Y. P., Dominici, N., Cappellini, G., Lacquaniti, F., Yuri, P., Dominici, N., et al. (2005). Kinematics in newly walking toddlers does not depend upon postural stability. *J. Neurophysiol.* 94, 754–763. doi: 10.1152/jn.00088.2005
- Ivanenko, Y. P., Poppele, R. E., and Lacquaniti, F. (2004). Five basic muscle activation patterns account for muscle activity during human locomotion. *J. Physiol.* 556, 267–282. doi: 10.1113/jphysiol.2003.057174
- Jing, J., Cropper, E., Hurwitz, I., and Weiss, K. (2004). The construction of movement with behavior-specific and behavior-independent modules. *J. Neurosci.* 24, 6315–6325. doi: 10.1523/JNEUROSCI.0965-04.2004
- Kao, M. H., Wright, B. D., and Doupe, A. J. (2008). Neurons in a forebrain nucleus required for vocal plasticity rapidly switch between precise firing and variable bursting depending on social context. *J. Neurosci.* 28, 13232–13247. doi: 10.1523/JNEUROSCI.2250-08.2008
- Kerkman, J. N., Zandvoort, C. S., Daffertshofer, A., and Dominici, N. (2022). Body weight control is a key element of motor control for toddlers' walking. *Front Network Physiol* 2, 1–12. doi: 10.3389/fnetp.2022.844607
- Lacquaniti, F., Ivanenko, Y. P., and Zago, M. (2012a). Development of human locomotion. *Curr. Opin. Neurobiol.* 22, 822–828. doi: 10.1016/j.conb.2012.03.012
- Lacquaniti, F., Ivanenko, Y. P., and Zago, M. (2012b). Patterned control of human locomotion. *J. Physiol.* 590, 2189–2199. doi: 10.1113/jphysiol.2011.215137
- Lapeyre, M., Ly, O., Oudeyer, P., Lapeyre, M., Ly, O., Maturational, P. O., et al. (2011). Maturational constraints for motor learning in high-dimensions: the case of biped walking. In 2011 11th IEEE-RAS International Conference on Humanoid Robots, 707–714.
- Mandelblat-Cerf, Y., Paz, R., and Vaadia, E. (2009). Trial-to-trial variability of single cells in motor cortices is dynamically modified during visuomotor adaptation. *J. Neurosci.* 29, 15053–15062. doi: 10.1523/JNEUROSCI.3011-09.2009
- Mussa-Ivaldi, F. A., Giszter, S. F., and Bizzi, E. (1994). Linear combinations of primitives in vertebrate motor control. *Proc. Natl. Acad. Sci.* 91, 7534–7538. doi: 10.1073/pnas.91.16.7534
- Musselman, K. E., and Yang, J. F. (2008). Interlimb coordination in rhythmic leg movements: spontaneous and training-induced manifestations in human infants. *J. Neurophysiol.* 100, 2225–2234. doi: 10.1152/jn.90532.2008
- Nazifi, M. M., Yoon, H. U., Beschorner, K., and Hur, P. (2017). Shared and task-specific muscle synergies during Normal walking and slipping. *Front. Hum. Neurosci.* 11, 1–14. doi: 10.3389/fnhum.2017.00040
- Neptune, R. R., Clark, D. J., and Kautz, S. A. (2009). Modular control of human walking: a simulation study. *J. Biomech.* 42, 1282–1287. doi: 10.1016/j.jbiomech.2009.03.009
- O'Connor, C. M., Thorpe, S. K., O'Malley, M. J., and Vaughan, C. L. (2007). Automatic detection of gait events using kinematic data. *Gait Posture* 25, 469–474. doi: 10.1016/j.gaitpost.2006.05.016
- Ossmy, O., and Adolph, K. E. (2020). Real-time assembly of coordination patterns in human infants. *Curr. Biol.* 30, 4553–4562.e4. doi: 10.1016/j.cub.2020.08.073
- Overduin, S. A., d'Avella, A., Roh, J., Carmena, J. M., and Bizzi, E. (2015). Representation of muscle synergies in the primate brain. *J. Neurosci.* 35, 12615–12624. doi: 10.1523/JNEUROSCI.4302-14.2015
- Piek, J. P. (2002). The role of variability in early motor development. *Infant Behav. Dev.* 25, 452–465. doi: 10.1016/S0163-6383(02)00145-5
- Robinson, S. R., Kleven, G. A., and Brumley, M. R. (2008). Prenatal development of interlimb motor learning in the rat fetus. *Infancy* 13, 204–228. doi: 10.1080/15250000802004288
- Sutherland, D. (1997). The development of mature gait. *Gait Posture* 6, 163–170. doi: 10.1016/S0966-6362(97)00029-5
- Sylos-Labini, F., La Scaleia, V., Cappellini, G., Dewolf, A., Fabiano, A., Solopova, I. A., et al. (2022). Complexity of modular neuromuscular control increases and variability decreases during human locomotor development. *Commun Biol* 5:1256. doi: 10.1038/s42003-022-04225-8
- Sylos-labini, F., Scaleia, V.La, Cappellini, G., Fabiano, A., Picone, S., Keshishian, E. S., et al. (2020). Distinct locomotor precursors in newborn babies. *Proc. Natl. Acad. Sci.* 117, 9604–9612. doi: 10.1073/pnas.1920984117
- Teulier, C., Sansom, J. K., Muraszko, K., and Ulrich, B. D. (2012). Longitudinal changes in muscle activity during infants' treadmill stepping. *J. Neurophysiol.* 108, 853–862. doi: 10.1152/jn.01037.2011
- Torres-Oviedo, G., and Ting, L. H. (2010). Subject-specific muscle synergies in human balance control are consistent across different biomechanical contexts. *J. Neurophysiol.* 103, 3084–3098. doi: 10.1152/jn.00960.2009
- Ulrich, B. D. (2010). Opportunities for early intervention based on theory, basic neuroscience, and clinical science. *Phys. Ther.* 90, 1868–1880. doi: 10.2522/ptj.20100040
- Valero-Cuevas, F. J. (2009). "A mathematical approach to the mechanical capabilities of limbs and fingers" in *Progress in motor control*. ed. D. Sternad (Boston, MA: Springer), 619–633.
- Vinay, L., Brocard, F., Pflieger, J. F., Simeoni-Alias, J., and Clarac, F. (2000). Perinatal development of lumbar motoneurons and their inputs in the rat. *Brain Res. Bull.* 53, 635–647. doi: 10.1016/S0361-9230(00)00397-X
- Wu, H. G., Miyamoto, Y. R., Castro, L. N. G., Ölveczky, B. P., and Smith, M. A. (2014). Temporal structure of motor variability is dynamically regulated and predicts motor learning ability. *Nat. Neurosci.* 17, 312–321. doi: 10.1038/nn.3616
- Ziegler, M. D., Zhong, H., Roy, R. R., and Edgerton, V. R. (2010). Why variability facilitates spinal learning. *J. Neurosci.* 30, 10720–10726. doi: 10.1523/JNEUROSCI.1938-10.2010