



HAL
open science

Sub-second periodicity in a fast radio burst

Bridget Andersen, Kevin Bandura, Mohit Bhardwaj, P. Boyle, Charanjot Brar, Daniela Breitman, Tomas Cassanelli, Shami Chatterjee, Pragma Chawla, Jean-François Cliche, et al.

► **To cite this version:**

Bridget Andersen, Kevin Bandura, Mohit Bhardwaj, P. Boyle, Charanjot Brar, et al.. Sub-second periodicity in a fast radio burst. *Nature*, 2022, 607 (7918), pp.256-259. 10.1038/s41586-022-04841-8 . hal-04442832

HAL Id: hal-04442832

<https://hal.science/hal-04442832>

Submitted on 6 Feb 2024

HAL is a multi-disciplinary open access archive for the deposit and dissemination of scientific research documents, whether they are published or not. The documents may come from teaching and research institutions in France or abroad, or from public or private research centers.

L'archive ouverte pluridisciplinaire **HAL**, est destinée au dépôt et à la diffusion de documents scientifiques de niveau recherche, publiés ou non, émanant des établissements d'enseignement et de recherche français ou étrangers, des laboratoires publics ou privés.

Sub-second periodicity in a fast radio burst

The CHIME/FRB Collaboration: Bridget C. Andersen^{1,2}, Kevin Bandura^{3,4}, Mohit Bhardwaj^{1,2}, P. J. Boyle^{1,2}, Charanjot Brar^{1,2}, Daniela Breitman^{5,6,7}, Tomas Cassanelli^{6,7}, Shami Chatterjee⁸, Pragya Chawla^{1,2}, Jean-François Cliche^{1,2}, Davor Cubranic⁹, Alice P. Curtin^{1,2}, Meiling Deng^{10,11}, Matt Dobbs^{1,2}, Fengqiu Adam Dong⁹, Emmanuel Fonseca^{1,2}, B. M. Gaensler^{6,7}, Utkarsh Giri^{10,12}, Deborah C. Good⁹, Alex S. Hill^{13,11}, Alexander Josephy^{1,2}, J. F. Kaczmarek¹¹, Zarif Kader^{1,2}, Joseph Kania^{14,4}, Victoria M. Kaspi^{1,2}, Calvin Leung^{15,16}, D. Z. Li¹⁷, Hsiu-Hsien Lin^{18,19}, Kiyoshi W. Masui^{15,16}, Ryan Mckinven^{7,6}, Juan Mena-Parra¹⁵, Marcus Merryfield^{1,2}, B. W. Meyers⁹, D. Michilli^{1,2,15,16*}, Arun Naidu^{1,2}, Laura Newburgh²⁰, C. Ng⁶, Anna Ordog^{13,11}, Chitrang Patel^{1,6}, Aaron B. Pearlman^{1,2}, Ue-Li Pen^{18,19,21,6,10}, Emily Petroff^{1,2,22}, Ziggy Pleunis^{1,2}, Masoud Rafiei-Ravandi^{10,12}, Mubdi Rahman²³, Scott Ransom²⁴, Andre Renard⁶, Pranav Sanghavi^{3,4}, Paul Scholz⁶, J. Richard Shaw⁹, Kaitlyn Shin^{15,16}, Seth R. Siegel^{1,2}, Saurabh Singh^{1,2}, Kendrick Smith¹⁰, Ingrid Stairs⁹, Chia Min Tan^{1,2}, Shriharsh P. Tendulkar^{25,26}, Keith Vanderlinde^{6,7}, D. V. Wiebe⁹, Dallas Wulf^{1,2}, Andrew Zwaniga^{1,2}

* Corresponding author: Daniele Michilli. E-mail: danielmichilli@gmail.com

¹Department of Physics, McGill University, 3600 rue University, Montréal, QC H3A 2T8, Canada

²McGill Space Institute, McGill University, 3550 rue University, Montréal, QC H3A 2A7, Canada

³Lane Department of Computer Science and Electrical Engineering, 1220 Evansdale Drive, PO Box 6109, Morgantown, WV 26506, USA

⁴Center for Gravitational Waves and Cosmology, West Virginia University, Chestnut Ridge Research Building, Morgantown, WV 26505, USA

⁵Department of Physics, University of Toronto, 60 St. George Street, Toronto, ON M5S 1A7, Canada

⁶Dunlap Institute for Astronomy & Astrophysics, University of Toronto, 50 St. George Street, Toronto, ON M5S 3H4, Canada

⁷David A. Dunlap Department of Astronomy & Astrophysics, University of Toronto, 50 St. George Street, Toronto, ON M5S 3H4, Canada

⁸Cornell Center for Astrophysics and Planetary Science, Cornell University, Ithaca, NY 14853, USA

⁹Department of Physics and Astronomy, University of British Columbia, 6224 Agricultural Road, Vancouver, BC V6T 1Z1 Canada

¹⁰Perimeter Institute for Theoretical Physics, 31 Caroline Street N, Waterloo, ON N2S 2YL, Canada

¹¹Dominion Radio Astrophysical Observatory, Herzberg Research Centre for Astronomy and Astrophysics, National Research Council Canada, PO Box 248, Penticton, BC V2A 6J9, Canada

¹²Department of Physics and Astronomy, University of Waterloo, Waterloo, ON N2L 3G1, Canada

¹³Department of Computer Science, Math, Physics, & Statistics, University of British Columbia, Okanagan Campus, Kelowna, BC V1V 1V7, Canada

¹⁴Department of Physics and Astronomy, West Virginia University, PO Box 6315, Morgantown, WV 26506, USA

¹⁵MIT Kavli Institute for Astrophysics and Space Research, Massachusetts Institute of Technology, 77 Massachusetts Ave, Cambridge, MA 02139, USA

¹⁶Department of Physics, Massachusetts Institute of Technology, 77 Massachusetts Ave, Cambridge, MA 02139, USA

¹⁷Cahill Center for Astronomy and Astrophysics, California Institute of Technology, 1216 E California Boulevard, Pasadena, CA 91125, USA

¹⁸Institute of Astronomy and Astrophysics, Academia Sinica, Astronomy-Mathematics Building, No. 1, Sec. 4, Roosevelt Road, Taipei 10617, Taiwan

¹⁹Canadian Institute for Theoretical Astrophysics, 60 St. George Street, Toronto, ON M5S 3H8, Canada

²⁰Department of Physics, Yale University, New Haven, CT 06520, USA

²¹Canadian Institute for Advanced Research, MaRS Centre, West Tower, 661 University Ave, Suite 505, Toronto, ON, M5G 1M1 Canada

²²Anton Pannekoek Institute for Astronomy, University of Amsterdam, Science Park 904, 1098 XH Amsterdam, The Netherlands

²³Sidrat Research, PO Box 73527 RPO Wychwood, Toronto, ON M6C 4A7, Canada

²⁴National Radio Astronomy Observatory, 520 Edgemont Rd, Charlottesville, VA 22903, USA

²⁵Department of Astronomy and Astrophysics, Tata Institute of Fundamental Research, Mumbai, 400005, India

²⁶National Centre for Radio Astrophysics, Post Bag 3, Ganeshkhind, Pune, 411007, India

Fast radio bursts (FRBs) are millisecond-duration flashes of radio waves that are visible at distances of billions of light-years.¹ The nature of their progenitors and their emission mechanism remain open astrophysical questions.² Here we report the detection of the multi-component FRB 20191221A and the identification of a periodic separation of 216.8(1) ms between its components with a significance of 6.5σ . The long (~ 3 s) duration and nine or more components forming the pulse profile make this source an outlier in the FRB population. Such short periodicity provides strong evidence for a neutron-star origin of the event. Moreover, our detection favours emission arising from the neutron-star magnetosphere,^{3,4} as opposed to emission regions located further away from the star, as predicted by some models.⁵

Operating on the Canadian Hydrogen Intensity Mapping Experiment (CHIME), CHIME/FRB⁶ is an ongoing experiment to find and study a large number⁷ of FRBs. CHIME is a cylindrical North-South oriented transit radio interferometer observing in the 400–800-MHz range. Upon detection of an FRB, the so-called *intensity* data, i.e. the total intensity of the signal as a function of time and frequency, are stored. Additionally, channelized complex voltages (referred to as *baseband* data) with full polarisation information are stored for a subset of FRBs (see Methods).

In fewer than 0.5% of the events detected by CHIME/FRB, five or more separate components are visible in the pulse profiles⁷ obtained by summing all frequency channels of an intensity dataset after correcting for the effects of the dispersion measure (DM). Particularly striking is FRB 20191221A, with a total duration of roughly three seconds and at least nine overlapping components (Figure 1 and Table 1). No other FRB candidate observed by CHIME/FRB contains a comparable or greater number of sub-components. Since the detection pipeline of CHIME/FRB is not optimized to find bursts longer than 128 ms, it is possible that some events with comparable duration eluded detection. However, FRB 20191221A was identified using the individual peaks in its profile. Therefore, we expect the fraction of missed long-duration events to be small if single peaks can be identified in their pulse profiles. A detailed analysis of the

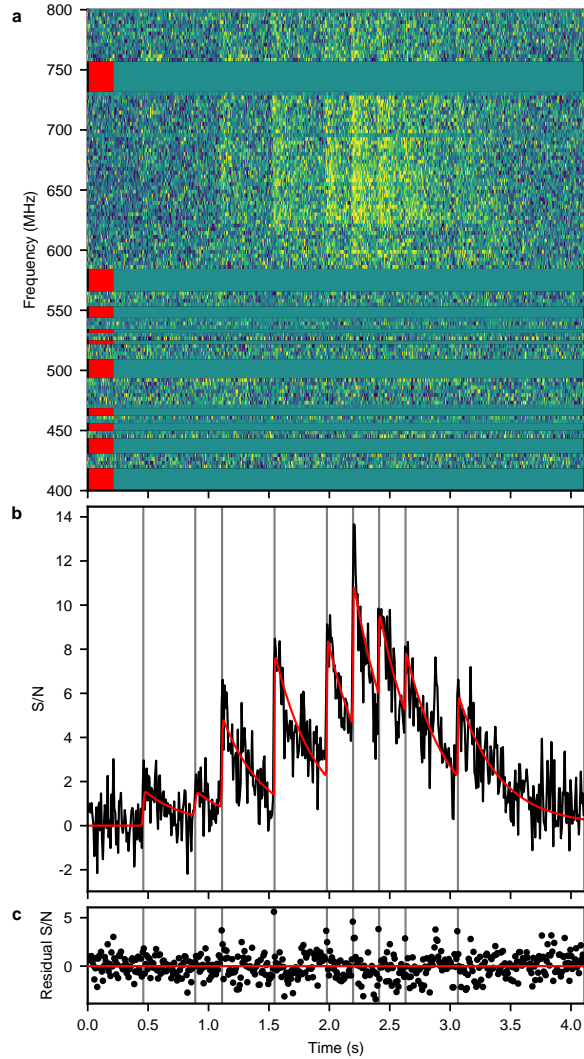


Figure 1: **Radio signal from FRB 20191221A.** **a**, Waterfall plot of the signal intensity (colour-coded) as a function of time and frequency. Frequency channels missing or masked due to radio frequency interference are replaced with off-burst median values and are indicated in red. Effects of dispersion have been removed, and data have been averaged to 3.125 MHz frequency resolution and to 7.86432 ms time resolution. **b**, In black, the pulse profile obtained by averaging the frequency channels of the waterfall plot where signal is visible. The Gaussian function convolved with an exponential used to model nine peaks in the profile is plotted in red, and peak locations are highlighted by vertical lines. **c**, Residuals of the fit, with a red horizontal line at zero residual.

Parameter	20191221A
MJD*	58838.20638077, 58838.20630684
RA* J2000 (deg)	44.6(1), 38.4(2)
Dec* J2000 (deg)	79.74(2), 79.73(3)
l^* (deg)	128.60(2), 127.56(4)
b^* (deg)	18.30(2), 17.78(3)
DM (pc cm ⁻³)	368(6)
Period (ms)	216.8(1)
Period significance (σ)	6.5
Average width (ms)	4(1)
Scattering (ms)	340(10)
Fluence [†] (Jy ms)	$1.2(4) \times 10^3$
Peak Flux [†] (Jy)	2.0(1.0)
Exposure [‡] (hours)	340.1(2), 106(4)

* Two localization regions are equally probable and both positions are reported.

† These are lower limits as detailed in the Methods.

‡ For circumpolar sources ($\delta > +70^\circ$), the two entries correspond to exposure in the upper and lower transit, respectively.

Table 1: Properties of FRB 20191221A. Uncertainties are reported at 1- σ confidence level. The arrival time is that of the brightest sub-burst at the Solar System’s barycentre and infinite frequency. The DM is calculated to maximize the peak S/N in the timeseries. The scattering timescale is referenced to the centre of the band, i.e. ~ 600 MHz. Fluence is for the full band-averaged profile, and peak flux is the maximum in the profile (with 1-ms time resolution).

completeness of the CHIME/FRB search pipeline has been presented elsewhere.⁷

Significant peaks are visible in the power spectrum of FRB 20191221A obtained by performing a Fast Fourier Transform (FFT) on its pulse profile (Figure 2), indicating a possible periodicity in the times of arrival (ToAs) of single components of the pulse profile. To confirm this, individual sub-components have been fitted with a Gaussian function convolved with a single exponential to account for scattering, a pulse broadening caused by the propagation of the radio waves in turbulent plasma.⁸ The resulting ToAs have been used to perform a timing analysis around the initial period derived from the power spectra. A simple timing model with two free parameters, a period and an arbitrary overall phase, have been fitted to the data. The

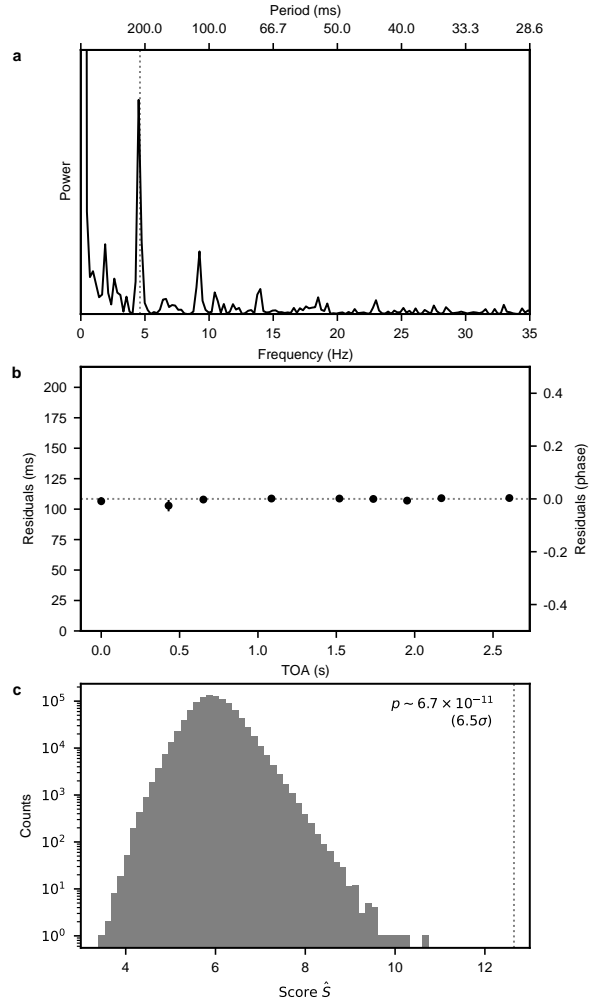


Figure 2: **Periodicity analysis of FRB 20191221A.** **a**, Power spectrum obtained with a discrete Fourier Transform of the pulse profile. The vertical dotted line indicates a period $P = 216.8$ ms. **b**, Residuals of a timing analysis assuming that the peaks forming the FRB profile are separated by integer numbers times a period $P = 216.8$ ms. $1\text{-}\sigma$ error bars are often smaller than the symbol size. The horizontal dotted line indicates a phase of zero around which residuals have been rotated. **c**, Study of the statistical significance of the measured periodicity by using a periodicity-sensitive score \hat{S} described in the Methods. The grey histogram has been obtained with an ensemble of simulations, whereas the value measured for the FRB is represented with a vertical dotted line. The corresponding probability of obtaining such a periodicity by chance is indicated on the plot.

fit residuals are shown in Figure 2 and the period is reported in Table 1. A comparison of the residuals with a straight line, expected for a perfectly periodic source, yields $\chi_{\text{red}}^2 = 1.09$, indicating that the signal does not deviate significantly from a strict periodicity. We calculated the significance of the periodicity both by simulating a distribution of random ToAs and by using a Rayleigh periodicity analysis, as described in the Methods. The spurious detection probability calculated for the 216.8(1)-ms period of FRB 20191221A is 6.7×10^{-11} . Therefore, the periodicity is robust with high confidence.

We found two other notable sources, FRBs 20210206A and 20210213A, that are formed by five and six components and show possible periodicities of 2.8(1) and 10.7(1) ms, respectively. However, the spurious detection probabilities of 0.2 and 0.02 measured for their periodicities do not allow us to exclude a chance coincidence. Therefore, we do not use them in our analysis but we present them in the Methods. From this sample, it is unclear whether FRBs with periodic components may represent a separate and rare class or whether a larger number of FRBs would show periodic behaviours if sufficiently many components were detected.

Millisecond to second periodicities may suggest that the bursts are generated by Galactic radio pulsars that have been misidentified as extragalactic. However, FRB 20191221A has a measured DM ~ 4 times larger than the maximum value expected by models of the Milky Way electron content.^{9,10} We searched for evidence of ionized^{11,12} or star-forming¹³ regions in the direction of the FRB that could account for the excess DM but found none. We conclude that the source is likely extragalactic.

No additional bursts have been detected from FRB 20191221A up to March 10th, 2021 above an S/N of 9 at a position consistent within $\Delta\text{RA} = 2.2 \text{ deg } \cos^{-1}(\text{Dec})$ and $\Delta\text{Dec} = 1 \text{ deg}$ of these three sources using an algorithm built on a density-based spatial clustering of applications with noise (DBSCAN).¹⁴ The nominal DM range threshold for the clustering was set to 13 pc cm^{-3} , corresponding to the largest DM uncertainty in the real-time pipeline of CHIME/FRB.⁶ CHIME/FRB continues to monitor the sky location of these FRBs daily for possible additional bursts.

Multi-component bursts that are associated with repeating sources of FRBs often exhibit downward-drifting subbursts,¹⁵ however, all of the components forming FRB 20191221A show a similar spectrum. This is visible in $\sim 5\%$ of the FRB population detected by CHIME/FRB.¹⁶ It must be noted that the spectrum of FRB 20191221A is affected by the telescope response, mainly due to the detection at a location offset from the centre of a formed beam, which produces strong bandpass effects (see Methods).¹⁷

Our modeling of the pulse profile of FRB 20191221A, visible in Fig. 1 and described in detail in the Methods, shows that its single components have a relatively narrow width of 4(1) ms on average, even though they overlap due to an extreme scattering timescale $\tau_s = 340(10)$ ms at 600 MHz. Although this estimate may be affected by unresolved features in the profile mimicking an exponential decay, it is clear that the FRB emission experienced strong scattering, significantly in excess of the Galactic contribution expected given its sky position,⁹ pointing to propagation through a turbulent plasma. The pulse width corrected for the pulse broadening corresponds to a duty cycle of $\sim 1.8\%$, consistent with Galactic radio pulsars.¹⁸ It is worth noting that all of the emission from this FRB is consistent with single components overlapping due to the large scattering and no envelope of emission is required in our fit, whose residuals are consistent with noise, as is visible in Fig. 1.

Leading theories for the origin of FRBs are related to magnetars^{2,19,20} and are divided into models where the emission is either generated in the star's magnetosphere or triggered in plasma regions by a flare of the star. The detection of periodicity is naturally explained by the first class of magnetar models, and it has been extensively observed in Galactic neutron stars, albeit with orders of magnitude lower luminosities.^{18,21} By contrast, the second class of models does not necessarily predict a millisecond modulation in the emitted signal.⁵

The periodic structures in the bursts could be explained by a rotating neutron star with beamed emission similar to Galactic radio pulsars where, for an unknown reason, a train of single pulses has an abnormally high luminosity for a short period of time. The period and jitter in the ToAs observed for FRB 20191221A are compatible with those seen in Galactic

pulsars.¹⁸ Alternatively, bright radio pulsars and magnetars sometimes show micro-structures in some of their single pulses with profiles that are similar to those of the FRBs reported on here^{22,23} and quasi-periodic separations²⁴ in some cases. However, it was shown that the ToAs of single components of FRB 20191221A do not deviate significantly from a strict periodicity. Also, if these components are structures forming a single pulse, its width would be ~ 4 times larger than the widest component ever observed in a radio pulsar.¹⁸ Finally, as opposed to typical micro-structures seen in pulsars, the components do not require an envelope of emission.

Recent theories have also predicted the detection of periodicity in FRB sub-bursts if magnetar crustal oscillation frequencies can be directly related to oscillation modes on the surface of the magnetar during outburst,^{4,25}. A periodicity of 216.8 ms corresponds to a surface oscillation frequency of 4.6 Hz, within the range observed previously in Galactic magnetars.²⁶

One unlikely scenario to explain the larger radio luminosity of the FRB compared to Galactic sources is that it may represent the observation of a gravitationally micro-lensed extragalactic pulsar. Alternatively, the single components of periodic FRBs could be generated by the magnetospheric interaction of merging neutron stars. These possibilities are explored in the Methods, along with suggested tests of these models. In the meantime, CHIME/FRB is continuing to detect hundreds of FRBs, which should allow for additional periodicities to be detected in the near future.

1. Lorimer, D. R., Bailes, M., McLaughlin, M. A., Narkevic, D. J. & Crawford, F. A Bright Millisecond Radio Burst of Extragalactic Origin. *Science* **318**, 777 (2007).
2. Platts, E. *et al.* A living theory catalogue for fast radio bursts. *Physics Reports* **821**, 1–27 (2019).
3. Popov, S. B. & Postnov, K. A. *Hyperflares of SGRs as an engine for millisecond extragalactic radio bursts* in *Evolution of Cosmic Objects through their Physical Activity* (eds Harutyunian, H. A., Mickaelian, A. M. & Terzian, Y.) (2010), 129–132.

4. Lu, W., Kumar, P. & Zhang, B. A unified picture of Galactic and cosmological fast radio bursts. *Mon. Not. R. Astron. Soc.* **498**, 1397–1405 (2020).
5. Metzger, B. D., Margalit, B. & Sironi, L. Fast radio bursts as synchrotron maser emission from decelerating relativistic blast waves. *Mon. Not. R. Astron. Soc.* **485**, 4091–4106 (2019).
6. CHIME/FRB Collaboration *et al.* The CHIME Fast Radio Burst Project: System Overview. *Astrophys. J.* **863**, 48 (2018).
7. CHIME/FRB Collaboration *et al.* The First CHIME/FRB Fast Radio Burst Catalog. *Astrophys. J. Suppl.* **257**, 59 (2021).
8. Rickett, B. J. Radio propagation through the turbulent interstellar plasma. *Ann. Rev. Astron. & Astrophys.* **28**, 561–605 (1990).
9. Cordes, J. M. & Lazio, T. J. W. NE2001. I. A new model for the galactic distribution of free electrons and its fluctuations. *arXiv preprint astro-ph/0207156* (2002).
10. Yao, J. M., Manchester, R. N. & Wang, N. A New Electron-density Model for Estimation of Pulsar and FRB Distances. *Astrophys. J.* **835**, 29 (2017).
11. Anderson, L. D. *et al.* The WISE catalog of galactic H II regions. *The Astrophysical Journal Supplement Series* **212**, 1 (2014).
12. Green, D. A revised catalogue of 294 Galactic supernova remnants. *Journal of Astrophysics and Astronomy* **40**, 36 (2019).
13. Avedisova, V. A catalog of star-forming regions in the galaxy. *Astronomy Reports* **46**, 193–205 (2002).
14. Dong, F. *Finding new pulsars using CHIME/FRB single pulse events* MA thesis (University of British Columbia, 2021). <https://open.library.ubc.ca/collections/ubctheses/24/items/1.0396957>.
15. Hessels, J. W. T. *et al.* FRB 121102 Bursts Show Complex Time-Frequency Structure. *Astrophys. J. Letters* **876**, L23 (2019).
16. Pleunis, Z. *et al.* Fast Radio Burst Morphology in the First CHIME/FRB Catalog. *Astrophys. J.* **923**, 1 (2021).

17. CHIME/FRB Collaboration *et al.* Observations of fast radio bursts at frequencies down to 400 megahertz. *Nature* **566**, 230–234 (2019).
18. Manchester, R. N., Hobbs, G. B., Teoh, A. & Hobbs, M. The Australia Telescope National Facility Pulsar Catalogue. *Astron. J.* **129**, 1993–2006 (2005).
19. CHIME/FRB Collaboration *et al.* A bright millisecond-duration radio burst from a Galactic magnetar. *Nature* **587**, 54–58 (2020).
20. Bochenek, C. D. *et al.* A fast radio burst associated with a Galactic magnetar. *Nature* **587**, 59–62 (2020).
21. Camilo, F. *et al.* Transient pulsed radio emission from a magnetar. *Nature* **442**, 892–895 (2006).
22. Craft, H. D., Comella, J. M. & Drake, F. D. Submillisecond Radio Intensity Variations in Pulsars. *Nature* **218**, 1122–1124 (1968).
23. Pearlman, A. B., Majid, W. A., Prince, T. A., Kocz, J. & Horiuchi, S. Pulse Morphology of the Galactic Center Magnetar PSR J1745-2900. *Astrophys. J.* **866**, 160 (2018).
24. Hankins, T. H. Microsecond Intensity Variation in the Radio Emission from CP 0950. *Astrophys. J.* **169**, 487–494 (1971).
25. Wadiasingh, Z. & Chirenti, C. Fast Radio Burst Trains from Magnetar Oscillations. *Astrophys. J. Letters* **903**, L38 (2020).
26. Huppenkothen, D. *et al.* Quasi-periodic Oscillations in Short Recurring Bursts of the Soft Gamma Repeater J1550-5418. *Astrophys. J.* **787**, 128 (2014).

Methods

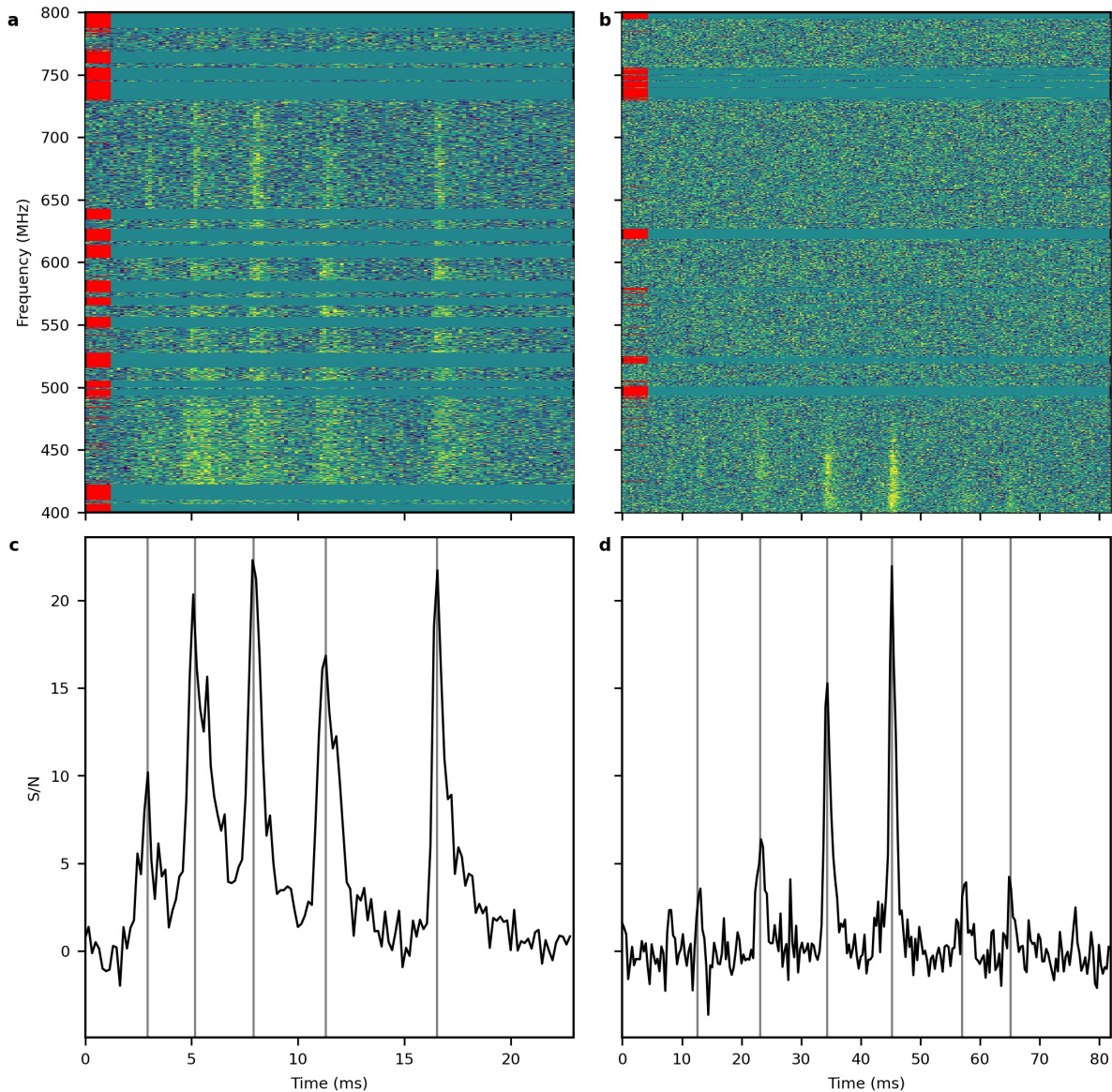
CHIME/FRB sensitivity beams

The CHIME radio telescope is a transit interferometer formed by 1024 dual-polarisation antennas observing in the 400-800 MHz range. The field of view of single antennas summed together incoherently is defined as the primary beam of the telescope, whose FWHM sensitivity spans ~ 110 degrees in the N-S direction and 1.3 (2.5) degrees the E-W direction at the top (bottom) of the observing bandwidth.⁶ The telescope antennas can be added coherently to produce a *formed* (or *synthesized*) beam in one or more directions and increase the telescope sensitivity towards those directions. Formed beams have a size between ~ 0.3 and 0.7 degrees, depending on the observing frequency and zenith angle.⁶ Therefore, their sensitivity and bandpass vary spatially more rapidly than those of the primary beam.

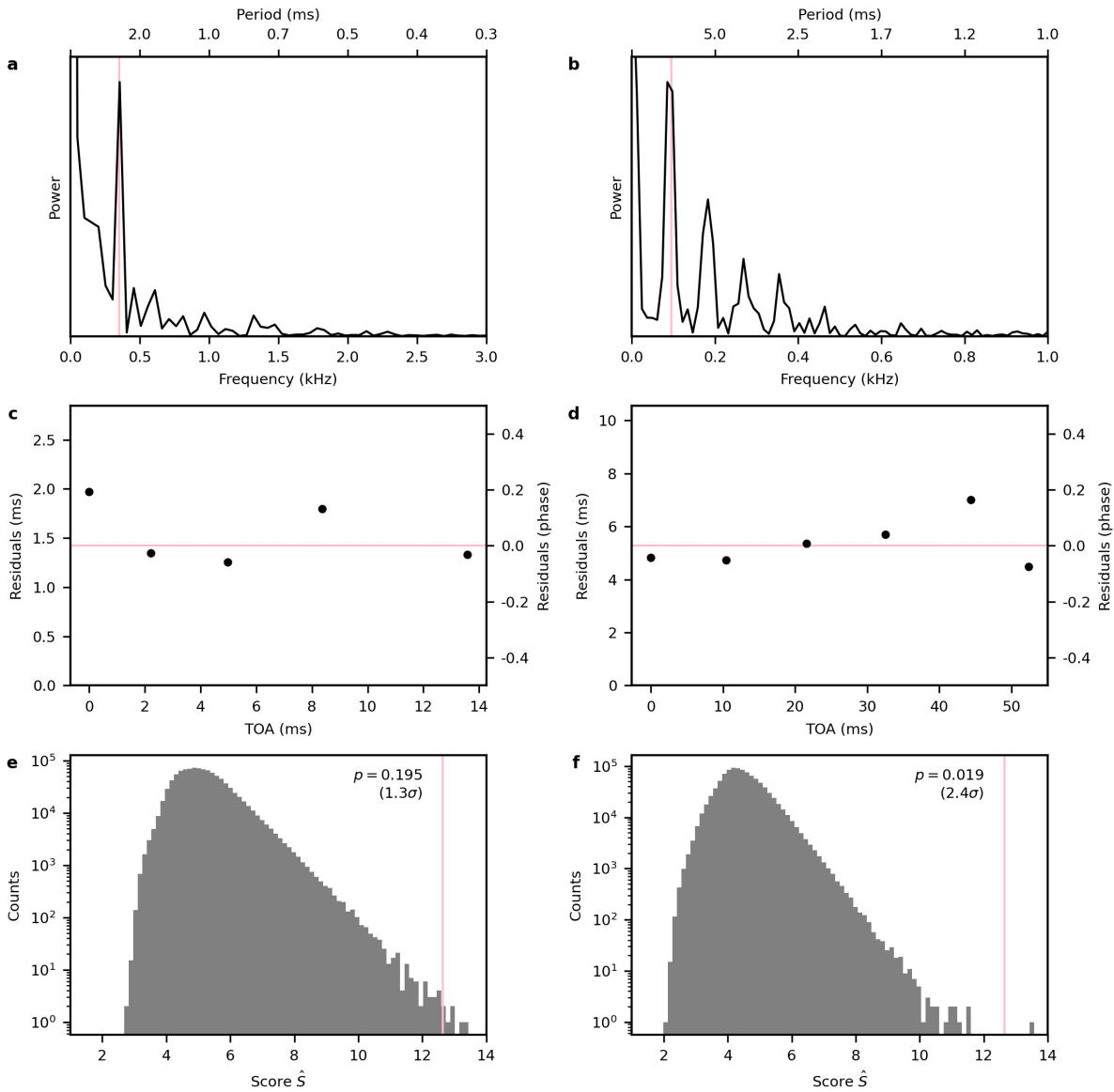
In the real-time search for FRBs, 1024 beams are formed on the sky within the primary beam via an FFT (FFT beams).²⁷ The total intensity measured by these FFT beams as a function of time and frequency is referred to as *intensity* data. Intensity data have a time resolution of 0.98304 ms and are divided into 16,384 channels. Additionally, for a part of the detected FRBs, ~ 100 ms of *baseband* complex voltages are also stored.⁶ The baseband data have a time resolution of 2.56 μ s, are divided into 1024 frequency channels and contain full polarisation information. Thanks to the phase information available in baseband data, synthesized beams can be formed to virtually any position on the sky within the telescope's field of view.²⁸

Sources of interest

We initially identified FRB 20191221A as an interesting source due to the number of peaks in its pulse profile. Only intensity data was stored for this source. We then visually inspected the sample of events detected by CHIME/FRB for other similar sources. We found none with comparable characteristics and the closest for number of components were found to be FRBs 20210206A and 20210213A (Extended Data Fig. 1). We repeated the timing analysis previously



Extended Data Figure 1: **Radio signal from FRBs 20210206A (a, c) and 20210213A (b, d).** **a, b**, Waterfall plots of the signal intensity (colour-coded) as a function of time and frequency. Frequency channels missing or masked due to radio frequency interference are replaced with off-burst median values and are indicated in red. Effects of dispersion have been removed, and data have been plotted at the native frequency resolution of 390.625 kHz and at a time resolution of 0.16 and 0.32 ms, respectively. **c, d**, in black, the pulse profiles obtained by averaging the frequency channels of the waterfall plots where signal is visible. Peak locations are highlighted by vertical lines.



Extended Data Figure 2: **Periodicity analysis of FRBs 20210206A (a, c, e) and 20210213A (b, d, f).** **a, b**, Power spectrum obtained with a discrete Fourier Transform of the pulse profile. Vertical pink lines indicate the periods reported in Extended Data Table 1. **c, d**, Residuals of a timing analysis assuming that the peaks forming the FRB profile are separated by integer numbers times these periods, respectively. $1\text{-}\sigma$ error bars are often smaller than the symbol sizes. Horizontal pink lines indicate a phase of zero around which residuals have been rotated. **e, f**, Study of the statistical significance of the measured periodicity by using the periodicity-sensitive score \hat{S} . The grey histograms have been obtained with an ensemble of simulations, whereas the value measured for each FRB is represented with a vertical pink line. The corresponding probability of obtaining such a periodicity by chance is indicated on the plots.

performed for FRB 20191221A. The results are summarised in Extended Data Fig. 2. FRBs 20210206A is formed by 5 separate components whose inferred period of 2.8(1) ms has a spurious detection probability as high as 0.2, making it uncertain at best. FRB 20210206A is formed by 6 separate components whose inferred period of 10.7(1) ms has a spurious detection probability of 0.02, higher than the previous source but still not conclusive. For this reason, and given the large jitter of the timing residuals visible in Extended Data Fig. 2, we consider the periodicities detected in these two bursts to be only suggestive and we did not use them in our analysis. However, these FRBs demonstrate the existence of a broad distribution in the number of components in burst profiles, with some sources showing possible periodic separations. Hints of shorter periodic separations of ~ 0.3 , ~ 2.3 , and $\sim 415 \mu\text{s}$ in the components of other FRBs have also been recently presented.^{29–31}

Periodicities of 16.3 and 157 days in the activity levels of two FRBs have been previously reported.^{32,33} However, these periodicities do not represent an actual time delay between subsequent bursts. This, and the very different timescales, argue that the two phenomena are unrelated.

Both intensity and baseband data are available for FRBs 20210206A and 20210213A. This allowed us to localize the sources with sufficient precision to form beams in these directions and, therefore, limit the effect of their bandpass.²⁸ Therefore, the lack of emission above ~ 500 MHz seen for FRB 20210213A is astrophysical. The DM of FRB 20210213A is ~ 10 times the expected Galactic contribution corresponding to an estimated redshift of $z \sim 0.4$.³⁴ FRB 20210206A, located at a Galactic latitude $b = -2.5$ deg, has a DM ~ 1.5 times larger than the Galactic contribution, placing it at a supposed redshift $z \sim 0.1$ but with the caveat that its extragalactic nature is less certain given the larger uncertainty of models at low latitudes.³⁵ As opposed to FRB 20191221A, FRBs 20210206A and 20210213A show narrower widths and shorter scattering timescales (see Extended Data Table 1) typical of the FRB population.¹⁶ The baseband data also allowed us to study the polarisation properties of FRBs 20210206A and 20210213A. A rotation measure $\text{RM} = +193.6(1) \text{ rad m}^{-2}$ has been mea-

Parameter	20210206A	20210213A
MJD	59251.11021004	59258.46924637
RA J2000 (deg)	53.86(2)	192.6(1)
Dec J2000 (deg)	52.743(7)	83.28(2)
l (deg)	146.359(9)	122.97(2)
b (deg)	-2.503(8)	33.85(2)
DM (pc cm ⁻³)	361.35(7)	482.5(2)
Period (ms)	2.8(1)	10.7(1)
Period significance (σ)	1.3	2.4
Average width (ms)	0.068(5)	0.42(4)
Scattering (ms)	1.25(2)	0.78(5)
Fluence (Jy ms)	47(14)	8.4(2.9)
Peak Flux (Jy)	5.7(1.8)	1.2(5)
Exposure* (hours)	99.2(1)	196(4), 496.7(2)

* For circumpolar sources ($\delta > +70^\circ$), the two entries correspond to exposure in the upper and lower transit, respectively.

Extended Data Table 1: **Properties of FRBs 20210206A and 20210213A.** All quantities have been calculated with baseband data except for fluences and fluxes. Uncertainties are reported at 1- σ confidence level. The arrival time is that of the brightest sub-burst at the Solar System's barycentre and infinite frequency. The DM is calculated to maximize the peak S/N in the timeseries. The scattering timescale is referenced to the centre of the band, i.e. ~ 600 MHz. Fluence is for the full band-averaged profile, and peak flux is the maximum in the profile (with 1-ms time resolution).

sured for FRB 20210206A, suggesting a significant extragalactic contribution. On the other hand, FRB 20210213A appears to be unpolarised. Possible reasons for this are discussed in the following, together with a detailed description of the polarisation analysis.

Properties of the bursts

To localize an FRB with CHIME/FRB intensity data, we fit the spectra of the burst detected in different FFT beams with a model of the CHIME/FRB beams and an underlying burst spectrum using a Markov chain Monte Carlo (MCMC) method.³⁶ The model of the CHIME/FRB beams contains a description of both the synthesized^{27,37} and primary⁷ beams and the underlying spectrum is modeled as a Gaussian. The free parameters are therefore width, mean, and amplitude of the underlying Gaussian model spectrum, along with the sky position. We use a flat prior on the position of the event that spans 5° to either side of meridian in E-W, while in N-S the prior spans the extent of the beams that detected the event. The position and uncertainties are derived from the 2D posterior distribution (in ‘x’, the E-W coordinate, and ‘y’, the N-S coordinate) marginalized over the parameters of the Gaussian spectral model. Since FRB 20191221A did not have baseband data available, the position reported in Table 1 is derived from the intensity localization described in the present section. The posterior probability distribution is double-peaked in the E-W direction and so two positions are reported for the event.

A detailed description of the algorithm used to obtain the sky position of FRBs by using baseband data has been presented elsewhere.²⁸ In summary, a grid of partially overlapping beams is produced around the intensity localization and a total S/N value is calculated in each beam. The resulting intensity map of the signal is fitted with a mathematical model describing the telescope response to determine the source position. The localization and its uncertainties have been calibrated with a sample of sources with a known position to account for any unmodelled systematics.²⁸

Flux and fluence calculations are determined using the intensity data for each burst with the

same method presented in previous CHIME/FRB papers.^{17,32,38–41} In summary, meridian transits of steady sources with known spectra are used to sample the conversion between beamformer units and Janskys as a function of frequency across the N-S extent of the primary beam. For each burst, the beamformer to Jansky conversion closest in zenith angle (assuming N-S symmetry) is applied to the intensity data to obtain a dynamic spectrum in physical units roughly corrected for N-S primary beam variations. Fluence values are obtained from integrating the burst extent in the band-averaged time series, and peak flux values are taken to be the maximum value within the burst extent (at 0.98304 ms resolution). Uncertainties are estimated using steady source observations. The calibration procedure described above does not correct for burst attenuation due to the synthesized beam pattern and E-W primary beam profile. Fluences and fluxes derived from this method are best interpreted as lower limits, with an uncertainty on the limiting value. This is what we report in Table 1 for FRB 20191221A. However, for bursts that have a baseband localization, we can achieve more realistic fluence results by using the beam model to scale between the location of the calibrator at the time of transit and the location of each FRB. This is what we report in Extended Data Table 1 for FRBs 20210206A and 20210213A.

The exposure of the CHIME/FRB system to the sources reported in this work was determined for the interval from August 28, 2018 to March 1, 2021. For each source, the exposure is calculated by summing the duration of daily transits across the FWHM region of the synthesized beams at 600 MHz. Two of the three sources, having declinations $> +70^\circ$, transit through the primary beam twice per day. These sources have their upper and lower transit exposures calculated separately as the beam response for the two transits is different. While calculating the total exposure, we include daily transits for which the CHIME/FRB detection pipeline was fully operational, which is determined using recorded system metrics. Transits occurring on days when the detection pipeline was being tested or upgraded are not included. Additionally, system sensitivity varies on a day-to-day basis due to daily gain calibration as well as changes in the detection pipeline and the RFI environment. We evaluate the variation in sensitivity for each sidereal day using observations of 120 Galactic pulsars with the CHIME/FRB system.^{39,41}

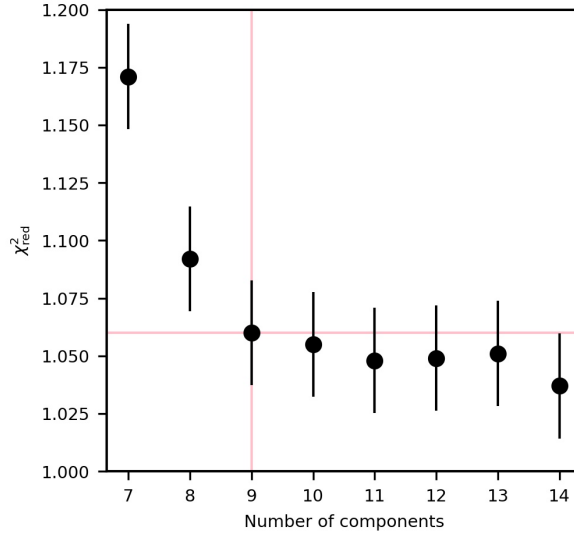
For each source, transits for which the sensitivity varied by more than 10% from the median in the aforementioned observing interval are excised from the total exposure. On average, the observing time corresponding to the excised transits amounted to 4% of the exposure for each source. The uncertainty in the source declination is a source of error in the measurement of the exposure. The source declination dictates where the transit path cuts across a synthesized beam with the transit duration being maximum if the path crosses the beam centre and zero if the path lies between two beams.⁴⁰ We estimate the resulting uncertainty in the exposure by generating a uniform grid of positions within the 68% confidence localization region for each source. The reported exposure in Table 1 and Extended Data Table 1 is the average for these sky positions with the error corresponding to the standard deviation.

Modeling of pulse profiles

FRB 20191221A is composed of multiple peaks overlapping due to a large broadening caused by scattering. To properly calculate the periodic separation among its components, it is important to avoid human bias in selecting significant peaks in the pulse profile. We reduced human bias in the following way. First, we smoothed the pulse profile using the Savitzky-Golay filter as implemented in `SciPy`.¹ The filter requires two input parameters, the window length, and the polynomial order. We explored the space of the two parameters up to a window of 600 ms and a polynomial order of 12. For each combination, separate peaks in the smoothed pulse profiles were identified from local maxima if the peaks were wider than 3 bins to avoid noise spikes.

We grouped together different combinations of parameters yielding the same number of peaks, noting their location in the profile and excluding values lower than 7 and higher than 14 peaks as visually implausible. For each value of the peak number between 7 and 14, the different peak locations resulting from each of the initial parameter combinations were grouped with a kernel density estimator, varying its window until we obtain the expected number of peaks. We apply this method to obtain seven combinations of initial peak positions composed of 7 to 14

¹<https://scipy.org/>



Extended Data Figure 3: **Reduced chi-square test as a function of the number of components used to model the profile of FRB 20191221A.** The vertical line highlights the chosen number of components, while the horizontal line is placed at the χ^2_{red} value for 9 components. The minimum χ^2_{red} variation that can be measured confidently with our data is estimated with Eq. 2 and plotted as an error bar for each number of peaks.

peaks. We model each peak using the exponentially modified Gaussian (EMG) described by^{7,42}

$$f(t; \mu, w, \tau) = \frac{A}{2\tau} \exp\left(\frac{\mu - t}{\tau} + \frac{2\sigma^2}{\tau^2}\right) \text{erfc}\left(\frac{(\mu - t)\tau + w^2}{w\tau\sqrt{2}}\right), \quad (1)$$

where erfc is the complementary error function, A is the signal amplitude, μ and w are the Gaussian mean and width, respectively, and τ is the scattering timescale. For each number of peaks, the pulse profile is modelled with a sum of one EMG function per peak through an MCMC sampling using `emcee`³⁶ with wide uniform priors for all parameters. The scattering timescale is set to be the same for all peaks, while the other parameters are allowed to vary. The resulting χ^2_{red} values, presented in Extended Data Figure 3, are used to select the number of peaks yielding the best model. We estimate the minimum variation in the χ^2_{red} value that we can

Component	20191221A	20210206A	20210213A
1	0(6)	0.00(1)	0.00(5)
2	430(9)	2.221(5)	10.53(8)
3	652(3)	4.974(6)	21.70(3)
4	1086.2(8)	8.358(8)	32.60(2)
5	1520(2)	13.580(9)	44.4(1)
6	1736(1)	...	52.48(5)
7	1952(1)
8	2171(2)
9	2604(2)

Extended Data Table 2: **List of times of arrival (ToAs) for the peaks forming each event.** The ToA of each component is reported in milliseconds relative to the first peak. $1\text{-}\sigma$ uncertainties on the last digit are indicated in parenthesis.

measure confidently given the number of free parameters N as

$$\sigma = \sqrt{\frac{2}{N}}. \quad (2)$$

As visible in Extended Data Figure 3, the model with 9 components has the smallest χ_{red}^2 that deviates significantly from the previous values. Therefore, we choose this as the best model to reproduce the data and use its parameters in our analysis. Choosing a different number of peaks in the profile leads to values of the significance of the periodicity that are still very high, especially for a number of peaks between 9 and 12.

For FRBs 20210206A and 20210213A, the components forming these two events do not overlap. Therefore, it was not necessary to perform the method described above. Instead, we directly used the locations of the peaks in the smoothed profiles as initial conditions for the MCMC sampling using the same model described above. The scattering timescale and average width of the resulting models are presented in Table 1 and Extended Data Table 1, while the peak positions (or ToAs) relative to the first one in each profile are reported in Extended Data Table 2.

FRB	ToAs	Gaps	Trials	p -value (\hat{S})	σ (\hat{S})	P (ms)	Z_1^2	p -value (Z_1^2)	σ (Z_1^2)
20191221A	9	3	1365	6.7×10^{-11}	6.5	217.3	18.0	5.0×10^{-11}	6.22
20210206A	5	0	6	0.195	1.3	2.8	6.9	0.9998	0.0002
20210213A	6	1	15	0.019	2.4	10.8	9.7	0.57	0.58

Extended Data Table 3: **Statistical significance of the FRB periodicities.** For each FRB, we report the number of ToAs measured from the profile, the number of gaps and trials considered in the \hat{S} -periodicity analysis, and the resulting probability and significance. The values in the last four columns are derived using the Rayleigh (Z_1^2) test and show the period obtained in the analysis, the resulting value of the test, and the false alarm probability and significance of the periodicities.

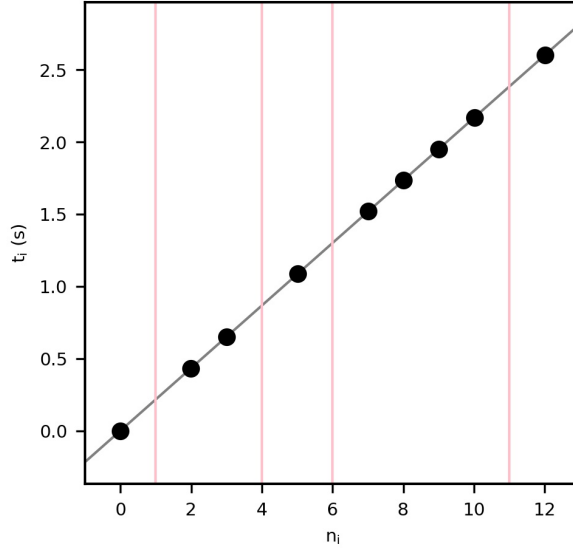
Timing analysis

The periodicities of the three FRBs were initially investigated through a power spectrum of the pulse profile. This has been computed as the absolute square of the Fast Fourier Transform (FFT) of the pulse profiles. The FFT has been calculated with the implementation offered by the `SciPy` module. The resulting power spectra presented in Fig. 2 and Extended Data Fig. 2 show clear peaks for the three sources. The periods corresponding to the most prominent peaks in the power spectra have been refined through an additional timing analysis. We ran a least-squares fit as implemented in `SciPy` using a simple model with the period and an arbitrary overall phase as the only free parameters, calculating residuals as the modulo of ToAs (reported in Extended Data Table 2) and the period. The results of these fits are the values reported in Table 1 and Extended Data Table 1.

Significance of the periodicity: \hat{S} score

The following steps were used to estimate the significance of the periodicity calculated for each of the three sources and reported in Table 1 and Extended Data Table 1.

1. For each event, we use the ToAs reported in Extended Data Table 2 to compute a statistic \hat{S} which is sensitive to periodicity. The construction of \hat{S} is described below.
2. To assign a statistical significance, we use a frequentist approach. We evaluate the statistic



Extended Data Figure 4: **Times of arrival (ToAs) of the components of FRB 20191221A as a function of their measured cycle.** The cycle is defined in Eq. 3. The periodicity appears clearly as the points fall nearly on the straight gray line, which highlights the trend expected for a period of 216.8 ms. Vertical lines mark gaps where no pulse is observed within one period.

\hat{S} on simulated events and rank the ‘data’ value \hat{S}_{data} within the ensemble of simulated values \hat{S}_{sim} , obtaining a p -value. The results are summarized in Extended Data Table 3.

3. For FRB 20191221A, there is an extra step. With 10^8 simulations, we find that none of the \hat{S}_{sim} values exceed \hat{S}_{data} . This shows directly that the level of periodicity in this 9-component event is extraordinarily unlikely to occur by random chance. To assign a p -value, we fit an analytic model PDF to the tail of the \hat{S}_{sim} distribution and integrate the model PDF.

In the rest of this section, we describe the details in the above steps.

To motivate the definitions which follow, consider Extended Data Figure 4. Each point is one pulse in the 9-component event, with the ToA t_i on the y -axis. The values on the x -axis are the 9-element integer-valued vector

$$n_i = (0, 2, 3, 5, 7, 8, 9, 10, 12) \quad (3)$$

Periodicity appears in Extended Data Figure 4 as the points falling nearly on a straight line. Note that there are four ‘gaps’ in this example, i.e. pulse periods where no pulse is observed (either because it is physically absent or buried in the noise). Each gap is represented by consecutive entries in n_i which differ by 2 (rather than 1). Based on this picture, we construct statistics as follows. For a fixed choice of gap vector n_i , we fit the points (n_i, t_i) in Extended Data Figure 4 to a straight line

$$t_i = f^{-1}n_i + T_0 + r_i \quad (4)$$

where this equation defines the residuals r_i , and the parameters (f, T_0) have been chosen to minimize $\sum_i r_i^2$. Note that this fitting procedure weights all ToAs equally, and does not use statistical errors on ToAs. We define a statistic

$$\hat{L}[n] = \frac{1}{2} \log \left(\sum_i \frac{(t_i - \bar{t}_i)^2}{r_i^2} \right) \quad (5)$$

By construction, $\hat{L}[n]$ measures the extent to which the points fall on a straight line for a fixed choice of gap vector n_i . We define the periodicity-sensitive statistic \hat{S} by trying all possible values of n_i

$$\hat{S} = \max_n \left(\hat{L}[n] \right) \quad (6)$$

The maximum in the equation is taken over all trial gap vectors n_i with $\leq G$ gaps, where G is an input parameter to the pipeline. More formally, we take the maximum over integer-valued vectors n_i such that $n_i = 0$, $n_{i-1} < n_i$, and $n_p < n_1 + p + G$, where $p = \text{len}(n)$ is the number of peaks. The number of such vectors is

$$N_{\text{trials}} = \frac{(G + p - 1)!}{G! (p - 1)!} \quad (7)$$

By default, we choose $G = N_{\text{gaps}} + 1$, where N_{gaps} is the number of gaps that are empirically seen in each event. This is a conservative choice, which deliberately ensures that N_{trials} is a few

times larger than the value obtained with $G = N_{\text{gaps}}$ (see Extended Data Table 3).

Our procedure for simulating ToAs has two parameters: a mean spacing \bar{d} , and a dimensionless ‘exclusion’ parameter $0 \leq \chi \leq 1$ defined by

$$\chi = \frac{\text{Minimum allowed spacing between pulses}}{\text{Mean spacing } \bar{d} \text{ between pulses}}. \quad (8)$$

We simulate a sequence $t_1 < \dots < t_p$ of ToAs by independently randomly generating arrival time differences $d_i = (t_i - t_{i-1})$ from the uniform probability distribution $p(d)$ defined by

$$p(d) = \begin{cases} 1/(2\bar{d} - 2\chi\bar{d}) & \text{if } \chi\bar{d} \leq d \leq (2 - \chi)\bar{d} \\ 0 & \text{otherwise} \end{cases}. \quad (9)$$

We also tried an exponential distribution, but find that it gives lower p -values (higher significance). To be conservative, we use the uniform distribution throughout. When we assign a statistical significance by ranking \hat{S}_{data} within a histogram of \hat{S}_{sim} values, we find that the value of \bar{d} does not affect the statistical significance, while the statistical significance decreases as χ is increased in the simulations. However, the statistical significance is not strongly dependent on χ for a reasonable range of the parameter. Therefore, we choose $\chi = 0.2$ to represent our analysis.

For FRB 20191221A, there is an extra step. With 10^8 simulations, we find that none of the \hat{S}_{sim} values exceed \hat{S}_{data} . Therefore, we fit the 10^5 largest values S_i of the \hat{S}_{sim} -distribution to an analytic PDF of the form

$$p(S) \propto e^{-aS^q} \quad (10)$$

by maximizing the likelihood $\prod_i P(S_i|a, q)$. The analytic PDF $p(S)$ is an excellent visual fit to the tail of the \hat{S}_{sim} distribution. More quantitatively, a KS test shows no statistical difference between $p(S)$ and the simulations (p -value 0.58). To assign a bottom-line p -value, we integrate the analytic PDF from $S = \hat{S}_{\text{data}}$ to $S = \infty$. This gives a p -value of 6.7×10^{-11} , corresponding

to Gaussian significance 6.5σ .

The preceding derivation of the statistic \hat{S} was heuristic, based on intuition from Extended Data Figure 4. However, \hat{S} can also be interpreted as a likelihood ratio statistic. This provides a systematic derivation, and also shows that \hat{S} is near-optimal. Let H_0 be the null hypothesis that the ToAs t_i are Gaussian distributed with mean T and variance σ^2 . In this model, the conditional likelihood of obtaining ToAs t_i given model parameters (T, σ) is

$$P(t_i|H_0, T, \sigma) = \prod_i \frac{1}{\sqrt{2\pi\sigma^2}} \exp\left(-\frac{(t_i - T)^2}{2\sigma^2}\right) \quad (11)$$

Let H_1 be the alternate hypothesis that the t_i are given by the linear regression in Eq. (4), where the residuals r_i are Gaussian with variance σ^2 . The conditional likelihood of obtaining t_i given model parameters (n_i, f, T, σ) is

$$P(t_i|H_1, n_i, f, T, \sigma) = \prod_i \frac{1}{\sqrt{2\pi\sigma^2}} \exp\left(-\frac{(t_i - T - f^{-1}n_i)^2}{2\sigma^2}\right) \quad (12)$$

Then a short calculation shows that the \hat{S} statistic is the log-likelihood ratio of the two models, after maximizing all model parameters

$$\hat{S} = \left(\max_{n,f,t,\sigma} \log P(t_i|H_1, n_i, f, T, \sigma) \right) - \left(\max_{n,f,t,\sigma} \log P(t_i|H_0, T, \sigma) \right) \quad (13)$$

As a further test of our pipeline, we applied the \hat{S} statistic to CHIME/Pulsar⁴³ observations of the bright pulsar PSR B1919+21. If we select three pulses with one gap, periodicity is detected at the $\sim 3\sigma$ level. If we select four pulses or more with either one or two gaps, periodicity is detected at $> 4\sigma$.

Rayleigh (Z_1^2) periodicity analysis.

We have shown in the previous section that the \hat{S} statistic is nearly optimal for determining the statistical significance of the periodicity observed in each FRB. However, we also calculated the significance through a different statistic that is commonly used in studies of periodicities of high-energy pulsars, the Rayleigh (Z_1^2) statistic.^{44,45} In general, the Z_n^2 test statistic is defined as

$$Z_n^2 = \frac{2}{N} \sum_{k=1}^n \left[\left(\sum_{j=1}^N \cos k\phi_j \right)^2 + \left(\sum_{j=1}^N \sin k\phi_j \right)^2 \right], \quad (14)$$

where N is the number of peaks, n is the number of harmonics, and ϕ_j is the phase of each ToA, t_j . The phase of each ToA is determined using $\phi_j = \nu t_j$, where ν is the modulation frequency. In the following analysis, we use $n = 1$ harmonics in Eq. (14), which corresponds to the Rayleigh test, and the ToAs listed in Extended Data Table 2. All of the ToAs were weighted equally in our analysis.

We performed a blind search for periodicity using the Z_1^2 test statistic defined in Eq. (14) and the ToAs listed in Extended Data Table 2. The number of frequency trials used to search for periodicity was determined by the time resolution (Δt) and the duration (T) of the data containing each of the bursts. The time resolution and duration of the data used to perform the Rayleigh test were $\Delta t = 7.86432$ ms and $T = 4.215$ s for FRB 20191221A, $\Delta t = 81.92$ μ s and $T = 19.6608$ ms for FRB 20210206A, and $\Delta t = 327.68$ μ s and $T = 81.92$ ms for FRB 20210213A, respectively. We searched for evidence of periodicity by calculating the Z_1^2 test statistics at a range of trial frequencies $\nu \in [\Delta\nu, \nu_{\text{nyq}}]$, where $\Delta\nu = 1/T$ is the nominal frequency resolution of each data set, $\nu_{\text{nyq}} = \nu_{\text{samp}}/2 = 1/(2\Delta t)$ is the Nyquist frequency, and ν_{samp} is the sampling frequency of the data. In addition, we oversample the frequency grid by a factor of $\mathcal{O} = 5$. The results of this calculation are presented in Extended Data Table 3.

The values of Z_1^2 for the three events were converted to significance values by randomly generating arrival time differences using Monte Carlo simulations. Due to the high significance of the periodicity in FRB 20191221A, we used $\mathcal{N}_{\text{sim}} = 10^{10}$ Monte Carlo simulations in our

analysis of this event. For the other two events (FRBs 20210206A and 20210213A), $\mathcal{N}_{\text{sim}} = 10^9$ Monte Carlo simulations were used to determine the significances. Using the measured ToAs, we construct random realizations of arrival time differences by drawing from a uniform probability distribution defined by Eq. (9). For each event, we perform separate sets of simulations for exclusion parameters $0 \leq \chi \leq 0.5$, defined according to Eq. (8). The value of χ determines the time separation between the simulated ToAs. In the limit $\chi \rightarrow 1$, the simulated ToAs become perfectly periodic, so we restrict $\chi \leq 0.5$. These values of χ are used to impose a minimum time separation between ToAs in the simulations. The statistical significance of the periodicities is not strongly affected by the choice of these values of χ , so we select $\chi = 0.2$ in this analysis. We compare the distribution of maximum Z_1^2 test statistics obtained from each set of simulations, for a given value of χ , to the Z_1^2 value obtained using the measured ToAs. The false alarm probability (FAP) and equivalent Gaussian significance are calculated using

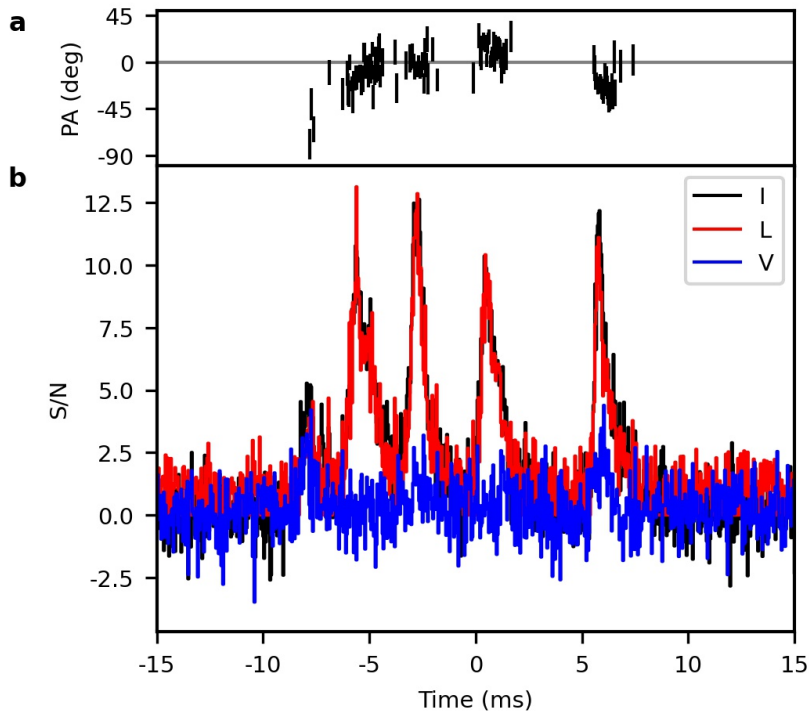
$$P_{\text{FAP}} = 1 - \text{CDF}(Z_1^2) = 1 - [1 - P(Z_1^2 > Z_{1,\nu_0}^2 | \nu = \nu_0)], \quad (15)$$

where ν_0 is the putative periodicity determined from the ToAs measured from each event.

In this analysis, the tail-fitting procedure described above is not used. Instead, the FAPs are calculated based on the number of Monte Carlo simulations that have a maximum Z_1^2 test statistic which exceeds the Z_1^2 value obtained using the measured ToAs. We find that the periodicity observed from FRB 20191221A has a significance of 6.2σ using this method. The equivalent significance of the periodicities observed from FRBs 20210206A and 20210213A are both $< 1\sigma$ using the Rayleigh (Z_1^2) statistic (see Extended Data Table 3).

Polarisation analysis

Full polarisation information is stored for FRBs 20210206A and 20210213A. The polarisation analysis follows a similar procedure to that previously applied to other CHIME-detected FRBs.^{41,46} In particular, an initial RM estimate is made by applying RM-synthesis^{47,48} to the



Extended Data Figure 5: **Polarisation profiles of FRB 20210206A.** **a**, The polarisation angle (PA) values with $1\text{-}\sigma$ error bars referenced to infinite frequency and rotated by an arbitrary angle. **b**, The total (I, black), linear (L, red) and circular (V, blue) intensities across the burst envelope.

Stokes Q and U data of each burst. The Stokes spectrum is extracted by integrating the polarised signal over the burst duration, where time and frequency limits have been manually adjusted to optimize the RM detection.

For FRB 20210206A, RM-synthesis results in an unambiguous RM detection. This detection is refined by applying a Stokes QU-fitting routine that directly fits for the modulation between Stokes Q and U from Faraday rotation as well as the modulation between U and V introduced by an instrumental delay between the two linear polarisations. Optimal values are determined numerically through Nested Sampling, a Monte Carlo method that seeks to optimize the likelihood function given a model and data. Further details on the CHIME/FRB polarisation analysis pipeline are presented elsewhere.⁴⁹ The instrumental delay, once fitted for, can be used to produce a delay-corrected spectrum. The RMs produced from these two independent

methods agree within the measurement uncertainties. An $\text{RM} = +193.6(1) \text{ rad m}^{-2}$ is given by QU-fitting and it is used to produce the polarized burst profile shown in Extended Data Figure 5. We estimate a Galactic contribution of $\text{RM}_{\text{MW}} = -150(33) \text{ rad m}^{-2}$ along the sightline of FRB 20210206A,⁵⁰ suggesting a significant extragalactic source of Faraday rotation.

FRB 20210213A, conversely, displays an absence of polarised signal. Applying RM-synthesis produces no clear RM detection over the range $-2000 \lesssim \text{RM} \lesssim 2000 \text{ rad m}^{-2}$. For $|\text{RM}|$ values beyond this range, bandwidth depolarisation from Faraday rotation within a single frequency channel becomes significant at the native channelization of CHIME/FRB baseband data.⁴⁹ We developed an algorithm⁴⁹ that employs a phase-coherent method of correcting for bandwidth depolarisation in data for which the electric field phase is retained.⁵¹ Using this method, we search out to $|\text{RM}|$ values as large as 10^6 rad m^{-2} by applying coherent de-rotation to a sparse grid of trial RMs followed by an incoherent search at neighbouring RM values. In principle, this method extends detectable RMs to arbitrarily large values. In practice, artifacts introduced in the channelization of CHIME/FRB baseband data reduce sensitivity to polarized signals at larger $|\text{RM}|$ values. Given the low S/N of this burst, it remains possible that this event displays a large $|\text{RM}|$ that simply goes undetected due to the deleterious effect of the channelization procedure. We test this possibility by using simulated data to determine the loss of S/N with increasing RM. Using a simulated burst with properties similar to that of FRB 20210213A (e.g., S/N, subband), we evaluate the performance of our coherent de-rotation algorithm over a range of RM values. We find no significant loss of polarised signal out to RM values as large as $|\text{RM}| \sim 200,000 \text{ rad m}^{-2}$. Therefore, if this event does indeed display an RM within this range, a significant fraction of the signal must be unpolarised ($\gtrsim 50\%$) for us to not detect it given the S/N of the event. Conversely, we rule out the possibility of $|\text{RM}|$ values larger than $\sim 200,000 \text{ rad m}^{-2}$ by detecting a lack of splitting in the burst morphology potentially caused by extreme RM values.⁵²

We note that ionospheric RM has not been corrected for in our analysis, but it does not exceed a few rad m^{-2} .

Model of gravitational lensing

As a possible explanation to the magnification that would be necessary to observe a radio pulsar located in another galaxy, we explore the observability of a pulsar that is gravitationally micro-lensed. In this model, pulses from a radio pulsar in a binary system are magnified in intensity by the gravitational field of its companion. The magnification would be modulated in time such that the signal from the pulsar would be convolved with a bell-shaped curve. The pulse profiles detected for the three FRBs presented here are qualitatively consistent with this morphology.

We consider a binary system with a pulsar of mass $M_s = 1 M_\odot$ and explore the parameter space of lensing masses, system alignment, and orbital separations to explain the properties of the three FRBs.

We use a test pulsar at a distance of 1 Gpc (approximately the DM-inferred distance of FRB 20210213A) emitting periodic pulses with a luminosity of 1 Jy kpc^2 , comparable to Galactic radio pulsars. Without any magnification, such a pulsar would be observed on Earth with a peak flux of $\sim 10^{-11} \text{ Jy}$. Therefore, a magnification $\mu \gtrsim 10^{11}$ is needed to explain the fluxes of $\sim 1 \text{ Jy}$ observed for the three FRBs here reported.

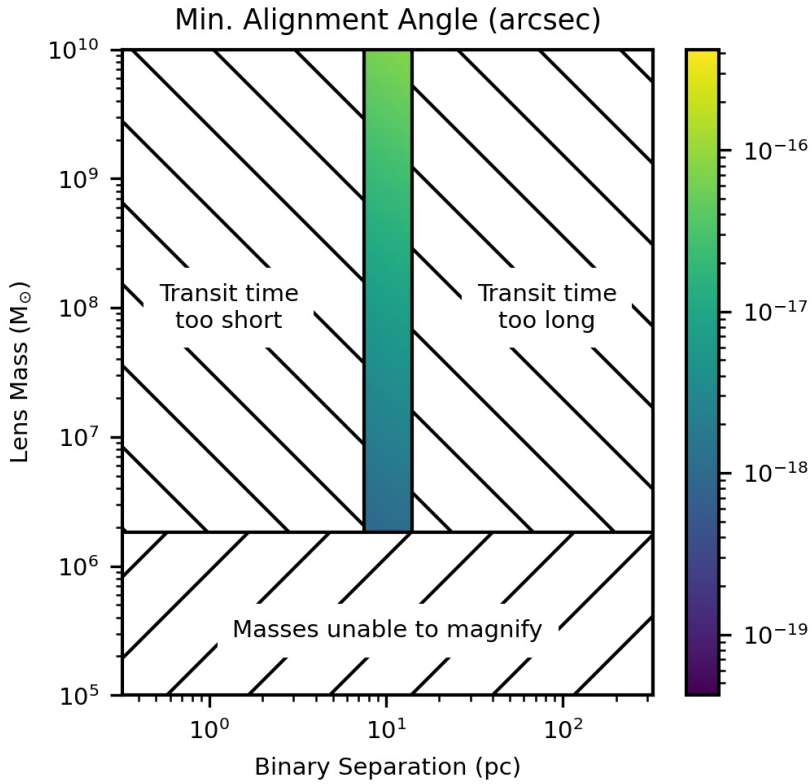
We constrain the parameter space by first requiring the lens mass M_{lens} to be able to magnify the pulsar⁵³

$$\mu \lesssim \frac{4\pi G M_{\text{lens}} f}{c^3}, \quad (16)$$

where G is the gravitational constant and f is the observed frequency.

The orbital separation of the binary system D_{ls} and its alignment are constrained by requiring that we only observe the magnification curve for the duration of the event Δt . The minimum alignment angle β of the binary system can be calculated as⁵³

$$\mu = \frac{\beta^2 + 2\theta_E^2}{\beta \sqrt{\beta^2 + 4\theta_E^2}}, \quad (17)$$



Extended Data Figure 6: **Parameters of a binary system producing a radio signal compatible with the FRBs presented here through gravitational lensing.** The system, located at 1 Gpc, contains a $1 M_{\odot}$ pulsar emitting 1 Jy pulses which are lensed by its companion. The allowed parameter space is shown with brighter colors as a function of the minimum alignment angle (color-coded), companion mass and separation of the binary system.

where the Einstein angle θ_E is defined as

$$\theta_E = \sqrt{\frac{4GM_{lens}}{c^2} \frac{D_{ls}}{D_{os}D_{ol}}}. \quad (18)$$

D_{os} is the distance between the observer and the source, D_{ol} is the distance between the observer and the lens, and D_{ls} is the orbital separation that we want to constrain. β is further constrained by

$$\beta \gtrsim \omega \Delta t, \quad (19)$$

where ω is the orbital angular velocity of the lens, defined as

$$\omega = \sqrt{\frac{GM_{lens}^3}{D_{ls}^3(M_s + M_{lens})^2}}, \quad (20)$$

and Δt is the duration of time in which the pulsar is magnified enough to be detected above the noise floor. We use Eqs. 16, 17, and 19 to constrain the properties of the binary system and plot the parameter space shown in Extended Data Figure 6.

The orbital inclination of the lensing system would need to be aligned to the line of sight within $10^{-17} - 10^{-18}$ arcseconds, depending on the lens mass. The small required alignment angle implies a low probability to observe such an event despite the large trial factor provided by the number of galaxies within a Gpc distance. In addition, in this scenario, we would expect to detect a larger number of FRBs from gravitationally lensed pulsars in the nearby universe since they would require a lower magnification. Therefore, the absence of multi-peaked, periodic FRBs with a small DM excess⁷ implies that it is unlikely that we have detected a gravitationally micro-lensed pulsar of average luminosity at a distance of 1 Gpc.

Model of merging compact objects

A different model that could produce periodic FRBs considers merging neutron stars that emit the FRB signal. One possible interaction of merging neutron stars to produce periodic FRBs is

through a unipolar inductor process where the companion orbiting through the magnetic field acts as a conductor driving a current loop. The latter accelerates electrons and positrons to emit curvature radiation^{54–57} in orbital frequencies ranging from few Hz to kHz, corresponding to orbital separations of 10–1000 km in the binary neutron star case. Another proposed mechanism to extract energy is through the magnetic braking and spin-orbital synchronization of merging binary neutron stars.^{58,59} The coherent emission is hypothesized to arise from the magnetosphere in a manner roughly similar to isolated pulsars as the rotation rate of one of the neutron stars rapidly increases or decreases to synchronize with the binary rotation. In such a case, FRB emission may show multiple peaks corresponding to a favourable orbital phase for a range of orbital periods.

The loss of angular momentum and energy through gravitational wave radiation causes the compact object binary orbits to decay with a predictable relation between the orbital angular frequency ω and time t . We consider the equation⁶⁰ for the instantaneous orbital angular frequency derivative (with $c=G=1$)

$$\dot{\omega} = \frac{96}{5}\eta m^{5/3}\omega^{11/3} \left[1 - \left(\frac{743}{336} + \frac{11}{4}\eta \right) (m\omega)^{2/3} + 4\pi m\omega + \left(\frac{34103}{18144} + \frac{13661}{2016}\eta + \frac{59}{18}\eta^2 \right) (m\omega)^{4/3} \right]. \quad (21)$$

Here, $m = m_1 + m_2$ and $\eta = m_1 m_2 / m^2$ are the total mass and reduced mass, respectively, of two components of mass m_1 and m_2 . We have assumed that spin-orbit and spin-spin coupling are negligible. Since the orbital angular frequency is related to the observed pulse period by

$$P = \frac{2\pi}{\omega}, \quad (22)$$

it follows that

$$\dot{P} = -\frac{2\pi\dot{\omega}}{\omega^2}. \quad (23)$$

For a given set of trial masses, (m_1, m_2) , we integrated numerically Eq. (21) twice to calculate the orbital phase ϕ , i.e. we go from $\dot{\omega}(\omega, t) \rightarrow \omega(t) \rightarrow \phi(t)$. The initial orbital period was

chosen to be larger than the periods measured for these FRBs and the system was evolved until $\omega = 2\pi \times 10^6 \text{ rad s}^{-1}$, very close to the final merger. We numerically inverted $\phi(t)$ to get $t(\phi)$, the time of passage of the components through a specific orbital phase. We use this to fit the ToAs through the same procedure used to study the significance of the periodicity. We modified Eq. (4) as

$$t_i = t(2\pi n_i + \phi_0) + r_i, \quad (24)$$

where ϕ_0 is an arbitrary initial phase and the integer-valued n_i vector is defined in Eq. (3). We fixed one of the components to be a neutron star with $m_1 = 1.4 M_\odot$ and then searched the parameter space of (m_2, ϕ_0, n_i) to minimize the root-mean-square of the residuals r_i . We find that FRB 20210206A cannot be explained by a merging neutron star model as the expected period derivative $\dot{P} \sim 5 \times 10^{12} \text{ s s}^{-1}$ is not consistent with the observed peak separation. On the other hand, the ToAs for FRB 20191221A and FRB 20210213A are well-fit by this model for a broad range of mass m_2 ($0.1 - 6 M_\odot$ and $1.3 - 6 M_\odot$, respectively) and the same allowed space of ‘gap-vectors’ n_i as the previous fits. The putative separation of the neutron stars from their companions for these orbital fits would be 10^3 km and 10^2 km , respectively. These systems would be extremely short-lived. The timescale for these systems to merge, from the FRB event time is about $\sim 10^2 - 10^4 \text{ s}$ and $0.1-1 \text{ s}$, respectively, depending on the companion masses. An eventual future detection of repeating bursts from these FRB sources would disprove this model.

27. Ng, C. *et al.* CHIME FRB: An application of FFT beamforming for a radio telescope in *Proceedings of XXXIInd General Assembly and Scientific Symposium of the International Union of Radio Science (URSI GASS)* (2017), 1–4.
28. Michilli, D. *et al.* An Analysis Pipeline for CHIME/FRB Full-array Baseband Data. *Astrophys. J.* **910**, 147 (2021).
29. Nimmo, K. *et al.* Highly polarized microstructure from the repeating FRB 20180916B. *Nature Astronomy* **5**, 594–603 (2021).
30. Majid, W. A. *et al.* A Bright Fast Radio Burst from FRB 20200120E with Sub-100 Nanosecond Structure. *Astrophys. J. Letters* **919**, L6 (2021).
31. Pastor-Marazuela, I. *et al.* A fast radio burst with sub-millisecond quasi-periodic structure. *arXiv e-prints*, arXiv:2202.08002 (2022).
32. CHIME/FRB Collaboration *et al.* Periodic activity from a fast radio burst source. *Nature* **582**, 351–355 (2020).
33. Rajwade, K. M. *et al.* Possible periodic activity in the repeating FRB 121102. *Mon. Not. R. Astron. Soc.* **495**, 3551–3558 (2020).
34. Bhardwaj, M. *et al.* A Local Universe Host for the Repeating Fast Radio Burst FRB 20181030A. *Astrophys. J. Letters* **919**, L24 (2021).
35. Han, J. L. *et al.* The FAST Galactic Plane Pulsar Snapshot survey: I. Project design and pulsar discoveries. *Research in Astronomy and Astrophysics* **21**, 107 (2021).
36. Foreman-Mackey, D., Hogg, D. W., Lang, D. & Goodman, J. emcee: The MCMC Hammer. *Publ. Astron. Soc. Pac.* **125**, 306 (2013).
37. Masui, K. W. *et al.* Algorithms for FFT Beamforming Radio Interferometers. *Astrophys. J.* **879**, 16 (2019).
38. CHIME/FRB Collaboration *et al.* A second source of repeating fast radio bursts. *Nature* **566**, 235–238 (2019).
39. Josephy, A. *et al.* CHIME/FRB Detection of the Original Repeating Fast Radio Burst Source FRB 121102. *Astrophys. J. Letters* **882**, L18 (2019).

40. CHIME/FRB Collaboration *et al.* CHIME/FRB Detection of Eight New Repeating Fast Radio Burst Sources. *Astrophys. J. Letters* **885**, L24 (2019).
41. Fonseca, E. *et al.* Nine New Repeating Fast Radio Burst Sources from CHIME/FRB. *Astrophys. J. Letters* **891**, L6 (2020).
42. McKinnon, M. M. The Analytical Solution to the Temporal Broadening of a Gaussian-Shaped Radio Pulse by Multipath Scattering from a Thin Screen in the Interstellar Medium. *Publ. Astron. Soc. Pac.* **126**, 476 (2014).
43. CHIME/Pulsar Collaboration *et al.* The CHIME Pulsar Project: System Overview. *Astrophys. J. Suppl.* **255**, 5 (2021).
44. Buccheri, R. *et al.* Search for pulsed γ -ray emission from radio pulsars in the COS-B data. *Astron. & Astrophys.* **128**, 245–251 (1983).
45. de Jager, O. C. On Periodicity Tests and Flux Limit Calculations for Gamma-Ray Pulsars. *Astrophys. J.* **436**, 239 (1994).
46. Bhardwaj, M. *et al.* A Nearby Repeating Fast Radio Burst in the Direction of M81. *Astrophys. J. Letters* **910**, L18 (2021).
47. Burn, B. J. On the depolarization of discrete radio sources by Faraday dispersion. *Mon. Not. R. Astron. Soc.* **133**, 67 (1966).
48. Brentjens, M. A. & de Bruyn, A. G. Faraday rotation measure synthesis. *Astron. & Astrophys.* **441**, 1217–1228 (2005).
49. Mckinven, R. *et al.* Polarization Pipeline for Fast Radio Bursts Detected by CHIME/FRB. *Astrophys. J.* **920**, 138 (2021).
50. Hutschenreuter, S. *et al.* The Galactic Faraday rotation sky 2020. *Astron. & Astrophys.* **657**, A43 (2022).
51. van Straten, W. Radio Astronomical Polarimetry and Phase-coherent Matrix Convolution. *Astrophys. J.* **568**, 436–442 (2002).
52. Suresh, A. & Cordes, J. M. Induced Polarization from Birefringent Pulse Splitting in Magneto-ionic Media. *Astrophys. J.* **870**, 29 (2019).
53. Schneider, P., Ehlers, J. & Falco, E. E. *Gravitational Lenses* (Springer, Berlin, Heidelberg, 1992).

54. Piro, A. L. Magnetic Interactions in Coalescing Neutron Star Binaries. *Astrophys. J.* **755**, 80 (2012).
55. Mingarelli, C. M. F., Levin, J. & Lazio, T. J. W. Fast Radio Bursts and Radio Transients from Black Hole Batteries. *Astrophys. J. Letters* **814**, L20 (2015).
56. Wang, J.-S., Yang, Y.-P., Wu, X.-F., Dai, Z.-G. & Wang, F.-Y. Fast Radio Bursts from the Inspiral of Double Neutron Stars. *Astrophys. J. Letters* **822**, L7 (2016).
57. Wang, J.-S., Peng, F.-K., Wu, K. & Dai, Z.-G. Pre-merger Electromagnetic Counterparts of Binary Compact Stars. *Astrophys. J.* **868**, 19 (2018).
58. Hansen, B. M. S. & Lyutikov, M. Radio and X-ray signatures of merging neutron stars. *Mon. Not. R. Astron. Soc.* **322**, 695–701 (2001).
59. Totani, T. Cosmological Fast Radio Bursts from Binary Neutron Star Mergers. *Publications of the Astronomical Society of Japan* **65**, L12 (2013).
60. Blanchet, L., Damour, T., Iyer, B. R., Will, C. M. & Wiseman, A. G. Gravitational-Radiation Damping of Compact Binary Systems to Second Post-Newtonian Order. *Phys. Rev. Letters* **74**, 3515–3518 (1995).

Data availability The data used in this paper is stored into Hierarchical Data Format 5 files available at <https://doi.org/10.11570/22.0003>.

Code availability The code used to model the signal from the sources presented in this publication, calculate their periodicities and plot the results is available at <https://doi.org/10.11570/22.0003>, together with the algorithms to calculate the \hat{S} score and the Rayleigh statistic Z_1^2 used to estimate the significance of the periodicities.

Acknowledgements We acknowledge that CHIME is located on the traditional, ancestral, and unceded territory of the Syilx/Okanagan people. We thank the Dominion Radio Astrophysical Observatory, operated by the National Research Council Canada, for gracious hospitality and expertise. CHIME is funded by a grant from the Canada Foundation for Innovation (CFI) 2012 Leading Edge Fund (Project 31170) and by contributions from the provinces of British Columbia, Québec and Ontario. The CHIME/FRB Project is funded by a grant from the CFI 2015 Innovation Fund (Project 33213) and by contributions from the provinces of British Columbia and Québec, and by the Dunlap Institute for Astronomy and

Astrophysics at the University of Toronto. Additional support was provided by the Canadian Institute for Advanced Research (CIFAR), McGill University and the McGill Space Institute via the Trotter Family Foundation, and the University of British Columbia. The Dunlap Institute is funded through an endowment established by the David Dunlap family and the University of Toronto. Research at Perimeter Institute is supported by the Government of Canada through Industry Canada and by the Province of Ontario through the Ministry of Research & Innovation. The National Radio Astronomy Observatory is a facility of the National Science Foundation (NSF) operated under cooperative agreement by Associated Universities, Inc. FRB research at UBC is supported by an NSERC Discovery Grant and by the Canadian Institute for Advanced Research. The CHIME/FRB baseband system is funded in part by a Canada Foundation for Innovation John R. Evans Leaders Fund award to I.H.S. A.B.P. is a McGill Space Institute (MSI) Fellow and a Fonds de Recherche du Quebec – Nature et Technologies (FRQNT) postdoctoral fellow. A.O. is supported by the Dunlap Institute. A.S.H. is supported by an NSERC Discovery Grant. B.M.G. is supported by an NSERC Discovery Grant (RGPIN-2015-05948), and by the Canada Research Chairs (CRC) program. C.L. was supported by the U.S. Department of Defense (DoD) through the National Defense Science & Engineering Graduate Fellowship (NDSEG) Program. D.C.G. is supported by the John I. Watters Research Fellowship. D.M. is a Banting Fellow. E.P. acknowledges funding from an NWO Veni Fellowship. J.M.P. is a Kavli Fellow. K.B. is supported by an NSF grant (2006548). K.W.M. is supported by an NSF Grant (2008031). M.B. is supported by an FRQNT Doctoral Research Award. M.D. is supported by a Killam Fellowship, Canada Research Chair, NSERC Discovery Grant, CIFAR, and by the FRQNT Centre de Recherche en Astrophysique du Québec (CRAQ). M.M. is supported by an NSERC PGS-D award. P.C. is supported by an FRQNT Doctoral Research Award. P.S. is a Dunlap Fellow and an NSERC Postdoctoral Fellow. S.C. acknowledges support from the National Science Foundation (AAG 1815242). S.M.R. is a CIFAR Fellow and is supported by the NSF Physics Frontiers Center award 1430284. U.L.P. receives the support of the Natural Sciences and Engineering Research Council of Canada (NSERC), [funding reference number RGPIN-2019-067, CRD 523638-18, 555585-20], Ontario Research Fund—research Excellence Program (ORF-RE), Canadian Institute for Advanced Research (CIFAR), Thoth Technology Inc, Alexander von Humboldt Foundation, and the Ministry of Science and Technology(MOST) of Taiwan(110-2112-M-001-071-MY3). V.M.K. holds the Lorne Trot-

tier Chair in Astrophysics & Cosmology and a Distinguished James McGill Professorship and receives support from an NSERC Discovery Grant and Herzberg Award, from an R. Howard Webster Foundation Fellowship from the Canadian Institute for Advanced Research (CIFAR), and from the FRQNT Centre de Recherche en Astrophysique du Quebec.

Author Contributions All authors from CHIME/FRB collaboration played either leadership or significant supporting roles in one or more of: the management, development and construction of the CHIME telescope, the CHIME/FRB instrument and the CHIME/FRB software data pipeline, the commissioning and operations of the CHIME/FRB instrument, the data analysis and preparation of this manuscript. All authors from CHIME collaboration played either leadership or significant supporting roles in the management, development and construction of the CHIME telescope.

Correspondence and requests for materials should be addressed to Daniele Michilli (email: danielemichilli@gmail.com).