



HAL
open science

Impaired self-recognition in individuals with no full-blown psychotic symptoms represented across the continuum of psychosis: a meta-analysis

Layla Lavallé, Clément Dondé, Łukasz Gawęda, Jérôme Brunelin, Marine Mondino

► To cite this version:

Layla Lavallé, Clément Dondé, Łukasz Gawęda, Jérôme Brunelin, Marine Mondino. Impaired self-recognition in individuals with no full-blown psychotic symptoms represented across the continuum of psychosis: a meta-analysis. *Psychological Medicine*, 2020, 51 (16), pp.2864-2874. 10.1017/S003329172000152X . hal-04440333

HAL Id: hal-04440333

<https://hal.science/hal-04440333>

Submitted on 6 Feb 2024

HAL is a multi-disciplinary open access archive for the deposit and dissemination of scientific research documents, whether they are published or not. The documents may come from teaching and research institutions in France or abroad, or from public or private research centers.

L'archive ouverte pluridisciplinaire **HAL**, est destinée au dépôt et à la diffusion de documents scientifiques de niveau recherche, publiés ou non, émanant des établissements d'enseignement et de recherche français ou étrangers, des laboratoires publics ou privés.

Title

Impaired self-recognition in individuals with no full-blown psychotic symptoms represented across the continuum of psychosis: a meta-analysis

Subtitle

Self-recognition and the psychosis continuum

Authors

Layla Lavallé^{a,b,c}, Clément Dondé^{a,b,c}, Łukasz Gawęda^d, Jérôme Brunelin^{a,b,c*}, Marine Mondino^{a,b,c}

Affiliations

^a INSERM U1028, CNRS UMR5292, Lyon Neuroscience Research Center, PSY-R2 Team, Lyon F-69000, France

^b Lyon University, F-69000, France

^c Centre Hospitalier le Vinatier, Batiment 416, 95 Bd Pinel, 69678 Bron, France

^d Experimental Psychopathology Lab, Institute of Psychology, Polish Academy of Sciences, Warsaw, Poland

Corresponding author

Jérôme Brunelin jerome.brunelin@ch-le-vinatier.fr

INSERM, U1028, Lyon Neuroscience Research Center, PSY-R2 team,

CH Le Vinatier, Batiment 416, 95 boulevard Pinel, BP 300 39; 69 678 BRON cedex, France

tel: +33 43 79 15 49 5

Declaration of interest: None

Word count: 4448

Word count abstract: 165

Impaired self-recognition in individuals with no full-blown psychotic symptoms represented across the continuum of psychosis: a meta-analysis

ABSTRACT

Background: Impairments in self-recognition (i.e., recognition of own thoughts and actions) have been repeatedly shown in individuals with schizophrenia. According to classical clinical characterisations, schizophrenia is included into a continuum encompassing a large range of genetic statuses, psychotic states and symptoms. The current meta-analysis aims to determine whether self-recognition is affected in individuals within the psychosis continuum.

Method: Three populations were considered: people with an at-risk mental state for psychosis (ARMS), hallucination-prone individuals and unaffected relatives of patients with schizophrenia. Eleven studies contrasted self-recognition between these three populations (n=386) and healthy controls (n=315) and 4 studies used correlational analysis to estimate comparable effects (n=629). Eligible studies used experimental paradigms including source-monitoring and self-monitoring.

Results: We observed significantly reduced self-recognition accuracy in these populations ($g=-0.44$ [-0.71; -0.17]), $p=0.002$) compared to controls. No influence of type of population, experimental paradigm or study design was observed.

Conclusion: The present analysis argues for self-recognition deficits in populations with no full-blown psychotic symptoms represented across the continuum of psychosis.

Key-words: schizophrenia; hallucination-prone; at-risk mental state; clinical high-risk; unaffected relatives; self-recognition; source-monitoring; self-monitoring; meta-analysis

1. INTRODUCTION

Schizophrenia is a psychotic disorder associated with positive symptoms such as hallucinations and delusions (Owen et al., 2016). Among others, failure in self-recognition abilities (i.e., recognition of own thoughts and actions) has been proposed as a cognitive mechanism that underlies these symptoms. According to this theory, a defective internal labeling of own thoughts/actions associated with their misattribution to an external source may lead patients to experience their thoughts as coming from external agents (i.e., auditory hallucinations) or their acts as arising from alien control (i.e., delusion of control) (Frith et al., 2000; Frith & Done, 1988). Supporting this assumption, schizophrenia studies have repeatedly demonstrated that misidentification of internal and external sources of events is a consistent trait of the disorder (Brookwell et al., 2013; Waters et al., 2012). Self-recognition deficits have been investigated through self-monitoring paradigms, in which patients receive a distorted feed-back of their own spoken word/ motor action and are requested to identify it online as self- or non-self- produced. In parallel, such impairments are believed to be reflected by so-called “source-monitoring” deficits (i.e., failure in remembering the source of an information) (Johnson et al., 1993). In this framework, deficits in remembering between self-generated vs. experimenter-generated events and between self-generated information kept in the inner space (thoughts) vs. events produced in the outer space (Bentall, 1990; Brunelin et al., 2006; Woodward, Menon, & Whitman, 2007) are termed reality- and internal- monitoring processes, respectively (Johnson et al., 1993). Source-monitoring testing procedures consist in two phases: encoding and retrieval. During the encoding phase, information from different sources are presented to the subject. During the retrieval phase, the subject has to identify to which source were associated the information.

According to classical characterizations of psychotic disorders, schizophrenia is included into a continuum encompassing a large range of genetic statuses, psychotic states and symptoms. A recent model defines the “At-Risk Mental State” for psychosis (ARMS) (McGorry et al., 2018), a condition that includes people who have experienced attenuated positive psychotic symptoms during the past year (APS), or episodes of frank psychotic symptoms that have not lasted longer than a week and have spontaneously abated (BLIPS), and people with schizotypal personality or genetic risk and deterioration syndrome (GRD) (Fusar-Poli et al., 2013). In addition, the psychosis continuum acknowledges observations of subclinical experiences in non-clinical populations, such as hallucination-prone people and unaffected relatives of patients with schizophrenia (often referred as genetic risk group)

(Verdoux & van Os, 2002). Widespread impairments in neurocognitive functions have been demonstrated in ARMS (Bora & Murray, 2014; Fusar-Poli et al., 2012; Giuliano et al., 2012) and people with hallucination proneness (Brébion et al., 2010; Gupta et al., 2018; Morrison et al., 2000). Moreover, several studies observed deficits in executive functioning, attention and verbal ability in unaffected relatives (Faraone et al., 1995; Saoud et al., 2000), thereby suggesting the existence of a “cognitive” continuum, i.e. a continuum in cognitive impairments, from healthy functioning to full-blown psychotic disorder that encompasses subclinical alterations and severe clinical manifestations (Johns & van Os, 2001). Critically, since unaffected relatives and ARMS individuals have been associated with a prospective risk of developing schizophrenia (McGorry & Killackey, 2002; Morrison et al., 2004), there has been an increasing focus on the ability of cognitive measures to predict transition to psychosis and index the physiological processes that underlie psychotic symptoms. Thus, identifying cognitive markers of the psychosis continuum has been one of the main objectives of clinical research in psychiatry over the last decades in order to identify individuals at risk to develop schizophrenia and propose early interventions.

Here, we hypothesized that individuals with no full-blown psychotic symptoms represented across the continuum of psychosis (i.e., ARMS, hallucination-prone individuals and unaffected relatives of patients with schizophrenia) would display significant deficits in self-recognition processes. In the context of growing interest for cognitive markers of the psychosis continuum and the need to extend our knowledge in the field of self-recognition processing in psychosis, we undertook a meta-analysis of the existing literature investigating self-recognition performance across the three populations.

The objectives were threefold: (i) to investigate self-recognition abilities in individuals with no full-blown psychotic symptoms represented across the continuum of psychosis, (ii) to measure the moderating effect of the population type on self-recognition abilities and (iii) to identify whether self-recognition abilities in these populations are influenced by a task-specific effect.

2. METHODS

This study was performed according to the Preferred Reporting Items for Systematic Reviews and Meta-Analyses (PRISMA) guidelines (Moher et al., 2009). The protocol was registered in PROSPERO (Chien et al., 2012)

(https://www.crd.york.ac.uk/prospero/display_record.php?RecordID=129873; registration number: CRD42019129873).

2.1. Literature search strategy

2.1.1. Eligibility

Studies were selected with the following inclusion criteria: (i) articles published in English language in peer-reviewed journals, (ii) studies including participants with an ARMS (individuals with APS, BLIPS or GRD), hallucination-prone individuals, and/or unaffected relatives of patients with schizophrenia, (iii) studies including participants without any established clinical diagnosis of neurological and psychiatric condition according to the Diagnostic and Statistical Manual of Mental Disorders DSM-5 (or DSM-IV) criteria, (iv) studies using either self- or source-monitoring experimental paradigms and providing clear information regarding the task used, (v) studies with a within-group design (studying correlation between symptom severity and self-recognition performance) or between-group design (studying self-recognition difference between subclinical and control groups) and (vi) studies providing sufficient statistical indices for self-recognition correct responses (means \pm standard deviations or correlation coefficients \pm variance).

2.1.2. Search strategy

We searched for articles in the PubMed, ScienceDirect and PsycINFO databases with no limitation of date until June 22th, 2019.

Combination of the following keywords were used: “(((source) AND (monitoring OR memory)) OR ((internal) AND (memory OR monitoring)) OR ((self) AND (memory OR monitoring)) OR ((reality) AND (memory OR monitoring))) AND ((psychosis OR psychotic OR schizophrenia) AND (risk OR prodrom* OR predict OR transition OR conversion OR relatives)) OR ((schizotyp*) AND (Ultra High Risk) AND (UHR) AND (Brief Limited Intermittent Psychotic Symptoms) AND (BLIPS) AND (Attenuated Psychotic Symptoms) AND (APS) AND (At Risk Mental States for Psychosis) AND (attenuated symptoms) AND (prepsycho*) AND (hallucination prone*) AND (genetic risk) AND (clinical high risk) AND (basic symptoms))”. Additional references were retrieved by cross-referencing the reference lists of selected articles. The “similar articles” function in PubMed was also employed

although no additional references were identified in this manner.

After excluding duplicate publications, two reviewers (authors LL, CD) independently screened the title, abstract and keywords of each study to apply the inclusion criteria. In a second time, the same procedure was applied to the full text of eligible studies. Discrepancies between reviewers were resolved by discussion with a third author (MM). Study selection is described in Figure 1 (PRISMA diagram).

2.1.3. Data extraction

Authors LL and CD independently extracted the following data: (i) demographic variables (sample size, mean age, gender ratio), (ii) population studied (ARMS, hallucination-prone individuals or unaffected relatives), (iii) study design and type of self-recognition task, and (iv) statistical indices regarding correct discrimination of self vs. other sources (i.e., self-recognition correct responses).

When data were missing, the concerned authors were contacted for additional data request. We ensured that different participants were included in the different reports from the same research groups. To measure the overall quality of the included studies, a global rating score was calculated for each study by two independent author (LL, CD) using the Standard Quality Assessment (QualSyst tool (Kmet et al., 2004)).

2.2. Meta-analysis

2.2.1. Outcome

All statistical analyses were carried out using R Studio software version 1.0.143 (R Core Team, 2018). Mathematical equations used to compute effect size are presented in Supplementary Material. The alpha level for significance was set at $p < 0.05$.

When provided, we extracted means and standard deviations (SD) for correct recognitions (i.e., accuracy) in self- and source-monitoring tasks in both control group and subclinical groups. We calculated the Cohen's d effect size with 95% confidence intervals (95% CI) (Cohen, 2009). For studies investigating correlations between self-recognition scores and psychometric scale scores characteristic of the subclinical group, we extracted correlation coefficients (Pearson's r) and variance (Vr) and transformed these values into Cohen's d and

variance (Vd) (Borenstein et al., 2010). When variances for Pearson's r were not available, we estimated them using Campbell's calculator (Polanin & Snijlsteit, 2016). Regarding Spearman correlation coefficients (ρ), same transformations were applied since ρ are equivalent to Pearson's r using rank data or are slightly smaller if the data follow a binomial distribution (Gilpin, 1993). Given the small sample size, Cohen's d were finally converted into Hedges' g (Hoyt & Del Re, 2018), which use pooled weighted standard deviations instead of pooled standard deviation.

When studies reported scores on multiple outcome measures with no available overall effect but multiple dependent effect-sizes (ES) (e.g., using stimuli with multiple emotional valence or presenting different levels of distortion in self-monitoring experimental paradigm), these were aggregated prior to analysis so that each independent samples from one study contributed only to one single ES. To this end, the univariate procedure described by Gleser & Olkin (Cooper et al., 2009) was used with an imputation of $r= 0.5$, a conservative and typical starting correlation value for aggregating psychologically-based ES (Wampold et al., 1997). Then, all ES were computed to derive an overall summary effect.

As methods and sample characteristics differed across included studies, a random-effect approach was used to model the variability of the summary effect among the true ES of individual studies. We interpreted the magnitude of summary ES (g) using Cohen's interpretative guidelines (0.2= small ES; 0.5= medium ES; 0.8= large ES (Cohen, 2009).

The overall summary ES was represented by a forest plot. In case of visual heterogeneity across studies, variances of the true ES were quantified by Tau² test. The proportion of the observed variance reflecting real differences between the true ES were computed by I² heterogeneity statistic. The I² statistic values 25%, 50% and 75% reflected a small, moderate or high degree of heterogeneity, respectively (Higgins et al., 2003).

2.2.2. Publication bias

Publication bias was first assessed by visual inspection of the funnel plot. In case of asymmetry of the funnel plot, a Rank Correlation Test and an Egger's Regression Test were performed to determine the significance of the publication bias. Additionally, a QQ-plot was analysed to identify potential outliers.

2.3. Moderator analysis

Subgroup analyses were performed to assess relevant categorical variables as moderators. Meta-regressions were performed when potential moderators were continuous variables or when the number of studies within each subgroup was not enough to provide necessary statistical power for subgroup analysis according to the moderator.

2.3.1. Meta-regressions

Several factors that might have influenced self-recognition performance were investigated. First, as it has been reported that age may influence self-recognition performances (Henkel et al., 1998), we measured its potential influence on ES. The effect of the type of subclinical group was also investigated as exploratory analysis. Finally, we measured the influence of the methodological quality of studies on ES using the Standard Quality Assessment scores (QualSyst tool (Kmet et al., 2004), Supplementary material S1) as potential moderator. We used mixed-effects meta-regression models to evaluate if these factors accounted for a multiple moderator effect.

2.3.2. Subgroup analysis

In similar fashion to the method described in Brookwell et al. (Brookwell et al., 2013), a first subgroup analysis was carried out to compare studies using self-monitoring and studies using source-monitoring paradigms. To this end, overall effects from two independent meta-analyses were obtained by fitting two separate random-effects models within source- and self-subsets of studies. Then, we combined the true ES and standard errors within each model, to compute one summary ES per model. Finally, we analysed whether the two summary ES differed significantly using a Wald-type test that uses a fixed-effects model.

3. RESULTS

3.1. Studies selection

The primary search yielded 2008 results. Among them, 344 duplicates were removed, and 1644 abstracts were excluded according to the eligibility criteria. The remaining 20 studies were then assessed for eligibility based on full-length articles. Overall, 15 references

were included in the meta-analysis with a total of 1307 subjects (Aldebot Sacks et al., 2012; Alderson-Day et al., 2019; Allen et al., 2006; Brunelin et al., 2007; Garrison et al., 2017; Gawęda et al., 2018; Humpston et al., 2017; Johns et al., 2010; Larøi et al., 2004; Larøi et al., 2005; Marjoram et al., 2006; Peters et al., 2007; Szöke et al., 2009; Versmissen, Janssen, et al., 2007; Versmissen, Myin-Germeys, et al., 2007) (Figure 1).

****Please insert Figure 1 about here****

3.2. Characteristics of selected studies

Among the 15 included studies, 11 used a group comparison design to investigate the mean source-monitoring differences between groups within the psychosis continuum (ARMS (9 studies, $N=188$), hallucination prone individuals (4 studies, $N=66$), unaffected first-degree relatives (4 studies, $N=132$)) (Total $N=386$, mean age 29.2 ± 9.7 ; range 19.2–45.7 years old) and control groups ($N=315$, mean age 29.9 ± 10.2 ; range 20.3–46.7) (Brunelin et al., 2007; Garrison et al., 2017; Gawęda et al., 2018; Johns et al., 2010; Larøi et al., 2004; Larøi et al., 2005; Marjoram et al., 2006; Peters et al., 2007; Szöke et al., 2009; Versmissen, Janssen, et al., 2007; Versmissen, Myin-Germeys, et al., 2007). The 4 remaining studies investigated the correlations between self-recognition and symptoms in ARMS (3 studies, $N=579$) (Aldebot Sacks et al., 2012; Alderson-Day et al., 2019; Humpston et al., 2017) and hallucination-prone (1 study, $N=57$) (Allen et al., 2006) individuals (Total $N=655$, mean age 22.2 ± 3.6 ; range 19.2–27.3. ARMS samples only included individuals with APS and BLIPS).

Types of self-recognition paradigms used across the selected articles were either source-monitoring tasks (11 studies (Aldebot Sacks et al., 2012; Brunelin et al., 2007; Garrison et al., 2017; Larøi et al., 2004; Larøi et al., 2005; Marjoram et al., 2006; Szöke et al., 2009)) or self-monitoring tasks (4 studies (Allen et al., 2006; Johns et al., 2010; Versmissen, Janssen, et al., 2007; Versmissen, Myin-Germeys, et al., 2007)) (Table 1).

****Please insert Table 1 about here****

All studies used verbal, action or drawing recognition paradigms. Details of included studies are provided in Supplementary Material S2.

3.3. Random effect model: self-recognition performance

The present meta-analysis investigated self-recognition performance in populations with no full-blown psychotic symptoms represented across the continuum of psychosis (ARMS, hallucination-prone individuals and unaffected relatives). Overall, 15 studies were eligible for meta-analysis (Aldebot Sacks et al., 2012; Alderson-Day et al., 2019; Allen et al., 2006; Brunelin et al., 2007; Garrison et al., 2017; Gawęda et al., 2018; Humpston et al., 2017; Johns et al., 2010; Larøi et al., 2004; Larøi et al., 2005; Marjoram et al., 2006; Peters et al., 2007; Szöke et al., 2009; Versmissen, Janssen, et al., 2007; Versmissen, Myin-Germeys, et al., 2007). Our analysis associated these populations with small-to-moderate but significant impairments in self-monitoring accuracy ($g=-0.44$ [-0.71; -0.17]), $p= 0.002$). The overall summary effect is depicted in the Forest Plot (Figure 2).

****Please insert Figure 2 about here****

The Q-statistic revealed a significant heterogeneity between ES (QE p -value < 0.05). The amount of true ES variance was evaluated to $\text{Tau}^2= 0.21$. With a moderate degree of uncertainty, a large proportion of this variance reflected true heterogeneity ($I^2= 84.69\%$ [67.48; 94.49]). The Baujat plot (Supplementary Material S2) indicated that one study (Versmissen, Janssen, et al., 2007) mostly influenced the overall summary ES and contributed to its heterogeneity. After removing this outlier, the ES dropped to $g=-0.35$ [-0.59; -0.11] but was still significant ($p= 0.004$).

3.3.1. Publication bias

Visual inspection of the funnel Plot (Figure 3) revealed a slight asymmetry, which was not significant according to the standard Rank Correlation Test (Kendall's Tau= -0.36; $p= 0.06$). We also conducted an Egger's Regression Test that was not significant ($z= -0.71$; $p= 0.47$). Finally, a normal Q-Q plot did not identify any outlier study (Supplementary Material S3).

****Please insert Figure 3 about here****

3.3.2. Moderators analysis

The high heterogeneity of the overall summary ES ($I^2= 84.69\%$) warranted the examination of potential moderators.

Meta-regression did not reveal any effect of age ($\beta_1= -0.21, p= 0.63$) and type of subclinical population ($\beta_{1\text{hallucination-prone}}= -0.53; \beta_{1\text{unaffected first-degree relatives}} = -0.32; \beta_{1\text{ARMS}}= -0.34; \beta_{1\text{ARMS+unaffected first-degree relatives}} = -0.67, p=0.07$) on self-recognition accuracy. No significant effect of the quality of studies on self-recognition scores was observed ($\beta_{1\text{quality}}= -0.46; p=0.72$). The Wald-type test for subgroup analyses indicated that studies using a self-monitoring task ($\beta_{1\text{self-monitoring}}= -0.47; SE=0.35$) showed similar ES than studies using a source-monitoring task ($\beta_{1\text{source-monitoring}}= -0.42; SE=0.38$). The difference between the two summary ES was not significant ($z= -1.33; p=0.89$). Thus, as pictured in the boxplot (Supplementary Material S4), self- and source-monitoring paradigms had a similar effect on the overall summary ES.

Given the high heterogeneity across studies and the absence of any significant effect from investigated moderators (age, type of subclinical group, quality of studies and type of task), a second subgroup analysis was carried out to compare between-group and correlation design subsets. Given that the experiment that mostly contributing to heterogeneity used a correlation design (Szöke et al., 2009) (Supplementary Material S3), we suspected that type of study design may account as a significant moderator. The Wald-type test indicated that between-group ($\beta_{1\text{between-group}}= -0.54; SE= 0.191$) showed larger negative ES than correlation studies ($\beta_{1\text{correlation}}= -0.15; SE= 0.06$). The difference between the two ES was significant ($z= -2.52; p= 0.04$). As pictured in the boxplot (Supplementary Material S4), the type of study design strongly influenced the overall summary ES, and its magnitude was mostly driven by between-groups studies.

4. DISCUSSION

To the best of our knowledge, this is the first meta-analysis investigating self-recognition ability in populations with no full-blown psychotic symptoms represented across the continuum of psychosis. The main finding is that these individuals display significant self-recognition deficits compared to healthy controls, with small-to-moderate magnitude effect size. The deficit was not influenced by age, type of population (ARMS, hallucination-prone individuals, unaffected first-degree relatives), or type of self-recognition paradigm (self-monitoring vs. source-monitoring tasks).

4.1. Self-recognition deficits across the continuum of psychosis

Regarding the type of population, the deficit in the included subjects with an ARMS (here, APS and BLIPS) intimates that a failure in recognizing self-generated information is associated with attenuated psychotic symptoms. Additionally, the deficit observed in unaffected first-degree relatives suggests that self-recognition impairment may be associated with an increased risk of familial liability to psychosis, independently from the presence of psychotic symptoms. Finally, we replicated previous findings of self-recognition deficits in hallucination-prone individuals (Brookwell et al., 2013), which suggest that self-recognition deficit may *also* serve as a potential marker of risk for hallucinations. Regarding the type of self-recognition paradigm, we observed that the magnitude of the deficit was similar in both self-monitoring and source-monitoring tasks. Although source-monitoring tasks present a memory component missing in self-monitoring paradigms, this observation confirms that both experimental paradigms may index a common cognitive process that is affected in populations with no full-blown psychotic symptoms. By contrast, a previous meta-analysis (Brookwell et al., 2013) failed to associate hallucinatory experiences with self-recognition deficit within a subset of studies using a self-monitoring paradigm. Nevertheless, the negative result may be explained by the small number of included studies using a self-monitoring experimental paradigm (2 studies out of 27).

More broadly, our findings are consistent with previous results demonstrating additional cognitive impairments in unaffected relatives of patients with schizophrenia (Faraone et al., 1995; Green et al., 1997; Saoud et al., 2000), hallucination-prone individuals (Alderson-Day et al., 2019) and subjects with an ARMS (Eisenacher et al., 2018; Ohmuro et al., 2018). Since many studies have shown large self-recognition impairments in patients with schizophrenia (reviewed in (Brookwell et al., 2013; Waters et al., 2012), the present analysis argues for a cognitive continuum regarding self-recognition abilities from non-clinical subjects to full-blown psychosis. As compared to the moderate-to-large self-recognition deficit described in patients with schizophrenia ($ES=-0.73$ in (Waters et al., 2012), the present small-to-moderate effect ($ES=-0.44$) suggests this deficit to vary from less to more across non-clinical and clinical subjects. Future studies are warranted to directly compare self-recognition performances between patients with diagnosed schizophrenia and subjects with no full-blown psychotic symptoms represented across the continuum for psychosis.

Although self-recognition deficits have been associated with positive symptoms of schizophrenia, an inverse correlation has also been reported between source-monitoring errors and negative symptoms (Brébion et al., 2012; Brébion et al., 2002). However, investigating correlations between the severity of negative dimension and source-monitoring performances in first-degree relatives of patients with schizophrenia led to non-significant results (Szöke et al., 2009). Otherwise, nor did this study find any correlation between positive dimension and source-monitoring scores. It would be fruitful to examine potential relationships between positive and negative dimensions and self-recognition scores in various subclinical and non-clinical populations represented across the continuum for psychosis.

4.2. Neurobiological substrates

Self-recognition deficits observed in individuals with an ARMS, hallucination-prone individuals and unaffected first-degree relatives suggest that these populations may share neural alterations with patients with diagnosed psychosis.

In healthy subjects, frontotemporal connectivity is thought to underpin self-recognition processes. On the one hand, activation of the prefrontal cortex (PFC) has been associated with correct attributions of internally produced information (Mitchell & Johnson, 2009; Sugimori et al., 2014). On the other hand, activation of the superior temporal gyrus (STG) has been associated with perception of externally-produced but not internally-produced information (Allen et al., 2007; Simons et al., 2006; Sugimori et al., 2014). In patients with schizophrenia, the main hypothesis for the self-recognition deficit involves a defective prefrontal lobe activation that fails to inhibit the temporal lobe and lead, in turn, to an external misattribution of self-generated materials (Ford & Mathalon, 2005; Frith, 1996). The relationship between self-recognition deficits and frontotemporal functional disruption in patients with schizophrenia is supported by imaging studies demonstrating a significant association between auditory hallucinations, source-monitoring errors and STG hyperactivity (Jardri et al., 2011; Sugimori et al., 2014). Furthermore, repeated sessions of non-invasive electrical brain stimulation applied over the STG and the PFC have been shown to induce a significant increase of source-monitoring performance, as well as a reduction of auditory hallucination in patients (Brunelin, Poulet, et al., 2006; Mondino et al., 2015).

Even it remains speculative, one can hypothesized that the significant self-recognition deficit in individuals with no full-blown psychosis is associated with comparable

frontotemporal functional alteration. However, at present, only one study assessed neurobiological correlates of source-monitoring deficit in ARMS. This study demonstrated an activation in anterior PFC during source-monitoring but less activation in subjects with higher schizotypal traits (Lagioia et al., 2011). Toward a better characterization of self-recognition processes, future studies are warranted to investigate the neural mechanisms associated in these individuals.

4.3. Limitations

Several limits should be acknowledged. First, our main outcome was the number of correct responses at self- and source- monitoring tasks. This did not allow investigating the directionality of the recognition bias, i.e., whether individuals misattribute internal information as external (externalization bias) or misattribute external information as internal (internalization bias). Consequently, while we reported a failure in self-recognition in ARMS, hallucination-prone individuals and unaffected first-degree relatives, we were not able to conclude if one bias over another is more specific to these populations. Additionally, since Brookwell et al. (Brookwell et al., 2013) concluded about a specific externalization bias in patients with schizophrenia and hallucination-prone subjects, our analysis involved scores indexing both misattribution biases, which may account for the small overall effect.

Second, the analyses reported a large heterogeneity in the aggregated analysis that was not explained by between-population (i.e., ARMS, hallucination-prone individuals, unaffected first-degree relatives) differences. Between-tasks analysis only showed a trend for significant difference between self and source paradigms. However, the low number of studies included involved an imbalance across groups in the task used (e.g., there is no “hallucination-prone group” with task “self”), which represents a potential bias to the negative results on between-populations and between-tasks differences. The analyses rather indicate the large amount of heterogeneity to be explained by the type of design used across studies (between-groups vs. correlation designs). We observed that the magnitude of the deficit was mostly driven by between-groups studies. Thus, the inclusion of 4 correlations studies in the meta-analysis may represent a potential limitation. However, by assessing correlations between self-recognition measures and psychometric scale scores, these studies establish a more detailed description of the relationship between the psychometric parameter and the self-recognition deficit.

Third, 2 studies included medicated subclinical individuals (Gawęda et al., 2018; Johns et al., 2010) and three studies did not provide information on subjects' medication

status (Aldebot Sacks et al., 2012; Versmissen, Janssen, et al., 2007; Versmissen, Myin-Germeys, et al., 2007). The medication status seems particularly important since antipsychotic medication have been associated with improvement of self-recognition abilities in patients with schizophrenia (Keefe et al., 2003). Further studies are required to investigate the effects of psychotropic medication on self-recognition performance.

Fourth, this meta-analysis included studies with different task designs including words, actions, drawings and voices items. This experimental diversity may participate to the large heterogeneity between effect-sizes. However, a previous meta-analysis revealing a significant self-recognition impairment in patients with schizophrenia included studies using a wide variety of paradigms, including action, words or speech recognition tasks (Waters et al., 2012). This indicates that the requirement to make a self-recognition judgment underscores the deficit, regardless of the experimental paradigm.

Finally, the inclusion of three different subgroups may represent a potential limitation in this study. Indeed, self-recognition seems significant for the single ARMS group, whereas the other groups display negative non-significant effect-sizes. Nevertheless, meta-regression showed a lack of significant effect of the type of subgroup, arguing for continuity between subgroups regarding self-recognition deficit.

5. CONCLUSION

Several populations with no full-blown psychotic symptoms represented across the continuum of psychosis display similar deficits for multiple self-recognition experimental paradigms. Future studies involving subclinical and non-clinical subjects across the continuum, patients with first-episode of psychosis and patients with schizophrenia are warranted to compare such deficit in different stages of the continuum. In the context of growing interest for early intervention, we recommend 2-years follow-up studies (Nelson et al., 2011) to address whether early self-recognition deficit could predict potential transition to psychosis in subclinical and non-clinical populations. Furthermore, developing remediative approaches that specifically target self-recognition abilities might be relevant for these individuals. In addition, future studies may benefit from assessing directional source-recognition inversions scores to increase their statistical power and may also benefit from including drug-naïve subclinical individuals, which may provide more reliable measures of

self-recognition performances. Finally, neuroimaging and neurostimulation studies are required to explore the neurobiological correlates of self-recognition deficit across multiple in populations with no full-blown psychotic symptoms represented across the continuum.

ACKNOWLEDGMENT

We are particularly grateful to authors who replied to our queries and provide us with supplementary results when available.

FUNDING

This research did not receive any specific grant from funding agencies in the public, commercial, or not-for-profit sectors.

CONFLICT OF INTEREST

None of the authors have a financial interest in any organization or commercial product providing financial support for this research.

REFERENCES

- Aldebot Sacks, S., Weisman de Mamani, A. G., & Garcia, C. P. (2012). Associations between cognitive biases and domains of schizotypy in a non-clinical sample. *Psychiatry Research, 196*(1), 115–122. <https://doi.org/10.1016/j.psychres.2011.09.019>
- Alderson-Day, B., Smailes, D., Moffatt, J., Mitrenga, K., Moseley, P., & Fernyhough, C. (2019). Intentional inhibition but not source memory is related to hallucination-proneness and intrusive thoughts in a university sample. *Cortex; a Journal Devoted to the Study of the Nervous System and Behavior, 113*, 267–278. <https://doi.org/10.1016/j.cortex.2018.12.020>
- Allen, P., Amaro, E., Fu, C. H. Y., Williams, S. C. R., Brammer, M. J., Johns, L. C., & McGuire, P. K. (2007). Neural correlates of the misattribution of speech in schizophrenia. *The British Journal of Psychiatry: The Journal of Mental Science, 190*, 162–169. <https://doi.org/10.1192/bjp.bp.106.025700>

- Allen, P., Freeman, D., Johns, L., & McGuire, P. (2006). Misattribution of self-generated speech in relation to hallucinatory proneness and delusional ideation in healthy volunteers. *Schizophrenia Research*, *84*(2–3), 281–288.
<https://doi.org/10.1016/j.schres.2006.01.021>
- Bentall, R. P. (1990). The illusion of reality: A review and integration of psychological research on hallucinations. *Psychological Bulletin*, *107*(1), 82–95.
- Bora, E., & Murray, R. M. (2014). Meta-analysis of cognitive deficits in ultra-high risk to psychosis and first-episode psychosis: Do the cognitive deficits progress over, or after, the onset of psychosis? *Schizophrenia Bulletin*, *40*(4), 744–755.
<https://doi.org/10.1093/schbul/sbt085>
- Borenstein, M., Hedges, L. V., Higgins, J. P. T., & Rothstein, H. R. (2010). A basic introduction to fixed-effect and random-effects models for meta-analysis. *Research Synthesis Methods*, *1*(2), 97–111. <https://doi.org/10.1002/jrsm.12>
- Brébion, G., Ohlsen, R. I., Bressan, R. A., & David, A. S. (2012). Source memory errors in schizophrenia, hallucinations and negative symptoms: A synthesis of research findings. *Psychological Medicine*, *42*(12), 2543–2554.
<https://doi.org/10.1017/S003329171200075X>
- Brébion, G., Gorman, J. M., Amador, X., Malaspina, D., & Sharif, Z. (2002). Source monitoring impairments in schizophrenia: Characterisation and associations with positive and negative symptomatology. *Psychiatry Research*, *112*(1), 27–39.
[https://doi.org/10.1016/S0165-1781\(02\)00187-7](https://doi.org/10.1016/S0165-1781(02)00187-7)
- Brébion, G., Larøi, F., & Van der Linden, M. (2010). Associations of hallucination proneness with free-recall intrusions and response bias in a nonclinical sample. *Journal of Clinical and Experimental Neuropsychology*, *32*(8), 847–854.
<https://doi.org/10.1080/13803391003596397>

- Brookwell, M. L., Bentall, R. P., & Varese, F. (2013). Externalizing biases and hallucinations in source-monitoring, self-monitoring and signal detection studies: A meta-analytic review. *Psychological Medicine*, *43*(12), 2465–2475.
<https://doi.org/10.1017/S0033291712002760>
- Brunelin, d'Amato, T., Brun, P., Bediou, B., Kallel, L., Senn, M., Poulet, E., & Saoud, M. (2007). Impaired verbal source monitoring in schizophrenia: An intermediate trait vulnerability marker? *Schizophrenia Research*, *89*(1–3), 287–292.
<https://doi.org/10.1016/j.schres.2006.08.028>
- Brunelin, J., Combris, M., Poulet, E., Kallel, L., D'Amato, T., Dalery, J., & Saoud, M. (2006). Source monitoring deficits in hallucinating compared to non-hallucinating patients with schizophrenia. *European Psychiatry: The Journal of the Association of European Psychiatrists*, *21*(4), 259–261. <https://doi.org/10.1016/j.eurpsy.2006.01.015>
- Brunelin, J., Poulet, E., Bediou, B., Kallel, L., Dalery, J., D'amato, T., & Saoud, M. (2006). Low frequency repetitive transcranial magnetic stimulation improves source monitoring deficit in hallucinating patients with schizophrenia. *Schizophrenia Research*, *81*(1), 41–45. <https://doi.org/10.1016/j.schres.2005.10.009>
- Chien, P. F., Khan, K. S., & Siassakos, D. (2012). Registration of systematic reviews: PROSPERO: Editorial. *BJOG: An International Journal of Obstetrics & Gynaecology*, *119*(8), 903–905. <https://doi.org/10.1111/j.1471-0528.2011.03242.x>
- Cohen, J. (2009). *Statistical power analysis for the behavioral sciences* (2. ed., reprint). Psychology Press.
- Cooper, H., Hedges, L. V., & Valentine, J. C. (2009). *The Handbook of Research Synthesis and Meta-Analysis*. Russell Sage Foundation.
- Eisenacher, S., Rausch, F., Ainser, F., Englisch, S., Becker, A., Mier, D., Fenske, S., Meyer-Lindenberg, A., Kirsch, P., & Zink, M. (2018). Early cognitive basic symptoms are

accompanied by neurocognitive impairment in patients with an “at-risk mental state” for psychosis. *Early Intervention in Psychiatry*, 12(4), 586–595.

<https://doi.org/10.1111/eip.12350>

Faraone, S. V., Seidman, L. J., Kremen, W. S., Pepple, J. R., Lyons, M. J., & Tsuang, M. T. (1995). Neuropsychological functioning among the nonpsychotic relatives of schizophrenic patients: A diagnostic efficiency analysis. *Journal of Abnormal Psychology*, 104(2), 286–304.

Ford, J. M., & Mathalon, D. H. (2005). Corollary discharge dysfunction in schizophrenia: Can it explain auditory hallucinations? *International Journal of Psychophysiology: Official Journal of the International Organization of Psychophysiology*, 58(2–3), 179–189.

<https://doi.org/10.1016/j.ijpsycho.2005.01.014>

Frith, C. D. (1996). Neuropsychology of schizophrenia, what are the implications of intellectual and experiential abnormalities for the neurobiology of schizophrenia? *British Medical Bulletin*, 52(3), 618–626.

<https://doi.org/10.1093/oxfordjournals.bmb.a011571>

Frith, C. D., Blakemore, S. J., & Wolpert, D. M. (2000). Abnormalities in the awareness and control of action. *Philosophical Transactions of the Royal Society of London. Series B, Biological Sciences*, 355(1404), 1771–1788. <https://doi.org/10.1098/rstb.2000.0734>

Frith, C. D., & Done, D. J. (1988). Towards a neuropsychology of schizophrenia. *The British Journal of Psychiatry: The Journal of Mental Science*, 153, 437–443.

Fusar-Poli, P., Borgwardt, S., Bechdolf, A., Addington, J., Riecher-Rössler, A., Schultze-Lutter, F., Keshavan, M., Wood, S., Ruhrmann, S., Seidman, L. J., Valmaggia, L., Cannon, T., Velthorst, E., De Haan, L., Cornblatt, B., Bonoldi, I., Birchwood, M., McGlashan, T., Carpenter, W., ... Yung, A. (2013). The psychosis high-risk state: A

- comprehensive state-of-the-art review. *JAMA Psychiatry*, 70(1), 107–120.
<https://doi.org/10.1001/jamapsychiatry.2013.269>
- Fusar-Poli, P., Deste, G., Smieskova, R., Barlati, S., Yung, A. R., Howes, O., Stieglitz, R.-D., Vita, A., McGuire, P., & Borgwardt, S. (2012). Cognitive functioning in prodromal psychosis: A meta-analysis. *Archives of General Psychiatry*, 69(6), 562–571.
<https://doi.org/10.1001/archgenpsychiatry.2011.1592>
- Garrison, J. R., Moseley, P., Alderson-Day, B., Smailes, D., Fernyhough, C., & Simons, J. S. (2017). Testing continuum models of psychosis: No reduction in source monitoring ability in healthy individuals prone to auditory hallucinations. *Cortex*, 91, 197–207.
<https://doi.org/10.1016/j.cortex.2016.11.011>
- Gawęda Ł, Li E, Lavoie S, Whitford TJ, Moritz S, Nelson B. (2018). Impaired action self-monitoring and cognitive confidence among ultra-high risk for psychosis and first-episode psychosis patients. *Eur Psychiatry*, 47, 67-75. doi:
10.1016/j.eurpsy.2017.09.003
- Gilpin, A. R. (1993). Table for Conversion of Kendall'S Tau to Spearman'S Rho Within the Context of Measures of Magnitude of Effect for Meta-Analysis. *Educational and Psychological Measurement*, 53(1), 87–92.
<https://doi.org/10.1177/0013164493053001007>
- Giuliano, A. J., Li, H., Mesholam-Gately, R. I., Sorenson, S. M., Woodberry, K. A., & Seidman, L. J. (2012). Neurocognition in the psychosis risk syndrome: A quantitative and qualitative review. *Current Pharmaceutical Design*, 18(4), 399–415.
- Green, M. F., Nuechterlein, K. H., & Breitmeyer, B. (1997). Backward masking performance in unaffected siblings of schizophrenic patients. Evidence for a vulnerability indicator. *Archives of General Psychiatry*, 54(5), 465–472.

- Gupta, T., DeVylder, J. E., Auerbach, R. P., Schiffman, J., & Mittal, V. A. (2018). Speech illusions and working memory performance in non-clinical psychosis. *Schizophrenia Research, 195*, 391–395. <https://doi.org/10.1016/j.schres.2017.10.031>
- Henkel, L. A., Johnson, M. K., & De Leonardis, D. M. (1998). Aging and source monitoring: Cognitive processes and neuropsychological correlates. *Journal of Experimental Psychology: General, 127*(3), 251–268. <https://doi.org/10.1037/0096-3445.127.3.251>
- Higgins, J. P. T., Thompson, S. G., Deeks, J. J., & Altman, D. G. (2003). Measuring inconsistency in meta-analyses. *BMJ: British Medical Journal, 327*(7414), 557–560.
- Hoyt, W. T., & Del Re, A. C. (2018). Effect size calculation in meta-analyses of psychotherapy outcome research. *Psychotherapy Research: Journal of the Society for Psychotherapy Research, 28*(3), 379–388. <https://doi.org/10.1080/10503307.2017.1405171>
- Humpston, C. S., Linden, D. E. J., & Evans, L. H. (2017). Deficits in reality and internal source monitoring of actions are associated with the positive dimension of schizotypy. *Psychiatry Research, 250*, 44–49. <https://doi.org/10.1016/j.psychres.2017.01.063>
- Jardri, R., Pouchet, A., Pins, D., & Thomas, P. (2011). Cortical activations during auditory verbal hallucinations in schizophrenia: A coordinate-based meta-analysis. *The American Journal of Psychiatry, 168*(1), 73–81. <https://doi.org/10.1176/appi.ajp.2010.09101522>
- Johns, L. C., Allen, P., Valli, I., Winton-Brown, T., Broome, M., Woolley, J., Tabraham, P., Day, F., Howes, O., Wykes, T., & McGuire, P. (2010). Impaired verbal self-monitoring in individuals at high risk of psychosis. *Psychological Medicine, 40*(9), 1433–1442. <https://doi.org/10.1017/S0033291709991991>
- Johns, L. C., & van Os, J. (2001). The continuity of psychotic experiences in the general population. *Clinical Psychology Review, 21*(8), 1125–1141.

- Johnson, M. K., Hashtroudi, S., & Lindsay, D. S. (1993). Source monitoring. *Psychological Bulletin*, *114*(1), 3–28.
- Keefe, R. S. E., Poe, M. P., McEvoy, J. P., & Vaughan, A. (2003). Source monitoring improvement in patients with schizophrenia receiving antipsychotic medications. *Psychopharmacology*, *169*(3–4), 383–389. <https://doi.org/10.1007/s00213-003-1476-0>
- Kmet, L. M., Lee, R. C., Cook, L. S., Alberta Heritage Foundation for Medical Research, University of Calgary, Faculty of Medicine, & Calgary Health Region. (2004). *Standard quality assessment criteria for evaluating primary research papers from a variety of fields*. Alberta Heritage Foundation for Medical Research.
- Lagioia, A., Eliez, S., Schneider, M., Simons, J. S., Van der Linden, M., & Debbané, M. (2011). Neural correlates of reality monitoring during adolescence. *NeuroImage*, *55*(3), 1393–1400. <https://doi.org/10.1016/j.neuroimage.2010.12.058>
- Larøi, F., Van der Linden, M., & Marczewski, P. (2004). The effects of emotional salience, cognitive effort and meta-cognitive beliefs on a reality monitoring task in hallucination-prone subjects. *The British Journal of Clinical Psychology*, *43*(Pt 3), 221–233. <https://doi.org/10.1348/0144665031752970>
- Larøi, Frank, Collignon, O., & Van der Linden, M. (2005). Source monitoring for actions in hallucination proneness. *Cognitive Neuropsychiatry*, *10*(2), 105–123. <https://doi.org/10.1080/13546800344000354>
- Marjoram, D., Miller, P., McIntosh, A. M., Cunningham Owens, D. G., Johnstone, E. C., & Lawrie, S. (2006). A neuropsychological investigation into “Theory of Mind” and enhanced risk of schizophrenia. *Psychiatry Research*, *144*(1), 29–37. <https://doi.org/10.1016/j.psychres.2006.01.008>
- McGorry, P. D., Hartmann, J. A., Spooner, R., & Nelson, B. (2018). Beyond the “at risk mental state” concept: Transitioning to transdiagnostic psychiatry. *World Psychiatry*:

Official Journal of the World Psychiatric Association (WPA), 17(2), 133–142.

<https://doi.org/10.1002/wps.20514>

McGorry, P. D., & Killackey, E. J. (2002). Early intervention in psychosis: A new evidence based paradigm. *Epidemiologia E Psichiatria Sociale*, 11(4), 237–247.

Mitchell, K. J., & Johnson, M. K. (2009). Source monitoring 15 years later: What have we learned from fMRI about the neural mechanisms of source memory? *Psychological Bulletin*, 135(4), 638–677. <https://doi.org/10.1037/a0015849>

Moher, D., Liberati, A., Tetzlaff, J., Altman, D. G., & PRISMA Group. (2009). Preferred reporting items for systematic reviews and meta-analyses: The PRISMA statement. *PLoS Medicine*, 6(7), e1000097. <https://doi.org/10.1371/journal.pmed.1000097>

Mondino, M., Haesebaert, F., Poulet, E., Suaud-Chagny, M.-F., & Brunelin, J. (2015). Fronto-temporal transcranial Direct Current Stimulation (tDCS) reduces source-monitoring deficits and auditory hallucinations in patients with schizophrenia. *Schizophrenia Research*, 161(2–3), 515–516. <https://doi.org/10.1016/j.schres.2014.10.054>

Morrison, A. P., Wells, A., & Nothard, S. (2000). Cognitive factors in predisposition to auditory and visual hallucinations. *The British Journal of Clinical Psychology*, 39 (Pt 1), 67–78.

Morrison, Anthony P., French, P., Walford, L., Lewis, S. W., Kilcommons, A., Green, J., Parker, S., & Bentall, R. P. (2004). Cognitive therapy for the prevention of psychosis in people at ultra-high risk: Randomised controlled trial. *The British Journal of Psychiatry: The Journal of Mental Science*, 185, 291–297.

<https://doi.org/10.1192/bjp.185.4.291>

Nelson, B., Yuen, K., & Yung, A. R. (2011). Ultra high risk (UHR) for psychosis criteria: Are there different levels of risk for transition to psychosis? *Schizophrenia Research*, 125(1), 62–68. <https://doi.org/10.1016/j.schres.2010.10.017>

- Ohmuro, N., Katsura, M., Obara, C., Kikuchi, T., Hamaie, Y., Sakuma, A., Iizuka, K., Ito, F., Matsuoka, H., & Matsumoto, K. (2018). The relationship between cognitive insight and cognitive performance among individuals with at-risk mental state for developing psychosis. *Schizophrenia Research*, *192*, 281–286.
<https://doi.org/10.1016/j.schres.2017.04.031>
- Owen, M. J., Sawa, A., & Mortensen, P. B. (2016). Schizophrenia. *Lancet (London, England)*, *388*(10039), 86–97. [https://doi.org/10.1016/S0140-6736\(15\)01121-6](https://doi.org/10.1016/S0140-6736(15)01121-6)
- Peters, M. J. V., Smeets, T., Giesbrecht, T., Jelicic, M., & Merckelbach, H. (2007). Confusing action and imagination: Action source monitoring in individuals with schizotypal traits. *The Journal of Nervous and Mental Disease*, *195*(9), 752–757.
<https://doi.org/10.1097/NMD.0b013e318142cc02>
- R Core Team. (2018). *R: A language and environment for statistical computing*.
<https://www.r-project.org/>
- Saoud, M., d'Amato, T., Gutknecht, C., Triboulet, P., Bertaud, J. P., Marie-Cardine, M., Daléry, J., & Rochet, T. (2000). Neuropsychological deficit in siblings discordant for schizophrenia. *Schizophrenia Bulletin*, *26*(4), 893–902.
<https://doi.org/10.1093/oxfordjournals.schbul.a033503>
- Simons, J. S., Davis, S. W., Gilbert, S. J., Frith, C. D., & Burgess, P. W. (2006). Discriminating imagined from perceived information engages brain areas implicated in schizophrenia. *NeuroImage*, *32*(2), 696–703.
<https://doi.org/10.1016/j.neuroimage.2006.04.209>
- Sugimori, E., Mitchell, K. J., Raye, C. L., Greene, E. J., & Johnson, M. K. (2014). Brain mechanisms underlying reality monitoring for heard and imagined words. *Psychological Science*, *25*(2), 403–413. <https://doi.org/10.1177/0956797613505776>

- Szöke, A., Méary, A., Ferchiou, A., Trandafir, A., Leboyer, M., & Schürhoff, F. (2009). Correlations between cognitive performances and psychotic or schizotypal dimensions. *European Psychiatry: The Journal of the Association of European Psychiatrists*, 24(4), 244–250. <https://doi.org/10.1016/j.eurpsy.2008.10.007>
- Verdoux, H., & van Os, J. (2002). Psychotic symptoms in non-clinical populations and the continuum of psychosis. *Schizophrenia Research*, 54(1–2), 59–65.
- Versmissen, D., Janssen, I., Johns, L., McGuire, P., Drukker, M., à Campo, J., Myin-Germeys, I., Van Os, J., & Krabbendam, L. (2007). Verbal self-monitoring in psychosis: A non-replication. *Psychological Medicine*, 37(4), 569–576. <https://doi.org/10.1017/S0033291706009780>
- Versmissen, D., Myin-Germeys, I., Janssen, I., Franck, N., Georgieff, N., a Campo, J., Mengelers, R., van Os, J., & Krabbendam, L. (2007). Impairment of self-monitoring: Part of the endophenotypic risk for psychosis. *The British Journal of Psychiatry. Supplement*, 51, s58-62. <https://doi.org/10.1192/bjp.191.51.s58>
- Wampold, B. E., Mondin, G. W., Moody, M., Stich, F., Benson, K., & Ahn, H. (1997). A meta-analysis of outcome studies comparing bona fide psychotherapies: Empirically, “all must have prizes.” *Psychological Bulletin*, 122(3), 203–215. <https://doi.org/10.1037/0033-2909.122.3.203>
- Waters, F., Woodward, T., Allen, P., Aleman, A., & Sommer, I. (2012). Self-recognition deficits in schizophrenia patients with auditory hallucinations: A meta-analysis of the literature. *Schizophrenia Bulletin*, 38(4), 741–750. <https://doi.org/10.1093/schbul/sbq144>
- Woodward, T. S., Menon, M., & Whitman, J. C. (2007). Source monitoring biases and auditory hallucinations. *Cognitive Neuropsychiatry*, 12(6), 477–494. <https://doi.org/10.1080/13546800701307198>

FIGURES

Figure 1. PRISMA flowchart describing the literature search and screening stages.

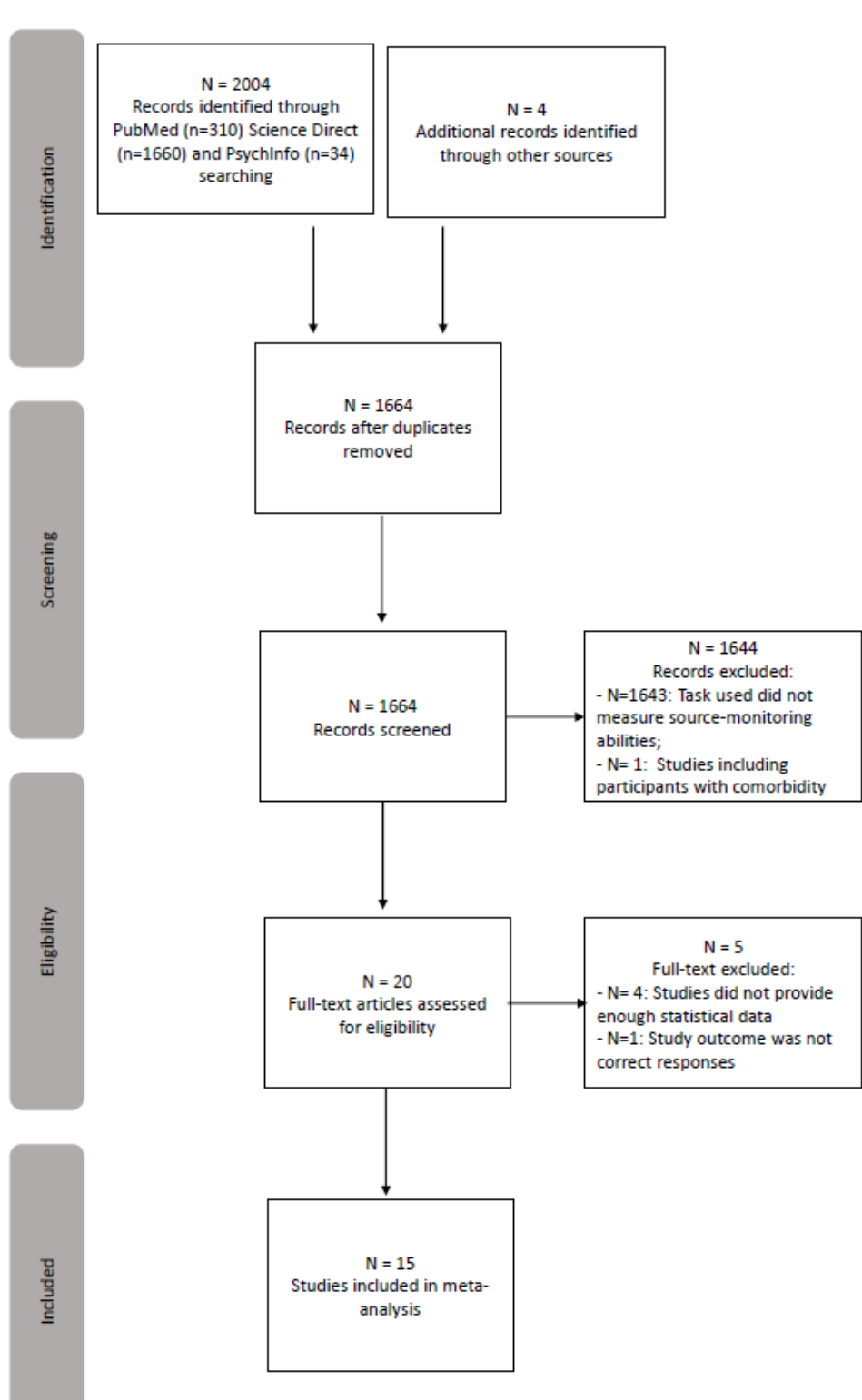


Figure 2. Forest Plot. Effect Size estimates of self-recognition accuracy.
ARMS: At-Risk Mental State

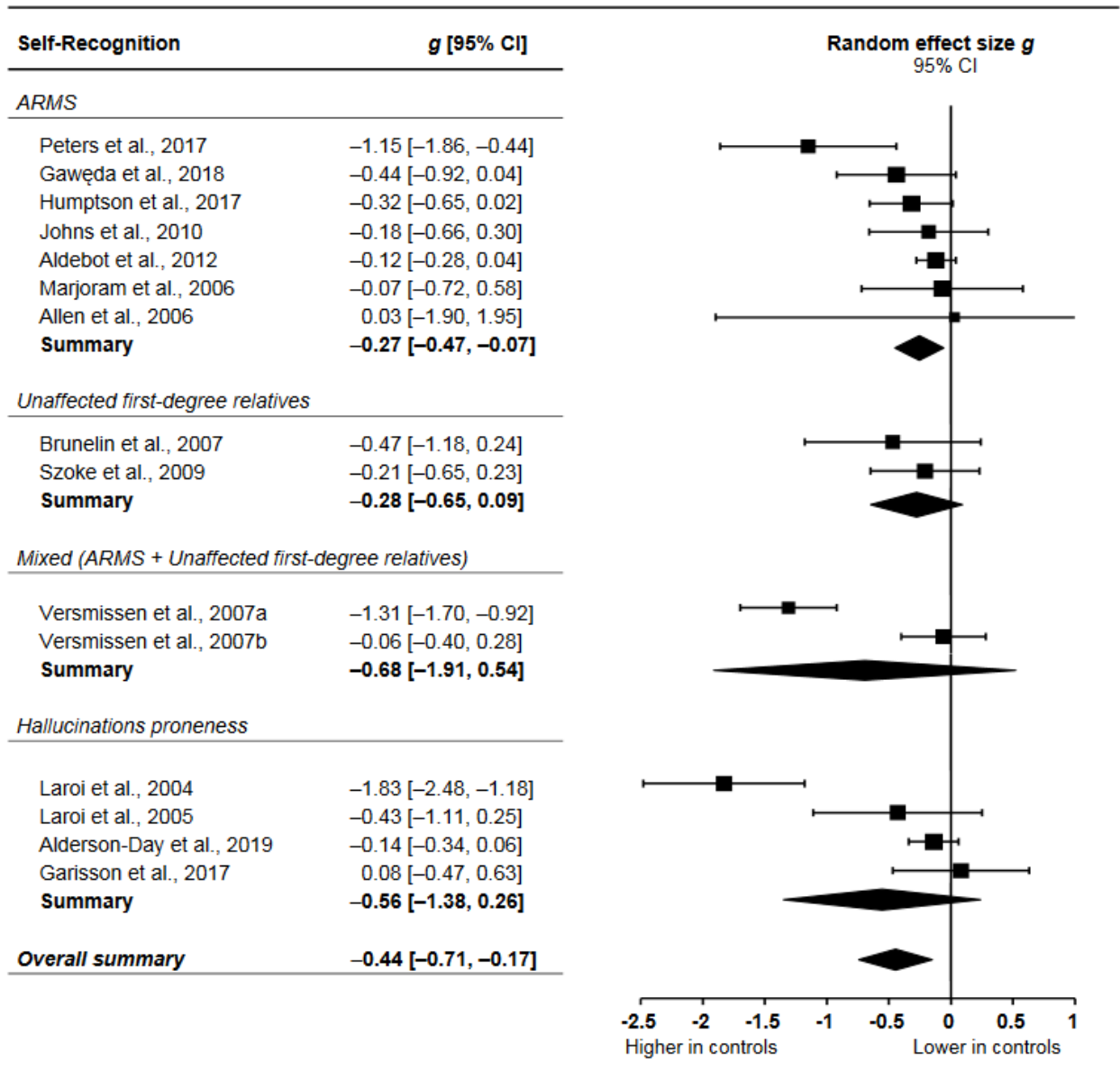
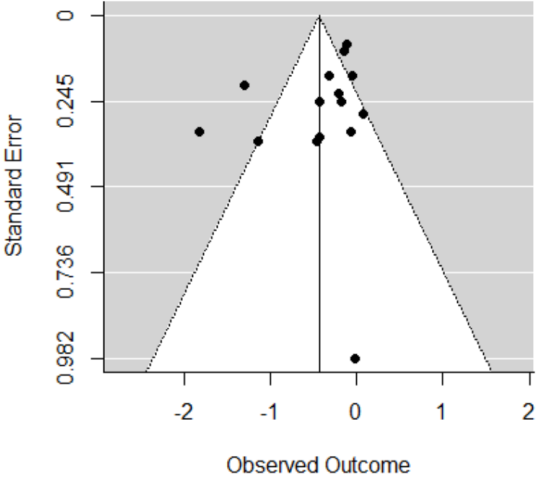


Figure 3. Funnel Plot. Publication bias visualisation



Source-monitoring tasks	Studies
<u>Imagine hearing vs. hear words:</u> Participants had to either hear or imagine hearing words. Then, during the test phase, they had to recognize whether the word was heard, imagined or new.	Brunelin et al., 2007
<u>Word pair completion:</u> Participants are presented with a list of partially completed words phrases. They had to either listen the experimenter completing phrases or complete and read out words by themselves. Then, during the test phase, participants had to recognize whether the word was generated by the experimenter, by themselves or new.	Garrison et al., 2017 Alderson-Day et al., 2019
<u>Self-generated vs. read aloud vs. silently read vs. heard words:</u> The material includes a list of semantic categories as well as words belonging to each category. For each category, participants had to: generate words examples, read the words out loud, read the words silently or listen the experimenter read out the words. Then, during the test phase, participants had to recognize whether words were generated by themselves, read aloud or silently by themselves, read by the experimenter or new.	Szoke et al., 2009
<u>Self-generated vs. experimenter-generated words:</u> Participants are presented with a list of words and had to generate some other words by themselves. Then, during the test phase, participants had to recognize whether the word was generated by themselves, by the experimenter or new.	Aldebot Sacks et al., 2012 Laroi et al., 2004
<u>Imagine performing vs. perform actions:</u> Participants had to either perform or imagine performing actions. Then, during the test phase, participants had to recognize whether the action was performed or imagined.	Gaweda et al., 2018 Peters et al., 2017
<u>Perform vs. watch performing actions:</u> Participants had to either perform or watch performing actions. Then, during the test phase, they had to recognize if actions were performed by themselves, by the experimenter or new.	Humpston et al., 2019
<u>Imagine performing vs. perform vs. watch performing vs. imagine watching performing actions:</u> Participants had to imagine performing action, perform actions by themselves, watch the experimenter performing actions or imagine themselves watching the experimenter performing actions. Then, during the test phase, participants had to recognize whether actions were performed by themselves or by the experimenter, or whether they imagined themselves or the experimenter performing the actions.	Laroi et al., 2005
<u>Self vs. other-generated drawings:</u> Participants had to generate drawings. Then, during the test phase, they had to identify their own drawings from drawings generated by other people.	Marjoram et al., 2006

Self-monitoring tasks	
<p><u>Self vs. other words:</u> Participants are presented with a list of words they have to read aloud in a microphone. The speech was fed back through headphones. In some of the trials, the pitch were unchanged or distorted with various levels of distortion. In other trials, participants heard someone else's voice instead of their voice. Participants had to indicate if the speech they heard was generated by themselves or by someone else.</p>	<p>Versmissen et al., 2007a Versmissen et al., 2007b Johns et al., 2010</p>
<p><u>Self vs. other pre-recorded words:</u> Subjects had to listen pre-recorded words with varying source (self/other) and acoustic quality (distortion level). Subjects had to indicate if the words were spoken in their own or another voice.</p>	<p>Allen et al., 2006</p>

Supplementary Material S3

Cohen's d calculation for between-group studies:

Cohen's d and variance have been calculated using *mes* function from the *compute.es* package.

$$d = \frac{\bar{X}_1 - \bar{X}_2}{sd_{pooled}} \quad \text{with} \quad sd_{pooled} = \sqrt{\frac{(n_1 - 1)S_1^2 + (n_2 - 1)S_2^2}{n_1 + n_2 - 2}}$$

Cohen's d calculation for correlation studies:

Correlation coefficients (*Pearson's r*) and variance (*Vr*) were transformed into Cohen's *d* and variance (*Vd*) using *res* function (*compute.es* package).

$$d = \frac{2r}{\sqrt{1 - r^2}}$$

To transform Pearson's r variances to Cohen's d variances:

$$V_d = \frac{4V_r}{(1 - r^2)^3}$$

Cohen's d conversion into Hedges' g:

$$g = J \cdot d \quad \text{and} \quad V_g = J^2 \cdot V_d \quad \text{with} \quad J = 1 - \frac{3}{4 \cdot df - 1}$$

Wald-Type test for subgroup analysis:

A random-effect omnibus test was conducted using the *mareg* function of the MAd package (an implementation of the *metafor* package's *rma* function).

$$z = \frac{\mu_1 - \mu_2}{\sqrt{SE[\mu_1]^2 + SE[\mu_2]^2}}$$

Plots:

Meta-analysis's plots were constructed using *metafor* and *ggplot2* packages.

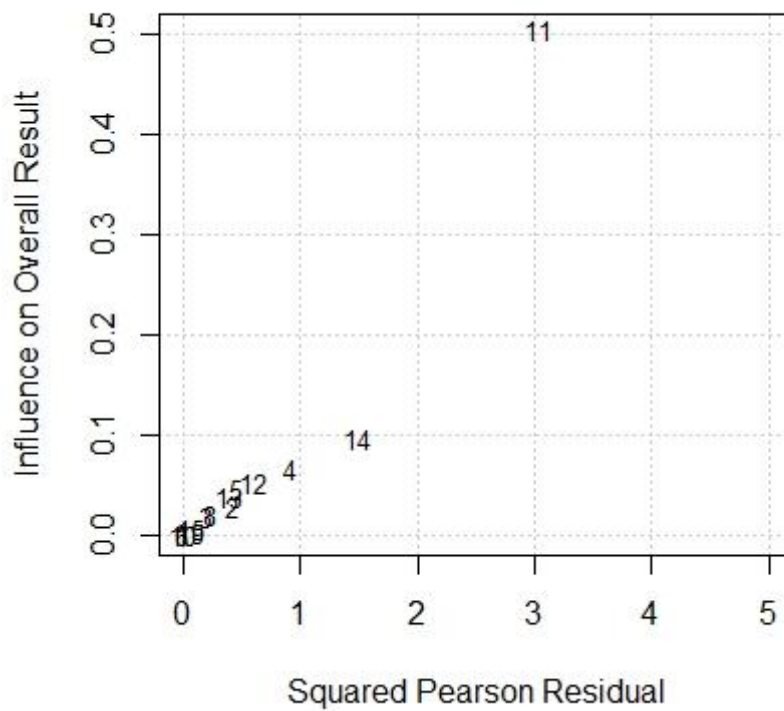
Meta-regressions:

Meta-regressions were conducted using the *mareg* function of the *metafor* package.

Subgroup analysis:

Subgroup analyses were conducted using *rma* function of the *metafor* package.

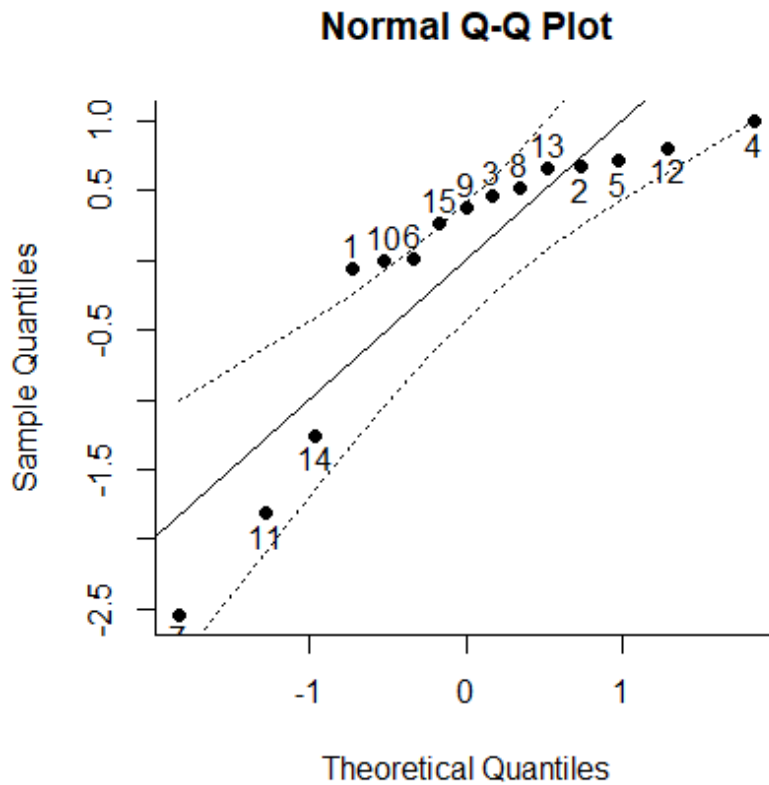
Supplementary Material S4



Baujat Plot: Studies influence on the summary effect size and their contribution to the heterogeneity.

¹Brunelin et al., 2007; ²Marjoram et al., 2006; ³Szoke et al., 2009; ⁴Garisson et al., 2017; ⁵Aldebot et al., 2012; ⁶Laroi et al., 2005; ⁷Laroi et al., 2004; ⁸Johns et al., 2010; ⁹Allen et al., 2006; ¹⁰Gaweda et al., 2018; ¹¹Versmissen et al., 2007; ¹²Versmissen et al., 2007; ¹³Alderson-Day et al., 2019; ¹⁴Peters et al., 2007; ¹⁵Humpston et al., 2017.

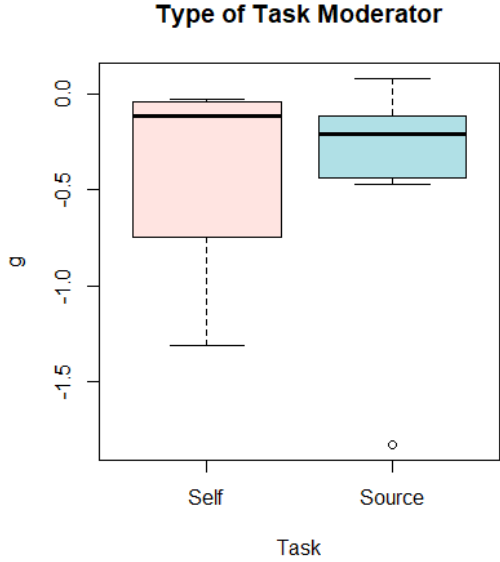
Supplementary Material S5



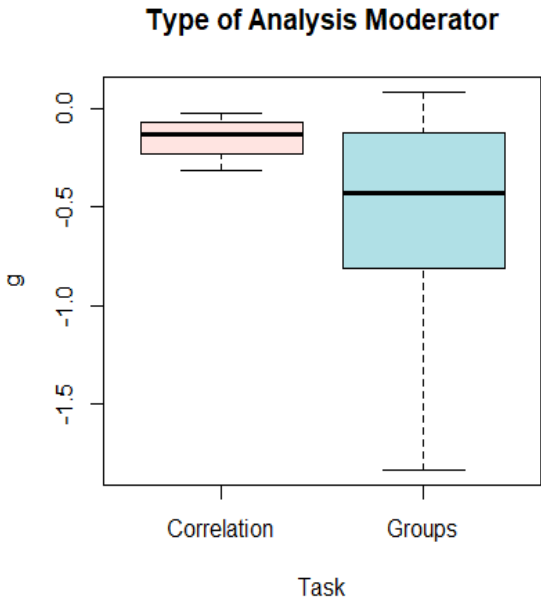
QQ Plot: Potential outliers visualisation.

¹Brunelin et al., 2007; ²Marjoram et al., 2006; ³Szoke et al., 2009; ⁴Garisson et al., 2017; ⁵Aldebot et al., 2012; ⁶Laroi et al., 2005; ⁷Laroi et al., 2004; ⁸Johns et al., 2010; ⁹Allen et al., 2006; ¹⁰Gaweda et al., 2018; ¹¹Versmissen et al., 2007; ¹²Versmissen et al., 2007; ¹³Alderson-Day et al., 2019; ¹⁴Peters et al., 2007; ¹⁵Humpston et al., 2017.

Supplementary Material S6



Boxplot: Type of Task Moderator visualisation.



Boxplot: Type of Analysis Moderator visualisation.

Study	ARMS, HP and/or US				HEALTHY CONTROLS			SAMPLES FROM CORRELATION STUDIES			Task used	Type of task
	n	Subgroup	mean	Sex ratio	n	mean age	Sex ratio	n	mean age	Sex ratio		
			age	(F:M)			(F:M)			(F:M)		
Brunelin et al., 2007	15	UR	28.5	NR	15	29.1	NR	NA	NA	NA	Source	Verbal
Marjoram et al., 2006	25	ARMS	29.85	NR	13	29.6	NR	NA	NA	NA	Source	Drawing
Szoke et al., 2009	37	UR	45.68	19:18	42	41.5	22:20	NA	NA	NA	Source	Verbal
Garrison et al., 2017	25	HP	19.8	18:7	22	22.9	20:2	NA	NA	NA	Source	Verbal
Aldebot Sacks et al., 2012	NA	ARMS	NA	NA	NA	NA	NA	420	19.18	264:156	Source	Verbal
Laroi et al., 2005	16	HP	22.8	7:9	16	23	8:8	NA	NA	NA	Source	Action
Laroi et al., 2004	25	HP	25.4	13:12	25	23.21	14:11	NA	NA	NA	Source	Verbal
Johns et al., 2010 *	31	ARMS	24.7	12:19	31	24.6	13:18	NA	NA	NA	Self	Verbal
Allen et al., 2006	NA	ARMS	NA	NA	NA	NA	NA	57	27.34	8:25	Self	Verbal
Gawęda et al., 2018 **	36	ARMS	19.17	19:17	33	20.27	22:11	NA	NA	NA	Source	Action
Versmissen et al., 2007a	78	UR + ARMS	42.2	21:18	52	47	32:20	NA	NA	NA	Self	Verbal
Versmissen et al., 2007b	81	UR + ARMS	42.25	NR	49	46.7	NR	NA	NA	NA	Self	Action
Alderson-Day et al., 2019	NA	HP	NA	NA	NA	NA	NA	76	20.21	65:11	Source	Verbal
Peters et al., 2007	17	ARMS	21.41	12:5	17	21.12	11:6	NA	NA	NA	Source	Action
Humpston et al., 2017	NA	ARMS	NA		NA	NA	NA	102	22.3	80:22	Source	Action

Table 1. Characteristics for the studies included in the meta-analysis.

ARMS: At-Risk Mental State; HP: Hallucination-prone; UR: Unaffected first-degree relatives. NA: not applicable; NR: no data reported.

* In Johns et al 2010, participants received medication: AP: antipsychotic (16%) + AD: antidepressant (25.8%) + CBT: Cognitive-Behavioral Therapy (51.6%)

** In Gawęda et al., 2018, participants received medication: AP (5%) + AD (63.8%)

	1	2	3	4	8	9	10	11	12	13	14		
			Method of subject/ comparison group selection or source of information/ input variables described and appropriate?	Subject characteristics sufficiently described?	Outcome well defined and robust to measurement / misclassification? Means of assessment reported?	Sample size appropriate?	Analytic methods described/ justified and appropriate?	Some estimate of variance is reported for the main results?	Controlled for confounding ?	Results reported in sufficient detail?	Conclusions supported by the results?	Total sum	Summary score
Studies (yes:2 ; partial:1; no:0)	Question/ objective sufficiently described?	Study design evident and appropriate?											
Brunelin et al., 2007	2	2	2	2	2	1	2	2	0	1	2	18	0.82
Marjoram et al., 2006	1	2	2	2	2	0	2	2	2	1	2	18	0.82
Szoke et al., 2009	2	2	2	2	2	2	2	2	2	2	2	22	1
Garisson et al., 2017	2	2	1	2	0	2	2	2	1	2	2	18	0.82
Aldebot et al., 2012	2	2	2	1	1	2	2	0	1	1	2	16	0.73
Laroi et al., 2005	2	2	2	2	2	1	2	2	2	1	2	20	0.91
Laroi et al., 2004	2	2	2	2	2	2	1	0	2	1	2	18	0.82
Johns et al., 2010	2	2	2	2	2	1	2	2	2	2	2	21	0.95
Allen et al., 2006	2	2	2	2	2	1	2	2	2	1	2	20	0.91
Gaweda et al., 2018	2	2	2	2	2	2	2	0	2	1	2	19	0.86
Versmissen et al., 2007a	2	2	2	1	1	1	0	2	0	2	2	15	0.68
Versmissen et al., 2007b	2	0	2	1	2	1	0	2	2	1	2	15	0.68
Alderson-Day et al., 2019	2	2	2	0	1	1	2	2	0	1	2	15	0.68
Peters et al., 2007	2	2	2	2	2	1	2	2	2	2	2	21	0.95
Humpston et al., 2017	2	2	2	2	2	2	2	2	0	2	2	20	0.91

Supplementary Material S2: Rating scores calculated for each study using the Standard Quality Assessment (QualSyst tool¹⁴). Three domains relative to clinical intervention were not applicable and thus removed from the table.