



HAL
open science

Topographical functional connections between the brain and the cervical spinal cord the brain and the cervical spinal cord

Caroline Landelle, Nawal Kinany, Benjamin de Leener, Ovidiu Lungu, Veronique Marchand-Pauvert, Dimitri van de Ville, Julien Doyon

► To cite this version:

Caroline Landelle, Nawal Kinany, Benjamin de Leener, Ovidiu Lungu, Veronique Marchand-Pauvert, et al.. Topographical functional connections between the brain and the cervical spinal cord the brain and the cervical spinal cord. OHBM 2023, Jul 2023, Montréal, Canada. hal-04440230

HAL Id: hal-04440230

<https://hal.science/hal-04440230>

Submitted on 5 Feb 2024

HAL is a multi-disciplinary open access archive for the deposit and dissemination of scientific research documents, whether they are published or not. The documents may come from teaching and research institutions in France or abroad, or from public or private research centers.

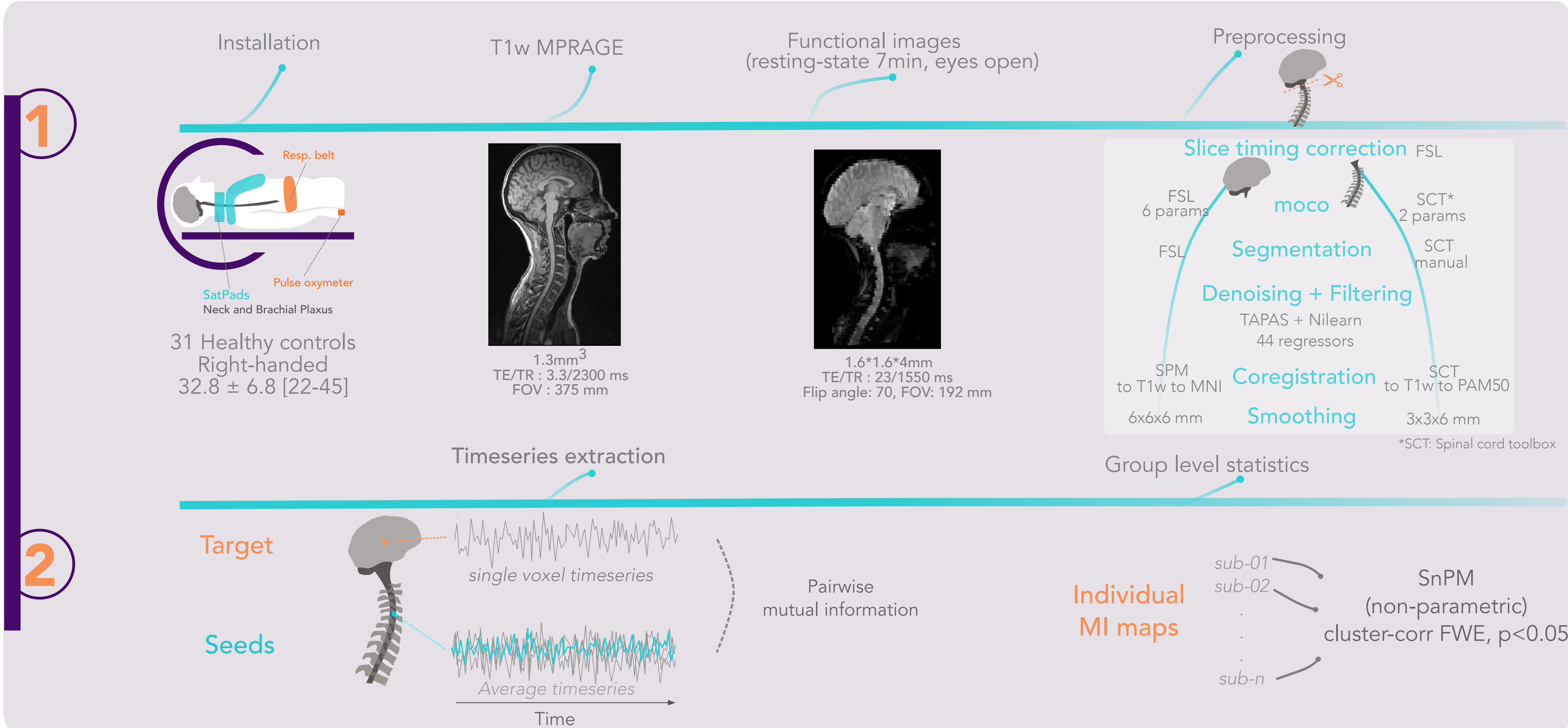
L'archive ouverte pluridisciplinaire **HAL**, est destinée au dépôt et à la diffusion de documents scientifiques de niveau recherche, publiés ou non, émanant des établissements d'enseignement et de recherche français ou étrangers, des laboratoires publics ou privés.

Rationale & methods

- ✓ Sensorimotor processes take place at each level of the central nervous system
- ✓ Little is known about the spontaneous brain/spinal cord functional communication

Simultaneous fMRI acquisition of the brain and whole cervical spinal cord^{2,7}

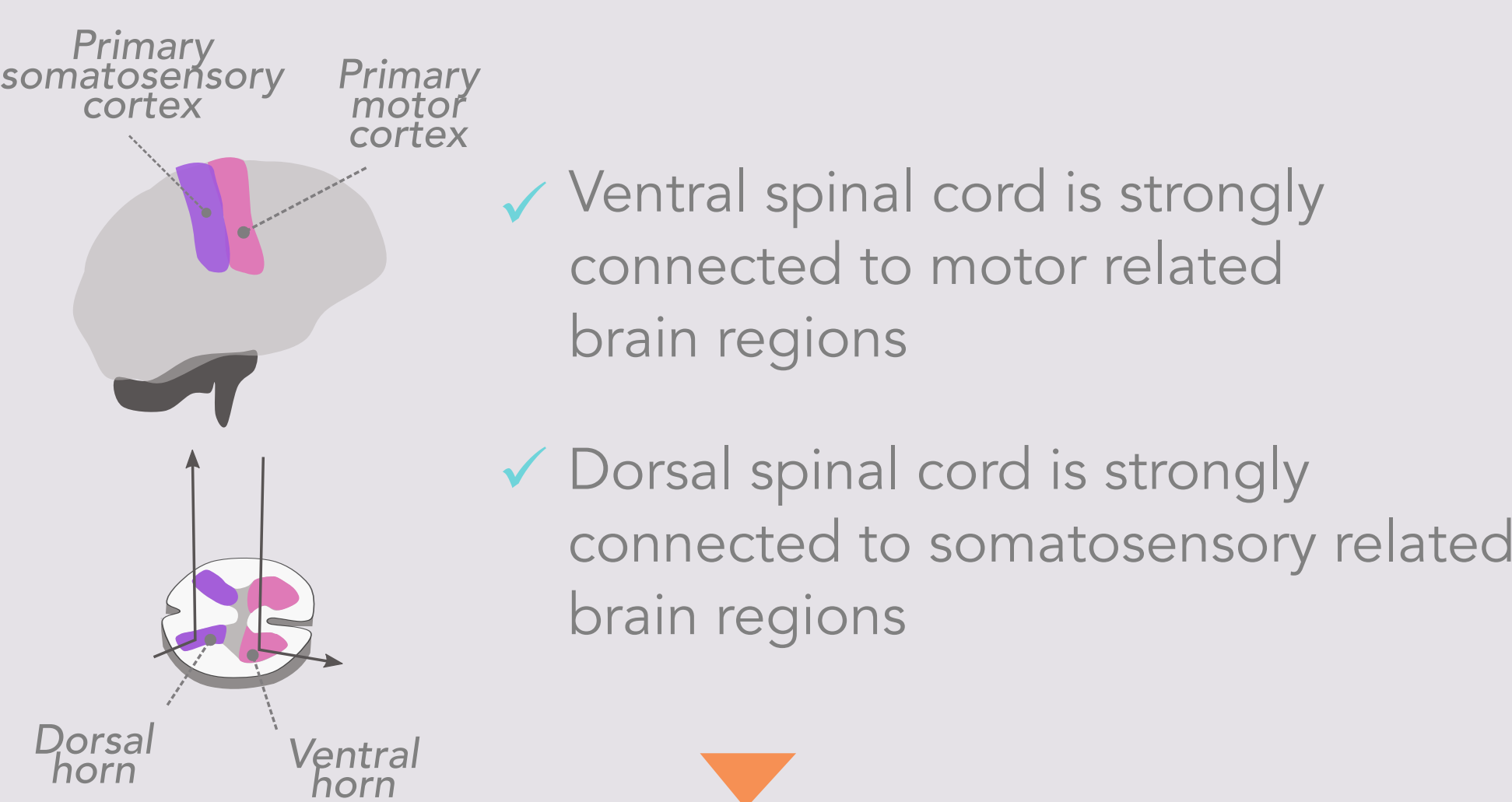
- ✓ Brain and spinal cord were preprocessed and denoised separately using in-house pipeline⁴
- ✓ Seed to voxels analyses were run:
 - ✓ **Seeds:** several spinal cord regions
 - ✓ **Targets:** whole brain or sensorimotor cortex
- ✓ Functional connectivity (FC) was captured using **mutual information** metric (MI)



Results

- ✓ Significant FC between the cervical spinal cord and cortical and subcortical sensorimotor regions

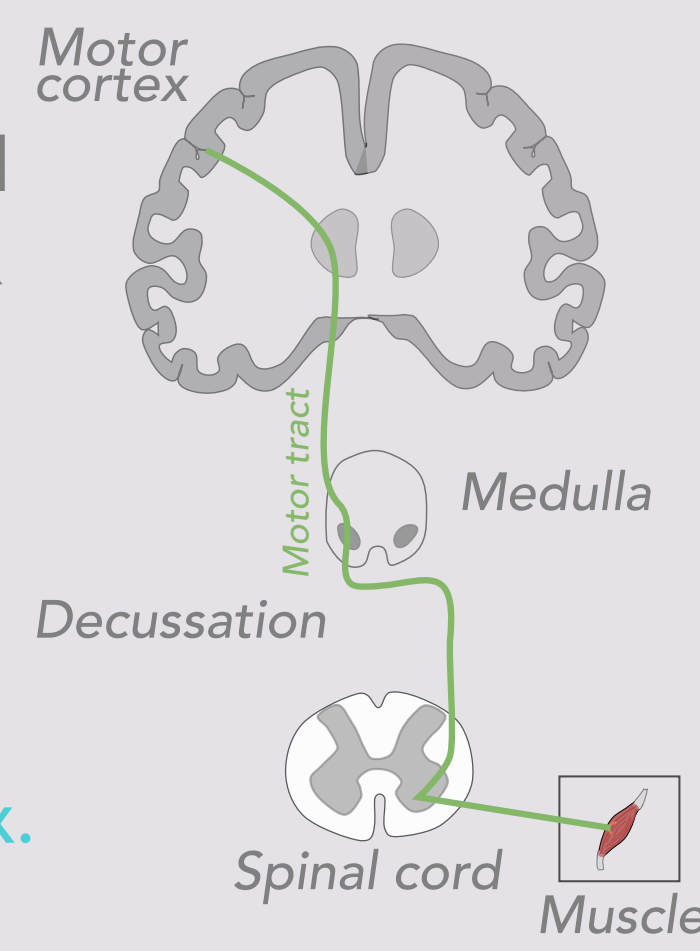
Spinal cord transmits motor and somatosensory signals from and to the brain



Likely underlying corticospinal pathway (motor tract), transmitting signals from motor cortex to muscles, and dorsal column pathway (sensory tract), sending information from body periphery to somatosensory cortex

- ✓ Right spinal cord is more connected to contralateral sensorimotor cortex than left spinal cord

Spinal cord is primarily connected to contralateral sensorimotor cortex. Emphasise hand dominance



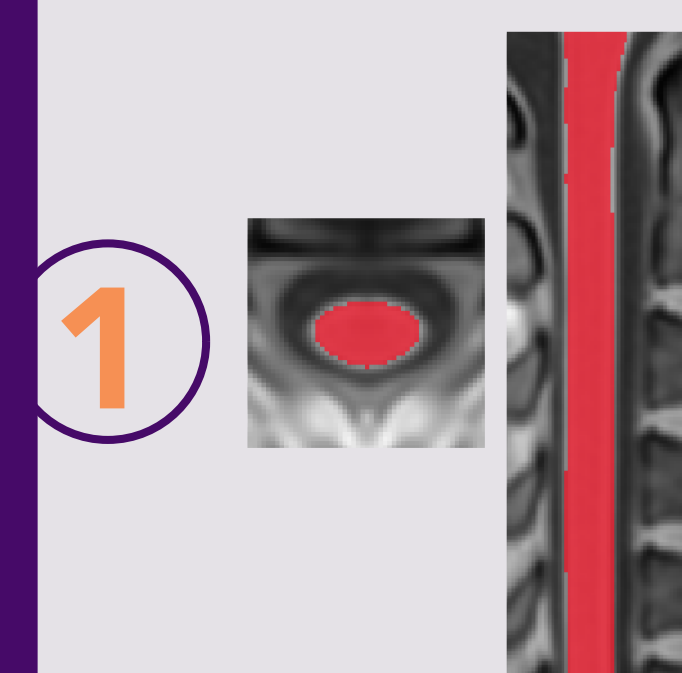
- ✓ The different spinal levels, known to innervate distinct body parts, are connected to different parts of the left M1 and S1 cortex

Rostro-caudal spinal gradient^{1,5} of functional connectivity aligns with Penfield's cortical sensory body space representation⁶ and matches even closer to the updated version of the motor homunculus (Gordon et al. 2023)³

Conclusion

fMRI revealed topographical communication between the spinal cord and the brain. Functional connectivity follows key features of the sensorimotor system: lateralization and somatotopy.

A. Cord seeds



B. Mutual information maps

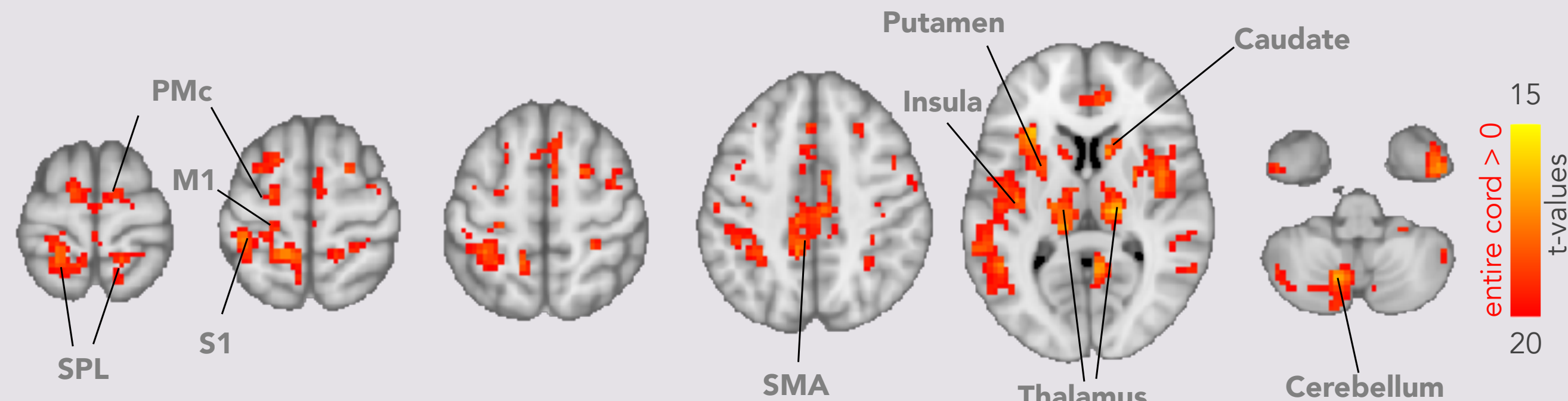
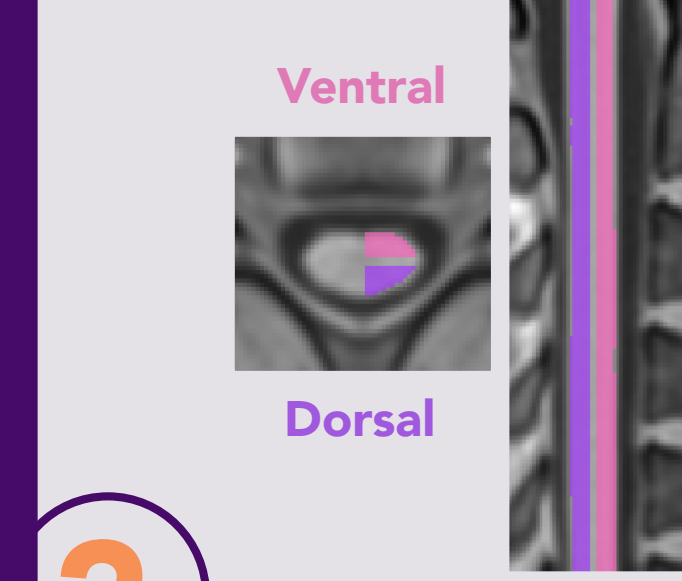


Fig.1 | Functional connectivity between the cervical spinal cord and whole brain. (A) C1 to C7 spinal cord levels were used as seed and a mask of the whole brain GM as target. (B) Voxels of the statistical maps (one sample-test) were thresholded at $t=15$ and a FWE cluster correction was applied ($p < 0.05$).

Right seeds



Mutual information maps

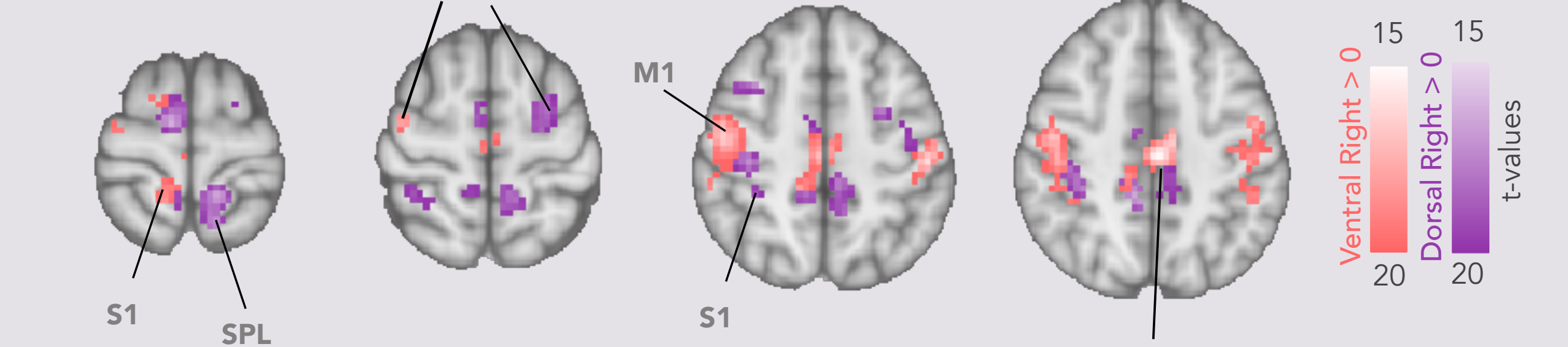
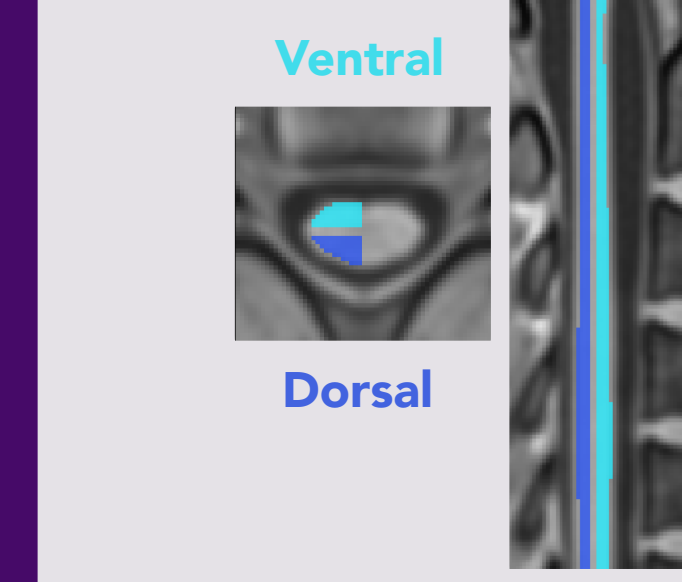


Fig.2 | Functional connectivity between the cervical spinal cord quadrants and sensorimotor cortex. (A) Ventral right (pink) dorsal right (violet), ventral left (light blue) and dorsal left (blue) quadrants from C1 to C7 cord were used as seeds and a mask of the sensorimotor cortex as target. (B) Voxels of the statistical maps (one sample t-tests) were thresholded at $t=15$ and a FWE cluster correction was applied ($p < 0.05$).

Left seeds



Mutual information maps

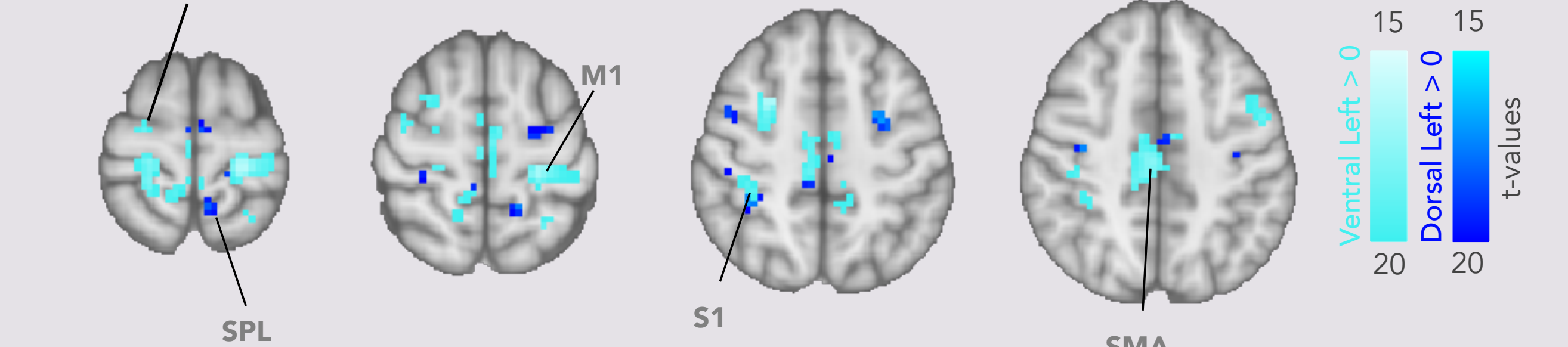
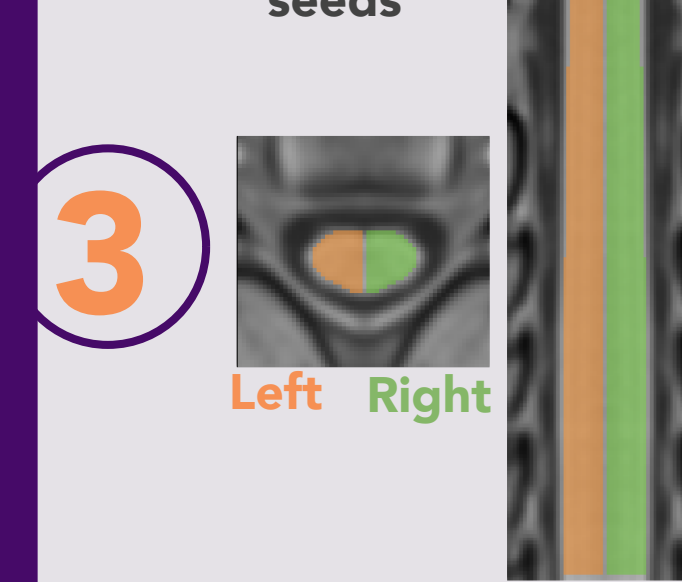
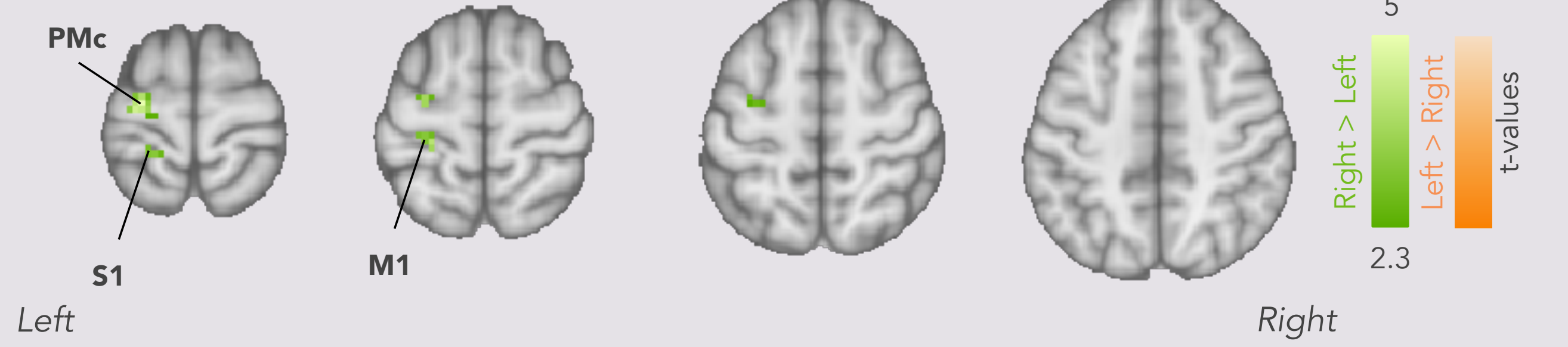


Fig.3 | Comparison of functional connectivity between the right and the left hemicords with the sensorimotor cortex. (A) Right (green) and left (orange) hemicords were used as seeds and a mask of the sensorimotor cortex as target. (B) Contrasts maps (paired-t-tests) were corrected at the cluster level (FWE $p < 0.05$). Note that no significant differences were observed for the [left>right] contrast.

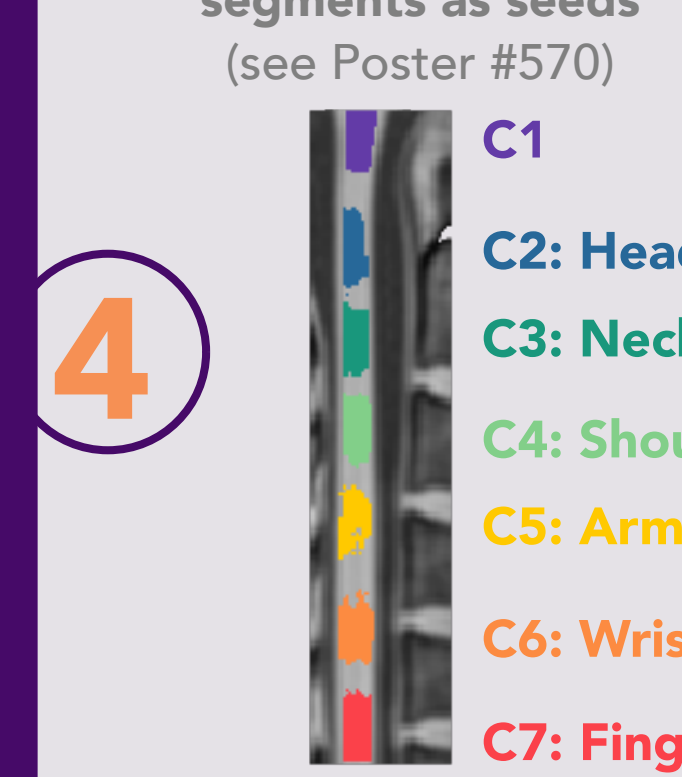
Right vs. Left seeds



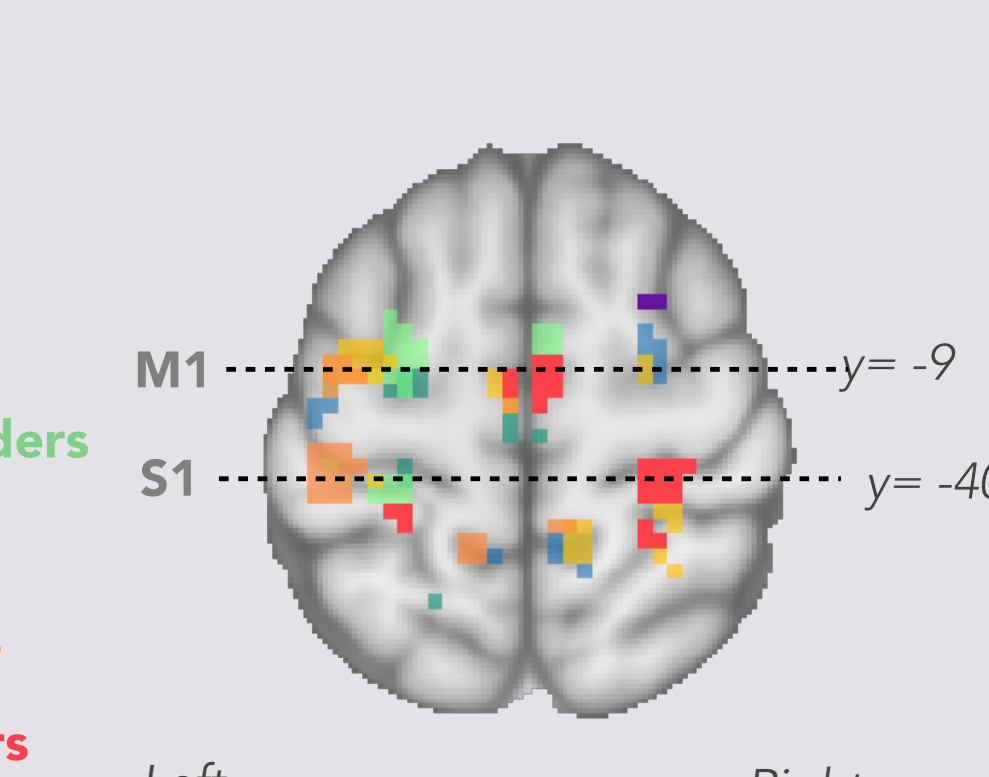
Mutual information maps



Functional spinal segments as seeds



Motor cortex



Somatosensory cortex

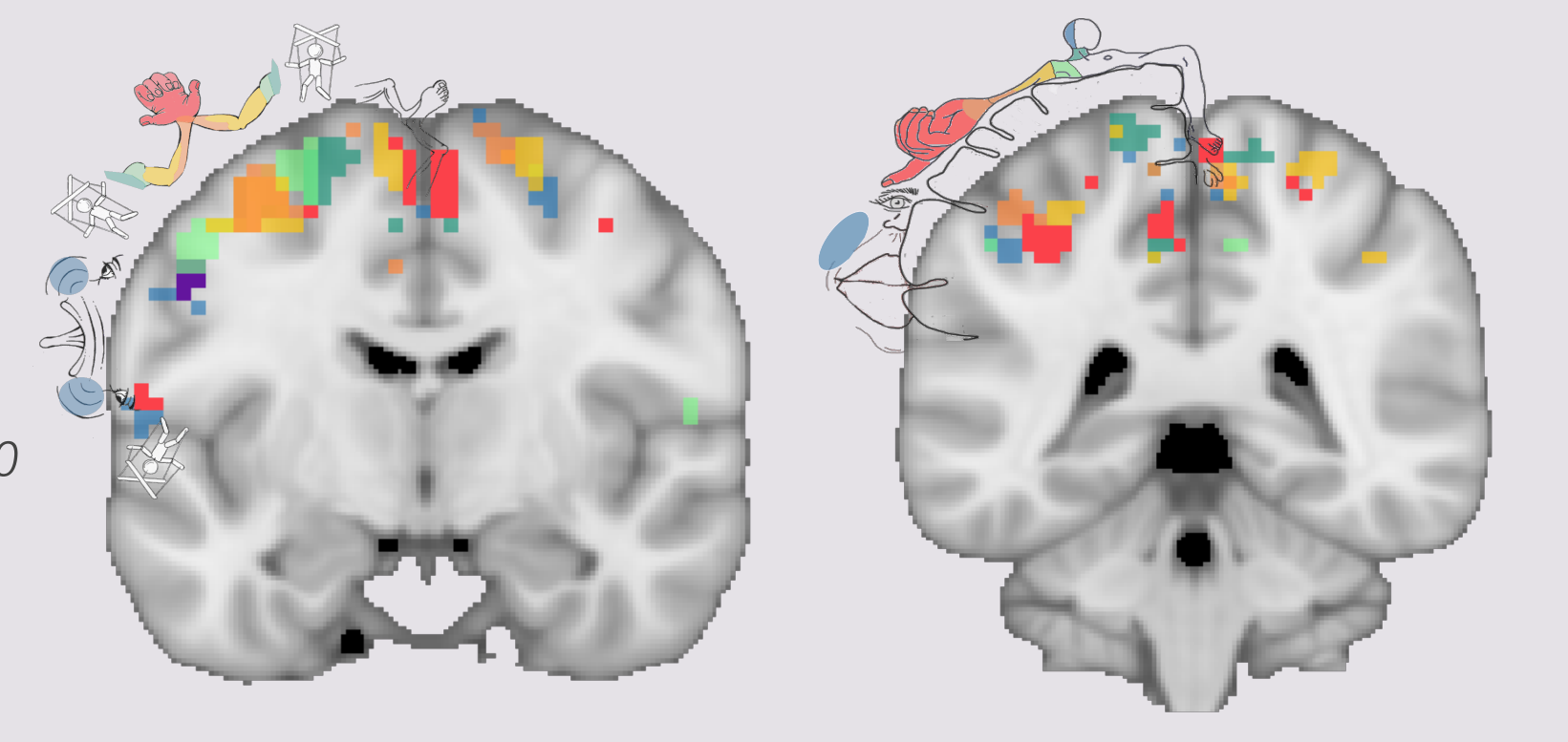


Fig.4 | Topographic functional connectivity between spinal cord levels and primary sensorimotor cortices. (A) Functional spinal cord levels were defined using a data-driven approach (for details see poster#570). Each color represents a distinct segment and the innervated dermatome has been specified. (B) Statistical maps (one sample t-tests) were corrected at the cluster level (FWE $p < 0.05$). motor³ and sensory⁶ homunculus are illustrated for comparison.

References:

- Keegan JJ., Garrett FD. (1948). The segmental distribution of the cutaneous nerves in the limbs of man. *Anat Rec* Dec;102(4):409-37
- Khatibi A., et al. (2022). Brain-spinal cord interaction in long-term motor sequence learning in human: An fMRI study. *NeuroImage*.
- Gordon EM., et al. (2023) A somato-cognitive action network alternates with effector regions in motor cortex. *Nature*. 2023
- Landelle C., et al. (2021). Investigating the human spinal sensorimotor pathways through functional magnetic resonance imaging. *NeuroImage*.
- Schirmer, C.M., et al. (2011). Heuristic map of myotomal innervation in humans using direct intraoperative nerve root stimulation. *Journal of neurosurgery. Spine*.
- Penfield, W., & Boldrey, E. (1937). Somatic motor and sensory representation in the cerebral cortex of man as studied by electrical stimulation. *Brain: A Journal of Neurology*.
- Vahdat S., et al. (2015) Simultaneous Brain-Cervical Cord fMRI Reveals Intrinsic Spinal Cord Plasticity during Motor Sequence Learning. *PLoS Biol*.

Acknowledgements: The authors would like to thank the volunteers enrolled in the study. This study was funded by the Swiss National Science Foundation (Project No. 205321_207493), Fondation Courtois, the Natural Sciences and Engineering Research Council of Canada (NSERC, Grant No. 248074), Brain Canada Platform (Grant No. 255934) and Healthy Brain for Healthy Lives (HBHL, Grant No. 2473633). CL was founded by Fonds de Recherche du Québec-Santé (FRQ-S) and the Canadian Institutes of Health Research (CIHR).