



**HAL**  
open science

## Impact of moderate prematurity on early speech perception and language acquisition in infants, a longitudinal planned study

Giulia Danielou, Estelle Hervé, Anne-Sophie Dubarry, Thierry Legou, William Rozalen, Béatrice Desnous, Clément François

### ► To cite this version:

Giulia Danielou, Estelle Hervé, Anne-Sophie Dubarry, Thierry Legou, William Rozalen, et al.. Impact of moderate prematurity on early speech perception and language acquisition in infants, a longitudinal planned study. Society for the Neurobiology of Language, Oct 2023, Marseille, France. . hal-04434388

**HAL Id: hal-04434388**

**<https://hal.science/hal-04434388v1>**

Submitted on 2 Feb 2024

**HAL** is a multi-disciplinary open access archive for the deposit and dissemination of scientific research documents, whether they are published or not. The documents may come from teaching and research institutions in France or abroad, or from public or private research centers.

L'archive ouverte pluridisciplinaire **HAL**, est destinée au dépôt et à la diffusion de documents scientifiques de niveau recherche, publiés ou non, émanant des établissements d'enseignement et de recherche français ou étrangers, des laboratoires publics ou privés.



# Impact of moderate prematurity on early speech perception and language acquisition in infants, a longitudinal planned study

Danielou G.<sup>1,2</sup>, Hervé E.<sup>1,2</sup>, Dubarry A.S.<sup>1,2</sup>, Legou T.<sup>1,2</sup>, Rozalen W.<sup>1,3</sup>, Desnous B.<sup>3,4</sup>, François C.<sup>1,2</sup>

1. Laboratoire Parole et Langage, CNRS, France. 2. ILCB, Aix-Marseille Université France. 3. APHM, Centre de Référence des Epilepsies Rares, Hôpital Timone Enfants, France. 4. INS, INSERM, France.

## Introduction

During the first year of life, human infants become progressively attuned to the phonological properties of their native language (Kuhl et al., 2008; Maurer & Werker, 2014).

Moderate or late preterms (32-36 weeks of gestational age) show lower neurodevelopmental outcomes at age 2 (De Jong et al., 2015; Shah et al., 2016) and an increased risk of lower educational achievement at age 5 (Quigley et al., 2012).

The aim of this study is (i) to explore the role of cortical and subcortical brain structures in the encoding of native phonetic contrasts during early development, (ii) to determine the impact of moderate preterm birth.

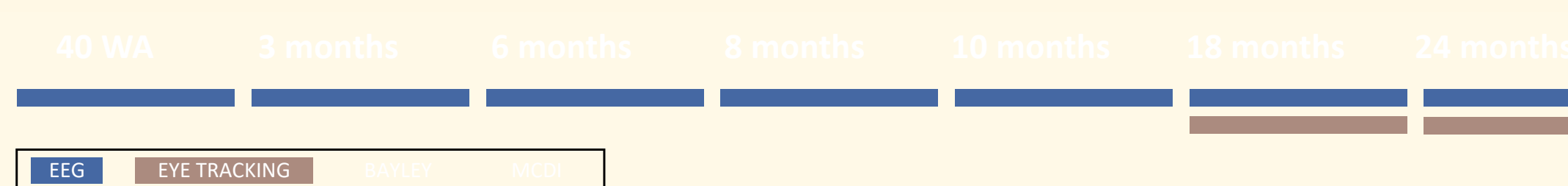
This longitudinal study will enable us to follow the development of children, whether born at term or with moderate prematurity, from birth to the age of two. We adapted the method of Bidelman (2015) to simultaneously record brain responses to CV syllables at cortical and subcortical levels.

## Aims

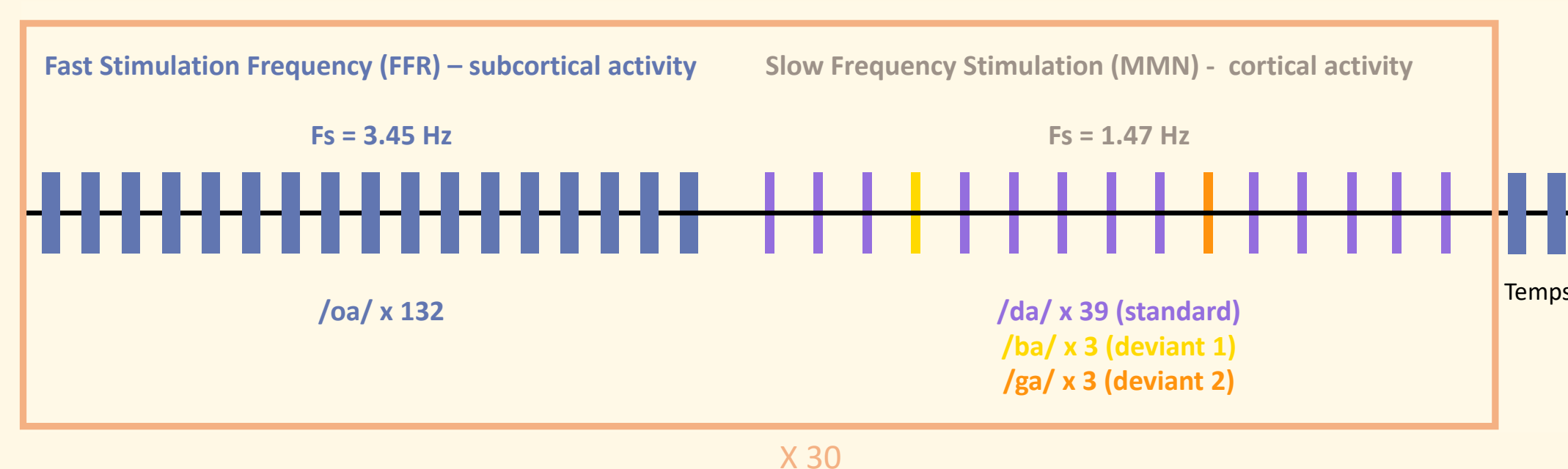
- To understand how the encoding of speech features evolves over the first year of life, in both typically and atypically developing children, by examining the impact of auditory pathway immaturity and early environment on native phonetic contrasts.
- Assess whether neuroplasticity mechanisms that enhance native language encoding in young children can predict the later development of lexical skills.
- To highlight the importance of phonetic boundary refinement in the early years of life in predicting later ability to learn new words.

## Experimental design and procedure

### Longitudinal design with infants

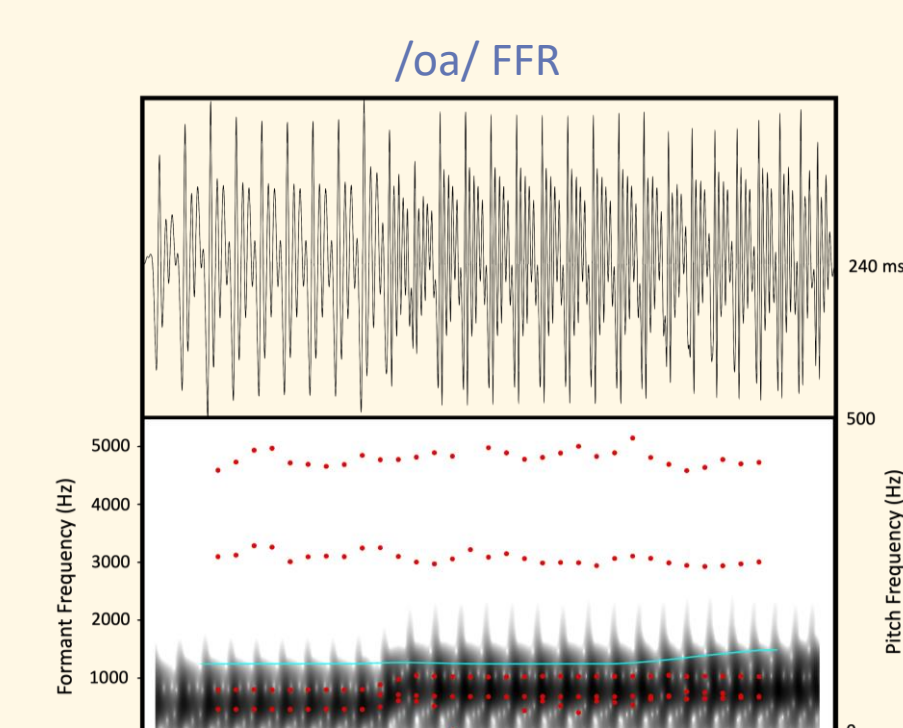


### Passive listening paradigm

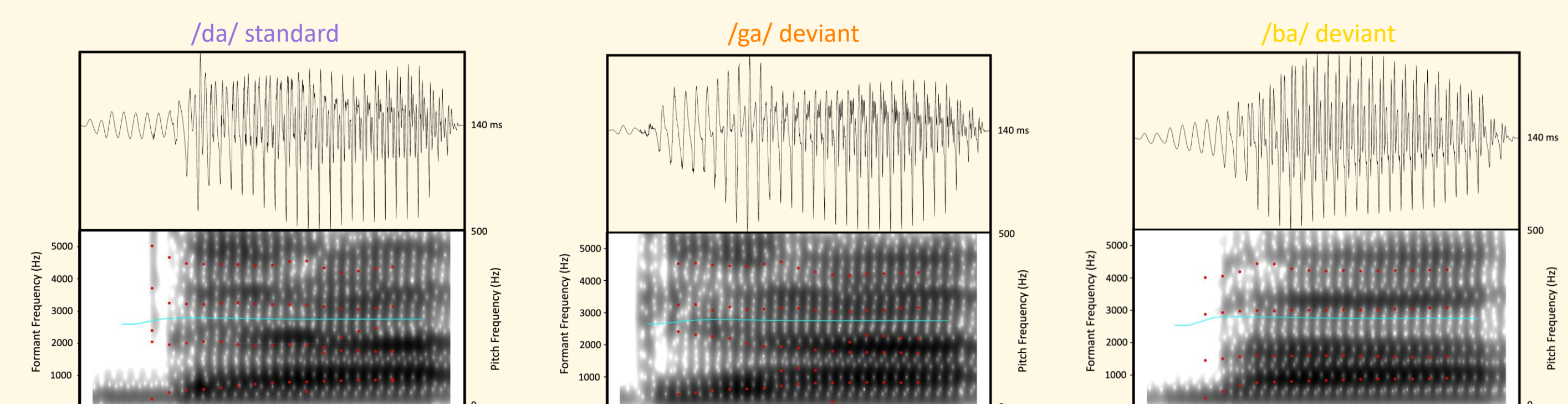


EEG recordings with simultaneous cortical and subcortical responses during a passive listening task (Bidelman, 2015).

Synthetic CV syllable for FFR: /oa/ duration 240 ms (Gorina-Careta et al., 2022)



Semi-synthetic CV syllables for MMN: /da/, /ba/ and /ga/ duration 140 ms.

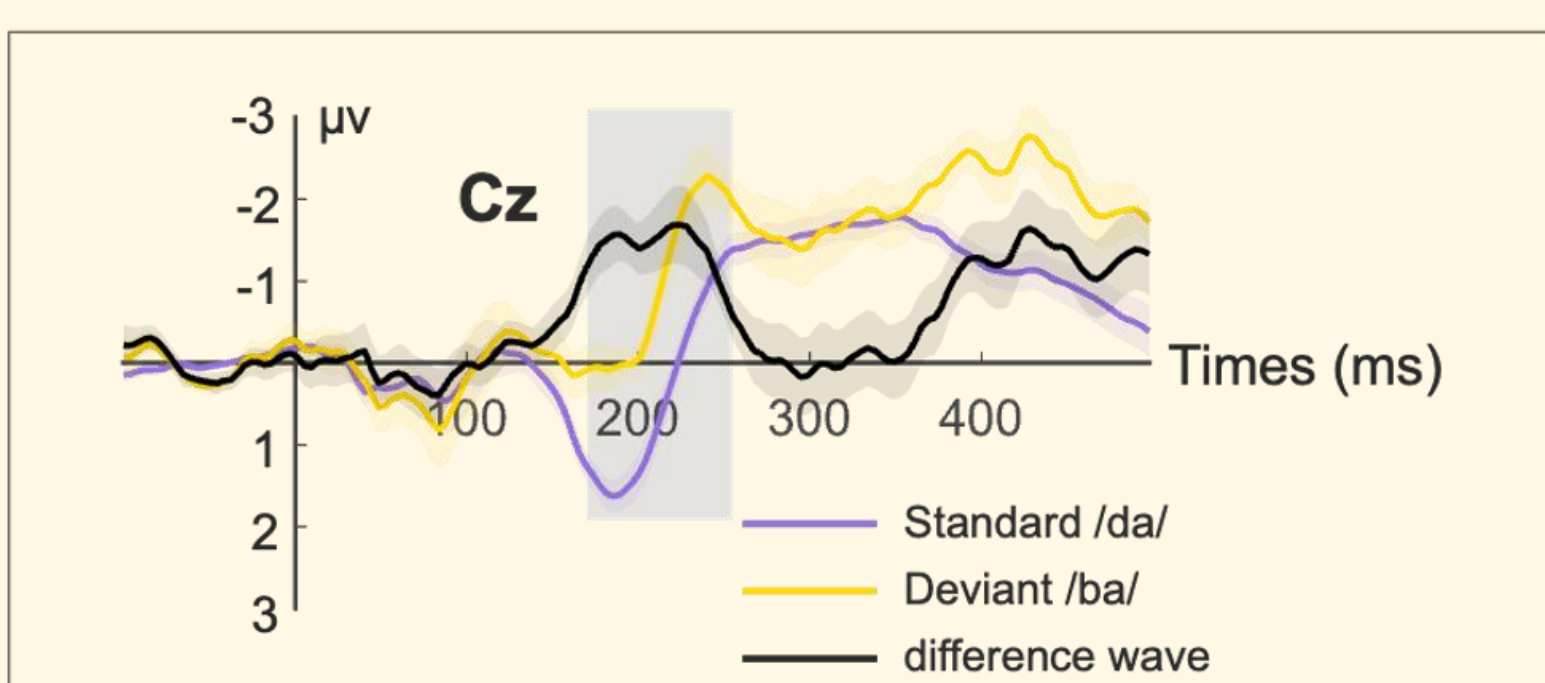


## Preliminary results in adults

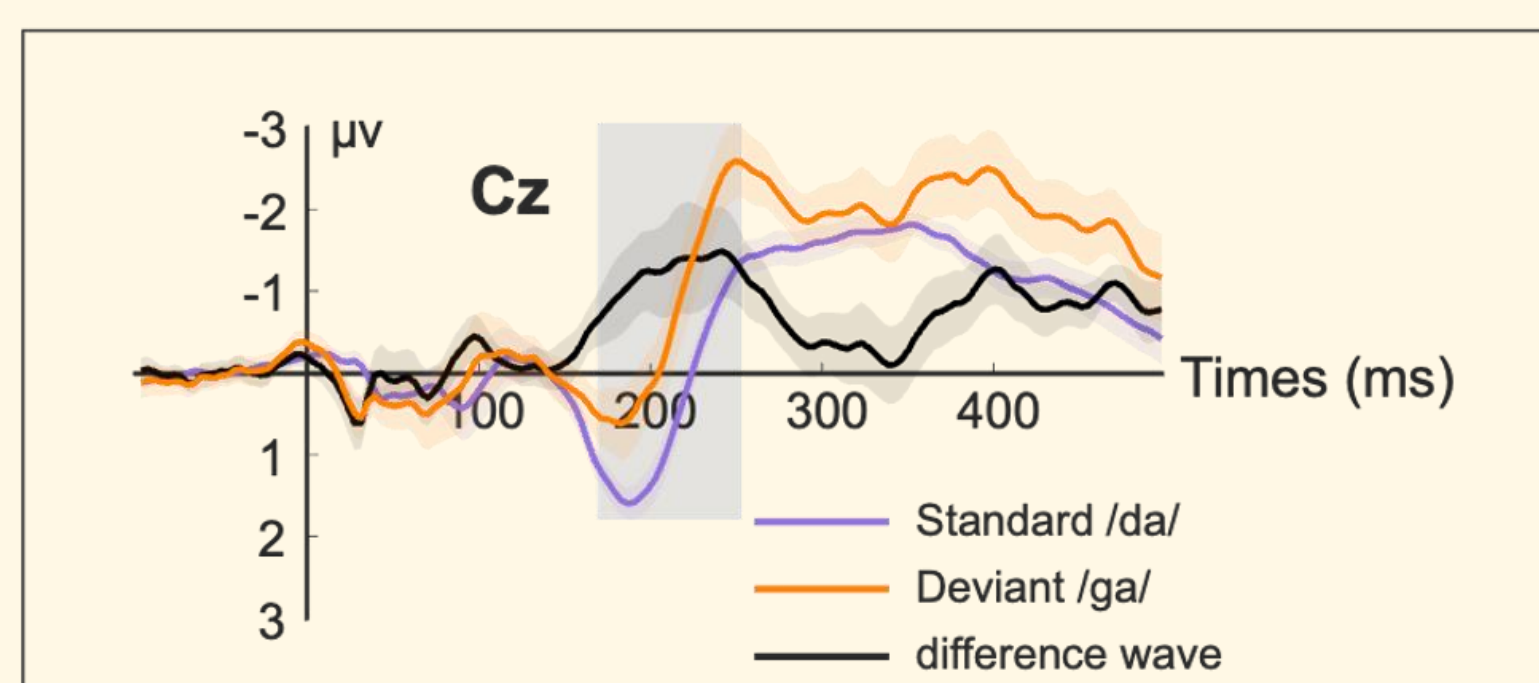
Grand average across participants (N=13), age range = 18 – 35 years

Event-related brain Potentials:

A) Response to deviant /ba/ (yellow) vs standard syllable /da/ (purple), MMN (black)

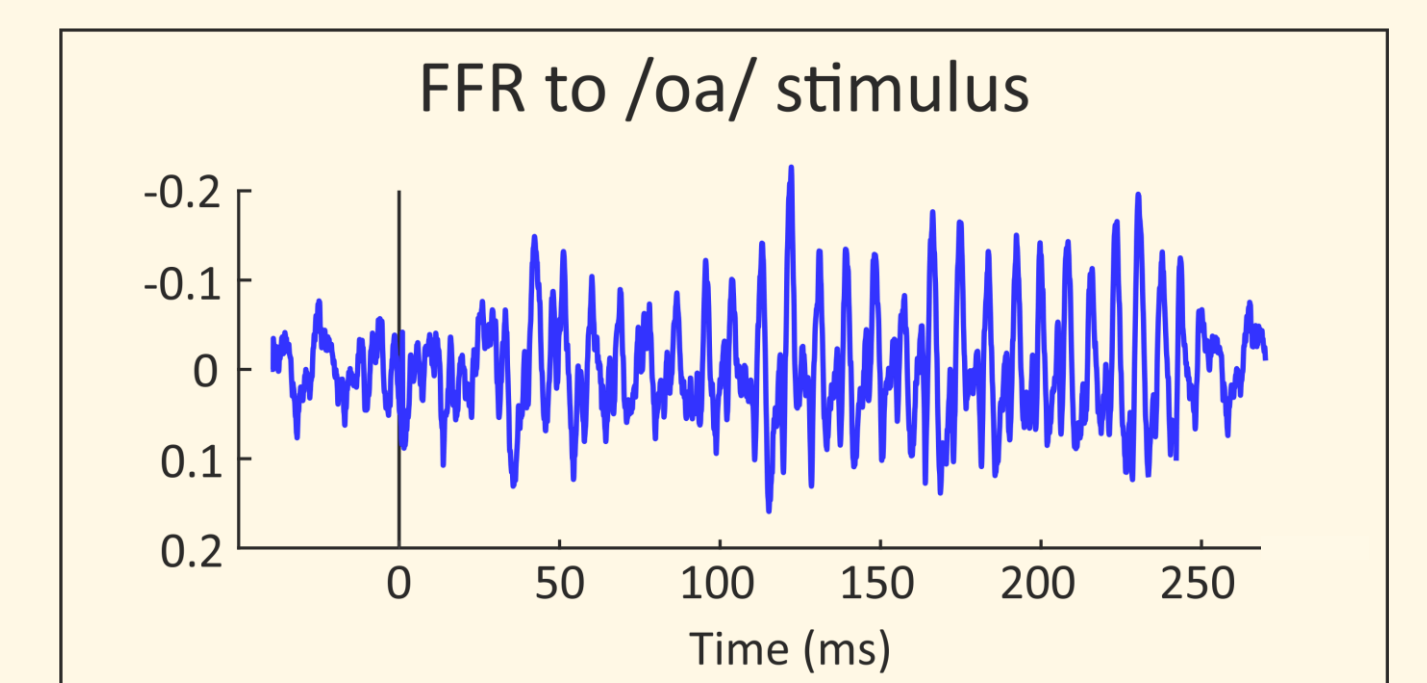


B) Response to deviant /ga/ (orange) vs standard syllable /da/ (purple), MMN (black)



Subcortical activity to /oa/ syllable:

Time Domain



## Perspectives

- Specify the neuro-plastic mechanisms underlying the refinement of native speech sound encoding in infancy .
- Examine the impact of moderate preterm birth on the complex relationship between early speech perception and vocabulary acquisition.
- Identify early biomarkers of language delay.

## References

Bidelman, G. M. (2015). Towards an optimal paradigm for simultaneously recording cortical and brainstem auditory evoked potentials. *Journal of Neuroscience Methods*, 241, 94–100.  
 Gorina-Careta, N., Ribas-Prats, T., Arenillas-Alcón, S., Puertollano, M., Roig, M. D. G., & Escera, C. (2022). Neonatal Frequency-Following Responses: A Methodological Framework for Clinical Applications. *Seminars in Hearing*, 43(03), 162–176.  
 De Jong, M., Verhoeven, M., Lasham, C., Meijssen, C. B., & Van Baar, A. L. (2015). Behaviour and development in 24-month-old moderately preterm toddlers. *Archives of Disease in Childhood*, 100(6), 548–553.  
 Kuhl P. K. (2004). Early language acquisition: cracking the speech code. *Nature reviews. Neuroscience*, 5(11), 831–843.  
 Maurer, D., & Werker, J. F. (2014). Perceptual narrowing during infancy: a comparison of language and faces. *Developmental psychobiology*, 56(2), 154–178.  
 Quigley, M. A., Poulsen, G., Boyle, E. M., Wolke, D., Field, D., Alfirevic, Z., & Kurinczuk, J. J. (2012). Early term and late preterm birth are associated with poorer school performance at age 5 years: a cohort study. *Archives of Disease in Childhood-fetal and Neonatal Edition*, 97(3), F167-F173.  
 Shah, P. E., Kaciroti, N., Richards, B., Oh, W., & Lumeng, J. C. (2016). Developmental Outcomes of Late Preterm Infants From Infancy to Kindergarten. *Pediatrics*, 138(2).

This work was funded by the French National Agency for Research (ANR), "BabyLang project" (ANR-20-CE28-0017) to CF. This work, carried out within the Institute of Convergence ILCB, was supported by grants from France 2030 (ANR-16-CONV-0002) and the Excellence Initiative of Aix-Marseille University (A\*MIDEX).