



HAL
open science

Transparent framework to assess the revision of national climate pledges

Katsumasa Tanaka, Kushal Tibrewal, Philippe Ciais, Olivier Boucher

► **To cite this version:**

Katsumasa Tanaka, Kushal Tibrewal, Philippe Ciais, Olivier Boucher. Transparent framework to assess the revision of national climate pledges. 2024. hal-04432212

HAL Id: hal-04432212

<https://hal.science/hal-04432212v1>

Preprint submitted on 1 Feb 2024

HAL is a multi-disciplinary open access archive for the deposit and dissemination of scientific research documents, whether they are published or not. The documents may come from teaching and research institutions in France or abroad, or from public or private research centers.

L'archive ouverte pluridisciplinaire **HAL**, est destinée au dépôt et à la diffusion de documents scientifiques de niveau recherche, publiés ou non, émanant des établissements d'enseignement et de recherche français ou étrangers, des laboratoires publics ou privés.

Transparent framework to assess the revision of national climate pledges

Katsumasa Tanaka (✉ katsumasa.tanaka@lsce.ipsl.fr)

LSCE (Laboratoire des Sciences du Climat et de l'Environnement) <https://orcid.org/0000-0001-9601-6442>

Kushal Tibrewal

LSCE (Laboratoire des Sciences du Climat et de l'Environnement)

Philippe Ciais

Laboratoire des Sciences du Climat et de l'Environnement <https://orcid.org/0000-0001-8560-4943>

Olivier Boucher

Institut Pierre-Simon Laplace, Sorbonne Université / CNRS

Physical Sciences - Article

Keywords:

Posted Date: January 25th, 2024

DOI: <https://doi.org/10.21203/rs.3.rs-3889145/v1>

License: © ⓘ This work is licensed under a Creative Commons Attribution 4.0 International License.

[Read Full License](#)

Additional Declarations: There is **NO** Competing Interest.

Transparent framework to assess the revision of national climate pledges

Kushal Tibrewal^{1,*}, Katsumasa Tanaka^{1,2,*},[✉], Philippe Ciais¹, Olivier Boucher³

¹ Laboratoire des Sciences du Climat et de l'Environnement (LSCE), IPSL, CEA/CNRS/UVSQ, Université Paris-Saclay, Gif-sur-Yvette, France

² Earth System Division, National Institute for Environmental Studies (NIES), Tsukuba, Japan

³ Institut Pierre-Simon Laplace (IPSL), Sorbonne Université / CNRS, Paris, France

* These authors contributed equally to this work.

[✉] Corresponding author: katsumasa.tanaka@lsce.ipsl.fr

Abstract

Parties to the Paris Agreement will revise their Nationally Determined Contributions following the first Global Stocktake concluded in December 2023. To assess the impact of potential future climate pledges, we propose a simple, transparent framework for developing emission and temperature scenarios by country. We show that current pledges with unconditional targets lead to global warming of 1.96 (1.39-2.6)°C by 2100. Further warming could be limited through i) commitment to mid-century net-zero targets for all countries and earlier net-zero targets for developed countries, ii) enhancement of the Global Methane Pledge, and iii) ambitious implementation of the Glasgow Leaders' Declaration on Forests and Land Use. Our analysis further shows that overshooting 1.5°C is unavoidable, even with supplementary climate engineering strategies, suggesting the need for strategies to limit further overshoot and ultimately reduce the warming towards 1.5°C.

1 **Main Text**

2 The Paris Agreement stands as a cornerstone of global cooperation to address the need for
3 mitigating climate change. Central to the Agreement are the Nationally Determined
4 Contributions (NDCs) and Long-Term Strategies (LTSSs) that individual countries have
5 committed to, reflecting the collective ambition to hold global warming to well below 2°C
6 above pre-industrial levels and pursue efforts to limit warming to 1.5°C. As the world confronts
7 the urgency of climate action, there is a growing body of research scrutinizing these
8 commitments.

9 Most recent studies have focused on modeling future emissions and temperatures to
10 assess the effectiveness of these pledges prior to the 28th Conference of the Parties (COP28),
11 where the first Global Stocktake (GST) was concluded¹⁻⁴. Several earlier studies were
12 conducted to evaluate the pledges up to around COP26⁵⁻⁹. Studies generally indicate that if all
13 NDCs and mid-century net-zero targets are realized, global warming can be held around 2°C
14 by the end of the century. In contrast, with only pledges that are credible for implementation,
15 the end-of-century warming can exceed 2°C by a wide margin. Following the outcome of GST
16 at COP28, countries have approximately one year to further revise their current NDCs and
17 another year to submit new 2035 NDCs (Paragraphs 166 and 170 of ref.¹⁰, respectively).

18 To explore strategies for enhancing national climate pledges, we consider NDCs and
19 LTSSs available by the end of COP28, as well as the Global Methane Pledge (GMP), which
20 aims to reduce global anthropogenic CH₄ emissions by up to 30% by 2030¹¹. Our analysis
21 evaluates the potential impact of more ambitious targets, such as strengthened near-term
22 mitigation, accelerated timelines for net-zero, expanded scope of GMP, and implementations
23 of the Glasgow Leaders' Declaration on Forests and Land Use (LUF)¹². Reflecting on the
24 discussions and outcome of GST, as well as the preceding Sunnylands Statement between US
25 and China¹³, we also assess potential non-CO₂ targets that appeared in the COP28 draft

1 negotiation texts as they may be reconsidered at future COPs: i) net-zero for developed
2 countries by 2040, ii) 40% CH₄ reduction by 2035, and iii) 13% N₂O reduction by 2030,
3 followed by 18% by 2035 (Paragraph 39 of ref.¹⁴). We further investigate the adverse
4 consequences of falling short of declared targets, as implementation of current pledges is key
5 but sometimes doubtful. Our study goes beyond existing studies in that it isolates the
6 temperature response to each upgrade and downgrade at the country level. Sectoral targets are
7 not considered in this study.

8 Here we propose a simple framework for developing national emission scenarios for all
9 Paris signatories in order to bring greater transparency to the ongoing discourse on the
10 adequacy of current efforts to pursue the Paris objectives. There are large uncertainties in
11 emission pathways after mid-century, influencing end-of-century temperatures, among other
12 sources of uncertainty. Most previous studies either assumed a decline to net negative
13 emissions after net-zero (for CO₂ or greenhouse gases (GHGs)) or were not very explicit about
14 emission assumptions beyond net-zero. To our knowledge, continuing emission reductions
15 after net-zero, which are not stated in NDCs, are directly or indirectly informed by the IPCC
16 Sixth Assessment Report (AR6) scenario database, which contains a number of deep negative
17 CO₂ emission scenarios, for which the Integrated Assessment Model (IAM) approach has been
18 criticized¹⁵. Building on Benveniste study¹⁶, we use a simple mathematical function¹⁷ to
19 extrapolate emissions to zero CO₂ or GHG emissions for countries that have already committed
20 to net-zero (Methods). Emissions of a country with only a 2030 target are assumed to decline
21 no further after 2030 (i.e., Constant Emissions approach¹⁸). Our analysis focuses on three main
22 gases (CO₂, CH₄, and N₂O) as GHGs. The IAM community produced emission pathways for
23 selected countries using more detailed approaches¹⁹ and called for the development of a
24 standardized methodological framework for national scenarios²⁰.

1 Our temperature calculation method combines three well-established concepts: i)
2 Global Warming Potential-star (GWP*)^{21–25} and 100-year GWP (GWP100)^{26–29} to convert the
3 emissions of short-lived (e.g., CH₄) and long-lived (e.g., N₂O) climate forcers³⁰, respectively,
4 to CO₂eq emissions, ii) Transient climate response to cumulative carbon emissions (TCRE)^{31–}
5 ³⁴ to relate cumulative CO₂eq emissions to temperature changes, iii) Zero emissions
6 commitment (ZEC)^{34–37} to incorporate long-term temperature adjustments after net-zero
7 (Methods). Our method is further supplemented and supported by a reduced-complexity
8 climate model ACC2^{38–40} and the AR5 impulse response function (IRF)⁴¹. Our emission and
9 temperature pathways are publicly available and kept fully traceable.

10 While the primary focus remains on reducing emissions from existing sources, there is
11 a growing recognition of the potential importance of carbon dioxide removal (CDR) and solar
12 radiation modification (SRM) techniques as supplementary strategies^{42–45}. Our study considers
13 three “novel” CDRs⁴⁶: bioenergy with carbon capture and storage (BECCS), direct air carbon
14 capture and storage (DACCS) and enhanced weathering⁴⁷. We analyze the potential role of
15 novel CDR and SRM in conjunction with climate pledges⁴⁸, in the context of concerns about
16 the scalability of CDR and controversies on SRM due to their potential unintended
17 consequences, termination issues and governance and ethical considerations^{49,50}.

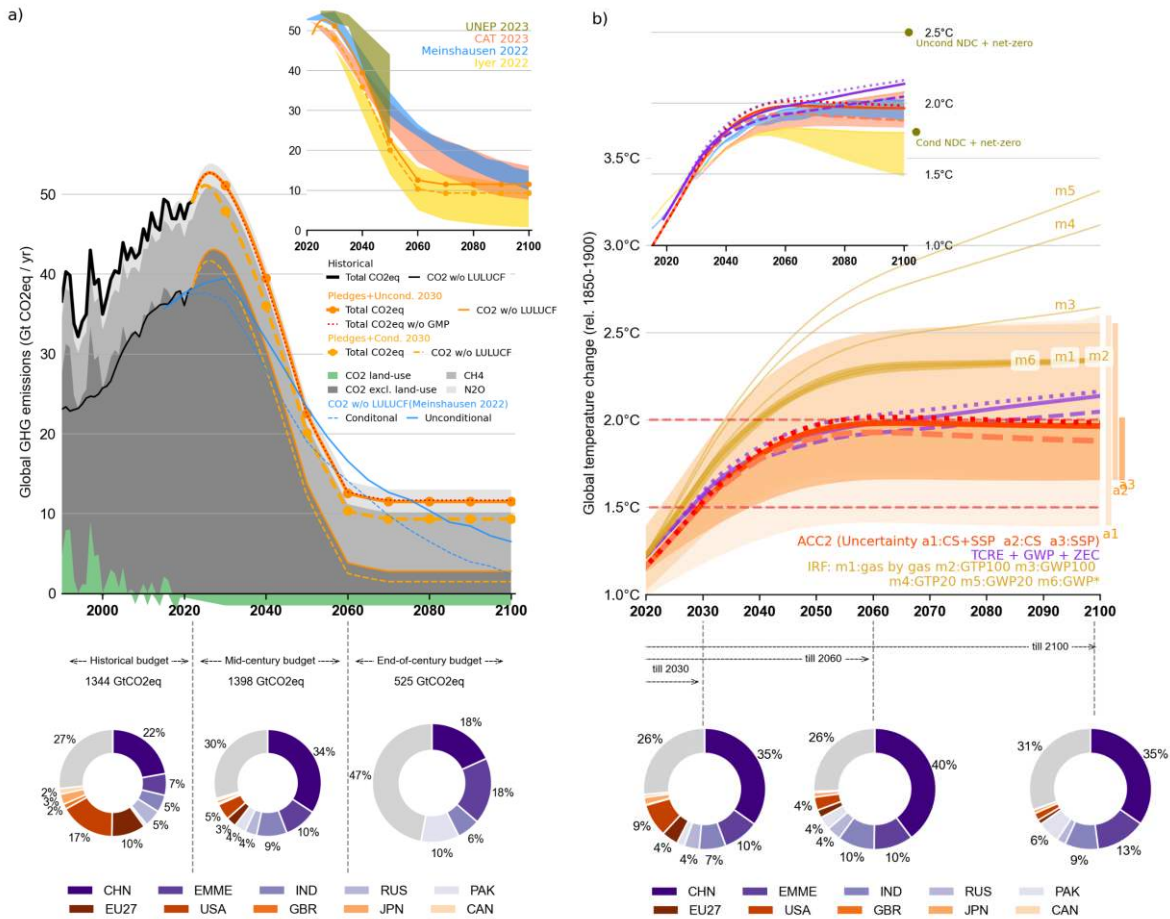
18

19 **Projections under current national climate pledges**

20 As of December 2023, 194 countries have near-term targets⁵¹, 93 have long-term targets to
21 become carbon or GHG neutral⁵², 150 have committed to GMP and over 140 have pledged to
22 LUF. With all these commitments combined, global emissions are projected to peak at 51-53
23 GtCO₂eq yr⁻¹ around 2026, followed by a decline and a stabilization at 9-12 GtCO₂eq yr⁻¹ by
24 2070 (Fig. 1a). Emissions from the energy, industrial processes, waste and agricultural sectors
25 (excluding the land use, land-use change, and forestry (LULUCF) sector) are reduced by 72%

1 in 2060 compared to 2022. CO₂ continues to dominate GHG emissions, with an increased share
 2 of CH₄ from mid-century.

3



5 **Fig. 1 | Emissions and temperature projection under current pledges (near-term targets, net-zeros and**
 6 **GMP).** **a.** shows the global CO₂, CH₄ and N₂O emissions from 1990 to 2100 (including LULUCF; GHG
 7 aggregation based on GWP100 (AR5 values following the Paris Agreement rulebook²⁹)). Lines represent
 8 the total annual CO₂eq emissions from all sectors. Shaded areas in grey represent the contributions from
 9 individual gases (excluding LULUCF). Green represents LULUCF (net CO₂ fluxes over managed land),
 10 which include emissions from deforestation & degradation and sinks induced from environmental changes.
 11 Pie charts show the contributions of selected developed and developing countries/regions to cumulative
 12 CO₂eq budgets (excluding LULUCF) for three periods. Regions are 27 countries of the European Union
 13 (EU27) and 16 countries of the Eastern Mediterranean and Middle East (EMME) area (following the
 14 definition of the EMME Climate Change Initiative): Bahrain, Egypt, Iran, Iraq, Israel, Jordan, Kuwait,
 15 Lebanon, Oman, Palestine, Qatar, Saudi Arabia, Syria, Turkey, the United Arab Emirates (UAE) and Yemen
 16 (Cyprus and Greece are considered only as part of EU27 in our analysis). **b.** shows the global temperature
 17 trajectories calculated from ACC2 (red), IRF+metric (orange) and TCRE+GWP+ZEC (purple) approaches.
 18 Solid and dashed lines represent temperature projections under current pledges with unconditional and

1 conditional targets, respectively (not shown for IRF+metric). Dotted lines indicate those without GMP,
2 which are by default included in the current pledges in our analysis. Bars denote uncertainties calculated
3 from ACC2, where “a1” includes the combined effect of the uncertainty in climate sensitivity from 2.5 to
4 4°C and the range of SSPs used for gases and pollutants other than CO₂, CH₄ and N₂O (SSP1-1.9 by default),
5 “a2” includes only the effect from climate sensitivity and “a3” includes only the effect from SSPs. Pie charts
6 show the contributions for selected countries/regions to the temperature in 2030, 2060 and 2100 relative to
7 2019 based on country level emissions (excluding LULUCF) and TCRE+GWP+ZEC approach. Inserts in
8 (a) and (b) compare our emission and temperature trajectories with those from other studies^{1,4,8,9}.

10 We analyzed the emission trajectories for individual countries/regions (Fig. S3) to
11 estimate their relative contributions to emission budgets during recent historical (1990-2023),
12 mid-century (2023-2060) and end-of-century (2061-2100) periods. Major developed countries
13 (USA, EU27, Japan, Canada and UK) contributed 33% to the historical budget. As a result of
14 the current pledges, their contributions are reduced to one-third in the mid-century and nearly
15 zero in the end-of-century budget. China dominates the global CO₂eq budget, amounting to
16 22% and 34% for the historical and mid-century budgets, respectively. China’s share drops to
17 18% in the end-of-century budget owing to its net-zero commitment for 2060. The emission
18 budget during the mid- and end of the century is also strongly influenced by a group of
19 developing/transitioning countries including EMME, India, Pakistan, Russia, Indonesia,
20 Vietnam and Mexico, representing a combined share of 33% and 41% in the mid- and end-of-
21 century budget, respectively, compared to 22% in the historical budget. Within this group,
22 EMME accounts for the largest share of the end-of-century budget (18%), comparable to the
23 share of China.

24 Using the TCRE+GWP+ZEC method, we study the temperature implications of the
25 aforementioned emission pathways (Fig. 1b). The temperature rises rapidly up until 2030 due
26 to i) strong growth of CO₂ emissions without LULUCF (derived from our approach) and ii)
27 reduction in pollutant, particularly SO₂, emissions in SSP1-1.9⁵³ used for gases and pollutants
28 other than CO₂, CH₄, and N₂O (unrelated to national climate pledges). Global warming is

1 projected to reach 2.14°C and 2.05°C by the end of the century when considering unconditional
2 and conditional targets, respectively. These temperature responses are comparable to those
3 using ACC2³⁸⁻⁴⁰ (1.96 (1.39-2.6)°C and 1.88 (1.31-2.51)°C, respectively, with uncertainty
4 ranges in parentheses), but they are lower than those that using IRF with GWP*. Our end-of-
5 century projections are comparable to other studies, although certain underlying assumptions
6 may vary (Methods).

7 China contributes the largest to the temperatures, followed by EMME and India across
8 all time points. China causes an increase of 0.25°C by 2100 relative to 2019 levels with a crucial
9 amount of warming during 2020-2040. This estimate is larger than IAM estimates for the 1.5°C
10 target⁵⁴ also because of deep negative CO₂ emissions beyond net-zero typically assumed⁵⁵.
11 EMME contributes a combined share of 10% to warming up to 2030 and 2060 each, which
12 increases to 13% in 2100, or warming of 0.1°C. Since a substantial fraction of these countries
13 do not have any long-term strategy, their contribution amplifies during the latter half of the
14 century. India contributes 7-10% of warming at all time points, or warming of 0.06°C by 2100.

15

16 **Impacts of enhanced or delayed national climate pledges**

17 We further explored a suite of emissions pathways with enhanced pledges by country (Table 1
18 and Figs. 2, S4, and S5) to identify key potential enhancements for next NDC revisions.
19 Inspired by the seminal work of Pacala and Socolow⁵⁶, we present such pledges as wedges.
20 Note, however, that our wedges are not always mutually exclusive. In other words, the actual
21 benefit of a wedge may depend to some extent on the presence of another wedge (the overlaps
22 of wedges).

23 Ratcheting up the near-term conditional reduction targets by 10% (NDC01) (e.g., a
24 target of X% increases to 1.1*X%) could lead to further reductions of 5 GtCO₂eq yr⁻¹ in 2030
25 and 2050 each, saving 220 GtCO₂eq during 2023-2100 and avoiding warming of 0.1°C. China,

1 India and USA can provide the maximum benefit by increasing their near-term targets. On the
 2 contrary, failing to achieve their unconditional targets by 10% (NDC02) could increase
 3 emissions by 5 GtCO₂eq/yr in 2030 and 2050 each, adding 200 GtCO₂eq during 2023-2100
 4 with warming of 0.1°C.

5

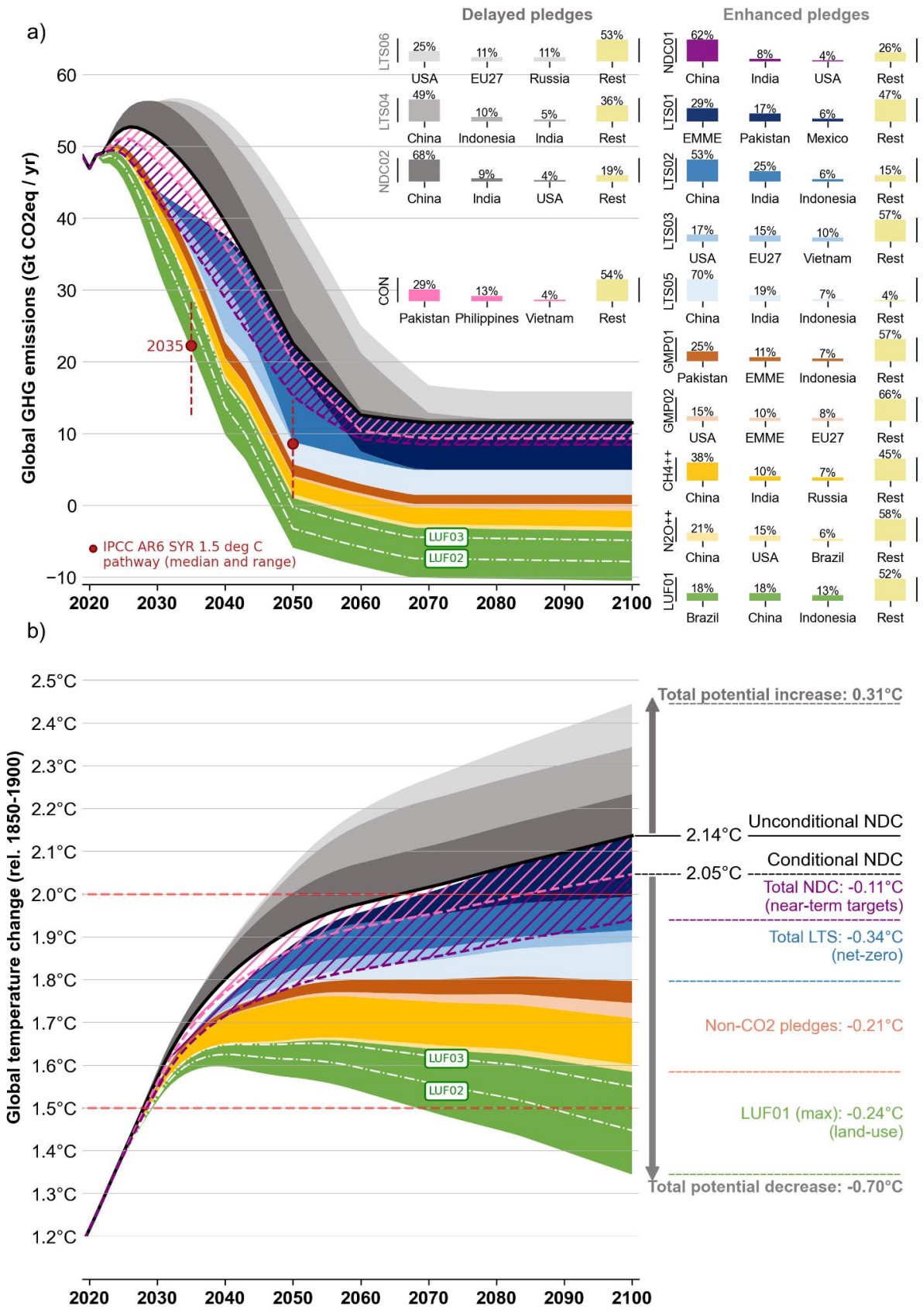
6 **Table 1** | Enhanced or delayed national climate pledges. All net-zero targets are represented as LTSs for the
 7 sake of presentation (many countries include net-zero targets in their NDCs at UNFCCC). *Grey shaded
 8 rows represent delayed pledges. #Higher/lower reduction targets refer to either conditional and unconditional
 9 targets, respectively, or the upper and lower range of the target, respectively.

10

Near-term targets from Nationally Determined Contributions (NDCs)	
NDC01	Current levels of all higher reduction targets# for 2030 are further increased by 10%.
NDC02*	Current levels of all lower reduction targets# for 2030 are further decreased by 10%.
Global Methane Pledge (GMP) and additional non-CO₂ mitigation targets	
GMP01	GMP is additional to the near-term reductions targets declared in NDCs.
GMP02	All countries continue to reduce CH ₄ emissions after 2030 to achieve a further 30% reduction by 2100 from 2030 levels.
CH₄++	Countries without GMP reduce CH ₄ emissions by 30% (relative to 2022) in 2030 and all countries reduce CH ₄ emissions by 40% (relative to 2022) in 2035.
N₂O++	All countries reduce N ₂ O emissions by 13% (relative to 2022) in 2030 and by 18% (relative to 2022) in 2035.
Net-zero targets from Long-Term Strategies (LTSs) and NDCs	
LTS01	Countries currently having no long-term target reach net-zero in 2070.
LTS02	Countries currently having a net-zero target after 2050 reach net-zero in 2050.
LTS03	Countries with a 2050 net zero target year reach net-zero in 2040.
LTS04*	Countries currently having a net-zero target delay it by 10 years.
LTS05	Countries currently with a net-zero target follow a net-zero GHG.
LTS06*	Countries currently with a net-zero target follow a net-zero CO ₂ only.
Glasgow Leaders' Declaration on Forests and Land Use (LUF)	
LUF01	Stopping deforestation with reforestation continuing at current levels + 100% control of forest degradation.
LUF02	Partial control on current deforestation with reforestation continuing at current levels + 50% control of forest degradation.
LUF03	Continued deforestation at current levels but with increasing reforestation + 10% control of forest degradation

11

12



1

2 **Fig. 2 | Emissions and temperature responses to enhanced or delayed national climate pledges. a.**

3 Changes to global annual CO₂eq emissions per enhanced/delayed pledge (GHG aggregation based on

1 GWP100) and contribution by top three countries to changes in cumulative emissions from 2020-2100 for
2 each enhanced/delayed pledge. **b.** Changes to global temperatures per enhanced/delayed pledge as calculated
3 by the TCRE+GWP+ZEC approach. “CON” indicates the difference between conditional and unconditional
4 targets from countries declaring both. CON and NDC01 pledges (hatched) are shown in a separate layer
5 from other pledges (shaded) due to their potential inter-dependency (as indicated by the overlaps of pledges).

7 EU27 and 52 other countries proposed to achieve neutrality by 2050 and 14 aim to
8 achieve it no later than 2070. If all these countries strive to achieve it by 2050 (LTS02), this
9 would reduce 11 GtCO₂eq/yr in 2050 and save 180 GtCO₂eq during 2023-2070, avoiding
10 warming of 0.08°C. China, India and Indonesia can provide the maximum benefit here. If
11 countries with a net-zero target by 2050 (mainly developed countries) raise their ambition to
12 achieve it by 2040 (LTS03) as in the COP28 draft negotiation text¹⁴, it would reduce 7
13 GtCO₂eq/yr in 2040 and 65 GtCO₂eq during 2023-2050, avoiding 0.03°C. Furthermore, among
14 countries with a net-zero target, eight countries have proposed a CO₂ only target and eight have
15 an unclear target (assumed CO₂ only). If these also shift to a GHG net-zero (LTS05), it would
16 reduce 3 GtCO₂eq/yr in 2050 and 203 GtCO₂eq during 2023-2100, avoiding 0.09°C. On the
17 contrary, if all countries delay their respective neutrality target by 10 years (LTS04), it would
18 increase emissions by 11 GtCO₂eq/yr in 2050, adding 249 GtCO₂eq with 0.1°C warming in
19 2100. Over 90 countries currently have no long-term targets. If they introduce a CO₂ net-zero
20 by 2070 (LTS01), this could reduce 2.7 GtCO₂eq/yr in 2050, saving 316 GtCO₂eq and avoiding
21 0.14°C. EMME, Pakistan and Vietnam can provide the maximum benefit here.

22 It is not clear if GMP should be considered part of or additional to CO₂eq reduction in
23 NDCs. Our baseline is kept conservative, assuming the former. Otherwise (GMP01), it would
24 reduce 0.05°C warming in 2100. In the absence of any specific target, we assume constant CH₄
25 emissions after 2030, while noting that our approach does not take into account multiple gas
26 abatements from a single source (e.g. refs.^{57,58}). While 155 countries have already joined GMP,
27 major CH₄ emitters such as Russia, China and India⁵⁹ have yet to join. Thus, if all countries

1 reduce 30% of CH₄ emissions by 2030 and 40% by 2035 (CH₄++) as in the COP28 draft
2 negotiation text, it would further reduce 2 GtCO₂eq/yr in 2050 with a reduction of 166 GtCO₂eq
3 during 2023-2100, avoiding 0.10°C. Additionally, if all countries reduce 13% of N₂O
4 emissions by 2030 and 18% by 2035 (N₂O++), it would reduce 37 GtCO₂eq during 2023-2100,
5 avoiding 0.02°C warming.

6 Over 140 countries committed LUF, but implications of this strategy are sensitive to its
7 interpretation⁶⁰. Among possible interpretations, “end gross forest loss” leads to maximum
8 reduction of CO₂ budget, leading to even negative CO₂ emissions after 2030. “End tree cover
9 lost” has the least benefit with marginal reductions during the latter half of the century. LUF
10 has the potential to lower warming by 0.03-0.2°C in 2100, depending on its interpretation (see
11 Methods).

12 Finally, if all these pledges are implemented together, it would reduce 18 GtCO₂eq/yr
13 in 2030 and 34 GtCO₂eq/yr in 2050 relative to current pledges with unconditional targets. This
14 is equivalent to GHG emission reductions of 55% by 2035 relative to 2019 levels, comparable
15 to 60% GHG reductions by 2035 under the IPCC 1.5°C pathway⁶¹. Under these most optimistic
16 assumptions, the end-of-century warming would be 1.35°C, and the 1.5°C target could be
17 achieved however still with overshoot.

18

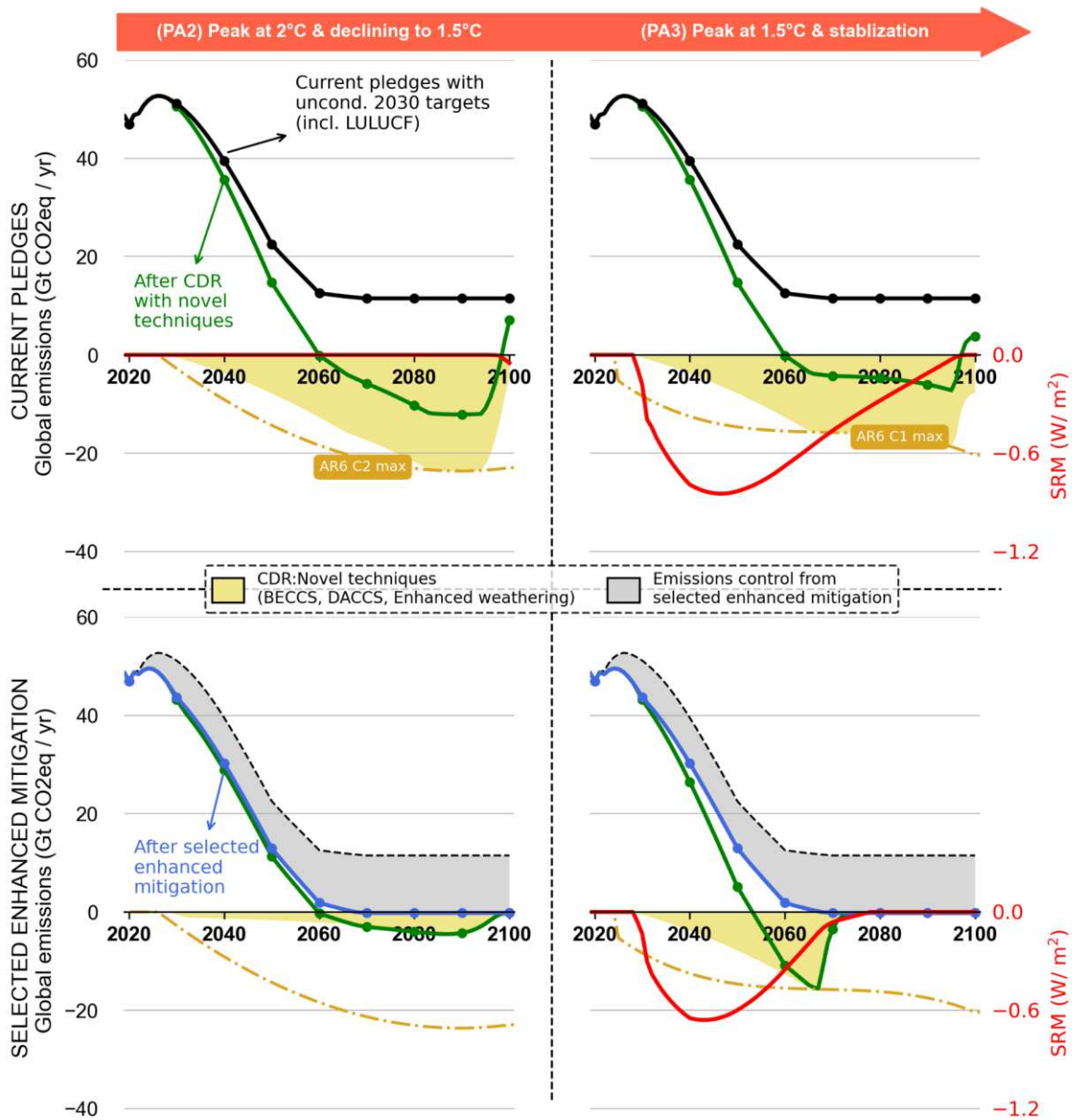
19 **Supplemental strategies to comply with the Paris Agreement objectives**

20 Our results highlight that global commitments are currently not aligned with the Paris
21 temperature target. To supplement conventional mitigation efforts, we explore the potential
22 contributions of novel CDR and SRM strategies. Conventional CDR techniques include
23 afforestation, reforestation, management of existing forests and all nature based solutions^{62,63}.
24 We assume that these would be already accounted for in current pledges, as well as in the
25 enhanced/delayed pledges, which allows us to assess the role of novel CDR separately from

1 pledges. Currently novel CDR constitutes only a negligible removal of 0.002 GtCO₂/yr⁴⁶. CDR
2 can be counted as removal under the Agreement, despite concerns about uncertainty; however,
3 it is more difficult to justify recognition of SRM under the Agreement because it does not
4 directly affect emissions or removals.

5 Among various views^{39,64,65}, we draw three possible interpretations of the Paris target
6 whereby global temperatures i) peak at 2°C and remain stable henceforth (PA1), ii) peak at 2°C
7 and declining linearly to 1.5°C by 2100 (PA2) and iii) peak at 1.5°C and remain stable
8 henceforth (PA3). These are analogous to the typology of AR6 scenarios: those which keep
9 warming below 2°C (C3), warming below 1.5°C with high overshoot (C2) and without or with
10 low overshoot (C1). For each interpretation, we explore the required levels of novel CDR and
11 SRM to compensate for the remaining gap not met with current pledges (Methods). We
12 prioritize novel CDR; in other words, SRM can be operationalized only if the desired
13 temperature target is infeasible with novel CDR alone, considering CDR levels reported in
14 AR6.

15 Under current pledges with unconditional targets, complying with the Agreement
16 would require considerable deployment of novel CDR, particularly for 1.5°C (Fig. 3). For PA1,
17 no CDR or SRM is required as the temperature is just below 2°C. For PA2, deployment could
18 start around 2029, removing up to -8 GtCO₂/yr in 2050 and -24 GtCO₂/yr during 2085-2094,
19 following the maximum removal rates reported for C2 scenarios. Finally, for PA3, even with
20 maximum CDR levels for C1 scenarios, CDR alone could not stabilize the temperatures to
21 1.5°C, especially during 2030-2035. Thus, it would have to be supplemented with SRM at high
22 levels (up to -0.8 W/m², roughly equivalent to a Mount Pinatubo eruption for every eight
23 years⁶⁶) initially, followed by a gradual decrease.



1

2 **Fig. 3 | Supplementary strategies to comply with the Paris Agreement objectives.** Levels of novel CDR
 3 and SRM compatible with different interpretations of the Paris temperature target under current pledges with
 4 unconditional targets (top panels) and with selected enhanced pledges (bottom panels). Only the results for
 5 PA2 and PA3 are shown since PA1 (peak warming of 1.96 °C) does not require any novel CDR and SRM.

6

7 We further explored the extent to which novel CDR and SRM are required with a selected
 8 combination of enhanced pledges (conditional targets, GMP01, LTS01 and LUF02). PA2
 9 would be feasible with limited CDR starting from 2029 and reaching a maximum of -4
 10 GtCO₂eq/yr by 2077. However, PA3 would still require SRM, albeit at a lower level. This

1 suggests that, while the selected pledges can reduce the CDR and SRM levels, it cannot totally
2 negate their need, in particular SRM, for the most ambitious interpretation of the Paris
3 objectives. Our analysis further suggests that PA3 requires SRM to begin no later than 2029.
4 Since it may take about 10 years from now to prepare for SRM deployment⁶⁷, it could be further
5 argued that achieving the 1.5°C target without overshoot is not feasible, even with SRM.

7 **Recommendations for future national climate pledges**

8 We put forward the following key recommendations that can guide the next revisions of
9 national pledges.

- 10 • Commitment to a mid-century net-zero target for all countries, in particular the EMME
11 countries, and an earlier net-zero target for developed countries
- 12 • Expansion of the GMP signatories to include countries such as China, India and Russia
- 13 • Ambitious implementation of LUF to substantiate emission reductions

14 Missing near-term targets by 10% or delaying net-zero targets by 10 years could each
15 add 0.1°C to the end-of-century warming, underscoring the importance of implementing
16 pledges once made⁶⁸. While each enhanced pledge could lower the warming in 2100, it is only
17 through net-zero CO₂ or GHG emissions at the global scale and/or increasing land sinks that
18 could effectively halt the warming. Other enhanced pledges are also important but only delay
19 the year of reaching 2°C.

20 If current pledges are fully realized, novel CDR would be strong enough to keep the
21 end-of-century temperature below 1.5°C. However, achieving the 1.5°C target without
22 overshoot would be impossible without SRM in the near term. In light of this finding, while
23 further evaluation of the SRM scenario is warranted, we call for a reassessment of the
24 interpretation of the 1.5°C target⁶⁹. The 1.5°C target has been, in our view, crucial in conveying
25 the urgency of climate action; however, a paradigm shift is now necessary to move away from

1 adherence to a hard 1.5°C ceiling to a more flexible interpretation that allows the development
2 of strategies for limiting further overshoot and ultimately reducing the warming towards 1.5°C,
3 accompanied by strategies for adaptation, since every 0.1°C of warming counts. Our study
4 demonstrates unequivocally that it is now unavoidable to exceed 1.5°C. We argue that this
5 message should be clearly and honestly conveyed to policymakers, while emphasizing the
6 importance of reducing the warming to 1.5°C⁷⁰ and addressing the associated research
7 questions⁷¹.

8 Transparency lies at the core of assessing progress and planning future actions. We
9 have demonstrated a simple, traceable method for calculating emission and temperature
10 projections by countries (Figs. S3 to S5), bringing much needed transparency to this ongoing
11 debate. Our approach may serve as a basis for informing the forthcoming revisions of NDCs.

12

13 **References**

- 14 1. UNEP. *Emissions Gap Report 2023: Broken Record – Temperatures Hit New Highs, yet World*
15 *Fails to Cut Emissions (Again)*. (2023).
- 16 2. UNFCCC. *Nationally determined contributions under the Paris Agreement: Synthesis report by*
17 *the secretariat*. (2023).
- 18 3. Rogelj, J. *et al.* Credibility gap in net-zero climate targets leaves world at high risk. *Science* **380**,
19 1014–1016 (2023).
- 20 4. Climate Action Tracker. *Warming Projections Global Update Climate Action Tracker December*
21 *2023*. (2023).
- 22 5. Geiges, A. *et al.* Incremental improvements of 2030 targets insufficient to achieve the Paris
23 Agreement goals. *Earth Syst. Dyn.* **11**, 697–708 (2020).
- 24 6. Liu, P. R. & Raftery, A. E. Country-based rate of emissions reductions should increase by 80%
25 beyond nationally determined contributions to meet the 2 °C target. *Commun. Earth Environ.* **2**,
26 29 (2021).
- 27 7. Ou, Y. *et al.* Can updated climate pledges limit warming well below 2°C? *Science* **374**, 693–695
28 (2021).
- 29 8. Meinshausen, M. *et al.* Realization of Paris Agreement pledges may limit warming just below
30 2 °C. *Nature* **604**, 304–309 (2022).
- 31 9. Iyer, G. *et al.* Ratcheting of climate pledges needed to limit peak global warming. *Nat. Clim.*

- 1 *Change* **12**, 1129–1135 (2022).
- 2 10. UNFCCC. Outcome of the first global stocktake. Conference of the Parties serving as the meeting
3 of the Parties to the Paris Agreement. (2023).
- 4 11. Climate & Clean Air Coalition Secretariat (CCAC). Global Methane Pledge.
5 <https://www.globalmethanepledge.org/> (2021).
- 6 12. UN Climate Change Conference UK 2021. Glasgow Leaders’ Declaration on Forests and Land
7 Use - UN Climate Change Conference (COP26) at the SEC – Glasgow 2021.
8 <https://webarchive.nationalarchives.gov.uk/ukgwa/20230418175226/https://ukcop26.org/glasgow-leaders-declaration-on-forests-and-land-use/> (2021).
- 9
10 13. US Department of State. Sunnylands Statement on Enhancing Cooperation to Address the Climate
11 Crisis. <https://www.state.gov/sunnylands-statement-on-enhancing-cooperation-to-address-the-climate-crisis/> (2023).
- 12
13 14. UNFCCC. Draft Text on CMA agenda item 4 First global stocktake under the Paris Agreement:
14 Version 8/12/2023 15:30. (2023).
- 15 15. Gambhir, A., Butnar, I., Li, P.-H., Smith, P. & Strachan, N. A Review of Criticisms of Integrated
16 Assessment Models and Proposed Approaches to Address These, through the Lens of BECCS.
17 *Energies* **12**, 1747 (2019).
- 18 16. Benveniste, H., Boucher, O., Guivarch, C., Treut, H. L. & Criqui, P. Impacts of nationally
19 determined contributions on 2030 global greenhouse gas emissions: uncertainty analysis and
20 distribution of emissions. *Environ. Res. Lett.* **13**, 014022 (2018).
- 21 17. Edwards, M. R., McNerney, J. & Trancik, J. E. Testing emissions equivalency metrics against
22 climate policy goals. *Environ. Sci. Policy* **66**, 191–198 (2016).
- 23 18. Gütschow, J., Jeffery, M. L., Schaeffer, M. & Hare, B. Extending Near-Term Emissions Scenarios
24 to Assess Warming Implications of Paris Agreement NDCs. *Earths Future* **6**, 1242–1259 (2018).
- 25 19. Schaeffer, R. *et al.* Comparing transformation pathways across major economies. *Clim. Change*
26 **162**, 1787–1803 (2020).
- 27 20. Fujimori, S. *et al.* A framework for national scenarios with varying emission reductions. *Nat.*
28 *Clim. Change* **11**, 472–480 (2021).
- 29 21. Allen, M. R. *et al.* A solution to the misrepresentations of CO₂-equivalent emissions of short-
30 lived climate pollutants under ambitious mitigation. *Npj Clim. Atmospheric Sci.* **1**, 1–8 (2018).
- 31 22. Cain, M. *et al.* Improved calculation of warming-equivalent emissions for short-lived climate
32 pollutants. *Npj Clim. Atmospheric Sci.* **2**, 1–7 (2019).
- 33 23. Smith, M. A., Cain, M. & Allen, M. R. Further improvement of warming-equivalent emissions
34 calculation. *Npj Clim. Atmospheric Sci.* **4**, 1–3 (2021).
- 35 24. Allen, M. *et al.* Ensuring that offsets and other internationally transferred mitigation outcomes
36 contribute effectively to limiting global warming. *Environ. Res. Lett.* **16**, 074009 (2021).
- 37 25. Lynch, J., Cain, M., Pierrehumbert, R. & Allen, M. Demonstrating GWP*: a means of reporting

- 1 warming-equivalent emissions that captures the contrasting impacts of short- and long-lived
2 climate pollutants. *Environ. Res. Lett.* **15**, 044023 (2020).
- 3 26. Fuglestedt, J. S. *et al.* Metrics of Climate Change: Assessing Radiative Forcing and Emission
4 Indices. *Clim. Change* **58**, 267–331 (2003).
- 5 27. Tanaka, K., Peters, G. P. & Fuglestedt, J. S. Policy Update: Multicomponent climate policy: why
6 do emission metrics matter? *Carbon Manag.* **1**, 191–197 (2010).
- 7 28. Dhakal, S. *et al.* Emissions Trends and Drivers Supplementary Material. in *Climate Change 2022:*
8 *Mitigation of Climate Change. Contribution of Working Group III to the Sixth Assessment Report*
9 *of the Intergovernmental Panel on Climate Change* (2022).
- 10 29. UNFCCC. Report of the Conference of the Parties serving as the meeting of the Parties to the
11 Paris Agreement on the third part of its first session, held in Katowice from 2 to 15 December
12 2018. Addendum 2. Part two: Action taken by the Conference of the Parties serving as the meeting
13 of the Parties to the Paris Agreement. (2019).
- 14 30. Allen, M. R. *et al.* Indicate separate contributions of long-lived and short-lived greenhouse gases
15 in emission targets. *Npj Clim. Atmospheric Sci.* **5**, 1–4 (2022).
- 16 31. Matthews, H. D., Gillett, N. P., Stott, P. A. & Zickfeld, K. The proportionality of global warming
17 to cumulative carbon emissions. *Nature* **459**, 829–832 (2009).
- 18 32. Gregory, J. M., Jones, C. D., Cadule, P. & Friedlingstein, P. Quantifying Carbon Cycle Feedbacks.
19 *J. Clim.* **22**, 5232–5250 (2009).
- 20 33. Gillett, N. P., Arora, V. K., Matthews, D. & Allen, M. R. Constraining the Ratio of Global
21 Warming to Cumulative CO₂ Emissions Using CMIP5 Simulations. *J. Clim.* **26**, 6844–6858
22 (2013).
- 23 34. Canadell, J. G. *et al.* Global Carbon and other Biogeochemical Cycles and Feedbacks. in *Climate*
24 *Change 2021: The Physical Science Basis. Contribution of Working Group I to the Sixth*
25 *Assessment Report of the Intergovernmental Panel on Climate Change* (2021).
- 26 35. Koven, C. D., Sanderson, B. M. & Swann, A. L. S. Much of zero emissions commitment occurs
27 before reaching net zero emissions. *Environ. Res. Lett.* **18**, 014017 (2023).
- 28 36. Jones, C. D. *et al.* The Zero Emissions Commitment Model Intercomparison Project (ZECMIP)
29 contribution to C4MIP: quantifying committed climate changes following zero carbon emissions.
30 *Geosci. Model Dev.* **12**, 4375–4385 (2019).
- 31 37. MacDougall, A. H. *et al.* Is there warming in the pipeline? A multi-model analysis of the Zero
32 Emissions Commitment from CO₂. *Biogeosciences* **17**, 2987–3016 (2020).
- 33 38. Tanaka, K. *et al.* *Aggregated Carbon Cycle, Atmospheric Chemistry and Climate Model (ACC2):*
34 *Description of Forward and Inverse Mode.* (2007).
- 35 39. Tanaka, K. & O'Neill, B. C. The Paris Agreement zero-emissions goal is not always consistent
36 with the 1.5 °C and 2 °C temperature targets. *Nat. Clim. Change* **8**, 319–324 (2018).
- 37 40. Tanaka, K., Boucher, O., Ciais, P., Johansson, D. J. A. & Morfeldt, J. Cost-effective

- 1 implementation of the Paris Agreement using flexible greenhouse gas metrics. *Sci. Adv.* **7**,
2 eabf9020 (2021).
- 3 41. Myhre, G. *et al.* Anthropogenic and Natural Radiative Forcing Supplementary Material. in
4 *Climate Change 2013: The Physical Science Basis. Contribution of Working Group I to the Fifth*
5 *Assessment Report of the Intergovernmental Panel on Climate Change* (2013).
- 6 42. Smith, P. *et al.* Biophysical and economic limits to negative CO₂ emissions. *Nat. Clim. Change*
7 **6**, 42–50 (2016).
- 8 43. Fuss, S. *et al.* Negative emissions—Part 2: Costs, potentials and side effects. *Environ. Res. Lett.*
9 **13**, 063002 (2018).
- 10 44. MacMartin, D. G., Ricke, K. L. & Keith, D. W. Solar geoengineering as part of an overall strategy
11 for meeting the 1.5°C Paris target. *Philos. Trans. R. Soc. Math. Phys. Eng. Sci.* **376**, 20160454
12 (2018).
- 13 45. Hansen, J. E. *et al.* Global warming in the pipeline. *Oxf. Open Clim. Change* **3**, kgad008 (2023).
- 14 46. Smith, S. M. *et al.* *The State of Carbon Dioxide Removal - 1st Edition.* (2023).
- 15 47. Goll, D. S. *et al.* Potential CO₂ removal from enhanced weathering by ecosystem responses to
16 powdered rock. *Nat. Geosci.* **14**, 545–549 (2021).
- 17 48. MacMartin, D. G. *et al.* Scenarios for modeling solar radiation modification. *Proc. Natl. Acad.*
18 *Sci.* **119**, e2202230119 (2022).
- 19 49. Robock, A. Benefits and risks of stratospheric solar radiation management for climate intervention
20 (geoengineering). *The Bridge* **50**, (2020).
- 21 50. Keith, D. W. Toward constructive disagreement about geoengineering. *Science* **374**, 812–815
22 (2021).
- 23 51. UNFCCC. Nationally Determined Contributions Registry. <https://unfccc.int/NDCREG> (2023).
- 24 52. UNFCCC. Long-term strategies portal. [https://unfccc.int/process/the-paris-agreement/long-term-](https://unfccc.int/process/the-paris-agreement/long-term-strategies)
25 [strategies](https://unfccc.int/process/the-paris-agreement/long-term-strategies) (2023).
- 26 53. Riahi, K. *et al.* The Shared Socioeconomic Pathways and their energy, land use, and greenhouse
27 gas emissions implications: An overview. *Glob. Environ. Change* **42**, 153–168 (2017).
- 28 54. Xiong, W., Tanaka, K., Ciais, P. & Yan, L. Evaluating China’s Role in Achieving the 1.5 °C
29 Target of the Paris Agreement. *Energies* **15**, 6002 (2022).
- 30 55. Su, X., Tachiiri, K., Tanaka, K., Watanabe, M. & Kawamiya, M. Identifying crucial emission
31 sources under low forcing scenarios by a comprehensive attribution analysis. *One Earth* **5**, 1354–
32 1366 (2022).
- 33 56. Pacala, S. & Socolow, R. Stabilization Wedges: Solving the Climate Problem for the Next 50
34 Years with Current Technologies. *Science* **305**, 968–972 (2004).
- 35 57. Tanaka, K., Cavalett, O., Collins, W. J. & Cherubini, F. Asserting the climate benefits of the coal-
36 to-gas shift across temporal and spatial scales. *Nat. Clim. Change* **9**, 389–396 (2019).
- 37 58. Tibrewal, K. & Venkataraman, C. Climate co-benefits of air quality and clean energy policy in

- 1 India. *Nat. Sustain.* **4**, 305–313 (2021).
- 2 59. Saunio, M. *et al.* The Global Methane Budget 2000–2017. *Earth Syst. Sci. Data* **12**, 1561–1623
3 (2020).
- 4 60. Gasser, T., Ciais, P. & Lewis, S. L. How the Glasgow Declaration on Forests can help keep alive
5 the 1.5 °C target. *Proc. Natl. Acad. Sci.* **119**, e2200519119 (2022).
- 6 61. IPCC. Summary for Policymakers. in *Climate Change 2023: Synthesis Report. Contribution of*
7 *Working Groups I, II and III to the Sixth Assessment Report of the Intergovernmental Panel on*
8 *Climate Change* (2023).
- 9 62. Griscom, B. W. *et al.* National mitigation potential from natural climate solutions in the tropics.
10 *Philos. Trans. R. Soc. B Biol. Sci.* **375**, 20190126 (2020).
- 11 63. Chapman, M. *et al.* Large climate mitigation potential from adding trees to agricultural lands.
12 *Glob. Change Biol.* **26**, 4357–4365 (2020).
- 13 64. Fuglestedt, J. *et al.* Implications of possible interpretations of ‘greenhouse gas balance’ in the
14 Paris Agreement. *Philos. Trans. R. Soc. Math. Phys. Eng. Sci.* **376**, 20160445 (2018).
- 15 65. Schleussner, C.-F., Ganti, G., Rogelj, J. & Gidden, M. J. An emission pathway classification
16 reflecting the Paris Agreement climate objectives. *Commun. Earth Environ.* **3**, 1–11 (2022).
- 17 66. Wigley, T. M. L. A Combined Mitigation/Geoengineering Approach to Climate Stabilization.
18 *Science* **314**, 452–454 (2006).
- 19 67. Smith, W. & Wagner, G. Stratospheric aerosol injection tactics and costs in the first 15 years of
20 deployment. *Environ. Res. Lett.* **13**, 124001 (2018).
- 21 68. Dubash, N. K. Rebalance attention from global target setting toward national climate politics and
22 policy. *Science* **382**, eadk7428 (2023).
- 23 69. Boucher, O. *et al.* In the wake of Paris Agreement, scientists must embrace new directions for
24 climate change research. *Proc. Natl. Acad. Sci.* **113**, 7287–7290 (2016).
- 25 70. Reisinger, A. & Geden, O. Temporary overshoot: Origins, prospects, and a long path ahead. *One*
26 *Earth* **6**, 1631–1637 (2023).
- 27 71. Future Earth, The Earth League, WCRP. *10 New Insights in Climate Science 2023/2024.*
28 10.5281/zenodo.10251586 (2023).

29

30 **Data and materials availability** All data needed to evaluate the conclusions in the paper are present in
31 the paper and/or the Supplementary Materials and are available on Zenodo with
32 doi.org/10.5281/zenodo.10424311.

33

34 **Acknowledgments** We are grateful for helpful comments and suggestions from Yann Gaucher,
35 Temuulen Murun, Jean Sciare, Weiwei Xiong, Biqing Zhu, and Eric Zusman. We appreciate the initial
36 help from Clara Thuelin for compiling and processing the NDC files. This work was conducted as part
37 of the Achieving the Paris Agreement Temperature Targets after Overshoot (PRATO) Project under the

1 Make Our Planet Great Again (MOPGA) Program and benefited from State assistance managed by the
2 National Research Agency in France under the Programme d'Investissements d'Avenir under the
3 reference ANR-19-MPGA-0008. This project has received funding from the European Union's Horizon
4 Europe research and innovation program under Grant Agreement N° 101071247 (Edu4Climate –
5 European Higher Education Institutions Network for Climate and Atmospheric Sciences). K. Tibrewal
6 is supported by the European Union's Horizon 2020 research and innovation program under Grant
7 Agreement N° 856612 (EMME-CARE – Climate change, atmospheric research centre in Eastern
8 Mediterranean and Middle East Region). We further acknowledge the European Union's Horizon
9 Europe research and innovation program under Grant Agreement N° 101056939 (RESCUE – Response
10 of the Earth System to overshoot, Climate neUtrality and negative Emissions), Grant Agreement N°
11 101081193 (OptimESM – Optimal High Resolution Earth System Models for Exploring Future Climate
12 Changes) and Grant Agreement N° 820829 (CONSTRAIN – Constraining uncertainty of multi-decadal
13 climate projections).

14
15 **Author contributions** O.B. and K.Ta conceived this study. K.Ti., K.Ta, and O.B. designed the
16 experiment. K.Ti, K.Ta, and O.B. performed the analysis. K.Ti generated the figures and tables. K.Ti.,
17 K.Ta, P.C., and O.B. analyzed the results. K.Ti. and K.Ta drafted the manuscript, with contributions
18 from all coauthors.

19
20 **Competing interests** The authors declare that they have no competing interests.

21
22 **Supplementary Information** Supplementary information for this article is available.

23

1 **Methods**

2 Emission datasets

3 To develop future projections of emissions and temperature changes, we have compiled a time
4 series of emissions from multiple datasets. Historical emissions of CO₂, CH₄ and N₂O from
5 1990-2022 for major IPCC sectors (Energy, Industrial Processes and Product Use, Agriculture
6 and Waste) are obtained for each country from the latest version of PRIMAP-hist v2.5^{72,73}.
7 Global emissions for international aviation and shipping for 1970-2022 are obtained from
8 EDGARv8⁷⁴.

9 CO₂ flux from LULUCF, also referred to as forestry and other land use (FOLU),
10 comprises emissions from deforestation, sinks from forests over managed land and emissions
11 due to forest degradation. Historical CO₂ fluxes (1750-2020) for deforestation per country are
12 obtained from the OSCAR bookkeeping model (34,35) and sinks over managed land are based
13 on dynamic global vegetation models (DGVMs)⁷⁷, both of which are part of the Global Carbon
14 Budget 2022⁷⁶. Emissions from forest degradation can be quite significant for tropical forests
15 and roughly represent one-third of emissions from deforestation at the global level with even
16 higher contributions for certain countries⁷⁸. Due to lack of comprehensive data, historical
17 emissions from forest degradation are developed at a global level assuming one-third of total
18 deforestation emissions from the 74 tropical countries listed in ref.⁷⁸.

19 Global emissions for other climate forcers including the fluorinated GHGs
20 (chlorofluorocarbons - CFCs, hydrochlorofluorocarbons - HCFCs, hydrofluorocarbons - HFCs,
21 perfluorocarbons - PFCs, sulphur hexafluoride - SF₆) and air pollutants and aerosol
22 precursors (SO₂, NO_x, VOCs, CO, constituents of particulate matter) are assumed from SSP1-
23 1.9 (default) for the period 1990-2100⁵³.

24

1 Interpreting climate pledges

2 Modeling of future emissions begins by collecting and interpreting information contained in
3 NDCs. Near-term targets usually consist of a CO₂ or GHG reduction level in their NDCs. For
4 each country we use the latest version of their NDC (cut-off date: 13 December 2023)⁵¹. These
5 are declared in one of the following ways: i) as a reduction in their carbon intensity (i.e. carbon
6 emissions per unit of gross domestic product), ii) with respect to a projected BAU emissions
7 in 2030 or iii) with respect to emissions in a past year (usually 1990, 2005 or 2010, among
8 others). The reduction level is usually expressed as percentage reduction in CO₂ only or CO₂eq
9 emissions in 2030 with respect to the base (either 2030-BAU or past year) combining all major
10 (CO₂, CH₄, N₂O) and sometimes additional (PFCs, HFCs, SF₆, and NF₃) GHGs, or so-called
11 Kyoto gases, using GWP100 as a common metric²⁹. Some countries declare two targets, one
12 that can be attained using indigenous resources (unconditional target) and the other with some
13 additional reduction subject to international support (conditional target). Some countries
14 declare a range of emission reduction rather than a single number. Our “higher reduction targets”
15 account for conditional targets and upper ranges of emission reduction targets. Our “lower
16 reduction targets” consider unconditional targets and lower ranges of emission reduction
17 targets. The emissions levels in the base year as well as proposed targets are obtained for
18 individual countries from their official NDCs submitted to the UNFCCC⁵¹.

19 Long-term goals refer to the target year (i.e., 2050, 2060 or 2070) for achieving either
20 net-zero emissions or larger reductions than 2030. Net-zero emissions can be defined in two
21 ways: a) net-zero GHG emissions, which consider emissions from several GHGs (i.e., GHG
22 neutrality) and b) net-zero CO₂ emissions, which consider only CO₂ (i.e., carbon neutrality).
23 Achieving net-zero GHGs would require “negative” CO₂ emissions i.e., a net carbon sink, to
24 compensate for residual non-CO₂ emissions from difficult-to-abate sectors^{39,64}. We obtain
25 specific net-zero types from the respective LTS submitted by the countries, as well as NDCs,

1 since some countries include long-term goals in NDCs. In the absence of any clear indication,
2 we assume net-zero emissions for only CO₂. The declared target years for different countries
3 are mostly collected from the official UNFCCC repository⁵². Furthermore, we assume that net-
4 zero targets are intended for emissions other than LULUCF, unless explicitly stated otherwise
5 in national pledges. This means that our long-term emission estimates are on the conservative
6 side due to the strict interpretation of net-zero targets.

7 Information on both near-term and long-term targets for international aviation and
8 maritime transport are obtained from statements released by International Civil Aviation
9 Organisation (ICAO)⁷⁹ and International Maritime Organisation (IMO)⁸⁰, respectively. For
10 international aviation, near-term assumes constant emissions from 2019 levels following the
11 carbon neutral growth from 2020 onwards as per ICAO and net-zero in 2050 as per
12 International Air Transport Association. For international shipping, near-term assumes 20-30%
13 reductions by 2030 compared to 2008 levels and net-zero in 2050 following revised targets by
14 IMO in July 2023.

15 We have collected the list of countries participating in GMP to model CH₄ emissions¹¹.
16 These countries commit to reduce their CH₄ emissions to achieve a global CH₄ reduction of
17 30% by 2030 compared to 2020 levels. Since the countries participating in GMP contribute
18 less than 60% to global CH₄ emissions, achieving GMP would require these countries to reduce
19 their current CH₄ emissions by 45%. However, given that it is a highly challenging task, we
20 have assumed a conservative scenario where each GMP participating country achieves at least
21 30% reduction in CH₄ emissions.

22 In regard to LUF, future CO₂ emissions from forest deforestation can vary significantly
23 depending on how countries interpret “halting deforestation”. Ref.⁶⁰ presented three possible
24 interpretations - a) “end gross forest loss” (stopping deforestation with reforestation continuing
25 at current levels), b) “end net forest loss” (partial control on current deforestation with

1 reforestation continuing at current levels) and c) “end tree cover loss” (continued deforestation
2 at current levels but with increasing reforestation) and compared it against a BAU scenario
3 (BAU_deforestation), extrapolating trends from 2015-2020 until 2030 and maintaining that
4 level afterwards. However, it did not include emissions control from forest degradation. We
5 developed scenarios for future emissions related to forest degradation. We first developed
6 baseline emissions for forest degradation (BAU_degradation) by taking one-third of the total
7 emissions from BAU_deforestation for 74 tropical countries listed in ref.⁷⁸. With respect to this,
8 we developed three scenarios with 100%, 50% and 10% reductions of degradation emissions
9 for “end gross forest loss,” “end net forest loss,” and “end tree cover loss,” respectively, from
10 2022 onwards and merged with the deforestation scenarios.

11

12 Modeling future emissions excluding LULUCF

13 After compiling various pledges, future CO₂, CH₄ and N₂O emissions are first estimated for
14 specific time points (i.e., 2030 and the net-zero target year) and then inter- and extrapolated
15 throughout 2022-2100 for each country separately by using an emission model described below.
16 Our emission model assumes that GHGs include CO₂, CH₄ and N₂O. These are the three most
17 important GHGs, which largely determine future temperature projections. Air pollutants, which
18 can also significantly influence the temperatures, have limited representation in national
19 climate pledges and are assumed to follow SSP1-1.9 in our analysis.

20 N₂O emissions are kept at 2022 levels from PRIMAP-hist till 2100. For countries
21 following GMP, CH₄ emissions in 2030 are obtained by reducing 30% from 2020 levels in
22 PRIMAP-hist. For other nations, CH₄ emissions in 2030 are scaled proportionally to the ratio
23 of CO₂eq emissions (excluding LULUCF) and CH₄ emissions in the base year. CH₄ emissions
24 are linearly interpolated between 2018 and 2030 and then assumed to be constant at 2030 levels
25 till 2100.

1 CO₂ emissions involve a more complex approach. We begin by estimating the
2 emissions in 2030 based on the near-term targets from NDCs. In general, countries report total
3 sectoral emissions (base year and/or BAU 2030) and corresponding reduction targets. There
4 are variations among countries regarding the sectors covered in their respective NDC. Some
5 countries may include the LULUCF sector in their reported emissions and reduction targets.
6 So we first modify the reported emissions (for base year and BAU 2030) and reduction targets
7 such that it does not include the LULUCF sector. For countries that report emissions and
8 reduction targets by each sector, we consider values without the LULUCF sector. For countries
9 that include the LULUCF sector in their NDC but do not provide separate sectoral values for
10 emissions and targets, we generate the emissions without LULUCF (for base year and/or BAU
11 2030) by subtracting the LULUCF flux compiled by ref.⁷⁷ from the total CO₂eq emissions in
12 the NDC. In the latter case, we assume the same values for percentage reduction targets without
13 LULUCF as given for the total sectors. Finally, emissions are combined with the corresponding
14 unconditional and conditional targets to arrive at the CO₂eq emissions without LULUCF in
15 2030.

16 Since more than two-thirds of the countries include either/all of the three – CO₂, CH₄
17 and N₂O – with unclear or no mention of other GHGs, we distribute the total CO₂eq among
18 these three gases through the method described above. Furthermore, it is assumed that any
19 reductions in CH₄ will cater to both NDC target and CH₄ pledge (i.e., our base assumption is
20 that CH₄ reductions via GMP are also counted as part of progress toward meeting NDC). Thus,
21 2030 emissions for N₂O and CH₄ as calculated above are converted to CO₂eq using GWP100
22 values in IPCC AR5 as adopted by the Paris Agreement rulebook (265 and 28 for N₂O and
23 CH₄, respectively) and subtracted from the total 2030 CO₂eq emissions to obtain the values for
24 CO₂ emissions in 2030. This implies that the use of a non-CO₂ pledge can result in an increase
25 in CO₂ emissions, which can be further sustained under our model assumptions. For example,

1 a scenario with no GMP will give lower CO₂ emissions as now more CO₂ has to be reduced to
 2 meet the desired reductions in total CO₂eq in 2030 and in the neutrality year (if net-zero is for
 3 GHG). Note further that for countries where NDC does not provide any base value (primarily
 4 for the past year), we assume the value reported in PRIMAP-hist (e.g., India, China,
 5 Kazakhstan, Kenya). For countries, where the base year emissions in PRIMAP-hist are 20%
 6 larger than those in NDC, we adjust the BAU 2030 emissions in the same proportion (e.g.,
 7 Afghanistan, Angola, Lao, Tunisia).

8 For countries without any long-term target, emissions are assumed to be constant at the
 9 2030 level up until 2100. For countries having a neutrality target, we either assign zero or
 10 negative CO₂ emissions compensating for CH₄ and N₂O emissions in the proposed year, based
 11 on their net-zero type. Then using emissions in 2022, 2030 and the corresponding long-term
 12 target year for CO₂ (Fig. S3), we fit a curve based on an exponential function (Eq. 1) from
 13 ref.¹⁷,

$$14 \quad E_y = E_{asm} + (E_{2022} - E_{asm}) \times e^{g_y} \dots (1)$$

15 where,

16 E_y = CO₂ emissions in year y (from 2023 to 2100)

17 E_{2022} = CO₂ emissions in year 2022 from PRIMAP-Hist

18 E_{asm} = Asymptotic CO₂ emissions at the final target level

19 g_y = Cumulative growth rate $\int_{2023}^y g(t)dt$

20 $g(t)$ = Annual growth rate $g_t = g_{t-1} - \Delta g$

21 Δg = Change in the annual growth rate

22 The values of g_{2022} are obtained from the past trends 2018-2022 while those of E_{asm}
 23 and Δg are obtained by optimizing the function to minimize the misfit from the emissions in
 24 2030. Emissions are assumed to be constant beyond the long-term target year.

1 Our emission pathways are more conservative than those in previous studies because
2 we do not assume further emission reductions beyond the target level (i.e., Constant Emissions
3 approach¹⁸). For countries with a net-zero GHG target, net negative CO₂ emissions can occur
4 to a certain extent to compensate for residual non-CO₂ emissions from hard-to-abate sectors,
5 but no further.

6 Modeling future emissions for LULUCF

8 The modeling for the LULUCF sector starts from 2021 to 2100, as the historical dataset is
9 available up to 2020. LULUCF comprises anthropogenic CO₂ fluxes from three components -
10 i) emissions from deforestation, ii) sinks induced from environmental change over managed
11 land and iii) emissions from forest degradation. For (i) and (ii), we performed a country-level
12 analysis, while (iii) is accounted for at a global level.

13 For top contributors to the net fluxes from i) and ii) combined⁷⁷, we obtain the net fluxes
14 in 2030 either directly from the NDC report when stated explicitly or from the interpretation
15 by ref.⁸¹. For the rest of the countries, the net fluxes from i) and ii) are kept constant at 2020
16 levels from historical datasets. Since LULUCF fluxes reported in NDC or ref.⁸¹ only include i)
17 and ii), we add global emissions for iii) from ref.⁷⁸ as average emissions during 2005-2010.

18 All temperature simulating approaches used here internally calculate total CO₂ uptake
19 over land, including the total sinks over both managed and unmanaged land. In order to avoid
20 double counting of sinks from managed land (Fig. S1), we exclude the sinks from the total
21 emissions to represent only the direct LULUCF fluxes (i.e., emissions from deforestation and
22 degradation). In this regard, the following steps were taken:

- 23 • Step1: ACC2's land uptake parameterization (those representing CO₂ fertilization (beta)
24 and climate-carbon cycle feedback (Q10)) is tuned such that the sum of deforestation
25 emissions from OSCAR and total CO₂ uptake over land from ACC2 is within the levels of

1 net CO₂ flux over land as computed from other several combinations; OSCAR
 2 deforestation plus total sinks from DGVMS (managed and unmanaged); net flux from
 3 NGHGI data (i.e., deforestation emissions and sinks over managed land) plus additional
 4 sinks over unmanaged land based on inversions; total net flux from inversions (Fig. S2).
 5 The values of beta and Q10 were set at 0.6 and 1.2, respectively.

- 6 • Step 2: For the historical period (up to 2020), double counting is avoided by merely
 7 excluding the DGVM sinks over managed land in the emission input, i.e., by considering
 8 only the emissions from deforestation and degradation.
- 9 • Step 3: For the modeled future LULUCF flux (2021-2100), the sink component over
 10 managed land is difficult to disaggregate due to lack of information. Thus, we subtract sinks
 11 assuming a linear decrease in land sinks from 2020 levels (as reported by DGVMS) to zero
 12 in 2100, following the decreasing sinks simulated by many models under low emissions
 13 scenarios^{82,83}, as a representative approximation of future share from sinks over managed
 14 land.

15 We incorporated the impacts from LUF at the global level as shown in Table S1.

16
 17 **Table S1 | Summary of experimental setups for LUF pledges.**

Scenario	For deforestation	For degradation	Reduction level
LUF01	End Gross Forest loss - BAU_deforestation	100% control - BAU_degradation	Maximum
LUF02	End Net Forest loss - BAU_deforestation	50% control - BAU_degradation	Mid-way
LUF03	End Tree Cover loss - BAU_deforestation	10% control - BAU_degradation	Minimum

18
 19 Simulating temperature change

20 To ensure robustness, we estimate future temperature projections using three different
 21 approaches, representing varying levels of complexity in simulating the response of the climate

1 system to changing emissions as described in the order of relatively high to low complexity.
2 We use the third approach as the representative method for temperature projections of
3 enhanced/delayed pledges (Fig. 2), as well as those of current pledges (Fig. 1). The temperature
4 projections of current pledges are compared with those based on the first and second
5 approaches (Fig. 1). The first approach is also used in the analysis of supplementary strategies
6 that explore the potential use of novel CDR and SRM (Fig. 3).

7 In the first approach, temperature responses are simulated using a reduced-complexity
8 climate model ACC2³⁸⁻⁴⁰. The current model was developed from earlier reduced-complexity
9 climate models^{84,85}. The model comprises four modules: carbon cycle, atmospheric chemistry,
10 climate, and economy modules. The economy module enables ACC2 to calculate least-cost
11 pathways^{39,40,86} for a given mitigation target. However, this study uses ACC2 without the
12 economy module to simulate only the climate aspects. The performance of this model was
13 cross-compared with those of other reduced-complexity climate models^{82,87,88}. The model
14 calculates the temperature contributions of various gases and aerosols separately (CO₂, CH₄,
15 N₂O, 29 species of halocarbons, SF₆, tropospheric and stratospheric O₃, stratospheric water
16 vapor, and aerosols (the direct effect of sulfate aerosols, the direct effect of black carbon and
17 organic aerosols, and the indirect effects of all aerosols)) by evaluating the radiative forcing of
18 climate forcers individually (i.e., without any gas aggregation using emission metrics such as
19 GWP100). The physical climate module is an energy balance and heat diffusion model
20 DOECLIM^{38,89}. The atmospheric chemistry module takes into account the OH chemistry to
21 compute CH₄ and tropospheric O₃ concentrations, considering pollutant emissions (NO_x, CO,
22 and VOC). The carbon cycle module is a box model comprising three ocean boxes, a coupled
23 atmosphere-mixed layer box, and four land boxes. With rising atmospheric CO₂ concentrations,
24 the ocean CO₂ uptake can be saturated through changes in the thermodynamic equilibrium of
25 carbonate species, and the land CO₂ uptake can logarithmically increase due to the CO₂

1 fertilization effect (beta parameterization). Climate-carbon cycle feedback is considered using
2 a Q10 parameterization. Equilibrium climate sensitivity is one of the major uncertain
3 parameters that determine global average temperature changes in model calculations, with
4 ranges of 1.5-4.5°C in AR5 and 2.5–4.0°C in AR6 for a doubling of CO₂. Following the best
5 estimate of AR6, we assume a climate sensitivity of 3°C. Other uncertain model parameters
6 are calibrated based on an inversion approach since 1750⁹⁰. The model is written in GAMS and
7 numerically solved using CONOPT3, a nonlinear optimization solver included in the GAMS
8 software package.

9 The second approach involves a less complex method based on IRF, a simple
10 mathematical model, usually in the form of a sum of exponential functions, to represent a time-
11 dependent response of a perturbation in a system. We combine two different IRFs obtained
12 from Section 8.SM.11 of IPCC AR5⁴¹: i) a carbon cycle IRF that calculates atmospheric CO₂
13 concentrations for a given pulse emission of CO₂ and ii) a climate IRF that calculates global-
14 mean temperature changes for a given pulse input of radiative forcing. To calculate
15 temperatures for CO₂ emissions in time series, we use double convolutions for these two IRFs.
16 In the temperature calculations, the CO₂ forcing is linearly related to the CO₂ concentration
17 through the CO₂ radiative efficiency in AR5.

18 There are variations in this calculation method, depending on the way how non-CO₂
19 components are treated (Table S2). In the first case (m1), both CH₄ and N₂O concentrations are
20 calculated based on the respective simple gas cycle models, which were used for computing
21 emission metric values in AR5⁴¹. The additional CH₄ forcing, or so-called indirect effect, such
22 as the production of tropospheric O₃ and stratospheric water vapor is considered as a fixed
23 fraction of the radiative forcing of CH₄ itself (direct effect) computed from the CH₄ gas cycle
24 model. CO₂ production through CH₄ oxidation⁹¹ is not accounted for in AR5 metric values.
25 The CH₄ and N₂O concentrations are converted to CH₄ and N₂O forcings via their respective

1 radiative efficiencies, which become part of the total forcing, the input for temperature
2 calculations. In all other cases (m2 to m6), the contributions of CH₄ and N₂O are not explicitly
3 considered through models but represented as part of the CO₂eq emissions using emission
4 metrics (AR5 metric values, following the Paris Agreement rulebook²⁹). Metric values in
5 AR6⁹² are not used in our analysis despite their higher scientific robustness. The last case (m6)
6 uses the Global Warming Potential Star (GWP*) approach²¹⁻²⁵, a metric, or more precisely a
7 revised way of using metrics, that allows emissions of short-lived climate forcers such as CH₄
8 to be converted to CO₂eq emissions while maintaining temperature impacts as consistent as
9 possible. The GWP* approach requires the use of CH₄ emissions 20 years in the past to quantify
10 the rate of change in CH₄ emissions. Finally, the temperature contributions of gases and
11 pollutants other than CO₂, CH₄ and N₂O ($\Delta T_{other-gases}$) are based on the data for SSP1-1.9
12 (Fig. 6.22 of IPCC AR6 WGI (65)). The temperature change from the IRF+metric approach
13 ($\Delta T^{IRF+metric}$) relative to 1850-1900 levels is obtained from Eq. 2.

$$14 \quad \Delta T^{IRF+metric}_{yr} = (T^{IRF+metric}_{yr} - T^{IRF+metric}_{2019}) + \Delta T^{Obs}_{2019} + \Delta T_{other-gases,yr}$$

$$15 \quad \dots (2)$$

16 where,

17 yr = Years from 2020, up to 2100

18 $T^{IRF+metric}_{yr}$ = Temperature response for yr (relative to 1750) from CO₂, CH₄ and
19 N₂O emissions calculated using IRF in combination of respective metrics as described
20 as cases in Table S2

21 ΔT^{Obs}_{2019} = Temperature change in 2019 (relative to 1850-1900) based on
22 observations (= 1.183°C). It is obtained using the decadal mean temperature change
23 (2013-2022) of 1.15°C (representative of temperature change in 2017-2018) and
24 interpolating to 2020 using a decadal rate of warming of 0.22°C/decade (i.e., 1.15°C
25 + 0.22°C/decade * (1.5/10) = 1.183°C). The values are obtained from ref.⁹⁴.

1 $\Delta T_{other-gases, yr}$ = Temperature change for yr (relative to 1850-1900) from the
 2 emissions of gases and pollutants other than CO₂, CH₄ and N₂O following SSP1-1.9.
 3 This is taken for total aerosols, HFCs and ozone from Fig 6.22 of IPCC AR6 WGI⁹³.

4
 5 **Table S2 | Summary of emission metrics used in the IRF+metric approach.** Note that the values of
 6 GWPs and GTPs are based on IPCC AR5 following the Paris Agreement rulebook²⁹. The GWP100 values
 7 used in the GWP* formulation also uses AR5 values as described in refs.^{23,95}.

Case	Description
m1 : gas by gas	Emissions of CH ₄ and N ₂ O are directly used to calculate their respective concentrations without being converted to CO ₂ eq emissions (i.e., no metric used).
m2: GTP100	Emissions for CH ₄ and N ₂ O are converted to CO ₂ eq emissions using GTP100 (4 and 234, respectively)
m3: GWP100	Emissions for CH ₄ and N ₂ O are converted to CO ₂ eq emissions using GWP100 (28 and 265, respectively)
m4: GTP20	Emissions for CH ₄ and N ₂ O are converted to CO ₂ eq emissions using GTP20 (67 and 277, respectively)
m5: GWP20	Emissions for CH ₄ and N ₂ O are converted to CO ₂ eq emissions using GWP20 (84 and 264, respectively)
m6: GWP*	Emissions for CH ₄ are converted to CO ₂ eq using GWP-star (GWP*) approach for ensuring best temperature equivalency; emissions for N ₂ O are converted to CO ₂ eq using GWP100. Note that we use the notation of CO ₂ eq for simplicity, although a notation of CO ₂ -warming-equivalent has been proposed for GWP*.

8
 9 The third approach is the simplest, involving the use of a linear relation between the peak
 10 temperature change and the cumulative CO₂ emissions in the form of TCRE. It is the ratio of
 11 the global mean temperature change per unit CO₂ emitted. As per AR6, TCRE ranges from
 12 0.27°C to 0.63°C per 1,000 GtCO₂ with the best estimate of 0.45°C per 1,000 GtCO₂³⁴. Using
 13 the best estimate for TCRE, the global mean temperature change is estimated by Eq. 3. We
 14 calculate the temperature change from the 2019 level ΔT_{2019}^{Obs} .

15 ZEC has been known as an additional warming or cooling for certain periods after the
 16 point of zero emissions. However, it was recently shown that the effect of ZEC already occurs

1 from the point of the peak CO₂ emissions (long before the point of net zero CO₂
2 emissions)^{35,96,97}, which may be related to the response of the ocean carbon cycle⁸³. The
3 currently available estimates of ZEC from many models are derived using idealistic scenarios³⁶.
4 The most common indicator of ZEC is ZEC50^{37,98}, the temperature change following zero
5 emissions for 50 years, after an exponential increase of CO₂ concentrations by 1% per year
6 starting from 1850 (i.e., doubling CO₂ concentrations after 70 years)⁹⁹. Although further
7 research is required to better understand how to incorporate the ZEC contribution in transient
8 temperature calculations such as ours, we make an attempt to incorporate ZEC by assuming
9 that its influence will gradually and linearly come into force in the form of ZEC50 from the
10 point of peak GHG emissions (2022, GWP* basis) up to 2100.

11 Regarding the non-CO₂ contribution, we use the GWP* approach (see above) for CH₄
12 emissions and GWP100 for N₂O emissions to calculate the total CO₂eq emissions used as the
13 input for TCRE. We also apply this TCRE+GWP+ZEC method to perform a simple
14 apportionment of the future warming levels at the country level according to modeled CO₂eq
15 emissions for each country (Eq. 4), while we acknowledge that this simple approach does not
16 consider associated nonlinearities^{55,100–102}.

$$17 \quad \Delta T^{TCRE+GWP+ZEC}_{yr} = \Delta T^{Obs}_{2019} + \Delta T_{other-gases, yr} + \sum_{t=2020}^{yr} E_t \times TCRE +$$

$$18 \quad (a_t \times ZEC_{50}) \dots (3)$$

19 where,

20 E_t = CO₂eq emissions with LULUCF (adjusted to remove sinks over managed land;
21 Fig. S1) at year t . CH₄ and N₂O emissions are converted to CO₂eq emissions using
22 GWP* and GWP100, respectively.

23 a_t = a factor linearly increasing from 0 in year of peak GHG emissions (2022, GWP*
24 basis) to 1 in 2100.

1 $ZEC_{50} = -0.079^{\circ}\text{C}$, the mean estimate of ZEC50 from Earth system models (ESMs)
2 and Earth system models of intermediate complexity (EMICs) in IPCC AR6 WGI⁹⁸.

3 4 Exploring supplementary novel CDR and SRM approaches

5 CDR involves removal of CO₂ from the atmosphere, effectively reducing its concentration and
6 its impact on the climate. Besides afforestation and reforestation, as well as all nature-based
7 solutions^{62,63}, other techniques, termed novel CDRs in this study, have been proposed,
8 including BECCS, DACCS, and enhanced weathering⁴⁷, although current levels of
9 implementation are very limited⁴⁶. SRM involves deliberately altering the Earth's albedo
10 (reflectivity) or the amount of sunlight reaching the surface in order to cool the planet. One
11 proposed SRM method is stratospheric aerosol injection, whereby tiny reflective particles are
12 released into the stratosphere to scatter sunlight away from the Earth⁴⁹. Novel CDR and SRM
13 are usually not explicitly considered in national pledges. Thus, our analysis treats novel CDR
14 and SRM separately from national pledges and explores the role of novel CDR and SRM
15 additional to national pledges.

16 We used ACC2 to estimate the minimum levels of such intervention that would be
17 needed to supplement national pledges in order to meet the Paris temperature targets.
18 Temperature limits were imposed in three different ways reflecting possible interpretations of
19 the Paris Agreement temperature target as described in the main text. We estimated the
20 minimum levels of novel CDR (and SRM if novel CDR is insufficient) by optimization based
21 on the following objective function (Eq. 4).

$$22$$
$$23 \text{ Minimize: } \sum_{t=2025}^{2100} w_{CDR} \cdot (CDR_t)^p + w_{SRM} \cdot (SRM_t)^p \dots (4)$$

- 24 • CDR_t denotes the novel CDR levels for year t , estimated in terms of negative CO₂
25 emissions per year (GtC/year in the model calculation). CDR levels are constrained by the

1 maximum annual CDR levels from novel techniques (BECCS, DACCS and enhanced
2 weathering) found in the Paris-compliant AR6 scenarios in the categories of C1, C2, and
3 C3 (for PA3, PA2, and PA1, respectively) and by the maximum rate of change found in the
4 AR6 scenarios in all categories (for all PAs). It is assumed that the novel CDR can start in
5 2029 if required. w_{CDR} is an arbitrary weighting factor for the CDR term ($1/(\text{GtC/year})$)
6 and fixed at 1.

- 7 • SRM_t denotes the SRM levels for year t , estimated in terms of negative radiative forcing
8 (W m^{-2}) with the maximum allowable level of -2 W m^{-2} . Only when the temperature target
9 is infeasible with novel CDR, the SRM option is invoked. This is done through an arbitrary
10 weighting factor for SRM w_{SRM} ($1/(\text{W m}^{-2})$), which is fixed at 50. The value of this
11 weighting factor was chosen such that SRM_t takes values only when the temperature target
12 is not feasible with CDR alone. It is assumed that SRM is allowed to start from 2029 in our
13 model calculations (this is the latest start year required for this analysis).
- 14 • For both CDR and SRM terms, we apply a power of 1.2 as p , an arbitrary coefficient to
15 avoid numerical fluctuations in the estimated CDR and SRM levels. With a power of 1.0,
16 the estimated CDR levels are similar to the default results but with numerical fluctuations
17 (fluctuations cannot be penalized with a power of 1.0). With a power of 1.5, while the
18 estimated CDR levels also do not have fluctuations, the CDR profile becomes flatter
19 because the squared power penalizes changes in the intervention levels over time.

21 Comparison with other studies

22 Compared to the Meinshausen study⁸ (thereafter, M22), our NDC cut-off date is two years later.
23 Second, ACC2 tends to give a stronger warming than the model of M22⁸² due to parameter and
24 structural differences (despite a climate sensitivity of approximately 3°C in both studies). Third,
25 while we do not assume further mitigation without a deeper target, post-net-zero emission

1 pathways of M22 can decline further, which is driven by, in our understanding, IAMs
2 indicating deep negative CO₂ emissions. Fourth, SSP1-1.9 has lower SO₂ emissions than those
3 in SSP5 (M22). Fifth, our LULUCF emissions are higher due to i) higher deforestation
4 emissions from OSCAR compared to the NGHGI database (M22) and ii) inclusion of forest
5 degradation emissions (Fig. S1).

6 The latest Emissions GAP report¹ (thereafter, U23) includes the near-term
7 unconditional pledges reported till 25 September 2023 and conditional pledges reported till
8 November 2022. Second, compared to this study, U23 projects a higher emissions pathway for
9 the unconditional pledges including net-zero targets because of its underlying strict criteria for
10 selecting net-zero pledges based on ref.³. This leads to a lesser number of countries (seven)
11 meeting their net-zero as compared to this study, wherein all countries with a long-term target
12 are assumed to achieve their respective net-zero emissions. Therefore, the end-of-century
13 temperature rise for unconditional plus net-zero pledges from U23 is higher than this study.
14 Third, for countries without any long-term target, we do not assume any further reduction
15 beyond 2030 levels, but U23 projections assume a continuation of efforts at a similar level of
16 ambition based on carbon prices computed through five IAMs. Fourth, temperature projections
17 are simulated using the Finite Amplitude Impulse Response (FaIR) reduced complexity climate
18 model.

1 Method References

- 2 72. Gütschow, J. & Pflüger, M. The PRIMAP-hist national historical emissions time series (1750-
3 2022) v2.5. Zenodo <https://doi.org/10.5281/zenodo.10006301> (2023).
- 4 73. Gütschow, J. *et al.* The PRIMAP-hist national historical emissions time series. *Earth Syst. Sci.*
5 *Data* **8**, 571–603 (2016).
- 6 74. European Commission, JRC. EDGAR (Emissions Database for Global Atmospheric Research)
7 Community GHG Database, a collaboration between the European Commission, Joint Research
8 Centre (JRC), the International Energy Agency (IEA), and comprising IEA-EDGAR CO₂,
9 EDGAR CH₄, EDGAR N₂O, EDGAR F-GASES version 8.0. (2023).
- 10 75. Gasser, T. *et al.* Historical CO₂ emissions from land use and land cover change and their
11 uncertainty. *Biogeosciences* **17**, 4075–4101 (2020).
- 12 76. Friedlingstein, P. *et al.* Global Carbon Budget 2022. *Earth Syst. Sci. Data* **14**, 4811–4900 (2022).
- 13 77. Grassi, G. *et al.* Harmonising the land-use flux estimates of global models and national inventories
14 for 2000–2020. *Earth Syst. Sci. Data* **15**, 1093–1114 (2023).
- 15 78. Pearson, T. R. H., Brown, S., Murray, L. & Sidman, G. Greenhouse gas emissions from tropical
16 forest degradation: an underestimated source. *Carbon Balance Manag.* **12**, 3 (2017).
- 17 79. ICAO. Long term global aspirational goal (LTAG) for international aviation.
18 <https://www.icao.int/environmental-protection/Pages/LTAG.aspx> (2023).
- 19 80. IMO. 2023 IMO Strategy on Reduction of GHG Emissions from Ships.
20 [https://www.imo.org/en/OurWork/Environment/Pages/2023-IMO-Strategy-on-Reduction-of-](https://www.imo.org/en/OurWork/Environment/Pages/2023-IMO-Strategy-on-Reduction-of-GHG-Emissions-from-Ships.aspx)
21 [GHG-Emissions-from-Ships.aspx](https://www.imo.org/en/OurWork/Environment/Pages/2023-IMO-Strategy-on-Reduction-of-GHG-Emissions-from-Ships.aspx) (2023).
- 22 81. Fyson, C. L. & Jeffery, M. L. Ambiguity in the Land Use Component of Mitigation Contributions
23 Toward the Paris Agreement Goals. *Earths Future* **7**, 873–891 (2019).
- 24 82. Melnikova, I., Ciais, P., Boucher, O. & Tanaka, K. Assessing carbon cycle projections from
25 complex and simple models under SSP scenarios. *Clim. Change* **176**, 168 (2023).
- 26 83. Melnikova, I. *et al.* Carbon Cycle Response to Temperature Overshoot Beyond 2°C: An Analysis
27 of CMIP6 Models. *Earths Future* **9**, e2020EF001967 (2021).
- 28 84. Hooss, G., Voss, R., Hasselmann, K., Maier-Reimer, E. & Joos, F. A nonlinear impulse response
29 model of the coupled carbon cycle-climate system (NICCS). *Clim. Dyn.* **18**, 189–202 (2001).
- 30 85. Bruckner, T., Hooss, G., Füssel, H.-M. & Hasselmann, K. Climate System Modeling in the
31 Framework of the Tolerable Windows Approach: The ICLIPS Climate Model. *Clim. Change* **56**,
32 119–137 (2003).
- 33 86. Tanaka, K., Johansson, D. J. A., O’Neill, B. C. & Fuglestedt, J. S. Emission metrics under the
34 2 °C climate stabilization target. *Clim. Change* **117**, 933–941 (2013).
- 35 87. Joos, F. *et al.* Carbon dioxide and climate impulse response functions for the computation of
36 greenhouse gas metrics: a multi-model analysis. *Atmospheric Chem. Phys.* **13**, 2793–2825 (2013).

- 1 88. Nicholls, Z. R. J. *et al.* Reduced Complexity Model Intercomparison Project Phase 1: introduction
2 and evaluation of global-mean temperature response. *Geosci. Model Dev.* **13**, 5175–5190 (2020).
- 3 89. Kriegler, E. Imprecise probability analysis for integrated assessment of climate change.
4 (Universität Potsdam, 2005).
- 5 90. Tanaka, K., Raddatz, T., O’Neill, B. C. & Reick, C. H. Insufficient forcing uncertainty
6 underestimates the risk of high climate sensitivity. *Geophys. Res. Lett.* **36**, 2009GL039642 (2009).
- 7 91. Boucher, O., Friedlingstein, P., Collins, B. & Shine, K. P. The indirect global warming potential
8 and global temperature change potential due to methane oxidation. *Environ. Res. Lett.* **4**, 044007
9 (2009).
- 10 92. Forster, P. *et al.* The Earth’s Energy Budget, Climate Feedbacks, and Climate Sensitivity. in
11 *Climate Change 2021: The Physical Science Basis. Contribution of Working Group I to the Sixth*
12 *Assessment Report of the Intergovernmental Panel on Climate Change* (2021).
- 13 93. Szopa, S. *et al.* Short-Lived Climate Forcers. in *Climate Change 2021: The Physical Science*
14 *Basis. Contribution of Working Group I to the Sixth Assessment Report of the Intergovernmental*
15 *Panel on Climate Change* (2021).
- 16 94. Forster, P. M. *et al.* Indicators of Global Climate Change 2022: annual update of large-scale
17 indicators of the state of the climate system and human influence. *Earth Syst. Sci. Data* **15**, 2295–
18 2327 (2023).
- 19 95. FAO. *Methane Emissions in Livestock and Rice Systems: Sources, Quantification, Mitigation and*
20 *Metrics.* (2023).
- 21 96. Palazzo Corner, S. *et al.* The Zero Emissions Commitment and climate stabilization. *Front. Sci.*
22 **1**, (2023).
- 23 97. Matthews, H. D. How much additional global warming should we expect from past CO₂
24 emissions? *Front. Sci.* **1**, (2023).
- 25 98. Lee, J.-Y. *et al.* Future Global Climate: Scenario-Based Projections and Near-Term Information.
26 in *Climate Change 2021: The Physical Science Basis. Contribution of Working Group I to the*
27 *Sixth Assessment Report of the Intergovernmental Panel on Climate Change* (2021).
- 28 99. Eyring, V. *et al.* Overview of the Coupled Model Intercomparison Project Phase 6 (CMIP6)
29 experimental design and organization. *Geosci. Model Dev.* **9**, 1937–1958 (2016).
- 30 100. Boucher, O., Borella, A., Gasser, T. & Hauglustaine, D. On the contribution of global aviation to
31 the CO₂ radiative forcing of climate. *Atmos. Environ.* **267**, 118762 (2021).
- 32 101. Fu, B. *et al.* The contributions of individual countries and regions to the global radiative forcing.
33 *Proc. Natl. Acad. Sci.* **118**, e2018211118 (2021).
- 34 102. Trudinger, C. & Enting, I. Comparison of formalisms for attributing responsibility for climate
35 change: Non-linearities in the Brazilian Proposal approach. *Clim. Change* **68**, 67–99 (2005).

Supplementary Files

This is a list of supplementary files associated with this preprint. Click to download.

- [Tibrewal2024NatureSIsubmitted.pdf](#)