



**HAL**  
open science

## Raman Analysis of ice-gas co-deposits generated from mass spectrometry calibrated vapor mixtures

Adriana Oancea, Cristian Focsa, Benjamin Hanoune, Bertrand Chazallon

► **To cite this version:**

Adriana Oancea, Cristian Focsa, Benjamin Hanoune, Bertrand Chazallon. Raman Analysis of ice-gas co-deposits generated from mass spectrometry calibrated vapor mixtures. European Geosciences Union General Assembly, Apr 2007, Vienne, Austria. . hal-04429158

**HAL Id: hal-04429158**

**<https://hal.science/hal-04429158v1>**

Submitted on 31 Jan 2024

**HAL** is a multi-disciplinary open access archive for the deposit and dissemination of scientific research documents, whether they are published or not. The documents may come from teaching and research institutions in France or abroad, or from public or private research centers.

L'archive ouverte pluridisciplinaire **HAL**, est destinée au dépôt et à la diffusion de documents scientifiques de niveau recherche, publiés ou non, émanant des établissements d'enseignement et de recherche français ou étrangers, des laboratoires publics ou privés.

A. Oancea (1), C. Focsa (1), B. Hanoune (2), B. Chazallon (1)

(1) Laboratoire de Physique des Lasers, Atomes et Molécules (PhLAM), Université Lille 1, UMR 8523, Bât P5, Cerla FR-CNRS 2416, 59655 Villeneuve d'Ascq, France (chazallon@phlam.univ-lille1.fr),

(2) Laboratoire de Physico-chimie des processus de combustion et de l'Atmosphère, Université Lille 1, 59655 Villeneuve d'Ascq, France,

## INTRODUCTION

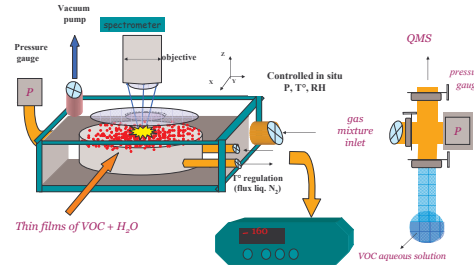
- Light volatile organic compounds (methanol, ethanol, formaldehyde) are intermediate products in the oxidation of atmospheric hydrocarbons. They are closely linked to the production of HOx, the main atmospheric oxidant. These trace gases interact with water and may affect the chemistry of the troposphere. Recent studies in polar regions showed that the concentration of several VOCs (HCHO, C<sub>2</sub>H<sub>6</sub>O etc) in the lower troposphere is higher than expected from model calculations. It is suggested that the source of these species is related to snowpack chemistry Hutterli et al., GRL, 1999, Dominé & Shepson, Science, 2002. Further, large missing source of formaldehyde have been reported in the upper troposphere. This has been tentatively explained by the heterogeneous oxidation of methanol on the ice surfaces Jaeglé et al., JGR 2002.
- A characterization of the condensed phase of the ice-gas system is therefore necessary, more particularly of the equilibrium solubilities of gaseous species in ice. Indeed, the incorporation of dopants may induce changes in the ice structure that can lead to the ice amorphization, or to the formation of a hydrate crystal or a solid solution.

### Previous work:

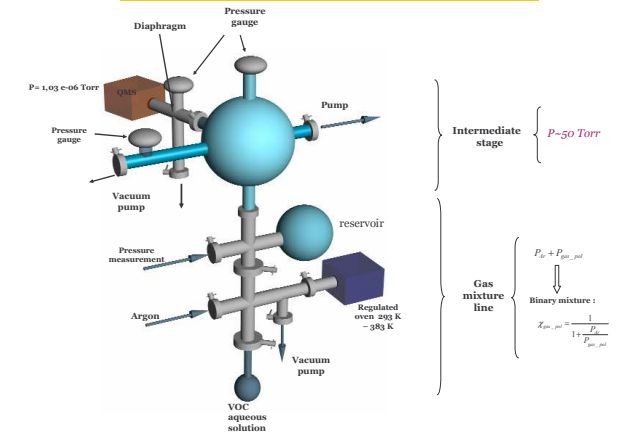
- Vapor deposited formaldehyde-ice mixtures investigated *in-situ* by micro-Raman spectroscopy Chazallon et al., PCCP, 2007 (submitted)
- Vapor deposited ethanol-H<sub>2</sub>O ice mixtures investigated by micro-Raman scattering Chazallon et al., VibSpec, 42, 206, 2006
- Micro-Raman investigation of the formaldehyde-ice system, Chazallon et al., J. Phys. Chem. B, 109, 432, 2005
- Raman characterization of the relative abundance of oligomers in the aqueous solutions, Lebrun et al., J. Raman Spectrosc., 34, 459, 2003
- IR laser resonant desorption of formaldehyde-H<sub>2</sub>O ices: hydrated cluster formation and velocity distribution Mihesan et al. Surf. Sci., 566-568, 650, 2004, Ziskind et al. Appl. Phys. A, 79, 991, 2004

## RESULTS

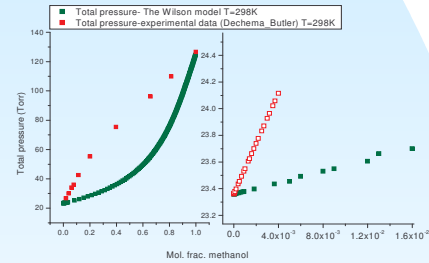
### Raman experimental set-up



### Mass spectrometry experimental set-up

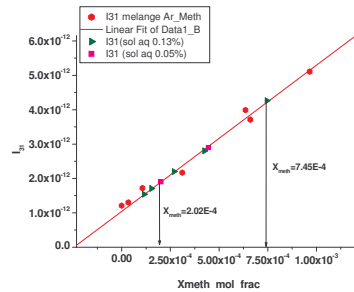


### VLE equilibrium data of VOC aqueous solutions (H<sub>2</sub>CO, CH<sub>4</sub>O)



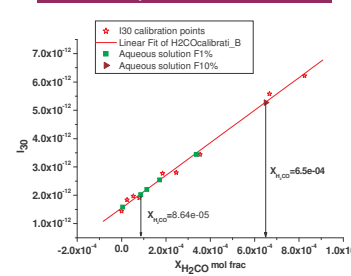
- Isothermal vapor-liquid equilibrium total pressure as a function of methanol water concentration.
- Aqueous solution of methanol are prepared and the gas phase collected above the solution at equilibrium is analyzed by mass spectrometry.
- Using a calibration curve made with binary mixture of pure methanol and argon what a calculated molar fraction we want to verify the concentration of methanol in the gas phase predicted by Wilson model

### Methanol calibration curve



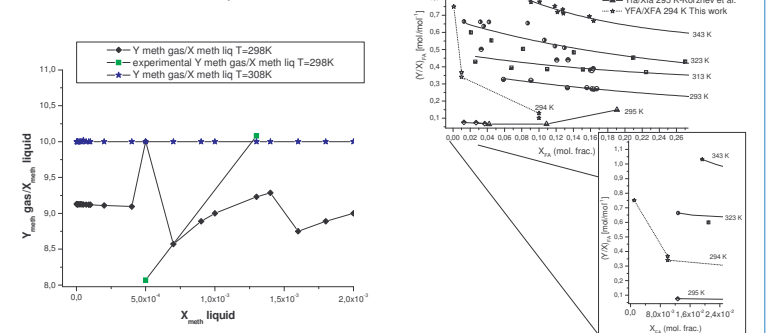
- With the partial pressure ratio, we can deduce the molar fraction  $Y_{VOC}$  in the binary gas mixture as analyzed by the mass spectrometer.
- The vapors collected above the solution are diluted until we are in the wanted molar concentration region. Using the calibration curve we find an experimental value for the molar fraction introduced in the mass spectrometer.
- By doing the backward mathematical calculation we find an experimental value for the methanol (formaldehyde) molar fraction in the gas phase above the aqueous solution.

### Formaldehyde calibration curve

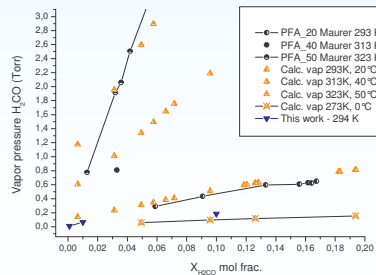


### Partition coefficients

#### Partition coefficients of Methanol/formaldehyde in the Methanol/formaldehyde-water system at different temperatures

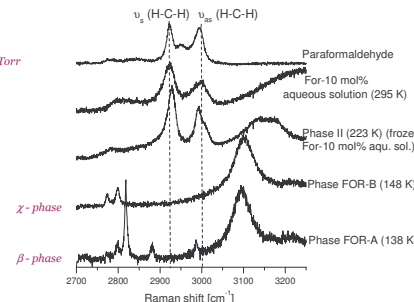


### Vapor liquid equilibrium data of H<sub>2</sub>O-H<sub>2</sub>CO aqueous solutions



- Equilibrium vapor pressure of formaldehyde over formaldehyde aqueous solutions as a function of dissolved H<sub>2</sub>CO concentration.
- A comparison with predicted values is shown, using  $\log P_{H_2CO} = 9.942 - 0.953 (0.488)^{W/10} - 2905/T$
- Our data were determined by mass spectrometry / IR absorption  $W = wt\%$  of dissolved H<sub>2</sub>CO,  $P$  in mm,  $T$  in K,  $L_{aq}$ , Electrochemicals Dept. E.L.Inc., unpublished results

### Raman spectra of different formaldehyde-based compounds

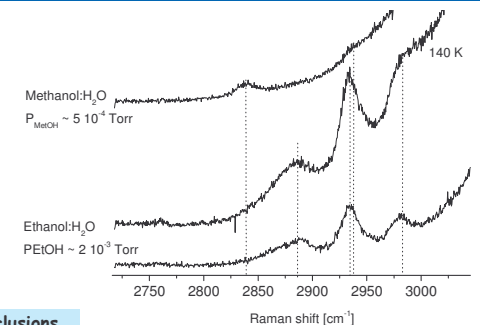


Deposition @  $P_{HCHO} \sim 1.2 \cdot 10^{-3}$  Torr

$\chi$ -phase  
 $\beta$ -phase

- Comparison between Raman spectra of different formaldehyde-based compounds (see legend). The position (and attribution) of the vertical dotted lines indicate the symmetric  $\nu_s$  and anti-symmetric  $\nu_{as}$  modes of C-H stretching observed in the liquid aqueous solution. Note the striking spectral differences of hydrates crystallized in frozen solution (composed of hydrated oligomers) and hydrates formed by deposition of vapor collected above the solution ( $\chi$  and subsequent annealing (composed of molecular H<sub>2</sub>CO).

### Raman spectra of co-deposited Methanol:H<sub>2</sub>O mixture and ethanol:H<sub>2</sub>O mixture



### Conclusions

- Strong partitioning between liquid and gas phase at low concentration  $\rightarrow$  need more experimental data to confirm
- Characterization of co-deposited hydrates of formaldehyde/methanol/ethanol phases underway