



**HAL**  
open science

# Calabi-Yau metrics on rank two symmetric spaces with horospherical tangent cone at infinity

Tran-Trung Nghiem

► **To cite this version:**

Tran-Trung Nghiem. Calabi-Yau metrics on rank two symmetric spaces with horospherical tangent cone at infinity. 2024. hal-04428381

**HAL Id: hal-04428381**

**<https://hal.science/hal-04428381>**

Preprint submitted on 31 Jan 2024

**HAL** is a multi-disciplinary open access archive for the deposit and dissemination of scientific research documents, whether they are published or not. The documents may come from teaching and research institutions in France or abroad, or from public or private research centers.

L'archive ouverte pluridisciplinaire **HAL**, est destinée au dépôt et à la diffusion de documents scientifiques de niveau recherche, publiés ou non, émanant des établissements d'enseignement et de recherche français ou étrangers, des laboratoires publics ou privés.

# CALABI-YAU METRICS ON RANK TWO SYMMETRIC SPACES WITH HOROSPHERICAL TANGENT CONE AT INFINITY

TRAN-TRUNG NGHIEM

ABSTRACT. We show that on every non- $G_2$  complex symmetric space of rank two there are complete Calabi-Yau metrics of Euclidean volume growth with prescribed horospherical singular tangent cone at infinity, providing the first examples of affine Calabi-Yau smoothings of singular and irregular tangent cone. As a corollary, we obtain infinitely many examples of Calabi-Yau manifolds degenerating to the tangent cone in a single step, supporting a recent conjecture by Sun-Zhang, which was only proved for asymptotically conical Calabi-Yau manifolds in the sense of Conlon-Hein.

## 1. INTRODUCTION

1.1. **Background.** Let  $(M, g)$  be a complete Ricci-flat Riemannian manifold of dimension  $d$  such that there is  $\kappa > 0$  satisfying

$$\text{vol}(B_r(p)) \geq \kappa r^d$$

for any ball  $B_r(p)$  of radius  $r > 0$  centered at  $p$ . Under this volume condition, we say that  $(M, g)$  has *Euclidean* (or *maximal*) *volume growth*. By Gromov's compactness theorem, any rescaled sequence  $(M_i, g_i, p_i) = (M, \lambda_i^{-1}g, p)$  for  $\lambda_i \rightarrow +\infty$  admits a subsequence converging in the pointed Gromov-Hausdorff sense to a complete length space  $C$ , called a *tangent cone at infinity* of  $(M, g)$ , which might a priori depend on the subsequence, but not on the base point  $p$ . An important result due to Cheeger-Colding [CC97, CC00] asserts that under the maximal volume growth, any tangent cone  $C$  is in fact a *metric cone*, that is, the metric completion of  $]0, +\infty[ \times Y$ , where  $Y$  is some compact metric space called the *link* of  $C$ . If one tangent cone has smooth link, then by Colding-Minicozzi [CM14],  $C$  is in fact independent of the subsequence.

If  $(M, g, J)$  is Ricci-flat Kähler and has maximal volume growth, then the tangent cone at infinity has a complex *affine cone* structure  $(C, J_0)$ , and the singular set of  $C$  is the same as the algebraic singular set by Donaldson-Sun [DS17], which is of real codimension  $\geq 4$  [CCT02]. As remarked by Székelyhidi [Szé20], if the metric on  $M$  is  $\partial\bar{\partial}$ -exact, then [DS17] can be applied to show that the cone is independent of the scaling subsequence. From the algebro-geometric aspect, we can also view  $C$  as a *Fano cone singularity*, that is an affine algebraic variety with klt singularities and a unique fixed point under the effective action of some torus  $T_0 \simeq (\mathbb{C}^*)^k$ , such that every orbit closure contains the fixed point [LWX21]. The set of *Reeb vectors* or *polarizations* of  $C$  is the set of elements  $\xi$  in the compact Lie algebra of  $T_0$  such that  $\xi$  acts on the coordinate ring of  $C$  with non-negative weights (that vanish only on constants).

On the regular set of  $C$ , the sequence of Ricci-flat Kähler metrics  $(M, \lambda_i^{-1}g, J_i)$  converges in the smooth pointed Cheeger-Gromov sense to a Ricci-flat Kähler metric  $(C, g_0, J_0)$  [CCT02], and  $g_0$  actually arises from a (weak) *Sasaki-Einstein metric*  $g_Y$

---

2020 *Mathematics Subject Classification.* 53C25, 53C55, 32Q25, 14M27.

*Key words and phrases.* Calabi-Yau metrics, symmetric spaces, horospherical tangent cone at infinity, irregular and singular tangent cone at infinity, asymptotically conical.

from the link  $Y$ , hence is a *conical Calabi-Yau metric*, or *Ricci-flat Kähler cone metric*. To be precise, there is a vector  $\xi$ , called the *K-stable Reeb vector* or *K-stable polarization*, such that  $-J_0\xi$  is a homothetic scaling on  $C$  and

$$\mathcal{L}_{-J_0\xi}\omega_0 = 2\omega_0.$$

In particular, the metric form of  $g_0$  can be written as a Kähler current as  $\omega_0 = \frac{1}{2}dd^c r_0^2$ , where  $r_0$  is the distance to the vertex and also the coordinate on  $]0, +\infty[$  such that  $(C, g_0)$  is the metric completion of the warped product  $(]0, +\infty[ \times Y, dr_0^2 + r_0^2 g_Y)$ . The Reeb element  $\xi$  is said to be *quasiregular* if it generates an  $\mathbb{S}^1$ -action on the link (and *regular* if this action is free), and *irregular* otherwise.

1.1.1. *Asymptotically conical Calabi-Yau manifolds.* If one tangent cone at infinity satisfies an integrability condition [CT94, Definition 0.11], then the cone has smooth link (we simply say that the cone is *smooth* in this case), and  $(M, g)$  is in fact an *asymptotically conical (AC) Ricci-flat Kähler manifold* in the terminology of [CH13]. This means that there are compact subsets  $K, K', \lambda > 0$  and a diffeomorphism

$$\Phi : M \setminus K \rightarrow C \setminus K'$$

such that

$$\left| \nabla_{g_0}^k (\Phi^* g - g_0) \right| = O(r_0^{-\lambda-k}), \quad \forall k > 0.$$

If the volume form  $\Omega$  of an AC Ricci-flat Kähler manifold  $(M, g, J)$  also converges to the canonical volume form  $\Omega_0$  of  $C$  via  $\Phi$ , i.e. there is some  $\mu > 0$  such that

$$|\Phi^* \Omega - \Omega_0|_{g_0} = O(r_0^{-\mu}),$$

then  $(M, g, J)$  is said to be an *AC Calabi-Yau manifold*. This condition already implies  $C^0$ -convergence of the complex structure  $J$  to  $J_0$  via  $\Phi$  [CH13]. Moreover, if  $(M, g, J)$  is AC Ricci-flat Kähler but not simply connected then passing to the universal cover yields an AC Calabi-Yau manifold [CH22].

The existence, uniqueness and classification of AC Calabi-Yau manifolds have now been relatively well understood thanks to the works of Conlon-Hein [CH13], [CH15], [CH22]. Initially inspired by van Coevering's papers [vC08, vC10, vC11], they went on to optimize an earlier theorem in the important works of Tian-Yau [TY90, TY91], culminating in the classification of asymptotically conical manifolds. We can summarize the optimal Tian-Yau theorem due to Conlon-Hein as follows.

**Theorem 1.1.** [TY91, CH15] *Let  $X^n$  be a compact Kähler orbifold without  $\mathbb{C}$ -codimension-1 singularities. Let  $D \supset \text{Sing}(X)$  be a suborbifold divisor in  $X$  such that  $-pK_X = qD, p, q \in \mathbb{N}, q/p > 1$ , and such that  $D$  admits a Kähler-Einstein metric of positive scalar curvature.*

*For every Kähler class  $\mathfrak{k}$  on  $X \setminus D$  and for every  $t > 0$ , there is a unique Calabi-Yau metric  $\omega_t \in \mathfrak{k}$  which is asymptotically conical to the metric  $t\omega_0$ , where  $\omega_0$  is built on the Calabi ansatz Ricci-flat Kähler cone metric of  $pK_D$ .*

The *Calabi ansatz* for manifolds can be outlined as follows: If  $D^{n-1}$  is a Fano Kähler-Einstein manifold, then the radius function of the conical Calabi-Yau metric on  $K_D^\times$  is given by  $r^2 = \|\cdot\|_n^{\frac{2}{n}}$ , where  $\|\cdot\|$  is a Hermitian norm on  $K_D^\times$  naturally obtained from the Kähler-Einstein metric on  $D$ . A similar construction works for  $(\frac{1}{k}K_D)^\times$  as well as for orbifolds [CH15].

As remarked in [CH15, Section 3], the following *generalized* or *irregular* Tian-Yau problem was first proposed by van Coevering [vC08] but with an incorrect proof, hence has not been solved in the literature.

Type	Representative	Root system	Multiplicities	Satake diagram	Hermitian
$BDII$	$SO_{r+2}/SO_1 \times SO_{r+1}$	$A_1$	$r, r \geq 1$	 if $r$ even, else	$r = 1$
$AIII$	$SL_{r+1}/SL_1 \times SL_{r+1}$	$BC_1$	$(2r - 3, 1), r \geq 2$		yes
$CII$	$Sp_{2r}/Sp_2 \times Sp_{2r-2}$	$BC_1$	$(4r - 8, 3), r \geq 3$		no
$FII$	$F_4/B_4$	$BC_1$	$(8, 7)$		no

TABLE 1. Symmetric spaces of rank one.

**Problem 1.2.** *Produce AC Calabi-Yau metrics on  $X \setminus D$  for pairs  $(X, D)$  as in Theorem 1.1, where  $D$  is not Kähler-Einstein, yet the  $S^1$ -bundle over  $D$  admits an irregular Sasaki-Einstein structure inducing the CR structure (in particular  $(-N_D)^\times$  is conical Calabi-Yau), and  $(X, D)$  is not a blow-up of  $(-N_D)^\times$ .*

In [CH15, Theorem C], the authors solved Problem 1.2 for the smooth pair  $(X, D) \simeq (\text{Bl}_p \mathbb{P}^3, \text{Bl}_{p_1, p_2} \mathbb{P}^2)$ , producing the only known example of Calabi-Yau metrics of Euclidean volume growth with irregular asymptotic cone in the literature. To the author's knowledge, there has not been any counterexample to this problem.

1.1.2. *Calabi-Yau manifolds with Euclidean volume growth and singular tangent cones.* The AC condition turns out to be very restrictive, as there have been existence results of Calabi-Yau metrics of Euclidean volume growth over  $\mathbb{C}^n$ ,  $n \geq 3$  with singular tangent cones at infinity [Li19], [Szé19], [CR21].

The general strategy consists of viewing  $\mathbb{C}^n$  as an affine smoothing of the potential tangent cone at infinity, then building a smooth asymptotic solution of the Ricci-flat equation from a suitably chosen conical Calabi-Yau metric. Since this model is only smooth on the regular set of the cone, one needs to glue it with a model metric near singularities to get a globally smooth asymptotic solution over  $\mathbb{C}^n$  with good geometry. After improving the Ricci potential decay rate, known existence theorems of Tian-Yau-Hein [Hei10] [TY90] [TY91] then allow one to solve the Monge-Ampère equation with the given asymptotic geometry as in the compact case to get a genuine Calabi-Yau metric.

1.1.3. *Known results on symmetric spaces.* The geometric objects of interest to us will be *complex symmetric spaces*. They are Stein complexifications of compact Riemannian symmetric spaces, and can be viewed as their (co)tangent bundles with a suitable complex structure. Our general setting consists of a non-identical involution  $\theta$  on a complex linear semisimple connected group  $G$  with maximal compact subgroup  $K$ , and a rank- $k$  complex symmetric space  $G/H$  of dimension  $n$ , where  $G^\theta \subset H \subset N_G(G^\theta)$ . When  $H$  is not semisimple and  $G/H$  is indecomposable, we actually have  $\dim Z(H) = 1$ , and  $G/H$  is said to be *Hermitian*.

If  $k = 1$ , then there are only finitely many families of complex symmetric spaces up to isomorphisms. They are exactly the cotangent bundles of the sphere, the complex and quaternionic projective spaces, and the Cayley projective plane, cf. Table 1.

The  $K$ -invariant  $\partial\bar{\partial}$ -exact complete Calabi-Yau metrics on complex symmetric spaces of rank 1 were constructed by Stenzel after translating the complex Monge-Ampère equation to a one-variable ODE, which can be explicitly solved [Ste93].

**Theorem 1.3.** [Ste93] *Every complex symmetric space  $G/H$  of rank 1 admits a complete  $K$ -invariant  $\partial\bar{\partial}$ -exact Calabi-Yau metric.*

In fact, we have a more geometric description of the  $K$ -invariant  $\partial\bar{\partial}$ -exact Calabi-Yau metrics with maximal volume growth on rank one symmetric spaces, which

should be well-known by experts, but we still include the proof as a prelude and motivation for the rank-two part.

We offer an approach using the theory of equivariant degeneration for spherical varieties [BP87]. While existence and uniqueness for Stenzel metrics are contained in [CH15] (and in fact a similar result holds for every Kähler class), our strategy has the advantage of yielding immediately the potential tangent cone and some of its geometric properties, which might not be clear a priori, e.g. the spherical action, smoothness of the link and the K-stable Reeb vector. The reader will find more details in Subsection 2.4.

**Theorem 1.4.** *Every rank one symmetric space  $G/H$  admits a complete  $K$ -invariant  $\partial\bar{\partial}$ -exact Calabi-Yau metric which is asymptotically conical to a regular and smooth horospherical cone, obtained as an equivariant degeneration of the symmetric space.*

*Moreover, the metric is unique in the trivial Kähler class up to scaling, and the tangent cone is unique given the metric.*

In other words, any rank one symmetric space is an affine smoothing of its horospherical tangent cone. This is consistent with Conlon-Hein's classification result in [CH22, Theorem A] which shows that AC Calabi-Yau manifolds can only arise as deformations of the asymptotic cone (e.g. affine smoothing), possibly followed by a crepant resolution.

By the works of Bielawski and later improvements by Koike, it is now known that there is a Calabi-Yau structure on any complex symmetric space [Bie04] [Koi23]. Note that the result in [Koi23, Theorem A] is stated for rank two symmetric spaces, but the proof can easily be extended verbatim to any rank. However, this existence theorem is not very geometrically enlightening, and a more meaningful reformulation of the problem can be stated as follows.

**Problem 1.5.** *Given a complex symmetric space  $G/H$  and a prescribed  $G$ -spherical (possibly singular) Calabi-Yau cone  $C$ , obtained as a  $G$ -equivariant degeneration of  $G/H$ , find complete  $K$ -invariant Calabi-Yau metrics of Euclidean volume growth with  $C$  as the tangent cone at infinity.*

**Remark 1.6.** *The choice of  $C$  is a priori reasonable, since the tangent cone at infinity of a complete  $\partial\bar{\partial}$ -exact Calabi-Yau metric with Euclidean volume growth on a complex manifold is in fact the central fiber of a  $\mathbb{C}^*$ -degeneration in (at most) two steps [Szé20] [DS17].*

On complex Hermitian symmetric spaces, Biquard-Gauduchon obtained explicit hyperKähler metrics with singular tangent cones [BG97]. Motivated by these examples, Biquard-Delcroix constructed Calabi-Yau metrics with singular tangent cones by viewing the space as open subset inside a two-divisors compactification, then gluing the Calabi ansatz (referred to as the Tian-Yau ansatz therein) on one K-stable Fano boundary divisor (if any) with a specific ansatz on the other boundary divisor [BD19]. Let us make a remark before recalling their main result.

In [BD19], the authors work with wonderful compactification which only exists for symmetric spaces satisfying some condition on the isotropy group such as  $H = N_G(G^\theta)$ . However, since  $G/H \rightarrow G/N_G(G^\theta)$  is a finite covering, one can in fact suppose that  $H = N_G(G^\theta)$ , then construct Calabi-Yau metrics which can be pulled back to the original symmetric space.

**Theorem 1.7.** *[BD19] Let  $G/H$  be a rank two symmetric space with  $H = N_G(G^\theta)$ . Let  $X$  be the wonderful compactification of  $G/H$  so that  $X \setminus G/H$  is a smooth simple*

normal crossing divisor with irreducible components  $D_1, D_2$ . Let  $A_1, A_2 > 0$  be as defined in Subsection 2.1, and

$$C(D_1^\vee), C(D_2^\vee) = \left(\frac{1}{A_1}K_{D_1^\vee}\right)^\times, \left(\frac{1}{A_2}K_{D_2^\vee}\right)^\times$$

be the Fano cone singularities over the equivariant blowdowns  $D_1^\vee, D_2^\vee$  along the closed orbits  $D_1 \cap D_2$  of  $D_1, D_2$ . Then both cones have a regular conical Calabi-Yau structure (equivalently, both  $D_1^\vee, D_2^\vee$  are Fano Kähler-Einstein), except in the  $G_2$  cases, where only one cone is Calabi-Yau.

Moreover, there is a complete  $K$ -invariant  $\partial\bar{\partial}$ -exact Calabi-Yau metric of Euclidean volume growth and

- with singular tangent cone at infinity  $C(D_1^\vee)$  or  $C(D_2^\vee)$  on the non-Hermitian symmetric spaces

$$\mathrm{SO}_5 \times \mathrm{SO}_5 / \mathrm{SO}_5, \quad \mathrm{Sp}_8 / \mathrm{Sp}_4 \times \mathrm{Sp}_4, \quad G_2 / \mathrm{SO}_4, \quad G_2 \times G_2 / G_2,$$

provided that  $C(D_i^\vee), i = 1, 2$  is Calabi-Yau;

- with singular tangent cone at infinity  $C(D_1^\vee)$  or  $C(D_2^\vee)$  on each Hermitian symmetric space. More precisely, there is one choice of the tangent cone that recovers the Biquard-Gauduchon metrics, while the other choice yields a different metric on

$$\mathrm{SO}_r / \mathrm{SO}_2 \times \mathrm{SO}_{r-2}, r \geq 5, \quad \mathrm{SL}_5 / \mathrm{SL}_2 \times \mathrm{SL}_3.$$

Although this partially answers Problem 1.5 for rank two symmetric spaces with prescribed horosymmetric tangent cones, one main drawback of their ansatz is that the metrics obtained have unbounded holomorphic bisectional curvature in some cases, notably the simplest class of (restricted) root system  $A_2$ , as well as the infinite family  $\mathrm{Sp}_{2r} / \mathrm{Sp}_2 \times \mathrm{Sp}_{2r-2}, r \geq 5$  of non-Hermitian symmetric spaces with root system  $BC_2$ . The unbounded curvature prevents the application of any known a priori estimate methods.

**1.2. Main result.** The issues in [BD19] can be remedied by using the conical Calabi-Yau metric from a degeneration of  $G/H$  induced by a valuation *in the interior* of the Weyl chamber. The theory of equivariant degeneration of spherical varieties [BP87, Corollaire 3.8] tells us that any such direction defines an equivariant degeneration of  $G/H$  to a *horospherical cone*  $C_0$ , which always admits a  $K$ -stable polarization [Ngh23] and can be taken to be the candidate of our tangent cone at infinity.

With this conical Calabi-Yau structure in hand, we generalize further the tentative construction in [BD19] to obtain new Calabi-Yau metrics with singular tangent cones at infinity. Our main result covers all the cases of symmetric spaces left by Biquard-Delcroix, namely the spaces with restricted root system  $A_2$ , the non-Hermitian infinite family  $\mathrm{Sp}_{2r} / \mathrm{Sp}_2 \times \mathrm{Sp}_{2r-2}$  and the finite family of multiplicity  $(8, 6, 1)$ , but also all the rank-two decomposable cases of type  $R_1 \times R_1$  not considered in [BD19], where each factor  $R_1$  is *any* symmetric space of rank 1.

**Theorem A.** *Every rank two symmetric space  $G/H$ , except of restricted root system  $G_2$ , admits a complete  $K$ -invariant  $\partial\bar{\partial}$ -exact Calabi-Yau metric of Euclidean volume growth with singular  $G$ -horospherical tangent cone  $C_0$  at infinity, which is*

- regular in the  $A_2$  cases.
- generally irregular in the  $BC_2$  and  $B_2$  cases.
- the product of the Stenzel asymptotic cones on each factor in the  $R_1 \times R_1$  cases.

Let us make some comments related to this theorem.

- Our result provides a full answer to Problem 1.5 for rank two symmetric spaces with prescribed horospherical Calabi-Yau cones. Geometrically, symmetric spaces up to rank two can all be interpreted as equivariant affine Calabi-Yau smoothings of horospherical singular tangent cones. As a result, we obtain the first examples of Calabi-Yau metrics on manifolds that are affine smoothings of *singular and irregular* tangent cones, but also a solution to the singular version of the irregular Tian-Yau problem 1.2 on  $BC_2/B_2$  symmetric spaces. Based on numerical evidence, it is very likely that *all the tangent cones in the  $BC_2/B_2$  cases are irregular*.

Irregularity can apparently only arise in symmetric spaces with “asymmetric” root system, i.e. root system with one simple root strictly longer than the other, which is the case for non- $A$ -type symmetric spaces of rank two. There should be some arithmetico-algebraic conditions, formulated only in terms of the combinatorial data, that account for this behavior and allow us to determine systematically the regularity of the Calabi-Yau cones, hence systematically Calabi-Yau metrics with irregular tangent cones. This could provide a partial answer to the singular version of the open question (1) in [CH22], which asks to produce examples of such metrics but in the AC context. We leave further exploration for the future.

- On a  $R_1 \times R_1$ -symmetric space, there is an obvious Calabi-Yau metric which is the product of the Stenzel metrics on the factors, whose tangent cone at infinity and  $K$ -stable Reeb vector are product. It turns out that the tangent cone of the Calabi-Yau metric obtained by our ansatz has *the same  $K$ -stable Reeb vector* as the product of the Stenzel tangent cones (cf. Subsection 2.4, Theorem 4.2 and Table 5), which implies that our metrics have the *same tangent cone at infinity as the product metric*. This comes out of our expectation, and we anticipate that the metrics on  $R_1 \times R_1$  can be related to the product metric by scalings on each factor.

Example 3.2 provides the description of the horospherical tangent cone in the  $A_1 \times A_1$  case that coincides with the product tangent cone (up to a finite covering).

- The symmetric spaces of type  $G_2$  are however excluded. This is practically due to the  $K$ -stable Reeb vector lying outside the Weyl chamber (see Theorem 4.2), hence the global potential is not well-defined if we try to expand the potential of the Calabi ansatz near the boundary divisors using Stenzel potentials.

While this explanation seems a practical one related to the construction, we expect that the existence of a Calabi-Yau smoothing is actually prevented by algebro-geometric conditions, and that in fact *there is no  $K$ -invariant Calabi-Yau metrics with horospherical tangent cone* on  $G_2$  symmetric spaces, yielding a negative example to Problem 1.2 when  $D$  is singular. This will be addressed more thoroughly by means of algebraic geometry in a forthcoming paper.

Since there is no nontrivial equivariant degeneration of a horospherical variety, the following corollary is somewhat trivial, but worth mentioning.

**Corollary B.** *Every Calabi-Yau symmetric space constructed in Theorem A degenerates to the horospherical tangent cone at infinity in only one step.*

This supports a recent conjecture made by Sun-Zhang that there is no semistability in the two-steps degeneration theory of Donaldson-Sun for the tangent cone at infinity, i.e. any Calabi-Yau metric of maximal volume growth should degenerate

Type	Representative	$R$	Multiplicities	Satake diagram	Hermitian
$AI$	$SL_3/SO_3$	$A_2$	1		
$A_2$	$PGL_3 \times PGL_3/PGL_3$	—	2		
$AIII$	$SL_6/Sp_6$	—	4		
$EIV$	$E_6/F_4$	—	8		
$AIIIa$	$SL_r/S(GL_2 \times GL_{r-2})$	$BC_2^*$	$(2r - 8, 2, 1), r \geq 5$		yes
$CIIIa$	$Sp_{2r}/Sp_4 \times Sp_{2r-2}$	—	$(4r - 16, 4, 3), r \geq 3$		
$DIIIa$	$SO_{10}/GL_5$	—	$(4, 4, 1)$		yes
$EIII$	$E_6/SO_{10} \times SO_2$	—	$(8, 6, 1)$		
$BDI$	$SO_r/SO_2 \times SO_{r-2}$	$B_2$	$(r - 4, 1, 0), r \geq 5$		yes
$AIIIb$	$SL_4/S(GL_2 \times GL_2)$	—	$(2, 1, 0)$		yes
$DIIIb$	$SO_8/GL_4$	—	$(4, 1, 0)$		yes
$B_2$	$SO_5 \times SO_5/SO_5$	—	$(2, 2, 0)$		
$CIIb$	$Sp_8/Sp_4 \times Sp_4$	—	$(4, 3, 0)$		
$G$	$G_2/SO_4$	$G_2$	1		
$G_2$	$G_2 \times G_2/G_2$	—	2		

TABLE 2. Indecomposable symmetric spaces of rank two. See also Convention 2.1 and Remark 2.2.

to the tangent cone at infinity in only one step [SZ22, Conjecture 6.4]. This was proved in *loc. cit.* for tangent cones at infinity with smooth link, and the result is quite unexpected since the 2-step degeneration theory works very similarly for local tangent cone, but *the semistable step can not always be eliminated in the local setting*. In the singular case, as mentioned above, there are already examples of Calabi-Yau metrics on  $\mathbb{C}^n$ ,  $n \geq 3$  degenerating to the regular and singular cone  $\mathbb{C} \times A_1$  in one step [Li19] [Szé20] [CR21]. Our new metrics provide many more examples of this kind, but also new examples of degeneration to the irregular tangent cone in only one step. However, we do not know if this phenomenon is true in general for noncompact Calabi-Yau spherical manifolds.

### 1.3. Organization.

- In Section 2, we provide preliminaries on symmetric spaces and recall basic facts about spherical cones, then prove Theorem 1.4.
- In Section 3, we provide details on the relevant geometric constructions in rank two and prove that all the candidates for the tangent cone are singular. We view  $G/H$  as open Zariski subset of a (in general non-smooth and non-Fano) one-divisor compactification  $X = G/H \cup D_0$ . In order to have reasonable models near the singularities of the tangent cone, we consider the blow-up of  $X$  along the two closed orbits, denoted by  $\tilde{X}$ . In particular, we have  $\tilde{X} \setminus (G/H) = D_0 \cup D_1 \cup D_2$ , with  $D_1, D_2$  being the two divisors



corresponding to the two closed orbits (see Section 3 for more details on the geometry of these divisors). The tangent cone at infinity  $C_0$  can be interpreted as the equivariant degeneration of  $G/H$  along a direction in the interior of the Weyl chamber.

The geometry at infinity of  $G/H$  contains: (i) the *generic regular region* modeled on the open orbit  $G/H_0 \times \mathbb{C}^*$  of the cone,  $G/H_0$  being the open orbit of  $D_0$ ; and (ii) the *boundary regions*, corresponding to  $D_0 \cap D_1 \setminus D_2$  and  $D_0 \cap D_2 \setminus D_1$ , which are also contained in the possible singularities of  $D_0$ .

The readers should compare this approach with the recent work of Collins-Li [CL22] where the compactification is Fano, and the Calabi ansatz is modeled upon the boundary divisors similarly as in [BD19]. Here we are able to choose a different ansatz, which is not a priori obvious by an analysis of K-stable valuations inside the Weyl chamber of our model, already carried out in the preparatory work [Ngh23].

- In Section 4, we produce the asymptotic solution from the conical Calabi-Yau metric on  $C_0$  using a Calabi ansatz (which applies even in the irregular horospherical case, cf. our previous work [Ngh23]), then analyze its behavior near  $D_1, D_2$ .
- In Section 5, we build models near  $D_1, D_2$  which are *warped products of AC metrics* (Ansatz 5.1), with first order terms matching with the asymptotics of the Calabi ansatz. The reader should compare this ansatz with the warped AC product introduced in [CR21].

The next step is to improve the decay rate of the Ricci potentials (Proposition 5.2), and glue these models with the Calabi ansatz. We verify that there is no obstruction to the gluing process in Lemma 5.6. The rank two assumption plays a crucial role in both part 4 and 5.

- In Section 6, we study the asymptotic geometry of the global asymptotic solution obtained in the previous section, and prove that the tangent cone at infinity of the metric is as expected.
- In Section 7, we prove our main Theorem A by appealing to Hein's existence package. To guarantee a quasi-atlas, as well as  $C^2$ -estimate for the complex Monge-Ampère equation, we impose a condition on the injectivity radius of the initial metric, which is equivalent to the holomorphic bisectional curvature being bounded (cf. Proposition 7.2). It turns out that all of our symmetric spaces have bounded holomorphic bisectional curvature with respect to the metric (see Table 5, as well as Lemma 7.4, 7.5). This condition depends only on the combinatorial data of the tangent cone, and should be related to some fine properties of the cone's singularities. For lack of any meaningful interpretation at this moment, we proceed to check the condition case by case, and hope to provide more details on this matter in a future study. We provide in Table 5 the relevant constants.

#### 1.4. Further discussions.

1.4.1. *Uniqueness.* We have not yet mentioned uniqueness of the Calabi-Yau metric with a fixed tangent cone at infinity. We expect that the proof can be done in the same lines as in Székelyhidi's paper [Szé20] with input from Donaldson-Sun's theory adapted to spherical manifolds, and a finer understanding of the geometry of the smoothing. We hope to come back to this question in a future paper.

Related to this uniqueness question, we point out in Example 3.3 a Kähler-Einstein log pair  $(X, D)$  where  $X$  is a smooth compactification of  $G/H$ , with finite automorphism group  $\text{Aut}_G(X, D)$ , and  $D$  a *singular* divisor with strictly larger automorphism group  $\text{Aut}_G(D)$ .

By a recent result of Biquard-Guenancia [BG22], on a *smooth* pair  $(X, D)$  such that  $D \in |-K_X|$ , the conic Kähler-Einstein metrics  $\omega_\beta$  with small angle  $0 < \beta \ll 1$  on  $D$  converges up to a rescaling factor to the Tian-Yau metric  $\omega_{TY}$  on  $X \setminus D$ . This confirms the folklore expectation that the Tian-Yau metrics on  $X \setminus D$  are not fortuitous as they appear, but arise in a canonical way from conic Kähler-Einstein metrics on the given smooth compactification  $(X, D)$  with smooth divisor.

The author learned from Biquard-Delcroix-Guenancia that a similar result is expected to hold in the case where  $\alpha D \in |-K_X|$  with  $\alpha > 1$  and  $D$  being Kähler-Einstein (this is proved for smooth horosymmetric pairs of rank one in [Del23]), or even in the singular context. However, note that the Calabi-Yau metrics in our example should arise in a two-parameters family (with parameters being the scaling factor and translation in the real variables), while the metrics  $\omega_\beta$  occur only in a finite orbit by Matsushima's uniqueness theorem. It would be interesting to obtain examples of this kind but with *smooth*  $D$ .

1.4.2. *Regularity of the horospherical Calabi-Yau cone structure.* As mentionned, we do not know how to systematically determine the regularity of the Calabi-Yau structure on the horospherical tangent cones at infinity. Explicit computations in rank two suggest that all the tangent cones are irregular, except in the  $A_2$  or  $R_1 \times R_1$  cases. This leads us to conjecturing the following.

**Conjecture 1.8.** *The horospherical tangent cones at infinity of the symmetric spaces are irregular, except for the symmetric spaces with restricted root system of all the factors being of type A.*

To be precise, from our previous work [Ngh23], the K-stability condition on a rank two horospherical cone  $(C, \xi)$  is in fact equivalent to the parameter of the Reeb vector  $\xi$  being the unique positive solution to a one-variable polynomial. It is then reasonable to speculate that the regularity conjecture can be reformulated in terms of an algebro-arithmetic question. For instance, the conjecture for the tangent cones of the infinite family  $\text{SL}_r / \text{S}(\text{GL}_2 \times \text{GL}_{r-2})$ ,  $r \geq 5$  can be translated as

**Conjecture 1.9.** *For all  $r \geq 5$ , the unique positive root of*

$$Q(t, r) = \int_{\frac{-4}{2+t}}^{\frac{2r-6}{1+t}} p(4+(2+t)p)^2(4r-8-tp)^2(2r-6-(1+t)p)^{2r-7}(2r-2+p)^{2r-7} dp = 0$$

(cf. Lemma 7.5) is irrational.

A possible approach is to show by induction that one can always factor out an irreducible polynomial, but the difficulty lies in proving irreducibility of the polynomial over  $\mathbb{Q}$ .

**Acknowledgements.** This paper is part of a thesis prepared under the supervision of Thibaut Delcroix and Marc Herzlich, partially supported by ANR-21-CE40-0011 JCJC project MARGE. I am grateful to Thibaut Delcroix for many helpful discussions, and to Gábor Székelyhidi for valuable comments.

## 2. COMPLEX SYMMETRIC SPACES AND SPHERICAL CONES

2.1. **General setup.** Let  $G$  be endowed with a nontrivial involution  $\theta \in \text{Aut}(G)$ . Let  $T_s$  be a maximal torus such that  $\theta(t) = t^{-1}$  for all  $t \in T_s$ , and  $T$  be the maximal

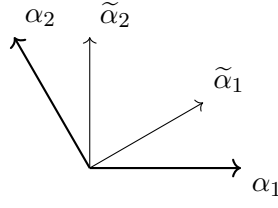


FIGURE 1. Restricted root system of  $A_2$  symmetric spaces and their Weyl generators.

$\theta$ -stable torus containing  $T_s$ . The *Cartan algebra*  $\mathfrak{a}$  of the symmetric space  $G/H$  is the Lie algebra of the maximal noncompact subgroup of  $T_s$ .

Let  $\widehat{R}^\theta$  be the set of roots fixed by  $\theta$  and  $\widehat{R}$  be the root system of  $(G, T)$  with positive root system  $\widehat{R}^+$  chosen such that if  $\widehat{\alpha} \in \widehat{R}^+ \setminus \widehat{R}^\theta$  then  $-\theta(\widehat{\alpha}) \in \widehat{R}^+$ . The restricted root system is then defined as

$$R := \left\{ \alpha = \widehat{\alpha} - \theta(\widehat{\alpha}), \widehat{\alpha} \in \widehat{R} \setminus \widehat{R}^\theta \right\}.$$

In general, the root system  $R$  is non-reduced (e.g. the restricted root system of type  $BC_2$ ). The Weyl group  $W$  associated to  $R$  is called the *restricted Weyl group*. Given  $\widehat{R}^+$ , the set of positive restricted roots  $R^+$  is defined as

$$R^+ := \left\{ \alpha = \widehat{\alpha} - \theta(\widehat{\alpha}), \widehat{\alpha} \in \widehat{R}^+ \setminus \widehat{R}^\theta \right\}.$$

The choice of  $R^+$  on a semisimple symmetric space determines a strictly convex cone, which is the fundamental domain of  $W$ , called the *restricted positive Weyl chamber* (or simply *the Weyl chamber* when the context is clear).

The *multiplicity* of a restricted root  $\alpha$ , defined as  $m_\alpha$ , is the number of  $\widehat{\alpha} \in \widehat{R}$  such that  $(\widehat{\alpha} - \theta(\widehat{\alpha}))|_{\mathfrak{a}} = \alpha|_{\mathfrak{a}}$ . If  $G/H$  is a (complex) symmetric space of dimension  $n$  and of rank  $k$ , then

$$n = k + \sum_{\alpha \in R^+} m_\alpha.$$

**Convention 2.1.** *Throughout the text, we use the notation  $\langle \cdot, \cdot \rangle$  for the Killing form. For a symmetric space of multiplicities  $(m_1, m_2, m_3)$ , we mean a symmetric space of type  $BC_2$  with  $m_3 \geq 1$  and  $B_2$  with  $m_3 = 0$ , where  $(m_1, m_3)$  is the multiplicities of  $(\alpha_1, 2\alpha_1)$ ,  $\alpha_1$  being the short root, and  $m_2$  is the multiplicity of the long root  $\alpha_2$ .*

The Duistermaat-Heckman polynomial of  $G/H$  is defined as

$$P(p) := \prod_{\alpha \in R^+} \langle \alpha, p \rangle^{m_\alpha}.$$

We will denote by  $\widetilde{\alpha}_2, \widetilde{\alpha}_1$  the *generators* or *wall directions* of the given positive Weyl chamber, which write

$$(1) \quad \widetilde{\alpha}_2 = \alpha_2 + \zeta_2 \alpha_1, \quad \widetilde{\alpha}_1 = \alpha_1 + \zeta_1 \alpha_2,$$

where

$$(2) \quad \zeta_2 = -\frac{\langle \alpha_2, \alpha_1 \rangle}{\langle \alpha_1, \alpha_1 \rangle}, \quad \zeta_1 = -\frac{\langle \alpha_2, \alpha_1 \rangle}{\langle \alpha_2, \alpha_2 \rangle}.$$

An important constant is the *sum of the positive restricted roots*

$$\varpi := \sum_{\alpha \in \widehat{R}^+ \setminus \widehat{R}^\theta} 2\widehat{\alpha} = \sum_{\alpha \in R^+} m_\alpha \alpha.$$

In the rank two cases, we have in particular

$$\varpi = A_1\alpha_1 + A_2\alpha_2,$$

where

$$A_1 = \frac{\langle \varpi, \tilde{\alpha}_1 \rangle}{\langle \alpha_1, \tilde{\alpha}_1 \rangle}, \quad A_2 = \frac{\langle \varpi, \tilde{\alpha}_2 \rangle}{\langle \alpha_2, \tilde{\alpha}_2 \rangle}.$$

The list of symmetric spaces of rank two, as well as their Satake diagrams, are listed in Table 2. The support of a Satake diagram is the same as the Dynkin diagram of  $G$ , but with black nodes corresponding to simple roots fixed by  $\theta$ . The extra arrows join pairs of simple roots  $(\hat{\alpha}, \hat{\beta})$  such that

$$(\hat{\alpha} - \theta(\hat{\alpha}))|_{\mathfrak{a}} = (\hat{\beta} - \theta(\hat{\beta}))|_{\mathfrak{a}}.$$

The Satake diagrams will be used to determine which tangent cones are singular.

**Remark 2.2.** *Compared with the list in [BD19, Table 1], we single out two classes of symmetric spaces, namely the AIIIb type (which is tacitly assumed to be in AIIIa with  $m_3 = 0$  in [BD19]) and DIIIb type. Even if they are redundant in terms of restricted root system and multiplicities, they truly need to be distinguished from the family  $\mathrm{SO}_r / \mathrm{SO}_2 \times \mathrm{SO}_{r-2}$  (in terms of involution) because their tangent cones have distinct spherical actions.*

**2.2. Spherical cones.** Recall that a  $G$ -spherical variety is a normal variety containing a Zariski-open orbit under the action of a Borel subgroup  $B \subset G$ . A  $G$ -spherical variety is the  $G$ -equivariant embedding of a homogeneous space  $G/H$  that contains the open orbit of a Borel subgroup. Such homogeneous space is called a *spherical*. The set  $\mathcal{D}$  of irreducible components of the  $B$ -stable reduced divisor inside  $G/H$  is called the set of *colors* of  $G/H$ .

An equivariant embedding of a spherical space is called *simple* if it contains a unique closed orbit. To each simple spherical embedding  $G/H \subset E$ , the orbit-cone correspondence in spherical variety theory then associates an object  $(\mathcal{C}_E, \mathcal{D}_E)$ , called the *colored cone*, which consists of an Euclidean convex cone  $\mathcal{C}_E$  and a subset  $\mathcal{D}_E \subset \mathcal{D}$  with elements being the (closures of the) colors of  $G/H$  containing the closed orbit in  $E$ . General spherical embeddings are classified by *colored fans*, i.e. collections of colored cones with some compatibility conditions [Kno91].

We say that a  $G$ -equivariant affine embedding  $C$  of a spherical space  $G/H$  is a *spherical cone* or *conical embedding* if  $C$  has a unique fixed point (which is also the unique closed orbit) under the  $G$ -action. Every spherical cone is in fact a Fano cone singularity [Ngh23].

**Theorem 2.3.** [Ngh23] *The colored cone  $(\mathcal{C}_C, \mathcal{D}_C)$  of a conical embedding  $G/H \subset C$  consists of a strictly convex cone of maximal dimension  $\mathcal{C}_C$  with  $\mathcal{D}_C$  being the set of all the colors of  $G/H$ .*

**Definition 2.4.** [Del20b] *A horosymmetric (resp. horospherical) space  $G/H$  of rank  $k$  is an equivariant fibration with fiber a symmetric space of rank  $k$  (resp. a complex torus  $(\mathbb{C}^*)^k$ ) over a flag manifold  $G/P$ . A horosymmetric (resp. horospherical) variety is an equivariant embedding of a horosymmetric (resp. horospherical) space.*

There are two kinds of cones that appear in the  $G$ -equivariant degeneration of a semisimple symmetric space  $G/H$  of rank two. First, the *horosymmetric cone*, which corresponds to the degeneration of  $G/H$  along a valuation defined by a generator of the restricted Weyl chamber (viewed as a convex cone). Second, the *horospherical cone*, which corresponds to the equivariant degenerations of  $G/H$  along any valuation in the interior of the restricted Weyl chamber.

Both cones are conical embeddings of open orbits of the form  $G/H_0$ , with  $H_0$  being a closed subgroup of  $G$  endowing  $G/H_0$  with the corresponding fibration structure.

**Example 2.5.** *Let  $G/H$  be a semisimple symmetric space of rank  $k$  such that  $H = N_G(G^\theta)$ . By [DCP83],  $G/H$  always admits a simple smooth  $G$ -equivariant compactification  $X$  called the wonderful compactification.*

*The divisors of  $X$  consist of  $k$  connected components  $D_1, \dots, D_k$ , each being a smooth horosymmetric variety of rank  $k - 1$ . As described in [DCP83], each  $D_i$  is an equivariant fibration over a flag manifold  $G/P_i$  with fiber a symmetric variety  $X_i$  of rank  $k - 1$ .*

*The canonical divisor of  $X$  can be represented as*

$$K_X = \sum_{i=1}^k (A_i + 1)D_i, \quad A_i \in \mathbb{N}_+^*.$$

*Taking the cone (with respect to the some canonical polarization) over an equivariant blowdown of  $D_i$  making  $D_i$  a Fano variety yields a horosymmetric cone.*

**2.3. The Ricci-flat equation on symmetric spaces.** Given the  $K$ -invariant volume form  $dV_H$  associated to the standard Hermitian metric on the canonical bundle of  $G/H$  [Del20a], our goal is to find a  $K$ -invariant metric in the trivial Kähler class which has the same volume form as  $dV_H$ .

**Remark 2.6.** *In what follows, we only consider  $K$ -invariant  $\partial\bar{\partial}$ -exact Kähler metrics, but note that on non-Hermitian symmetric spaces,  $K$ -invariance already implies  $\partial\bar{\partial}$ -exactness by a result of Azad and Loeb [AL92].*

Following [AL92], any  $K$ -invariant  $\partial\bar{\partial}$ -exact metric  $\omega = dd^c\Phi$  on  $G/H$  is determined by a  $W$ -invariant convex function  $\rho$  on the Cartan algebra  $\mathfrak{a}$ . The problem then amounts to solving the following real Monge-Ampère equation.

**Theorem 2.7.** [Del20a] *A smooth  $K$ -invariant strictly psh function  $\Phi$  defines a Ricci-flat metric on  $G/H$  if and only if  $\rho(x) := \Phi(\exp(x)H)$  satisfies for all  $x \in \mathfrak{a}$ :*

$$(3) \quad \det(d^2\rho) \prod_{\alpha \in R^+} \langle \alpha, d\rho \rangle^{m_\alpha} = \prod_{\alpha \in R^+} \sinh^{m_\alpha}(\alpha(x))$$

**Definition 2.8.** *For a  $W$ -invariant convex function  $\rho$  on  $\mathfrak{a}$ , the function*

$$(4) \quad \mathcal{P}(\rho) := \ln \det(d^2\rho) + \sum_{\alpha \in R_+} m_\alpha (\ln \langle \alpha, d\rho \rangle - \ln \sinh \alpha)$$

*is called the Ricci potential of  $\rho$ .*

**2.4. The rank one case.**

*Proof of Theorem 1.4.* Let  $G/H$  be a rank-one symmetric space of dimension  $n$  with positive roots  $(\alpha, 2\alpha)$  of multiplicities  $(m, \widehat{m})$ , where we allow  $\widehat{m} = 0$  for symmetric spaces of restricted root system  $A_1$ . In particular,

$$n = 1 + m + \widehat{m}.$$

The candidate for the tangent cone at infinity of  $G/H$  can be obtained as follows. Let  $\nu$  be a  $G$ -invariant valuation on  $G/H$ . The spherical embedding of  $G/H \times \mathbb{C}^*$  defined by  $(\nu, 1)$  and all the colors of  $G/H \times \mathbb{C}^*$  yields a degeneration with central fiber the divisor corresponding to the ray  $(\nu, 1)$ , which is in fact a  $G$ -horospherical cone  $C$  of rank one by [BP87] and Theorem 2.3.

The smoothness of the link is clear, because singularities occur in  $G$ -orbits, and the  $G$ -orbits of a rank one cone are the fixed point and the open  $G$ -orbit. The cone

$C$  has the same weight lattice and Cartan algebra  $\mathfrak{a}$  as  $G/H$ . The total sum of the positive root of  $G/H$  is

$$\varpi = (m + 2\widehat{m})\alpha = (n - 1 + \widehat{m})\alpha,$$

given the relation  $n = 1 + m + \widehat{m}$ . Using the root and fundamental coweight  $(\alpha, \omega_\alpha^\vee)$  as basis on  $(\mathfrak{a}^*, \mathfrak{a})$ , the  $K$ -invariant conical Calabi-Yau potential on  $C$ , which is uniquely determined by a strictly convex positive function  $u : \mathfrak{a} \rightarrow \mathbb{R}$ , satisfies the following equation

$$(5) \quad u''(x)u'(x)^{m+\widehat{m}} = e^{(m+2\widehat{m})x} = e^{(n-1+\widehat{m})x},$$

where  $e^{(n-1+\widehat{m})x}$  is the volume density of the canonical volume form on  $C$  [Ngh23]. A generic solution is then

$$u(x) = \frac{n^2}{(n-1+\widehat{m})^2} e^{\frac{n-1+\widehat{m}}{n}x} + Ax + B.$$

The Reeb vector  $\xi = \lambda\omega_\alpha^\vee$  is uniquely determined by  $\langle \varpi, \xi \rangle = n$ , i.e.

$$\xi = \frac{n}{n-1+\widehat{m}} \omega_\alpha^\vee.$$

The solution of Equation (5) suggests we take

$$u(x) = ce^{\frac{n-1+\widehat{m}}{n}x}$$

as the Calabi ansatz for a suitable constant. The Ricci-flat ODE in rank one writes

$$(6) \quad \rho''(x)\rho(x)^{m+\widehat{m}} = \sinh^m(x) \sinh^{\widehat{m}}(2x).$$

Plugging the Calabi ansatz into Equation (6) yields an asymptotic solution with Ricci potential decay of rate  $O(e^{-2x}) = O(r^{-\frac{4n}{n-1+\widehat{m}}})$ , where  $r^2 = e^{\frac{n-1+\widehat{m}}{n}x}$  is the distance function on the cone. Also, one can average  $u$  by the action of  $W = \{1, -1\}$  to obtain a smooth, even, strictly convex function  $(u(x) + u(-x))/2$  on  $\mathfrak{a}$ , still denoted by  $u$ , which is also an asymptotic solution to (6) having the same Ricci potential decay as the Calabi ansatz, and defines a  $K$ -invariant trivial Kähler class  $[dd^c u]$  on  $G/H$ .

Since  $u''$  is asymptotic to  $r''$  at rate  $O(e^{-2(n-1+\widehat{m})x/n}) = O(r^{-4})$ , the global  $(1, 1)$ -form defined by  $u$  then decays at rate  $O(r^{-4})$ . Note that in this case, the volume density of  $G/H$  satisfies

$$V(x) = e^{(n-1+\widehat{m})x}(1 + O(e^{-x})),$$

which is asymptotically the density of the canonical volume form of  $C$  at rate  $O(e^{-x}) = O(r^{-\frac{2n}{n-1+\widehat{m}}})$ . Remark that there is an equivariant compactification  $X$  of  $G/H$  such that  $X \setminus G/H = D$  is a smooth Fano Kähler-Einstein manifold and satisfies as a divisor

$$-K_X = (A + 1)D, \quad A \in \mathbb{N}_+^*.$$

Moreover the conormal bundle over  $D$  with zero section contracted  $(N_D^*)^\times \simeq (\frac{1}{A}K_D)^\times$  is in fact isomorphic to the regular Calabi-Yau cone  $C$  obtained by equivariant degeneration. Since the trivial class contains a form with decay rate  $O(r^{-4})$ , appealing to Conlon-Hein's existence theorem [CH15] then provides us a (unique up to scaling) asymptotically conical Calabi-Yau metric on  $G/H$  in the trivial Kähler class whose tangent cone at infinity is the horospherical tangent cone, with rate of convergence

$$\frac{2n}{n-1+\widehat{m}}.$$

Smoothness implies that the cone is unique by Colding-Minicozzi's uniqueness theorem [CM14].  $\square$

**Example 2.9.** *The manifold  $M := T^*\mathbb{S}^n$  is homeomorphic to  $\mathrm{SO}(n+1)/\mathrm{SO}(n)$  endowed with the symmetric space structure.*

*When  $n > 2$ ,  $M$  is non-Hermitian with  $(m, \widehat{m}) = (n-1, 0)$  and admits a  $\mathrm{SO}_{\mathbb{R}}(n+1)$ -invariant (hence  $\partial\bar{\partial}$ -exact, cf. Remark 2.6) Calabi-Yau metric asymptotically conical to the ordinary double point  $(C, g_0)$  in  $\mathbb{C}^{n+1}$ , where*

$$C = \{z_1^2 + \cdots + z_{n+1}^2 = 0\}$$

*is Calabi-Yau with the  $\mathrm{SO}_{\mathbb{R}}(n+1)$ -invariant cone metric  $\omega_0 = dd^c |z|^{2-2/n}$ . This is the unique  $\mathrm{SO}_{\mathbb{R}}(n+1)$ -invariant Calabi-Yau metric on  $C$ , viewed as a horospherical cone under the induced  $\mathrm{SO}(n+1) \times \mathbb{C}^*$  action. Geometrically,  $M$  can be interpreted as an equivariant smoothing of the ordinary double point.*

**Remark 2.10.** *The rate of convergence is likely to be optimal for all rank-one symmetric spaces in the following sense: there is a diffeomorphism  $\Phi$  between  $G/H$  and  $C$  outside of a compact subset such that  $h := \Phi^*g - g_0$  satisfies the Bianchi gauge condition*

$$\mathrm{div}_{g_0}(h - \frac{1}{2} \mathrm{tr}_{g_0}(h)g_0) = 0.$$

*This is proved for the case  $M = \mathrm{SO}(n+1)/\mathrm{SO}(n)$  with  $n > 2$  by realizing  $\Phi$  as a projection of  $C$  onto  $M$  in some  $\mathbb{C}^N$  [CH13].*

The following result is elementary, but important because it tells us how we can choose the constants in the Calabi ansatz so that the latter agrees with the Stenzel-like model during the gluing process, as the reader shall see.

**Proposition 2.11.** *Up to an additive constant, the Stenzel potential  $w$  solution to*

$$Aw''(x)(w'(x))^{m+\widehat{m}} = \sinh^m(x) \sinh^{\widehat{m}}(2x),$$

*where  $A > 0$ , has the asymptotic expansion*

$$w(x) = Ke^{ax} \left(1 + \sum_{k \geq 1} c_k e^{-2kx}\right),$$

*where  $a = \frac{n-1+\widehat{m}}{n}$  and*

$$(7) \quad K = \frac{n}{n-1+\widehat{m}} \left( \frac{n}{A(n-1+\widehat{m})2^{n-1}} \right)^{\frac{1}{n}}.$$

*Proof.* Let  $v := w'$ . Remark that the equation is equivalent to

$$\frac{A}{n} (v(x)^n)' = \sinh^m(x) \sinh^{\widehat{m}}(2x).$$

It follows that

$$(v(x)^n)' = \frac{n}{A} \frac{e^{(n-1+\widehat{m})x}}{2^{n-1}} (1 - e^{-2x})^m (1 - e^{-4x})^{\widehat{m}},$$

hence

$$v(x) = \left( \frac{n}{A(n-1+\widehat{m})2^{n-1}} \right)^{\frac{1}{n}} e^{\frac{n-1+\widehat{m}}{n}x} \left(1 + \sum c_k e^{-2kx}\right).$$

Thus we obtain the result after suitably choosing a constant in the integration.  $\square$

3. GEOMETRIC PRELUDE

**3.1. Geometric constructions.** In higher rank, there are more choices of equivariant degenerations, hence more candidates for the tangent cone at infinity. Compared with the rank-one case, a new feature in higher rank is that the potential tangent cones are singular in general, so the Calabi ansatz from the cone does not yield directly a global potential on the symmetric space. One must then appeal to gluing techniques, and decay rate improvement methods to get a global potential with good decay properties.

The candidates for tangent cones of the symmetric space in the rank-two cases can be geometrically obtained as follows.

- First for a rational  $G$ -invariant valuation in  $G/H$ , one can embed  $G/H$  into a symmetric projective variety  $X$  using (i) the valuation and (ii) either one of the colors if the valuation is on the Weyl wall, or both colors if the valuation is in the interior of the Weyl chamber. The former is the approach of [BD19], and the latter is our approach (see Figure 2).

The variety  $X$  consists of the open dense orbit, two closed  $G$ -orbits of codimension  $\geq 2$ , and a unique  $G$ -invariant divisor  $D_0$ .

- Taking the affine cone over  $X$  (with respect to its “canonical”  $G$ -linearized polarization) yields the total space  $C(X)$  of the degeneration. The central fiber of this cone yields the candidate for the tangent cone  $C_0$ .

**Remark 3.1.** *Let  $T_0$  be the connected component of  $\text{Aut}_G(C_0)$  and  $\mathfrak{t}_{nc}$  be the non-compact Lie algebra of  $T_0$  as in [Ngh23]. Since  $C_0$  is an equivariant degeneration of  $G/H$ , their function fields coincide as  $G$ -modules, hence their weight lattices coincide, so  $\mathfrak{t}_{nc} = \mathfrak{a}$  as duals of the weight lattices tensored over  $\mathbb{R}$ . The fact that  $\mathfrak{t}_{nc} = \mathfrak{a}$  allows us to reduce questions of Gromov-Hausdorff convergence to equivalence of functions on  $\mathfrak{a}$ .*

By [BP87], the rational elements in the interior of the Weyl chamber yield isomorphic candidates (as  $G$ -horospherical varieties) for the tangent cones at infinity, so the construction does not depend on the choice of such element. To “desingularize” the Calabi ansatz from the cone  $C_0$ , we view  $D_0$  as embedded in  $\tilde{X}$ , which is the blow-up of  $X$  along the Weyl walls so that

$$\tilde{X} \setminus (G/H) = D_0 \cup D_1 \cup D_2,$$

where  $D_1, D_2$  are the divisors corresponding to the Weyl walls  $\tilde{\alpha}_1, \tilde{\alpha}_2$ . Let us provide some details on the geometry of the divisors.

- The open orbit  $G/H_i$  of each  $D_i$  is a fibration over a flag manifold with fiber a symmetric space of rank one  $X_i$ . From spherical variety theory [DCP83][Theorem 5.2], each  $D_i$  is a fibration over a flag manifold  $G/P_i$  with fiber the wonderful compactification of  $X_i$ . The divisor  $D_0$  in  $\tilde{X}$  is then a three-orbits variety, which consists of the open dense orbit and two closed orbits  $D_0 \cap D_1, D_0 \cap D_2$  which are also the possible singularities of  $D_0$ .
- The conical Calabi-Yau metric on  $C_0$  is only well-defined as a Kähler-Einstein current over the singular loci. In order to obtain a smooth asymptotic solution from the Calabi ansatz, we proceed to build smooth models on neighborhoods of  $D_0 \cap D_1, D_0 \cap D_2$  based on the asymptotic behavior of the Calabi ansatz near  $D_1, D_2$ . It turns out that the Calabi ansatz behaves like a warped product of AC metrics near the singularities, cf (16) and Ansatz 5.1.



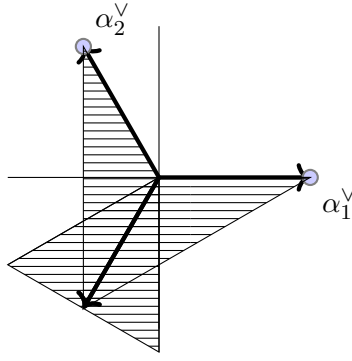


FIGURE 2. The colored fan of the compactification  $X$  in the indecomposable  $A_2$ -cases. Here  $\alpha_{1,2}^v$  denote the restricted coroots which are also the images of the colors of  $X$ . The colored fan of  $\tilde{X}$  is obtained by subdividing the fan of  $X$  using the rays  $-\mathbb{R}_{\geq 0}\tilde{\alpha}_{1,2}$ .

- To be precise, we build a model metric on an equivariant blowdown  $K_{D_i^v}$  of  $K_{D_i}$  (which has open orbit  $\mathbb{C}^* \times G/H_i$ ) that contracts  $G/P_i$  to a point. This model is in fact equivalent to  $\mathbb{S}^1$ -invariant metrics near singularities of  $C_0$ .

The roots  $\alpha_1, \alpha_2$  as elements in  $\mathfrak{a}^*$  represent directions to the divisors  $D_1, D_2$  at infinity of  $G/H$ . Namely, if  $x_k = \exp(v_k) \rightarrow x_\infty \in \bigcap_{j \in J} D_j$ , where  $J \subset \{1, 2\}$ , then  $\alpha_j(v_k) \rightarrow +\infty$  for all  $j \in J$ . To capture the behavior near  $D_1$  and  $D_2$ , we will use orthogonal coordinates  $(\tilde{\alpha}_1, \alpha_2), (\alpha_1, \tilde{\alpha}_2)$  in  $\mathfrak{a}^*$ .

Let  $\beta$  be a (possibly irrational) direction in the *interior* of the Weyl chamber. As stated in the introduction, we will mainly consider the generic region where  $\beta \sim \alpha_2 \sim \alpha_1 \gg 1$ , and the two boundary regions  $\beta \sim \alpha_2 \gg \alpha_1 \sim 1$  and  $\beta \sim \alpha_1 \gg \alpha_2 \sim 1$ , which are geometrically  $D_0 \setminus (D_1 \cup D_2)$ ,  $D_0 \cap D_2 \setminus D_1$  and  $D_0 \cap D_1 \setminus D_2$ , respectively.

**Example 3.2.** The  $(n-1)$ -dimensional projective quadric  $Q^{n-1}$  defined by the equation  $\sum_{j=1}^{n+1} z_j^2 = 0$  in  $\mathbb{P}_{z_1, \dots, z_{n+1}}^{n-1}$ , can be viewed as the compactification  $X$  of the symmetric space  $(\mathrm{SO}_{m_1+1} \times \mathrm{SO}_{m_2+1})/H$  where  $H = \mathrm{Stab}[1 : 0 \cdots : 1 : \cdots : 0]$ . Although the restricted root system is of type  $A_1 \times A_1$ , this is not a product of two symmetric spaces of type  $A_1$ , but a finite covering of the latter, cf. [Ruz10][Theorem 5, (1)]. The compactification  $X$  of the product is thus a finite quotient of  $Q^{n-1}$ . The quadric  $Q^{n-1}$  is described in [Ruz10] in terms of Grassmannians. Here we provide the more concrete description of  $Q^{n-1}$  in [Del22].

Let  $\pi_1, \pi_2$  be the rational projections from  $\mathbb{P}^n$  to  $\mathbb{P}^{m_1}$  and  $\mathbb{P}^{m_2}$ . The open orbit is formed by the points in  $Q^{n-1}$  where both  $\pi_1, \pi_2$  are well-defined. The two closed orbits are formed by the points in  $Q^{n-1}$  where  $\pi_1$  or  $\pi_2$  are not defined, which can be identified with the quadrics

$$Q^{m_1} = \left\{ \sum_{j=1}^{m_1+1} z_j^2 = 0 \right\}, \quad Q^{m_2} = \left\{ \sum_{j=m_1+2}^{n+1} z_j^2 = 0 \right\}.$$

The codimension one orbit  $D_0$  is formed by the points in  $Q^{n-1}$  where both  $\pi_1, \pi_2$  are defined and lie in the corresponding quadrics. In short,  $D_0$  is a finite covering of the product divisor

$$(Q^{m_1} \times Q^{m_2}) \cap Q^{n-1}$$

on the corresponding compactification of  $\mathrm{SO}_{m_1+1}/S(O_1 \times O_{m_1}) \times \mathrm{SO}_{m_2+1}/S(O_1 \times O_{m_2})$ ,  $m_1 \geq 2$ .

**Example 3.3.** *Let us now describe the compactification  $X$  of  $O := \mathrm{SL}_3/\mathrm{SO}_3$ . In fact,  $O$  can be viewed as the projectivization of the quadratic forms in  $S^2(\mathbb{C}^3)^*$  with unit determinant. In other words,  $O$  is the following affine subset of  $\mathbb{P}(\mathbb{C} \oplus S^2(\mathbb{C}^3)^*)_{z_0, \dots, z_6}$ :*

$$O = [Q \in \mathbb{P}(S^2(\mathbb{C}^3)^*), \det(Q) = z_0] \cap [z_0 = 1].$$

*Let  $\widehat{\omega}_{1,2}$  be the fundamental weights of  $G$  with highest weight vectors  $v_{1,2}$  where  $v_1 \in S^2(\mathbb{C}^3)^*$ ,  $v_2 \in S^2(\mathbb{C}^3)$ . The vector spaces  $S^2(\mathbb{C}^3)^*$ ,  $S^2(\mathbb{C}^3)$  are in fact the simple  $\mathrm{SL}_3$ -modules with highest weights  $\widehat{\omega}_1, \widehat{\omega}_2$ , respectively. Let  $Q^\vee$  be the adjoint matrix of  $Q$ . We embed  $O$  by the map*

$$\begin{aligned} O &\hookrightarrow \mathbb{P}(\mathbb{C} \oplus S^2(\mathbb{C}^3)^* \oplus S^2(\mathbb{C}^3)) \simeq \mathbb{P}^{12} \\ Q &\rightarrow [1, \quad Q, \quad Q^\vee]. \end{aligned}$$

*Taking the closure of  $O$  inside this projective space then yields the compactification  $X$  with the unique  $G$ -stable divisor*

$$D_0 := \{\det(Q) = 0\} \cap X.$$

*Alternatively,  $D_0$  is given by the closure in  $\mathbb{P}(S^2(\mathbb{C}^3)^* \oplus S^2(\mathbb{C}^3)) \simeq \mathbb{P}^{11}$  of  $G(v_1 + v_2)$ , so  $D_0$  is in particular horospherical. The  $G$ -valuation associated to  $D_0$  is  $-(\widehat{\omega}_1^\vee + \widehat{\omega}_2^\vee)/2$ .*

*By [Ruz10, Theorem 3],  $\mathrm{Aut}^0(X) = \mathrm{SL}_3$ , hence*

$$\mathrm{Aut}_G^0(X) = Z(\mathrm{SL}_3) = \{\lambda I_3, \lambda \in \mathbb{C}, \lambda^3 = 1\} \simeq \mathbb{Z}_3,$$

*and  $\mathrm{Aut}_G^0(C, \xi)$  is  $(\mathbb{C}^*)^2$ . In particular, there can only be finitely many Kähler-Einstein metrics on the pair  $(X, D)$ , while there is a two-parameters family of conical Calabi-Yau metrics on  $C$ , hence a priori two-parameters choice of the Calabi ansatz to build Calabi-Yau metrics.*

**3.2. Singularity of tangent cones.** We will use Pasquier's smoothness criterion for horospherical varieties to prove that all of the tangent cones are in fact singular. With the same setup as in 2.1, we denote by  $\widehat{S}$  the set of simple roots with respect to the choice of a positive root system  $\widehat{R}^+$  of  $(G, T)$ .

A  $G$ -horospherical homogeneous space with open Borel orbit is uniquely determined by a sublattice  $\mathcal{M}$  of  $\mathbb{Z}\widehat{S}$ , and a subset  $I \subset \widehat{S}$  such that  $\langle \chi, \widehat{\alpha}^\vee \rangle = 0$  for all  $\chi \in \mathcal{M}$  and  $\widehat{\alpha} \in I$ . The dual lattice  $\mathcal{N}$  of  $\mathcal{M}$  is called the coweight lattice.

The set  $I$  corresponds to the parabolic subgroup  $P_I$  that left-stabilizes the open Borel orbit, and there is a one-to-one correspondence between the set of colors  $\mathcal{D}$  and the coroots in  $\widehat{S} \setminus I$ .

**Theorem 3.4.** [Pas06] *Let  $\sigma$  be the map from  $\mathcal{D}$  that sends a divisor to its valuation viewed in  $\mathcal{N}$ . A simple  $G$ -horospherical variety with colored cone  $(\mathcal{C}, \mathcal{F})$  is locally factorial if and only if the following two conditions are satisfied:*

- *The elements of  $\mathcal{F}$  have pairwise distinct images by  $\sigma$ .*
- *$\mathcal{C}$  is generated by a basis of  $\mathcal{N}$  containing  $\sigma(\mathcal{F})$ .*

**Definition 3.5.** [Pas06] *Let  $I, J$  be two disjoint subsets of  $\widehat{S}$ . Let  $\Gamma_{\widehat{S}}$  be the Dynkin diagram of  $G$ , and  $\Gamma_{I \cup J}$  be a subgraph of  $\Gamma_{\widehat{S}}$  whose vertices and edges consist of the elements in  $I \cup J$  and the edges in  $\Gamma_{\widehat{S}}$  joining two elements in  $I \cup J$ .*

*The couple  $(I, J)$  is said to be smooth if every connected component  $\Gamma$  of  $\Gamma_{I \cup J}$  satisfies one of the following conditions.*

- (1)  *$\Gamma$  is a Dynkin diagram of type  $A_n$  whose vertices are all in  $I$ , except one of the two endpoints being in  $J$ .*

- (2)  $\Gamma$  is a Dynkin diagram of type  $C_n$  whose vertices are all in  $I$ , except the simple (i.e. not connected to the double edge) endpoint being in  $J$ .
- (3)  $\Gamma$  is a Dynkin diagram of arbitrary type whose vertices are all in  $I$ .

**Theorem 3.6.** [Pas06] *A simple embedding  $E$  with colored cone  $(\mathcal{C}, \mathcal{F})$  of a horospherical space  $G/H$  is smooth if and only if the following conditions hold.*

- $E$  is locally factorial.
- If we let  $J_{\mathcal{F}} = \left\{ \hat{\alpha} \in \hat{S} \setminus I, D_{\hat{\alpha}} \in \mathcal{F} \right\}$ , then the couple  $(I, J_{\mathcal{F}})$  is smooth.

Let  $\beta_0$  be the ray corresponding to  $D_0$  in the colored fan of the compactification  $X$ . We view  $D_0$  as the base of the tangent cone  $C_0$  (with respect to the polarization by  $\beta_0$ ), as well as the unique  $G$ -stable horospherical divisor inside  $X$  with open orbit  $G/H_0$ .

Since the tangent cone does not depend on the chosen valuation inside the Weyl chamber [Ngh23], one can take  $\beta_0 = \alpha_1 + \alpha_2$ . Thanks to [BP87, Théorème 3.6], we can determine the combinatorial data of the homogeneous horospherical space  $G/H_0$  in terms of the data of  $G/H$ . The combinatorial data of the open orbit  $G/H_0 \times \mathbb{C}^*$  inside  $C_0$  then easily follows.

**Lemma 3.7.** *Suppose that  $\mathcal{M}(G/H) = \mathbb{Z} \langle \omega_1, \omega_2 \rangle$ , where  $\omega_{1,2}$  are the restricted fundamental weights of  $G/H$  with respect to Convention 2.1. Then*

- The lattice  $\mathcal{M}_0$  of  $G/H_0$  corresponds to  $\mathbb{Z}(\omega_1 - \omega_2)$ . In particular,  $\mathcal{N}_0 = \mathbb{Z} \frac{\alpha_1^\vee - \alpha_2^\vee}{2}$ .
- The subset  $I$  that determines  $G/H_0$  is the set  $\left\{ \hat{\alpha} \in \hat{S}, \hat{\alpha} = \theta(\hat{\alpha}) \right\}$ . In particular, the roots in  $I$  correspond to the black nodes in the Satake diagram of  $G/H$ .

*Proof.* If  $\beta_0 = \alpha_1 + \alpha_2$  generates the ray corresponding to  $D_0$  in the colored fan of  $X$ , then  $\mathcal{M}_0 = \beta_0^\perp \cap \mathcal{M}$ . Hence  $\mathcal{M}_0 = \mathbb{Z}(\omega_1 - \omega_2)$ .

Since the left-stabilizer of the open Borel orbit of  $G/H$  is the same as that of  $G/H_0$  [BP87],  $\hat{S} \setminus I$  consists of positive simple roots  $\hat{\alpha}$  such that  $\hat{\alpha} \neq \theta(\hat{\alpha})$  in the Cartan algebra, hence  $I$  consists of the black nodes in the Satake diagram of  $G/H$ .  $\square$

A spherical Fano cone has smooth link iff it is smooth outside the unique fixed point  $\{0\}$  of  $G$ . Since the cone  $C_0 \setminus \{0\}$  consists of two rank one simple embeddings, it is enough to show that one of the embeddings is singular via their combinatorial data.

**Lemma 3.8.** *The colored cones associated to the rank one simple embeddings in  $C_0 \setminus \{0\}$  are  $(\mathcal{C}_i, \mathcal{F}_i), i = 1, 2$ , where  $\mathcal{C}_i = \mathbb{R}_{\geq 0} \alpha_i^\vee, \mathcal{F}_i = \left\{ D_{\hat{\alpha}}, \hat{\alpha} \in \hat{S}, \hat{\alpha} - \theta(\hat{\alpha}) = \alpha_i \right\}$ .*

*The couple of simple roots associated to each rank one embedding of  $C_0 \setminus \{0\}$  is*

$$J_{\mathcal{F}_i} = \left\{ \hat{\alpha} \in \hat{S} \setminus I, \hat{\alpha} - \theta(\hat{\alpha}) = \alpha_i \right\}, \quad I_i = \hat{S} \setminus J_{\mathcal{F}_i}, \quad i = 1, 2.$$

*In particular,  $J_{\mathcal{F}_i}$  corresponds to the white nodes in the Satake diagram that restrict to the simple restricted root  $\alpha_i$ . The graphs  $\Gamma_{I_i \cup J_{\mathcal{F}_i}}$  of the pairs  $(I_i, J_{\mathcal{F}_i})$  of the indecomposable spaces are summarized in Table 3.*

*Proof.* Following [Ngh23], the support of the colored cone of  $C_0$  is the convex cone generated by  $\alpha_{1,2}^\vee$  and the colors of  $C_0$  are in bijection with  $\hat{S} \setminus I$ . The rank one embeddings in  $C_0 \setminus \{0\}$  then correspond to the two one-dimensional colored cones  $(\mathcal{C}_i, \mathcal{F}_i), i = 1, 2$  by the orbit-cone correspondence. Since the embeddings are themselves horospherical cones, it follows from Theorem 2.3 and definition of  $J_{\mathcal{F}_i}$  that  $I_i = \hat{S} \setminus J_{\mathcal{F}_i}$ .  $\square$

**Proposition 3.9.** *All the candidates for horospherical tangent cones at infinity of the rank two symmetric spaces are singular. Moreover, the tangent cones at infinity of the decomposable ones are product of the Stenzel asymptotic cones on each factor.*

*Proof.* From Table 3 and Pasquier’s criterion, it is straightforward to see that the only tangent cones with both couples  $(I_i, J_{\mathcal{F}_i}), i = 1, 2$  being smooth are the horospherical tangent cones of the symmetric spaces of involution type  $AI$  and  $A_2$ .

In these cases, suppose that our symmetric space has maximal weight lattice  $\mathbb{Z}\langle\omega_1, \omega_2\rangle$ . Since  $\theta(\alpha_1) = -\alpha_1$ , we have  $\alpha_1^\vee = \widehat{\alpha}_1^\vee/2$  (see [Vus90, Section 2.3], or [Del20b, Definition 1.22]), so  $\omega_1 = 2\widehat{\omega}_1$ . But  $\sigma(D_{\widehat{\alpha}_1}) = \widehat{\alpha}_1^\vee|_{\mathcal{M}_0} = 2\alpha_1^\vee|_{\mathcal{M}_0}$ , hence  $\sigma(D_{\widehat{\alpha}_1})(\omega_1 - \omega_2) = 2$ , so  $\mathcal{C}_1$  is not generated by  $\sigma(D_{\widehat{\alpha}_1})$ , i.e. the cone is not locally factorial. The same argument applies for symmetric spaces whose weight lattice is an integer multiple of  $\mathbb{Z}\langle\omega_1, \omega_2\rangle$ .

The same reasoning as in Lemma 3.7 and the fact that  $I = \widehat{S}\setminus J$  for a horospherical cone implies that the graph  $\Gamma_{I\cup J}$  of the Stenzel asymptotic cone is exactly the Dynkin diagram of the symmetric space with  $(I, J)$  being (black nodes, white nodes) in the Satake diagram. It follows that every Stenzel asymptotic cone has a unique singularity since the graph of each space is not smooth, except for the  $A_1$  case where  $r$  is odd (cf. Table 1). But the cone is not locally factorial in this case by the same reasoning as above.

Finally, the asymptotic cones of the *decomposable symmetric spaces* have in fact the same  $K$ -stable Reeb vector as that of the product of the Stenzel asymptotic cones (cf. Theorem 4.2). The vector degenerates the decomposable symmetric space to the product cone, which is singular as a product of two cones with an isolated singularity. This terminates our proof.  $\square$

#### 4. THE HOROSPHERICAL CALABI ANSATZ

**4.1. Horospherical cones.** We recall briefly the setting in [Ngh23]. The colored cone  $(\mathcal{C}, \mathcal{D})$  of a horospherical cone in the orbit-cone correspondence consists of a cone  $\mathcal{C}$  of maximal dimension, and a set  $\mathcal{D}$  containing all the colors of the open  $G$ -orbit. Let  $Q$  be the left-stabilizer of the open Borel-orbit with Levi decomposition

$$Q = Q^u L$$

and  $\widehat{R}_{Q^u} = \widehat{R}_Q \setminus \widehat{R}_L$  be the set of “unipotent” roots in  $Q$ . The Duistermaat-Heckman polynomial of the cone is defined as

$$P_{DH}(p) = \prod_{\widehat{\alpha} \in \widehat{R}_{Q^u}} \langle \widehat{\alpha}, p \rangle.$$

**Theorem 4.1.** [Ngh23] *Let  $C$  be an  $n$ -dimensional  $\mathbb{Q}$ -Gorenstein  $G$ -horospherical cone of rank  $k$  and  $\xi$  a Reeb vector polarizing  $C$ . Then the following are equivalent*

- $C$  admits a  $K$ -invariant conical Calabi-Yau metric compatible with  $\xi$ .
- $(C, \xi)$  is  $K$ -semistable.
- $(C, \xi)$  is  $K$ -stable.
- The real Monge-Ampère equation

$$\det(d^2v)P_{DH}(dv) = e^\varpi, \quad \overline{\partial v(\mathbb{R}^r)} = C^\vee$$

*admits a positive strictly convex smooth solution  $v$  such that  $v(x+t\xi) = v(x)$ . Here  $\varpi$  is the canonical linear function on  $C$  determined by the  $\mathbb{Q}$ -Gorenstein condition.*

Type	$R$	$(I_1, J_{\mathcal{F}_1}), (I_2, J_{\mathcal{F}_2})$
$AI$	$A_2$	
$A_2$	—	
$AIII$	—	
$EIV$	—	
$AIIIa$	$BC_2$	
$CIIa$	—	
$DIIIa$	—	
$EIII$	—	
$BDI$	$B_2$	
$AIIIb$	—	
$DIIIb$	—	
$B_2$	—	
$CIIb$	—	
$G$	$G_2$	
$G_2$	—	

TABLE 3. Graph data of  $C_0 \setminus \{0\}$ . Here  $I_i = I \cup \{\text{crossed nodes}\}$  where  $I$  is the set of black nodes in the Satake diagram, and  $J_{\mathcal{F}_i}$  is one (pair) of the non-crossed white nodes.

Furthermore, a  $\mathbb{Q}$ -Gorenstein  $G$ -horospherical cone is always  $K$ -stable, i.e. there is always the choice of a Reeb vector such that

$$\text{bar}_{DH}(\Delta_\xi) = \varpi,$$

where  $\Delta_\xi$  is the polytope  $\mathcal{C} \cap \{\langle \varpi, \xi \rangle = n\}$ , and  $\text{bar}_{DH}$  is the barycenter of  $\Delta_\xi$  with respect to  $P_{DH}$ .

Horospherical cones appear as a model at infinity of a symmetric space  $G/H$  when we degenerate  $G/H$  along a direction in the interior of the Weyl chamber. In fact, we can compute the (normalized) Reeb vector of the horospherical cone in terms of

the combinatorial data on the symmetric spaces. For example, the Reeb cone  $\mathcal{C}_R$  of  $C_0$  can be identified with the cone generated by the restricted simple roots of  $G/H$  (in particular  $\mathcal{C}_R^\vee$  is the Weyl chamber).

In the rank-two situation, let  $\xi \in \mathcal{C}_R$  be a Reeb vector and  $\delta = \alpha_2 - t\alpha_1, t > 0$  such that  $\langle \delta, \xi \rangle = 0$ . Note that  $P_{DH}|_{\mathfrak{a}} = P$  (up to a positive constant factor), since  $\widehat{R}_{Q^u} = \widehat{R}^+ \setminus \widehat{R}^\theta$ .

**Theorem 4.2.** [Ngh23]

- The horospherical cone  $C_0$  is Gorenstein, hence has canonical singularities by [Pas17, Prop. 6.1].
- If  $G/H$  is a rank two symmetric space, the Reeb vector  $\xi$  defines a conical Calabi-Yau metric on  $C_0$  if and only if  $t$  is a positive solution of

$$\int_{\lambda_-}^{\lambda_+} pP(\varpi + p\delta)dp = 0,$$

where  $P$  is the Duistermaat-Heckman polynomial of the symmetric space, and

$$\lambda_- = -\frac{\langle \alpha_2, \varpi \rangle}{\langle \alpha_2, \delta \rangle} < 0, \quad \lambda_+ = -\frac{\langle \alpha_1, \varpi \rangle}{\langle \alpha_1, \delta \rangle} > 0$$

are the intersections with  $\tilde{\alpha}_1, \tilde{\alpha}_2$  of the line passing through  $\varpi$  and parallel to  $\delta$ .

- The K-stable Reeb vector of a horospherical degeneration arising from non- $G_2$  symmetric spaces of rank two lies in the interior of the restricted Weyl chamber, and outside the Weyl chamber while being irregular for the  $G_2$ -symmetric spaces.

*Proof.* The first two points are already contained in [Ngh23]. The last point was proved in [Ngh23] for all the finite families of non- $G_2$  indecomposable symmetric spaces, while for the infinite families it follows from a continuity argument. Indeed, the function  $\xi \rightarrow \text{bar}_{DH}(\Delta_\xi)$  is continuous and its value lies on different positive sides of  $\varpi$  when  $\xi = \tilde{\alpha}_1, \tilde{\alpha}_2$  by [BD19], hence there is a  $\xi_0$  in the interior of the Weyl chamber such that  $\text{bar}_{DH}(\Delta_{\xi_0}) = \varpi$ .

The setup is almost the same for the decomposable cases and  $G_2$ -symmetric spaces. A quick way to show that the vector is always rational and lies in the interior of the Weyl chamber in the  $R_1 \times R_1$ -cases is to use uniqueness of the volume minimizer in [Ngh23]. In fact, the K-stable Reeb vector is *exactly* the product of two K-stable Reeb vectors on each factor of the root system. Indeed, recall that the normalized volume formula in [Ngh23] is

$$\text{vol}_{DH}(\xi) = \int_{\mathcal{C}_R^\vee} e^{-\langle p, \xi \rangle} P_{DH}(p) d\lambda(p).$$

From this formula and the fact that the polynomial  $P_{DH}$  on  $R_1 \times R_1$  is the product of  $P_{DH_i}$  on each factor of the root system, it follows easily that if  $\xi = \xi_1 + \xi_2$  where  $\xi_i$  is the Reeb vector of the factor  $i \in 1, 2$ , then  $\text{vol}_{DH}(\xi) = \text{vol}_{DH_1}(\xi_1) \text{vol}_{DH_2}(\xi_2)$ . Hence  $\xi$  minimizes  $\text{vol}_{DH}$  iff  $\xi_i$  minimizes  $\text{vol}_{DH_i}$ , i.e.  $\xi_i = (m_i + \widehat{m}_i + 1)/(m_i + 2\widehat{m}_i)\omega_i^\vee$  by the proof of Theorem 1.4.

Let us now show that the K-stable Reeb vector lies outside of the positive Weyl chamber in the  $G_2$ -cases. The positive roots are  $\alpha_1, \alpha_2, \alpha_1 + \alpha_2, 2\alpha_1 + \alpha_2, 3\alpha_1 + 2\alpha_2, 3\alpha_1 + \alpha_2$  with multiplicities all equal to  $m = 1$  or  $m = 2$  and  $\langle \alpha_1, \alpha_1 \rangle =, \langle \alpha_2, \alpha_2 \rangle = 1, \langle \alpha_1, \alpha_2 \rangle = 3, \langle \alpha_1, \alpha_2 \rangle = -3/2$ . The data of the problem is then  $\varpi = 10m\alpha_1 + 6m\alpha_2,$

$$\lambda_+ = \frac{2m}{2t+3}, \quad \lambda_- = -\frac{2m}{t+2},$$

and

$$P(p) = (2m - (2t + 3)p)^m (6m + (3t + 6)p)^m (8m + (t + 3)p)^m \\ (10m - tp)^m (12m - (3t + 3)p)^m (18 + 3p)^m.$$

For  $m = 1$  and  $m = 2$ , the polynomial equations obtained from the K-stability condition are respectively

$$2376 + 9225t + 13407t^2 + 9357t^3 + 3179t^4 + 424t^5 = 0,$$

and

$$20558772 + 134444448t + 374274594t^2 + 590688162t^3 + 587394519t^4 + \\ 383740299t^5 + 165293858t^6 + 45384306t^7 + 7221048t^8 + 507988t^9 = 0.$$

It is obvious that both equations have no positive solution since all the coefficients are positive. Finally, one can show that there is no rational solution in both cases by using the rational root theorem.  $\square$

**4.2. The ansatz and its Ricci potential.** We now let  $\beta$  be a direction *in the interior* of the Weyl chamber. Let

$$\delta := \alpha_2 - t\alpha_1$$

be such that  $\langle \beta, \delta \rangle = 0$  and  $\langle \delta, \alpha_1 \rangle < 0$ . Define

$$b = \frac{\langle \varpi, \beta \rangle}{n \langle \beta, \beta \rangle}, \quad d = \frac{\langle \varpi, \delta \rangle}{n \langle \delta, \delta \rangle}$$

where  $n$  is the dimension of the symmetric space.

**Ansatz 4.3.** Consider the Calabi ansatz

$$\rho^{(0)} = \exp(\varphi), \quad \varphi = b\beta + \psi(\delta).$$

Here  $\psi$  is a function defined in such a way that the function

$$u = n\psi(\delta) - \frac{\langle \varpi, \delta \rangle}{\langle \delta, \delta \rangle} \delta + \log(b^2 2^{n-2} n^{1-n}) = n\psi(\delta) - nd\delta + \log(b^2 2^{n-2} n^{1-n})$$

satisfies:

$$(8) \quad u'' > 0, \quad u'(\mathbb{R}) = ]\lambda_-, \lambda_+[ , \quad u''P(u') = e^{-u}.$$

**Remark 4.4.**

- Note that  $n\varphi = u + \varpi$  up to a constant. The choice of  $\rho^{(0)}$  is justified by the solution of the conical Monge-Ampère equation in [Ngh23], where we make the change of variable  $v = e^{u+\varpi}$  to reduce the equation to an analog of the Kähler-Einstein problem on Fano horospherical varieties.
- By Remark 3.1, we can view  $\rho^{(0)}$  as the locally bounded conical Calabi-Yau potential restricted on  $\mathfrak{a}$ , while  $\psi$  can be interpreted as the (singular) Kähler-Einstein potential of a Fano variety when the tangent cone is regular, or a transverse Kähler-Einstein potential in the irregular case.

We now verify that  $\rho^{(0)}$  is an asymptotic solution to the Ricci-flat equation on the generic region. We have

$$d\rho^{(0)} = \rho^{(0)} d\varphi = \rho^{(0)} (b\beta + \psi'(\delta)\delta)$$

This implies:

$$d^2\rho^{(0)} = \rho^{(0)} (d^2\varphi + d\varphi \otimes d\varphi) = \rho^{(0)} (\psi''(\delta) + \psi'(\delta)^2)\delta \otimes \delta + b^2\beta \otimes \beta \\ + b\psi'(\delta)(\beta \otimes \delta + \delta \otimes \beta).$$

hence by using  $n = 2 + \sum_{\alpha \in R^+} m_\alpha$ , and  $\varpi = \sum_{\alpha \in R^+} m_\alpha \alpha = nb\beta + nd\delta$ , we obtain

$$\begin{aligned} \det(d^2\rho^{(0)}) \prod_{\alpha \in \Phi^+} \langle \alpha, d\rho^{(0)} \rangle^{m_\alpha} &= (\rho^{(0)})^n b^2 \psi''(\delta) \prod_{\alpha \in R^+} \langle \alpha, b\beta + \psi'(\delta)\delta \rangle^{m_\alpha} \\ &= b^2 \exp(nb\beta - \log(b^2 2^{n-2}) + nd\delta) \\ &= \prod_{\alpha \in R^+} \left(\frac{e^\alpha}{2}\right)^{m_\alpha} = \prod_{\alpha \in \Phi^+} \sinh(\alpha)^{m_\alpha} \prod_{\alpha \in R^+} (1 - e^{-2\alpha})^{-m_\alpha} \end{aligned}$$

It follows that  $\rho^{(0)}$  is an asymptotic solution to the Ricci-flat equation in the generic region. Indeed, consider the Ricci potential

$$(9) \quad \mathcal{P}(\rho^{(0)}) = \ln \det(d^2\rho^{(0)}) + \sum_{\alpha \in R_+} m_\alpha (\ln \langle \alpha, d\rho^{(0)} \rangle - \ln \sinh \alpha).$$

When  $\alpha_2 \gg \alpha_1$ , resp.  $\alpha_1 \gg \alpha_2$  (so that  $\beta \sim \alpha_2 \gg \alpha_1$ , resp.  $\beta \sim \alpha_1 \gg \alpha_2$ ), we have

$$(10) \quad \mathcal{P}(\rho^{(0)}) = \ln(1 + O(e^{-2\alpha_2})), \quad \text{resp. } \mathcal{P}(\rho^{(0)}) = \ln(1 + O(e^{-2\alpha_1})),$$

while on the region  $\beta \sim \alpha_2 \sim \alpha_1 \gg 1$ ,

$$(11) \quad \mathcal{P}(\rho^{(0)}) = \ln(1 + O(e^{-2\beta})).$$

It follows that on the generic region

$$\mathcal{P}(\rho^{(0)}) = O(e^{-2\beta}),$$

and the same holds for all derivatives. Let  $r$  be the radius of the cone metric on  $C_0$  so that  $r^2$  restricts to  $\rho^{(0)} = e^{b\beta + \psi(\delta)}$  on the open orbit of  $C_0$ . Since  $\psi(\delta)$  is bounded for  $\alpha_2 \sim \alpha_1$ , we have  $e^{-2\beta} \sim r^{-4/b}$  outside of a compact subset of  $G/H$ , hence on the generic region

$$(12) \quad \left| \mathcal{P}(\rho^{(0)}) \right| \leq r^{-4/b}.$$

Using Table 5, one can easily check that  $4/b > 2$ , hence  $\rho^{(0)}$  has faster than quadratic decay in the generic region. We will later glue this asymptotic solution with two potentials in the direction of  $D_1$  and  $D_2$  in such a manner that the Ricci potential still behaves well in a neighborhood of the infinity direction near  $D_1, D_2$ . To justify the choice of the model near  $D_1, D_2$ , we first need to study the asymptotic behavior of the Calabi ansatz.

**4.3. Asymptotic behavior of the transverse potential.** Consider two real numbers  $\lambda_- < 0 < \lambda_+$  and a one-variable polynomial  $P$  which is positive on  $]\lambda_-, \lambda_+[$  and vanishes on  $\lambda_\pm$  with multiplicities  $m_\pm$ .

**Theorem 4.5.** *Let  $u : \mathbb{R} \rightarrow \mathbb{R}$  be a strictly convex smooth positive function such that*

$$u''P(u') = e^{-u}, \quad u'(\mathbb{R}) = ]\lambda_-, \lambda_+[$$

and  $\delta_- < 0 < \delta_+$  be the constants defined by

$$\delta_\pm = \frac{\lambda_\pm}{m_\pm + 1}.$$

Then there exist two sequences  $(C_j^\pm)_{j \in \mathbb{N}}$  such that

$$(13) \quad u(x) = \lambda_\pm x + C_0^\pm + \sum_{j=1}^m C_j^\pm e^{-j\delta_\pm x} + o\left(e^{-m\delta_\pm x}\right)$$

when  $x \rightarrow \pm\infty$ .



*Proof.* Let  $u^*(p) := \sup_{x \in \mathbb{R}}(xp - u(x))$  be the Legendre transform of  $u$ . Since  $u$  is smooth and that  $u'(\mathbb{R}) = ]\lambda_-, \lambda_+[$ , we have  $\text{dom}(u^*) = ]\lambda_-, \lambda_+[$ . Moreover,  $\lambda_+x - u(x)$  (resp.  $\lambda_-x - u(x)$ ) is a strictly increasing (resp. strictly decreasing) function, hence

$$\lim_{x \rightarrow \pm\infty} (\lambda_{\pm}x - u(x)) = \lim_{p \rightarrow \lambda_{\pm}} u^*(p).$$

By [Ngh23, Lemma 3.22], the solution  $u$  actually satisfies  $\|u^*\|_{L^\infty(] \lambda_-, \lambda_+])} < +\infty$ . Therefore

$$C_0^\pm := \lim_{x \rightarrow \pm\infty} (\lambda_{\pm}x - u(x)) < \infty.$$

We thus obtain the first two terms in the expansion of  $u$  near  $\pm\infty$ . Suppose that we have an expansion of  $u$  at order  $N$ . The goal is to obtain an expansion at order  $N + 1$ . We have

$$e^{-u(x)} = e^{-\lambda_{\pm}x} \left( \sum_{j=0}^N C_j^{\pm, (0)} e^{-j\delta_{\pm}x} + o\left(e^{-N\delta_{\pm}x}\right) \right)$$

where  $C_j^{\pm, (0)} = e^{C_j^\pm + 1}$ . We only consider the behavior of  $u$  near  $+\infty$  since the reasoning is the same near  $-\infty$ . Integrating the equation we obtain

$$(14) \quad \int_x^{+\infty} u''(t)P(u'(t))dt = e^{-\lambda_+x} \left( \sum_{j=0}^N C_j^{+, (1)} e^{-j\delta_+x} + o\left(e^{-N\delta_+x}\right) \right)$$

where  $C_j^{+, (1)} = \frac{C_j^{+, (0)}}{\lambda_+ + j\delta_+}$ . Let  $Q$  be a primitive of  $P$ . We then have  $\int_x^{+\infty} u''(t)P(u'(t))dt = \int_{u'(x)}^{\lambda_+} P(p)dp = Q(\lambda_+) - Q(u'(x))$ . Since  $(-1)^{m_+}P^{m_+}(\lambda_+) > 0$ , the following function

$$F(w) := \left( \frac{(m_+ + 1)!(Q(\lambda_+) - Q(\lambda_+ - w))}{(-1)^{m_+}P^{m_+}(\lambda_+)} \right)^{1/(m_+ + 1)}$$

is a well-defined analytic function and admits an analytic development of arbitrary order with  $F'(0) > 0$ . In particular  $F$  is invertible and the inverse of  $F$  is also analytic in a neighborhood of 0. From the previous expansion, it follows that

$$F(\lambda_+ - u'(x)) = C_0^{+, (2)} e^{-\delta_+x} \left( 1 + \sum_{j=1}^N C_j^{+, (2)} e^{-j\delta_+x} + o(e^{-N\delta_+x}) \right)$$

where  $C_0^{+, (2)} = (C_0^{+, (1)})^{1/(m_+ + 1)}$  and  $C_j^{+, (2)} = \frac{C_j^{+, (1)}}{m_+ + 1}$ . Applying the inverse function of  $F$  onto the above expression yields an asymptotic expression of  $u'$  to the order  $N$ , hence of  $u$  to the order  $N + 1$  near  $+\infty$ .  $\square$

As an immediate corollary, the transverse potential  $\psi(x)$  admits the asymptotic expansion

$$(15) \quad \psi(x) = \left( d + \frac{\lambda_{\pm}}{n} \right) x + K_0^\pm + \sum_{j=1}^m K_j^\pm e^{-j\delta_{\pm}x} + o(e^{-m\delta_{\pm}x}),$$

where

$$K_0^\pm = \frac{C_0^\pm - \log(b^2 2^{n-2} n^{1-n})}{n}, \quad K_j^\pm = \frac{C_j^\pm}{n}, \quad j \geq 1.$$

## 5. CONSTRUCTION OF THE GLOBAL ASYMPTOTIC SOLUTION

**5.1. Asymptotic of the Calabi ansatz near the boundary divisors.** View  $G/H$  as an open orbit inside the compactification  $\tilde{X}$ . Let  $D_1, D_2$  be the two boundary divisors corresponding to the rays  $\tilde{\alpha}_1, \tilde{\alpha}_2$ . By an abuse of notation, we use  $(\tilde{\alpha}_1, \alpha_2)$  (resp.  $(\tilde{\alpha}_2, \alpha_1)$ ) as coordinates of  $\mathbb{C}^* \times G/H_1$  (resp.  $\mathbb{C} \times G/H_2$ ).

Let  $b_1^\pm := (d + \lambda_\pm/n)$ ,  $a_0^\pm$  be constants such that

$$a_0^+ \tilde{\alpha}_2 = b\beta + b_1^+ \delta, \quad a_0^- \tilde{\alpha}_1 = b\beta + b_1^- \delta.$$

Recall that

$$\rho^{(0)} = \exp(b\beta + \psi(\delta)),$$

where  $\delta = \alpha_2 - t\alpha_1$ . Formally, there exist two sequences  $(K_j^\pm)_{j \in \mathbb{N}}$  such that

$$\rho^{(0)} = \exp(b\beta + b_1^\pm \delta + K_0^\pm) \exp \sum K_j^\pm e^{-j\delta_\pm(\alpha_2 - t\alpha_1)},$$

when  $\delta \rightarrow \pm\infty$ .

By the asymptotic behavior (15) of  $\psi$ , if  $\alpha_2 \ll \alpha_1$  and  $\alpha_1 \rightarrow +\infty$  (hence  $\delta \rightarrow -\infty$ ), then

$$\begin{aligned} \rho^{(0)} &\sim e^{b\beta + b_1^- \delta + K_0^-} \exp \sum_{j \geq 1} c_j^- e^{-a_j^- \alpha_1} \\ &\sim e^{b\beta + b_1^- \delta + K_0^-} \left(1 + \sum_{j \geq 1} c_j^- e^{-a_j^- \alpha_1}\right). \end{aligned}$$

Here  $c_j^- := K_j^- e^{j\delta - \alpha_2}$  and  $a_j^- = -tj\delta_-$ . Similarly, when  $\alpha_1 \ll \alpha_2$  and  $\alpha_2 \rightarrow +\infty$  (so that  $\delta \rightarrow +\infty$ ),

$$\rho^{(0)} \sim e^{b\beta + b_1^+ \delta + K_0^+} \exp \sum_{j \geq 1} c_j^+ e^{-a_j^+ \alpha_2}$$

where  $c_j^+ := K_j^+ e^{-j\delta + \alpha_1}$  and  $a_j^+ = j\delta_+ > 0$ .

Thus we see that the first order asymptotic behavior of  $\rho^{(0)}$  near  $D_2$  and  $D_1$  is of the form

$$(16) \quad e^{K_0^\pm + a_0^\pm \tilde{\alpha}_{2,1}} \left(1 + \sum_{j \geq 1} c_j^\pm e^{-a_j^\pm \alpha_{2,1}}\right).$$

**5.2. Construction of the boundary potentials.** The first step is to provide good initial ansätze  $\rho_1^{(1)}, \rho_1^{(2)}$  near  $D_1, D_2$  based on the asymptotic (16). Let  $w$  be the Stenzel potential on the symmetric fiber of, say,  $G/H_2$ , which satisfies

$$(17) \quad Aw''(x)(w'(x))^{m_{\alpha_1} + m_{2\alpha_1}} = \sinh^{m_{\alpha_1}}(x) \sinh^{m_{2\alpha_1}}(x),$$

where  $A$  is a constant chosen so that the solution of the ODE has an expansion when  $\alpha_1 \rightarrow \infty$  of the form

$$(18) \quad w(\alpha_1) = K_1^+ e^{a_1^+ \zeta_2 \alpha_1} \left(1 + \sum_{k \geq 1} w_k e^{-2k\alpha_1}\right),$$

where the constant  $K_1^+$  is exactly the constant in the asymptotic expansion (15) of the transverse potential  $\psi$ . One can indeed always make such choice of  $A$ , see Proposition 2.11. Note that the constant  $\zeta_2$  appears due to the choice of coordinates on the Cartan algebra. We also have a similar potential near  $D_1$  after replacing  $K_1^+, a_1^+, \zeta_2$  by  $K_1^-, a_1^-, \zeta_1$ .

**Ansatz 5.1.** Define the following warped product of AC metrics

$$(19) \quad \rho_1^{(2)} := e^{K_0^+ + a_0^+ \tilde{\alpha}_2} \left( 1 + e^{-a_1^+ \tilde{\alpha}_2} w(\alpha_1) \right)$$

where  $e^{a_0^+ \tilde{\alpha}_2}$  is the potential of the metric  $dd^c |z|^{2a_0^+}$  with  $\tilde{\alpha}_2 = \log |z|^2$  on  $\mathbb{C}$ , and  $w$  is the Stenzel potential on the open orbit  $G/H_2$  of  $D_2$ .

Let us give a brief explanation on this choice. Suppose that we have some hypothetical global potential  $\rho$  on  $G/H$  that coincides with  $\rho^{(0)}$  in the generic region. We would then like  $\rho$  to behave like  $\rho^{(0)}$  at the first order near  $D_1, D_2$ , i.e.

$$\rho \sim e^{K_0^+ + a_0^+ \tilde{\alpha}_2} \left( 1 + \sum_{j \geq 1} r_j^+ e^{-a_j^+ \alpha_2} \right)$$

at the first order near  $D_2$  (and similarly near  $D_1$ ), cf. (16). We would also like  $\rho$  to be translated in terms of the coordinates  $(\tilde{\alpha}_2, \alpha_1)$  on  $\mathbb{C}^* \times G/H_2$ . This suggests we rewrite each term  $r_j^+ e^{-a_j^+ \alpha_2}$  as  $r_j^+ e^{-a_j^+ \tilde{\alpha}_2} e^{a_1^+ \zeta_2 \alpha_1}$ , but the term  $r_j^+ e^{a_1^+ \zeta_2 \alpha_1}$  can be identified with the radius function of the Stenzel metric in (18). This somehow justifies the choice of Ansatz 5.1.

It turns out that the Ricci potential of this initial ansatz might not have the decay rate as we want, so the next step is to improve the decay rate of the Ricci-potential by adding on new terms to kill off the badly-decaying terms in  $\rho_1^{(2)}$ .

To be precise, as  $\alpha_2 \rightarrow +\infty$  and  $\alpha_1$  stays bounded,

$$\rho_1^{(2)} = e^{K_0^+ + a_0^+ \tilde{\alpha}_2} \left( 1 + e^{-a_1^+ \alpha_2} (r_1^+ + O(e^{-2\alpha_1})) \right), \quad r_1^+ := K_1^+.$$

The idea of Proposition 5.2 is to successively add terms of the form

$$e^{-a_k^+ \tilde{\alpha}_2} R_k(\alpha_1) = e^{-a_k^+ \alpha_2} (r_k^+ + O(e^{-2\alpha_1}))$$

such that  $R_k$  mimics the Stenzel behavior at each order but with improved Ricci-potential decay rate, and that the final first order term will have the form

$$e^{K_0^+ + a_0^+ \tilde{\alpha}_2} \left( 1 + \sum_k r_k^+ e^{-a_k^+ \alpha_2} \right),$$

which is built to be the same as the first order asymptotic behavior (16) of  $\rho^{(0)}$  near  $D_2$ , suggesting a consistency in some gluing region as we will see.

**Proposition 5.2.** *There is a potential  $\rho^{(2)}$  on  $\mathbb{C}^* \times G/H_2$  with asymptotic expansion as  $\alpha_2 \rightarrow \infty$*

$$\rho^{(2)} \sim e^{K_0^+ + a_0^+ \tilde{\alpha}_2} \left( 1 + \sum_k e^{-a_k^+ \tilde{\alpha}_2} R_k(\alpha_1) \right)$$

where

- $R_1 = w$  and for all  $k$ ,  $R_k$  is an even function of  $\alpha_1$  such that when  $\alpha_1 \rightarrow \infty$ ,  $R_k$  has Stenzel-like behavior, that is,

$$R_k(\alpha_1) = e^{a_k^+ \zeta_2 \alpha_1} (r_k^+ + O(e^{-2\alpha_1})),$$

where  $r_k^+ > 0$  and  $O(e^{-2\alpha_1})$  is a function whose all derivatives behave like  $O(e^{-2\alpha_1})$ ;

- $0 < a_1^+ < a_2^+ < \dots$  and  $a_i^+ \in a_1^+ \mathbb{N} + 2\mathbb{N}, \forall i \geq 2$ ;
- For every  $k \geq 1$ , the Ricci potential  $\mathcal{P}$  (cf. (4)) of the term  $\rho_k^{(2)}$  up to the  $k$ -th order satisfies

$$\left| \nabla^l \mathcal{P}(\rho_k^{(2)}) \right| \leq C_{k,l} e^{-a_k^+ \alpha_2}.$$

There is also an potential  $\rho^{(1)}$  on  $\mathbb{C}^* \times G/H_1$  with similar properties.

The proof of Proposition 5.2 can be carried out in the same manner as [BD19]. We detail the arguments for the reader's convenience. First we need the following lemma (see also [BD19, Prop. 5.1]).

**Lemma 5.3.** *Let  $L$  be the linearization of  $\mathcal{P}$  at  $\rho_1^{(2)}$ , i.e.*

$$(20) \quad L(f) := \text{tr}((d^2 \rho_1^{(2)})^{-1} d^2 f) + \sum_{\alpha \in \langle \alpha, d\rho_1^{(2)} \rangle} m_\alpha \frac{\langle \alpha, df \rangle}{\langle \alpha, d\rho_1^{(2)} \rangle}.$$

To simplify the expression, we drop the  $\pm$ -signs on the constants. Then as  $\alpha_2 \rightarrow \infty$ , we have asymptotically

$$(21) \quad \begin{aligned} L(f) &= \frac{1}{e^{K_1^+} e^{a_0 \tilde{\alpha}_2}} (e^{a_1 \tilde{\alpha}_2} \Delta_1 f + a_0^{-2} \partial_2^2 f + (n-1-d_1) a_0^{-1} (\partial_2 f) \\ &\quad + a_0^{-2} (a_0 - a_1)^2 \frac{w(\alpha_1)}{w''(\alpha_1)} \partial_1^2 f + \sum_{\alpha_1 \uparrow \alpha} a_0^{-1} (\partial_1 f) \frac{\langle \alpha, \alpha_1 \rangle}{\langle \alpha, \tilde{\alpha}_2 \rangle} \\ &\quad - 2a_0^{-2} (a_0 - a_1) \frac{w'(\alpha_1)}{w''(\alpha_1)} \partial_2 \partial_1 f \\ &\quad + O(e^{-a_1 \alpha_2} d^2 f) + O(e^{-a_1 \alpha_2} df)). \end{aligned}$$

where  $d_1 := \sum_{\alpha_1 | \alpha} \alpha$ ,

$$\Delta_1 f := \frac{\partial_1^2 f}{w''(\alpha_1)} + d_1 \frac{\partial_1 f}{w'(\alpha_1)},$$

and  $O(e^{-a_1 \alpha_2} d^2 f)$  with  $O(e^{-a_1 \alpha_2} df)$  are terms involving second and first derivatives of  $f$  with coefficients growing like  $O(e^{-a_1 \alpha_2})$  as  $\alpha_2 \rightarrow +\infty$ . We also have a similar expression when  $\alpha_1 \rightarrow \infty$ .

**Remark 5.4.** In [BD19], two terms involving the first and second derivatives of  $f$  were missing in the asymptotic formula for  $L$  (cf. Equation (32) in loc. cit.), but this doesn't alter the decay improvement, since the effect of the missing terms is asymptotically insignificant in the given direction.

*Proof.* To make the proof more readable, we remove the  $+$  sign in the constants. By definition of  $\rho_1^{(2)}$ , we have

$$(22) \quad d\rho_1^{(2)} = e^{K_1 + a_0 \tilde{\alpha}_2} \left( (a_0 + (a_0 - a_1)w(\alpha_1)e^{-a_1 \tilde{\alpha}_2}) \tilde{\alpha}_2 + w'(\alpha_1)e^{-a_1 \tilde{\alpha}_2} \alpha_1 \right).$$

It follows that

$$(23) \quad \begin{aligned} d^2 \rho_1^{(2)} &= e^{K_1 + a_0 \tilde{\alpha}_2} \left( (a_0^2 + (a_0 - a_1)^2 w(\alpha_1) e^{-a_1 \tilde{\alpha}_2}) \tilde{\alpha}_2 \otimes \tilde{\alpha}_2 \right. \\ &\quad + (a_0 - a_1) w'(\alpha_1) e^{(a_0 - a_1) \tilde{\alpha}_2} (\tilde{\alpha}_2 \otimes \alpha_1 + \alpha_1 \otimes \tilde{\alpha}_2) \\ &\quad \left. + w''(\alpha_1) e^{-a_1 \tilde{\alpha}_2} \alpha_1 \otimes \alpha_1 \right). \end{aligned}$$

A straightforward calculation then yields

$$(24) \quad \det(d^2 \rho_1^{(2)}) = e^{2K_1 + (2a_0 - a_1) \tilde{\alpha}_2} a_0^2 w''(\alpha_1) \left( 1 + a_0^{-2} (a_0 - a_1)^2 e^{-a_1 \tilde{\alpha}_2} \left( w(\alpha_1) - \frac{w'(\alpha_1)^2}{w''(\alpha_1)} \right) \right).$$

From the computation of  $d\rho_1^{(2)}$ , we obtain

$$(25) \quad \left\langle \alpha, d\rho_1^{(2)} \right\rangle = \begin{cases} e^{K_1} e^{(a_0 - a_1) \tilde{\alpha}_2} w'(\alpha_1) \langle \alpha, \alpha_1 \rangle, & \alpha_1 | \alpha, \\ e^{K_1 + a_0 \tilde{\alpha}_2} a_0 \langle \alpha, \tilde{\alpha}_2 \rangle \left( 1 + e^{-a_1 \tilde{\alpha}_2} \left( \frac{a_0 - a_1}{a_0} w(\alpha_1) + \frac{\langle \alpha, \alpha_1 \rangle}{a_0 \langle \alpha, \tilde{\alpha}_2 \rangle} w'(\alpha_1) \right) \right), & \alpha_1 \uparrow \alpha. \end{cases}$$

Now use  $\tilde{\alpha}_2, \alpha_1$  as the orthogonal basis of the dual Cartan algebra  $\mathfrak{a}^*$ , we can write  $df = \partial_2 f \tilde{\alpha}_2 + \partial_1 f \alpha_1$ , where  $\partial_1 f = \langle df, \alpha_1 \rangle / |\alpha_1|^2$ . Let us first compute the trace term of  $L$ . Note that as  $\alpha_2 \rightarrow +\infty$ ,

$$(26) \quad \det(d^2 \rho_1^{(2)})^{-1} = e^{-2K_1 - (2a_0 - a_1)\tilde{\alpha}_2} a_0^{-2} w''(\alpha_1)^{-1} (1 + O(e^{-a_1 \alpha_2})).$$

Letting  $A$  be the adjoint matrix of  $d^2 \rho_1^{(2)}$ , we obtain

$$(27) \quad \begin{aligned} \text{tr}(A d^2 f) &= e^{K_1 + a_0 \tilde{\alpha}_2} (e^{-a_1 \tilde{\alpha}_2} w''(\alpha_1) \partial_2^2 f - 2(a_0 - a_1) e^{-a_1 \tilde{\alpha}_2} w'(\alpha_1) \partial_2 \partial_1 f \\ &\quad + (a_0^2 + (a_0 - a_1)^2 e^{-a_1 \tilde{\alpha}_2} w(\alpha_1)) \partial_1^2 f). \end{aligned}$$

Now combining (26) and (27) gives us

$$(28) \quad \begin{aligned} \text{tr}((d^2 \rho_1^{(2)})^{-1} d^2 f) &= e^{-(K_1 + a_0 \tilde{\alpha}_2)} (a_0^{-2} \partial_2^2 f - 2a_0^{-2} (a_0 - a_1) \frac{w'(\alpha_1)}{w''(\alpha_1)} \partial_2 \partial_1 f \\ &\quad + e^{a_1 \tilde{\alpha}_2} \frac{\partial_1^2 f}{w''(\alpha_1)} + a_0^{-2} (a_0 - a_1)^2 w(\alpha_1) \frac{\partial_1^2 f}{w''(\alpha_1)} \\ &\quad + O(e^{-a_1 \alpha_2} d^2 f) + O(e^{-a_1 \alpha_2} df)). \end{aligned}$$

On the other hand, for the term involving roots, when  $\alpha_1 \mid \alpha$ , we have

$$\frac{\langle \alpha, df \rangle}{\langle \alpha, d\rho_1^{(2)} \rangle} = \frac{\partial_1 f}{w'(\alpha_1)} e^{-K_1} e^{-(a_0 - a_1)\tilde{\alpha}_2},$$

while if  $\alpha_1 \nmid \alpha$ ,

$$\frac{\langle \alpha, df \rangle}{\langle \alpha, d\rho_1^{(2)} \rangle} = \frac{(\partial_2 f) \langle \tilde{\alpha}_2, \alpha \rangle + (\partial_1 f) \langle \alpha, \alpha_1 \rangle}{e^{K_1 + a_0 \tilde{\alpha}_2} a_0 \langle \alpha, \tilde{\alpha}_2 \rangle (1 + e^{-a_1 \tilde{\alpha}_2} (\frac{a_0 - a_1}{a_0} w(\alpha_1) + \frac{\langle \alpha, \alpha_1 \rangle}{a_0 \langle \alpha, \tilde{\alpha}_2 \rangle} w'(\alpha_1)))}.$$

Summing up, we get

$$(29) \quad \begin{aligned} \sum_{\alpha \in R^+} \frac{\langle \alpha, df \rangle}{\langle \alpha, d\rho_1^{(2)} \rangle} &= e^{-(K_1 + a_0 \tilde{\alpha}_2)} (d_1 \frac{\partial_1 f}{w'(\alpha_1)} e^{a_1 \tilde{\alpha}_2} + (n - 1 - d_1) a_0^{-1} (\partial_2 f) \\ &\quad + \sum_{\alpha_1 \nmid \alpha} a_0^{-1} (\partial_1 f) \frac{\langle \alpha, \alpha_1 \rangle}{\langle \alpha, \tilde{\alpha}_2 \rangle} + O(e^{-a_1 \alpha_2} df)), \end{aligned}$$

where  $d_1 := \sum_{\alpha_1 \mid \alpha} \alpha$ . Putting together (28) and (29) gives us the desired asymptotic formula for  $L$ .  $\square$

*Proof of Proposition 5.2.* Denote by  $\mathcal{P}(\rho_1^{(2)})$  the Ricci potential of  $\rho_1^{(2)}$ . Define the algebra

$$\mathcal{A}_\delta = \left\{ \sum_{a_k \geq \delta} e^{-a_k \tilde{\alpha}_2} f_k(\alpha_1) \right\},$$

where  $f_k$  are some even functions satisfying when  $\alpha_1 \rightarrow \infty$

$$f_k(\alpha_1) = e^{a_k^+ \zeta \alpha_1} (A_k + O(e^{-2\alpha_1})),$$

and all the derivatives of  $f_k$  have the same expansion. Following (24), (25) and the asymptotic of the Stenzel potential (18), there is a formal power series

$$\mathcal{P}(\rho_1^{(2)}) = \sum_{a_k^+ \geq a_1^+} e^{-a_k^+ \tilde{\alpha}_2} f_k(\alpha_1) \in \mathcal{A}_{a_1^+}.$$

One would then like to construct a potential  $\rho_2^{(2)}$  whose Ricci potential has a better decay rate, i.e. such that

$$\mathcal{P}(\rho_2^{(2)}) \in \mathcal{A}_{a_2^+},$$

where  $a_2 = \inf(2a_1, 2)$ . This can be done by killing off the term that decays badly in  $\mathcal{P}(\rho_1^{(2)})$  with a small perturbation of  $\rho_1^{(2)}$ . The procedure is as follows. Let  $L$  be the linearization of  $\mathcal{P}$ . By Lemma 5.3, when  $\alpha_2 \rightarrow +\infty$  (that is, near  $D_2$ ), the leading order of  $L$  is given by

$$e^{-K_1^+} e^{(-a_0^+ + a_1^+) \tilde{\alpha}_2} \Delta_1,$$

where  $\Delta_1$  is the weighted Laplacian defined by

$$\Delta_1 = \frac{\partial_1^2}{w''(\alpha_1)} + d_1 \frac{\partial_1}{w'(\alpha_1)}.$$

Given a sufficiently small perturbation  $\rho_2^{(2)}$  of  $\rho_1^{(2)}$ , one has

$$\begin{aligned} \mathcal{P}(\rho_2^{(2)}) &= \mathcal{P}(\rho_1^{(2)}) + L(\rho_2^{(2)} - \rho_1^{(2)}) + Q \\ &= e^{-a_1^+ \tilde{\alpha}_2} g(\alpha_1) + h + L(\rho_2^{(2)} - \rho_1^{(2)}) + Q, \end{aligned}$$

where  $g$  is an even function satisfying  $g(\alpha_1) = e^{a_1^+ \zeta_2 \alpha_1} (A + O(e^{-2\alpha_1}))$ ,  $h \in \mathcal{A}_{a_2^+}$ , and  $Q$  is some non-linear term. In order to obtain  $\mathcal{P}(\rho_2^{(2)}) \in \mathcal{A}_{a_2^+}$  one then needs a potential  $\rho_2^{(2)}$  such that the term  $L(\rho_2^{(2)} - \rho_1^{(2)}) + e^{-a_1^+ \tilde{\alpha}_2} g$  is in  $\mathcal{A}_{a_2^+}$ . This can be done by first considering the equation

$$\Delta_1 f = g.$$

We view  $f, g$  as one-variable functions in the weighted spaces

$$C_\eta^k := \cosh(x)^\eta C^k(\mathbb{R}), \eta > 0, \text{ and } C_{\eta - \zeta_2 a_1^+}^k.$$

By surjectivity of  $\Delta_1$  [LM85], viewed as a linear operator

$$\Delta_1 : C_\eta^k \rightarrow C_{\eta - \zeta_2 a_1^+}^{k-2},$$

and the asymptotic behavior of  $g$ , the equation always admits a solution of the form  $f(\alpha_1) = e^{2a_1^+ \zeta_2 \alpha_1} (B + O(e^{-2\alpha_1}))$  (compare with the Stenzel potential  $w$ ). Next, by taking  $\rho_2^{(2)}$  as

$$\rho_2^{(2)} := \rho_1^{(2)} - e^{K_0^+} e^{(a_0^+ - 2a_1^+) \tilde{\alpha}_2} f(\alpha_1),$$

one obtains by straightforward computation using the asymptotic form (21) of  $L$

$$L(\rho_2^{(2)} - \rho_1^{(2)}) + e^{-a_1^+ \tilde{\alpha}_2} g(\alpha_1) \in \mathcal{A}_{a_2^+}, \text{ as } \alpha_2 \rightarrow \infty.$$

This is because applying the non-Laplacian term of  $L$  to  $e^{(a_0^+ - 2a_1^+) \tilde{\alpha}_2} f(\alpha_1)$  yields only function in  $\mathcal{A}_{a_2^+}$ . To sum up, we have killed the badly-decaying term  $g$  in  $\mathcal{P}(\rho_1^{(2)})$  by solving an explicit Laplacian equation, and obtained:

$$\mathcal{P}(\rho_2^{(2)}) \in \mathcal{A}_{a_2^+}.$$

A reiteration of the construction yields  $\rho_{k+1}^{(2)}$  from  $\rho_k^{(2)}$ . Finally, we obtain as  $\alpha_2 \gg \alpha_1$  and  $\alpha_1 \gg 1$

$$\rho^{(2)} \sim e^{K_0^+ + a_0^+ \tilde{\alpha}_2} \left( 1 + \sum_{j \geq 1} e^{-a_j^+ \alpha_2} (r_j^+ + O(e^{-2\alpha_1})) \right)$$

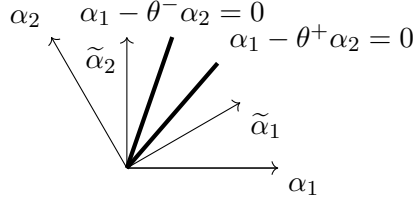


FIGURE 3. The pasting lines  $\alpha_1 - \theta^\pm \alpha_2 = 0$ . We impose the condition  $\theta^+ > \theta^- > 0$  so that the lines are distinct, and that they stay in the interior of the Weyl chamber. The larger (resp. smaller) is the  $\eta$  in  $\alpha_1 - \eta \alpha_2$ , the closer the line gets to the wall  $\tilde{\alpha}_1$  (resp.  $\tilde{\alpha}_2$ ).

with first order terms

$$e^{K_0^+ + a_0^+ \tilde{\alpha}_2} \left( 1 + \sum_{j \geq 1} r_j^+ e^{-a_j^+ \alpha_1} \right),$$

as formal series. This matches with the first order term of  $\rho^{(0)}$ . The construction of  $\rho^{(1)}$  is identical.  $\square$

**5.3. Global potential.** Before gluing the potentials, we need to verify that the top order terms of  $\rho^{(0)}$  and  $\rho^{(2)}, \rho^{(1)}$  coincide near the boundary regions. The potentials  $\rho^{(2)}, \rho^{(1)}$  can thus be interpreted somehow as expansions of  $\rho^{(0)}$  along the divisors.

By the computation carried out above, we have all the ingredients needed to reperform the arguments as in [BD19], and obtain:

**Lemma 5.5.** *The top order term of  $\rho^{(2)}$  coincides with  $\rho^{(0)}$  near the region  $\beta \sim \alpha_2 \gg 1$ , that is*

$$\exp \sum_{j \geq 1} c_j^+ e^{-a_j^+ \alpha_1} = 1 + \sum_j r_j^+ e^{-a_j^+ \alpha_1}$$

In particular,

$$\rho^{(0)} - \rho^{(2)} \sim e^{K_0^+ + a_0^+ \tilde{\alpha}_2} \sum_{k \geq 1} e^{-a_k^+ \alpha_2} g_k(\alpha_1),$$

where  $g_k(\alpha_1) = O(e^{-2\alpha_1})$ , i.e. a function such that all derivatives satisfy this asymptotic behavior. The same can be said for  $\rho^{(1)}$  in the region  $\beta \sim \alpha_1 \gg 1$ .

Next, we paste  $\rho^{(0)}$  with the boundary potentials  $\rho_k^{(2)}$  and  $\rho_k^{(1)}$  along the lines  $\alpha_1 - \theta^- \alpha_2 = 0$  and  $\alpha_1 - \theta^+ \alpha_2 = 0$ , where

$$k \in \mathbb{N}, \quad \theta^+ > \theta^- > 0$$

are to be chosen so that the Ricci potential of the final metric has the decay rate that we want. Note that here we abuse our notations by using  $\alpha_1, \alpha_2$  as *coordinates* rather than elements of the affine space  $\mathfrak{a}^*$ .

Let  $\gamma : \mathbb{R} \rightarrow \mathbb{R}$  be a smooth nondecreasing cutoff function with bounded derivatives such that  $\gamma(t) = 0$  if  $t \leq 0$  and  $\gamma(t) = 1$  if  $t \geq 1$  and define

$$(30) \quad \rho = (1 - \gamma(\alpha_1 - \theta^+ \alpha_2) - \gamma(\theta^- \alpha_2 - \alpha_1)) \rho^{(0)} + \gamma(\alpha_1 - \theta^+ \alpha_2) \rho_k^{(1)} + \gamma(\theta^- \alpha_2 - \alpha_1) \rho_k^{(2)}.$$

Clearly,

$$\rho = \begin{cases} \rho^{(0)}, & \theta^- \alpha_2 \leq \alpha_1 \leq \theta^+ \alpha_2, \\ \rho_k^{(1)}, & \alpha_1 - \theta^+ \alpha_2 \geq 1, \\ \rho_k^{(2)}, & \alpha_1 - \theta^- \alpha_2 \leq -1. \end{cases}$$

In particular, on the region  $0 \leq \alpha_1 - \theta^+ \alpha_2 \leq 1$ , we have

$$\rho = (1 - \gamma(\alpha_1 - \theta^+ \alpha_2))\rho^{(0)} + \gamma(\alpha_1 - \theta^+ \alpha_2)\rho_k^{(1)}.$$

Rewriting

$$\rho - \rho_k^{(1)} = (1 - \gamma(\alpha_1 - \theta^+ \alpha_2))(\rho^{(0)} - \rho_k^{(1)})$$

on this region, we obtain from the asymptotic expression of  $L$

$$L(\rho - \rho_k^{(1)}) = O(e^{-2\alpha_2} + e^{(a_1^- - a_{k+1}^-)\alpha_1}).$$

Similarly, when  $-1 \leq \alpha_1 - \theta^- \alpha_2 \leq 0$ , we have

$$\rho = (1 - \gamma(\theta^- \alpha_2 - \alpha_1))\rho^{(0)} + \gamma(\theta^- \alpha_2 - \alpha_1)\rho_k^{(2)},$$

and also

$$L(\rho - \rho_k^{(2)}) = O(e^{-2\alpha_1} + e^{(a_1^+ - a_{k+1}^+)\alpha_2}).$$

Since  $\mathcal{P}(\rho) \sim \mathcal{P}(\rho_k^{(i)}) + L(\rho - \rho_k^{(i)})$ , the asymptotic of  $\mathcal{P}(\rho_k^{(i)})$  in Proposition 5.2 and of  $L$  together yield

$$\mathcal{P}(\rho) = \begin{cases} O(e^{-2\alpha_2} + e^{(a_1^- - a_{k+1}^-)\alpha_1}), & 0 \leq \alpha_1 - \theta^+ \alpha_2 \leq 1, \\ O(e^{-2\alpha_1} + e^{(a_1^+ - a_{k+1}^+)\alpha_2}), & -1 \leq \alpha_1 - \theta^- \alpha_2 \leq 0. \end{cases}$$

Let us justify that our choice of  $\theta^\pm$  in Proposition 5.7 is a priori coherent.

**Lemma 5.6.** *For all symmetric spaces of rank two, we have*

$$\left(\frac{2}{a_0^-} - \zeta_1\right) \left(\frac{2}{a_0^+} - \zeta_2\right) > 1.$$

*In particular, we can always choose  $\theta^+ > \theta^-$  such that*

$$\frac{2}{a_0^-} - \zeta_1 > \theta^+ > \theta^- > \frac{1}{\frac{2}{a_0^+} - \zeta_2}.$$

*Proof.* Table 5 summarizes all the constants needed for the computation. In the  $R_1 \times R_1$  case, we have  $\zeta_1 = \zeta_2 = 0$ , hence the condition is equivalent to

$$a_0^- a_0^+ < 4,$$

which is satisfied since  $a_0^- = (m_1 + 2\widehat{m}_1)/(m_1 + \widehat{m}_1 + 1) < 2$ , and the same holds for  $a_0^+$ .

In the  $A_2$  case,  $\zeta_1 = \zeta_2 = 1/2$ , so it is enough to verify that

$$\frac{2}{a_0^-} - \frac{1}{2} > 1, \quad \frac{2}{a_0^+} - \frac{1}{2} > 1,$$

which translate to  $a_0^- < 4/3$  and  $a_0^+ < 4/3$ . Both conditions are equivalent to  $8m/3n < 4/3$ , which is true for all  $m$  and  $n$  in this case.

Let us now verify the condition in the  $BC_2/B_2$  cases, where  $\zeta_1 = 1/2$  and  $\zeta_2 = 1$ . Again, it is enough to check that  $2/a_0^- - 1/2 > 1$  and  $2/a_0^+ - 1 > 1$ , which translate to  $a_0^- < 4/3$  and  $a_0^+ < 1$ , that is

$$\frac{4m_2}{n} \frac{1+t}{2+t} + \frac{2m_1 + 4m_3}{n} < 4/3, \quad \frac{2m_2}{n} + \frac{m_1 + 2m_3}{n} \frac{2+t}{1+t} < 1,$$

or equivalently,

$$t > \frac{-2m_1 - 2m_2 + 4m_3 - 8}{5m_1 + 2m_2 + 2m_3 + 8}, \quad t > \frac{2m_3 - 2}{m_1 + 2}.$$

It is easy to check that the first condition is trivial in all cases, and the second condition is satisfied for  $m_3 = 0$  (i.e. for all the  $B_2$  cases) and for all the families of type  $BC_2$  with  $m_3 = 1$ .



It remains to check the condition

$$t > \frac{2m_3 - 2}{m_1 + 2}$$

for the infinite family  $(4r - 16, 4, 3)$  of type  $BC_2$ , i.e.  $t > 4/(4r - 14) = 2/(2r - 7)$ . It is enough to verify that  $t > 1$  for all  $r \geq 5$  in this family. This will be proved together with the bounded geometry condition in Lemma 7.5 since the proof idea is similar.  $\square$

**Proposition 5.7.** *If we take*

$$\frac{2}{a_0^-} - \zeta_1 > \theta^+ > \theta^- > \frac{1}{\frac{2}{a_0^+} - \zeta_2},$$

and  $k$  large enough so that

$$a_{k+1}^- - a_1^- > a_0^-(1 + \zeta_1/\theta^+), \quad a_{k+1}^+ - a_1^+ > a_0^+(1 + \theta^-\zeta_2),$$

then outside of a compact subset, we have for  $\varepsilon > 0$  small enough and for all  $l$

$$\left| \nabla^l \mathcal{P}(\rho) \right| \leq C_l e^{-(1+\varepsilon)\varphi},$$

where  $\varphi = b\beta + \psi(\delta)$ .

*Proof.* We already have such a control in the generic region  $\theta^-\alpha_2 \leq \alpha_1 \leq \theta^+\alpha_2$ , as well as in the two boundary regions where  $\alpha_1 \gg \alpha_2 \sim 1$ , resp.  $\alpha_2 \gg \alpha_1 \sim 1$ , cf. (12). We need to show that such a control persists in the regions  $0 \leq \alpha_1 - \theta^+\alpha_2 \leq 1$  and  $-1 \leq \alpha_1 - \theta^-\alpha_2 \leq 0$ .

We have when  $\alpha_1 \rightarrow +\infty$ ,  $\varphi = a_0^-\tilde{\alpha}_1 + O(1)$ , hence

(1) If  $\alpha_1 \leq \theta^+\alpha_2$ , then  $a_0^-\tilde{\alpha}_1 \leq a_0^-(\theta^+ + \zeta_1)\alpha_2$ , so

$$e^{-2\alpha_2} = O(e^{-(1+\varepsilon)\varphi})$$

on this region if  $\theta^+ < (2/a_0^- - \zeta_1)$ . Note that we can always make such a choice of  $\theta^+$  since  $2 > a_0^-\zeta_1$  as we can check in Table 5.

(2) On the region  $\alpha_1 \geq \theta^+\alpha_2$ , we have  $a_0^-\tilde{\alpha}_1 \leq a_0^-(1 + \zeta_1/\theta^+)\alpha_1$ , so  $e^{(a_1^- - a_{k+1}^-)\alpha_1} = e^{-(1+\varepsilon)\varphi}$  on this region if  $a_{k+1}^- - a_1^- > a_0^-(1 + \zeta_1/\theta^+)$ .

On the other hand, when  $\alpha_2 \rightarrow +\infty$ ,  $\varphi = a_0^+\tilde{\alpha}_2 + O(1)$ , hence

(1) On the region  $\alpha_1 \geq \theta^-\alpha_2$ , we have  $a_0^+\tilde{\alpha}_2 \leq a_0^+(1/\theta^- + \zeta_2)\alpha_1$ , so

$$e^{-2\alpha_1} = O(e^{-(1+\varepsilon)\varphi})$$

on this region if  $\theta^- > 1/(2/a_0^+ - \zeta_2)$ . One needs to verify that this is consistent with our choice of  $\theta^+$  and  $\theta^-$ , i.e.

$$\frac{2}{a_0^-} - \zeta_1 > \theta^+ > \theta^- > \frac{1}{\frac{2}{a_0^+} - \zeta_2},$$

which turns out to be the case for all symmetric spaces of rank two (cf. Lemma 5.6).

(2) Finally, on the region  $\alpha_1 \leq \theta^-\alpha_2$ , we have

$$a_0^+\tilde{\alpha}_2 \leq a_0^+(1 + \theta^-\zeta_2)\alpha_2,$$

so if  $a_{k+1}^+ - a_1^+ > a_0^+(1 + \theta^-\zeta_2)$ , we have

$$e^{(a_1^+ - a_{k+1}^+)\alpha_2} = O(e^{-(1+\varepsilon)\varphi}).$$

This completes our proof.  $\square$

Next, we need to show the following.

**Lemma 5.8.** *There is a potential, still denoted by  $\rho$ , which is  $W$ -invariant, convex and smooth outside of a compact subset, that restricts to the potential  $\rho$  defined by (30) on the given positive Weyl chamber.*

*Proof.* By construction, the potentials  $\rho_k^{(1)}, \rho_k^{(2)}$  are invariant under the reflection through the Weyl walls  $\tilde{\alpha}_1, \tilde{\alpha}_2$ , respectively, and  $\rho^{(0)}$  is smooth, strictly convex in the interior of the given positive Weyl chamber. Thus extending  $\rho$  to the whole Cartan algebra  $\mathfrak{a}$  using the Weyl action then results in a potential, still denoted by  $\rho$ , which is smooth outside of a compact subset, and restricts to  $\rho$  on the given positive Weyl chamber.

Since  $\rho^{(0)}$  is strictly convex by definition, we only need to show that outside of a compact subset in the boundary region,  $\rho$  is strictly convex. This can be shown in the same manner as in [BD19], since near each boundary region (e.g.  $D_2$ ),  $\rho$  has the form  $\chi\rho_k^{(2)} + (1 - \chi)\rho^{(0)}$ .  $\square$

From this one can argue as in [BD19] to paste a potential in the compact subset with  $\rho$  and obtain a global potential.

**Proposition 5.9.** *There is a globally  $W$ -invariant, smooth and strictly convex potential on  $\mathfrak{a}$ , still denoted by  $\rho$ , such that*

- $\rho = \rho^{(0)}$  in the generic region,
- $\rho$  coincides with  $\rho_k^{(1)}$  and  $\rho_k^{(2)}$  in the boundary regions (for  $k$  large enough so that the Ricci potential  $\mathcal{P}(\rho)$  has the desired decay rate).

## 6. ASYMPTOTIC GEOMETRY OF THE ASYMPTOTIC SOLUTION

Throughout this section we denote by  $g = dd^c\rho$  the final metric on  $G/H$  coming from the global  $K$ -invariant potential  $\rho$  in Proposition 5.9, constructed by gluing the Tian-Yau potential  $\rho^{(0)}$  with two models near  $D_{1,2}$ .

Recall that the tangent space of  $G/H$  can be decomposed as

$$\begin{aligned} \mathfrak{g}/\mathfrak{h} &= \mathbb{C}\mathfrak{a} \bigoplus \mathbb{C}\mu_{\hat{\alpha}}, \\ &= \mathbb{C}l_1 \oplus \mathbb{C}l_2 \bigoplus \mathbb{C}\mu_{\hat{\alpha}}, \end{aligned}$$

where  $\mu_{\hat{\alpha}} = e_{\hat{\alpha}} + \theta(e_{\hat{\alpha}})$  with  $(2H_{\hat{\alpha}}/|\hat{\alpha}|^2, e_{\hat{\alpha}}, e_{-\hat{\alpha}})$  being a  $\mathfrak{sl}_2$ -triple, and  $\mathfrak{a}$  is the Cartan algebra of  $G/H$  with basis  $(l_1, l_2)$  dual to the basis  $(\alpha_1, \alpha_2)$ . We can then locally parametrize  $G/H$  by complex coordinates  $(z_1, z_2, (z_{\hat{\alpha}}))$  with respect to these bases under the exponential map. Let  $\omega_{a\bar{b}} = \frac{i}{2}dz_a \wedge d\bar{z}_b$  and  $\omega_{\hat{\alpha}\bar{\alpha}} = \frac{i}{2}dz_{\hat{\alpha}} \wedge d\bar{z}_{\hat{\alpha}}$ .

**Proposition 6.1.** *[Del20b] The metric  $g$  has the following expression*

$$g = \sum_{a,b \in \{1,2\}} d^2\rho(l_a, l_b)\omega_{a\bar{b}} + 2 \sum_{\hat{\alpha} \in \hat{R}_s^+} \coth(\hat{\alpha}) \frac{\langle d\rho, \hat{\alpha} \rangle}{|\hat{\alpha}|^2} \omega_{\hat{\alpha}\bar{\alpha}}.$$

From the local expression of the metric, we have

**Lemma 6.2.** *In the generic region, the metric  $g$  can be identified with the cone metric from the Calabi ansatz  $\rho^{(0)} = e^\varphi = e^{b\beta + \psi(\delta)}$ , which is*

$$g_0 = \rho^{(0)} \left( |d\varphi|^2 + \psi''(\delta) |\delta|^2 + \sum_{\hat{\alpha} \in \hat{R}_s^+} \frac{2}{|\hat{\alpha}|^2} \coth(\hat{\alpha}) \langle d\varphi, \hat{\alpha}_r \rangle |dz_{\hat{\alpha}}|^2 \right)$$

*Proof.* This is straightforward from the expression of the metric in local coordinates. Note that since  $d\rho^{(0)}$  belongs to the interior of the cone generated by the fundamental weights, we have  $\langle d\rho^{(0)}, \widehat{\alpha}_r \rangle = e^\varphi \langle d\varphi, \widehat{\alpha}_r \rangle > 0$  for all simple restricted roots, hence  $g_0$  is a well-defined metric.  $\square$

Let  $g_2$  be the metrics associated to the potential

$$\rho_1^{(2)} = e^{K_0^+ + a_0^+ \widetilde{\alpha}_2} (1 + e^{-a_1^+ \widetilde{\alpha}_2} w(\alpha_1)),$$

and  $g_1$  the metric associated to  $\rho_1^{(1)}$ . Then same computations as in [BD19] show that

**Lemma 6.3.** *As  $\alpha_2 \rightarrow +\infty$ , the highest order term of  $g_2$  takes the form*

$$\begin{aligned} g_2^\infty := & \rho_1^{(2)} ((a_0^+)^2 |\widetilde{\alpha}_2|^2 + 2a_0^+ \sum_{\alpha_1 \nmid \widehat{\alpha}_r} \coth(\widehat{\alpha}) \frac{\langle \alpha_1, \widehat{\alpha}_r \rangle}{|\widehat{\alpha}|^2} |dz_{\widehat{\alpha}}|^2 \\ & + e^{-a_1^+ \widetilde{\alpha}_2} (w''(\alpha_1) |\alpha_1|^2 + 2w'(\alpha_1) \sum_{\alpha_1 | \widehat{\alpha}_r} \coth(\widehat{\alpha}) \frac{\langle \alpha_1, \widehat{\alpha}_r \rangle}{|\widehat{\alpha}|^2} |dz_{\widehat{\alpha}}|^2)), \end{aligned}$$

and moreover, when  $\alpha_2 \rightarrow +\infty$

$$|g_2 - g_2^\infty|_{g_2^\infty} = O(e^{-a_1^+ \alpha_2}).$$

A similar behavior holds for the asymptotic  $g_1^\infty$  of  $g_1$ .

The  $(\alpha_1, \widehat{\alpha}_{\alpha_1 | \widehat{\alpha}})$ -component corresponds to the Stenzel metric  $g_{X_2}$  on the rank one symmetric fiber  $X_2$  of the open orbit  $G/H_2 \subset D_2$ , while the component  $(\widehat{\alpha}_{\alpha_1 \nmid \widehat{\alpha}})$  corresponds to a metric on  $G/P_2$ .

**Lemma 6.4.** *As  $\alpha_1, \alpha_2 \rightarrow +\infty$ , the metrics  $g_1^\infty$  and  $g_2^\infty$  satisfy*

$$(31) \quad |g_0 - g_1^\infty|_{g_1^\infty} = O(e^{-a_1^- \alpha_1}), \quad |g_0 - g_2^\infty|_{g_2^\infty} = O(e^{-a_1^+ \alpha_2}).$$

In other words,  $g_0$  are equivalent to  $g_1^\infty$  and  $g_2^\infty$  near  $D_0 \cap D_1$  and  $D_0 \cap D_2$ , respectively. Finally,  $(C_0, g_0)$  is equivalent to  $(\mathbb{C}, dd^c |z|^{2a_0^\pm})$  near the singularities.

*Proof.* It is enough to compare  $g_0$  and  $g_2^\infty$  components by components as  $\alpha_2 \rightarrow +\infty$ . In the  $|dz_{\widehat{\alpha}}|^2$  component, if  $\alpha_1 \nmid \widehat{\alpha}_r$ , the quotient  $g_0/g_2^\infty$  reads

$$\frac{\rho^{(0)} \langle d\varphi, \widehat{\alpha}_r \rangle}{a_0^+ \rho_1^{(2)} \langle \widetilde{\alpha}_1, \widehat{\alpha}_r \rangle}.$$

Since  $d\varphi = b\beta + \psi'(\delta)\delta$  and  $\psi'(\delta)$  is bounded, the contribution of the term  $\frac{\langle d\varphi, \widehat{\alpha}_r \rangle}{a_0^+ \langle \widetilde{\alpha}_1, \widehat{\alpha}_r \rangle}$  is just  $O(1)$ . From the ansatz (19) and asymptotic behavior of  $\rho^{(0)}$  near  $D_2$ , we have

$$\frac{\rho^{(0)}}{\rho_1^{(2)}} - 1 = O(e^{-a_1^+ \alpha_2}).$$

On the other hand, if  $\alpha_1 | \widehat{\alpha}_r$ , the corresponding quotient is

$$\frac{e^\varphi \langle d\varphi, \widehat{\alpha}_r \rangle}{\rho_1^{(2)} w'(\alpha_1) \langle \alpha_1, \widehat{\alpha}_r \rangle}.$$

Again by the same reasoning, the term  $\frac{\langle d\varphi, \widehat{\alpha}_r \rangle}{\langle \alpha_1, \widehat{\alpha}_r \rangle}$  is just  $O(1)$ , and since  $w'(\alpha_1) = O(e^{a_1^+ \zeta_2 \alpha_1})$ , the term  $\rho^{(0)}/(\rho_1^{(2)} w'(\alpha_1))$  satisfies

$$\frac{\rho^{(0)}}{\rho_1^{(2)} w'(\alpha_1)} - 1 = O(e^{-a_1^+ \alpha_2}).$$

It remains to compare the ‘‘Cartan component’’  $|d\varphi|^2 + \psi''(\delta)|\delta|^2$  of  $g_0$  with the Cartan component  $(a_0^+)^2|\tilde{\alpha}|^2 + e^{-a_1^+\tilde{\alpha}_2}w''(\alpha_1)|\alpha_1|^2$  of  $g_2^\infty$ . Remark that

$$\varphi \sim a_0^+\tilde{\alpha}_2 + K_0^+ + K_1^+e^{-a_1^+\alpha_2} + O(e^{-2a_1^+\alpha_2}),$$

and moreover in the region  $\alpha_2 \gg \alpha_1 \sim 1$ ,

$$\psi''(\delta) \sim \psi''(\alpha_2) \sim (a_1^+)^2e^{-a_1^+\alpha_2} \sim e^{-a_1^+\tilde{\alpha}_2}w''(\alpha_1).$$

One argues similarly on the region  $\alpha_1 \gg \alpha_2 \sim 1$ .

Finally, when we contract  $G/P_2$  to a point and go to the region  $1 \sim \alpha_1 \ll \alpha_2$ , the symmetric spaces  $X_2$  will be collapsed to a point due to the factor  $e^{-a_1^+\tilde{\alpha}_2} \sim e^{-a_1^+\alpha_2}$ , hence the only significant component is the  $\mathbb{S}^1$ -invariant metric  $e^{a_0^+\tilde{\alpha}_2}|\tilde{\alpha}_2|^2$  on  $\mathbb{C}$  (and likewise for  $X_1$  when  $1 \sim \alpha_2 \ll \alpha_1$ ). The lemma then follows.  $\square$

**Proposition 6.5.** *The tangent cone at infinity of  $(G/H, g)$  is the horospherical cone  $(C_0, g_0)$ .*

*Proof.* Since  $g, g_0$  are  $K$ -invariant and  $dd^c$ -exact, and that the Cartan algebra  $\mathfrak{a}$  coincides with  $\mathfrak{t}_{nc}$  (cf. Remark 3.1), it is enough to view the potentials of  $g, g_0$  as functions on  $\mathfrak{a}$  and show that outside of a large enough compact subset of  $\mathfrak{a}$ , their components are equivalent as functions on  $\mathfrak{a}$ , i.e.

$$(32) \quad |g - g_0|_g = O(\rho^{-\mu}), \quad \mu > 0,$$

where the global potential  $\rho$  has the form (30) outside of a compact subset. Then (32) is obvious on the generic region  $\alpha_1 \sim \alpha_2$  where  $\rho = \rho^{(0)}$ . It is then enough to verify (32) near the boundary regions  $\alpha_1 \gg \alpha_2 \sim 1$  and  $\alpha_2 \gg \alpha_1 \sim 1$ , i.e. near  $D_1$  and  $D_2$ . Since  $g$  behaves exactly like  $g_k^{(1,2)} = dd^c\rho_k^{(1,2)}$  on these regions for  $k$  large enough, and that  $\rho_k^{(1,2)}$  are equivalent to  $\rho_1^{(1,2)}$  as  $\alpha_{1,2} \rightarrow +\infty$  as well as all derivatives, it follows that  $g$  is equivalent to the metrics  $g_{1,2}^\infty$  near these regions.

By Lemma 6.4, the metrics  $g_0$  and  $g_1^\infty, g_2^\infty$  are equivalent near  $D_1 \cap D_0$  and  $D_2 \cap D_0$ . This allows us to conclude.  $\square$

**Remark 6.6.** *Outside of the fixed point, the tangent cone consists of the open  $G$ -orbit and the singularities (which occur in two  $G$ -orbits of codimension  $\geq 2$ ). Heuristically, the generic region  $GH$ -converges to the open orbit of the cone, and the two boundary regions converges to the singularities of the cone by collapsing the symmetric fibers  $X_1, X_2$  of  $G/H_1, G/H_2$  into two points, i.e. collapsing  $\mathbb{C}^* \times (D_0 \cap D_i)^\vee$  to  $\mathbb{C}^*$ .*

*The overall effect is a convergence towards the cone  $C_0$  with possible singularities along  $\mathbb{C}^2$ . In fact the tangent cone is always of the form  $\mathbb{C}^p \times C'$ , where  $C'$  does not split off a  $\mathbb{C}$ -factor according to [CCT02, Remark 1.27].*

**Proposition 6.7.** *For a given integer  $l_0$ , if  $\theta^\pm$  are chosen as in Proposition 5.7 and  $k \gg 1$ , then outside of a compact subset, we have for all  $l \leq l_0$  and  $1 \gg \varepsilon > 0$*

$$\left| \nabla^l \mathcal{P}(\rho) \right|_g \leq C_l e^{-(1+\varepsilon+l/2)\varphi},$$

where  $\varphi = b\beta + \psi(\delta)$  as defined in the Calabi ansatz. Moreover, the Ricci curvature of  $g$  satisfies

$$\left| \nabla^l \text{Ric}(\rho) \right|_g \leq C_l e^{-(3+\varepsilon+l/2)\varphi}.$$

*Proof.* We already have a control of the ‘‘pure’’ derivatives of  $\mathcal{P}$  (cf. Proposition 5.7). Let us now control the derivatives with respect to the metric. Recall that if  $A_g$  is the matrix of  $g$  in some coordinates  $(x_i)$ , then

$$\nabla_g \mathcal{P}(\rho) = A_g^{-1} \nabla \mathcal{P}(\rho),$$

where  $\nabla\mathcal{P}(\rho)$  is the column vector of the pure derivatives of  $\mathcal{P}(\rho)$ . Similarly, if  $g$  is diagonal, then the general term of  $\nabla_{g_0}^l\mathcal{P}(\rho)$  is

$$g^{i_1 i_1} \dots g^{i_l i_l} \frac{\partial^l \mathcal{P}(\rho)}{\partial x^{i_1} \dots \partial x^{i_l}}.$$

Each derivative with respect to  $g_0$  comes with a weight  $e^{-\varphi} \times$  (bounded term), hence in the generic region, we obtain

$$\left| \nabla^l \mathcal{P}(\rho) \right|_g = O(e^{-(l/2)\varphi - \beta}).$$

Near a boundary region, say,  $D_2$ , we have  $\varphi \sim a_0^+ \tilde{\alpha}_2$ , hence each derivative with respect to  $g_2^\infty$  comes with the weight

$$e^{-a_0^+ \tilde{\alpha}_2} e^{a_1^+ \alpha_2} \times (\text{bounded term}) \sim e^{-\varphi + a_1^+ \alpha_2} \times (\text{bounded term})$$

(in the  $H_{\alpha_2}$  direction) and  $e^{-\varphi} \times$  (bounded term)  $= O(e^{-\varphi + a_1^+ \tilde{\alpha}_2})$  in other directions. Thus given the estimate  $\mathcal{P}(\rho_k^{(2)}) = O(e^{-a_k^+ \alpha_2})$  in Proposition 5.2, which also holds for all derivatives, we obtain near  $D_2$

$$\left| \nabla^l \mathcal{P}(\rho) \right|_g = O(e^{(-a_k^+ + a_1^+ l/2)\alpha_1 - (l/2)\varphi}).$$

The computation is carried out likewise near the other boundary region  $D_1$ . We can now take  $k$  large enough so that  $(-a_k + a_1^+(l/2))$  is as negative as we want, and proceed as in Proposition 5.7.  $\square$

## 7. PROOF OF THE MAIN THEOREM

**7.1. Hein's existence package.** Recall that a  $C^{k,\alpha}$ -quasi-atlas for  $(M, g)$  consists of a given ball  $B = B(0, r) \subset \mathbb{C}^n$  of radius  $r > 0$ , and local biholomorphisms  $\Phi_x : B = B(0, r) \rightarrow M$  at each point  $x \in M$  such that

- (1)  $\Phi_x(0) = x$ , and there is  $c > 0$  satisfying  $\text{inj}(\Phi_x^*g) \geq 1/c$ ,  $1/cg_{\text{eucl}} \leq \Phi_x^*g \leq cg_{\text{eucl}}$ ,
- (2) the  $C^{k,\alpha}$ -Hölder-norm is bounded, i.e.  $\|\Phi_x^*g\|_{C^{k,\alpha}} \leq c$ .

The following package of technical conditions in Hein's thesis [Hei10] allow one to solve the complex Monge-Ampère equation for Ricci-flat metrics.

- Bounded geometry condition, i.e. existence of a  $C^{k,\alpha}$  quasi-atlas. This is used in the Laplacian and  $C^2$ -estimate.
- A sufficient condition for the weighted Sobolev inequality, called SOB( $p$ ). Here  $p$  is the growth rate of the volume form, which is  $p = 2n$  in our case. A complete manifold  $(M, g)$  is called SOB( $p$ ) if
  - (1) There is  $x_0 \in M$  and  $c \geq 1$  such that  $B(x_0, s) \setminus B(x_0, t)$  is connected for all  $s \geq t \geq c$ ,
  - (2)  $\text{vol}(B(x_0, s)) \leq cs^p$ , for all  $s \geq c$ ,
  - (3)  $\text{vol}(B(x, (1 - c^{-1})d(x_0, x))) \geq c^{-1}d(x_0, x)^p$ ,  $\text{Ric}(x) \geq -cd(x_0, x)^{-2}$  if  $d(x_0, x) \geq c$ .

The SOB( $2n$ ) condition is used in the  $L^\infty$ -estimate.

- Existence of a function  $\tilde{\rho} \sim d(x_0, \cdot) + 1$ . If furthermore  $p > 2$ , we require that  $|\nabla\tilde{\rho}| + \tilde{\rho}|dd^c\tilde{\rho}| \leq c$ .

**Proposition 7.1.** *The Riemannian curvature of  $(G/H, g)$  is unbounded if either  $a_0^+ < a_1^+$ , or  $a_0^- < a_1^-$ .*

*Proof.* The situation being completely symmetric, we will omit the  $\pm$  signs on the constants in the proof. Remark that with the summation convention, we have

$$|Rm|_g \geq R^{a\bar{b}c\bar{d}}R_{a\bar{b}c\bar{d}},$$

where  $a, b$  runs over  $\{1, 2\}$  in the local expression of the metric,  $R_{a\bar{b}c\bar{d}}$  is  $d^2g_{a\bar{b}}(l_c, l_d)$ , and

$$R^{a\bar{b}c\bar{d}} = g^{ai}g^{bj}g^{ck}g^{dl}R_{ijkl} = g^{aa}g^{bb}g^{cc}g^{dd}R_{abcd}.$$

In particular, when  $a = b, c = d$ , then  $R^{abcd}R_{abcd}$  is in fact the square of the holomorphic bisectional curvature of the planes  $(l_a, J l_a), (l_c, J l_c)$ .

Since  $g$  behaves asymptotically near  $D_2$  like  $g_2^\infty$ , we only need to consider  $g_2^\infty$ . The  $|\alpha_1|^2$ -component of  $g_2^\infty$  is

$$e^{(a_0 - a_1)\tilde{\alpha}_2}(w''(\alpha_1) + e^{-a_1\tilde{\alpha}_2}w(\alpha_1)w''(\alpha_1)).$$

The holomorphic bisectional curvature of the planes  $(\alpha_1, J\alpha_1, \tilde{\alpha}_2, J\tilde{\alpha}_2)$  then has leading term

$$\frac{w''(\alpha_1)^2(\partial_{\tilde{\alpha}_2}^2 e^{(a_0 - a_1)\tilde{\alpha}_2})^2}{(e^{(a_0 - a_1)\tilde{\alpha}_2}w''(\alpha_1))^4} = O(e^{-2(a_0 - a_1)\tilde{\alpha}_2}).$$

Thus if  $a_0 < a_1$ , the curvature explodes as  $\alpha_2 \rightarrow +\infty$ .  $\square$

**Proposition 7.2.** *The metric  $(G/H, g)$  satisfies Hein's existence package if  $a_0^\pm \geq a_1^\pm$ .*

*Proof.* From Ansatz 5.1,  $\rho_1^{(2)} \sim e^{a_0^+\tilde{\alpha}_2}$  when  $\tilde{\alpha}_2 \rightarrow \infty$ . It follows that when we consider the symmetric fiber  $X_2$  of  $\mathbb{C}^* \times G/H_2$  as  $\tilde{\alpha}_2 \rightarrow +\infty$

$$g_2^\infty \sim e^{(a_0^+ - a_1^+)\tilde{\alpha}_2}g_{X_2},$$

hence in this direction

$$\text{inj}_{g_2^\infty} \sim e^{\frac{a_0^+ - a_1^+}{2}\tilde{\alpha}_2} \text{inj}_{g_{X_2}}.$$

The same reasoning applies near  $X_1$ . Thus if  $a_1^\pm \leq a_0^\pm$ , the injectivity radius of  $g$  is bounded away from zero since the injectivity of radius of  $X_1, X_2$  is bounded away from zero as AC manifolds. This, combined with the  $C^k$ -Ricci bound in Proposition 6.7, shows that the harmonic radius is bounded below by Anderson's lemma [And90, Main Lemma 2.2], hence the harmonic  $C^{k,\alpha}$ -norm of the manifold is bounded, which implies that the total curvature is also bounded. This guarantees the existence of a good quasi-atlas for  $(G/H, g)$ , cf. [Hei10, Lemma 4.3] or [TY90, Proposition 1.2].

Connectedness of the annulus follows from the connectedness of  $C_0$  and the Gromov-Hausdorff convergence of  $(G/H, g)$  to  $(C_0, g_0)$ , cf. 6.5. The Ricci-estimate is already in Proposition 6.7. To check the volume growth condition, it is enough to show that for  $c > 0$  large enough and any  $s > c$ , the volume ball  $B(x_0, s)$  of  $(G/H, g)$  satisfies

$$c^{-1}s^{2n} \leq \text{vol}(B(x_0, s)) \leq cs^{2n}.$$

Since  $(G/H, g) \xrightarrow{\text{pGH}} (C_0, g_0)$ , this follows from Colding's volume convergence theorem [Col97, Theorem 0.1] (which is valid under a Ricci lower bound), and the fact that  $C_0$  is non-collapsed.

In particular, our volume growth is maximal (of order  $2n$  with  $n > 1$ ), hence to apply Hein's existence package, we need to verify

$$|\nabla\rho| + \rho|dd^c\rho| \leq c.$$

Indeed,  $\nabla\rho$  is bounded since  $\rho$  is asymptotically the distance function  $\rho^{(0)}$  on the cone, and  $\rho|dd^c\rho|$  is bounded since  $\Delta\rho^2 \sim \Delta\rho^{(0)} \sim n$ .  $\square$

**Remark 7.3.** *Propositions 7.1, 7.2 show that the holomorphic bisectional curvature of  $(G/H, g)$  is bounded if and only if a condition depending only on the root data of  $G/H$  is satisfied.*

**7.2. Existence.** One can check by direct computation that  $a_0^\pm \geq a_1^\pm$  for all finite family of symmetric spaces of rank two (see Table 5 for the  $R_1 \times R_1$  and  $A_2$  cases, and Lemma 7.4 with Table 4 below for the finite families of the  $BC_2/B_2$  cases). On the other hand, verifying this condition is non-trivial for the infinite families, but the methods are more or less elementary, cf. Lemma 7.5.

The existence theorem in Hein's thesis then allows us to perturb  $\omega$  (in the Kähler class consisting of  $K$ -invariant  $\partial\bar{\partial}$ -exact Kähler forms) to a genuine  $K$ -invariant Ricci-flat metric  $\omega_u = \omega + dd^c u$ , where  $u$  is a smooth  $K$ -invariant  $\omega$ -psh function and has decay rate  $O(\rho^{2-\mu})$ ,  $\mu > 2$  being the decay rate of  $\mathcal{P}(\rho)$ . The final metric  $\omega_u$  then has the same tangent cone at infinity as  $\omega$  (by a priori estimate). The conclusion then follows.

**7.2.1. Bounded geometry.** We have chosen

$$\delta = \alpha_2 - t\alpha_1,$$

such that  $\langle \delta, \alpha_1 \rangle < 0$  and  $\beta = x\alpha_2 + y\alpha_1$  is a vector in the interior of the Weyl chamber such that  $\langle \delta, \beta \rangle = 0$ . Since we want  $\beta$  as the *normalized* Reeb vector of a  $K$ -stable horospherical cone, we can suppose that

$$(33) \quad \langle \varpi, \beta \rangle = n,$$

without loss of generality. A straightforward calculation then gives

$$\begin{cases} \frac{x}{y} = \frac{t\langle \alpha_1, \alpha_1 \rangle - \langle \alpha_1, \alpha_2 \rangle}{\langle \alpha_2, \alpha_2 \rangle - t\langle \alpha_1, \alpha_2 \rangle}, \\ x(A_1 \langle \alpha_1, \alpha_2 \rangle + A_2 \langle \alpha_2, \alpha_2 \rangle) + y(A_1 \langle \alpha_1, \alpha_1 \rangle + A_2 \langle \alpha_1, \alpha_2 \rangle) = n \end{cases}$$

Recall that

$$\delta_\pm = \frac{\lambda_\pm}{1 + m_\pm},$$

where  $m_\pm$  are the multiplicities of the roots in the polynomial equation

$$\int_{\lambda_-}^{\lambda_+} pP(p)dp = 0.$$

By analyzing the asymptotic behavior of the conical potential, we also obtained

$$a_1^+ = \delta_+ = -\frac{\langle \varpi, \alpha_1 \rangle}{(m_+ + 1) \langle \alpha_1, \delta \rangle}, \quad a_1^- = -t\delta_- = \frac{t \langle \varpi, \alpha_2 \rangle}{(m_- + 1) \langle \alpha_2, \delta \rangle}.$$

By definition, we have  $a_0^+ \tilde{\alpha}_2 = b\beta + b_1^+ \delta$  (and a similar formula for  $a_0^-$ ) with  $b = \langle \varpi, \beta \rangle / n \langle \beta, \beta \rangle$ . It follows that

$$a_0^+ \langle \tilde{\alpha}_2, \beta \rangle = \langle \varpi, \beta \rangle / n = 1, \quad a_0^- \langle \tilde{\alpha}_1, \beta \rangle = \langle \varpi, \beta \rangle / n = 1.$$

In the  $BC_2$  or  $B_2$  cases, we have  $a_0^+ \geq a_1^+$  iff

$$t \geq \frac{-2m_3 - 2m_3^2 - 2m_2}{(m_1 + m_3 + 1)(2m_2 + m_1 + 2m_3)},$$

which is always satisfied. Thus one only needs to verify the bounded geometry condition  $a_0^- \geq a_1^-$ . After a straightforward computation, this is equivalent to

$$t(m_2 m_1 - m_1 - 2m_3) \leq A_1(m_2 + 1).$$

When  $m_1 m_2 - m_1 - 2m_3 = 0$ , the condition is trivial, i.e. bounded geometry holds for the infinite family  $\mathrm{SO}_r / \mathrm{SO}_2 \times \mathrm{SO}_{r-2}$ , as well as for  $\mathrm{SL}_5 / \mathrm{SL}_2 \times \mathrm{SL}_3$ . On the other hand, when  $m_1 m_2 - m_1 - 2m_3 > 0$ , we need to check that

$$t \leq \frac{(2m_1 + 2m_2 + 4m_3)(m_2 + 1)}{m_1(m_2 - 1) - 2m_3}.$$

Recall that  $\alpha_2$  is the long positive root with multiplicities  $m_2$ , and  $\alpha_1$  the short one with multiplicity  $m_1$ . The positive roots in the  $BC_2$  and  $B_2$  cases are  $\alpha_1$ ,  $\alpha_1 + \alpha_2$  (with multiplicity  $m_1$ ),  $2\alpha_1$ ,  $2\alpha_1 + 2\alpha_2$  (with multiplicity  $m_3$ ), and  $\alpha_2$ ,  $\alpha_2 + 2\alpha_1$  (with multiplicity  $m_2$ ). The Duistermaat-Heckman polynomial in this case is

$$\begin{aligned} P(p) &= \prod_{\alpha \in R^+} \langle \alpha, \varpi + p\delta \rangle^{m_\alpha} \\ &= (2m_2 + (2+t)p)^{m_2} (2m_1 + 2m_2 + 4m_3 - tp)^{m_2} \\ &\quad (m_1 + 2m_3 - (1+t)p)^{m_1+m_3} (m_1 + 2m_2 + 2m_3 + p)^{m_1+m_3}. \end{aligned}$$

From Table 5, by the result in [Ngh23] recalled in Theorem 4.2, the K-stability condition is easily seen to be equivalent to  $t$  being the unique positive root of

$$(34) \quad Q(t) = \int_{\frac{-2m_2}{2+t}}^{\frac{m_1+2m_3}{1+t}} pP(p)dp = 0.$$

**Lemma 7.4.** *Bounded geometry holds for all finite families of type  $BC_2$  and  $B_2$ .*

*Proof.* The proof is a straightforward case-by-case computation from the K-stability condition of the horospherical cone and the data in Table 5.  $\square$

Before verifying bounded geometry for the infinite families, let us make a brief digression on hypergeometric series. The reader might consult [WW21] for more information. The *Appell hypergeometric series*  $F_1$  is defined for  $a, b_1, b_2, c, y, z \in \mathbb{C}$  with  $|y|, |z| < 1$  by the double series

$$F_1(a, b_1, b_2, c; y, z) = \sum_{m, n=0}^{+\infty} \frac{(a)_{m+n} (b_1)_m (b_2)_n}{(c)_{m+n}} y^m z^n,$$

where  $(\alpha)_m$  is the Pochhammer symbol

$$(\alpha)_m := \alpha(\alpha+1)\dots(\alpha+m-1), \quad (\alpha)_0 = 1.$$

When  $z = 0$ ,  $F_1$  is reduced to the more well-known *Gauss hypergeometric series*  $F_2(a, b_1, c; z)$

$$F_1(a, b_1, b_2, c; y, 0) = F_2(a, b_1, c; y) := \sum_{m=0}^{\infty} \frac{(a)_m (b_1)_m}{(c)_m} y^m.$$

When  $\Re(c) > \Re(a) > 0$ ,  $F_1$  admits an integral representation as

$$B(a, c-a)F_1(a, b_1, b_2, c; y, z) = \int_0^1 u^{a-1} (1-u)^{c-a-1} (1-yu)^{-b_1} (1-zu)^{-b_2} du,$$

where  $B(s, t)$  is the beta function  $\int_0^1 u^s (1-u)^t du$  with values  $\frac{p!q!}{(p+q+1)!}$  at integers  $(p+1, q+1)$ . We will only be concerned with values of  $F_1$  when  $a \geq 1, b_1, b_2 < 0, c > a$  are integers, in which case  $F_1$  is just a finite sum and a rational expression of  $a, b_1, b_2, c, y, z$ .

The language of hypergeometric series might not offer more insight if our goal is just to check the numerical conditions in Lemma 7.5. However, since the calculations



get nasty very quickly when  $m_3 = 3$ , such language makes the conditions easier to be implemented on a computer software with inbuilt function to calculate the coefficients of hypergeometric series, e.g. *Mathematica*.

For the two infinite families of type  $BC_2$ , the condition is translated in terms of  $r$  as in Table 4. Note that  $(12r - 27)/(2r - 10) \geq 6$  and  $(20r - 30)/(6r - 27) \geq 10/3$  for all  $r \geq 5$ . Thus it is enough to show the following.

**Lemma 7.5.** *For the infinite family  $(2r - 8, 2, 1)$ , we have  $0 < t < 6$ , and for the family  $(4r - 16, 4, 3)$ , we have  $1 < t < 10/3$ . In particular, bounded geometry holds for these families.*

*Proof.* Let  $Q(t, r) := \int_{\lambda_-(r)}^{\lambda_+(r)} pP(p, t, r)dp$ . Since  $t$  is the unique root of  $Q$  for all  $r$ , it is enough to show that  $Q(0, r) > 0$ ,  $Q(t_0, r) < 0$  for  $t_0 = 6, 10/3$  in each case, and  $Q(1, r) > 0$  when  $m_3 = 3$ .

A direct computation shows that  $Q(0, r) > 0$  iff

$$\int_{-m_2}^{m_1+2m_3} p(2m_2 + 2p)^{m_2} (m_1 + 2m_3 - p)^{m_1+m_3} (m_1 + 2m_2 + 2m_3 + p)^{m_1+m_3} dp > 0.$$

After a change of variable  $u := ((2m_2 + 2p)/A_1)^2$ , the inequality is equivalent to

$$\int_0^1 (A_1 u^{\frac{1}{2}} - 2m_2) u^{\frac{m_2-1}{2}} (1-u)^{(m_1+m_3)} du > 0.$$

This is exactly Condition [BD19, (6)], which holds for all infinite families by virtue of Lemma 3.4 in *loc.cit.*

In the case  $(m_1, m_2, m_3) = (2r - 8, 2, 1)$ , we have

$$Q(t, r) = \int_{\frac{-4}{2+t}}^{\frac{2r-6}{1+t}} p(4 + (2+t)p)^2 (4r - 8 - tp)^2 (2r - 6 - (1+t)p)^{2r-7} (2r - 2 + p)^{2r-7} dp,$$

and we need to verify that  $Q(6, r) < 0$ . Up to a positive constant

$$Q(6, r) = \int_{-\frac{1}{2}}^{\frac{2r-6}{7}} p(1 + 2p)^2 (2r - 4 - 3p)^2 (2r - 6 - 7p)^{2r-7} (2r - 2 + p)^{2r-7} dp.$$

After a change of variable  $p = \frac{(4r-5)u-7}{14}$  and clearing positive constants, we can suppose that

$$Q(6, r) = - \int_0^1 \left(1 - \frac{4r-5}{7}u\right) u^2 \left(1 - \frac{3}{7}u\right)^2 (1-u)^{2r-7} \left(1 + \frac{1}{7}u\right)^{2r-7} du.$$

Consider the function defined on  $\mathbb{R}$  by

$$H_r(z) := \frac{\int_0^1 u^2 \left(1 - \frac{3}{7}u\right)^2 (1-u)^{2r-7} (1-zu)^{2r-7} du}{\int_0^1 u^3 \left(1 - \frac{3}{7}u\right)^2 (1-u)^{2r-7} (1-zu)^{2r-7} du}.$$

Let us show that this is a convex function on  $] -\infty, 1]$  for all  $r \geq 5$ . Indeed, for all  $z_1, z_2 \in ] -\infty, 1]$ ,  $1 - z_1u$  and  $1 - z_2u$  are positive for all  $u \in [0, 1]$ , hence

$$\left(1 - \frac{z_1 + z_2}{2}u\right)^{2r-7} \leq \frac{1}{2} \left( \left(\frac{1 - z_1u}{2}\right)^{2r-7} + \left(\frac{1 - z_2u}{2}\right)^{2r-7} \right).$$

Moreover we have

$$\max \left\{ \left(\frac{1 - z_1u}{2}\right)^{2r-7}, \left(\frac{1 - z_2u}{2}\right)^{2r-7} \right\} \leq \left(1 - \frac{z_1 + z_2}{2}u\right)^{2r-7}.$$

These two inequalities together show that

$$H_r \left( \frac{z_1 + z_2}{2} \right) \leq \frac{H_r(z_1) + H_r(z_2)}{2},$$

i.e.  $H_r$  is convex on  $] -\infty, 1]$ .

In terms of the Appell series  $F_1$ , the inequality  $Q(6, r) < 0$  is equivalent to

$$H_r \left( -\frac{1}{7} \right) = \frac{B(3, 2r-6)F_1(3, -2, -(2r-7), 2r-3, \frac{3}{7}, \frac{-1}{7})}{B(4, 2r-6)F_1(4, -2, -(2r-7), 2r-2, \frac{3}{7}, \frac{-1}{7})} > \frac{4r-5}{7},$$

where  $B(3, 2r-6)/B(4, 2r-6) = (2r-3)/3$ . By convexity, we have for all  $z < 0$ ,

$$H_r(z) \geq H_r(0) + H'_r(0)z$$

where by computing the first two terms of the series expansion in the  $z$ -argument of  $F_1$  at 0,

$$H_r(0) = \frac{(-1+2r)(327-371r+98r^2)}{3(223-315r+98r^2)},$$

and

$$H'_r(0) = \frac{(-7+2r)(-88290+296949r-400372r^2+260141r^3-80948r^4+9604r^5)}{3r(223-315r+98r^2)^2}.$$

Finally,

$$\begin{aligned} & H \left( -\frac{1}{7} \right) - \frac{4r-5}{7} \\ & \geq \frac{-618030 + 2490711r - 3779540r^2 + 2655919r^3 - 866908r^4 + 105644r^5}{21r(223-315r+98r^2)^2}. \end{aligned}$$

Note that the leading coefficient on the polynomial numerator  $P_1(r)$  is positive. We can compute the root of  $P_1$  and show that they are all strictly smaller than 5, hence  $P_1(r) \geq P_1(5) > 0$ . Thus  $Q(6, r) < 0$  for all  $0 \leq u \leq 1$ .

In the case  $(m_1, m_2, m_3) = (4r-16, 4, 3)$ , we have

$$Q(t, r) = \int_{\frac{-8}{2+t}}^{\frac{4r-10}{1+t}} p(8+(2+t)p)^4(8r-12-tp)^4(4r-10-(1+t)p)^{4r-13}(4r-2+p)^{4r-13} dp,$$

and we need to check that  $Q(10/3, r) < 0$ , i.e.

$$\int_{-\frac{3}{2}}^{\frac{12r-30}{13}} p(3+2p)^4(12r-18-5p)^4(12r-30-13p)^{4r-13}(4r-2+p)^{4r-13} dp < 0.$$

After the change of variable  $p = \frac{(24r-21)u-39}{26}$ , we can suppose that (up to positive constants)

$$Q(10/3, r) = - \int_0^1 \left(1 - \frac{8r-7}{13}u\right)u^4 \left(1 - \frac{5}{13}u\right)^4 (1-u)^{4r-13} \left(1 + \frac{3}{13}u\right)^{4r-13} du.$$

By the same reasoning as above, the function

$$H_r(z) := \frac{\int_0^1 u^4 \left(1 - \frac{5}{13}u\right)^4 (1-u)^{4r-13} (1-zu)^{4r-13} du}{\int_0^1 u^5 \left(1 - \frac{5}{13}u\right)^4 (1-u)^{4r-13} (1-zu)^{4r-13} du}$$

is convex on  $] -\infty, 1]$  for all  $r \geq 5$ . We then proceed to check that

$$H_r \left( -\frac{3}{13} \right) = \frac{B(5, 4r-12)F_1(5, -4, -(4r-13), 4r-7, \frac{5}{13}, \frac{-3}{13})}{B(6, 4r-12)F_1(6, -4, -(4r-13), 4r-6, \frac{5}{13}, \frac{-3}{13})} > \frac{8r-7}{13},$$

with  $B(5, 4r - 12)/B(6, 4r - 12) = (4r - 7)/5$ . Again, the series expansion in the  $z$ -argument of the Appell functions at 0 and convexity of  $H_r$  show that for all  $z \leq 0$ ,

$$H_r(z) \geq H_r(0) + H'_r(0)z.$$

where

$$H_r(0) = \frac{(-3 + 4r)(9009405 - 21344609r + 18336838r^2 - 6784336r^3 + 913952r^4)}{5G(r)}.$$

and

$$\begin{aligned} H'_r(0) = & \frac{2(-13 + 4r)}{5(-1 + 2r)G(r)^2} (-59648595700050 + 361147658887485r - 953718016145076r^2 \\ & + 1440364128450741r^3 - 1370700222571316r^4 + 852476267292676r^5 \\ & - 346597132254464r^6 + 88867036945024r^7 - 13043659725824r^8 \\ & + 835308258304r^9), \end{aligned}$$

where  $G(r) = (5914845 - 15897921r + 15254278r^2 - 6221904r^3 + 913952r^4)$ . Finally, evaluating at  $z = -3/13$  yields

$$\begin{aligned} & H_r\left(-\frac{3}{13}\right) - \frac{8r - 7}{13} \\ & \geq \frac{1}{G_1(r)} (-2574310334032125 + 12163729606848990r - 19659125767233897r^2 \\ & + 3313560826702152r^3 + 32935584407475308r^4 - 54028266881305808r^5 \\ & + 43597604159841472r^6 - 20860496268764672r^7 \\ & + 6010547069043712r^8 - 966644418301952r^9 + 66824660664320r^{10}), \end{aligned}$$

with  $G_1(r) = 13(7 - 18r + 8r^2)G(r)^2$ . Note that the leading coefficient on the numerator is positive. We can then apply the same argument as in the previous case to show that  $Q(10/3, r) < 0$ .

It remains to show that  $Q(1, r) > 0$  when  $m_3 = 3$ . We have up to a positive constant

$$Q(1, r) = \int_{-8/3}^{2r-5} p(8 + 3p)^4(8r - 12 - p)^4(2r - 5 - p)^{4r-13}(4r - 2 + p)^{4r-13} dp,$$

and after the change of variable  $p = \frac{(6r-7)u-8}{3}$ , we obtain up to a positive constant

$$Q(1, r) = - \int_0^1 \left(1 - \frac{6r-7}{8}u\right)u^4\left(1 - \frac{u}{4}\right)^4(1-u)^{4r-13}\left(1 + \frac{u}{2}\right)^{4r-13} du.$$

Consider now the function defined on  $\mathbb{R}$  by

$$H_r(z) := \frac{\int_0^1 u^5\left(1 - \frac{1}{4}u\right)^4(1-u)^{4r-13}(1-zu)^{4r-13} du}{\int_0^1 u^4\left(1 - \frac{1}{4}u\right)^4(1-u)^{4r-13}(1-zu)^{4r-13} du}.$$

Again this is a convex function on  $] -\infty, 1]$  for all  $r \geq 5$ . The inequality  $Q(1, r) > 0$  is equivalent to

$$H_r\left(-\frac{1}{2}\right) = \frac{B(6, 4r - 12)F_1\left(6, -4, -(4r - 13), 4r - 6, \frac{1}{4}, \frac{-1}{2}\right)}{B(5, 4r - 12)F_1\left(5, -4, -(4r - 13), 4r - 7, \frac{1}{4}, \frac{-1}{2}\right)} > \frac{8}{6r - 7},$$

where  $B(6, 4r - 12)/B(5, 4r - 12) = 5/(4r - 7)$ . By the same argument as above,

$$H_r(z) \geq H_r(0) + H'_r(0)z$$

	Multiplicities	$a_0^- \geq a_1^-$
$SL_r / SL_2 \times SL_{r-2}$	$(2r - 8, 2, 1), r \geq 5$	trivial if $r = 5, t \leq \frac{12r-27}{2r-10}$ if $r \geq 6$
$Sp_{2r} / Sp_4 \times Sp_{2r-4}$	$(4r - 16, 4, 3), r \geq 5$	$t \leq \frac{20r-30}{6r-27}$
$SO_{10} / GL_5$	$(4, 4, 1)$	$t \leq 10$
$E_6 / SO_{10} \times SO(2)$	$(8, 6, 1)$	$t \leq \frac{112}{19}$
$SO_r / SO_2 \times SO_{r-2}$	$(r - 4, 1, 0), r \geq 5$	trivial
$SO_5 \times SO_5 / SO_5$	$(2, 2, 0)$	$t \leq 12$
$Sp_8 / Sp_4 \times Sp_4$	$(4, 3, 0)$	$t \leq 7$

TABLE 4. Bounded geometry condition for  $BC_2$  and  $B_2$ .

where

$$H_r(0) = \frac{5(15741 - 48336r + 52928r^2 - 24576r^3 + 4096r^4)}{G(r)},$$

and

$$\begin{aligned} H'_r(0) = & \frac{10}{(-1 + 2r)G(r)^2} (-13 + 4r)(-367033275 + 2594714553r - 7943750640r^2 \\ & + 13824076800r^3 - 15075823616r^4 + 10689089536r^5 \\ & - 4929290240r^6 + 1426063360r^7 - 234881024r^8 \\ & + 16777216r^9), \end{aligned}$$

where  $G(r) = (-3 + 4r)(27585 - 71832r + 67904r^2 - 27648r^3 + 4096r^4)$ . Finally, evaluating at  $z = -1/2$  yields

$$\begin{aligned} & H_r\left(-\frac{1}{2}\right) - \frac{8}{6r-7} \\ & \geq \frac{1}{G_1(r)} (-157805645850 + 1283896287045r - 4637385570222r^2 \\ & + 9817511490024r^3 - 13540927644160r^4 + 12783832862720r^5 \\ & - 8436522991616r^6 + 3896079450112r^7 - 1235710115840r^8 \\ & + 256859176960r^9 - 31574720512r^{10} + 1744830464r^{11}) \end{aligned}$$

where  $G_1(r) = (3 - 4r)^2(-1 + 2r)(-7 + 6r)G(r)^2$ . The polynomial numerator has positive leading coefficient with all of the roots being strictly smaller than 5, hence strictly positive for all  $r \geq 5$ . Thus  $H_r(-1/2) > 8/(6r - 7)$ , i.e.  $Q(1, r) > 0$ .  $\square$

**Remark 7.6.** *One could try to bound the function  $H_r$  from below by using integration by parts and elementary inequalities, e.g. the trivial ones and/or the AM-GM inequality, but such methods would only yield information up to the first derivative of  $H_r$ . Here we need a precise information on the second derivative of  $H_r$  to obtain a good lower bound.*

	$R_1 \times R_1$	$A_2$	$BC_2$
$t$	$\frac{(m_1+2\hat{m}_1)(m_2+\hat{m}_2+1)}{(m_2+2\hat{m}_2)(m_1+\hat{m}_1+1)}$	1	irrational in general
$\langle \alpha_1, \alpha_2 \rangle$	0	$-1/2$	-1
$\langle \alpha_1, \alpha_1 \rangle$	1	1	1
$\langle \alpha_2, \alpha_2 \rangle$	1	1	2
$\tilde{\alpha}_1$	$\alpha_1$	$\alpha_1 + \frac{1}{2}\alpha_2$	$\alpha_1 + \frac{1}{2}\alpha_2$
$\tilde{\alpha}_2$	$\alpha_2$	$\alpha_2 + \frac{1}{2}\alpha_1$	$\alpha_2 + \alpha_1$
$\varpi$	$(m_1 + 2\hat{m}_1)\alpha_1 + (m_2 + 2\hat{m}_2)\alpha_2$	$2m(\alpha_1 + \alpha_2)$	$(2m_1 + 2m_2 + 4m_3)\alpha_1 + (m_1 + 2m_2 + 2m_3)\alpha_2$
$A_1$	$m_1 + 2\hat{m}_1$	$2m$	$2m_1 + 2m_2 + 4m_3$
$A_2$	$m_2 + 2\hat{m}_2$	$2m$	$m_1 + 2m_2 + 2m_3$
$m_+$	$m_1 + \hat{m}_1$	$m$	$m_1 + m_3$
$m_-$	$m_2 + \hat{m}_2$	$m$	$m_2$
$n$	$2 + m_+ + m_-$	$2 + 3m$	$2(1 + m_1 + m_2 + m_3)$
$\beta$	$\frac{m_2+\hat{m}_2+1}{m_2+2\hat{m}_2}\alpha_2 + \frac{m_1+\hat{m}_1+1}{m_1+2\hat{m}_1}\alpha_1$	$\frac{n}{2m}(\alpha_2 + \alpha_1)$	$\frac{n((2+t)\alpha_1+(1+t)\alpha_2)}{2m_2(1+t)+(m_1+2m_3)(2+t)}$
$\lambda_+$	$\frac{(m_2+2\hat{m}_2)(m_1+\hat{m}_1+1)}{m_2+\hat{m}_2+1}$	$2m/3$	$\frac{m_1+2m_3}{1+t}$
$\lambda_-$	$-(m_2 + 2\hat{m}_2)$	$-2m/3$	$-\frac{2m_2}{2+t}$
$a_0^+$	$\frac{m_2+2\hat{m}_2}{m_2+\hat{m}_2+1}$	$8m/3n$	$\frac{2m_2(1+t)+(m_1+2m_3)(2+t)}{n(1+t)}$
$a_1^+ = \delta_+$	$\frac{m_2+2\hat{m}_2}{m_2+\hat{m}_2+1}$	$\frac{2m}{3(m+1)}$	$\frac{m_1+2m_3}{(m_1+m_3+1)(1+t)}$
$a_0^-$	$\frac{m_1+2\hat{m}_1}{m_1+\hat{m}_1+1}$	$8m/3n$	$\frac{4m_2(1+t)+(2m_1+4m_3)(2+t)}{n(t+2)}$
$a_1^- = -t\delta_-$	$\frac{m_1+2\hat{m}_1}{m_1+\hat{m}_1+1}$	$\frac{2m}{3(m+1)}$	$\frac{2tm_2}{(m_2+1)(2+t)}$
$a_0^\pm \geq a_1^\pm$	true	true	$(m_1(m_2 - 1) - 2m_3)t \leq (2m_1 + 2m_2 + 4m_3)(m_2 + 1)$ , cf. Table 4

TABLE 5. Relevant constants.

## REFERENCES

- [AL92] H. Azad and J.-J. Loeb. Plurisubharmonic functions and Kählerian metrics on complexification of symmetric spaces. *Indag. Math. (N.S.)*, 3(4):365–375, 1992.
- [And90] Michael T. Anderson. Convergence and rigidity of manifolds under Ricci curvature bounds. *Invent. Math.*, 102(2):429–445, 1990.
- [BD19] Olivier Biquard and Thibaut Delcroix. Ricci flat Kähler metrics on rank two complex symmetric spaces. *J. Éc. polytech. Math.*, 6:163–201, 2019.
- [BG97] Olivier Biquard and Paul Gauduchon. Hyperkähler metrics on cotangent bundles of Hermitian symmetric spaces. In *Geometry and physics. Proceedings of the conference at Aarhus University, Aarhus, Denmark, 1995*, pages 287–298. New York, NY: Marcel Dekker, 1997.
- [BG22] Olivier Biquard and Henri Guenancia. Degenerating Kähler-Einstein cones, locally symmetric cusps, and the Tian-Yau metric. *Invent. Math.*, 230(3):1101–1163, 2022.
- [Bie04] Roger Bielawski. Entire invariant solutions to Monge-Ampère equations. *Proc. Amer. Math. Soc.*, 132(9):2679–2682, 2004.
- [BP87] Michel Brion and Franz Pauer. Valuations des espaces homogènes sphériques. *Comment. Math. Helv.*, 62(2):265–285, 1987.
- [CC97] Jeff Cheeger and Tobias H. Colding. On the structure of spaces with Ricci curvature bounded below. I. *J. Differential Geom.*, 46(3):406–480, 1997.
- [CC00] Jeff Cheeger and Tobias H. Colding. On the structure of spaces with Ricci curvature bounded below. II. *J. Differential Geom.*, 54(1):13–35, 2000.
- [CCT02] J. Cheeger, T. H. Colding, and G. Tian. On the singularities of spaces with bounded Ricci curvature. *Geom. Funct. Anal.*, 12(5):873–914, 2002.
- [CH13] Ronan J. Conlon and Hans-Joachim Hein. Asymptotically conical Calabi-Yau manifolds, I. *Duke Math. J.*, 162(15):2855–2902, 2013.
- [CH15] Ronan J. Conlon and Hans-Joachim Hein. Asymptotically conical Calabi-Yau metrics on quasi-projective varieties. *Geom. Funct. Anal.*, 25(2):517–552, 2015.
- [CH22] Ronan J. Conlon and Hans-Joachim Hein. Classification of asymptotically conical Calabi-Yau manifolds. 2022. arXiv/2201.00870.
- [CL22] Tristan Collins and Yang Li. Complete Calabi-Yau metrics in the complement of two divisors. 2022. arXiv/2203.10656.
- [CM14] Tobias Holck Colding and William P. Minicozzi, II. On uniqueness of tangent cones for Einstein manifolds. *Invent. Math.*, 196(3):515–588, 2014.
- [Col97] Tobias H. Colding. Ricci curvature and volume convergence. *Ann. Math. (2)*, 145(3):477–501, 1997.
- [CR21] Ronan J. Conlon and Frédéric Rochon. New examples of complete Calabi-Yau metrics on  $\mathbb{C}^n$  for  $n \geq 3$ . *Ann. Sci. Éc. Norm. Supér. (4)*, 54(2):259–303, 2021.

- [CT94] Jeff Cheeger and Gang Tian. On the cone structure at infinity of Ricci flat manifolds with Euclidean volume growth and quadratic curvature decay. *Invent. Math.*, 118(3):493–571, 1994.
- [DCP83] C. De Concini and C. Procesi. Complete symmetric varieties. In *Invariant theory (Montecatini, 1982)*, volume 996 of *Lecture Notes in Math.*, pages 1–44. Springer, Berlin, 1983.
- [Del20a] Thibaut Delcroix. K-stability of Fano spherical varieties. *Ann. Sci. Éc. Norm. Supér. (4)*, 53(3):615–662, 2020.
- [Del20b] Thibaut Delcroix. Kähler geometry of horosymmetric varieties, and application to Mabuchi’s K-energy functional. *J. Reine Angew. Math.*, 763:129–199, 2020.
- [Del22] Thibaut Delcroix. Examples of K-unstable Fano manifolds. *Ann. Inst. Fourier (Grenoble)*, 72(5):2079–2108, 2022.
- [Del23] Thibaut Delcroix. Limits of conical Kähler-Einstein metrics on rank one horosymmetric spaces. 2023. arXiv/2310.04062.
- [DS17] Simon Donaldson and Song Sun. Gromov-Hausdorff limits of Kähler manifolds and algebraic geometry, II. *J. Differential Geom.*, 107(2):327–371, 2017.
- [Hei10] Hans-Joachim Hein. On gravitational instantons. *PhD Thesis*, 2010.
- [Kno91] Friedrich Knop. The Luna-Vust theory of spherical embeddings. In *Proceedings of the Hyderabad Conference on Algebraic Groups (Hyderabad, 1989)*, pages 225–249. Manoj Prakashan, Madras, 1991.
- [Koi23] Naoyuki Koike. Calabi-Yau structures on the complexifications of rank two symmetric spaces. 2023. arXiv/2309.17418.
- [Li19] Yang Li. A new complete Calabi-Yau metric on  $\mathbb{C}^3$ . *Invent. Math.*, 217(1):1–34, 2019.
- [LM85] Robert B. Lockhart and Robert C. McOwen. Elliptic differential operators on noncompact manifolds. *Ann. Scuola Norm. Sup. Pisa Cl. Sci. (4)*, 12(3):409–447, 1985.
- [LWX21] Chi Li, Xiaowei Wang, and Chenyang Xu. Algebraicity of the metric tangent cones and equivariant K-stability. *J. Amer. Math. Soc.*, 34(4):1175–1214, 2021.
- [Ngh23] Tran-Trung Nghiem. Spherical cones: classification and a volume minimization principle. *J. Geom. Anal.*, 33(7):Paper No. 221, 46, 2023.
- [Pas06] Boris Pasquier. Variétés horosphériques de Fano. *PhD Thesis*, 2006.
- [Pas17] Boris Pasquier. A survey on the singularities of spherical varieties. *EMS Surv. Math. Sci.*, 4(1):1–19, 2017.
- [Ruz10] Alessandro Ruzzi. Geometrical description of smooth projective symmetric varieties with Picard number one. *Transform. Groups*, 15(1):201–226, 2010.
- [Ste93] Matthew B. Stenzel. Ricci-flat metrics on the complexification of a compact rank one symmetric space. *Manuscripta Math.*, 80(2):151–163, 1993.
- [SZ22] Song Sun and Junsheng Zhang. No semistability at infinity for Calabi-Yau metrics asymptotic to cones. 2022. arXiv/2208.05098, to appear in *Inventiones Mathematicae*.
- [Szé19] Gábor Székelyhidi. Degenerations of  $\mathbf{C}^n$  and Calabi-Yau metrics. *Duke Math. J.*, 168(14):2651–2700, 2019.
- [Szé20] Gábor Székelyhidi. Uniqueness of some Calabi-Yau metrics on  $\mathbf{C}^n$ . *Geom. Funct. Anal.*, 30(4):1152–1182, 2020.
- [TY90] G. Tian and Shing-Tung Yau. Complete Kähler manifolds with zero Ricci curvature. I. *J. Amer. Math. Soc.*, 3(3):579–609, 1990.
- [TY91] Gang Tian and Shing-Tung Yau. Complete Kähler manifolds with zero Ricci curvature. II. *Invent. Math.*, 106(1):27–60, 1991.
- [vC08] Craig van Coevering. A construction of complete Ricci-flat Kähler manifolds. 2008. arXiv/0803.0112.
- [vC10] Craig van Coevering. Ricci-flat Kähler metrics on crepant resolutions of Kähler cones. *Math. Ann.*, 347(3):581–611, 2010.
- [vC11] Craig van Coevering. Examples of asymptotically conical Ricci-flat Kähler manifolds. *Math. Z.*, 267(1-2):465–496, 2011.
- [Vus90] Thierry Vust. Plongements d’espaces symétriques algébriques: une classification. *Ann. Scuola Norm. Sup. Pisa Cl. Sci. (4)*, 17(2):165–195, 1990.
- [WW21] E. T. Whittaker and G. N. Watson. *A course of modern analysis—an introduction to the general theory of infinite processes and of analytic functions with an account of the principal transcendental functions*. Cambridge University Press, Cambridge, fifth edition, 2021. With a foreword by S. J. Patterson.