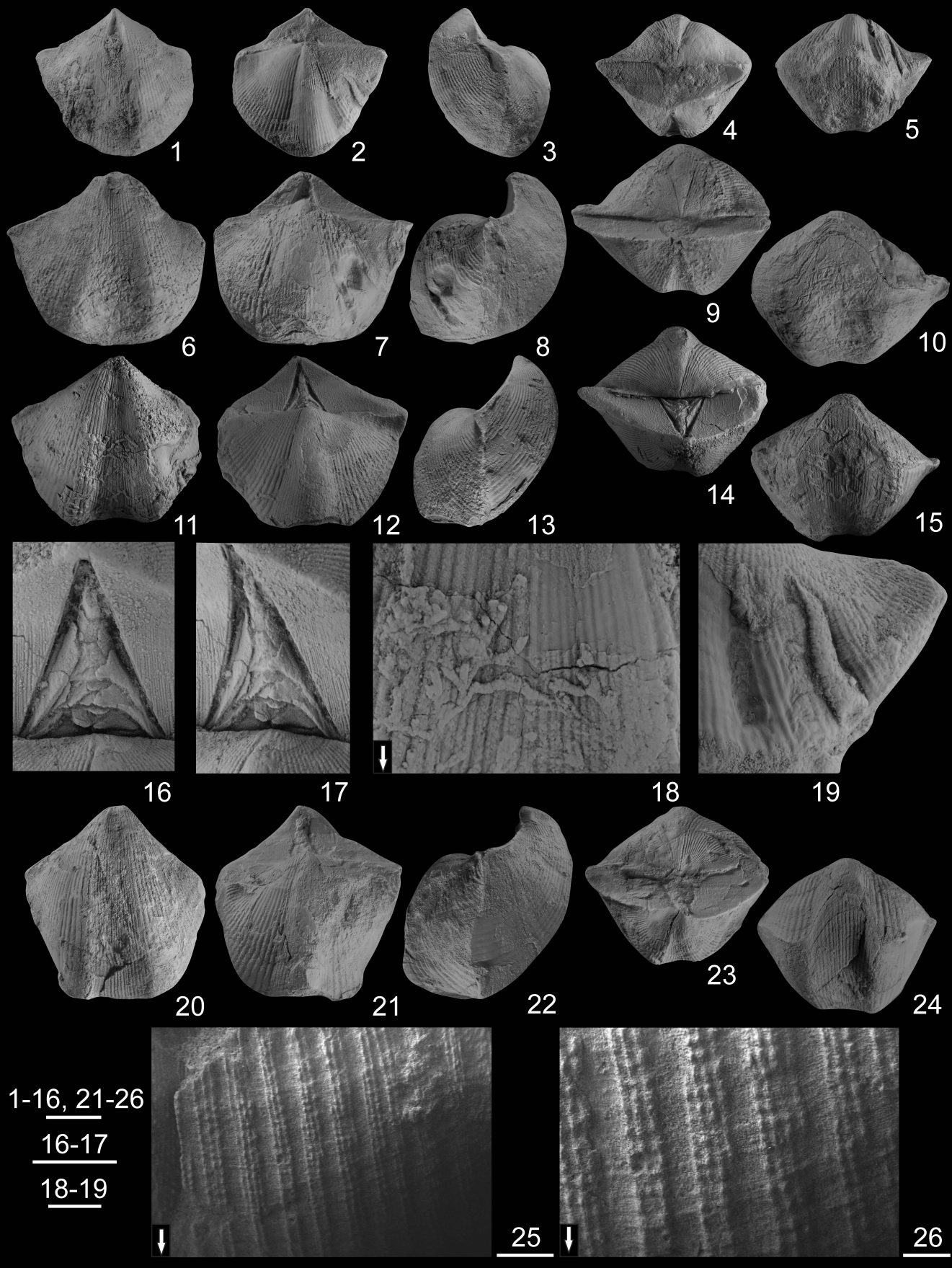


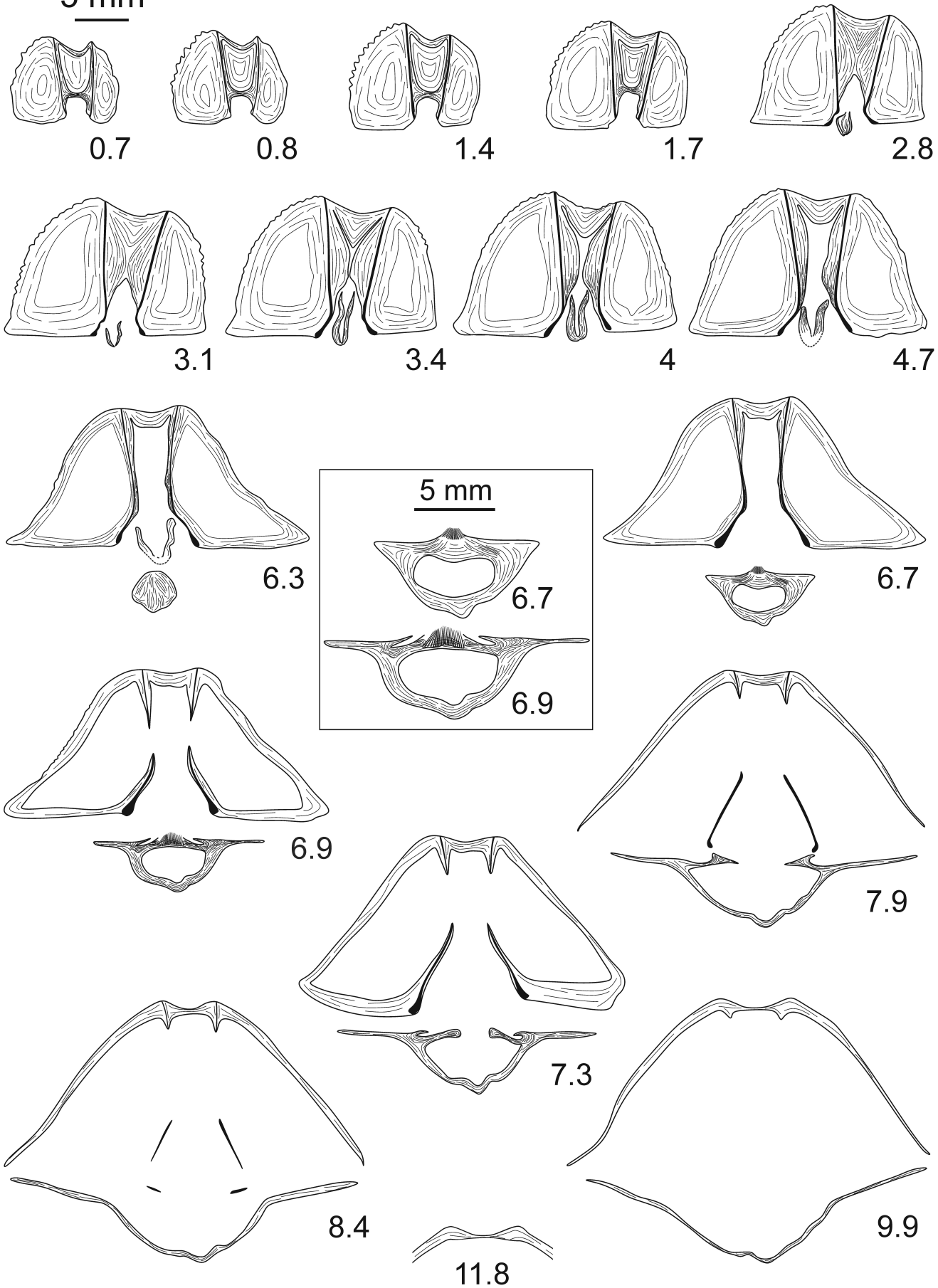
Faults  
 Border  
 Monastery  
 River

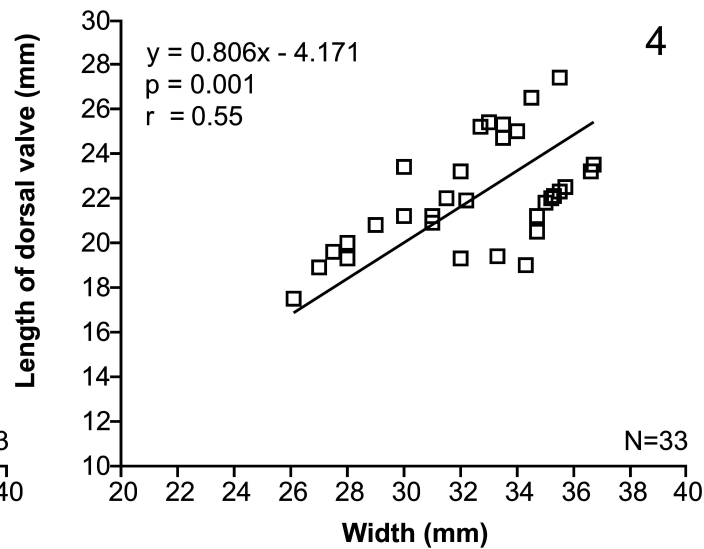
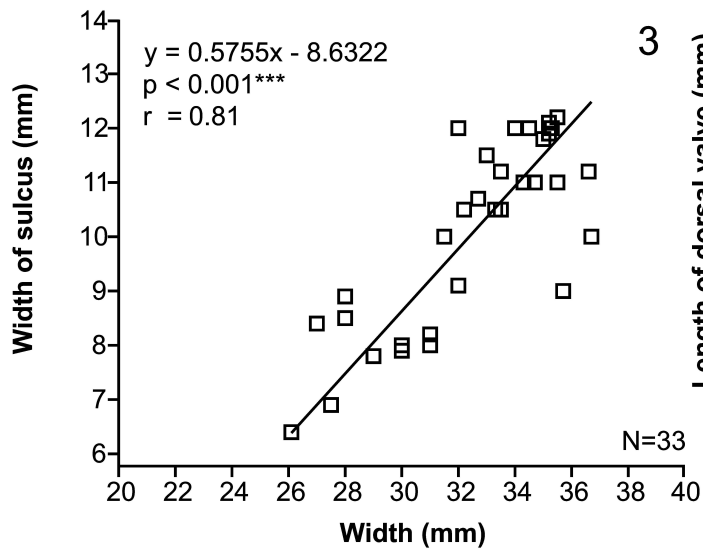
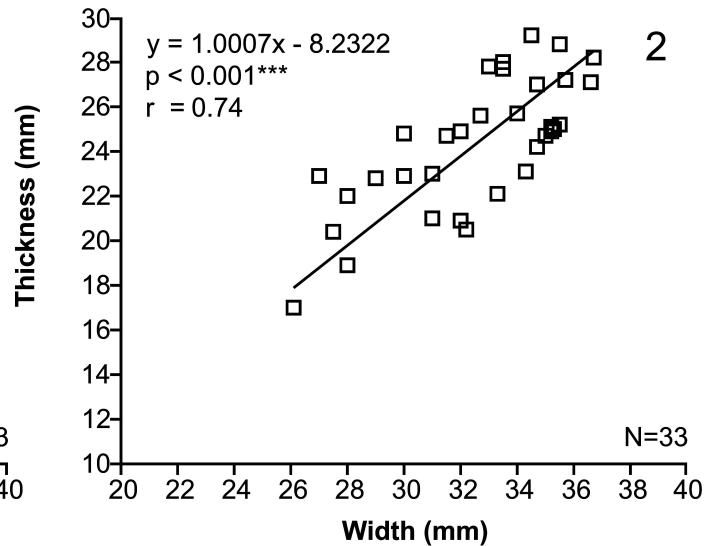
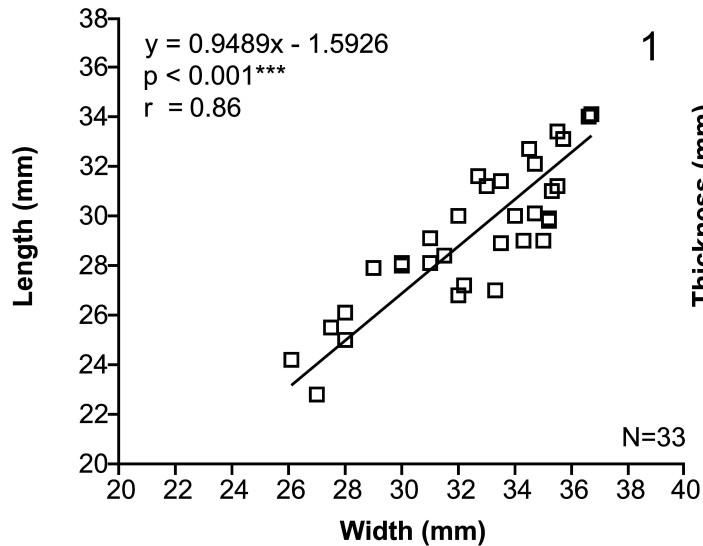
- |               |              |
|---------------|--------------|
| 1 Shamamidzor | 5 Djavank    |
| 2 Baghrsagh   | 6 Noravank   |
| 3 Ertych      | 7 Gyumushlug |
| 4 Danzik      |              |

| Stage     | Substage | Horizons         | Brachiopod zones   |  |  | Conodont zones  |   |                                 |                |
|-----------|----------|------------------|--|--|--|---|---|---------------------------------|----------------|
|           |          | Arakelyan (1964) | Abrahamyan (1957)  | Grechishnikova et al. (1980)   | Rzhonsnitskaya and Mamedov (2000)  | Local (Aristov, 1994)                                       | Standard (Ziegler and Sandberg, 1990)                         |                                 |                |
| Famennian | lower    | Ertych           | <i>Cyrtospirifer orbelianus</i> (*)  | <i>Mesoplica meisteri</i>  | <i>Cyrtopsis orbelianus</i> –<br><i>Cyrtopsis armenicus</i> (**)         | <i>Polygnathus brevilaminus</i><br><i>Icriodus cornutus</i> | Um  |                                 |                |
|           |          | Noravank         |  |  |  |   | <i>Mesoplica meisteri</i> –<br><i>Cyrtospirifer asiaticus</i> | <i>Polygnathus brevilaminus</i> | U<br>M<br>L    |
| Frasnian  | upper    | Baghrsagh        | <i>Cyrtospirifer lonsdalli</i> ,<br><i>Productella herminae</i> ,<br><i>Camarotoechia radiata arpaensis</i> and five other species | <i>Cyrtospirifer subarchiaci</i> –<br><i>Cyphoterorhynchus arpaensis</i> | Unzoned  | Unzoned   | linguiformis  |                                 |                |
|           |          |                  |  |  |  |   |   |                                 | rhenana U<br>L |
|           | middle   |                  |  |  |  |   |   |                                 | jamieae        |
|           |          |                  |  |  |  |   |   |                                 | hassi U<br>L   |
|           | lower    |                  |  |  |  |   | punctata  |                                 |                |
|           |          |                  |  |  | <i>Cyrtospirifer subarchiaci</i> –<br><i>Cyphoterorhynchus arpaensis</i> | <i>Ancyrodella rotunbiloba</i>                              | transitans  |                                 |                |
| Giv.      | up.      |                  |  |  |  | <i>Ancyrodella binodosa</i>                                 | falsiovalis U<br>L  |                                 |                |

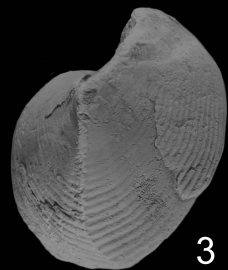


5 mm

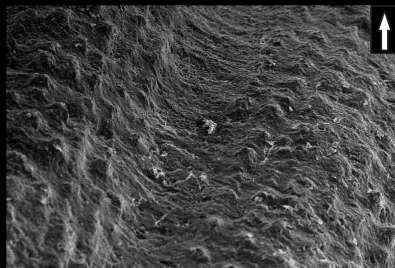
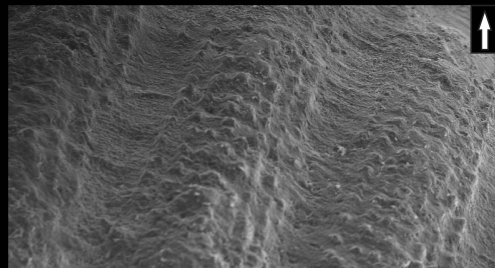
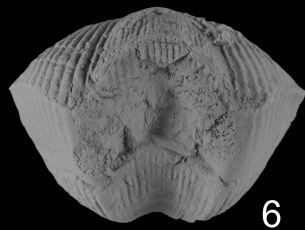




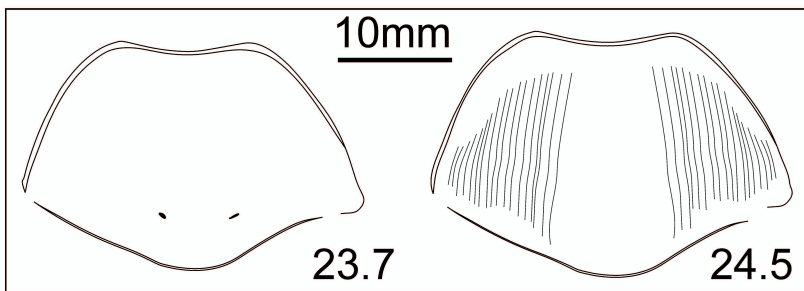
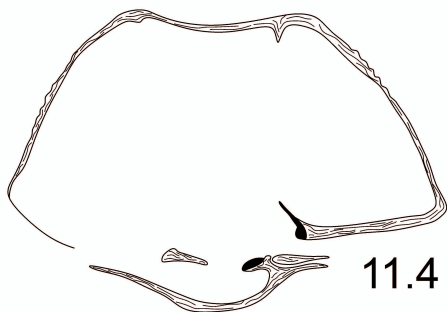
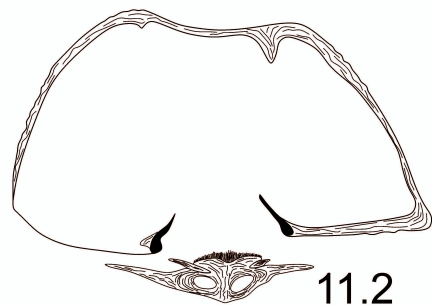
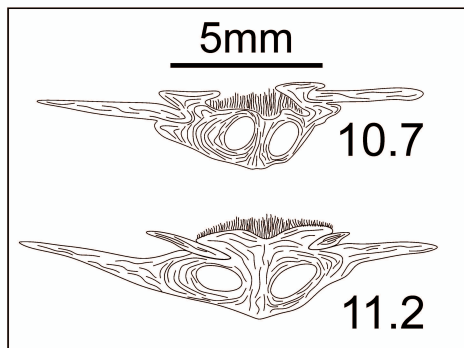
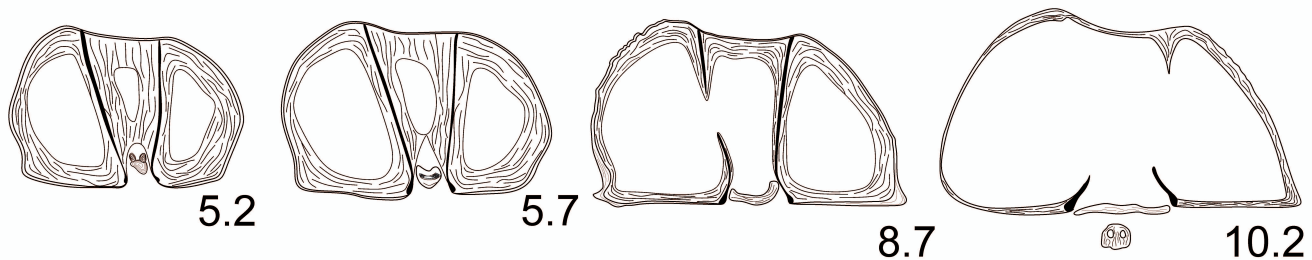




1-6

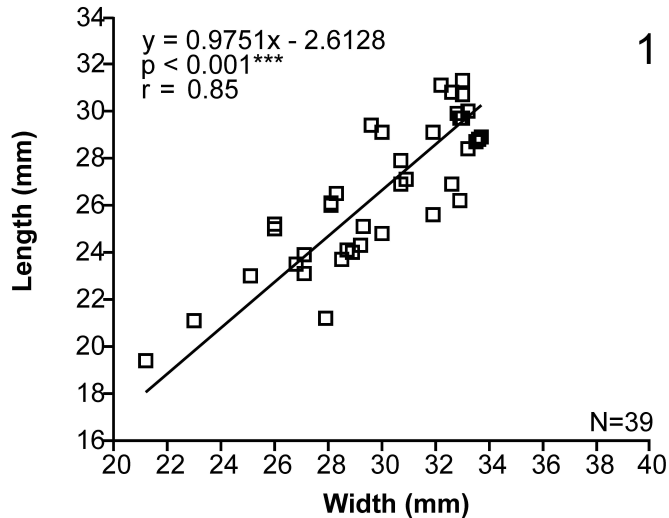


5mm

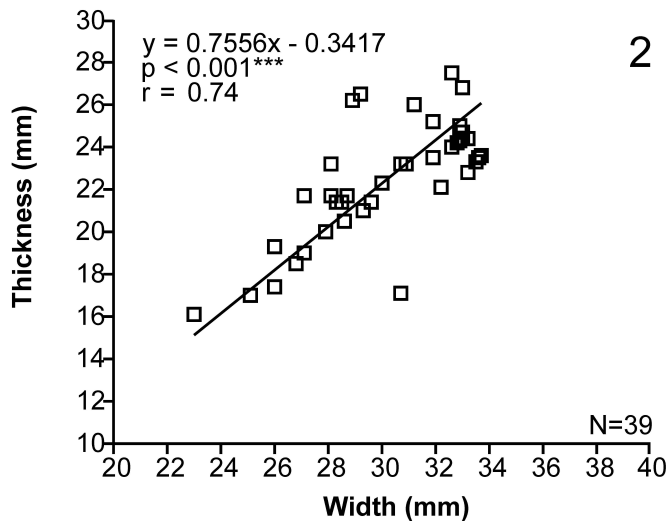




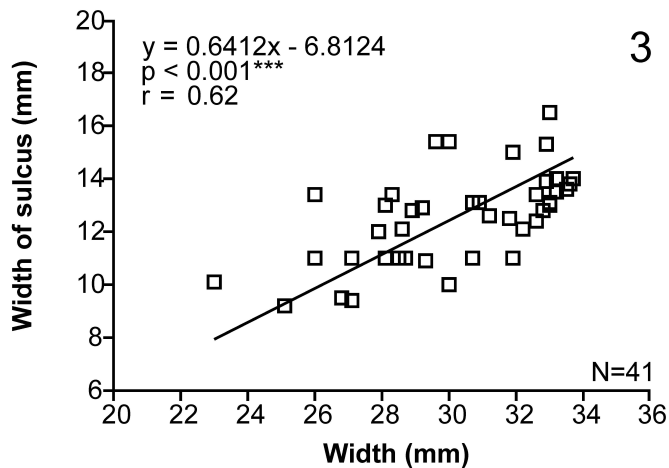
1



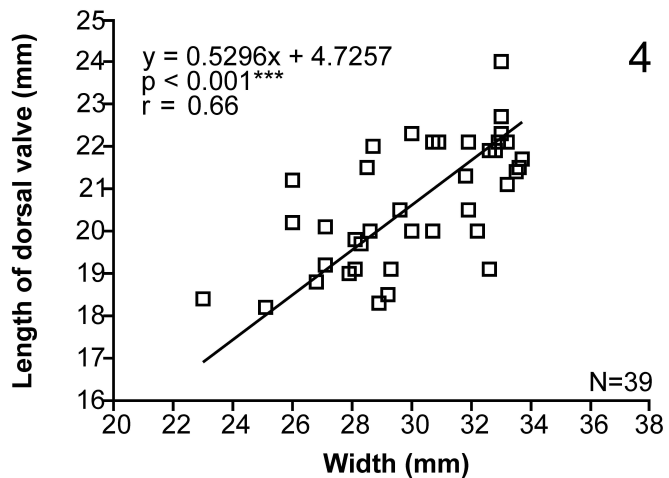
2

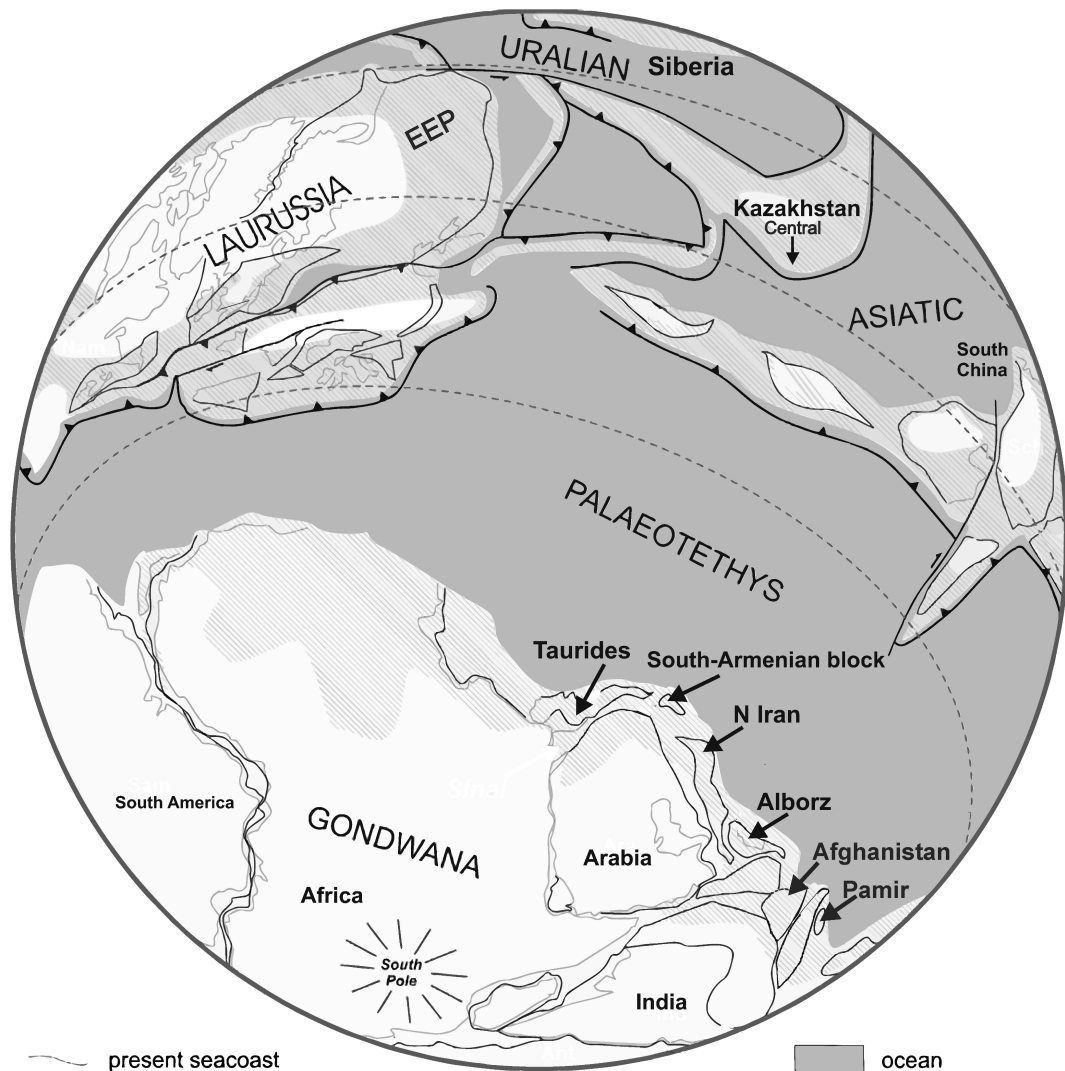


3



4





- present seacoast
- terrane boundary
- active margin

- ocean
- platform
- land