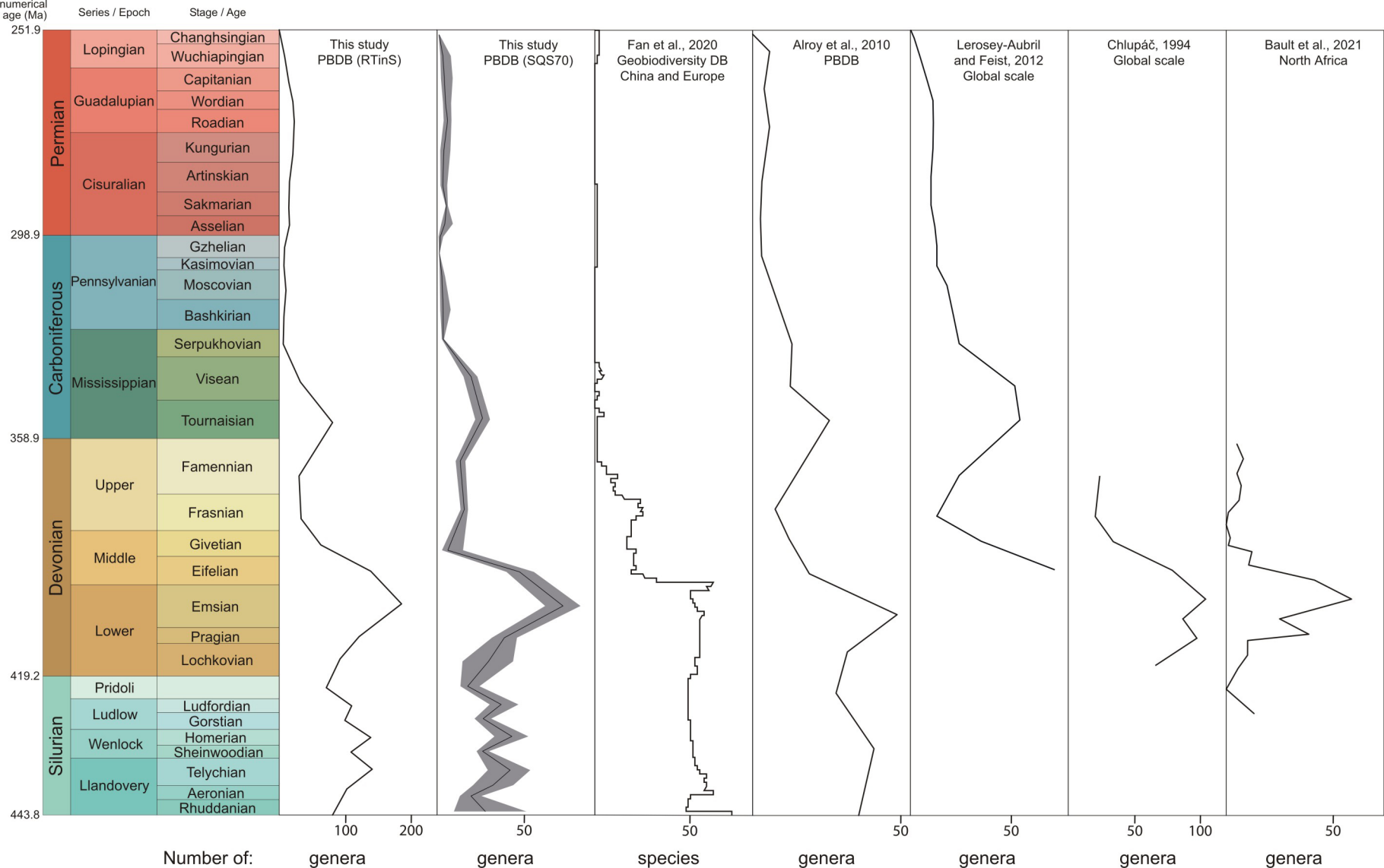
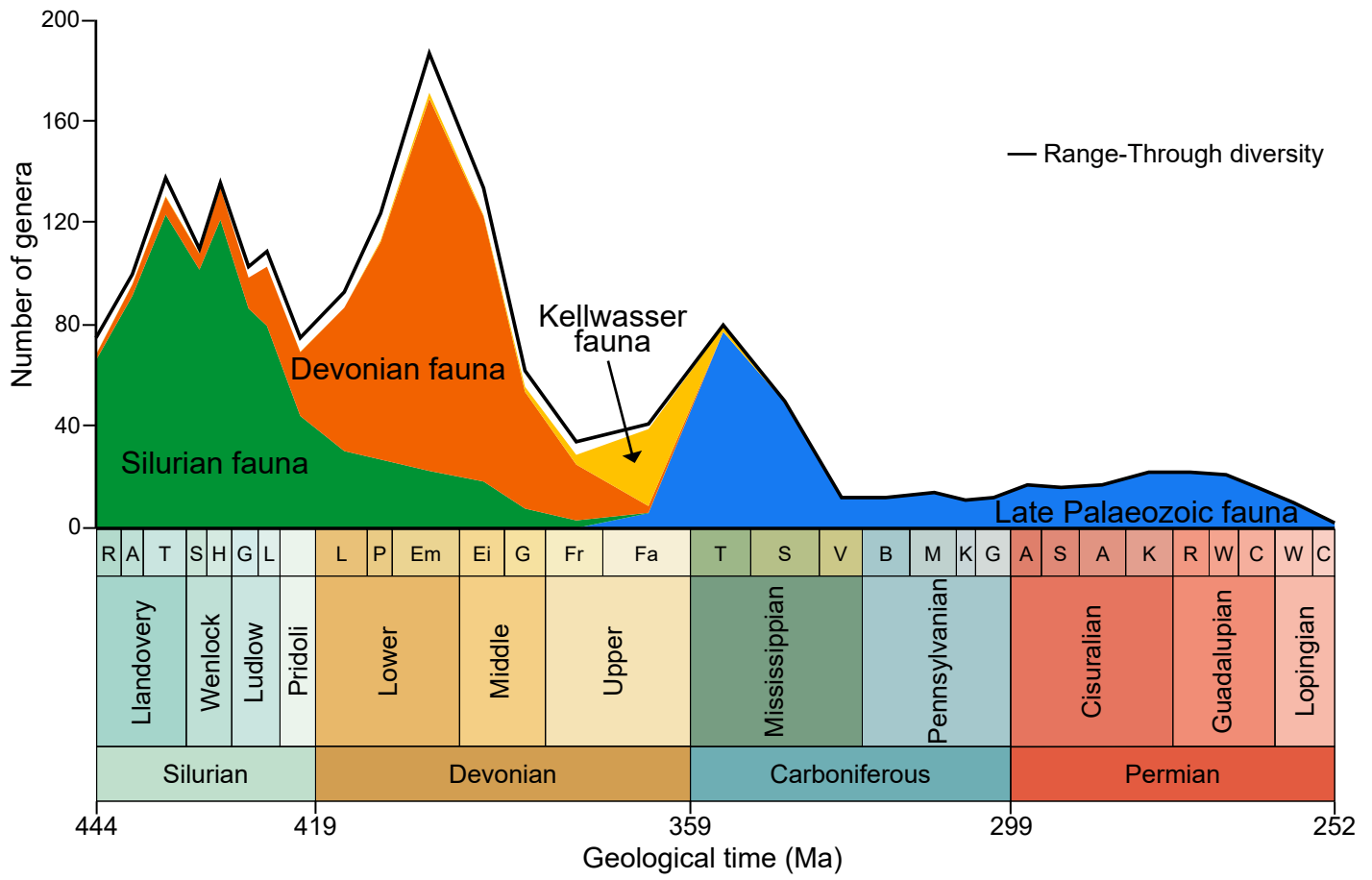
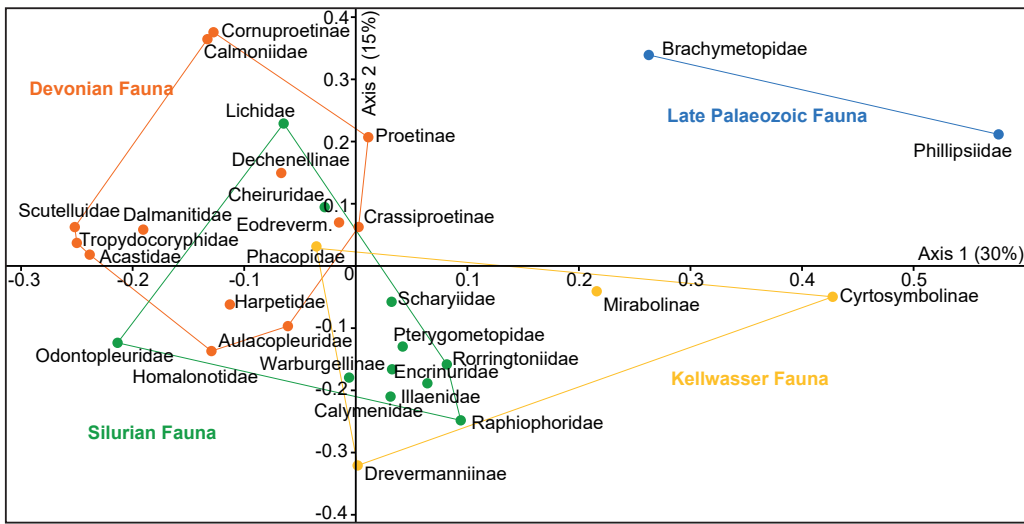
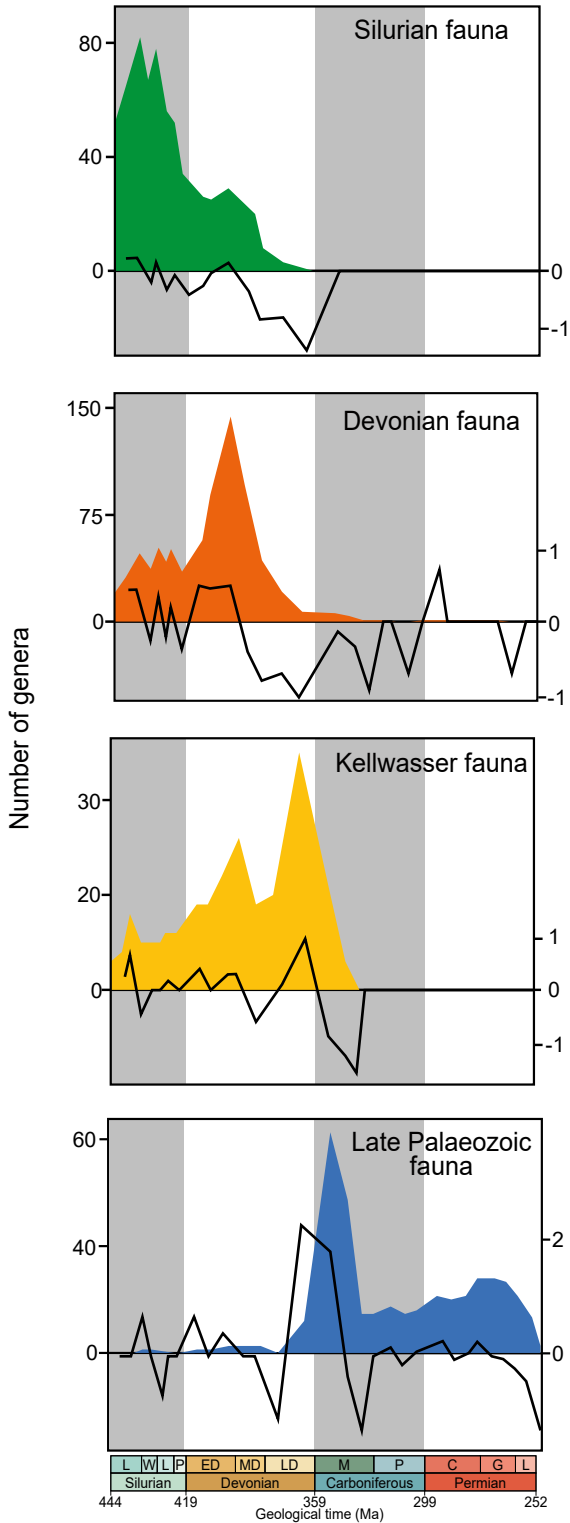


251.9
259.1
272.95
298.9
323.2
358.9
419.2
423.0
425.6
427.4
443.8
458.4
470.0
485.4
497.0
509.0
521.0
MYA









Calymenidae
 Cheiruridae
 Encrinuridae
 Illaenidae
 Lichidae
 Odontopleuridae

Pterygometopidae
 Raphiophoridae
 Rorringtoniidae
 Scharyiidae
 Warbugellinae

Acastidae
 Aulacopleuridae
 Calmoniidae
 Cornuproetinae
 Crassiproetinae
 Dalmanitidae
 Dechenellinae

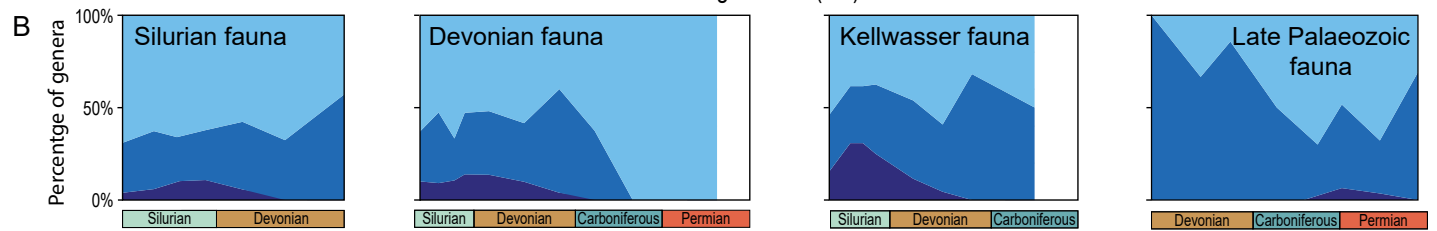
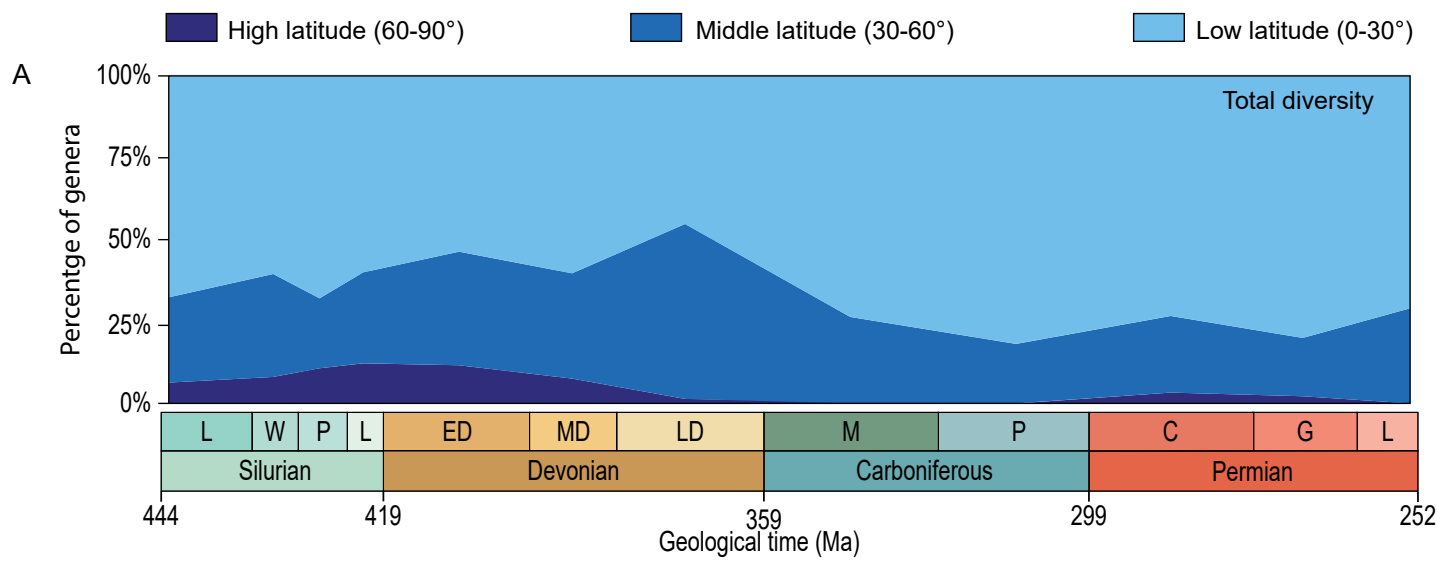
Eodrevermanniinae
 Harpetidae
 Homanolotidae
 Proetinae
 Scutelluidae
 Tropydocoryphidae

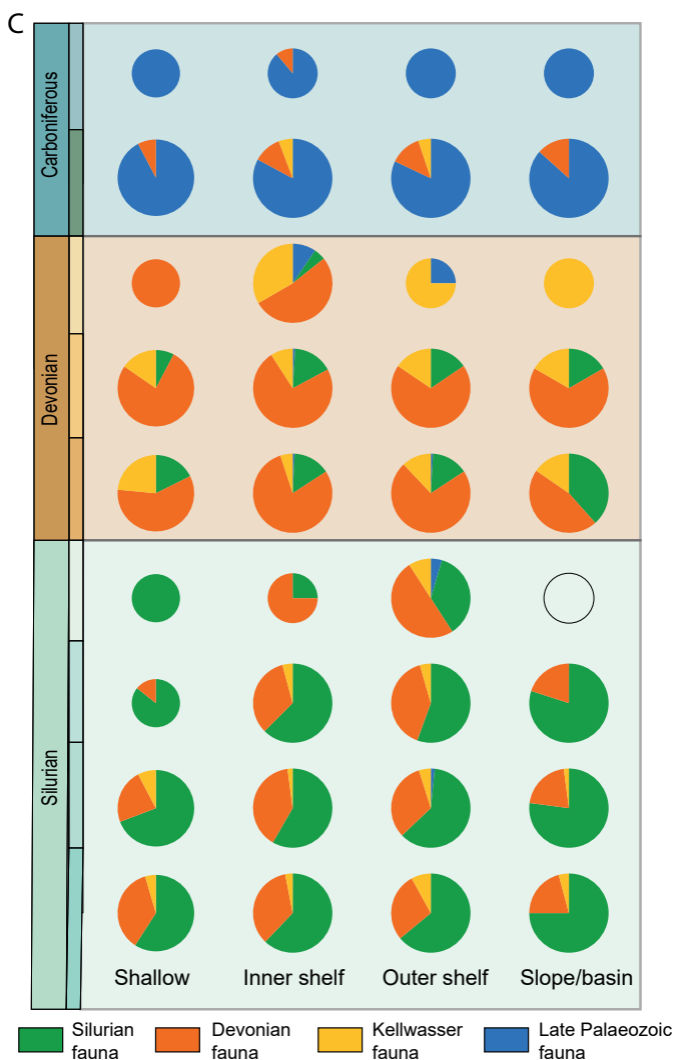
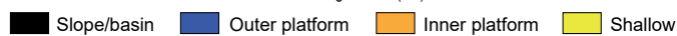
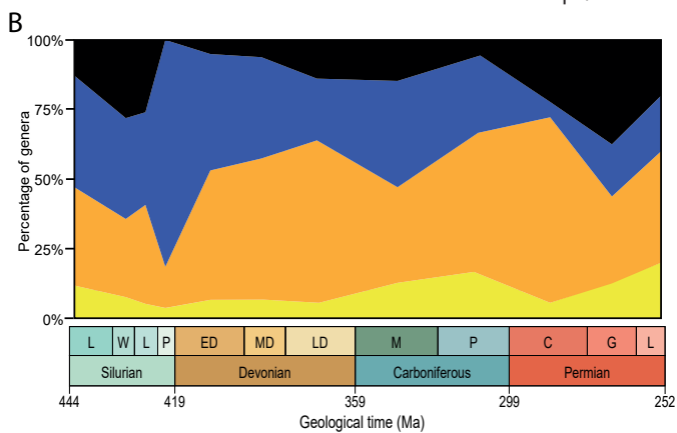
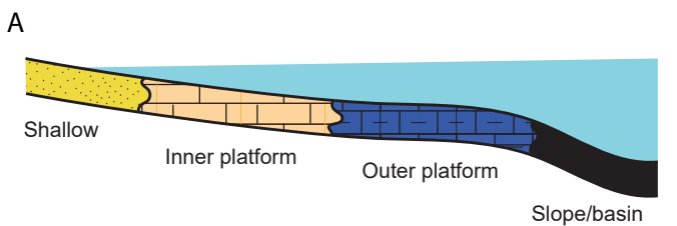
Cyrtosymbolinae
 Drevermanniinae
 Mirabolinae
 Phacopidae

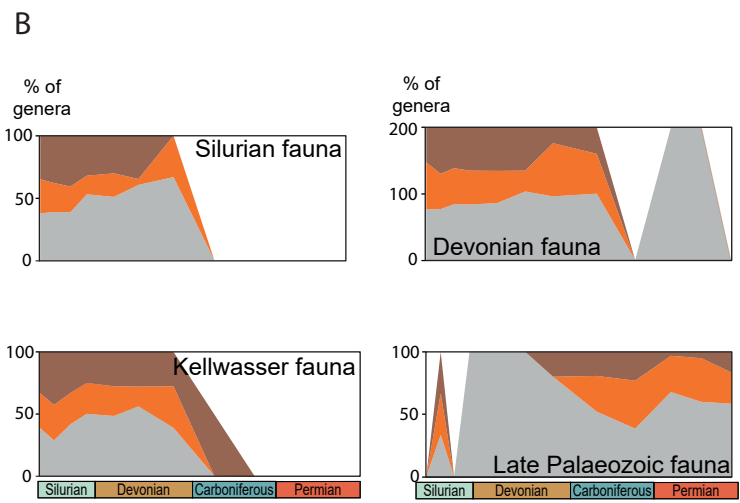
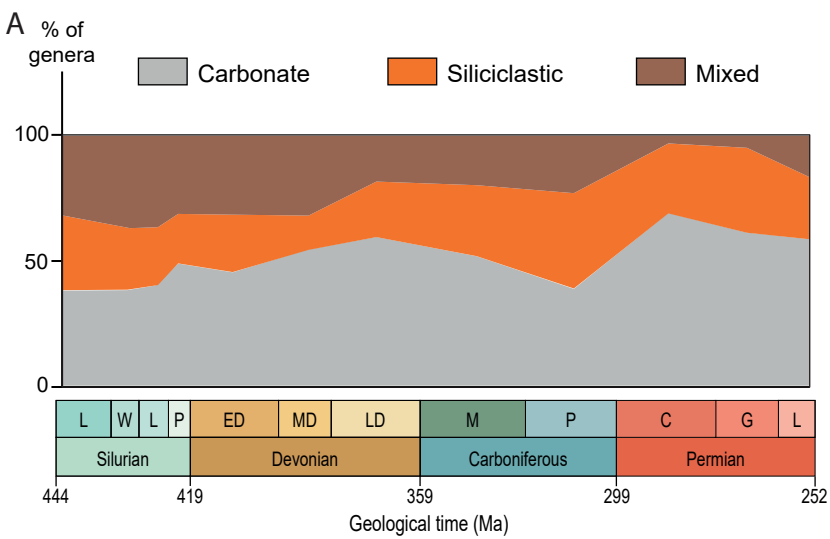
Bracymetopidae
 Phillipsiidae

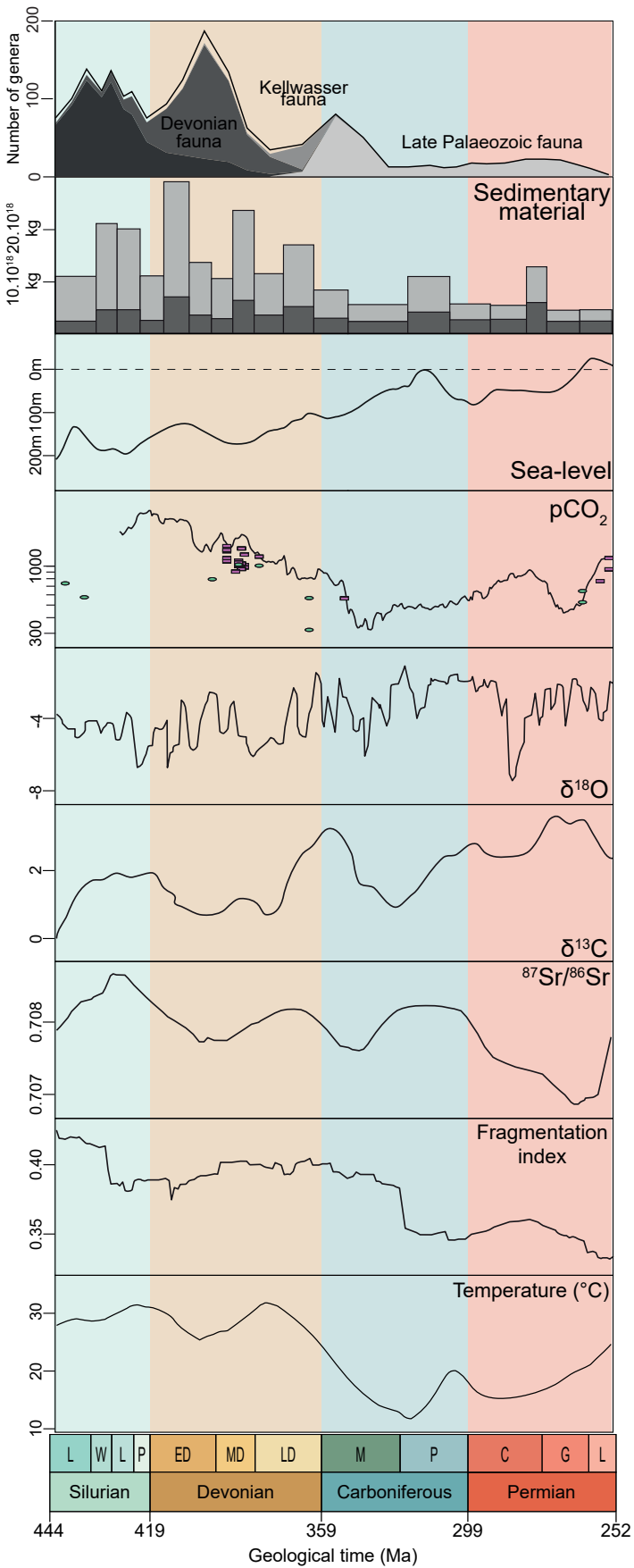
■ Diversity

— Turnover







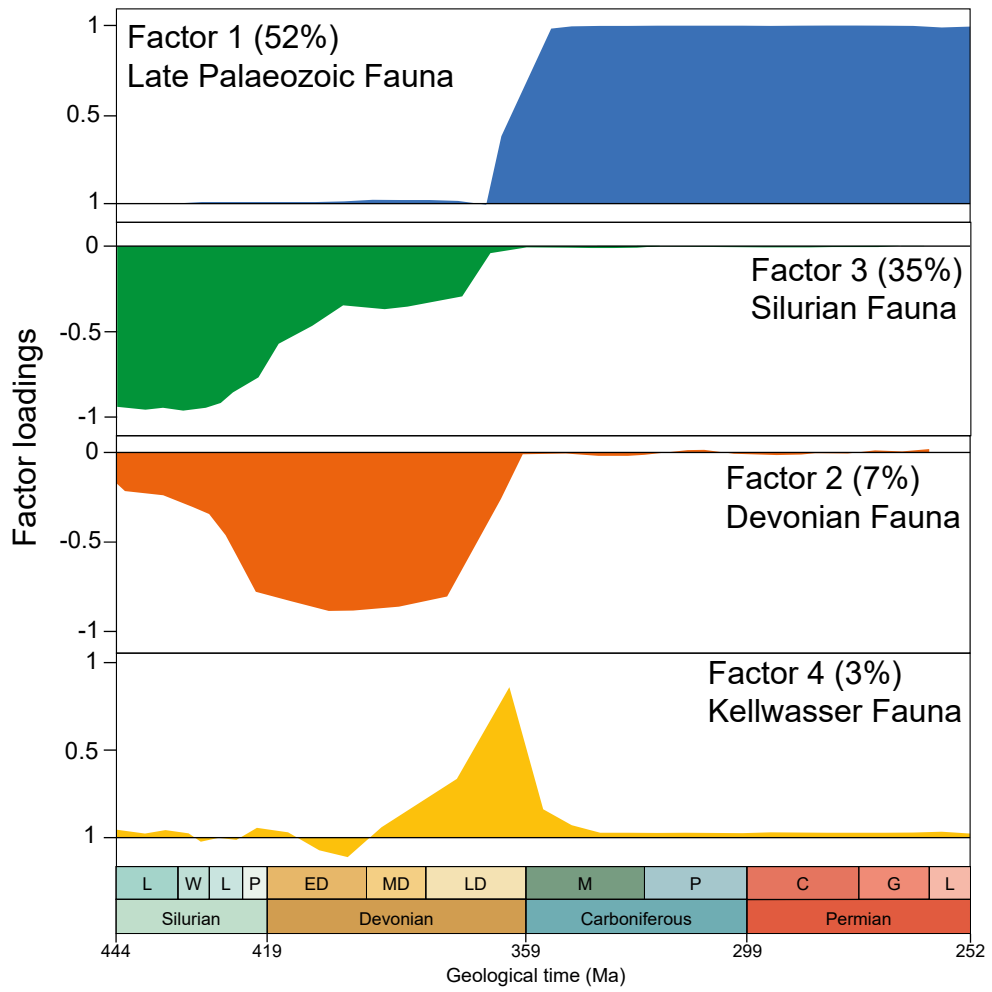


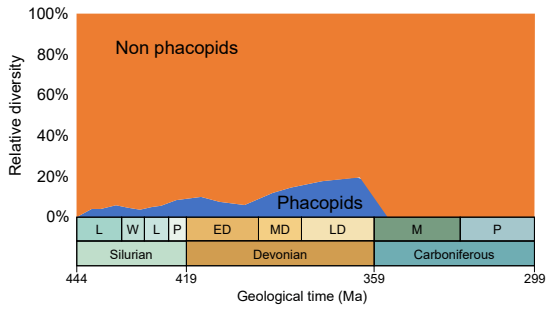
Latitude	PBDB
Low	0-30°N and S
Middle	30-60°N and S
High	60-90°N and S

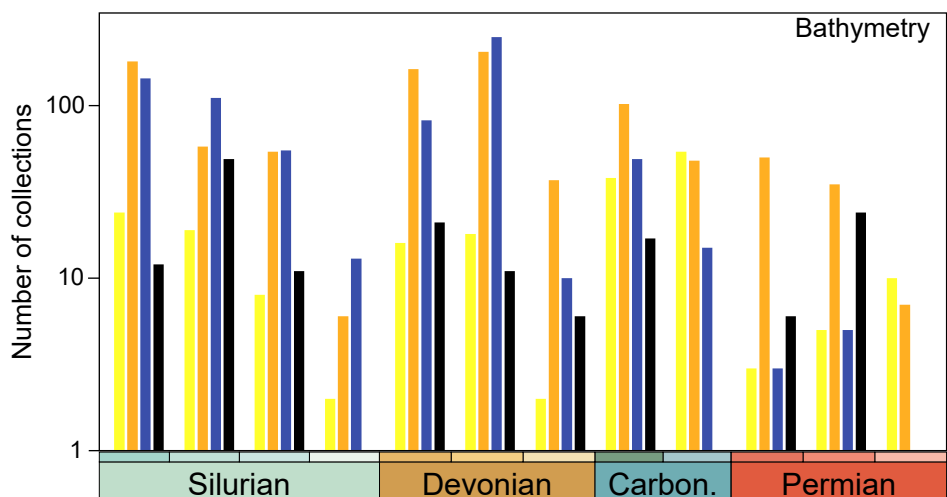
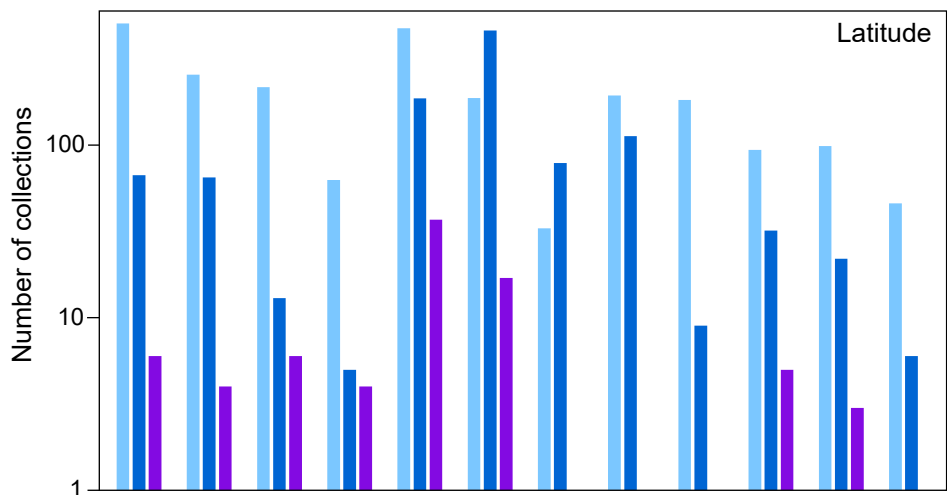
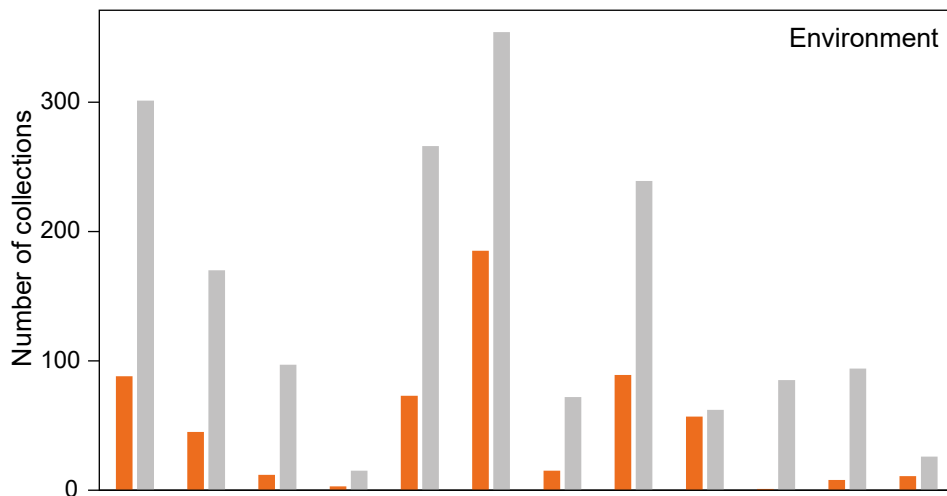
Lithology	PBDB
Carbonate	Floatstone, dolomite, framestone, wackestone, packstone, rudstone, mudstone, marl, lime-mudstone, grainstone, bindstone, « carbonate », « limestone, « reef rock »
Clastic	« shale », « siliciclastic », chert, siltstone, sandstone, schiste, quartzite, conglomerate, claystone, slate
Mixed	lithology1 = any carbonate lithology AND lithology2 = any clastic lithology (or vice versa)

Bathymetry	PBDB
Shallow	Coastal indet., delta front, delta plain, deltaic indet., foreshore, lagoonal, lagoonal/restricted shallow subtidal, paralic indet., prodelta, sand shoal
Inner platform	Marginal marine indet., open shallow subtidal, perireef or subreef, peritidal, reef, builder or bioherm, shallow subtidal indet., shoreface, transition zone/lower shoreface
Outer platform	Deep subtidal indet., deep subtidal ramp, deep subtidal shelf, offshore ramp, offshore shelf, platform/shelf-margin reef, offshore, offshore indet.
Slope/basin	Basinal (carbonate), basinal (siliceous), basinal (siliciclastic), deep-water indet., slope, slope/ramp reef
Reefal and indeterminate (not used)	Perireef or subreef, reef, builder or bioherm, slope, slope/ramp reef, platform/shelf-margin reef, submarine fan, terrestrial indet, marine indet.

PC	Eigenvalue	% Variance	% cumulated
1	16.109	51.97	51.97
2	10.92	35.23	87.20
3	2.105	6.79	93.99
4	0.790	2.55	96.54
5	0.320	1.03	97.57
6	0.228	0.74	98.31
7	0.156	0.5	98.81
8	0.107	0.35	99.16
9	0.068	0.22	99.38
10	0.058	0.19	99.57







Silurian Devonian Carbon. Permian

Scores	Factor 1	Factor 2	Factor 3	Factor 4
>2	Phillipsiidae (5.5) 81%	Odontopleuridae (3.2) Encrinuridae (2.4) Cheiruridae (2.1) 40%	Acastidae (2.5) Tropydocoryphidae (2.3) Phacopidae (2.2) 33%	Cyrtosymbolinae (4.4) Phacopidae (2.6) 46%
>1		Lichidae (1.8) Calymenidae (1.5) Scutelluidae (1.3) 64%	Proetinae (1.9) Dechenellinae (1.4) Scutelluidae (1.4) Encrinuridae (1.1) Aulacopleuridae (1.1) 65%	Tropydocoryphidae (1.2) 49%
>0,5	Brachymetopidae (0.6) 89%	Aulacopleuridae (0.7) Illaenidae (0.6) Proetinae (0.6) Warburgellinae (0.5) 77%	Calmoniidae (0.9) Cornuproetinae (0.8) Homalonotidae (0.8) Dalmanitidae (0.7) 81%	Scutelluidae (0.8) Drevermanniinae (0.7) Mirabolinae (0.6) Cornuproetinae (0.6) Calmoniidae (0.6) Aulacopleuridae (0.5) 79%

	Total		Silurian		Devonian		Kellwasser		Carboniferous	
	p	rho	p	rho	p	rho	p	rho	p	rho
dSr	0.85	-0.04	0.78	-0.08	0.26	-0.29	0.23	0.70	0.62	0.11
Sea-level	0.54	0.12	0.18	0.38	0.41	0.21	1	0	0.13	0.33
d13C	0.92	0.02	0.86	-0.06	0.20	-0.33	0.13	0.80	0.13	0.33
Sedimentation	0.10	0.31	0.08	0.48	0.10	0.42	0.52	-0.40	0.37	-0.20
Fragmentation	0.80	0.05	0.66	-0.13	0.90	0.03	0.09	0.90	0.04	0.44
Temperature	0.58	0.11	0.30	-0.30	0.57	-0.15	0.13	0.80	0.33	0.21