



**HAL**  
open science

## Structures in a rotating flow with free surface: simulations and experiments

Wen Yang, Ivan Delbende, Yann Fraigneau, Laurent Martin Witkowski

### ► To cite this version:

Wen Yang, Ivan Delbende, Yann Fraigneau, Laurent Martin Witkowski. Structures in a rotating flow with free surface: simulations and experiments. 20th International Couette-Taylor Workshop, Jul 2018, Marseille, France. hal-04410197

**HAL Id: hal-04410197**

**<https://hal.science/hal-04410197>**

Submitted on 22 Jan 2024

**HAL** is a multi-disciplinary open access archive for the deposit and dissemination of scientific research documents, whether they are published or not. The documents may come from teaching and research institutions in France or abroad, or from public or private research centers.

L'archive ouverte pluridisciplinaire **HAL**, est destinée au dépôt et à la diffusion de documents scientifiques de niveau recherche, publiés ou non, émanant des établissements d'enseignement et de recherche français ou étrangers, des laboratoires publics ou privés.

# Structures in a rotating flow with free surface: simulations and experiments.

Wen Yang<sup>1,2</sup>, Ivan Delbende<sup>3,4</sup>, Yann Fraigneau<sup>4</sup>, Laurent Martin Witkowski<sup>3,4</sup>

<sup>1</sup> Sorbonne Université, Collège Doctoral, F-75005 Paris, France

<sup>2</sup> FAST, UMR 7608, Parc-Club Orsay Université, F-91405 Orsay Cedex, France

<sup>3</sup> Sorbonne Université, Faculté des Sciences et Ingénierie, UFR d'Ingénierie, F-75005 Paris, France

<sup>4</sup> LIMSI, CNRS, Bât. 507, rue du Belvédère, F-91405 Orsay Cedex, France

We are interested in the free surface rotating flow driven by the rotation of the bottom in an open cylinder with radius  $R$ . Given an initial filling depth  $H$ , increasing the rotation disk frequency  $f_d$  breaks the flow axisymmetry. Two kinds of instability patterns can be observed: a modal structure with almost no free surface deformation (Fig. 1a) similar to those observed in [3] at intermediate Reynolds number values; a pattern of rotating polygons at high Reynolds numbers (Fig. 1b) with large free surface deformations [4]. In the present work, we carry out a detailed study of the flow structure for the intermediate Reynolds number regime by characterizing the influence of Froude number, aspect ratio and Reynolds number. The ultimate goal is to understand if the structures prevailing in the two regimes are related.

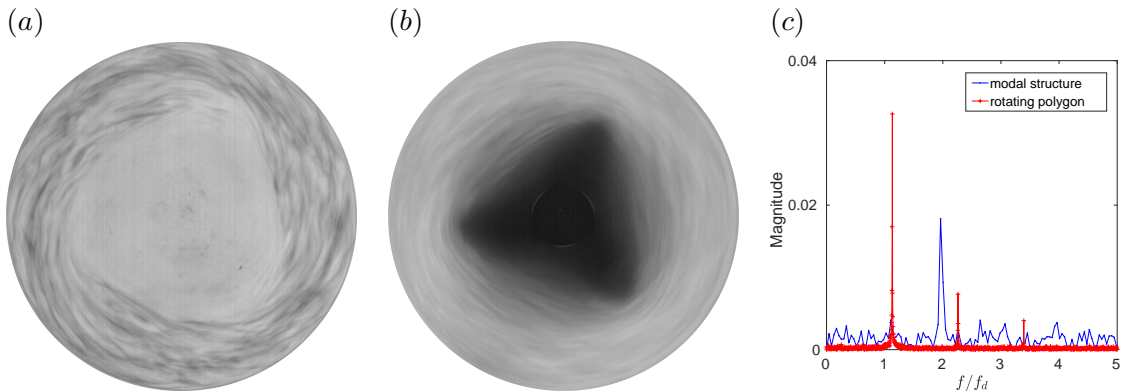


Figure 1: (a)-(b) Top view of the experiment using kalliroscope to visualise the flow structure ( $H = 26$  mm,  $R = 140$  mm). (a): azimuthal mode  $m = 3$  for  $f_d = 14.6$  rpm (no surface deformation is observed). (b): rotating triangle with a dry core at  $f_d = 139$  rpm. (c): typical spectrum of the azimuthal velocity component [probe location  $(r, z) = (112, 13)$  mm].

The intermediate Reynolds number regime has been investigated using several numerical techniques – computations of steady solutions, mean unsteady two-dimensional and three-dimensional direct simulations – as well as Laser-Doppler Velocimetry measurements. Simulations reveal the structure of a toroidal flow located at the periphery of a central solid body rotation region. This flow cell is found bordered by four layers in the meridional plane, a bottom layer on the disk, a side layer along the wall, a core layer separating the solid body rotation (discussed also in [1]) and a layer at the free surface. The Froude number that

quantifies surface deformation and the Reynolds number are shown to have little effect on the flow structure when the Reynolds number is sufficiently large. By increasing the aspect ratio, we find that the toroidal flow is composed of an upper sub-region with sinuous core layer and a mostly  $z$ -independent lower region. The mean flow and the rms of fluctuations in 3D simulations obtained through space and time averaging are compared with LDV measurements. A fair agreement is obtained for azimuthal and axial velocity distributions, except some local discrepancies.

Preliminary experiments show that the modal structure at intermediate Reynolds number is robust over a large range of  $f_d$  as long as the free surface does not touch the bottom disk. The spectrum shown in figure 1(c) indicates that this instability is observed always at a frequency close to  $2f_d$  before moving abruptly to  $1.13f_d$  when the rotating triangle occurs. Yet, the transition between the two regimes seems complex and depends on the protocol used to increase the disk speed [2].

---

## References

- [1] K. Iga, *Axisymmetric flow in a cylindrical tank over a rotating bottom. Part I. Analysis of boundary layers and vertical circulation*, Fluid Dyn. Res., **49(6)**:065502, 2017.
- [2] J. Mougel, *Ondes et instabilités dans les écoulements tournants à surface libre*, PhD thesis, 2014.
- [3] S. Poncet and M. Chauve, *Shear-layer instability in a rotating system*, J. Flow Visual. Image Process., **14(1)**:85-105, 2007.
- [4] G. H. Vatistas, *A note on liquid vortex sloshing and Kelvins equilibria*, J. Fluid Mech., **217**:241-248, 1990.