



**HAL**  
open science

## **Perinatal programming of intestinal homeostasis following exposure to high fat diet in male rats offspring.**

Marion Guibourdenche, Hiba El Khayat El Sabbouri, A. Bouzerara, Narimane Djekkoun, Hafida Khorsi-Cauet, Jean Guibourdenche, Véronique Bach, P.M. Anton, Jerome Gay-Queheillard

### ► **To cite this version:**

Marion Guibourdenche, Hiba El Khayat El Sabbouri, A. Bouzerara, Narimane Djekkoun, Hafida Khorsi-Cauet, et al.. Perinatal programming of intestinal homeostasis following exposure to high fat diet in male rats offspring.. NeuroGastro 2019, Sep 2019, LISBONNE, Portugal. hal-04409720

**HAL Id: hal-04409720**

**<https://hal.science/hal-04409720>**

Submitted on 26 Jan 2024

**HAL** is a multi-disciplinary open access archive for the deposit and dissemination of scientific research documents, whether they are published or not. The documents may come from teaching and research institutions in France or abroad, or from public or private research centers.

L'archive ouverte pluridisciplinaire **HAL**, est destinée au dépôt et à la diffusion de documents scientifiques de niveau recherche, publiés ou non, émanant des établissements d'enseignement et de recherche français ou étrangers, des laboratoires publics ou privés.

# Perinatal programming of intestinal homeostasis following exposure to a high fat diet in male rats offspring

Marion Guibourdenche<sup>1,2</sup>, Hiba El Khayat El Sabbouri<sup>1</sup>, Amina Bouzerara<sup>3</sup>, Narimane Djekkoun<sup>1</sup>, Hafida Khorsi-Cauet<sup>1</sup>, Jean Guibourdenche<sup>3</sup>, Véronique Bach<sup>1</sup>, Pauline M Anton<sup>2</sup>, Jérôme Gay-Quéheillard<sup>1</sup>.  
 1. PériTox, Périnatalité & Risques Toxiques, UMR-I 01, UPJV, Amiens, France  
 2. Equipe PETALES – EA 7519 - Unité Transformations & Agro-Ressources, UniLaSalle Beauvais, France  
 3. Biologie hormonale, CHU Cochin, Université Paris Descartes, AP-HP, Paris, France.

**Objective:** This study aimed at studying the effects of a peri-gestational exposure to an obesogenic diet with a prebiotic supplementation (inulin) on the anatomofunctional development of the digestive system and associated metabolic consequences of the growing male offspring.

**INTRODUCTION** Perinatal period is characterized by developmental phases with high sensitivity to the environmental factors. Among the risk factors, malnutrition or maternal obesity are now recognized to program children's metabolism and promote the occurrence of obesity or type 2 diabetes during postnatal life. This work was dedicated to the peri-gestational exposure of dams to an obesogenic diet (high fat diet, HFD) and the exploration of the prebiotic supplementation benefits

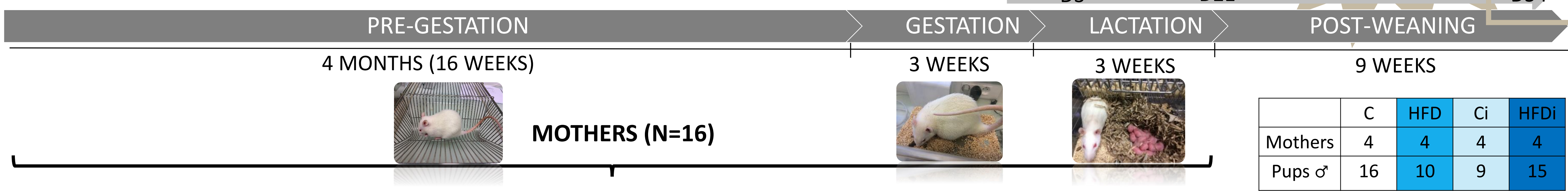
## HYPOTHESIS



1. Perinatal HFD : cause of  $\nearrow$  the occurrence of obesity, associated with metabolic disorders and disturbances of digestive function in male offsprings ?
2. Prebiotic: limitation of observed disorders induced by the HFD ?



## METHODS



**HIGH FAT DIET (HFD)**

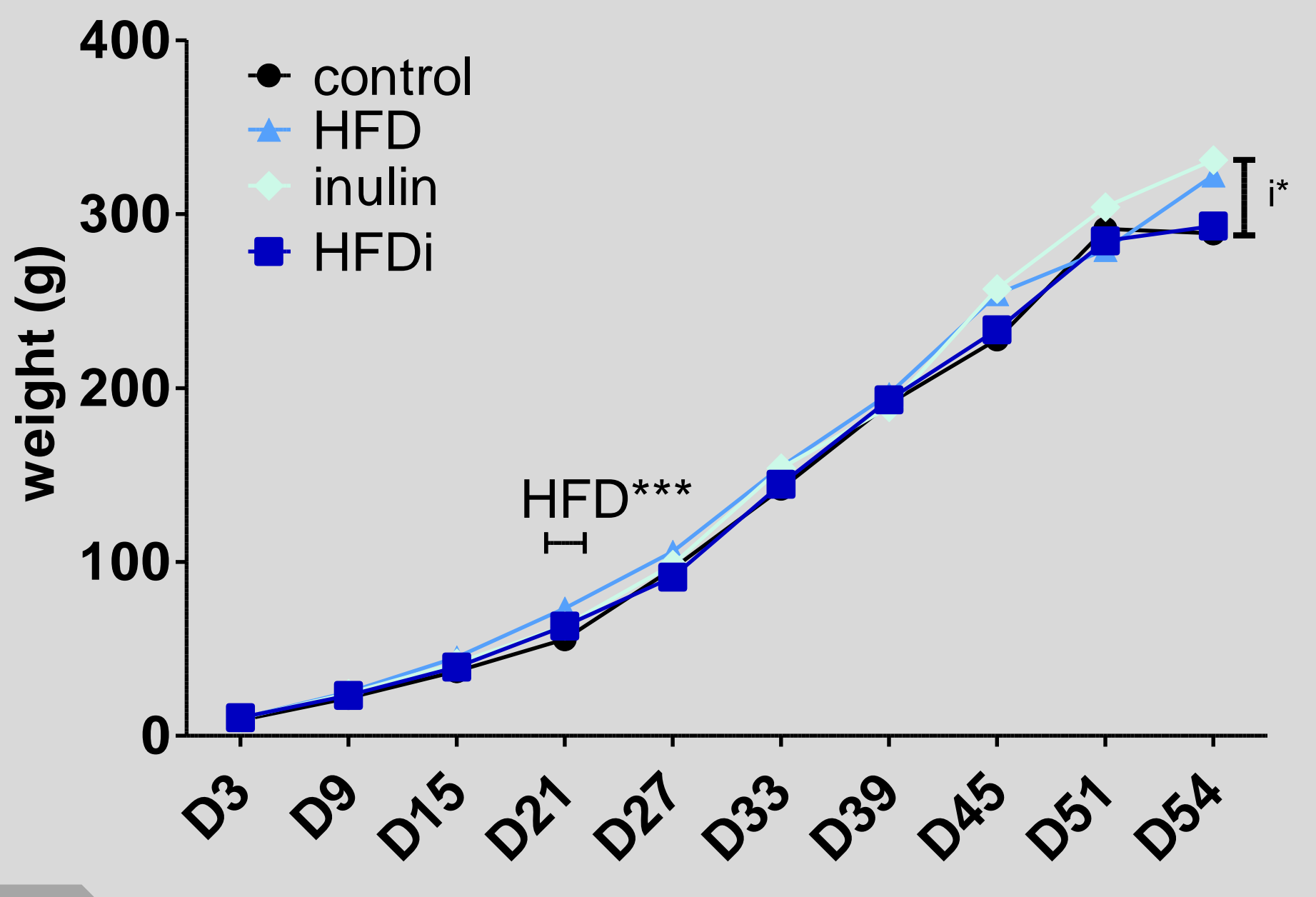
- 60% kcal fat
- 5.21 kcal /g
- D12492 SSMIFF Research Diets

**INULIN (i)**

- Food fiber ( $\beta$  2-1 fructane)
- Prebiotic effect

## RESULTS

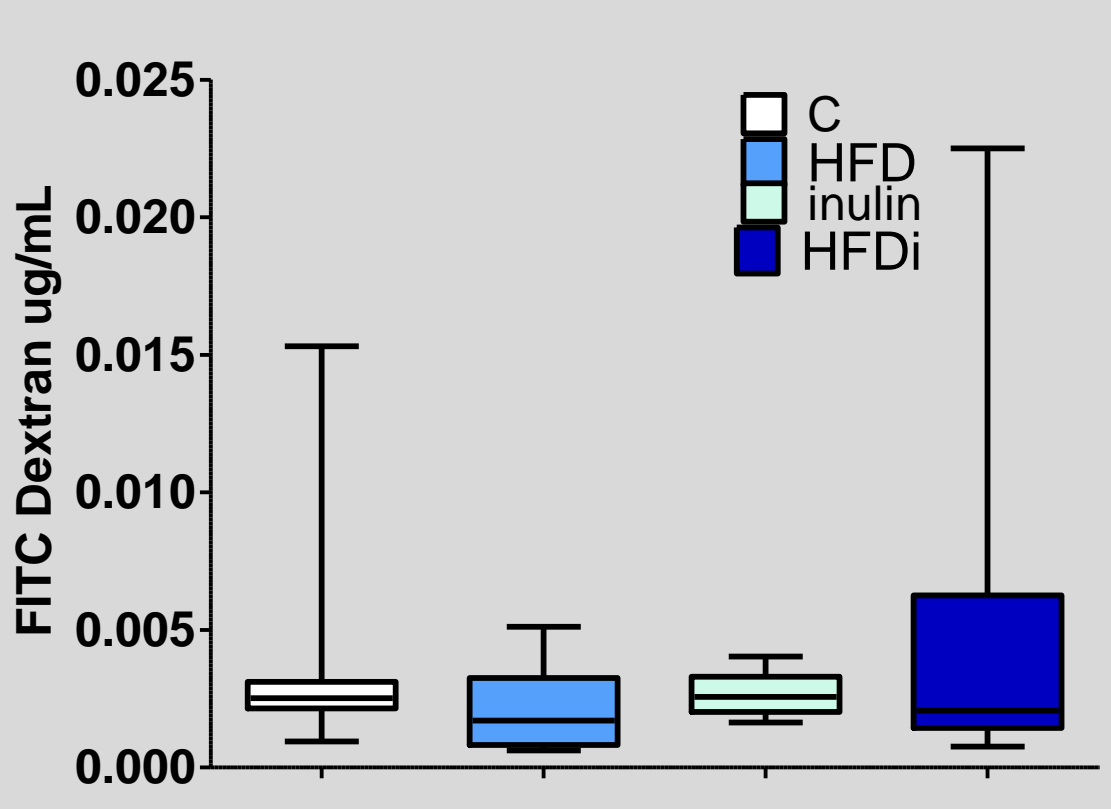
### WEIGHT



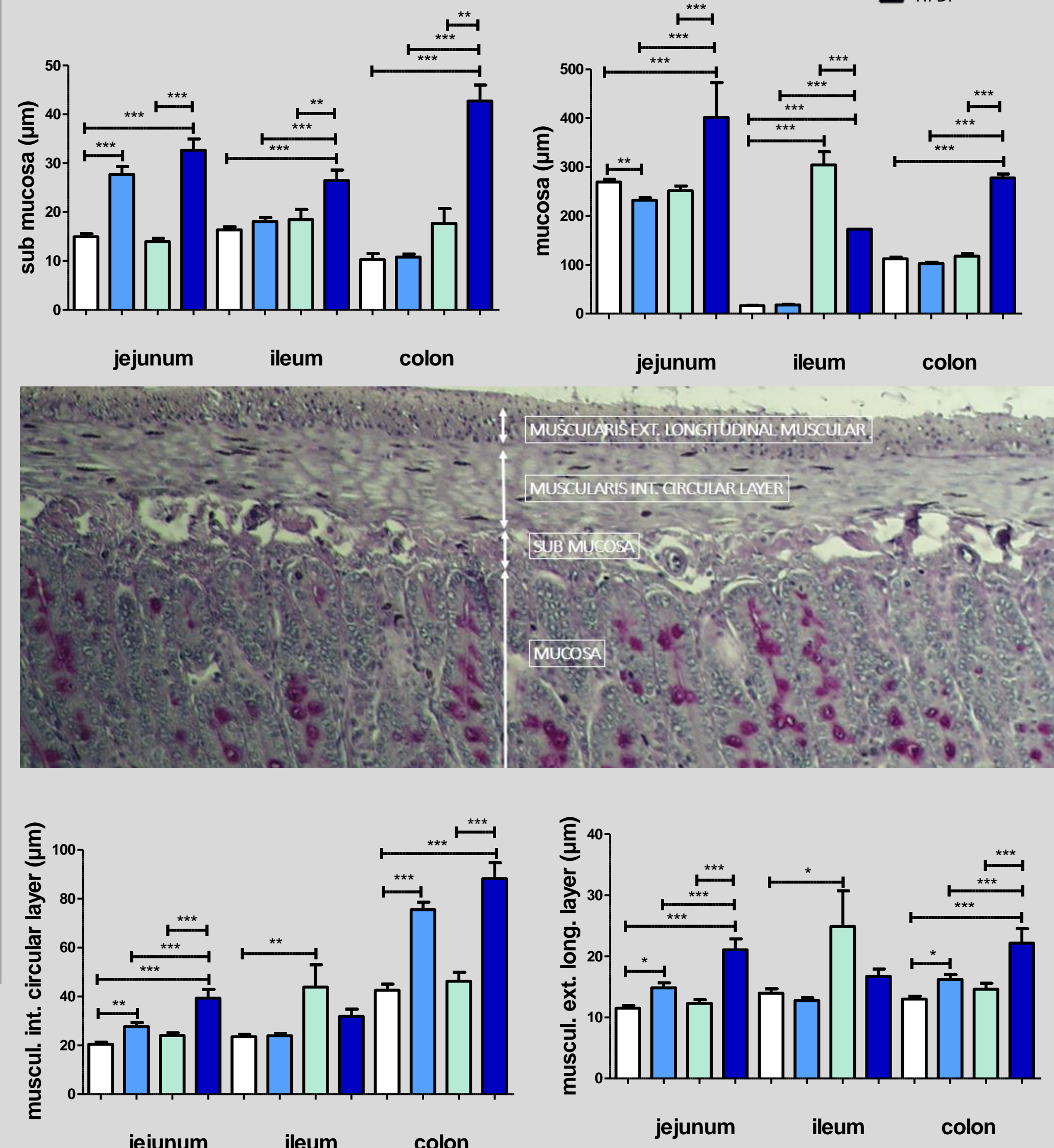
### METABOLIC ASSAYS

	HFD	Ci	HFDi
Total cholesterol (mmol/L)	$\emptyset$	$\emptyset$	$\emptyset$
TG (mmol/L)	$\emptyset$	$\nearrow^*$	$\emptyset$
HDL (mmol/L)	$\emptyset$	$\emptyset$	$\emptyset$
LDL (mmol/L)	$\emptyset$	$\searrow^{**}$	$\searrow^*$
Glucose (mmol/L)	$\nearrow$ ind	$\emptyset$	$\emptyset$
Insulin (uU/L)	$\emptyset$	$\emptyset$	$\emptyset$
IGF1/weight	$\emptyset$	$\emptyset$	$\emptyset$
Leptin	$\nearrow$ ind	$\emptyset$	$\emptyset$

### INTESTINAL PERMEABILITY



### INTESTINAL LAYERS THICKNESSES



### GENE EXPRESSION

	JEJUNUM	ILEUM	COLON
MUC2	HFD $\searrow^{***}$ with or without inulin	HFD $\searrow^*$ with inulin	HFD $\searrow^{***}$
MUC3	HFD $\searrow$ with * or without inulin**	$\emptyset$	HFD $\searrow^{***}$
TLR4	HFD $\nearrow$ ind with and without inulin	HFD $\searrow^*$ with inulin	HFD $\searrow^{***}$

### EPITHELIAL TIGHT JUNCTIONS PROTEINS

	JEJUNUM	ILEUM	COLON
CLAUD	Inulin $\searrow^{**}$	HFD $\nearrow^{**}$ with and without inulin	HFD $\nearrow^{**}$ with inulin
INE 4	Inulin $\nearrow^{**}$ on HFD pups	$\emptyset$	Inulin $\nearrow^{**}$ on HFD pups
OCCLU	HFD $\searrow^*$	$\emptyset$	HFD $\nearrow$ with*** and without inulin
DINE	Inulin $\nearrow^{**}$ on HFD pups	$\emptyset$	Inulin $\nearrow^{**}$ on HFD pups

RT PCR : Expression of genes coding for mucin 2 and 3 and TLR4 receptor proteins and proteins involved in tight junctions constitution (standardization gene: GAPDH)

COBAS Automaton (Roche) and Rat ELISA (Fisher Scientific Thermo Kit)

PAS coloration - Histological measurements using Image J software

Kruskal Wallis with Dunn's post test or ANOVA with Bonferroni's post test ; GraphPad Prism version 5.00 - \* p<0,05; \*\* p<0,01; \*\*\* p<0,001

## CONCLUSIONS

Pups from dams in contact with an HFD during the peri-gestational period presented:

- **Overweight** : a higher weight at young adult age (D21 until D60)
- Modification of the **intestinal epithelial permeability** : overexpression of tight junctions proteins
- Disturbance of **intestinal barrier function** : a reduced expression of MUC2 and MUC3 genes and alteration of TLR4 gene expression
- Impacts on **organs development and growth (digestive system)** :  $\nearrow$  of circular and longitudinal muscle layers thicknesses (jejunum and colon),  $\nearrow$  of submucosa thickness (jejunum and ileum) and  $\searrow$  of mucosa thickness (jejunum and colon).
- We suggest that HFD administration in the mothers (dams) might increase the occurrence of obesity and may cause alterations of digestive functions in the offsprings.

## THANKS

Animal team, PlatAnN animal facility platform, and Aurélie Corona, laboratory technician PériTox UMR-I-01, Amiens, France

Contact : Jerome.gay@u-picardie.fr