



**HAL**  
open science

# Apprentissage semi-supervisé pour la segmentation du réseau vasculaire cérébral : une étude comparative

Pierre Rougé, Nicolas Passat, Odysée Merveille

## ► To cite this version:

Pierre Rougé, Nicolas Passat, Odysée Merveille. Apprentissage semi-supervisé pour la segmentation du réseau vasculaire cérébral : une étude comparative. Colloque Français d'Intelligence Artificielle en Imagerie Biomédicale (IABM), Mar 2024, Grenoble, France. hal-04406684

**HAL Id: hal-04406684**

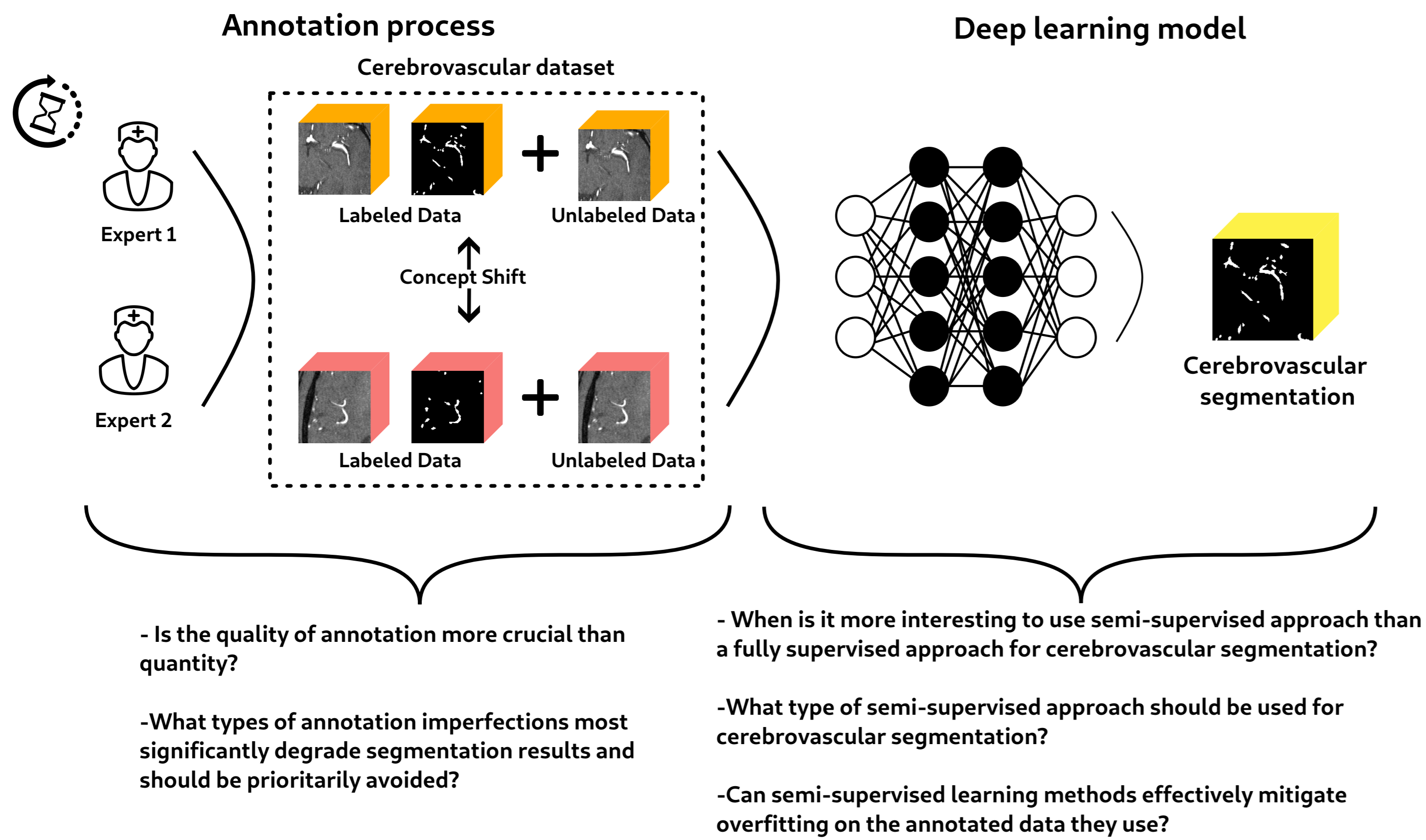
**<https://hal.science/hal-04406684v1>**

Submitted on 16 Apr 2024

**HAL** is a multi-disciplinary open access archive for the deposit and dissemination of scientific research documents, whether they are published or not. The documents may come from teaching and research institutions in France or abroad, or from public or private research centers.

L'archive ouverte pluridisciplinaire **HAL**, est destinée au dépôt et à la diffusion de documents scientifiques de niveau recherche, publiés ou non, émanant des établissements d'enseignement et de recherche français ou étrangers, des laboratoires publics ou privés.

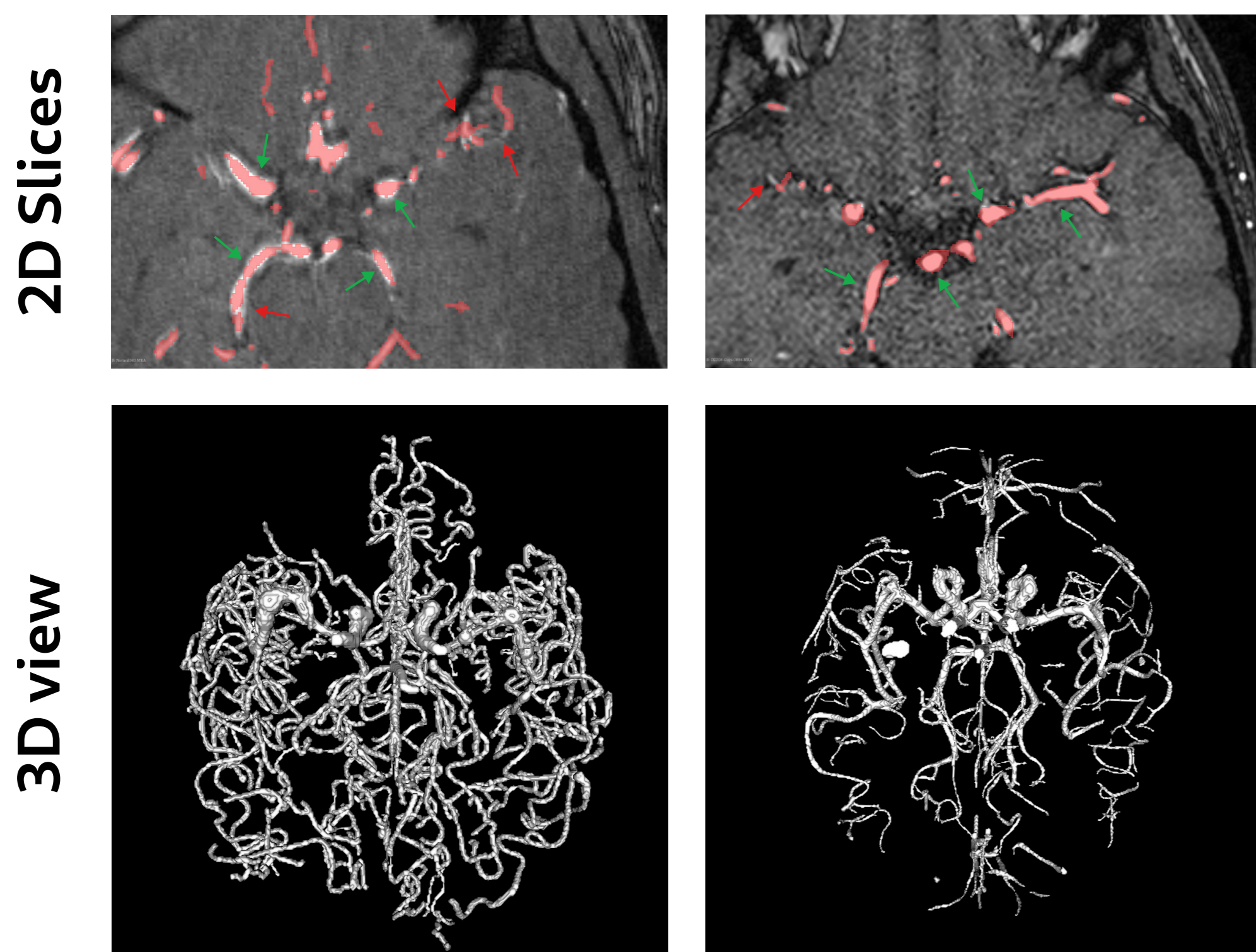
## Medical context



- Cerebrovascular annotations are **time-consuming** and **error-prone**.
- Also, **no guidelines exist for cerebrovascular annotations**. Thus, **concept-shift** between different dataset is a big bottleneck for the conception of robust segmentation methods.

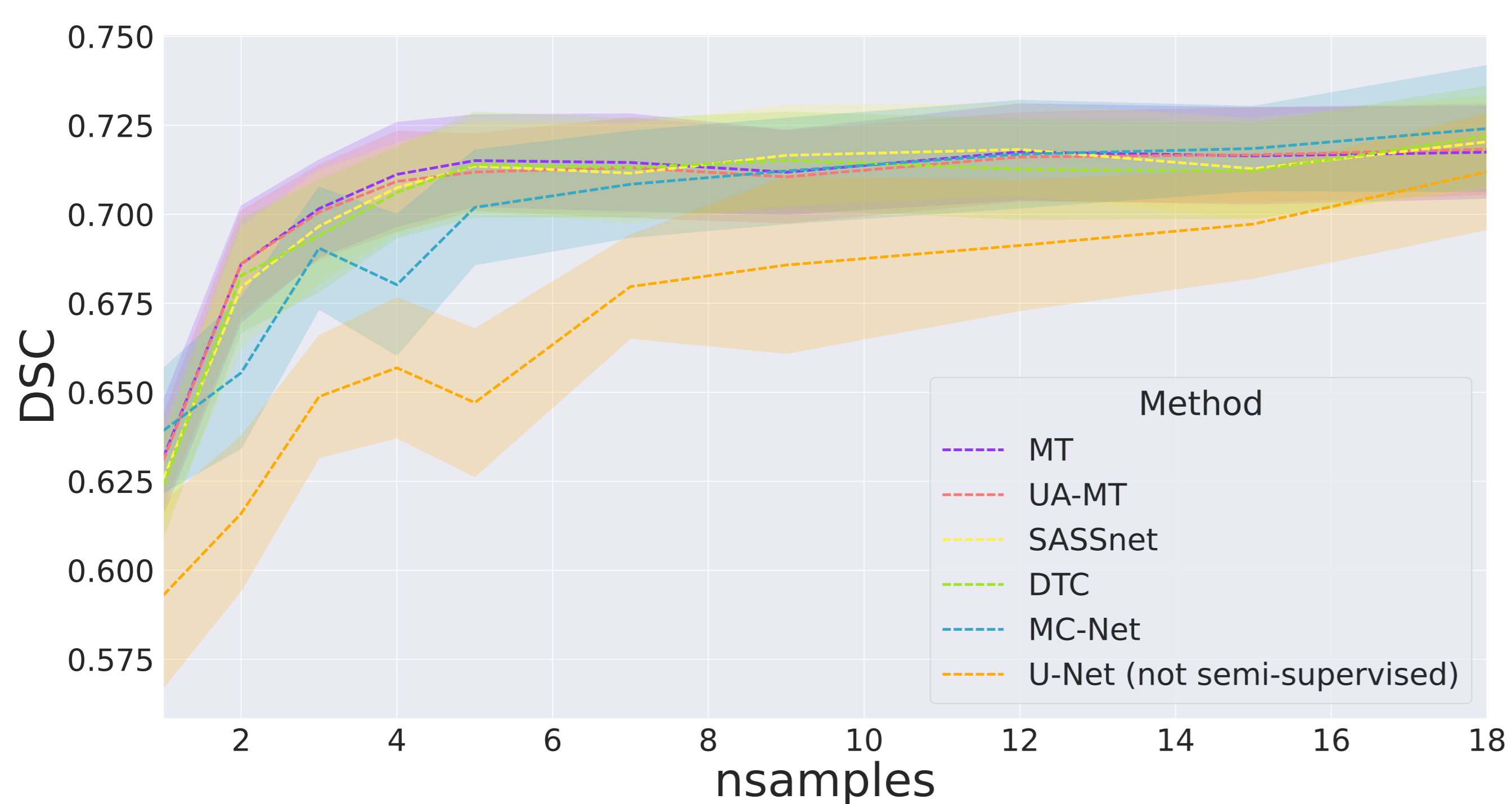
### Bullitt

### IXI



## Exp. 1: Methods comparison and impact of the data availability

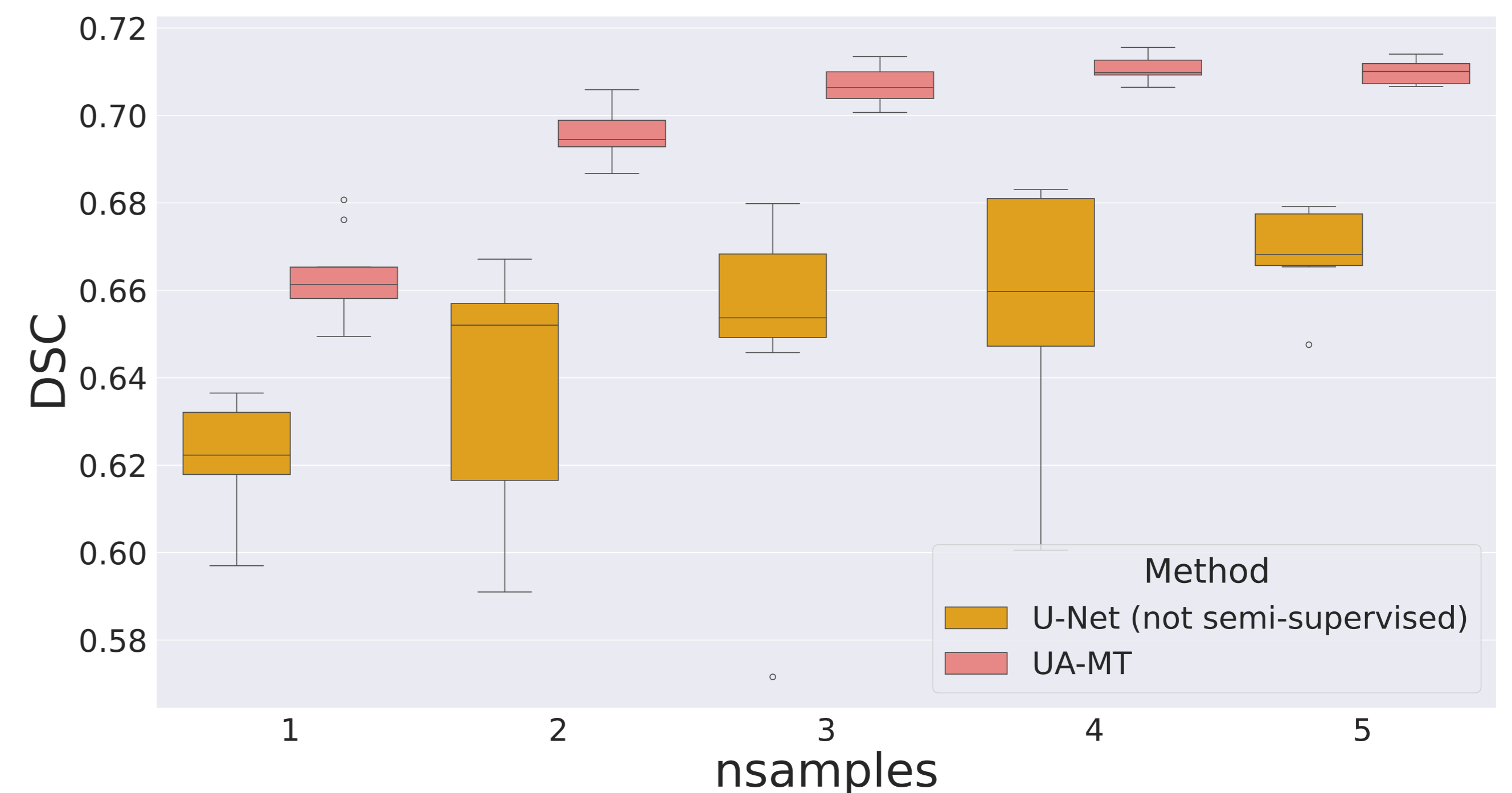
- The goal of this experiment is to conduct a comparative analysis among various **semi-supervised learning** methods and assess their performance in comparison to a supervised baseline.



- All semi-supervised methods perform similarly.
- **Semi-supervised methods outperform supervised method only for very low data setup.**
- Semi-supervised methods are more regularized.

## Exp. 2: Dependency to annotated data

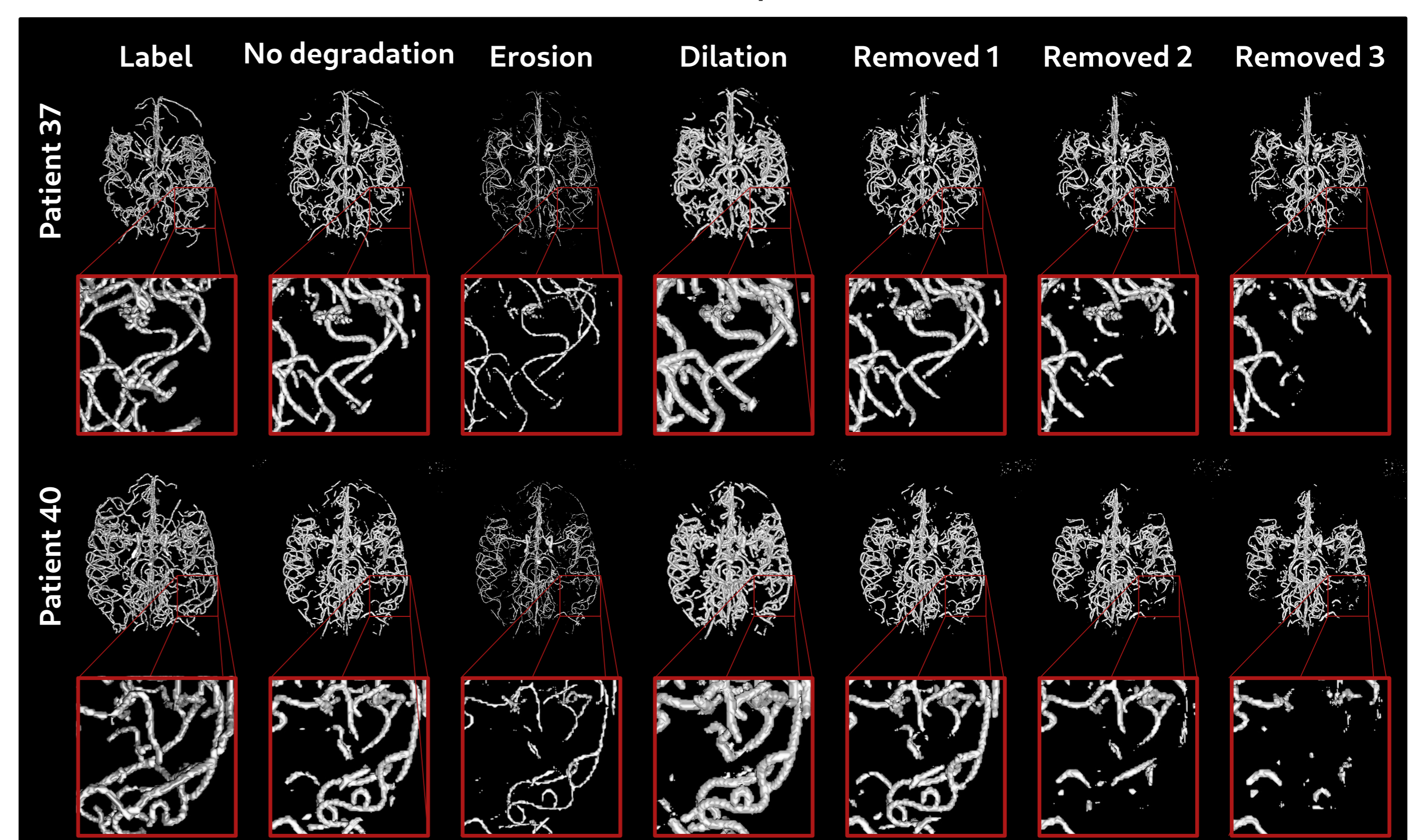
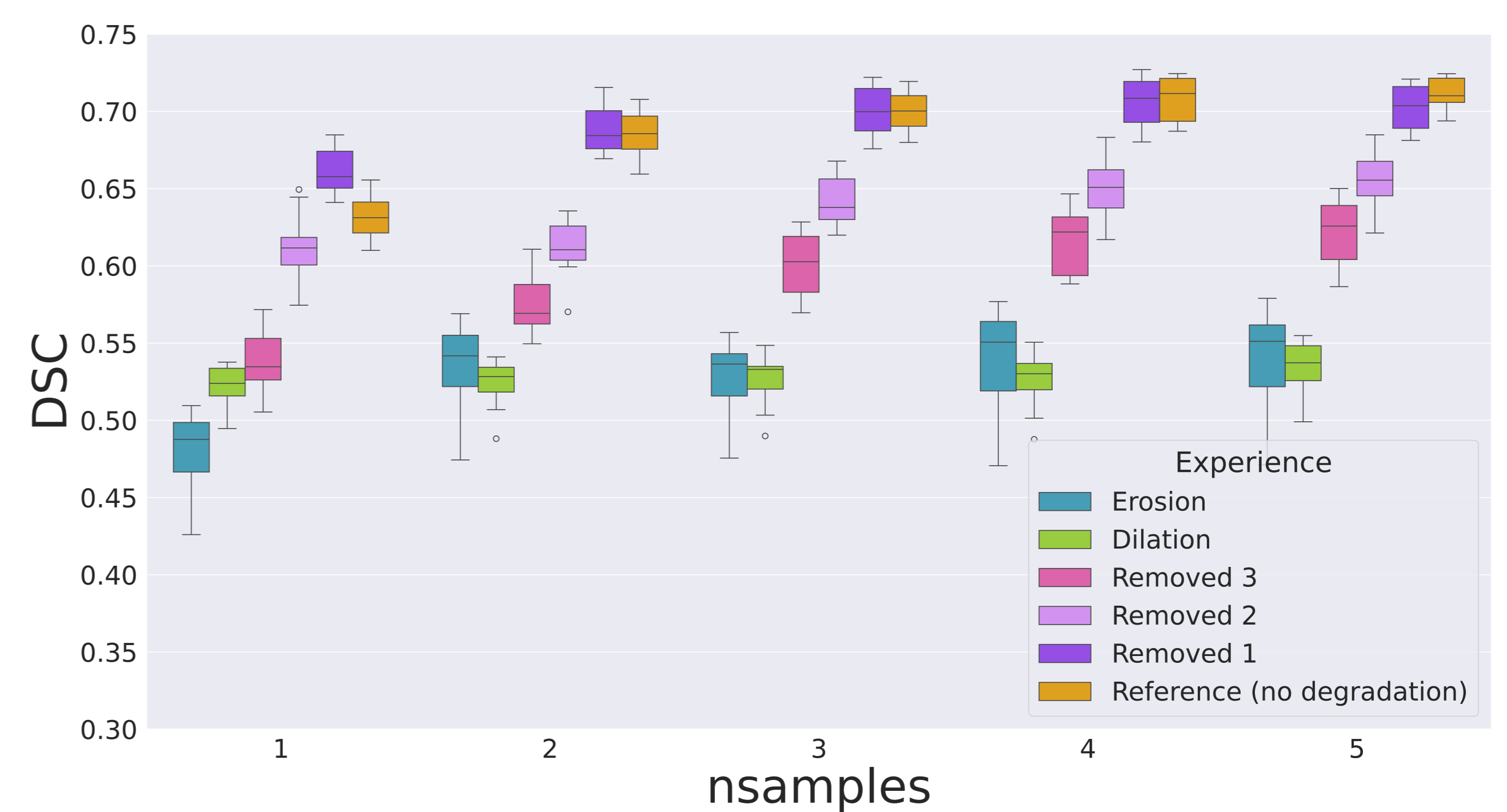
- In **low data regime** scenario the risk of overfitting is very high and the performance of the model highly depends on the data used for training.
- The aim is to study the **impact of the training data seed** for semi-supervised and supervised method.



- **Semi-supervised methods highly reduce the variability between data seeds.**

## Exp. 3: Impact of the annotation quality

- In this experiment, our objective is to study the **impact of both type and degree of label imperfection** on the segmentation results.



- **Erosion and dilation generate a systematic error leading to strong results degradation.**
- **Missing vessels** in the annotations deteriorate less the results and can be partially compensated with more data.
- **Missing vessels** can also lead to a systematic error.