



**HAL**  
open science

## Development of a fast and simple method for extraction of Polychlorobiphenyls ethers (PCBs) in meat and GC/MS analysis

Emma Sanna, Alyssa Bouville, Laurent Debrauwer, Erwan Engel, Frédéric Mercier, jérémy ratel, Sylvie S. Chevolleau

### ► To cite this version:

Emma Sanna, Alyssa Bouville, Laurent Debrauwer, Erwan Engel, Frédéric Mercier, et al.. Development of a fast and simple method for extraction of Polychlorobiphenyls ethers (PCBs) in meat and GC/MS analysis. Analytics 2022, Sep 2022, Nantes, France. <hal-04406145>

**HAL Id: hal-04406145**

**<https://hal.science/hal-04406145v1>**

Submitted on 19 Jan 2024

HAL is a multi-disciplinary open access archive for the deposit and dissemination of scientific research documents, whether they are published or not. The documents may come from teaching and research institutions in France or abroad, or from public or private research centers.

L'archive ouverte pluridisciplinaire HAL, est destinée au dépôt et à la diffusion de documents scientifiques de niveau recherche, publiés ou non, émanant des établissements d'enseignement et de recherche français ou étrangers, des laboratoires publics ou privés.



HAL Authorization

# Development of a fast and simple method for extraction of Polychlorobiphenyls ethers (PCBs) in meat and GC/MS analysis.

Emma Sanna<sup>1,2</sup>, Alyssa Bouville<sup>1,2</sup>, Laurent Debrauwer<sup>1,2</sup>, Erwan Engel<sup>3</sup>, Frédéric Mercier<sup>3</sup>, Jérémy Ratel<sup>3</sup> and Sylvie Chevolleau<sup>1,2\*</sup>

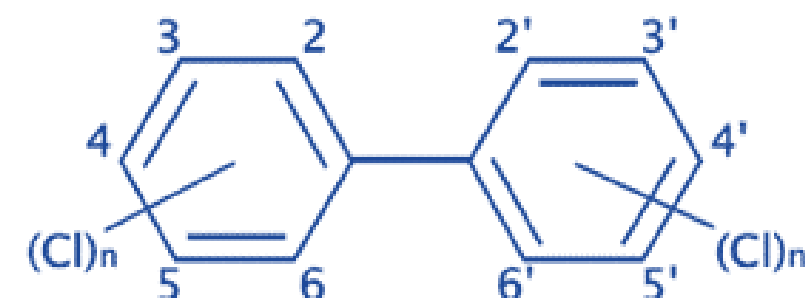
<sup>1</sup> Toxalim (Research Center in Food Toxicology), INRAE, ENVT, INP-Purpan, Université de Toulouse, F-31027 Toulouse, France

<sup>2</sup> Axiom Platform, UMR 1331 Toxalim, INRAE, MetaboHUB-MetaToul, National Infrastructure of Metabolomics and Fluxomics, F-31027 Toulouse, France

<sup>3</sup> QuaPA, MASS group, INRAE, UR370, F-63122 Saint-Genès-Champanelle, France

## Introduction

Polychlorinated biphenyls (PCBs) are synthetic molecules widely used in various industrial sectors in France during the 20th century. These persistent organic pollutants (POPs), are now present in the human diet and bioaccumulate in fatty tissues of living organisms. Their toxicity for humans and environment is well known.



Current sample preparation methods for PCBs analysis in meat (e.g. Soxhlet, microwave-assisted extraction, ASE) are often long and tedious.

The objective of this work, carried out in the frame of the SENTINEL ANR program (ANR-19-CE21-0011), was to develop a simple and fast method using QuEChERS to overcome traditional PCBs extraction methods from meat, allowing to improve the GC/MS analysis throughput and to reduce solvent consumption.

## Sentinel project strategy

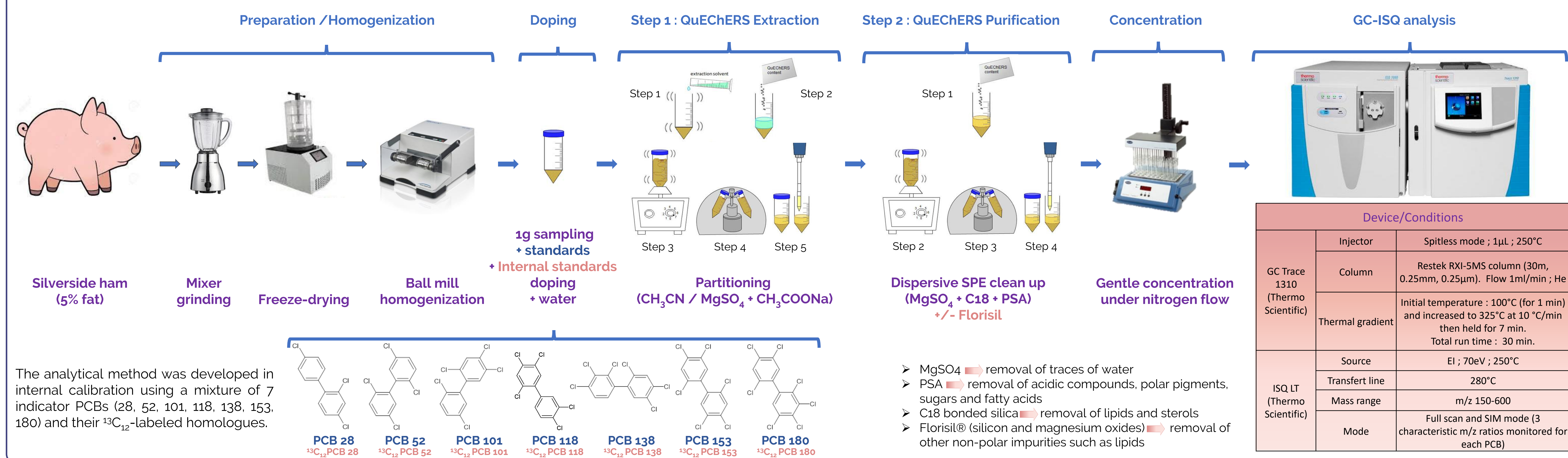
Objective: To strengthen the current food chemical safety monitoring system by developing high-throughput, sensitive and cost-effective screening tools for PCBs surveillance in meat

- 1/ Increase the efficiency of regulatory inspections by health authorities
- 2/ Facilitate industrial self-control tools
- 3/ Monitor chemical contaminants at sub-regulatory levels

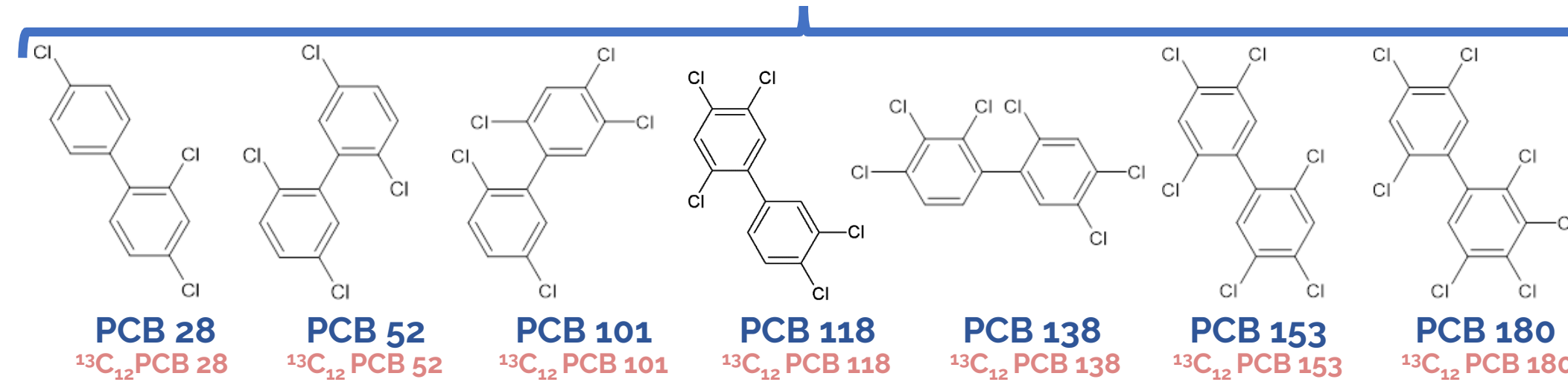


Better understanding of contaminations, better prevention of chemical risks, better understanding of the risks associated with chronic low-dose exposures

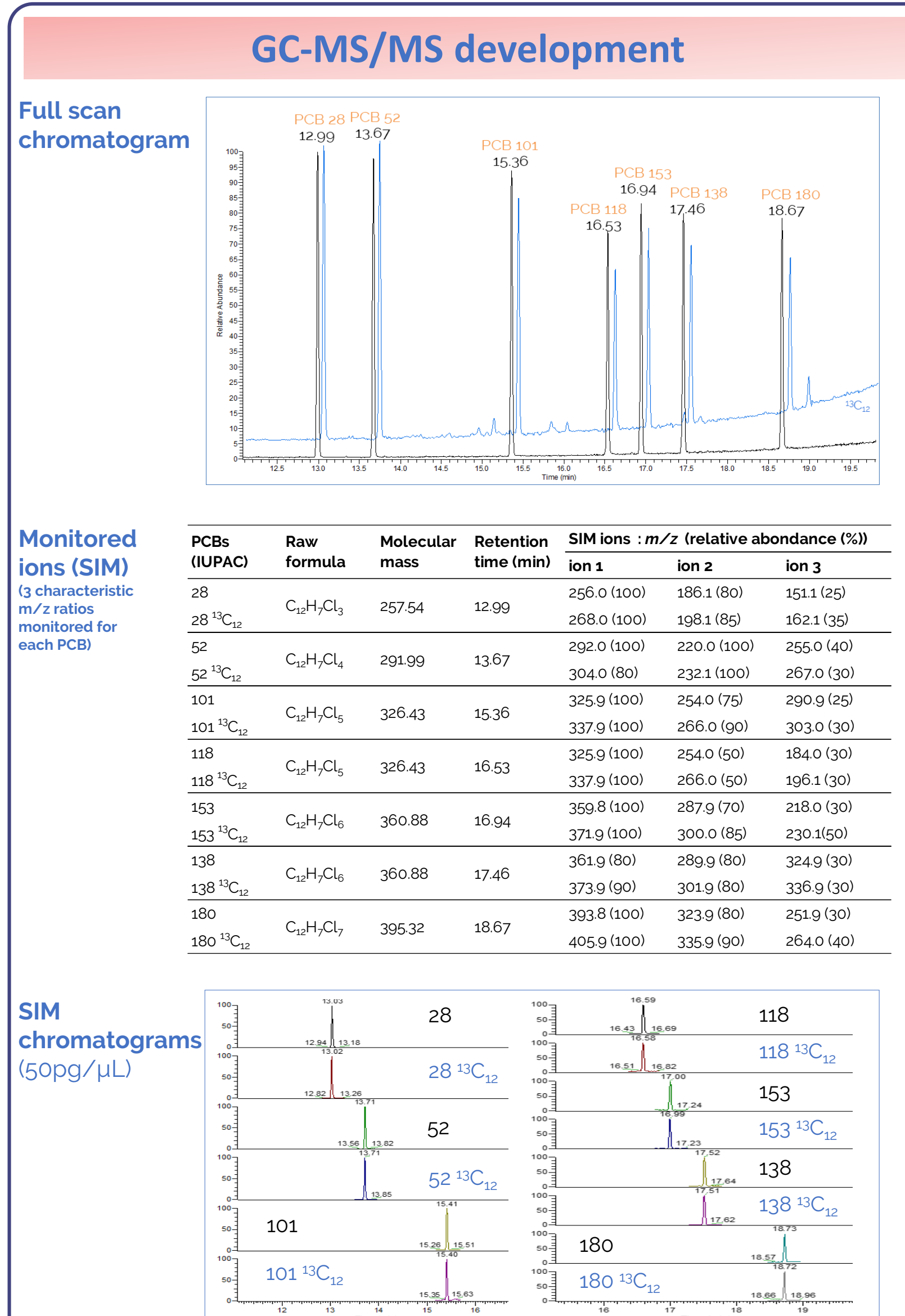
## Materials and Methods



The analytical method was developed in internal calibration using a mixture of 7 indicator PCBs (28, 52, 101, 118, 138, 153, 180) and their <sup>13</sup>C<sub>12</sub>-labeled homologues.



## Results and Discussion



Parameters tested	7 PCB method performance																																								
<b>Selectivity</b> (n=3)	In progress. Numerous interferences from the matrix and QuEChERS salts																																								
<b>Carry-over</b> (n=3)	No carry-over in blanks (solvent) at the highest calibration point																																								
<b>Sensitivity</b> LOD (S/N>3), LOQ (S/N>10) (n=5) (pg/µL)	<table border="1"> <thead> <tr> <th>PCB</th> <th>LOD solvent</th> <th>LOQ solvent</th> <th>LOD matrix</th> <th>LOQ matrix</th> </tr> </thead> <tbody> <tr> <td>PCB 28</td> <td>0.1</td> <td>0.1</td> <td>In progress</td> <td>In progress</td> </tr> <tr> <td>PCB 52</td> <td>0.25</td> <td>0.25</td> <td>In progress</td> <td>In progress</td> </tr> <tr> <td>PCB 101</td> <td>0.5</td> <td>0.5</td> <td>In progress</td> <td>In progress</td> </tr> <tr> <td>PCB 118</td> <td>0.5</td> <td>0.5</td> <td>In progress</td> <td>In progress</td> </tr> <tr> <td>PCB 138</td> <td>0.5</td> <td>1</td> <td>In progress</td> <td>In progress</td> </tr> <tr> <td>PCB 153</td> <td>0.25</td> <td>0.25</td> <td>In progress</td> <td>In progress</td> </tr> <tr> <td>PCB 180</td> <td>0.25</td> <td>0.25</td> <td>In progress</td> <td>In progress</td> </tr> </tbody> </table>	PCB	LOD solvent	LOQ solvent	LOD matrix	LOQ matrix	PCB 28	0.1	0.1	In progress	In progress	PCB 52	0.25	0.25	In progress	In progress	PCB 101	0.5	0.5	In progress	In progress	PCB 118	0.5	0.5	In progress	In progress	PCB 138	0.5	1	In progress	In progress	PCB 153	0.25	0.25	In progress	In progress	PCB 180	0.25	0.25	In progress	In progress
PCB	LOD solvent	LOQ solvent	LOD matrix	LOQ matrix																																					
PCB 28	0.1	0.1	In progress	In progress																																					
PCB 52	0.25	0.25	In progress	In progress																																					
PCB 101	0.5	0.5	In progress	In progress																																					
PCB 118	0.5	0.5	In progress	In progress																																					
PCB 138	0.5	1	In progress	In progress																																					
PCB 153	0.25	0.25	In progress	In progress																																					
PCB 180	0.25	0.25	In progress	In progress																																					
<b>Calibration range</b> 7 points: 0.5, 1, 5, 10, 50, 100, 500 pg/µL and IS 50 pg/µL (n=3)	<table border="1"> <thead> <tr> <th>Parameter</th> <th>Performance</th> </tr> </thead> <tbody> <tr> <td>Model solvent</td> <td>Linear or Quadratic according to PCB</td> </tr> <tr> <td>Model matrix</td> <td>In progress</td> </tr> <tr> <td>Weighting solvent</td> <td>1/X</td> </tr> <tr> <td>Weighting matrix</td> <td>In progress</td> </tr> <tr> <td>R<sup>2</sup> solvent</td> <td>&gt; 0.9996 for all PCB</td> </tr> <tr> <td>R<sup>2</sup> matrix</td> <td>In progress</td> </tr> </tbody> </table>	Parameter	Performance	Model solvent	Linear or Quadratic according to PCB	Model matrix	In progress	Weighting solvent	1/X	Weighting matrix	In progress	R <sup>2</sup> solvent	> 0.9996 for all PCB	R <sup>2</sup> matrix	In progress																										
Parameter	Performance																																								
Model solvent	Linear or Quadratic according to PCB																																								
Model matrix	In progress																																								
Weighting solvent	1/X																																								
Weighting matrix	In progress																																								
R <sup>2</sup> solvent	> 0.9996 for all PCB																																								
R <sup>2</sup> matrix	In progress																																								
<b>Matrix effect</b> Extract blank matrix spiked with 3 QC levels: 25, 50, 100 pg/µL (n=3)	Strong effect: ME>+50%																																								
<b>Recovery rate</b> Blank matrix spiked with 3 QC levels: 25, 50, 100 pg/µL (n=3)	[41-79 %] Improved with Florisil: [67-86%]																																								

> Blank matrix: Silverside ham



## Conclusion

- Main QuEChERS parameters (solvents, salt concentrations, contact time, temperature...) have been tested for the extraction step. Several conditions have also been tested for the purification part using dSPE and dSPE + Florisil. Alternative tests are currently conducted using LLE (Hexane, AcOEt) for extraction or using SPE for purification, in order to reduce interfering materials and improve the performance of the analytical method.
- Once validated this method will be transposed to high resolution mass spectrometric detection enabling to strengthen the current food chemical safety monitoring system with the aim to use this method for PCBs determination at sub-regulatory levels by further gaining both detection selectivity and sensitivity.

## Acknowledgments

ANR Sentinel (ANR-19-CE21-0011)  
MetaboHUB (MetaboHUB-ANR-11-INBS-0010)

\* email contact : sylvie.chevolleau@inrae.fr