



HAL
open science

Aircraft-based mass balance estimate of methane emissions from offshore gas facilities in the Southern North Sea

Magdalena Pühl, Anke Roiger, Alina Fiehn, Alan M Gorchov Negron, Eric A Kort, Stefan Schwietzke, Ignacio Pisso, Amy Foulds, James Lee, James L France, et al.

► **To cite this version:**

Magdalena Pühl, Anke Roiger, Alina Fiehn, Alan M Gorchov Negron, Eric A Kort, et al.. Aircraft-based mass balance estimate of methane emissions from offshore gas facilities in the Southern North Sea. *Atmospheric Chemistry and Physics Discussions*, 2023, 10.5194/acp-2022-826 . hal-04405415

HAL Id: hal-04405415

<https://hal.science/hal-04405415>

Submitted on 19 Jan 2024

HAL is a multi-disciplinary open access archive for the deposit and dissemination of scientific research documents, whether they are published or not. The documents may come from teaching and research institutions in France or abroad, or from public or private research centers.

L'archive ouverte pluridisciplinaire **HAL**, est destinée au dépôt et à la diffusion de documents scientifiques de niveau recherche, publiés ou non, émanant des établissements d'enseignement et de recherche français ou étrangers, des laboratoires publics ou privés.



Aircraft-based mass balance estimate of methane emissions from offshore gas facilities in the Southern North Sea

Magdalena Pühl¹, Anke Roiger¹, Alina Fiehn¹, Alan M. Gorchov Negron², Eric A. Kort², Stefan Schwietzke³, Ignacio Pisso⁴, Amy Foulds⁵, James Lee⁶, James L. France^{3,7,8}, Anna E. Jones⁷, Dave Lowry⁸, Rebecca E. Fisher⁸, Langwen Huang⁵, Jacob Shaw⁵, Prudence Bateson⁵, Stephen Andrews⁶, Stuart Young⁶, Pamela Dominutti⁹, Tom Lachlan-Cope⁷, Alexandra Weiss⁷, Grant Allen⁵

¹Deutsches Zentrum für Luft- und Raumfahrt (DLR), Institut für Physik der Atmosphäre, Oberpfaffenhofen, Germany

²Department of Climate and Space Sciences and Engineering, University of Michigan, Ann Arbor, MI, USA

³Environmental Defense Fund, Berlin, Germany

10 ⁴Norwegian Institute for Air Research (NILU), Kjeller, Norway

⁵Department of Earth and Environmental Science, University of Manchester, Manchester, M13 9PL, UK

⁶National Centre for Atmospheric Science, University of York, York, YO10 5DQ, UK

⁷British Antarctic Survey, Natural Environment Research Council, Cambridge CB3 0ET, UK

⁸Department of Earth Sciences, Royal Holloway, University of London, Egham TW20 0EX, UK

15 ⁹Université Grenoble Alpes, UMR 5001, CNRS, IRD, Grenoble, 38000, France

Correspondence to: M. Pühl (Magdalena.puehl@dlr.de)

Abstract. Atmospheric methane (CH₄) concentrations have more than doubled since the beginning of the industrial age, making CH₄ the second most important anthropogenic greenhouse gas after carbon dioxide (CO₂). The oil and gas sector represent one of the major anthropogenic CH₄ emitters as it is estimated to account for 22% of global anthropogenic CH₄ emissions. An airborne field campaign was conducted in April-May 2019 to study CH₄ emissions from offshore gas facilities in the Southern North Sea with the aim to derive emission estimates using a top-down (measurement-led) approach. We present CH₄ fluxes for six UK and five Dutch offshore platforms/platform complexes using the well-established mass balance flux method. We identify specific gas production emissions and emission processes (venting/fugitive or flaring/combustion) using observations of co-emitted ethane (C₂H₆) and CO₂. We compare our top-down estimated fluxes with a ship-based top-down study in the Dutch sector and with bottom-up estimates from a globally gridded annual inventory, UK national annual point-source inventories, and with operator-based reporting for individual Dutch facilities. In this study, we find that all inventories, except for the operator-based facility-level reporting, underestimate measured emissions, with the largest discrepancy observed with the globally gridded inventory. Individual facility reporting, as available for Dutch sites for the specific survey date, shows better agreement with our measurement-based estimates. For all sampled Dutch installations together, we find that our estimated flux of (122.7 ± 9.7) kg h⁻¹ deviates by a factor 0.7 (0.35-12) from reported values (183.1 kg h⁻¹). Comparisons with aircraft observations in two other offshore regions (Norwegian Sea and Gulf of Mexico) show that measured, absolute facility-level emission rates agree with the general distribution found in other offshore basins despite different production types (oil, gas) and gas production rates, which vary by two orders of magnitude. Therefore, mitigation is warranted equally across geographies.



35 1 Introduction

Atmospheric CH₄ mole fractions have more than doubled since 1750 due to human activity and continue to rise (Saunois et al., 2020). According to the NOAA Global Monitoring Laboratory, globally-averaged atmospheric CH₄ is estimated to have experienced the most dramatic annual increase in 2021 since the beginning of the measurements in 1984 (Lan et al., 2022). With a factor 80-83 times stronger global warming potential over a 20-year time horizon compared to CO₂, CH₄ is the second-
40 most important anthropogenic greenhouse gas after CO₂ and contributes 16% to the effective radiative forcing of well-mixed greenhouse gases over 1750-2019 (Forster et al., 2021). Considering its short life time of around a decade, CH₄ bears a high potential for mitigation strategies in order to reach the aim of the UNFCCC Paris Agreement to abate climate warming (Nisbet et al., 2019). Recently, the European Union and the UK signed up to the Global Methane Pledge with the aim to cut global CH₄ emissions by at least 30% from 2020 levels by 2030 (European Commission, United States of America, 2021).

45 The oil and gas sector has been estimated to account for 22 (18-27)% of global anthropogenic CH₄ emissions (bottom-up 2017; Saunois et al., 2020). Onboard offshore oil and gas platforms, CH₄ is emitted during routine operations due to safety and operational reasons (e.g. shutdown or start-up of equipment during production) by either controlled venting or flaring, i.e., the release of gas or burning of gas. In the latter case, CO₂ is released simultaneously, with the CH₄/CO₂ emission ratio dependent on the flaring efficiency. According to the United Kingdom Continental Shelf (UKCS) Flaring & Venting report (Oil and Gas
50 Authority (OGA), 2020), in 2019 a total of 2600 metric tonnes (t) CH₄ was emitted in the Southern North Sea and the minor Irish Sea region, of which 74% comes from venting, 13% from turbines and engines, 10% are fugitive emissions (e.g. from leaky valves or compressors) and 3% flaring. Carbon dioxide emission was 0.8 Mt in the same year, arising mainly from turbines and engines (95%) with minor contribution of flaring (4%) and venting (0.01%). Flaring accounts for 87% and venting 13% of the total CO₂ and CH₄ emissions from venting and flaring. Flaring emissions consist of 99% CO₂ and 1% CH₄ and
55 venting emissions of 98% CH₄ and 2% CO₂. Dutch CH₄ emissions from the extraction of crude oil and natural gas on the Netherlands Continental Shelf (Dutch Pollutant Release and Transfer Register, 2019) amount to 6500 t in 2019, of which 98% comes from venting and fugitives, 1.6% from the usage of natural gas (e.g. as fuel for combustion) and 0.2% from flaring. Carbon dioxide emission was 1.1 Mt with a share of 99% from usage of natural gas, 0.8% from flaring and 0.2% from venting and fugitives. Flaring accounts for 33% and venting/fugitives 67% of the total CO₂ and CH₄ emissions from venting/fugitives
60 and flaring. Flaring emissions consist of 99.7% CO₂ and 0.3% CH₄ and venting/fugitive emissions are 89% CH₄ and 11% CO₂.

In Europe the UK is the second largest and the Netherlands the third largest natural gas producer after Norway (Eurostat, 2018). Most of the UK offshore dry gas production takes place in the Southern North Sea region, which comprises 81 dry gas fields with 181 installations. In 2019, 492 bcf (billion cubic feet) of dry gas was produced. In comparison, the Dutch offshore gas production was 348 bcf from 181 offshore gas fields located in the Southern North Sea.

65 Several studies indicate that bottom-up inventories underestimate emissions from the oil and gas industry (MacKay et al., 2021; Saunois et al., 2020; Gorchov Negron et al., 2020; Schwietzke et al., 2016; Pétron et al., 2012). Unintended leaks can



70 significantly contribute to CH₄ emissions (Varon et al., 2019; Pandey et al., 2019; Lee et al., 2018; Zavala-Araiza et al., 2017; Conley et al., 2016; Lyon et al., 2015). Top-down emission estimates from direct measurements close to sources can help to independently validate bottom-up estimates in inventory data. A better understanding, monitoring and verification of CH₄ emissions associated with oil/gas operations is crucial part of the European Methane strategy (European Commission, 2020).

75 Studies on measurements of CH₄ emissions from offshore platforms are still rare. Ship-based measurements were conducted in the U.S. Gulf of Mexico (Yacovitch et al., 2020), in Southeast Asia (Nara et al., 2014) and in the North Sea (Riddick et al., 2019; Hensen et al., 2019). CH₄ emissions from the vicinity of 3 UK gas platforms in the Southern North Sea measured by Riddick et al., 2018, are 17.6 - 20.5 kg h⁻¹. In this study, observations were taken onboard small boats at an altitude of ~2.5 m (above sea level). The measurements relied on a Gaussian plume model to estimate the vertical resolution of a plume, resulting in a total uncertainty of 45%. Hensen et al., 2019, determined CH₄ fluxes around 5 Dutch facilities in the Southern North Sea using a combination of measurements taken 35 m above sea level, a Gaussian plume model and a tracer-release experiment. The results range from 10 kg h⁻¹ to 194 kg h⁻¹.

80 In contrast to ship-based measurements, the mobility of aircraft allows for sampling of emission plumes both horizontally and vertically, and thus, airborne measurements provide more detailed information on marine boundary layer conditions which are known to be complex. To the best of our knowledge, the only airborne measurements around offshore facilities conducted so far took place in the Sureste Basin, Mexico (Zavala-Araiza et al., 2021), in the U.S. Gulf of Mexico (Gorchov Negron et al., 2020), in the Norwegian Sea (Foulds et al., 2022; Roiger et al., 2015) and in the North Sea (Lee et al., 2018; Cain et al., 2017). Lee et al., 2018, determined CH₄ fluxes higher than 4500 kg h⁻¹ arising from an uncontrolled CH₄ blow out around one 85 installation in the Central North Sea.

Our paper is organized as follows: In Section 2, we briefly introduce the aircraft instrumentation and sampling strategy applied during the field campaign in the Southern North Sea. We describe the mass balance method used for the calculation of CH₄ fluxes and give an overview of the emission inventories. In Section 3, we discuss our measurements and compare the estimated fluxes with the annualized Global Fuel Exploitation Inventory (GFEI) (Scarpelli et al., 2019), UK annually reported data (UK 90 National Atmospheric Emissions Inventory (NAEI), UK Environmental and Emissions Monitoring System database (EEMS)), and with individual reporting by operators of the sampled Dutch platforms. Additionally, we compare our estimated fluxes with ship-based measurements, which were taken around the sampled Dutch platforms in 2018 (Hensen et al., 2019). Finally, we set the findings into a wider context by comparing them with results from aircraft observations in two other offshore regions (Norwegian Sea (Foulds et al., 2022), Gulf of Mexico (Gorchov Negron et al., 2020)).



95 2 Materials and Methods

2.1 Campaign 2018/2019 in the Southern North Sea

In April-May 2019 airborne measurements of emissions from offshore installations in the Southern North Sea were conducted within the framework of the United Nations Climate & Clean Air Coalition (UN CCAC) objective to help characterize global CH₄ emissions arising from the oil and gas industry. In a previously conducted campaign in 2018, regional survey flights were performed for method development purposes. In 2019, the flight strategy was adapted in order to sample emissions from dedicated installations, which were chosen because of available inventory emission estimates (UK sites, NAEI) and previous ship-borne measurements (NL sites, Hensen et al., 2019). France et al. (2021) describe the instrument payload and the sampling strategy for both campaigns. Here we extend this study with a quantification of CH₄ emissions for the studied offshore platforms in 2019.

Figure 1 depicts the flight patterns for 2019. A total of five flights were conducted in the Southern North Sea region. Both UK and Dutch sites of offshore gas facilities were surveyed. One flight (F326) was aborted due to poor weather conditions. Platform positions were taken from the Oil and Gas Authority (OGA) for UK sites and the Dutch Oil and gas portal (NLOG) for Dutch sites. Multiple vertically stacked transects in a 2D plane were flown downwind of targeted platforms to fully capture the vertical extent of a plume. Measurements were made at distances varying from 1 to 10 km from the facilities at altitudes between 45 m - 1300 m above sea level. The flights took place in the afternoon hours, when the boundary layer was expected to be well-mixed. The boundary layer height was determined from abrupt changes in observed potential temperature gradient which mark the boundary layer top, using meteorological data sampled during the vertical profiling of the aircraft.

The DHC6 Twin Otter research aircraft, operated by the British Antarctic Survey (BAS), was equipped with several instruments to collect in situ data of atmospheric trace gases. A Picarro G2311-f 10 Hz Analyser measured dry-air CH₄ and CO₂ mole fractions at a response time of 0.4 s and at a precision of 1.2 ppb (1 σ @ 1 Hz) for CH₄. A tuneable infrared laser direct absorption spectrometer (TILDAS, Aerodyne Research Inc.) was deployed to detect C₂H₆ (response time < 2 s; precision 50 ppt over 10 s) (Yacovitch et al., 2014). To assess boundary layer physics, sensors for temperature, pressure, humidity and 3D-wind were mounted at the front nose of the aircraft. A NOAA “Best Air Turbulence” probe was installed at the boom of the aircraft and provided wind measurements at a resolution of 50 Hz (Weiss et al., 2011; Garman et al., 2006). More details on the instrumentation and its calibration procedures are given in France, et. al. (2021).

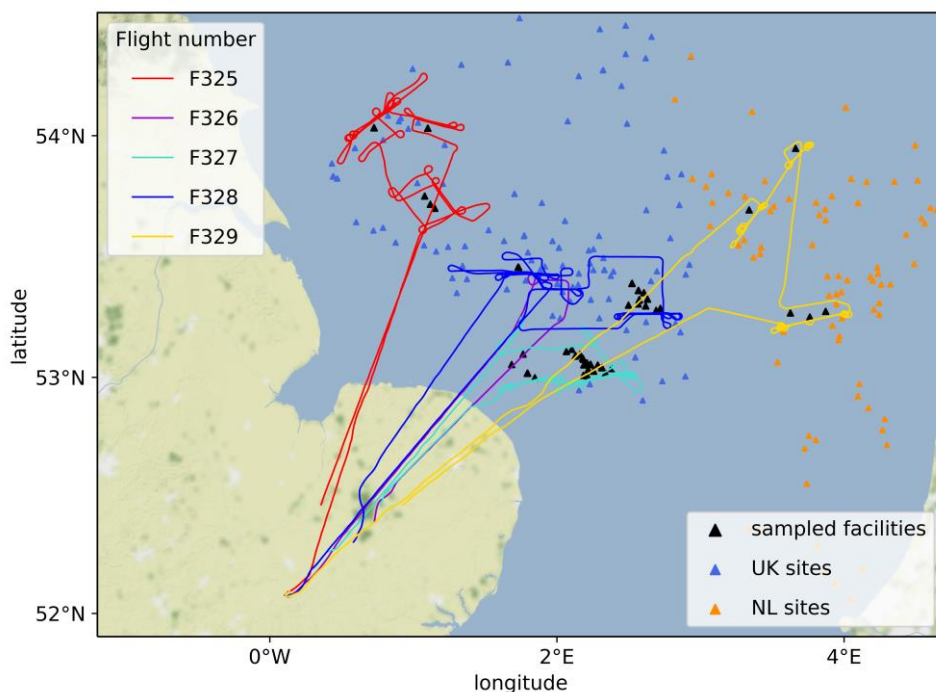


Figure 1. Aircraft tracks for the 2019 campaign in the Southern North Sea (lines). Location of all offshore facilities in the UK (blue markers) and Dutch (orange markers) region and the sampled facilities (black markers).

2.2 Flux calculation method

We apply the mass balance method to determine the amount of CH₄ emitted by the platforms/ multi-platform complexes and passing through a vertical 2D plane downwind (e.g. Pitt et al., 2019; Klausner et al., 2018; O’Shea et al., 2014). For the flux calculation, measured wind speeds in the target region are required to be relatively steady. Further, under the given meteorological conditions the plume should be vertically well-mixed within the planetary boundary layer. Equation (1) is used to derive the CH₄ flux (unit mass per time) across each individual horizontal transect *i* within the plane, followed by an integration over the vertical plume extent:

$$Flux_i = \Delta C_i \cdot \frac{p_i M}{R \cdot T_i} \cdot V_{\perp} \cdot \Delta x_i \cdot D_i \quad (1)$$

ΔC_i represents the difference of CH₄ molar ratios measured in- (C_i) and outside (C_0) of the plume ($\Delta C_i = C_i - C_0$). C_0 thereby denotes the atmospheric background in CH₄ and is individually calculated for each transect by a linear interpolation between both plume edges and averaging over a time period of 30 s at either side of the plume. CH₄ molar ratios are converted to a CH₄ mass density by applying the ideal gas law, i.e. multiplication with molar mass M , the ideal gas constant R and measured pressure p_i and temperature T_i . The CH₄ mass density is then multiplied with the average wind speed V_{\perp} perpendicular to the flight track, which is calculated from the measured average wind speed, wind direction and aircraft heading over all transects.



Finally, the CH₄ flux for each single transect is obtained by multiplying with the plume width Δx_i and the vertical depth of each mixing layer D_i . The subdivision of the 2D vertical plane into discrete layers is applied to account for a possible non-uniformly spread (or dispersed) plume. The enhancement measured in each transect is assumed for a layer reaching halfway to the next upper/lower transect. In the case where CH₄ enhancements were detected up to the highest transect of the aircraft, we use the boundary layer height as the maximal upper plume boundary. The boundary layer height is inferred from inspection of the vertical gradient of the potential temperature, which is calculated using the in-situ measured meteorological parameters (Stull, 1988). In case of enhanced CH₄ being detected in the lowest transect, the surface is assumed as lower plume boundary. As a result, the bulk net CH₄ flux through the plane $Flux_{total}$ is the sum over the fluxes $Flux_i$ calculated for each transect i where CH₄ was enhanced:

$$145 \quad Flux_{total} = \sum_i^{transects} Flux_i \quad (2)$$

Our flux calculation method is similar to the method applied by Foulds et al. (2022), but differs slightly in the calculation of ΔC_i . Foulds et al. (2022) calculate the background CH₄ molar ratio over a greater time period (50 s) due to a more variable CH₄ background seen in the Norwegian Continental Shelf. In the Appendix A, the CH₄ flux calculation is illustrated by using observations of platform P1 on 30 April 2019. Detailed information on the uncertainty calculation method is provided in the Appendix B.

2.3 Emission inventories

In our comparison with bottom-up estimates we refer to a globally gridded annual inventory based on IPCC Tier 1 methods (IPCC, 2006), UK national point-source inventories and facility-level reporting by Dutch operators.

2.3.1 Globally gridded annual inventory of CH₄ emissions from fossil fuels exploitation

155 The Global Fuel Exploitation Inventory (GFEI) (Scarpelli et al., 2019) is a globally gridded 0.1° x 0.1° inventory containing CH₄ emissions arising from fossil fuel exploitation for the year 2019. National emission totals, which are based on country-specific emission factors, are reported to the UNFCCC (United Nations Framework Convention on Climate Change) and used in the inventory for a spatial downscaling to the locations of potential sources (Scarpelli, 2020). Thereby, global data sets for oil and gas infrastructure are used. The UK UNFCCC reporting for emissions from the offshore oil and gas exploitation is based on the UK Environmental and Emissions Monitoring System (EEMS) database (Brown et al., 2022) and the Dutch reporting is based on the Dutch Pollutant Release and Transfer Register (Honig et al., 2022). In the UNFCCC reported data, fugitive emissions are already categorized into subsectors, whereas venting and flaring emissions are reported as totals. Thus, the latter are disaggregated by the inventory to the subsectors using IPCC Tier 1 methods (IPCC, 2006). As a result, the inventory resolves the different fossil fuels sectors (oil, gas, coal) and associated subsectors (distribution (fugitive), exploration (fugitive + venting + flaring), processing (fugitive, flaring), production (fugitive, flaring), storage (fugitive) and transmission (fugitive, venting)). We compare our emission estimates with the GFEI v2 data set for total global fuel exploitation for gas



from the Harvard Dataverse (Scarpelli et al., 2019). Thereby, we take the inventory data given for each grid cell (Mt/km^2) and calculate the emission from the grid cell area.

2.3.2 UK annual point-source inventories

170 The UK Environmental and Emissions Monitoring System (EEMS) database is the environmental database of the UK oil and
gas industry maintained by the Offshore Petroleum Regulator for Environment and Decommissioning (OPRED) and the UK
Department for Business, Energy & Industrial Strategy (BEIS). It provides annual data from measurements and calculations
made for single offshore installations based on reported data from operators. According to the EEMS Atmospheric Emission
Calculations (OPRED (BEIS), 2008), monitoring systems of emitted gases are rare at offshore installations. Where no direct
175 measurement data is available, the emission is calculated by the inventory multiplying activity data (e.g. fuel consumption or
flow to flare/venting stack) with locally derived or default emission factors, which are mainly taken from literature. Inventory
sources for CH_4 and CO_2 are differentiated into: engines, heaters and turbines for either diesel, fuel oil or gas consumption;
total fugitive emissions; gas flaring from maintenance, routine or upsets/other; total gas venting and emissions from ship oil
loading. Latest EEMS data is available for 2018 and 2019.

180 The UK National Atmospheric Emissions Inventory (NAEI) is an emission database listing all UK point-sources and is
provided by BEIS. For offshore oil and gas installations it is based on the EEMS inventory (Tsagatakis, et al., 2022). In the
NAEI inventory, emission data is aggregated for all platforms associated with a certain oil or gas field (NAEI, 2020). Offshore
emission data is available for CH_4 and for CO_2 . The fluxes observed in this study arise from installations within a certain field
and are compared to the inventory data from 2018.

185 2.3.3 Facility-level reporting by platform operators for the survey date

For the sampled Dutch sites facility-level operator-based reporting on CH_4 emission was provided after the flights. The OGMP
2.0 level of the reporting corresponds to level 3, i.e. using generic emission factors for individual source types. Additionally,
detailed information on operational status, e.g. shutdown, and emission processes (flaring, fugitive, venting) was reported for
the specific survey day. Such information was unavailable for the UK facilities upon request via the trade association Oil &
190 Gas UK.

3 Results

The flight conditions during the flights selected for this study were generally good with moderate wind speeds (< 10 m/s). For
one flight the flux calculation for two installations was not successful due to a poorly defined plume. As a result, CH_4 emission
fluxes have been determined for six UK and five Dutch facilities sampled during flight surveys on 30 April 2019, 2 May 2019
195 and 6 May 2019, using the mass balance method described above. The installations, for which the flux calculation was



successful, comprise 17% of the UK SNS dry gas production (OGA, 2019) and 6% of the Dutch offshore dry gas production (NLOG, 2019). Under the prevailing conditions found during the three flights, the level of detection, which is a result of the maximum uncertainty of all flux calculation parameters, is 0.3 kg h^{-1} (2σ). No CH_4 enhancement was detected downstream of 4 out of 11 specifically targeted platforms (P3, P5, P6, P9 in Table 1). In addition, a number of several other platforms were
200 passed downwind with no indication of CH_4 enhancements. These observations are listed in the Appendix E.

In this section we compare our measured CH_4 fluxes with reported emissions and ship-based measurements for Dutch sites. Further, we present observed correlations between CH_4 , C_2H_6 and CO_2 .

3.1 Comparison of calculated and reported CH_4 fluxes

In the following, the top-down results of the 2019 measurements are compared to the most recent available bottom-up estimates
205 from globally gridded and national point-source annual inventories from the years 2018 (NAEI, EEMS), 2019 (EEMS, GFEI) and to daily operator-based facility-level reporting. We also compare our results to a ship-based top-down study conducted by Hensen et al., 2019, for the sampled Dutch sites. Observational based top-down methods only provide “snap-shot” emission estimates representing emissions only for the time of the measurements. This means that a) to allow for a comparison the yearly inventory data needs to be scaled to the temporal resolution of the measurement (or vice-versa), and b) a detailed one-
210 by-one comparison is hampered, which is especially true for cases when observations are made during times of non-typical operational conditions, as well as for intermittent emissions (Foulds et al., 2022; Chen et al., 2022). Therefore, for the comparison with inventories a set of “snap-shot” measurements around a group of sites, which represent a distribution of emissions in a region, are preferred over a one-by-one comparison (Tullos et al., 2021).

Figure 2 and Table 1 show the estimated top-down CH_4 fluxes along with the reported bottom-up fluxes for all sampled
215 installations P1-P11. Typically, one installation denotes a platform for drilling, accommodation and production. P3 consists of 3 platforms, and P6 has one central platform with 3 satellite platforms. P4 and P5, both multi-platform complexes, have two central platforms with a compression unit and a terminal and several more producing platforms around. P4 consists of two central platforms, 6 platforms for production and 3 wellhead platforms (19 platforms in total). P5 has two central platforms, 4 platforms for production and 3 wellhead platforms (15 platforms in total). Emissions in both regions are the same magnitude
220 and range from 12.1 kg h^{-1} to 86.4 kg h^{-1} . Only the multi-platform complex P4 stands out with higher emissions (1258.7 kg h^{-1}).

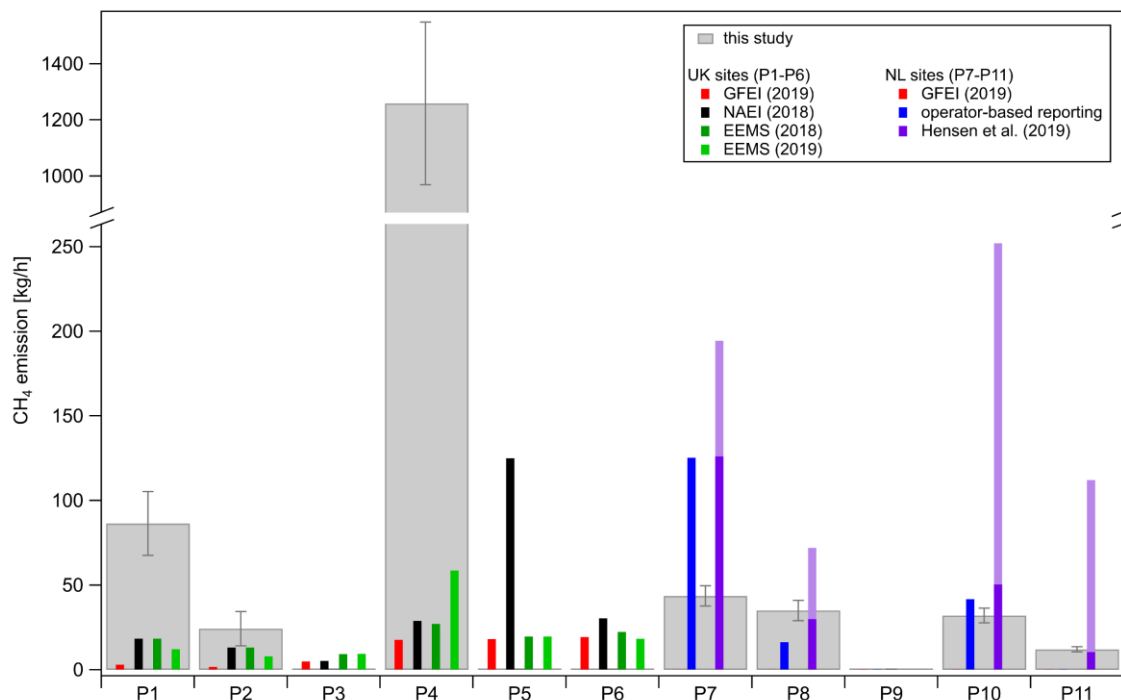


Figure 2. Comparison of calculated CH₄ fluxes from this study (grey) for UK sites (P1-P6) and Dutch sites (P7-P11) to the Global Fuel Exploitation Inventory (GFEI; red), the UK National Atmospheric Emissions Inventory (NAEI; black), UK Environmental and Emissions Monitoring System database (EEMS; dark green for 2018; light green for 2019), reported fluxes from operators (blue) and a ship-based top-down study (range in light purple; minimal flux in dark purple) for Dutch sites (Hensen et al., 2019). The inventory annual emission data is converted to hourly emissions. For 4 out of 11 targeted installations no downwind enhancements were detected (P3, P5, P6, P9). GFEI (2019) emission data for P7-P11 and operator-based reporting for P9 and P11 is smaller than 0.3 kg h⁻¹. Operator reported values were not available for UK sites.



Table 1. Observed CH₄ fluxes for UK and Dutch sites from this study and emissions from annual reporting from the UK National Atmospheric Emissions Inventory (NAEI, 2018), the UK Environmental and Emissions Monitoring System database (EEMS, 2018 and 2019) and the Global Fuel Exploitation Inventory (GFEL, 2019). For 4 out of the 11 targeted installations emissions are measured to be below the level of detection (LoD, 0.3 kg h⁻¹). Data from individual operator-based reporting on the specific survey date was available only for Dutch sites. Information on emission processes is given for venting (vent), fugitives (fug) and flaring (flar). Results from a ship-based top-down study (Hensen et al., 2019) is listed for 4 out of 5 sampled Dutch sites.

Survey date	30 April 2019			2 May 2019			6 May 2019				
Country	UK			UK			NL				
Installation	P1	P2	P3	P4	P5	P6	P7	P8	P9	P10	P11
This study CH ₄ flux [kg h ⁻¹]	86.4 ± 18.9	24.2 ± 10.1	< LoD	1258.7 ± 290.5	< LoD	< LoD	43.6 ± 6.0	35.0 ± 6.0	< LoD	32.0 ± 4.4	12.1 ± 1.5
	2.9	1.6	4.9	18.1	19.3	19.1	0.21	0.21	0.003	0.006	0.01
GFEL (2019)	all	0	0	0	0	7.5	0	0	0	0	0
	gas processing -fug	1.3	0	0	0	7.5	0	0	0	0	0
gas processing - flar	1.2	0	0	0	0	7.3	0.2	0.2	0	0	0
	gas production - flar	0.1	0.5	1.4	5.2	1.3	0.005	0.006	0.003	0.006	0.01
gas exploration - fug, vent, flar	0.3	1.1	3.5	12.9	13.7	3.1	0	0	0	0	0
	18.4	13.1	5.2	28.8	124.9	30.3	n.a.				
NAEI (2018)	18.4 / 12.1	13.1 / 7.9	9.2 / 9.3	27.1 / 58.6 ^a	19.6 / 19.6 ^b	22.3 / 18.3	n.a.				
	0.4 / 0.4	0.5 / 0.4	4.7 / 4.7	3.8 / 5.5	11.4 / 8.2	0.01 / 0.7	n.a.				
EEMS (2018/2019)	turbines,	3.9 / 0	n.a. / n.a.	0 / 0	4.5 / 4.6	0	n.a.				
	engines	14.0 / 11.6	6.5 / 7.5	23.3 / 53.1	3.8 / 6.8	22.3 / 17.7	n.a.				
Reporting by operators (survey date)	fug	0 / 0	0	0 / 0	0 / 0	0	125.2	16.2	0.03 ^c	41.7	0
	flar	0 / 0	0 / 0	0 / 0	0 / 0	0	vent + fug	vent + fug	vent + fug	vent + fug, no flar	no vent no flar
Ship observation (11/2018) (Hensen et al., 2019)	n.a.						126 - 194.4	29.9 - 72	not sampled	50.4 - 252	10.4 - 18.4
	n.a.						126 - 194.4	29.9 - 72	not sampled	50.4 - 252	10.4 - 18.4

^a reporting for 2 (2018) and 1 (2019) platform out of 19 platforms. ^b reporting for 1 (2018 and 2019) platform out of 15 platforms. ^c P9: offline (no dry gas production)



3.1.1 Comparison to a globally gridded annual inventory (Tier 1)

225 We compare our estimated fluxes with the GFEI v2 for 2019, which contains total CH₄ emissions from fossil fuels exploitation and a distribution of emissions per subsector. The platforms surveyed in this study are considered to be processing, production and exploration sites by the inventory. As an example, the total CH₄ emissions reported for P1 (2.9 kg h⁻¹) break down to: 44% estimated to arise from fugitives during gas processing, 43% from flaring during gas processing, 10% from exploration (fugitives + venting + flaring emissions) and 4% from flaring during production. According to the inventory, UK emissions
230 are fugitive, venting and flaring emissions, whereas emissions on Dutch sites arise only from flaring. For all sampled installations, operations other than exploration, production and processing are claimed to emit no CH₄.

Compared to the GFEI v2 data set for total CH₄ emissions from gas exploitation, the measured fluxes of (1369.3 ± 291.3) kg h⁻¹ are 21 times higher than GFEI data (65.9 kg h⁻¹) for all sampled UK facilities on aggregate. However, the highest emitting UK site (P4 complex) is identified as the highest emitter by the GFEI, as well. The factor by which measured emissions around
235 Dutch sites are underestimated by the GFEI is an order of magnitude higher compared to UK sites: Measured fluxes ((122.7 ± 9.7) kg h⁻¹) are 279 times higher than GFEI data (0.44 kg h⁻¹) on aggregate for all sites. This high discrepancy points to the weaknesses in using global inventories for field-specific emissions characterisations especially when compared with snap-shot measurement studies. However, similar to UK sites, the two platforms (P7, P8) with highest emissions measured are correctly identified by the GFEI as the highest emitters.

240 For the sampled installations in this study, Dutch GFEI data is two orders of magnitude smaller compared to UK GFEI data. GFEI relies on UNFCCC reported emissions. Using the UNFCCC GHG Data Interface (UNFCCC, 2022), Dutch annual CH₄ fugitive emissions from the natural gas energy production sector and reported for the year 2019 are 14 times smaller compared to the UK equivalent. Further, in contrast to UK reporting, no data is reported for the natural gas subsectors exploration, production and processing. Thus, GFEI values for Dutch sites can only arise from UNFCCC reported total venting and flaring
245 emissions, since those are disaggregated by the inventory to the subsectors. For the sampled Dutch sites in this study, the inventory gives only flaring emissions from production and processing. Therefore, the UNFCCC reported Dutch emissions, which the inventory is based on, could explain the high discrepancy between GFEI Dutch and UK values.

A related study of 21 oil and gas facilities in the Norwegian Sea finds a better agreement of the GFEI v1 (2016) with the measured fluxes being only a factor 1.4 higher in aggregate for all platforms (Foulds et al., 2022). Similar to the Dutch
250 UNFCCC reporting, the Norwegian UNFCCC reporting does not show emissions for the natural gas subsectors exploration, production and processing. Considering that Foulds et al. sampled both oil and gas producing installations, the better agreement could possibly be attributed to UNFCCC reported emissions for the oil sector.



3.1.2 Comparison to UK annual point-source inventories

The annual estimates of the UK national point-source inventories NAEI and EEMS are smaller than the fluxes measured during this study. For 2018 the measurement-derived fluxes are a factor of ~6 (NAEI; 220 kg h⁻¹) and ~12 (EEMS; 109.7 kg h⁻¹) higher cumulatively for all sampled facilities. However, EEMS emission data for 2019 agree slightly better with the observations taken in 2019: Top-down estimates are a factor of ~11 higher compared to the EEMS reported data (125.8 kg h⁻¹). Most CH₄ emissions of sampled installations and reported by EEMS are attributed to venting (35% - 96%) besides emissions arising from the operation of turbines and engines (0.1% - 50%). It is worth noting that for all platforms listed in EEMS, zero flaring emissions are reported. During the flights no visible flaring was observed. Nevertheless, flaring is stated to have a share of 3% of the Southern North Sea region's total CH₄ emissions in 2019 (OGA, 2020). The Global Gas Flare Catalog 2019 from the Earth Observation Group at the Payne Institute for Public Policy (Elvidge et al., 2015; Elvidge et al., 2013), which uses VIIRS data, shows flaring in the North Sea region. However, for the sampled installations no flaring is observed in 2019, which confirms the inventories zero flaring claim at least for the sampled installations.

As discussed in section 2, EEMS data is fed into the NAEI inventory, hence an agreement of both inventories for 2018 should be expected. A comparison between NAEI data and EEMS data from 2018, however, shows that the numbers are consistent only for two (P1, P2) out of five UK platforms. The NAEI 2018 value is smaller for P3 and higher for P4, P5 and P6 compared to EEMS 2018. NAEI inventory emissions are expressed as a sum of all platforms associated with a field. In contrast, EEMS emissions are listed for one specific platform, also in the case of multi-platform complexes (P4, P5). Those platforms might be interpreted as being representative platforms with the reported emissions being aggregated emissions for the complex. However, since EEMS informs NAEI, it is not clear why both inventories differ for some of the installations in this study.

Regarding P4, we used the FLEXPART (FLEXible PARTicle) dispersion model (Pisso et al., 2019) to attribute the measured emission plumes to individual platforms located within the complex (see Appendix C). The platforms that the observed fluxes were attributed to do not match with the (representative) platforms listed in EEMS 2018/2019.

The discrepancy to UK national inventories detected in this study is higher than reported in previous airborne studies of other offshore regions. Zavala-Araiza et al. (2021) estimated offshore CH₄ emissions in the Sureste Basin, Mexico, to be more than an order of magnitude lower than the values given in the Mexican greenhouse gas emission inventory. Gorchoy Negron et al. (2020) generated an airborne measurement-based inventory comprising offshore facilities located in the U.S. Gulf of Mexico. They showed that for shallow-water facilities CH₄ emissions are more than a factor of two higher than the estimate of the U.S. Environmental Protection Agency Greenhouse Gas Inventory (EPA GHGI) and the Gulfwide Offshore Activity Data System (GOADS) inventory.



3.1.3 Comparison to facility-level reporting by platform operators for the survey date

As expected, the smallest discrepancy between top-down and bottom-up estimates exists for the comparison with emission data of individual facilities provided by platform operators for the specific survey day. Operator-based reporting was only available for the five sampled Dutch installations (P7-P11). The facility-level estimates deviate by up to a factor of ~12 compared to the reporting, whereby two out of five facilities (P7, P10) are overestimated and another two facilities underestimated (P8, P11). According to additional information on emission types provided by the operators, CH₄ emissions arise from venting and fugitives for 4 out of 5 installations (P7-P10). For P11 no venting or flaring was recorded, although CH₄ was detected during the measurements conducted downstream. The measured emissions might be attributed to fugitives, which are not excluded by the operator in this case. Flaring emissions are explicitly excluded only for two out of five installations (P10, P11). For P7-P9 flaring emissions could contribute, though. P9 is reported as offline on the survey day, which agrees with the measurements showing no elevated CH₄. For all sampled Dutch installations together, we find that our estimated flux of $(122.7 \pm 9.7) \text{ kg h}^{-1}$ deviates by a factor 0.7 (ranging from 0.35-12 for individual facilities) from reported values (183.1 kg h^{-1}). A comparison with operator-reported data for offshore installations in the Norwegian Sea by Foulds et al. (2022) shows that although there are deviations for individual facilities, reported data agree similarly well on aggregate for a larger sample size (18 facilities) with the measured fluxes being smaller than reported emissions by a factor 0.8 (ranging from 0.1-22 for individual facilities).

3.1.4 Comparison to a ship-based top-down study

The planning for the flight on 2019/05/06 around Dutch installations relied on a ship-based top-down study conducted by the Netherlands Organisation for Applied Scientific Research (TNO) in 2018 (Hensen et al., 2019). With the aim to derive CH₄ emission fluxes, measurements were taken at distances up to ~3 km downwind of 33 platforms in November 2018. CH₄ was measured with a QCL-ILC spectrometer (Aerodyne Research, Inc.) and a Picarro instrument, whereby the inlet was installed at 35 m above sea level. The results shown in Table 1 were obtained by combining the measurements with a Gaussian plume model and a tracer-release experiment. The derived fluxes range from 10 kg h⁻¹ to 252 kg h⁻¹. For P8 and P11 our fluxes are within the range of the determined fluxes from the ship-based study, whereas in case of P7 and P10 our measured fluxes are smaller. For the studied 4 Dutch facilities in aggregate, our measured fluxes ($(122.7 \pm 9.7) \text{ kg h}^{-1}$) are smaller with respect to the ship-based measurements ($216.7 \text{ kg h}^{-1} - 536.8 \text{ kg h}^{-1}$) and deviate by factor 0.2-0.6.

3.2 Correlation between CH₄ and C₂H₆ for all platforms

For all sampled installations for which enhanced CH₄ was detected, we observe clear correlations with co-emitted C₂H₆, which is an indicator for fossil fuel emissions (Lowry et al., 2020; Peischl et al., 2018; Hausmann et al., 2016; Smith et al., 2015). C₂H₆ to CH₄ molar ratios of fossil fuels depend on the type of field/reservoir (gas, gas condensate, oil). Since the Southern North Sea region contains predominantly dry gas fields with relatively low gas condensate (wet gas) production, we expect



low C_2H_6 to CH_4 ratios ranging from 1-5% (dry gas) and 5-10% (gas condensate) (Xiao et al., 2008, Jones et al., 1999) or 1-6% (dry gas) and > 6% (wet gas) (Yacovitch et al., 2014, Whiticar et al., 1994). We calculate an C_2H_6 to CH_4 molar ratio for each transect from the integrated plume area of the respective CH_4 and C_2H_6 enhancement, and take the average over all transects for each sampled installation. Measured values range from 2.5% to 7.8%. We compare the measured ratios to reported values from the OGA Shell/ExxonMobil Geochemistry Database for Central North Sea (2017) for UK sites and the NLOG for Dutch sites (for all measured and reported values see Table D1 in the Appendix D). The reported C_2H_6 to CH_4 ratio for the UK installation P4 is 0.3% higher than the observed value. Compared to ratios measured downstream of Dutch facilities, the reporting underestimates the measurements, except for one facility (P11). In general, the dry gas and gas condensate binary categorization matches for the observed and reported ratios.

3.3 Correlation between CH_4 and CO_2 for selected platforms

Enhanced CO_2 mole fractions accompanied the CH_4 enhancements at five installations (P1, P2, P4, P7, P10) indicating a combustion source from either flared CH_4 or other combustion sources such as turbines or engines. For P8 and P11 C_2H_6 was enhanced while no CO_2 enhancement was observed (< LoD). Figure 3 shows the time series for a transect flown downwind of P1 with simultaneous enhancements in CH_4 , CO_2 and C_2H_6 mole fractions as an example of the observed plumes. The CO_2 flux is determined from the gradient of a linear regression between the CO_2 and CH_4 enhancements since both species are detected by the same instrument (Picarro Analyzer). For three of the platforms (P1, P4, P10), CH_4 and CO_2 were well-correlated and CO_2 fluxes have been determined.

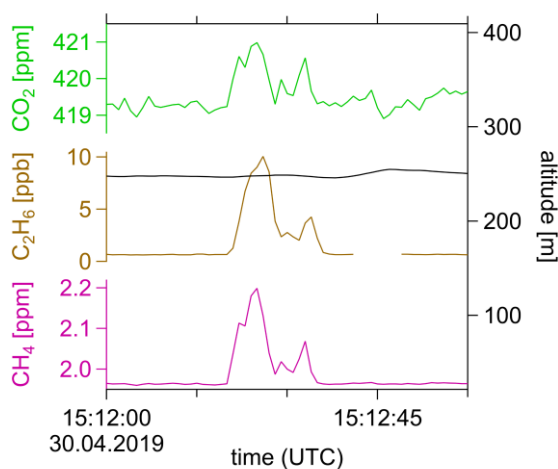


Figure 3. Time series (1 Hz) of a transect at 250 m altitude downwind of P1: Coinciding elevations in CO_2 (green), C_2H_6 (brown) and CH_4 (magenta) molar ratios. C_2H_6 is a tracer for fossil fuel emission and CO_2 indicates a combustion source.



Table D1 in the Appendix D shows the measured CO₂ fluxes along with inventory emission data from the UK point-source inventories NAEI and EEMS and Dutch operator data. For P1 the NAEI inventory matches within the uncertainties, but states lower emissions from the P4 platform complex. According to EEMS, which categorizes emissions into turbines/engines, fugitives, venting and flaring, CO₂ emissions arise mainly from the combustion of diesel and gas in turbines and engines. Only
335 for the platform complex P5 minor emissions from fugitives and venting are listed. In EEMS flaring emissions are zero for all UK platforms. This is inconsistent with data from the UK Oil and Gas Authority, which reports that 4% of CO₂ emissions in the SNS region are supposed to arise from flaring in 2019 (OGA, 2020). From the amount of CO₂ and CH₄ flaring emissions in 2019 in the SNS and Irish Sea region given in the Flaring and Venting Report (OGA, 2020), the unburnt fraction, i.e. the ratio of unburnt CH₄ to CO₂ from flaring emissions, is 6.4%. If we calculate this ratio for the sampled CH₄ and CO₂ plumes at
340 the UK platforms, we get higher ratios: 37.2% (P1) and 15.9% (P4). This means that either there is no flaring on the platform, or if some flaring occurred, there were additional CH₄ fugitive or venting sources. Comparing to Dutch operator data, we find that around two Dutch platforms (P8, P11) no simultaneously emitted CO₂ was detected, although Dutch operator data states CO₂ emission on the survey date. For P10 we derive a CO₂ flux half the size of the emissions reported for the survey date. Dutch operator data explicitly excludes flaring sources for P10 and P11 (see Table 1) and lists only combustion sources such
345 as turbines and engines. To sum up, from the measured total emissions we cannot clearly differentiate flaring from other combustion sources. But if there were any flaring sources, there must have been additional fugitive/venting CH₄ sources according to the measured CH₄ to CO₂ ratios.

3.4 Loss rates

In this section we determine loss rates, i.e. the ratio of gas lost to the atmosphere to dry gas production rates. We calculate the amount of gas lost to the atmosphere from the determined CH₄ emission rates and the CH₄ mass % from the OGA Shell/ExxonMobil Geochemistry Database for Central North Sea (2017) for UK sites and from the operator data for Dutch
350 sites. UK production rates are given as monthly values by OGA. We include production from upstream fields with only subsea wells and no platform infrastructure. Dutch production data was provided by Dutch operators for the specific survey day. For three UK facilities (P3, P5, P6) no emissions were detected, although they were producing during the month of survey. According to the Dutch operator, P9 did not produce on the survey day, and we did not detect a plume either.
355

Determined loss rates for Dutch and UK sites are smaller than 1.0%, except for P4, which shows an higher loss rate of 2.9% (see Appendix E for individual production rates and loss rates). Besides the fact, that P4 is a multi-platform complex and relatively old, i.e. producing since 50 years, there is no indication of abnormal activities on the survey date.



3.4.1 Comparison with airborne studies in other regions (Norwegian Sea, Northern Gulf of Mexico)

360 Figure 4 depicts the determined CH₄ emission rates and production rates from this study compared to the results obtained in two other airborne studies conducted by Foulds et al. (2022) in the Norwegian Sea and Gorchov Negron et al. (2020) in the Northern Gulf of Mexico.

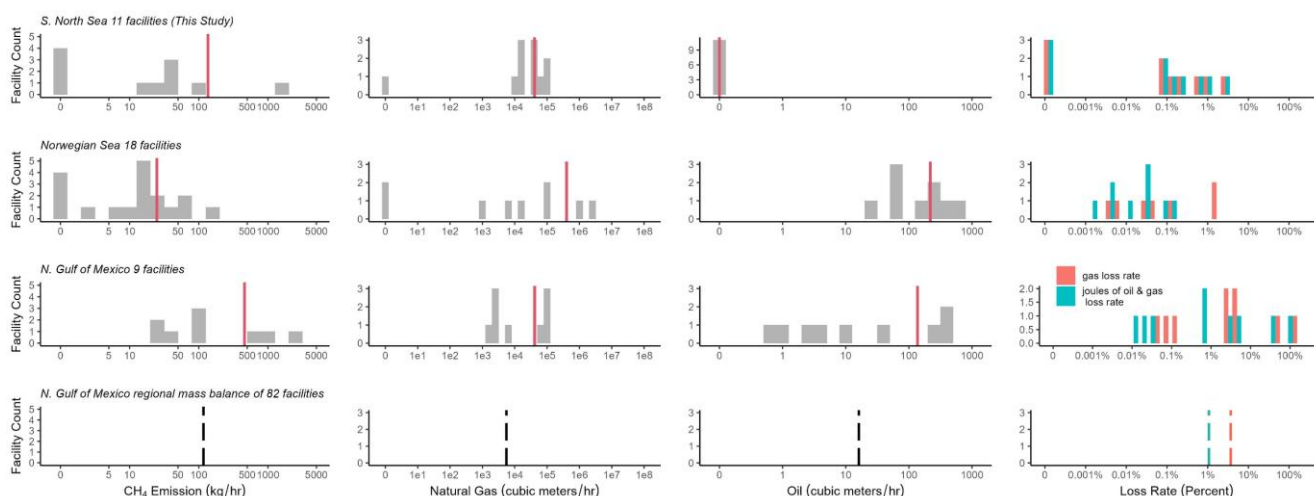


Figure 4. Comparison of measured CH₄ emission rates (first column), corresponding natural gas (second column) and oil (third column) production rates and loss rates (fourth column) in the Southern North Sea (this study) with two other airborne studies conducted in the Norwegian Sea (Foulds et al., 2022) and in the Northern Gulf of Mexico (Gorchov Negron et al., 2020). Red lines denote the respective average values. The dotted lines show the average value obtained in a regional mass balance in the Northern Gulf of Mexico. The facility count does not include satellite structures.

The CH₄ emission fluxes for individual facilities, i.e. rates, calculated in this study compare to the emission rates determined
365 in the Norwegian Sea and in the Northern Gulf of Mexico (see left side of Figure 4). The emission rate of P4 is as high as the emissions measured around similar infrastructure types in the Northern Gulf of Mexico, i.e. multi-platform complexes in shallow water, which equally show emission rates higher than 500 kg h⁻¹. In the Gulf inconstant temporal variability of those infrastructure types was seen, what might correspond to the non-detectable emissions of the multi-platform complex P5. Comparing average absolute emission rates per facility (red vertical lines), the lowest average emission rates were determined
370 around 18 facilities in the Norwegian Sea (24 kg h⁻¹) and highest emission rates around 9 facilities in the Gulf (457 kg h⁻¹) with a factor of 19 difference. Our average emission estimate in the Southern North Sea is 136 kg h⁻¹ and compares well with the average absolute emission rate in a regional mass balance in the Gulf with a larger sample size (117 kg h⁻¹). When excluding the multi-platform complex P4, the Southern North Sea average emission estimate amount to 23 kg h⁻¹, which compares well with the average emission rate in the Norwegian Sea, where no multi-platform complex was sampled.

375 In contrast to the Southern North Sea, where gas (with little gas condensate) production dominates, in the Northern Gulf of Mexico natural gas is produced as a side product from oil exploitation (associated gas) and in the Norwegian Sea both oil and



gas production takes place. The natural gas production rates for the facilities in the Southern North Sea shown in the second column in Figure 4, are on average one order of magnitude smaller than in the Norwegian Sea and one order of magnitude higher than in the Gulf regional estimate, but almost the same value as the Gulf facility-wise estimate. Average oil production rates in the Norwegian Sea and in the Northern Gulf of Mexico are comparable.

Total loss rates, i.e. all gas lost to the atmosphere divided by total production rates in the respective region, can be determined either from gas production only or from the sum of oil and gas production. Thereby, we convert oil and gas production rate units according to the energy content. Considering only gas production, the total loss rate in the Southern North Sea (0.50% (0% - 2.8%)) is one order of magnitude higher than in the Norwegian Sea (0.02% (0.003% - 1.6%)) and one order of magnitude smaller than in the Gulf. The latter amount to 1.9% (0.04% - 128%) for the facility-level measurements and 3.7% for the regional measurements. Including oil production, total loss rates in the Norwegian Sea (0.01% (0.001% - 0.2%)) and in the Gulf (0.51% (0.01% - 112%)) for the facility study; 1.1% for the regional study) are reduced. Thus, total loss rates in the Southern North Sea and in the Gulf compare to each other, when including oil production, and total loss rates in the Norwegian Sea are still one order of magnitude smaller compared to the other regions, but span over 3 orders of magnitude.

4 Conclusion

We report CH₄ flux estimates for six UK and five Dutch offshore gas production installations in the Southern North Sea derived from airborne measurements conducted in spring 2019. We identified the observed CH₄ enhancements as emissions arising from natural gas based on co-emitted C₂H₆ and derive C₂H₆ to CH₄ ratios for each offshore installation. Comparison with a ship-based top-down study conducted around Dutch facilities in 2018 (Hensen et al., 2019) shows that our derived CH₄ fluxes deviate by a factor 0.2-0.6 being smaller with respect to fluxes derived by Hensen et al. Our CH₄ flux estimates were compared with different bottom-up inventories available for this region, including the Global Fuel Exploitation Inventory (GFEI) (Scarpelli et al., 2019), the UK Environmental and Emissions Monitoring System database (EEMS), the UK National Atmospheric Emissions Inventory (NAEI), and direct facility-level reporting by Dutch operators. In general, the comparison for individual facilities shows a large discrepancy between the top-down derived emissions and all bottom-up (inventory and reported) estimates, which may be expected because of the nature of single snap-shot measurements per facility in this study and potential temporal variability per facility demonstrated via repeat measurements by Foulds et al. (2022). The largest discrepancy exists with the annual emission data from the globally gridded GFEI inventory for the year 2019, showing that measured aggregated emissions from UK and Dutch sites are higher by a factor of ~ 21 and ~ 279, respectively. On the one hand, these high discrepancy factors reflect the weaknesses in using global inventories based on Tier 1 methods for field-specific emissions characterizations, especially when comparing with snap-shot measurements. On the other hand, Dutch UNFCCC reported emissions, which the inventory is based on, are much smaller compared with UK UNFCCC reporting and could give rise to the exceptionally large factor for Dutch sites. Our top-down emission fluxes for all sampled UK installations in aggregate deviate from UK national annualized emission data from NAEI and EEMS for the year 2018 by factors of 6 and



12, respectively. Surprisingly, NAEI and EEMS inventory data are mutually inconsistent for four out of six installations, although the NAEI is based on the EEMS operator-based reporting. Latest UK national inventory data available for 2019 from EEMS deviate slightly less from the measurements with the latter being a factor 11 higher for all sampled UK facilities in aggregate. According to the EEMS inventory, CO₂ emissions measured around UK facilities and correlating with CH₄ emissions are solely attributable to combustion sources (turbines, engines) while flaring emissions are reported as zero for both CO₂ and CH₄. The measurements in this study cannot differentiate flaring from other combustive sources, and thus rule out flaring. Still, the measured ratios of emitted CH₄ to CO₂ point at existing venting/fugitive CH₄ sources, whereby flaring sources could be contributing.

As expected, the best agreement with our flux estimates exists with facility-level reporting from Dutch operators for the specific survey date. The measurements deviate by a factor of 0.7 (0.35-12) and are smaller with respect to Dutch reported emissions for all sampled facilities in aggregate. Our results for operator-based facility-level reporting compare very well to a study conducted in the Norwegian Sea by Foulds et al. (2022), which find their measurements deviating by a factor 0.8 and being smaller compared to the reporting by operators. We conclude that for sites with operator-based facility-level reporting in Dutch waters, – as suggested in the reporting framework Oil and Gas Methane Partnership 2.0 (www.ogmpartnership.com) – the highest accuracy is demonstrated compared to measurements. The adoption of facility-level estimation in national inventories would be expected to increase the accuracy of national CH₄ emissions accounting for the offshore oil and gas sector. To improve comparisons of top-down and bottom-up observation and resolve discrepancies, generating bottom-up inventories at facility-scale and accounting for temporal variability when including top-down measurements would be extremely valuable.

A regional comparison to airborne studies in the Norwegian Sea (Foulds et al., 2022) and in the Northern Gulf of Mexico (Gorchov Negron et al., 2020) shows that the absolute facility-level emission rates agree with the general distribution found in other offshore basins. This is despite differing gas production rates, which span two orders of magnitudes across geographies. Including oil production rates, total loss rates of the Southern North Sea compare to total loss rates in the Gulf, whereas loss rates in the Norwegian Sea are one order of magnitude smaller. As a consequence of the similar absolute emission rates, mitigation is needed virtually equally across geographies. Further, average absolute emission rates in this study are substantially larger in the UK compared to NL, which is largely driven by one super-emitter in the UK. The emission of the super-emitter is as high as the emissions measured around similar infrastructure types (multi-platform complexes in shallow water) in the study in the Northern Gulf of Mexico, but additional sampling in future studies is needed to investigate representativeness.



Appendices

A. Example for flux calculation for P1

In the following, the CH₄ flux calculation is illustrated by using observations of platform P1 on 30 April 2019.

440 Measurements were performed downwind at a distance of around 2-3 km from the platform (wind direction $(179.5 \pm 29.8)^\circ$; perpendicular wind speed $V_{\perp} = (3.2 \pm 1.5)$ m/s). To fully capture the emitted CH₄ plume dispersed within the boundary layer, which extended up to (420 ± 20) m, vertically stacked transects were flown between 97 m and 305 m. Figure A.1 shows the downwind horizontal transects with CH₄ mole fractions color-coded and the corresponding time series. CH₄ enhancements were detected in all seven transects. We calculated CH₄ fluxes for each transect resulting in a total flux of (86.4 ± 18.9) kg h⁻¹.
 445 ¹. The uncertainty is given for confidence intervals of 1 standard deviation and arises mainly due to wind measurements.

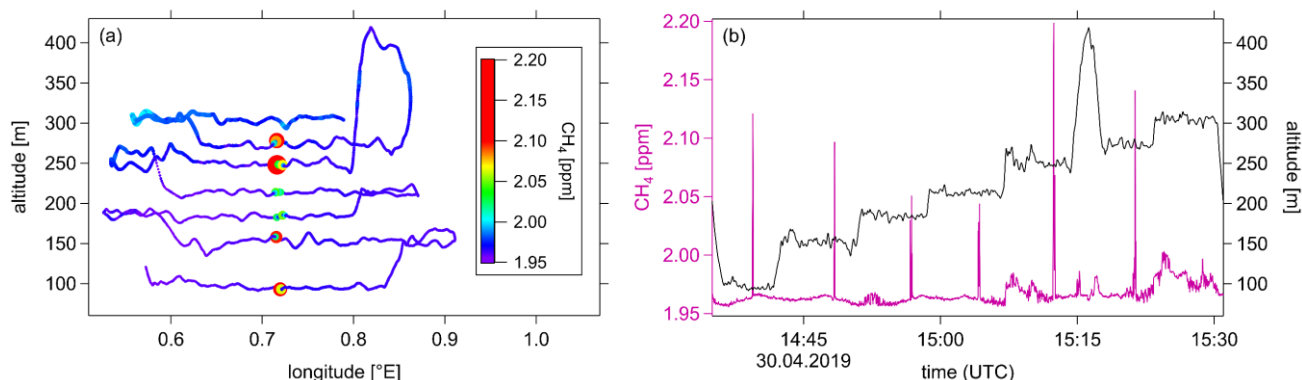


Figure A1. Example for measurements downwind of platform P1 during the offshore flight on 30 April 2019: (a) horizontal transects at altitudes between 94 m and 304 m above sea level. CH₄ enhancements are elucidated with a color-scale, whereby the size of plotted symbols is scaled to CH₄ molar ratios. (b) corresponding CH₄ time series.

B. Uncertainty analysis for flux calculation

We use the Gaussian error propagation to determine the uncertainty of the flux calculation, represented as confidence intervals of 1 standard deviation (see eq. (1) and (2) in subsection 2.2). The uncertainties of the calculated CH₄ fluxes for each layer i
 450 result from the uncertainties of each measured parameter q (eq. B1). These parameters are the elevated CH₄ molar ratios ΔC_i , wind speed V_{\perp} , pressure p_i , temperature T_i , plume width Δx_i and plume height D_i . We calculate the uncertainty u of the total flux with equation B2.

$$u(\text{Flux}_i) = \overline{\text{Flux}_i} \cdot \sqrt{\sum_q^{\text{parameters}} \left(\frac{u(q)}{q}\right)^2} \quad (\text{B1})$$

$$u(\text{Flux}_{\text{total}}) = \sqrt{\sum_i^{\text{transects}} u(\text{Flux}_i)^2} \quad (\text{B2})$$

455 For ΔC_i the CH₄ molar ratios measured in- (C_i) and outside (C_0) of the plume are used (eq. (A3)). Both C_i and C_0 have a systematic uncertainty resulting from the Picarro instrument uncertainty of 1.2 ppb (France et al., 2021). The background molar



ratio at each point j within the plume boundaries a and b is determined from an interpolation between $C_{0,a}$ and $C_{0,b}$, which are the mean CH_4 molar ratios within 30 s before and after the plume. The uncertainty of the interpolated background at each point $u(\Delta C_{0,j})$ is calculated from the standard deviations $\sigma_{0,a}$ and $\sigma_{0,b}$ of $C_{0,a}$ and $C_{0,b}$ (eq. (A4)). The parameter n denotes the number of points within the plume boundaries.

$$u(\Delta C_i) = \sqrt{\sum_a^b (u(C_{i,j})^2 + u(C_{0,j})^2)} \quad (\text{B3})$$

$$u(\Delta C_{0,j}) = \sqrt{(\sigma_{0,a} \cdot \frac{n_i-j}{n_i})^2 + (\sigma_{0,b} \cdot \frac{j}{n_i})^2} \quad (\text{B4})$$

We determine the perpendicular wind speed from the average aircraft heading, measured average horizontal wind speed and average wind angle over all transects. The uncertainty of the perpendicular wind speed $u(V_\perp)$ is a result of the standard deviations and valid for all transects:

$$u(V_\perp) = \sqrt{\left(\frac{\partial V_\perp}{\partial \text{heading}} \cdot \sigma_{\text{heading}}\right)^2 + \left(\frac{\partial V_\perp}{\partial \text{wind speed}} \cdot \sigma_{\text{wind speed}}\right)^2 + \left(\frac{\partial V_\perp}{\partial \text{wind angle}} \cdot \sigma_{\text{wind angle}}\right)^2} \quad (\text{B5})$$

For the uncertainties of pressure $u(p_i)$ and temperature $u(T_i)$ the standard deviations of the mean values across the plume and the 30 s background are taken.

The plume width is determined by the distance the aircraft covered while crossing the plume. Thereby, the velocity of the aircraft is multiplied with the time span of the plume. The uncertainty of the plume width $u(x_i)$ is derived from the uncertainty (standard deviation) of the measured velocity of the aircraft.

Since we assume a well-mixed plume within the boundary layer, the uncertainty of plume height $u(D_i)$ is characterized by the uncertainty arising from the estimation of the boundary layer height. Therefore, $u(D_i)$ is only relevant for the uncertainty of the flux calculated for the uppermost layer.

475 **C. FLEXPART Dispersion Model: Example footprint analysis for the multi-platform complex P4 (backward simulation)**

The model study concludes, that 9 out of 19 platforms of the complex could have contributed to the measured CH_4 enhancement (flight track with color-coded CH_4 in Figure C1). None of the possible emitters is listed in the inventories as single platforms.

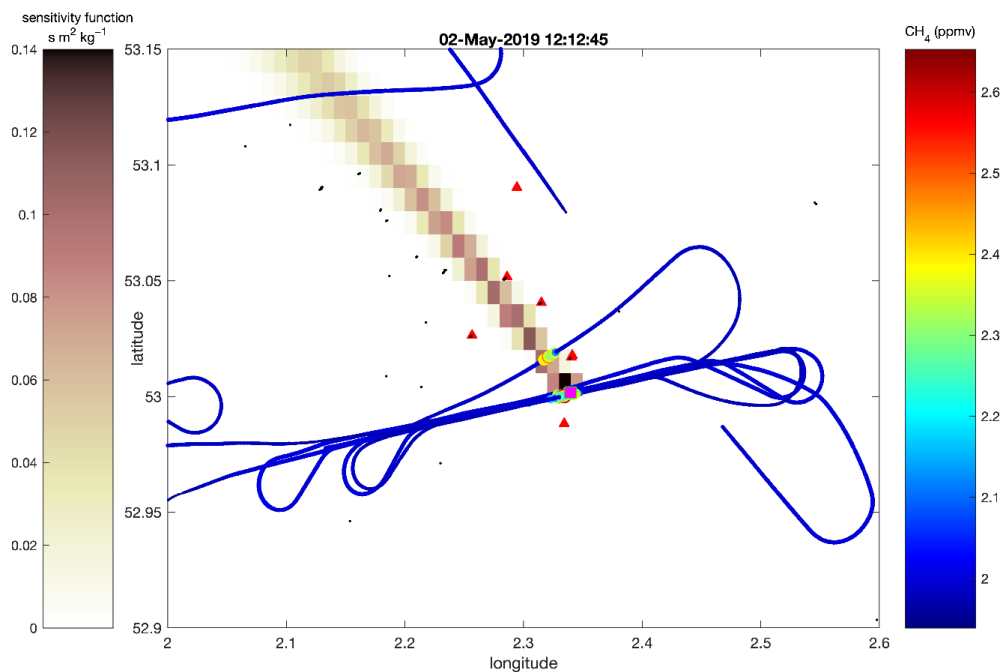


Figure C1: Footprint analysis for the multi-platform complex P4 (backward simulation) sampled during flight 327: The flight track is shown with color-coded CH₄ in units of ppmv. The particle density is shown with a brownish scale. Black markers symbolize the installations in the area and red markers show all installations which could have contributed to the measured plume.

480

D. Comparison of C₂H₆ to CH₄ ratios and CO₂ fluxes with reported values



Table D1. Measured and reported (OGA, NLOG) C₂H₆ to CH₄ ratios for all sampled platforms. All installations for which CH₄ was enhanced were accompanied by co-emitted C₂H₆. No detected C₂H₆ and CO₂ enhancements are indicated with < LoD. Measured CO₂ emissions are compared to UK inventory data (NAEI, EEMS) and Dutch operator data. Information on emission processes is given for venting (vent), fugitives (fug) and flaring (flar). CO₂ emissions are rounded to two significant digits.

Survey date	30 April 2019			2 May 2019			6 May 2019				
	UK			UK			NL				
Country	P1	P2	P3	P4	P5	P6	P7	P8	P9	P10	P11
Installation				complex	complex						
C ₂ H ₆ /CH ₄ [%]	This study	4.3 ± 0.1	2.5 ± 0.6	< LoD	< LoD	< LoD	5.6 ± 0.2	4.3 ± 0.4	< LoD	7.8 ± 0.4	5.3 ± 0.2
	OGA/NLOG	n.a.	n.a.	3.3	3.2	4.9	3.3	3.6	4.3	6.0	6.1
CO ₂ flux [kg/h]	This study	640 ± 230	weak correlation	< LoD	21770 ± 5230	< LoD	< LoD	weak correlation	< LoD	5300 ± 680	< LoD
	NAEI (2018)	410	390	200	3110	4160	1070	n.a.	n.a.	n.a.	n.a.
Reporting by operators	EEMS (2018/2019)	all	1490 / 1430 / 740 /	740 /	11400 / 15260 /	3930 /	16520	330	0	10690	570
		turbines, engines	1490 / 1430 / 740 /	740 /	11400 / 15260 /	3930 /	turbines, furnaces, vent	turbines, vent	turbines, power generators	turbines, engines, furnaces, diesel	
		fug	0 / 0	0 / 0	n.a. /	0 / 0	0.07 /	0 / 0			
Reporting by operators	EEMS (2018/2019)	vent	0 / 0	0 / 0	0 / 0	0.07 /	0.02 /				
		flar	0 / 0	0 / 0	0 / 0	0 / 0	0.08	0.02			
Reporting by operators		n.a.	n.a.	n.a.	n.a.	n.a.	n.a.	n.a.	n.a.	n.a.	n.a.



E. Production rates and loss rates (including non-emitting installations)

485 Figure E1 shows gas lost to the atmosphere, which is calculated from CH₄ emission rates and the CH₄ mass % (UK sites: OGA
Shell/ExxonMobil Geochemistry Database for Central North Sea (2017); NL sites: operator data). The determined loss rates
are the ratio of gas loss and dry gas production, i. e. normalized CH₄ emissions against natural gas production rates.

Table E1 shows platform production rates along with calculated loss rates. No loss rates were determined for installations,
where emissions were below detection limit and thus, no enhancements measured (abbreviation “no enh.”). Z1-Z8 are non-
490 emitting installations from fly-bys. Individual platform production data for 2019 were taken from the UK Oil and Gas Authority
(OGA), the NLOG and operator reported data. UK production rates are given as monthly values by OGA. Thereby, we include
production from upstream fields with only subsea wells and no platform infrastructure. Dutch production data was provided
by Dutch operators for the specific survey day.

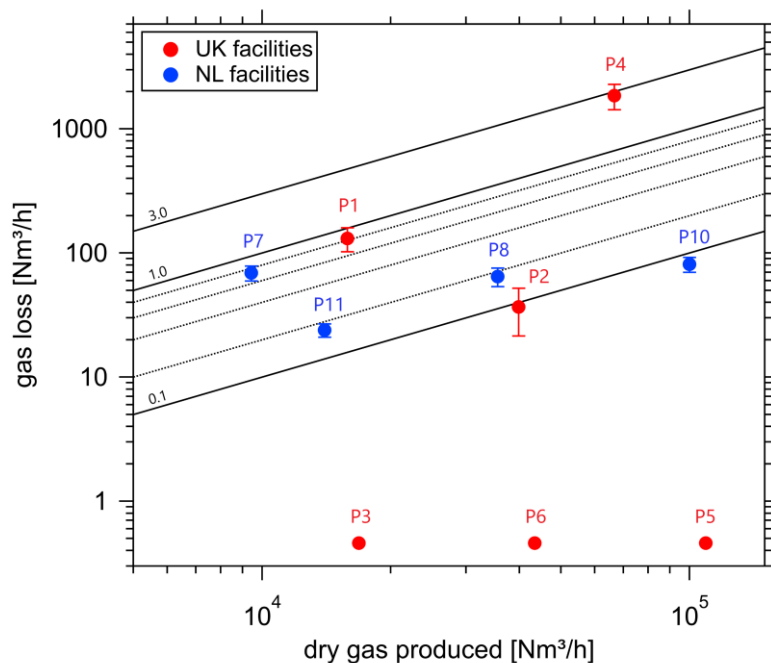


Figure E1. Gas lost to the atmosphere against the amount of dry gas produced in norm cubic meters (Nm³) per hour (UK: OGA, NL: operator data). Dutch platforms are shown in blue, UK platforms in red. Note that no downwind enhancements were detected for 4 installations (P3, P5, P6, P9) with only P9 (NL installation, excluded) not producing. Lines of constant loss rates (%) are shown in black.



Table E1. Reported production rates and calculated loss rates for sampled UK (P1-P6) and Dutch (P1-P11) installations. Z1-Z8 are (non-emitting) installations from fly-bys.

facility	Dry gas production (OGA (UK), NLOG (Dutch)) [Nm ³ /month]	Operator reported gas production [Nm ³ /day]	loss rate [%]	loss rate uncertainty [%]	Start of production [yr]
P1 ^a	10238885 (+ 98 Nm ³ gas condensate)	n.a.	0.83	0.19	1988
P2 ^b	25765475	n.a.	0.09	0.04	1990
P3	28090814 (+ 44 Nm ³ gas condensate)	n.a.	no enh.	no enh.	1967
P4 ^b	44571997 (+ 194 Nm ³ gas condensate)	n.a.	2.79	0.68	1968
P5	72934875 (+ 72 Nm ³ gas condensate)	n.a.	no enh.	no enh.	1968
P6 ^b	11259835 (+ 150 Nm ³ gas condensate)	n.a.	no enh.	no enh.	1969
P7	855993	226383	0.73	0.11	1977
P8	11049455	854000	0.18	0.03	1983
P9	0	0	no enh.	no enh.	1991
P10	28340954	2400000 ^c	0.08	0.01	1994
P11	13314491	335996	0.17	0.02	2005
Z1 ^d	3145322 (+ 3 Nm ³ gas condensate)	n.a.	no enh.	no enh.	1993
Z2 ^d	14321737 (+ 198 Nm ³ gas condensate)	n.a.	no enh.	no enh.	2003
Z3	0	n.a.	no enh.	no enh.	1987
Z4	3794100	n.a.	no enh.	no enh.	1985
Z5	0	n.a.	no enh.	no enh.	2007
Z6	0	n.a.	no enh.	no enh.	2004
Z7	13542079	n.a.	no enh.	no enh.	2002
Z8	3251685	n.a.	no enh.	no enh.	1990

^a Zero gas production for the month of survey. Production only of delivering subsea wells.

^b including one delivering subsea well

^c gas production with little gas condensate (gas condensate is injected back into export gas)

^d unmanned installation

Code and data availability

Access to the data is provided via request at the British Antarctic Survey Polar Data Centre.



Author contributions

The paper was written and figures were prepared by MP with contributions from AMGN. Modelling work was done by IP.
500 All authors contributed to the discussion. The experimental design and flight planning were performed by GA, JL, TLC and DL. Aircraft set-up and in-flight measurements were performed by PB, PD, SA, SY, AW, TLC and JF. Laboratory measurements were made by REF, and data processing and calibrations were performed by JF, LH, PB, JS, PD.

Competing interests

The authors declare that they have no conflict of interest.

505 Acknowledgements

This work was funded under the Climate & Clean Air Coalition (CCAC) Oil and Gas Methane Science Studies (MSS) programme, hosted by the United Nations Environment Programme. Funding was provided by the Environmental Defense Fund (EDF), Oil and Gas Climate Initiative, European Commission, and CCAC.

Financial Support

510 This research has been supported by the Climate & Clean Air Coalition (CCAC) (grant no. DTIE18-EN018).

References

Brown, P., Cardenas, L., Choudrie, S., Del Vento, S., Karagianni, E., MacCarthy, J., Mullen, P., Passant, N., Richmond, B., Thistlethwaite, G., Thomson, A., Wakeling, D.: UK Greenhouse Gas Inventory 1990 to 2020: Annual Report for submission under the Framework Convention on Climate Change, Ricardo Energy & Environment for the Department for Business,
515 Energy & Industrial Strategy (BEIS), Issue 1, ISBN: 978-0-9933975-8-5, 2022

Cain, M., Warwick N. J., Fisher, R. E., Lowry, D., Lanoisellé, M., Nisbet, E. G., France, J., Pitt, J., O'Shea, S., Bower, K. N., Allen, G., Illingworth, S., Manning, A. J., Bauguutte, S., Pisso, I., Pyle, J. A.: A study of a methane enhancement over the North Sea, *J. Geophys. Res.-Atmos.*, 122, 7630-7645, <https://doi.org/10.2002/2017JD026626>, 2017

Chen, Z., Yacovitch, T. I., Daube, C., Herndon, S. C., Wilson, D., Enoch, S., Allen, D. T.: Reconciling methane emission
520 measurements for offshore oil and gas platforms with detailed emission inventories: Accounting for emission intermittency, *ChemRxiv*. Cambridge: Cambridge Open Engage, Preprint, <https://doi.org/10.26434/chemrxiv-2022-dfjvv>, 2022



- European Commission, United States of America: Global Methane Pledge, Climate & Clean Air Coalition (CCAC), <https://www.ccacoalition.org/en/resources/global-methane-pledge> (last access 30 November 2022), 2021
- 525 Conley, S., Franco, G., Faloon, I., Blake, D. R., Peischl, J., Ryerson, T. B.: Methane emissions from the 2015 Aliso Canyon blowout in Los Angeles, CA. *Science*, 351(6279), 1317-1320, <https://www.science.org/doi/abs/10.1126/science.aaf2348>, 2016
- OPRED (BEIS): EEMS Atmospheric Emissions Calculations, Issue 1.810a, https://assets.publishing.service.gov.uk/government/uploads/system/uploads/attachment_data/file/136461/atmos-calcs.pdf (last access: 30 November 2022), 2008
- 530 Elvidge, C. D., Zhizhin, M., Hsu, F.-C., Baugh, K. E.: VIIRS Nightfire: Satellite Pyrometry at Night, *Remote Sens.*, 5(9), 4423-4449, <https://doi.org/10.3390/rs5094423>, 2013
- Elvidge, C. D., Zhizhin, M., Baugh, K., Hsu, F.-C., Ghosh, T.: Methods for Global Survey of Natural Gas Flaring from Visible Infrared Imaging Radiometer Suite Data, *Energies* 9(1), 14, <https://doi.org/10.3390/en9010014>, 2015
- European Commission: EU strategy to reduce methane emissions, https://energy.ec.europa.eu/documents_en?f%5B0%5D=document_title%3AEU%20methane%20strategy (last access: 30 November 2022), 2020
- 535 Eurostat (European Commission): Energy, transport and environment statistics – 2020 edition: Energy Production 2018 (p. 11), Publications Office of the European Union, <https://doi.org/10.2785/522192>, 2020
- Foulds, A., Allen, G., Shaw, J. T., Bateson, P., Barker, P. A., Huang, L., Pitt, J. R., Lee, J. D., Wilde, S. E., Dominutti, P., Purvis, R. M., Lowry, D., France, J. L., Fisher, R. E., Fiehn, A., Pühl, M., Bauguitte, S. J. B., Conley, S. A., Smith, M. L., 540 Lachlan-Cope, T., Pisso, J., Schwietzke, S.: Quantification and assessment of methane emissions from offshore oil and gas facilities on the Norwegian continental shelf, *Atmos. Chem. Phys.*, 22, 4303-4322, <https://doi.org/10.5194/acp-22-4303-2022>, 2022
- France, J. L., Bateson, P., Dominutti, P., Allen, G., Andrews, S., Bauguitte, S., Coleman, M., Lachlan-Cope, T., Fisher, R. E., Huang, L., Jones, A. E., Lee, J., Lowry, D., Pitt, J., Purvis, R., Pyle, J., Shaw, J., Warwick, N., Weiss, A., Wilde, S., 545 Witherstone, J., Young, S.: Facility level measurement of offshore oil and gas installations from a medium-sized airborne platform: method development for quantification and source identification of methane emissions. *Atmos. Meas. Tech.*, 14, 71-88, <https://doi.org/10.5194/amt-14-71-2021>, 2021



- Forster, P., Storelvmo, T., Armour, K., Collins, W., Dufresne, J.-L., Frame, D., Lunt, D.J., Mauritsen, T., Palmer, M. D.,
550 Watanabe, M., Wild, M., Zhang, H.: The Earth's Energy Budget, Climate Feedbacks, and Climate Sensitivity. In Climate
Change 2021: The Physical Science Basis. Contribution of Working Group I to the Sixth Assessment Report of the
Intergovernmental Panel on Climate Change [Masson-Delmotte, V., Zhai, P., Pirani, A., Connors, S. L., Péan, C., Berger, S.,
Caud, N., Chen, Y., Goldfarb, L., Gomis, M.I., Huang, M., Leitzell, K., Lonnoy, E., Matthews, J.B.R., Maycock, T.K.,
Waterfield, T., Yelekçi, O., Yu, R., Zhou, B. (eds.)]. Cambridge University Press, Cambridge, United Kingdom and New
555 York, NY, USA, pp. 923–1054, <https://doi.org/10.1017/9781009157896.009>, 2021
- Garman, K. E., Hill, K. A., Wyss, P., Carlsen, M., Zimmerman, J.R., Stirm, B. H., Carney, T. Q., Santini, R., Shepson, P. B.:
An Airborne and Wind Tunnel Evaluation of a Wind Turbulence Measurement System for Aircraft-Based Flux Measurements.
J. Atmos. Ocean. Technol., 23, 1696–1708, <https://doi.org/10.1175/JTECH1940.1>, 2006
- Gorchov Negron, A. M., Kort, E. A., Conley, S. A., Smith, M. L.: Airborne Assessment of Methane Emissions from Offshore
560 Platforms in the U.S. Gulf of Mexico. Environ. Sci. Technol., 54, 5112–5120, <https://doi.org/10.1021/acs.est.0c00179>, 2020
- Hausmann, P., Sussmann, R., Smale, D.: Contribution of oil and natural gas production to renewed increase in atmospheric
methane (2007–2014): top-down estimate from ethane and methane column observations. Atmos. Chem. Phys., 16, 3227–
3244, <https://doi.org/10.5194/acp-16-3227-2016>, 2016
- Hensen, A., Velzeboer, I., Frumau, K. F. A., van den Bulk, W. C. M., van Dinter, D.: Methane emission measurements of
565 offshore oil and gas platforms, TNO Report 2019 R1089, National Institute for Public Health and the Environment, RIVM,
<http://resolver.tudelft.nl/uuid:a9c705b9-ec88-4316-827f-f9d7ffbd05c2> (last access 30 November 2022), 2019
- Honig, E., Montfoort, J. A., Dröge, R., Guis, B., Baas, K., van Huet, B., van Hunnik, O. R.: Methodology report on the
calculation of emissions to air from the sectors Energy, Industry and Waste, RIVM report 2022-0001, National Institute for
Public Health and the Environment, <https://doi.org/10.21945/RIVM-2022-0001> (last access: 30 November 2022), 2022
- 570 Jones, V. T., Matthews, M. D., Richers, D. M.: Light hydrocarbons for petroleum and gas prospecting, Geochemical Remote
Sensing of the Subsurface, Handbook of Exploration Geochemistry, 7, 133–212, Elsevier, New York,
[https://doi.org/10.1016/S0168-6275\(00\)80029-X](https://doi.org/10.1016/S0168-6275(00)80029-X), 2000
- Klausner, T., Mertens, M., Huntrieser, H., Galkowski, M., Kuhlmann, G., Baumann, R., Fiehn, A., Jöckel, P., Pühl, M., Roiger,
A.: Urban greenhouse gas emissions from the Berlin area: A case study using airborne CO₂ and CH₄ in situ observations in
575 summer 2018, Elem Sci Anth, 8: 15, <https://doi.org/10.1525/elementa.411>, 2020



- Lan, X., Thoning, K. W., Dlugokencky, E. J.: Trends in globally-averaged CH₄, N₂O, and SF₆ determined from NOAA Global Monitoring Laboratory measurements, Version 2022-11, <https://doi.org/10.15138/P8XG-AA10>, 2022
- Lee, J. D., Mobbs, S. D., Wellpott, A., Allen, G., Bauguitte, S. J.-B., Burton, R. R., Camilli, R., Coe, H., Fisher, R. E., France, J. L., Gallagher, M., Hopkins, J. R., Lanoiselle, M., Lewis, A. C., Lowry, D., Nisbet, E. G., Purvis, R. M., O'Shea, S., Pyle, J.
580 A., Ryerson, T. B.: Flow rate and source reservoir identification from airborne chemical sampling of the uncontrolled Elgin platform gas release, *Atmos. Meas. Tech.*, 11, 1725–1739, <https://doi.org/10.5194/amt-11-1725-2018>, 2018
- Lowry, D., Fisher, R. E., France, J. L., Coleman, M., Lanoisellé, M., Zazzeri, G., Nisbet, E. G., Shaw, J. T., Allen, G., Pitt, J., Ward, R. S.: Environmental baseline monitoring for shale gas development in the UK: Identification and geochemical characterisation of local source emissions of methane to atmosphere, *Sci Total Environ*, 708:134600,
585 <https://doi.org/10.1016/j.scitotenv.2019.134600>, 2020
- Lyon, D. R., Zavala-Araiza, D., Alvarez, R. A., Harris, R., Palacios, V., Lan, X., Talbot, R., Lavoie, T., Shepson, P., Yacovitch, T. I., Herndon, S. C., Marchese, A. J., Zimmerle, D., Robinson, A. L., Hamburg, S. P.: Constructing a Spatially Resolved Methane Emission Inventory for the Barnett Shale Region, *Environ. Sci. Technol.*, 49, 13, 8147–8157, <https://doi.org/10.1021/es506359c>, 2015
- 590 MacKay, K., Lavoie, M., Bourlon, E., Atherton, E., O'Connell, E., Baillie, J., Fougère, C., Risk, D.: Methane emissions from upstream oil and gas production in Canada are underestimated, *Sci Rep* 11, 8041, <https://doi.org/10.1038/s41598-021-87610-3>, 2021
- Nara, H., Tanimoto, H., Tohjima, Y., Mukai, H., Nojiri, Y., Machida, T.: Emissions of methane from offshore oil and gas platforms in Southeast Asia, *Sci Rep* 4, 6503, <https://doi.org/10.1038/srep06503>, 2014
- 595 Nisbet, E. G., Manning, M. R., Dlugokencky, E. J., Fisher, R. E., Lowry, D., Michel, S. E., Lund Myhre, C., Platt, S. M., Allen, G., Bousquet, P., Brownlow, R., Cain, M., France, J. L., Hermansen, O., Hossaini, R., Jones, A. E., Levin, I., Manning, A. C., Myhre, G., Pyle, J. A., Vaughn, B. H., Warwick, N. J., White, J. W. C.: Very strong atmospheric methane growth in the 4 years 2014–2017: Implications for the Paris Agreement. *Global Biogeochemical Cycles*, 33, 318–342, <https://doi.org/10.1029/2018GB006009>, 2019
- 600 Oil and Gas Authority, OGA: UKCS Flaring and Venting Report. <https://ogauthorityreports.wixsite.com/ukcs-f-v-report-2020> (last access: 30 November 2022), 2020
- O'Shea, S. J., Allen, G., Gallagher, M. W., Bower, K., Illingworth, S. M., Muller, J. B. A., Jones, B. T., Percival, C. J., Bauguitte, S. J.-B., Cain, M., Warwick, N., Quiquet, A., Skiba, U., Drewer, J., Dinsmore, K., Nisbet, E. G., Lowry, D., Fisher,



- R. E., France, J. L., Aurela, M., Lohile, A., Hayman, G., George, C., Clark, D. B., Manning, A. J., Friend, A. D., Pyle, J.:
605 Methane and carbon dioxide fluxes and their regional scalability for the European Arctic wetlands during the MAMM project
in summer 2012. *Atmos. Chem. Phys.*, 14, 13159–13174. <https://doi.org/10.5194/acp-14-13159-2014>, 2014
- Pandey, S., Gautam, R., Houweling, S., van der Gon, H. D., Sadavarte, P., Borsdorff, T., Hasekamp, O., Landgraf, J., van
Kempen, T., Hoogeveen, R., van Hees, R., Hamburg, S. P., Maasakkers, J. D., Aben, I.: Satellite observations reveal extreme
methane leakage from a natural gas well blowout, *Proceedings of the National Academy of Sciences*, 116 (52) 26376-
610 26381, <https://doi.org/10.1073/pnas.1908712116>, 2019
- Peischl, J., Eilerman, S. J., Neuman, J. A., Aikin, K. C., de Gouw, J., Gilman, J. B., Herndon, S. C., Nadkarni, R., Trainer, M.,
Warneke, C., Ryerson, T., B.: Quantifying methane and ethane emissions to the atmosphere from central and western U.S. oil
and natural gas production regions. *Journal of Geophysical Research: Atmospheres*, 123, 7725– 7740,
<https://doi.org/10.1029/2018JD028622>, 2018
- 615 Pétron, G., Karion, A., Sweeney, C., Miller, B. R., Montzka, S. A., Frost, G. J., Trainer, M., Tans, P., Andrews, A., Kofler, J.,
Helmig, D., Guenther, C., Dlugokencky, E., Lang, P., Newberger, T., Wolter, S., Hall, B., Novelli, P., Brewer, A., Conley, S.,
Hardesty, M., Banta, R., White, A., Noone, D., Wolfe, D., Schnell, R.: A new look at methane and nonmethane hydrocarbon
emissions from oil and natural gas operations in the Colorado Denver-Julesburg Basin, *J. Geophys. Res. Atmos.*, 119, 6836-
6852, <https://doi.org/10.1002/2013JD021272>, 2014
- 620 Pisso, I., Sollum, E., Grythe, H., Kristiansen, N. I., Cassiani, M., Eckhardt, S., Arnold, D., Morton, D., Thompson, R. L., Groot
Zwaafink, C. D., Evangelou, N., Sodemann, H., Haimberger, L., Henne, S., Brunner, D., Burkhardt, J. F., Fouilloux, A.,
Brioude, J., Philipp, A., Seibert, P., Stohl, A.: The Lagrangian particle dispersion model FLEXPART version 10.4. *Geosci.
Model Dev.*, 12, 4955-4997, <https://doi.org/10.5194/gmd-12-4955-2019>, 2019
- Pitt, J. R., Allen, G., Bauguitte, S. J.-B., Gallagher, M. W., Lee, J. D., Drysdale, W., Nelson, B., Manning, A. J., Palmer, P. I.:
625 Assessing London CO₂, CH₄ and CO emissions using aircraft measurements and dispersion modelling. *Atmos. Chem. Phys.*,
19, 8931–8945, <https://doi.org/10.5194/acp-19-8931-2019>, 2019
- Riddick, S. N., Mauzerall, D. L., Celia, M., Harris, N. R. P., Allen, G., Pitt, J., Staunton-Sykes, J., Forster, G. L., Kang, M.,
Lowry, D., Nisbet, E. G., Manning, A. J.: Methane emissions from oil and gas platforms in the North Sea, *Atmos. Chem.
Phys.*, 19, 9787–9796, <https://doi.org/10.5194/acp-19-9787-2019>, 2019
- 630 Roiger, A., Thomas, J.-L., Schlager, H., Law, K. S., Kim, J., Schäfler, A., Winzierl, B., Dahlkötter, F., Krisch, I., Marelle, L.,
Minikin, A., Raut, J.-C., Reiter, A., Rose, M., Scheibe, M., Stock, P., Baumann, R., Bouarar, I., Clerbaux, C. George, M.,



- Onishi, T., Flemming, J.: Quantifying Emerging Local Anthropogenic Emissions in the Arctic Region: The ACCESS Aircraft Campaign Experiment. *Bull. Amer. Meteor. Soc.*, 96(3), 441-460, <https://doi.org/10.1175/BAMS-D-13-00169.1>, 2015
- 635 Saunois, M., Stavert, A. R., Poulter, B., Bousquet, P., Canadell, J. G., Jackson, R. B., Raymond, P. A., Dlugokencky, E. J., Houweling, S., Patra, P. K., Ciais, P., Arora, V. K., Bastviken, D., Bergamaschi, P., Blake, D. R., Brailsford, G., Bruhwiler, L., Carlson, K. M., Carrol, M. Castaldi, S., Chandra, N., Crevoisier, C., Crill, P. M., Covey, K., Curry, C. L., Etiope, G., Frankenberg, C., Gedney, N., Hegglin, M. I., Höglund-Isaksson, L., Hugelius, G., Ishizawa, M., Ito, A., Janssens-Maenhout, G., Jensen, K., Joos, F., Kleinen, T., Krummel, P. B., Langenfels, R. L., Laruelle, G. G., Liu, L., Machida, T., Maksyutov, S., McDonald, K. C., McNorton, J., Miller, P. A., Melton, J. R., Morino, I., Müller, J., Murguia-Flores, F., Naik, V., Niwa, Y.,
640 Noce, S., O'Doherty, S., Parker, R. J., Peng, C. Peng, S., Peters, G. P., Prigent, C., Prinn, R., Ramonet, M., Regnier, P., Riley, W. J., Rosentreter, J. A., Segers, A., Simpson, I. J., Shi, H., Smith, S. J., Steele, L. P., Thornton, B. F., Tian, H., Tohjima, Y., Tubiello, F. N., Tsuruta, A., Viovy, N., Voulgarakis, A., Weber, T. S., van Weele, M., van der Werf, G. R., Weiss, R. F., Worthy, D., Wunch, D. Yin, Y., Yoshida, Y., Zhang, W., Zhang, Z., Zhao, Y., Zheng, B., Zhu, Q., Zhu, Q., Zhuang, Q.: The Global Methane Budget 2000–2017, *Earth Syst. Sci. Data*, 12, 1561–1623, <https://doi.org/10.5194/essd-12-1561-2020>, 2020
- 645 Scarpelli, T. R., Jacob, D. J.: Global Fuel Exploitation Inventory (GFEI). Harvard Dataverse, V2, <https://doi.org/10.7910/DVN/HH4EUM>, 2019
- Scarpelli, T. R., Jacob, D. J., Maasakkers, J. D., Sulprizio, M. P., Sheng, J.-X., Rose, K., Romeo, L., Worden, J. R., Janssens-Maenhout, G.: A global gridded ($0.1^\circ \times 0.1^\circ$) inventory of methane emissions from oil, gas, and coal exploitation based on national reports to the United Nations Framework Convention on Climate Change. *Earth Syst. Sci. Data*, 12, 563–575,
650 <https://doi.org/10.5194/essd-12-563-2020>, 2020
- Schwietzke, S., Sherwood, O., Bruhwiler, L. M. P., Miller, J. B., Etiope, G., Dlugokencky, E. J., Englund Michel, S., Arling, V., A., Vaughn, B. H., White, J. W. C., Tans, P. P.: Upward revision of global fossil fuel methane emissions based on isotope database, *Nature* 538, 88–91, <https://doi.org/10.1038/nature19797>, 2016
- Smith, M. L., Kort, E. A., Karion, A., Sweeney, C., Herndon, S. C., Yacovitch, T. I.: Airborne Ethane Observations in the
655 Barnett Shale: Quantification of Ethane Flux and Attribution of Methane Emissions. *Environ. Sci. Technol.*, 59 (13), 8158-8166, <https://pubs.acs.org/doi/abs/10.1021/acs.est.5b00219>, 2015
- Stull, R. B. (1988). *An Introduction to Boundary Layer Meteorology*. In Atmospheric Sciences Library. Springer, Dordrecht. <https://doi.org/10.1007/978-94-009-3027-8>.



- 660 Tsagatakis, I., Richardson, J., Evangelides, C., Pizzolato, M., Pearson, B., Passant, N., Pommier, M., Otto, A.: UK Spatial Emissions Methodology: A report of the National Atmospheric Emission Inventory 2020, Issue Number 1, https://naei.beis.gov.uk/reports/reports?report_id=1082 (last access: 30 November, 2022), 2022
- Tullos, E. E., Stokes, S. N., Cardoso-Saldaña, F., J., Herndon, S. C., Smith, B. J., Allen, D. T.: Use of Short Duration Measurements to Estimate Methane Emissions at Oil and Gas Production Sites. *Environ. Sci. Technol. Lett.* 8 (6). 463-467, <https://doi.org/10.1021/acs.estlett.1c00239>, 2021
- 665 UNFCCC: Greenhouse Gas Inventory Data Interface, http://di.unfccc.int/detailed_data_by_party (last access: 14 March 2022), 2022
- Varon, D. J., McKeever, J., Jervis, D., Maasackers, J. D., Pandey, S., Houweling, S.: Satellite discovery of anomalously large methane point sources from oil/gas production. *Geophysical Research Letters*, 46, 13507-13516, <https://doi.org/10.1029/2019GL083798>, 2019
- 670 Weiss, A. I., King, J., Lachlan-Cope, T., Ladkin, R.: On the effective aerodynamic and scalar roughness length of Weddell Sea ice. *J. Geophys. Res.-Atmos.*, 116, D19119, <https://doi.org/10.1029/2011JD015949>, 2011
- Whiticar, M. J.: Correlation of natural gases with their sources. In *The petroleum system-from source to trap*. Magoon, L. B., Dow, W.G., Eds., AAPG, pp 261-283, 1994
- Xiao, Y., Logan, J. A., Jacob, D. J., Hudman, R. C., Yantosca, R., Blake, D. R.: Global budget of ethane and regional constraints on US sources, *J. Geophys. Res.*, 113(D21): 306, <https://doi.org/10.1029/2007JD009415>, 2008.
- 675 Yacovitch, Tara I., Herndon, S. C., Roscioli, J. R., Floerchinger, C., McGovern, R. M., Agnese, M., Pétron, G., Kofler, J., Sweeney, C., Karion, A., Conley, S. A., Kort, E. A., Nähle, L., Fischer, M. Hildebrandt, L., Koeth, J., McManus, J. B., Nelson, D. D., Zahniser, M. S., Kolb, C. E.: Demonstration of an Ethane Spectrometer for Methane Source Identification, *Environ. Sci. Technol.* 48, 14, 8028–8034, <https://doi.org/10.1021/es501475q>, 2014
- 680 Yacovitch, T. I., Daube, C., Herndon, S. C.: Methane Emissions from Offshore Oil and Gas Platforms in the Gulf of Mexico, *Environ. Sci. Technol.* 54, 6, 3530–3538, <https://doi.org/10.1021/acs.est.9b07148>, 2020
- Zavala-Araiza, D., Alvarez, R. A., Lyon, D. R., Allen, D. T., Marchese, A. J., Zimmerle, D. J., Hamburg, S. P.: Super-emitters in natural gas infrastructure are caused by abnormal process conditions. *Nat Commun* 8, 14012, <https://doi.org/10.1038/ncomms14012>, 2017



- 685 Zavala-Araiza, D., Omara, M., Gautam, R., Smith, M. L., Pandey, S., Aben, I., Almanza-Veloz, V., Conley, S., Houweling, S., Kort, E.A.: A tale of two regions: methane emissions from oil and gas production in offshore/onshore Mexico, Environ. Res. Lett., 16(2), <https://doi.org/10.1088/1748-9326/abceeb>, 2021