



**HAL**  
open science

## 4D electroactive and microporous polyHIPE-PEDOT scaffolds as a dynamic in vitro cell culture platform

Franziska Hahn, Ana Ferrández Montero, Mélodie Culot, Cedric Vancaeyzeele, Cedric Plesse, Rémy Agniel, Johanne Leroy-Dudal

► **To cite this version:**

Franziska Hahn, Ana Ferrández Montero, Mélodie Culot, Cedric Vancaeyzeele, Cedric Plesse, et al.. 4D electroactive and microporous polyHIPE-PEDOT scaffolds as a dynamic in vitro cell culture platform. ESB2023 (33rd Annual Conference of the European Society for Biomaterials), Sep 2023, Davos, Switzerland. hal-04400290

**HAL Id: hal-04400290**

**<https://hal.science/hal-04400290>**

Submitted on 17 Jan 2024

**HAL** is a multi-disciplinary open access archive for the deposit and dissemination of scientific research documents, whether they are published or not. The documents may come from teaching and research institutions in France or abroad, or from public or private research centers.

L'archive ouverte pluridisciplinaire **HAL**, est destinée au dépôt et à la diffusion de documents scientifiques de niveau recherche, publiés ou non, émanant des établissements d'enseignement et de recherche français ou étrangers, des laboratoires publics ou privés.

# 4D electroactive and microporous polyHIPE-PEDOT scaffolds as a dynamic *in vitro* cell culture platform

Franziska Hahn <sup>1,2</sup>, Ana Ferrández Montero <sup>1,2</sup>, Cédric Vancaeyzele <sup>1</sup>, Cédric Plesse <sup>1</sup>, Rémy Agniel <sup>2</sup>, Johanne Leroy-Dudal <sup>2</sup>

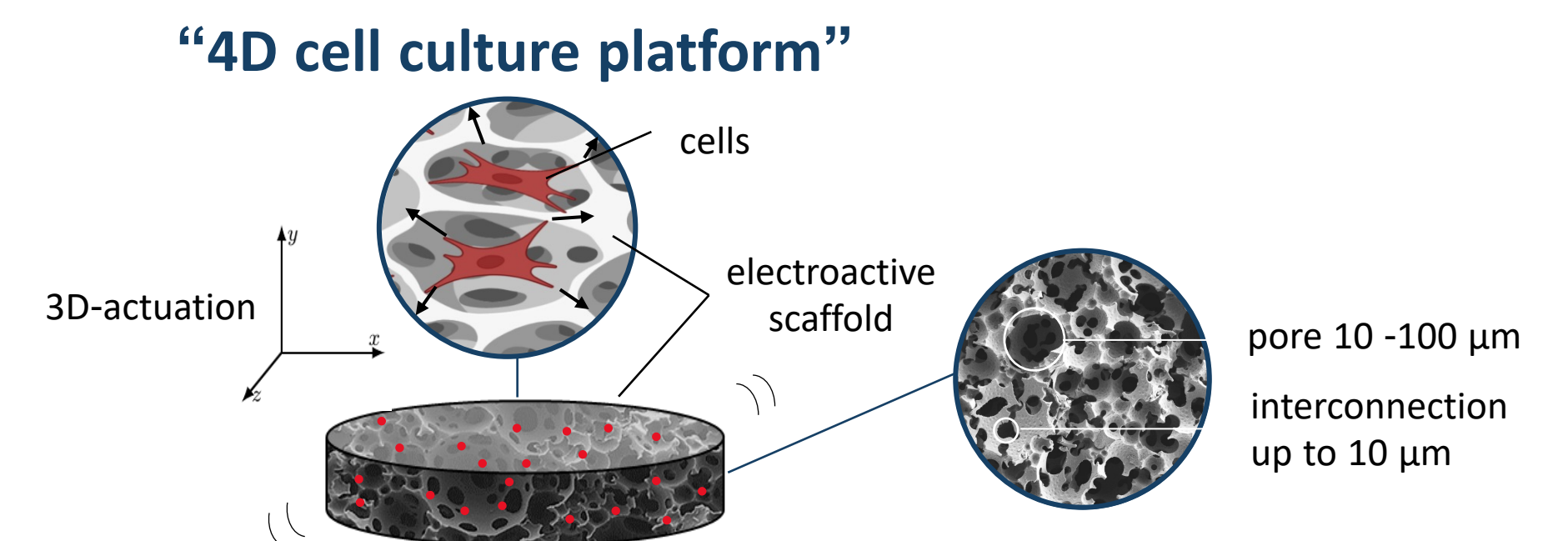
1) CY Cergy Paris Université, Laboratoire de Physicochimie des Polymères et des Interfaces (LPPI), Neuville sur Oise, France  
2) CY Cergy Paris Université, Equipe de Recherche sur les Relations Matrice Extracellulaire-Cellule (ERRMECe), Mec'up group, Neuville sur Oise, France

## Introduction

- In vivo*, cells are surrounded by an extracellular matrix (ECM)
- Signals from the ECM such as biochemical or biophysical cues regulate cell behaviour
- 3D cell cultures offer biologically superior structures, but don't transmit dynamic mechanical signals that exist in the cell microenvironment *in vivo*

To better recapitulate the cell microenvironment *in vitro* the aim of this work is to develop a **4D microporous and electroactive scaffold as an innovative cell culture platform:**

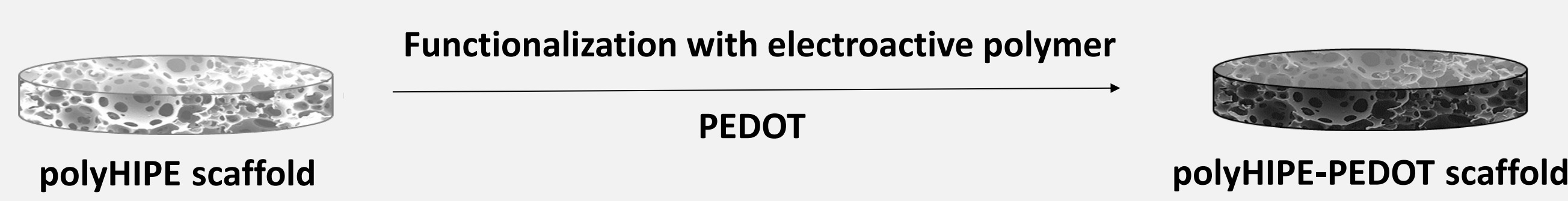
- In situ* electromechanical stimulation of cells
- Monitoring of the cell behavior



## Synthesis of polyHIPE-PEDOT scaffolds

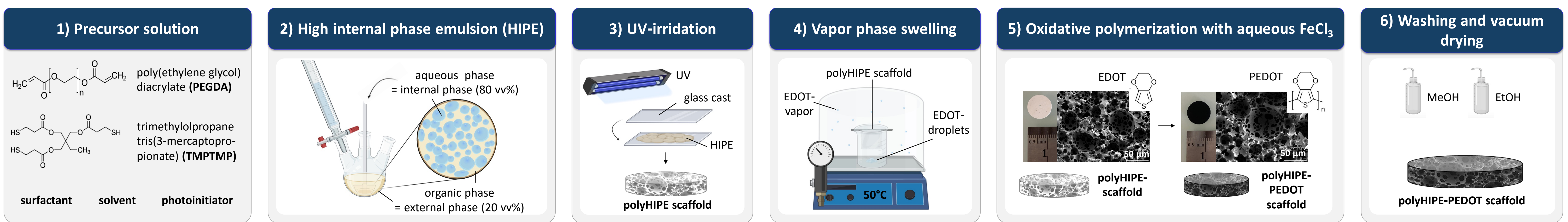
**Polymeric scaffold:**

- Highly microporous
- Interconnective



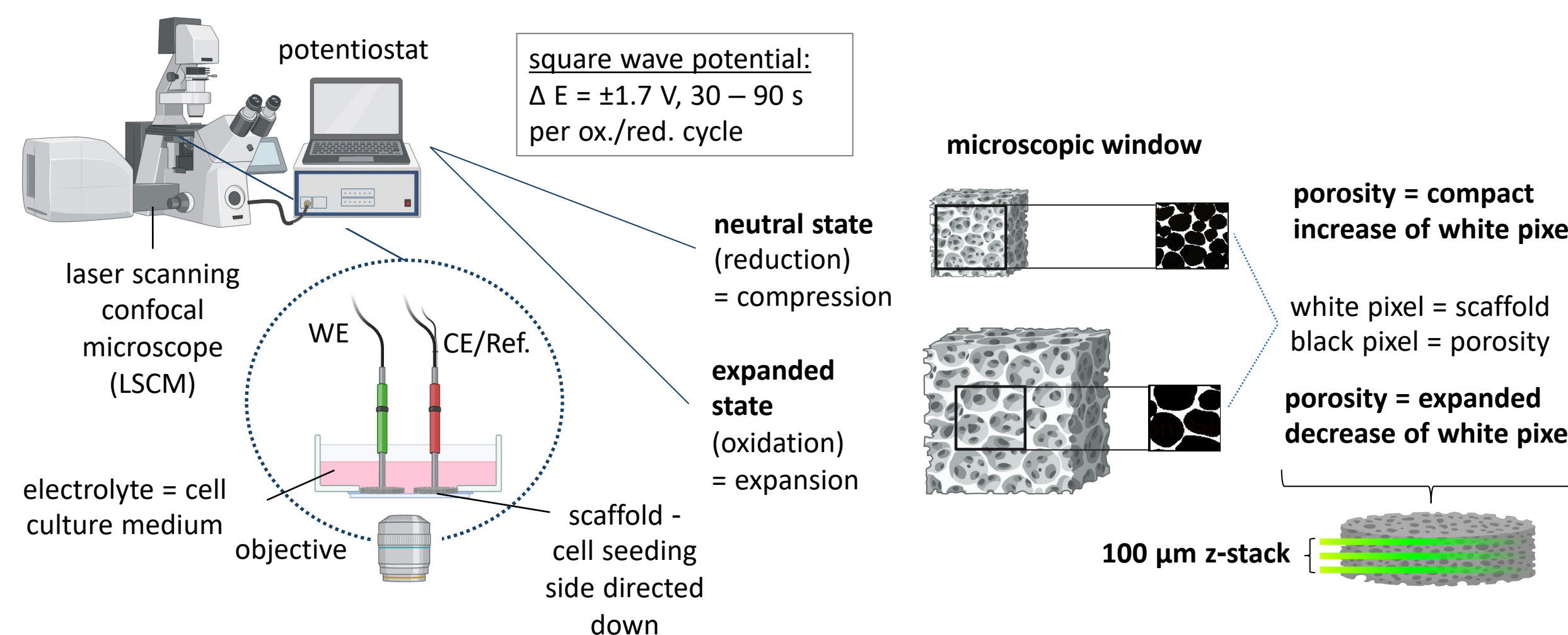
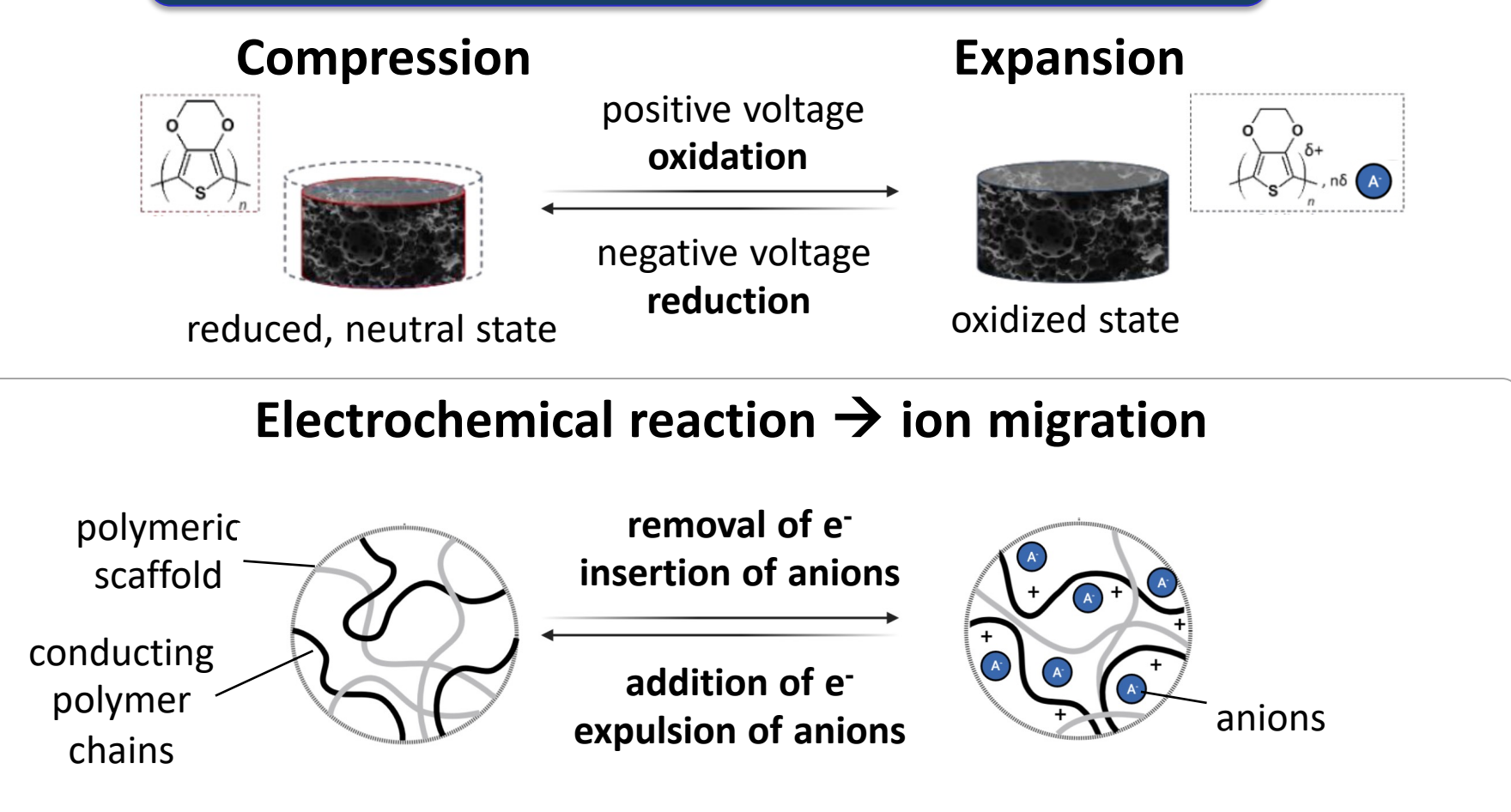
**Electroactive polymeric scaffold:**

- Preserved polyHIPE morphology

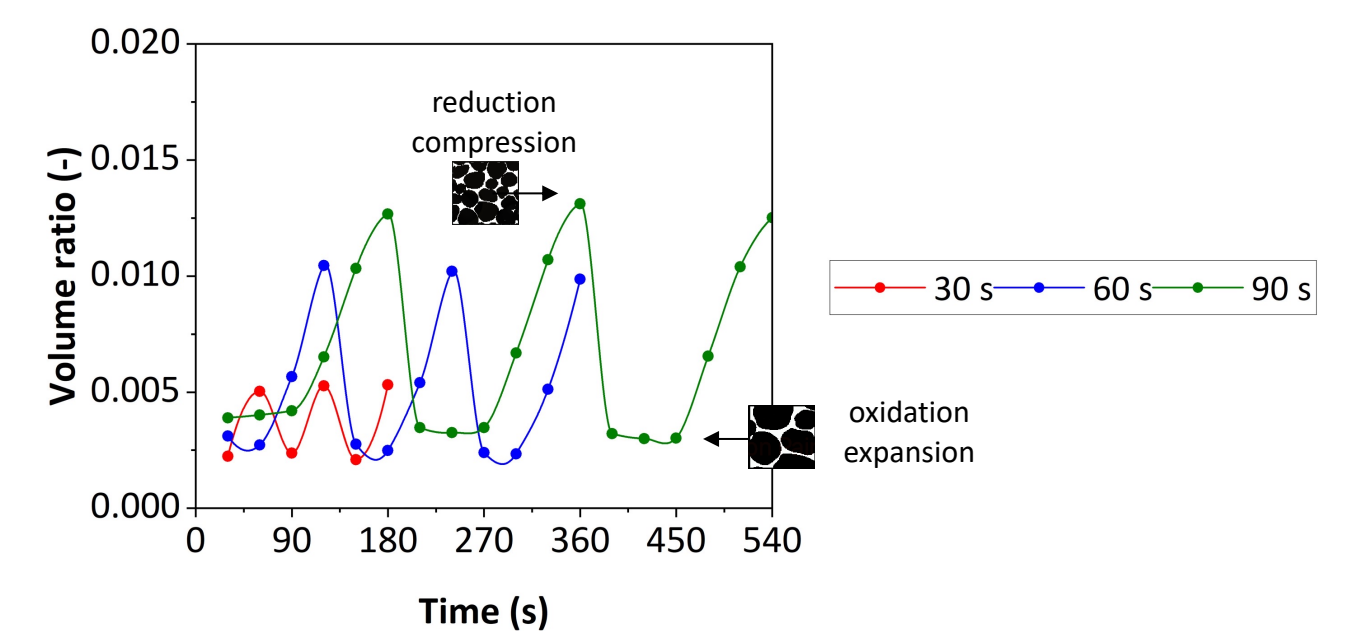


## Actuation behavior of polyHIPE-PEDOT scaffolds

### Mechanism



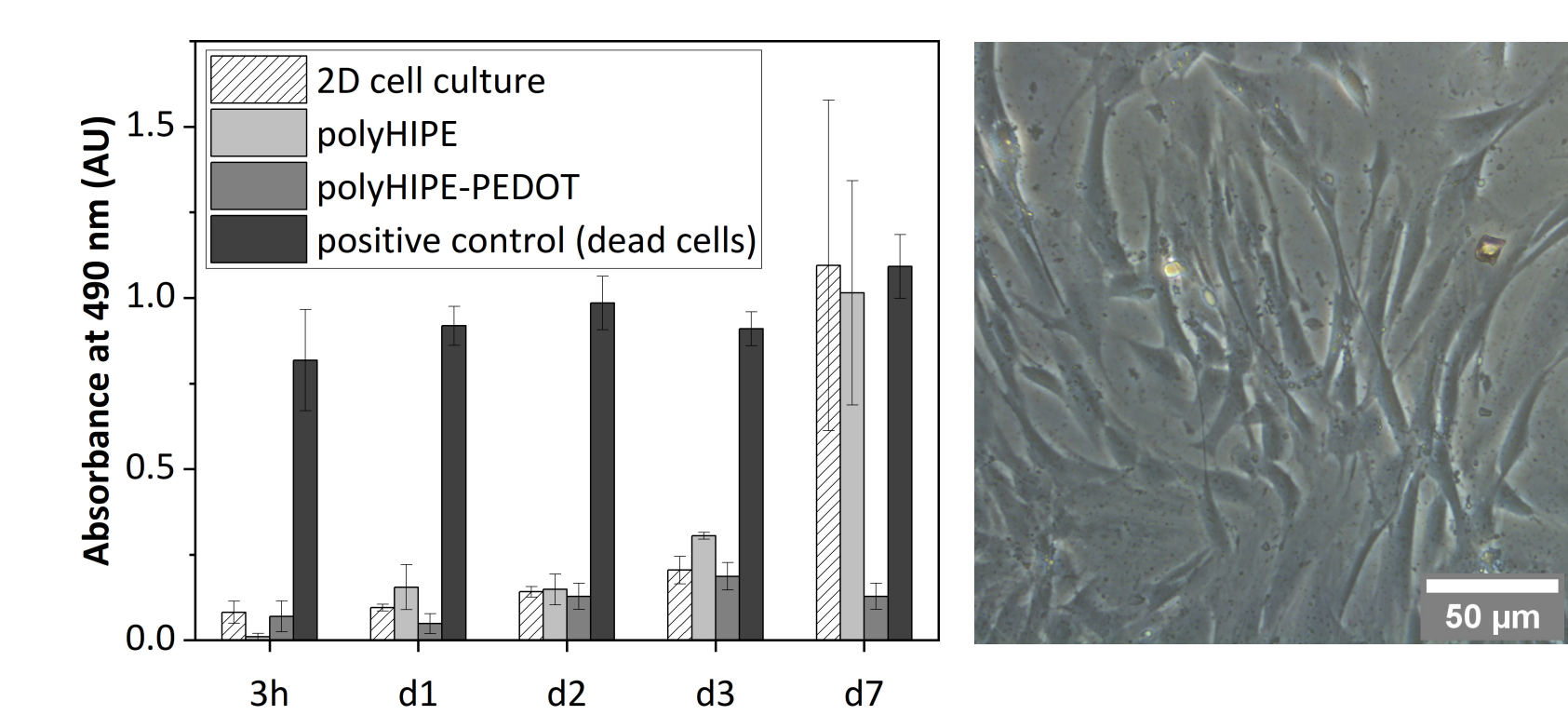
### Actuation response of polyHIPE-PEDOT scaffolds to electrochemical stimulation



- PolyHIPE-PEDOT scaffolds showed direct response to electrochemical stimulation
- Reduction/oxidation time determines actuation frequency and volumetric expansion

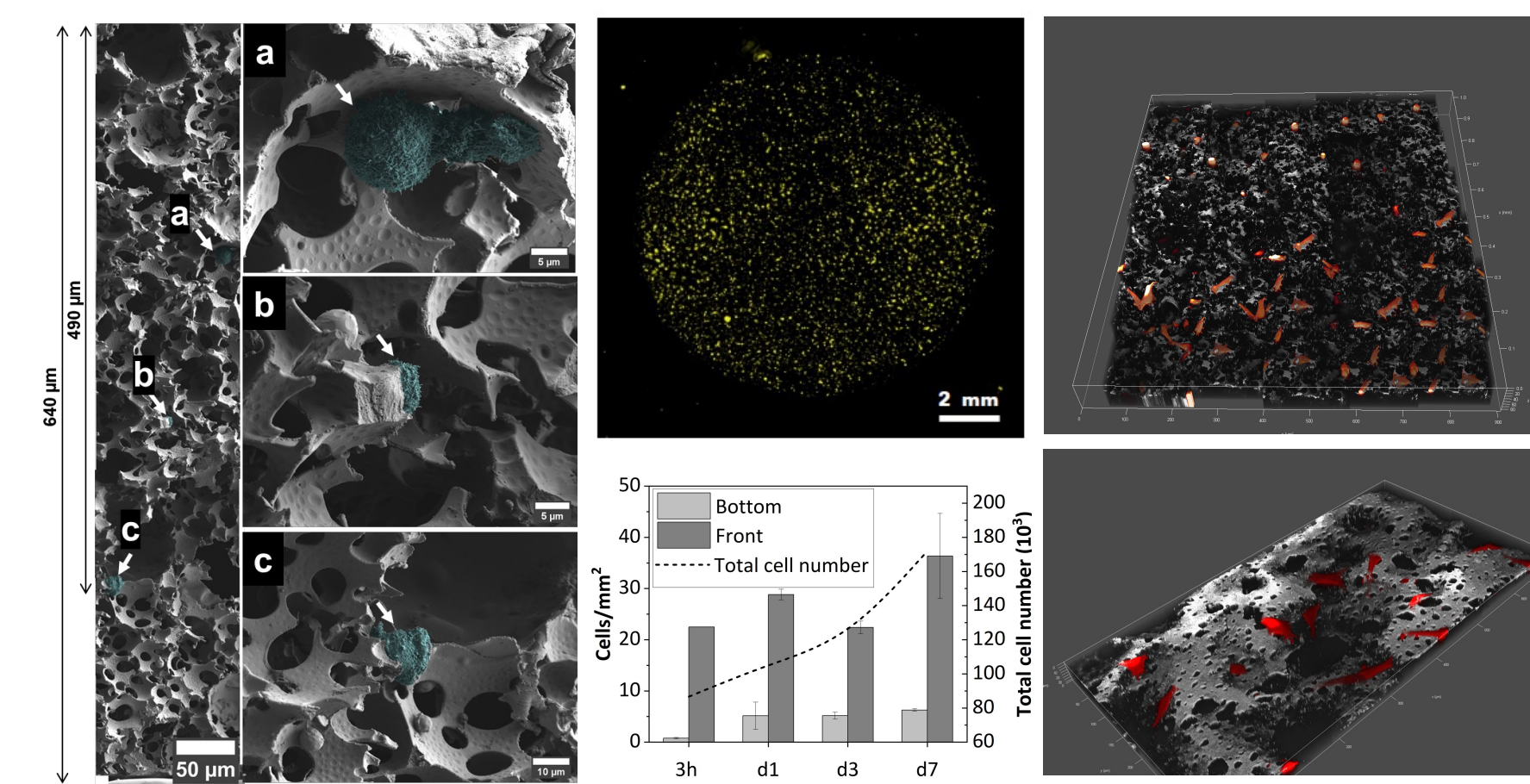
## Cytocompatibility

### Cytotoxicity via LDH-activity



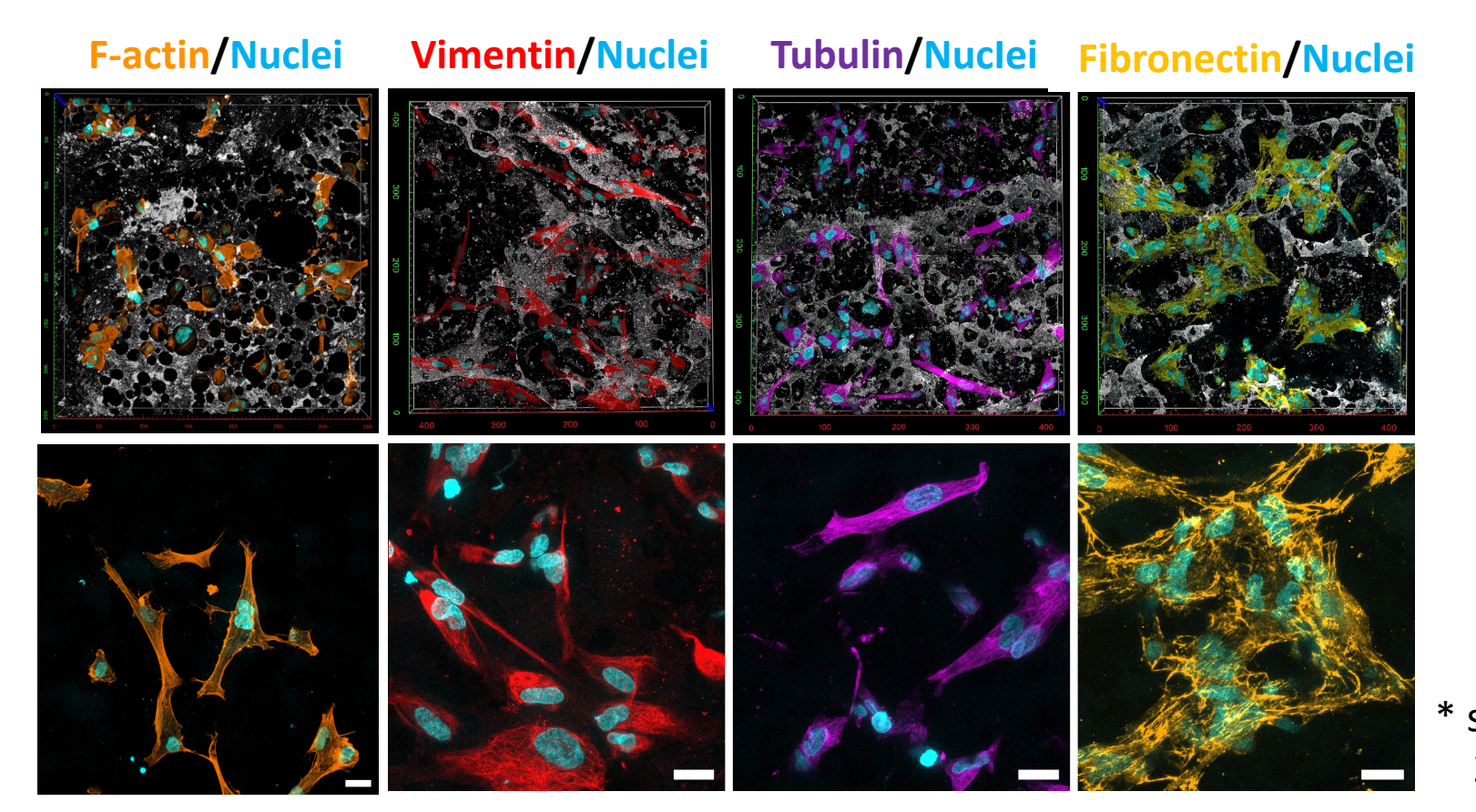
- PolyHIPE-PEDOT scaffolds showed no cytotoxic effect over time for human dermal fibroblasts

## Cell colonization



- PolyHIPE-PEDOT scaffolds allow cells to adhere, spread and migrate into the microporous structure

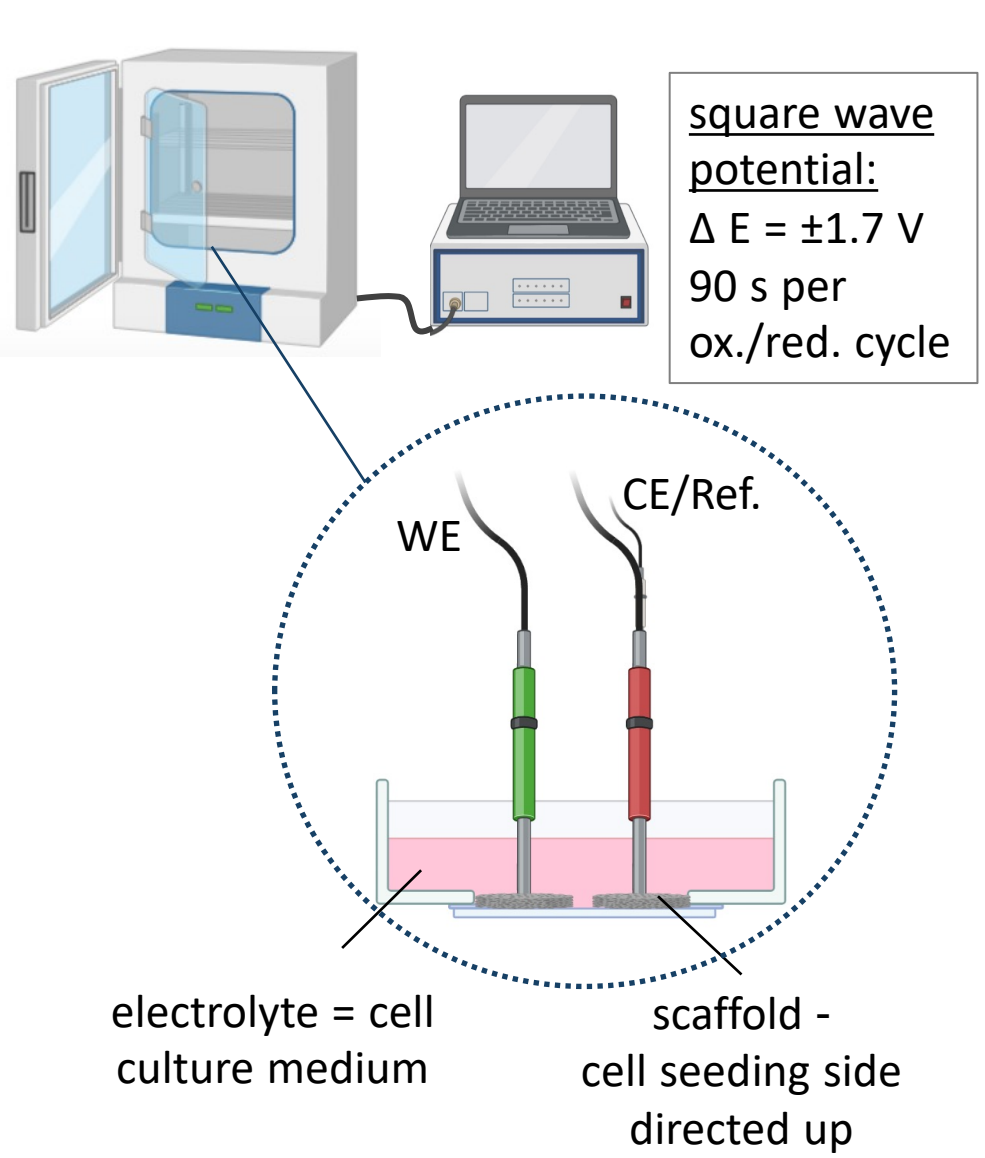
## Cell morphology and ECM



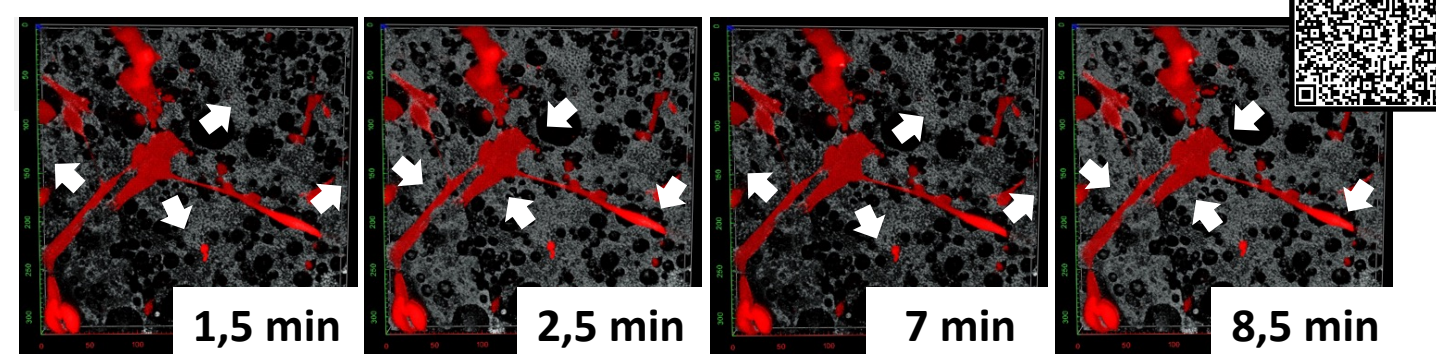
- Fibroblast cells show typical spindle shaped cell morphology on polyHIPE-PEDOT scaffolds and secrete and organize fibronectin

## Electromechanical stimulation *in vitro*

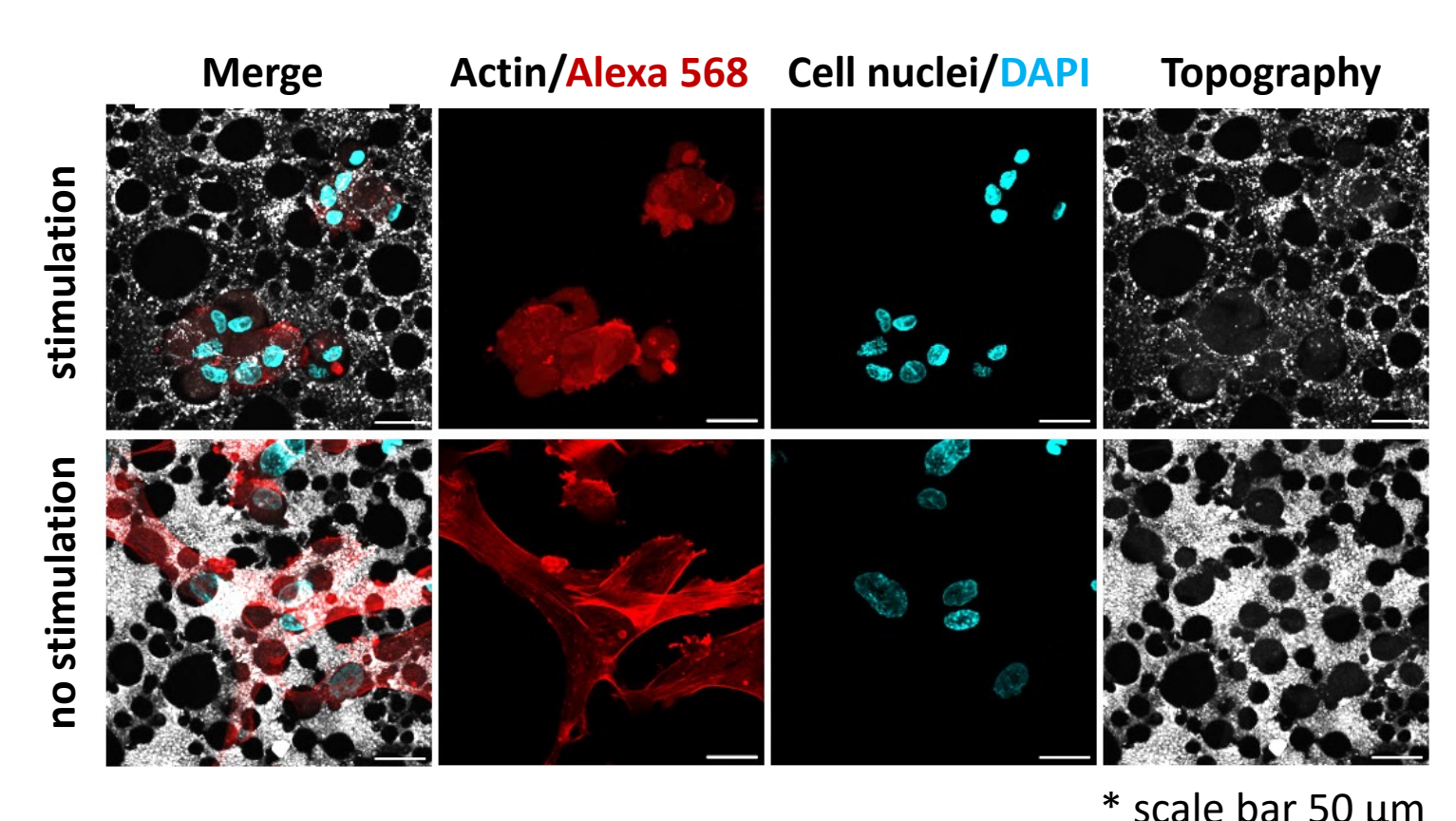
### Electromechanical stimulation setup



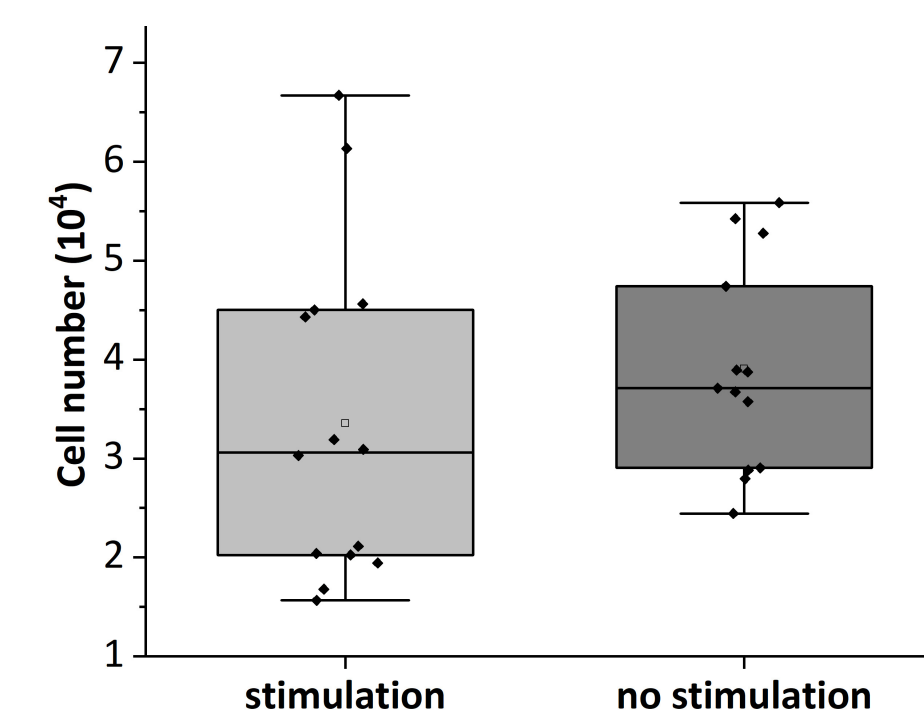
### In situ and real-time monitoring



### Cell behavior after 5h of electromechanical stimulation



### Cytotoxicity after 5h of electromechanical stimulation



- 5h of electromechanical stimulation had no cytotoxic effect on cells
- Stimulated human dermal fibroblasts showed membrane deformation and changes in their morphology

## Conclusion

- 4D microporous and electroactive scaffolds were successfully processed by the functionalization of a polyHIPE-scaffold with the conducting polymer PEDOT
- PolyHIPE-PEDOT scaffolds comply with the requirements of cell culture and allow cell adhesion, spreading and migration inside the microporous structure
- Typical 3D cell morphology and ECM production on polyHIPE-PEDOT scaffolds were found
- Electromechanical stimulation setup was designed and implemented for a CLSM and allowed the *in situ* and real-time monitoring of cells during stimulation
- 5h of electromechanical stimulation had no cytotoxic effect on human dermal fibroblasts
- Electromechanical stimulation leads to changed cell phenotype of human dermal fibroblasts, which remains to be explored

### References

A. Ferrández-Montero, B. Carlier, R. Agniel, J. Leroy-Dudal, C. Vancaeyzele and C. Plesse, 4D smart porous scaffolds based on the polyHIPE architecture and electroactive PEDOT, *J. Mater. Chem. C*, 2021, 9, 12388-12398

### Acknowledgments

Participation to this conference was partially supported by I-MAT federation (FD 4122), INEX-CY Initiative (3DSTIM-2019-054-C01A0) and RESPOR IDF (4D E-BIOCELL).

### Contact e-mail

franziska.hahn@cyu.fr