



**HAL**  
open science

## **ROX (Respiratory rate–OXYgenation) index to predict early response to high-flow nasal cannula therapy in infants with viral bronchiolitis**

Christophe Milesi, Erika Nogue, Julien Baleine, Lionel Moulis, Robin Pouyau, Arthur Gavotto, David Brossier, Guillaume Mortamet, Gilles Cambonie

### ► **To cite this version:**

Christophe Milesi, Erika Nogue, Julien Baleine, Lionel Moulis, Robin Pouyau, et al.. ROX (Respiratory rate–OXYgenation) index to predict early response to high-flow nasal cannula therapy in infants with viral bronchiolitis. *Pediatric Pulmonology*, In press, <10.1002/ppul.26860>. <hal-04396914>

**HAL Id: hal-04396914**

**<https://hal.science/hal-04396914v1>**

Submitted on 16 Jan 2024

HAL is a multi-disciplinary open access archive for the deposit and dissemination of scientific research documents, whether they are published or not. The documents may come from teaching and research institutions in France or abroad, or from public or private research centers.

L'archive ouverte pluridisciplinaire HAL, est destinée au dépôt et à la diffusion de documents scientifiques de niveau recherche, publiés ou non, émanant des établissements d'enseignement et de recherche français ou étrangers, des laboratoires publics ou privés.



HAL Authorization

# **ROX (Respiratory rate–Oxygenation) index to predict early response to high-flow nasal cannula therapy in infants with viral bronchiolitis**

Christophe Milesi MD1 | Erika Nogue2 | Julien Baleine MD1 | Lionel Moulis MD2 | Robin Pouyau PhD3 | Arthur Gavotto PhD1 | David Brosssier PhD4 | Guillaume Mortamet PhD5 | Gilles Cambonie MD, PhD1 | GFRUP Respiratory Study Group

1 Pediatric Intensive Care Unit, Arnaud de Villeneuve University Hospital, Montpellier, France

2 Clinical Research and Epidemiology Unit, CHU Montpellier, Univ Montpellier, Montpellier, France

3 Pediatric Intensive Care Unit, Woman- Mother-Child University Hospital, Lyon, France

4 Pediatric Intensive Care Unit, University Hospital Caen-Normandy, France

5 Pediatric Intensive Care Unit, Grenoble University Hospital, La Tronche, France

## **Correspondence**

Christophe Milesi, MD, Department of Neonatal Medicine and Pediatric Intensive Care, Arnaud de Villeneuve University Hospital, 371 Ave Doyen G Giraud, 34295 Montpellier Cedex 5, France.

## **Email:**

[c-milesi@chu-montpellier.fr](mailto:c-milesi@chu-montpellier.fr)

## **KEYWORDS**

bronchiolitis, failure, high-flow nasal cannula, infant, risk prediction

## **Abbreviations:**

AUC, area under the curve; AVB, acute viral bronchiolitis; CPAP, continuous positive airway pressure; EDIN, [Échelle de douleur et d'inconfort du nouveau-né]: neonatal pain and discomfort scale; FiO<sub>2</sub>, fraction of inspired oxygen; HFNC, high-flow nasal cannula; HR, heart rate; mWCAS, modified Wood's Clinical Asthma Score; p<sub>v</sub>CO<sub>2</sub>, partial pressure of carbon dioxide; ROX, respiratory rate-oxygenation index; ROX-HR, ROX-heart rate index; RR, respiratory rate.

The members of the GFRUP Respiratory Study Group are listed in the acknowledgments.

# Abstract

## Introduction:

High-flow nasal cannula (HFNC) is commonly used as first step respiratory support in infants with moderate-to-severe acute viral bronchiolitis (AVB). This device, however, fails to effectively manage respiratory distress in about a third of patients, and data are limited on determinants of patient response. The respiratory rate–oxygenation (ROX) index is a relevant tool to predict the risk for HFNC failure in adult patients with lower respiratory tract infections. The primary objective of this study was to assess the relationship between ROX indexes collected before and 1 h after HFNC initiation, and HFNC failure occurring in the following 48 h in infants with AVB.

## Method:

This is an ancillary study to the multicenter randomized controlled trial TRAMONTANE 2, that included 286 infants of less than 6 months with moderate to severe AVB. Collection of physiological variables at baseline (H0), and 1 h after HFNC (H1), included heart rate (HR), respiratory rate (RR), fraction of inspired oxygen (FiO<sub>2</sub>), respiratory distress score (modified Wood's Clinical Asthma Score [mWCAS]), and pain and discomfort scale (EDIN). ROX and ROX-HR were calculated as:

$$\frac{\left(\frac{\text{SpO}_2}{\text{FiO}_2}\right)}{\text{RR}} \text{ and } 100 \times \frac{\text{ROX}}{\text{HR}}$$

respectively. Predefined HFNC failure criteria included increase in respiratory distress score or RR, increase in discomfort, and severe apnea episodes. The accuracies of ROX, ROX-HR indexes and clinical variable to predict HFNC failure were assessed using receiver operating curve analysis. We analyzed predictive factors of HFNC failure using multivariate logistic regressions.

## Result:

HFNC failure occurred in 111 of 286 (39%) infants, and for 56 (50% of the failure) of them within the first 6 h. The area under the curve of ROX indexes at H0 and H1 were, respectively, 0.56 (95% confidence interval [CI] 0.48–0.63,  $p = 0.14$ ), 0.56 (95% CI 0.49–0.64,  $p = 0.09$ ). ROX-HR performances were better but remained poorly discriminant. HFNC failure was associated with higher mWCAS score at H1 ( $p < 0.01$ ) and lower decrease in EDIN scale during the first hour of HFNC delivery ( $p = 0.02$ ). In the multivariate analyses, age and mWCAS score were found to be independent factors associated with HFNC failure at H0. At H1, weight and mWCAS were associated factors.

## Conclusion:

In this study, neither ROX index, nor physiological variables usually collected in infants with AVB had early discriminatory capacity to predict HFNC failure.

# 1 | INTRODUCTION

Acute viral bronchiolitis (AVB) is a leading cause of lower respiratory tract infection and hospitalization in young infants, notably those aged less than 1 year.<sup>1</sup> Management of moderate-to-severe AVB is based on respiratory support, with as the first step administration of a heated and humidified mixture of air and oxygen with high-flow nasal cannula (HFNC).<sup>2</sup> While several studies have confirmed HFNC effectiveness to reduce the work of breathing in AVB,<sup>3–5</sup> failure occurs in 30%–40% of these patients.<sup>6–8</sup> In these infants, evolving respiratory failure requires escalation in therapeutic measures, including transition to continuous positive airway pressure (CPAP), then if necessary to noninvasive ventilation or intubation.<sup>9</sup>

Early identification of patients who are most likely to fail with HFNC is critical for care organization in the pediatric emergency department.<sup>10</sup> Indeed, these infants will need to be referred to a pediatric intensive care unit, necessary for the monitoring of any noninvasive ventilation technique including CPAP and bi-level positive airway pressure, while those who will improve with HFNC can potentially be transferred to a general pediatric ward.<sup>11</sup> Currently, some patient characteristics have been individualized as predictors of respiratory deterioration, notably younger age or initial severity.<sup>12,13</sup> However, neither isolated physiologic parameters, such as respiratory rate (RR), fraction of inspired oxygen (FiO<sub>2</sub>), or venous/capillary partial pressure of carbon dioxide (pvCO<sub>2</sub>), nor clinical scales that incorporate different vital signs have demonstrated a consistent association with the risk of HFNC failure and are discriminating enough to be used as triage tools.<sup>14–18</sup>

Recently, Roca et al. developed a tool to assess the risk for HFNC failure in adult patients with hypoxemic acute respiratory failure.<sup>19</sup> ROX (Respiratory rate–Oxygenation) index corresponds to the ratio of patient oxygenation, which has been associated to HFNC success, over RR, which has been associated to HFNC failure. Subsequent studies confirmed it was a good predictor of HFNC failure in lower respiratory tract infections, including those caused by virus.<sup>20,21</sup> In pediatric patients with acute respiratory failure, ROX index application 24 and 48 h after hospital admission also appeared a good marker for predicting the risk of HFNC failure.<sup>22</sup> In the specific context of AVB in <2 years infants managed in a pediatric emergency department, patients with ROX index in the lowest quartile at HFNC initiation were three times more likely to require CPAP compared to those in the highest quartile.<sup>23</sup> The single center nature of this study, with lack of standardization for failure criteria, incited to test the relevance of ROX index in an homogeneous population of <6 months infants requiring HFNC for severe AVB, recruited in the framework of a multicenter study with predefined HFNC failure criteria.<sup>24</sup> ROX-HR index is defined as the ratio of ROX index over HR (beats/min), multiplied by a factor of 100. This index could be a useful tool for early prediction of HFNC outcomes.<sup>25</sup>

The primary objective of this study was to assess the relationship between ROX index collected early (i.e., before HFNC initiation and 1 h after), and HFNC failure occurring in the following 48 h in patients admitted for severe AVB.

## 2 | METHODS

This is an ancillary study to the multicenter randomized controlled trial TRAMONTANE 2, which compared two settings (2 vs. 3 L/kg/ min), in young infants with severe AVB (defined by a modified Wood's Clinical Asthma Score [mWCAS] >3) supported with HFNC.<sup>24</sup> The study protocol was approved by the South Mediterranean IV Ethics Committee (2016-A00900-51), and recorded on the National Library of Medicine registry (NCT02824744). Written authorization was obtained from the two parents.

The study, performed in 16 French university hospital centers between November 2016 and March 2017, enrolled 142 infants in the 2 L/min/kg group, 144 infants in 3 L/min/kg group, and found the same failure rate of 39% in each group, allowing to include the 286 TRAMONTANE 2 patients in the current analysis.

### 2.1 | Data collection

Heart rate (HR), RR, FiO<sub>2</sub>, venous/capillary pH and pvCO<sub>2</sub>, mWCAS, and the neonatal pain and discomfort scale (EDIN) were collected at baseline (H<sub>0</sub>), in the 15 min following admission, while the infant received a blend of air/oxygen using nasal cannula at a maximal flow rate of 1 L/min. The same physiological variables, except for capillary blood gas analysis, were collected 1 h after HFNC initiation at the flow rate allocated by randomization (H<sub>1</sub>).

At H<sub>0</sub> and H<sub>1</sub>, ROX and ROX-HR were calculated as

$$\frac{\left(\frac{SpO_2}{FiO_2}\right)}{RR} \quad \text{and} \quad 100 \times \frac{ROX}{HR}, \quad \text{respectively,}$$

Predefined HFNC failure criteria included the occurrence, within 48 h of randomization, of one or more of the following: increase, compared to H<sub>0</sub>, in respiratory distress score (i.e., 1 point in mWCAS) or RR (i.e., >10 breath per min with RR >60 bpm), increase in discomfort (1 point in EDIN score), and severe apnea episodes requiring bag and mask ventilation.

### 2.2 | Outcome

The primary study outcome was discriminatory capacity of ROX and ROX-HR index values, at H<sub>0</sub> and H<sub>1</sub>, and their change during the first hour of HFNC delivery (H<sub>1</sub> – H<sub>0</sub>), to predict HFNC failure.

We also tested, as secondary outcomes, the physiological variables collected at H<sub>0</sub> and H<sub>1</sub> and their changes between the two time points. We also analyzed predictive factors of HFNC failure among sociodemographic and clinical data.

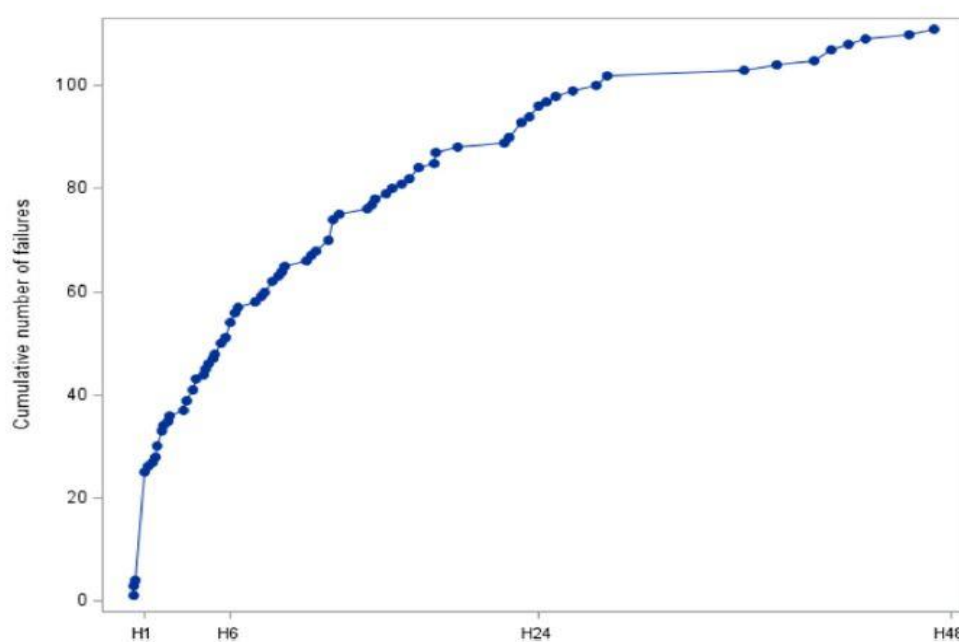
## 2.3 | Statistical analyses

Patients' characteristics were presented using median and interquartile range for quantitative variables and frequencies with proportions for categorical ones.

Groups, defined as HFNC failure or success, were compared using Student or Wilcoxon Mann–Whitney test for continuous variables and Chi-square or Fisher test for categorical ones.

The accuracies of ROX index, ROX-HR index, and physiological variables to predict HFNC failure were assessed using receiver operating curve analyses. The area under the curve (AUC) was calculated by the Hanley method and compared to the 0.5 value using Wilcoxon's W statistic. For the analyses at H1 and for changes during the first hour of HFNC delivery, all HFNC failure patients at H1 or before were excluded. To analyze risk factors of HFNC failure, we used a multivariate logistic regression. A backward model selection of Akaike's information criterion was implemented on variable with a  $p < 0.20$  in univariate regression. A model was performed at H0 and another at H1.

All statistical tests were two-tailed with an alpha set at 0.05. Statistical analyses were conducted with SAS (version 9.04; SAS Institute) and R software (R 4.3.1).



**FIGURE 1** Cumulative number of failures according to time in infants with acute viral bronchiolitis included in the TRAMONTANE 2 trial. At H1, H6, H24, and H48 the number of failure was 25, 54, 96, and 111, respectively. [Color figure can be viewed at [wileyonlinelibrary.com](http://wileyonlinelibrary.com)]

## 3 | RESULTS

HFNC failure occurred in 111 of 286 (39%) infants, after a median time (Q25–Q75) of 6.25 (1.67–17.00) hours (Figure 1). In 96 of 111 (86%), failure occurred within 24 h, including 56 (50%) within the first 6 h.

**TABLE 1** Characteristics of the study population, ROX index, and physiological variables at baseline (H0) and 1 h after HFNC initiation (H1) and comparison between groups.

|                                       | Total population<br>(N = 286) | HFNC success<br>(N = 175)    | HFNC failure<br>(N = 111)   | p Value |
|---------------------------------------|-------------------------------|------------------------------|-----------------------------|---------|
| <b>Study population</b>               |                               |                              |                             |         |
| Male (%)                              | 170 (59.4)                    | 100 (57.1)                   | 70 (63.1)                   | 0.32    |
| Age, days                             | 43 (21; 71)                   | 50 (26; 71)                  | 33 (16; 64)                 | <0.01   |
| Weight, g                             | 4285 (3575; 5240)             | 4520 (3575; 5300)            | 4010 (3500; 4920)           | 0.09    |
| Born preterm (%)                      | 42 (15)                       | 27 (15)                      | 15 (14)                     | 0.66    |
| <b>Baseline (H0)</b>                  |                               |                              |                             |         |
| ROX                                   | N = 250<br>6.46 (4.17; 8.16)  | N = 158<br>6.53 (4.57; 8.21) | N = 92<br>5.91 (3.85; 7.89) | 0.14    |
| ROX-HR                                | N = 250<br>3.90 (2.68; 5.09)  | N = 158<br>4.03 (2.76; 5.28) | N = 92<br>3.72 (2.31; 5.04) | 0.15    |
| mWCAS                                 | N = 286<br>4 (3.5; 5)         | N = 175<br>4 (3.5; 5)        | N = 111<br>4.50 (3.5; 5.5)  | 0.05    |
| EDIN                                  | N = 279<br>5 (3; 7)           | N = 173<br>5 (3; 7)          | N = 106<br>4 (3; 8)         | 0.60    |
| pH                                    | N = 231<br>7.3 (7.2; 7.3)     | N = 143<br>7.3 (7.2; 7.3)    | N = 88<br>7.3 (7.2; 7.3)    | 0.46    |
| RR, bpm                               | N = 286<br>57 (47; 68)        | N = 175<br>56 (47; 67)       | N = 111<br>60 (46; 70)      | 0.42    |
| HR, bpm                               | N = 286<br>160 (148; 175)     | N = 175<br>160 (148; 173)    | N = 111<br>162 (149; 180)   | 0.35    |
| FiO <sub>2</sub> , %                  | N = 250<br>28 (22; 38)        | N = 158<br>26 (21; 35)       | N = 92<br>30 (25; 40)       | 0.07    |
| PCO <sub>2</sub> , mmHg               | N = 234<br>58 (50; 68)        | N = 145<br>58 (50; 65)       | N = 89<br>59 (50; 69)       | 0.28    |
| SpO <sub>2</sub>                      | N = 286<br>97 (94; 99)        | N = 175<br>97 (94; 99)       | N = 111<br>96 (94; 99)      | 0.25    |
| <b>1 h after HFNC initiation (H1)</b> |                               |                              |                             |         |
| ROX                                   | N = 261<br>6.87 (5.23; 8.8)   | N = 175<br>7.18 (5.52; 8.89) | N = 86<br>6.39 (5.09; 8.25) | 0.09    |
| ROX-HR                                | N = 261<br>4.49 (3.40; 5.84)  | N = 175<br>4.60 (3.63; 5.92) | N = 86<br>4.07 (3.17; 5.41) | 0.03    |
| mWCAS                                 | N = 258<br>3.5 (3-4)          | N = 175<br>3 (2.5; 4)        | N = 83<br>4 (3; 5)          | <0.01   |
| EDIN                                  | N = 256<br>3 (1; 5)           | N = 173<br>3 (1; 4)          | N = 83<br>3 (1; 5)          | 0.30    |
| RR, bpm                               | N = 261<br>50 (40; 60)        | N = 175<br>50 (40; 58)       | N = 86<br>54 (40; 62)       | 0.05    |
| HR, bpm                               | N = 261<br>155 (142; 165)     | N = 175<br>150 (140; 165)    | N = 86<br>160 (147; 170)    | 0.03    |

**TABLE 1** (Continued)

|   | Total population<br>(N = 286) | HFNC success<br>(N = 175)     | HFNC failure<br>(N = 111)    | p Value |
|---|-------------------------------|-------------------------------|------------------------------|---------|
| FIO <sub>2</sub> , %                                    | N = 261<br>29 (25; 30)        | N = 175<br>28 (23; 30)        | N = 86<br>30 (25; 32)        | 0.28    |
| Sat   | N = 261<br>97 (95; 99)        | N = 175<br>97 (95; 99)        | N = 86<br>97 (95; 99)        | 0.62    |
| Change during the first hour of HFNC delivery (H1 – H0) |                               |                               |                              |         |
| ROX   | N = 230<br>0.70 (-0.52; 2.45) | N = 158<br>0.88 (-0.46; 2.53) | N = 72<br>0.54 (-1.16; 2.31) | 0.34    |
| mWCAS (±SD)   | N = 258<br>-1 (-1.50; 0)      | N = 175<br>-1 (-1.50; -0.50)  | N = 83<br>-0.50 (-1; 0)      | 0.07    |
| EDIN  | N = 252<br>-1 (-3; 0)         | N = 171<br>-2 (-3; 0)         | N = 81<br>-1 (-3; 0)         | 0.02    |
| RR, bpm   | N = 261<br>-5 (-15; 2)        | N = 175<br>-7 (-15; 2)        | N = 86<br>-4.50 (-15; 2)     | 0.31    |
| HR, bpm   | N = 261<br>-5 (-16; 5)        | N = 175<br>-5 (-19; 4)        | N = 86<br>-4 (-15; 7)        | 0.17    |
| FIO <sub>2</sub> , %                                    | N = 247<br>0 (-6; 4)          | N = 158<br>0 (-5; 4)          | N = 89<br>0 (-9; 5)          | 0.94    |

Note: Quantitative variables were presented using median (Q<sub>25</sub>–Q<sub>75</sub>) and numbers (%) for categorical ones.

Abbreviations: BPD, bronchopulmonary dysplasia; EDIN, neonatal pain and discomfort scale; HR, heart rate; mWCAS, modified Wood's Clinical Asthma Score; ROX, Respiratory rate–Oxygenation index; RR, respiratory rate.

### 3.1 | Primary outcome

ROX and ROX-HR indexes at H0 and H1, and their changes during the first hour were not different according to HFNC failure or success (Table 1). Their respective AUC were presented in in Table 2. These results did not support that early ROX indexes predicted HFNC failure. Only the ROX-HR at H1 appeared significantly associated with HFNC failure but the performance associated were poorly (Figure 2).

### 3.2 | Secondary outcome

In univariate regression, HFNC failure was associated with higher mWCAS score at H1 ( $p < 0.01$ ) and lower decrease in EDIN scale during the first hour of HFNC delivery ( $p = 0.02$ ) (Table 1). However, none of the physiological variables collected at H0 and H1 and their changes during the first hour of HFNC delivery were predictive of HFNC failure, according to their respective AUC (Table 2). In the multivariate analysis at H0, age was identified as a protective factors against HFNC failure, whereas mWCAS score was found to be a risk factor (Table 3). At H1, weight was found to be protective against HFNC failure, while mWCAS at H1 and EDIN change were retained in the model as potential risk factors (with EDIN change being nonsignificant).

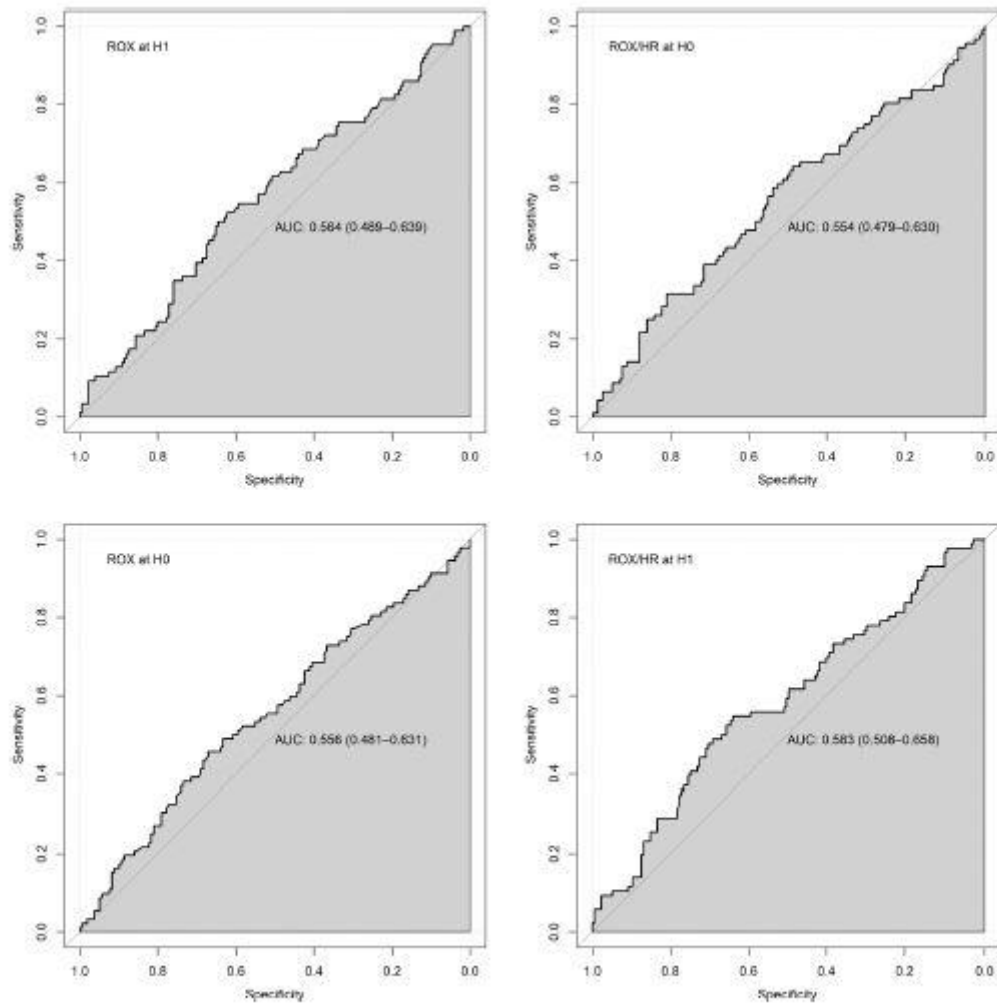


FIGURE 2 Receiver operating curve curves for  $ROX^{H0}$ ,  $ROX^{H0}/HR$ ,  $ROX^{H1}$ , and  $ROX^{H1}/HR$  and area under the curve (AUC) with 95% confidence interval.

TABLE 3 Univariate and multivariate models.

|                                | n   | cOR              | p Value | H0 model           |         | H1 model         |         |
|--------------------------------|-----|------------------|---------|--------------------|---------|------------------|---------|
|                                |     |                  |         | aOR                | p Value | aOR              | p Value |
| Age                            | 286 | 0.96 [0.91-1.01] | 0.09    | 0.952 [0.906-1.00] | 0.05    |                  |         |
| Weight                         | 286 | 0.84 [0.68-1.04] | 0.11    |                    |         | 0.73 [0.56-0.96] | 0.02    |
| <b>H0</b>                      |     |                  |         |                    |         |                  |         |
| mWCAS <sup>H0</sup>            | 286 | 1.31 [1.05-1.63] | 0.02    | 1.34 [1.07-1.68]   | 0.01    |                  |         |
| FIO <sub>2</sub> <sup>H0</sup> | 250 | 1.14 [0.94-1.38] | 0.19    |                    |         |                  |         |
| <b>H1 et DELTA</b>             |     |                  |         |                    |         |                  |         |
| ROX <sup>H0</sup>              | 261 | 0.47 [0.19-1.16] | 0.10    |                    |         |                  |         |
| ROX-HR <sup>H1</sup>           | 261 | 0.25 [0.07-0.91] | 0.03    |                    |         |                  |         |
| mWCAS <sup>H0</sup>            | 258 | 1.63 [1.29-2.07] | <0.01   |                    |         | 1.60 [1.25-2.05] | 0.02    |
| RR <sup>H1+</sup>              | 261 | 1.24 [1.03-1.49] | 0.02    |                    |         |                  |         |
| HR <sup>H1</sup>               | 261 | 1.17 [1.02-1.34] | 0.02    |                    |         |                  |         |
| ΔEDIN                          | 252 | 1.13 [1.00-1.28] | 0.05    |                    |         | 1.10 [0.97-1.26] | 0.14    |
| ΔHR                            | 261 | 1.01 [1.00-1.03] | 0.08    |                    |         |                  |         |
| ΔmWCAS                         | 258 | 1.40 [1.06-1.86] | 0.02    |                    |         |                  |         |

Abbreviations: aOR, adjusted odds ratio; cOR, crude odds ratio.

## 4 | DISCUSSION

In this multicenter population of young infants with severe AVB, the failure rate of HFNC was 39%. Failure of this first step of respiratory support occurred early, within 6 h after HFNC initiation for half of failing patients and within 24 h for nearly 90% of them. Neither ROX, ROX-HR index, nor physiological variables usually collected in infants with acute respiratory failure had early discriminatory capacity to predict failure of management with HFNC.

In a previous study, Kannikeswaran et al. observed an association between ROX index and HFNC failure, in other words the need for positive pressure ventilation, in <2 years infant with bronchiolitis.<sup>23</sup> This result was particularly relevant from the perspective of directing these patients to the most suitable units downstream of the emergency department. In this perspective, our study aimed to identify a threshold for this index, associated with actual predictive capacities. Our AUC results suggested a weak and nonsignificant relationship between ROX or ROX-HR and HFNC failure, which currently does not confirm the interest of this tool in a clinical decision rule. The main difference with studies suggesting that ROX index may be a good marker to predict the risk of HFNC failure probably comes from different patient's characteristics.<sup>22,23</sup> Our trial involved much younger patients and, as our results indicate, age is a key risk factor for respiratory failure in this population.<sup>12,13</sup> In addition, the TRAMONTANE 2 study included patients probably affected by more severe forms of the disease, as mWCAS  $\geq 3$  was required to be eligible, which signals unambiguous respiratory distress. In Kannikeswaran et al. study, the regression model to estimate the odds ratio of PPV requirement was based on the highest ROX quartile, suggesting marked heterogeneity in the severity of bronchiolitis.<sup>23</sup>

The ROX index takes into account only two characteristics of a respiratory distress, namely oxygenation and tachypnea, plus HR for the ROX-HR. While these parameters are critical in patients with acute hypoxemic respiratory failure, they do not take into account all of the determinants of HFNC failure in AVB. Indeed, AVB present different phenotypes: sometimes as a restrictive parenchymal disease, but a majority of these infants demonstrate a severe obstructive lung disease, with markedly increased work of breathing and frequent apneas.<sup>4,5,26</sup> These two elements, as well as comfort, are not integrated in the ROX index, whereas they often intervene in the clinician's decision to upgrade respiratory support in a patient with AVB.

No variable, observed or calculated, was able to predict HFNC failure in this work. However, half of failure occurred within 6 h, which suggests that such delay may be a relevant criterion for triage. Insofar as the volume of patients in the emergency room allows it, it may be consistent to maintain the infant with HFNC and adapted monitoring during this timeframe before deciding admission to pediatric intensive care unit.

This study has several strengths, including a large, multicentric and homogeneous population, in terms of severity and age, of infants with AVB. In addition, predefined HFNC failure criteria had been validated by a panel of experts providing from the 16 participating centers in the trial.

We acknowledge some limitations. Half of the children received a flow rate of 2 L/min/kg, and the other half 3 L/min/kg, but we are uncertain whether this affects the interpretation of our results because the failure rate was comparable between groups: 38.7% (2 L/min/kg) vs. 38.9% (3 L/kg/min;  $p = 0.98$ ). Some data points for the ROX index at baseline and 1 h after HFNC initiation are missing.

The predictive value of the ROX index beyond the first hour of HFNC delivery could have been evaluated, but it seemed more obvious that the relevance of an urgent triage tool can hardly exceed 1–2h.

## 5 | CONCLUSION

In this population of patient with severe AVB supported with HFNC, half of failures occurred within the first 6 h. Use of ROX or ROX-HR index before or 1 h after delivery of this support was not able to predict this event.

### AUTHOR CONTRIBUTIONS

Christophe Milesi: Conceptualization; methodology; investigation; writing—original draft. Erika Nogue: Conceptualization; methodology; software. Julien Baleine: Conceptualization; funding acquisition. Lionel Moulis: Conceptualization; methodology; software. Robin Pouyau: Conceptualization; methodology. Arthur Gavotto: Conceptualization; methodology. David Brossier: Conceptualization; methodology. Guillaume Mortamet: Conceptualization; methodology. Gilles Cambonie: Conceptualization; methodology; writing—original draft.

### ACKNOWLEDGMENTS

We want to thank the members of the GFRUP ventilation section: Anne Florence Pierre; Anna Deho; Jean Michel Liet; Camille Guillot; Anne-Sophie Guilbert; Jerome Rambaud; Astrid Millet; Mickael Afaneti; Julie Guichoux; Mathieu Genuini; Thierry Mansir; Jean Bergounioux; Fabrice Michel; Marie-Odile Marcoux; Sabine Durand; Philippe Durand; Stéphane Dager; Etienne Javouhey; Stéphane Leteurtre; Olivier Brissaud; Sylvain Renolleau, Aurélie Portefaix; Aymeric Douillard.

### CONFLICT OF INTEREST STATEMENT

The authors declare no conflict of interest.

### DATA AVAILABILITY STATEMENT

The data that support the findings of this study are available from the corresponding author upon reasonable request.

### Funding information

None

## REFERENCES

1. Mahant S, Parkin PC, Thavam T, et al. Rates in bronchiolitis hospitalization, intensive care unit use, mortality, and costs from 2004 to 2018. *JAMA Pediatr.* 2022;176(3):270-279. doi:10.1001/jamapediatrics.2021.5177
2. Milési C, Baudin F, Durand P, et al. Clinical practice guidelines: management of severe bronchiolitis in infants under 12 months old admitted to a pediatric critical care unit. *Intensive Care Med.* 2023;49(1):5-25. doi:10.1007/s00134-022-06918-4
3. Milési C, Baleine J, Matecki S, et al. Is treatment with a high flow nasal cannula effective in acute viral bronchiolitis? A physiologic study. *Intensive Care Med.* 2013;39(6):1088-1094. doi:10.1007/s00134-013-2879-y

4. Pham TMT, O'Malley L, Mayfield S, Martin S, Schibler A. The effect of high flow nasal cannula therapy on the work of breathing in infants with bronchiolitis. *Pediatr Pulmonol.* 2015;50(7):713-720. doi:10.1002/ppul.23060
5. Weiler T, Kamerkar A, Hotz J, Ross PA, Newth CJL, Khemani RG. The relationship between high flow nasal cannula flow rate and effort of breathing in children. *J Pediatr.* 2017;189:66-71. doi:10.1016/j.jpeds.2017.06.006
6. Kepreotes E, Whitehead B, Attia J, et al. High-flow warm humidified oxygen versus standard low-flow nasal cannula oxygen for moderate bronchiolitis (HFWHO RCT): an open, phase 4, randomised controlled trial. *Lancet.* 2017;389(10072):930-939. doi:10.1016/S0140-6736(17)30061-2
7. Milési C, Essouri S, Pouyau R, et al. High flow nasal cannula (HFNC) versus nasal continuous positive airway pressure (nCPAP) for the initial respiratory management of acute viral bronchiolitis in young infants: a multicenter randomized controlled trial (TRAMONTANE study). *Intensive Care Med.* 2017;43(2):209-216. doi:10.1007/s00134-016-4617-8
8. Franklin D, Babl FE, Schlapbach LJ, et al. A randomized trial of highflow oxygen therapy in infants with bronchiolitis. *N Engl J Med.* 2018;378(12):1121-1131. doi:10.1056/NEJMoa1714855
9. Delacroix E, Millet A, Pin I, Mortamet G. Use of bilevel positive pressure ventilation in patients with bronchiolitis. *Pediatr Pulmonol.* 2020;55(11):3134-3138. doi:10.1002/ppul.25033
10. Lavilledieu D, Abassi H, Mercier G, et al. Implementation of an organizational infrastructure paediatric plan adapted to bronchiolitis epidemics. *J Infect Public Health.* 2020;13(2):167-172. doi:10.1016/j.jiph.2019.07.007
11. Franklin D, Fraser JF, Schibler A. Respiratory support for infants with bronchiolitis, a narrative review of the literature. *Paediatr Respir Rev.* 2019;30:16-24. doi:10.1016/j.prrv.2018.10.001
12. Mansbach JM, Piedra PA, Stevenson MD, et al. Prospective multicenter study of children with bronchiolitis requiring mechanical ventilation. *Pediatrics.* 2012;130(3):e492-e500. doi:10.1542/peds.2012-0444
13. Dadlez NM, Esteban-Cruciani N, Khan A, Douglas LC, Shi Y, Southern WN. Risk factors for respiratory decompensation among healthy infants with bronchiolitis. *Hosp Pediatr.* 2017;7(9):530-535. doi:10.1542/hpeds.2017-0034
14. Kelly GS, Simon HK, Sturm JJ. High-flow nasal cannula use in children with respiratory distress in the emergency department: predicting the need for subsequent intubation. *Pediatr Emerg Care.* 2013;29(8):888-892. doi:10.1097/PEC.0b013e31829e7f2f
15. Betters KA, Gillespie SE, Miller J, Kotzbauer D, Hebbbar KB. High flow nasal cannula use outside of the ICU; factors associated with failure. *Pediatr Pulmonol.* 2017;52(6):806-812. doi:10.1002/ppul.23626
16. Er A, Çağlar A, Akgül F, et al. Early predictors of unresponsiveness to high-flow nasal cannula therapy in a pediatric emergency department. *Pediatr Pulmonol.* 2018;53(6):809-815. doi:10.1002/ppul.23981
17. De Santis D, Sheriff F, Bester D, Shahab R, Hutzal C. Uses of highflow nasal cannula on the community paediatric ward and risk factors for deterioration. *Paediatr Child Health.* 2020;25(2):102-106. doi:10.1093/pch/pxy123

18. Suessman A, Gray LL, Cavanaugh S, Camp EA, Shi Y, Meskill SD. Clinical factors associated with intubation in the high flow nasal cannula era. *Am J Emerg Med.* 2020;38(12):2500-2505. doi:10.1016/j.ajem.2019.12.017
19. Roca O, Messika J, Caralt B, et al. Predicting success of high-flow nasal cannula in pneumonia patients with hypoxemic respiratory failure: the utility of the ROX index. *J Crit Care.* 2016;35:200-205. doi:10.1016/j.jcrc.2016.05.022
20. Roca O, Caralt B, Messika J, et al. An index combining respiratory rate and oxygenation to predict outcome of nasal high-flow therapy. *Am J Respir Crit Care Med.* 2019;199(11):1368-1376. doi:10.1164/rccm.201803-0589OC
21. Prakash J, Bhattacharya PK, Yadav AK, Kumar A, Tudu LC, Prasad K. ROX index as a good predictor of high flow nasal cannula failure in COVID-19 patients with acute hypoxemic respiratory failure: a systematic review and meta-analysis. *J Crit Care.* 2021;66:102-108. doi:10.1016/j.jcrc.2021.08.012
22. Yildizdas D, Yontem A, Iplik G, Horoz OO, Ekinçi F. Predicting nasal high-flow therapy failure by pediatric respiratory rate-oxygenation index and pediatric respiratory rate-oxygenation index variation in children. *Eur J Pediatr.* 2021;180(4):1099-1106. doi:10.1007/s00431-020-03847-6
23. Kannikeswaran N, Whittaker P, Sethuraman U. Association between respiratory rate oxygenation index and need for positive pressure ventilation in children on high flow nasal cannula for bronchiolitis. *Eur J Pediatr.* 2022;181(11):3977-3983. doi:10.1007/s00431-022-04607-4
24. Milési C, Pierre AF, Deho A, et al. A multicenter randomized controlled trial of a 3-L/kg/min versus 2-L/kg/min high-flow nasal cannula flow rate in young infants with severe viral bronchiolitis (TRAMONTANE 2). *Intensive Care Med.* 2018;44(11):1870-1878. doi:10.1007/s00134-018-5343-1
25. Webb LV, Chahine R, Aban I, Prabhakaran P, Loberger JM. Predicting high-flow nasal cannula therapy outcomes using the ROX-HR index in the pediatric ICU. *Respir Care.* 2022;67(11): 1377-1384. doi:10.4187/respcare.09765
26. Cambonie G, Milési C, Jaber S, et al. Nasal continuous positive airway pressure decreases respiratory muscles overload in young infants with severe acute viral bronchiolitis. *Intensive Care Med.* 2008;34(10):1865-1872. doi:10.1007/s00134-008-1201-x