



**HAL**  
open science

## Perinatal programming of intestinal homeostasis following exposure to low dose of CPF in male rats offspring

Marion Guibourdenche, Hiba El Khayat El Sabbouri, A. Bouzerara, Narimane Djekkoun, Hafida Khorsi-Cauet, Jean Guibourdenche, Véronique Bach, P.M. Anton, Jerome Gay-Queheillard

### ► To cite this version:

Marion Guibourdenche, Hiba El Khayat El Sabbouri, A. Bouzerara, Narimane Djekkoun, Hafida Khorsi-Cauet, et al.. Perinatal programming of intestinal homeostasis following exposure to low dose of CPF in male rats offspring. *NeuroGastro* 2019, Sep 2019, Lisbonne, Portugal. hal-04390550

**HAL Id: hal-04390550**

**<https://hal.science/hal-04390550v1>**

Submitted on 12 Jan 2024

**HAL** is a multi-disciplinary open access archive for the deposit and dissemination of scientific research documents, whether they are published or not. The documents may come from teaching and research institutions in France or abroad, or from public or private research centers.

L'archive ouverte pluridisciplinaire **HAL**, est destinée au dépôt et à la diffusion de documents scientifiques de niveau recherche, publiés ou non, émanant des établissements d'enseignement et de recherche français ou étrangers, des laboratoires publics ou privés.

# Perinatal programming of intestinal homeostasis following exposure to low dose of chlorpyrifos in male rats offspring

Marion Guibourdenche<sup>1,2</sup>, Hiba El Khayat El Sabbouri<sup>1</sup>, Amina Bouzerara<sup>3</sup>, Narimane Djekkoun<sup>1</sup>, Hafida Khorsi-Cauet<sup>1</sup>, Jean Guibourdenche<sup>3</sup>, Véronique Bach<sup>1</sup>, Pauline M Anton<sup>2</sup>, Jérôme Gay-Quéheillard<sup>1</sup>

1. PériTox, Périnatalité & Risques Toxiques, UMR-I 01, UPJV, Amiens, France  
2. Equipe PETALES – EA 7519 - Unité Transformations & Agro-Ressources, UniLaSalle Beauvais, France  
3. Biologie hormonale, CHU Cochin, Université Paris Descartes, AP-HP, Paris, France.

**Objective:** This work was aimed at studying the effects of a peri-gestational exposure of dams to a low dose of pesticide (chlorpyrifos) with a prebiotic supplementation (inulin) on the anatomo-functional development of the digestive system and associated metabolic consequences of the growing male offspring.

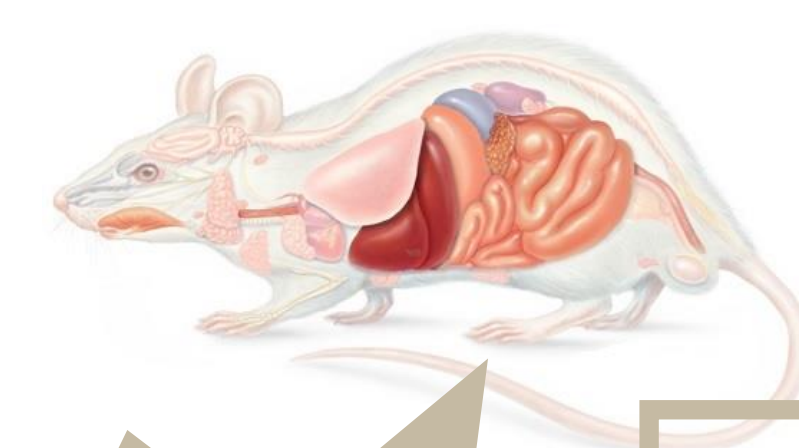
## INTRODUCTION

Perinatal period is characterized by a succession of developmental phases with high sensitivity to environmental factors. Among the risk factors, pesticide exposure is now recognized to reprogram children's metabolism and promote the occurrence of obesity or type 2 diabetes. This work was dedicated to the peri-gestational exposure of dams to a low dose of pesticide (chlorpyrifos, CPF) and the exploration of the prebiotic supplementation benefits

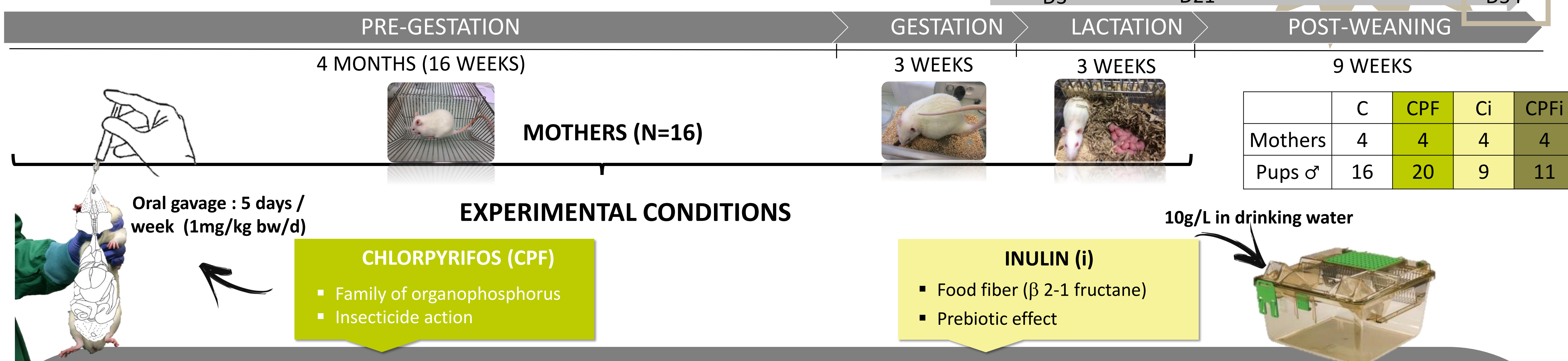
## HYPOTHESIS



1. Chlorpyrifos : cause of  $\nearrow$  the occurrence of obesity, associated with metabolic disorders and disturbances of digestive function in male offsprings ?
2. Prebiotic: limitation of observed disorders induced by the pesticide ?

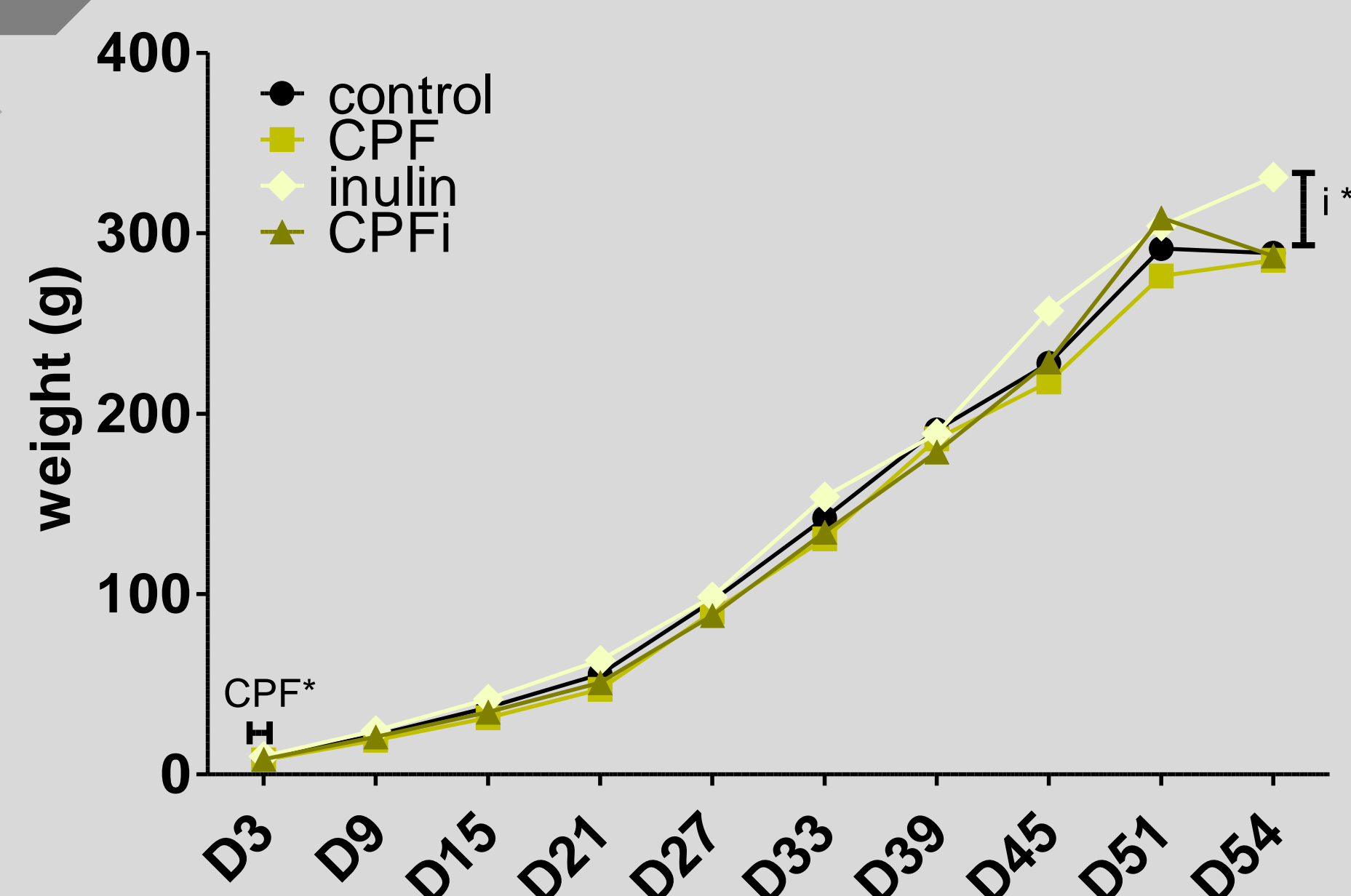


## METHODS



## RESULTS

### WEIGHT

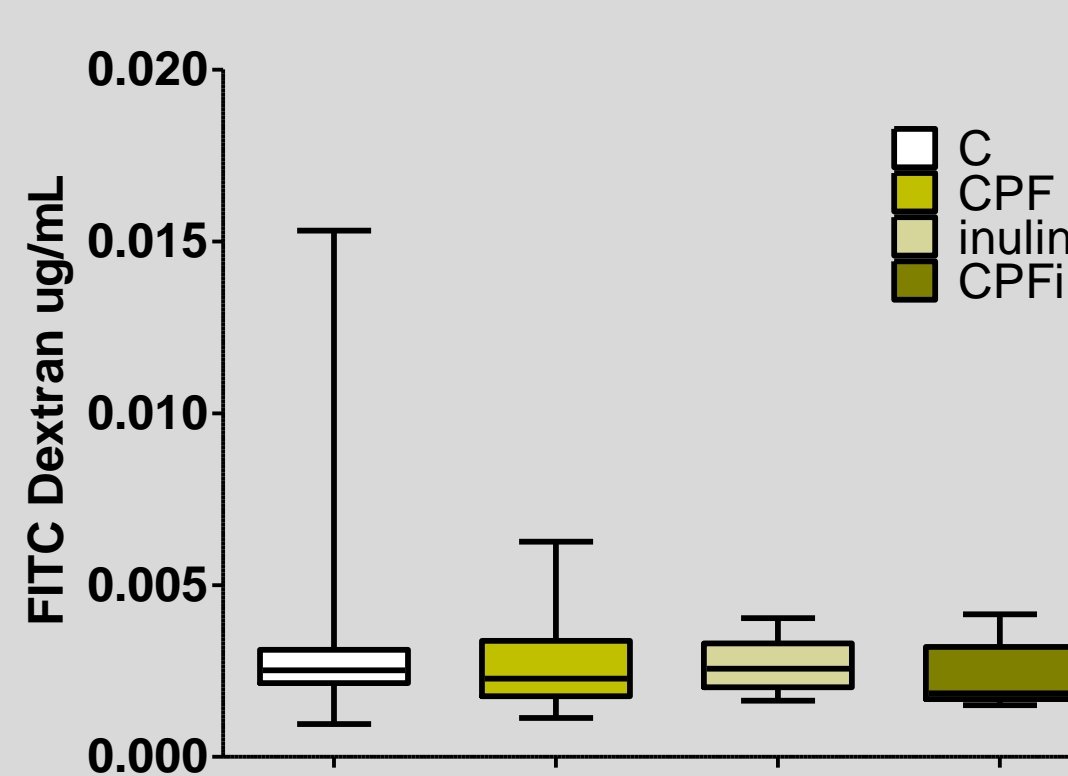


### METABOLIC ASSAYS

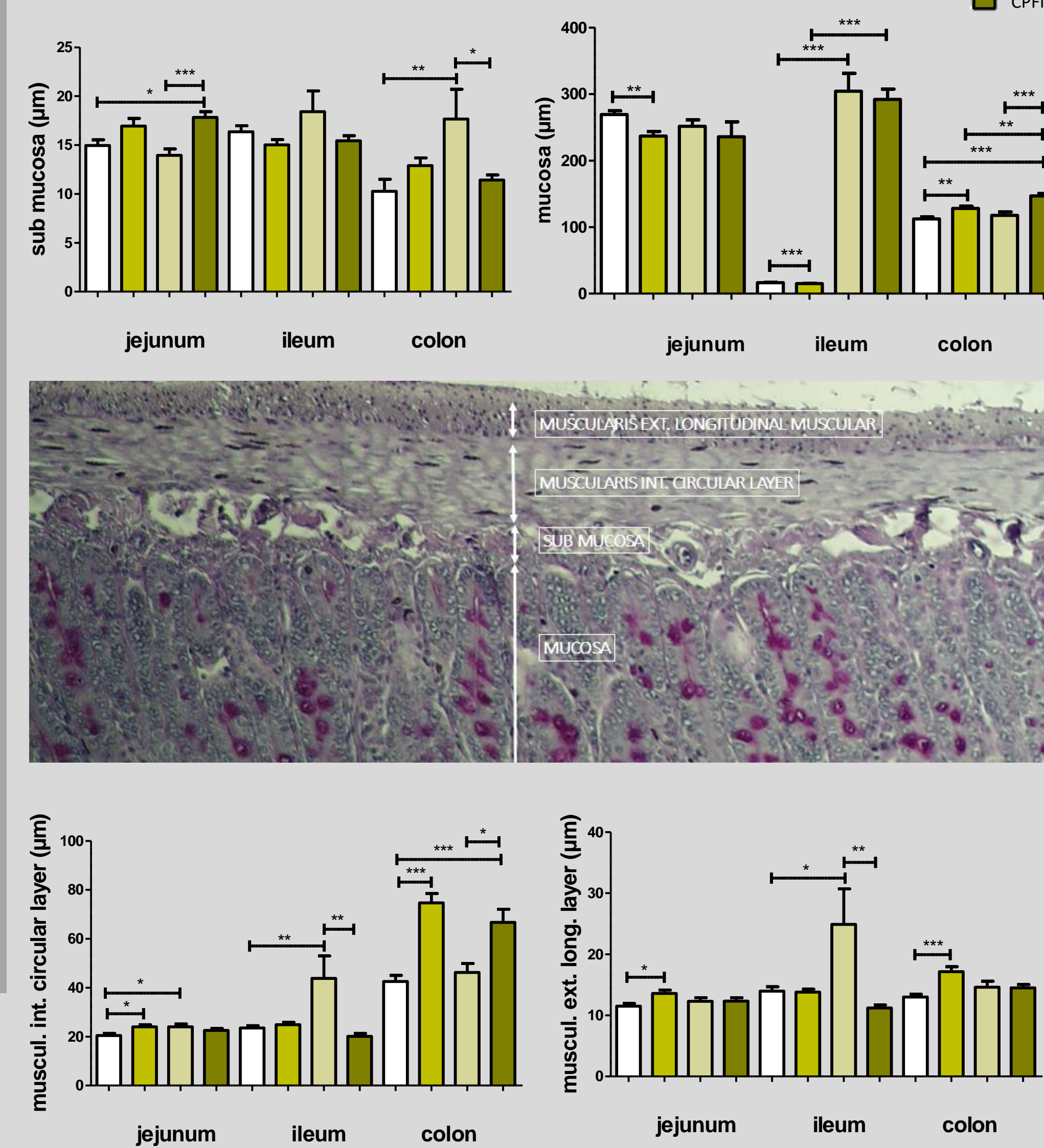
	CPF	Ci	CPFi
Total cholesterol (mmol/L)	$\emptyset$	$\emptyset$	$\emptyset$
TG (mmol/L)	CPF ind $\nearrow$	$\nearrow^*$	$\emptyset$
HDL (mmol/L)	$\emptyset$	$\emptyset$	$\emptyset$
LDL (mmol/L)	$\emptyset$	$\searrow^{**}$	$\searrow^*$
Glucose (mmol/L)	$\emptyset$	$\emptyset$	$\emptyset$
Insulin ( $\mu$ U/L)	$\nearrow$ ind	on CPF rats $\searrow^{***}$	$\searrow^*$
IGF1/weight	$\searrow^{**}$	$\searrow^{**}$	$\emptyset$
Leptin	$\searrow$ ind	$\emptyset$	$\emptyset$

COBAS Automaton (Roche) and Rat ELISA (Fisher Scientific Thermo Kit)

### INTESTINAL PERMEABILITY



### INTESTINAL LAYERS THICKNESSES



### GENE EXPRESSION

	JEJUNUM	ILEUM	COLON
MUC2	CPF $\searrow^*$	$\emptyset$	CPF $\searrow^{**}$ with and without inulin
MUC3	CPF $\searrow^{***}$	CPF $\nearrow^{**}$	CPF $\searrow^{***}$
TLR4	CPF $\nearrow^{**}$	Inulin on CPF rats $\searrow$ ind	CPF $\searrow^{**}$ with and without inulin

### EPITHELIAL TIGHT JUNCTIONS PROTEINS

	JEJUNUM	ILEUM	COLON
CLAUDINE 4	CPF $\searrow^{***}$ Inulin $\searrow^{***}$	CPF $\nearrow^{***}$	$\emptyset$
OCCLDINE	$\emptyset$	$\emptyset$	CPF $\searrow^{***}$ Inulin $\searrow^{***}$ Inulin $\nearrow$ ind on CPF rats

RT PCR : Expression of genes coding for mucin 2 and 3 and TLR4 receptor proteins and proteins involved in tight junctions constitution (standardization gene: GAPDH)

Kruskal Wallis with Dunn's post test or ANOVA with Bonferroni's post test ; GraphPad Prism version 5.00 - \*p<0,05; \*\* p<0,01; \*\*\* p<0,001

## CONCLUSIONS

Pups from dams in contact with a pesticide during the peri-gestational period presented:

- Developmental alterations : a lower birth weight and a  $\searrow$  in plasma levels of factors involved in growth and metabolism (IGF1 and leptin).
- Modification of the intestinal epithelial permeability : underexpression of tight junctions proteins in some intestinal segments
- Disturbance of intestinal barrier function : a reduced expression of MUC2 and MUC3 genes
- Impacts on organs development and growth (digestive system) :  $\nearrow$  of circular and longitudinal muscle layers thicknesses (jejunum and colon),  $\nearrow$  of submucosa thickness (jejunum and colon) and  $\searrow$  of mucosa thickness (jejunum and ileum).
- We suggest that the pesticide slows down fetal and postnatal development (especially the digestive system) and may cause digestive function alterations such as an increase of intestinal permeability, and probably some impacts on intestinal motility.

## THANKS

Animal team, PlatAnN animal facility platform, and Aurélie Corona, laboratory technician PériTox UMR-I-01, Amiens, France

Contact : Jerome.gay@u-picardie.fr